



INTEQ

Company : Karoon Gas Pty Ltd

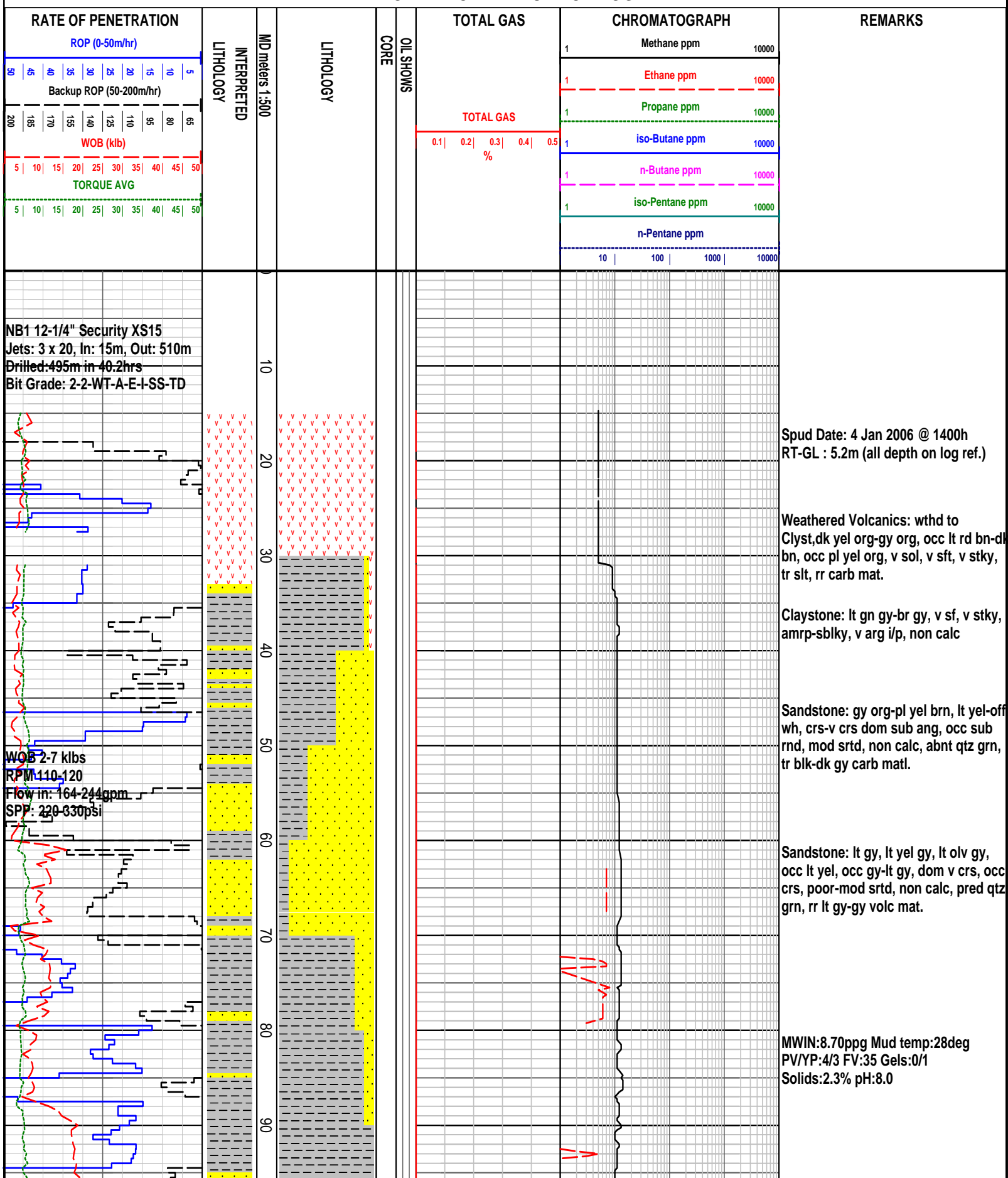
Well : Megascolides 2

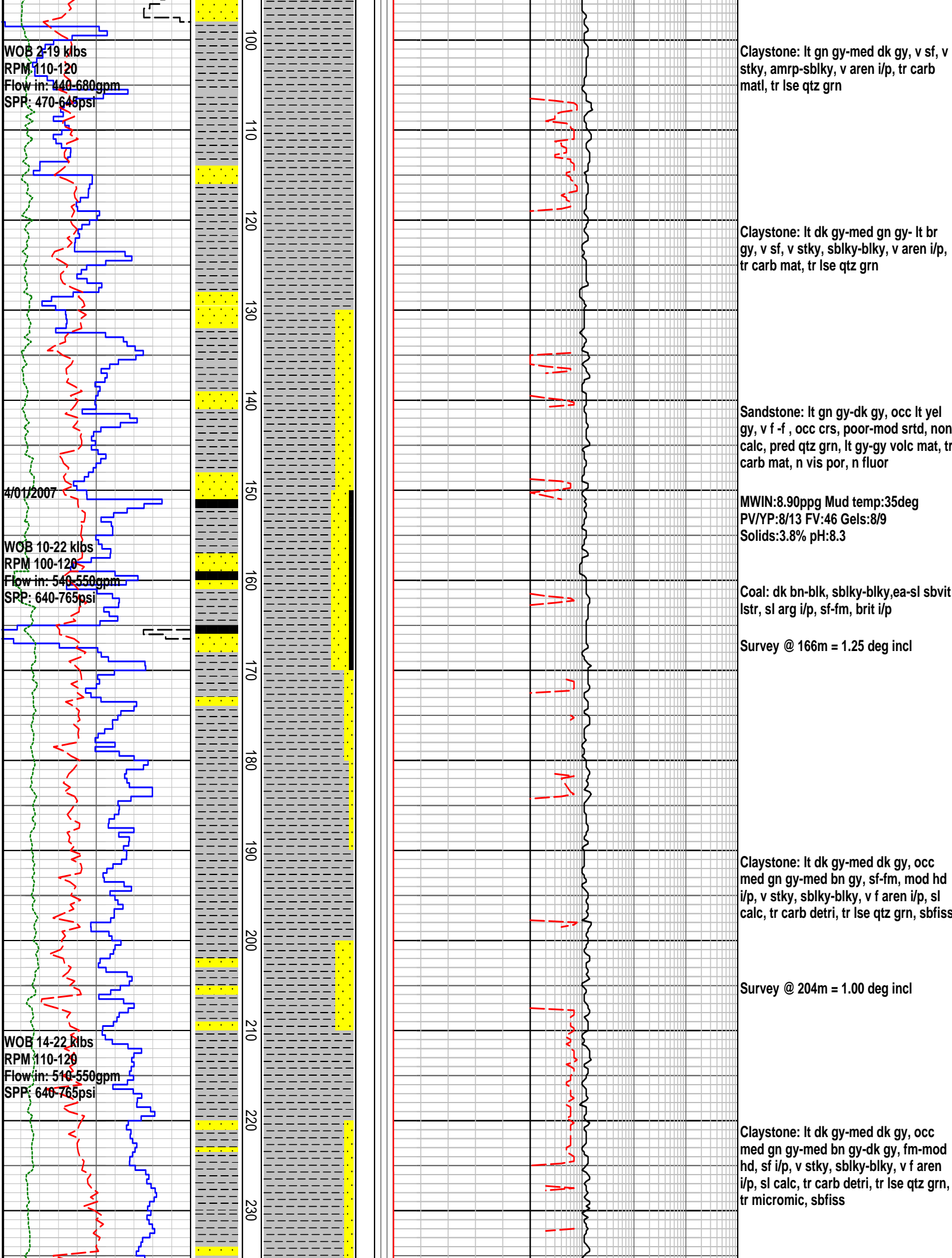
Interval : 0.00 - 518.51 meters

Created : 09/Jan/2007 9:21:38 AM



FORMATION EVALUATION LOG





WOB 10-27 klbs
RPM 100-135
Flow in: 620-665gpm
SPP: 765-1215psi

WOB 9-24 klbs
RPM 98-141
Flow in: 627-673gpm
SPP: 1150-1220psi

WOB 9-27 klbs
RPM 98
Flow in: 656-669gpm
SPP: 1150-1200psi

5/01/2007

MWIN:8.95ppg Mud temp:46deg
PV/YP:8/12 FV:40 Gels:13/14
Solids:4.1% pH:8.0

Sandstone:transp-transl, off wh-yel
wh-lt gn gy-dk gy, v f-f, ang-sbrnd, i/p
rnd, v f wh-gy arg matrix, poor-mod
srted, wk calc cmt, pred qtz grn, fm-hd,
tr carb mat, n vis por,

Claystone: lt gy-gy-dk gy, gen fm, occ
mod hd, stky, sbblky-sbang, v f aren
i/p, sl calc, com-abnt carb matl, tr v f
sand.

Sandstone: transp-transl, opq, off
wh-lt yel wh-lt gy-dk gy, pred v f-f,
sbrnd -rnd, occ sbang, v f wh-gy arg
matrix, mod-w srted, sl calc cmt, pred
qtz grn, fm-hd, abnt carb matl, n vis
por.

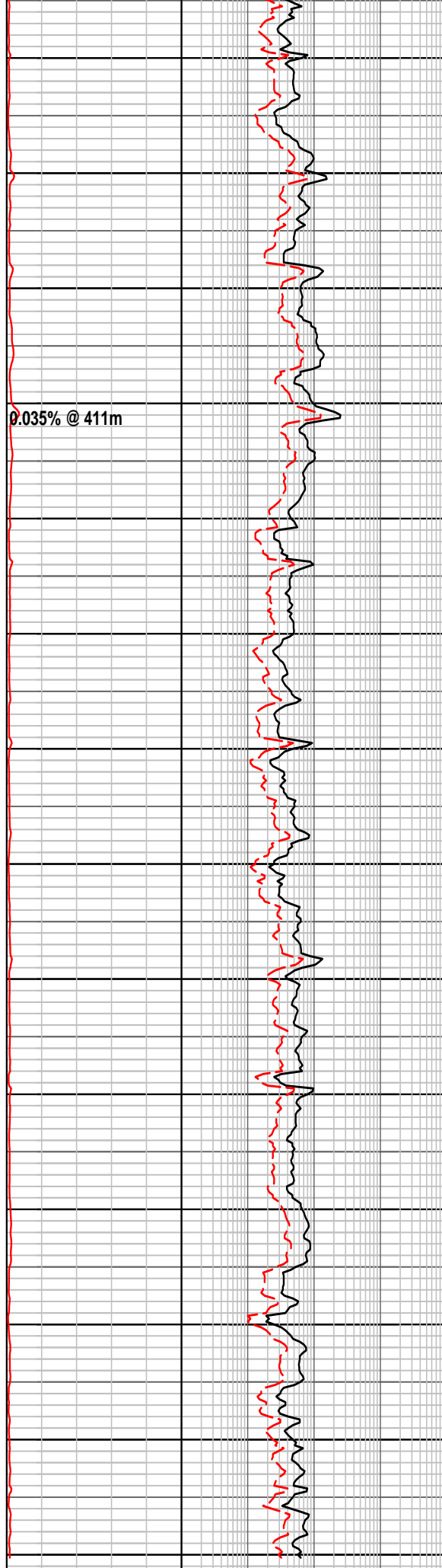
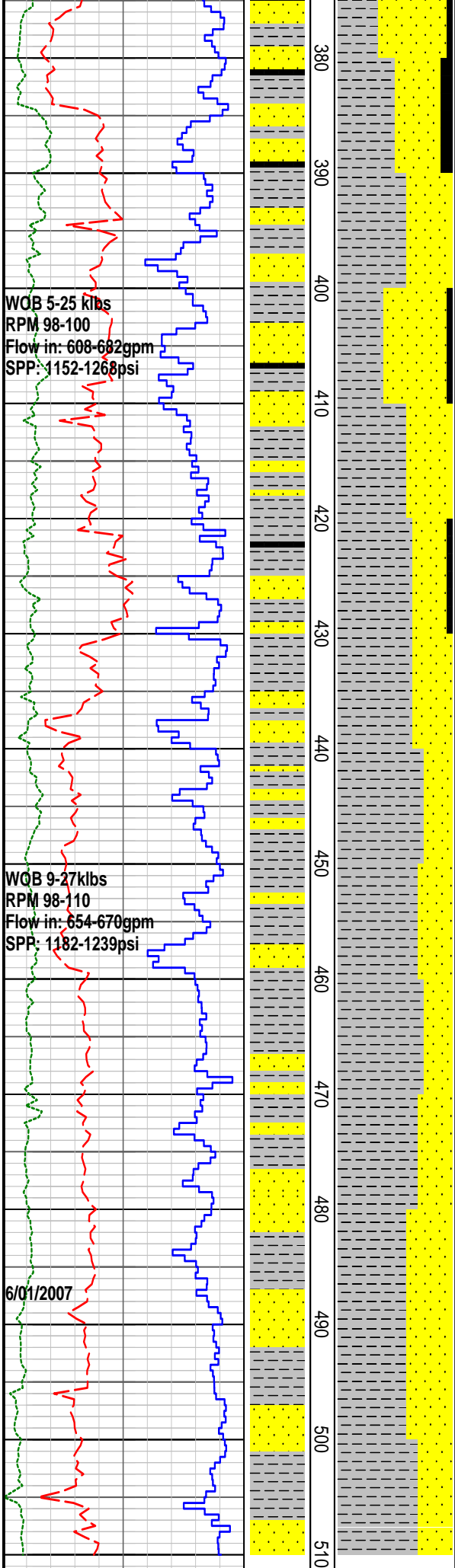
Survey @ 316m = 1.50 deg incl

Coal: blk, occ v dk gy, sbang-sblky,
occ plty, sbvit lstr, arg i/p, sf-fm, brit
i/p

Claystone: lt gy-gy-dk gy, occ olv
gy-dk olv gy, fm-mod hd, sl stky,
sbblky-sbang, occ sbrnd, aren i/p, sl
calc, com-abnt carb matl, tr v f sand.

MWIN:8.95ppg Mud temp:51deg
PV/YP:7/12 FV:40 Gels:16/19
Solids:4.1% pH:8.0

Sandstone: transp-transl, opq, off
wh-lt yel wh-lt gy-dk gy, pred v f-f,
occ i/p, sbrnd -rnd, occ sbang, v f



crse i/p, sbrnd -rnd, occ sbang, v
wh-gy arg matrix, poor-mod, sl calc
cmt, pred qtz grn, fm-hd, abnt carb
matl, n vis por, no fluor

Claystone: lt gy-dk gy, olv gy-lt olv gy
gy-grn gy, gen mod hd, occ v fm, sl
stky, sbbiky-sbang, occ sbrnd, aren,
sl calc, com-abnt carb matl, tr v f
sand, occ grdng to sltst.

MWIN:9.00ppg Mud temp:52deg
PV/YP:5/11 FV:40 Gels:16/20
Solids:4.4% pH:8.0

Survey @ 419m = 0.75 deg incl

Sandstone: transp-transl, opq, off
wh-lt gy, dk gy, pred v f-f, occ med,
sbrnd-rnd, occ sbang, v f wh-gy arg
matrix, gen mod srted, w srted i/p, occ s
calc, mod hd, occ hd, occ fri,
pred qtz grn, com abnt carb matl, no
vis por, grdng to sltst, no flour.

Claystone: lt gy-gy, lt olv gy-olv gy,
gen mod hd, occ v fm, non stky,
sbbiky-sbang, occ sbrnd, aren, v sl
calc, com carb matl, com v f sand, occ
grdng to sltst.

MWIN:9.10ppg Mud temp:54deg
PV/YP:5/13 FV:37 Gels:20/22
Solids:5.1% pH:8.0

Sandstone: transp-transl, opq, off
wh-lt gy, dk gy, pred v f-f, occ med,
sbrnd-rnd, occ sbang, v f wh-gy arg
matrix, gen mod srted, w srted i/p, occ s
calc, mod hd, occ hd, occ fri,
pred qtz grn, com abnt carb matl, no
vis por, grdng to sltst, no flour.

Survey @ 503m = 1.00 deg incl

[illegible]