



Company: Esso Australia Ltd.

Well: A-23  
Field: Flounder  
Rig : Crane / Prod#4

Country: Australia

Cement  
Dump Bailer

Crane / Prod#4

Flounder

Gippsland

A-23

Esso Australia Ltd.

LOCATION

Gippsland

Basin

Bass Strait

Elev.: K.B. 33.2 m

G.L. -93 m

D.F. 33.2 m

Permanent Datum: M.S.L.

Log Measured From: K.B.

Elev.: 0 m

33.2 m above Perm. Datum

Drilling Measured From: K.B.

State: Victoria

Max. Well Deviation 49 deg

Longitude 148 26'22.833" E

Latitude 038 18'39.173" S

Logging Date	1-Sep-2006		
Run Number	One		
Depth Driller	3168 m		
Schlumberger Depth	3168 m		
Bottom Log Interval	3168 m		
Top Log Interval	3105 m		
Casing Fluid Type	Production Fluids		
Salinity			
Density			
Fluid Level			
BIT/CASING/TUBING STRING			
Bit Size	9.000 in		
From			
To			
Casing/Tubing Size	7.625 in		
Weight	29.7 lbm/ft		
Grade	L-80		
From	19.68 m		
To	3501 m		
Maximum Recorded Temperatures	231 degF		
Logger On Bottom	1-Sep-2006		13:20
Unit Number	Location		
Recorded By	LEE001	Prod#4 / Vea	
Witnessed By	G Wright / S Gilbert.		
	B White.		

	Oil Density	Run 1
	Water Salinity	
	Gas Gravity	
	Bo	
	Bw	
	1/Bg	
	Bubble Point Pressure	
	Bubble Point Temperature	
	Solution GOR	
	Maximum Deviation	49 deg
	CEMENTING DATA	
	Primary/Squeeze	Primary
	Casing String No	
	Lead Cement Type	
	Volume	
	Density	
	Water Loss	
	Additives	
	Tail Cement Type	
	Volume	
	Density	
	Water Loss	
	Additives	
	Expected Cement Top	
	Logging Date	
	Run Number	
	Depth Driller	
	Schlumberger Depth	
	Bottom Log Interval	
	Top Log Interval	
	Casing Fluid Type	
	Salinity	
	Density	
	Fluid Level	
	BIT/CASING/TUBING STRING	
	Bit Size	
	From	
	To	
	Casing/Tubing Size	
	Weight	
	Grade	
	From	
	To	
	Maximum Recorded Temperatures	
	Logger On Bottom	
	Unit Number	
	Recorded By	
	Witnessed By	

## DEPTH SUMMARY LISTING

Date Created: 7-AUG-2006 12:52:54

### Depth System Equipment

Depth Measuring Device	Tension Device	Logging Cable
Type: IDW-H Serial Number: 797 Calibration Date: 1-May-2006 Calibrator Serial Number: 1009 Calibration Cable Type: 2-32ZT Wheel Correction 1: -3 Wheel Correction 2: -3	Type: CMTD-C Serial Number: 1037 Calibration Date: 7-Aug-2006 Calibrator Serial Number: 1174 Calibration Gain: 1.10 Calibration Offset: 325.00	Type: 2-32ZT Serial Number: 26087 Length: 6900.06 M Conveyance Method: Wireline Rig Type: Offshore_Mobile

### Depth Control Parameters

Log Sequence:	Subsequent Trip To the Well
Reference Log Name:	Solar Log
Reference Log Run Number:	1
Reference Log Date:	14-Mar-2005

### Depth Control Remarks

1. Correlated to Solar Log provided by client.
2. IDW used as primary depth control.
3. Z-Chart used as secondary depth control.
4.
5.
6.

#### DISCLAIMER


THE USE OF AND RELIANCE UPON THIS RECORDED-DATA BY THE HEREIN NAMED COMPANY (AND ANY OF ITS AFFILIATES, PARTNERS, REPRESENTATIVES, AGENTS, CONSULTANTS AND EMPLOYEES) IS SUBJECT TO THE TERMS AND CONDITIONS AGREED UPON BETWEEN SCHLUMBERGER AND THE COMPANY, INCLUDING: (a) RESTRICTIONS ON USE OF THE RECORDED-DATA; (b) DISCLAIMERS AND WAIVERS OF WARRANTIES AND REPRESENTATIONS REGARDING COMPANY'S USE OF AND RELIANCE UPON THE RECORDED-DATA; AND (c) CUSTOMER'S FULL AND SOLE RESPONSIBILITY FOR ANY INFERENCE DRAWN OR DECISION MADE IN CONNECTION WITH THE USE OF THIS RECORDED-DATA.

OTHER SERVICES1
OS1: None
OS2:
OS3:
OS4:
OS5:
REMARKS: RUN NUMBER 1
Log correlated to Flounder A-23a Well Schematic
Maximum well deviation = 49 degrees at 3169m MDKB.
Objectives: Put 1m of cement on top of an existing plug at 3169m MDKB .
Cement Dumped at 3168.5 MDKB .

Crew : John Light & Jake Annear.


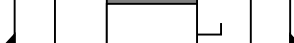


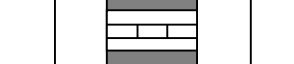
RUN 1				
SERVICE ORDER #:		AUSL06336249		
PROGRAM VERSION:		14C0-302		
FLUID LEVEL:		0 m		
LOGGED INTERVAL	START	STOP	LOGGED INTERVAL	START

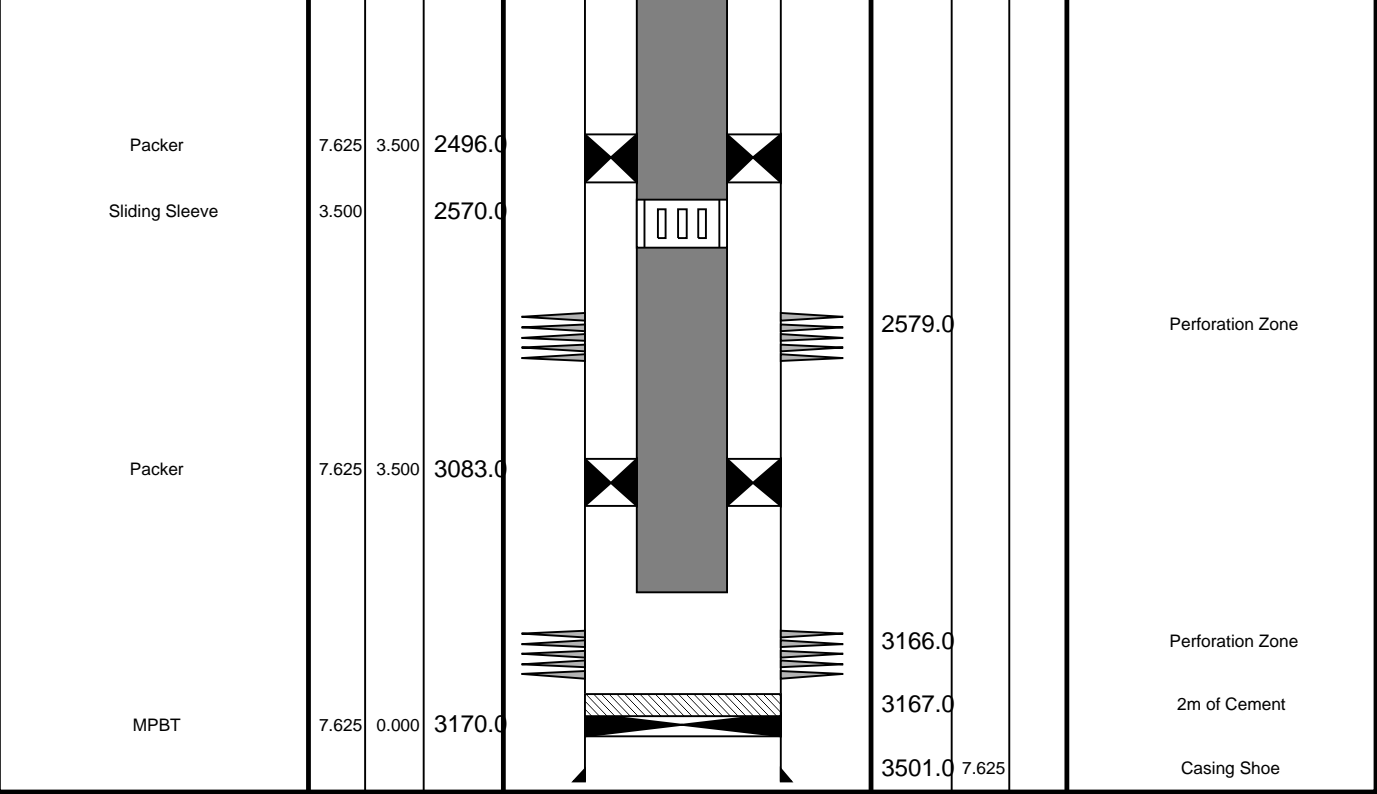
EQUIPMENT DESCRIPTION

RUN 1		RUN 2	
SURFACE EQUIPMENT			
WITM (SHM)			
DOWNHOLE EQUIPMENT			
SWHA/A 726		13.64	
CCL-L 4195	Tension CCL	TOOL ZERO	13.16
GUN-Dump Bailer			12.70

TOOL BOTTOM

MAXIMUM STRING DIAMETER 2.13 IN  
MEASUREMENTS RELATIVE TO TOOL ZERO  
ALL LENGTHS IN METERS

Production String	(in)		(m)	Well Schematic	(m)	(in)		Casing String
	OD	ID	MD		MD	OD	ID	
Tubing Tubing Hanger	3.500 7.625	3.500	19.0 19.0		19.7 19.7 19.7	10.750 7.625 10.750	7.625	Casing String Casing String Liner Hanger
Gas Lift Mandrel	3.500		676.0		666.6	10.750		Casing Shoe
Gas Lift Mandrel	3.500		1214.0					
Gas Lift Mandrel	3.500		1502.0					
Nipple	3.500		1517.0					



Job Events Summary

MAXIS Field Log

Schlumberger Job Event Summary

Time	Elapsed Time	Depth (M)	File
Log Pass (up)	1-Sep-2006 13:14	000:03	3110.8 – 3073.1 PERFO_014LUP
Log Pass (up)	1-Sep-2006 13:18	000:10	3158.5 – 3096.8 PERFO_015LUP



Dump Cement

MAXIS Field Log

## Output DLIS Files

DEFAULT PERFO\_015LUP FN:14 PRODUCER 01-Sep-2006 13:18 3158.5 M 3096.8 M

## OP System Version: 14C0-302

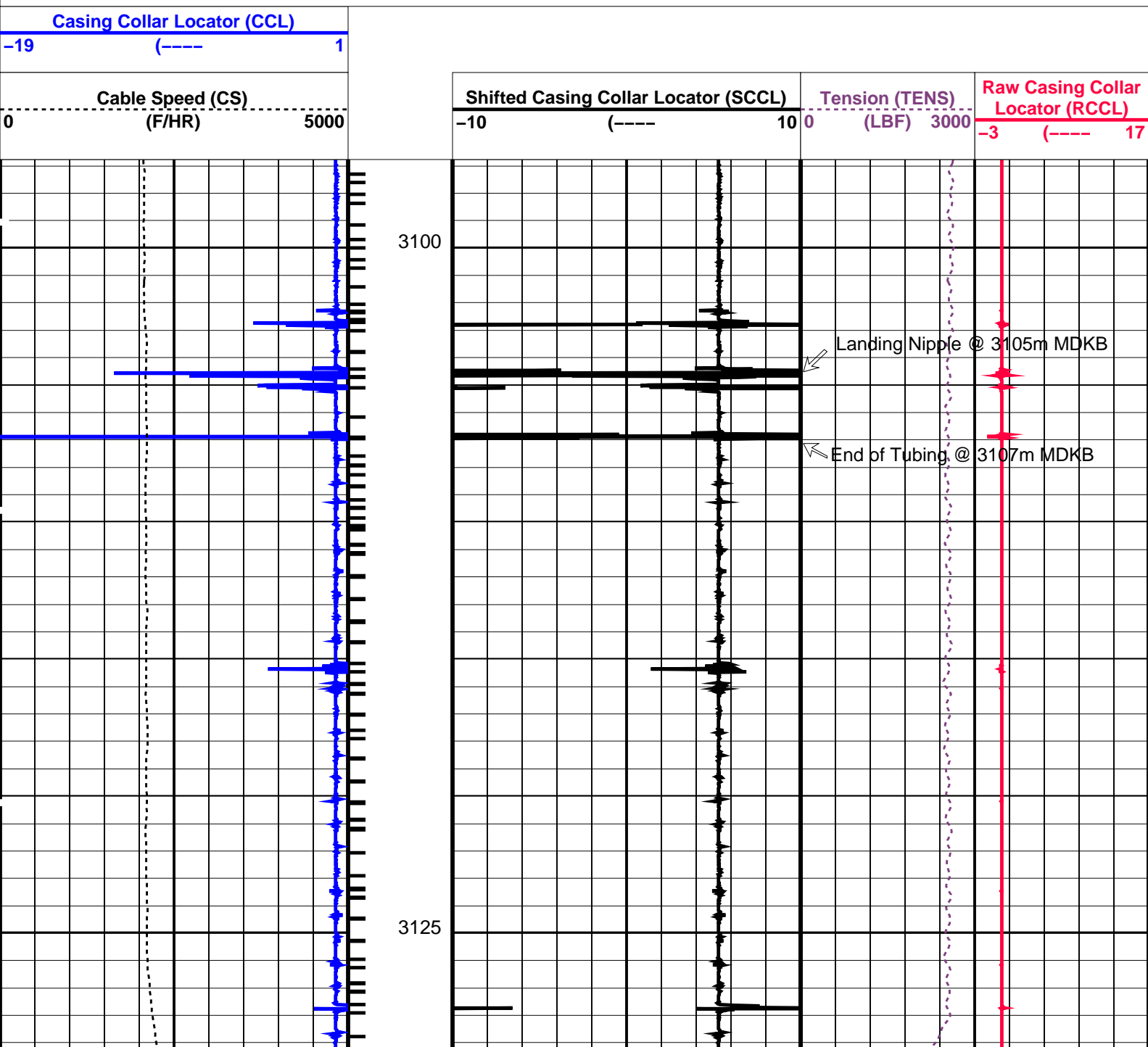
MCM

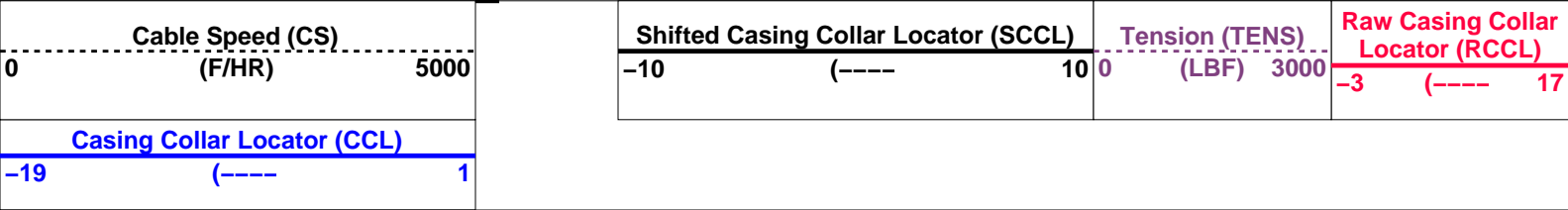
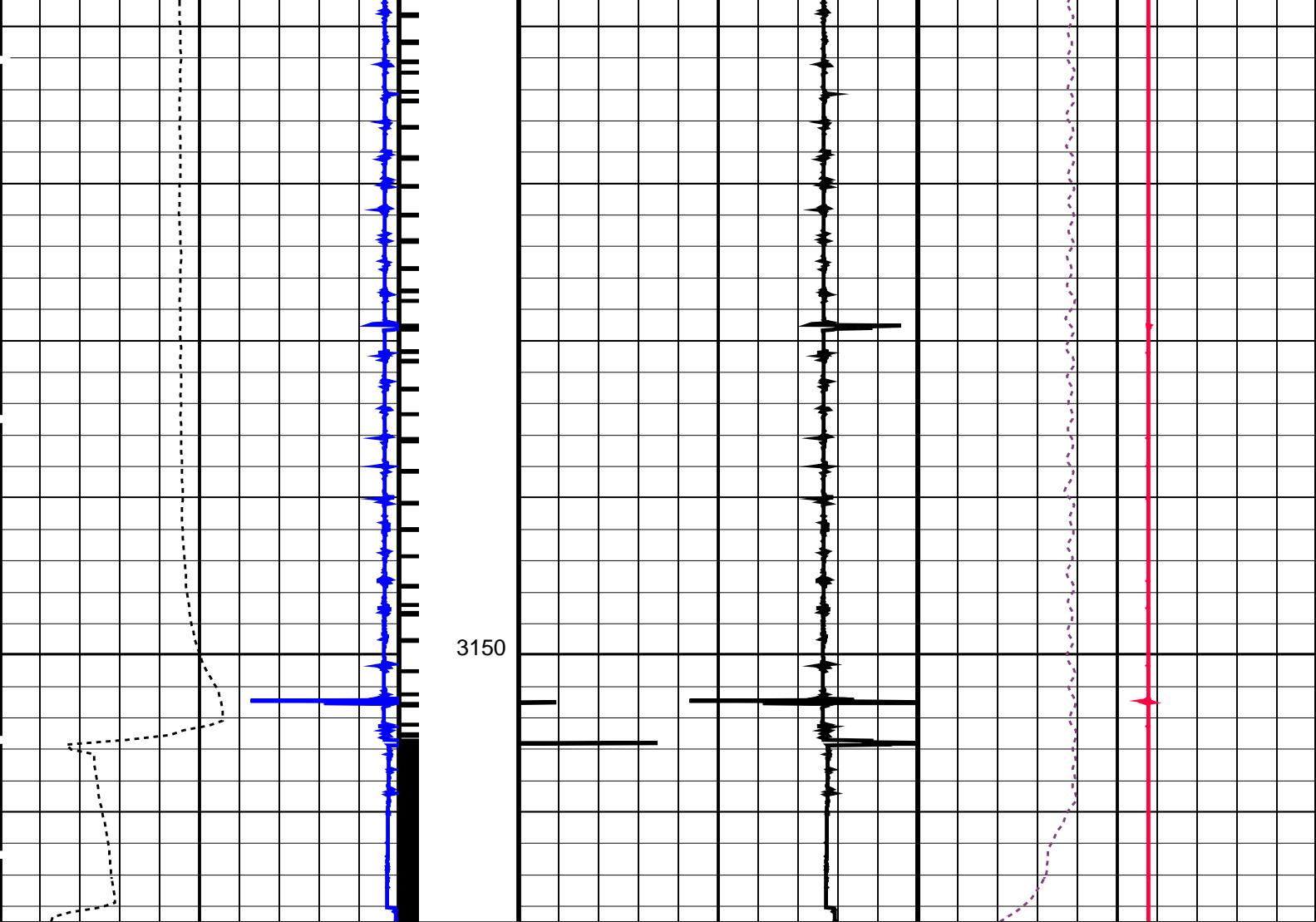
SHM\_GUN SRC-3220-WPP-AAP5 CCL-L 14C0-302

## PIP SUMMARY

Casing Collars

Time Mark Every 60 S





**PIP SUMMARY**

└─ Casing Collars

Time Mark Every 60 S

Parameters		
DLIS Name	Description	Value
CCL-L	Casing Collar Locator	
CCLD	CCL reset delay	12 IN
CCLT	CCL Detection Level	0.3 V

Format: PERFO	Vertical Scale: 1:200	Graphics File Created: 01-Sep-2006 13:18
---------------	-----------------------	--

OP System Version: 14C0-302			
MCM			
SHM_GUN	SRC-3220-WPP-AAP	CCL-L	14C0-302

Output DLIS Files			
DEFAULT	PERFO_015LUP	FN:14	PRODUCER 01-Sep-2006 13:18



Output DLIS Files

DEFAULT      PERFO\_014LUP      FN:13    PRODUCER    01-Sep-2006 13:14    3110.8 M      3073.1 M

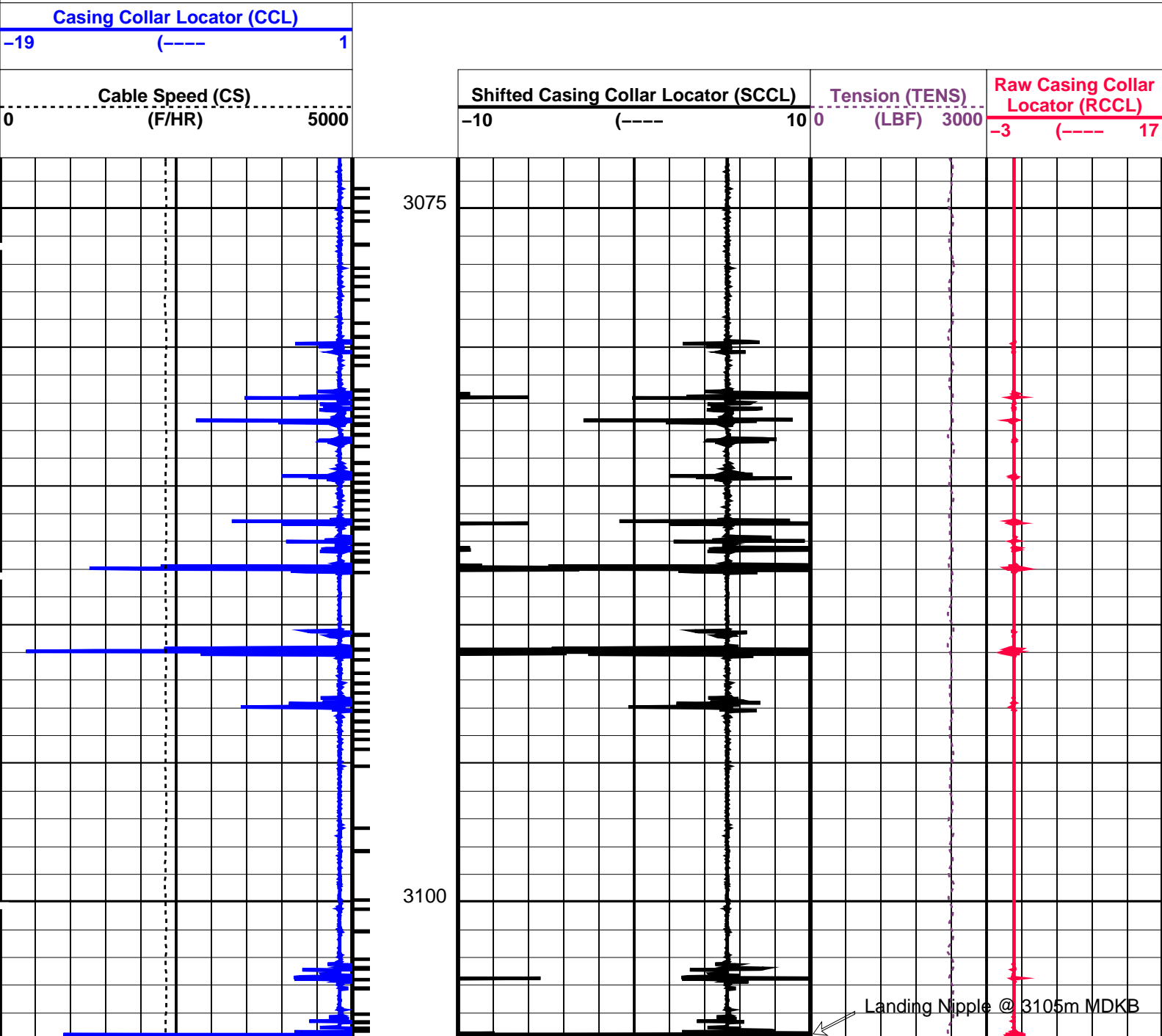
OP System Version: 14C0-302  
MCM

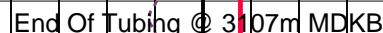
SHM\_GUN      SRC-3220-WPP-AAP\$      CCL-L      14C0-302

PIP SUMMARY

└─ Casing Collars

Time Mark Every 60 S





0 (F/HR) 5000

-10 (----- 10

0 (LBF) 3000

Localities (KCCCL)		
2	1	15

**-19** (----- **1**

## └─ Casing Collars

**Time Mark Every 60 S**

	<b>CCL-L: Casing Collar Locator</b>			
<b>CCLD</b>	CCL reset delay	12	IN	
<b>CCLT</b>	CCL Detection Level	0.3	V	

Format: PERFO      Vertical Scale: 1:200      Graphics File Created: 01-Sep-2006 13:14

**MCM**

SHM GUN	SRC-3220-WPP-AAP5	CCL-L	14C0-302
---------	-------------------	-------	----------

**DEFAULT      PERFO\_014LUP      FN:13      PRODUCER      01-Sep-2006 13:14**

# Schlumberger

Well: **A-23**  
Field: **Flounder**  
Rig : **Crane / Prod#4**  
Country: **Australia**

## Cement Dump Bailer