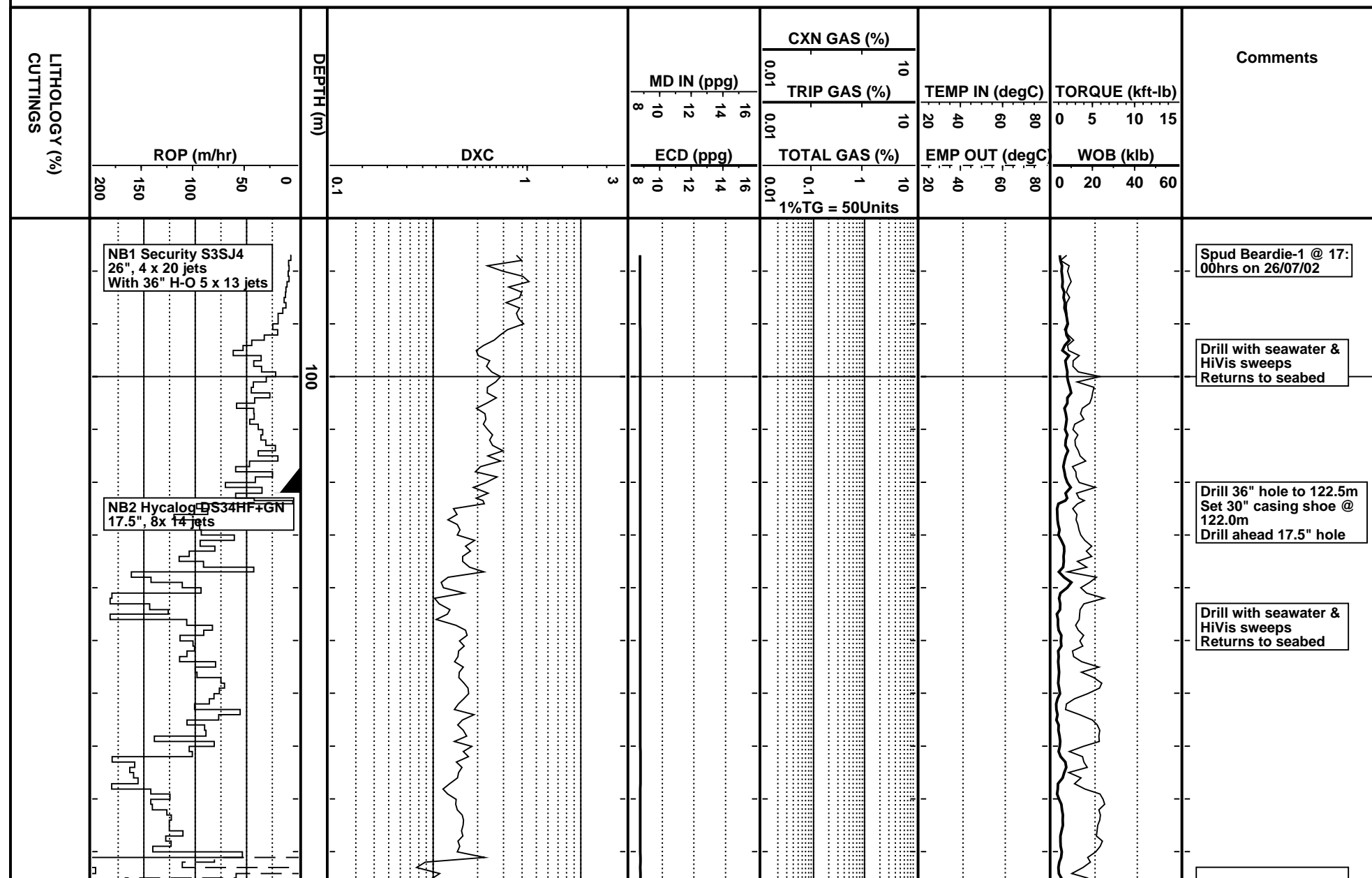




Beardie-1

SCALE: 1 to 1000.0

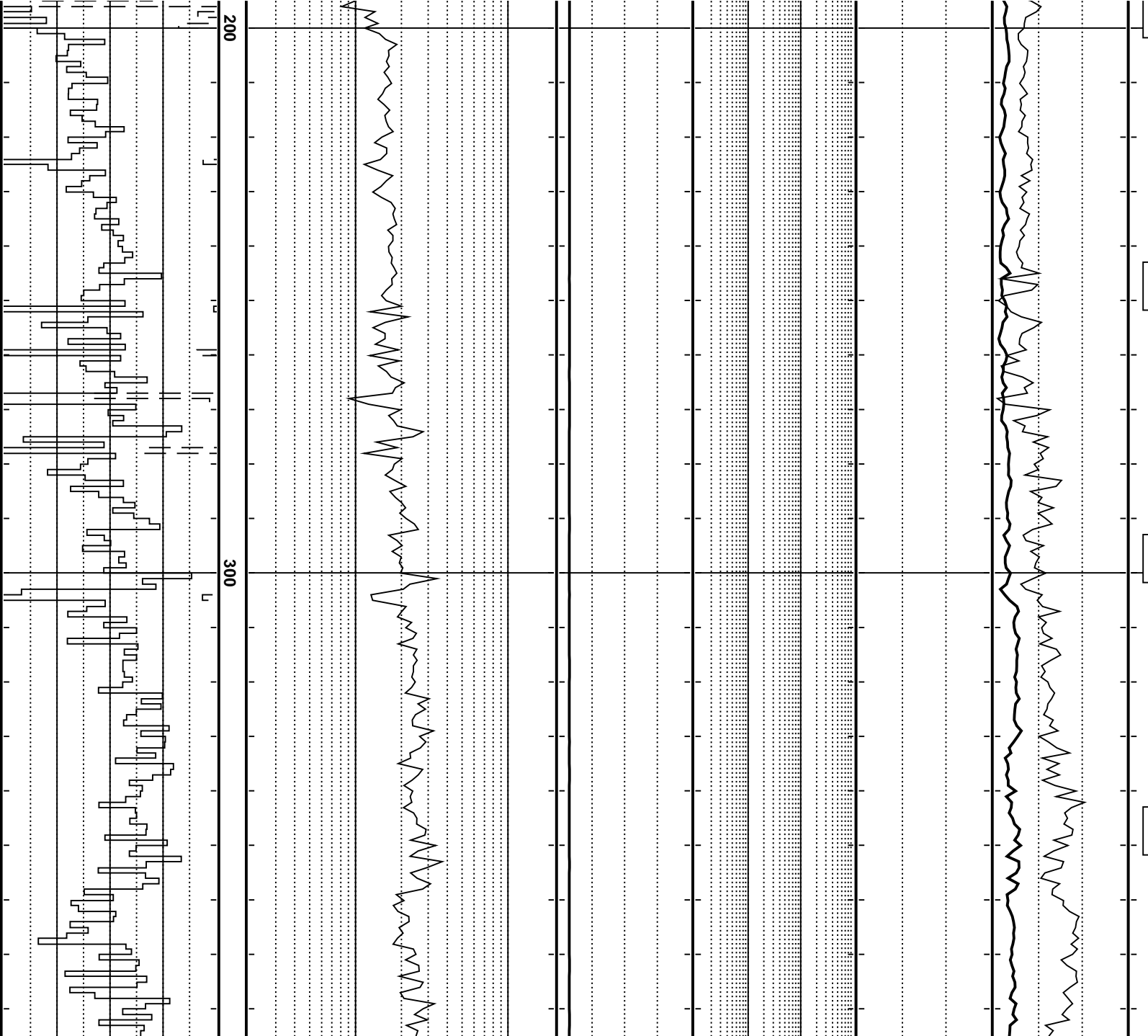


Drill with seawater &
HiVis sweeps
Returns to seabed

Drill with seawater &
HiVis sweeps
Returns to seabed

Drill with seawater &
HiVis sweeps
Returns to seabed

Drill with seawater &
HiVis sweeps
Returns to seabed

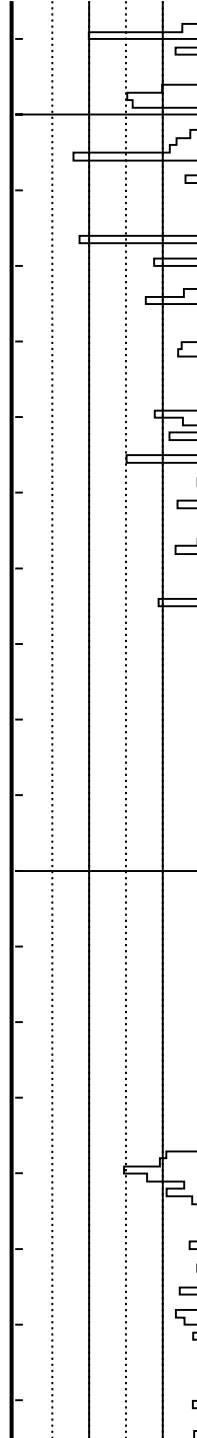
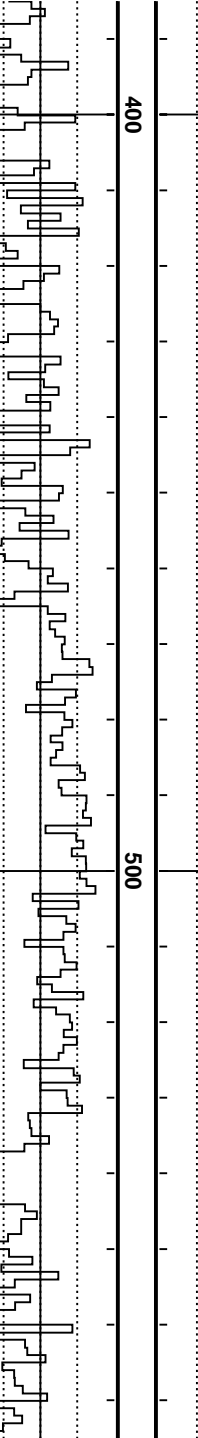
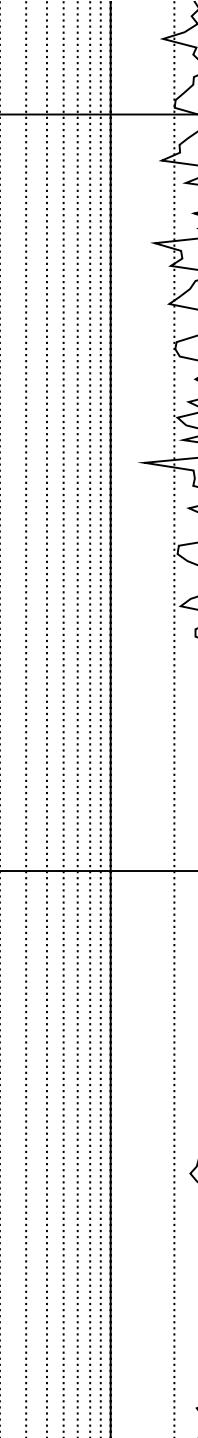
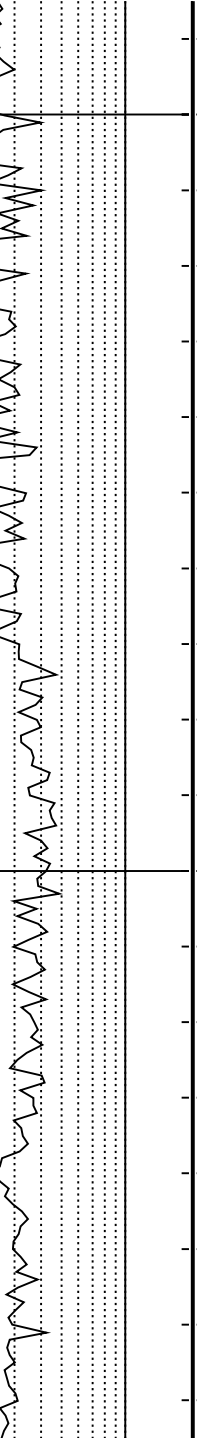
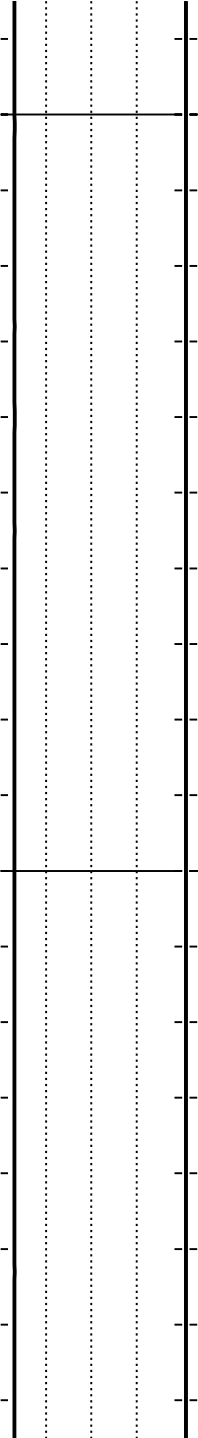
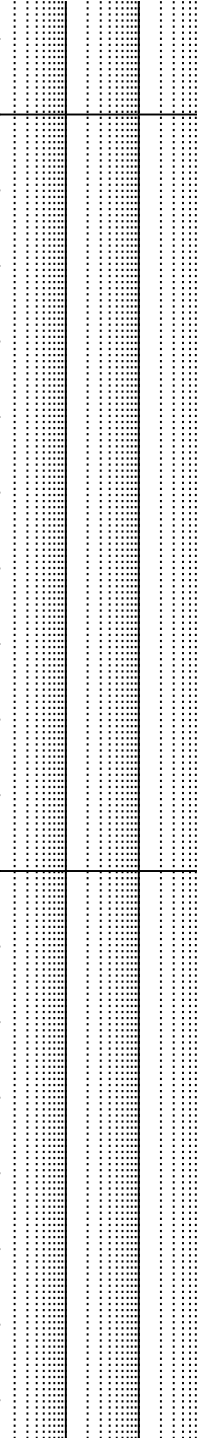
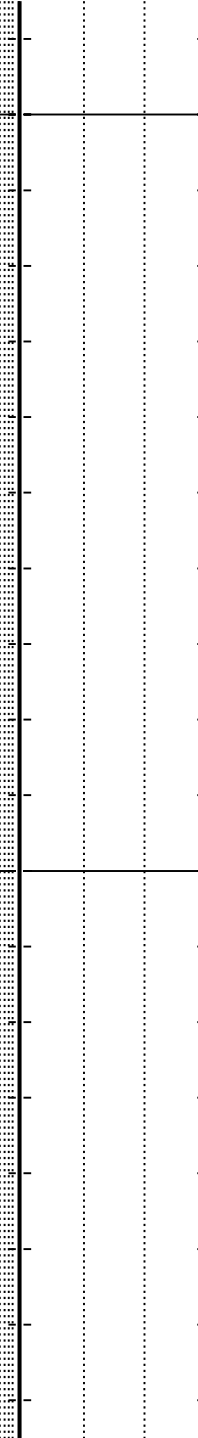
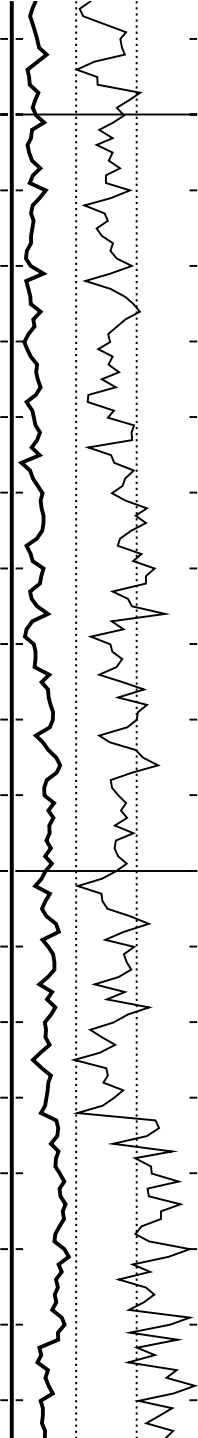


Drill with seawater &
HiVis sweeps
Returns to seabed

Drill with seawater &
HiVis sweeps
Returns to seabed

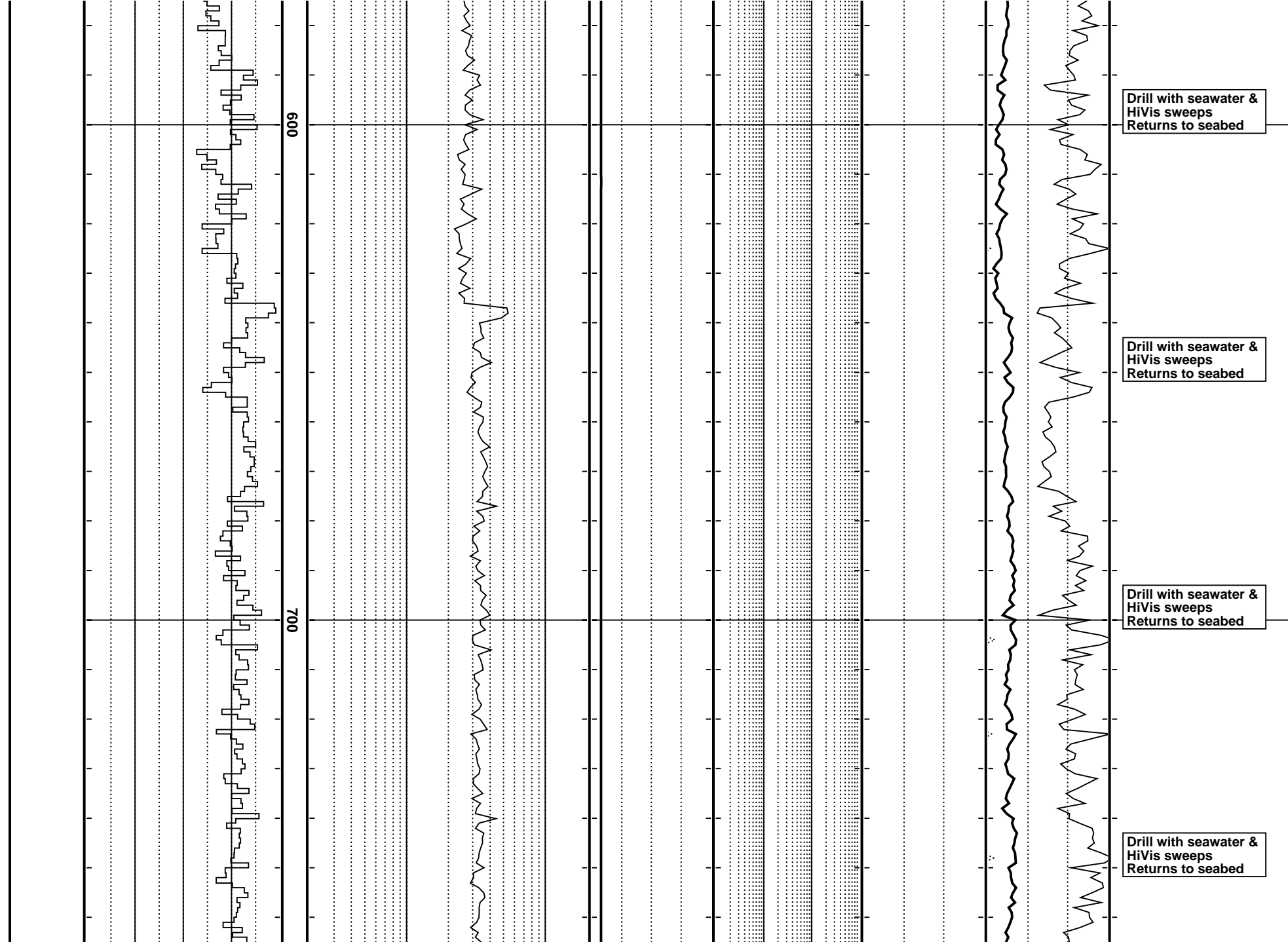
Drill with seawater &
HiVis sweeps
Returns to seabed

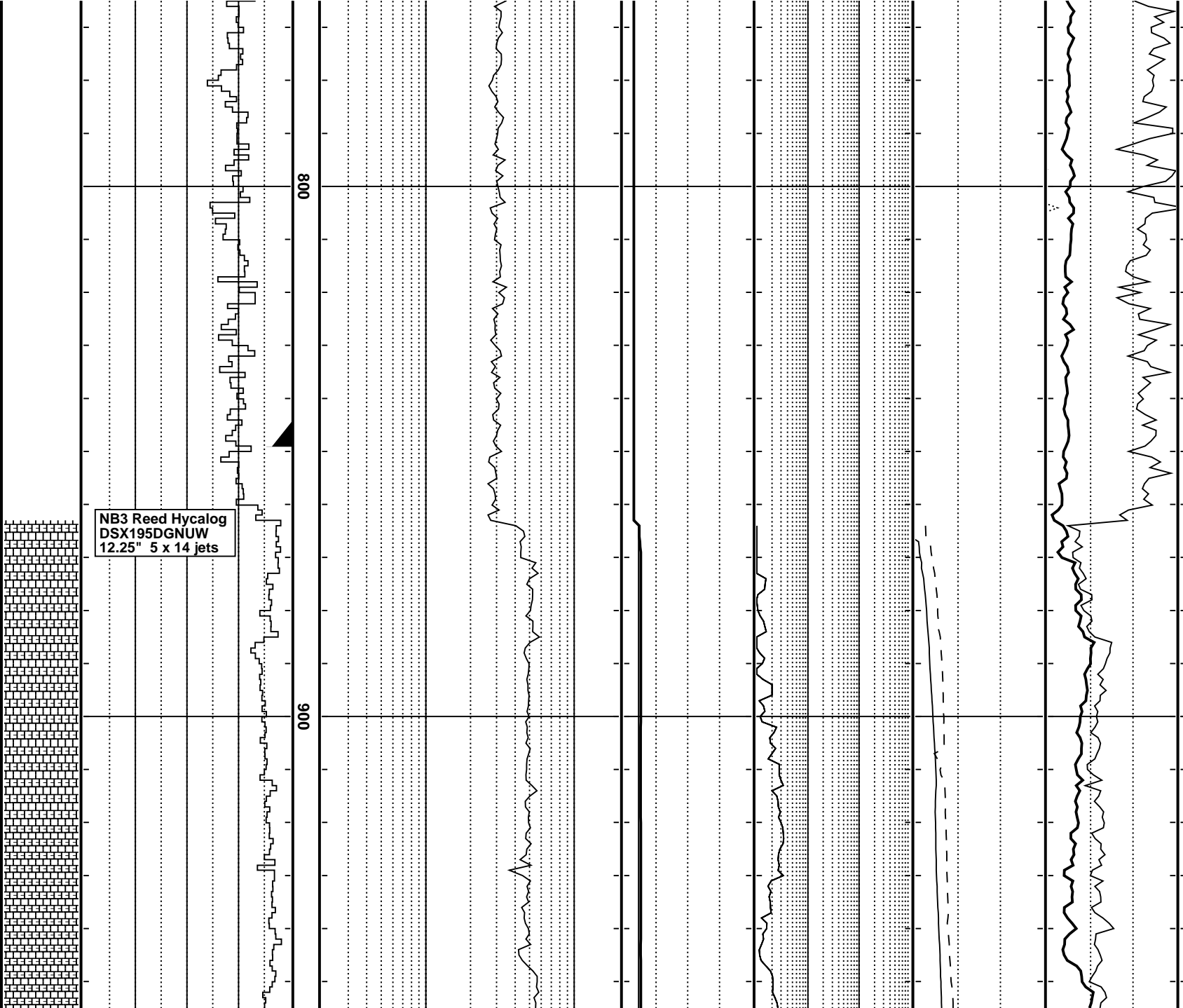
Drill with seawater &
HiVis sweeps
Returns to seabed



400

500





NB3 Reed Hycalog
DSX195DGNUW
12.25" 5 x 14 jets

008

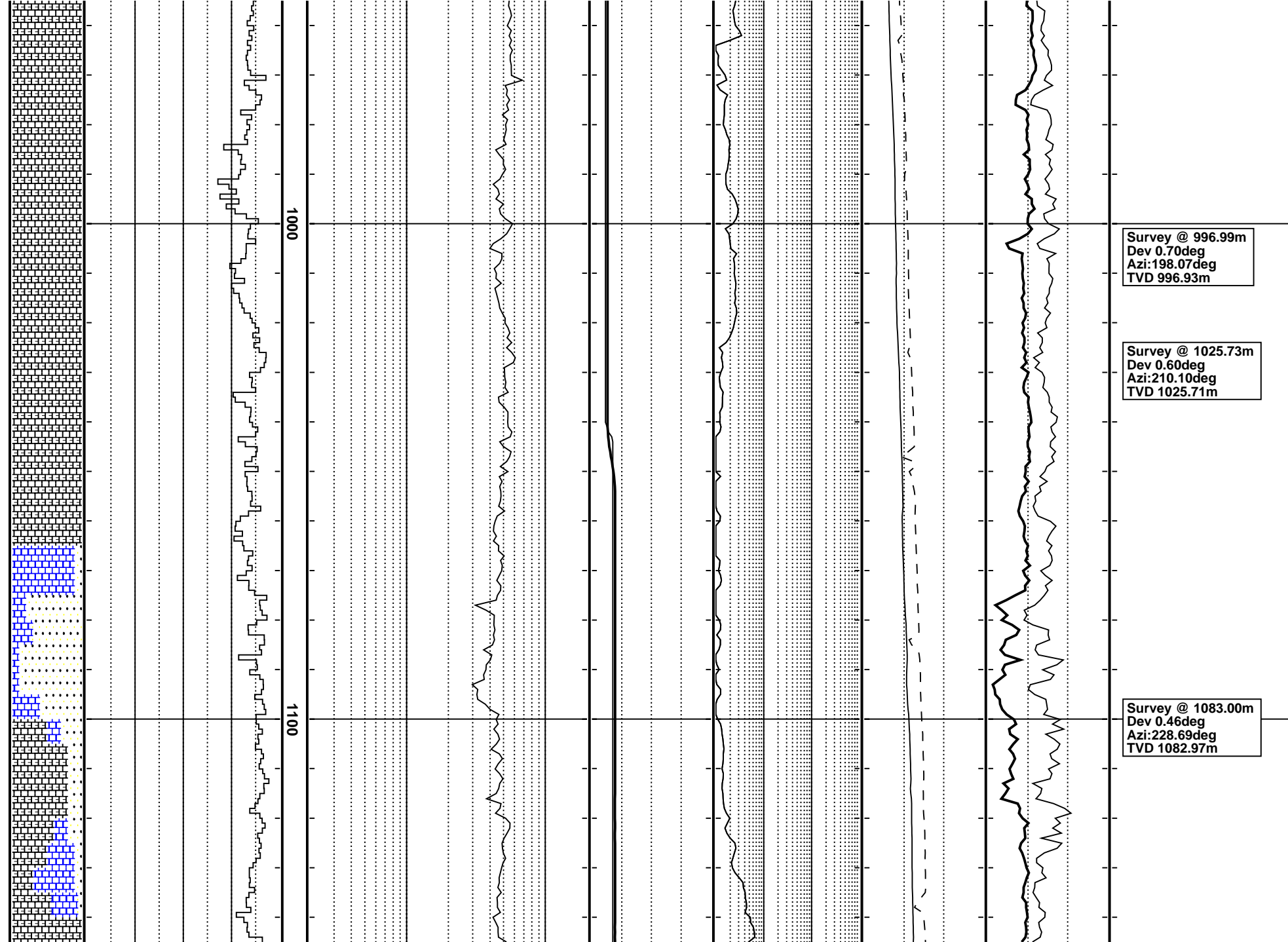
006

Drill with seawater &
HiVis sweeps
Returns to seabed

Drill with seawater &
HiVis sweeps
Returns to seabed

Drill 17.5" hole to 863m
Set 13.375" csg shoe @
849.1m
Drill ahead 12.25" hole

Survey @ 907.95m
Dev 0.55deg
Azi:184.35deg
TVD 907.93m

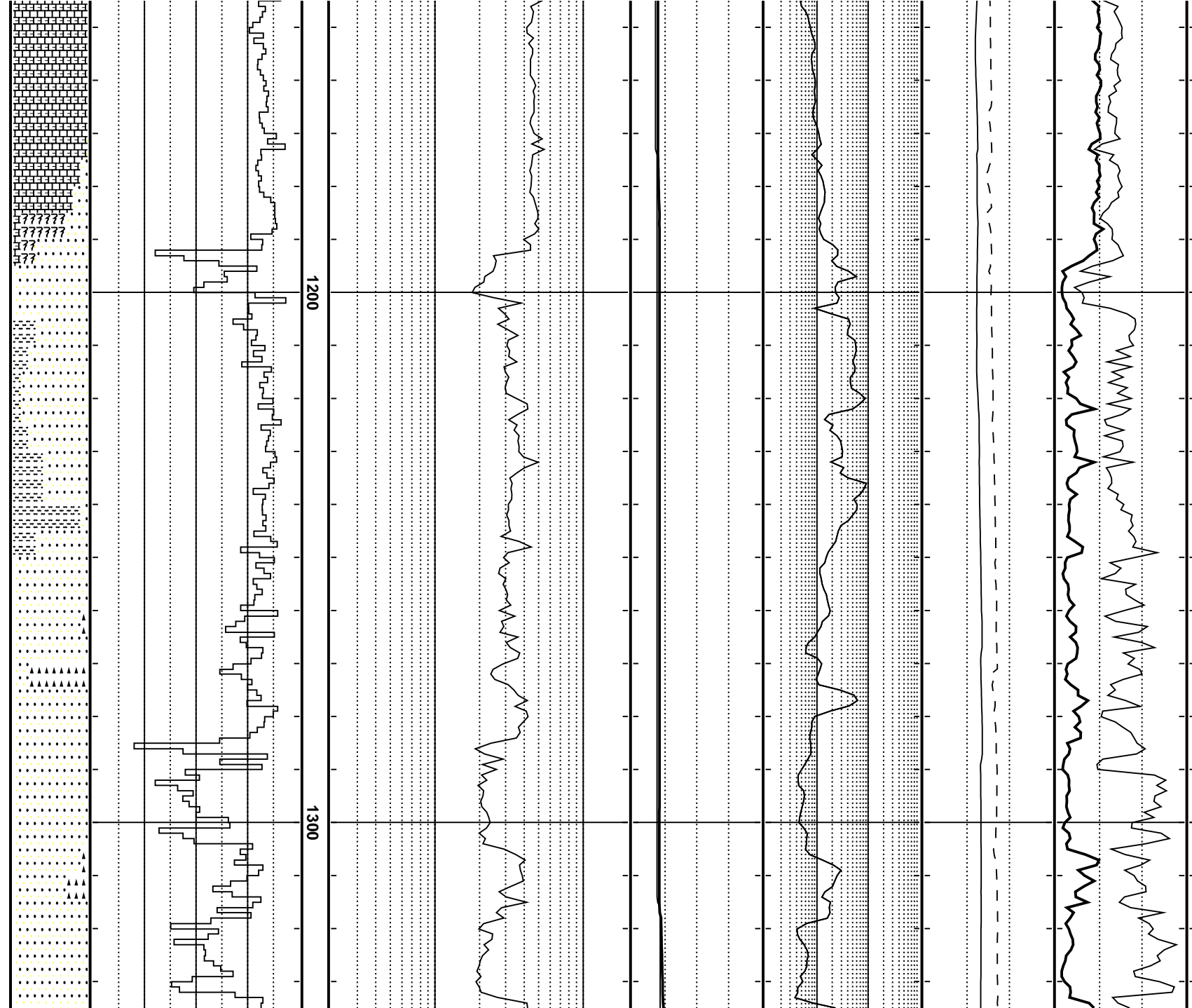


Survey @ 1169.99m
Dev 0.47deg
Azi:231.26deg
TVD 1169.96m

FLC @ 1186m (static)

Survey @ 1257.42m
Dev 0.51deg
Azi:245.44deg
TVD 1257.39m

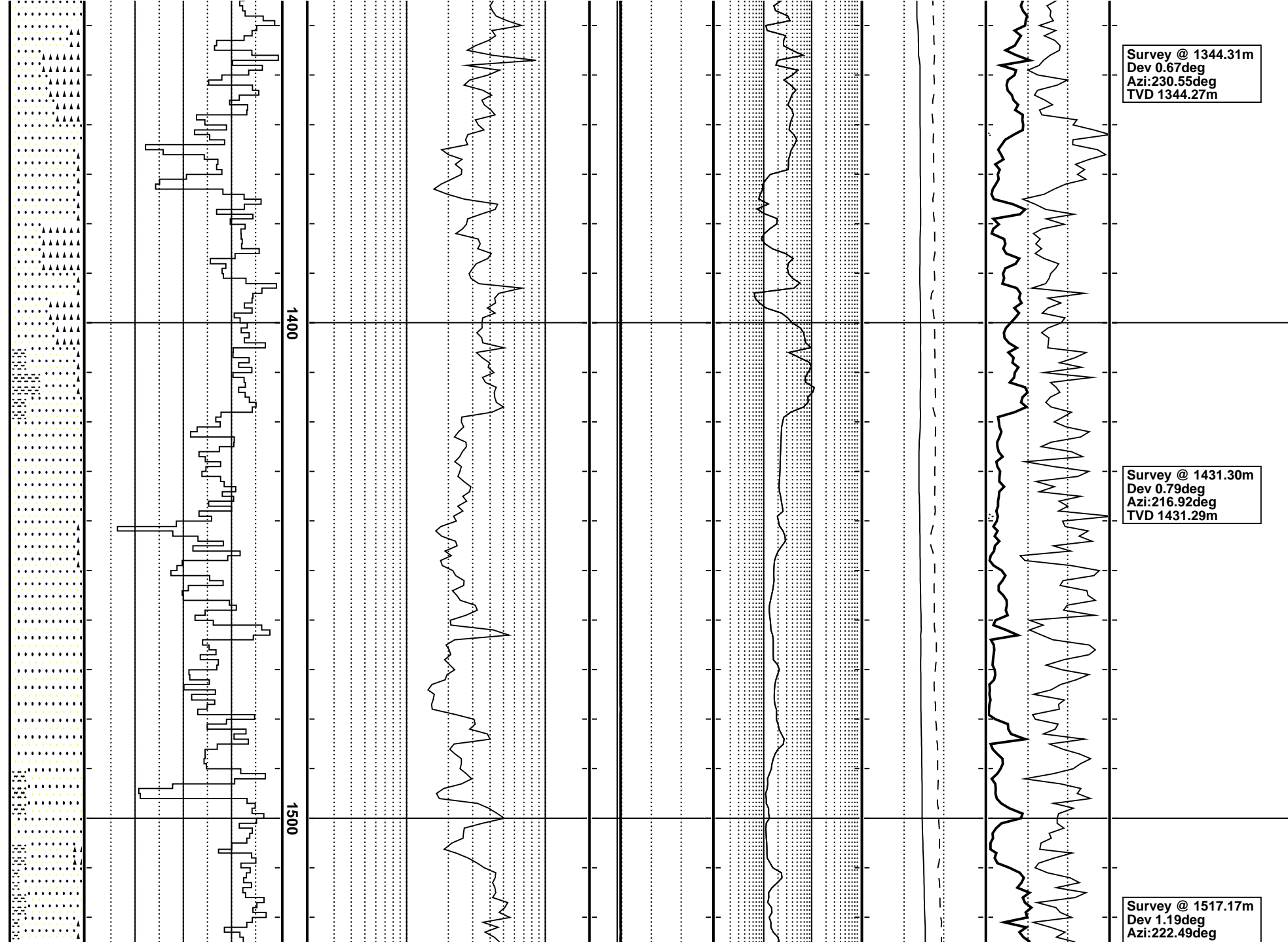
FLC @ 1287m (static)



Survey @ 1344.31m
Dev 0.67deg
Azi: 230.55deg
TVD 1344.27m

Survey @ 1431.30m
Dev 0.79deg
Azi: 216.92deg
TVD 1431.29m

Survey @ 1517.17m
Dev 1.19deg
Azi: 222.49deg



Survey @ 1551.21m
Dev 1.09deg
Azi:226.63deg
TVD 1551.15m

FLC @ 1579m (static)

FLC @ 1627m (static)

NB4 Reed EHP51HKPRDH
12.25" 3 x 18 jets

1600

1700

Survey @ 1725.47m
Dev 0.90deg
Azi:209.82deg
TVD 1725.38m

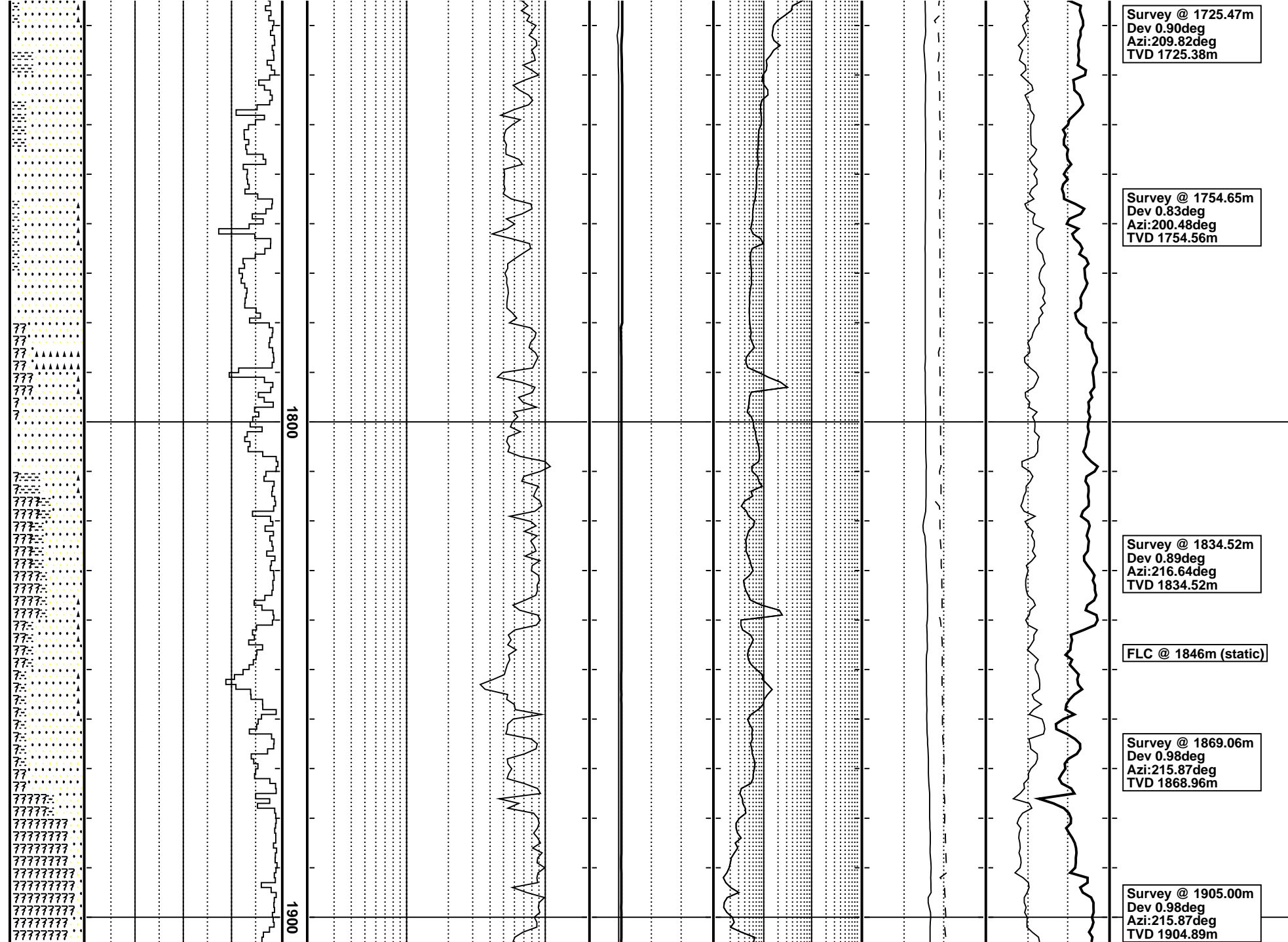
Survey @ 1754.65m
Dev 0.83deg
Azi:200.48deg
TVD 1754.56m

Survey @ 1834.52m
Dev 0.89deg
Azi:216.64deg
TVD 1834.52m

FLC @ 1846m (static)

Survey @ 1869.06m
Dev 0.98deg
Azi:215.87deg
TVD 1868.96m

Survey @ 1905.00m
Dev 0.98deg
Azi:215.87deg
TVD 1904.89m



Run E-Logs
Loggers TD 1909.5m
MDRT
Run#1: DUAL-AXIS
DENSITY-PEX-HALS-
LEHQT
Run#2: FMI-DSI-HNGS-
GR-LEHQT
Run#3: MDT-GR-LEHQT
Run#4: DUAL CSAT-VSP
Run#5: CST-GR
60 shots: 45 rec'd, 15
misfire
Run#6: DSI-GR (Re-run)

2000

[illegible]