

Company: Esso Australia Pty Ltd.

Well: A-26
Field: Flounder
Rig : Prod4 / Crane
Country: Australia

2 1/8" Phased Powerjet
Mwpt Perforation
5" HPI Plug Setting Record

Prod4 / Crane
Flounder
Gippsland
A-26
Esso Australia Pty Ltd.

Logging Date		12-Feb-2007	Longitude		Latitude
Run Number	2 & 3		148 18'17.12"E	038 18'44.65"S	
Depth Driller	2699.6 m				
Schlumberger Depth	2694 m				
Bottom Log Interval	2694 m				
Top Log Interval	2650 m				
Casing Fluid Type	Production Fluids				
Salinity					
Density					
Fluid Level					
BIT/CASING/TUBING STRING					
Bit Size	8.500 in				
From					
To					
Casing/Tubing Size	7.000 in				
Weight	26 lbm/ft				
Grade	K-55				
From	13.1 m				
To	2787.54 m				
Maximum Recorded Temperatures	110 degC				
Logger On Bottom	12-Feb-2007		12:00		
Unit Number	889	Prod4 / Ausl			
Recorded By	S Gilbert & G Wright.				
Witnessed By	B White & B Robinson.				

Run 1		
Oil Density		
Water Salinity		
Gas Gravity		
Bo		
Bw		
1/Bg		
Bubble Point Pressure		
Bubble Point Temperature		
Solution GOR		
Maximum Deviation	28 deg	
CEMENTING DATA		
Primary/Squeeze	Primary	
Casing String No		
Lead Cement Type		
Volume		
Density		
Water Loss		
Additives		
Tail Cement Type		
Volume		
Density		
Water Loss		
Additives		
Expected Cement Top		
Logging Date		
Run Number		
Depth Driller		
Schlumberger Depth		
Bottom Log Interval		
Top Log Interval		
Casing Fluid Type		
Salinity		
Density		
Fluid Level		
BIT/CASING/TUBING STRING		
Bit Size		
From		
To		
Casing/Tubing Size		
Weight		
Grade		
From		
To		
Maximum Recorded Temperatures		
Logger On Bottom		
Unit Number		
Recorded By		
Witnessed By		

DEPTH SUMMARY LISTING

Date Created: 9-FEB-2007 11:27:21

Depth System Equipment

Depth Measuring Device		Tension Device		Logging Cable	
Type:	IDW-EB	Type:	CMTD-B/A	Type:	2-32ZT
Serial Number:	6373	Serial Number:	325357	Serial Number:	24426
Calibration Date:	04-JAN-2007	Calibration Date:	6-FEB-2007	Length:	6600.14 M
Calibrator Serial Number:	9	Calibrator Serial Number:	1174	Conveyance Method: Wireline Rig Type: Offshore_Mobile	
Calibration Cable Type:	2-32ZT	Calibration Gain:	0.90		
Wheel Correction 1:	-2	Calibration Offset:	197.00		
Wheel Correction 2:	-4				

Depth Control Parameters

Log Sequence:	Subsequent Log In the Well
Reference Log Name:	Solar Compersite Log
Reference Log Run Number:	
Reference Log Date:	02-Feb-2002

Depth Control Remarks

1. IDW used as primary depth control
2. Z Chart used as secondary depth control
3.
4.
5.
6.

DISCLAIMER

THE USE OF AND RELIANCE UPON THIS RECORDED-DATA BY THE HEREIN NAMED COMPANY (AND ANY OF ITS AFFILIATES, PARTNERS, REPRESENTATIVES, AGENTS, CONSULTANTS AND EMPLOYEES) IS SUBJECT TO THE TERMS AND CONDITIONS AGREED UPON BETWEEN SCHLUMBERGER AND THE COMPANY, INCLUDING: (a) RESTRICTIONS ON USE OF THE RECORDED-DATA; (b) DISCLAIMERS AND WAIVERS OF WARRANTIES AND REPRESENTATIONS REGARDING COMPANY'S USE OF AND RELIANCE UPON THE RECORDED-DATA; AND (c) CUSTOMER'S FULL AND SOLE RESPONSIBILITY FOR ANY INFERENCE DRAWN OR DECISION MADE IN CONNECTION WITH THE USE OF THIS RECORDED-DATA.

OTHER SERVICES1
OS1: RST-C
OS2: Sigma
OS3:
OS4:
OS5:

REMARKS: RUN NUMBER 1
Log correlated to Solar composite dated 03-Feb-2002.
Maximum well deviation = 28 degree's at 772m MDKB.
2 1/8" 45 degree Phased Powerjet at 6 spf used for this perforation.
Interval perforated was 2689.5m to 2690.5m MDKB
SBHP = 3123 psia, SBHT = 230 degf.
Underbalance was attempted and the gun was fired at 3104 psia.
A 5" HPI plug was then set with tthe top of the
















plug at 2694m MDKB.

Crew : J Annear,P Lawrence,B Flynn,L Dooley.

RUN 1			RUN 2		
SERVICE ORDER #:		AusI07336259			
PROGRAM VERSION:		14C0-302			
FLUID LEVEL:					
LOGGED INTERVAL	START	STOP	LOGGED INTERVAL	START	STOP

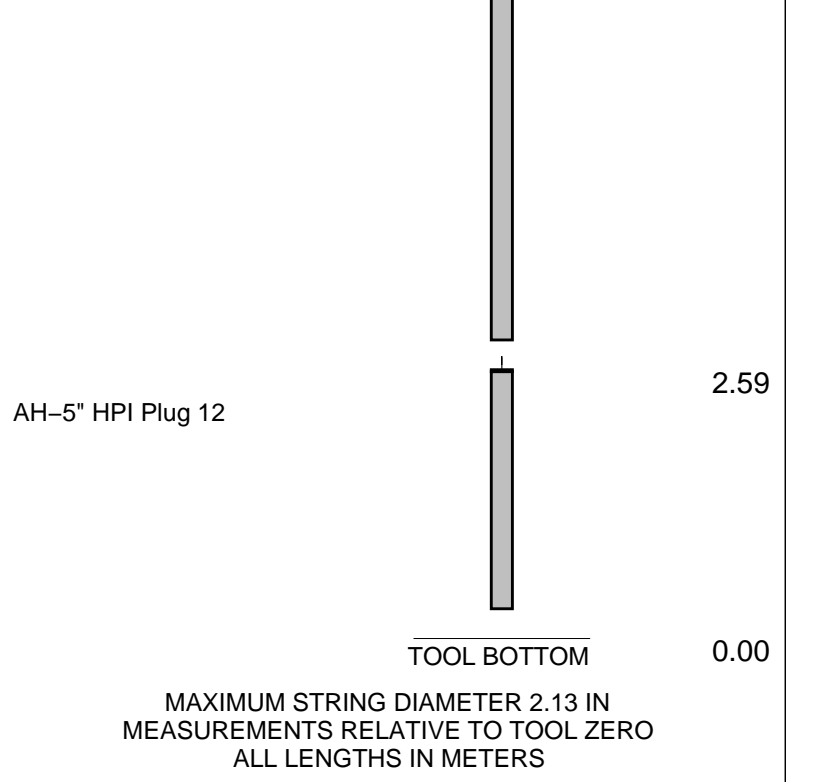
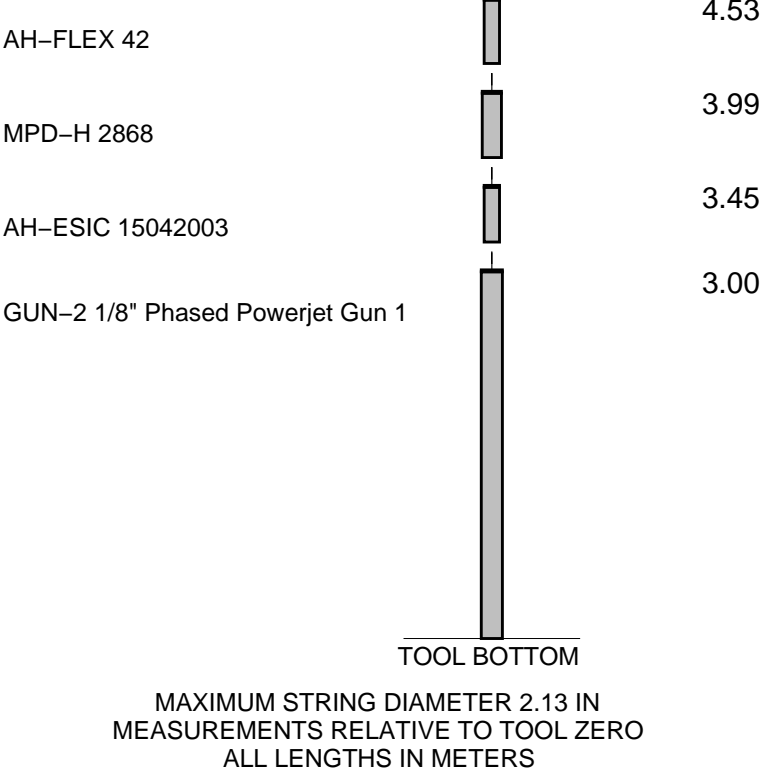
EQUIPMENT DESCRIPTION

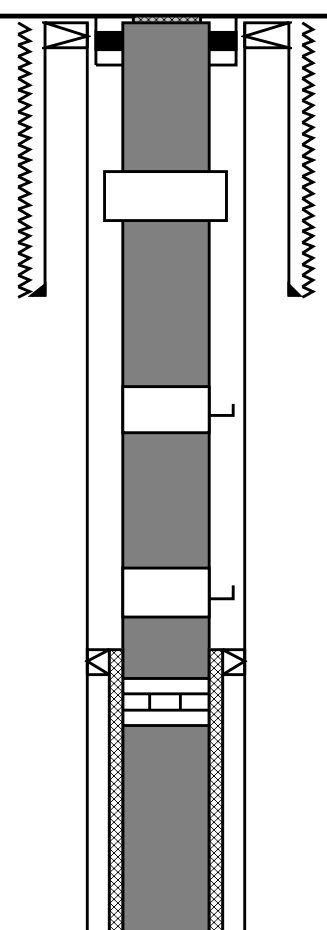
RUN 1		RUN 2	
SURFACE EQUIPMENT		SURFACE EQUIPMENT	
MWPM-AA 3008		WITM (SHM)	

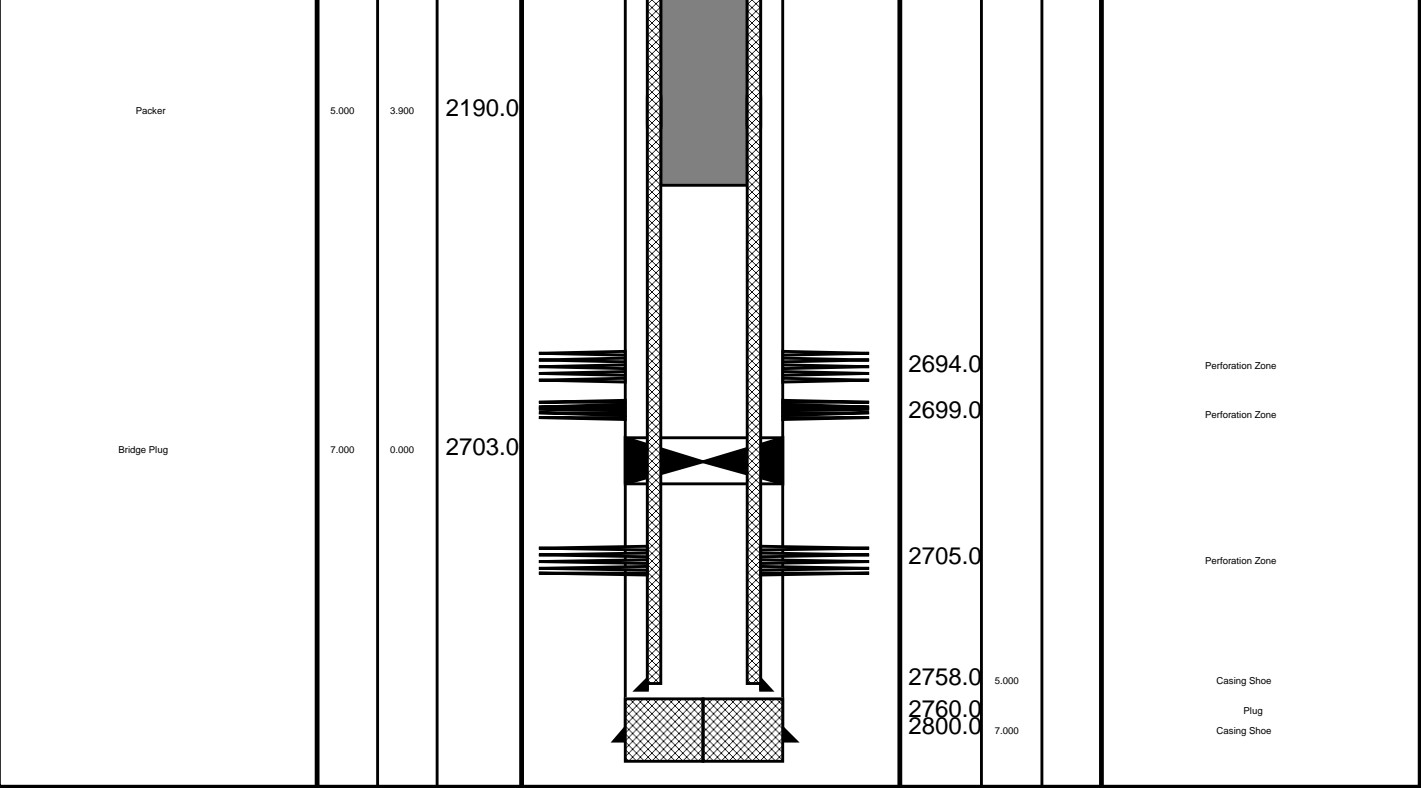
DOWNHOLE EQUIPMENT			DOWNHOLE EQUIPMENT		
AH-SWBS 731		11.95	AH-SWBS-B 761		16.69
AH-SWBS 761		11.27	AH-SWBS-B 762		16.00
AH-SWBS 762		10.58	AH-SWBS-B 763		15.32
AH-SWBS 763		9.90	MH-SWHS-A 726		14.63
MH-SWHS 726		9.21	CCL-L 4191 Tension CCL		14.30
MWPG-AA 24029 MWGH-AA 68		8.88	AH-HPI Actuator 200		13.84
MWPG GR		2.41	AH-Setting Tool 300		13.26
MWPH-AA 10 MWPS-AA 93		7.90			
		5.08			

CCL
SMWP Pres
SMWP Temp
Tension

TOOL ZERO



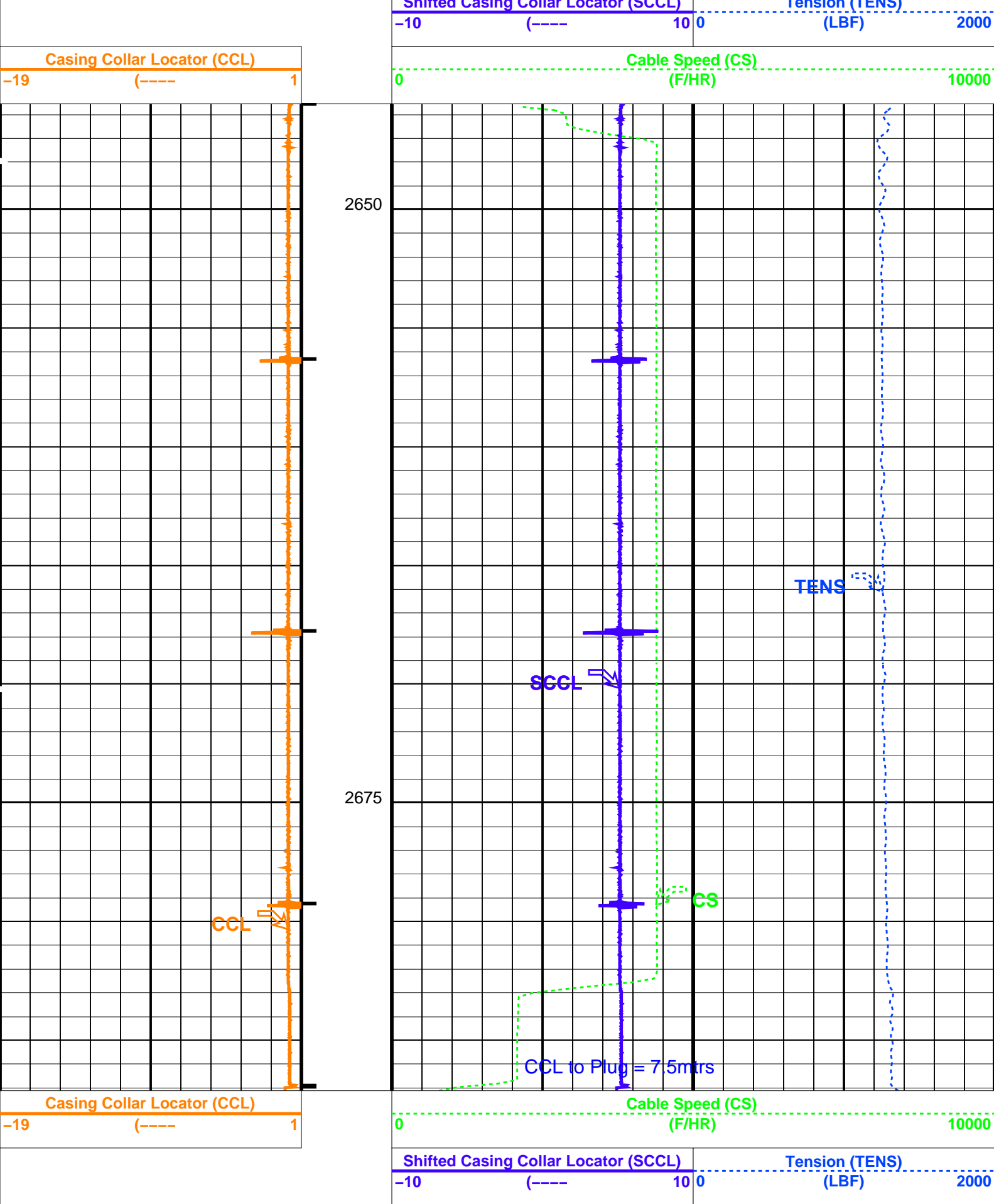
Production String	(in)		(m)	Well Schematic	(m)	(in)		Casing String
	OD	ID	MD		MD	OD	ID	
Tubing Hanger	6.270	3.000	12.0		13.0	12.000	10.750	Booster String
Tubing	3.900		13.0		15.0	7.000	10.750	Liner Hanger
SSSV	5.400	2.750	455.0					
					629.0	10.750		Surface Casing
Gas Lift Mandrel	3.900		835.0					
Gas Lift Mandrel	3.900		1201.0					
Landing Nipple	3.900		1217.0		1210.0	5.000		Scab Liner



Log Down to Set 5" HPI Plug
Set @ 2694m MDKB

MAXIS Field Log

Input DLIS Files					
DEFAULT	FLIP_PERFO_049	PRODUCER	12-Feb-2007 16:48	2687.1 M	2645.1 M
Output DLIS Files					
DEFAULT	PERFO_050PUP	FN:47	PRODUCER	12-Feb-2007 16:49	2687.1 M 2645.5 M
OP System Version: 14C0-302					
MCM					
MWP_GUN	SRC-3220-WPP-AAP\$	MWPT-CA	SRC-3220-WPP-AAP\$		
MWGT-AA	SRC-3220-WPP-AAP\$				



PIP SUMMARY

└─ Casing Collars

Time Mark Every 60 S

Parameters

DLIS Name	Description	Value	
MWPT-CA: MEASUREMENT WHILE PERFORATING TOOL			
CCLD	CCL reset delay	12	IN
CCLT	CCL detection level	0.3	V
DEVI_FL_CORR	Deviation Angle for Flow Line Correction	0	DEG
FLD	Flow Line Density	1	G/C3
MWPT_NULL_SOURCE	MWPT NULL Temperature Source	TEMS	
MWPT_NULL_TEMP	MWPT NULL Temperature	0.0	DEGC
System and Miscellaneous			
DO	Depth Offset for Playback	0.0	M
PP	Playback Processing	NORMAL	


Format: PERFO

Vertical Scale: 1:200

Graphics File Created: 12-Feb-2007 16:49

OP System Version: 14C0-302			
MCM			
MWP_GUN	SRC-3220-WPP-AAP5	MWPT-CA	SRC-3220-WPP-AAP5
MWGT-AA	SRC-3220-WPP-AAP5		

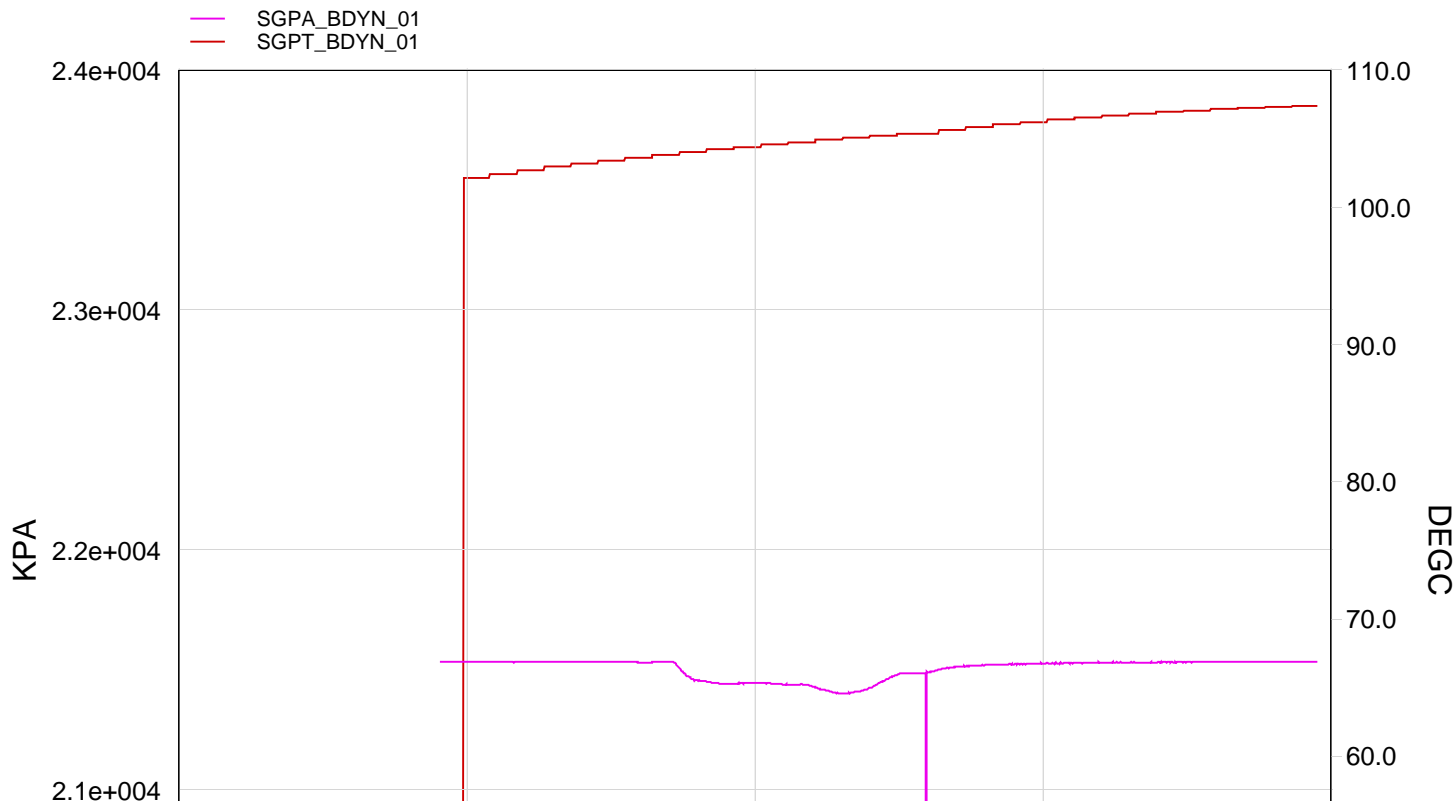
Input DLIS Files					
DEFAULT	FLIP_PERFO_049	PRODUCER	12-Feb-2007 16:48	2687.1 M	2645.1 M
Output DLIS Files					
DEFAULT	PERFO_050PUP	FN:47	PRODUCER	12-Feb-2007 16:49	

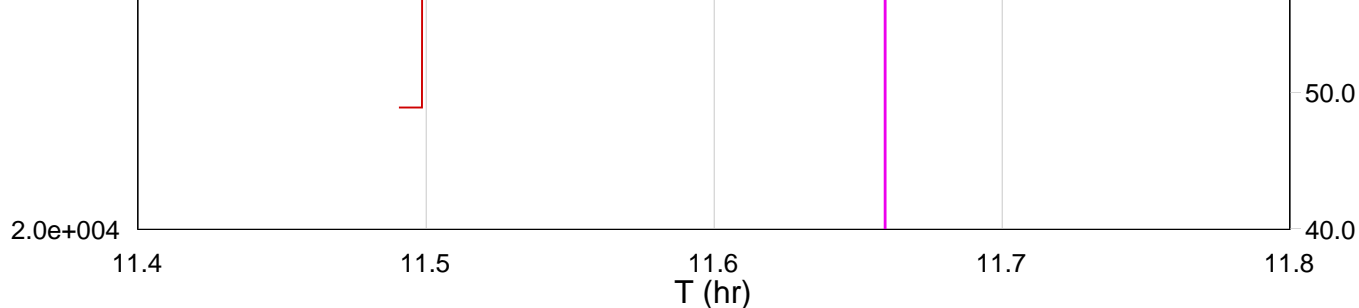


Gun # 1

2689.5m to 2690.5m MDKB

MAXIS Field Log





TIME	PSIA	DEGF
3150.0	3123.4531	232.0086
3120.0	3123.5162	231.9618
3090.0	3123.4531	231.9359
3060.0	3123.4392	231.9333
3030.0	3123.4280	232.0286
3000.0	3123.4280	232.0910
2970.0	3123.1995	232.1812
2940.0	3123.2048	232.3634
2910.0	3123.0458	232.5812
2880.0	3122.9163	232.7452
2850.0	3122.7760	233.1066
2820.0	3122.7870	233.4616
2790.0	3122.4516	233.9776
2760.0	3122.0088	234.4835
2730.0	3121.3571	235.2176
2700.0	3120.6095	235.7154
2670.0	3118.2038	242.2171
2640.0	3116.5342	231.2947
2610.0	3113.1593	231.2965
2580.0	3106.1643	231.2976
2550.0	3104.4497	231.2886
2520.0	3108.2526	231.2844
2490.0	3109.5736	231.2896
2460.0	3110.5146	231.2904
2430.0	3110.4871	231.2967
2400.0	3110.3338	231.2844
2370.0	3112.6119	231.0898
2340.0	3123.4422	230.8416
2310.0	3123.0127	230.8069
2280.0	3123.4971	230.7932
2250.0	3123.4643	230.7998
2220.0	3123.5818	230.8009
2190.0	3123.5627	230.8113
2160.0	3123.5380	230.8105
2130.0	3123.6065	230.8105
2100.0	3123.5159	230.8199
2070.0	3123.5627	230.8147
2040.0	3123.4646	230.8000

Company: Esso Australia Pty Ltd.

Well: A-26

Output DLIS Files

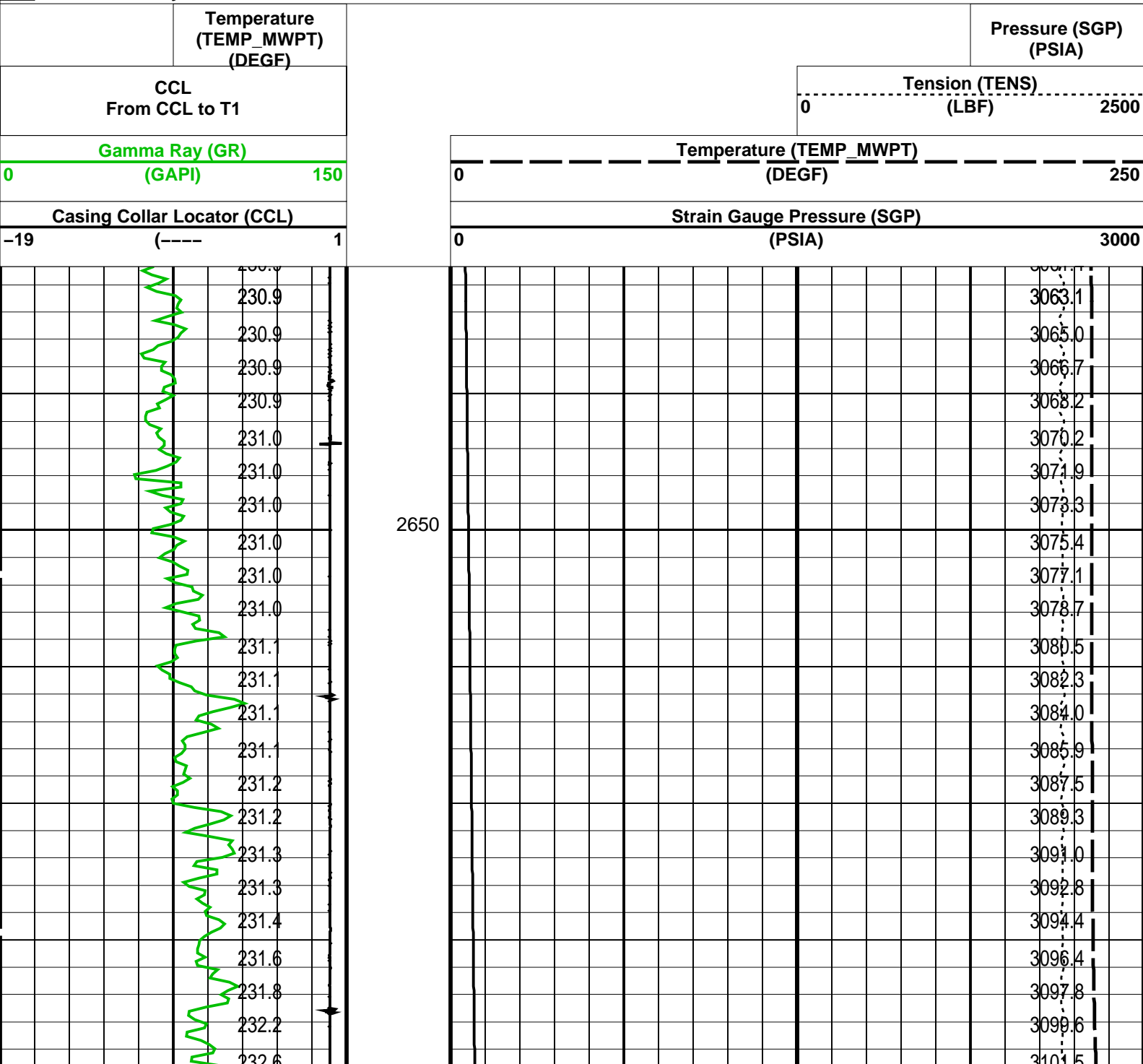
DEFAULT PERFO_035LUP FN:33 PRODUCER 12-Feb-2007 11:25

OP System Version: 14C0-302
MCM

MWP_GUN SRC-3220-WPP-AAP\$ MWPT-CA SRC-3220-WPP-AAP\$
MWGT-AA SRC-3220-WPP-AAP\$

PIP SUMMARY

Time Mark Every 60 S



Company: Esso Australia Pty Ltd. Well: A-26

Output DLIS Files

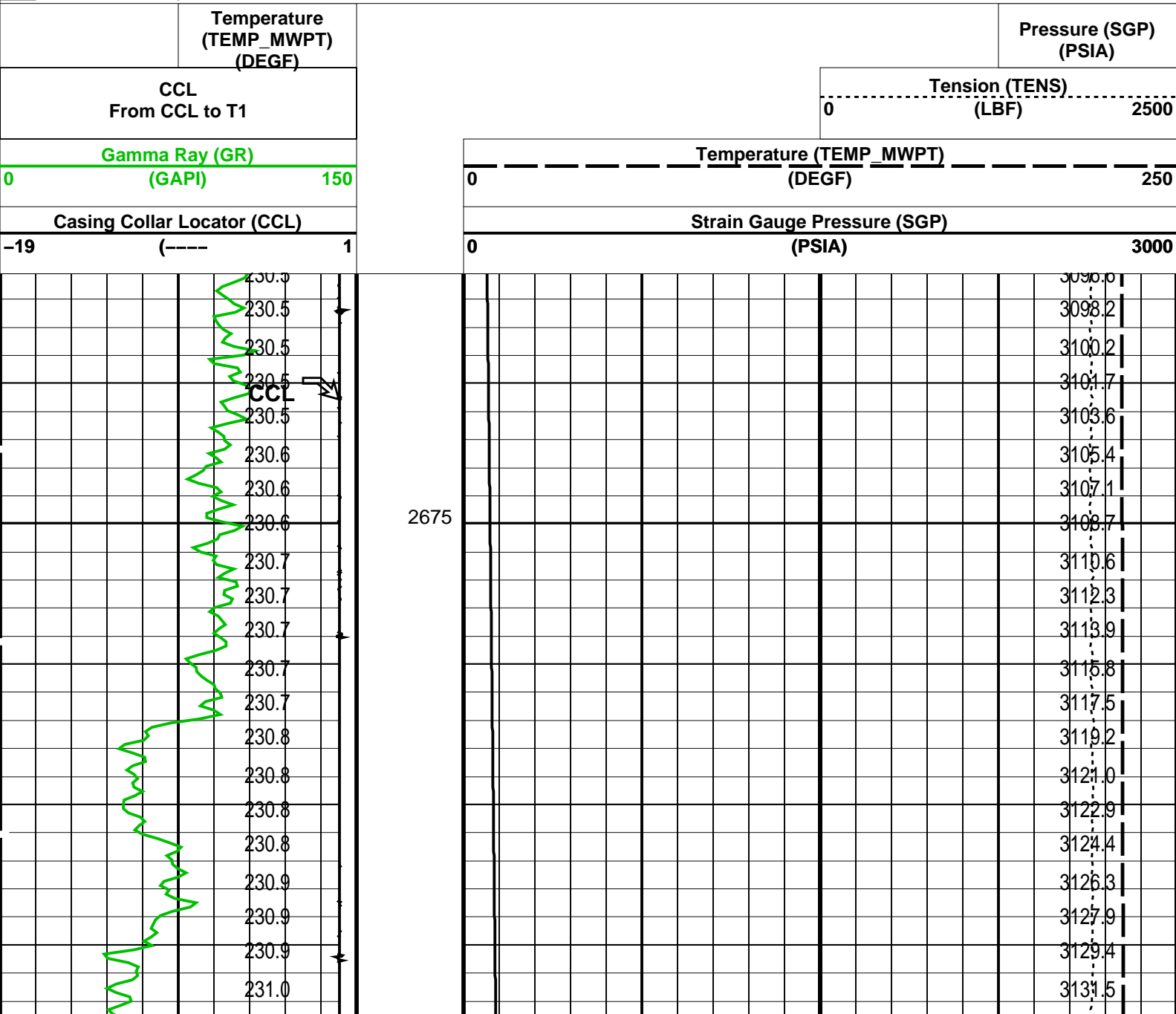
DEFAULT PERFO_034LUP FN:32 PRODUCER 12-Feb-2007 11:19

OP System Version: 14C0-302
MCM

MWP_GUN SRC-3220-WPP-AAP SRC-3220-WPP-AAP MWPT-CA SRC-3220-WPP-AAP
MWGT-AA SRC-3220-WPP-AAP SRC-3220-WPP-AAP

PIP SUMMARY

Time Mark Every 60 S



Company:	Esso Australia Pty Ltd.	Schlumberger
Well:	A-26	
Field:	Flounder	
Rig :	Prod4 / Crane	
Country:	Australia	
2 1/8" Phased Powerjet Mwpt Perforation 5" HPI Plug Setting Record		