

Company: Esso Australia Pty Ltd.

Well: A-8

Field: Flounder

Rig: Crane / Prod4

Country: Australia

2-1/8" Phased Powerjet MWPT
Perforation Record
7 5/8" Posiset Plug Setting Record

Rig:Crane / Prod4

Field:Flounder

Location:Gippsland

Well:A-8

Company:Esso Australia Pty Ltd.

LOCATION

Gippsland

Basin

Bass Strait

Elev.:K.B.40.8 m

G.L.-93 m

D.F.40.8 m

Permanent Datum:M.S.L.

Log Measured From:K.B.

Drilling Measured From:K.B.

State:Victoria

Max. Well Deviation29 deg

Longitude148° 26' 21.748"E

Latitude38° 18' 39.245"S

Logging Date	9-Sep-2008
Run Number	2 thru 5
Depth Driller	2675 m
Schlumberger Depth	2675 m
Bottom Log Interval	2675 m
Top Log Interval	2600 m
Casing Fluid Type	Production Fluids
Salinity	
Density	
Fluid Level	1195 m
BIT/CASING/TUBING STRING	
Bit Size	9.625 in
From	649 m
To	3026 m
Casing/Tubing Size	7.625 in
Weight	29.7 lbm/ft
Grade	N-80
From	19.56 m
To	3022 m
Maximum Recorded Temperatures	231 degF
Logger On Bottom	9-Sep-2008
Unit Number	889
Recorded By	G Wright.
Witnessed By	D Madden.

Run 1	
Oil Density	
Water Salinity	
Gas Gravity	
Bo	
Bw	
1/Bq	
Bubble Point Pressure	
Bubble Point Temperature	
Solution GOR	
Maximum Deviation	29 deg
CEMENTING DATA	
Primary/Squeeze	Primary
Casing String No	
Lead Cement Type	
Volume	
Density	
Water Loss	
Additives	
Tail Cement Type	
Volume	
Density	
Water Loss	
Additives	
Expected Cement Top	
Logging Date	
Run Number	
Depth Driller	
Schlumberger Depth	
Bottom Log Interval	
Top Log Interval	
Casing Fluid Type	
Salinity	
Density	
Fluid Level	
BIT/CASING/TUBING STRING	
Bit Size	
From	
To	
Casing/Tubing Size	
Weight	
Grade	
From	
To	
Maximum Recorded Temperatures	
Logger On Bottom	
Unit Number	
Recorded By	
Witnessed By	

DEPTH SUMMARY LISTING

Date Created: 5-SEP-2008 12:54:08

Depth System Equipment

Depth Measuring Device	Tension Device	Logging Cable
Type: IDW-BE Serial Number: 6373 Calibration Date: 01-Dec-2007 Calibrator Serial Number: 9 Calibration Cable Type: 2-32ZT Wheel Correction 1: -2 Wheel Correction 2: -4	Type: PSDS/OSDS Serial Number: Calibration Date: 02-Sep-08 Calibrator Serial Number: 1174 Calibration Gain: 1.00 Calibration Offset: 0.00	Type: 2-32ZT Serial Number: 208196 Length: 6939.99 M Conveyance Method: Wireline Rig Type: Rigless

Depth Control Parameters

Log Sequence:	Subsequent Log In the Well
Reference Log Name:	FLA A8 Petrophysical Analysis.
Reference Log Run Number:	1
Reference Log Date:	

Depth Control Remarks

1. IDW-BE 6373 used as primary depth control.
2. Z-Chart used as back-up.

DISCLAIMER

THE USE OF AND RELIANCE UPON THIS RECORDED-DATA BY THE HEREIN NAMED COMPANY (AND ANY OF ITS AFFILIATES, PARTNERS, REPRESENTATIVES, AGENTS, CONSULTANTS AND EMPLOYEES) IS SUBJECT TO THE TERMS AND CONDITIONS AGREED UPON BETWEEN SCHLUMBERGER AND THE COMPANY, INCLUDING: (a) RESTRICTIONS ON USE OF THE RECORDED-DATA; (b) DISCLAIMERS AND WAIVERS OF WARRANTIES AND REPRESENTATIONS REGARDING COMPANY'S USE OF AND RELIANCE UPON THE RECORDED-DATA; AND (c) CUSTOMER'S FULL AND SOLE RESPONSIBILITY FOR ANY INFERENCE DRAWN OR DECISION MADE IN CONNECTION WITH THE USE OF THIS RECORDED-DATA.

OTHER SERVICES1
OS1: RST-C Sigma
OS2: Survey

REMARKS: RUN NUMBER 1
Log correlated to ExxonMobil Composite Log supplied with logging program.
Maximum well deviation = 29 degrees at 2664m MDKB.
Run one well was perforated over the interval 2661m to 2662.5m MDKB using
2 1/8"45 degree phased powerjet at 6 shots per foot.
SBHP = 3242 psia,SBHT = 232 degf.
After firing the gun 3227 psia,238 degf.
7 5/8" Mpb plug was then set at 2675m MDKB,followed by water and
cement dump runs.

HUD = 2674.2m MDKB.

Crew : John Light & Chris Shiells.

```

RUN 1
SERVICE ORDER #: AUSL08602233
PROGRAM VERSION: 15C0-309
FLUID LEVEL: 1195 m

```

EQUIPMENT	DESCRIPTION
1	...
2	...
3	...
4	...
5	...
6	...
7	...
8	...
9	...
10	...
11	...
12	...
13	...
14	...
15	...
16	...
17	...
18	...
19	...
20	...
21	...
22	...
23	...
24	...
25	...
26	...
27	...
28	...
29	...
30	...
31	...
32	...
33	...
34	...
35	...
36	...
37	...
38	...
39	...
40	...
41	...
42	...
43	...
44	...
45	...
46	...
47	...
48	...
49	...
50	...
51	...
52	...
53	...
54	...
55	...
56	...
57	...
58	...
59	...
60	...
61	...
62	...
63	...
64	...
65	...
66	...
67	...
68	...
69	...
70	...
71	...
72	...
73	...
74	...
75	...
76	...
77	...
78	...
79	...
80	...
81	...
82	...
83	...
84	...
85	...
86	...
87	...
88	...
89	...
90	...
91	...
92	...
93	...
94	...
95	...
96	...
97	...
98	...
99	...
100	...

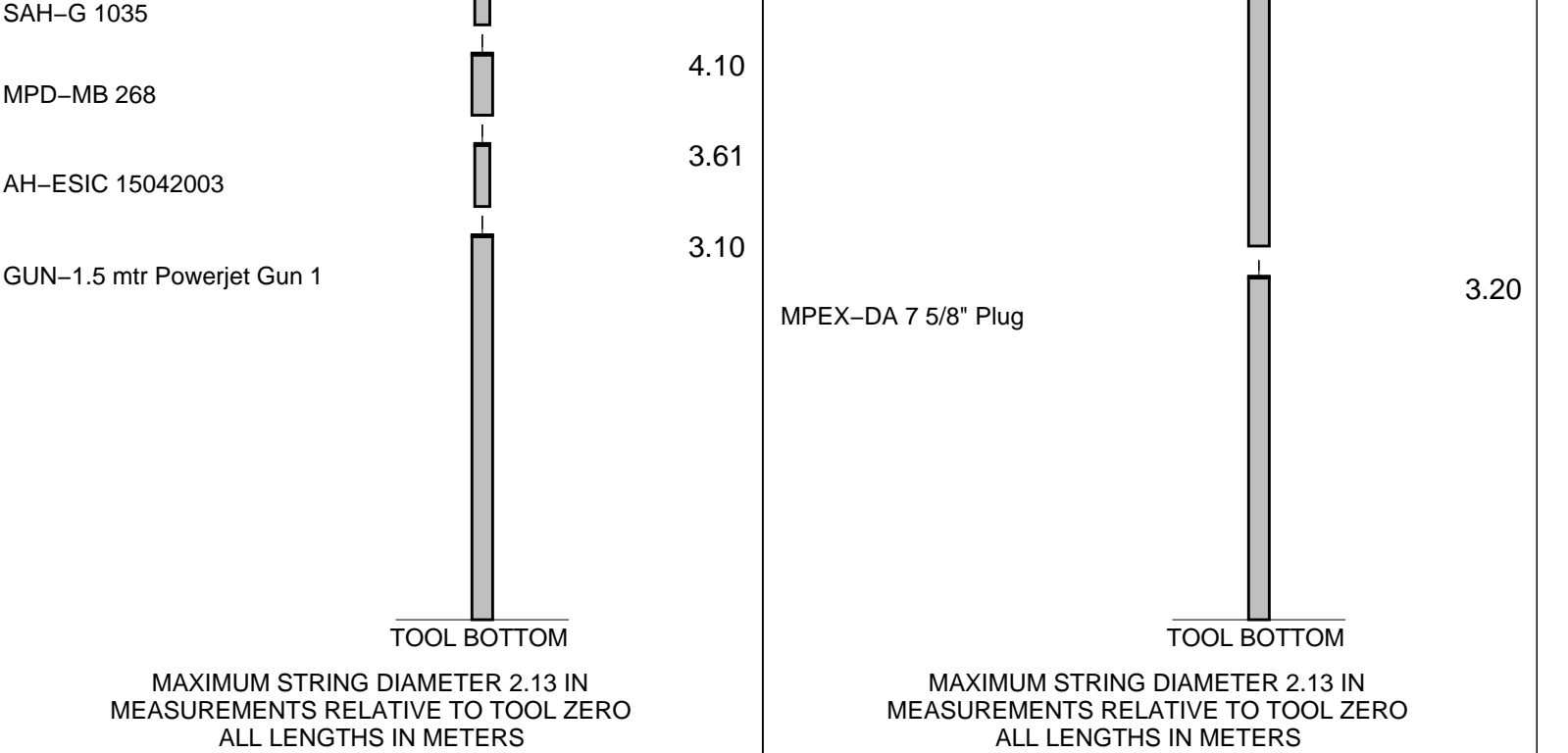
SURFACE EQUIPMENT

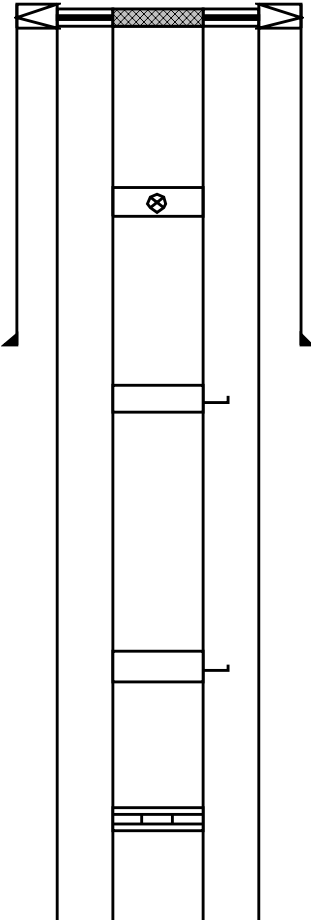
DOWNHOLE EQUIPMENT

AH-SWBS 786AH-SWBS 787AH-SWBS 788

AH-SWHS-A 759

MWPG-AA 24029MW/PT CA BLK2AH-SWBS 786AH-SWBS 787ART COWBOY 700MPSU-CA 1011



Production String	(in)		(m)	Well Schematic	(m)	(in)		Casing String
	OD	ID	MD		MD	OD	ID	
Tubing	3.500		21.7		19.6	10.025		Casing String
Tubing Hanger	7.625	3.500	20.0		19.6	10.750	7.625	Liner Hanger
Shutin Valve	3.500		443.0					
Gas Lift Mandrel	3.500		808.0		649.0	10.750		Casing Shoe
Gas Lift Mandrel	3.500		1319.0					
Nipple	3.500		1615.0					

Log Pass (down) 9-Sep-2008 16:07 000:26 13.6 - 2666.4 PERFO_043LUP
Log Pass (up) 9-Sep-2008 16:35 000:04 2666.4 - 2608.0 PERFO_046LUP
Log Pass (up) 9-Sep-2008 17:02 000:04 63.2 - -2.3 PERFO_050LUP

Schlumberger

Cement Dump

MAXIS Field Log

Output DLIS Files

DEFAULT PERFO_046LUP FN:44 PRODUCER 09-Sep-2008 16:35 2666.4 M 2608.0 M

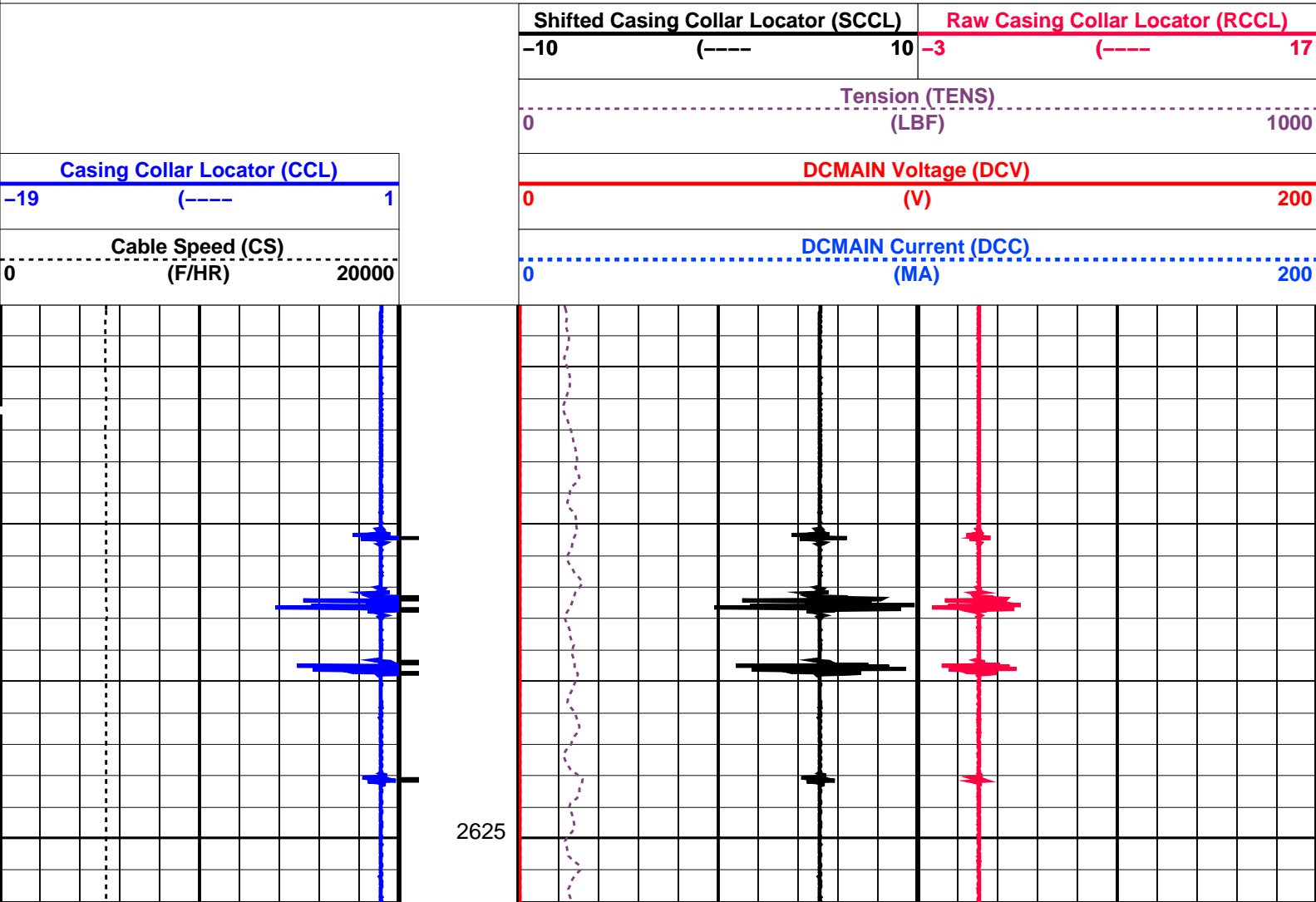
OP System Version: 15C0-309
MCM

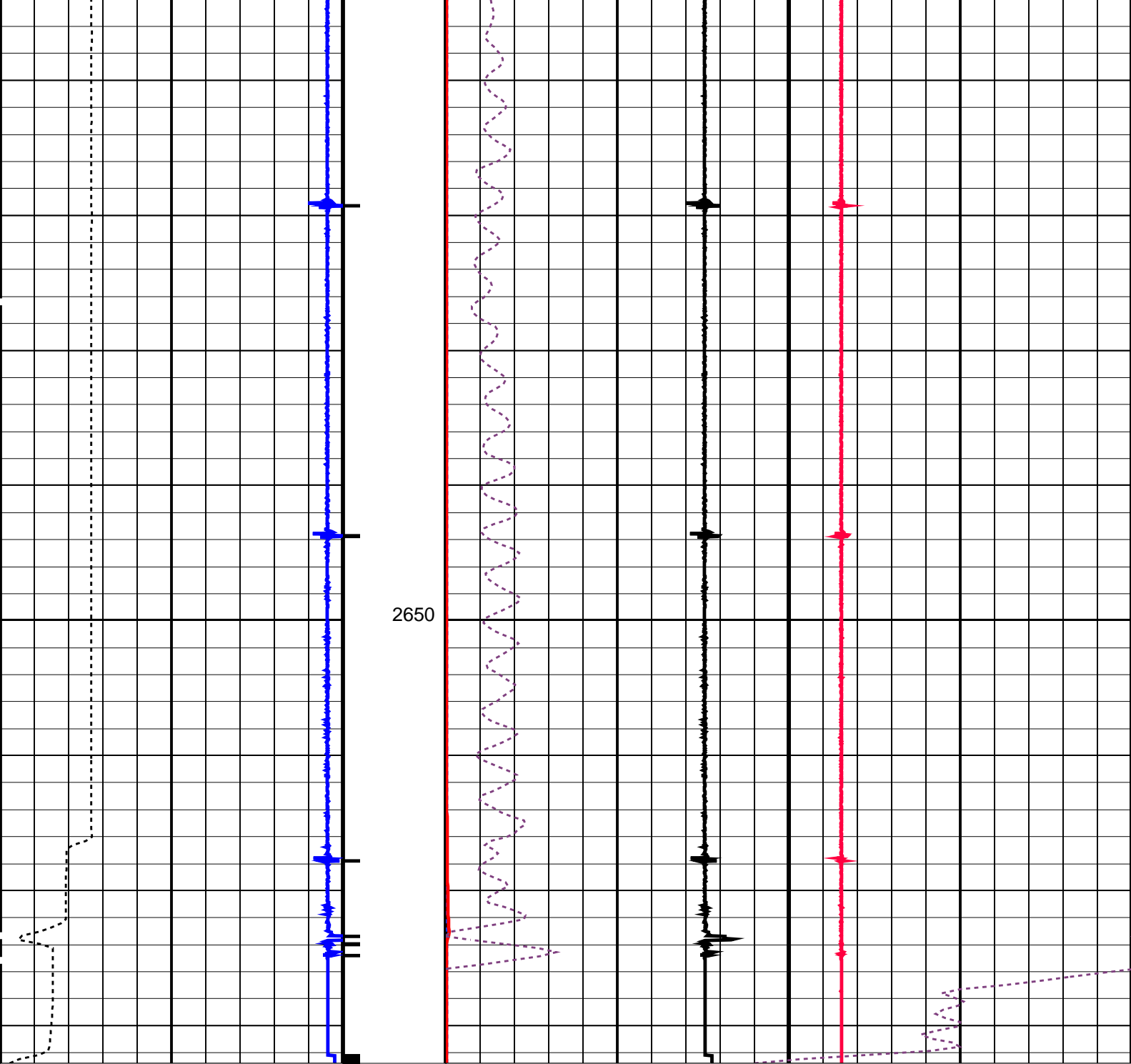
SHM_GUN SRPC-3546-Q1_2008_OP15 CCL-L SRPC-3546-Q1_2008_OP15

PIP SUMMARY

Casing Collars

Time Mark Every 60 S





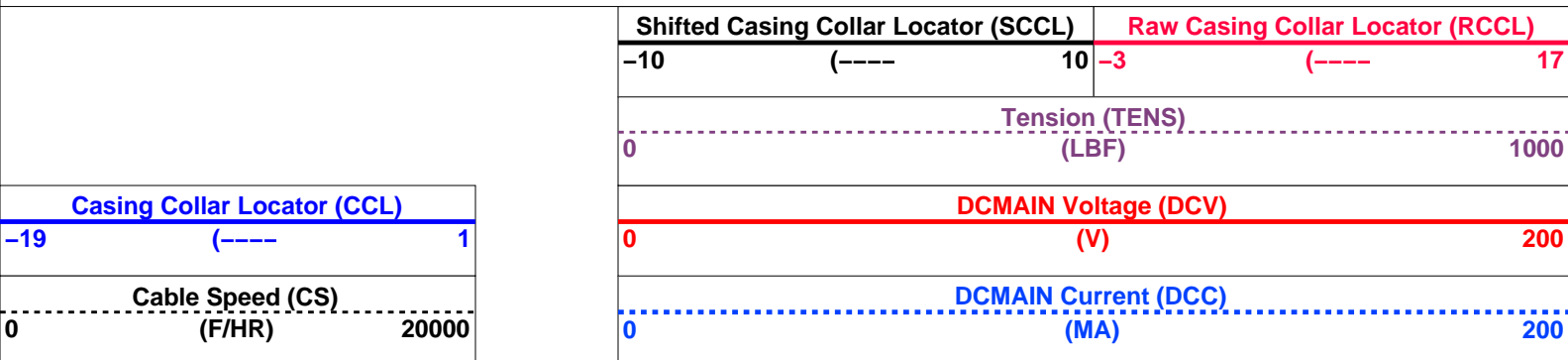
Cable Speed (CS) (F/HR)		0	20000
Casing Collar Locator (CCL)		-19	1
DCMAIN Current (DCC) (MA)		0	200
DCMAIN Voltage (DCV) (V)		0	200
Tension (TENS) (LBF)		0	1000
Shifted Casing Collar Locator (SCCL)	Raw Casing Collar Locator (RCCL)	-10	10
		-3	17

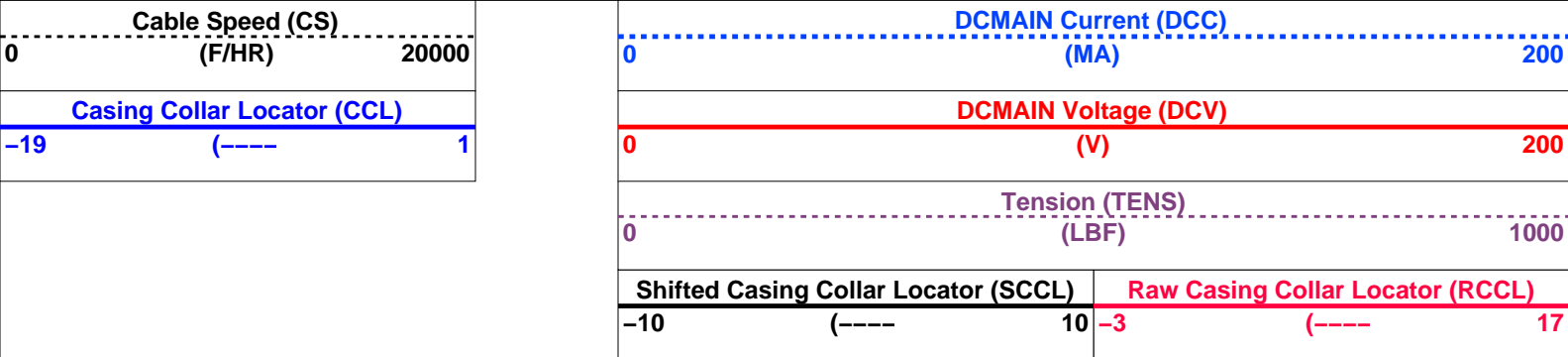
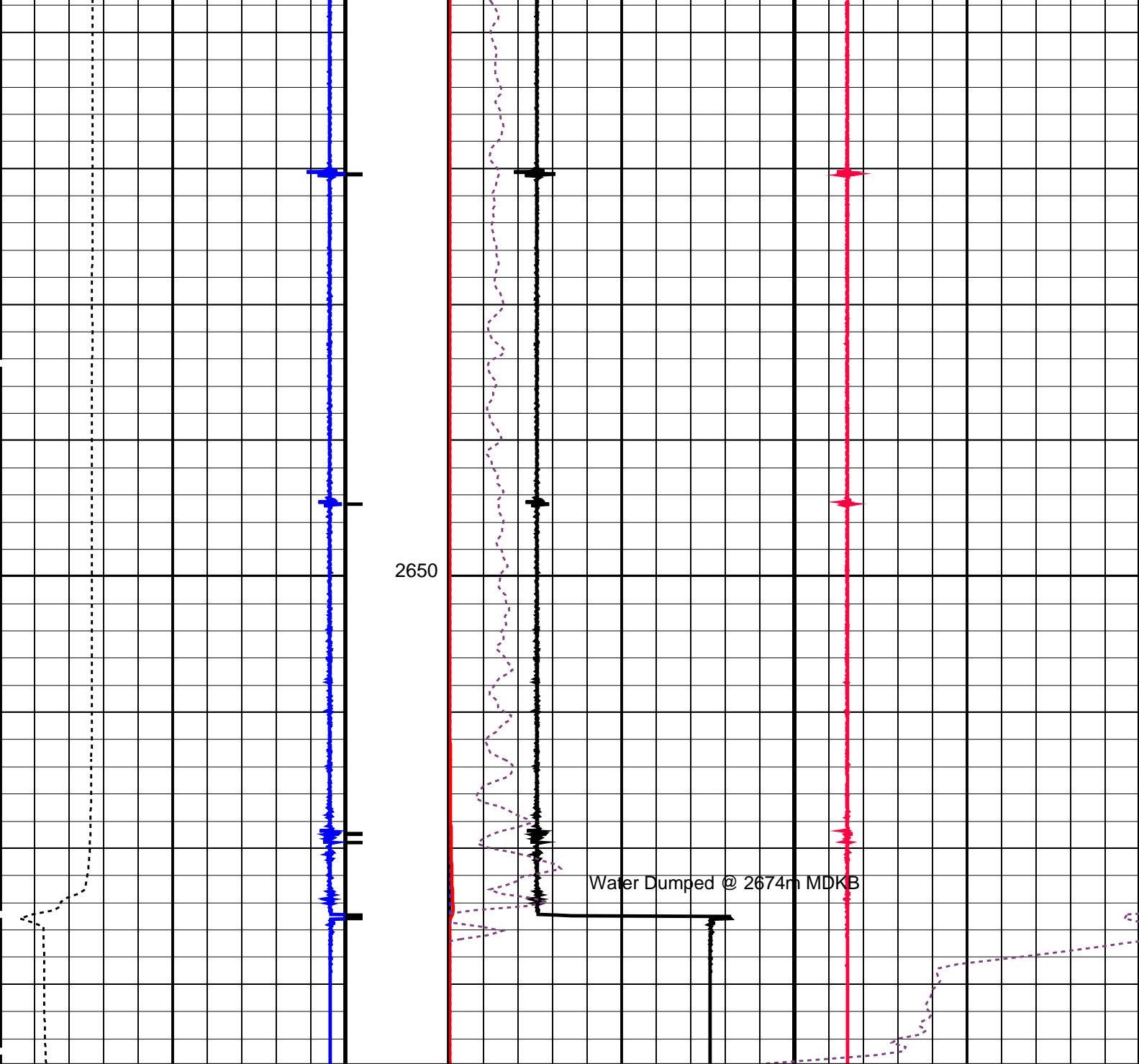
PIP SUMMARY

Time Mark Every 60 S

Casing Collars

Parameters		
DLIS Name	Description	Value





PIP SUMMARY

Time Mark Every 60 S

Casing Collars

Parameters		
DLIS Name	Description	Value
CCL	Casing Collar Locator	

CCLD
CCLT

CCL-L: Casing Collar Locator
CCL reset delay
CCL Detection Level

12 IN
0.3 V


Format: PERFO Vertical Scale: 1:200 Graphics File Created: 09-Sep-2008 15:08

OP System Version: 15C0-309
MCM

SHM_GUN SRPC-3546-Q1_2008_OP15 CCL-L SRPC-3546-Q1_2008_OP15

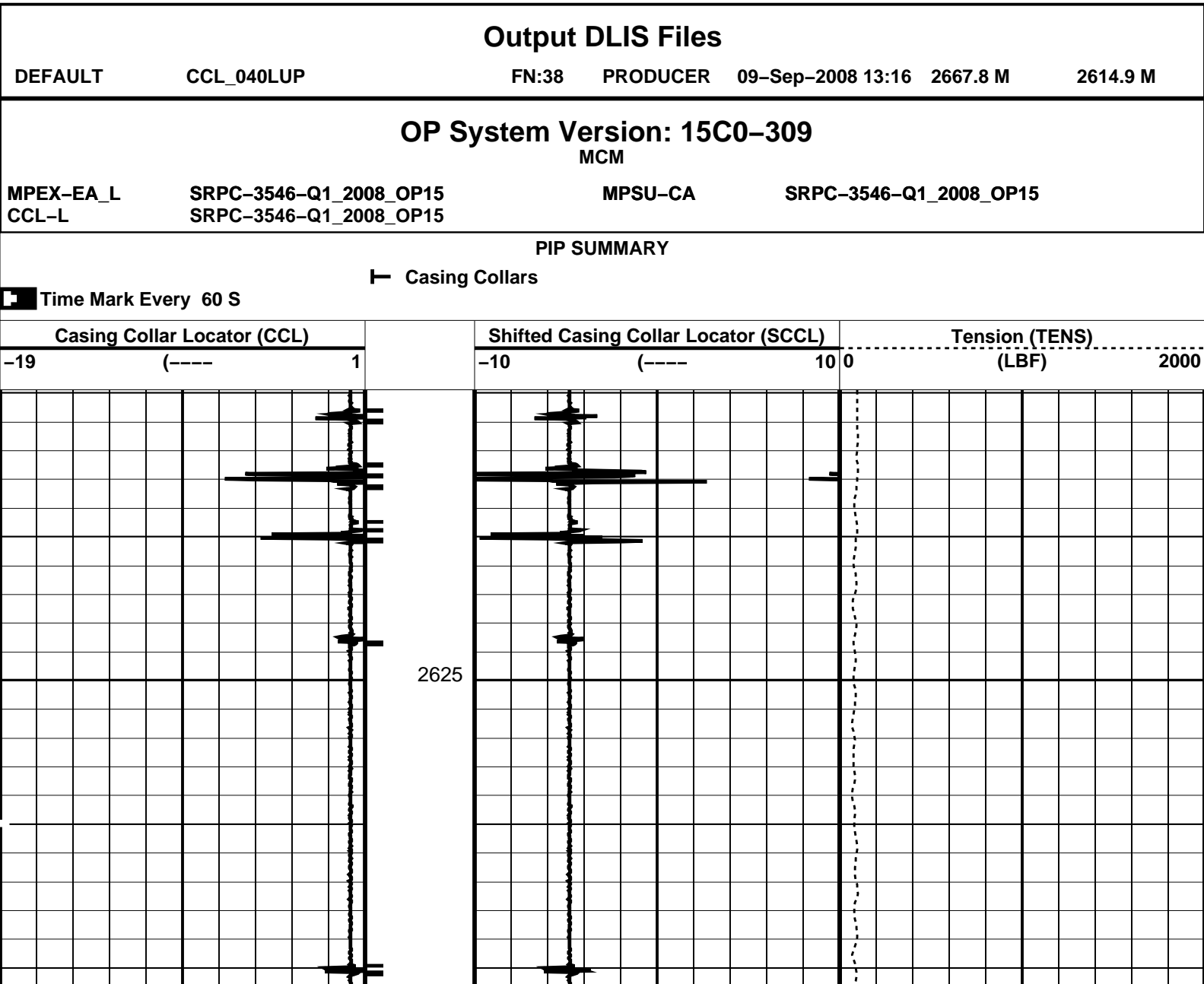
Output DLIS Files

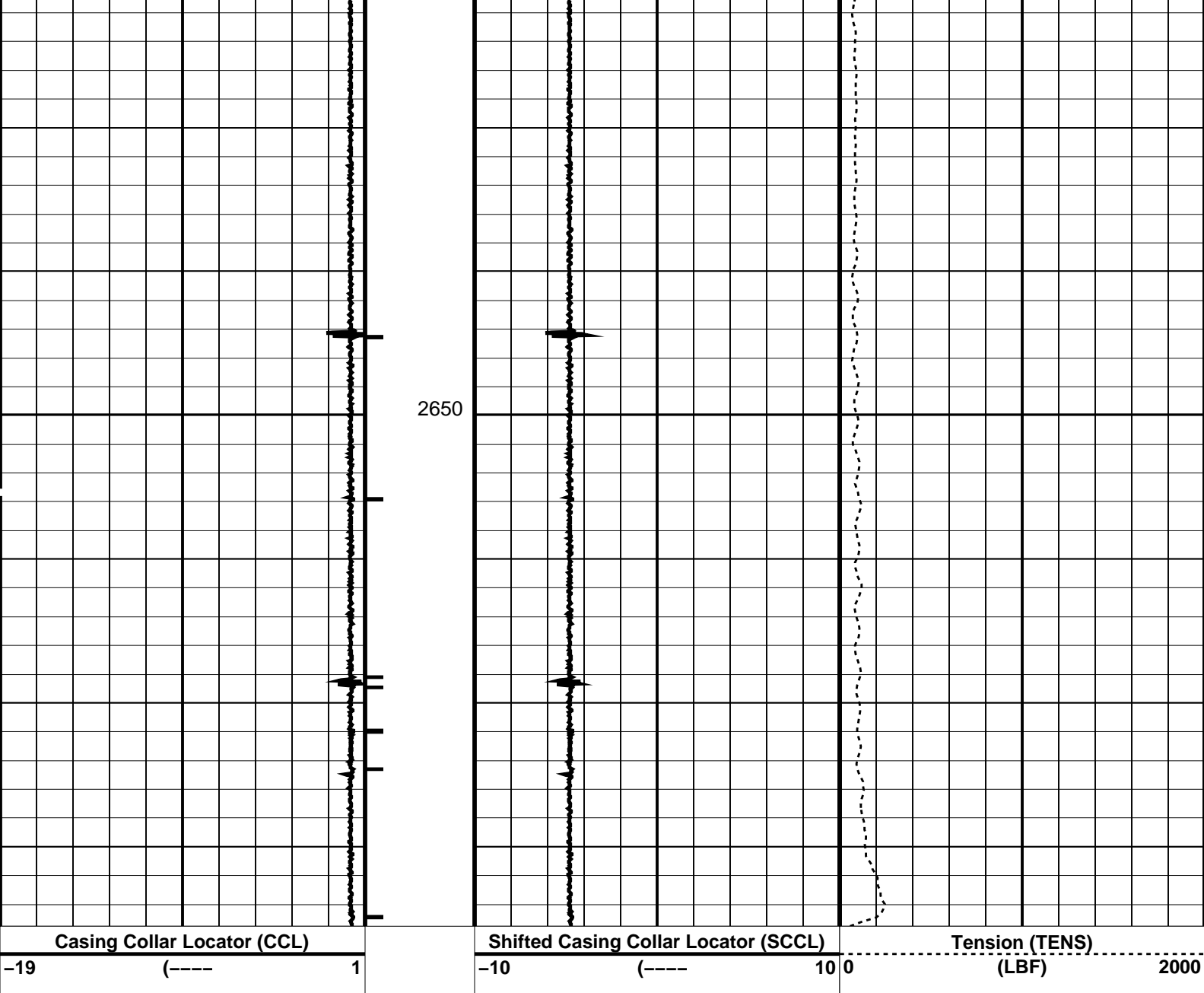
DEFAULT PERFO_043LUP FN:41 PRODUCER 09-Sep-2008 15:08



Log Away After Setting

MAXIS Field Log





PIP SUMMARY

└─ Casing Collars

Time Mark Every 60 S

Parameters

DLIS Name	Description	Value
CCLD	CCL-L: Casing Collar Locator	
CCLT	CCL reset delay	12 IN
	CCL Detection Level	0.3 V

Format: PERFO Vertical Scale: 1:200 Graphics File Created: 09-Sep-2008 13:16

OP System Version: 15C0-309

MCM

MPEX-EA_L	SRPC-3546-Q1_2008_OP15	MPSU-CA	SRPC-3546-Q1_2008_OP15
CCL-L	SRPC-3546-Q1_2008_OP15		

Output DLIS Files

DEFAULT	CCL_040LUP	FN:38	PRODUCER	09-Sep-2008 13:16
---------	------------	-------	----------	-------------------

7 5/8" Mphd Plug Setting

MAXIS Field Log

Output DLIS Files

DEFAULT

CCL_039LUP

FN:37

PRODUCER

09-Sep-2008 12:37

OP System Version: 15C0-309

MCM

MPEX-EA_L
CCL-LSRPC-3546-Q1_2008_OP15
SRPC-3546-Q1_2008_OP15

MPSU-CA

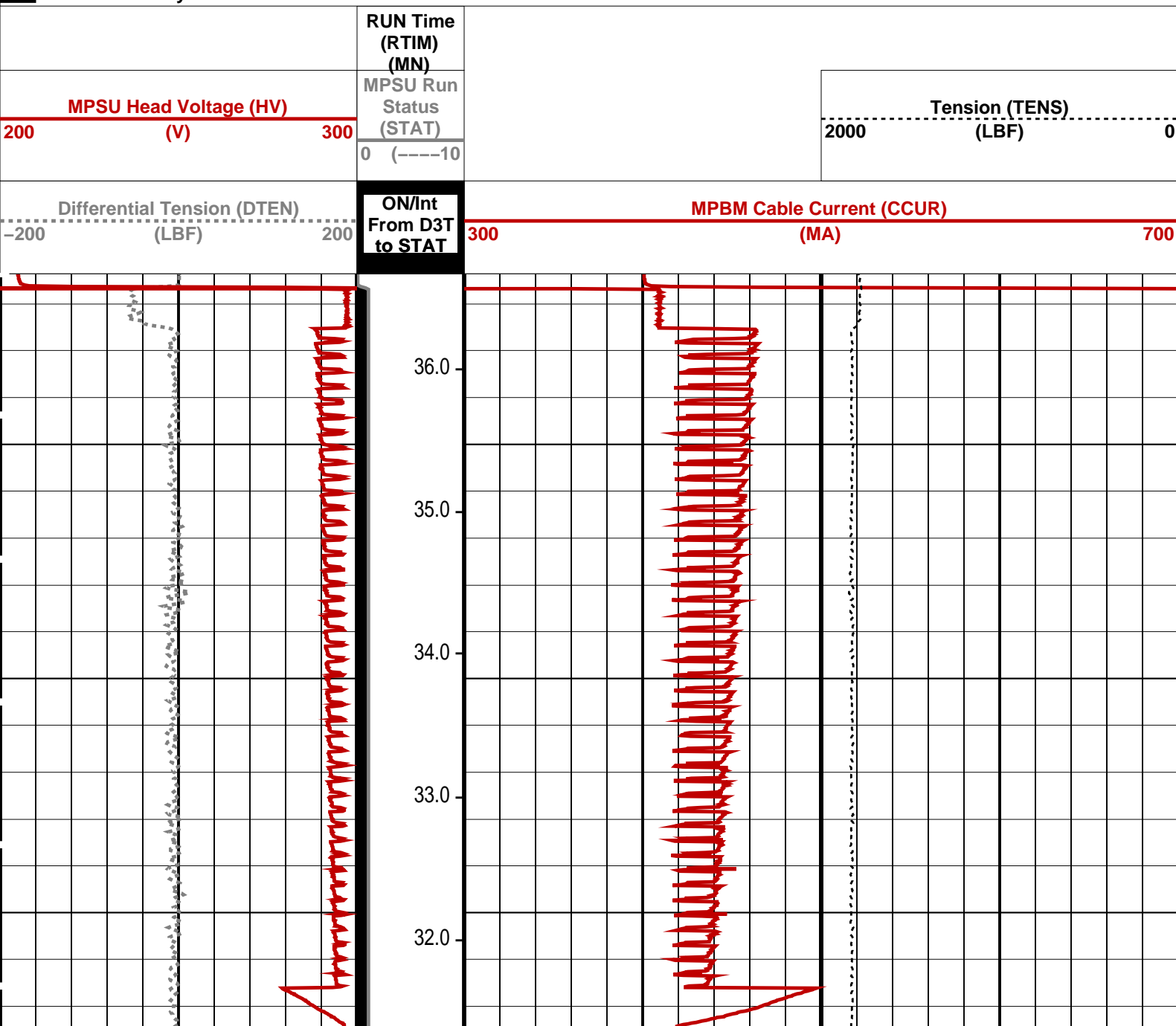
SRPC-3546-Q1_2008_OP15

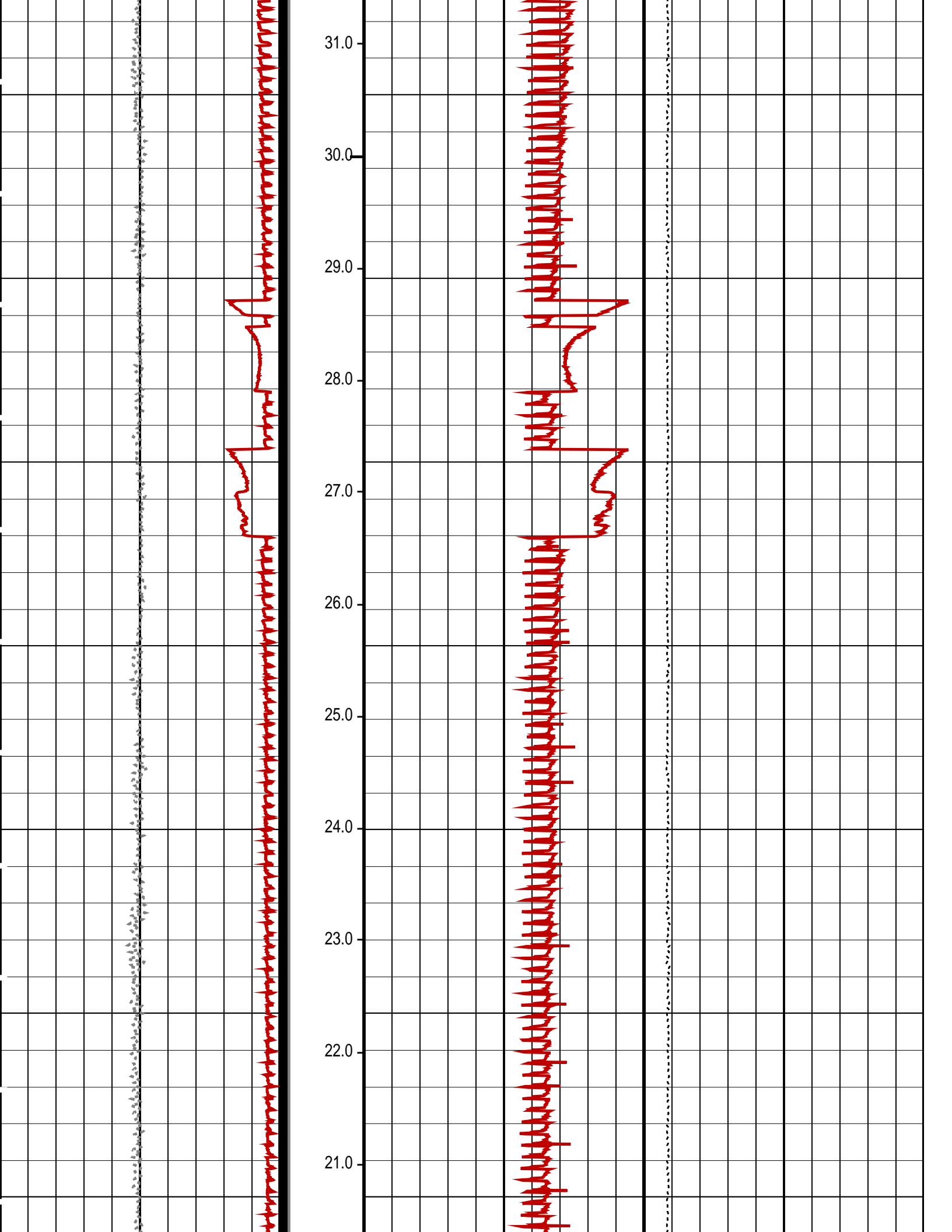
PIP SUMMARY

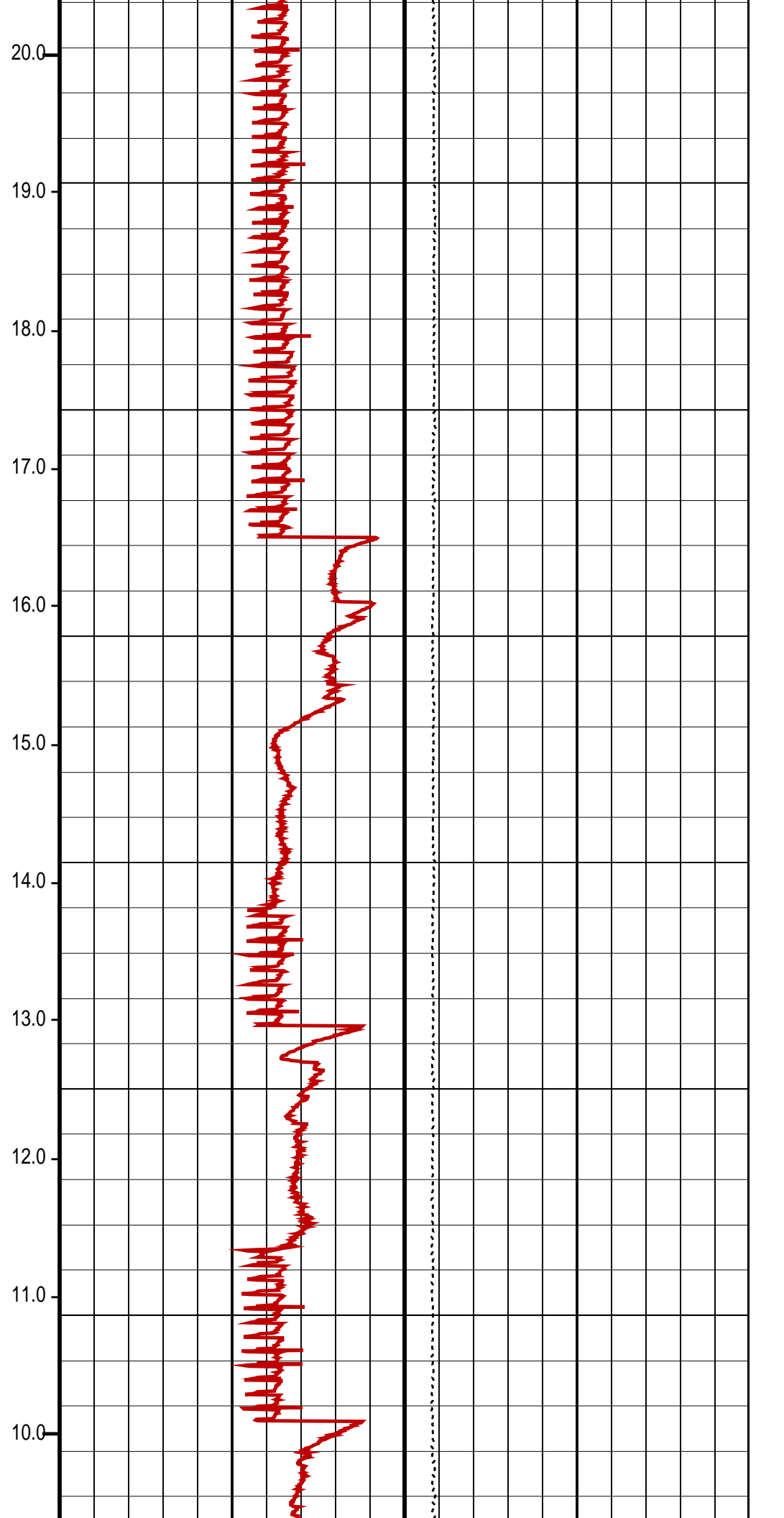
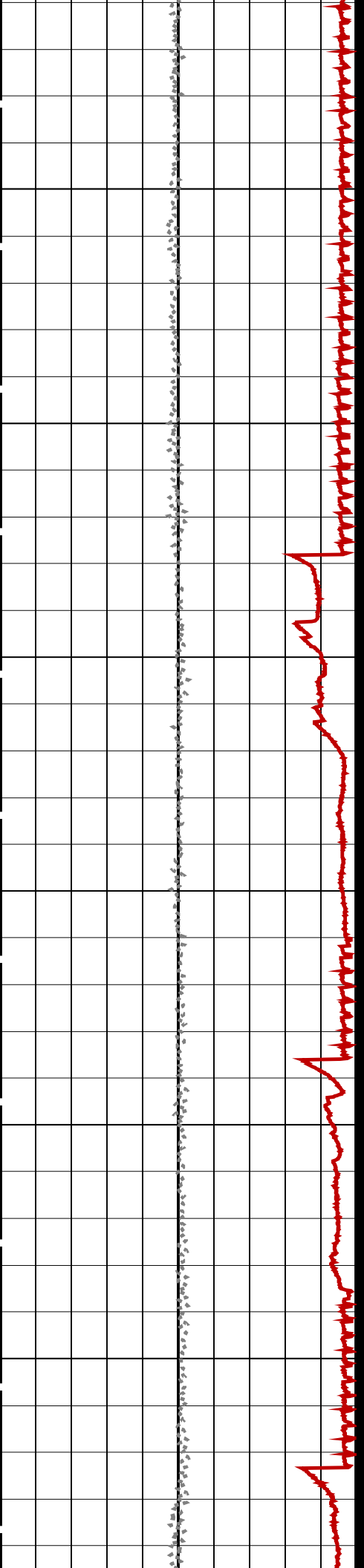
└ MPSU Run Time Every 1 MN

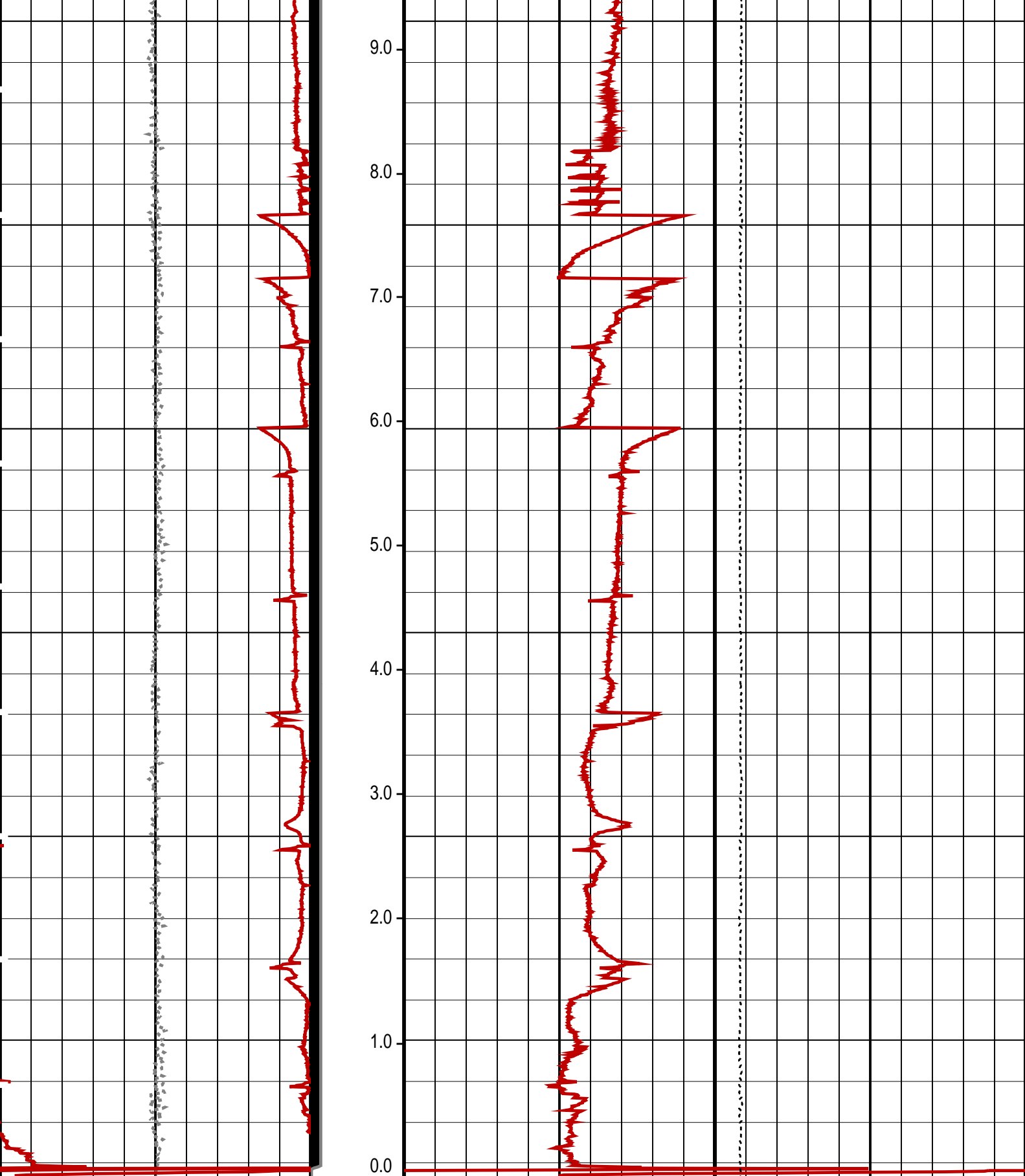
└ MPSU Run Time Every 10 MN

Time Mark Every 60 S









<div>Differential Tension (DTEN) (LBF)</div> <div>-200200</div>	<div>ON/Int From D3T to STAT</div>	<div>MPBM Cable Current (CCUR) (MA)</div> <div>300700</div>	
<div>MPSU Head Voltage (HV) (V)</div> <div>200300</div>	<div>MPSU Run Status (STAT)</div> <div>0 (----10</div>		<div>Tension (TENS) (LBF)</div> <div>20000</div>

PIP SUMMARY

- MPSU Run Time Every 1 MN
- MPSU Run Time Every 10 MN

Time Mark Every 60 S

Parameters

DLIS Name	Description	Value
-----------	-------------	-------

MPSU-CA: MECHANICAL PLUGBACK SETTING UNIT
IPUMP Intensifier Pump

TRUE

Format: MPBT Vertical Scale: 1:600 Graphics File Created: 09-Sep-2008 12:37

OP System Version: 15C0-309

MCM

MPEX-EA_L	SRPC-3546-Q1_2008_OP15	MPSU-CA	SRPC-3546-Q1_2008_OP15
CCL-L	SRPC-3546-Q1_2008_OP15		

Output DLIS Files

DEFAULT	CCL_039LUP	FN:37	PRODUCER	09-Sep-2008 12:37
---------	------------	-------	----------	-------------------

Schlumberger

7 5/8" Mpbt Plug Correlation

MAXIS Field Log

Output DLIS Files

DEFAULT	CCL_038LUP	FN:36	PRODUCER	09-Sep-2008 12:28
---------	------------	-------	----------	-------------------

OP System Version: 15C0-309

MCM

MPEX-EA_L	SRPC-3546-Q1_2008_OP15	MPSU-CA	SRPC-3546-Q1_2008_OP15
CCL-L	SRPC-3546-Q1_2008_OP15		

PIP SUMMARY

└─ Casing Collars

Time Mark Every 60 S

Casing Collar Locator (CCL)

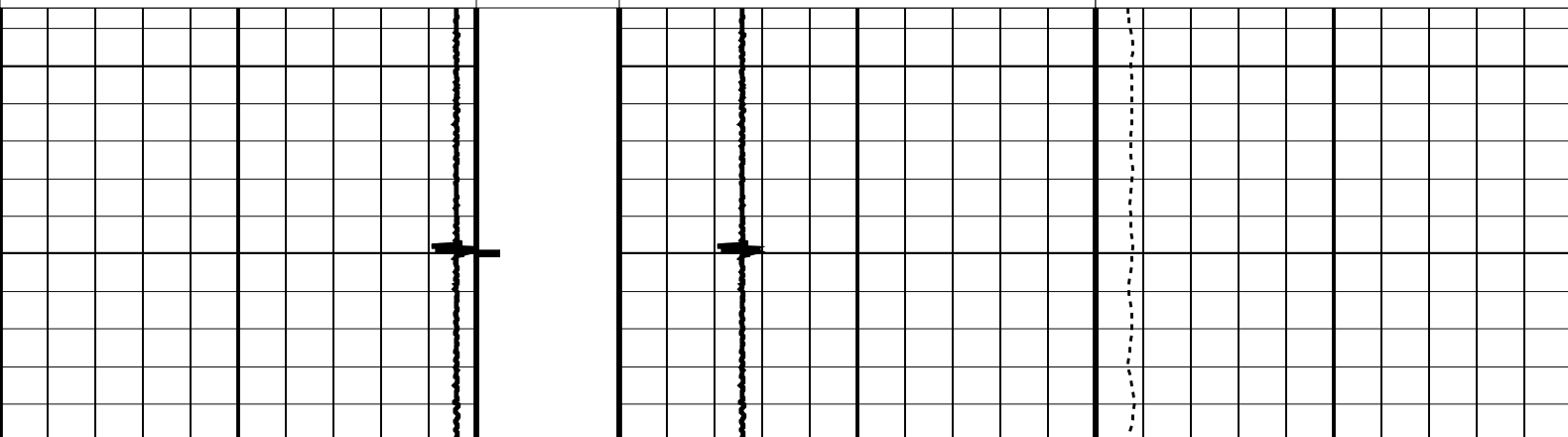
-19 (----- 1

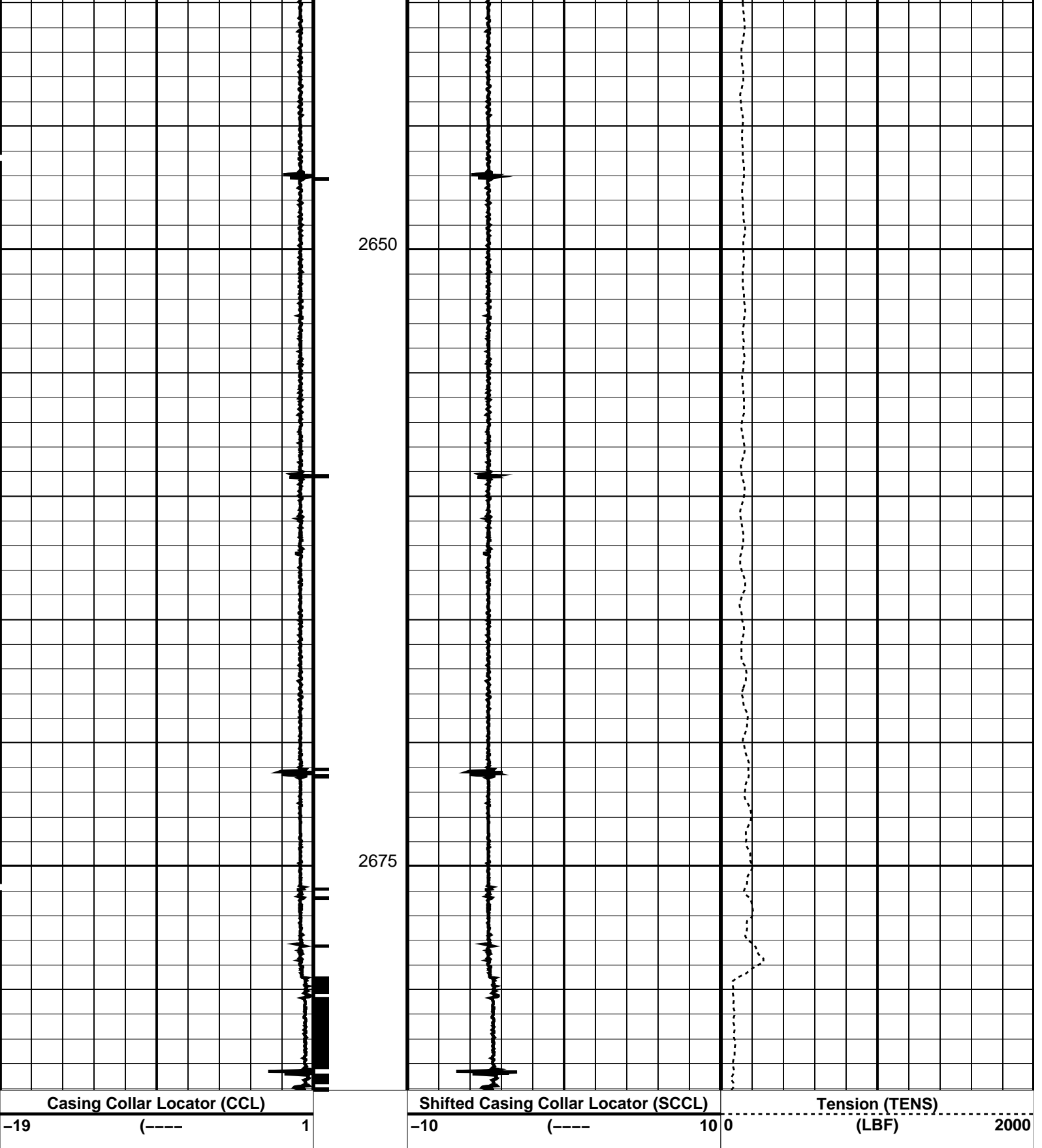
Shifted Casing Collar Locator (SCCL)

-10 (---- **10** **0**

Tension (TENS)

(LBF) 2000





PIP SUMMARY

Time Mark Every 60 S

— Casing Collars

Parameters		
DLIS Name	Description	Value
CCL-L: Casing Collar Locator		
CCLD	CCL reset delay	12 IN
CCLT	CCL Detection Level	0.3 V

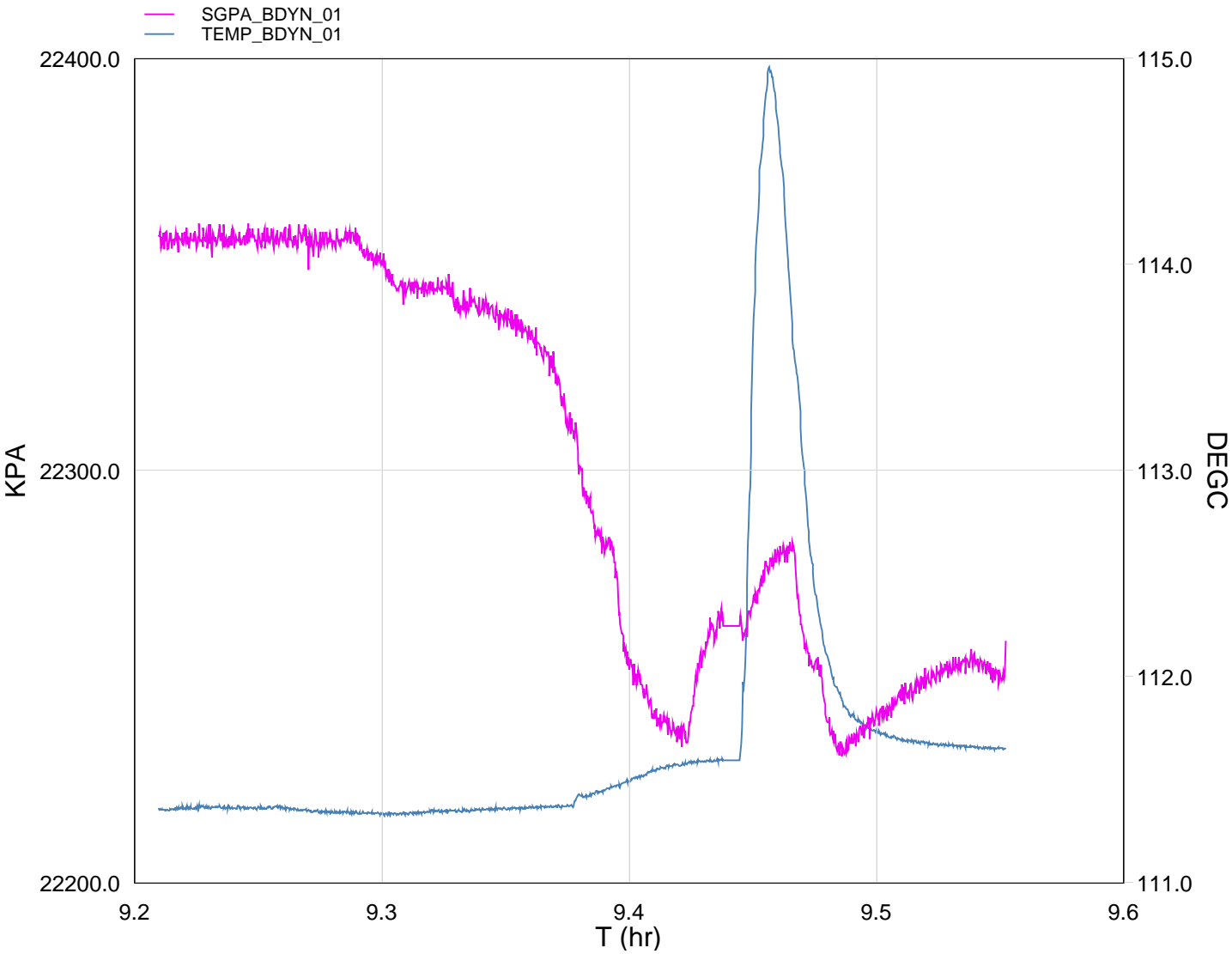
OP System Version: 15C0-309			
MCM			
MPEX-EA_L	SRPC-3546-Q1_2008_OP15	MPSU-CA	SRPC-3546-Q1_2008_OP15
CCL-L	SRPC-3546-Q1_2008_OP15		
Output DLIS Files			
DEFAULT	CCL_038LUP	FN:36	PRODUCER 09-Sep-2008 12:28



GUN # 1

2661m to 2662.5m MDKB

MAXIS Field Log



4860.0	232.98	3227.490
4800.0	233.00	3227.635
4740.0	233.05	3226.459
4680.0	233.17	3225.218
4620.0	233.91	3226.417
4560.0	238.06	3231.407
4500.0	232.97	3229.160
4440.0	232.85	3227.511
4380.0	232.80	3225.652
4320.0	232.65	3230.551
4260.0	232.52	3236.244
4200.0	232.46	3239.030
4140.0	232.45	3239.671
4080.0	232.44	3240.374
4020.0	232.42	3240.817
3960.0	232.41	3241.841
3900.0	232.42	3242.632
3840.0	232.45	3242.445
3780.0	232.46	3242.581
3720.0	232.45	3242.366
3660.0	232.44	3242.712

Schlumberger

Shooting Pass

MAXIS Field Log

Company: Esso Australia Pty Ltd.

Well: A-8

Output DLIS Files

DEFAULT

PERFO_030LUP

FN:28

PRODUCER

09-Sep-2008 09:07

2677.4 M

2611.5 M

OP System Version: 15C0-309

MCM

MWP_GUN

SRPC-3546-Q1_2008_OP15

MWPT-CA

SRPC-3546-Q1_2008_OP15

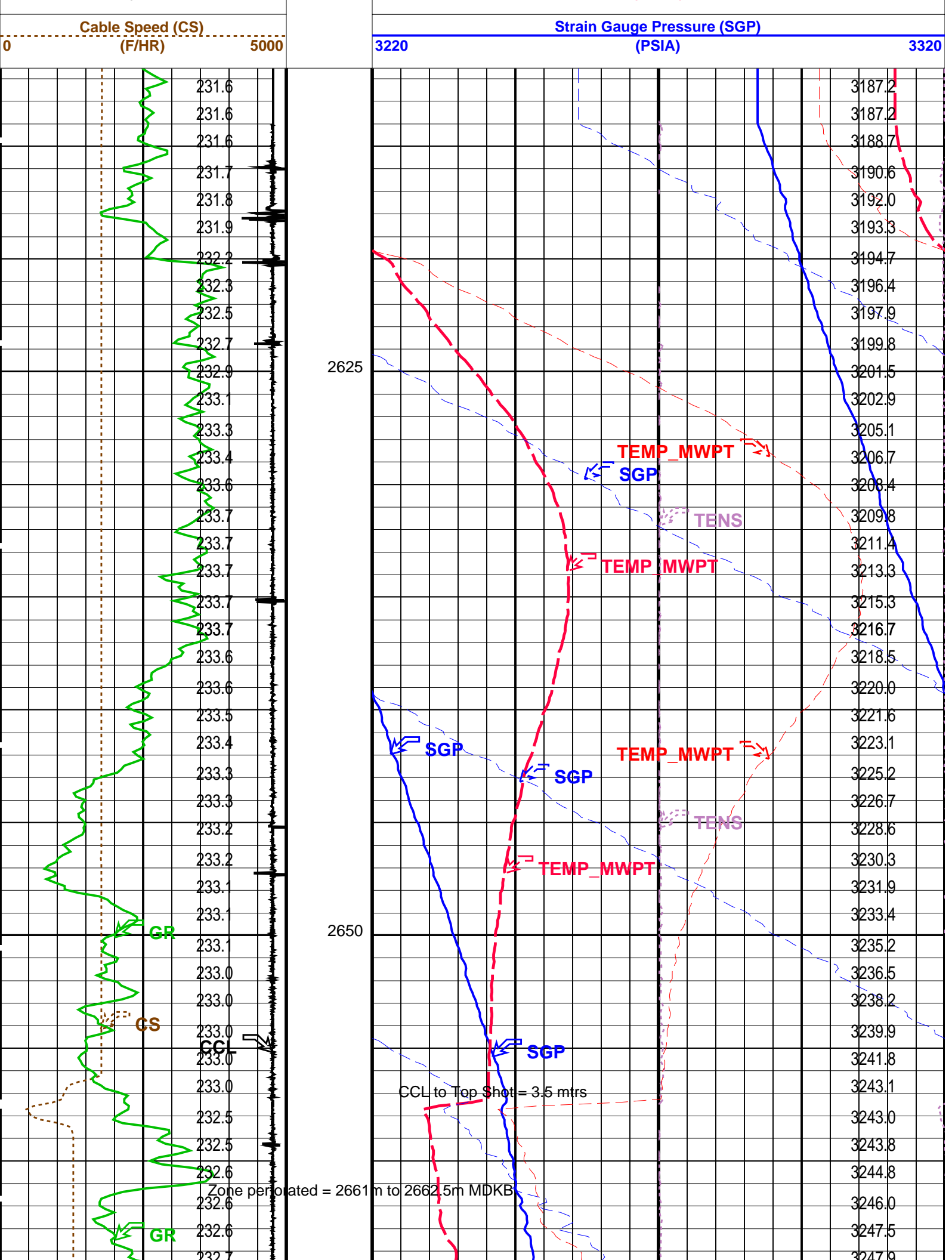
MWGT-AA

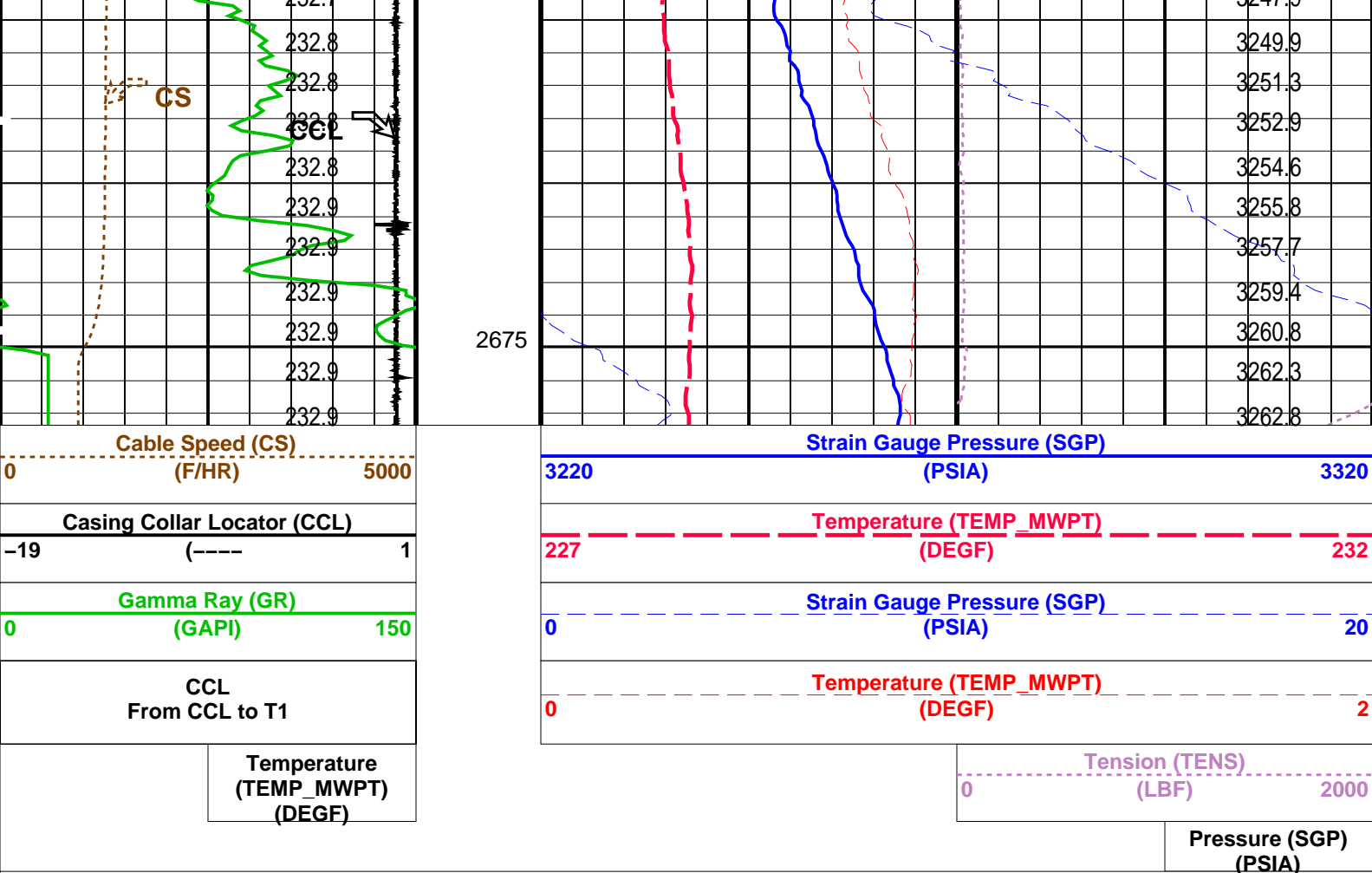
SRPC-3546-Q1_2008_OP15

PIP SUMMARY

☒ Time Mark Every 60 S

		Pressure (SGP) (PSIA)	
		Tension (TENS) (LBF)	
		0	2000
Temperature (TEMP_MWPT) (DEGF)		Temperature (TEMP_MWPT) (DEGF)	
CCL From CCL to T1		0	2
Gamma Ray (GR) (GAPI)		Strain Gauge Pressure (SGP) (PSIA)	
0	150	0	20
Casing Collar Locator (CCL)		Temperature (TEMP_MWPT) (DEGF)	
-19	(----	227	232





Time Mark Every 60 S

Parameters

DLIS Name	Description	Value
MWPT-CA: MEASUREMENT WHILE PERFORATING TOOL		
DEVI_FL_CORR	Deviation Angle for Flow Line Correction	0 DEG
FLD	Flow Line Density	1 G/C3
MWPT_NULL_SOURCE	MWPT NULL Temperature Source	TEMS
MWPT_NULL_TEMP	MWPT NULL Temperature	0.0 DEGC

Format: MWP Vertical Scale: 1:200 Graphics File Created: 09-Sep-2008 09:07

OP System Version: 15C0-309

MCM

MWP_GUN SRPC-3546-Q1_2008_OP15 MWPT-CA SRPC-3546-Q1_2008_OP15
MWGT-AA SRPC-3546-Q1_2008_OP15

Output DLIS Files

DEFAULT PERFO_030LUP FN:28 PRODUCER 09-Sep-2008 09:07

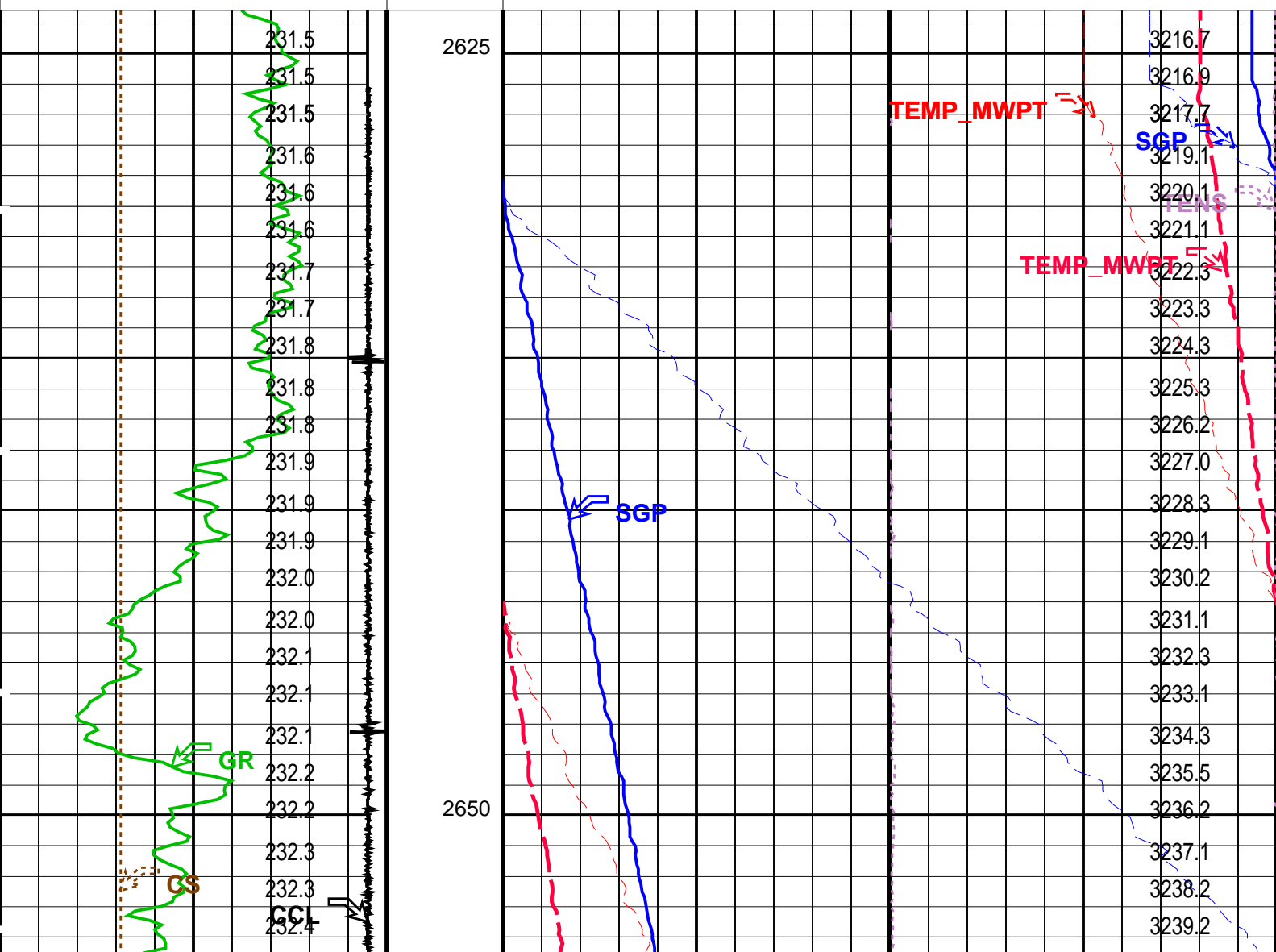
Schlumberger

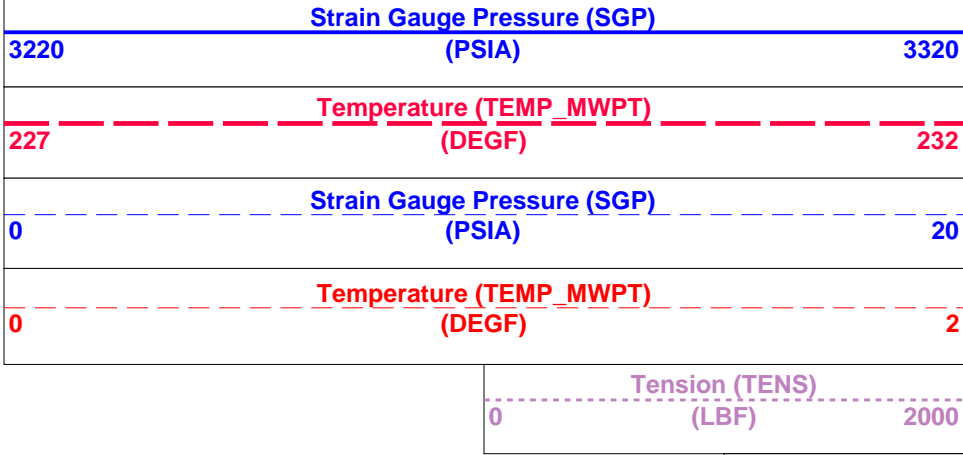
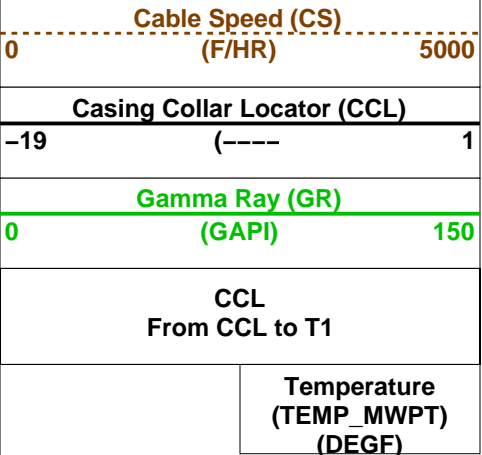
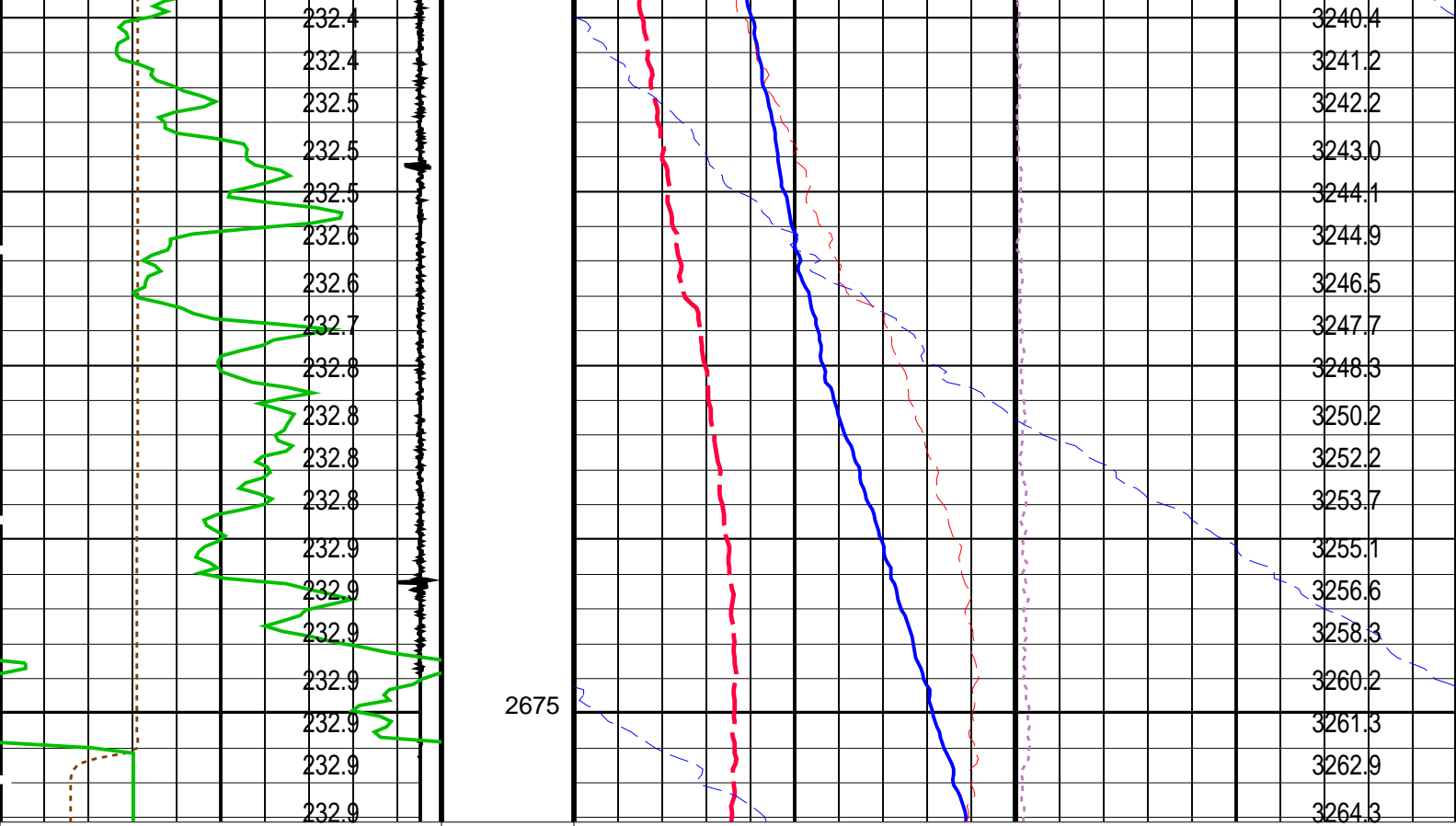
Correlation Pass

DEFAULT	PERFO 029LUP	FN:27	PRODUCER	09-Sep-2008 08:56	2678.1 M	2623.6 M
---------	--------------	-------	----------	-------------------	----------	----------

MCM

PIP SUMMARY

[illegible]



PIP SUMMARY

Time Mark Every 60 S

Parameters

DLIS Name	Description	Value
MWPT-CA: MEASUREMENT WHILE PERFORATING TOOL		
DEVI_FL_CORR	Deviation Angle for Flow Line Correction	0 DEG
FLD	Flow Line Density	1 G/C3
MWPT_NULL_SOURCE	MWPT NULL Temperature Source	TEMS
MWPT_NULL_TEMP	MWPT NULL Temperature	0.0 DEGC

Format: MWP Vertical Scale: 1:200 Graphics File Created: 09-Sep-2008 08:56

OP System Version: 15C0-309

MCM

MWP_GUN	SRPC-3546-Q1_2008_OP15	MWPT-CA	SRPC-3546-Q1_2008_OP15
MWGT-AA	SRPC-3546-Q1_2008_OP15		

Output DLIS Files

DEFAULT	PERFO_029LUP	FN:27	PRODUCER	09-Sep-2008 08:56
---------	--------------	-------	----------	-------------------

Well: **A-8**
Field: **Flounder**
Rig: **Crane / Prod4**
Country: **Australia**

2-1/8" Phased Powerjet MWPT
Perforation Record
7 5/8" Posiset Plug Setting Record