

Company: Esso Australia Pty Ltd.

Well: A-6

Field: Flounder

Rig : Prod4 / Crane

Country: Australia

7" Mpbtp Plug
2 1/8" Cement Dump
Record

Prod4 / Crane
Rig :
Field: Flounder
Location: Gippsland
Well: A-6
Company: Esso Australia Pty Ltd.

LOCATION	
Gippsland	Elev.: K.B. 40.8 m
Basin	G.L. -94 m
Bass Strait	D.F. 40.8 m
Permanent Datum:	M.S.L.
Log Measured From:	D.F.
Drilling Measured From:	D.F.

State: Victoria	Max. Well Deviation 64 deg	Longitude 148 06'15.1"E	Latitude 038 18'45.24"S
-----------------	----------------------------	-------------------------	-------------------------

Logging Date

7-Sep-2008

Run Number

One

Depth Driller

4098.5 m

Schlumberger Depth

4087.5 m

Bottom Log Interval

4087.5 m

Top Log Interval

4010 m

Casing Fluid Type

Production Fluids

Salinity

Density

Fluid Level

1880 m

BIT/CASING/TUBING STRING

Bit Size

8.500 in

From

To

Casing/Tubing Size

7.000 in

Weight

26 lbm/ft

Grade

N-80

From

3786 m

To

4146 m

Maximum Recorded Temperatures

233 degf

Logger On Bottom

Time

7-Sep-2008

7:45

Unit Number

Location

889

Prod4 / Ausl

Recorded By

G Wright.

Witnessed By

D Madden.

Run 1

Oil Density
Water Salinity
Gas Gravity

PVT DATA

Bo
Bw
1/Bq
Bubble Point Pressure
Bubble Point Temperature
Solution GOR
Maximum Deviation

64 deg

CEMENTING DATA

Primary/Squeeze
Casing String No
Lead Cement Type
Volume
Density
Water Loss
Additives

Primary

Tail Cement Type

Volume

Density

Water Loss

Additives

Expected Cement Top

Logging Date

Run Number

Depth Driller

Schlumberger Depth

Bottom Log Interval

Top Log Interval

Casing Fluid Type

Salinity

Density

Fluid Level

BIT/CASING/TUBING STRING

Bit Size

From

To

Casing/Tubing Size

Weight

Grade

From

To

Maximum Recorded Temperatures

Logger On Bottom

Time

Unit Number

Location

Recorded By

Witnessed By

DEPTH SUMMARY LISTING

Date Created: 5-SEP-2008 12:54:08

Depth System Equipment

Depth Measuring Device	Tension Device	Logging Cable
Type: IDW-BE Serial Number: 6373 Calibration Date: 01-Dec-2007 Calibrator Serial Number: 9 Calibration Cable Type: 2-32ZT Wheel Correction 1: -2 Wheel Correction 2: -4	Type: PSDS/OSDS Serial Number: 325357 Calibration Date: 02-Sep-08 Calibrator Serial Number: 1174 Calibration Gain: 0.957 Calibration Offset: -162	Type: 2-32ZT Serial Number: 208196 Length: 6939.99 M Conveyance Method: Wireline Rig Type: Rigless

Depth Control Parameters

Log Sequence:	Subsequent Log In the Well
Reference Log Name:	FLA A6 Petrophysical Analysis.
Reference Log Run Number:	1
Reference Log Date:	01-Sep-2007

Depth Control Remarks

1. IDW-BE 6373 used as primary depth control.
2. Z-Chart used as back-up.

DISCLAIMER











THE USE OF AND RELIANCE UPON THIS RECORDED-DATA BY THE HEREIN NAMED COMPANY (AND ANY OF ITS AFFILIATES, PARTNERS, REPRESENTATIVES, AGENTS, CONSULTANTS AND EMPLOYEES) IS SUBJECT TO THE TERMS AND CONDITIONS AGREED UPON BETWEEN SCHLUMBERGER AND THE COMPANY, INCLUDING: (a) RESTRICTIONS ON USE OF THE RECORDED-DATA; (b) DISCLAIMERS AND WAIVERS OF WARRANTIES AND REPRESENTATIONS REGARDING COMPANY'S USE OF AND RELIANCE UPON THE RECORDED-DATA; AND (c) CUSTOMER'S FULL AND SOLE RESPONSIBILITY FOR ANY INFERENCE DRAWN OR DECISION MADE IN CONNECTION WITH THE USE OF THIS RECORDED-DATA.

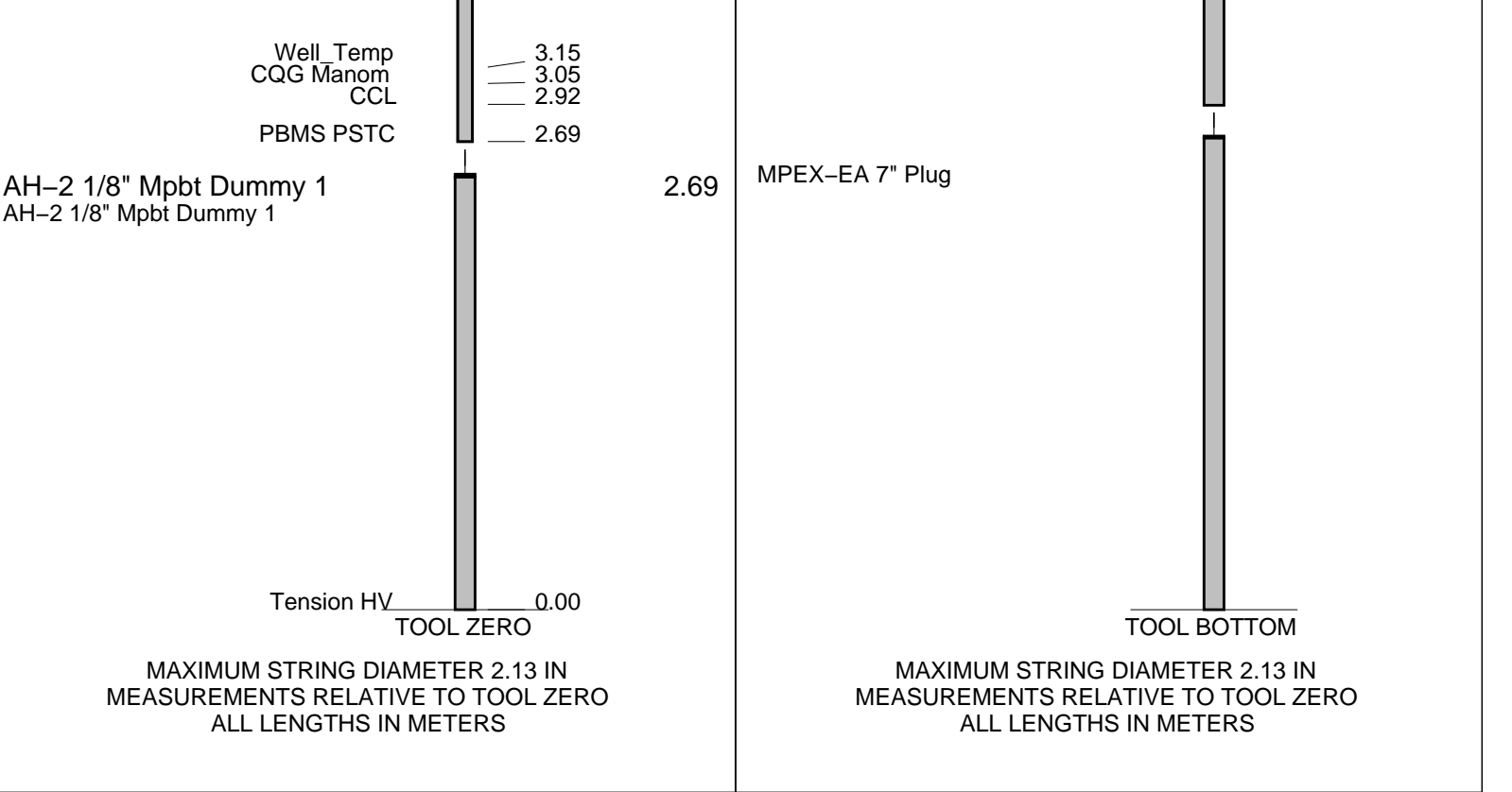
OTHER SERVICES1
OS1: PLT-Spinner
OS2: Survey
OS3:
OS4:
OS5:
REMARKS: RUN NUMBER 1
Log correlated to FLA A-6 composite supplied with logging program.
Maximum well deviation = 64degree's at 750m MDKB.
Run one was the 2 1/8" dummy plug pass.
Run two, 7"26lb MPBT plug set at 4087.5m MDKB.
Runs 3 & 4 water and cement dumped on top of the plug.

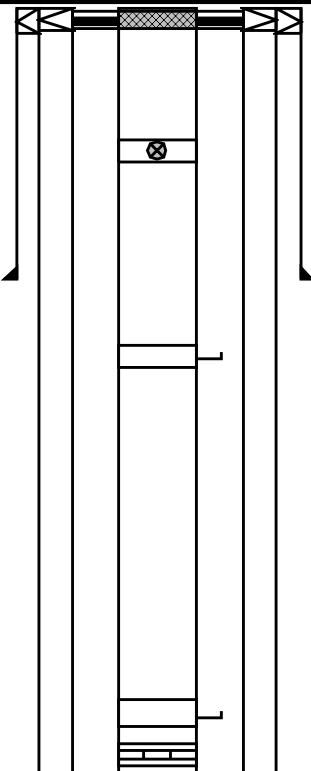
Crew : John Light & Jake Annear.

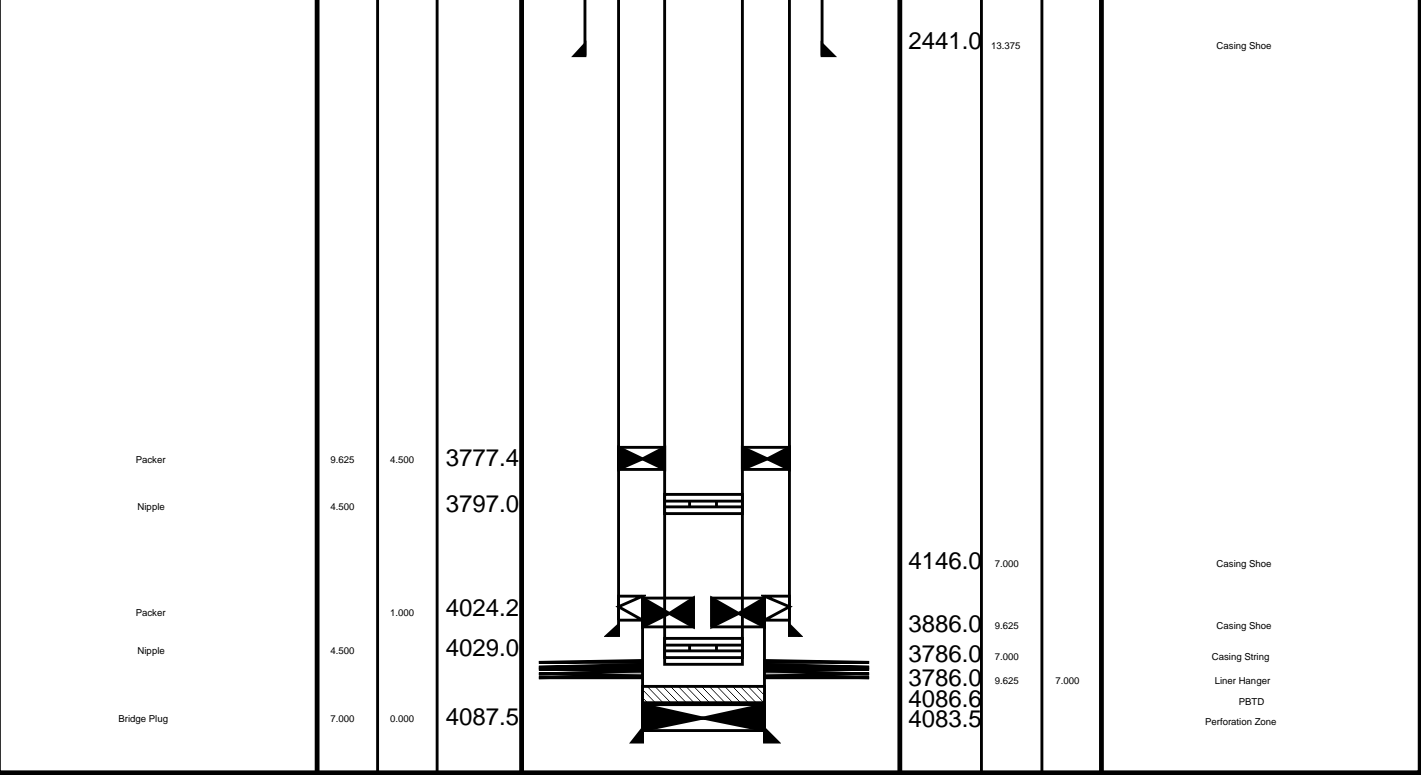
RUN 1			RUN 2		
SERVICE ORDER #:					
PROGRAM VERSION:					
FLUID LEVEL:					
LOGGED INTERVAL	START	STOP	LOGGED INTERVAL	START	STOP

EQUIPMENT DESCRIPTION

RUN 1			RUN 2		
SURFACE EQUIPMENT			SURFACE EQUIPMENT		
WITM-A 1 PSC_16MHZ 806			MPBM		
DOWNHOLE EQUIPMENT			DOWNHOLE EQUIPMENT		
AH-SWBS-B 789 AH-SWBS-B 789		8.97	SWHS-A 759		10.47
AH-SWBS-B 788 AH-SWBS-B 788		8.29	CCL-L 9851		TOOL ZERO
AH-SWBS-B 787 AH-SWBS-B 787		7.60	MPSU-CA 1102		9.54
AH-SWBS-B 786 AH-SWBS-B 786		6.91			
AH-SWBS-B 785 AH-SWBS-B 785		6.23			
MH-SWHS-A 759 MH-SWHS-A 759		5.54			
PSPT-A/B 827 PSC-A 806 PSPT-B 827 PSTC 806 PBMS-B 827 CQG_F_Mano 827 RTD Thermometer 827 GR 827 CCL 827 PBMS 827		5.21			
	GR	4.08			



Production String	(in)		(m)	Well Schematic	(m)	(in)		Casing String
	OD	ID	MD		MD	OD	ID	
Tubing	4.500		12.8		16.0	18.909		Casing String
Tubing Hanger	9.625	4.500	11.0		16.0	18.909	18.825	Liner Hanger
Shut-in Valve	4.500		457.0					
Gas Lift Mandrel	4.500		969.0		687.0	16.000		Casing Shoe
Gas Lift Mandrel	4.500		1874.3					
Nipple	4.500		1890.0					



Job Event Summary

MAXIS Field Log

Schlumberger Job Event Summary

Time	Elapsed Time	Depth (M)	File
Simulated Log	7-Sep-2008 12:50	000:17	PERFO_063LUP
Log Pass (down)	7-Sep-2008 13:22	000:46	-1.5 - 4084.6 PERFO_064LDP
Log Pass (up)	7-Sep-2008 14:08	000:06	4084.8 - 4006.8 PERFO_065LUP
Log Pass (up)	7-Sep-2008 14:38	000:24	1817.4 - -11.6 PERFO_067LUP
Log Pass (down)	7-Sep-2008 15:30	000:52	23.0 - 4107.8 PERFO_069LDP
Log Pass (up)	7-Sep-2008 16:22	000:05	4107.8 - 4027.2 PERFO_070LUP
Log Pass (up)	7-Sep-2008 16:30	000:06	4080.2 - 4003.7 PERFO_071LUP



Cement Dump

MAXIS Field Log

Output DLIS Files

DEFAULT PERFO_071LUP FN:63 PRODUCER 07-Sep-2008 16:30 4080.2 M 4003.7 M

OP System Version: 15C0-309
MCM

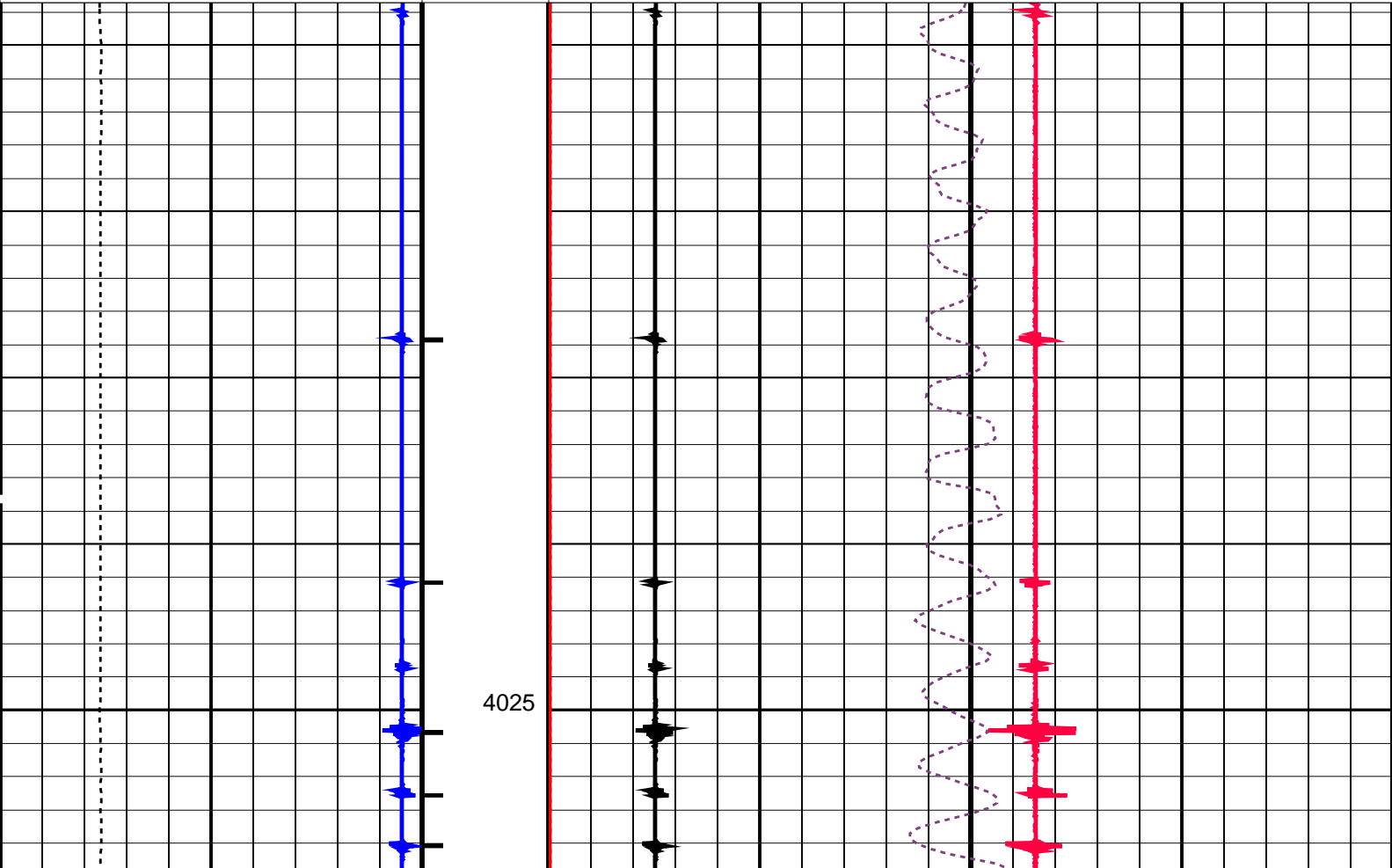
SHM_GUN SRPC-3546-Q1_2008_OP15 CCL-L SRPC-3546-Q1_2008_OP15

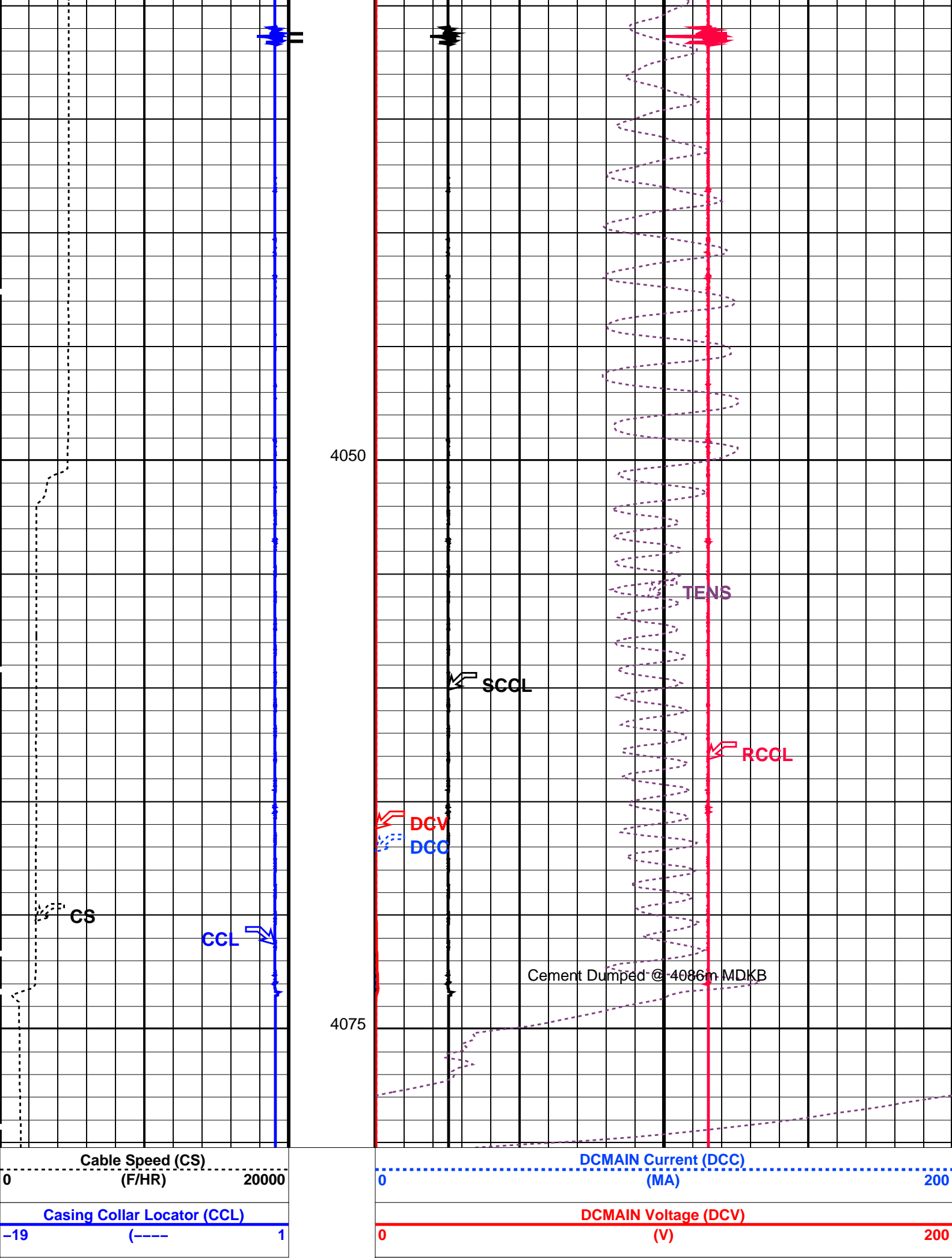
PIP SUMMARY

└─ Casing Collars

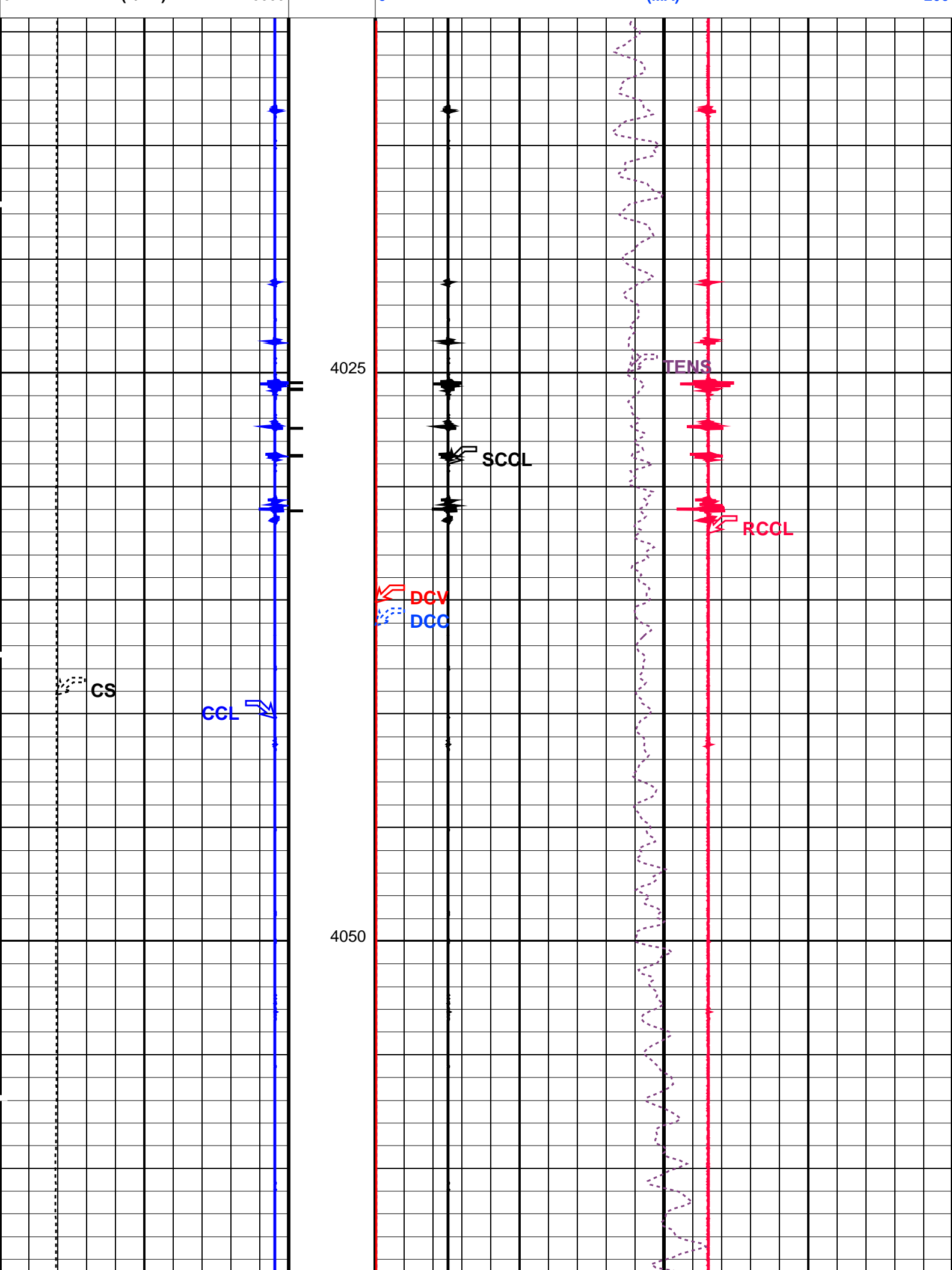
Time Mark Every 60 S

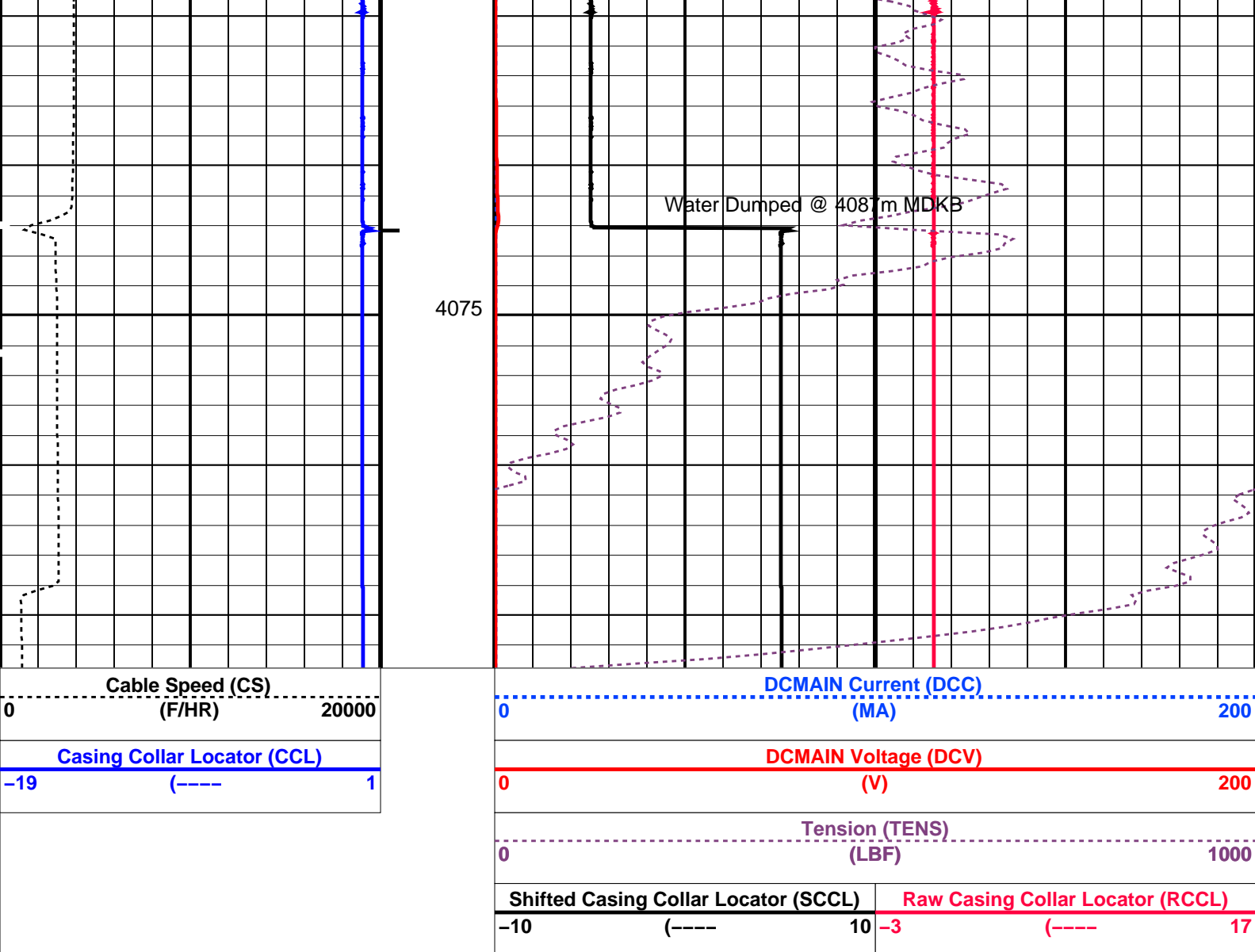
		Shifted Casing Collar Locator (SCCL)		Raw Casing Collar Locator (RCCL)		
		-10	(----	10	-3 (----	17
		Tension (TENS)				
		0		(LBF)		1000
Casing Collar Locator (CCL)		DCMAIN Voltage (DCV)				
-19 (----		1		0 (V)		200
Cable Speed (CS)		DCMAIN Current (DCC)				
0 (F/HR)		20000		0 (MA)		200





			Tension (TENS) (LBF)		1000
			Shifted Casing Collar Locator (SCCL)		Raw Casing Collar Locator (RCCL)
			-10	(----	10
			-3	(----	17
PIP SUMMARY					
<div><div></div><div>Casing Collars</div></div>					
Time Mark Every 60 S					
Parameters					
DLIS Name		Description		Value	
CCLD		CCL-L: Casing Collar Locator		12 IN	
CCLT		CCL reset delay		0.3 V	
		CCL Detection Level			
Format: PERFO		Vertical Scale: 1:200		Graphics File Created: 07-Sep-2008 16:30	
OP System Version: 15C0-309					
MCM					
SHM_GUN	SRPC-3546-Q1_2008_OP15		CCL-L	SRPC-3546-Q1_2008_OP15	
Output DLIS Files					
DEFAULT	PERFO_071LUP		FN:63	PRODUCER	07-Sep-2008 16:30
<div><div><div>Schlumberger</div><div>Water Dump</div><div>MAXIS Field Log</div></div></div>					
Input DLIS Files					
DEFAULT	PERFO_065LUP		FN:57	PRODUCER	07-Sep-2008 14:08 4084.8 M 4006.8 M
Output DLIS Files					
DEFAULT	PERFO_066PUP		FN:58	PRODUCER	07-Sep-2008 14:14 4086.8 M 4009.3 M
OP System Version: 15C0-309					
MCM					
SHM_GUN	SRPC-3546-Q1_2008_OP15		CCL-L	SRPC-3546-Q1_2008_OP15	
PIP SUMMARY					
<div><div></div><div>Casing Collars</div></div>					
Time Mark Every 60 S					
			Shifted Casing Collar Locator (SCCL)		Raw Casing Collar Locator (RCCL)
			-10	(----	10
			-3	(----	17
			Tension (TENS) (LBF)		1000
			DCMAIN Voltage (DCV)		200
			DCMAIN Current (DCC)		200
Casing Collar Locator (CCL)					
-19			(----		1
Cable Speed (CS)					
0			(F/HR)		20000





PIP SUMMARY

Time Mark Every 60 S

Casing Collars

Parameters			
DLIS Name	Description	Value	
CCLD	CCL-L: Casing Collar Locator	12	IN
CCLT	CCL reset delay	0.3	V
	CCL Detection Level		
DO	System and Miscellaneous	2.0	M
PP	Depth Offset for Playback		
	Playback Processing	NORMAL	

Format: PERFO Vertical Scale: 1:200 Graphics File Created: 07-Sep-2008 14:14

OP System Version: 15C0-309			
MCM			
SHM_GUN	SRPC-3546-Q1_2008_OP15	CCL-L	SRPC-3546-Q1_2008_OP15

Input DLIS Files					
DEFAULT	PERFO_065LUP	FN:57	PRODUCER	07-Sep-2008 14:08	4084.8 M 4006.8 M
Output DLIS Files					
DEFAULT	PERFO_066PUP	FN:58	PRODUCER	07-Sep-2008 14:14	

Input DLIS Files

DEFAULT CCL_050LUP FN:44 PRODUCER 07-Sep-2008 10:56 4079.1 M 4007.7 M

Output DLIS Files

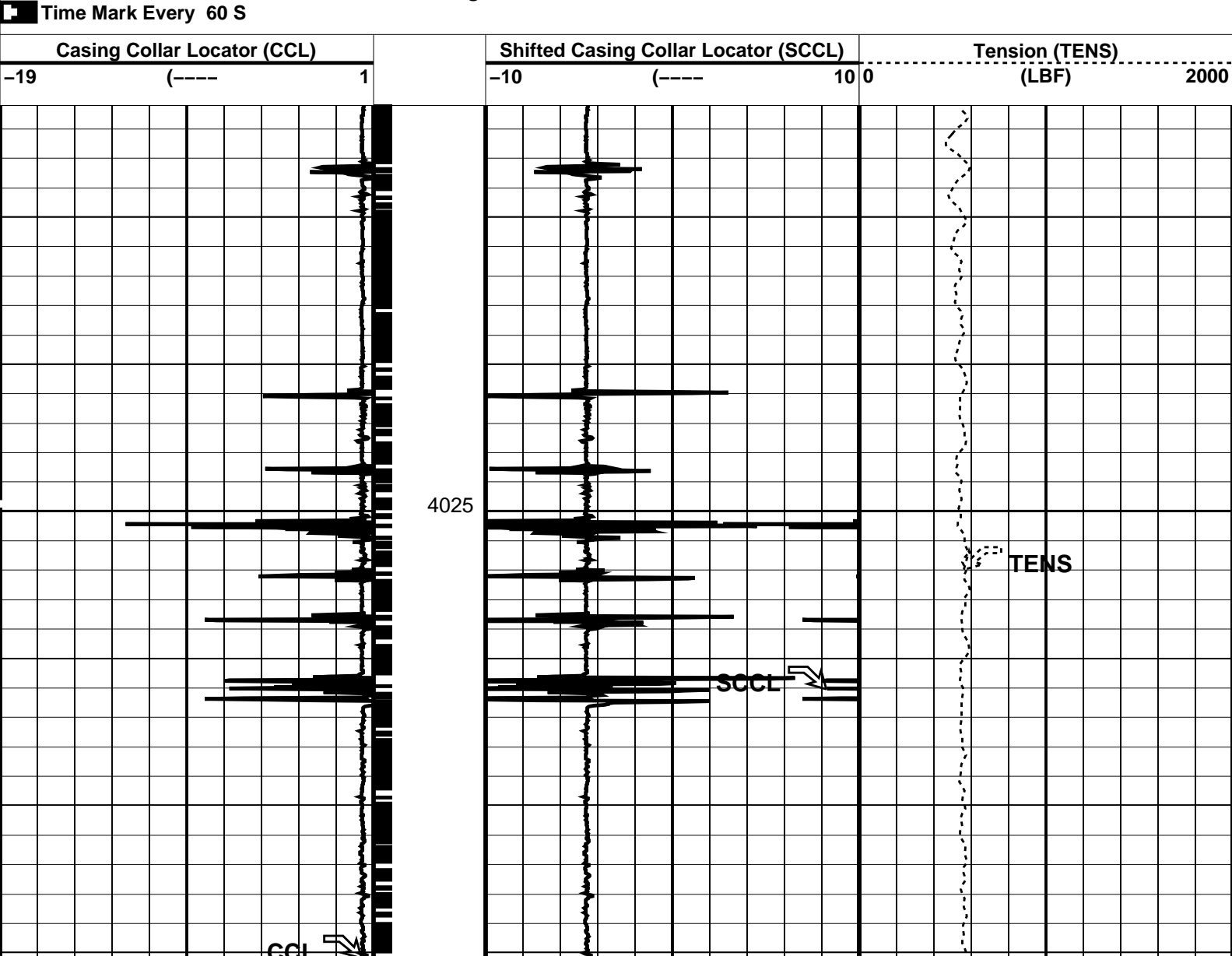
DEFAULT CCL_051PUP FN:45 PRODUCER 07-Sep-2008 11:07 4082.2 M 4011.2 M

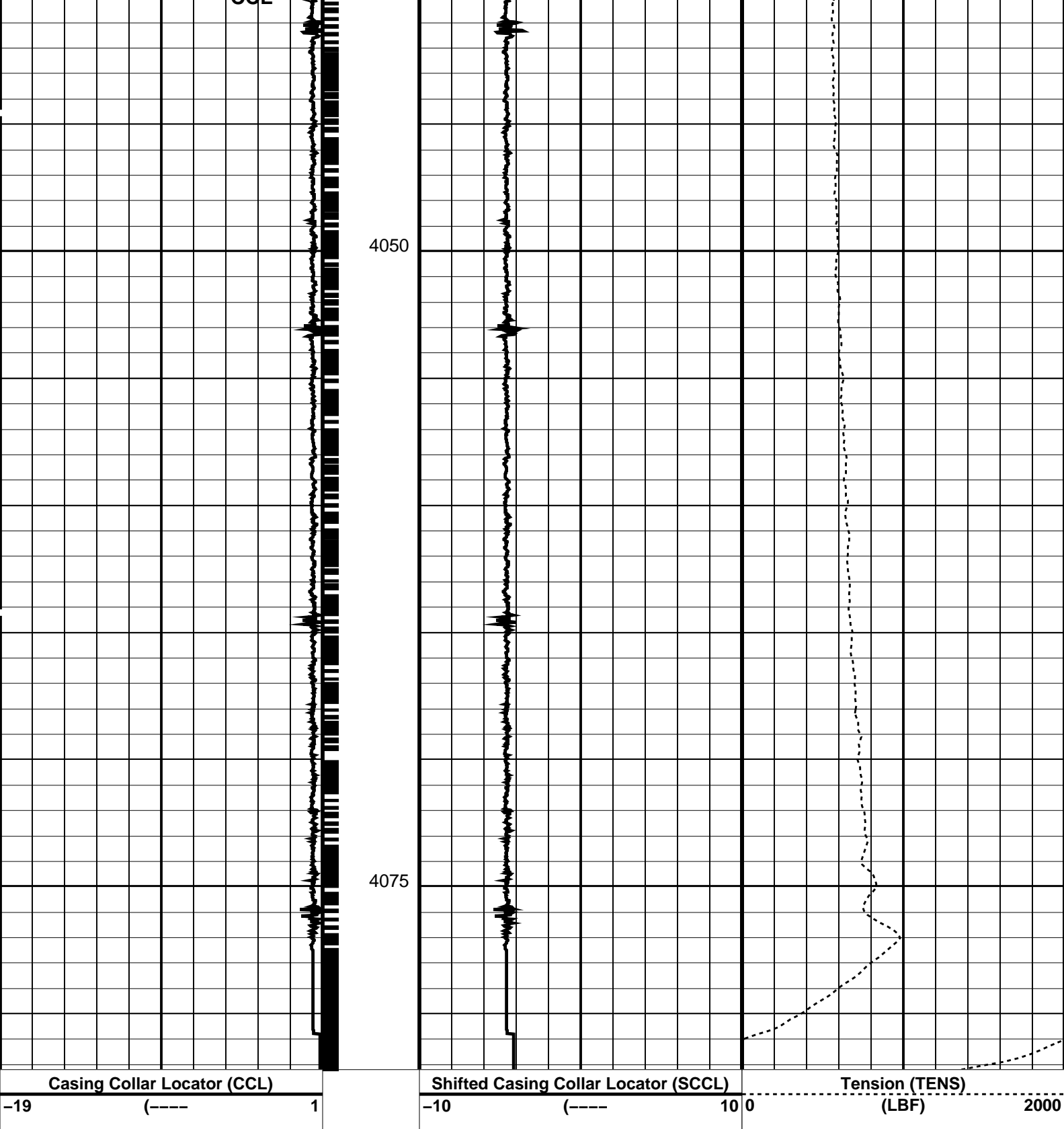
OP System Version: 15C0-309
MCM

MPEX-EA_L SRPC-3546-Q1_2008_OP15 MPSU-CA SRPC-3546-Q1_2008_OP15
CCL-L SRPC-3546-Q1_2008_OP15

PIP SUMMARY

Time Mark Every 60 S





PIP SUMMARY

Time Mark Every 60 S


└─ Casing Collars

Parameters

DLIS Name	Description	Value
CCLD	CCL-L: Casing Collar Locator	12 IN
CCLT	CCL reset delay	0.3 V
	CCL Detection Level	
	System and Miscellaneous	
DO	Depth Offset for Playback	3.0 M
PP	Playback Processing	NORMAL

Format: PERFO Vertical Scale: 1:200 Graphics File Created: 07-Sep-2008 11:07

OP System Version: 15C0-309						
MCM						
MPEX-EA_L	SRPC-3546-Q1_2008_OP15	MPSU-CA	SRPC-3546-Q1_2008_OP15			
CCL-L	SRPC-3546-Q1_2008_OP15					
Input DLIS Files						
DEFAULT	CCL_050LUP	FN:44	PRODUCER	07-Sep-2008 10:56	4079.1 M	4007.7 M
Output DLIS Files						
DEFAULT	CCL_051PUP	FN:45	PRODUCER	07-Sep-2008 11:07		



7"MPBT Plug
Set @ 4087.5m MDKB

MAXIS Field Log

Output DLIS Files					
DEFAULT	CCL_049LUP	FN:43	PRODUCER	07-Sep-2008 10:30	12192.0 M 11818.9 M

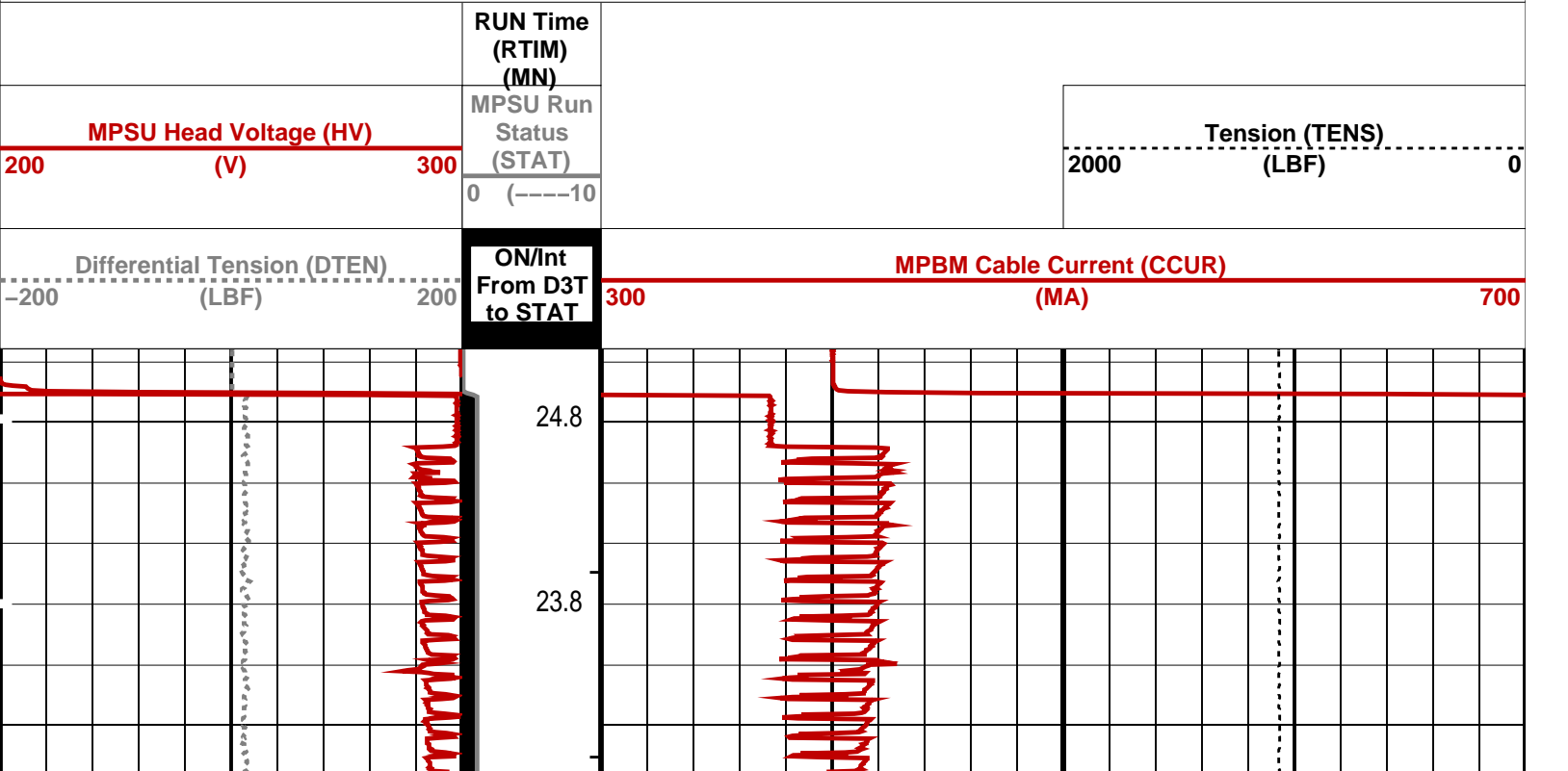
OP System Version: 15C0-309			
MCM			
MPEX-EA_L	SRPC-3546-Q1_2008_OP15	MPSU-CA	SRPC-3546-Q1_2008_OP15
CCL-L	SRPC-3546-Q1_2008_OP15		

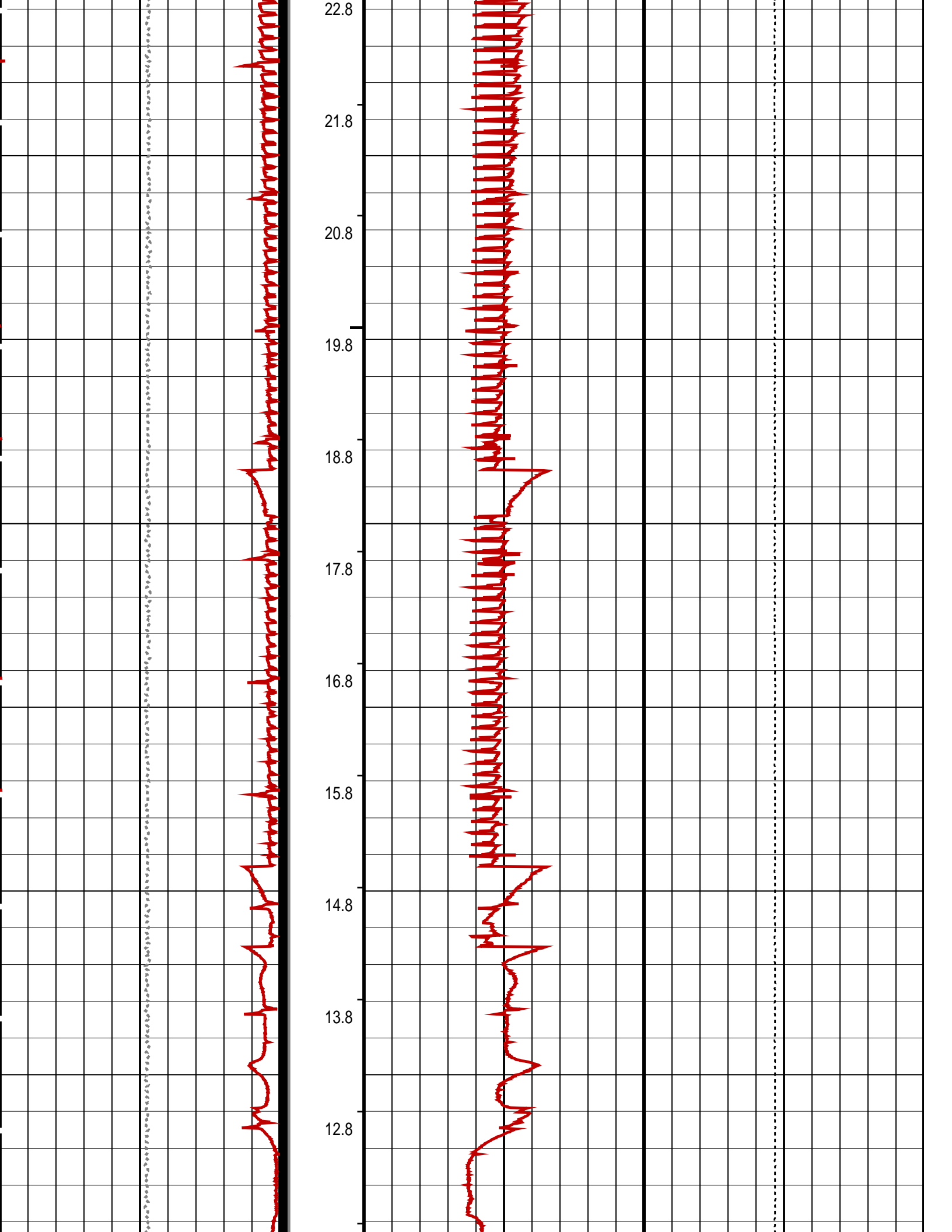
PIP SUMMARY

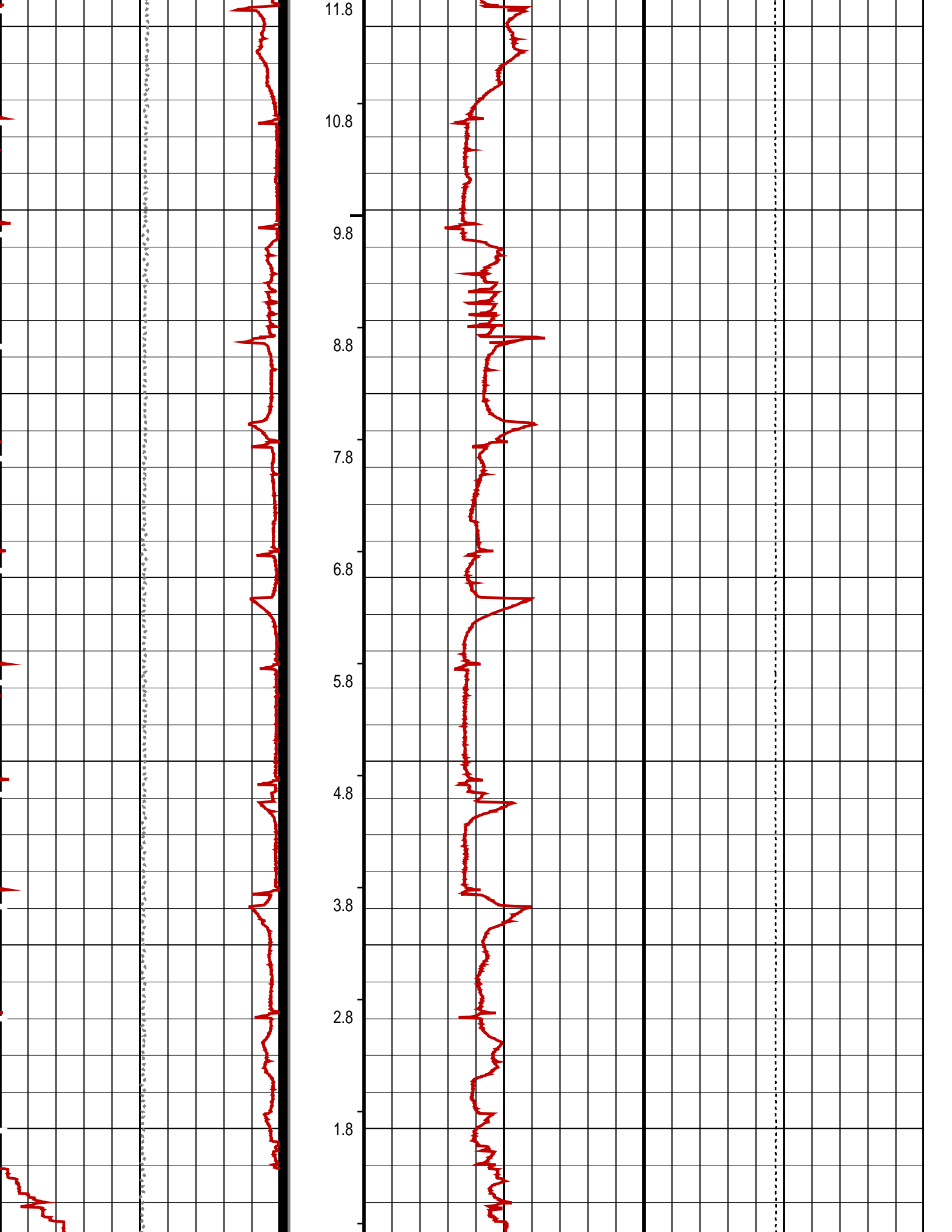
↵ MPSU Run Time Every 1 MN

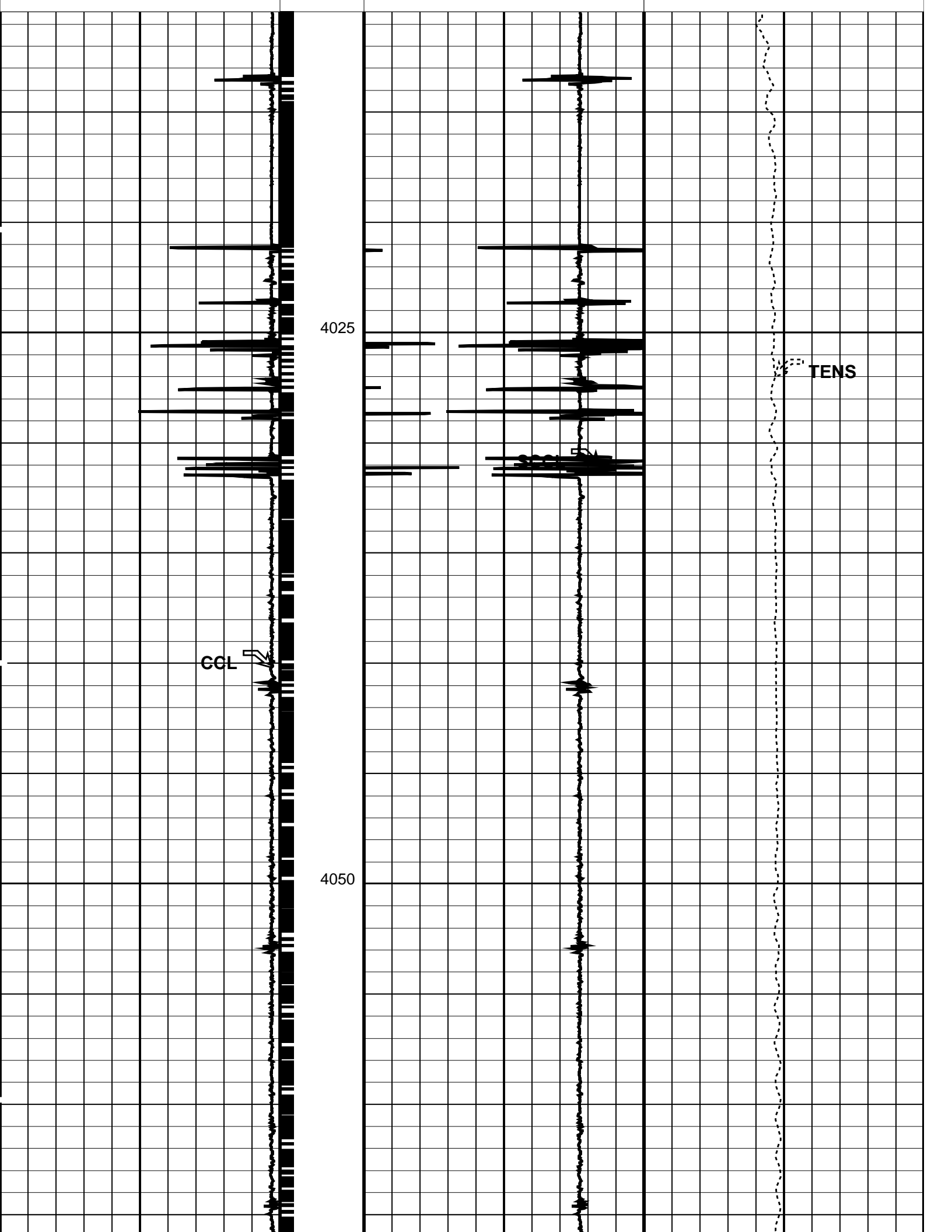
↵ MPSU Run Time Every 10 MN

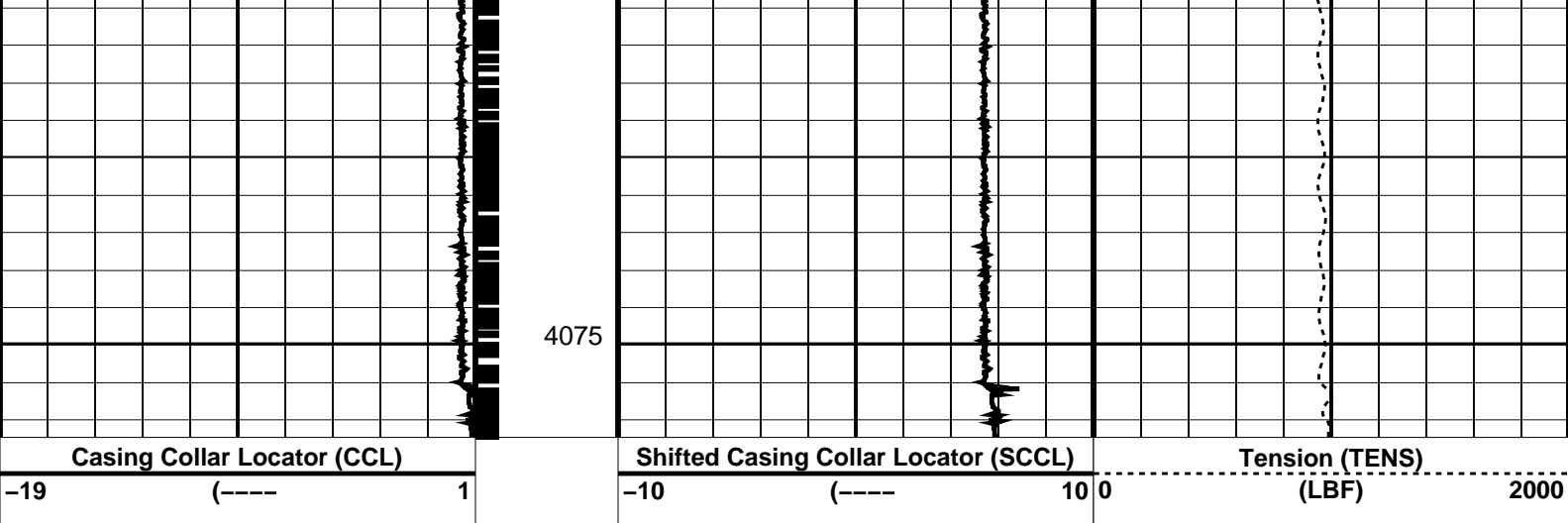
Time Mark Every 60 S











PIP SUMMARY

← Casing Collars

Time Mark Every 60 S

Parameters

DLIS Name	Description	Value
CCL-L	Casing Collar Locator	
CCLD	CCL reset delay	12 IN
CCLT	CCL Detection Level	0.3 V
System and Miscellaneous		
DO	Depth Offset for Playback	0.0 M
PP	Playback Processing	NORMAL

Format: PERFO Vertical Scale: 1:200 Graphics File Created: 07-Sep-2008 11:09

OP System Version: 15C0-309

MCM

MPEX-EA_L	SRPC-3546-Q1_2008_OP15	MPSU-CA	SRPC-3546-Q1_2008_OP15
CCL-L	SRPC-3546-Q1_2008_OP15		

Input DLIS Files

DEFAULT	FLIP_CCL_053	PRODUCER	07-Sep-2008 11:08	4077.5 M	4009.9 M
---------	--------------	----------	-------------------	----------	----------

Output DLIS Files

DEFAULT	CCL_054PUP	FN:47	PRODUCER	07-Sep-2008 11:09
---------	------------	-------	----------	-------------------

Schlumberger

Dummy Plug Pass

MAXIS Field Log

Input DLIS Files

DEFAULT	PSP_042LUP	FN:36	PRODUCER	07-Sep-2008 07:42	4108.9 M	3995.2 M
---------	------------	-------	----------	-------------------	----------	----------

Output DLIS Files

DEFAULT	PSP_044PUP	FN:38	PRODUCER	07-Sep-2008 09:01	4108.2 M	3995.2 M
---------	------------	-------	----------	-------------------	----------	----------

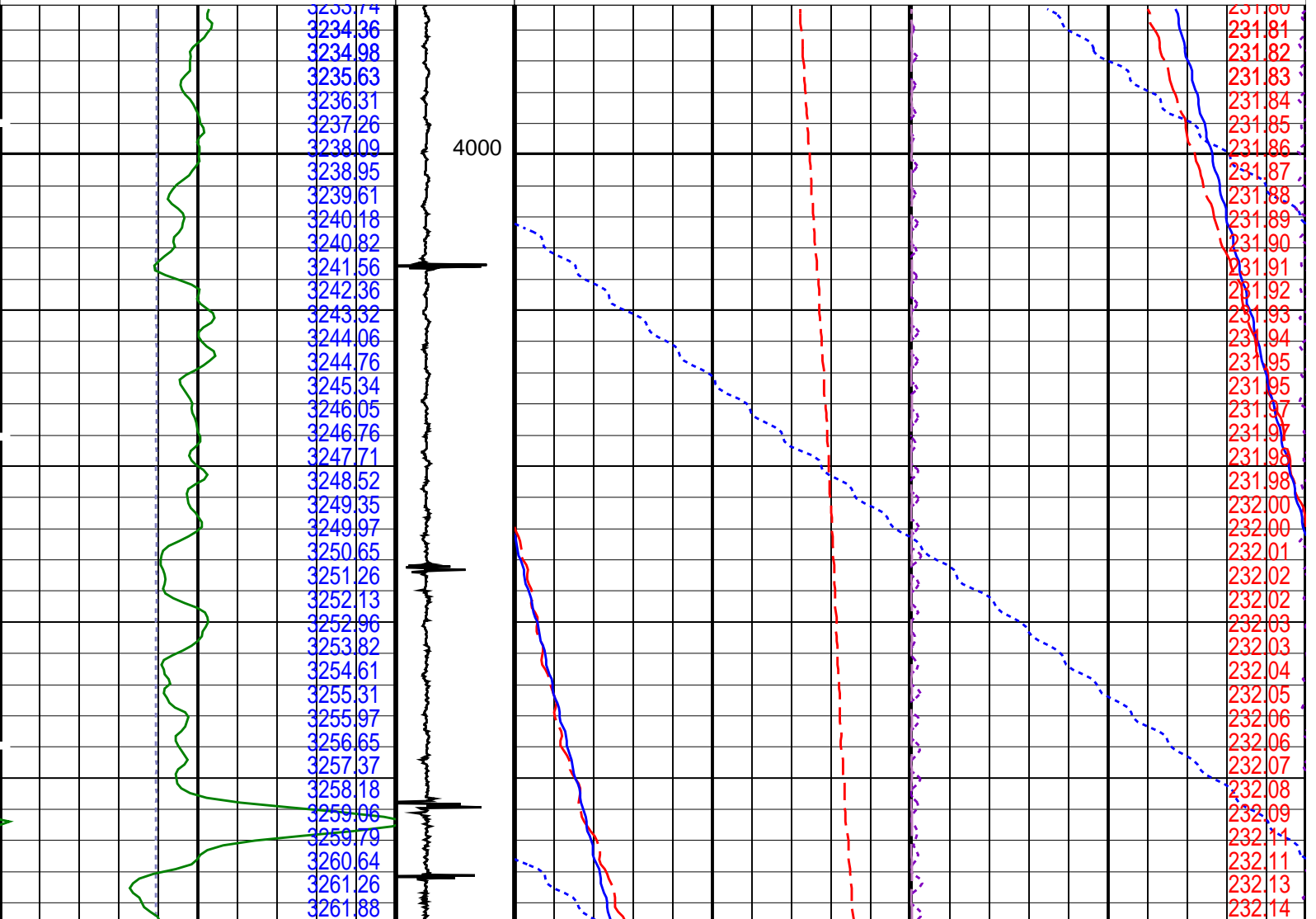
OP System Version: 15C0-309
MCM

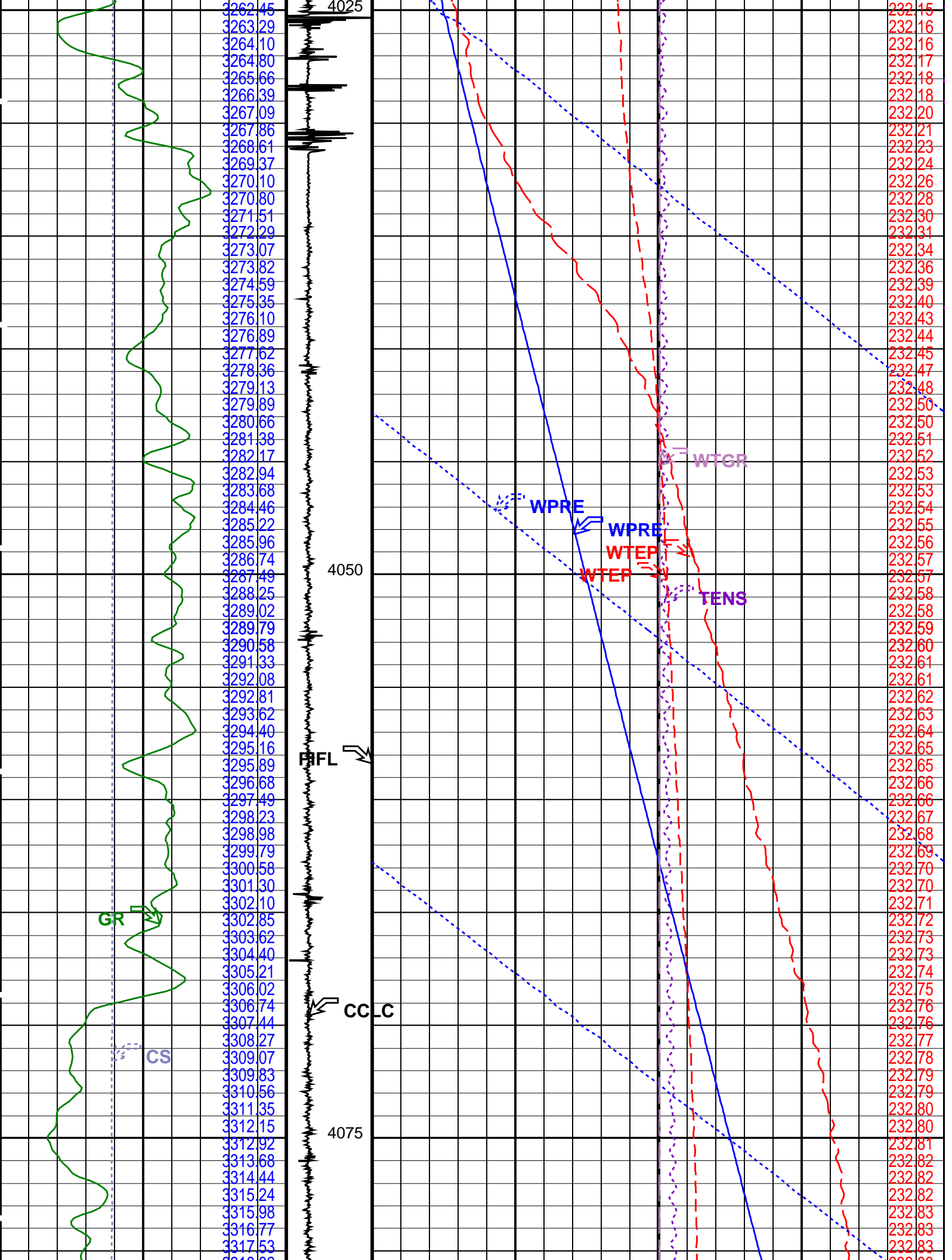
PSPT-A/B SRPC-3546-Q1_2008_OP15

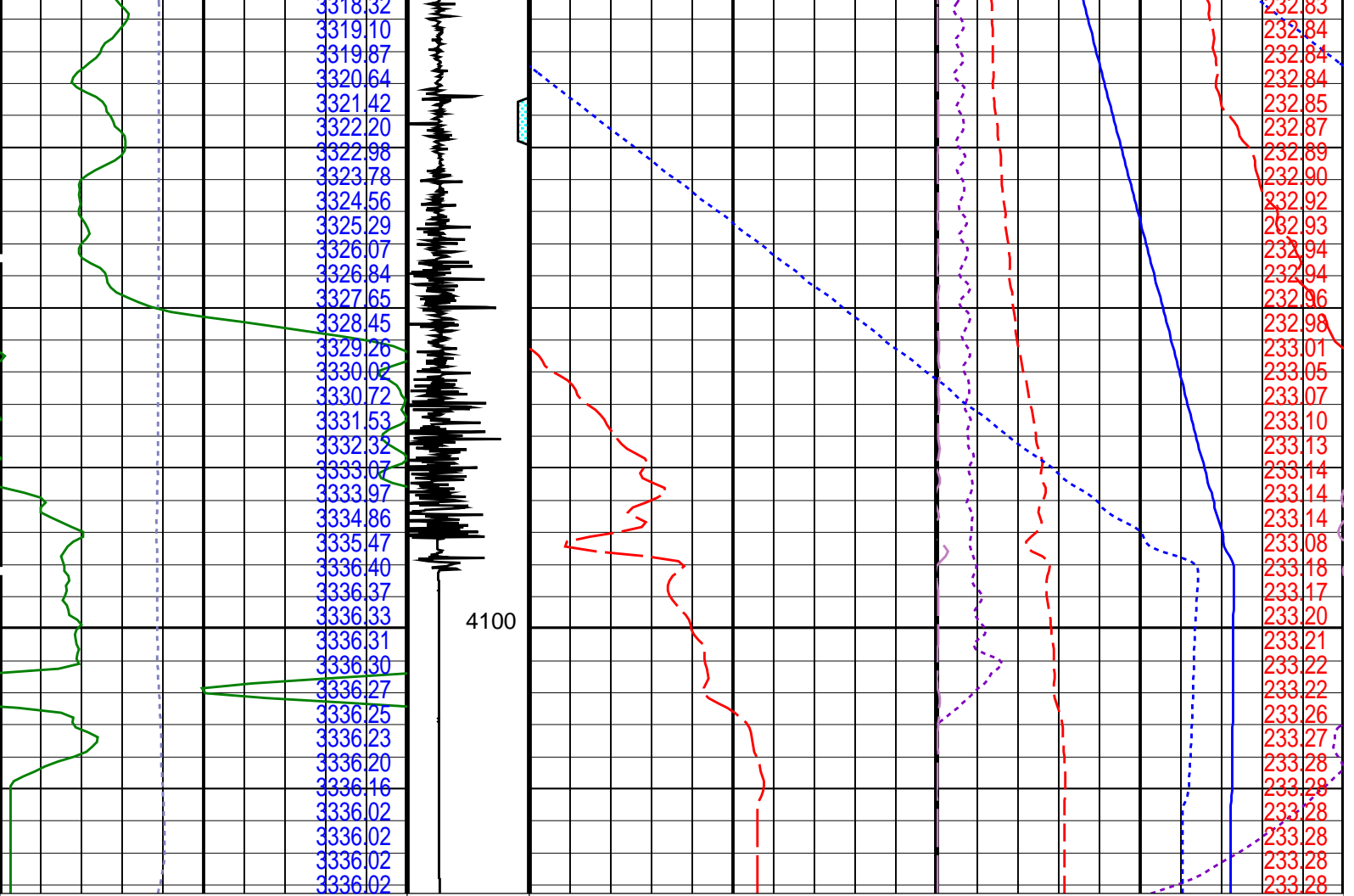
PIP SUMMARY

Time Mark Every 60 S

		Well Temperature (WTEP) (DEGF)	
		Well Temperature Gradient (WTGR) (DC/M)	
		0	10
		Tension (TENS) (LBF)	
		0	2500
		Amplified Well Pressure (WPRE) (PSIA)	
		0	20
Well Pressure (WPRE) (PSIA)		Well Pressure (WPRE) (PSIA)	
		3250	3350
Gamma Ray (GR) (GAPI)		Well Temperature (WTEP) (DEGF)	
0	150	0	1
Cable Speed (CS) (F/HR)		Well Temperature (WTEP) (DEGF)	
0	5000	230	235
		Computed CCL (CCLC) (V)	
		1	-3







Cable Speed (CS) (F/HR)		0	5000
Gamma Ray (GR) (GAPI)		0	150
Well Pressure (WPRE) (PSIA)		3250	3350
Amplified Well Pressure (WPRE) (PSIA)		0	20
Tension (TENS) (LBF)		0	2500
Well Temperature Gradient (WTGR) (DC/M)		0	10
Well Temperature (WTEP) (DEGF)		230	235

Time Mark Every 60 S

Format: PSP_1 Vertical Scale: 1:200

Graphics File Created: 07-Sep-2008 09:01

Parameters			
DLIS Name	Description	Value	
System and Miscellaneous			
DO	Depth Offset for Playback	-0.6	M
PP	Playback Processing	NORMAL	

Input DLIS Files						
DEFAULT	PSP_042LUP	FN:36	PRODUCER	07-Sep-2008 07:42	4108.9 M	3995.2 M
Output DLIS Files						
DEFAULT	PSP_044PUP	FN:38	PRODUCER	07-Sep-2008 09:01		

7" Mpbt Plug
2 1/8" Cement Dump
Record