

Company: Esso Australia Pty Ltd

Well: SNA A7a

Field: Snapper

Rig: Nabors Rig 175

Country: Australia

6" Gauge Ring / Junk Basket
7" MAXR
Setting Record

Nabors Rig 175
Snapper
Bass Strait
SNA A7a
Esso Australia Pty Ltd

LOCATION	
Bass Strait	Elev.: K.B. 41.68 m
Gippsland Basin	G.L. -55 m
	D.F. 41.68 m
Permanent Datum:	Mean Sea Level
Log Measured From:	Rig Floor
Drilling Measured From:	Drill Floor
	Elev.: 0 m
	-41.7 m above Perm. Datum

State: Victoria	Max. Well Deviation 64 deg	Longitude 148°01'26.52"E	Latitude 38°11'42.96"S
-----------------	----------------------------	--------------------------	------------------------

Logging Date

Run Number

Depth Driller

Schlumberger Depth

Bottom Log Interval

Top Log Interval

Casing Fluid Type

Salinity

Density

Fluid Level

BIT/CASING/TUBING STRING

Bit Size

From

To

Casing/Tubing Size

Weight 26 lbn/ft

Grade L80

From 0 m

To 2983 m

Maximum Recorded Temperatures

Logger On Bottom

Unit Number

Recorded By

Witnessed By

PVT DATA

Oil Density	
Water Salinity	
Gas Gravity	
Bo	
Bw	
1/Bg	
Bubble Point Pressure	
Bubble Point Temperature	
Solution GOR	
Maximum Deviation	64 deg

CEMENTING DATA

Primary/Squeeze	Primary
Casing String No	
Lead Cement Type	
Volume	
Density	
Water Loss	
Additives	
Tail Cement Type	
Volume	
Density	
Water Loss	
Additives	

Expected Cement Top

Logging Date

Run Number

Depth Driller

Schlumberger Depth

Bottom Log Interval

Top Log Interval

Casing Fluid Type

Salinity

Density

Fluid Level

BIT/CASING/TUBING STRING

Bit Size

From

To

Casing/Tubing Size

Weight

Grade

From

To

Maximum Recorded Temperatures

Logger On Bottom

Unit Number

Recorded By

Witnessed By

DEPTH SUMMARY LISTING

Date Created: 1-JUN-2008 19:32:30

Depth System Equipment

Depth Measuring Device		Tension Device		Logging Cable	
Type:	IDW-H	Type:	CMTD-B/A	Type:	7-46ZV-XS
Serial Number:	797	Serial Number:	2268	Serial Number:	707379
Calibration Date:	04-Dec-2007	Calibration Date:	6 Dec 2007	Length:	9100.11 M
Calibrator Serial Number:	1009	Calibrator Serial Number:	1174	Conveyance Method: Wireline Rig Type: Offshore_Fixed	
Calibration Cable Type:	7-46V-XS	Calibration Gain:	1.24		
Wheel Correction 1:	-6	Calibration Offset:	-904.00		
Wheel Correction 2:	3				

Depth Control Parameters

Log Sequence:	Subsequent Trip To the Well
Reference Log Name:	SNA A7a LWD Vision RM 200MD
Reference Log Date:	30-May-2008

Depth Control Remarks

1. Log correlated to reference log provided by client dated 30 May 2008.
2. IDW used as primary depth control.
3. Z Chart used as secondary depth control.

DISCLAIMER

THE USE OF AND RELIANCE UPON THIS RECORDED-DATA BY THE HEREIN NAMED COMPANY (AND ANY OF ITS AFFILIATES, PARTNERS, REPRESENTATIVES, AGENTS, CONSULTANTS AND EMPLOYEES) IS SUBJECT TO THE TERMS AND CONDITIONS AGREED UPON BETWEEN SCHLUMBERGER AND THE COMPANY, INCLUDING: (a) RESTRICTIONS ON USE OF THE RECORDED-DATA; (b) DISCLAIMERS AND WAIVERS OF WARRANTIES AND REPRESENTATIONS REGARDING COMPANY'S USE OF AND RELIANCE UPON THE RECORDED-DATA; AND (c) CUSTOMER'S FULL AND SOLE RESPONSIBILITY FOR ANY INFERENCE DRAWN OR DECISION MADE IN CONNECTION WITH THE USE OF THIS RECORDED-DATA.

Objectives: RIH with gauge ring, GR/CCL and junk basket to confirm access to HUD.
RIH with 4.5", 12 SPF HSD guns with Powerjet Omega charges and perforate the interval: 2862 - 2865m MDRT.
Tagged HUD at 2934m MDRT
Perforation Interval: 2862 - 2865m MDRT

CCL Stop Depth = 2850.34m MDRT

Logs correlated to GR peaks at 2852m MDRT & 2874m MDRT.

GR off-depth after setting guns due to 1000lbs weight loss as observed in the shooting pass.

Engineer / Specialist: R Sani & O Darby

Schlumberger Crews: R Murray & D Hiskins (Days)

N Simmons & M Hancock (Nights)

SERVICE ORDER #:
PROGRAM VERSION:

AUSL 08589249
15C0-309

[illegible]

RUN 1

RUN 2

DOWNHOLE EQUIPMENT

DOWNHOLE EQUIPMENT

PEH-A 11
PEH-A 11

AH-64 8001
AH-64 8001

PGGT-D
PGGC 6
PGGH-D 6

Gamma Ray

Casing Co Tension

AH-283 5002

AH-CPST Firing head VEA 1
AH-CPST-AA VEA 1
AH-CPST-AA

AH-MaxR
AH-MaxR

16.81

16.26

15.86

1.07

___ TOOL ZERO

14.07

13.77

13.69

11.84

PEH-A 11
PEH-A 11

5.09

AH-64 8001
AH-64 8001

4.54

PGGT-D
PGGC 6
PGGH-D 6

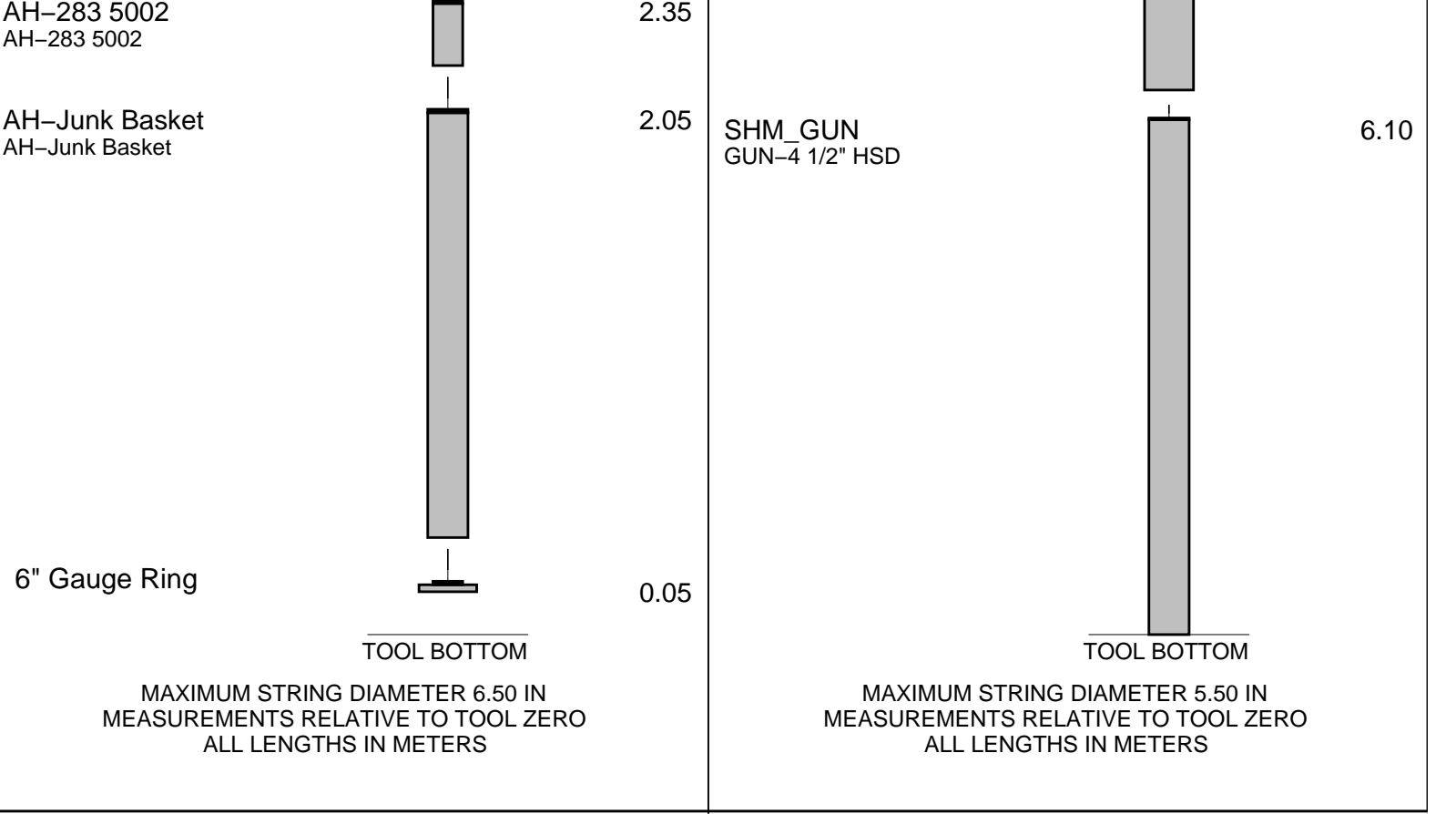
4.14

Gamma Ray

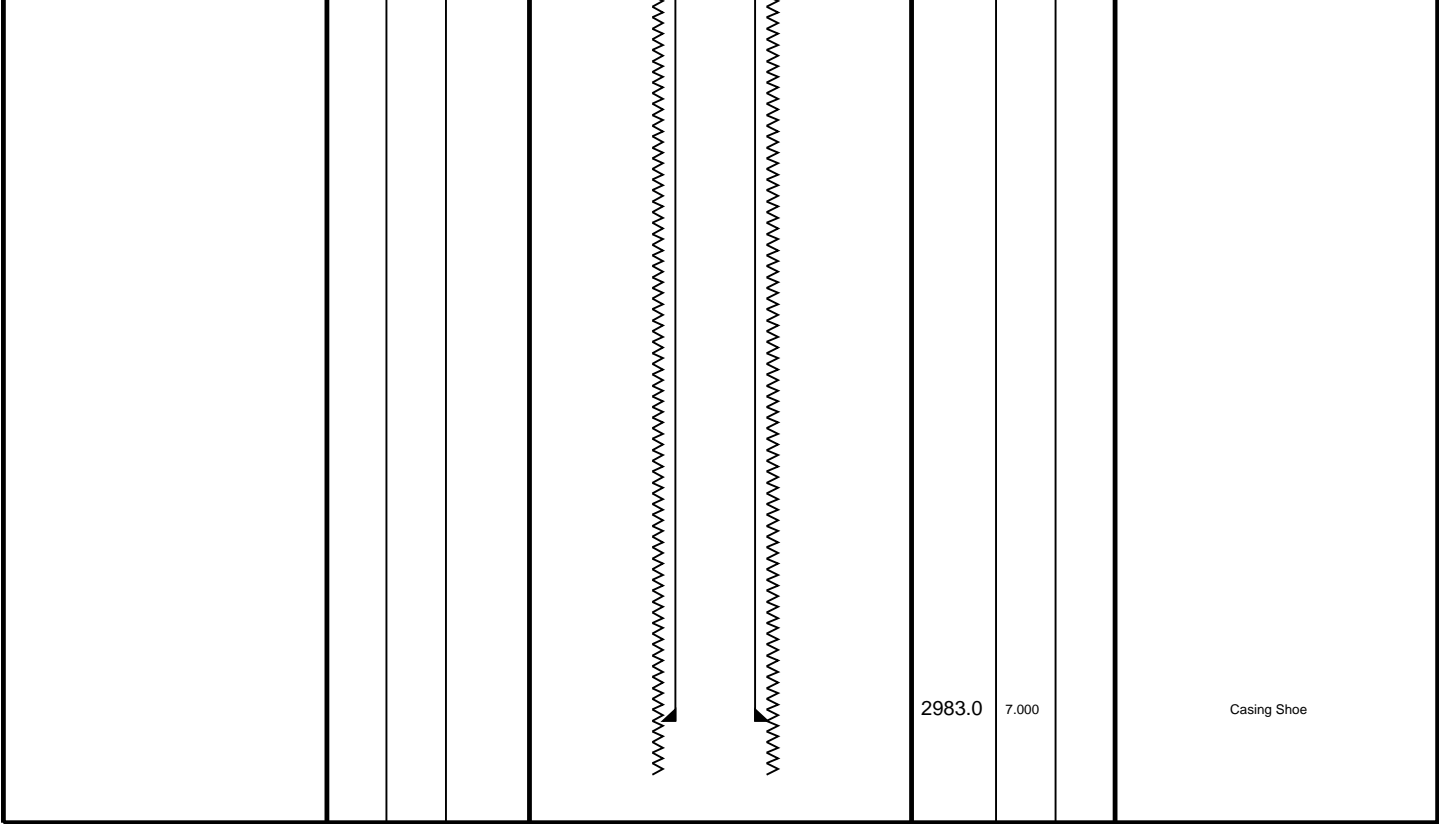
1.07

Casing Co Tension

___ TOOL ZERO



Production String	(in) (m)			Well Schematic	(m) (in)			Casing String
	OD	ID	MD		MD	OD	ID	
				<div><div><div></div><div></div></div><div><div></div><div></div></div></div>	0.0	20.000		<div>Casing String</div> <div>Casing Shoe</div>
					0.0			
					171.4			



Schlumberger

Job Event Summary

MAXIS Field Log

Schlumberger Job Event Summary

Time	Elapsed Time	Depth (M)	File
Log Pass (up)	1-Jun-2008 7:20	000:10	2939.6 - 2845.5 PERFO_014LUP
Log Pass (up)	1-Jun-2008 12:59	000:10	2909.8 - 2814.7 PERFO_033LUP
Log Pass (up)	1-Jun-2008 13:12	000:18	2909.0 - 2816.0 PERFO_034LUP

MAXIS Field Log

Company: Esso Australia Pty Ltd

Well: Snapper A7a

Output DLIS Files

DEFAULT

PERFO_034LUP

FN:33

PRODUCER

01-Jun-2008 13:12 2909.0 M

2816.0 M

OP System Version: 15C0-309

MCM

SHM_GUN

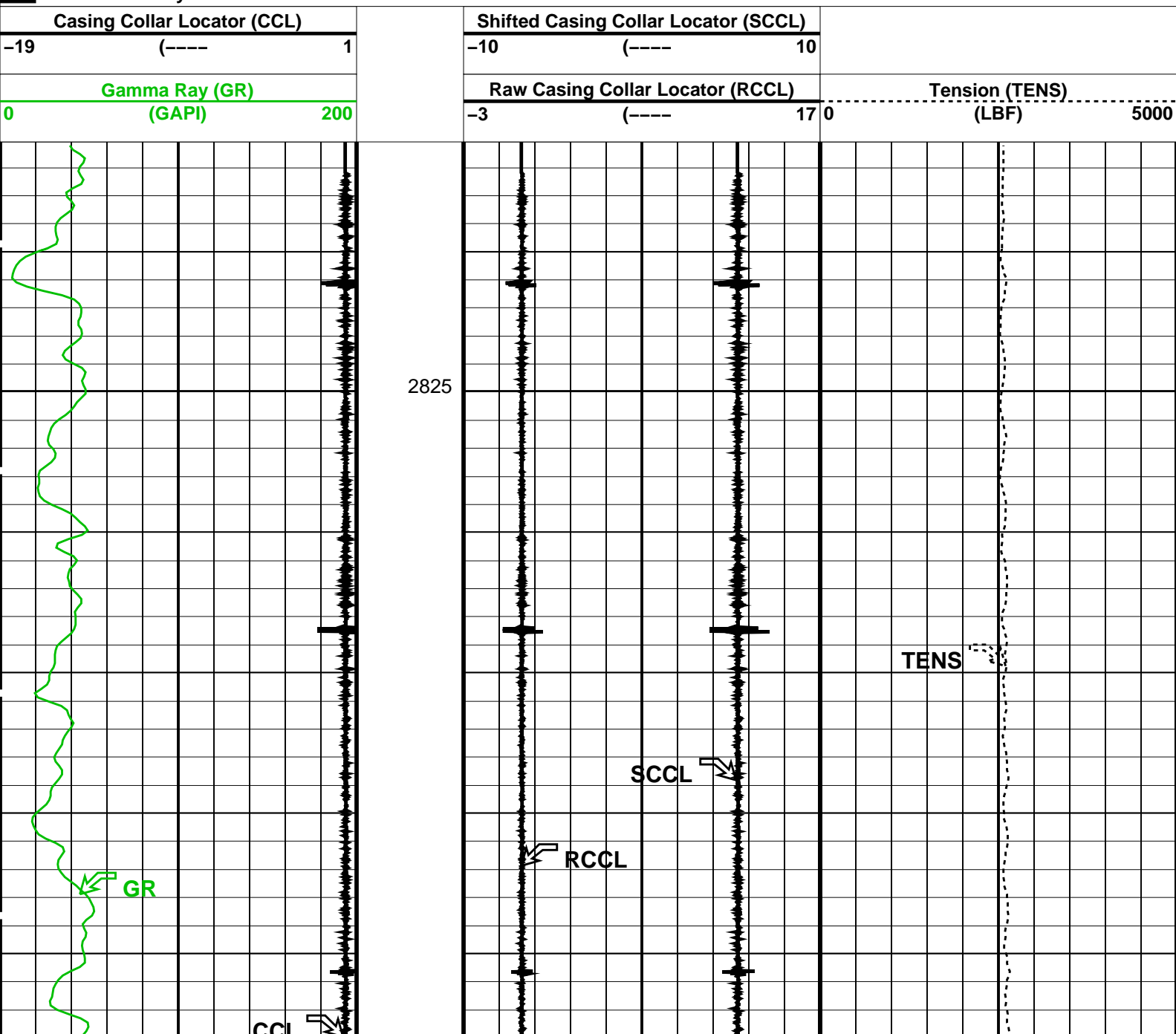
SRPC-3582-Q1_2008_OP15

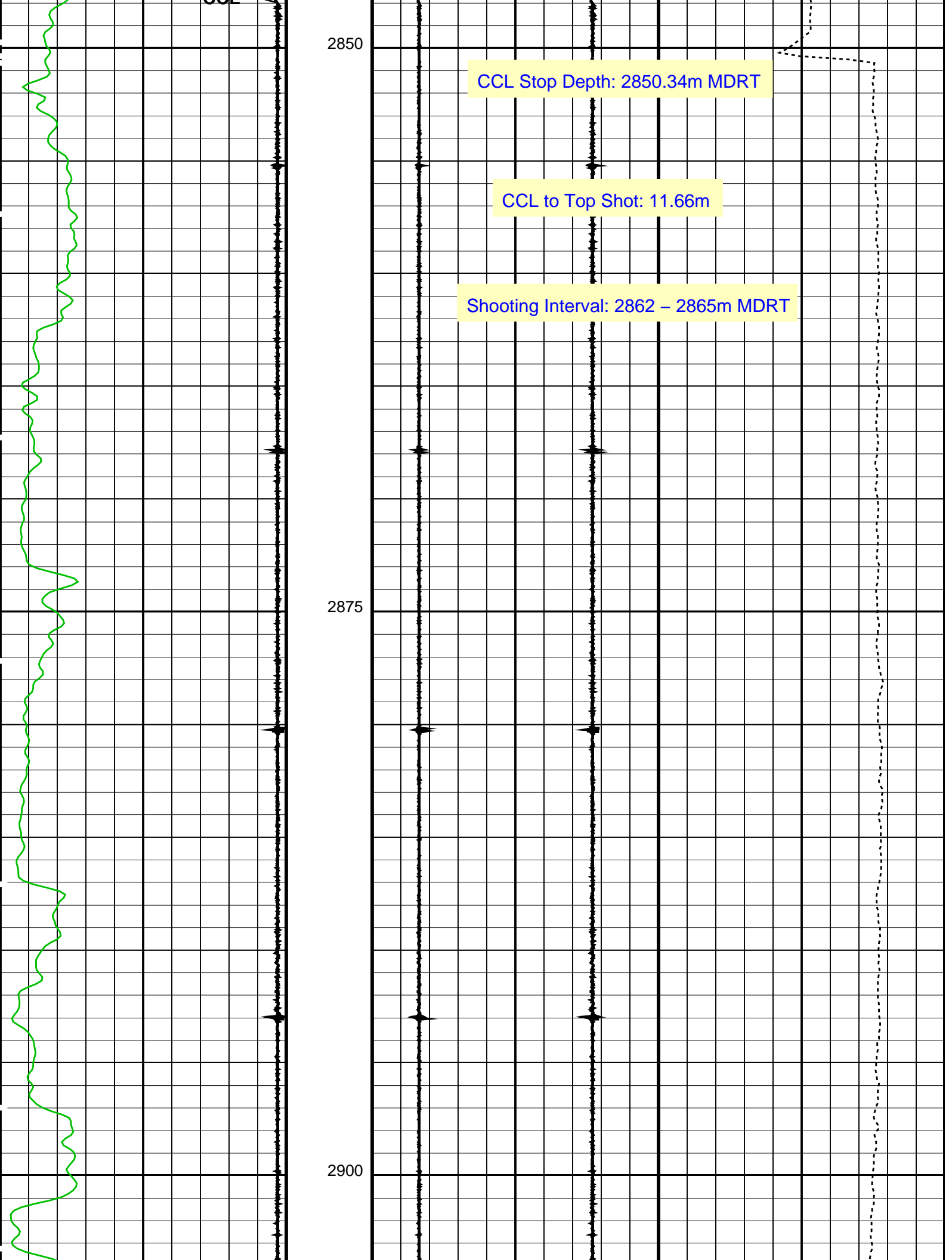
PGGT-D

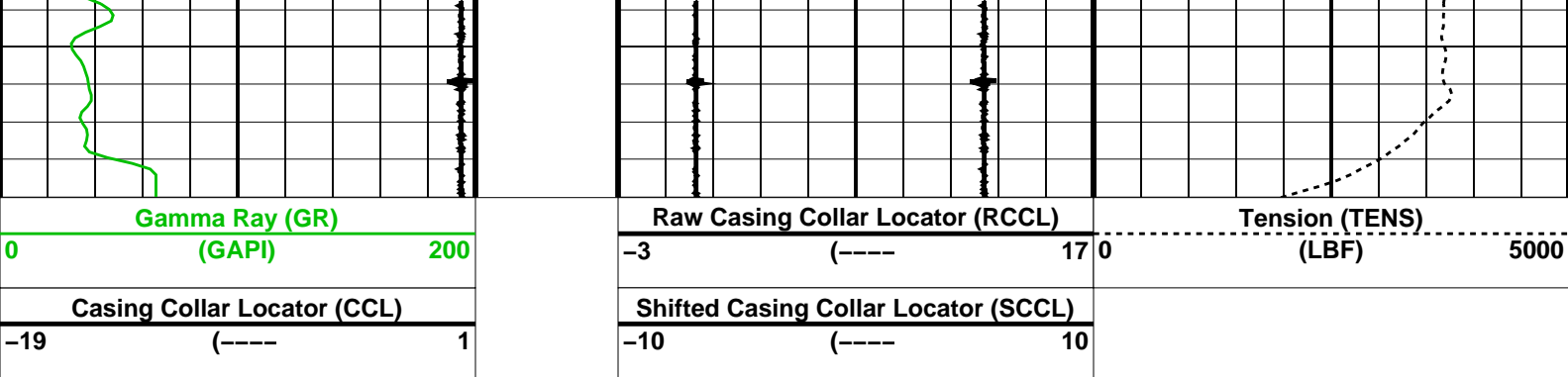
SRPC-3582-Q1_2008_OP15

PIP SUMMARY

Time Mark Every 60 S







PIP SUMMARY

Time Mark Every 60 S

Format: PERFO_1 Vertical Scale: 1:200 Graphics File Created: 01-Jun-2008 13:12

OP System Version: 15C0-309

MCM

SHM_GUN SRPC-3582-Q1_2008_OP15 PGGT-D SRPC-3582-Q1_2008_OP15

Output DLIS Files

DEFAULT PERFO_034LUP FN:33 PRODUCER 01-Jun-2008 13:12



MAXR Correlation Pass

MAXIS Field Log

Company: Esso Australia Pty Ltd Well: Snapper A7a

Output DLIS Files

DEFAULT PERFO_033LUP FN:32 PRODUCER 01-Jun-2008 12:59 2909.8 M 2814.7 M

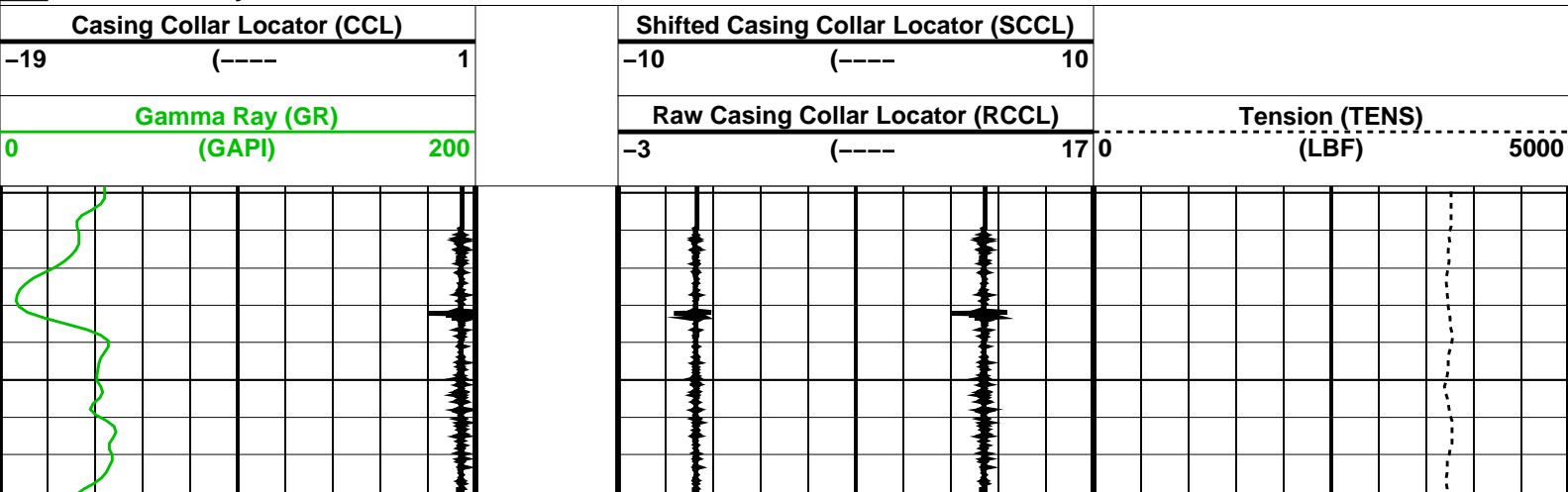
OP System Version: 15C0-309

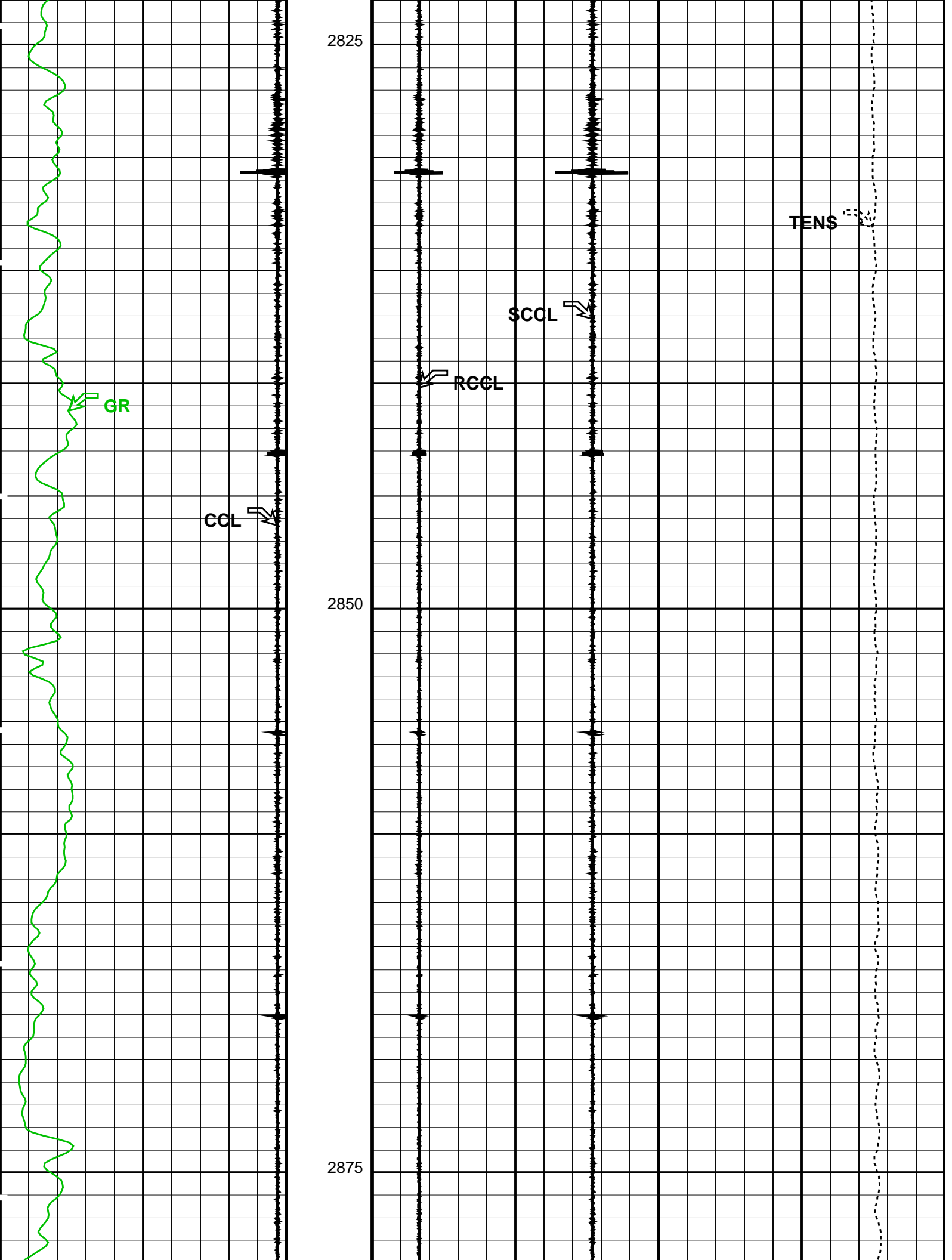
MCM

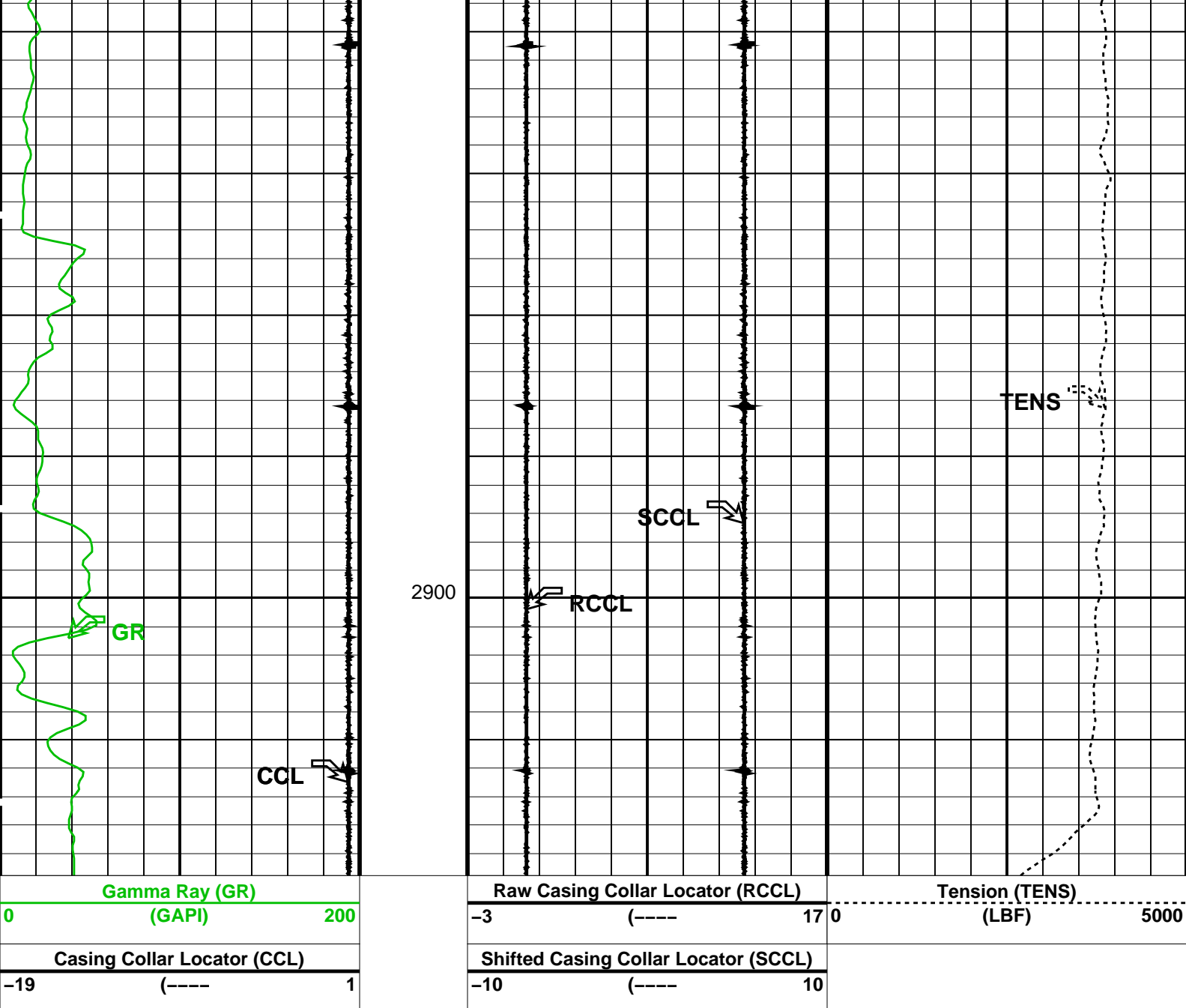
SHM_GUN SRPC-3582-Q1_2008_OP15 PGGT-D SRPC-3582-Q1_2008_OP15

PIP SUMMARY

Time Mark Every 60 S







PIP SUMMARY

Time Mark Every 60 S

Format: PERFO_1 Vertical Scale: 1:200

Graphics File Created: 01-Jun-2008 12:59

OP System Version: 15C0-309
MCM

SHM_GUN SRPC-3582-Q1_2008_OP15 PGGT-D SRPC-3582-Q1_2008_OP15

Output DLIS Files

DEFAULT PERFO_033LUP FN:32 PRODUCER 01-Jun-2008 12:59

Schlumberger

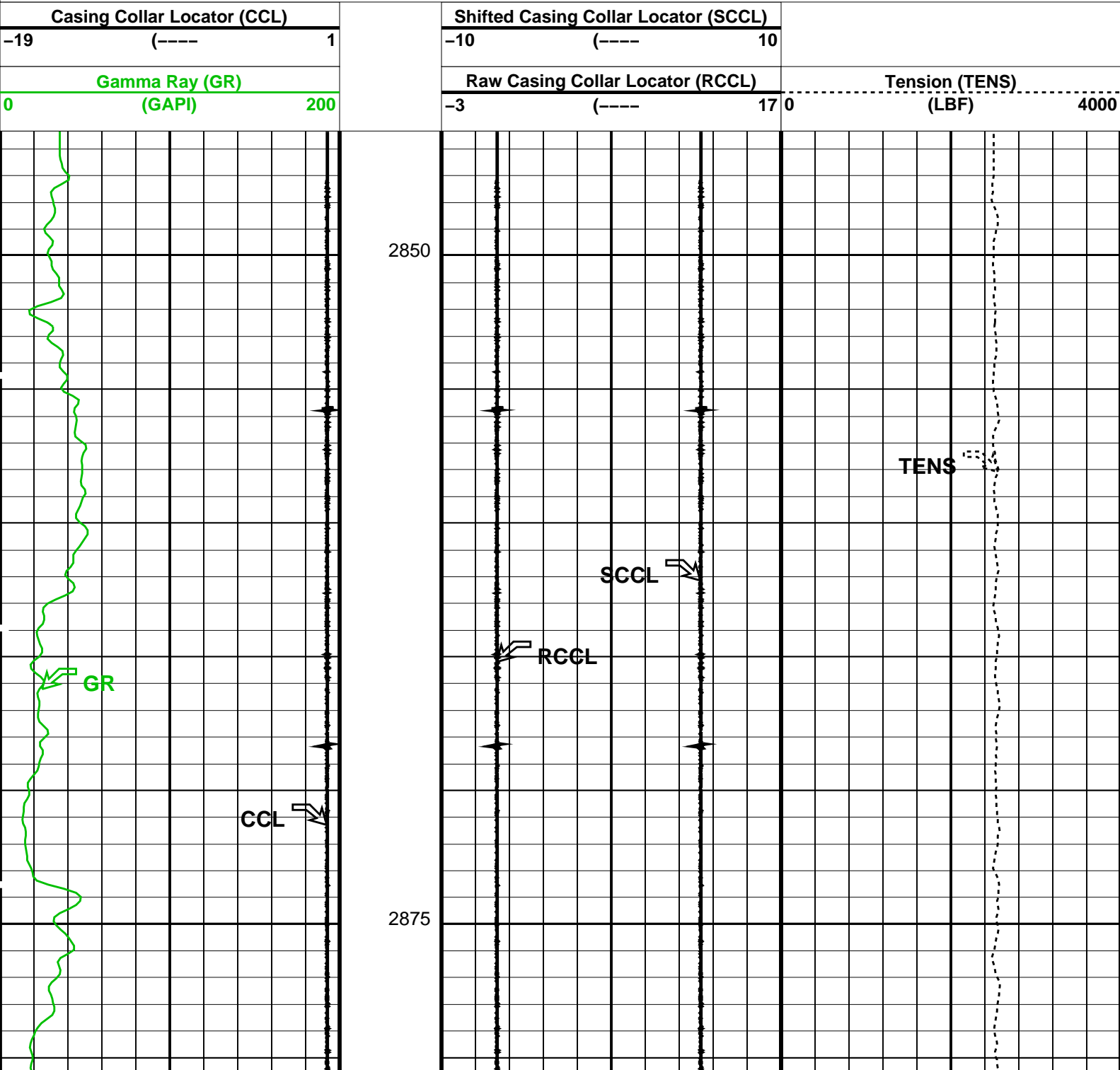
Junk Basket / Gauge Ring Pass

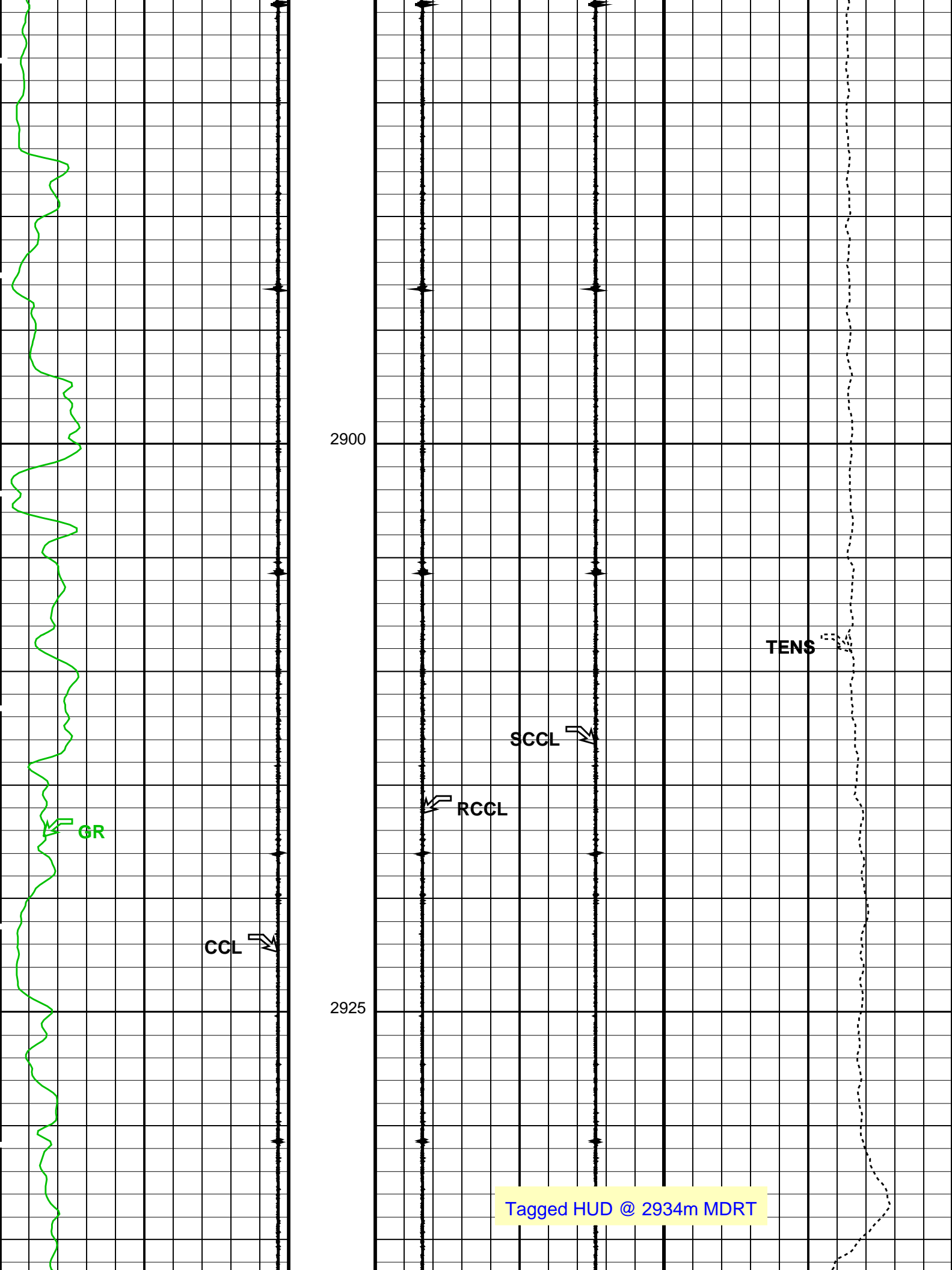
Input DLIS Files					
DEFAULT	PERFO_014LUP	FN:13	PRODUCER	01-Jun-2008 07:20	2939.6 M 2845.5 M
Output DLIS Files					
DEFAULT	PERFO_015PUP	FN:14	PRODUCER	01-Jun-2008 07:31	2940.1 M 2845.2 M

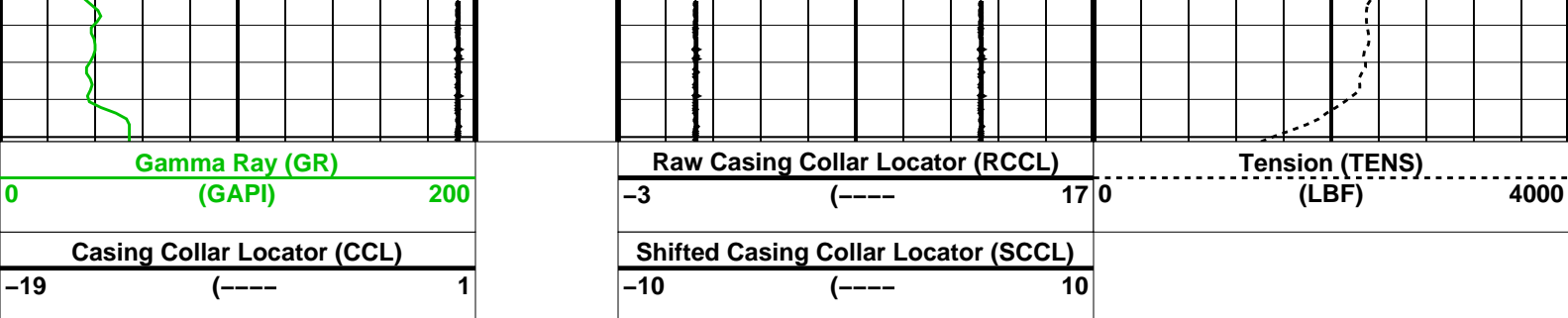
OP System Version: 15C0-309					
MCM					
SHM_GUN	SRPC-3582-Q1_2008_OP15	PGGT-D	SRPC-3582-Q1_2008_OP15		

PIP SUMMARY

Time Mark Every 60 S







PIP SUMMARY

Time Mark Every 60 S

Parameters

DLIS Name	Description	Value
DO	System and Miscellaneous	
PP	Depth Offset for Playback	0.5 M
	Playback Processing	NORMAL

Format: PERFO_1 Vertical Scale: 1:200 Graphics File Created: 01-Jun-2008 07:31

OP System Version: 15C0-309

MCM

SHM_GUN SRPC-3582-Q1_2008_OP15 PGGT-D SRPC-3582-Q1_2008_OP15

Input DLIS Files

DEFAULT PERFO_014LUP FN:13 PRODUCER 01-Jun-2008 07:20 2939.6 M 2845.5 M

Output DLIS Files

DEFAULT PERFO_015PUP FN:14 PRODUCER 01-Jun-2008 07:31

Company: Esso Australia Pty Ltd

Schlumberger

Well: SNA A7a

Field: Snapper

Rig: Nabors Rig 175

Country: Australia

6" Gauge Ring / Junk Basket

7" MAXR

Setting Record