

[illegible]

Company: Esso Australia Pty Ltd.

Well: B-18a
Field: Kingfish B
Rig : Prod4 / Crane

Country: Australia

Prod4 / Crane
Field: Kingfish B
Location: Gippsland
Well: B-18a
Company: Esso Australia Pty Ltd.

RST-C Sigma
& Carbon Oxygen
Survey

LOCATION	
Gippsland Basin Bass Strait	Elev.: K.B. 28.3 m G.L. -59 m D.F. 28.3 m
Permanent Datum: Log Measured From:	M.S.L. D.F.
Drilling Measured From:	D.F.

State : Victoria	Max. Well Deviation 47 deg	Longitude 148 11'11.96"E	Latitude 038 35'54.36"S
---------------------	-------------------------------	-----------------------------	----------------------------

Logging Date	17-May-2008			
Run Number	1 & 2			
Depth Driller	2731 m			
Schlumberger Depth	2731 m			
Bottom Log Interval	2731 m			
Top Log Interval	2660 m			
Casing Fluid Type	Production Fluids			
Salinity				
Density				
Fluid Level	220 m			
BIT/CASING/TUBING STRING				
Bit Size	6.500 in			
From	1715 m			
To	2817 m			
Casing/Tubing Size	5.000 in			
Weight	15 lbm/ft			
Grade	L-80			
From	1546.66 m			
To	2812.5 m			
Maximum Recorded Temperatures	218 degF			
Logger On Bottom	17-May-2008		17:30	
Unit Number	Location	889		
Recorded By	G Wright.			
Witnessed By	G Rimmer.			

Run 1			
PVT DATA			
Oil Density			
Water Salinity			
Gas Gravity			
Bo			
Bw			
1/Bg			
Bubble Point Pressure			
Bubble Point Temperature			
Solution GOR			
Maximum Deviation	47 deg		
CEMENTING DATA			
Primary/Squeeze	Primary		
Casing String No			
Lead Cement Type			
Volume			
Density			
Water Loss			
Additives			
Tail Cement Type			
Volume			
Density			
Water Loss			
Additives			
Expected Cement Top			
Logging Date			
Run Number			
Depth Driller			
Schlumberger Depth			
Bottom Log Interval			
Top Log Interval			
Casing Fluid Type			
Salinity			
Density			
Fluid Level			
BIT/CASING/TUBING STRING			
Bit Size			
From			
To			
Casing/Tubing Size			
Weight			
Grade			
From			
To			
Maximum Recorded Temperatures			
Logger On Bottom	Time		
Unit Number	Location		
Recorded By			
Witnessed By			

DEPTH SUMMARY LISTING

Date Created: 17-MAY-2008 7:10:35

Depth System Equipment

Depth Measuring Device	Tension Device	Logging Cable
Type: IDW-EB Serial Number: 6373 Calibration Date: 04-JAN-2007 Calibrator Serial Number: 9 Calibration Cable Type: 2-32ZT Wheel Correction 1: -2 Wheel Correction 2: -4	Type: PSDS/OSDS Serial Number: 325357 Calibration Date: 17-May-2008 Calibrator Serial Number: 1174 Calibration Gain: 0.90 Calibration Offset: -191.00	Type: 2-32ZT Serial Number: 27244 Length: 6227.98 M Conveyance Method: Wireline Rig Type: Rigless

Depth Control Parameters

Log Sequence:	Subsequent Log In the Well
Reference Log Name:	Solar Composite Log
Reference Log Run Number:	
Reference Log Date:	.

Depth Control Remarks

1. IDW used as primary depth control.
2. Z-chart used as secondary backup
3.
4.
5.
6.

DISCLAIMER

THE USE OF AND RELIANCE UPON THIS RECORDED-DATA BY THE HEREIN NAMED COMPANY (AND ANY OF ITS AFFILIATES, PARTNERS, REPRESENTATIVES, AGENTS, CONSULTANTS AND EMPLOYEES) IS SUBJECT TO THE TERMS AND CONDITIONS AGREED UPON BETWEEN SCHLUMBERGER AND THE COMPANY, INCLUDING: (a) RESTRICTIONS ON USE OF THE RECORDED-DATA; (b) DISCLAIMERS AND WAIVERS OF WARRANTIES AND REPRESENTATIONS REGARDING COMPANY'S USE OF AND RELIANCE UPON THE RECORDED-DATA; AND (c) CUSTOMER'S FULL AND SOLE RESPONSIBILITY FOR ANY INFERENCE DRAWN OR DECISION MADE IN CONNECTION WITH THE USE OF THIS RECORDED-DATA.

OTHER SERVICES1
OS1: 2 1/8" Powerjet
OS2: Perforation
OS3: 5" MpbT
OS4: Plug

REMARKS: RUN NUMBER 1
Log correlated to ExxonMobil composite supplied with logging program.
Maximum well deviation = 47 degrees at 1054m MDKB.
RST-C Sigma survey from HUD at 2731m to 2665m MDKB.
Two passes at 900 ft/hr, GR pass incorporated in first log up
due to problems getting to depth.
SBHP = 3125 psia, SBHT = 218 degf.
CO survey over interval 2710m to 2675m MDKB with the well shut-in.
Four passes only as weather conditions deteriorated.

Attempted to flow well prior to CO survey,flow was not possible
due to sliding sleeve problems.

Crew : J Annear,J Light.

RUN 1			
SERVICE ORDER #:		Ausl08509116	
PROGRAM VERSION:		15C0-309	
FLUID LEVEL:		220 m	
LOGGED INTERVAL	START	STOP	

EQUIPMENT DESCRIPTION

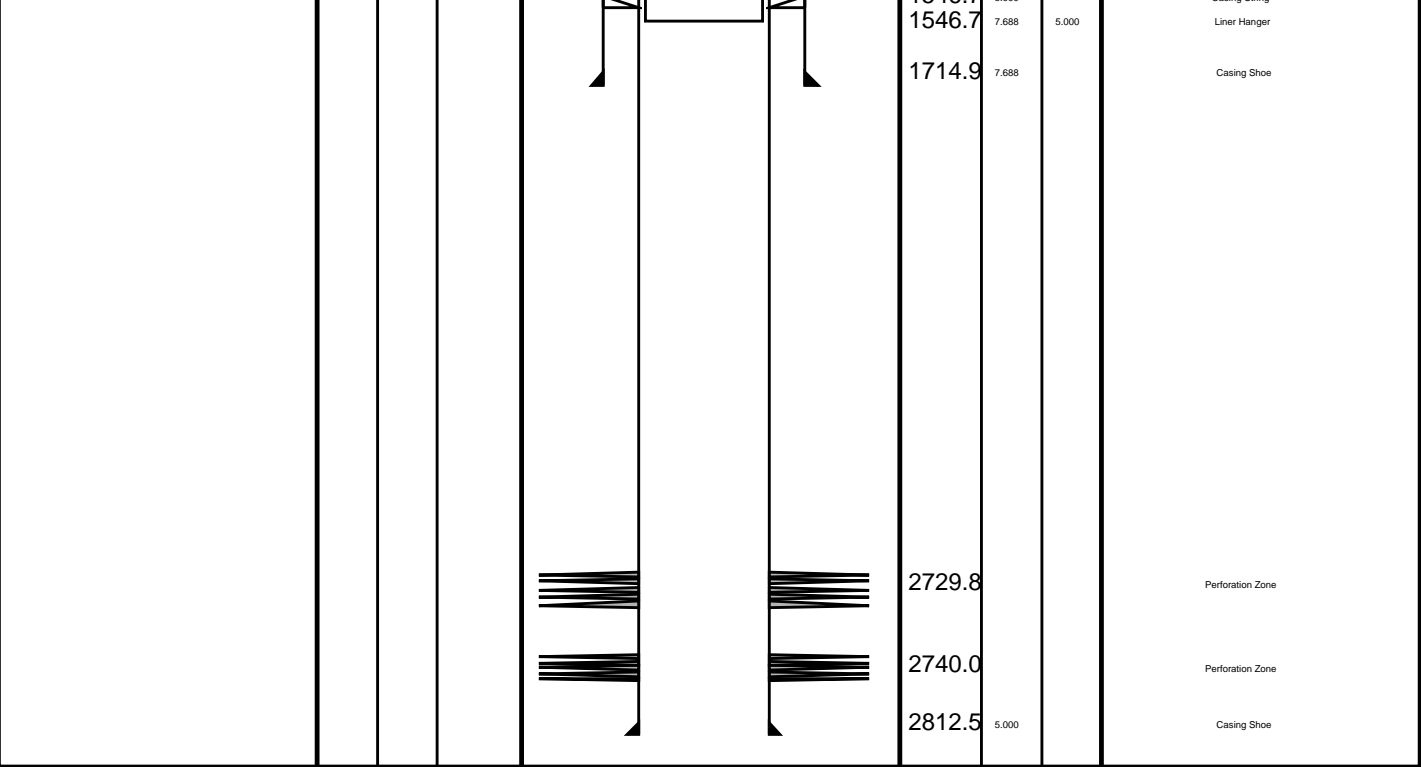
RUN 1			
SURFACE EQUIPMENT			
WITM-A PSC_16MHZ			
DOWNHOLE EQUIPMENT			
SWBS-B 787			11.93
SWBS-B 786			11.24
SWBS-B 785			10.55
SWHS-A 759	Detail MT TelStatus CTEM	9.87	
PSC-A 818 PSPT-B 818 PSTC 819 PBMS-B 818 CQG_F_Mano 818 RTD Thermometer 818 GR 818 CCL 818 PBMS 818	GR	9.54 8.41	9.54
	Well_Temp CQG Manom CCL PBMS PSTC	7.48 7.37 7.25 7.02	
RST-C BLU1 RSCH-A 111 RSC-C 132 RSS-A 106 RSXH-A 145 RSX-C 132			7.02
PSC-A 500			4.84

RSC-A Far 4.24
RSC-A PNG
RSC-A Nea
RSX-A PNG 4.09

Tension HV 0.00
TOOL ZERO

MAXIMUM STRING DIAMETER 1.72 IN
MEASUREMENTS RELATIVE TO TOOL ZERO
ALL LENGTHS IN METERS

Production String	(in)		(m)	Well Schematic	(m)	(in)		Casing String
	OD	ID	MD		MD	OD	ID	
Tubing Tubing Hanger	4.500		14.9		16.0			Casing String Liner Hanger
	7.688	4.500	13.0		16.0	10.750	7.688	
Shutin Valve	4.500		139.0					
Sliding Sleeve	4.500		511.0					
					663.5	10.750		Casing Shoe
Sliding Sleeve	4.500		944.0					
Sliding Sleeve	4.500		1487.0					
Nipple	4.500		1501.0					
Packer	7.688	4.500	1509.0					
Nipple	4.500		1530.0		1546.7	5.000		Casing String



Job Event Summary

MAXIS Field Log

Schlumberger Job Event Summary

Time	Elapsed Time	Depth (M)	File
Log Pass (down)	19-May-2008 7:39	000:59	-4.3 - 2738.3 RST_PSP_035LDP
Log Pass (up)	19-May-2008 8:37	000:06	2742.3 - 2682.4 RST_PSP_036LUP
Log Pass (up)	19-May-2008 8:55	001:07	2717.3 - 2665.8 RST_PSP_038LUP
Log Pass (up)	19-May-2008 10:03	001:10	2716.8 - 2664.3 RST_PSP_039LUP
Log Pass (up)	19-May-2008 11:15	001:04	2715.0 - 2664.4 RST_PSP_040LUP
Log Pass (up)	19-May-2008 12:21	001:08	2715.5 - 2664.6 RST_PSP_041LUP
Log Pass (up)	19-May-2008 13:59	000:07	127.9 - -2.4 RST_PSP_046LUP

Company: Esso Australia Pty Ltd.

Well: B-18a

Input DLIS Files

DEFAULT	RST_PSP_041LUP	FN:40	PRODUCER	19-May-2008 12:21	2715.5 M	2664.6 M
---------	----------------	-------	----------	-------------------	----------	----------

Output DLIS Files

DEFAULT	RST_PSP_044PUP	FN:43	PRODUCER	19-May-2008 13:40	2715.9 M	2660.0 M
---------	----------------	-------	----------	-------------------	----------	----------

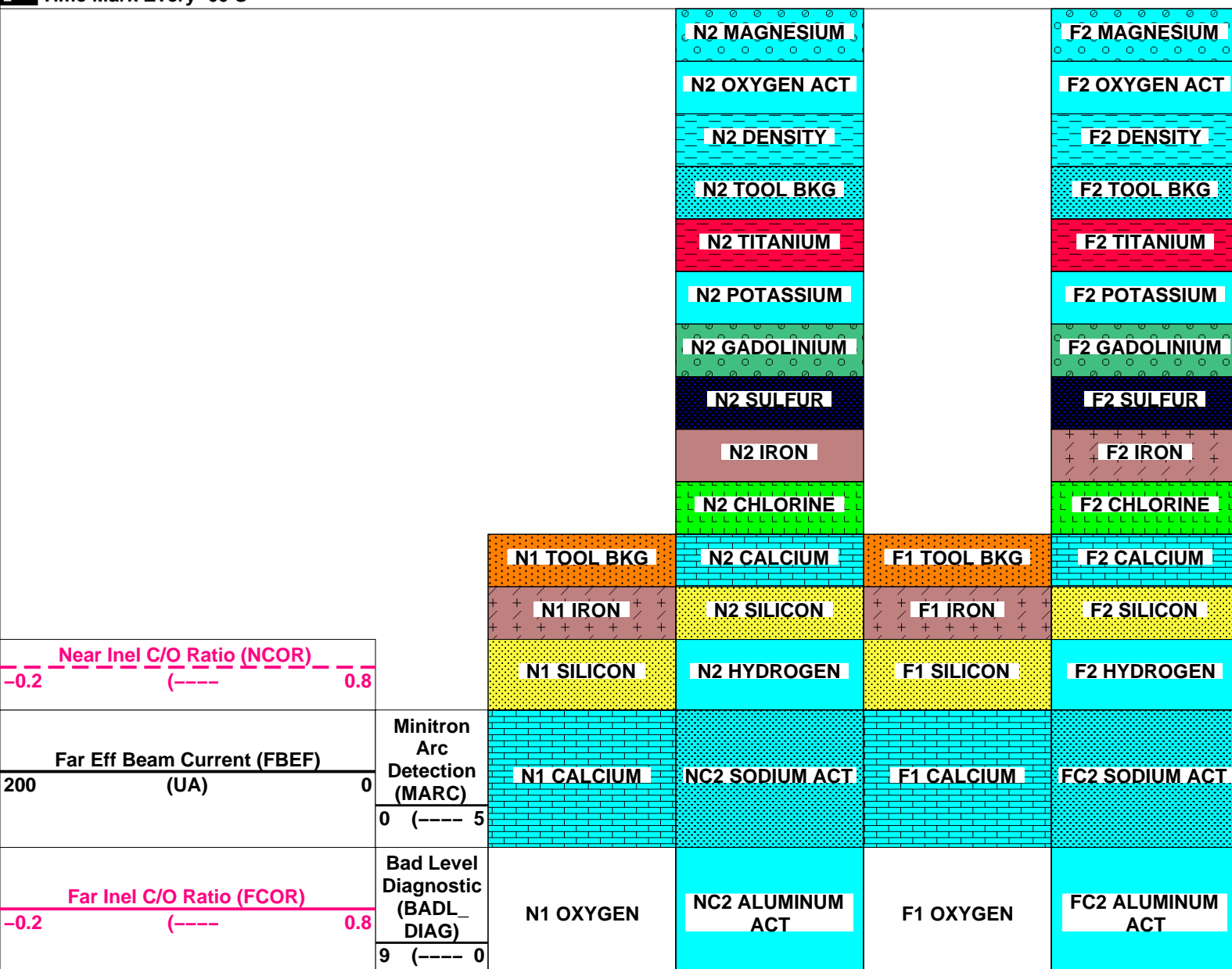
OP System Version: 15C0-309

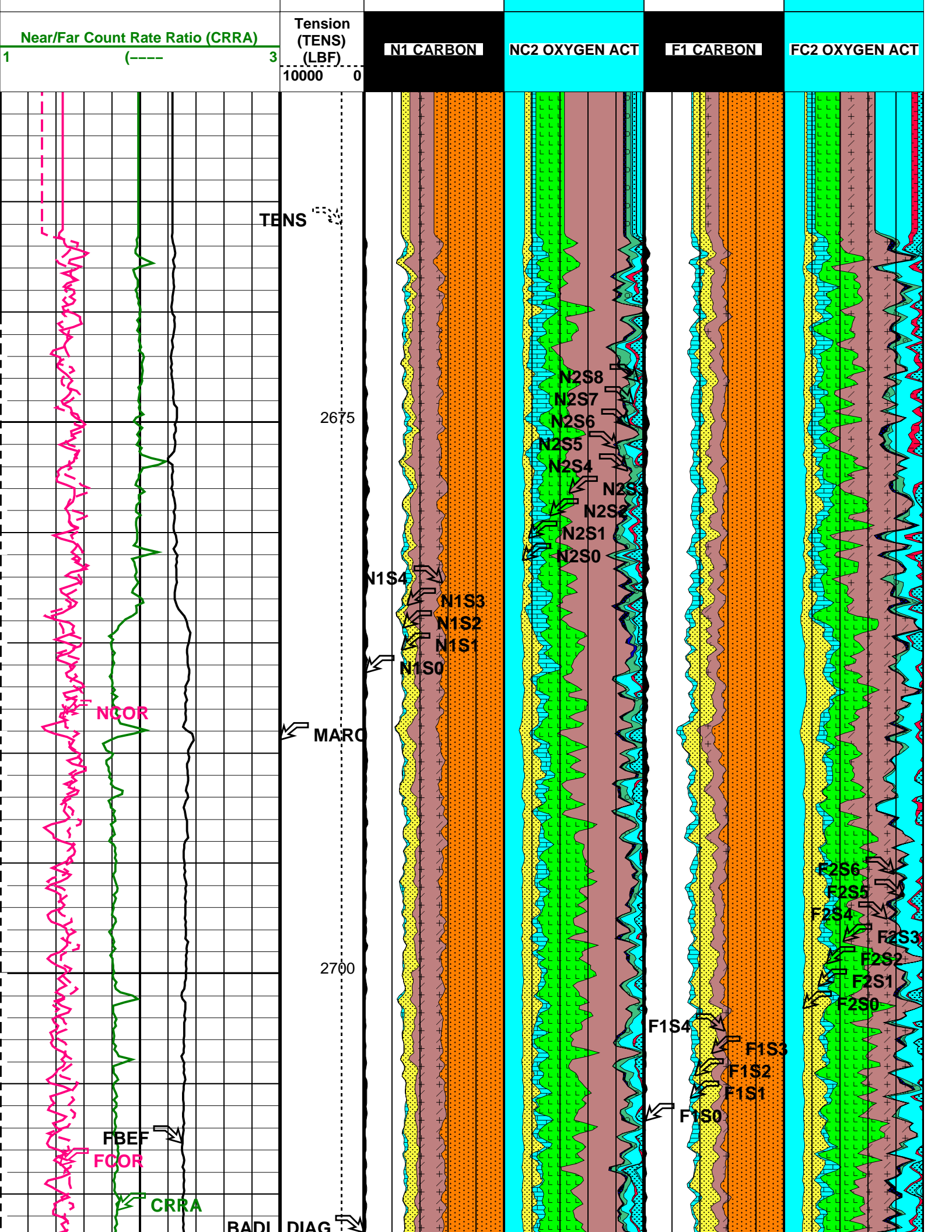
MCM

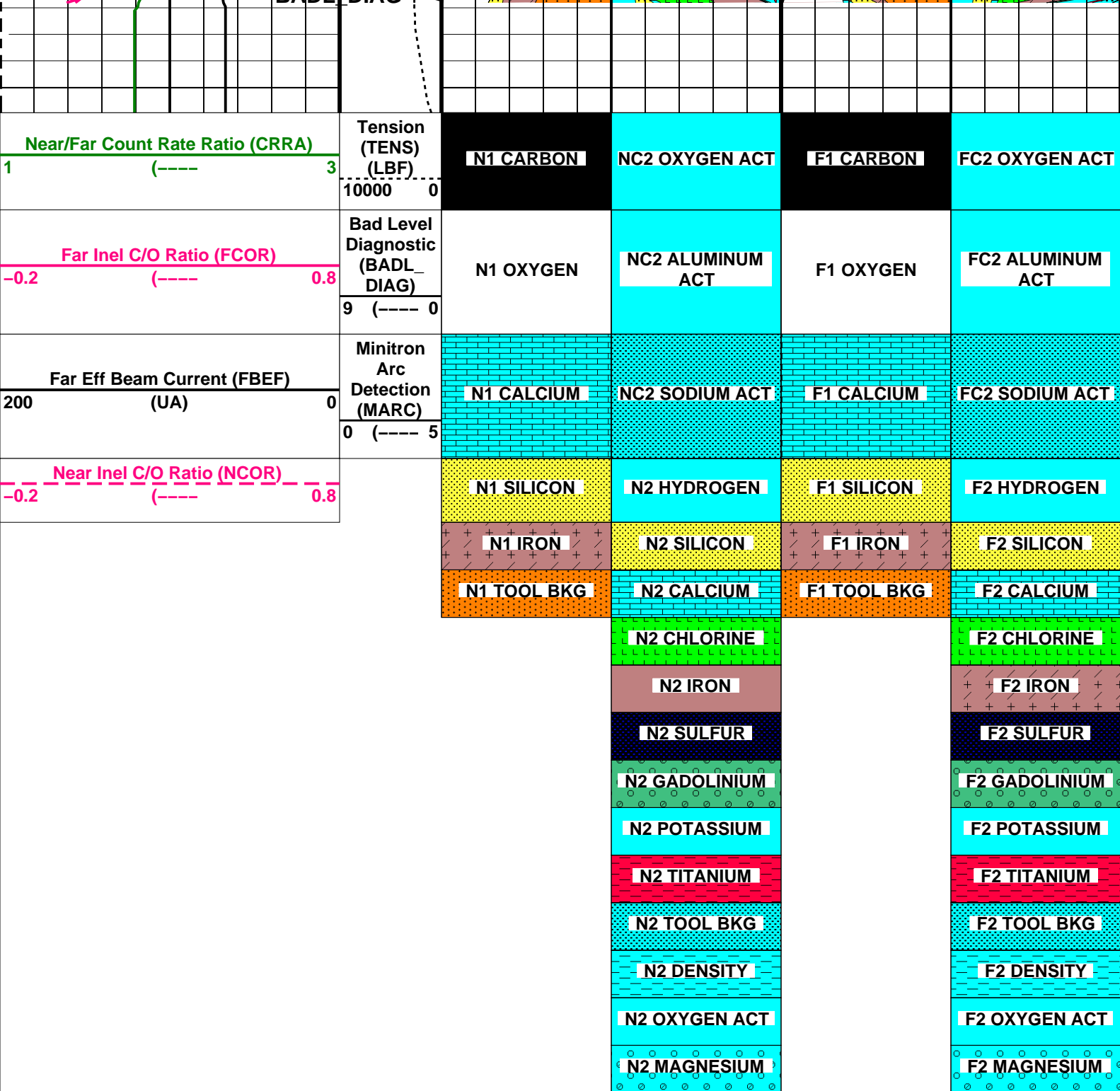
RST-C	SRPC-3546-Q1_2008_OP15	PSPT-A/B	SRPC-3546-Q1_2008_OP15
-------	------------------------	----------	------------------------

PIP SUMMARY

Time Mark Every 60 S







PIP SUMMARY

Time Mark Every 60 S

Parameters

DLIS Name	Description	Value
RST-C: Reservoir Saturation Pro Tool C		
TIER_IC	RST IC Acquisition Mode	0_CO_Yield_and_Spectrolith
DO	System and Miscellaneous	
PP	Depth Offset for Playback	0.5 M
	Playback Processing	NORMAL

Format: RST_YIELDS Vertical Scale: 1:200 Graphics File Created: 19-May-2008 13:40

OP System Version: 15C0-309
MCM

RST-C SRPC-3546-Q1_2008_OP15 PSPT-A/B SRPC-3546-Q1_2008_OP15

Input DLIS Files

DEFAULT RST_PSP_041LUP FN:40 PRODUCER 19-May-2008 12:21 2715.5 M 2664.6 M

Output DLIS Files

DEFAULT RST_PSP_044PUP FN:43 PRODUCER 19-May-2008 13:40

Schlumberger

Pass # 3 RST-C
Carbon Oxygen @ 150 ft/hr

MAXIS Field Log

Company: Esso Australia Pty Ltd. Well: B-18a

Input DLIS Files

DEFAULT RST_PSP_040LUP FN:39 PRODUCER 19-May-2008 11:15 2715.0 M 2664.4 M

Output DLIS Files

DEFAULT RST_PSP_043PUP FN:42 PRODUCER 19-May-2008 13:38 2715.2 M 2659.5 M

OP System Version: 15C0-309
MCM

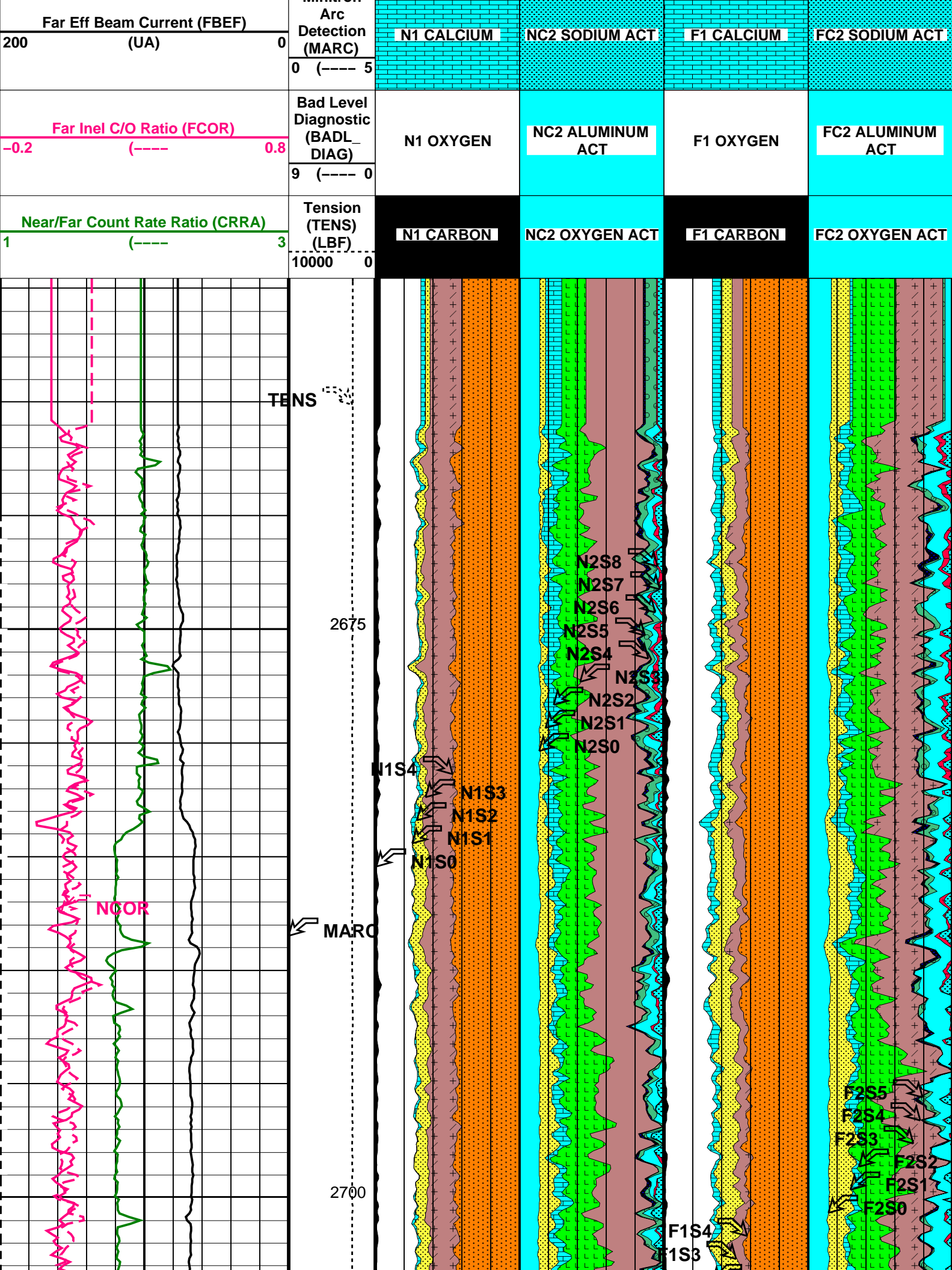
RST-C SRPC-3546-Q1_2008_OP15 PSPT-A/B SRPC-3546-Q1_2008_OP15

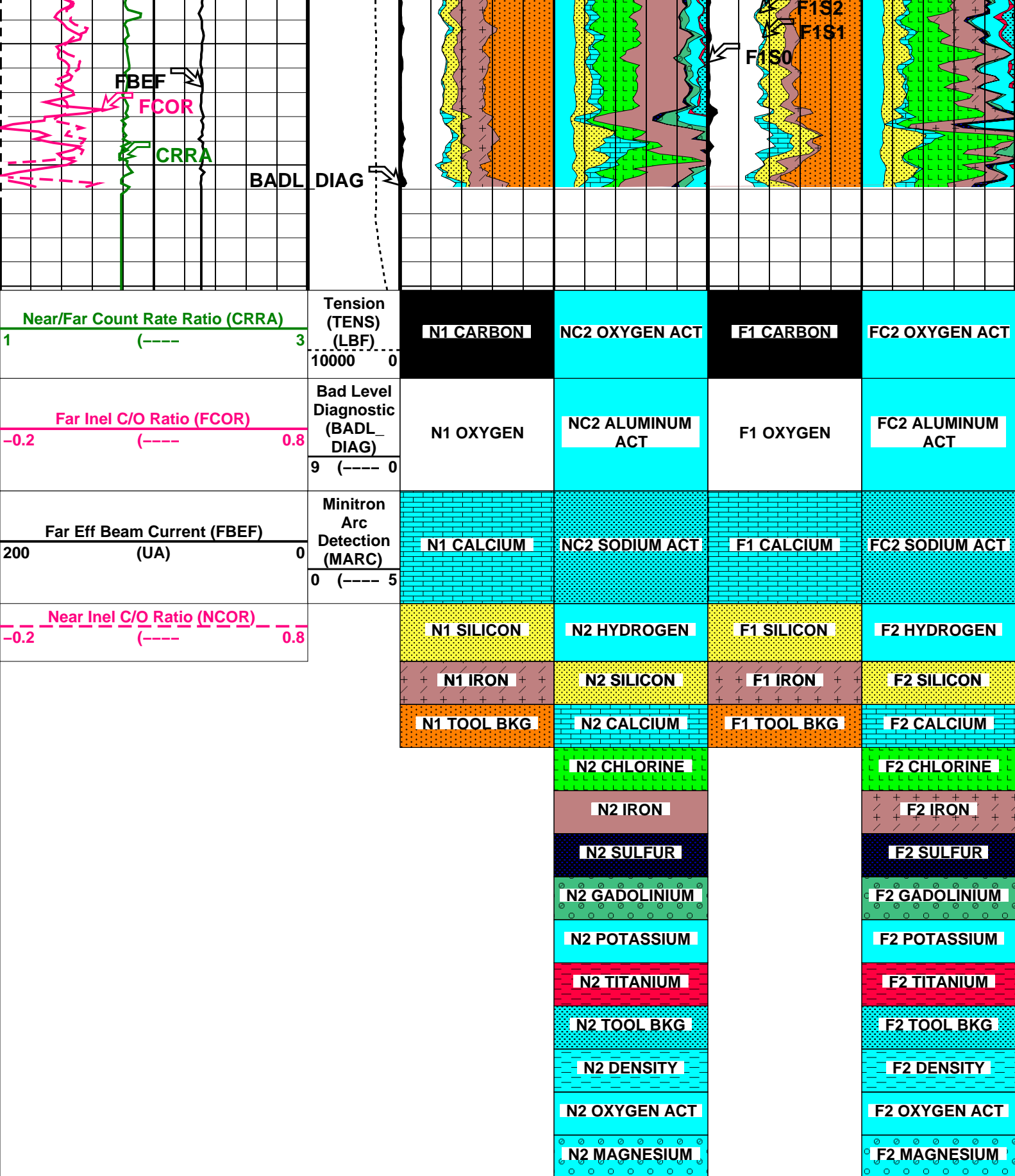
PIP SUMMARY

Time Mark Every 60 S

	N2 MAGNESIUM		F2 MAGNESIUM		
	N2 OXYGEN ACT		F2 OXYGEN ACT		
	N2 DENSITY		F2 DENSITY		
	N2 TOOL BKG		F2 TOOL BKG		
	N2 TITANIUM		F2 TITANIUM		
	N2 POTASSIUM		F2 POTASSIUM		
	N2 GADOLINIUM		F2 GADOLINIUM		
	N2 SULFUR		F2 SULFUR		
	N2 IRON		F2 IRON		
	N2 CHLORINE		F2 CHLORINE		
	N1 TOOL BKG		N2 CALCIUM	F1 TOOL BKG	F2 CALCIUM
	N1 IRON		N2 SILICON	F1 IRON	F2 SILICON
N1 SILICON		N2 HYDROGEN	F1 SILICON	F2 HYDROGEN	

Near Inel C/O Ratio (NCOR)
(-----)
-0.20.8





PIP SUMMARY

Time Mark Every 60 S

Parameters

DLIS Name	Description	Value
-----------	-------------	-------

RST-C: Reservoir Saturation Pro Tool C		
TIER_IC	RST IC Acquisition Mode	

0_CO_Yield_and_Spectrolith

DO
PP

System and Miscellaneous
Depth Offset for Playback
Playback Processing

0.2
NORMAL
M

Format: RST_YIELDS Vertical Scale: 1:200 Graphics File Created: 19-May-2008 13:38

OP System Version: 15C0-309

MCM

RST-C SRPC-3546-Q1_2008_OP15 PSPT-A/B SRPC-3546-Q1_2008_OP15

Input DLIS Files

DEFAULT RST_PSP_040LUP FN:39 PRODUCER 19-May-2008 11:15 2715.0 M 2664.4 M

Output DLIS Files

DEFAULT RST_PSP_043PUP FN:42 PRODUCER 19-May-2008 13:38

Schlumberger

Pass # 2 RST-C
Carbon Oxygen @ 150 ft/hr

MAXIS Field Log

Company: Esso Australia Pty Ltd. Well: B-18a

Input DLIS Files

DEFAULT RST_PSP_039LUP FN:38 PRODUCER 19-May-2008 10:03 2716.8 M 2664.3 M

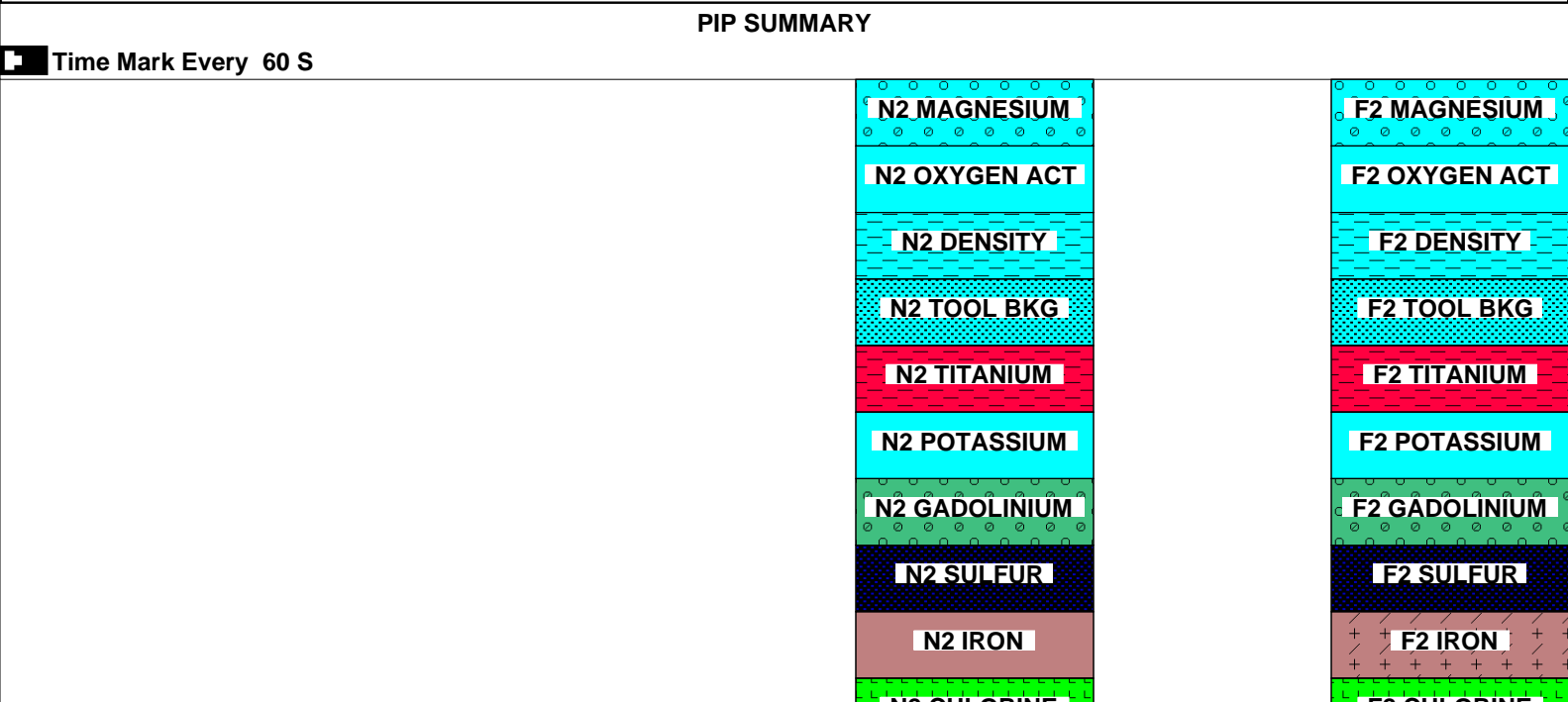
Output DLIS Files

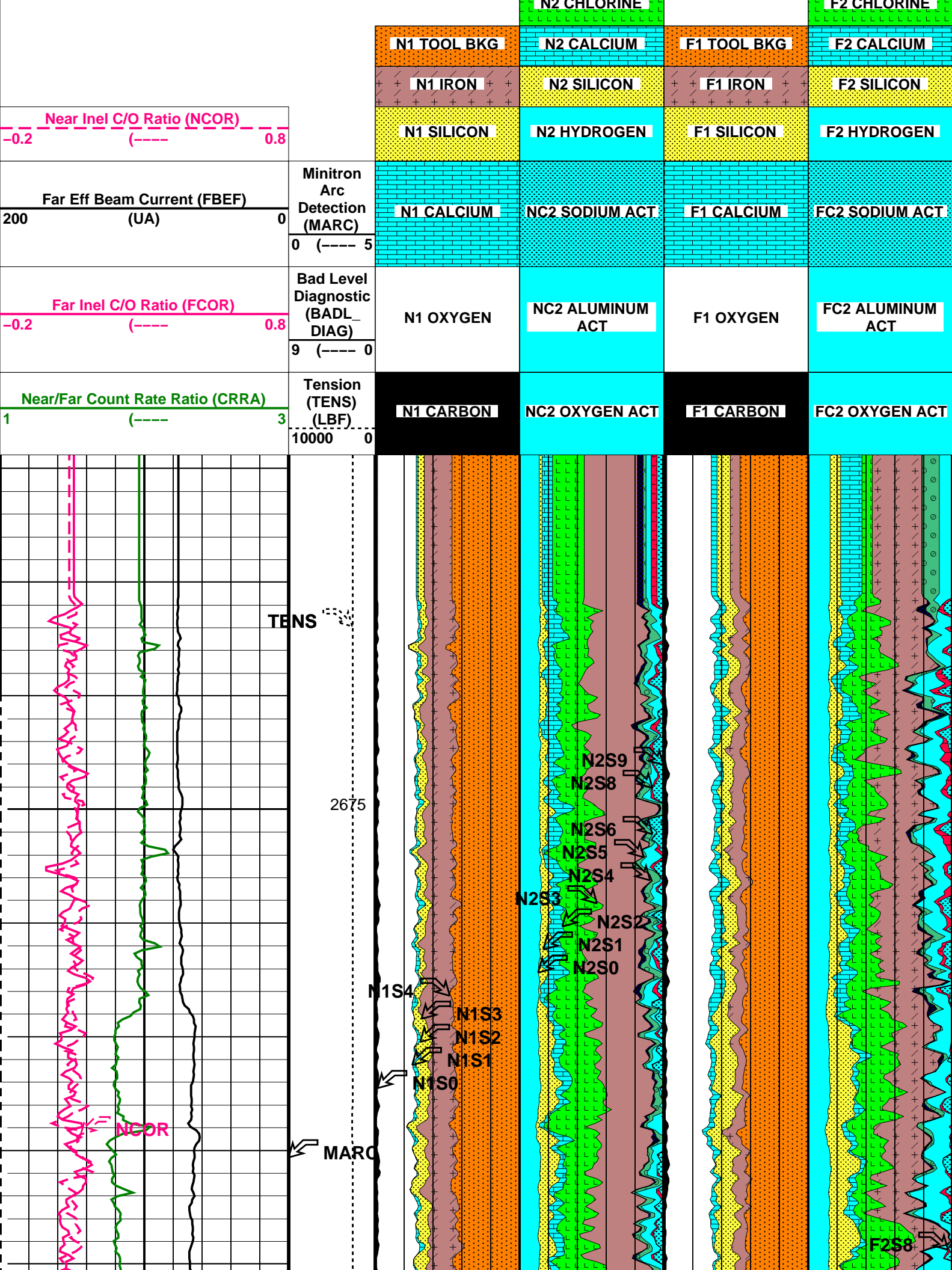
DEFAULT RST_PSP_042PUP FN:41 PRODUCER 19-May-2008 13:37 2717.0 M 2659.4 M

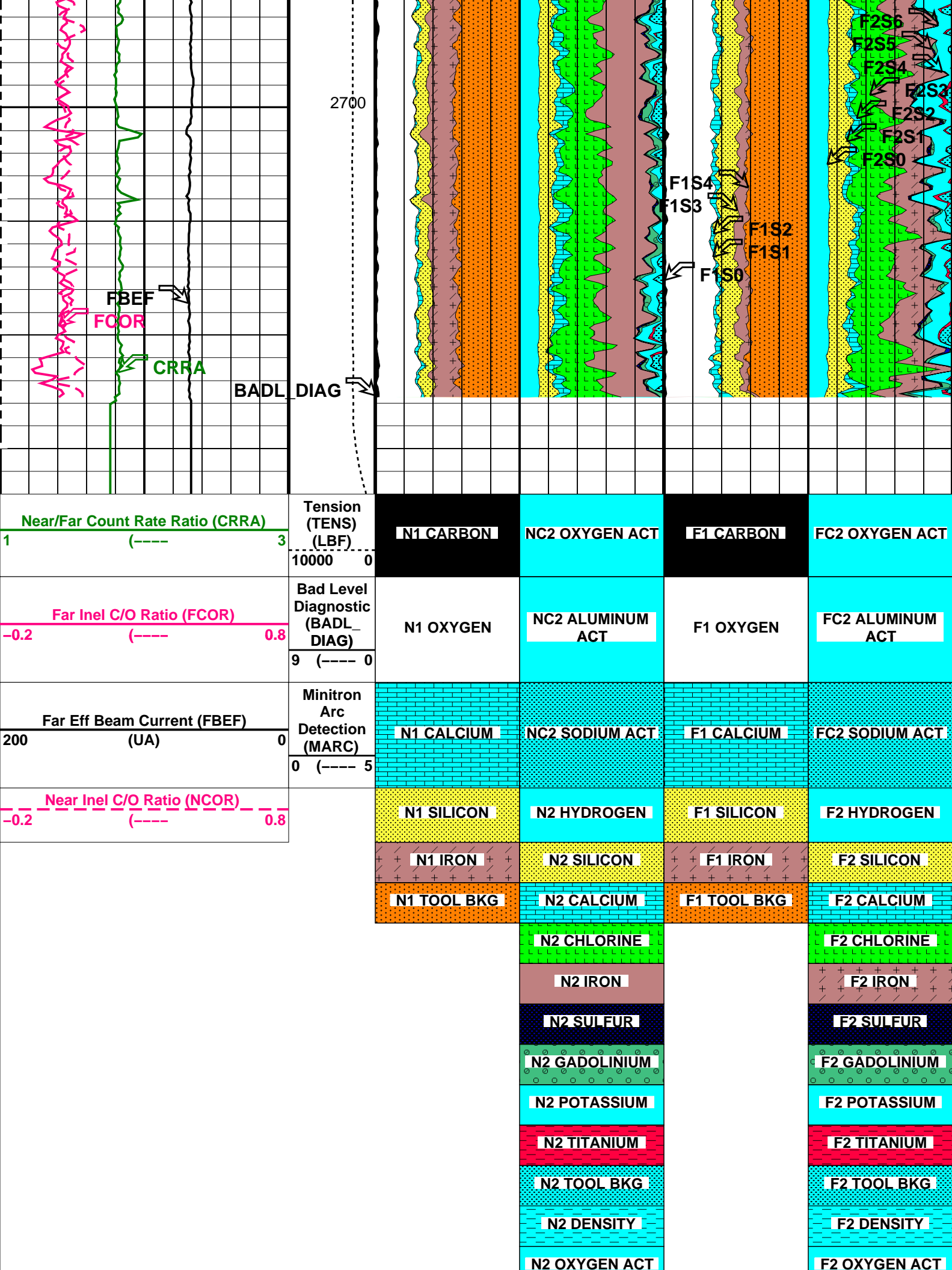
OP System Version: 15C0-309

MCM

RST-C SRPC-3546-Q1_2008_OP15 PSPT-A/B SRPC-3546-Q1_2008_OP15







N2 MAGNESIUM

F2 MAGNESIUM

PIP SUMMARY

Parameters			
DLIS Name	Description	Value	
	RST-C: Reservoir Saturation Pro Tool C		
TIER_IC	RST IC Acquisition Mode	0_CO_Yield_and_Spectrolith	
	System and Miscellaneous		
DO	Depth Offset for Playback	0.1	M
PP	Playback Processing	NORMAL	

DLIS Name	Description	Value
-----------	-------------	-------

RST-C: Reservoir Saturation Pro Tool C			
TIER_IC	RST IC Acquisition Mode	0_CO_Yield_and_Spectrolith	
System and Miscellaneous			
DO	Depth Offset for Playback	0.1	M
PP	Playback Processing	NORMAL	

Format: RST_YIELDS Vertical Scale: 1:200 Graphics File Created: 19-May-2008 13:37

<p align="center">OP System Version: 15C0-309</p> <p align="center">MCM</p>			
RST-C	SRPC-3546-Q1_2008_OP15	PSPT-A/B	SRPC-3546-Q1_2008_OP15

MCM

RST-C SRPC-3546-Q1 2008 OP15 PSPT-A/B SRPC-3546-Q1 2008 OP15


Input DLIS Files						
DEFAULT	RST_PSP_039LUP	FN:38	PRODUCER	19-May-2008 10:03	2716.8 M	2664.3 M

DEFAULT	RST_PSP_039LUP	FN:38	PRODUCER	19-May-2008 10:03	2716.8 M	2664.3 M
---------	----------------	-------	----------	-------------------	----------	----------

Output DLIS Files				
DEFAULT	RST_PSP_042PUP	FN:41	PRODUCER	19-May-2008 13:37

DEFAULT RST_PSP_042PUP FN:41 PRODUCER 19-May-2008 13:37

Pass # 1 RST-C
Carbon Oxygen @ 150 ft/hr



Pass # 1 RST-C
Carbon Oxygen @ 150 ft/hr

MAXIS Field Log

Company: Esso Australia Pty Ltd. Well: B-18a

Well: B-18a

Output DLIS Files						
DEFAULT	RST_PSP_038LUP	FN:37	PRODUCER	19-May-2008 08:55	2717.3 M	2665.8 M

DEFAULT	RST_PSP_038LUP	FN:37	PRODUCER	19-May-2008 08:55	2717.3 M	2665.8 M
---------	----------------	-------	----------	-------------------	----------	----------

<p align="center">OP System Version: 15C0-309</p> <p align="center">MCM</p>			
RST-C	SRPC-3546-Q1_2008_OP15	PSPT-A/B	SRPC-3546-Q1_2008_OP15

MCM

RST-C SRPC-3546-Q1 2008 OP15 PSPT-A/B SRPC-3546-Q1 2008 OP15

PIP SUMMARY

Time Mark Every 60 S

N2 MAGNESIUM

F2 MAGNESIUM

N2 OXYGEN ACT

F2 OXYGEN ACT

N2 DENSITY

F2 DENSITY

N2 TOOL BKG

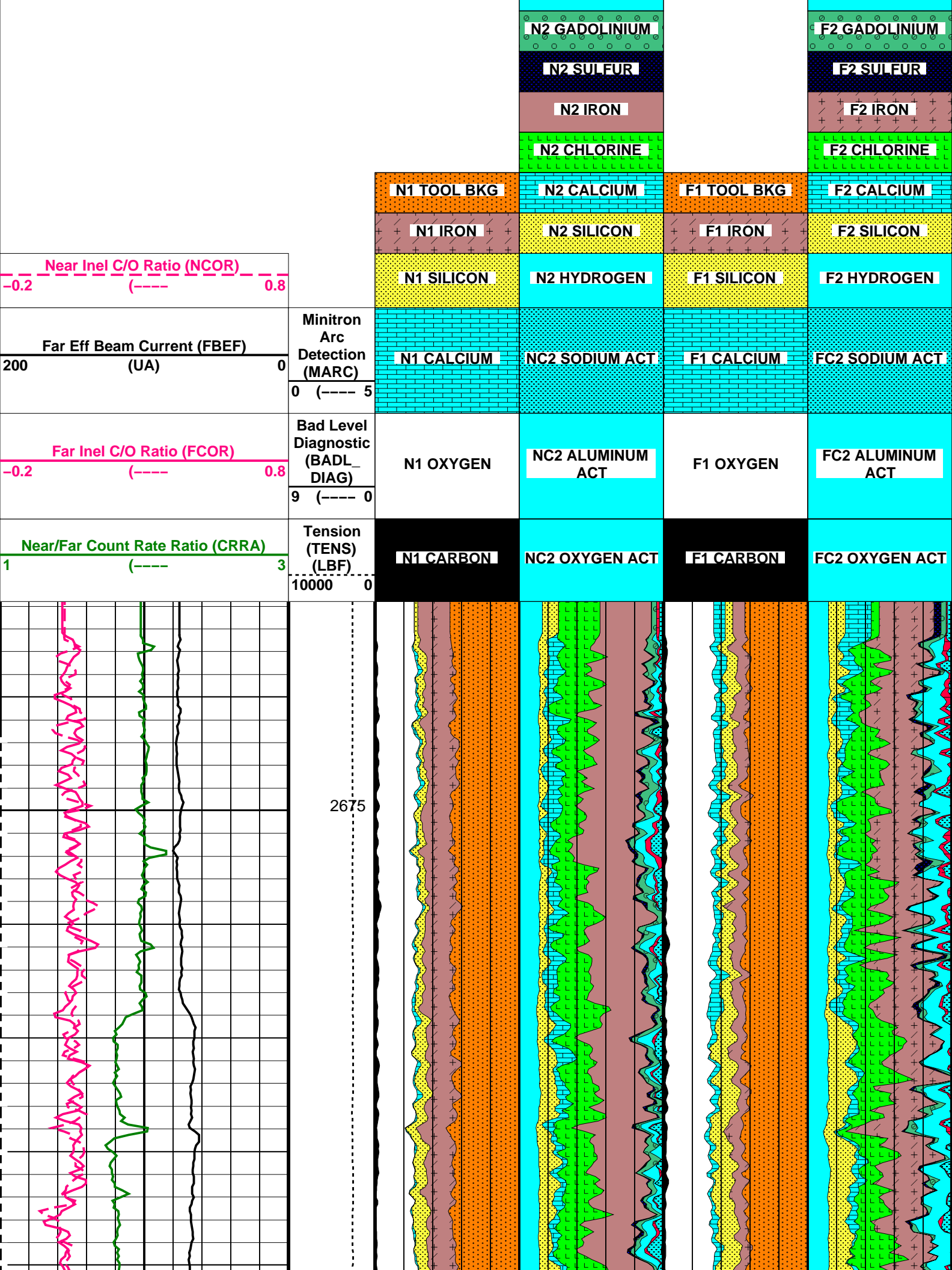
F2 TOOL BKG

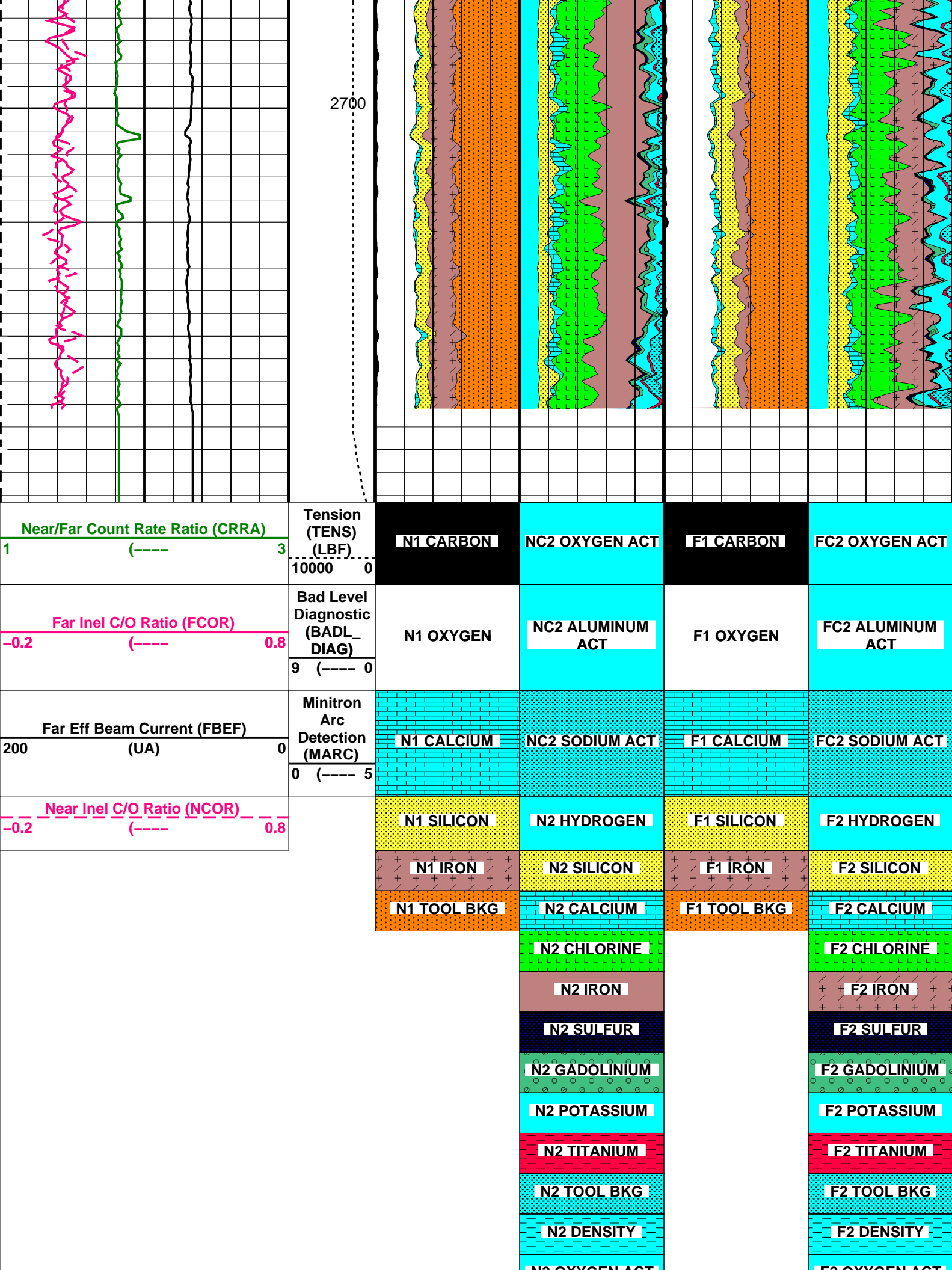
N2 TITANIUM

F2 TITANIUM

N2 POTASSIUM

F2 POTASSIUM





Near/Far Count Rate Ratio (CRRA)

1 (----) 3

Far Inel C/O Ratio (FCOR)

-0.2 (----) 0.8

Far Eff Beam Current (FBEF)

200 (UA) 0

Near Inel C/O Ratio (NCOR)

-0.2 (----) 0.8

Tension
(TENS)
(LBF)

10000 0

Bad Level
Diagnostic
(BADL_
DIAG)

9 (----) 0

Minitron
Arc
Detection
(MARC)

0 (----) 5

N1 CARBON

NC2 OXYGEN ACT

F1 CARBON

FC2 OXYGEN ACT

N1 OXYGEN

NC2 ALUMINUM
ACT

F1 OXYGEN

FC2 ALUMINUM
ACT

N1 CALCIUM

NC2 SODIUM ACT

F1 CALCIUM

FC2 SODIUM ACT

N1 SILICON

N2 HYDROGEN

F1 SILICON

F2 HYDROGEN

N1 IRON

N2 SILICON

F1 IRON

F2 SILICON

N1 TOOL BKG

N2 CALCIUM

F1 TOOL BKG

F2 CALCIUM

N2 CHLORINE

F2 CHLORINE

N2 IRON

F2 IRON

N2 SULFUR

F2 SULFUR

N2 GADOLINIUM

F2 GADOLINIUM

N2 POTASSIUM

F2 POTASSIUM

N2 TITANIUM

F2 TITANIUM

N2 TOOL BKG

F2 TOOL BKG

N2 DENSITY

F2 DENSITY

N2 OXYGEN ACT


F2 OXYGEN ACT

Parameters		
DLIS Name	Description	Value
RST-C: Reservoir Saturation Pro Tool C		
TIER_IC	RST IC Acquisition Mode	0_CO_Yield_and_Spectrolith
Format: RST_YIELDS	Vertical Scale: 1:200	Graphics File Created: 19-May-2008 08:55

OP System Version: 15C0-309			
MCM			
RST-C	SRPC-3546-Q1_2008_OP15	PSPT-A/B	SRPC-3546-Q1_2008_OP15

Output DLIS Files			
DEFAULT	RST_PSP_038LUP	FN:37	PRODUCER 19-May-2008 08:55

Schlumberger Job Event Summary				
	Time	Elapsed Time	Depth (M)	File
Simulated Log	17-May-2008 16:33	000:24		RST_PSP_022LUP
Log Pass (down)	17-May-2008 16:58	000:43	-2.3 - 2668.1	RST_PSP_023LDP
Log Pass (down)	17-May-2008 17:44	000:08	2669.0 - 2697.6	RST_PSP_024LDP
Log Pass (up)	17-May-2008 17:53	000:05	2701.4 - 2647.2	RST_PSP_025LUP
Log Pass (down)	17-May-2008 17:59	000:02	2647.8 - 2697.0	RST_PSP_026LDP
Log Pass (down)	17-May-2008 18:04	000:29	2662.4 - 2744.0	RST_PSP_027LDP
Log Pass (up)	17-May-2008 18:37	000:20	2735.0 - 2661.5	RST_PSP_028LUP
Log Pass (up)	17-May-2008 19:01	000:19	2746.7 - 2655.0	RST_PSP_029LUP
Log Pass (up)	17-May-2008 19:36	000:29	2084.5 - -3.7	RST_PSP_032LUP

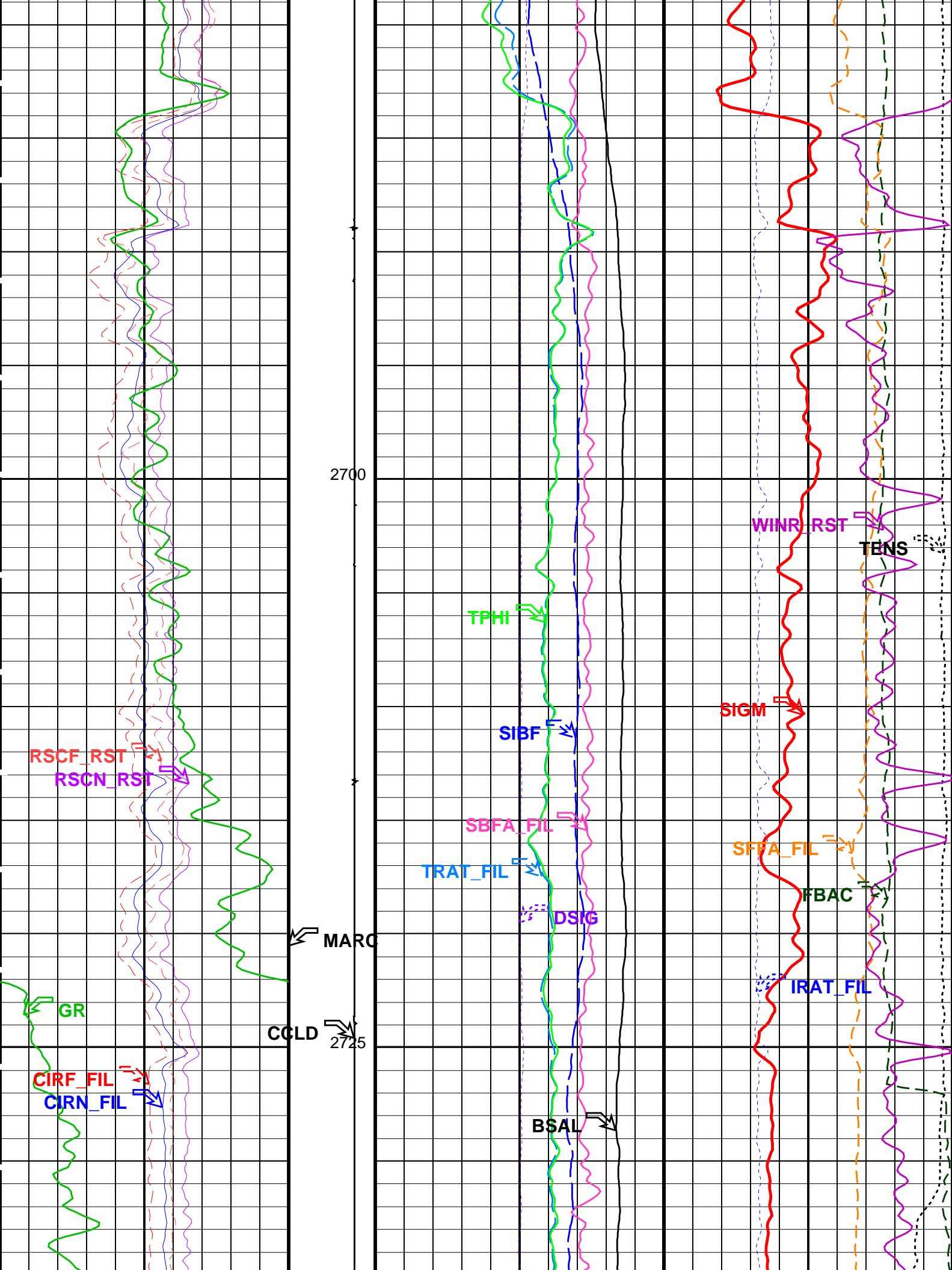


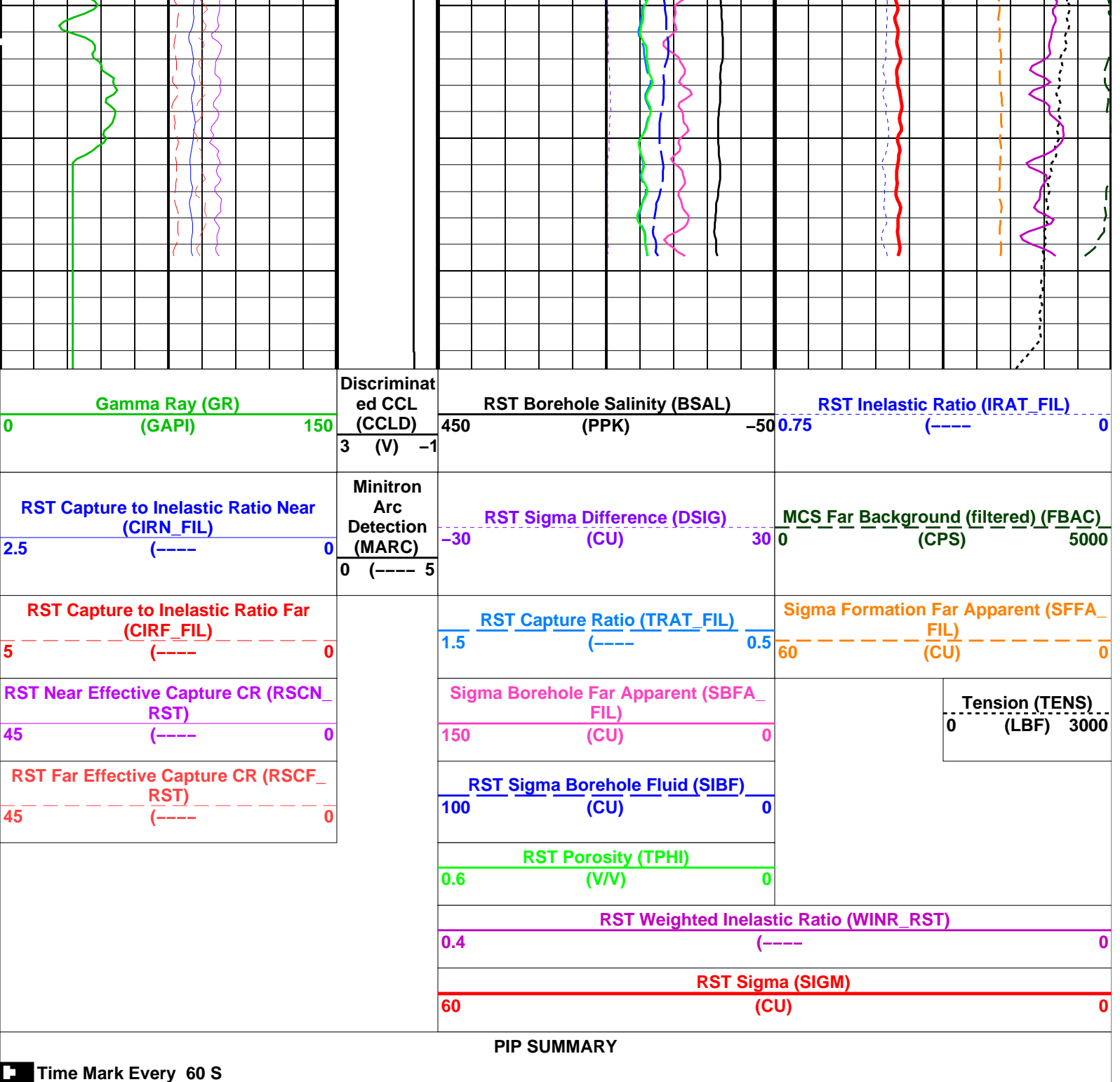
Pass # 2 RST-C
Sigma @ 900 ft/hr

MAXIS Field Log

Input DLIS Files					
DEFAULT	RST_PSP_029LUP	FN:28	PRODUCER	17-May-2008 19:01	2746.7 M 2655.0 M
Output DLIS Files					
DEFAULT	RST_PSP_031PUP	FN:30	PRODUCER	17-May-2008 19:27	2748.7 M 2651.9 M

Time Mark Every 60 S





Parameters		
DLIS Name	Description	Value
RST-C: Reservoir Saturation Pro Tool C		
AIRB	RST Air Borehole	No
BHS	Borehole Status	CASED
BSALOPT	RST Borehole Salinity Option	Unknown
BSFL	RST Borehole Salinity Filter Length	51
DFPC	RST Depth Filter Processing Constant	One
DFPC_TDTL	RST Depth Filter Processing Constant (TDT-like)	Two
MATR	Rock Matrix for Neutron Porosity Corrections	SANDSTONE
NORM_IRAT_RST	RST Normalized Inelastic Ratio	0.48
NORM_SIGM_RST	RST Normalized Sigma	30 CU
RGAI	Near/Far Gain Calibration Ratio	1
TIER_SIGM	RST Sigma Acquisition Mode	0_RST_Sigma
PSPT-A/B: Production Services Logging Platform		
BHS	Borehole Status	CASED
MATR	Rock Matrix for Neutron Porosity Corrections	SANDSTONE
System and Miscellaneous		
BS	Bit Size	6.500 IN

BSAL	Borehole Salinity	-50000.00	PPM
CSIZ	Current Casing Size	5.000	IN
CWEI	Casing Weight	15.00	LB/F
DO	Depth Offset for Playback	2.0	M
PP	Playback Processing	NORMAL	

Format: RST_SIG_ANSW

Vertical Scale: 1:200

Graphics File Created: 17-May-2008 19:27

OP System Version: 15C0-309						
MCM						
RST-C	SRPC-3546-Q1_2008_OP15	PSPT-A/B		SRPC-3546-Q1_2008_OP15		
Input DLIS Files						
DEFAULT	RST_PSP_029LUP	FN:28	PRODUCER	17-May-2008 19:01	2746.7 M	2655.0 M
Output DLIS Files						
DEFAULT	RST_PSP_031PUP	FN:30	PRODUCER	17-May-2008 19:27		

Schlumberger

Pass # 1 RST-C

Sigma @ 900 ft/hr

MAXIS Field Log

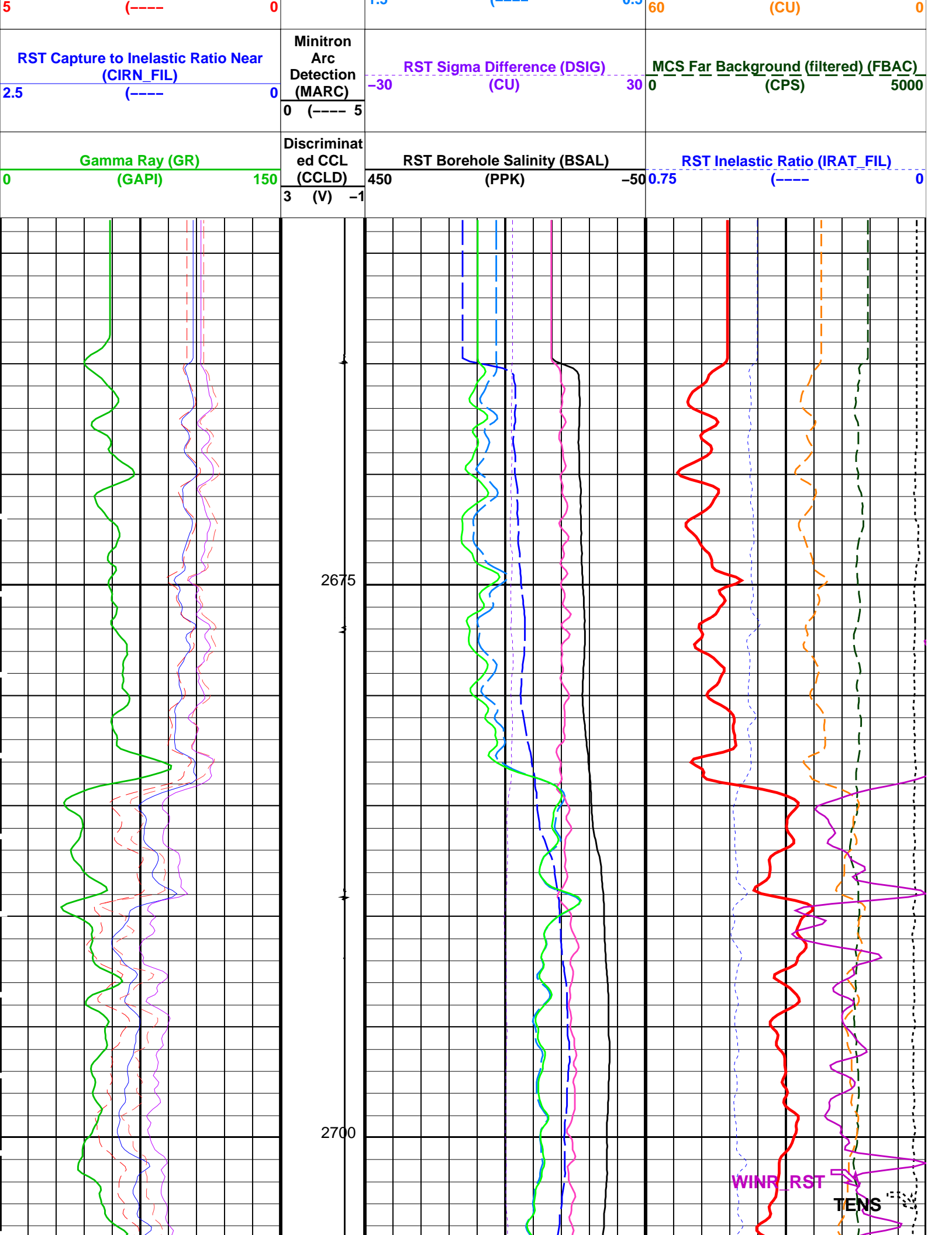
Company: Esso Australia Pty Ltd.

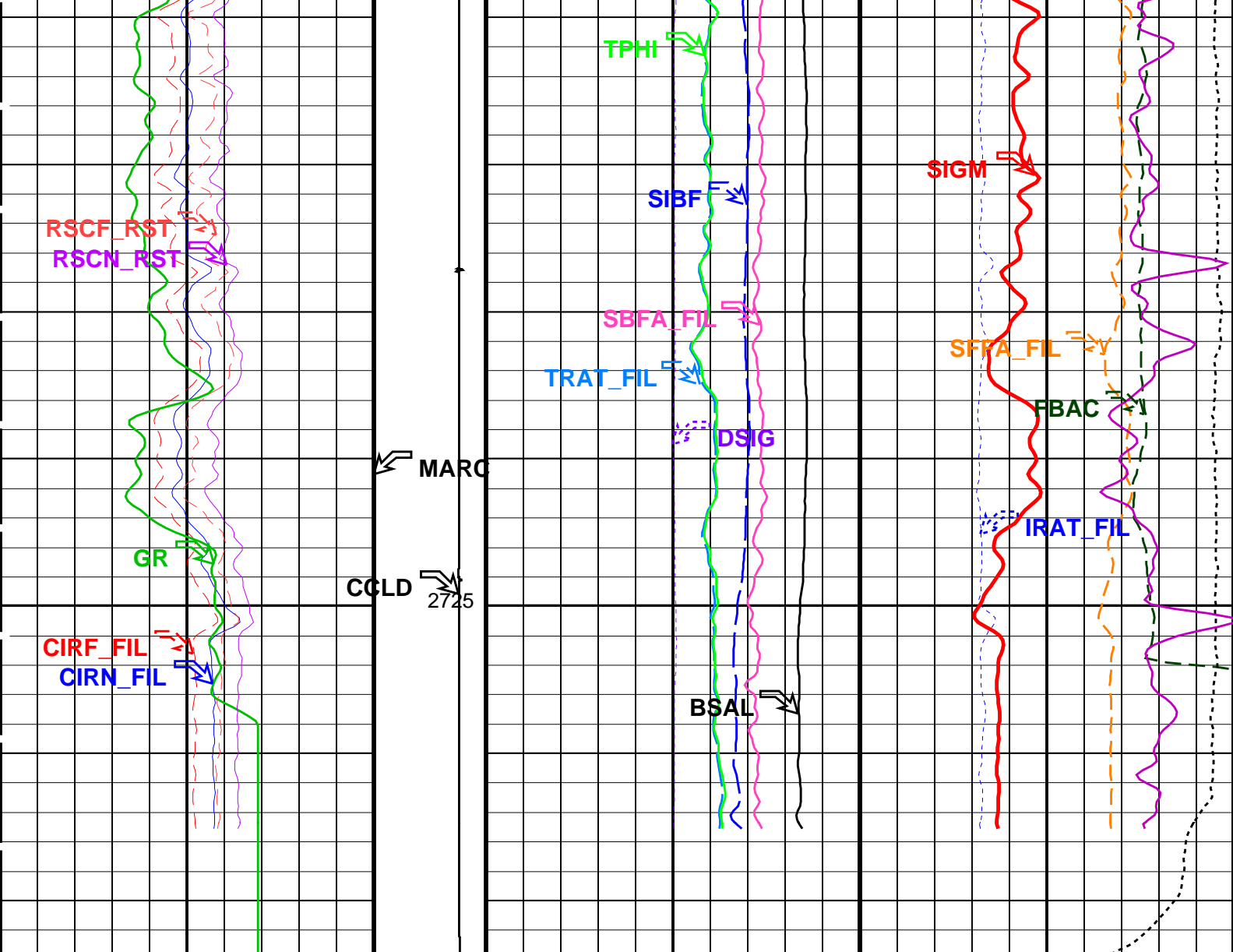
Well: A-18a

Input DLIS Files					
DEFAULT	RST_PSP_028LUP	FN:27	PRODUCER	17-May-2008 18:37	2735.0 M 2661.5 M
Output DLIS Files					
DEFAULT	RST_PSP_030PUP	FN:29	PRODUCER	17-May-2008 19:22	2736.8 M 2658.3 M

OP System Version: 15C0-309					
MCM					
RST-C	SRPC-3546-Q1_2008_OP15	PSPT-A/B	SRPC-3546-Q1_2008_OP15		

PIP SUMMARY					
Time Mark Every 60 S					
			RST Sigma (SIGM)		
			60	(CU)	0
			RST Weighted Inelastic Ratio (WINR_RST)		
			0.4	(----	0
			RST Porosity (TPHI)		
<div>RST Far Effective Capture CR (RSCF_RST)</div> <div>45 (-----) 0</div> <div>RST Near Effective Capture CR (RSCN_RST)</div> <div>45 (-----) 0</div> <div>RST Capture to Inelastic Ratio Far (CIRF_FIL)</div> <div>1.5 (-----) 0.5</div>			0.6	(V/V)	0
			RST Sigma Borehole Fluid (SIBF)		
			100	(CU)	0
			Sigma Borehole Far Apparent (SBFA_FIL)		
			150	(CU)	0
			Sigma Formation Far Apparent (SFFA_FIL)		
			1.5	(-----) 0.5	
			Tension (TENS)		
			0	(LBF)	3000





<div>Gamma Ray (GR) (GAPI)</div> <div>0150</div>	<div>Discriminat ed CCL (CCLD)</div> <div>3 (V) -1</div>	<div>RST Borehole Salinity (BSAL) (PPK)</div> <div>450-50</div>	<div>RST Inelastic Ratio (IRAT_FIL) (----</div> <div>0.750</div>
<div>RST Capture to Inelastic Ratio Near (CIRN_FIL)</div> <div>2.5 (----) 0</div>	<div>Minitron Arc Detection (MARC)</div> <div>0 (---- 5</div>	<div>RST Sigma Difference (DSIG) (CU)</div> <div>-3030</div>	<div>MCS Far Background (filtered) (FBAC) (CPS)</div> <div>05000</div>
<div>RST Capture to Inelastic Ratio Far (CIRF_FIL)</div> <div>5 (----) 0</div>		<div>RST Capture Ratio (TRAT_FIL) (----)</div> <div>1.50.5</div>	<div>Sigma Formation Far Apparent (SFFA_FIL) (CU)</div> <div>600</div>
<div>RST Near Effective Capture CR (RSCN_RST)</div> <div>45 (----) 0</div>		<div>Sigma Borehole Far Apparent (SBFA_FIL) (CU)</div> <div>1500</div>	<div>Tension (TENS) (LBF)</div> <div>03000</div>
<div>RST Far Effective Capture CR (RSCF_RST)</div> <div>45 (----) 0</div>		<div>RST Sigma Borehole Fluid (SIBF) (CU)</div> <div>1000</div>	
		<div>RST Porosity (TPHI) (V/V)</div> <div>0.60</div>	
		<div>RST Weighted Inelastic Ratio (WINR_RST) (----</div> <div>0.40</div>	
		<div>RST Sigma (SIGM)</div>	

Time Mark Every 60 S

DLIS Name	Description	Value
-----------	-------------	-------

RST-C: Reservoir Saturation Pro Tool C				
AIRB	RST Air Borehole		No	
BHS	Borehole Status		CASED	
BSALOPT	RST Borehole Salinity Option		Unknown	
BSFL	RST Borehole Salinity Filter Length		51	
DFPC	RST Depth Filter Processing Constant		One	
DFPC_TDTL	RST Depth Filter Processing Constant (TDT-like)		Two	
MATR	Rock Matrix for Neutron Porosity Corrections		SANDSTONE	
NORM_IRAT_RST	RST Normalized Inelastic Ratio		0.48	
NORM_SIGM_RST	RST Normalized Sigma		30	CU
RGAI	Near/Far Gain Calibration Ratio		1	
TIER_SIGM	RST Sigma Acquisition Mode		0_RST_Sigma	
PSPT-A/B: Production Services Logging Platform				
BHS	Borehole Status		CASED	
MATR	Rock Matrix for Neutron Porosity Corrections		SANDSTONE	
System and Miscellaneous				
BS	Bit Size		6.500	IN
BSAL	Borehole Salinity		-50000.00	PPM
CSIZ	Current Casing Size		5.000	IN
CWEI	Casing Weight		15.00	LB/F
DO	Depth Offset for Playback		1.9	M
PP	Playback Processing		NORMAL	

Format: RST_SIG_ANSW Vertical Scale: 1:200 Graphics File Created: 17-May-2008 19:22

MCM

RST-C SRPC-3546-Q1 2008 OP15 PSPT-A/B SRPC-3546-Q1 2008 OP15

DEFAULT	RST_PSP_028LUP	FN:27	PRODUCER	17-May-2008 18:37	2735.0 M	2661.5 M
---------	----------------	-------	----------	-------------------	----------	----------

DEFAULT RST_PSP_030PUP FN:29 PRODUCER 17-May-2008 19:22



MAXIS Field Log

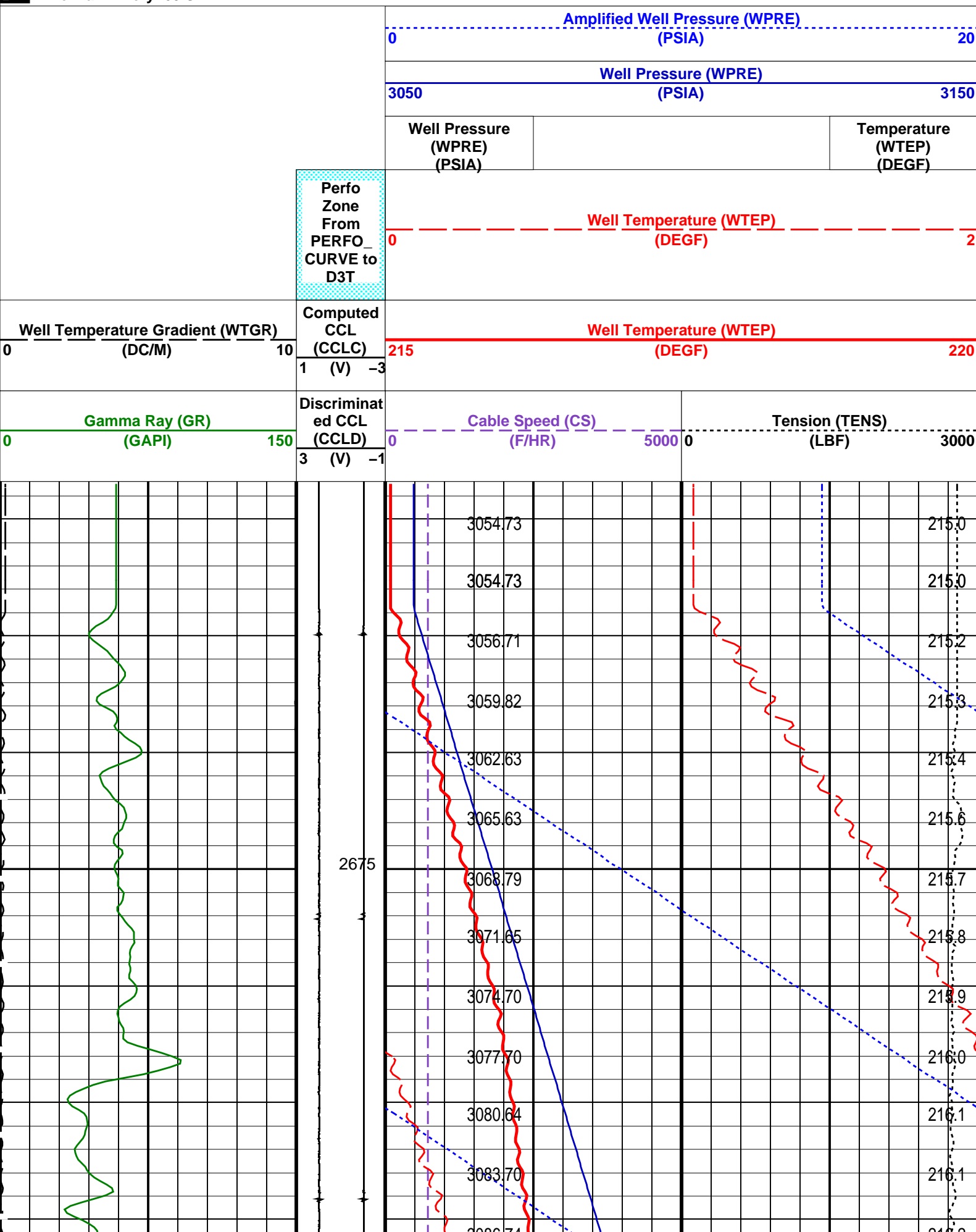
Well: A-18a

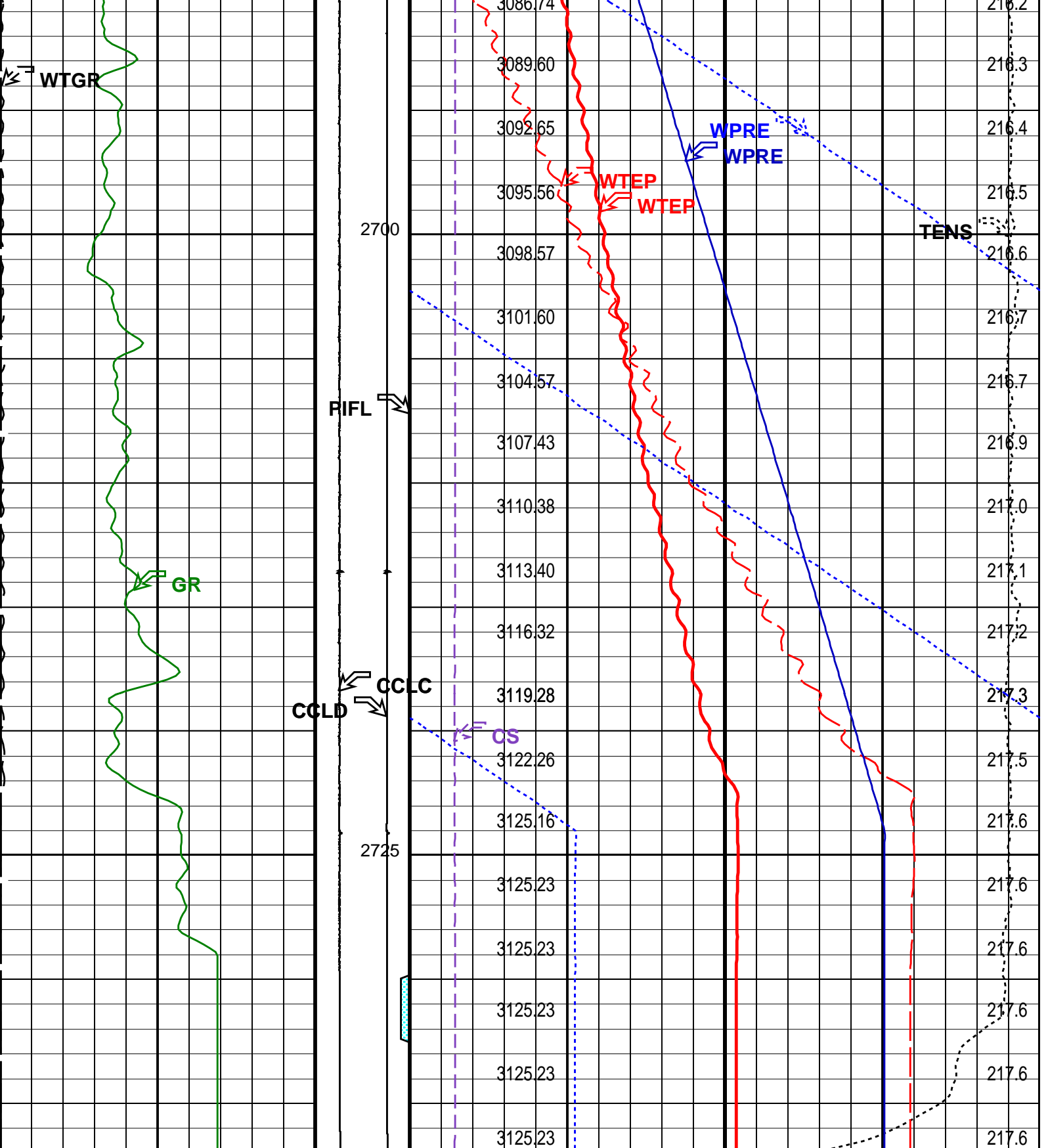
DEFAULT	RST_PSP_028LUP	FN:27	PRODUCER	17-May-2008 18:37	2735.0 M	2661.5 M
---------	----------------	-------	----------	-------------------	----------	----------

DEFAULT	RST PSP 030PUP	FN:29	PRODUCER	17-May-2008 19:22	2736.8 M	2658.3 M
---------	----------------	-------	----------	-------------------	----------	----------

MCM

Time Mark Every 60 S





Gamma Ray (GR) (GAPI)	Discriminat ed CCL (CCLD)	Cable Speed (CS) (F/HR)	Tension (TENS) (LBF)
0 150	3 (V) -1	0 5000	0 3000
Well Temperature Gradient (WTGR) (DC/M)	Computed CCL (CCLC)	Well Temperature (WTEP) (DEGF)	
0 10	1 (V) -3	215	220
Perfo Zone			

From PERFO_ CURVE to D3T	Well Temperature (WTEP) (DEGF)		
	0 2		
	Well Pressure (WPRE) (PSIA)		Temperature (WTEP) (DEGF)
	Well Pressure (WPRE)		
	3050 (PSIA) 3150		
	Amplified Well Pressure (WPRE) (PSIA)		
	0 20		

PIP SUMMARY				
Time Mark Every 60 S				
Format: PSP_1		Vertical Scale: 1:200		Graphics File Created: 17-May-2008 19:22

OP System Version: 15C0-309				
MCM				
RST-C	SRPC-3546-Q1_2008_OP15	PSPT-A/B	SRPC-3546-Q1_2008_OP15	

Parameters							
DLIS Name		Description			Value		
System and Miscellaneous							
DO		Depth Offset for Playback			1.9	M	
PP		Playback Processing			NORMAL		
Input DLIS Files							
DEFAULT	RST_PSP_028LUP	FN:27	PRODUCER	17-May-2008 18:37	2735.0 M		2661.5 M
Output DLIS Files							
DEFAULT	RST_PSP_030PUP	FN:29	PRODUCER	17-May-2008 19:22			

Schlumberger		Job Event Summary
MAXIS Field Log		

Company:	Esso Australia Pty Ltd.	Schlumberger
Well:	B-18a	
Field:	Kingfish B	
Rig :	Prod4 / Crane	
Country:	Australia	
RST-C Sigma & Carbon Oxygen Survey		