

Company: Esso Australia Pty Ltd.

Well: A-26  
Field: Bream A  
Rig : Prod4 / Crane Country: Australia

2-1/8" Phased Powerjet Perforation  
4-1/2" MPBT Plug  
Setting Record

Prod4 / Crane	
Field:	Bream A
Location:	Gippsland
Well:	A-26
Company:	Esso Australia Pty Ltd.
LOCATION	
Gippsland	Elev.: K.B. 32.82 m
Basin	G.L. -59 m
Bass Strait	D.F. 32.82 m
Permanent Datum:	M.S.L. _____
Log Measured From:	D.F. _____ 32.8 m above Perm. Datum
Drilling Measured From:	D.F. _____
State : Victoria	Max. Well Deviation 72 deg
	Longitude 147 46'15"E
	Latitude 038 30'04"S

Logging Date	9-May-2008
Run Number	1 thru 5
Depth Driller	4304 m
Schlumberger Depth	4304 m
Bottom Log Interval	4304 m
Top Log Interval	4250 m
Casing Fluid Type	Production Fluids
Salinity	
Density	
Fluid Level	1306 m
BIT/CASING/TUBING STRING	
Bit Size	8.500 in
From	4148 m
To	4425 m
Casing/Tubing Size	4.500 in
Weight	11.6 lbm/ft
Grade	L-80
From	3501.45 m
To	4425 m
Maximum Recorded Temperatures	207 degF
Logger On Bottom	9-May-2008
Unit Number	889
Recorded By	G Wright & S Gilbert
Witnessed By	B White & J Dean

Run 1

PVT DATA

Oil Density	
Water Salinity	
Gas Gravity	
Bo	
Bw	
1/Bg	
Bubble Point Pressure	
Bubble Point Temperature	
Solution GOR	
Maximum Deviation	72 deg

CEMENTING DATA

Primary/Squeeze	Primary
Casing String No	
Lead Cement Type	
Volume	
Density	
Water Loss	
Additives	
Tail Cement Type	
Volume	
Density	
Water Loss	
Additives	

Expected Cement Top

Logging Date	
Run Number	
Depth Driller	
Schlumberger Depth	
Bottom Log Interval	
Top Log Interval	
Casing Fluid Type	
Salinity	
Density	
Fluid Level	
BIT/CASING/TUBING STRING	
Bit Size	
From	
To	
Casing/Tubing Size	
Weight	
Grade	
From	
To	
Maximum Recorded Temperatures	
Logger On Bottom	
Unit Number	
Recorded By	
Witnessed By	

## DEPTH SUMMARY LISTING

Date Created: 7-MAY-2008 7:35:19

### Depth System Equipment

Depth Measuring Device		Tension Device		Logging Cable	
Type:	IDW-EB	Type:	PSDS/OSDS	Type:	2-32ZT
Serial Number:	6373	Serial Number:	325357	Serial Number:	24425
Calibration Date:	4-Jan-2007	Calibration Date:	30-Apr-2008	Length:	6409.94 M
Calibrator Serial Number:	9	Calibrator Serial Number:	1174	Conveyance Method: Wireline Rig Type: Rigless	
Calibration Cable Type:	2-23ZT	Calibration Gain:	0.92		
Wheel Correction 1:	-2	Calibration Offset:	199.00		
Wheel Correction 2:	-4				

### Depth Control Parameters

Log Sequence:	Subsequent Log In the Well
Reference Log Name:	ExxonMobil Correlation Log
Reference Log Run Number:	
Reference Log Date:	06-Feb-2007

### Depth Control Remarks

1. IDW used as primary depth control.
2. Z-chart used as secondary backup

#### DISCLAIMER

THE USE OF AND RELIANCE UPON THIS RECORDED-DATA BY THE HEREIN NAMED COMPANY (AND ANY OF ITS AFFILIATES, PARTNERS, REPRESENTATIVES, AGENTS, CONSULTANTS AND EMPLOYEES) IS SUBJECT TO THE TERMS AND CONDITIONS AGREED UPON BETWEEN SCHLUMBERGER AND THE COMPANY, INCLUDING: (a) RESTRICTIONS ON USE OF THE RECORDED-DATA; (b) DISCLAIMERS AND WAIVERS OF WARRANTIES AND REPRESENTATIONS REGARDING COMPANY'S USE OF AND RELIANCE UPON THE RECORDED-DATA; AND (c) CUSTOMER'S FULL AND SOLE RESPONSIBILITY FOR ANY INFERENCE DRAWN OR DECISION MADE IN CONNECTION WITH THE USE OF THIS RECORDED-DATA.














OTHER SERVICES1
OS1: None
OS2:
OS3:
OS4:
OS5:
REMARKS: RUN NUMBER 1
Log correlated to ExxonMobil composite supplied with logging program.
Objective: Perforate the interval 4282m to 4287m MDKB using a 5m 2 1/8" 45deg Phased
Powerjet Gun. Set a 4.5" Posiset Plug with Top of Seal @ 4293m MDKB and
Dump approx 1m of Cement on top .
Maximum well deviation = 72 Deg @ 4005m MDKB.
GUN# 1

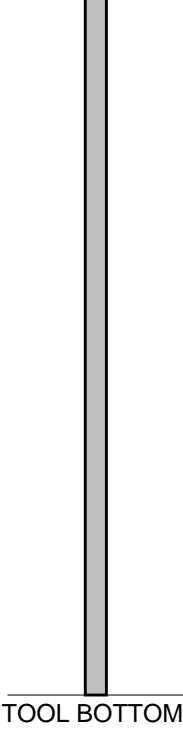
Before Fired	SBHT: 205.6 degf	SBHP: 2595.06 psia
After Shot	SBHT: 205.1 degf	SBHP: 2594.70 psia
Top Shot @ 4282m MDKB		
CCL to Top Shot = 3.5m		
CCL Stop Depth = 4278.5m MDKB		
PLUG # 1		
Top of Seal @ 4293m MDKB		
CCL to Top of Seal = 7m		
CCL stop Depth = 4286m MDKB		
CCL to Bottom of Dump Bailer = 7m		
Crew : J Light, A Mc Lellan, N Simmons B Taylor		

<div> <div>RUN 1</div> <div> <div>SERVICE ORDER #:</div> <div>PROGRAM VERSION:</div> <div>FLUID LEVEL:</div> </div> <div> <div>AusI08509115</div> <div>15C0-309</div> <div>1306 m</div> </div> </div>					
LOGGED INTERVAL	START	STOP	LOGGED INTERVAL	START	STOP

EQUIPMENT DESCRIPTION					
RUN 1			RUN 2		

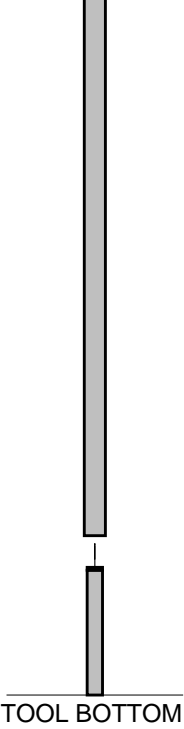
SURFACE EQUIPMENT			SURFACE EQUIPMENT		
MWPM-AA			MPBM-AA 47		

DOWNHOLE EQUIPMENT			DOWNHOLE EQUIPMENT		
SWBS-B 787		11.18	SWBS-B 786		10.08
SWBS-B 786		10.50	SWBS-B 787		9.40
SWBS-B 785		9.81	SWBS-B 785		8.71
SWHS-A 759		9.13	SWHS-A 759		8.02
MWGT-AA 69		8.80	CCL-L 9851 CCL-L 9851		TOOL ZERO
MWPG-AA					
MWGH-AA					
	MWPG GR	2.41			
MWPT-CA 74		7.82	MPSU-CA		7.22
MWPH-AA			MPSU-CA		
MWPS-AA					
	CCL SMWP Pres SMWP Temp Tension	TOOL ZERO		CCL Tachomete Cable Cur Head Volt Tension	
MWP GUN		5.00			



MAXIMUM STRING DIAMETER 2.13 IN  
MEASUREMENTS RELATIVE TO TOOL ZERO  
ALL LENGTHS IN METERS

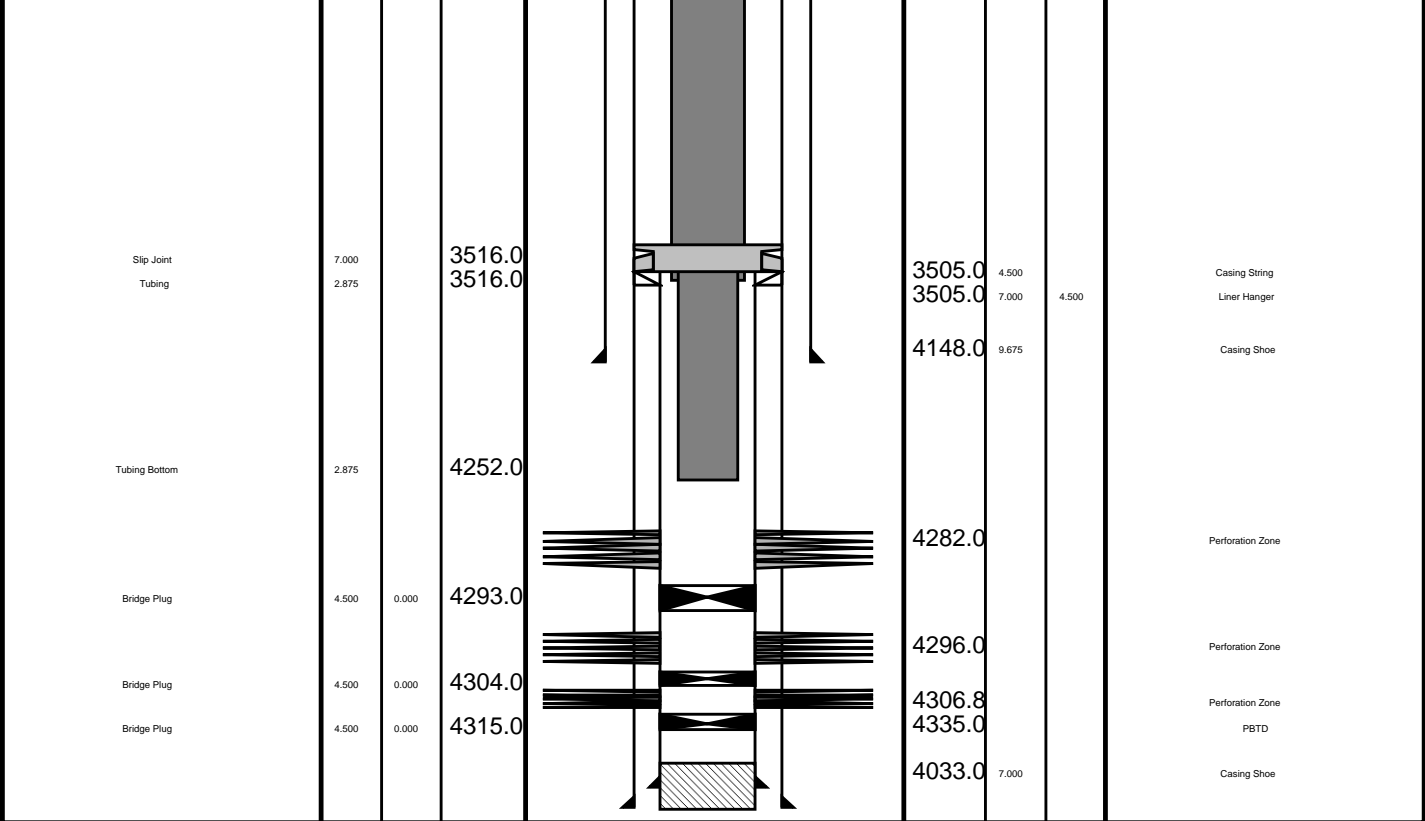
MPEX-FA  
MPEX-FA



MAXIMUM STRING DIAMETER 2.13 IN  
MEASUREMENTS RELATIVE TO TOOL ZERO  
ALL LENGTHS IN METERS

0.81

Production String	(in)		(m)	Well Schematic	(m)	(in)		Casing String
	OD	ID	MD		MD	OD	ID	
Tubing Hanger	7.000	3.500	12.0		13.0	13.375		Casing String
Tubing	3.500		13.8		13.0	9.675		Casing String
					13.0	13.375	9.675	Liner Hanger
					12.5	7.000		Casing String
Shut-in Valve	3.500		445.0		12.5	9.675	7.000	Liner Hanger
Gas Lift Mandrel	3.500		811.0					
Gas Lift Mandrel	3.500		1794.0		1620.0	13.375		Casing Shoe
Gas Lift Mandrel	3.500		2232.0					
Nipple	3.500		2248.0					



## Job Events Summary

MAXIS Field Log

### Schlumberger Job Event Summary

Time	Elapsed Time	Depth (M)	File
Log Pass (up)	9-May-2008 7:32	000:07	4293.4 - 4246.9 PERFO_127LUP
Log Pass (up)	9-May-2008 7:43	000:14	4294.5 - 4238.5 PERFO_128LUP
Station Log	9-May-2008 7:46	000:06	4278.5 - 0.8 PERFO_129LTP
Log Pass (up)	9-May-2008 11:58	000:03	4280.9 - 4250.3 CCL_134LUP
Simulated Log	9-May-2008 12:07	000:17	CCL_135LUP
Log Pass (up)	9-May-2008 12:25	000:02	4286.1 - 4233.8 CCL_136LUP
Log Pass (up)	9-May-2008 16:05	000:03	4283.5 - 4242.7 PERFO_144LUP
Log Pass (up)	9-May-2008 18:30	000:07	4287.5 - 4239.8 PERFO_149LUP



Cement Dump Pass

MAXIS Field Log

Input DLIS Files

DEFAULT      PERFO\_149LUP      FN:147    PRODUCER    09-May-2008 18:30    4287.5 M      4239.8 M

Output DLIS Files

DEFAULT      PERFO\_150PUP      FN:148    PRODUCER    09-May-2008 18:39    4288.5 M      4241.3 M

OP System Version: 15C0-309  
MCM

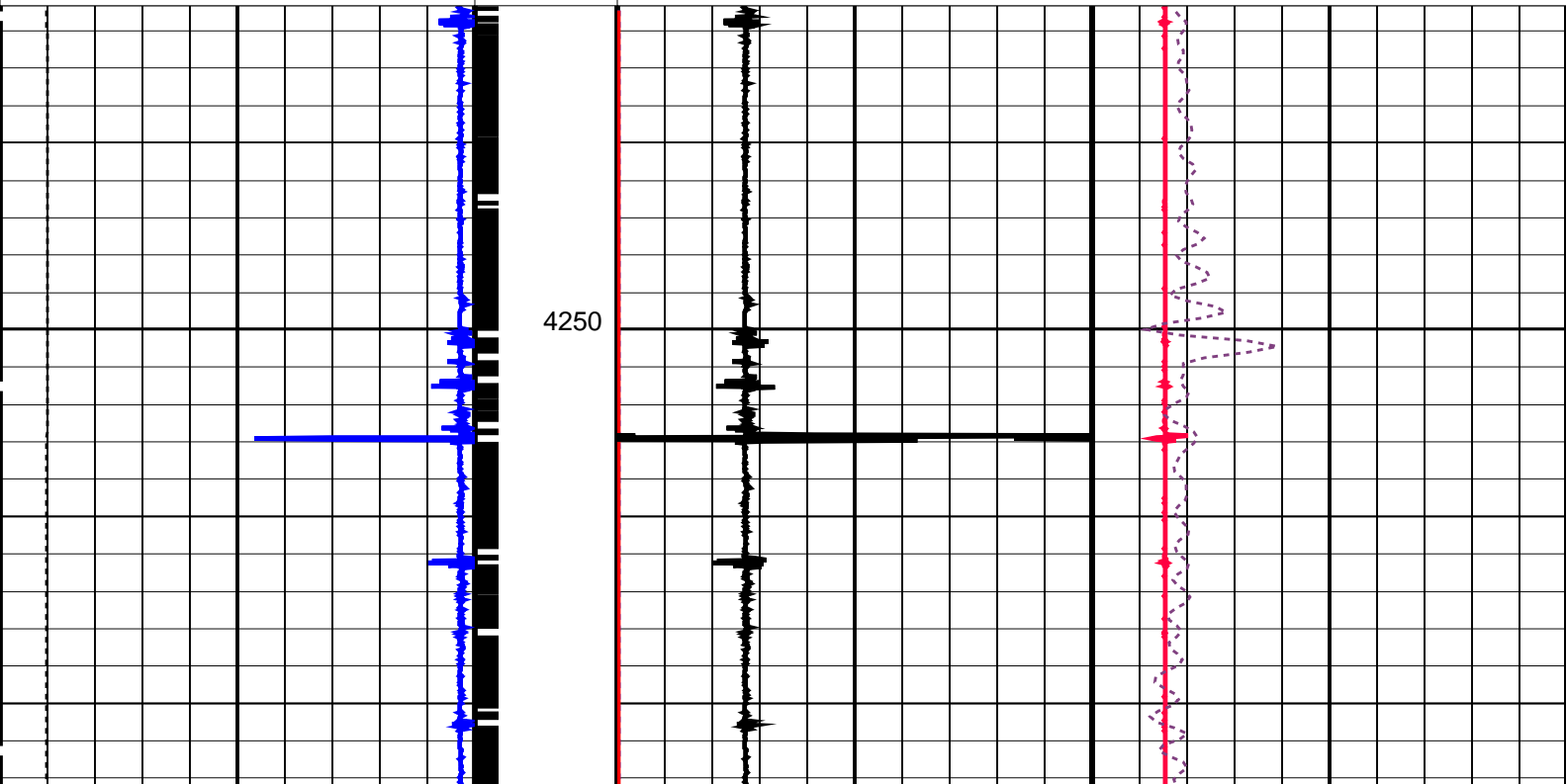
SHM\_GUN      SRPC-3546-Q1\_2008\_OP15      CCL-L      SRPC-3546-Q1\_2008\_OP15

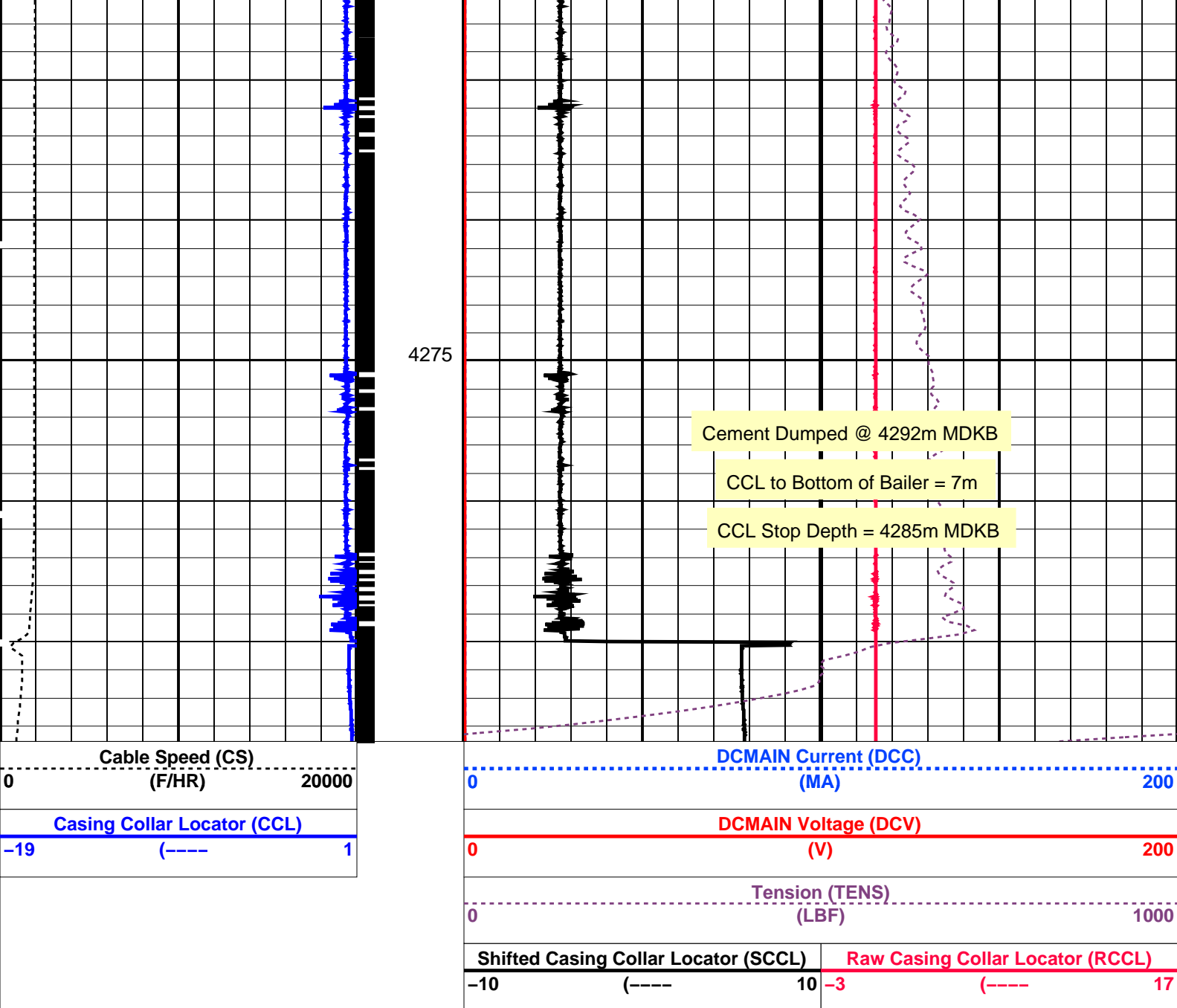
PIP SUMMARY

└─ Casing Collars

Time Mark Every 60 S

--	--	--	--	--	--	--	--	--	--	--	--	--	--	--	--	--	--	--	--	--	--	--	--	--	--	--	--	--	--	--	--	--	--	--	--	--	--	--	--	--	--	--	--	--	--	--	--	--	--	--	--	--	--	--	--	--	--	--	--	--	--	--	--	--	--	--	--	--	--	--	--	--	--	--	--	--	--	--	--	--	--	--	--	--	--	--	--	--	--	--	--	--	--	--	--	--	--	--	--	--	--	--	--	--	--	--	--	--	--	--	--	--	--	--	--	--	--	--	--	--	--	--	--	--	--	--	--	--	--	--	--	--	--	--	--	--	--	--	--	--	--	--	--	--	--	--	--	--	--	--	--	--	--	--	--	--	--	--	--	--	--	--	--	--	--	--	--	--	--	--	--	--	--	--	--	--	--	--	--	--	--	--	--	--	--	--	--	--	--	--	--	--	--	--	--	--	--	--	--	--	--	--	--	--	--	--	--	--	--	--	--	--	--	--	--	--	--	--	--	--	--	--	--	--	--	--	--	--	--	--	--	--	--	--	--	--	--	--	--	--	--	--	--	--	--	--	--	--	--	--	--	--	--	--	--	--	--	--	--	--	--	--	--	--	--	--	--	--	--	--	--	--	--	--	--	--	--	--	--	--	--	--	--	--	--	--	--	--	--	--	--	--	--	--	--	--	--	--	--	--	--	--	--	--	--	--	--	--	--	--	--	--	--	--	--	--	--	--	--	--	--	--	--	--	--	--	--	--	--	--	--	--	--	--	--	--	--	--	--	--	--	--	--	--	--	--	--	--	--	--	--	--	--	--	--	--	--	--	--	--	--	--	--	--	--	--	--	--	--	--	--	--	--	--	--	--	--	--	--	--	--	--	--	--	--	--	--	--	--	--	--	--	--	--	--	--	--	--	--	--	--	--	--	--	--	--	--	--	--	--	--	--	--	--	--	--	--	--	--	--	--	--	--	--	--	--	--	--	--	--	--	--	--	--	--	--	--	--	--	--	--	--	--	--	--	--	--	--	--	--	--	--	--	--	--	--	--	--	--	--	--	--	--	--	--	--	--	--	--	--	--	--	--	--	--	--	--	--	--	--	--	--	--	--	--	--	--	--	--	--	--	--	--	--	--	--	--	--	--	--	--	--	--	--	--	--	--	--	--	--	--	--	--	--	--	--	--	--	--	--	--	--	--	--	--	--	--	--	--	--	--	--	--	--	--	--	--	--	--	--	--	--	--	--	--	--	--	--	--	--	--	--	--	--	--	--	--	--	--	--	--	--	--	--	--	--	--	--	--	--	--	--	--	--	--	--	--	--	--	--	--	--	--	--	--	--	--	--	--	--	--	--	--	--	--	--	--	--	--	--	--	--	--	--	--	--	--	--	--	--	--	--	--	--	--	--	--	--	--	--	--	--	--	--	--	--	--	--	--	--	--	--	--	--	--	--	--	--	--	--	--	--	--	--	--	--	--	--	--	--	--	--	--	--	--	--	--	--	--	--	--	--	--	--	--	--	--	--	--	--	--	--	--	--	--	--	--	--	--	--	--	--	--	--	--	--	--	--	--	--	--	--	--	--	--	--	--	--	--	--	--	--	--	--	--	--	--	--	--	--	--	--	--	--	--	--	--	--	--	--	--	--	--	--	--	--	--	--	--	--	--	--	--	--	--	--	--	--	--	--	--	--	--	--	--	--	--	--	--	--	--	--	--	--	--	--	--	--	--	--	--	--	--	--	--	--	--	--	--	--	--	--	--	--	--	--	--	--	--	--	--	--	--	--	--	--	--	--	--	--	--	--	--	--	--	--	--	--	--	--	--	--	--	--	--	--	--	--	--	--	--	--	--	--	--	--	--	--	--	--	--	--	--	--	--	--	--	--	--	--	--	--	--	--	--	--	--	--	--	--	--	--	--	--	--	--	--	--	--	--	--	--	--	--	--	--	--	--	--	--	--	--	--	--	--	--	--	--	--	--	--	--	--	--	--	--	--	--	--	--	--	--	--	--	--	--	--	--	--	--	--	--	--	--	--	--	--	--	--	--	--	--	--	--	--	--	--	--	--	--	--	--	--	--	--	--	--	--	--	--	--	--	--	--	--	--	--	--	--	--	--	--	--	--	--	--	--	--	--	--	--	--	--	--	--	--	--	--	--	--	--	--	--	--	--	--	--	--	--	--	--	--	--	--	--	--	--	--	--	--	--	--	--	--	--	--	--	--	--	--	--	--	--	--	--	--	--	--	--	--	--	--	--	--	--	--	--	--	--	--	--	--	--	--	--	--	--	--	--	--	--	--	--	--	--	--	--	--	--	--	--	--	--	--	--	--	--	--	--	--	--	--	--	--	--	--	--	--	--	--	--	--	--	--	--	--	--	--	--	--	--	--	--	--	--	--	--	--	--	--	--	--	--	--	--	--	--	--	--	--	--	--	--	--	--	--	--	--	--	--	--	--	--	--	--	--	--	--	--	--	--	--	--	--	--	--	--	--	--	--	--	--	--	--	--	--	--	--	--	--	--	--	--	--	--	--	--	--	--	--	--	--	--	--	--	--	--	--	--	--	--	--	--	--	--	--	--	--	--	--	--	--	--	--	--	--	--	--	--	--	--	--	--	--	--	--	--	--	--	--	--	--	--	--	--	--	--	--	--	--	--	--	--	--	--	--	--	--	--	--	--	--	--	--	--	--	--	--	--	--	--	--	--	--	--	--	--	--	--	--	--	--	--	--	--	--	--	--	--	--	--	--	--	--	--	--	--	--	--	--	--	--	--	--	--	--	--	--	--	--	--	--	--	--	--	--	--	--	--	--	--	--	--	--	--	--	--	--	--	--	--	--	--	--	--	--	--	--	--	--	--	--	--	--	--	--	--	--	--	--	--	--	--	--	--	--	--	--	--	--	--	--	--	--	--	--	--	--	--	--	--	--	--	--	--	--	--	--	--	--	--	--	--	--	--	--	--	--	--	--	--	--	--	--	--	--	--	--	--	--	--	--	--	--	--	--	--	--	--	--	--	--	--	--	--	--	--	--	--	--	--	--	--	--	--	--	--	--	--	--	--	--	--	--	--	--	--	--	--	--	--	--	--	--	--





#### PIP SUMMARY

← Casing Collars

Time Mark Every 60 S

#### Parameters

DLIS Name	Description	Value
CCLD	CCL-L: Casing Collar Locator	12 IN
CCLT	CCL reset delay	0.3 V
	CCL Detection Level	
DO	System and Miscellaneous	
PP	Depth Offset for Playback	1.0 M
	Playback Processing	NORMAL

Format: PERFO Vertical Scale: 1:200

Graphics File Created: 09-May-2008 18:39

#### OP System Version: 15C0-309

MCM

SHM\_GUN SRPC-3546-Q1\_2008\_OP15 CCL-L SRPC-3546-Q1\_2008\_OP15

#### Input DLIS Files

DEFAULT PERFO\_149LUP FN:147 PRODUCER 09-May-2008 18:30 4287.5 M 4239.8 M

Output DLIS Files

DEFAULT

PERFO\_150PUP

FN:148 PRODUCER 09-May-2008 18:39



Water Dump Pass

MAXIS Field Log

Input DLIS Files

DEFAULT

PERFO\_144LUP

FN:142 PRODUCER 09-May-2008 16:05 4283.5 M 4242.7 M

Output DLIS Files

DEFAULT

PERFO\_145PUP

FN:143 PRODUCER 09-May-2008 16:09 4286.1 M 4245.7 M

OP System Version: 15C0-309

MCM

SHM\_GUN

SRPC-3546-Q1\_2008\_OP15

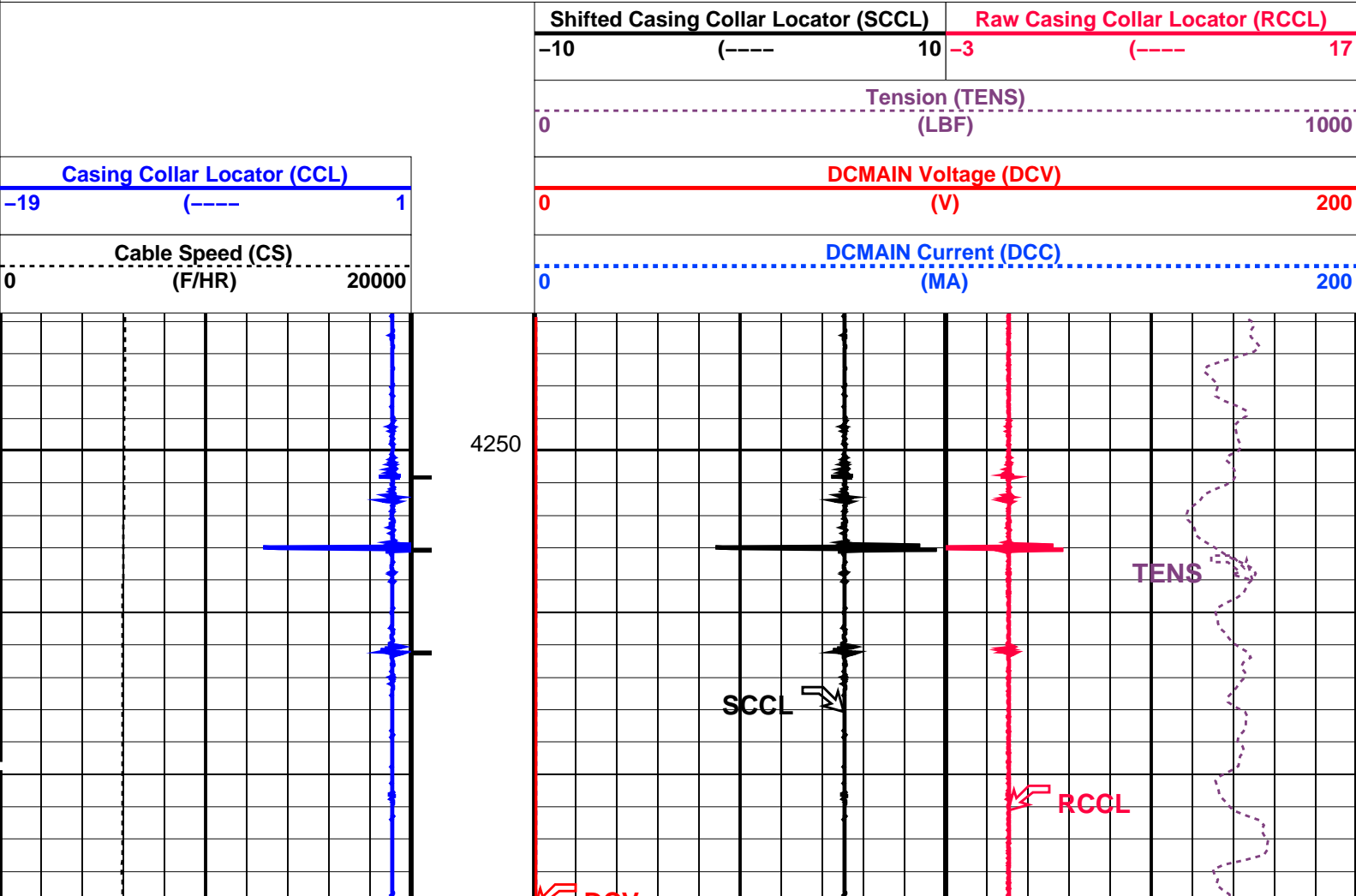
CCL-L

SRPC-3546-Q1\_2008\_OP15

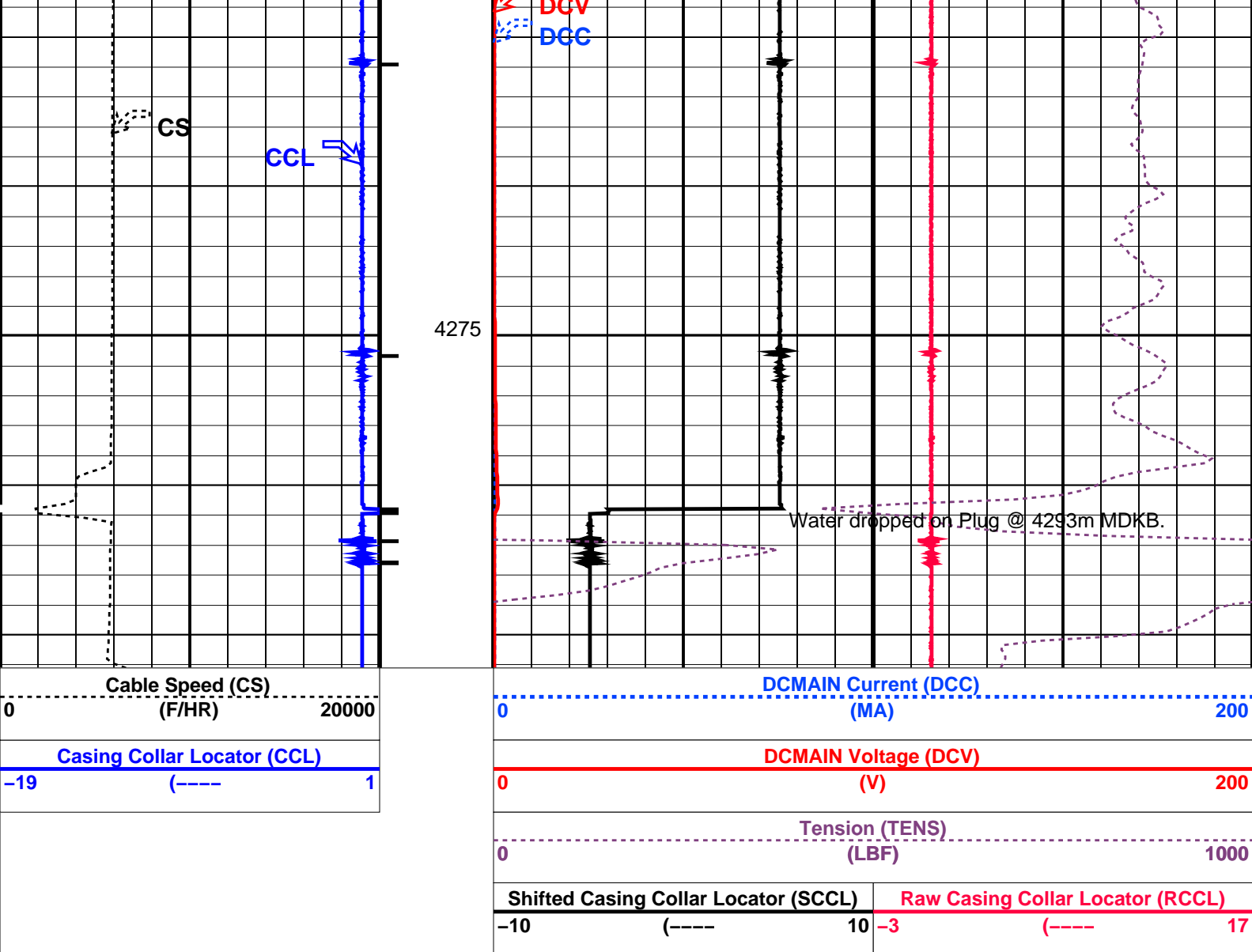
PIP SUMMARY

Time Mark Every 60 S

Time Mark Every 60 S







### PIP SUMMARY

← Casing Collars

Time Mark Every 60 S

### Parameters

DLIS Name	Description	Value
CCLD	CCL-L: Casing Collar Locator	12 IN
CCLT	CCL reset delay	0.3 V
	CCL Detection Level	
DO	System and Miscellaneous	2.6 M
PP	Depth Offset for Playback	NORMAL
	Playback Processing	

Format: PERFO Vertical Scale: 1:200 Graphics File Created: 09-May-2008 16:09

### OP System Version: 15C0-309

MCM

SHM\_GUN SRPC-3546-Q1\_2008\_OP15 CCL-L SRPC-3546-Q1\_2008\_OP15

### Input DLIS Files

DEFAULT PERFO\_144LUP FN:142 PRODUCER 09-May-2008 16:05 4283.5 M 4242.7 M

### Output DLIS Files

DEFAULT PERFO\_145PUP FN:143 PRODUCER 09-May-2008 16:09



Log Away Form Plug Setting

MAXIS Field Log

Output DLIS Files

DEFAULT CCL\_136LUP FN:134 PRODUCER 09-May-2008 12:25 4286.1 M 4233.8 M

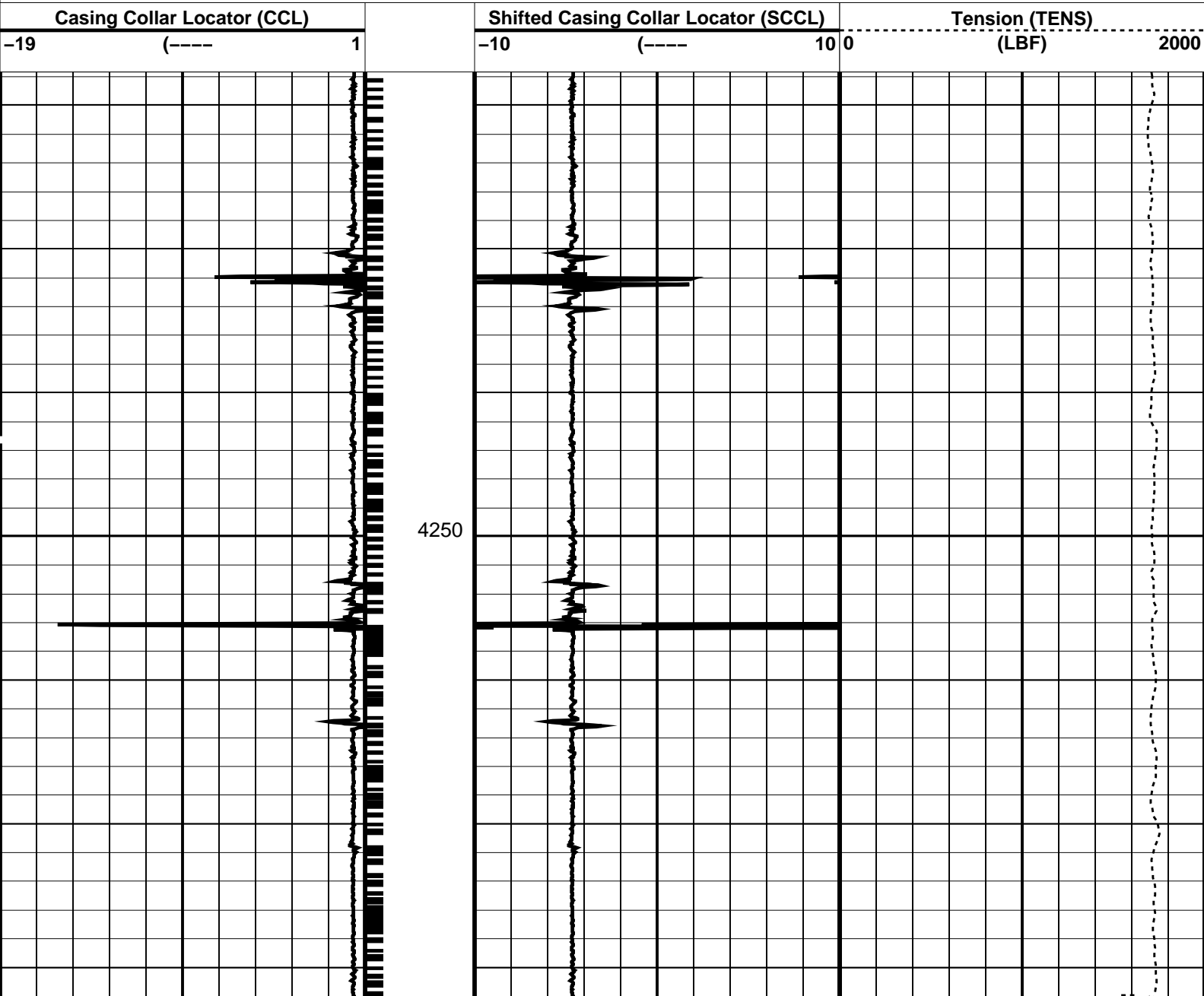
OP System Version: 15C0-309  
MCM

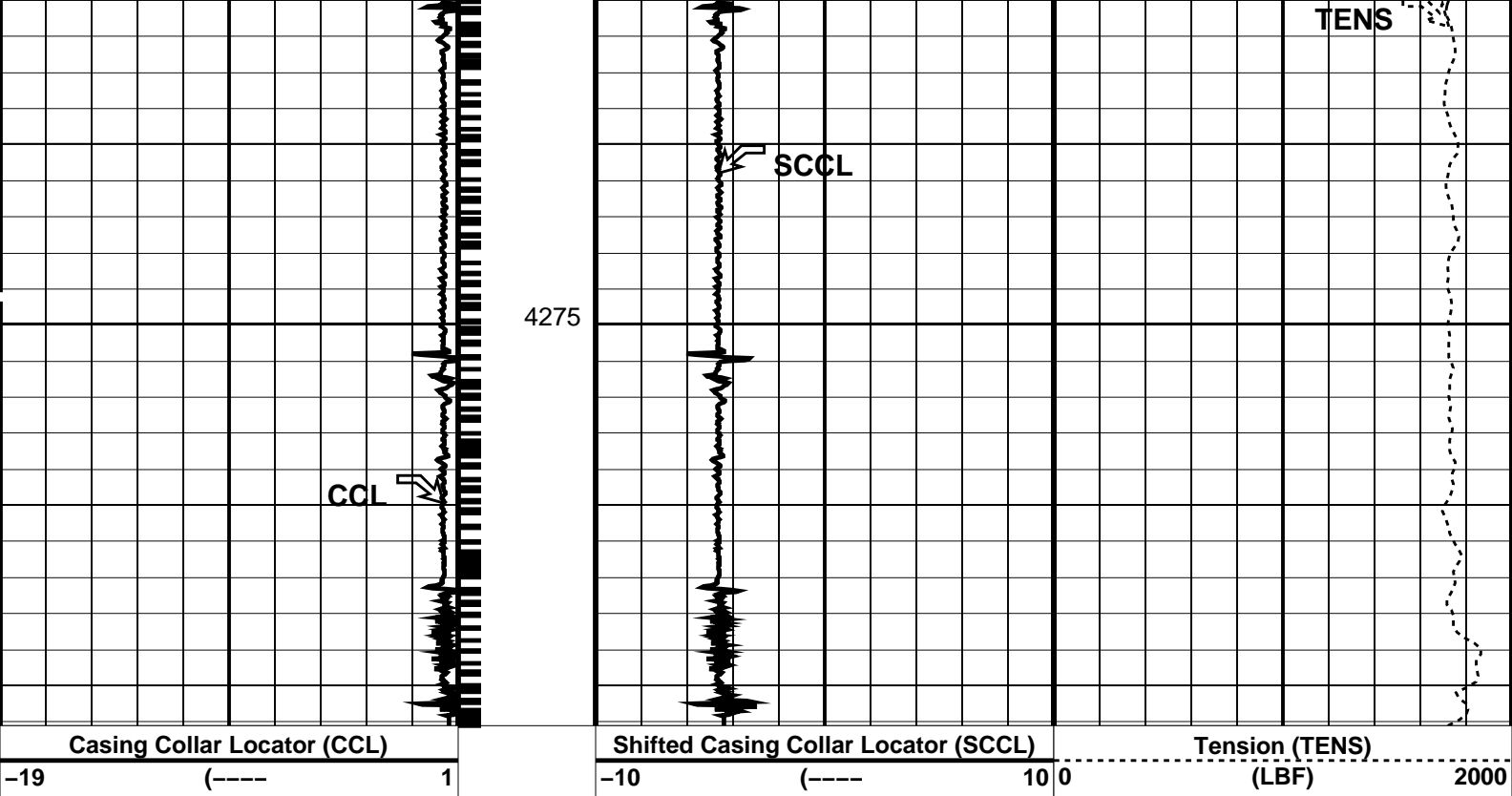
MPEX-FA SRPC-3546-Q1\_2008\_OP15 MPSU-CA SRPC-3546-Q1\_2008\_OP15  
CCL-L SRPC-3546-Q1\_2008\_OP15

PIP SUMMARY

Casing Collars

Time Mark Every 60 S





#### PIP SUMMARY

← Casing Collars

Time Mark Every 60 S

#### Parameters

DLIS Name	Description	Value
CCL-L: Casing Collar Locator		
CCLD	CCL reset delay	12 IN
CCLT	CCL Detection Level	0.3 V

Format: PERFO Vertical Scale: 1:200

Graphics File Created: 09-May-2008 12:25

#### OP System Version: 15C0-309

MCM

MPEX-FA	SRPC-3546-Q1_2008_OP15	MPSU-CA	SRPC-3546-Q1_2008_OP15
CCL-L	SRPC-3546-Q1_2008_OP15		

#### Output DLIS Files

DEFAULT	CCL_136LUP	FN:134	PRODUCER	09-May-2008 12:25
---------	------------	--------	----------	-------------------

**Schlumberger**

4.5" Posiset Plug  
Top of Seal @ 4293m MDKB

MAXIS Field Log

#### Output DLIS Files

DEFAULT	CCL_135LUP	FN:133	PRODUCER	09-May-2008 12:07
---------	------------	--------	----------	-------------------

# OP System Version: 15C0-309

MCM

MPEX-FA  
CCL-L

SRPC-3546-Q1\_2008\_OP15  
SRPC-3546-Q1\_2008\_OP15

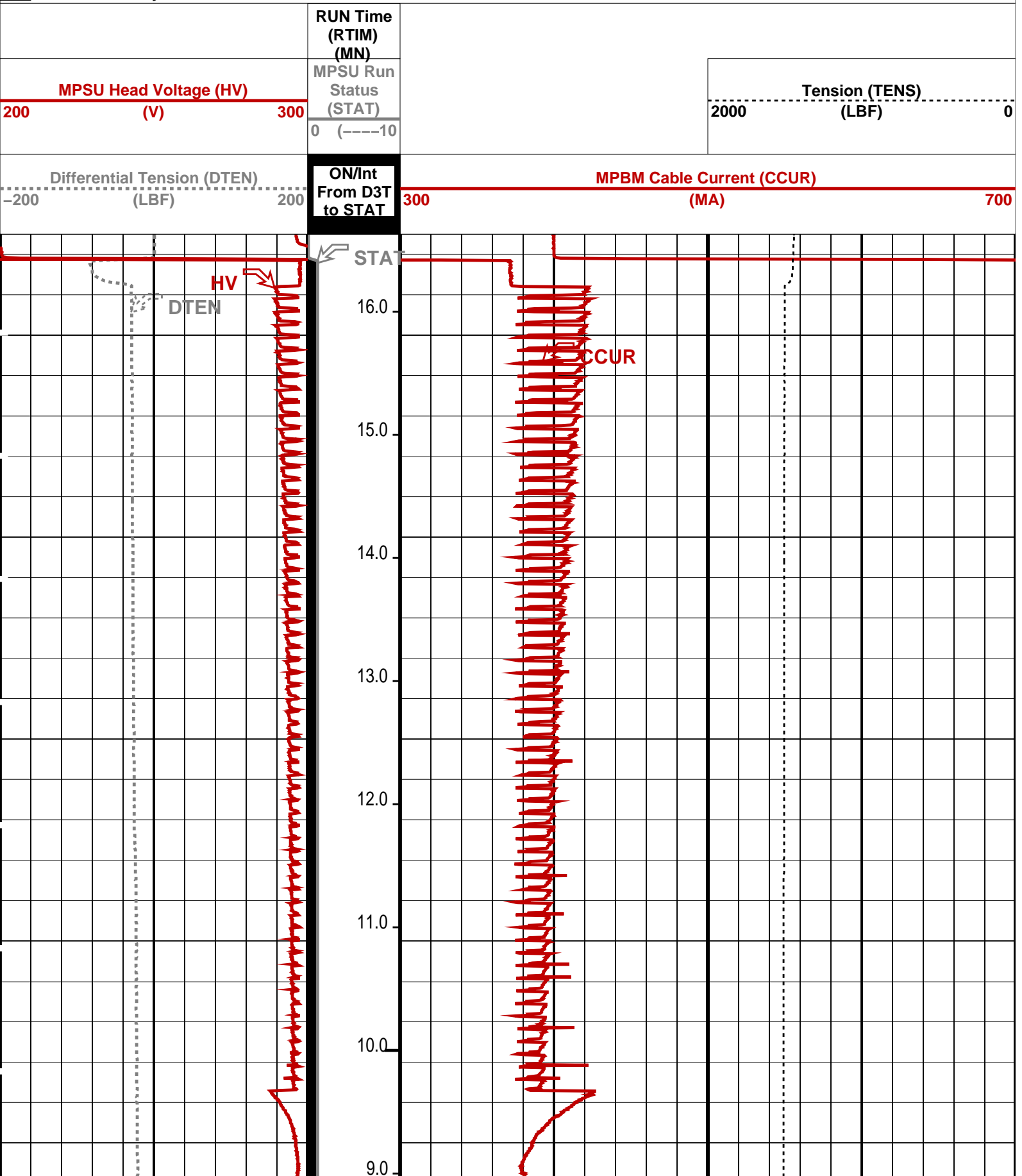
MPSU-CA

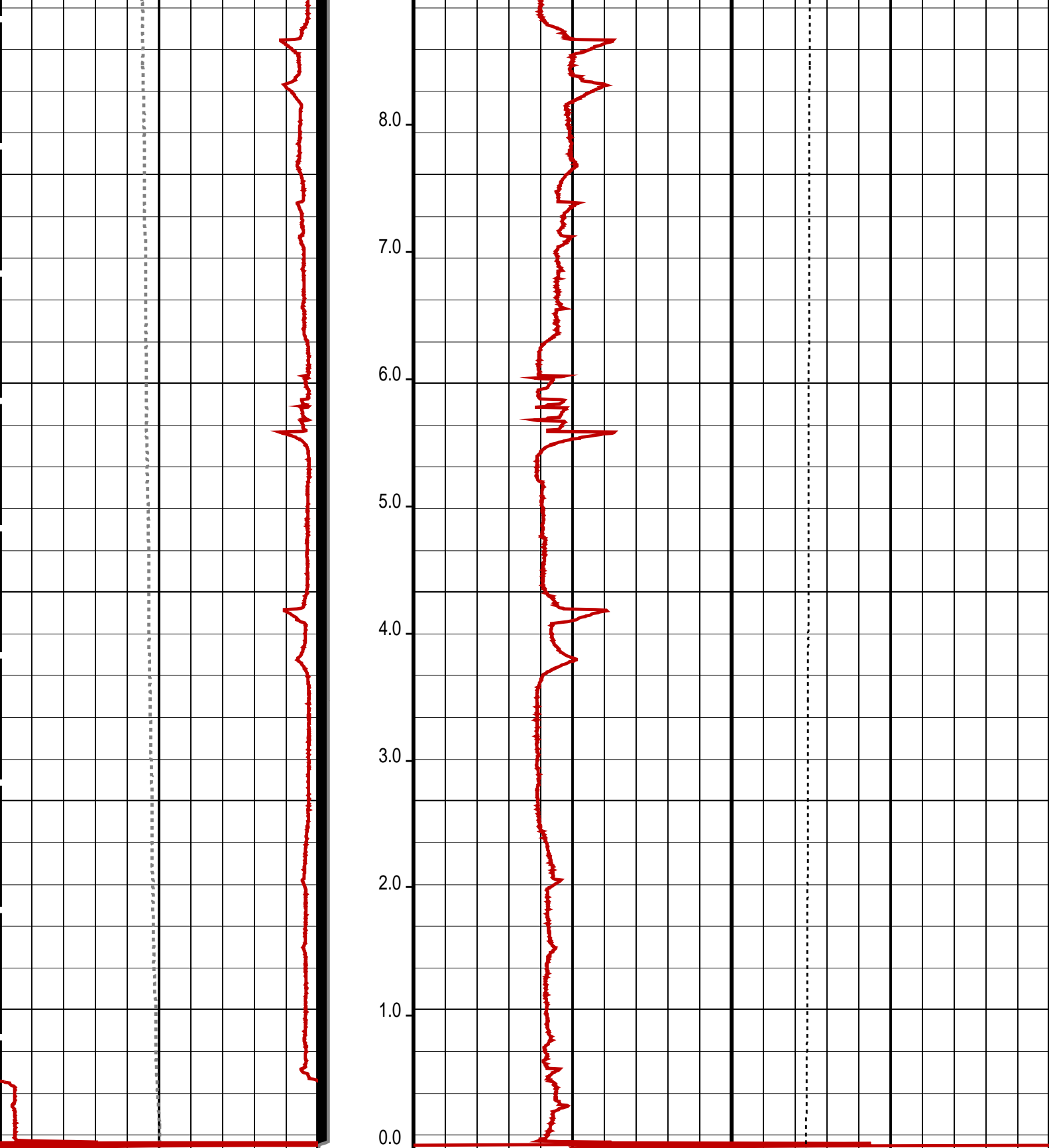
SRPC-3546-Q1\_2008\_OP15

## PIP SUMMARY

⊥ MPSU Run Time Every 1 MN  
⊥ MPSU Run Time Every 10 MN

■ Time Mark Every 60 S





Differential Tension (DTEN) (LBF)		ON/Int From D3T to STAT	MPBM Cable Current (CCUR)	
-200	200		300	700 (MA)
MPSU Head Voltage (HV) (V)			Tension (TENS) (LBF)	
200	300	MPSU Run Status (STAT)	2000	0
		0 (----10		
		RUN Time (RTIM) (MN)		

# PIP SUMMARY

→ MPSU Run Time Every 1 MN  
→ MPSU Run Time Every 10 MN

Time Mark Every 60 S

## Parameters

DLIS Name	Description	Value
MPSU-CA: MECHANICAL PLUGBACK SETTING UNIT		
IPUMP	Intensifier Pump	TRUE

Format: MPBT Vertical Scale: 1:600 Graphics File Created: 09-May-2008 12:07

## OP System Version: 15C0-309

MCM

MPEX-FA	SRPC-3546-Q1_2008_OP15	MPSU-CA	SRPC-3546-Q1_2008_OP15
CCL-L	SRPC-3546-Q1_2008_OP15		

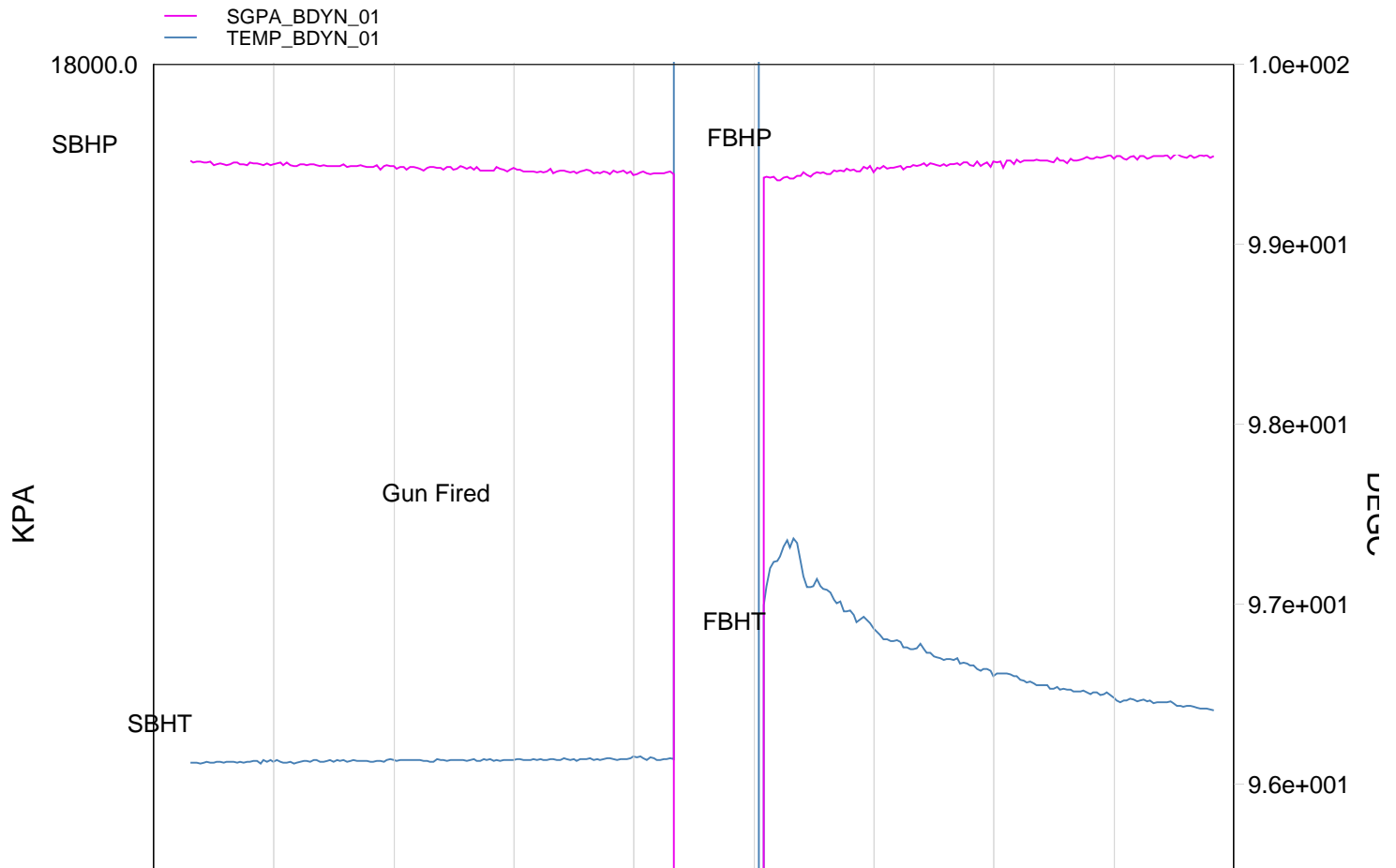
## Output DLIS Files

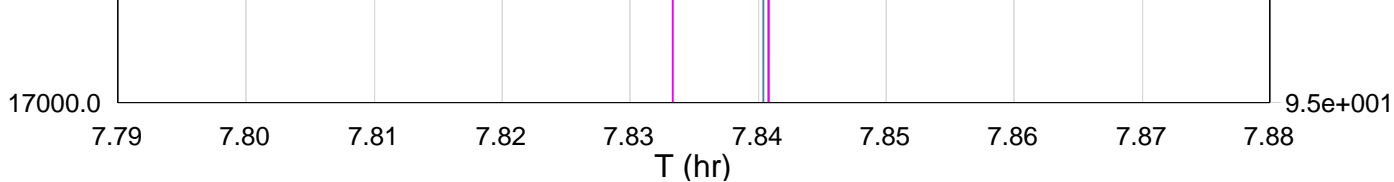
DEFAULT CCL\_135LUP FN:133 PRODUCER 09-May-2008 12:07

**Schlumberger**

Gun # 1 Fired @  
4282m to 4287m MDKB

MAXIS Field Log





TIME	DEGF	PSIA
7760.0	205.58	2595.057
7740.0	205.62	2595.213
7720.0	205.75	2594.220
7700.0	205.95	2594.093
7680.0	206.19	2593.655
7660.0	206.50	2592.991
7640.0	207.22	2591.743
7620.0	707.53	9999.999
7600.0	205.06	2593.146
7580.0	205.05	2593.699
7560.0	205.05	2593.774
7540.0	205.04	2593.743
7520.0	205.04	2594.367
7500.0	205.02	2594.362
7480.0	205.03	2594.682
7460.0	205.03	2594.903

Schlumberger

Gun Shooting Pass

MAXIS Field Log

Company: Esso Australia Pty Ltd.

Well: A-26

## Output DLIS Files

DEFAULT PERFO\_128LUP FN:126 PRODUCER 09-May-2008 07:43

## OP System Version: 15C0-309

MCM

MWP\_GUN SRPC-3546-Q1\_2008\_OP15 MWPT-CA SRPC-3546-Q1\_2008\_OP15  
MWGT-AA SRPC-3546-Q1\_2008\_OP15

## PIP SUMMARY

☒ Time Mark Every 60 S

Pressure (SGP)  
(PSIA)

Temperature  
(TEMP\_MWPT)  
(DEGF)

Tension (TENS)  
(LBF) 0 2000

CCL  
From CCL to T1

Temperature (TEMP\_MWPT)  
(DEGF) 0 2







MWP\_GUN  
MWGT-AA

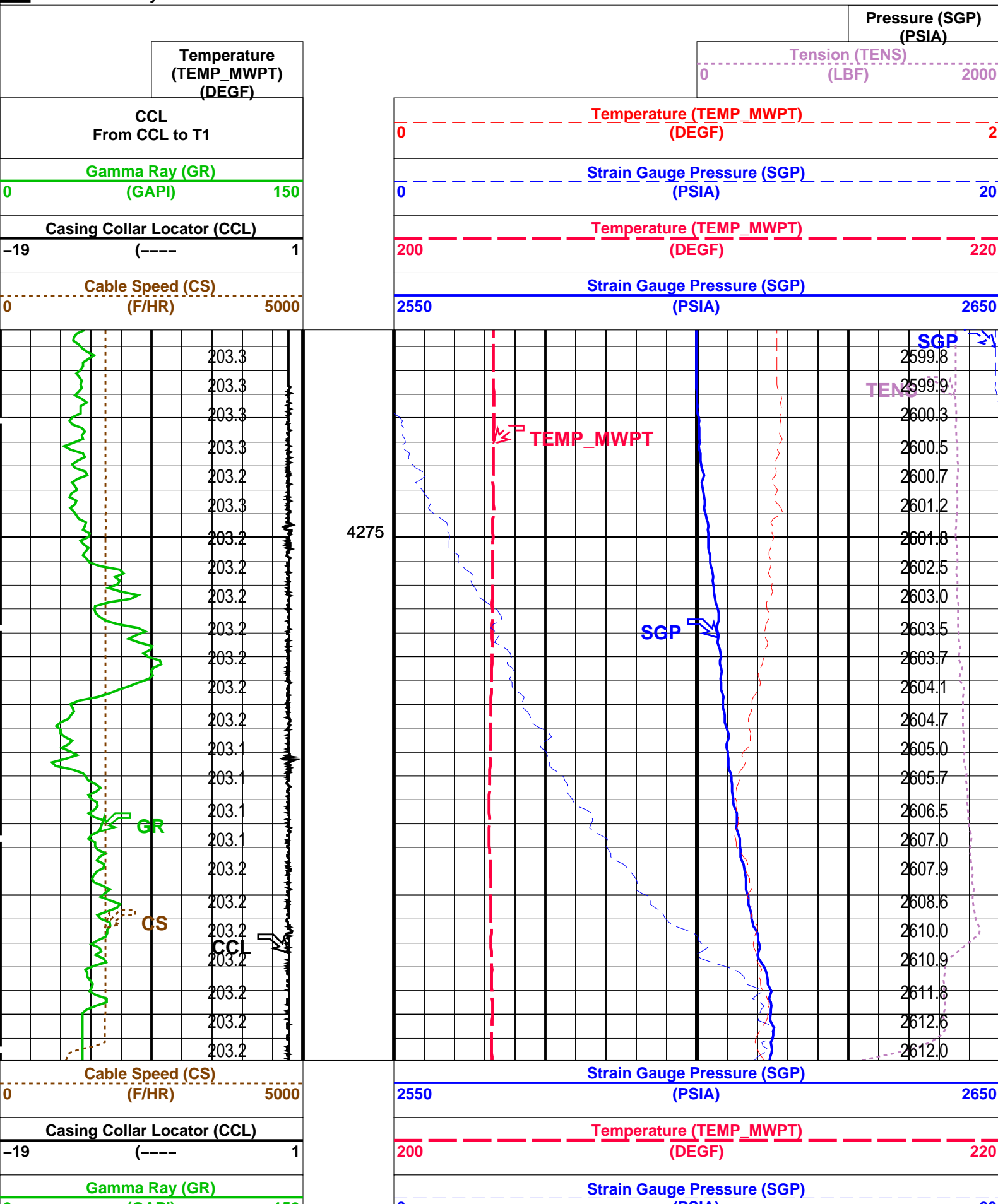
SRPC-3546-Q1\_2008\_OP15  
SRPC-3546-Q1\_2008\_OP15

MWPT-CA

SRPC-3546-Q1\_2008\_OP15

# PIP SUMMARY

Time Mark Every 60 S



(GAPI) 150		0 (PSIA) 20	
CCL From CCL to T1		Temperature (TEMP_MWPT) (DEGF) 0 2	
Temperature (TEMP_MWPT) (DEGF)		Tension (TENS) (LBF) 0 2000	
			Pressure (SGP) (PSIA)

PIP SUMMARY			
Time Mark Every 60 S			

Parameters			
DLIS Name	Description	Value	
MWPT-CA: MEASUREMENT WHILE PERFORATING TOOL			
DEVI_FL_CORR	Deviation Angle for Flow Line Correction	0	DEG
FLD	Flow Line Density	1	G/C3
MWPT_NULL_SOURCE	MWPT NULL Temperature Source	TEMS	
MWPT_NULL_TEMP	MWPT NULL Temperature	0.0	DEGC

Format: MWP	Vertical Scale: 1:200	Graphics File Created: 09-May-2008 07:27
-------------	-----------------------	--

OP System Version: 15C0-309			
MCM			
MWP_GUN	SRPC-3546-Q1_2008_OP15	MWPT-CA	SRPC-3546-Q1_2008_OP15
MWGT-AA	SRPC-3546-Q1_2008_OP15		

Output DLIS Files			
DEFAULT	PERFO_126LUP	FN:124	PRODUCER 09-May-2008 07:27

Company:	Esso Australia Pty Ltd.	Schlumberger
Well:	A-26	
Field:	Bream A	
Rig :	Prod4 / Crane	
Country:	Australia	
2-1/8" Phased Powerjet Perforation		
4-1/2" MPBT Plug		
Setting Record		