

[illegible]

Company: Esso Australia Pty Ltd.

Well: W-18a

Field: West Kingfish

Rig : Prod4 / Ausl

Country: Australia

Field: West Kingfish
Location: Gippsland
Well: W-18a
Company: Esso Australia Pty Ltd.

2 1/8" Phased Powerjet
Mwpt Perforation
7" Mpbp Plug

| LOCATION | |
|-------------------------|---------------------|
| Gippsland | Elev.: K.B. 33.43 m |
| Basin | G.L. -76.13 m |
| Bass Strait | D.F. 33.43 m |
| Permanent Datum: | M.S.L. |
| Log Measured From: | D.F. |
| Drilling Measured From: | D.F. |

| | | | |
|-----------------|----------------------------|-------------------------|------------------------|
| State: Victoria | Max. Well Deviation 36 deg | Longitude 148 06'15.1"E | Latitude 038 35'40.7"S |
|-----------------|----------------------------|-------------------------|------------------------|

Logging Date

Run Number

Depth Driller

Schlumberger Depth

Bottom Log Interval

Top Log Interval

Casing Fluid Type

Salinity

Density

Fluid Level

BIT/CASING/TUBING STRING

Bit Size

From

To

Casing/Tubing Size

Weight

Grade

From

To

Maximum Recorded Temperatures

Logger On Bottom

Unit Number

Recorded By

Witnessed By

PVT DATA

| | |
|--------------------------|--------|
| Oil Density | |
| Water Salinity | |
| Gas Gravity | |
| Bo | |
| Bw | |
| 1/Bg | |
| Bubble Point Pressure | |
| Bubble Point Temperature | |
| Solution GOR | |
| Maximum Deviation | 36 deg |

CEMENTING DATA

| | |
|------------------|---------|
| Primary/Squeeze | Primary |
| Casing String No | |
| Lead Cement Type | |
| Volume | |
| Density | |
| Water Loss | |
| Additives | |
| Tail Cement Type | |
| Volume | |
| Density | |
| Water Loss | |
| Additives | |

Expected Cement Top

Logging Date

Run Number

Depth Driller

Schlumberger Depth

Bottom Log Interval

Top Log Interval

Casing Fluid Type

Salinity

Density

Fluid Level

BIT/CASING/TUBING STRING

Bit Size

From

To

Casing/Tubing Size

Weight

Grade

From

To

Maximum Recorded Temperatures

Logger On Bottom

Unit Number

Recorded By

Witnessed By

Run 1

DEPTH SUMMARY LISTING

Date Created: 8-APR-2008 10:21:17

Depth System Equipment

| Depth Measuring Device | | Tension Device | | Logging Cable | |
|---------------------------|-------------|---------------------------|-------------|--|-----------|
| Type: | IDW-EB | Type: | PSDS/OSDS | Type: | 2-32ZT |
| Serial Number: | 6373 | Serial Number: | 325357 | Serial Number: | 27244 |
| Calibration Date: | 04-Jan-2007 | Calibration Date: | 03-Apr-2008 | Length: | 6409.94 M |
| Calibrator Serial Number: | 9 | Calibrator Serial Number: | 1174 | Conveyance Method: Wireline Rig Type: Rigless | |
| Calibration Cable Type: | 2-32ZT | Calibration Gain: | 0.91 | | |
| Wheel Correction 1: | -2 | Calibration Offset: | 341.00 | | |
| Wheel Correction 2: | -4 | | | | |

Depth Control Parameters

| | |
|---------------------|----------------------------|
| Log Sequence: | Subsequent Log In the Well |
| Reference Log Name: | Petrophysical Analysis |

Depth Control Remarks

| |
|---|
| 1. IDW-EB 6373 used as the primary depth control. |
| 2. Z-Chart used as secondary back-up control. |

DISCLAIMER

THE USE OF AND RELIANCE UPON THIS RECORDED-DATA BY THE HEREIN NAMED COMPANY (AND ANY OF ITS AFFILIATES, PARTNERS, REPRESENTATIVES, AGENTS, CONSULTANTS AND EMPLOYEES) IS SUBJECT TO THE TERMS AND CONDITIONS AGREED UPON BETWEEN SCHLUMBERGER AND THE COMPANY, INCLUDING: (a) RESTRICTIONS ON USE OF THE RECORDED-DATA; (b) DISCLAIMERS AND WAIVERS OF WARRANTIES AND REPRESENTATIONS REGARDING COMPANY'S USE OF AND RELIANCE UPON THE RECORDED-DATA; AND (c) CUSTOMER'S FULL AND SOLE RESPONSIBILITY FOR ANY INFERENCE DRAWN OR DECISION MADE IN CONNECTION WITH THE USE OF THIS RECORDED-DATA.

| |
|-----------------|
| OTHER SERVICES1 |
| OS1: None |

| |
|---|
| REMARKS: RUN NUMBER 1 |
| Log correlated to Petrophysical Analysis composite supplied with program. |
| Maximum well deviation = 36 degree's at 1282m MDKB. |
| This well was perforated with 2 1/8" 45 deg phased powerjet |
| at 6 spf. |
| Interval perforated = 2632.2m to 2633m MDKB. |
| SBHP = 3099 psia, SBHT = 226 degf, after gun fired 3108 psia, 228 degf. |
| Run two was the 7" MPBT plug set @ 2643m MDKB. |
| Run three was the water dump pass. |

The well was then re-perforated over the interval 2634.2m to 2635.2m MDKB.

SBHP = 3102 psia,after gun was fired 3099 psia.

SBHT = 226 degf before and after.

Run five,1 mtr of cement was dumped on top of the MPBT plug.

HUD = 2642m MDKB.

Crew : J Annear,P Lawrence,A McLellan.

| RUN 1 | | | RUN 2 | | |
|------------------|-------|------|-----------------|-------|------|
| SERVICE ORDER #: | | | Ausl08509105 | | |
| PROGRAM VERSION: | | | 15C0-309 | | |
| FLUID LEVEL: | | | 1140 m | | |
| LOGGED INTERVAL | START | STOP | LOGGED INTERVAL | START | STOP |
| | | | | | |
| | | | | | |
| | | | | | |
| | | | | | |

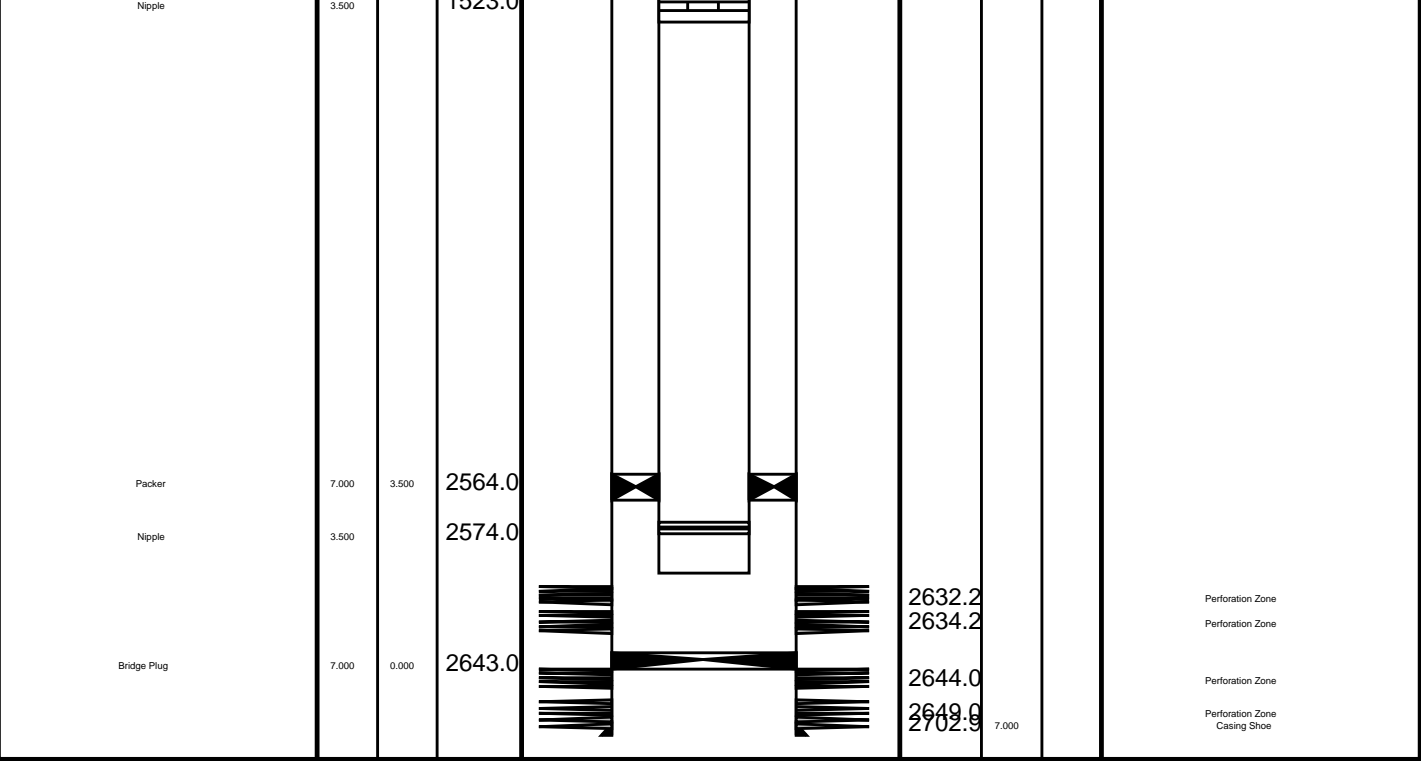
EQUIPMENT DESCRIPTION

RUN 1

RUN 2

| SURFACE EQUIPMENT | SURFACE EQUIPMENT |
|-------------------|-------------------|
| WITM (SHM) | MWPM-AA 3008 |

| DOWNHOLE EQUIPMENT | DOWNHOLE EQUIPMENT |
|--|---|
| <div>SWBS-B 785</div> <div>SWBS-B 786</div> <div>SWBS-B 787</div> <div>SWHS-A 759</div> <div>CCL-L 9851</div> <div>Top Adaptor 1</div> <div>35' Dump Bailer 1</div> <div>14.40</div> <div>13.72</div> <div>13.03</div> <div>12.34</div> <div>12.01</div> <div>11.56</div> <div>11.25</div> <div>TOOL ZERO</div> <div>Tension CCL</div> | <div>SWBS-B 787</div> <div>SWBS-B 786</div> <div>SWBS-B 785</div> <div>SWHS-A 759</div> <div>AH-124 7002</div> <div>MWPG-AA 24029</div> <div>MWGH-AA 69</div> <div>MWPG GR</div> <div>MWPH-AA 74</div> <div>MWPS-AA 74</div> <div>2.41</div> <div>7.55</div> <div>TOOL ZERO</div> <div>4.73</div> <div>4.27</div> <div>CCL</div> <div>SMWP Pres</div> <div>SMWP Temp</div> <div>Tension</div> |



Job Event Summary

MAXIS Field Log

Schlumberger Job Event Summary

| Time | Elapsed Time | Depth (M) | File |
|-----------------|-------------------------|-----------------|--------------|
| Log Pass (down) | 9-Apr-2008 7:13 000:34 | 11.3 - 2635.5 | PERFO_047LDP |
| Log Pass (up) | 9-Apr-2008 7:47 000:04 | 2635.5 - 2563.2 | PERFO_048LUP |
| Simulated Log | 9-Apr-2008 9:35 000:03 | | PERFO_050LUP |
| Simulated Log | 9-Apr-2008 9:39 000:01 | | PERFO_051LUP |
| Log Pass (down) | 9-Apr-2008 10:15 000:29 | 979.5 - 2640.2 | PERFO_052LDP |
| Log Pass (up) | 9-Apr-2008 10:43 000:02 | 2640.2 - 2627.4 | PERFO_053LUP |
| Log Pass (up) | 9-Apr-2008 10:47 000:02 | 2640.6 - 2627.1 | PERFO_054LUP |
| Log Pass (up) | 9-Apr-2008 10:50 000:06 | 2640.9 - 2597.2 | PERFO_055LUP |
| Log Pass (up) | 9-Apr-2008 10:59 000:47 | 2641.5 - 2569.6 | PERFO_056LUP |
| Station Log | 9-Apr-2008 11:03 000:34 | 2630.7 - 5.1 | PERFO_057LTP |
| Simulated Log | 9-Apr-2008 13:10 000:02 | | PERFO_059LUP |
| Log Pass (down) | 9-Apr-2008 13:42 000:40 | -3.0 - 2634.8 | PERFO_060LDP |
| Log Pass (up) | 9-Apr-2008 14:22 000:06 | 2634.7 - 2558.5 | PERFO_061LUP |



Cement Dump Pass

MAXIS Field Log

Output DLIS Files

DEFAULT PERFO_061LUP FN:59 PRODUCER 09-Apr-2008 14:22 2634.7 M 2558.5 M

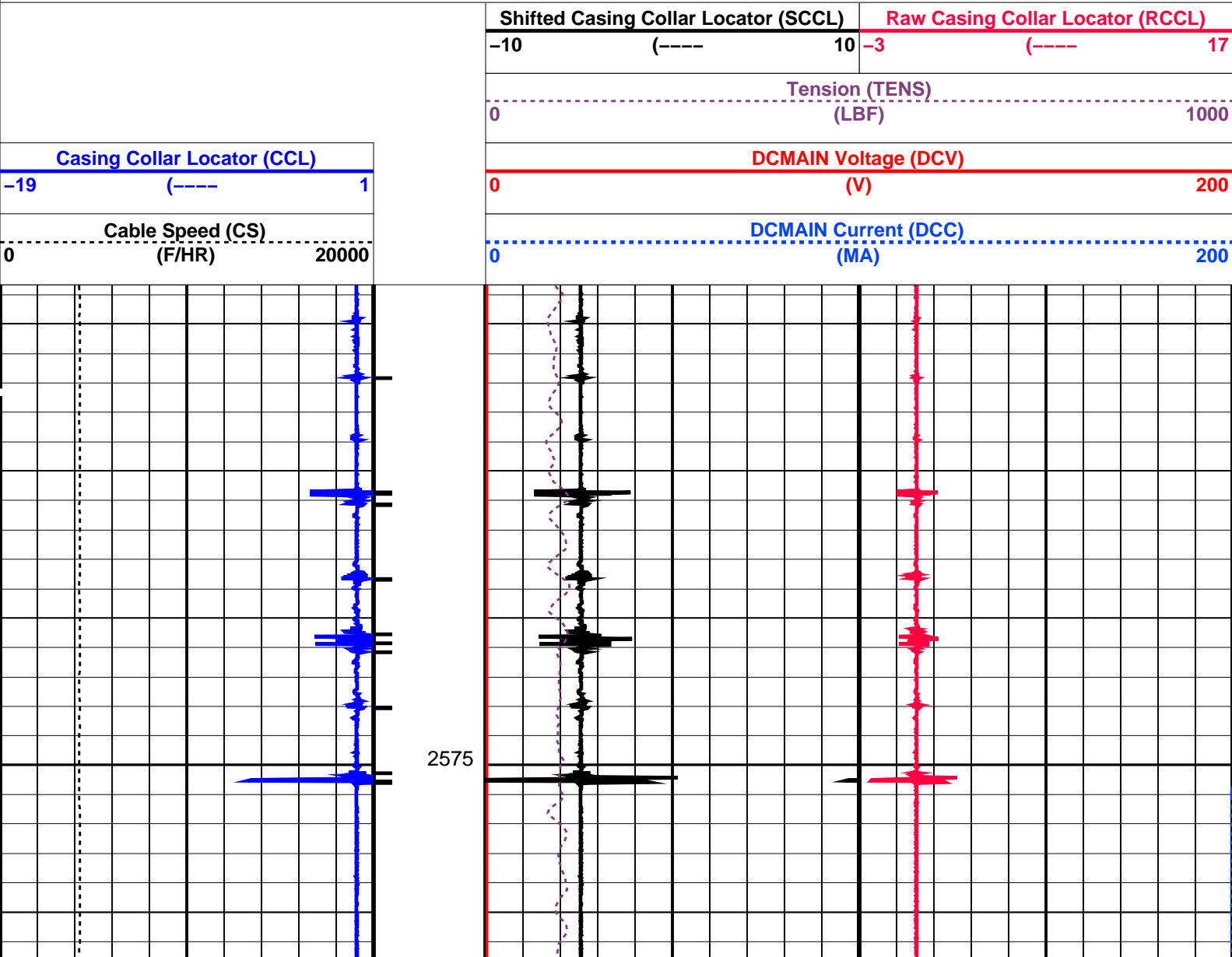
OP System Version: 15C0-309
MCM

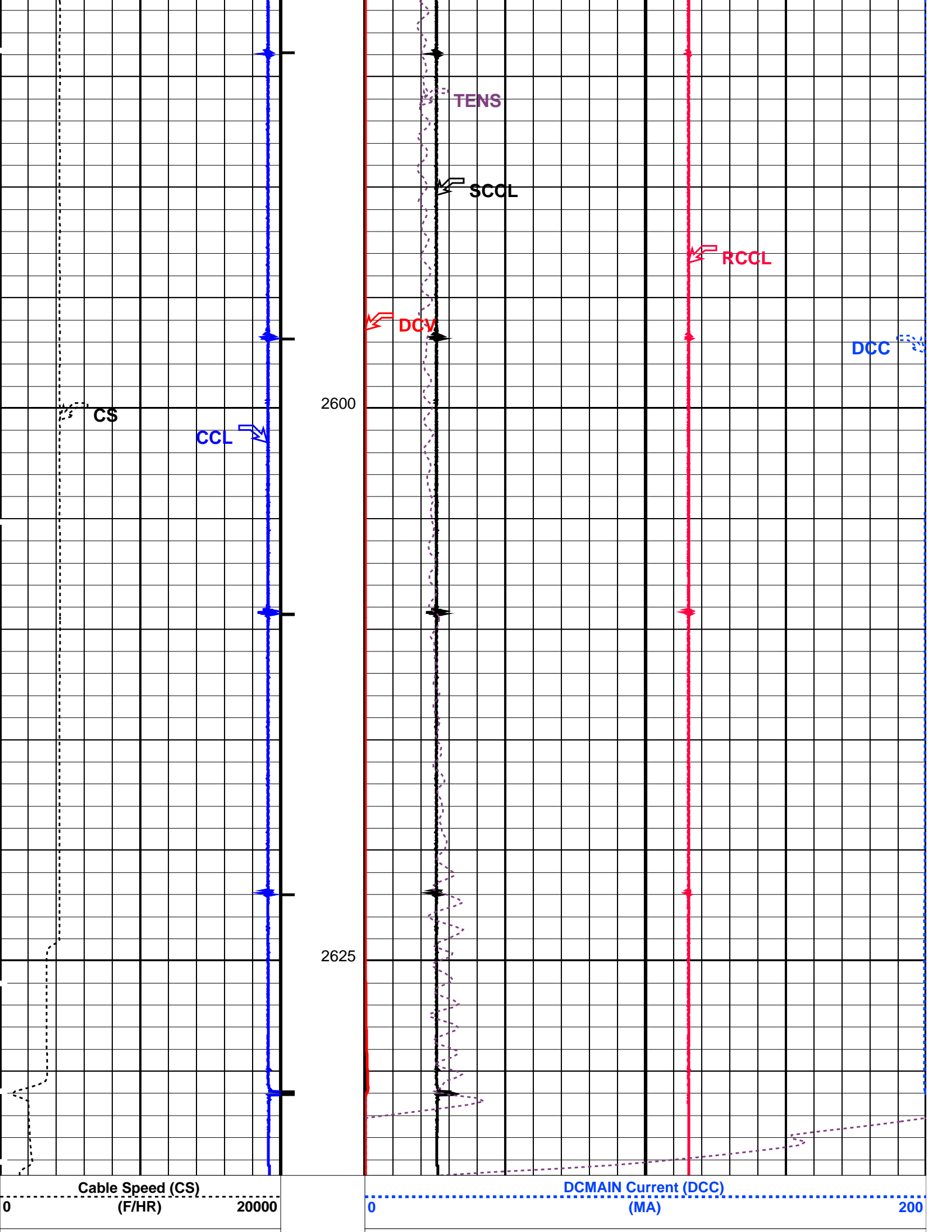
SHM_GUN SRPC-3546-Q1_2008_OP15 CCL-L SRPC-3546-Q1_2008_OP15

PIP SUMMARY

Casing Collars

Time Mark Every 60 S





| | |
|--------------------------------------|----------------------------------|
| Casing Collar Locator (CCL) | DCMAIN Voltage (DCV) |
| -19 (----) 1 | 0 (V) 200 |
| | Tension (TENS) |
| | 0 (LBF) 1000 |
| Shifted Casing Collar Locator (SCCL) | Raw Casing Collar Locator (RCCL) |
| -10 (----) 10 | -3 (----) 17 |

PIP SUMMARY

Time Mark Every 60 S

Casing Collars

| Parameters | | |
|------------------------------|---------------------|-------|
| DLIS Name | Description | Value |
| CCL-L: Casing Collar Locator | | |
| CCLD | CCL reset delay | 12 IN |
| CCLT | CCL Detection Level | 0.3 V |


Format: PERFO

Vertical Scale: 1:200

Graphics File Created: 09-Apr-2008 14:22

| OP System Version: 15C0-309 | | | |
|-----------------------------|------------------------|-------|------------------------|
| MCM | | | |
| SHM_GUN | SRPC-3546-Q1_2008_OP15 | CCL-L | SRPC-3546-Q1_2008_OP15 |

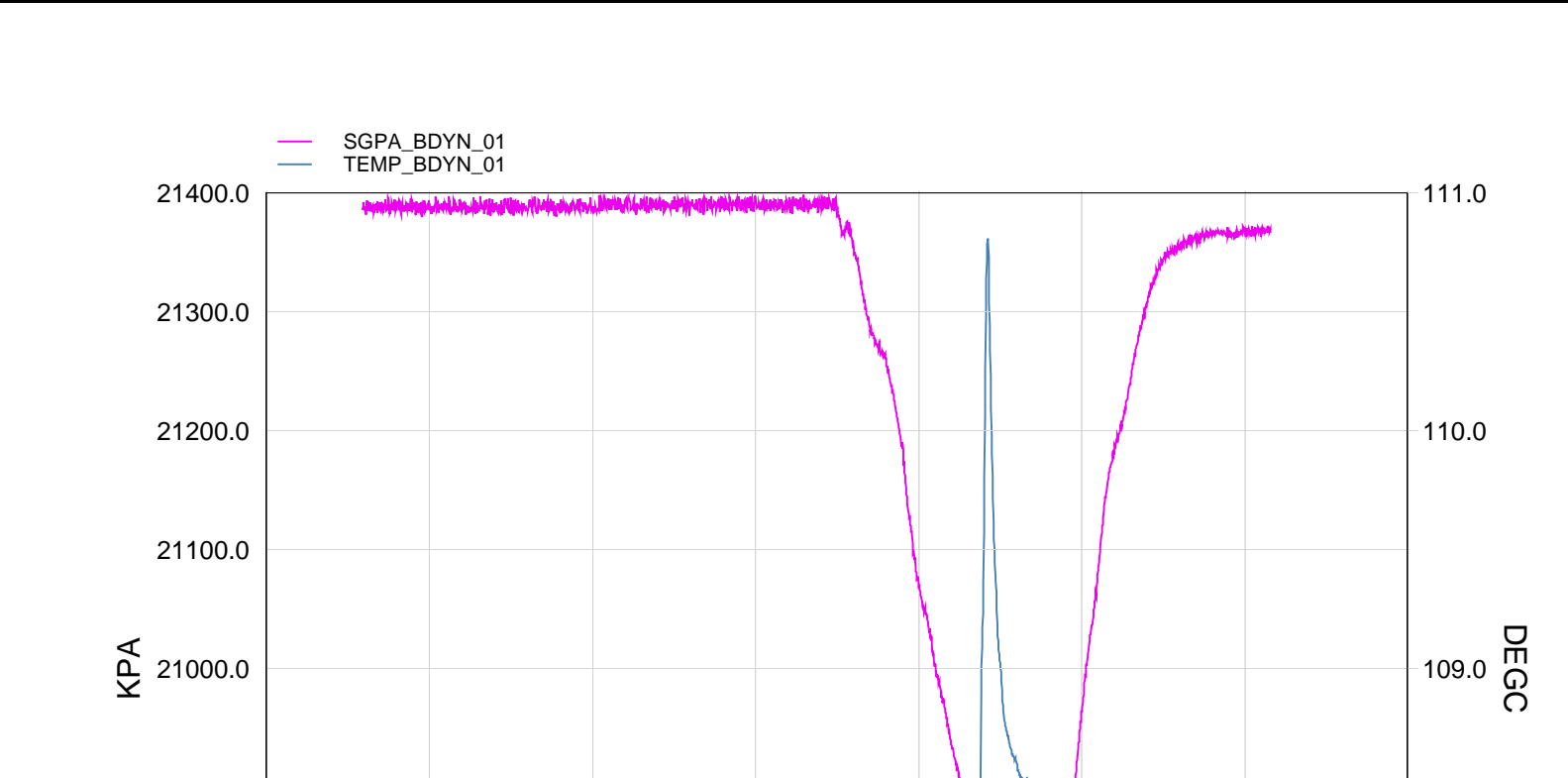
| Output DLIS Files | | | |
|-------------------|--------------|-------|----------------------------|
| DEFAULT | PERFO_061LUP | FN:59 | PRODUCER 09-Apr-2008 14:22 |

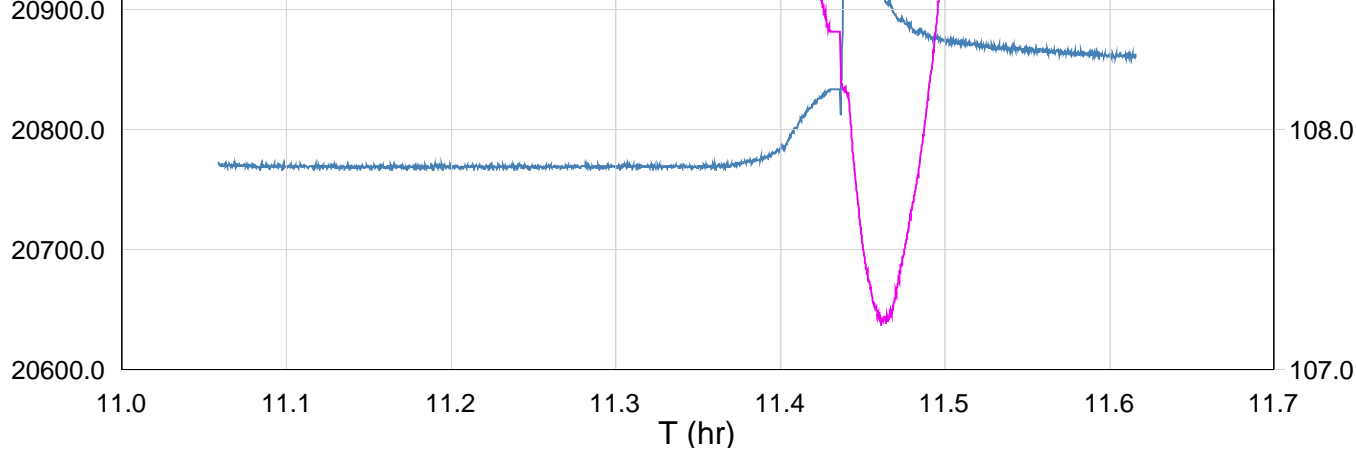


GUN # 2

2634.2m to 2635.2m MDKB

MAXIS Field Log





| TIME | DEGF | PSIA |
|--------|--------|----------|
| 4860.0 | 226.94 | 3099.305 |
| 4800.0 | 226.96 | 3099.041 |
| 4740.0 | 226.99 | 3098.117 |
| 4680.0 | 227.00 | 3096.043 |
| 4620.0 | 227.02 | 3085.864 |
| 4560.0 | 227.04 | 3070.708 |
| 4500.0 | 227.07 | 3042.856 |
| 4440.0 | 227.14 | 3012.596 |
| 4380.0 | 227.31 | 2994.860 |
| 4320.0 | 228.02 | 3001.153 |
| 4260.0 | 226.71 | 3028.564 |
| 4200.0 | 226.56 | 3039.066 |
| 4140.0 | 226.27 | 3054.681 |
| 4080.0 | 226.17 | 3079.327 |
| 4020.0 | 226.13 | 3089.421 |
| 3960.0 | 226.12 | 3100.987 |
| 3900.0 | 226.13 | 3102.737 |
| 3840.0 | 226.12 | 3102.307 |
| 3780.0 | 226.12 | 3102.338 |
| 3720.0 | 226.12 | 3102.596 |
| 3660.0 | 226.11 | 3101.535 |
| 3600.0 | 226.12 | 3102.439 |
| 3540.0 | 226.12 | 3101.518 |
| 3480.0 | 226.12 | 3101.605 |
| 3420.0 | 226.12 | 3102.074 |
| 3360.0 | 226.11 | 3102.097 |
| 3300.0 | 226.12 | 3101.868 |
| 3240.0 | 226.11 | 3101.382 |
| 3180.0 | 226.13 | 3101.996 |
| 3120.0 | 226.12 | 3101.513 |
| 3060.0 | 226.12 | 3102.179 |
| 3000.0 | 226.12 | 3102.312 |
| 2940.0 | 226.13 | 3102.820 |
| 2880.0 | 226.13 | 3102.338 |

Company: Esso Australia Pty Ltd.

Well: W-18a

Output DLIS Files

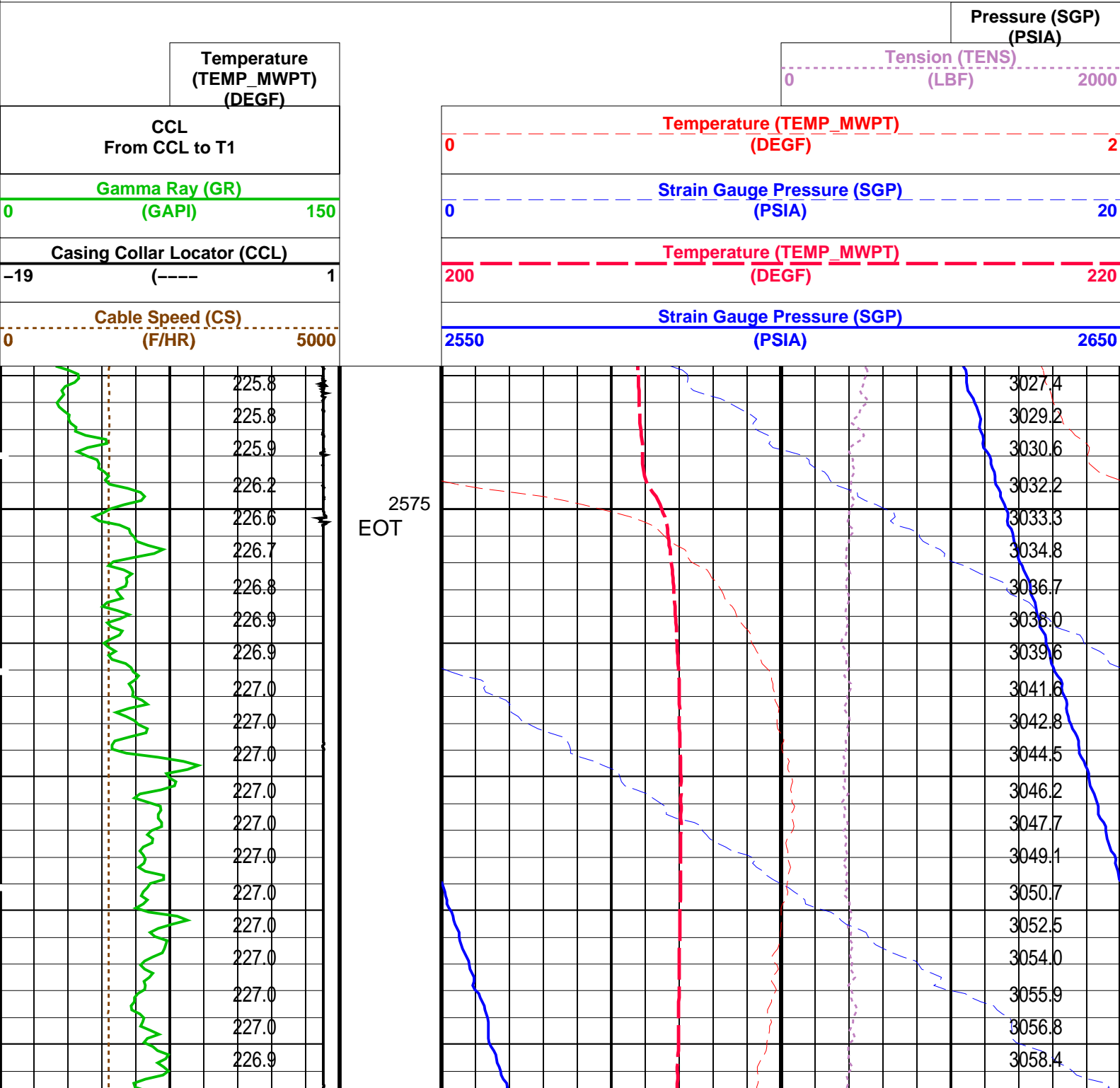
DEFAULT PERFO_056LUP FN:54 PRODUCER 09-Apr-2008 10:59 2641.5 M 2569.6 M

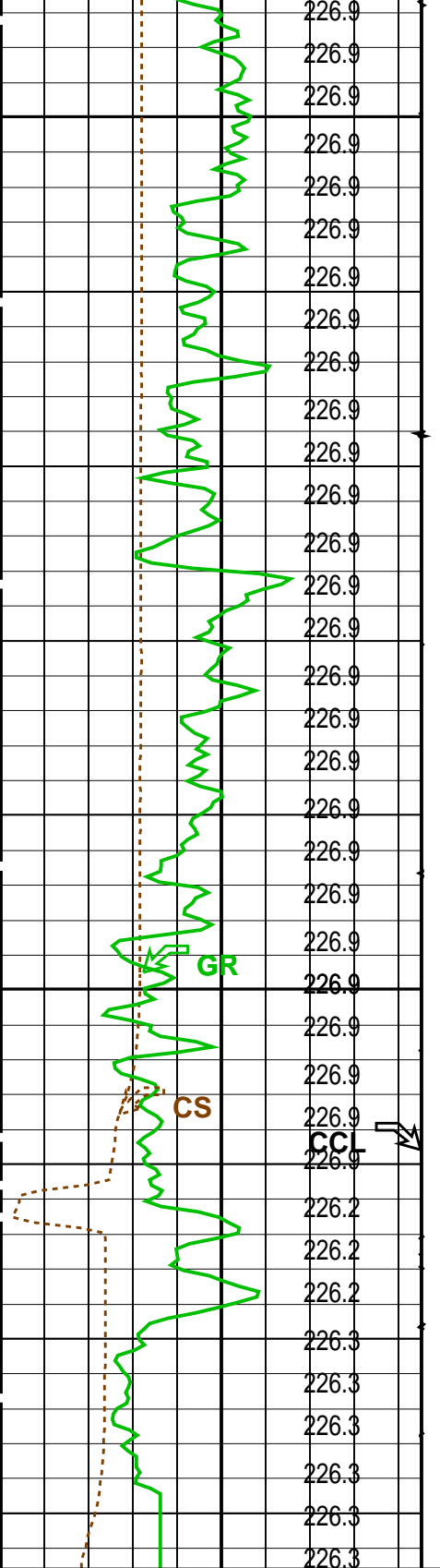
OP System Version: 15C0-309
MCM

MWP_GUN SRPC-3546-Q1_2008_OP15 MWPT-CA SRPC-3546-Q1_2008_OP15
MWGT-AA SRPC-3546-Q1_2008_OP15

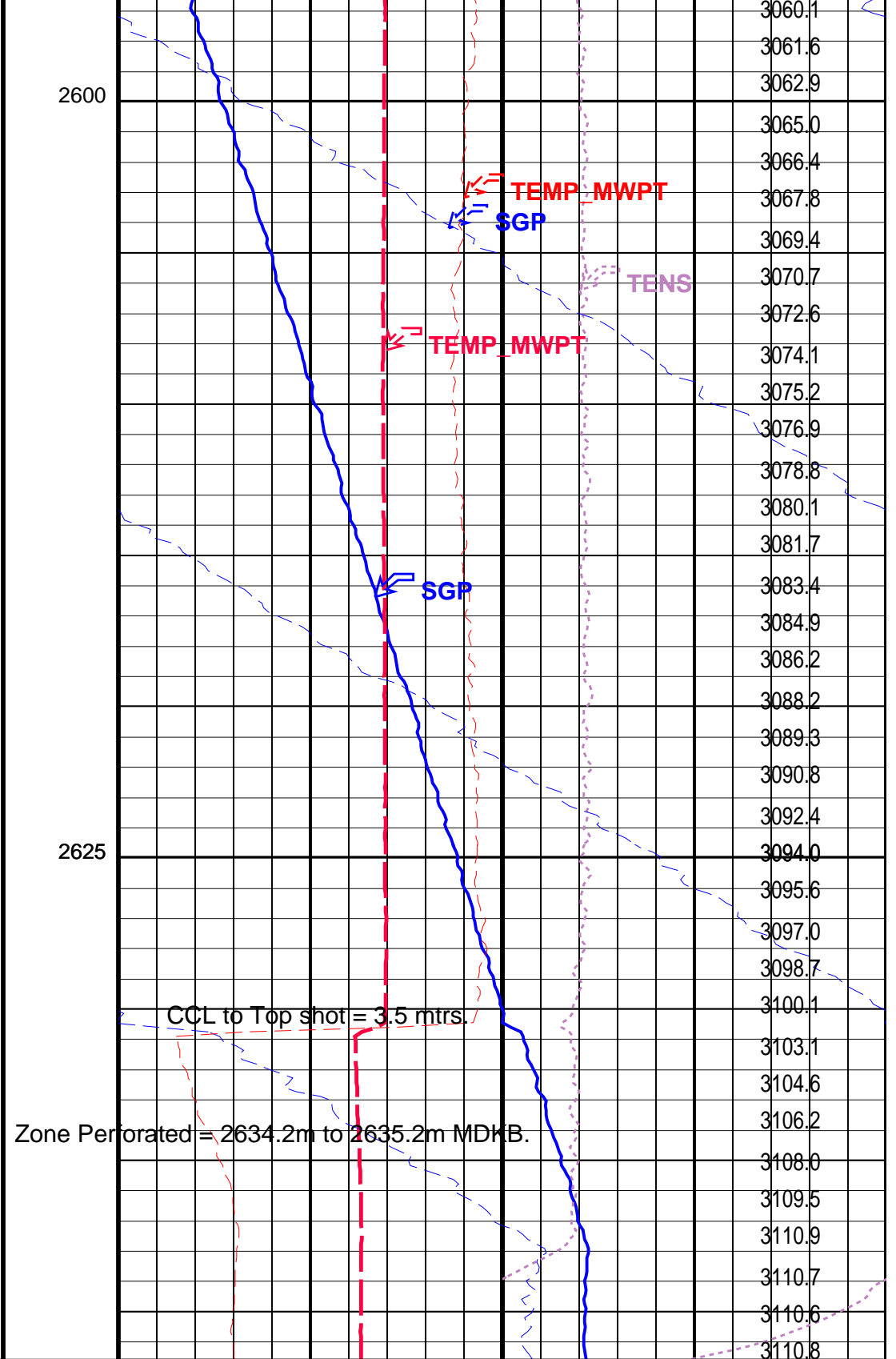
PIP SUMMARY

Time Mark Every 60 S



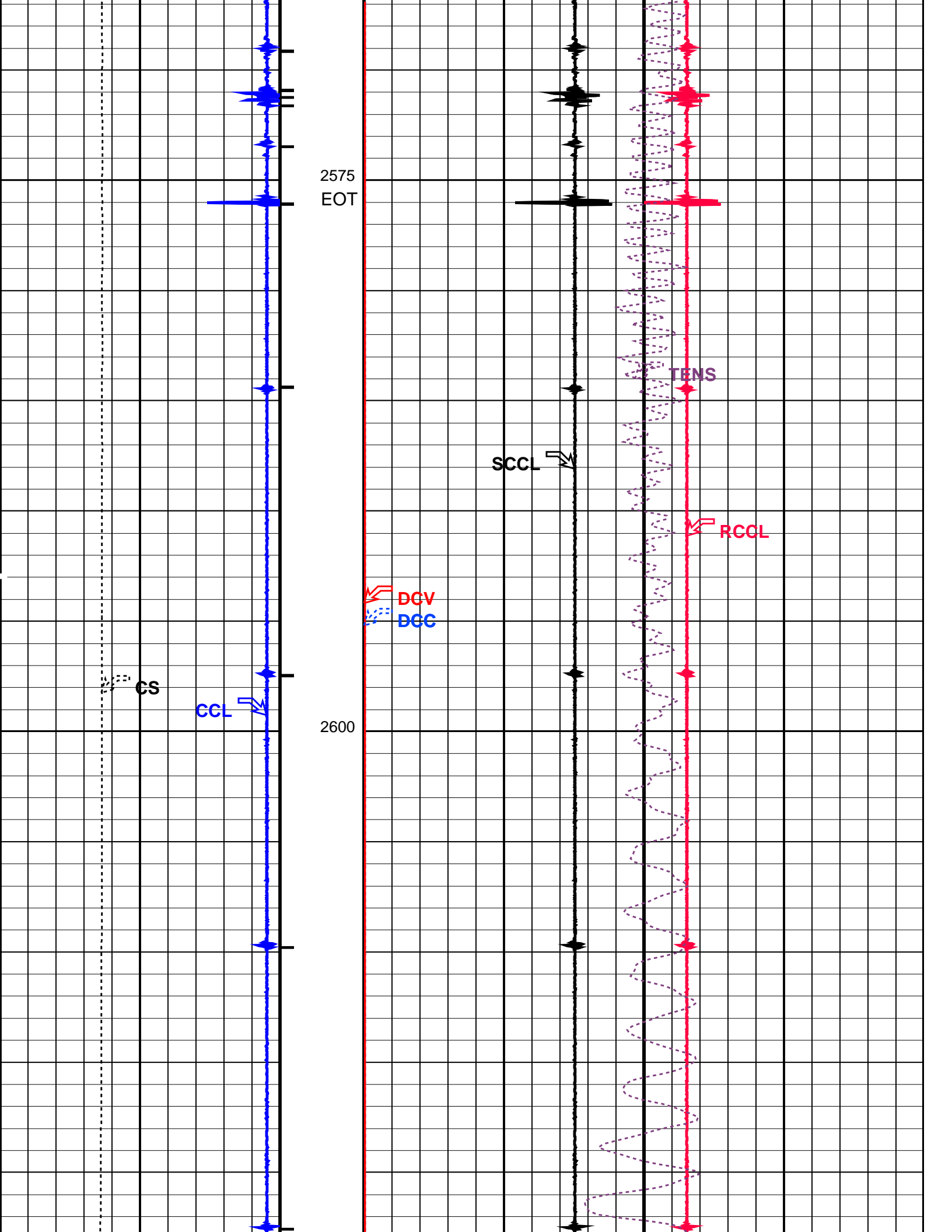


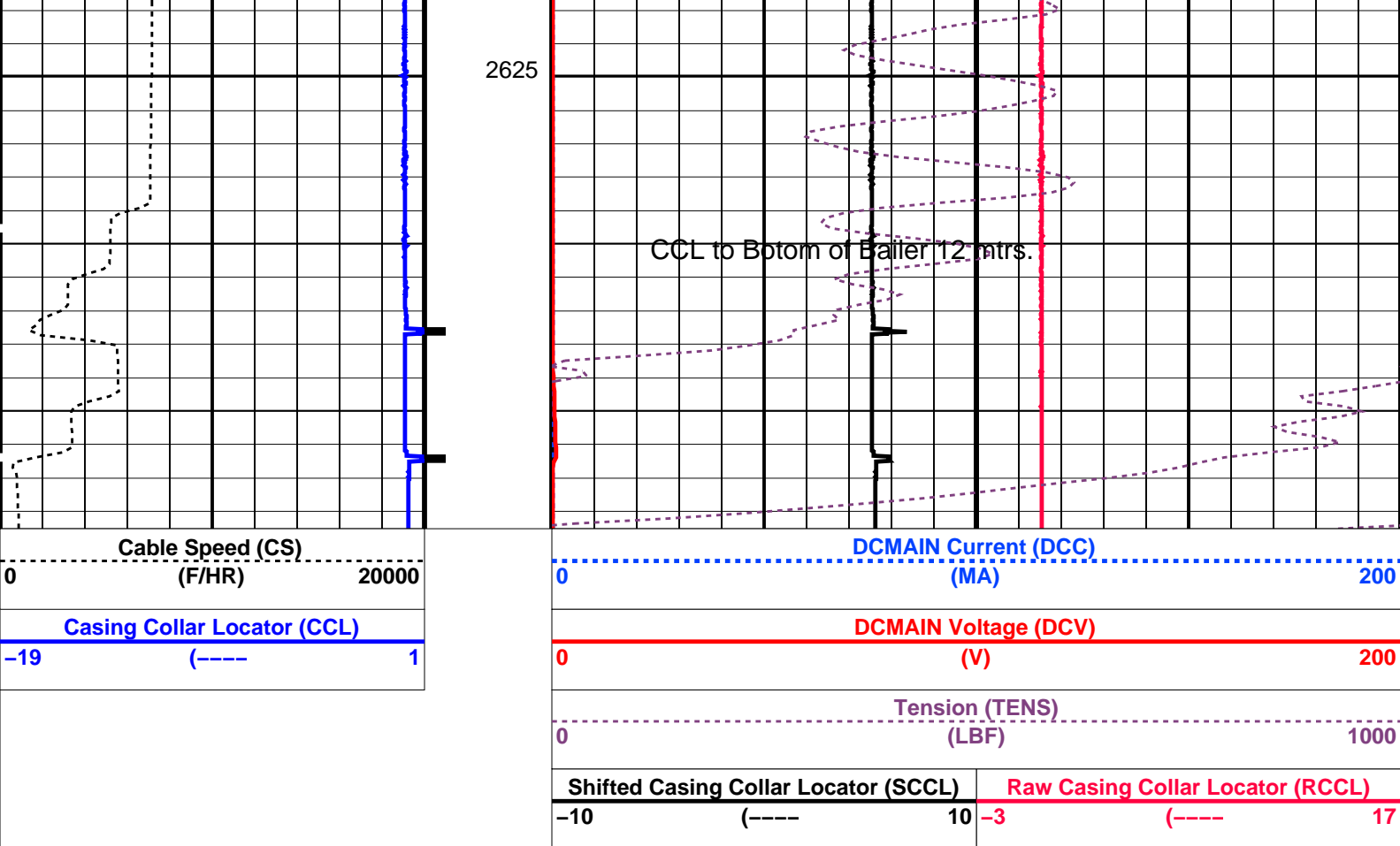
| | |
|-----------------------------|------|
| Cable Speed (CS) | |
| 0 | 5000 |
| (F/HR) | |
| Casing Collar Locator (CCL) | |
| -19 | 1 |
| (---- | |
| Gamma Ray (GR) | |
| 0 | 150 |
| (GAPI) | |
| CCL | |
| From CCL to T1 | |



| | |
|-----------------------------|------|
| Strain Gauge Pressure (SGP) | |
| 2550 | 2650 |
| (PSIA) | |
| Temperature (TEMP_MWPT) | |
| 200 | 220 |
| (DEGF) | |
| Strain Gauge Pressure (SGP) | |
| 0 | 20 |
| (PSIA) | |
| Temperature (TEMP_MWPT) | |
| 0 | 2 |
| (DEGF) | |
| Tension (TENS) | |

| | | | |
|--|--|--|--|
| (TEMP MWPT) (DEGF) | | 0 (LBF) 2000 | |
| | | Pressure (SGP) (PSIA) | |
| PIP SUMMARY | | | |
| Time Mark Every 60 S | | | |
| Parameters | | | |
| DLIS Name | Description | Value | |
| MWPT-CA: MEASUREMENT WHILE PERFORATING TOOL | | | |
| DEVI_FL_CORR | Deviation Angle for Flow Line Correction | 0 | DEG |
| FLD | Flow Line Density | 1 | G/C3 |
| MWPT_NULL_SOURCE | MWPT NULL Temperature Source | TEMS | |
| MWPT_NULL_TEMP | MWPT NULL Temperature | 0.0 | DEGC |
| Format: MWP | Vertical Scale: 1:200 | Graphics File Created: 09-Apr-2008 10:59 | |
| OP System Version: 15C0-309 | | | |
| MCM | | | |
| MWP_GUN | SRPC-3546-Q1_2008_OP15 | MWPT-CA | SRPC-3546-Q1_2008_OP15 |
| MWGT-AA | SRPC-3546-Q1_2008_OP15 | | |
| Output DLIS Files | | | |
| DEFAULT | PERFO_056LUP | FN:54 | PRODUCER 09-Apr-2008 10:59 |
| <div><div>Schlumberger</div><div>Dump Bailer Water</div><div>MAXIS Field Log</div></div> | | | |
| Input DLIS Files | | | |
| DEFAULT | PERFO_048LUP | FN:46 | PRODUCER 09-Apr-2008 07:47 2635.5 M 2563.2 M |
| Output DLIS Files | | | |
| DEFAULT | PERFO_049PUP | FN:47 | PRODUCER 09-Apr-2008 07:53 2638.5 M 2566.7 M |
| OP System Version: 15C0-309 | | | |
| MCM | | | |
| SHM_GUN | SRPC-3546-Q1_2008_OP15 | CCL-L | SRPC-3546-Q1_2008_OP15 |
| PIP SUMMARY | | | |
| Casing Collars | | | |
| Time Mark Every 60 S | | | |
| | | Shifted Casing Collar Locator (SCCL) | Raw Casing Collar Locator (RCCL) |
| | | -10 (---- 10 | -3 (---- 17 |
| | | Tension (TENS) | |
| | | 0 (LBF) 1000 | |
| Casing Collar Locator (CCL) | | DCMAIN Voltage (DCV) | |
| -19 (---- 1 | | 0 (V) 200 | |
| Cable Speed (CS) | | DCMAIN Current (DCC) | |
| 0 (F/HR) 20000 | | 0 (MA) 200 | |





PIP SUMMARY

← Casing Collars

Time Mark Every 60 S

Parameters

| DLIS Name | Description | Value |
|------------------------------|---------------------------|--------|
| CCL-L: Casing Collar Locator | | |
| CCLD | CCL reset delay | 12 IN |
| CCLT | CCL Detection Level | 0.3 V |
| System and Miscellaneous | | |
| DO | Depth Offset for Playback | 3.0 M |
| PP | Playback Processing | NORMAL |

Format: PERFO Vertical Scale: 1:200

Graphics File Created: 09-Apr-2008 07:53

OP System Version: 15C0-309

MCM

SHM_GUN SRPC-3546-Q1_2008_OP15 CCL-L SRPC-3546-Q1_2008_OP15

Input DLIS Files

DEFAULT PERFO_048LUP FN:46 PRODUCER 09-Apr-2008 07:47 2635.5 M 2563.2 M

Output DLIS Files

DEFAULT PERFO_049PUP FN:47 PRODUCER 09-Apr-2008 07:53

Schlumberger

Job Event Summary

Schlumberger Job Event Summary

| Time | Elapsed Time | Depth (M) | File |
|-----------------|-------------------------|-------------------|--------------|
| Log Pass (down) | 8-Apr-2008 13:19 000:20 | 930.4 – 2644.0 | PERFO_025LDP |
| Log Pass (up) | 8-Apr-2008 13:40 000:03 | 2644.0 – 2621.7 | PERFO_026LUP |
| Log Pass (up) | 8-Apr-2008 13:44 000:03 | 2644.3 – 2628.6 | PERFO_027LUP |
| Log Pass (up) | 8-Apr-2008 13:48 000:06 | 2642.2 – 2598.0 | PERFO_028LUP |
| Log Pass (up) | 8-Apr-2008 13:54 000:21 | 2640.2 – 2533.8 | PERFO_029LUP |
| Station Log | 8-Apr-2008 13:59 000:07 | 2628.7 – 1.0 | PERFO_030LTP |
| Simulated Log | 8-Apr-2008 15:15 000:00 | | CCL_031LUP |
| Log Pass (up) | 8-Apr-2008 15:16 000:03 | 12192.0 – 12191.5 | CCL_032LUP |
| Log Pass (down) | 8-Apr-2008 15:32 000:46 | 3.5 – 2601.6 | CCL_033LDP |
| Log Pass (up) | 8-Apr-2008 16:18 000:03 | 2603.4 – 2571.9 | CCL_034LUP |
| Log Pass (down) | 8-Apr-2008 16:22 000:04 | 2580.3 – 2640.5 | CCL_036LDP |
| Log Pass (up) | 8-Apr-2008 16:27 000:03 | 2640.5 – 2596.4 | CCL_037LUP |
| Simulated Log | 8-Apr-2008 16:36 000:32 | | CCL_038LUP |
| Simulated Log | 8-Apr-2008 17:10 000:01 | | CCL_039LUP |
| Log Pass (up) | 8-Apr-2008 17:11 000:04 | 2615.9 – 2560.9 | CCL_040LUP |



7" MPBT Plug
Set @ 2643m MDKB

MAXIS Field Log

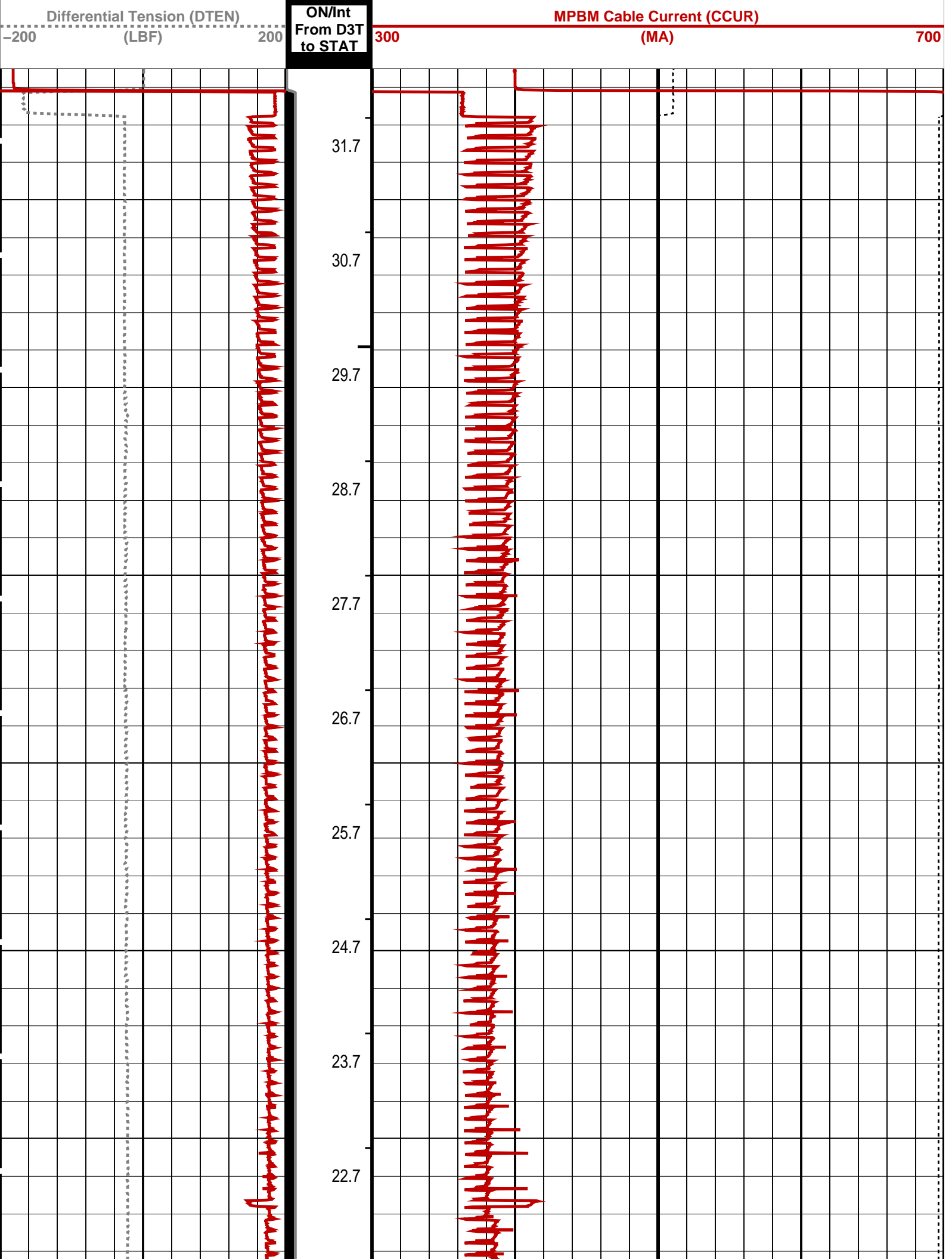
Output DLIS Files

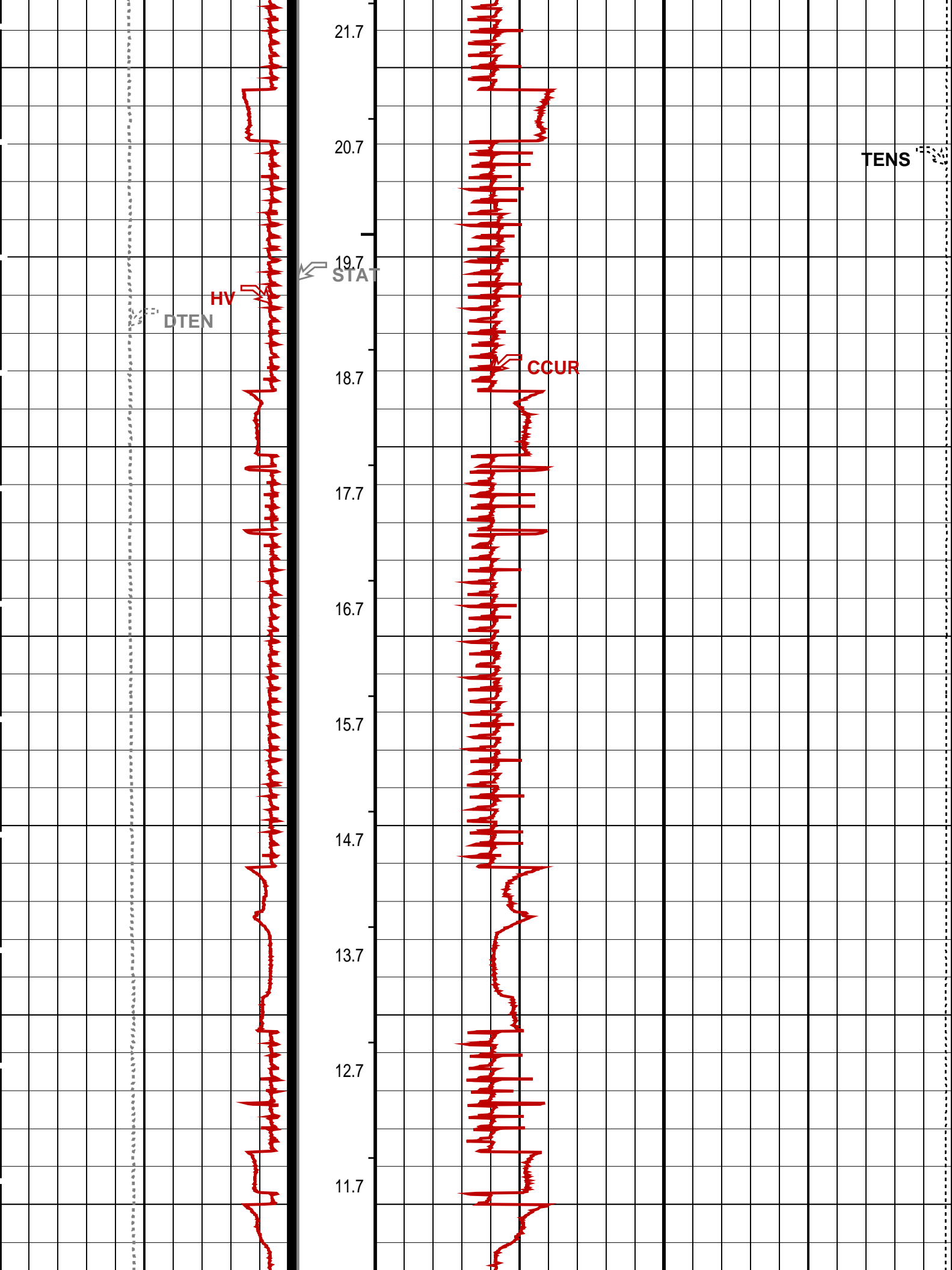
| | | | | |
|-----------------------------|------------------------|---------|------------------------|-------------------|
| DEFAULT | CCL_038LUP | FN:36 | PRODUCER | 08-Apr-2008 16:36 |
| OP System Version: 15C0-309 | | | | |
| MCM | | | | |
| MPEX-DA | SRPC-3546-Q1_2008_OP15 | MPSU-CA | SRPC-3546-Q1_2008_OP15 | |
| CCL-L | SRPC-3546-Q1_2008_OP15 | | | |

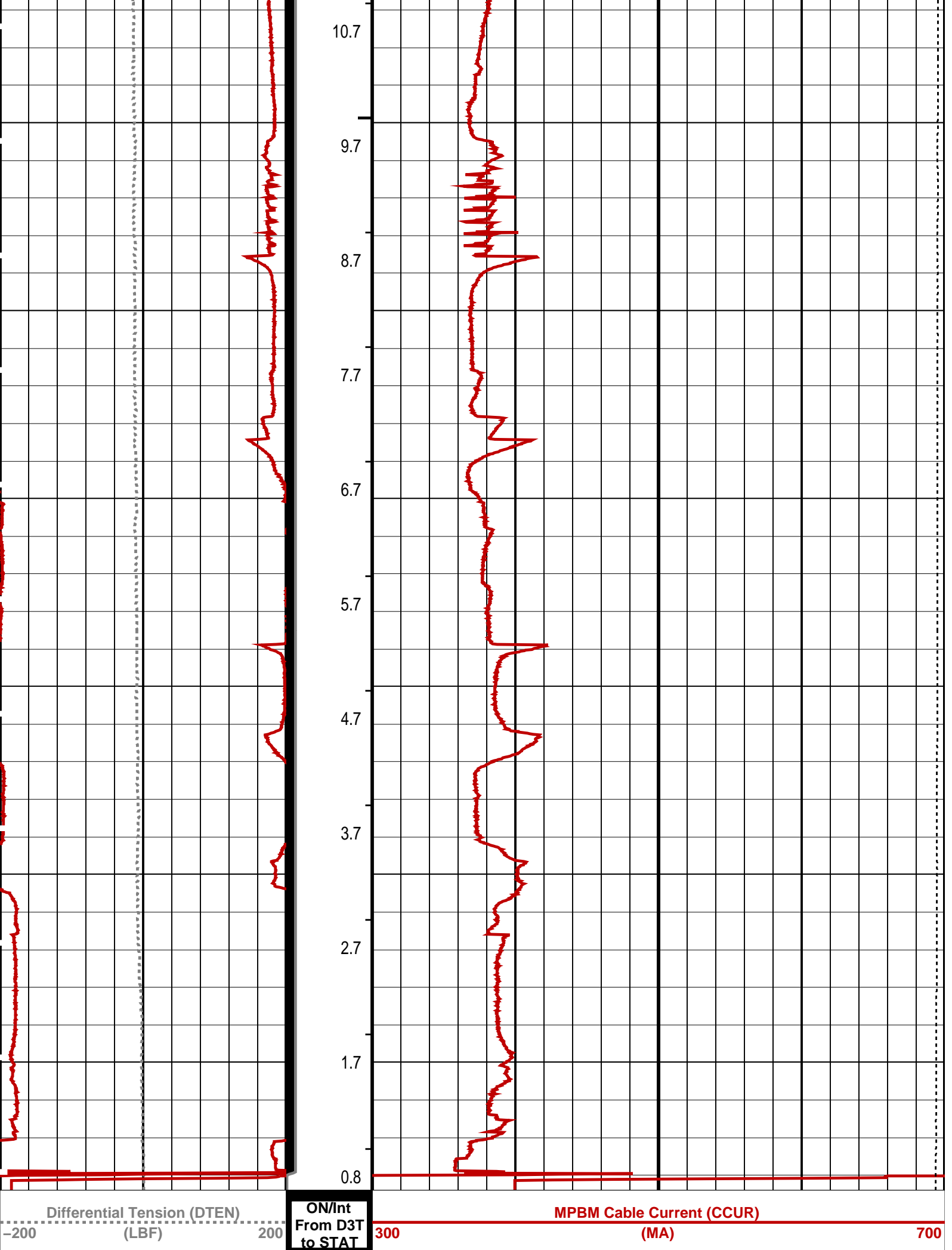
PIP SUMMARY

⊖ MPSU Run Time Every 1 MN
⊖ MPSU Run Time Every 10 MN

| | | | |
|------------------------|-----|------------------------|----------------|
| Time Mark Every 60 S | | RUN Time (RTIM) (MN) | |
| MPSU Head Voltage (HV) | | MPSU Run Status (STAT) | Tension (TENS) |
| 200 | (V) | 300 | 2000 (LBF) 0 |
| | | 0 (----10 | |







| | | | | | |
|------------------------|-----|------------------------|----------------|-------|---|
| | | | | | |
| MPSU Head Voltage (HV) | | MPSU Run Status (STAT) | Tension (TENS) | | |
| 200 | (V) | 300 | 2000 | (LBF) | 0 |
| | | 0 (----10 | | | |
| | | RUN Time (RTIM) (MN) | | | |


| | | | | | |
|-----------------------------|--|--|--|--|--|
| PIP SUMMARY | | | | | |
| └ MPSU Run Time Every 1 MN | | | | | |
| └ MPSU Run Time Every 10 MN | | | | | |
| Time Mark Every 60 S | | | | | |

| | | |
|---|------------------|-------|
| Parameters | | |
| DLIS Name | Description | Value |
| MPSU-CA: MECHANICAL PLUGBACK SETTING UNIT | | |
| IPUMP | Intensifier Pump | TRUE |

| | | |
|--------------|-----------------------|--|
| Format: MPBT | Vertical Scale: 1:600 | Graphics File Created: 08-Apr-2008 16:36 |
|--------------|-----------------------|--|

| | | | |
|-----------------------------|------------------------|---------|------------------------|
| OP System Version: 15C0-309 | | | |
| MCM | | | |
| MPEX-DA | SRPC-3546-Q1_2008_OP15 | MPSU-CA | SRPC-3546-Q1_2008_OP15 |
| CCL-L | SRPC-3546-Q1_2008_OP15 | | |

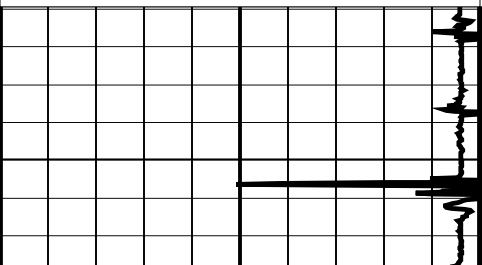
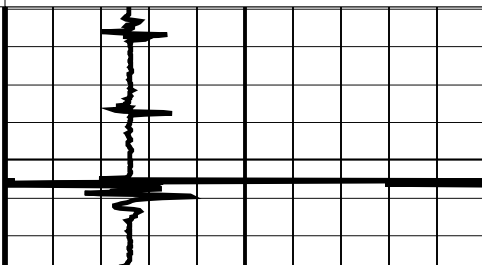
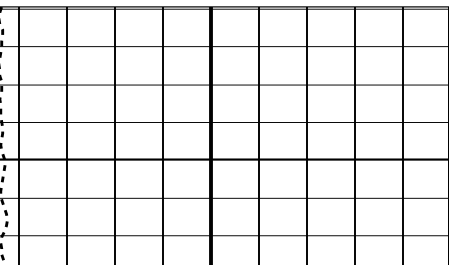
| | | | |
|-------------------|------------|-------|----------------------------|
| Output DLIS Files | | | |
| DEFAULT | CCL_038LUP | FN:36 | PRODUCER 08-Apr-2008 16:36 |

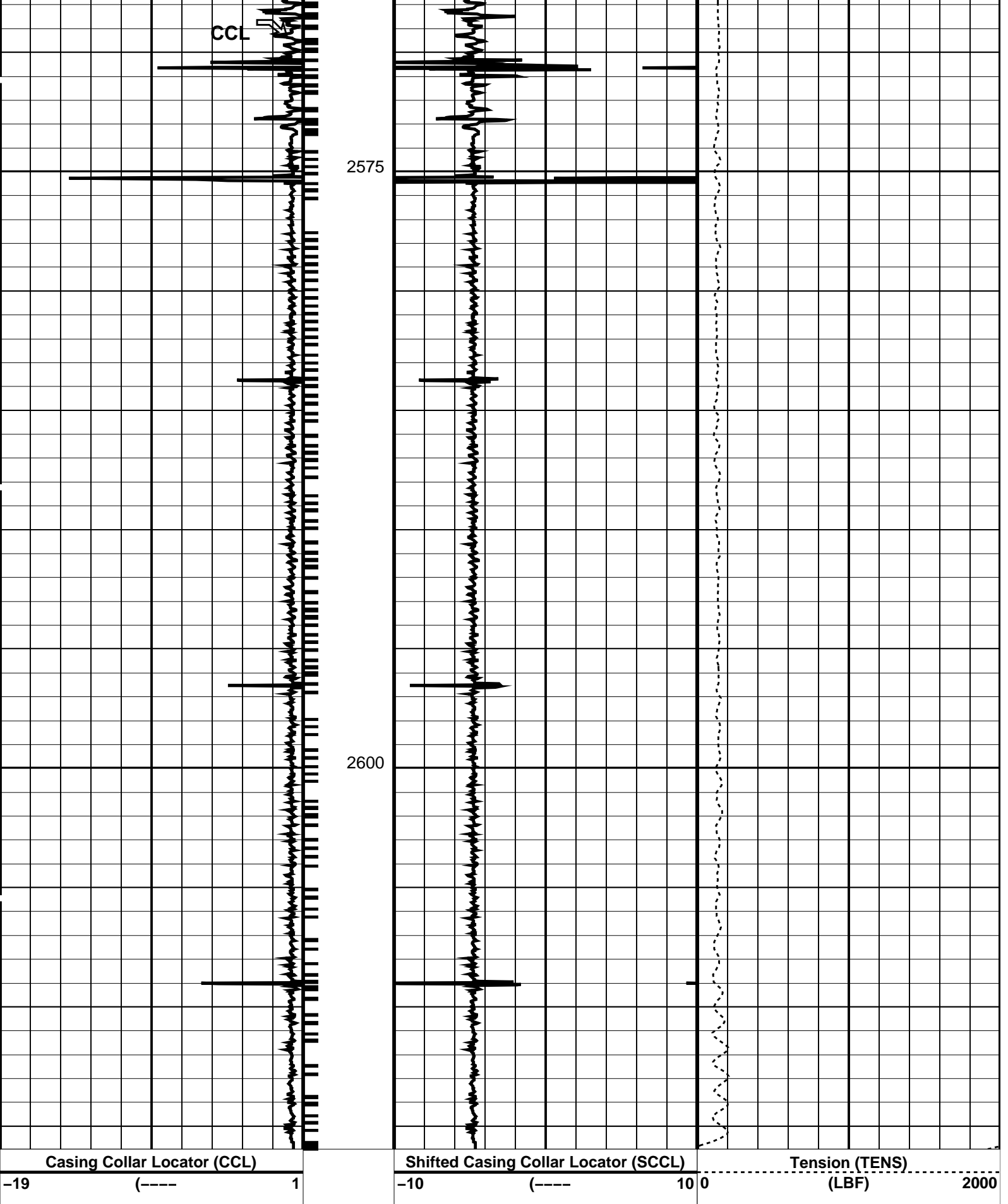
| | | | |
|---|--|----------------------------------|--|
|  | | 7" MPBT Plug Correlation Pass | |
| MAXIS Field Log | | | |

| | | | | | |
|-------------------|------------|-------|----------|-------------------|-------------------|
| Output DLIS Files | | | | | |
| DEFAULT | CCL_040LUP | FN:38 | PRODUCER | 08-Apr-2008 17:11 | 2615.9 M 2560.9 M |

| | | | |
|-----------------------------|------------------------|---------|------------------------|
| OP System Version: 15C0-309 | | | |
| MCM | | | |
| MPEX-DA | SRPC-3546-Q1_2008_OP15 | MPSU-CA | SRPC-3546-Q1_2008_OP15 |
| CCL-L | SRPC-3546-Q1_2008_OP15 | | |

| | |
|----------------------|--|
| PIP SUMMARY | |
| └ Casing Collars | |
| Time Mark Every 60 S | |

| | | | | | |
|---|----------|--|-------------|---|------------|
| Casing Collar Locator (CCL) | | Shifted Casing Collar Locator (SCCL) | | Tension (TENS) | |
| -19 | (----) 1 | -10 | (----) 10 0 | 0 | (LBF) 2000 |
|  | |  | |  | |




PIP SUMMARY

Time Mark Every 60 S

└─ Casing Collars

Parameters

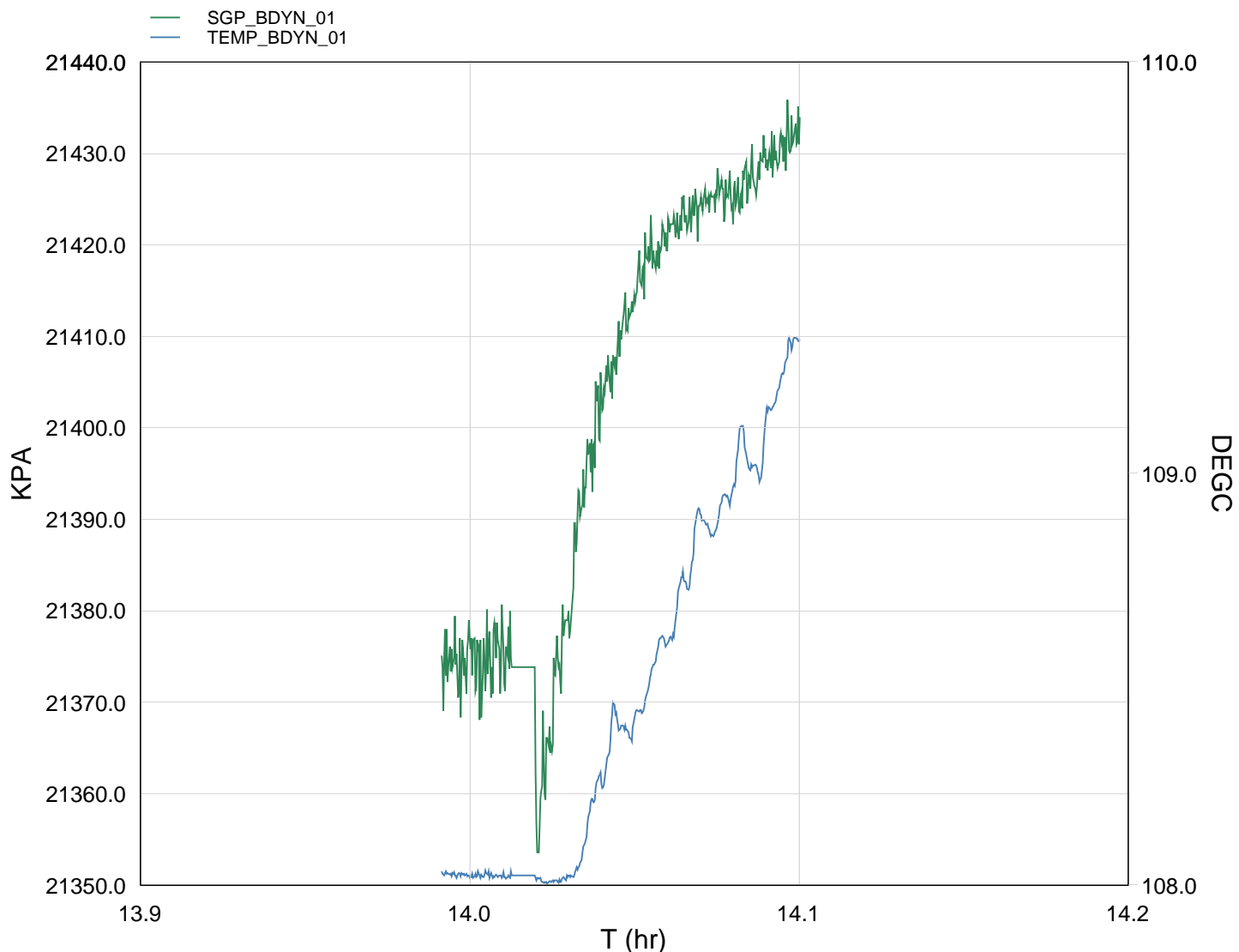
| DLIS Name | Description | Value |
|---|------------------------|--|
| CCL-L: Casing Collar Locator | | |
| CCLD | CCL reset delay | 12 IN |
| CCLT | CCL Detection Level | 0.3 V |
| Format: PERFO | Vertical Scale: 1:200 | Graphics File Created: 08-Apr-2008 17:11 |
| OP System Version: 15C0-309 MCM | | |
| MPEX-DA | SRPC-3546-Q1_2008_OP15 | MPSU-CA |
| CCL-L | SRPC-3546-Q1_2008_OP15 | SRPC-3546-Q1_2008_OP15 |
| Output DLIS Files | | |
| DEFAULT | CCL_040LUP | FN:38 PRODUCER 08-Apr-2008 17:11 |



GUN # 1

2632.2m to 2633m MDKB

MAXIS Field Log



| TIME | DEGF | PSIA |
|--------|--------|----------|
| 2780.0 | 228.75 | 3108.594 |
| 2760.0 | 228.49 | 3108.239 |
| 2740.0 | 228.24 | 3107.533 |
| 2720.0 | 228.24 | 3107.545 |
| 2700.0 | 227.99 | 3107.585 |
| 2680.0 | 228.04 | 3107.138 |
| 2660.0 | 227.75 | 3107.095 |
| 2640.0 | 227.48 | 3106.532 |
| 2620.0 | 227.19 | 3106.631 |
| 2600.0 | 227.09 | 3105.591 |
| 2580.0 | 226.98 | 3104.368 |
| 2560.0 | 226.75 | 3103.111 |
| 2540.0 | 226.44 | 3100.959 |
| 2520.0 | 226.42 | 3100.188 |
| 2500.0 | 226.44 | 3099.537 |
| 2480.0 | 226.44 | 3100.022 |
| 2460.0 | 226.44 | 3100.130 |
| 2440.0 | 226.45 | 3100.543 |
| 2420.0 | 226.45 | 3100.196 |
| 2400.0 | 226.45 | 3099.866 |



Shooting Pass

MAXIS Field Log

Company: Esso Australia Pty Ltd.

Well: W-18a

Output DLIS Files

DEFAULT

PERFO_029LUP

FN:27

PRODUCER

08-Apr-2008 13:54

2640.2 M

2533.8 M

OP System Version: 15C0-309

MCM

MWP_GUN

SRPC-3546-Q1_2008_OP15

MWPT-CA

SRPC-3546-Q1_2008_OP15

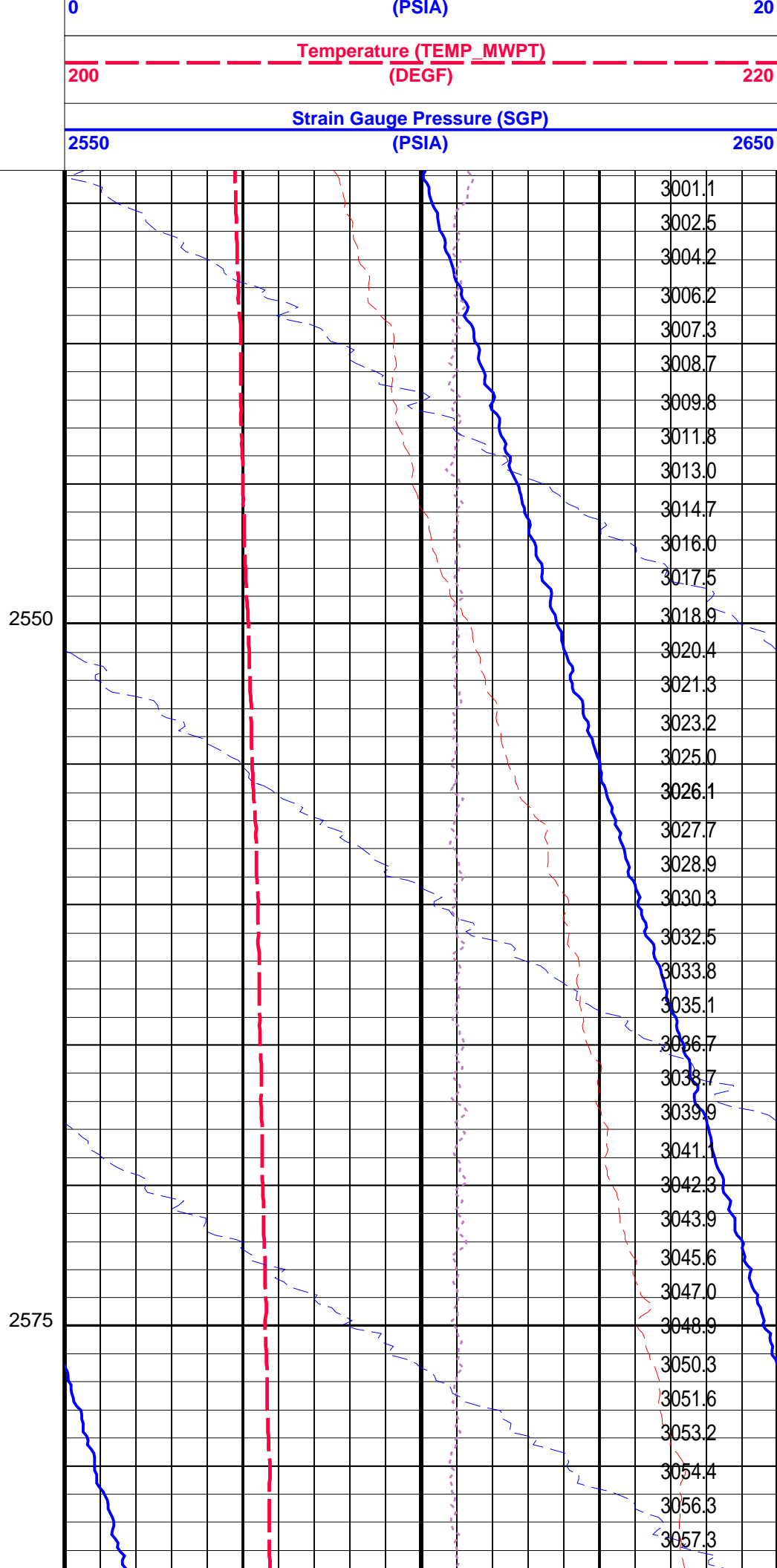
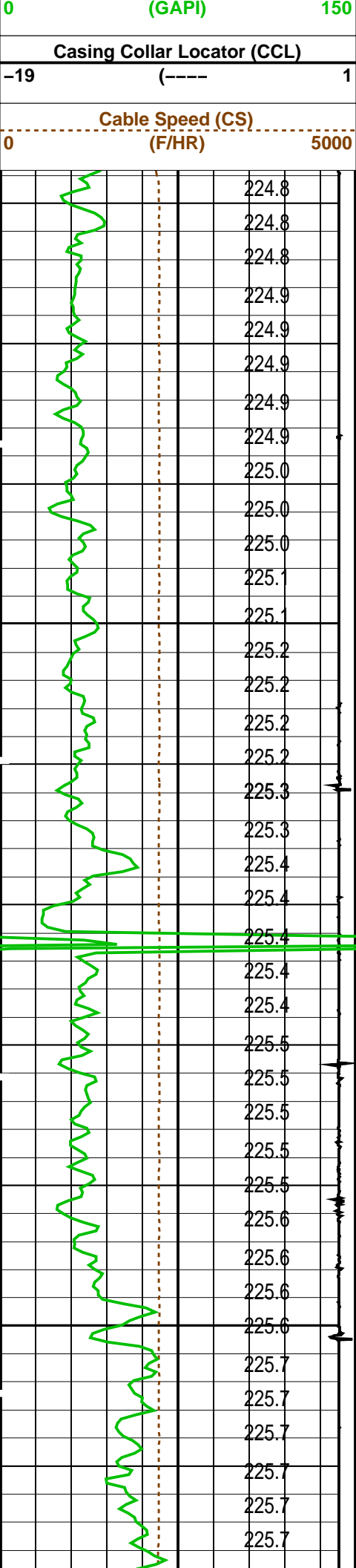
MWGT-AA

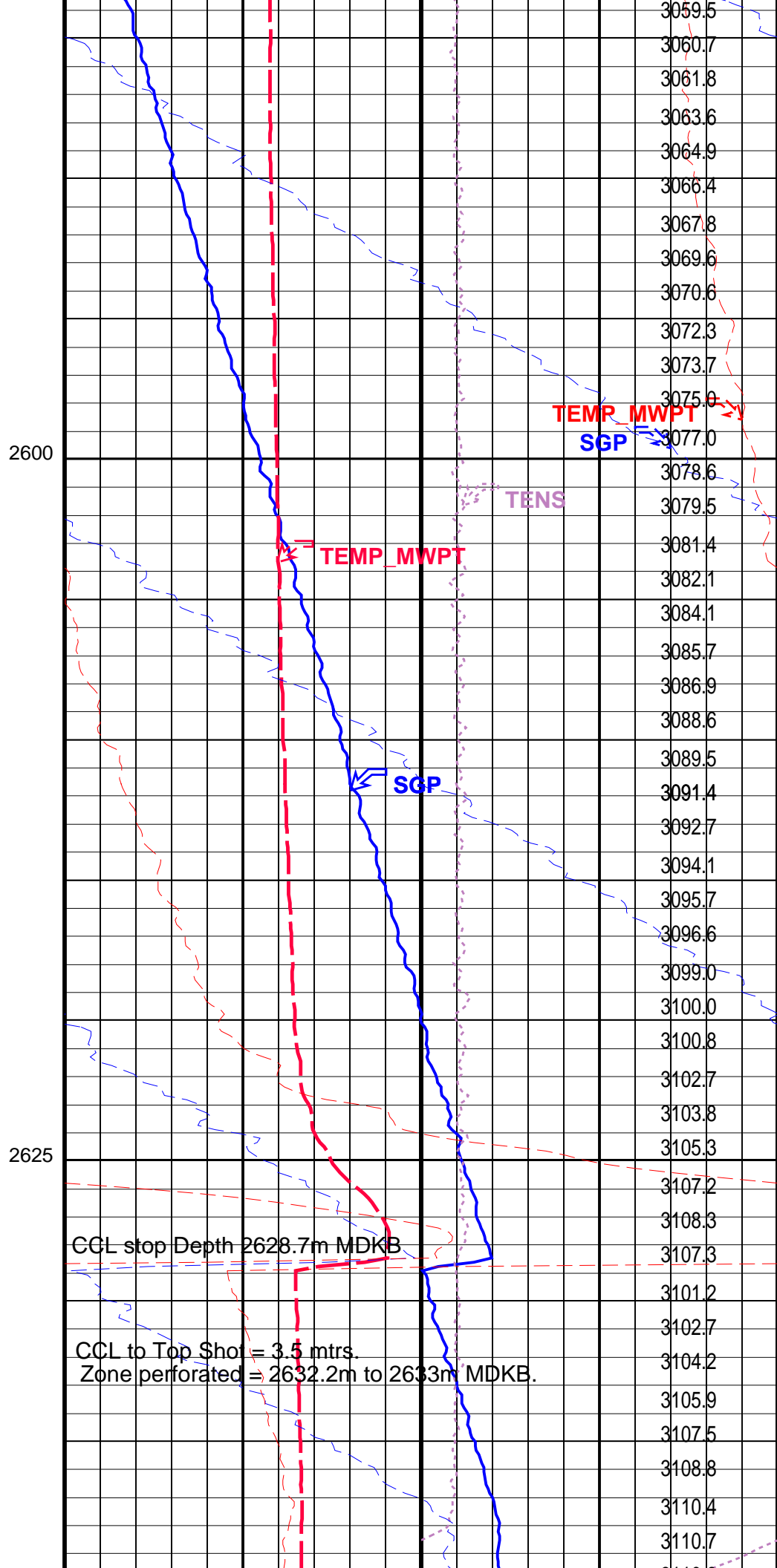
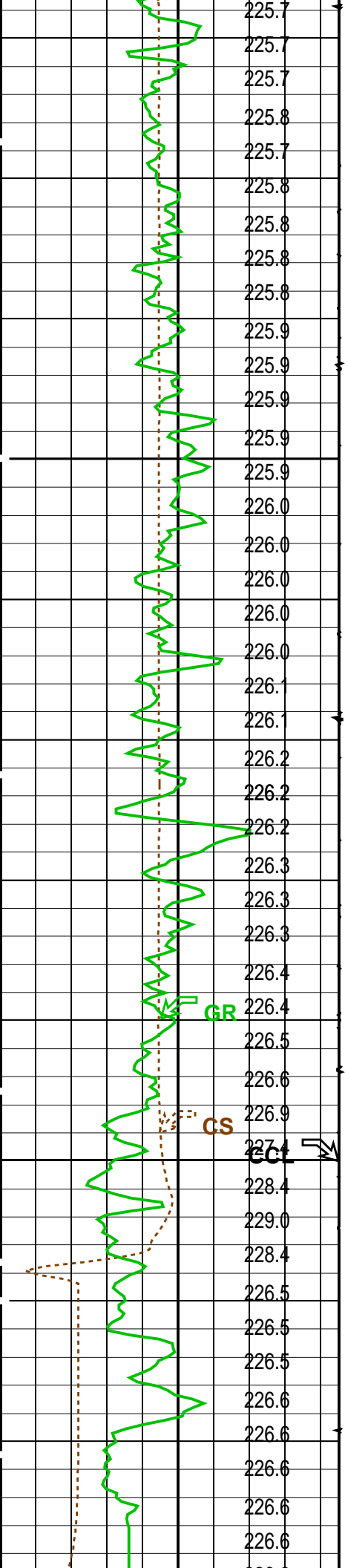
SRPC-3546-Q1_2008_OP15

PIP SUMMARY

Time Mark Every 60 S

| | | | |
|--------------------------------------|--|-----------------------------------|------|
| | | Pressure (SGP) (PSIA) | |
| Temperature (TEMP_MWPT) (DEGF) | | Tension (TENS) (LBF) | |
| | | 0 | 2000 |
| CCL From CCL to T1 | | Temperature (TEMP_MWPT) (DEGF) | |
| | | 0 | 2 |
| Gamma Ray (GR) | | Strain Gauge Pressure (SGP) | |
| | | | |





| | |
|---|--------------------------|
| 226.6 | 3110.6 |
| Cable Speed (CS) (F/HR) | 5000 |
| Casing Collar Locator (CCL) -19 (----) 1 | |
| Gamma Ray (GR) (GAPI) | 150 |
| CCL From CCL to T1 | |
| Temperature (TEMP_MWPT) (DEGF) | |
| | Pressure (SGP) (PSIA) |

| |
|----------------------|
| PIP SUMMARY |
| Time Mark Every 60 S |

| Parameters | | | |
|---|--|-------|------|
| DLIS Name | Description | Value | |
| MWPT-CA: MEASUREMENT WHILE PERFORATING TOOL | | | |
| DEVI_FL_CORR | Deviation Angle for Flow Line Correction | 0 | DEG |
| FLD | Flow Line Density | 1 | G/C3 |
| MWPT_NULL_SOURCE | MWPT NULL Temperature Source | TEMS | |
| MWPT_NULL_TEMP | MWPT NULL Temperature | 0.0 | DEGC |

| | | |
|-------------|-----------------------|--|
| Format: MWP | Vertical Scale: 1:200 | Graphics File Created: 08-Apr-2008 13:54 |
|-------------|-----------------------|--|

| | | | |
|-----------------------------|------------------------|---------|------------------------|
| OP System Version: 15C0-309 | | | |
| MCM | | | |
| MWP_GUN | SRPC-3546-Q1_2008_OP15 | MWPT-CA | SRPC-3546-Q1_2008_OP15 |
| MWGT-AA | SRPC-3546-Q1_2008_OP15 | | |

| Output DLIS Files | | | |
|-------------------|--------------|-------|----------------------------|
| DEFAULT | PERFO_029LUP | FN:27 | PRODUCER 08-Apr-2008 13:54 |

Schlumberger

Correlation Pass

MAXIS Field Log

| | |
|----------------------------------|-------------|
| Company: Esso Australia Pty Ltd. | Well: W-18a |
|----------------------------------|-------------|

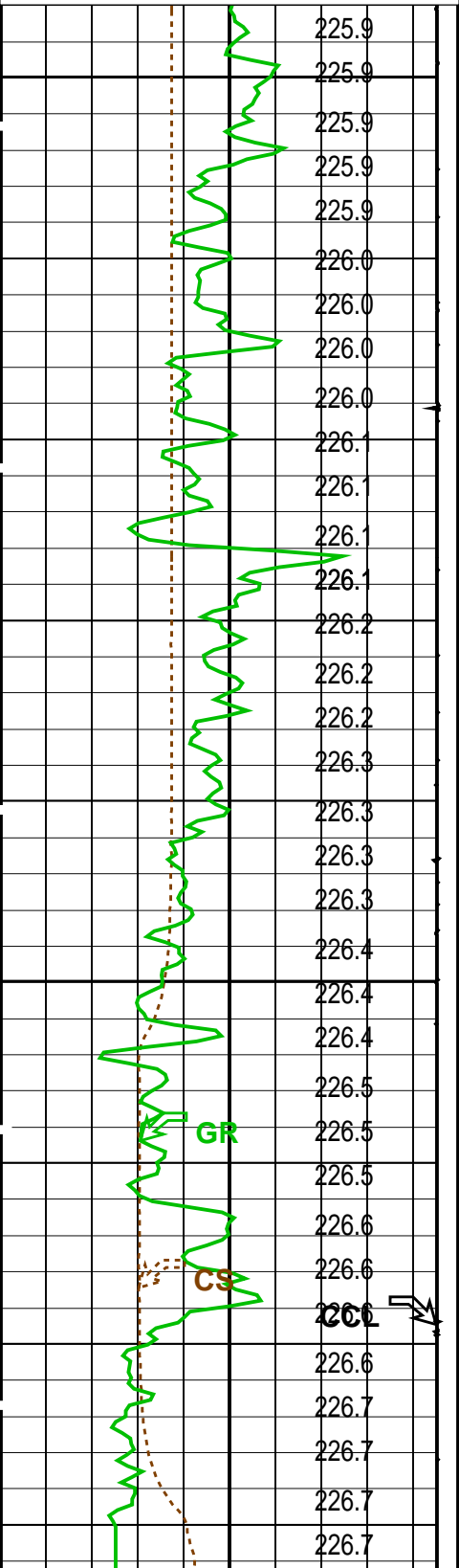
| Output DLIS Files | | | | | |
|-------------------|--------------|-------|----------|-------------------|-------------------|
| DEFAULT | PERFO_028LUP | FN:26 | PRODUCER | 08-Apr-2008 13:48 | 2642.2 M 2598.0 M |

| | | | |
|-----------------------------|------------------------|---------|------------------------|
| OP System Version: 15C0-309 | | | |
| MCM | | | |
| MWP_GUN | SRPC-3546-Q1_2008_OP15 | MWPT-CA | SRPC-3546-Q1_2008_OP15 |
| MWGT-AA | SRPC-3546-Q1_2008_OP15 | | |

| |
|-------------|
| PIP SUMMARY |
|-------------|

| | |
|----------------------|----------------|
| Time Mark Every 60 S | Pressure (SGP) |
|----------------------|----------------|

| Temperature (TEMP_MWPT) (DEGF) | | |
|-----------------------------------|-------|------|
| CCL From CCL to T1 | | |
| Gamma Ray (GR) (GAPI) | | |
| 0 | | 150 |
| Casing Collar Locator (CCL) | | |
| -19 | (---- | 1 |
| Cable Speed (CS) (F/HR) | | |
| 0 | | 5000 |



| Tension (TENS) (LBF) | | |
|---------------------------------------|--|------|
| 0 | | 2000 |
| Temperature (TEMP_MWPT) (DEGF) | | |
| 0 | | 2 |
| Strain Gauge Pressure (SGP) (PSIA) | | |
| 0 | | 20 |
| Temperature (TEMP_MWPT) (DEGF) | | |
| 200 | | 220 |
| Strain Gauge Pressure (SGP) (PSIA) | | |
| 2550 | | 2650 |

