

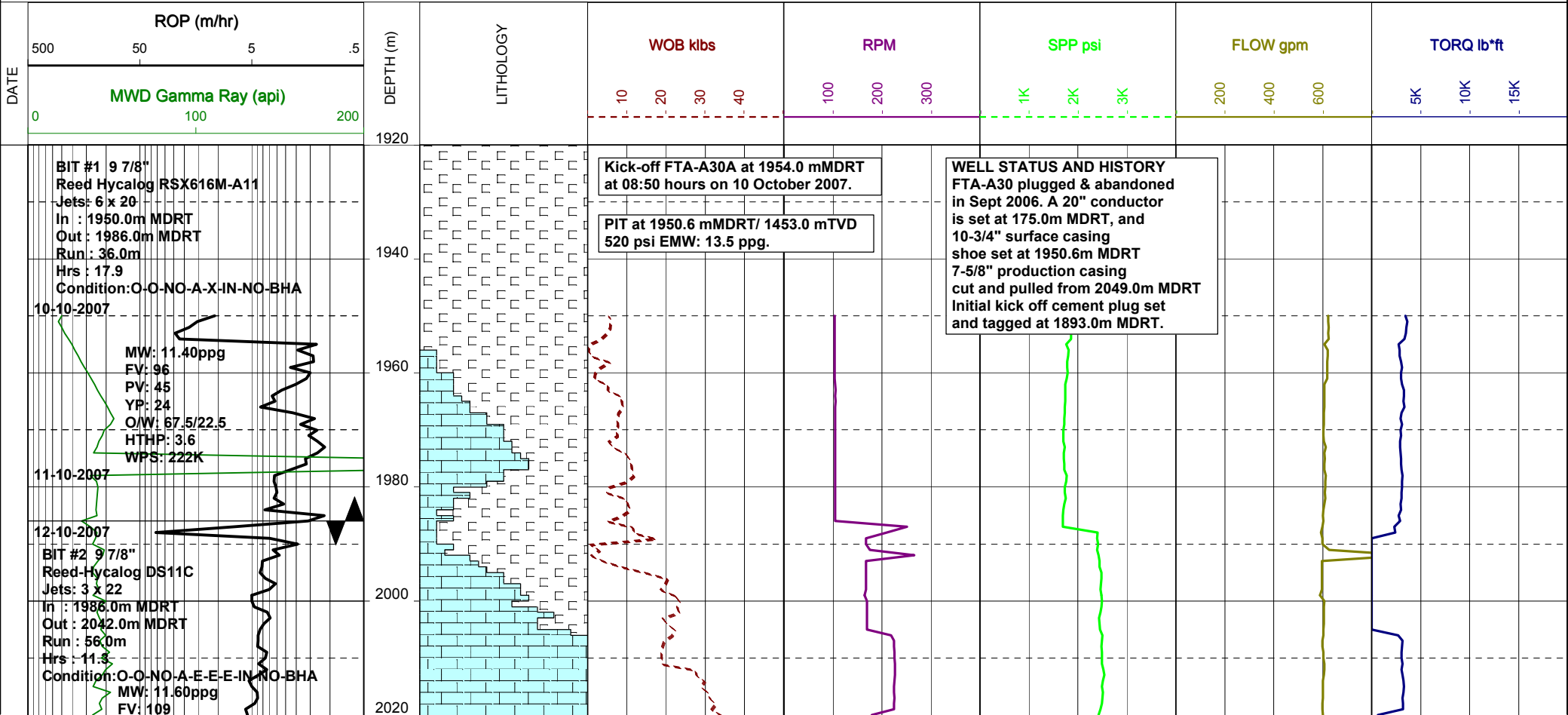
TO :(mt) 5120

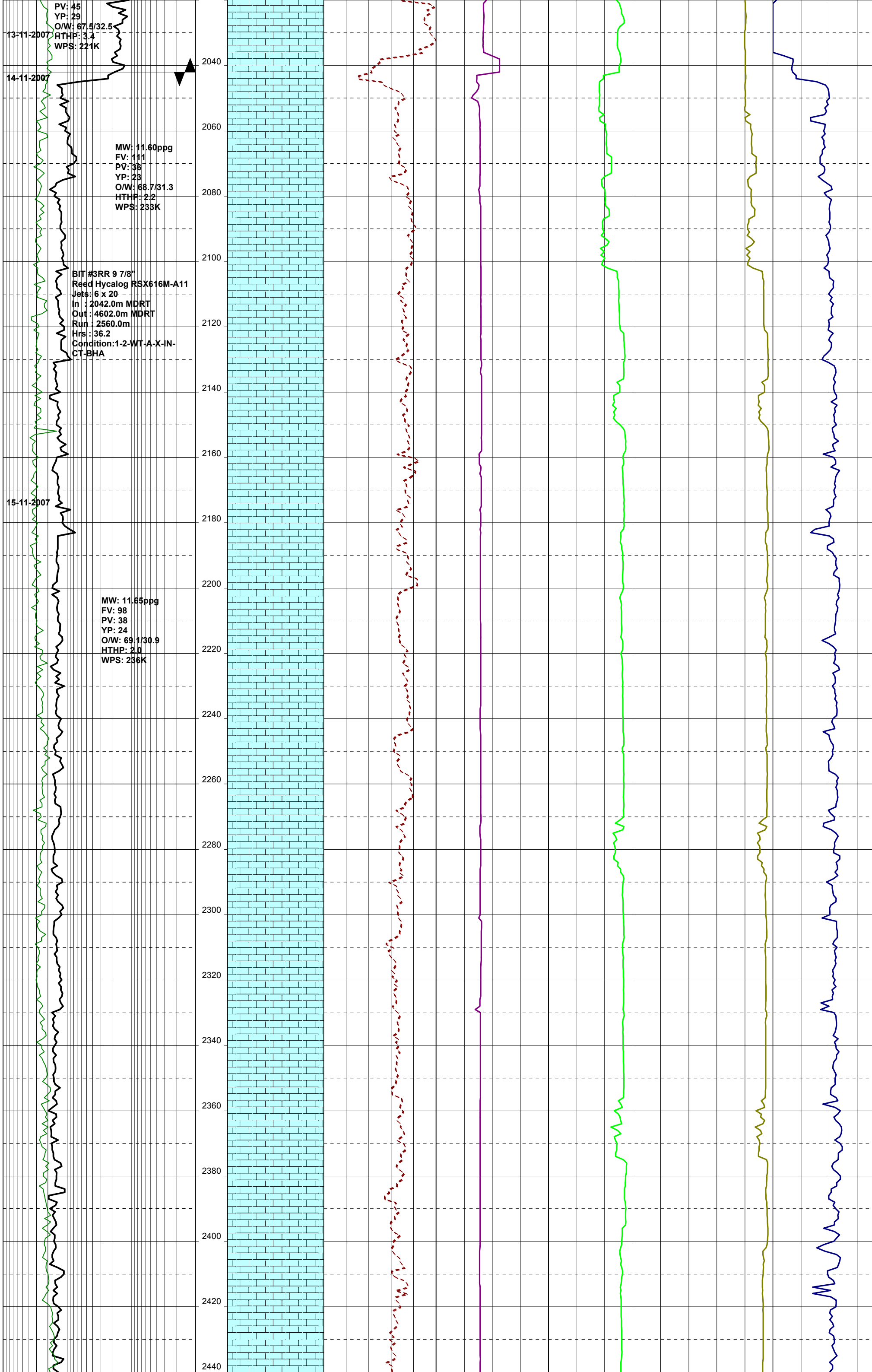
SCALE : 1/ 1000

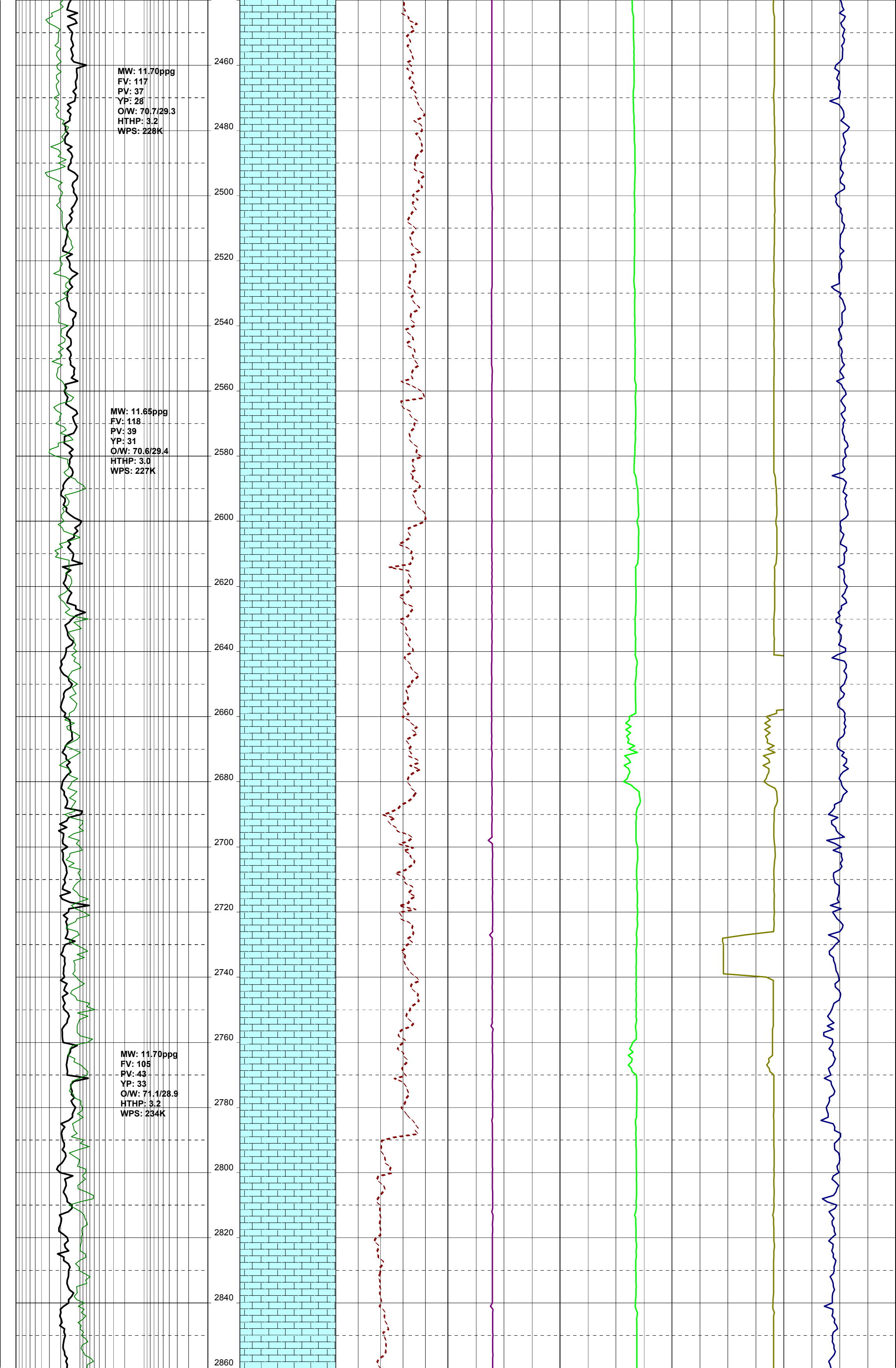
Country : AUSTRALIA

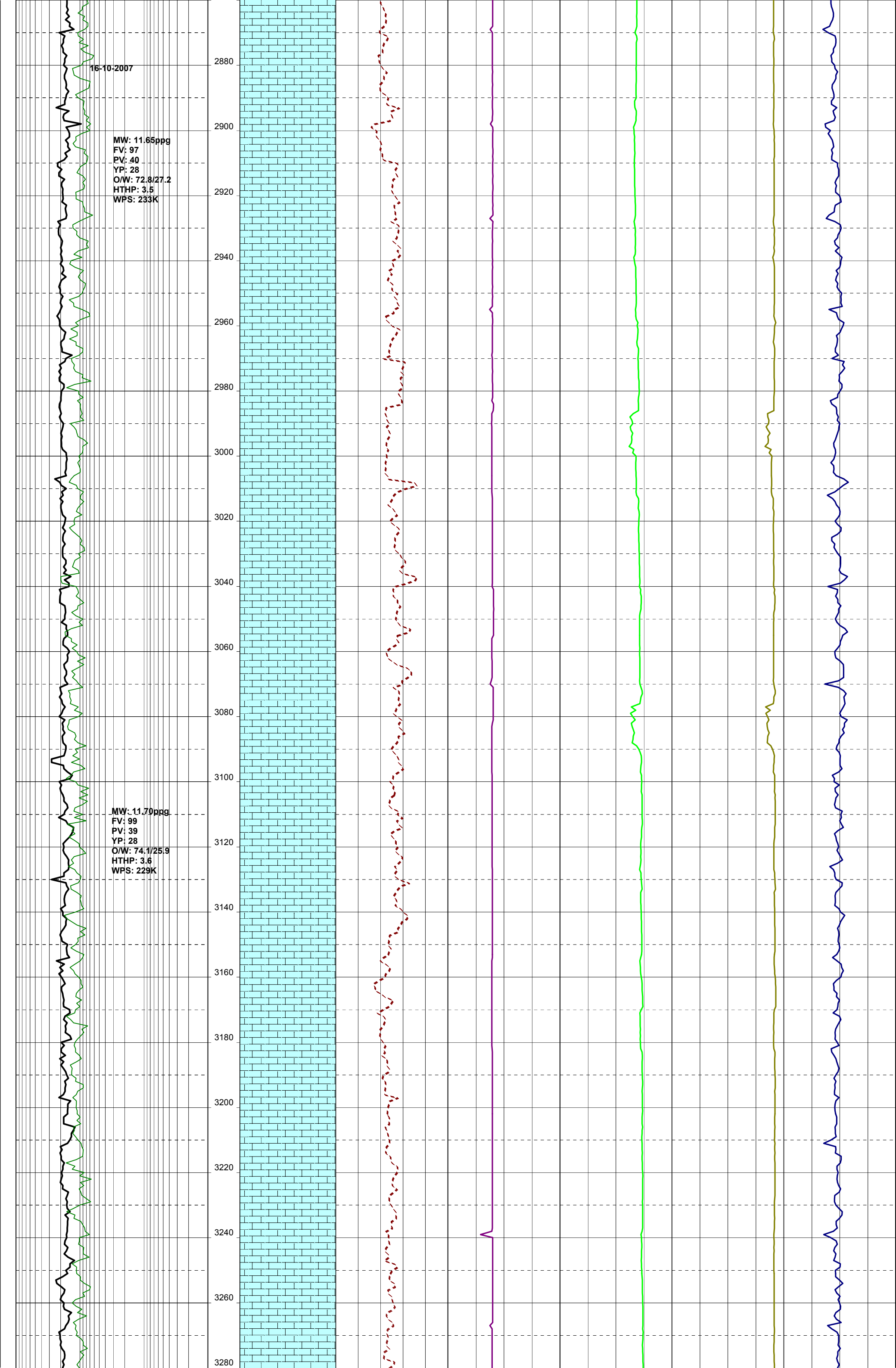
Final TD : 5097.00m MDRT
Final TVD : 2473.79m TVDRT

Generated by ALS Package









MW: 11.70ppg
FV: 101
PV: 37
YP: 29
O/W: 72.8/27.2
HTHP: 3.0
WPS: 227K

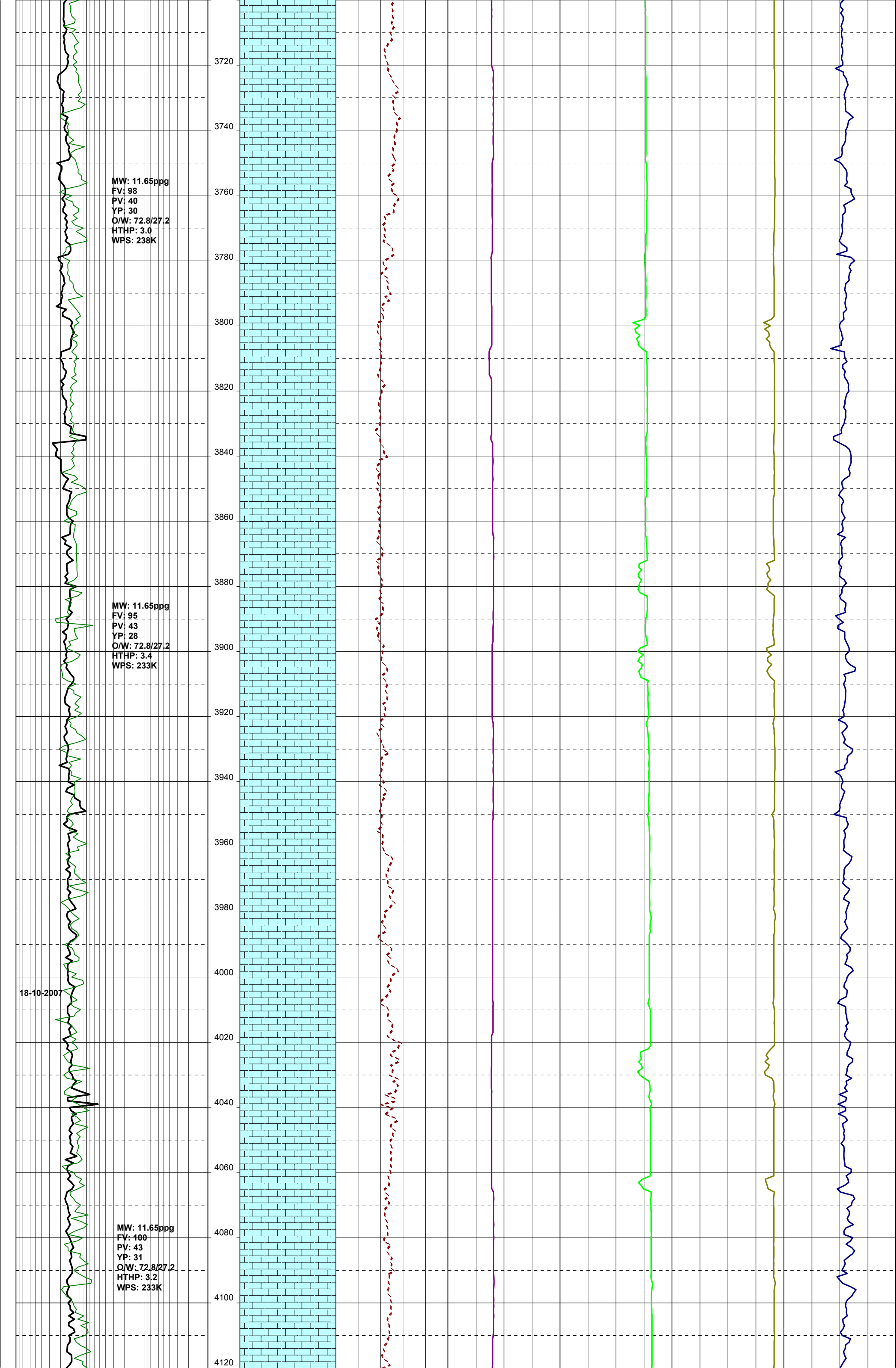
MW: 11.75ppg
FV: 115
PV: 39
YP: 28
O/W: 73.2/26.8
HTHP: 3.2
WPS: 231K

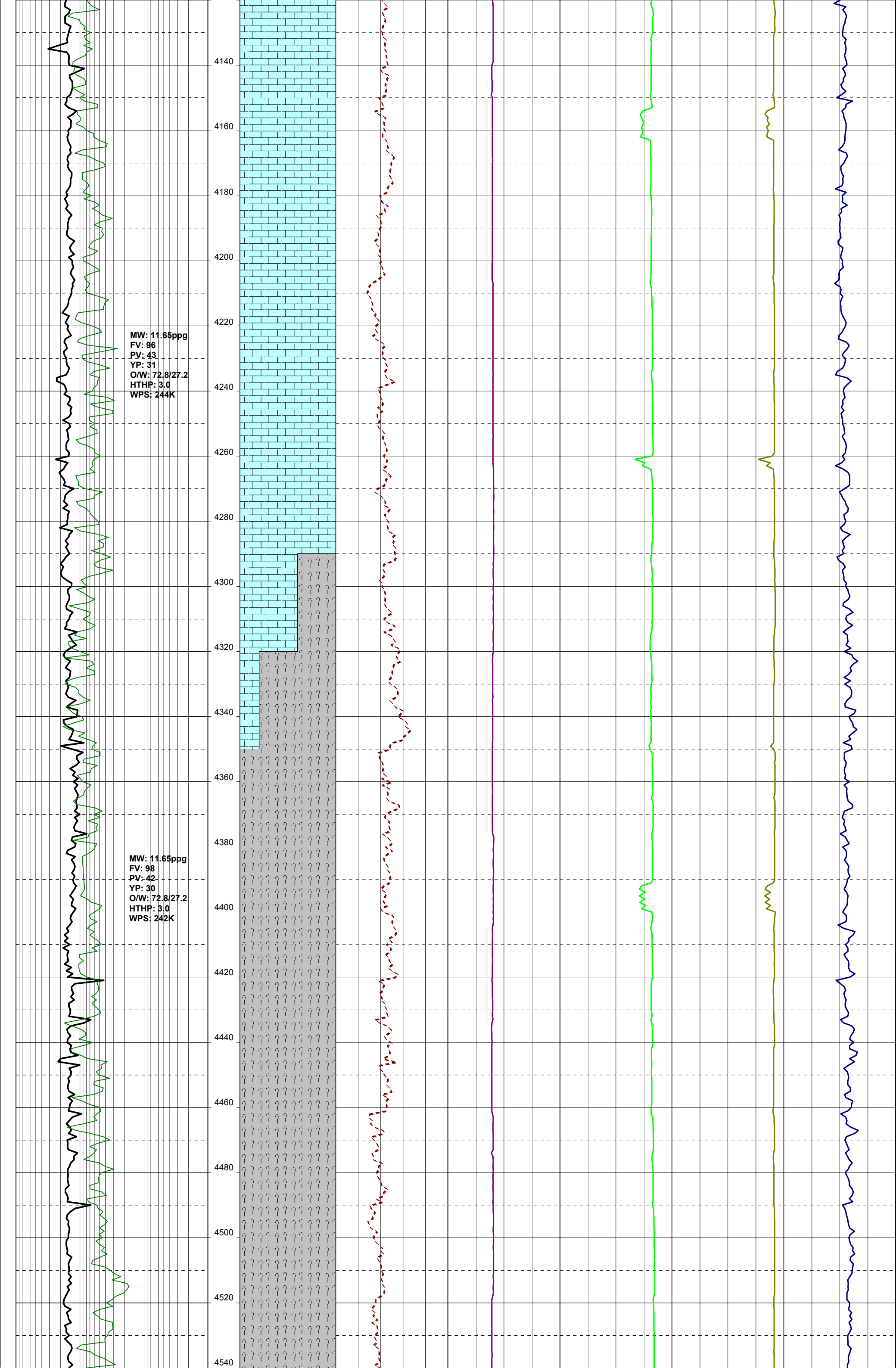
10 Stand Wiper trip
at 3548.0m MDRT

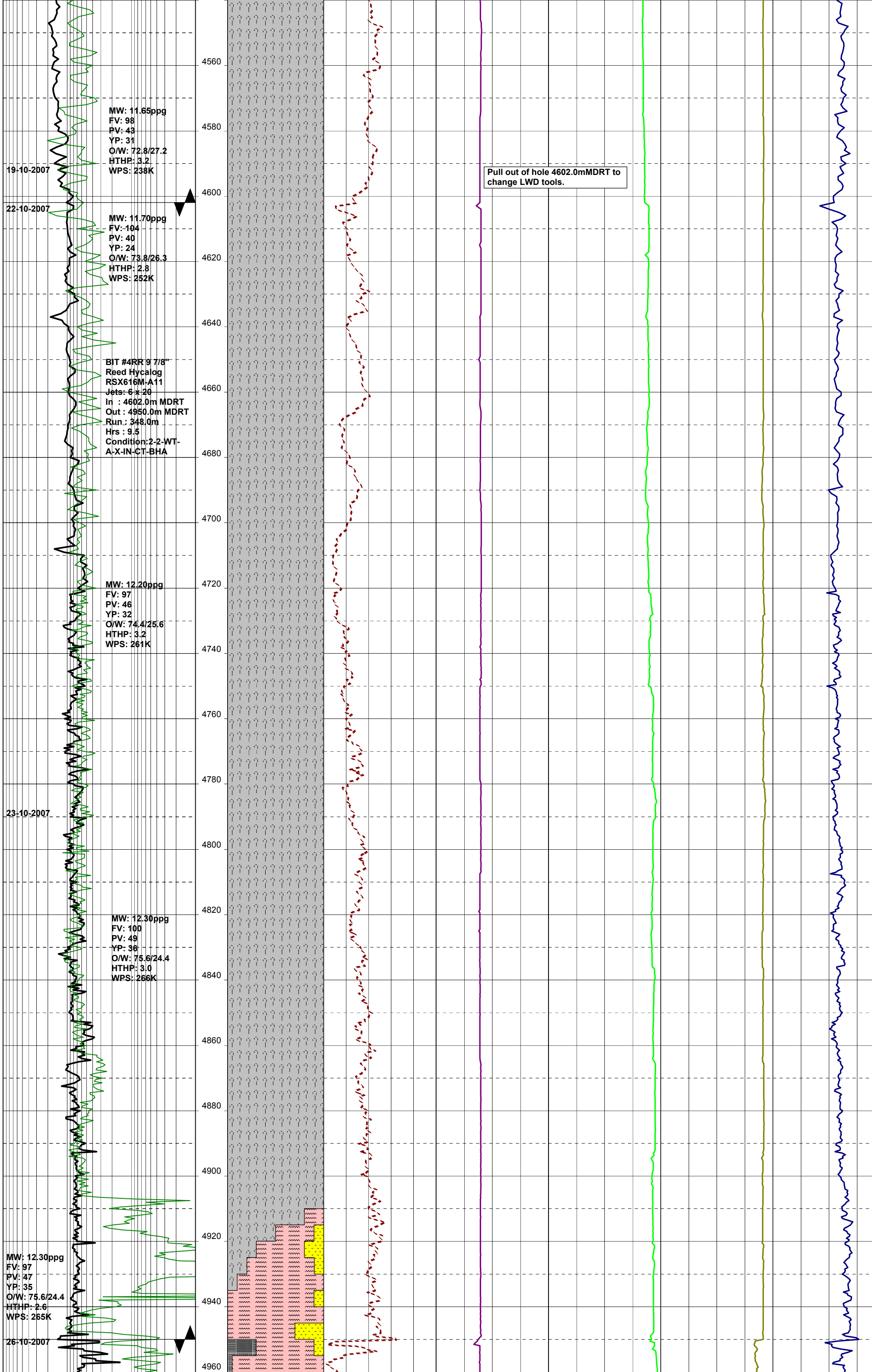
MW: 11.65ppg
FV: 107
PV: 40
YP: 27
O/W: 74.1/25.9
HTHP: 3.0
WPS: 230K

MW: 11.65ppg
FV: 98
PV: 42
YP: 31
O/W: 72.8/27.2
HTHP: 3.2
WPS: 238K

17-10-2007







BIT #5RR 9 7/8"
Reed Hycalog
RSX616M-A11
Jets: 6 x 20
In : 4950.0m MDRT
Out : 5097.0m MDRT
Run : 147.0m
Hrs : 5.6
Condition: 2-2-WT-A-
X-IN-CT/PN-TD
MW: 12.30ppg
FV: 95
PV: 47
YP: 32
O/W: 76.8/23.2
HTHP: 2.2
WPS: 273K

MW: 12.35ppg
FV: 94
PV: 47
YP: 33
O/W: 76.9/23.1
HTHP: 2.8
WPS: 276K

7" Production Casing
Shoe set at 5075.6 mMDRT

FTA-A30A REACHED TD OF
5097.00 mMDRT 2473.79 mTVDRT
(-2431.29 mTVDSS) AT 19:30 HRS
ON THE 26th OCTOBER 2007