

Company: Esso Australia Pty Ltd

Well: CBA A16

Field: Cobia

Rig: ISS Rig 22

Country: Australia

3.65" Powercutter
Tubing Cut Record

Rig: ISS Rig 22
Field: Cobia
Location: Gippsland
Well: CBA A16
Company: Esso Australia Pty Ltd

LOCATION			
Gippsland Basin Bass Strait	Permanent Datum:	Mean Sea Level	Elev.: K.B. 32.40 m
	Log Measured From:	Rig Floor	G.L. -79.00 m
	Drilling Measured From:	Drill Floor	D.F. 32.40 m

State: Victoria	Max. Well Deviation 40 deg	Longitude 148°18'32.472"E	Latitude 38°26'57.528"S
-----------------	-------------------------------	------------------------------	----------------------------

Logging Date	17-Apr-2008		
Run Number	1		
Depth Driller	2873 m		
Schlumberger Depth	2760 m		
Bottom Log Interval	2754 m		
Top Log Interval	2745 m		
Casing Fluid Type	Inhibited Sea Water		
Salinity			
Density	8.5 lbm/gal		
Fluid Level			
BIT/CASING/TUBING STRING			
Bit Size	9.875 in		
From	605 m		
To	2873 m		
Casing/Tubing Size	4.500 in		
Weight	12.75 lbm/ft		
Grade	L-80		
From	11.83 m		
To	2756 m		
Maximum Recorded Temperatures			
Logger On Bottom	18-Apr-2008	1:45	
Unit Number	3827	AUSL	
Recorded By	Mr B. Donahoe, Mr A. Sword		
Witnessed By	Mr A. Smyth, Mr S. Murphy		

PVT DATA	Oil Density	Run 1	Run 2	Run 3
	Water Salinity			
	Gas Gravity			
	Bo			
	Bw			
CEMENTING DATA	1/Bg			
	Bubble Point Pressure			
	Bubble Point Temperature			
	Solution GOR			
	Maximum Deviation	40 deg		
Primary/Squeeze	Primary			
Casing String No				
Lead Cement Type				
Volume				
Density				
Water Loss				
Additives				
Tail Cement Type				
Volume				
Density				
Water Loss				
Additives				
Expected Cement Top				
Logging Date				
Run Number				
Depth Driller				
Schlumberger Depth				
Bottom Log Interval				
Top Log Interval				
Casing Fluid Type				
Salinity				
Density				
Fluid Level				
BIT/CASING/TUBING STRING				
Bit Size				
From				
To				
Casing/Tubing Size				
Weight				
Grade				
From				
To				
Maximum Recorded Temperatures				
Logger On Bottom				
Unit Number				
Recorded By				
Witnessed By				

DEPTH SUMMARY LISTING	
-----------------------	--

Date Created: 16-APR-2008 17:13:20

Depth System Equipment	
------------------------	--

Depth Measuring Device		Tension Device		Logging Cable	
Type:	IDW-E	Type:	CMTD-B/A	Type:	2-32ZT
Serial Number:	794	Serial Number:	1711	Serial Number:	24187
Calibration Date:	08-Nov-2007	Calibration Date:	11-Mar-2008	Length:	6345 M
Calibrator Serial Number:	1009	Calibrator Serial Number:	1173		
Calibration Cable Type:	2-32ZT	Calibration Gain:	1.00	Conveyance Method:	Wireline
Wheel Correction 1:	-6	Calibration Offset:	0.00	Rig Type:	Offshore_Fixed
Wheel Correction 2:	-2				

Depth Control Parameters	
Depth (m)	0.0
Depth (m)	0.5
Depth (m)	1.0
Depth (m)	1.5
Depth (m)	2.0
Depth (m)	2.5
Depth (m)	3.0
Depth (m)	3.5
Depth (m)	4.0
Depth (m)	4.5
Depth (m)	5.0
Depth (m)	5.5
Depth (m)	6.0
Depth (m)	6.5
Depth (m)	7.0
Depth (m)	7.5
Depth (m)	8.0
Depth (m)	8.5
Depth (m)	9.0
Depth (m)	9.5
Depth (m)	10.0
Depth (m)	10.5
Depth (m)	11.0
Depth (m)	11.5
Depth (m)	12.0
Depth (m)	12.5
Depth (m)	13.0
Depth (m)	13.5
Depth (m)	14.0
Depth (m)	14.5
Depth (m)	15.0
Depth (m)	15.5
Depth (m)	16.0
Depth (m)	16.5
Depth (m)	17.0
Depth (m)	17.5
Depth (m)	18.0
Depth (m)	18.5
Depth (m)	19.0
Depth (m)	19.5
Depth (m)	20.0
Depth (m)	20.5
Depth (m)	21.0
Depth (m)	21.5
Depth (m)	22.0
Depth (m)	22.5
Depth (m)	23.0
Depth (m)	23.5
Depth (m)	24.0
Depth (m)	24.5
Depth (m)	25.0
Depth (m)	25.5
Depth (m)	26.0
Depth (m)	26.5
Depth (m)	27.0
Depth (m)	27.5
Depth (m)	28.0
Depth (m)	28.5
Depth (m)	29.0
Depth (m)	29.5
Depth (m)	30.0
Depth (m)	30.5
Depth (m)	31.0
Depth (m)	31.5
Depth (m)	32.0
Depth (m)	32.5
Depth (m)	33.0
Depth (m)	33.5
Depth (m)	34.0
Depth (m)	34.5
Depth (m)	35.0
Depth (m)	35.5
Depth (m)	36.0
Depth (m)	36.5
Depth (m)	37.0
Depth (m)	37.5
Depth (m)	38.0
Depth (m)	38.5
Depth (m)	39.0
Depth (m)	39.5
Depth (m)	40.0
Depth (m)	40.5
Depth (m)	41.0
Depth (m)	41.5
Depth (m)	42.0
Depth (m)	42.5
Depth (m)	43.0
Depth (m)	43.5
Depth (m)	44.0
Depth (m)	44.5
Depth (m)	45.0
Depth (m)	45.5
Depth (m)	46.0
Depth (m)	46.5
Depth (m)	47.0
Depth (m)	47.5
Depth (m)	48.0
Depth (m)	48.5
Depth (m)	49.0
Depth (m)	49.5
Depth (m)	50.0
Depth (m)	50.5
Depth (m)	51.0
Depth (m)	51.5
Depth (m)	52.0
Depth (m)	52.5
Depth (m)	53.0
Depth (m)	53.5
Depth (m)	54.0
Depth (m)	54.5
Depth (m)	55.0
Depth (m)	55.5
Depth (m)	56.0
Depth (m)	56.5
Depth (m)	57.0
Depth (m)	57.5
Depth (m)	58.0
Depth (m)	58.5
Depth (m)	59.0
Depth (m)	59.5
Depth (m)	60.0
Depth (m)	60.5
Depth (m)	61.0
Depth (m)	61.5
Depth (m)	62.0
Depth (m)	62.5
Depth (m)	63.0
Depth (m)	63.5
Depth (m)	64.0
Depth (m)	64.5
Depth (m)	65.0
Depth (m)	65.5
Depth (m)	66.0
Depth (m)	66.5
Depth (m)	67.0
Depth (m)	67.5
Depth (m)	68.0
Depth (m)	68.5
Depth (m)	69.0
Depth (m)	69.5
Depth (m)	70.0
Depth (m)	70.5
Depth (m)	71.0
Depth (m)	71.5
Depth (m)	72.0
Depth (m)	72.5
Depth (m)	73.0
Depth (m)	73.5
Depth (m)	74.0
Depth (m)	74.5
Depth (m)	75.0
Depth (m)	75.5
Depth (m)	76.0
Depth (m)	76.5
Depth (m)	77.0
Depth (m)	77.5
Depth (m)	78.0

Log Sequence:	Subsequent Log In the Well
Reference Log Name:	Esso Solar Composite Log
Reference Log Run Number:	
Reference Log Date:	

Depth Control Remarks	
-----------------------	--

1. IDW used as primary depth reference.
2. Z Chart used as a secondary depth control.
- 3.
- 4.
- 5.
6. Log correlated to Esso Solar Composite Log

DISCLAIMER

THE USE OF AND RELIANCE UPON THIS RECORDED-DATA BY THE HEREIN NAMED COMPANY (AND ANY OF ITS AFFILIATES, PARTNERS, REPRESENTATIVES, AGENTS, CONSULTANTS AND EMPLOYEES) IS SUBJECT TO THE TERMS AND CONDITIONS AGREED UPON BETWEEN SCHLUMBERGER AND THE COMPANY, INCLUDING: (a) RESTRICTIONS ON USE OF THE RECORDED-DATA; (b) DISCLAIMERS AND WAIVERS OF WARRANTIES AND REPRESENTATIONS REGARDING COMPANY'S USE OF AND RELIANCE UPON THE RECORDED-DATA; AND (c) CUSTOMER'S FULL AND SOLE RESPONSIBILITY FOR ANY INFERENCE DRAWN OR DECISION MADE IN CONNECTION WITH THE USE OF THIS RECORDED-DATA.

OTHER SERVICES1	OTHER SERVICES2
OS1:	OS1:
OS2:	OS2:
OS3:	OS3:
OS4:	OS4:
OS5:	OS5:
REMARKS: RUN NUMBER 1	REMARKS: RUN NUMBER 2
Log correlated to Tubing Tally dated: 27/01/1985	
Objectives: RIH with a 3.65" Power Cutter. Cut 4.5" tubing joint at	
at approximately 2745m MDKB.	
Power Cutter is fired using SECURE.	
Powercutter cutting depth: 2754m MDKB	

AH-Shooting Adaptor

AH-Shooting Adaptor

2.49

AH-Shock Sub

AH-Shock Sub

2.18

AH-Shock Sub

AH-Shock Sub

1.42

AH-Secure Arming Sub

AH-Secure Arming Sub

0.66

SHM_GUN

GUN

0.30

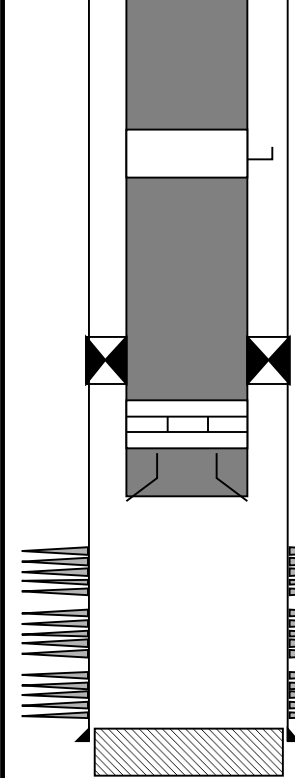
TOOL BOTTOM

MAXIMUM STRING DIAMETER 3.80 IN

MEASUREMENTS RELATIVE TO TOOL ZERO

ALL LENGTHS IN METERS

Production String	(in)		(m)	Well Schematic	(m)	(in)		Casing String
	OD	ID	MD		MD	OD	ID	
Tubing	4.500	3.960	11.8		12.1	10.750	10.050	Casing String
Tubing Hanger	7.000	4.500	11.8		12.1	7.625	6.875	Casing String
Shutin Valve	4.500		459.0					
					605.8	10.750	10.050	Casing Shoe
Gas Lift Mandrel	4.500		876.4					
Gas Lift Mandrel	4.500		1352.7					
Nipple	4.500		1366.2					
Gas Lift Mandrel	4.500		1407.0					

Gas Lift Mandrel	4.500		1517.6						
Packer	6.875	4.500	2750.6						
Nipple	4.500		2755.6						
Bell Nipple Guide	4.500		2756.1						
					2793.5			Perforation Zone	
					2797.0			Perforation Zone Bottom	
					2810.5			Perforation Zone	
					2812.0			Perforation Zone Bottom	
					2813.0			Perforation Zone	
					2816.5			Perforation Zone Bottom	
					2873.0	7.625	6.875	Casing Shoe	
					2845.0			PBTD	



3.65" Powercutter
Tubing Cut Record

MAXIS Field Log

PERFO2 Operational Summary Listing

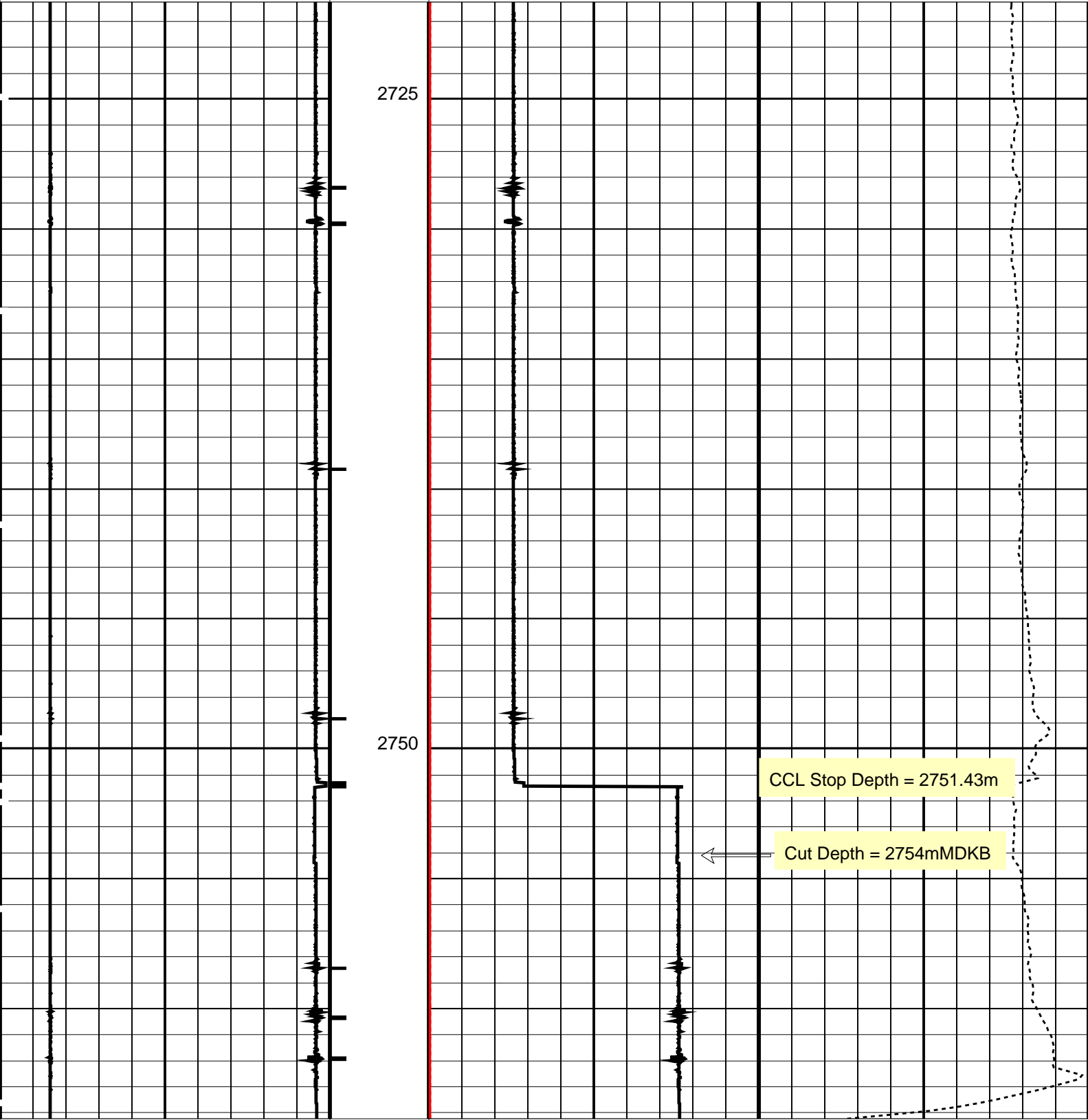
Device	Status	Req Depth (M)	Obs Depth (M)	Time Used
GUN1	Used	2754.0	2754.0	Fri Apr 18 02:04:54 2008

PIP SUMMARY

Time Mark Every 60 S

Casing Collars

Raw Casing Collar Locator (RCCL)		Shifted Casing Collar Locator (SCCL)	Tension (TENS)
-3	(----	-1010	01000
Casing Collar Locator (CCL)		DCMAIN Current (DCC)	
-19	(----	02000	
		DCMAIN Voltage (DCV)	
		0200	



Casing Collar Locator (CCL)		DCMAIN Voltage (DCV)	
-19 (----) 1		0 (V) 200	
Raw Casing Collar Locator (RCCL)		DCMAIN Current (DCC)	
-3 (----) 17		0 (MA) 2000	
	Shifted Casing Collar Locator (SCCL)	Tension (TENS)	
	-10 (----) 10 0	(LBF) 1000	

PIP SUMMARY

Time Mark Every 60 S

Casing Collars

Parameters		
DLIS Name	Description	Value
CCLD	CCL-L: Casing Collar Locator	12 IN
CCLT	CCL reset delay	0.3 V
	CCL Detection Level	
Format: PERFO	Vertical Scale: 1:200	Graphics File Created: 18-Apr-2008 02:01

OP System Version: 16C0-147			
MCM			
SHM_GUN	16C0-147	CCL-L	16C0-147

Output DLIS Files			
DEFAULT	PERFO_016LUP	FN:15	PRODUCER 18-Apr-2008 02:01

Schlumberger

3.65" Powercutter Correlation

MAXIS Field Log

Company: Esso Australia Pty Ltd						Well: CBA A16
Output DLIS Files						
DEFAULT	PERFO_015LUP	FN:14	PRODUCER	18-Apr-2008 01:48	2764.4 M	2713.6 M

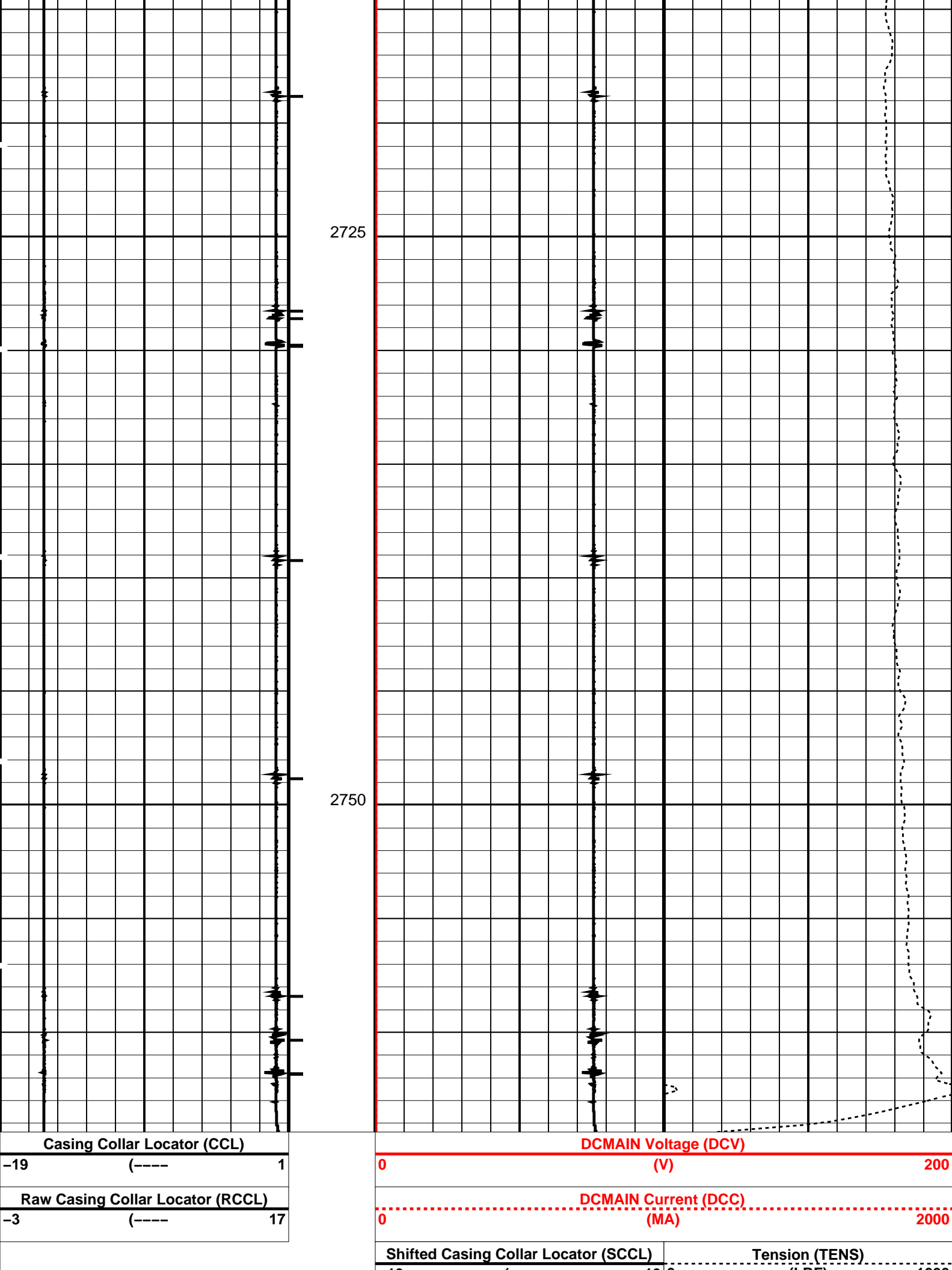
OP System Version: 16C0-147			
MCM			
SHM_GUN	16C0-147	CCL-L	16C0-147

PIP SUMMARY

Time Mark Every 60 S

Casing Collars

	Shifted Casing Collar Locator (SCCL)	Tension (TENS)	
	-10 (----) 10 0	(LBF) 1000	
Raw Casing Collar Locator (RCCL)	DCMAIN Current (DCC)		
-3 (----) 17	0 (MA) 2000		
Casing Collar Locator (CCL)	DCMAIN Voltage (DCV)		
-19 (----) 1	0 (V) 200		



-10

(-----

100

(LBF)

1000

PIP SUMMARY

Time Mark Every 60 S

Casing Collars

Parameters

DLIS Name	Description	Value
CCLD	CCL-L: Casing Collar Locator	12 IN
CCLT	CCL reset delay	0.3 V
	CCL Detection Level	

Format: PERFO Vertical Scale: 1:200 Graphics File Created: 18-Apr-2008 01:48

OP System Version: 16C0-147

MCM

SHM_GUN 16C0-147 CCL-L 16C0-147

Output DLIS Files

DEFAULT PERFO_015LUP FN:14 PRODUCER 18-Apr-2008 01:48

Company: **Esso Australia Pty Ltd**

Schlumberger

Well: **CBA A16**

Field: **Cobia**

Rig: **ISS Rig 22**

Country: **Australia**

3.65" Powercutter
Tubing Cut Record