



Company: Esso Australia Pty Ltd.

Well: A-26
Field: Bream A
Rig : Prod4 / Crane Country: Australia

2-1/8" Phased Powerjet Perforation
4-1/2" MPBT Plug
Setting Record

Prod4 / Crane

Field: Bream A

Location: Gippsland

Well: A-26

Company: Esso Australia Pty Ltd.

LOCATION	
Gippsland Basin Bass Strait	Elev.: K.B. 32.82 m G.L. -59 m D.F. 32.82 m
Permanent Datum:	M.S.L.
Log Measured From:	D.F.
Drilling Measured From:	D.F.
State : Victoria	Max. Well Deviation 72 deg
	Longitude 147 46'15"E
	Latitude 038 30'04"S

Logging Date	1-May-2008
Run Number	2 thru 6
Depth Driller	4313 m
Schlumberger Depth	4316 m
Bottom Log Interval	4301 m
Top Log Interval	4296 m
Casing Fluid Type	Production Fluids
Salinity	
Density	
Fluid Level	1306 m
BIT/CASING/TUBING STRING	
Bit Size	8.500 in
From	4148 m
To	4425 m
Casing/Tubing Size	4.500 in
Weight	37.6 lbm/ft
Grade	L-80
From	3501.45 m
To	4425 m
Maximum Recorded Temperatures	210 degF
Logger On Bottom	1-May-2008
Unit Number	889
Recorded By	G Wright & O Darby.
Witnessed By	B White & J Dean

	Run 1
Oil Density	
Water Salinity	
Gas Gravity	
Bo	
Bw	
1/Bg	
Bubble Point Pressure	
Bubble Point Temperature	
Solution GOR	
Maximum Deviation	72 deg
CEMENTING DATA	
Primary/Squeeze	Primary
Casing String No	
Lead Cement Type	
Volume	
Density	
Water Loss	
Additives	
Tail Cement Type	
Volume	
Density	
Water Loss	
Additives	
Expected Cement Top	
Logging Date	
Run Number	
Depth Driller	
Schlumberger Depth	
Bottom Log Interval	
Top Log Interval	
Casing Fluid Type	
Salinity	
Density	
Fluid Level	
BIT/CASING/TUBING STRING	
Bit Size	
From	
To	
Casing/Tubing Size	
Weight	
Grade	
From	
To	
Maximum Recorded Temperatures	
Logger On Bottom	
Unit Number	
Recorded By	
Witnessed By	

DEPTH SUMMARY LISTING

Date Created: 30-APR-2008 11:17:19

Depth System Equipment

Depth Measuring Device	Tension Device	Logging Cable
Type: IDW-EB Serial Number: 6373 Calibration Date: 04-Jan-2007 Calibrator Serial Number: 9 Calibration Cable Type: 2-23ZT Wheel Correction 1: -2 Wheel Correction 2: -4	Type: PSDS/OSDS Serial Number: 325357 Calibration Date: 30-Apr-2008 Calibrator Serial Number: 1174 Calibration Gain: 0.95 Calibration Offset: -494.00	Type: 2-32ZT Serial Number: 27244 Length: 6409.94 M Conveyance Method: Wireline Rig Type: Rigless

Depth Control Parameters

Log Sequence:	Subsequent Log In the Well
Reference Log Name:	ExxonMobil correlation log.
Reference Log Run Number:	
Reference Log Date:	.

Depth Control Remarks

1. IDW-EB 6373 used as primary depth control.
2. Z-Chart as secondary control.

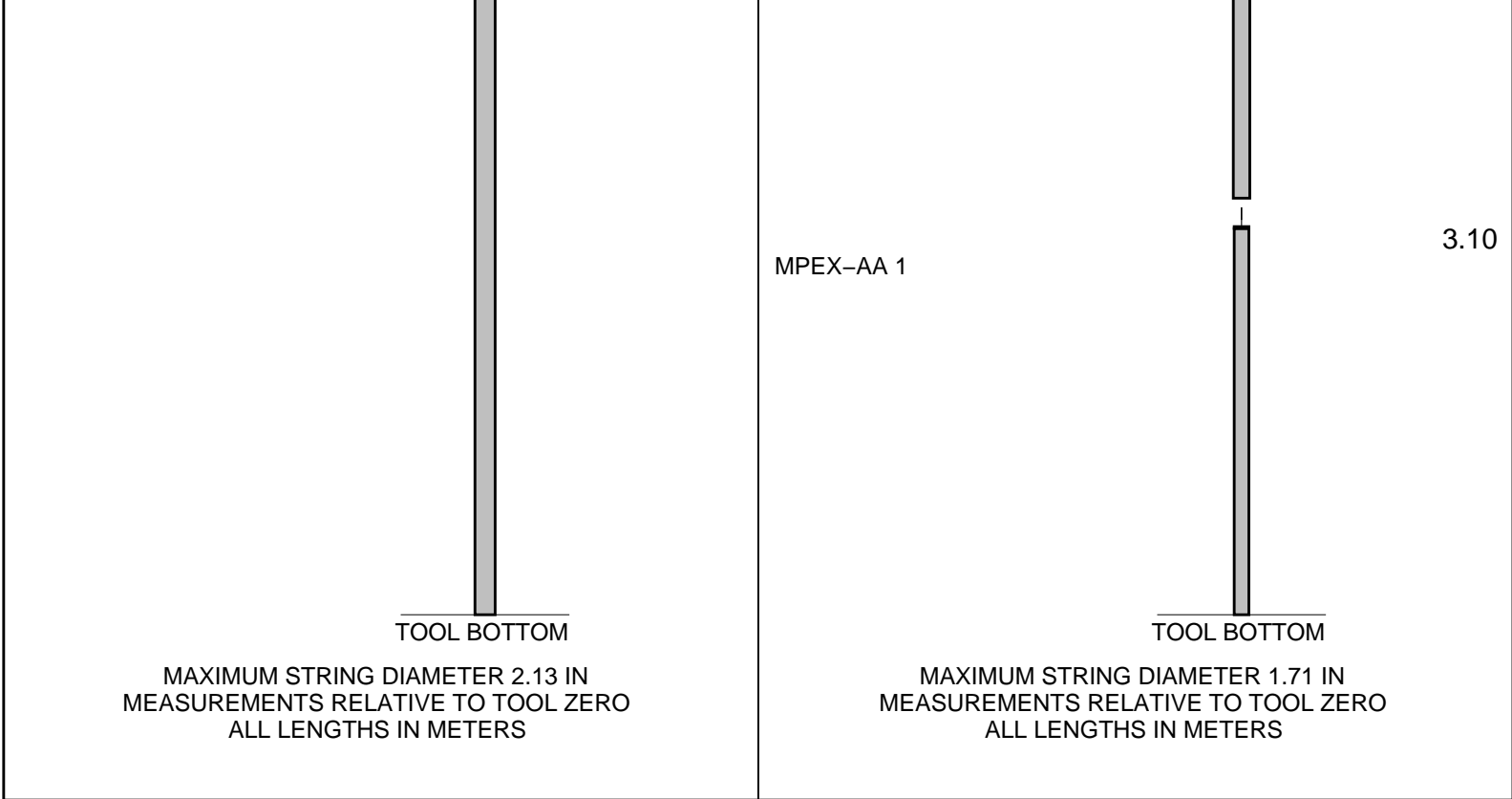
DISCLAIMER

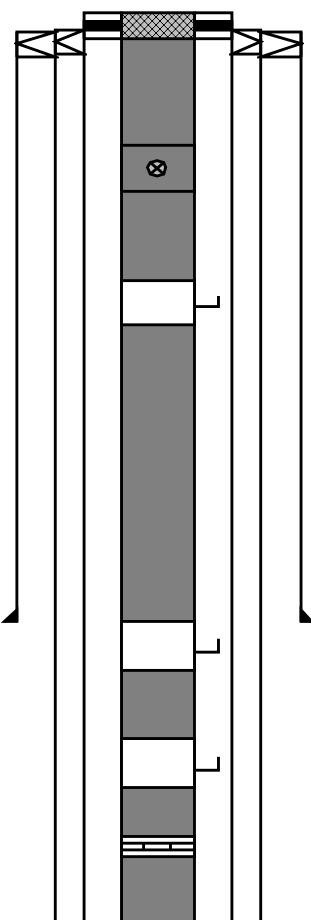
THE USE OF AND RELIANCE UPON THIS RECORDED-DATA BY THE HEREIN NAMED COMPANY (AND ANY OF ITS AFFILIATES, PARTNERS, REPRESENTATIVES, AGENTS, CONSULTANTS AND EMPLOYEES) IS SUBJECT TO THE TERMS AND CONDITIONS AGREED UPON BETWEEN SCHLUMBERGER AND THE COMPANY, INCLUDING: (a) RESTRICTIONS ON USE OF THE RECORDED-DATA; (b) DISCLAIMERS AND WAIVERS OF WARRANTIES AND REPRESENTATIONS REGARDING COMPANY'S USE OF AND RELIANCE UPON THE RECORDED-DATA; AND (c) CUSTOMER'S FULL AND SOLE RESPONSIBILITY FOR ANY INFERENCE DRAWN OR DECISION MADE IN CONNECTION WITH THE USE OF THIS RECORDED-DATA.

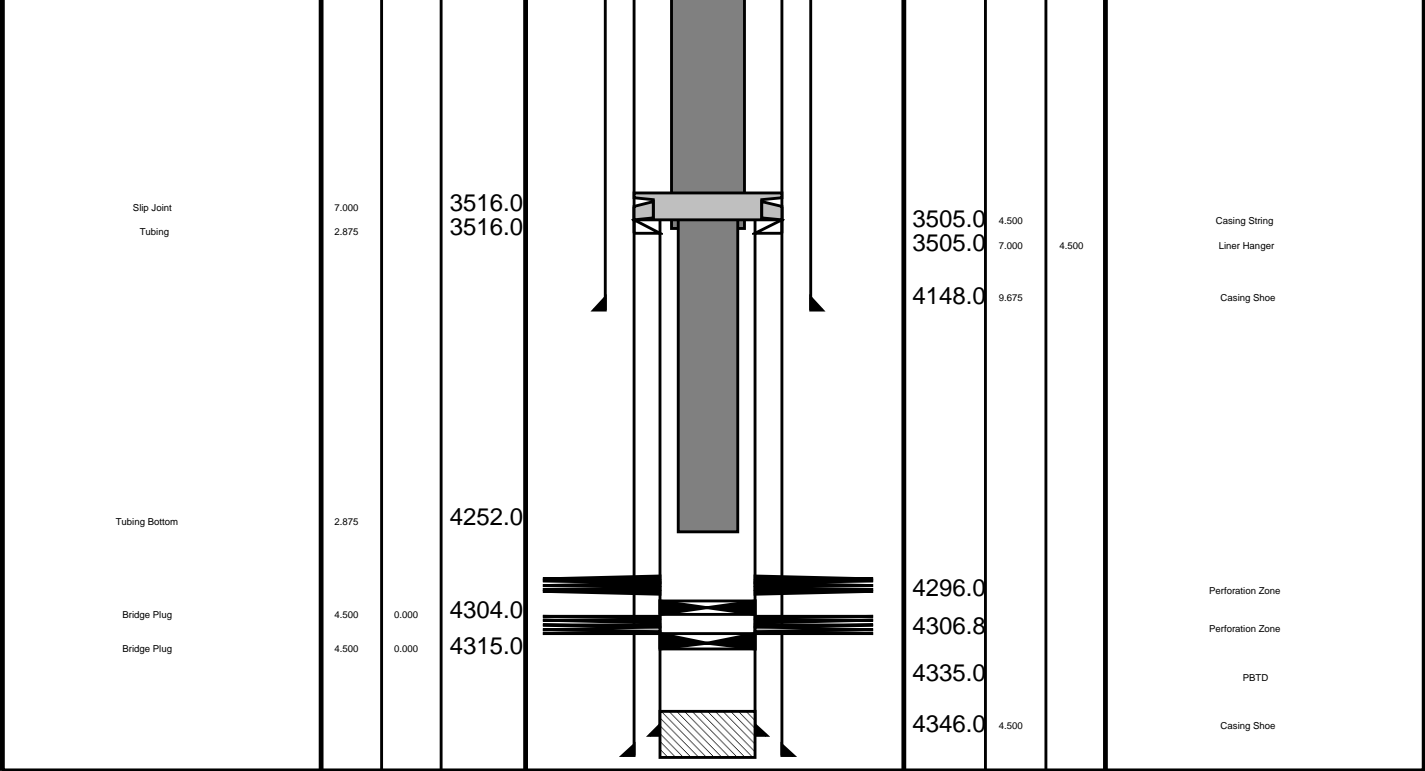
OTHER SERVICES1
OS1: RST Sigma survey

REMARKS: RUN NUMBER 1
Log correlated to ExxonMobil composite supplied with logging program.
Maximum well deviation = 72 Deg @ 4005m MDKB.
Objective:
RIH with perforating guns correlate guns on depth to Solar composite log. Locate
the guns over perforation interval = 4296.0-4301.0m attempt to obtain a 300 psi
underbalance whilst maintaining the guns at the desired depth, perforate the
well and record static bottom hole pres / temp. Flow the well for 15 mins
after perforation and record flowing pres / temp.

SBHT = 209 DegF, SBHP 2061Psia / FBHT =210 DegF, FBHP= 2599.2 Psia					
MPBT					
RIH a dummy plug toolstring incorporating GR–CCL ensure access to plug setting					
depth. RIH with MPBT toolstring with a 4 1/2" plug and set with the sealing					
element at approximately 4304m MDKB.					
RIH with dump bailer toolstring and lightly tag the MPBT plug pull back one					
meter and release water/ cement leaving approximately 1m of cement on the plug.					
Crew : J Annear,J Light,P Lawrence, A Mc Lellan.					
RUN 1			RUN 2		
SERVICE ORDER #: PROGRAM VERSION: FLUID LEVEL:			Aus07509096 15C0–309 1306 m		
LOGGED INTERVAL	START	STOP	LOGGED INTERVAL	START	STOP
EQUIPMENT DESCRIPTION					
RUN 1			RUN 2		
SURFACE EQUIPMENT			SURFACE EQUIPMENT		
MWPM–AA			MPBM–AA 47		
DOWNHOLE EQUIPMENT			DOWNHOLE EQUIPMENT		
AH–SWBS–B 787			AH–SWBS–B 786		
11.18			12.20		
AH–SWBS–B 786			AH–SWBS–B 787		
10.50			11.51		
AH–SWBS–B 785			AH–SWBS–B 785		
9.81			10.83		
MH–SWHS–A 759			MH–SWHS–A 759		
9.13			10.14		
MWPG–AA 24029 MWGH–AA 69			CCL–L 9851		
8.80			9.80		
MWPG GR			MPSU–BA 20		
2.41			9.34		
MWPH–AA 74 MWPS–AA 74					
7.82					
CCL SMWP Pres SMWP Temp Tension			CCL Tachomete Cable Cur Head Volt Tension		
TOOL ZERO			TOOL ZERO		
5.00					
2 1/8" Powerjet Gun 5 mtrs					



Production String	(in)		(m)	Well Schematic	(m)	(in)		Casing String
	OD	ID	MD		MD	OD	ID	
Tubing Hanger	7.000	3.500	12.0		13.0	13.375		Casing String
Tubing	3.500		13.8		13.0	9.675		Casing String
					13.0	13.375	9.675	Liner Hanger
					12.5	7.000		Casing String
					12.5	9.675	7.000	Liner Hanger
Shutin Valve	3.500		445.0					
Gas Lift Mandrel	3.500		811.0					
Gas Lift Mandrel	3.500		1794.0		1620.0	13.375		Casing Shoe
Gas Lift Mandrel	3.500		2232.0					
Nipple	3.500		2248.0					



Job Events Summary

MAXIS Field Log

Schlumberger Job Event Summary

Time	Elapsed Time	Depth (M)	File
Rig Up Started	1-May-2008 9:00		
Simulated Log	1-May-2008 9:47	000:32	RST_PSP_016LUP
RST OP Check			
Log Pass (up)	1-May-2008 12:16	000:16	4327.4 – 4210.8 RST_PSP_019LUP
RST Correlation Pass			
Log Pass (up)	1-May-2008 12:44	000:22	4324.5 – 4209.6 RST_PSP_021LUP
RST Sigma Pass 1			
Log Pass (up)	1-May-2008 13:21	000:23	4318.7 – 4210.8 RST_PSP_022LUP
RST Sigma Pass 2			
Log Pass (up)	1-May-2008 13:47	000:28	4318.4 – 4203.8 RST_PSP_024LUP
RST Sigma Pass 3			
Simulated Log	1-May-2008 18:48	000:01	PERFO_032LUP
Hot check for gun run			
Log Pass (up)	1-May-2008 21:05	000:09	4307.7 – 4218.9 PERFO_040LUP
Correlation pass gun run			
Log Pass (up)	1-May-2008 21:18	000:37	4314.6 – 4218.0 PERFO_041LUP
Shooting pass gun run			

Shooting pass gun run	1-May-2008 21:24 000:23	4292.5 - 3.4	PERFO_044LTP
Station Log			
MWPT Station Log			
Log Pass (up)	2-May-2008 1:15 000:11	4312.3 - 4203.3	PSP_056LUP
MPBT Dummy run			
Simulated Log	2-May-2008 6:06 000:15		MPBT_070LUP
MPBT Setting pass			
Simulated Log	2-May-2008 8:04 000:10		PERFO_075LUP
Dump Bailer OP check			
Log Pass (up)	2-May-2008 12:23 000:04	4302.1 - 4242.5	PERFO_083LUP
Dump Bailer water dump			
Log Pass (up)	2-May-2008 21:37 000:10	4302.1 - 4242.2	PERFO_111LUP
Dump Bailer Cement Dump			
Rig Down Completed	3-May-2008 23:30		

Schlumberger

2 1/8" Dump Bailer
Cement Run

MAXIS Field Log

Input DLIS Files

DEFAULT PERFO_111LUP FN:110 PRODUCER 02-May-2008 21:37 4302.1 M 4242.2 M

Output DLIS Files

DEFAULT PERFO_112PUP FN:111 PRODUCER 02-May-2008 22:14 4300.3 M 4240.8 M

OP System Version: 15C0-309

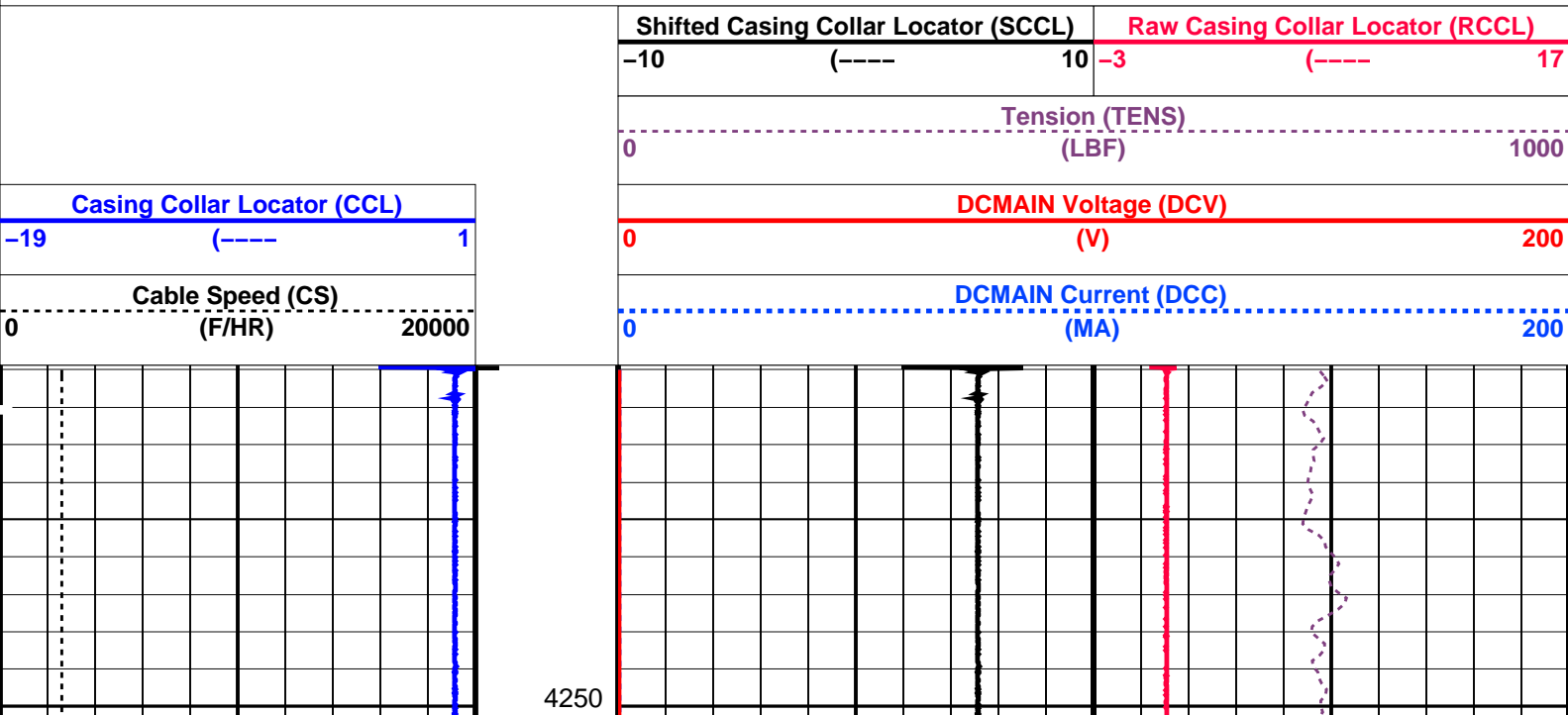
MCM

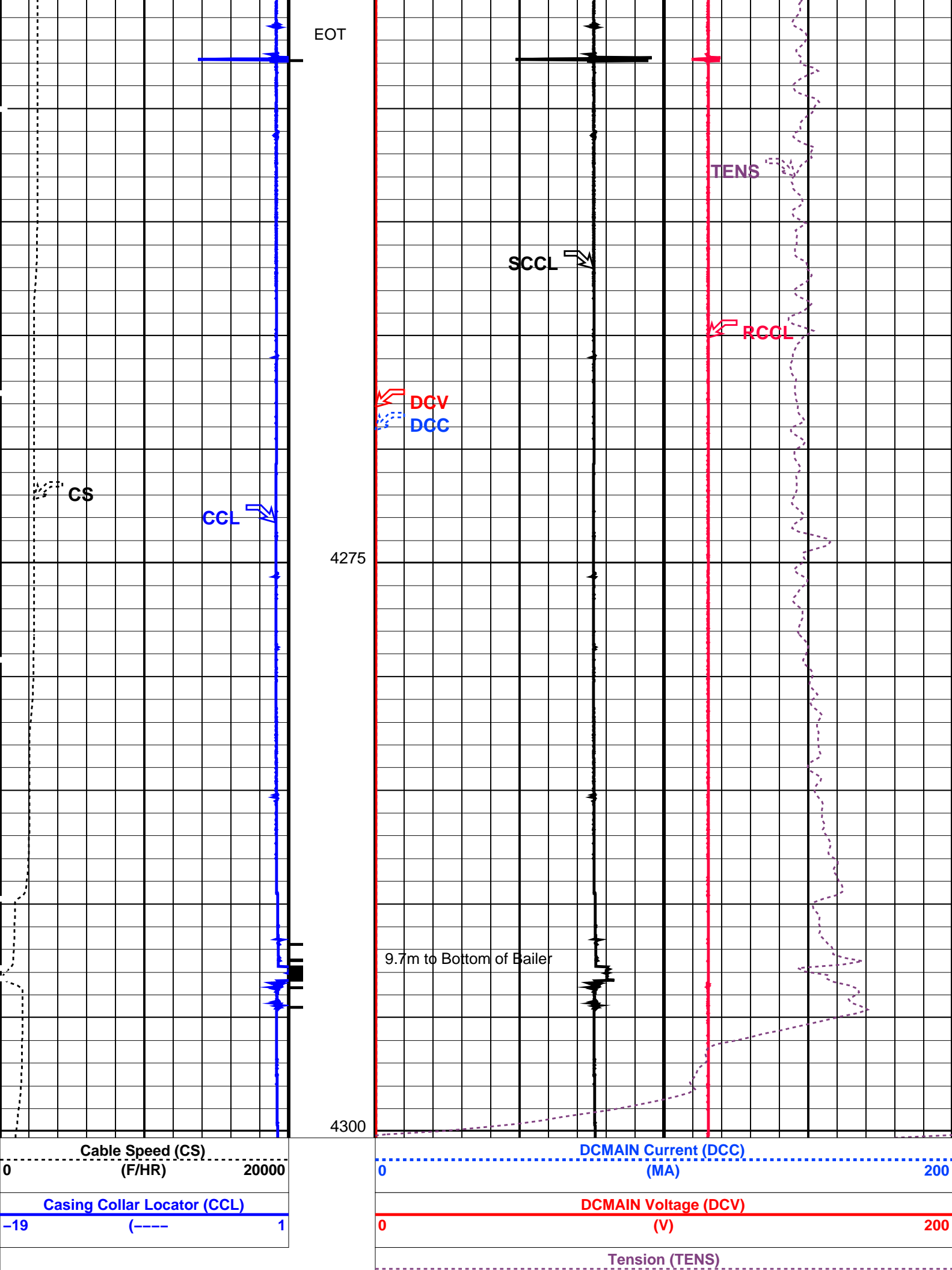
SHM_GUN SRPC-3546-Q1_2008_OP15 CCL-L SRPC-3546-Q1_2008_OP15

PIP SUMMARY

└─ Casing Collars

Time Mark Every 60 S





	0 (LBF)		1000	
	Shifted Casing Collar Locator (SCCL)		Raw Casing Collar Locator (RCCL)	
	-10	(----10	-3	(----17

PIP SUMMARY

Time Mark Every 60 S

Casing Collars

Parameters			
DLIS Name	Description	Value	
CCLD CCLT	CCL-L: Casing Collar Locator		
	CCL reset delay	12	IN
	CCL Detection Level	0.3	V
System and Miscellaneous			
DO	Depth Offset for Playback	-1.9	M
PP	Playback Processing	NORMAL	

Format: PERFO

Vertical Scale: 1:200

Graphics File Created: 02-May-2008 22:14

OP System Version: 15C0-309

MCM

SHM_GUN

SRPC-3546-Q1_2008_OP15

CCL-L

SRPC-3546-Q1_2008_OP15

Input DLIS Files

DEFAULT

PERFO_111LUP

FN:110

PRODUCER

02-May-2008 21:37

4302.1 M

4242.2 M

Output DLIS Files

DEFAULT

PERFO_112PUP

FN:111

PRODUCER

02-May-2008 22:14

Schlumberger

2 1/8" Dump Bailer
Water Run

MAXIS Field Log

Output DLIS Files

DEFAULT

PERFO_083LUP

FN:82

PRODUCER

02-May-2008 12:23

4302.1 M

4242.5 M

OP System Version: 15C0-309

MCM

SHM_GUN

SRPC-3546-Q1_2008_OP15

CCL-L

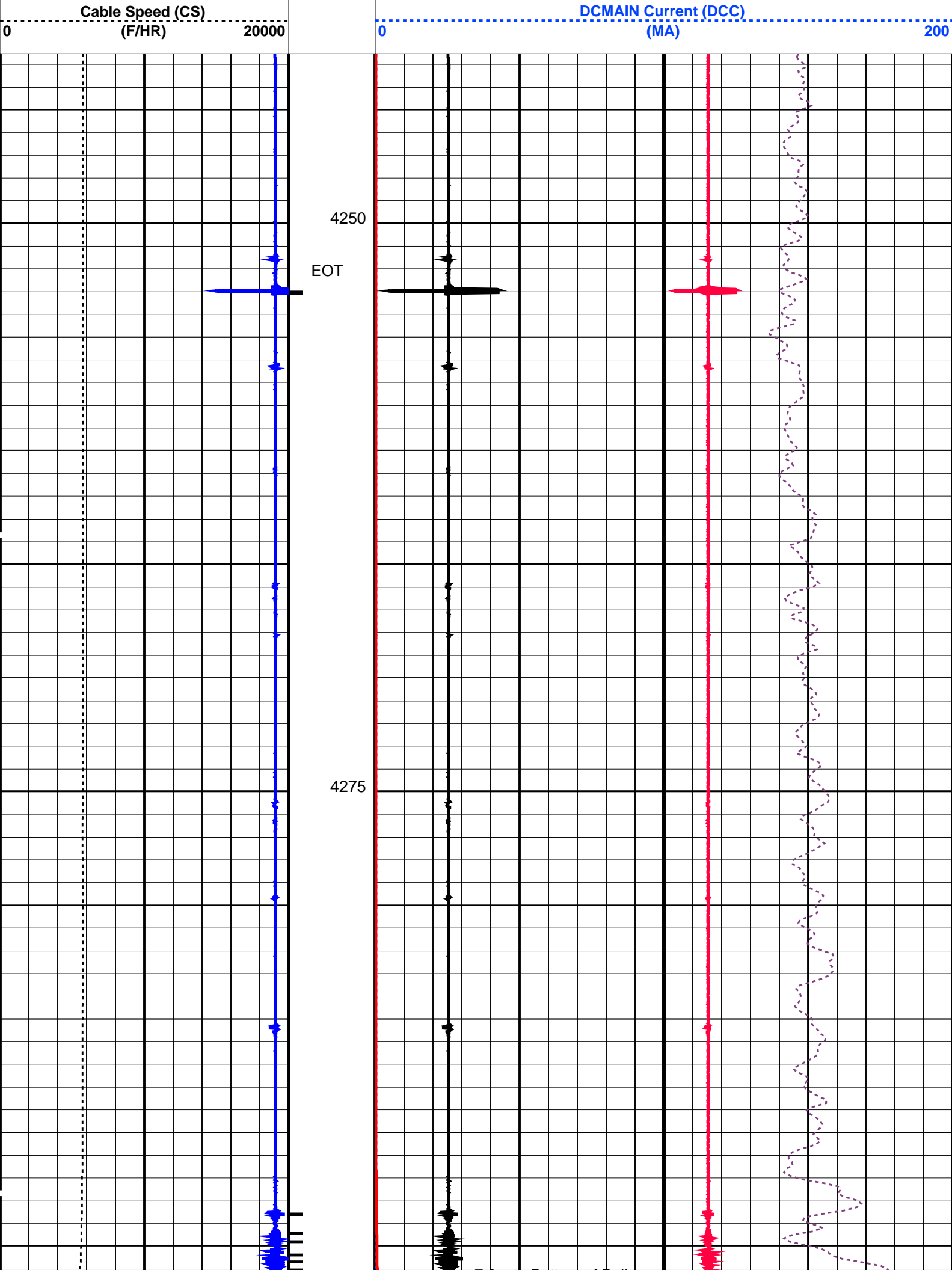
SRPC-3546-Q1_2008_OP15

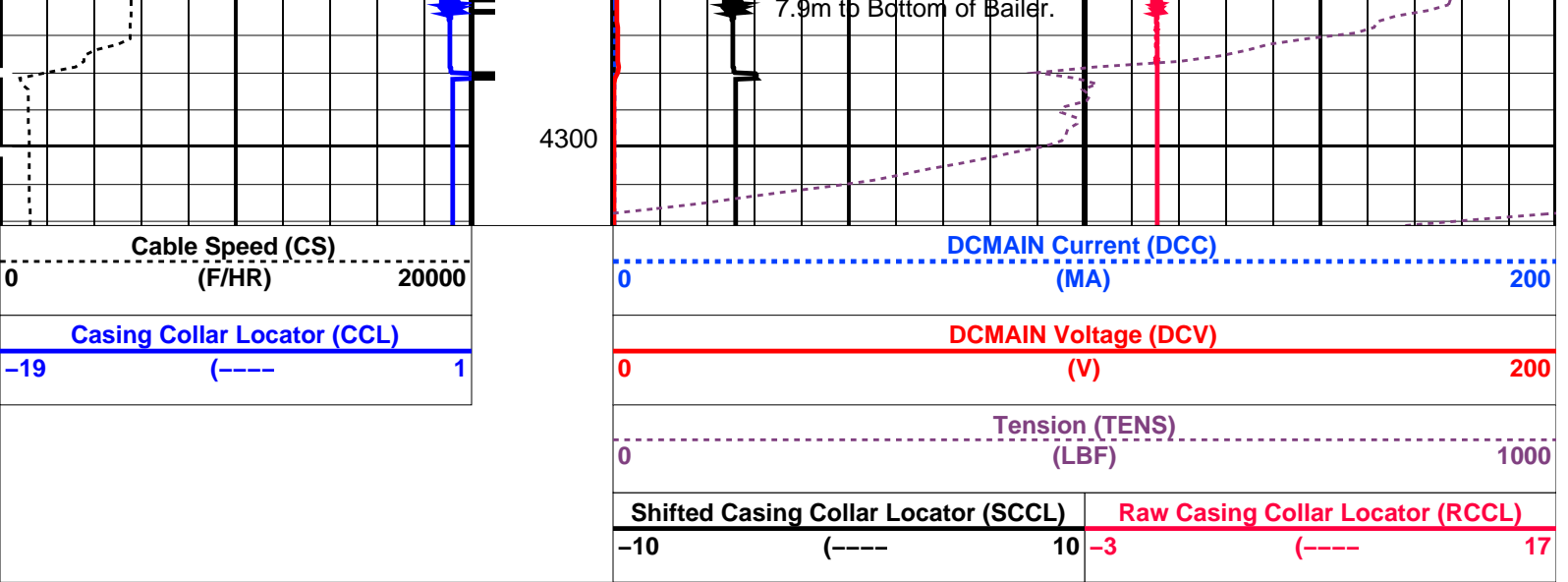
PIP SUMMARY

Time Mark Every 60 S

Casing Collars

	Shifted Casing Collar Locator (SCCL)		Raw Casing Collar Locator (RCCL)				
	-10	(----	10	-3	(----	17	
	Tension (TENS)						
	0		(LBF)				1000
	DCMAIN Voltage (DCV)						
Casing Collar Locator (CCL)							
-19	(----	1	0	(V)			200





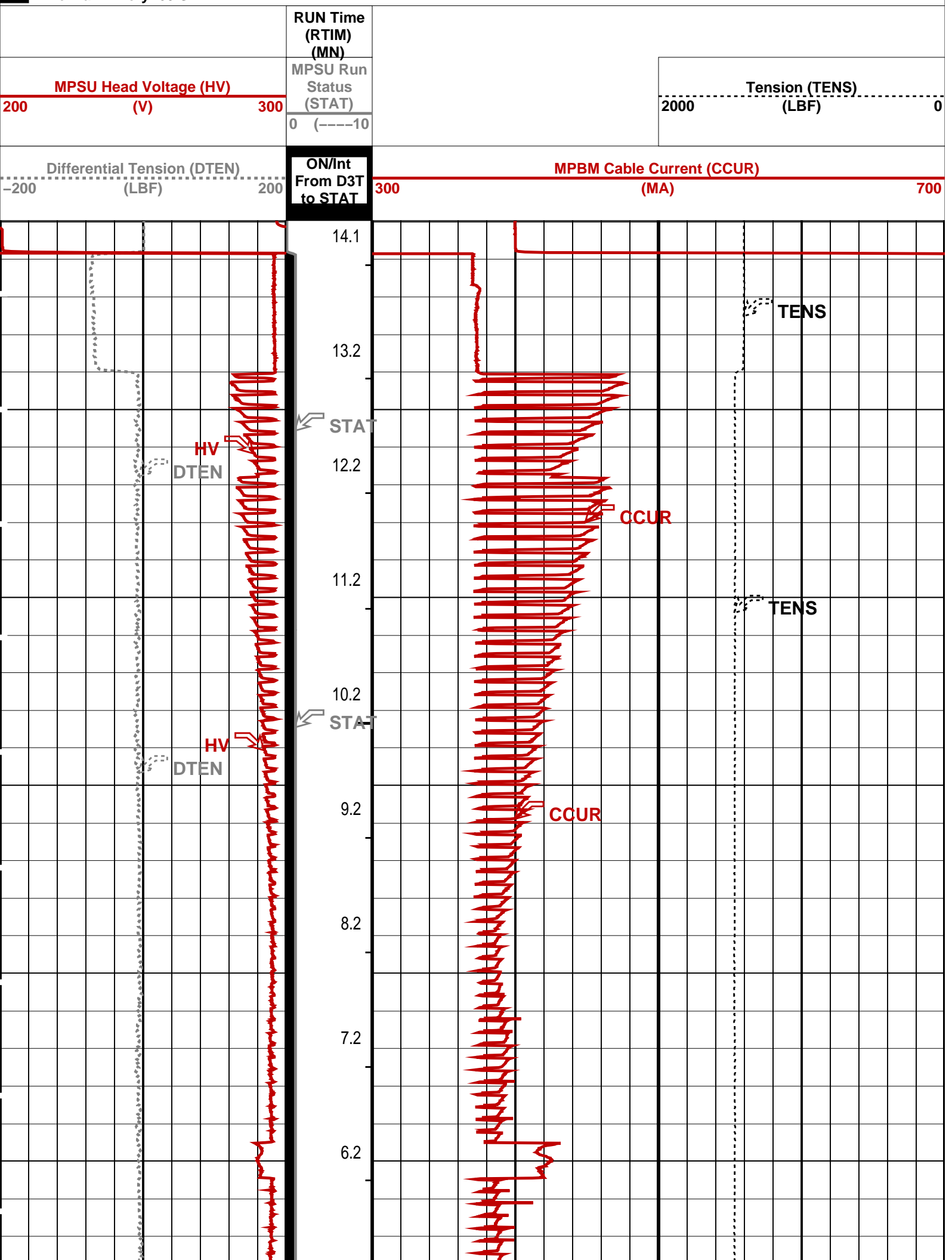
PIP SUMMARY
Time Mark Every 60 S

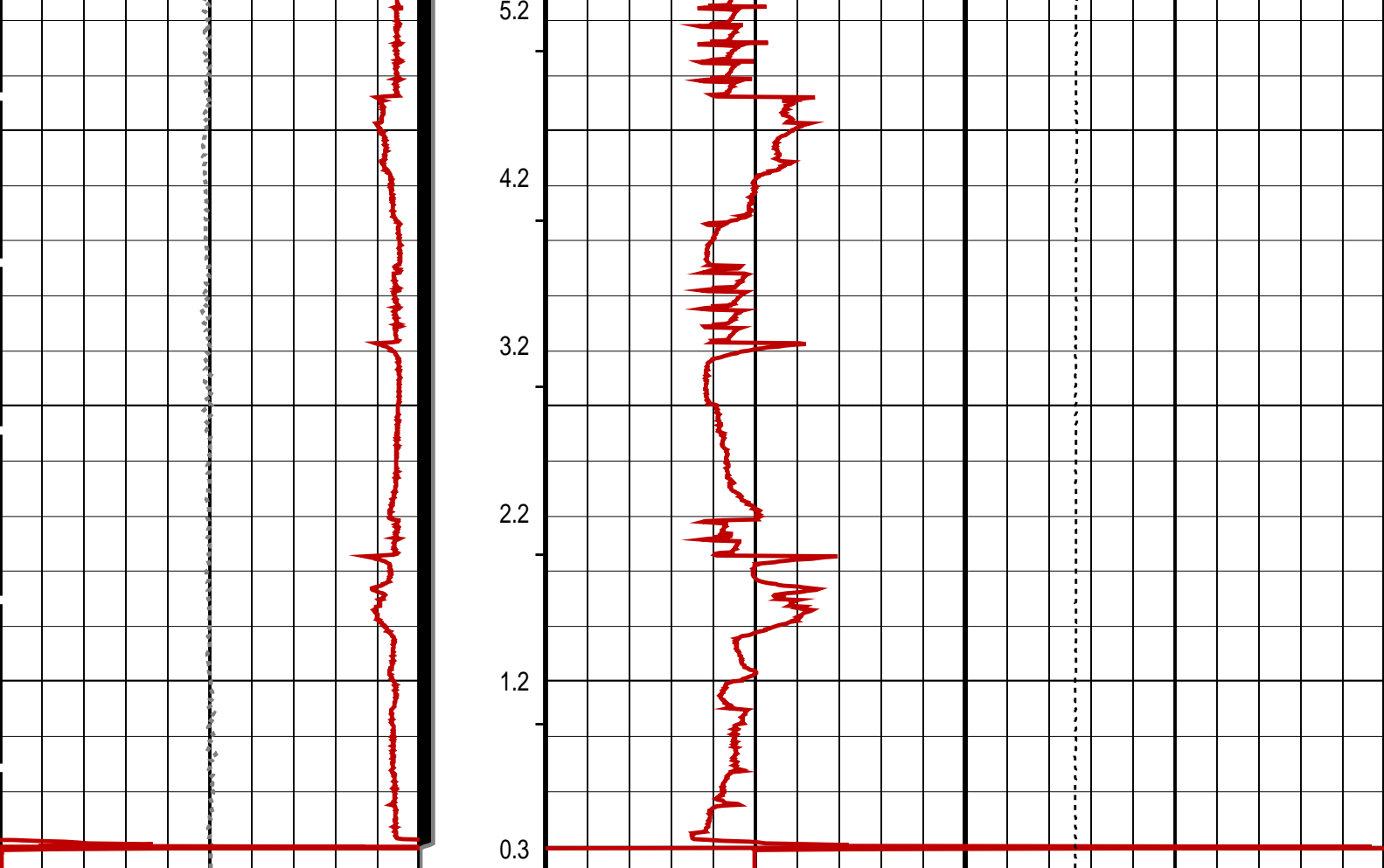
Parameters			
DLIS Name		Description	Value
CCL-L: Casing Collar		Locator	
CCLD		CCL reset delay	12 IN
CCLT		CCL Detection Level	0.3 V
Format: PERFO	Vertical Scale: 1:200		Graphics File Created: 02-May-2008 12:23
OP System Version: 15C0-309			
MCM			
SHM_GUN	SRPC-3546-Q1_2008_OP15	CCL-L	SRPC-3546-Q1_2008_OP15
Output DLIS Files			
DEFAULT	PERFO_083LUP	FN:82	PRODUCER 02-May-2008 12:23

4 1/2" MPBT Plug
Setting Record

MAXIS Field Log

Output DLIS Files			
DEFAULT	MPBT_070LUP	FN:69	PRODUCER 02-May-2008 06:06
OP System Version: 15C0-309			
MCM			
MPEX-AA	SRPC-3546-Q1_2008_OP15	MPSU-BA	SRPC-3546-Q1_2008_OP15
CCL-L	SRPC-3546-Q1_2008_OP15		
PIP SUMMARY			
Time Mark Every 60 S			





Differential Tension (DTEN) (LBF)	ON/Int From D3T to STAT	MPBM Cable Current (CCUR) (MA)
-200 200		300 700
MPSU Head Voltage (HV) (V)	MPSU Run Status (STAT)	Tension (TENS) (LBF)
200 300	0 (----10	2000 0
	RUN Time (RTIM) (MN)	

PIP SUMMARY

┆ MPSU Run Time Every 1 MN

┆ MPSU Run Time Every 10 MN

Time Mark Every 60 S

Parameters			
DLIS Name	Description		Value
MPSU-BA: MECHANICAL PLUGBACK SETTING UNIT IPUMP	Intensifier Pump		TRUE
Format: MPBT	Vertical Scale: 1:600	Graphics File Created: 02-May-2008 06:06	
OP System Version: 15C0-309			
MCM			
MPEX-AA CCL-L	SRPC-3546-Q1_2008_OP15 SRPC-3546-Q1_2008_OP15	MPSU-BA	SRPC-3546-Q1_2008_OP15
Output DLIS Files			
DEFAULT	MPBT_070LUP	FN:69 PRODUCER	02-May-2008 06:06

Output DLIS Files

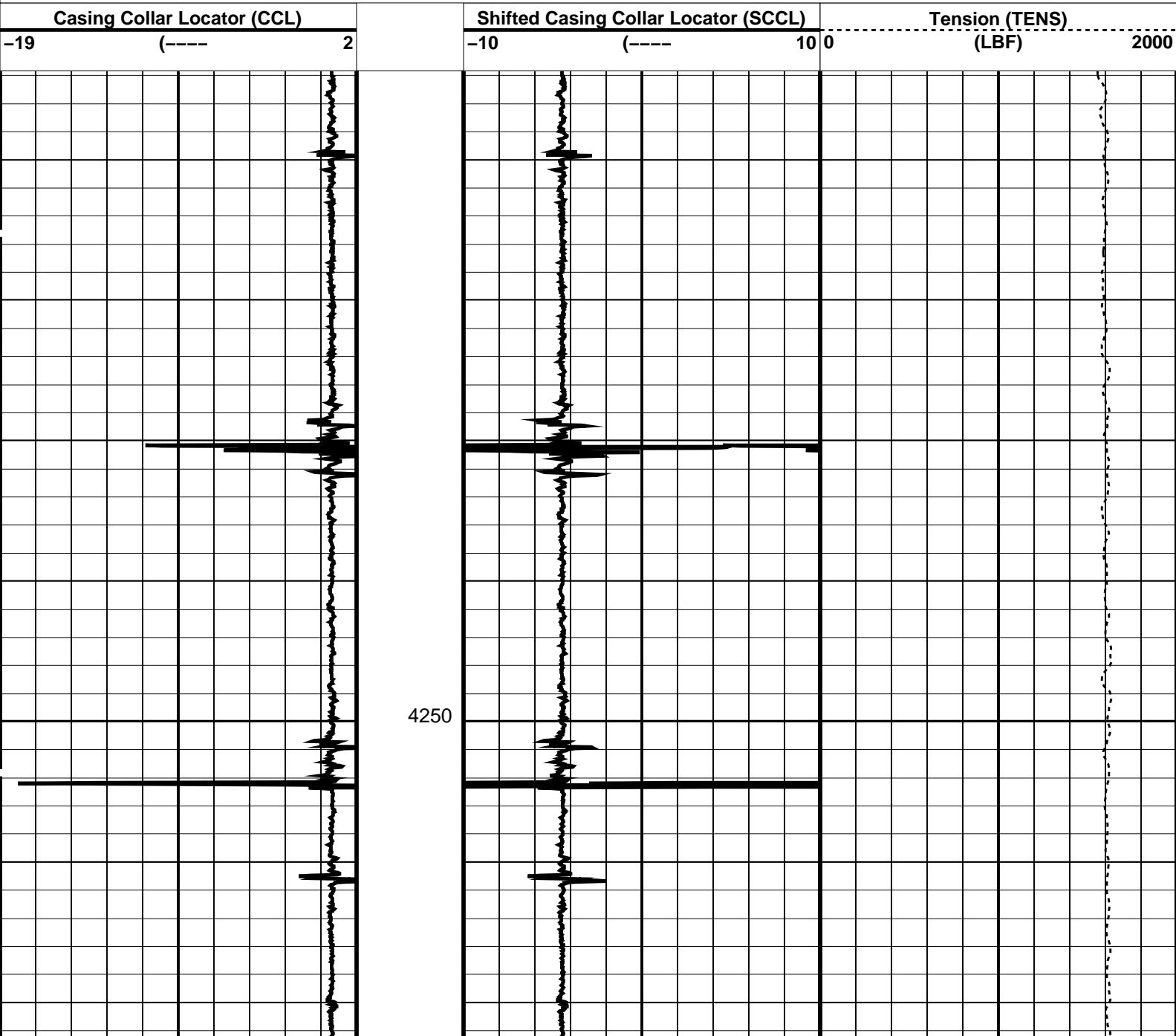
DEFAULT MPBT_073LUP FN:72 PRODUCER 02-May-2008 06:23

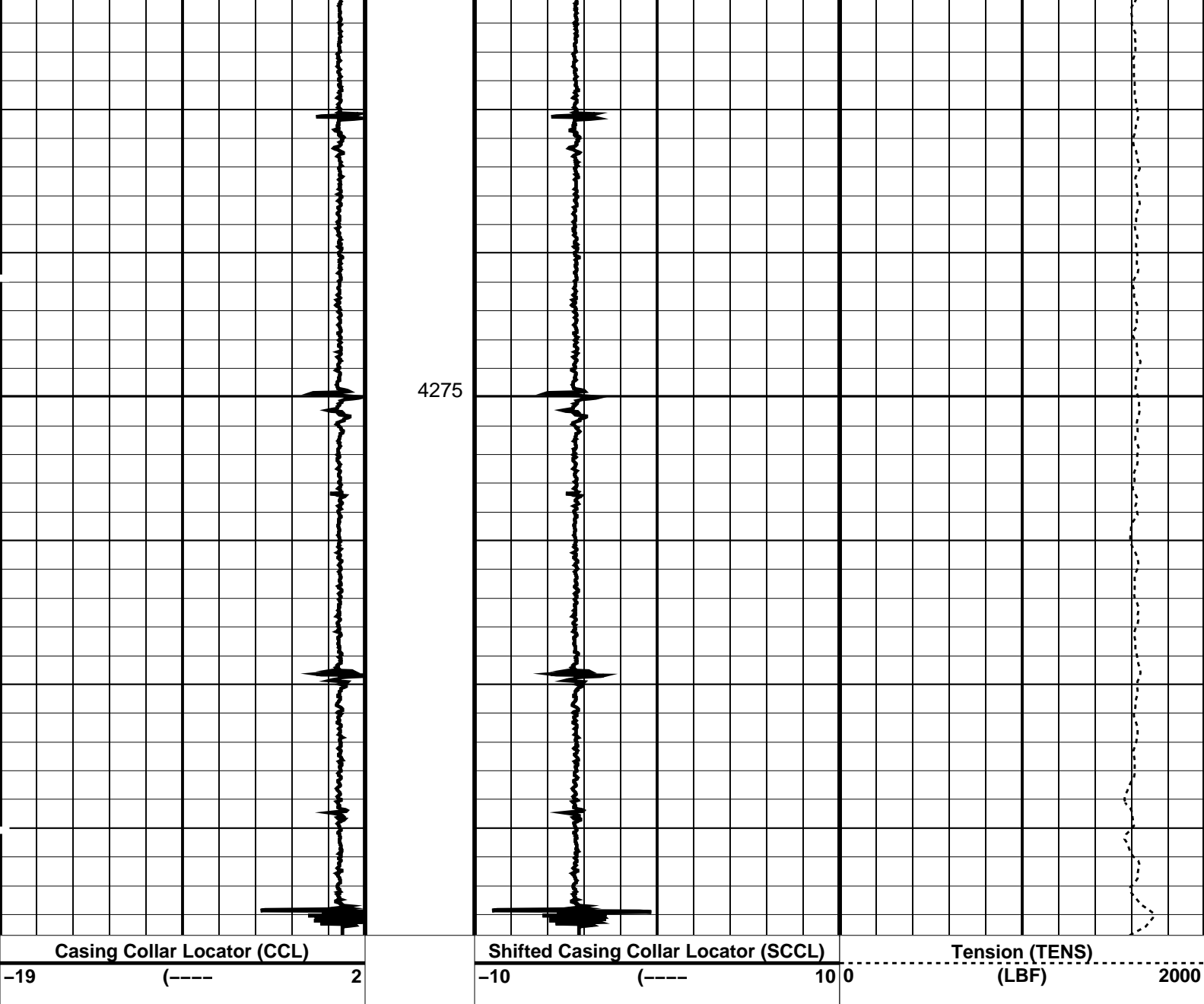
OP System Version: 15C0-309
MCM

MPEX-AA SRPC-3546-Q1_2008_OP15 MPSU-BA SRPC-3546-Q1_2008_OP15
CCL-L SRPC-3546-Q1_2008_OP15

PIP SUMMARY

Time Mark Every 60 S





PIP SUMMARY

Time Mark Every 60 S

Parameters		
DLIS Name	Description	Value
CCL-L: Casing Collar Locator		
CCLD	CCL reset delay	12 IN
CCLT	CCL Detection Level	0.3 V

Format: PERFO Vertical Scale: 1:200 Graphics File Created: 02-May-2008 06:23

OP System Version: 15C0-309			
MCM			
MPEX-AA	SRPC-3546-Q1_2008_OP15	MPSU-BA	SRPC-3546-Q1_2008_OP15
CCL-L	SRPC-3546-Q1_2008_OP15		

Output DLIS Files			
DEFAULT	MPBT_073LUP	FN:72 PRODUCER	02-May-2008 06:23

MAXIS Field Log

Company:

Well:

Input DLIS Files

DEFAULT	PSP_056LUP	FN:55	PRODUCER	02-May-2008 01:15	4312.3 M	4203.3 M
---------	------------	-------	----------	-------------------	----------	----------

Output DLIS Files

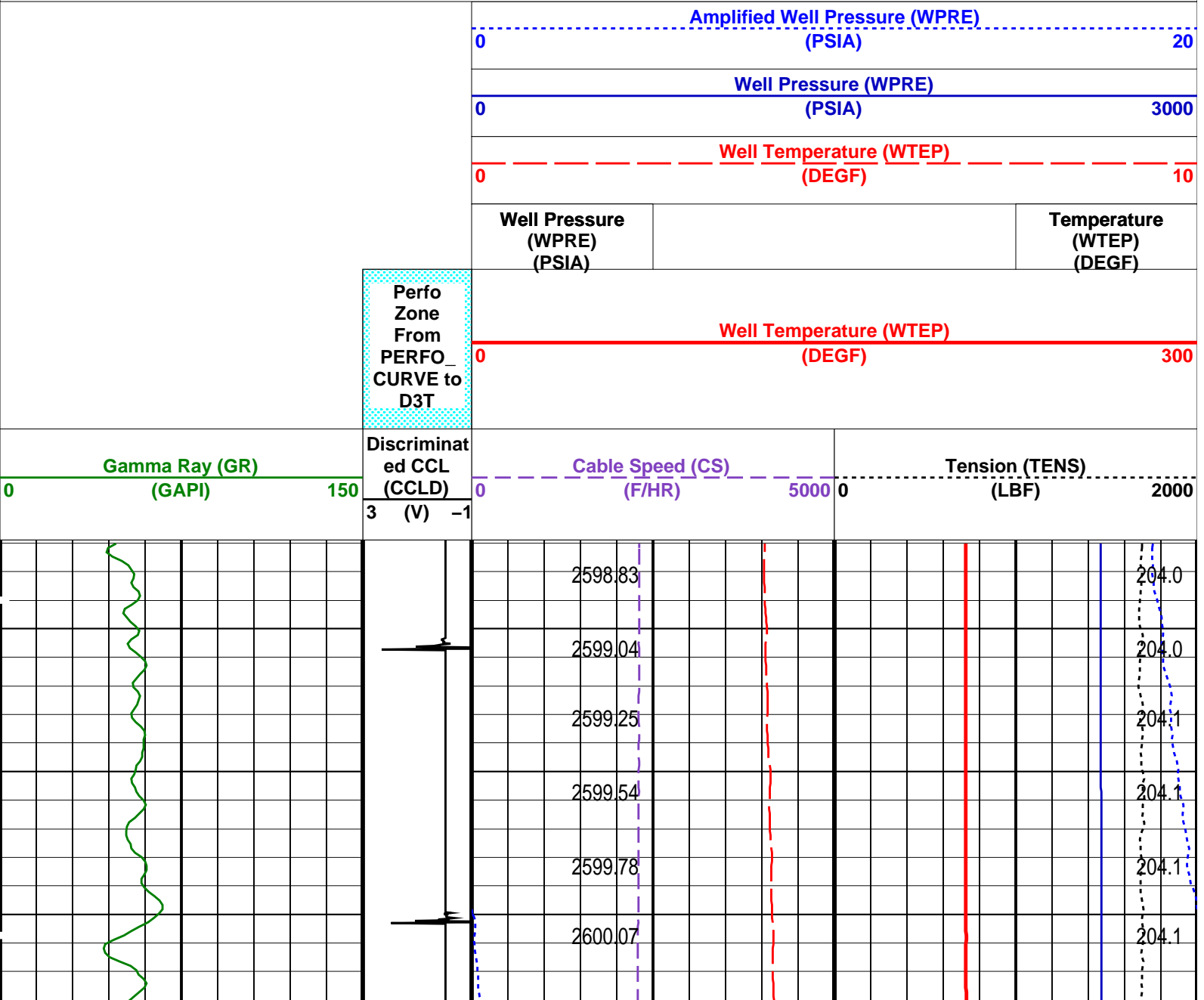
DEFAULT	PSP_058PUP	FN:57	PRODUCER	02-May-2008 01:43	4315.4 M	4206.8 M
---------	------------	-------	----------	-------------------	----------	----------

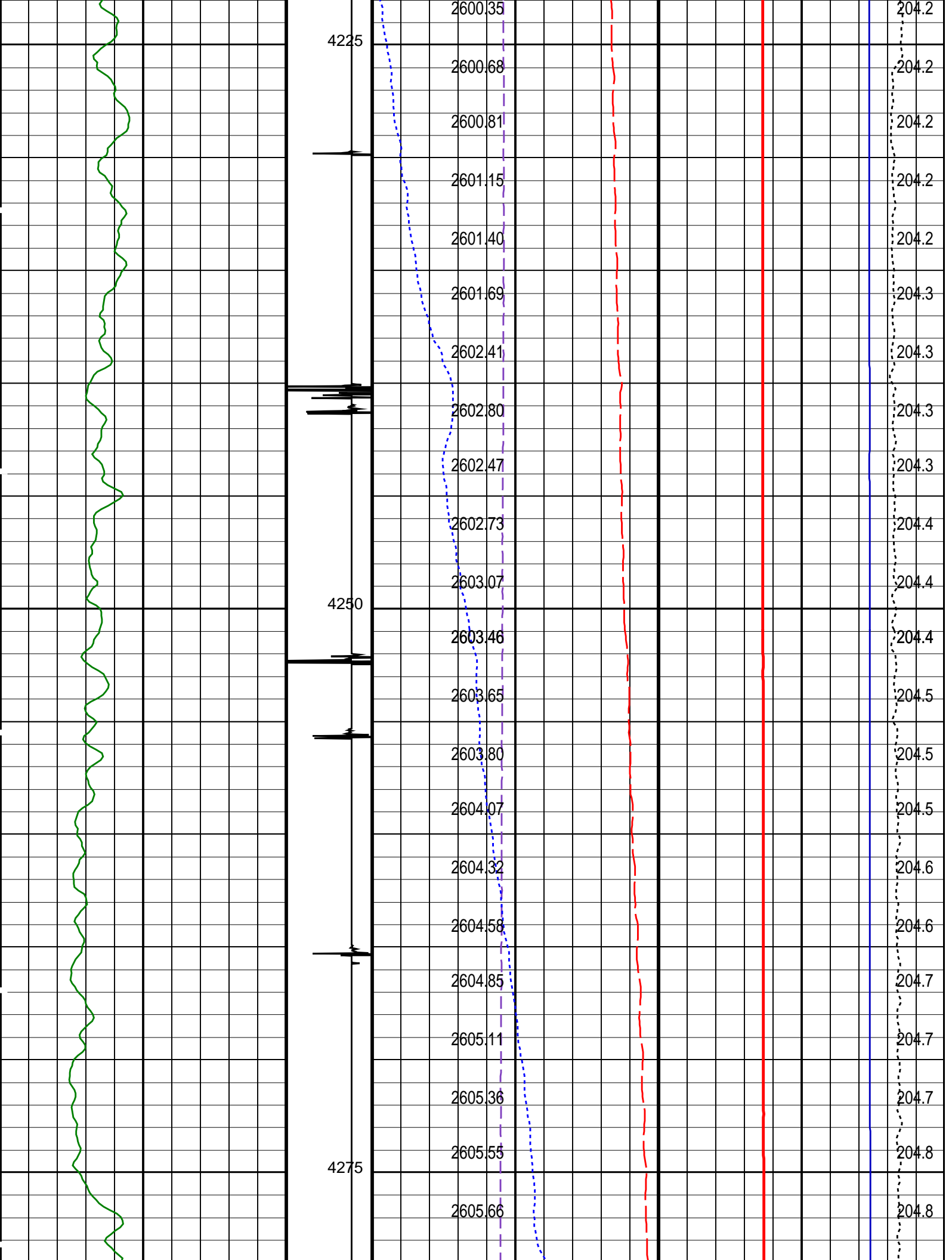
OP System Version: 15C0-309
MCM

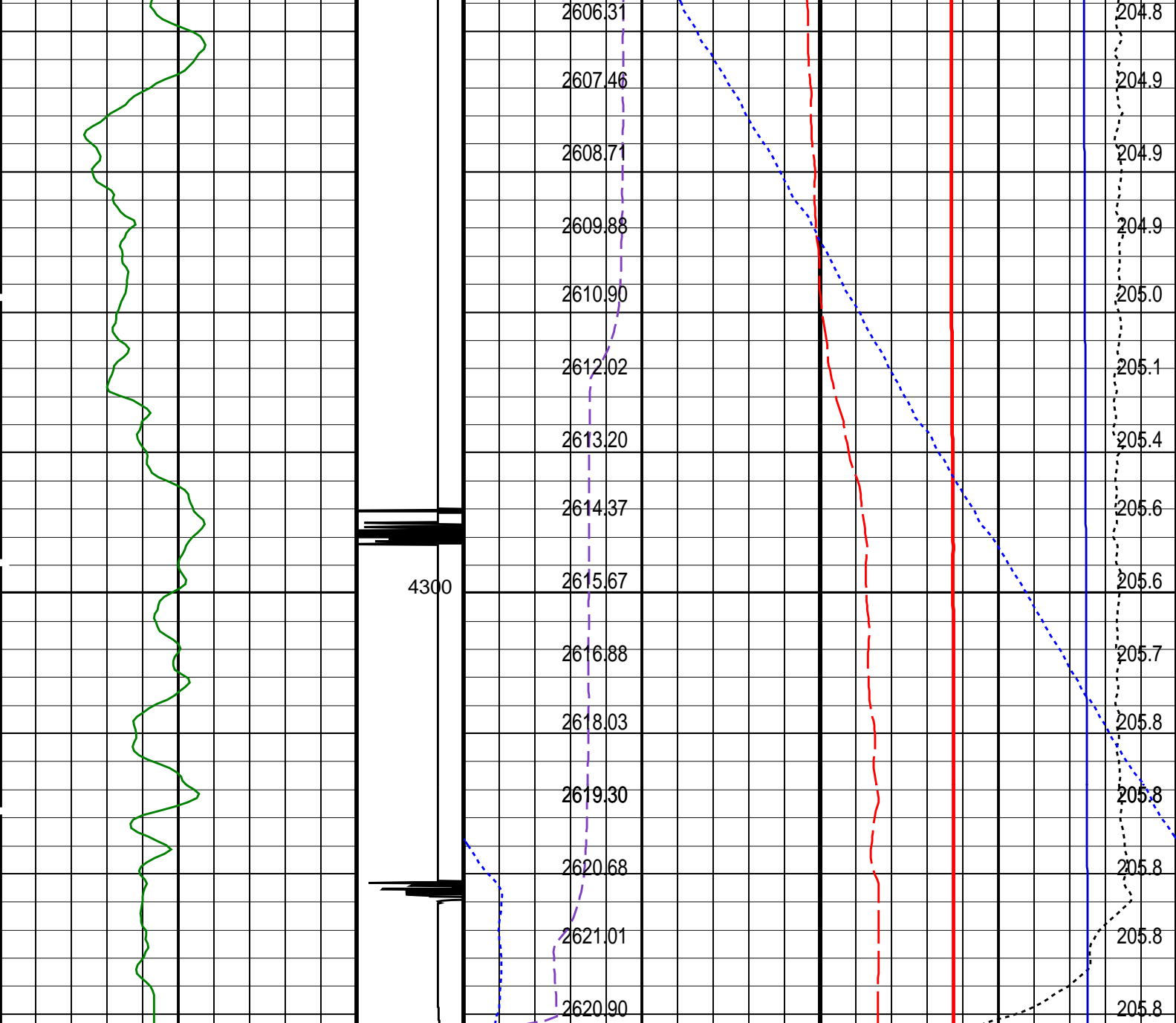
PSPT-A/B	SRPC-3546-Q1_2008_OP15
----------	------------------------

PIP SUMMARY

Time Mark Every 60 S







Gamma Ray (GR) (GAPI)		0	150
Discriminat ed CCL (CCLD)		0	5000
3 (V) -1		0	2000
		Tension (TENS) (LBF)	

Perfo
Zone
From
PERFO_
CURVE to
D3T

Well Temperature (WTEP)		
0	(DEGF)	300
Well Pressure (WPRE) (PSIA)		Temperature (WTEP) (DEGF)
Well Temperature (WTEP)		
0	(DEGF)	10
Well Pressure (WPRE)		
0	(PSIA)	3000
Amplified Well Pressure (WPRE)		
0	(PSIA)	20

Time Mark Every 60 S

Format: PSP_1

Vertical Scale: 1:200

Graphics File Created: 02-May-2008 01:43

OP System Version: 15C0-309

MCM

PSPT-A/B

SRPC-3546-Q1_2008_OP15

Parameters

DLIS Name	Description	Value
DO	System and Miscellaneous	3.1
PP	Depth Offset for Playback	M
	Playback Processing	NORMAL

Input DLIS Files

DEFAULT	PSP_056LUP	FN:55	PRODUCER	02-May-2008 01:15	4312.3 M	4203.3 M
---------	------------	-------	----------	-------------------	----------	----------

Output DLIS Files

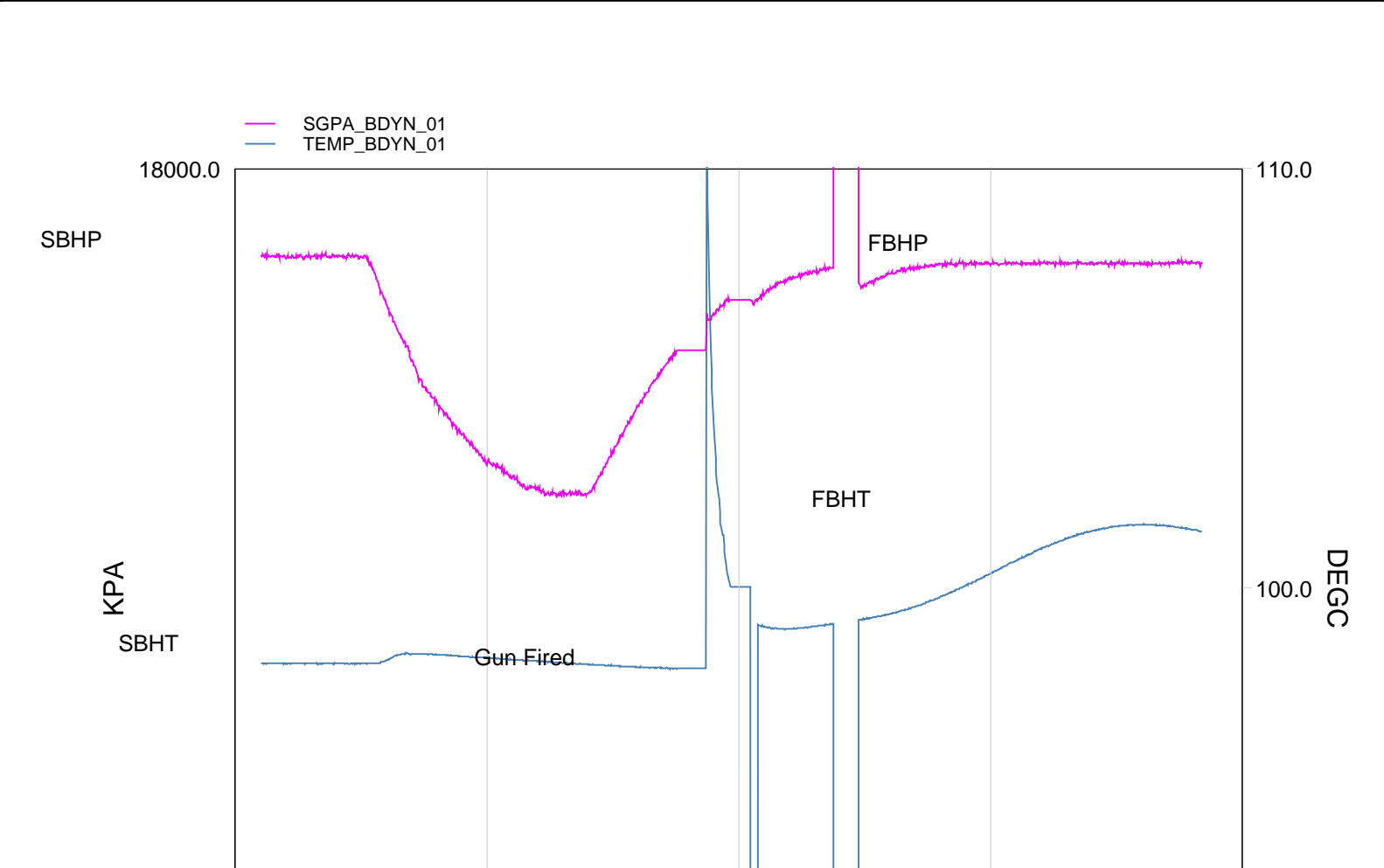
DEFAULT	PSP_058PUP	FN:57	PRODUCER	02-May-2008 01:43		
---------	------------	-------	----------	-------------------	--	--

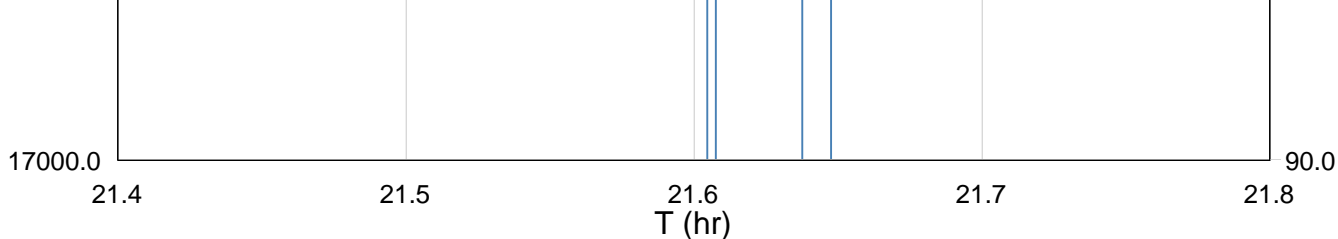
Schlumberger

GUN # 1

4296m to 4301m MDKB

MAXIS Field Log





TIME	DEGF	PSIA
5520.0	214.70	2594.312
5460.0	214.68	2594.276
5400.0	214.36	2594.460
5340.0	213.68	2594.470
5280.0	212.79	2594.470
5220.0	211.91	2593.909
5160.0	211.20	2593.678
5100.0	210.75	2590.937
5040.0	210.45	2593.568
4980.0	210.26	2591.469
4920.0	212.06	2588.117
4860.0	208.56	2579.298
4800.0	208.58	2576.010
4740.0	208.67	2564.116
4680.0	208.76	2554.692
4620.0	208.89	2555.451
4560.0	209.02	2559.594
4500.0	209.13	2567.025
4440.0	209.18	2578.962
4380.0	208.80	2594.789
4320.0	208.80	2595.991
4260.0	208.78	2595.540
4200.0	208.79	2595.834

Schlumberger

GUN # 1
Shooting Pass

MAXIS Field Log

Company: Esso Australia Pty Ltd.

Well: A-26

Output DLIS Files

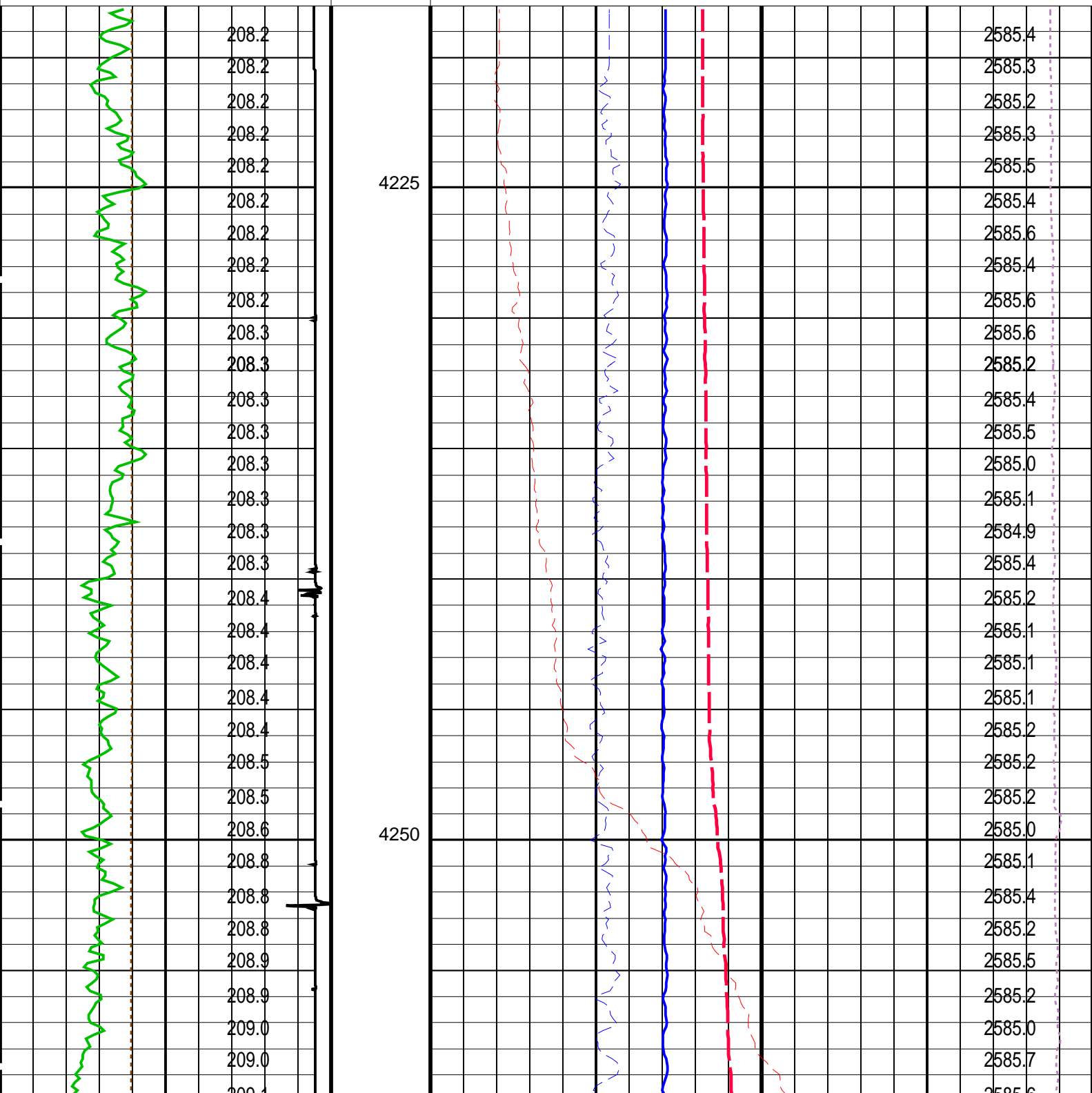
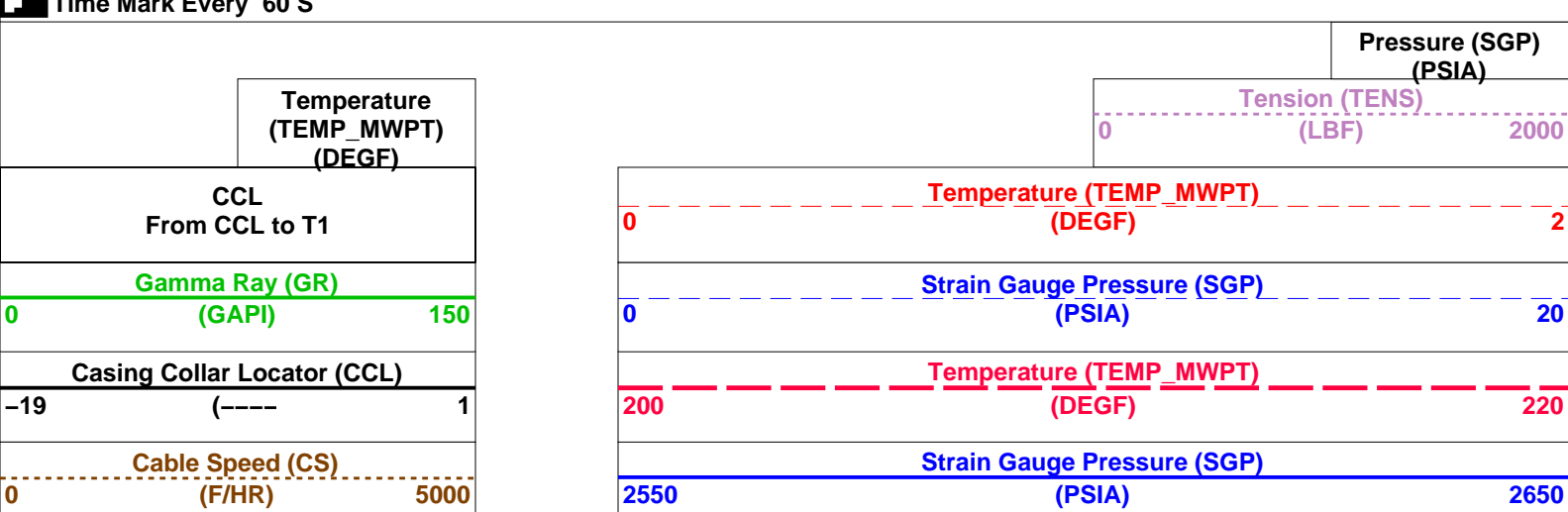
DEFAULT	PERFO_041LUP	FN:40	PRODUCER	01-May-2008 21:18	4314.6 M	4218.0 M
---------	--------------	-------	----------	-------------------	----------	----------

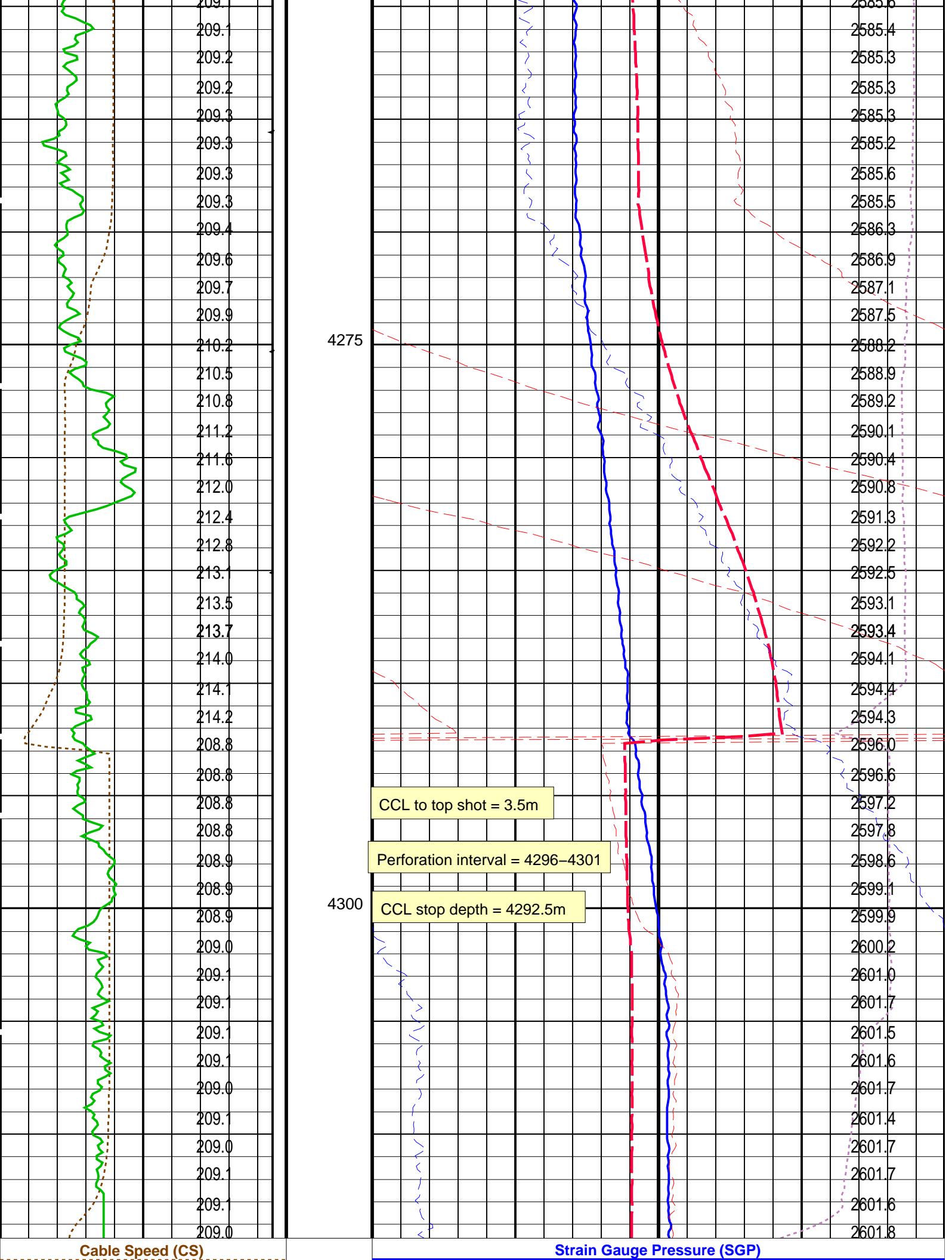
OP System Version: 15C0-309

MCM

MWP_GUN	SRPC-3546-Q1_2008_OP15	MWPT-CA	SRPC-3546-Q1_2008_OP15
MWGT-AA	SRPC-3546-Q1_2008_OP15		

PIP SUMMARY





0	(F/HR)	5000	2550	(PSIA)	2650
Casing Collar Locator (CCL)			Temperature (TEMP_MWPT)		
-19	(----	1	200	(DEGF)	220
Gamma Ray (GR)			Strain Gauge Pressure (SGP)		
0	(GAPI)	150	0	(PSIA)	20
CCL From CCL to T1			Temperature (TEMP_MWPT)		
			0	(DEGF)	2
			Tension (TENS)		
			(LBF)		
			0		2000
			Pressure (SGP)		
			(PSIA)		

PIP SUMMARY					
Time Mark Every 60 S					

Parameters			
DLIS Name	Description	Value	
MWPT-CA: MEASUREMENT WHILE PERFORATING TOOL			
DEVI_FL_CORR	Deviation Angle for Flow Line Correction	0	DEG
FLD	Flow Line Density	1	G/C3
MWPT_NULL_SOURCE	MWPT NULL Temperature Source	TEMS	
MWPT_NULL_TEMP	MWPT NULL Temperature	0.0	DEGC
Format: MWP	Vertical Scale: 1:200	Graphics File Created: 01-May-2008 21:18	

OP System Version: 15C0-309			
MCM			
MWP_GUN	SRPC-3546-Q1_2008_OP15	MWPT-CA	SRPC-3546-Q1_2008_OP15
MWGT-AA	SRPC-3546-Q1_2008_OP15		

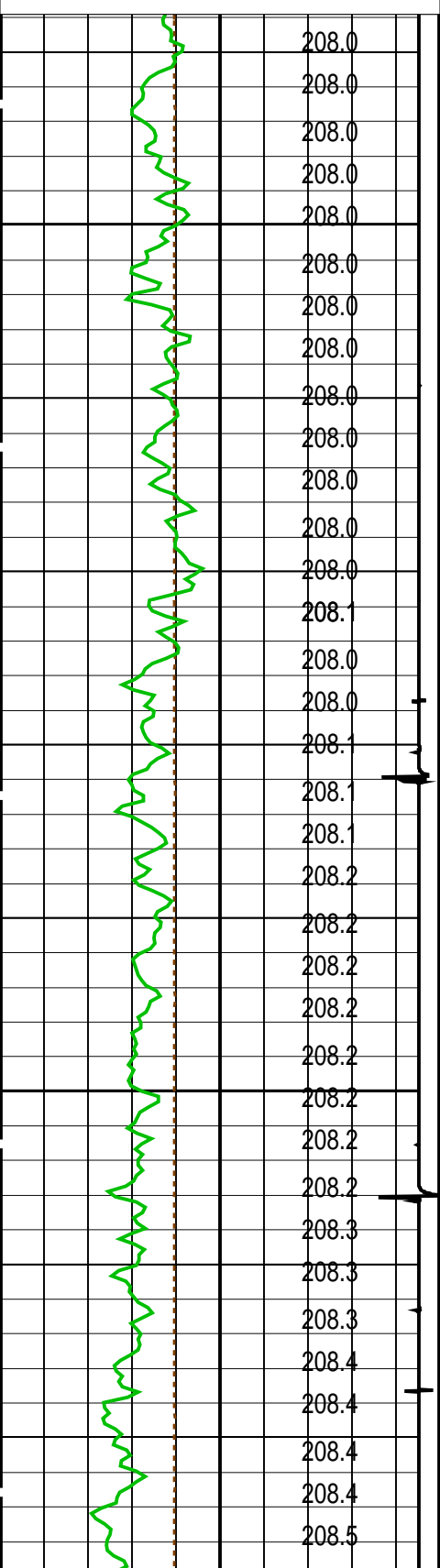
Output DLIS Files					
DEFAULT	PERFO_041LUP	FN:40	PRODUCER	01-May-2008 21:18	

<div> <div>Schlumberger</div> <div>GUN # 1</div> <div>Correlation Pass</div> </div>					
MAXIS Field Log					

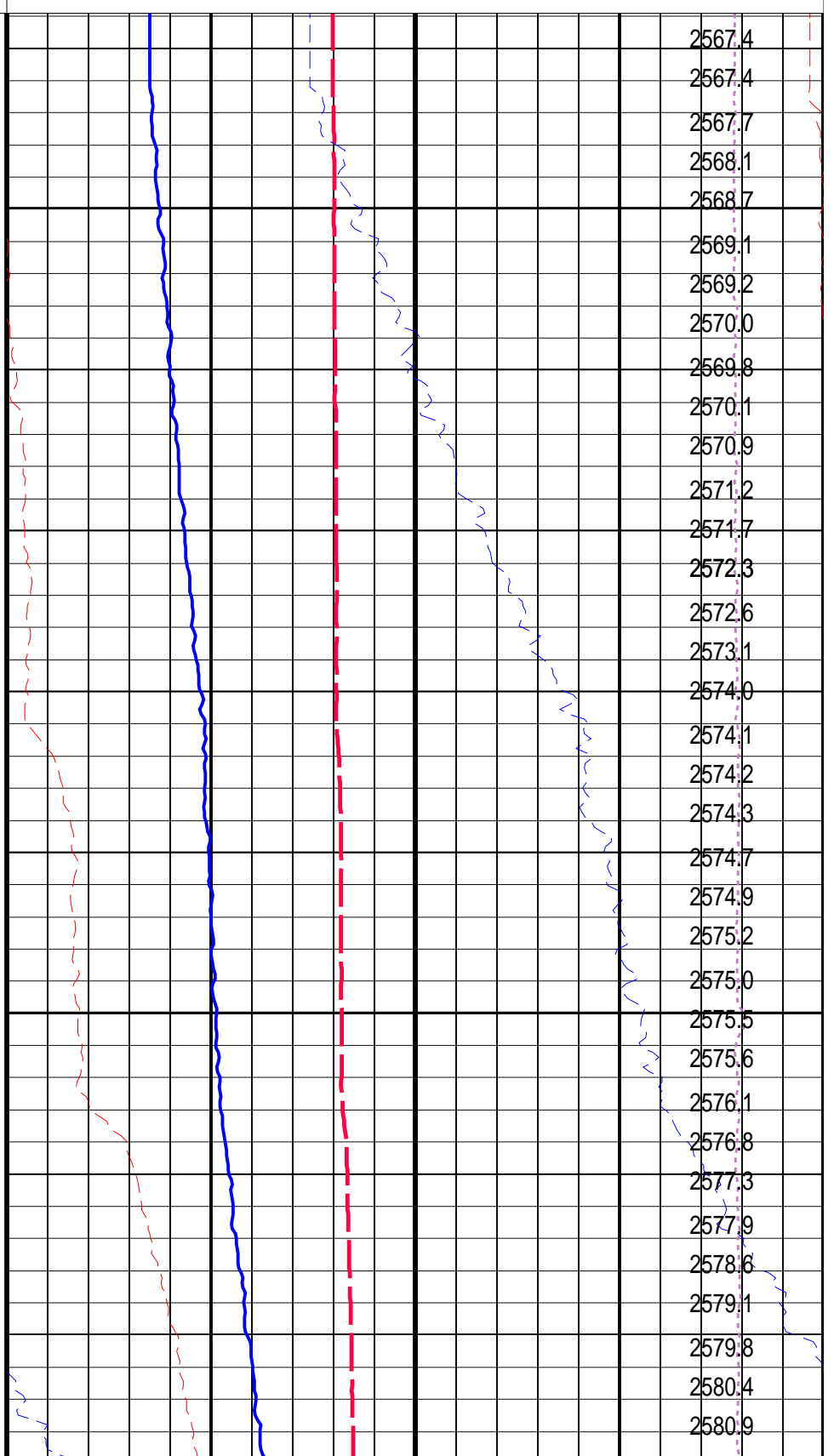
Company: Esso Australia Pty Ltd.					Well: A-26
Output DLIS Files					
DEFAULT	PERFO_040LUP	FN:39	PRODUCER	01-May-2008 21:05	4307.7 M 4218.9 M
OP System Version: 15C0-309					
MCM					
MWP_GUN	SRPC-3546-Q1_2008_OP15	MWPT-CA	SRPC-3546-Q1_2008_OP15		
MWGT-AA	SRPC-3546-Q1_2008_OP15				

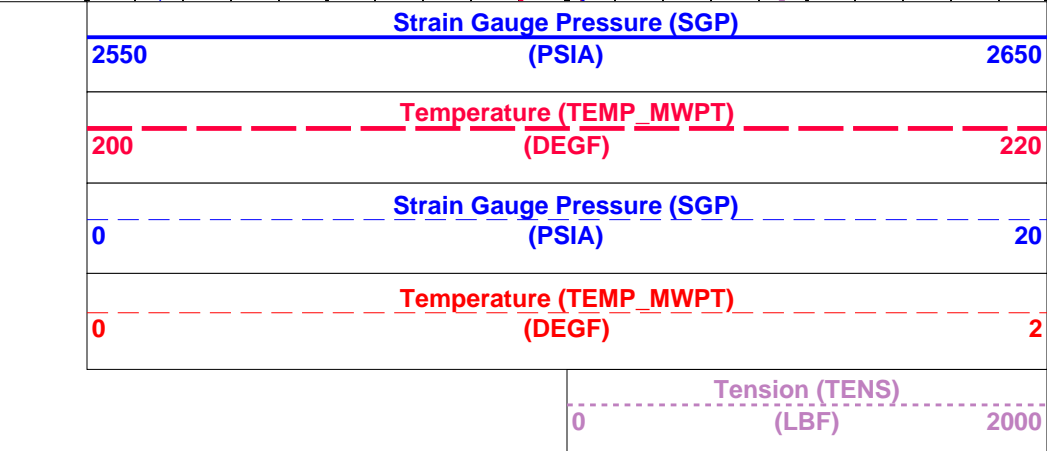
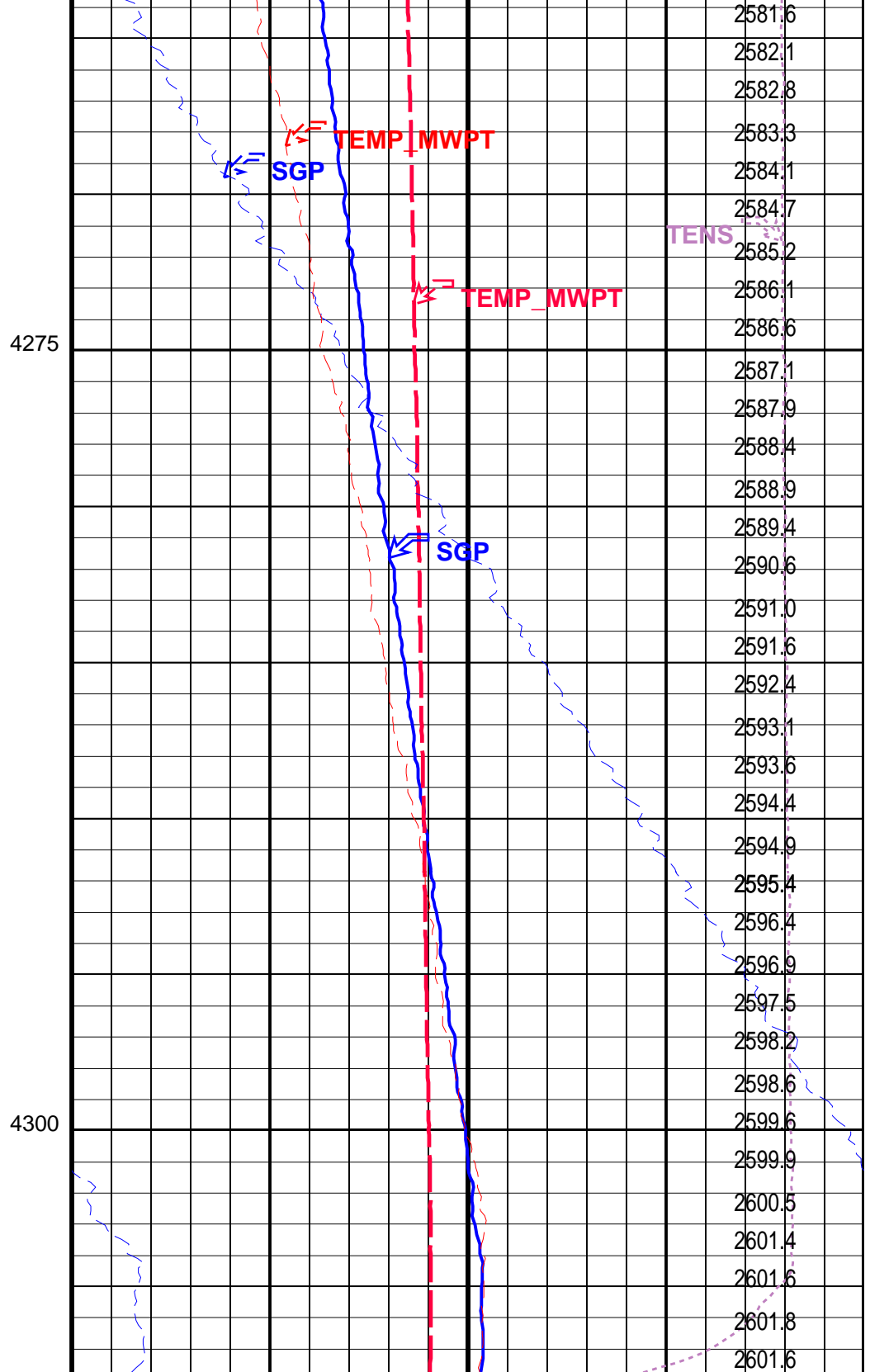
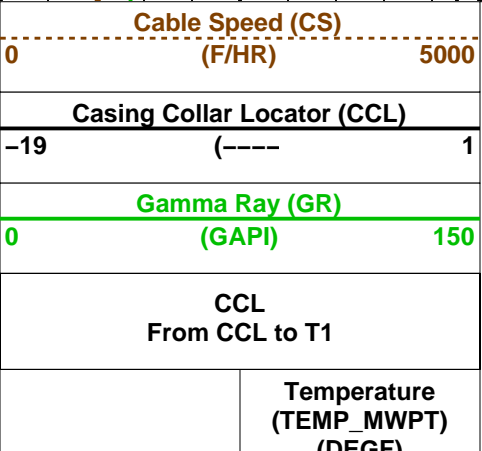
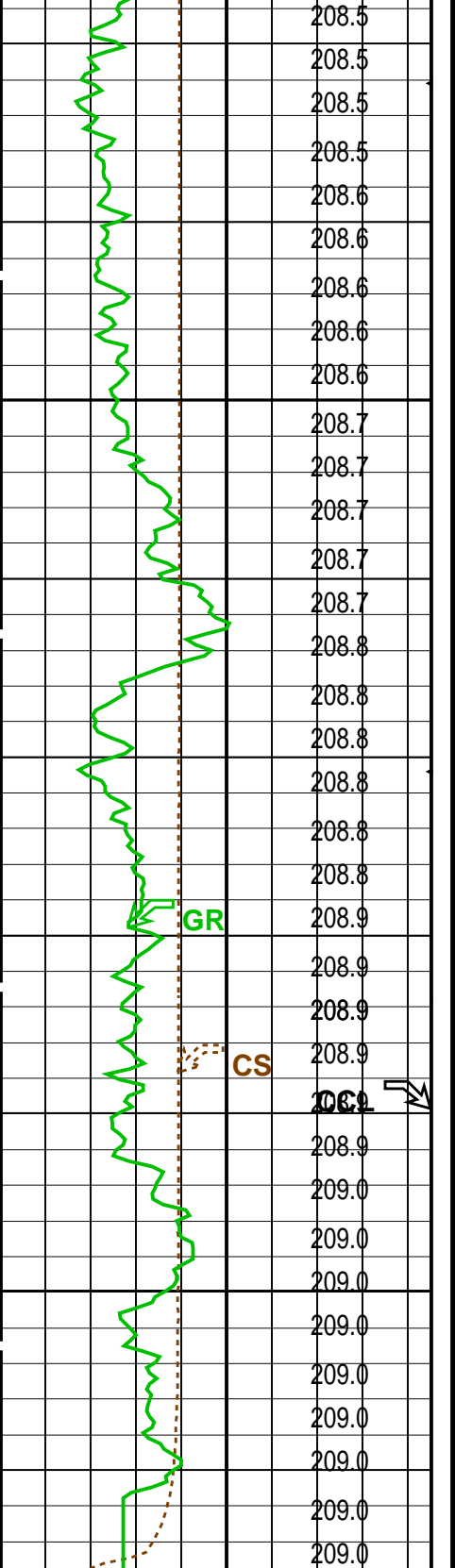
PIP SUMMARY					
Time Mark Every 60 S					
			Pressure (SGP)		
			(PSIA)		
Temperature			Tension (TENS)		

	(TEMP_MWPT) (DEGF)
CCL From CCL to T1	
Gamma Ray (GR) (GAPI)	
0	150
Casing Collar Locator (CCL)	
-19	1
Cable Speed (CS) (F/HR)	
0	5000



	0	(LBF)	2000
Temperature (TEMP_MWPT) (DEGF)			
0			2
Strain Gauge Pressure (SGP) (PSIA)			
0			20
Temperature (TEMP_MWPT) (DEGF)			
200			220
Strain Gauge Pressure (SGP) (PSIA)			
2550			2650





(DLIS)		Pressure (SGP) (PSIA)	
PIP SUMMARY			
Time Mark Every 60 S			
Parameters			
DLIS Name	Description	Value	
MWPT-CA: MEASUREMENT WHILE PERFORATING TOOL			
DEVI_FL_CORR	Deviation Angle for Flow Line Correction	0	DEG
FLD	Flow Line Density	1	G/C3
MWPT_NULL_SOURCE	MWPT NULL Temperature Source	TEMS	
MWPT_NULL_TEMP	MWPT NULL Temperature	0.0	DEGC
Format: MWP Vertical Scale: 1:200		Graphics File Created: 01-May-2008 21:05	
OP System Version: 15C0-309			
MCM			
MWP_GUN	SRPC-3546-Q1_2008_OP15	MWPT-CA	SRPC-3546-Q1_2008_OP15
MWGT-AA	SRPC-3546-Q1_2008_OP15		
Output DLIS Files			
DEFAULT	PERFO_040LUP	FN:39 PRODUCER	01-May-2008 21:05
Company: Esso Australia Pty Ltd.			
Well: A-26			
Field: Bream A			
Rig : Prod4 / Crane			
Country: Australia			
2-1/8" Phased Powerjet Perforation			
4-1/2" MPBT Plug			
Setting Record			

Schlumberger