



Company: Esso Australia Pty Ltd.

Well: A-26  
Field: Bream A  
Rig : Prod4 / Crane  
Country: Australia

Prod4 / Crane

Rig :  
Field:  
Location:  
Well:  
Company:

Bream A  
Gippsland  
A-26  
Esso Australia Pty Ltd.

RST-C  
Sigma  
Survey

Gippsland  
Basin  
Bass Strait

Elev.:  
K.B. 32.82 m  
G.L. -59 m  
D.F. 32.82 m

LOCATION

Permanent Datum:  
Log Measured From:  
Drilling Measured From:

M.S.L.  
D.F.  
D.F.

Elev.:  
0 m  
32.8 m  
above Perm. Datum

State :  
Victoria

Max. Well Deviation  
72 deg

Longitude  
147 46'15"E

Latitude  
038 30'04"S

|                               |                     |                  |       |  |  |
|-------------------------------|---------------------|------------------|-------|--|--|
| Logging Date                  | 1-May-2008          |                  |       |  |  |
| Run Number                    | One                 |                  |       |  |  |
| Depth Driller                 | 4313 m              |                  |       |  |  |
| Schlumberger Depth            | 4316 m              |                  |       |  |  |
| Bottom Log Interval           | 4310 m              |                  |       |  |  |
| Top Log Interval              | 4220 m              |                  |       |  |  |
| Casing Fluid Type             | Production Fluids   |                  |       |  |  |
| Salinity                      |                     |                  |       |  |  |
| Density                       |                     |                  |       |  |  |
| Fluid Level                   | 1306 m              |                  |       |  |  |
| BIT/CASING/TUBING STRING      |                     |                  |       |  |  |
| Bit Size                      | 8.500 in            |                  |       |  |  |
| From                          | 4148 m              |                  |       |  |  |
| To                            | 4425 m              |                  |       |  |  |
| Casing/Tubing Size            | 4.500 in            |                  |       |  |  |
| Weight                        | 37.6 lbn/ft         |                  |       |  |  |
| Grade                         | L-80                |                  |       |  |  |
| From                          | 3501.45 m           |                  |       |  |  |
| To                            | 4425 m              |                  |       |  |  |
| Maximum Recorded Temperatures | 206 degF            |                  |       |  |  |
| Logger On Bottom              | 1-May-2008          |                  | 12:15 |  |  |
| Unit Number                   | Location            | 889 Prod4 / Ausl |       |  |  |
| Recorded By                   | G Wright & O Darby. |                  |       |  |  |
| Witnessed By                  | B White & J Dean.   |                  |       |  |  |

|                               |          |       |
|-------------------------------|----------|-------|
| PVT DATA                      |          | Run 1 |
| Oil Density                   |          |       |
| Water Salinity                |          |       |
| Gas Gravity                   |          |       |
| Bo                            |          |       |
| Bw                            |          |       |
| 1/Bg                          |          |       |
| Bubble Point Pressure         |          |       |
| Bubble Point Temperature      |          |       |
| Solution GOR                  |          |       |
| Maximum Deviation             | 72 deg   |       |
| CEMENTING DATA                |          |       |
| Primary/Squeeze               | Primary  |       |
| Casing String No              |          |       |
| Lead Cement Type              |          |       |
| Volume                        |          |       |
| Density                       |          |       |
| Water Loss                    |          |       |
| Additives                     |          |       |
| Tail Cement Type              |          |       |
| Volume                        |          |       |
| Density                       |          |       |
| Water Loss                    |          |       |
| Additives                     |          |       |
| Expected Cement Top           |          |       |
| Logging Date                  |          |       |
| Run Number                    |          |       |
| Depth Driller                 |          |       |
| Schlumberger Depth            |          |       |
| Bottom Log Interval           |          |       |
| Top Log Interval              |          |       |
| Casing Fluid Type             |          |       |
| Salinity                      |          |       |
| Density                       |          |       |
| Fluid Level                   |          |       |
| BIT/CASING/TUBING STRING      |          |       |
| Bit Size                      |          |       |
| From                          |          |       |
| To                            |          |       |
| Casing/Tubing Size            |          |       |
| Weight                        |          |       |
| Grade                         |          |       |
| From                          |          |       |
| To                            |          |       |
| Maximum Recorded Temperatures |          |       |
| Logger On Bottom              | Time     |       |
| Unit Number                   | Location |       |
| Recorded By                   |          |       |
| Witnessed By                  |          |       |

## DEPTH SUMMARY LISTING

Date Created: 30-APR-2008 11:17:19

### Depth System Equipment

| Depth Measuring Device                                                                                                                                                                    | Tension Device                                                                                                                                                       | Logging Cable                                                                                                 |
|-------------------------------------------------------------------------------------------------------------------------------------------------------------------------------------------|----------------------------------------------------------------------------------------------------------------------------------------------------------------------|---------------------------------------------------------------------------------------------------------------|
| Type: IDW-EB<br>Serial Number: 6373<br>Calibration Date: 04-Jan-2007<br>Calibrator Serial Number: 9<br>Calibration Cable Type: 2-23ZT<br>Wheel Correction 1: -2<br>Wheel Correction 2: -4 | Type: PSDS/OSDS<br>Serial Number: 325357<br>Calibration Date: 30-Apr-2008<br>Calibrator Serial Number: 1174<br>Calibration Gain: 0.95<br>Calibration Offset: -494.00 | Type: 2-32ZT<br>Serial Number: 27244<br>Length: 6409.94 M<br>Conveyance Method: Wireline<br>Rig Type: Rigless |

### Depth Control Parameters

|                           |                             |
|---------------------------|-----------------------------|
| Log Sequence:             | Subsequent Log In the Well  |
| Reference Log Name:       | ExxonMobil correlation log. |
| Reference Log Run Number: |                             |
| Reference Log Date:       | .                           |

### Depth Control Remarks

|                                               |
|-----------------------------------------------|
| 1. IDW-EB 6373 used as primary depth control. |
| 2. Z-Chart as secondary control.              |
| 3.                                            |
| 4.                                            |
| 5.                                            |
| 6.                                            |

#### DISCLAIMER

THE USE OF AND RELIANCE UPON THIS RECORDED-DATA BY THE HEREIN NAMED COMPANY (AND ANY OF ITS AFFILIATES, PARTNERS, REPRESENTATIVES, AGENTS, CONSULTANTS AND EMPLOYEES) IS SUBJECT TO THE TERMS AND CONDITIONS AGREED UPON BETWEEN SCHLUMBERGER AND THE COMPANY, INCLUDING: (a) RESTRICTIONS ON USE OF THE RECORDED-DATA; (b) DISCLAIMERS AND WAIVERS OF WARRANTIES AND REPRESENTATIONS REGARDING COMPANY'S USE OF AND RELIANCE UPON THE RECORDED-DATA; AND (c) CUSTOMER'S FULL AND SOLE RESPONSIBILITY FOR ANY INFERENCE DRAWN OR DECISION MADE IN CONNECTION WITH THE USE OF THIS RECORDED-DATA.

|                    |
|--------------------|
| OTHER SERVICES1    |
| OS1: 2 1/8" Phased |
| OS2: Perforation . |
| OS3: 4.5" MPBT .   |
| OS4: Cement Dump   |
| OS5: Bailer        |

|                                                                       |
|-----------------------------------------------------------------------|
| REMARKS: RUN NUMBER 1                                                 |
| Log correlated to ExxonMobil composite supplied with logging program. |
| Maximum well deviation = 72 degrees at 4005m MDKB.                    |
| Objective: Conduct RST Sigma survey from HUD 4315m to 4220m MDKB      |
| making 3 passes @ 900ft/hr with the well shut in .                    |
| SBHP: 2620 psia                                                       |
| SBHT: 206 degf                                                        |
| HUD: 4315m MDKB                                                       |
| Following this survey the well will be re-perforated and              |

Following this survey the well will be re-perforated and re-plugged with a 4.5" Mpbtp plug.

Crew : J Annear,A McLellan,P Lawrence,C J Light.

RUN 1

SERVICE ORDER #: Ausl07509096  
PROGRAM VERSION: 15C0-309  
FLUID LEVEL: 1306 m

| LOGGED INTERVAL | START | STOP | LOGGED INTERVAL | START | STOP |
|-----------------|-------|------|-----------------|-------|------|
|                 |       |      |                 |       |      |
|                 |       |      |                 |       |      |
|                 |       |      |                 |       |      |
|                 |       |      |                 |       |      |

EQUIPMENT DESCRIPTION

RUN 1

SURFACE EQUIPMENT

WITM-A  
PSC\_16MHZ 806

DOWNHOLE EQUIPMENT

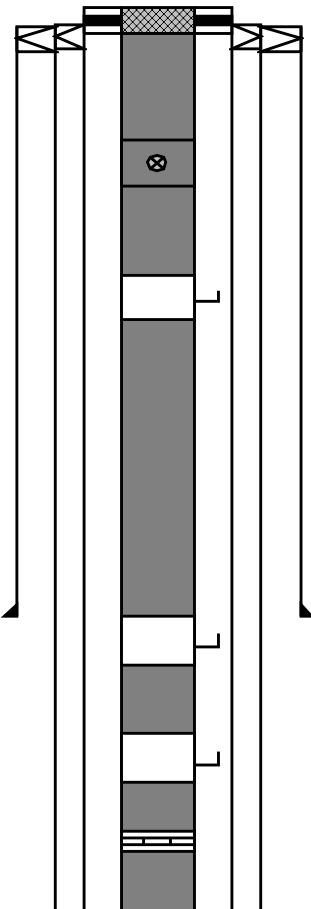
|                     |                                            |                              |
|---------------------|--------------------------------------------|------------------------------|
| AH-SWBS-B 787       |                                            | 11.93                        |
| AH-SWBS-B 786       |                                            | 11.24                        |
| AH-SWBS-B 785       |                                            | 10.55                        |
| MH-SWHS-A 759       | Detail MT<br>TelStatus<br>CTEM             | 9.87                         |
| PSPT-A/B 827        |                                            | 9.54                         |
| PSC-A 806           |                                            |                              |
| PSPT-B 827          |                                            |                              |
| PSTC 806            |                                            |                              |
| PBMS-B 827          |                                            |                              |
| CQG_F_Mano 827      |                                            |                              |
| RTD Thermometer 827 | GR                                         | 8.41                         |
| GR 827              |                                            |                              |
| CCL 827             |                                            |                              |
| PBMS 827            |                                            |                              |
|                     | Well_Temp<br>CQG Manom<br>CCL<br>PBMS PSTC | 7.48<br>7.37<br>7.25<br>7.02 |
| RST-C RED1          |                                            | 7.02                         |
| RSCH-A 98           |                                            |                              |
| RSC-C 116           |                                            |                              |
| RSS-A 93            |                                            |                              |
| RSXH-A 179          |                                            |                              |
| RSX-C 101           |                                            |                              |

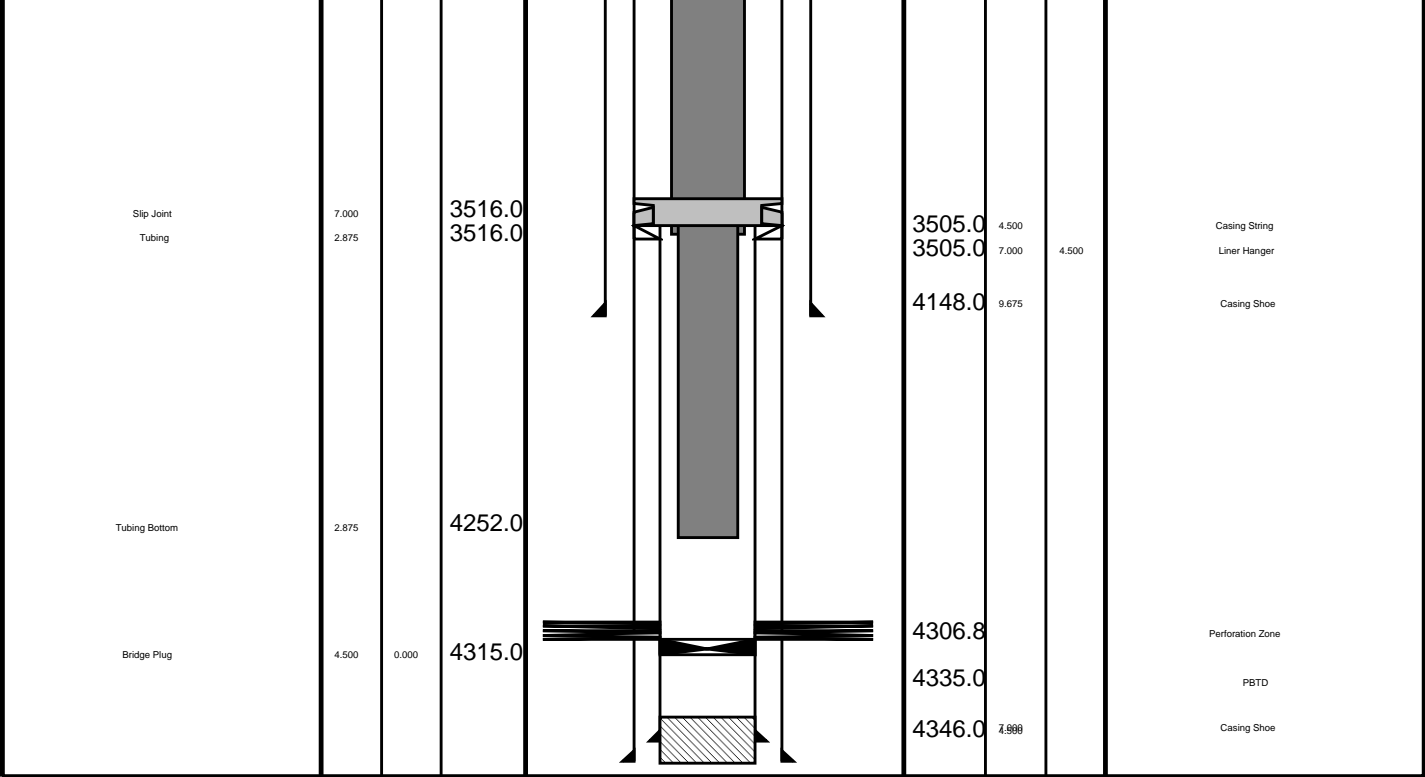
RSC-A Far  
RSC-A PNG  
RSC-A Nea  
RSX-A PNG

4.24  
4.09

Tension HV  
TOOL ZERO

MAXIMUM STRING DIAMETER 1.72 IN  
MEASUREMENTS RELATIVE TO TOOL ZERO  
ALL LENGTHS IN METERS

| Production String       | (m)   |       | Well Schematic                                                                      | (m)    |        |        | Casing String                                                                   |
|-------------------------|-------|-------|-------------------------------------------------------------------------------------|--------|--------|--------|---------------------------------------------------------------------------------|
|                         | OD    | ID    |                                                                                     | MD     | OD     | ID     |                                                                                 |
| Tubing Hanger<br>Tubing | 7.000 | 3.500 |  | 12.0   | 13.375 | 9.675  | Casing String<br>Casing String<br>Liner Hanger<br>Casing String<br>Liner Hanger |
|                         | 3.500 |       |                                                                                     | 13.8   |        |        |                                                                                 |
| Shutin Valve            | 3.500 |       |                                                                                     | 445.0  |        |        |                                                                                 |
| Gas Lift Mandrel        | 3.500 |       |                                                                                     | 811.0  |        |        |                                                                                 |
| Gas Lift Mandrel        | 3.500 |       |                                                                                     | 1794.0 | 1620.0 | 13.375 | Casing Shoe                                                                     |
| Gas Lift Mandrel        | 3.500 |       |                                                                                     | 2232.0 |        |        |                                                                                 |
| Nipple                  | 3.500 |       |                                                                                     | 2248.0 |        |        |                                                                                 |



# Job Event Summary

MAXIS Field Log

## Schlumberger Job Event Summary

| Time            | Elapsed Time     | Depth (M) | File                           |
|-----------------|------------------|-----------|--------------------------------|
| Simulated Log   | 1-May-2008 9:47  | 000:32    | RST_PSP_016LUP                 |
| Log Pass (down) | 1-May-2008 10:58 | 001:18    | -1.5 - 4323.4 RST_PSP_018LDP   |
| Log Pass (up)   | 1-May-2008 12:16 | 000:16    | 4327.4 - 4210.8 RST_PSP_019LUP |
| Log Pass (up)   | 1-May-2008 12:44 | 000:22    | 4324.5 - 4209.6 RST_PSP_021LUP |
| Log Pass (up)   | 1-May-2008 13:21 | 000:23    | 4318.7 - 4210.8 RST_PSP_022LUP |
| Log Pass (up)   | 1-May-2008 13:47 | 000:28    | 4318.4 - 4203.8 RST_PSP_024LUP |

Company: Esso Australia Pty Ltd. Well: A-26

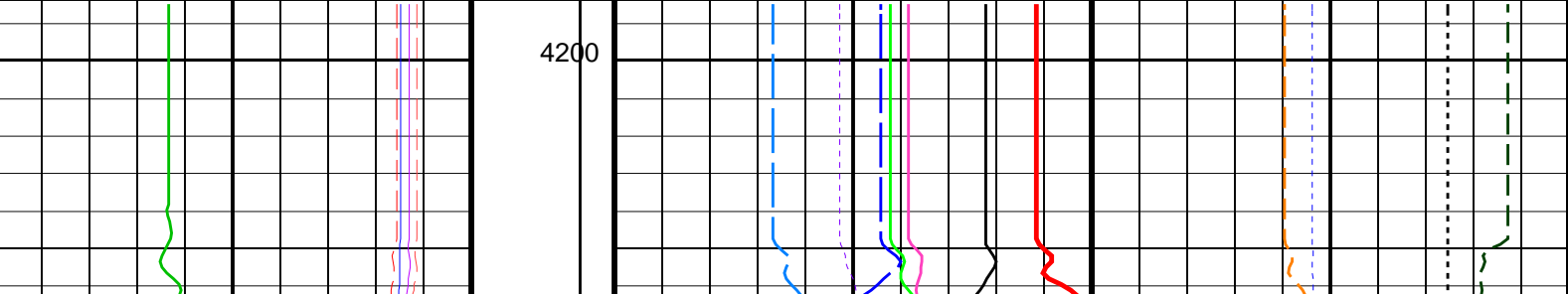
| Input DLIS Files  |                |       |          |                   |          |          |
|-------------------|----------------|-------|----------|-------------------|----------|----------|
| DEFAULT           | RST_PSP_024LUP | FN:23 | PRODUCER | 01-May-2008 13:47 | 4318.4 M | 4203.8 M |
| Output DLIS Files |                |       |          |                   |          |          |
| DEFAULT           | RST_PSP_026PUP | FN:25 | PRODUCER | 01-May-2008 14:42 | 4317.9 M | 4198.3 M |

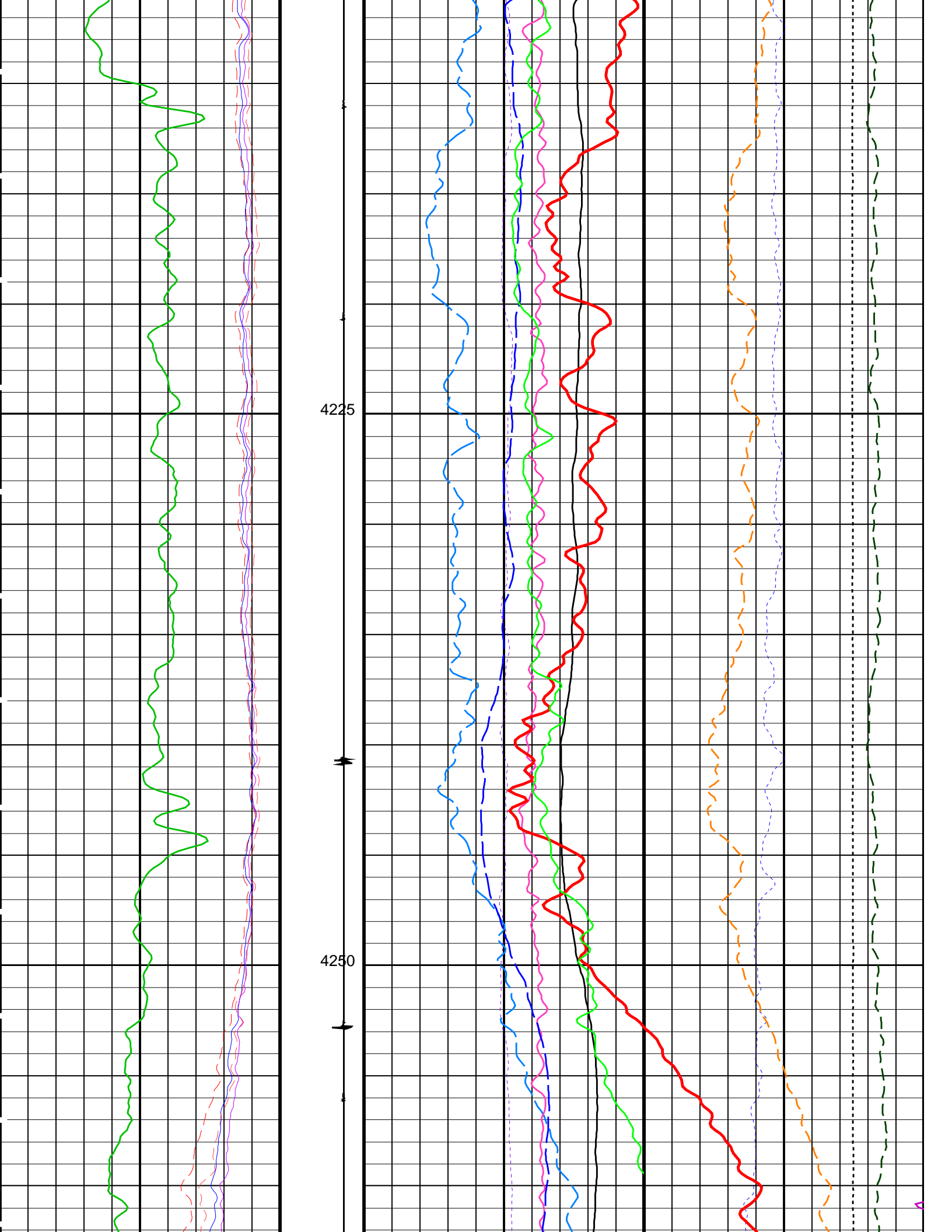
| OP System Version: 15C0-309 |                        |          |                        |  |  |  |
|-----------------------------|------------------------|----------|------------------------|--|--|--|
| MCM                         |                        |          |                        |  |  |  |
| RST-C                       | SRPC-3546-Q1_2008_OP15 | PSPT-A/B | SRPC-3546-Q1_2008_OP15 |  |  |  |

PIP SUMMARY

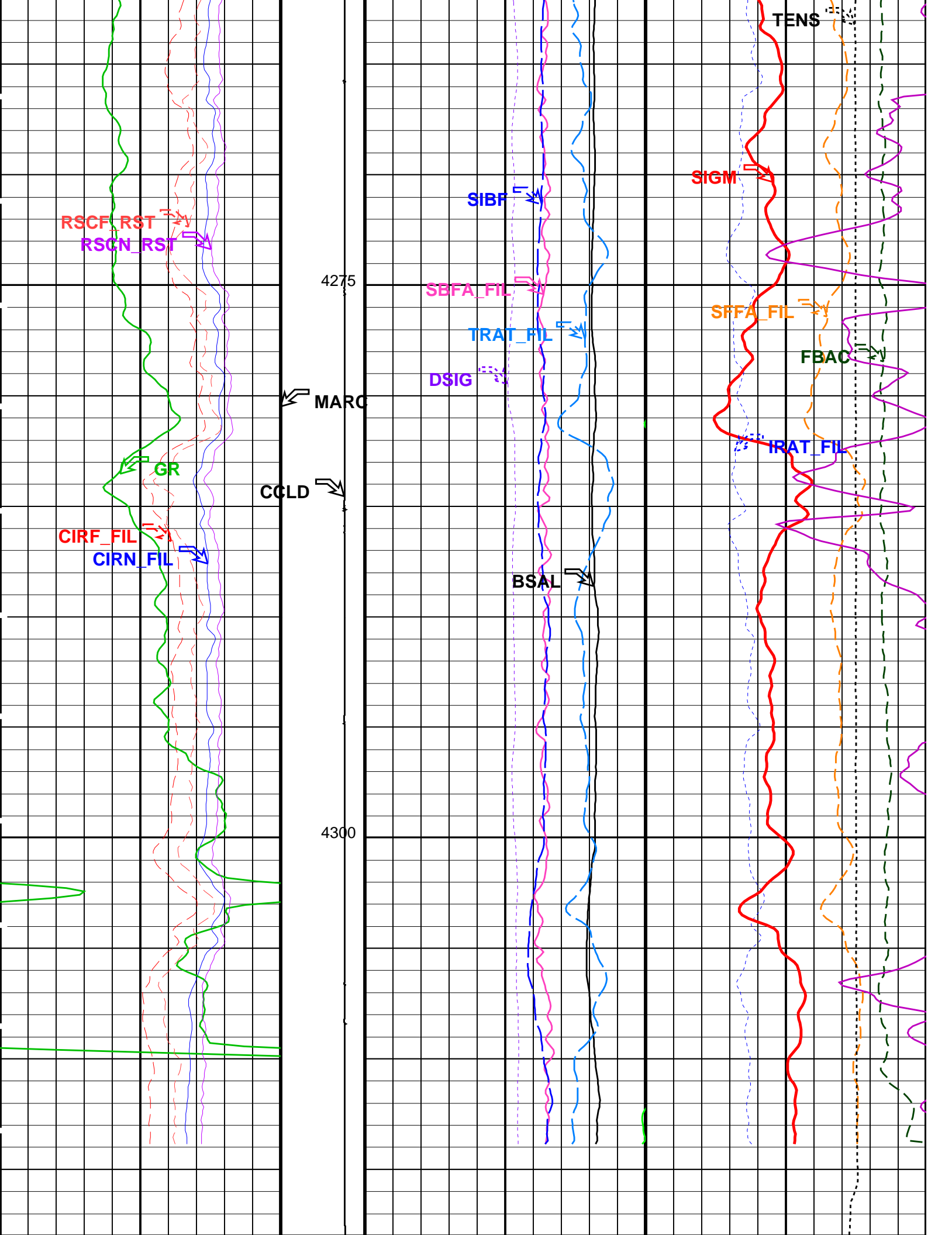
Time Mark Every 60 S

|                                                |  |                                         |  |                                         |  |
|------------------------------------------------|--|-----------------------------------------|--|-----------------------------------------|--|
|                                                |  | RST Sigma (SIGM)                        |  |                                         |  |
|                                                |  | 60 (CU) 0                               |  |                                         |  |
|                                                |  | RST Weighted Inelastic Ratio (WINR_RST) |  |                                         |  |
|                                                |  | 0.4 (---- 0                             |  |                                         |  |
|                                                |  | RST Porosity (TPHI)                     |  |                                         |  |
|                                                |  | 0.6 (V/V) 0                             |  |                                         |  |
| RST Sigma Borehole Fluid (SIBF)                |  |                                         |  |                                         |  |
| 100 (CU) 0                                     |  |                                         |  |                                         |  |
| Sigma Borehole Far Apparent (SBFA_FIL)         |  |                                         |  |                                         |  |
| RST Far Effective Capture CR (RSCF_RST)        |  | 150 (CU) 0                              |  | Tension (TENS)                          |  |
| 45 (---- 0                                     |  |                                         |  | 0 (LBF) 3000                            |  |
| RST Near Effective Capture CR (RSCN_RST)       |  |                                         |  |                                         |  |
| 45 (---- 0                                     |  |                                         |  |                                         |  |
| RST Capture to Inelastic Ratio Far (CIRF_FIL)  |  | RST Capture Ratio (TRAT_FIL)            |  | Sigma Formation Far Apparent (SFFA_FIL) |  |
| 5 (---- 0                                      |  | 1.5 (---- 0.5                           |  | 60 (CU) 0                               |  |
| RST Capture to Inelastic Ratio Near (CIRN_FIL) |  | RST Sigma Difference (DSIG)             |  | MCS Far Background (filtered) (FBAC)    |  |
| 2.5 (---- 0                                    |  | -30 (CU) 30                             |  | 0 (CPS) 5000                            |  |
|                                                |  | 0 (---- 5                               |  |                                         |  |
| Gamma Ray (GR)                                 |  | RST Borehole Salinity (BSAL)            |  | RST Inelastic Ratio (IRAT_FIL)          |  |
| 0 (GAPI) 150                                   |  | 450 (PPK) -50                           |  | 0.75 (---- 0                            |  |
|                                                |  | 3 (V) -1                                |  |                                         |  |









|                                                   |                                        |                                            |                                                     |
|---------------------------------------------------|----------------------------------------|--------------------------------------------|-----------------------------------------------------|
| Gamma Ray (GR)<br>(GAPI)                          | Discriminat<br>ed CCL<br>(CCLD)<br>(V) | RST Borehole Salinity (BSAL)<br>(PPK)      | RST Inelastic Ratio (IRAT_FIL)<br>(----             |
| 0150                                              | 3-1                                    | 450-50                                     | 0.750                                               |
| RST Capture to Inelastic Ratio Near<br>(CIRN_FIL) | Minitron<br>Arc<br>Detection<br>(MARC) | RST Sigma Difference (DSIG)<br>(CU)        | MCS Far Background (filtered) (FBAC)<br>(CPS)       |
| 2.50                                              | 05                                     | -3030                                      | 05000                                               |
| RST Capture to Inelastic Ratio Far<br>(CIRF_FIL)  |                                        | RST Capture Ratio (TRAT_FIL)<br>(----      | Sigma Formation Far Apparent (SFFA_<br>FIL)<br>(CU) |
| 50                                                |                                        | 1.50.5                                     | 600                                                 |
| RST Near Effective Capture CR (RSCN_<br>RST)      |                                        | Sigma Borehole Far Apparent (SBFA_<br>FIL) | Tension (TENS)<br>(LBF)                             |
| 450                                               |                                        | 1500                                       |                                                     |
| RST Far Effective Capture CR (RSCF_<br>RST)       |                                        | RST Sigma Borehole Fluid (SIBF)<br>(CU)    |                                                     |
| 450                                               |                                        | 1000                                       |                                                     |
|                                                   |                                        | RST Porosity (TPHI)<br>(V/V)               |                                                     |
|                                                   |                                        | 0.60                                       |                                                     |
|                                                   |                                        | RST Weighted Inelastic Ratio (WINR_RST)    |                                                     |
|                                                   |                                        | 0.4                                        |                                                     |
|                                                   |                                        | RST Sigma (SIGM)<br>(CU)                   |                                                     |
|                                                   |                                        | 600                                        |                                                     |

PIP SUMMARY

Time Mark Every 60 S

| Parameters                                     |                                                 |             |      |
|------------------------------------------------|-------------------------------------------------|-------------|------|
| DLIS Name                                      | Description                                     | Value       |      |
| RST-C: Reservoir Saturation Pro Tool C         |                                                 |             |      |
| AIRB                                           | RST Air Borehole                                | No          |      |
| BHS                                            | Borehole Status                                 | CASED       |      |
| BSALOPT                                        | RST Borehole Salinity Option                    | Unknown     |      |
| BSFL                                           | RST Borehole Salinity Filter Length             | 51          |      |
| DFPC                                           | RST Depth Filter Processing Constant            | One         |      |
| DFPC_TDTL                                      | RST Depth Filter Processing Constant (TDT-like) | Two         |      |
| MATR                                           | Rock Matrix for Neutron Porosity Corrections    | SANDSTONE   |      |
| NORM_IRAT_RST                                  | RST Normalized Inelastic Ratio                  | 0.48        |      |
| NORM_SIGM_RST                                  | RST Normalized Sigma                            | 30          | CU   |
| RGAI                                           | Near/Far Gain Calibration Ratio                 | 1           |      |
| TIER_SIGM                                      | RST Sigma Acquisition Mode                      | 0_RST_Sigma |      |
| PSPT-A/B: Production Services Logging Platform |                                                 |             |      |
| BHS                                            | Borehole Status                                 | CASED       |      |
| MATR                                           | Rock Matrix for Neutron Porosity Corrections    | SANDSTONE   |      |
| System and Miscellaneous                       |                                                 |             |      |
| BS                                             | Bit Size                                        | 8.500       | IN   |
| BSAL                                           | Borehole Salinity                               | -50000.00   | PPM  |
| CSIZ                                           | Current Casing Size                             | 4.500       | IN   |
| CWEI                                           | Casing Weight                                   | 37.60       | LB/F |
| DO                                             | Depth Offset for Playback                       | -0.4        | M    |
| PP                                             | Playback Processing                             | NORMAL      |      |

Format: RST\_SIG\_ANSW    Vertical Scale: 1:200    Graphics File Created: 01-May-2008 14:42

| OP System Version: 15C0-309 |                        |          |                        |
|-----------------------------|------------------------|----------|------------------------|
| MCM                         |                        |          |                        |
| RST-C                       | SRPC-3546-Q1_2008_OP15 | PSPT-A/B | SRPC-3546-Q1_2008_OP15 |

| Input DLIS Files  |                |       |          |                   |          |
|-------------------|----------------|-------|----------|-------------------|----------|
| DEFAULT           | RST_PSP_024LUP | FN:23 | PRODUCER | 01-May-2008 13:47 | 4203.8 M |
| Output DLIS Files |                |       |          |                   |          |



RST-C Sigma

Pass # 2 900 ft/hr

MAXIS Field Log

Company: Esso Australia Pty Ltd.

Well: A-26

Input DLIS Files

DEFAULT

RST\_PSP\_022LUP

FN:21

PRODUCER

01-May-2008 13:21

4318.7 M

4210.8 M

Output DLIS Files

DEFAULT

RST\_PSP\_025PUP

FN:24

PRODUCER

01-May-2008 14:41

4318.3 M

4205.3 M

OP System Version: 15C0-309

MCM

RST-C

SRPC-3546-Q1\_2008\_OP15

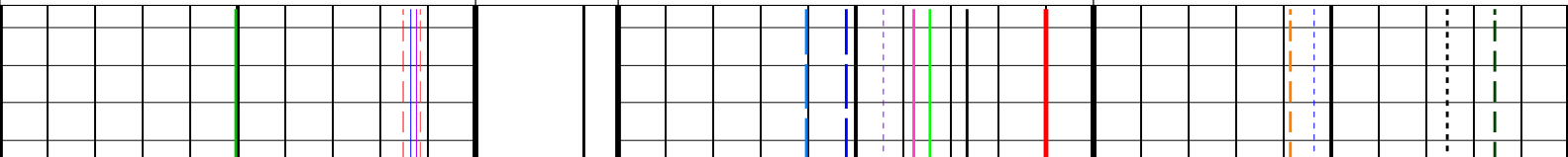
PSPT-A/B

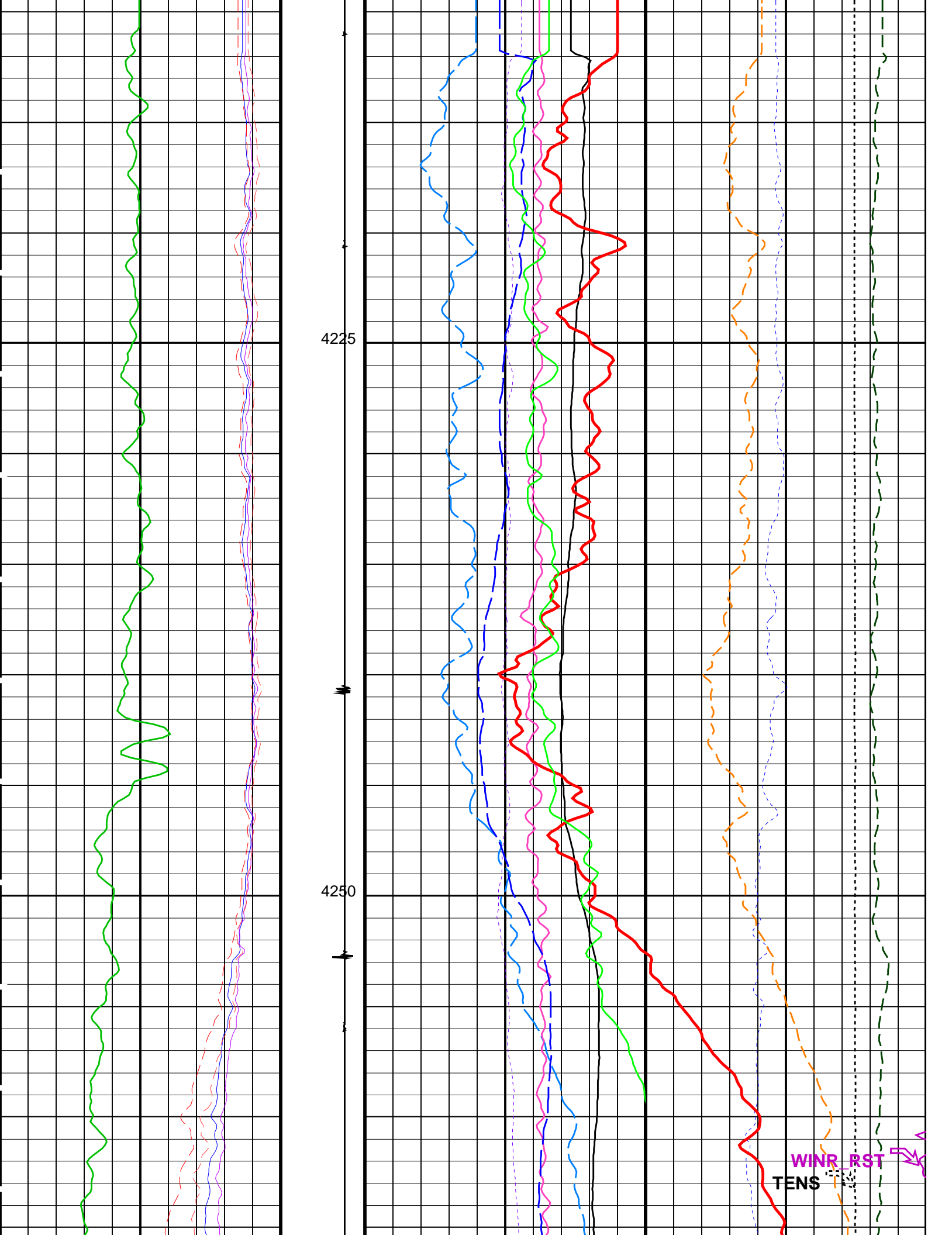
SRPC-3546-Q1\_2008\_OP15

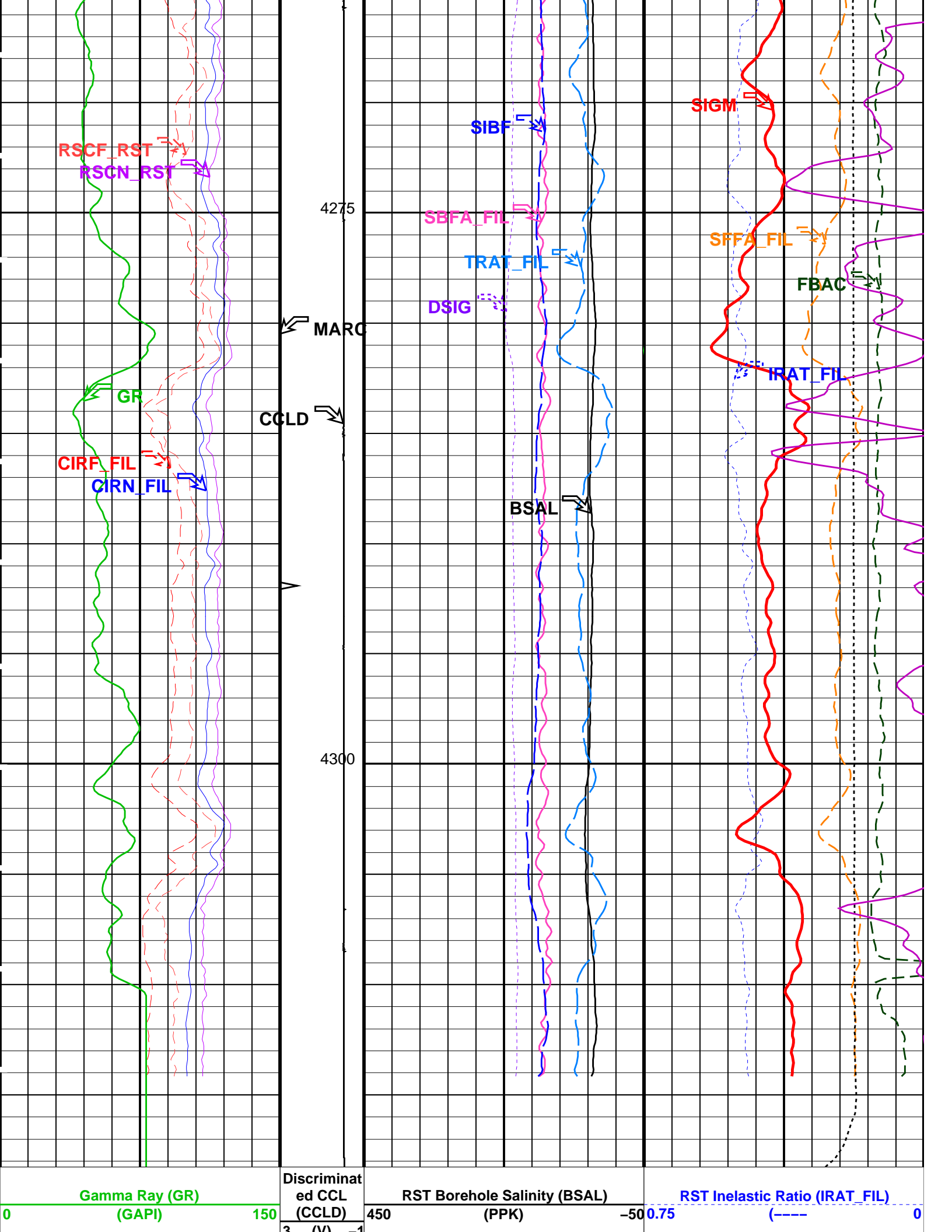
PIP SUMMARY

Time Mark Every 60 S

|                                                |  |  |                                         |  |  |
|------------------------------------------------|--|--|-----------------------------------------|--|--|
|                                                |  |  | RST Sigma (SIGM)                        |  |  |
| 60                                             |  |  | (CU)                                    |  |  |
|                                                |  |  | 0                                       |  |  |
|                                                |  |  | RST Weighted Inelastic Ratio (WINR_RST) |  |  |
| 0.4                                            |  |  | (----                                   |  |  |
|                                                |  |  | 0                                       |  |  |
|                                                |  |  | RST Porosity (TPHI)                     |  |  |
| 0.6                                            |  |  | (V/V)                                   |  |  |
|                                                |  |  | 0                                       |  |  |
| RST Far Effective Capture CR (RSCF_RST)        |  |  | RST Sigma Borehole Fluid (SIBF)         |  |  |
| 45                                             |  |  | 100                                     |  |  |
| (----                                          |  |  | (CU)                                    |  |  |
| 0                                              |  |  | 0                                       |  |  |
| RST Near Effective Capture CR (RSCN_RST)       |  |  | Sigma Borehole Far Apparent (SBFA_FIL)  |  |  |
| 45                                             |  |  | 150                                     |  |  |
| (----                                          |  |  | (CU)                                    |  |  |
| 0                                              |  |  | 0                                       |  |  |
|                                                |  |  | Tension (TENS)                          |  |  |
|                                                |  |  | 0                                       |  |  |
|                                                |  |  | (LBF)                                   |  |  |
|                                                |  |  | 3000                                    |  |  |
| RST Capture to Inelastic Ratio Far (CIRF_FIL)  |  |  | Sigma Formation Far Apparent (SFFA_FIL) |  |  |
| 5                                              |  |  | 1.5                                     |  |  |
| (----                                          |  |  | (-----                                  |  |  |
| 0                                              |  |  | 0.5                                     |  |  |
|                                                |  |  | 60                                      |  |  |
|                                                |  |  | (CU)                                    |  |  |
|                                                |  |  | 0                                       |  |  |
| RST Capture to Inelastic Ratio Near (CIRN_FIL) |  |  | RST Sigma Difference (DSIG)             |  |  |
| 2.5                                            |  |  | -30                                     |  |  |
| (-----                                         |  |  | (CU)                                    |  |  |
| 0                                              |  |  | 30                                      |  |  |
|                                                |  |  | 0                                       |  |  |
|                                                |  |  | MCS Far Background (filtered) (FBAC)    |  |  |
|                                                |  |  | 0                                       |  |  |
|                                                |  |  | (CPS)                                   |  |  |
|                                                |  |  | 5000                                    |  |  |
|                                                |  |  | RST Inelastic Ratio (IRAT_FIL)          |  |  |
| 0                                              |  |  | 0.75                                    |  |  |
| (GAPI)                                         |  |  | (-----                                  |  |  |
| 150                                            |  |  | 0                                       |  |  |







|                                                                                                 |                                                                             |                                                                                          |                                                                                      |
|-------------------------------------------------------------------------------------------------|-----------------------------------------------------------------------------|------------------------------------------------------------------------------------------|--------------------------------------------------------------------------------------|
| <div> <div>RST Capture to Inelastic Ratio Near (CIRN_FIL)</div> <div>2.5 (-----) 0</div> </div> | <div> <div>Minitron Arc Detection (MARC)</div> <div>0 (----- 5</div> </div> | <div> <div>RST Sigma Difference (DSIG)</div> <div>-30 (CU) 30</div> </div>               | <div> <div>MCS Far Background (filtered) (FBAC)</div> <div>0 (CPS) 5000</div> </div> |
| <div> <div>RST Capture to Inelastic Ratio Far (CIRF_FIL)</div> <div>5 (-----) 0</div> </div>    |                                                                             | <div> <div>RST Capture Ratio (TRAT_FIL)</div> <div>1.5 (-----) 0.5</div> </div>          | <div> <div>Sigma Formation Far Apparent (SFFA_FIL)</div> <div>60 (CU) 0</div> </div> |
| <div> <div>RST Near Effective Capture CR (RSCN_RST)</div> <div>45 (-----) 0</div> </div>        |                                                                             | <div> <div>Sigma Borehole Far Apparent (SBFA_FIL)</div> <div>150 (CU) 0</div> </div>     | <div> <div>Tension (TENS)</div> <div>0 (LBF) 3000</div> </div>                       |
| <div> <div>RST Far Effective Capture CR (RSCF_RST)</div> <div>45 (-----) 0</div> </div>         |                                                                             | <div> <div>RST Sigma Borehole Fluid (SIBF)</div> <div>100 (CU) 0</div> </div>            |                                                                                      |
|                                                                                                 |                                                                             | <div> <div>RST Porosity (TPHI)</div> <div>0.6 (V/V) 0</div> </div>                       |                                                                                      |
|                                                                                                 |                                                                             | <div> <div>RST Weighted Inelastic Ratio (WINR_RST)</div> <div>0.4 (-----) 0</div> </div> |                                                                                      |
|                                                                                                 |                                                                             | <div> <div>RST Sigma (SIGM)</div> <div>60 (CU) 0</div> </div>                            |                                                                                      |

### PIP SUMMARY

 Time Mark Every 60 S

## Parameters

| DLIS Name                                      | Description                                     | Value       |      |
|------------------------------------------------|-------------------------------------------------|-------------|------|
| RST-C: Reservoir Saturation Pro Tool C         |                                                 |             |      |
| AIRB                                           | RST Air Borehole                                | No          |      |
| BHS                                            | Borehole Status                                 | CASED       |      |
| BSALOPT                                        | RST Borehole Salinity Option                    | Unknown     |      |
| BSFL                                           | RST Borehole Salinity Filter Length             | 51          |      |
| DFPC                                           | RST Depth Filter Processing Constant            | One         |      |
| DFPC_TDTL                                      | RST Depth Filter Processing Constant (TDT-like) | Two         |      |
| MATR                                           | Rock Matrix for Neutron Porosity Corrections    | SANDSTONE   |      |
| NORM_IRAT_RST                                  | RST Normalized Inelastic Ratio                  | 0.48        |      |
| NORM_SIGM_RST                                  | RST Normalized Sigma                            | 30          | CU   |
| RGAI                                           | Near/Far Gain Calibration Ratio                 | 1           |      |
| TIER_SIGM                                      | RST Sigma Acquisition Mode                      | 0_RST_Sigma |      |
| PSPT-A/B: Production Services Logging Platform |                                                 |             |      |
| BHS                                            | Borehole Status                                 | CASED       |      |
| MATR                                           | Rock Matrix for Neutron Porosity Corrections    | SANDSTONE   |      |
| System and Miscellaneous                       |                                                 |             |      |
| BS                                             | Bit Size                                        | 8.500       | IN   |
| BSAL                                           | Borehole Salinity                               | -50000.00   | PPM  |
| CSIZ                                           | Current Casing Size                             | 4.500       | IN   |
| CWEI                                           | Casing Weight                                   | 37.60       | LB/F |
| DO                                             | Depth Offset for Playback                       | -0.4        | M    |
| PP                                             | Playback Processing                             | NORMAL      |      |

Format: RST\_SIG\_ANSW    Vertical Scale: 1:200    Graphics File Created: 01-May-2008 14:41

## OP System Version: 15C0-309

MCM

RST-C      SRPC-3546-Q1\_2008\_OP15      PSPT-A/B      SRPC-3546-Q1\_2008\_OP15

## Input DLIS Files

|         |                |       |          |                   |          |          |
|---------|----------------|-------|----------|-------------------|----------|----------|
| DEFAULT | RST_PSP_022LUP | FN:21 | PRODUCER | 01-May-2008 13:21 | 4318.7 M | 4210.8 M |
|---------|----------------|-------|----------|-------------------|----------|----------|

## Output DLIS Files

|         |                |       |          |                   |
|---------|----------------|-------|----------|-------------------|
| DEFAULT | RST_PSP_025PUP | FN:24 | PRODUCER | 01-May-2008 14:41 |
|---------|----------------|-------|----------|-------------------|



RST-C Sigma

Pass # 1 900 ft/hr

MAXIS Field Log

Company: Esso Australia Pty Ltd.

Well: A-26

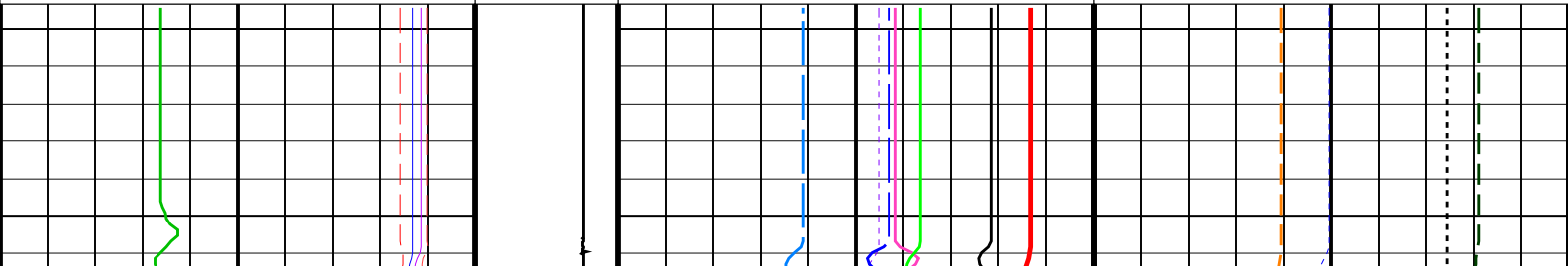
| Input DLIS Files  |                |       |          |                   |          |          |
|-------------------|----------------|-------|----------|-------------------|----------|----------|
| DEFAULT           | RST_PSP_021LUP | FN:20 | PRODUCER | 01-May-2008 12:44 | 4324.5 M | 4209.6 M |
| Output DLIS Files |                |       |          |                   |          |          |
| DEFAULT           | RST_PSP_027PUP | FN:26 | PRODUCER | 01-May-2008 14:44 | 4324.2 M | 4204.3 M |

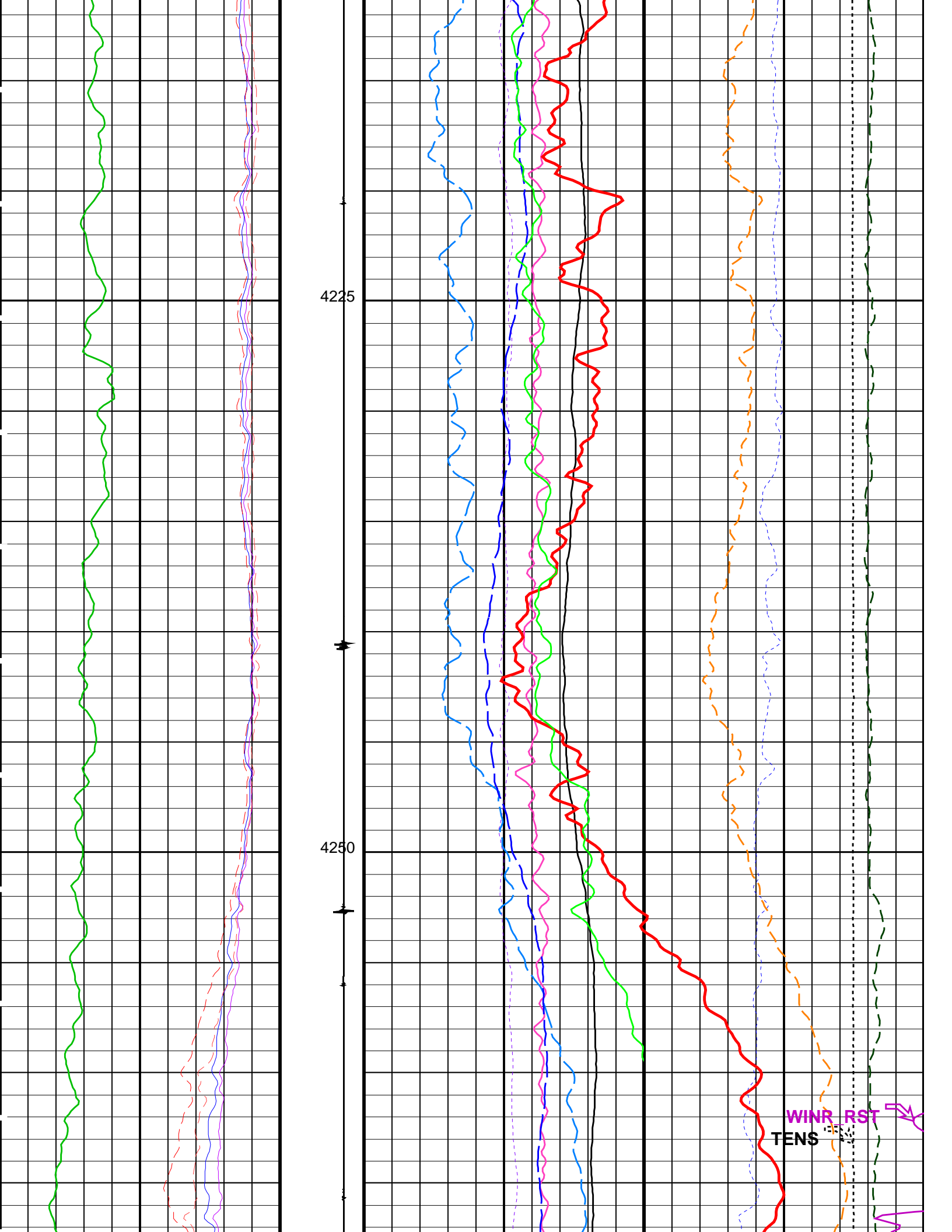
| OP System Version: 15C0-309 |                        |          |                        |
|-----------------------------|------------------------|----------|------------------------|
| MCM                         |                        |          |                        |
| RST-C                       | SRPC-3546-Q1_2008_OP15 | PSPT-A/B | SRPC-3546-Q1_2008_OP15 |

PIP SUMMARY

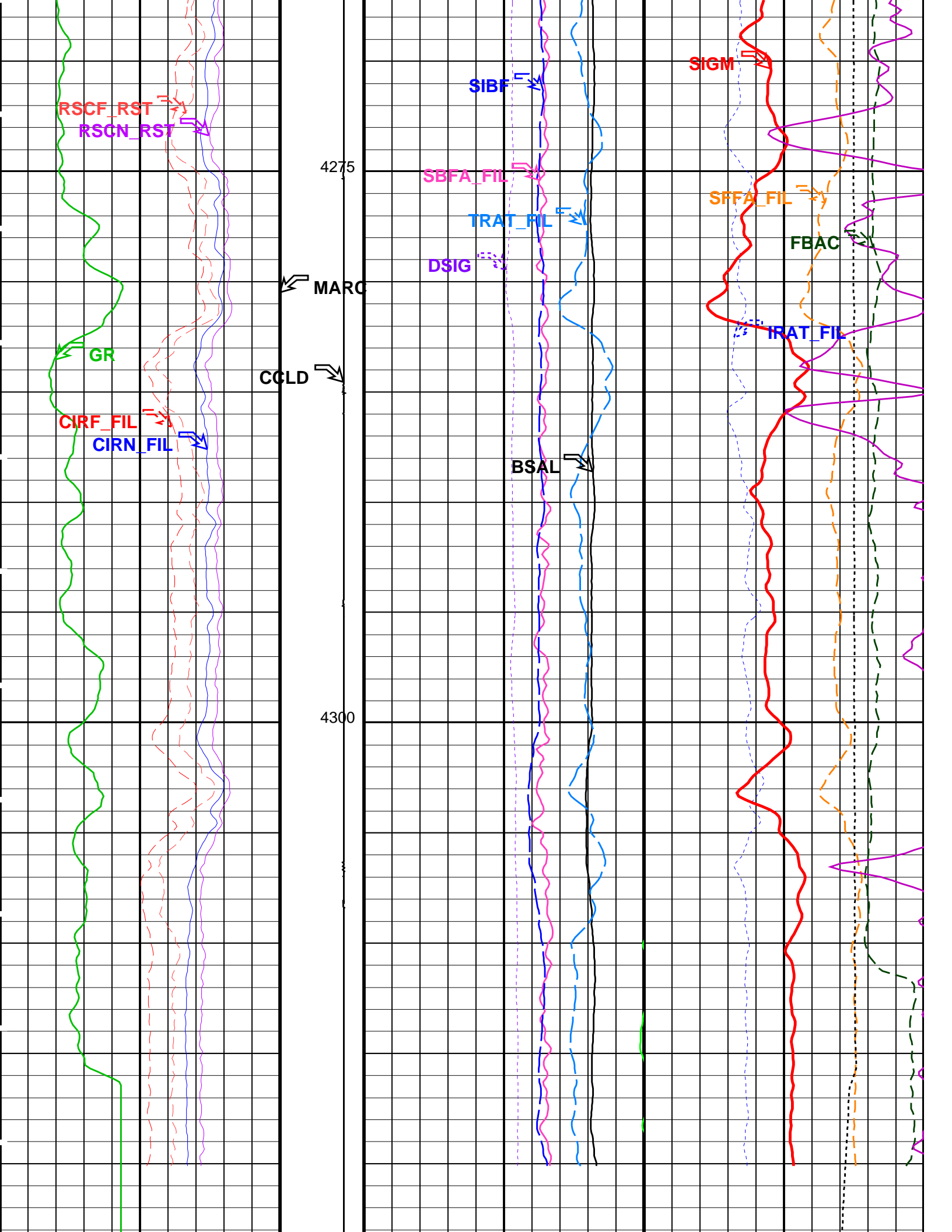
Time Mark Every 60 S

|                                                |     |                                         |                                         |
|------------------------------------------------|-----|-----------------------------------------|-----------------------------------------|
|                                                |     | RST Sigma (SIGM)                        |                                         |
|                                                |     | 60 (CU)                                 | 0                                       |
|                                                |     | RST Weighted Inelastic Ratio (WINR_RST) |                                         |
|                                                |     | 0.4 (----                               | 0                                       |
|                                                |     | RST Porosity (TPHI)                     |                                         |
|                                                |     | 0.6 (V/V)                               | 0                                       |
| RST Far Effective Capture CR (RSCF_RST)        |     | RST Sigma Borehole Fluid (SIBF)         |                                         |
| 45 (----                                       | 0   | 100 (CU)                                | 0                                       |
| RST Near Effective Capture CR (RSCN_RST)       |     | Sigma Borehole Far Apparent (SBFA_FIL)  |                                         |
| 45 (----                                       | 0   | 150 (CU)                                | 0                                       |
|                                                |     | Tension (TENS)                          |                                         |
|                                                |     | 0 (LBF) 3000                            |                                         |
| RST Capture to Inelastic Ratio Far (CIRF_FIL)  |     | RST Capture Ratio (TRAT_FIL)            | Sigma Formation Far Apparent (SFFA_FIL) |
| 5 (----                                        | 0   | 1.5 (----                               | 0.5 60 (CU)                             |
| RST Capture to Inelastic Ratio Near (CIRN_FIL) |     | RST Sigma Difference (DSIG)             | MCS Far Background (filtered) (FBAC)    |
| 2.5 (----                                      | 0   | -30 (CU)                                | 30 0 (CPS) 5000                         |
|                                                |     |                                         |                                         |
| Gamma Ray (GR)                                 |     | RST Borehole Salinity (BSAL)            | RST Inelastic Ratio (IRAT_FIL)          |
| 0 (GAPI)                                       | 150 | 450 (PPK)                               | -50 0.75 (----                          |
|                                                |     |                                         |                                         |









|                                                   |  |  |                                                     |                                         |  |  |                                                    |  |  |
|---------------------------------------------------|--|--|-----------------------------------------------------|-----------------------------------------|--|--|----------------------------------------------------|--|--|
|                                                   |  |  | Discriminat<br>ed CCL<br>(CCLD)<br>3 (V) -1         | RST Borehole Salinity (BSAL)            |  |  | RST Inelastic Ratio (IRAT_FIL)                     |  |  |
| Gamma Ray (GR)<br>(GAPI)                          |  |  |                                                     | 450 (PPK) -50                           |  |  | 0.75 (----) 0                                      |  |  |
| 0 150                                             |  |  | Minitron<br>Arc<br>Detection<br>(MARC)<br>0 (---- 5 | RST Sigma Difference (DSIG)<br>(CU)     |  |  | MCS Far Background (filtered) (FBAC)<br>(CPS) 5000 |  |  |
| RST Capture to Inelastic Ratio Near<br>(CIRN_FIL) |  |  |                                                     | -30 30                                  |  |  | 0                                                  |  |  |
| 2.5 0                                             |  |  |                                                     | RST Capture Ratio (TRAT_FIL)            |  |  | Sigma Formation Far Apparent (SFFA_FIL)            |  |  |
| RST Capture to Inelastic Ratio Far<br>(CIRF_FIL)  |  |  |                                                     | 1.5 (----) 0.5                          |  |  | 60 (CU) 0                                          |  |  |
| 5 0                                               |  |  |                                                     | Sigma Borehole Far Apparent (SBFA_FIL)  |  |  | Tension (TENS)<br>0 (LBF) 3000                     |  |  |
| RST Near Effective Capture CR (RSCN_RST)          |  |  |                                                     | 150 (CU) 0                              |  |  |                                                    |  |  |
| 45 0                                              |  |  |                                                     | RST Sigma Borehole Fluid (SIBF)         |  |  |                                                    |  |  |
| RST Far Effective Capture CR (RSCF_RST)           |  |  |                                                     | 100 (CU) 0                              |  |  |                                                    |  |  |
| 45 0                                              |  |  |                                                     | RST Porosity (TPHI)                     |  |  |                                                    |  |  |
|                                                   |  |  |                                                     | 0.6 (V/V) 0                             |  |  |                                                    |  |  |
|                                                   |  |  |                                                     | RST Weighted Inelastic Ratio (WINR_RST) |  |  |                                                    |  |  |
|                                                   |  |  | 0.4 (----) 0                                        |                                         |  |  |                                                    |  |  |
|                                                   |  |  | RST Sigma (SIGM)                                    |                                         |  |  |                                                    |  |  |
|                                                   |  |  | 60 (CU) 0                                           |                                         |  |  |                                                    |  |  |

|                      |  |  |  |  |  |  |  |  |  |
|----------------------|--|--|--|--|--|--|--|--|--|
| PIP SUMMARY          |  |  |  |  |  |  |  |  |  |
| Time Mark Every 60 S |  |  |  |  |  |  |  |  |  |

| Parameters                                     |                                                 |             |      |
|------------------------------------------------|-------------------------------------------------|-------------|------|
| DLIS Name                                      | Description                                     | Value       |      |
| RST-C: Reservoir Saturation Pro Tool C         |                                                 |             |      |
| AIRB                                           | RST Air Borehole                                | No          |      |
| BHS                                            | Borehole Status                                 | CASED       |      |
| BSALOPT                                        | RST Borehole Salinity Option                    | Unknown     |      |
| BSFL                                           | RST Borehole Salinity Filter Length             | 51          |      |
| DFPC                                           | RST Depth Filter Processing Constant            | One         |      |
| DFPC_TDTL                                      | RST Depth Filter Processing Constant (TDT-like) | Two         |      |
| MATR                                           | Rock Matrix for Neutron Porosity Corrections    | SANDSTONE   |      |
| NORM_IRAT_RST                                  | RST Normalized Inelastic Ratio                  | 0.48        |      |
| NORM_SIGM_RST                                  | RST Normalized Sigma                            | 30          | CU   |
| RGAI                                           | Near/Far Gain Calibration Ratio                 | 1           |      |
| TIER_SIGM                                      | RST Sigma Acquisition Mode                      | 0_RST_Sigma |      |
| PSPT-A/B: Production Services Logging Platform |                                                 |             |      |
| BHS                                            | Borehole Status                                 | CASED       |      |
| MATR                                           | Rock Matrix for Neutron Porosity Corrections    | SANDSTONE   |      |
| System and Miscellaneous                       |                                                 |             |      |
| BS                                             | Bit Size                                        | 8.500       | IN   |
| BSAL                                           | Borehole Salinity                               | -50000.00   | PPM  |
| CSIZ                                           | Current Casing Size                             | 4.500       | IN   |
| CWEI                                           | Casing Weight                                   | 37.60       | LB/F |
| DO                                             | Depth Offset for Playback                       | -0.3        | M    |
| PP                                             | Playback Processing                             | NORMAL      |      |

|                      |                       |                                          |
|----------------------|-----------------------|------------------------------------------|
| Format: RST_SIG_ANSW | Vertical Scale: 1:200 | Graphics File Created: 01-May-2008 14:44 |
|----------------------|-----------------------|------------------------------------------|

|                             |                        |          |                        |
|-----------------------------|------------------------|----------|------------------------|
| OP System Version: 15C0-309 |                        |          |                        |
| MCM                         |                        |          |                        |
| RST-C                       | SRPC-3546-Q1_2008_OP15 | PSPT-A/B | SRPC-3546-Q1_2008_OP15 |

| Input DLIS Files |                |       |          |                   |                   |
|------------------|----------------|-------|----------|-------------------|-------------------|
| DEFAULT          | RST_PSP_021LUP | FN:20 | PRODUCER | 01-May-2008 12:44 | 4324.5 M 4209.6 M |

# Output DLIS Files

DEFAULT

RST\_PSP\_027PUP

FN:26

PRODUCER

01-May-2008 14:44

Schlumberger

RST-C Sigma GR Pass

MAXIS Field Log

Company: Esso Australia Pty Ltd.

Well: A-26

## Input DLIS Files

DEFAULT

RST\_PSP\_019LUP

FN:18

PRODUCER

01-May-2008 12:16

4327.4 M

4210.8 M

## Output DLIS Files

DEFAULT

RST\_PSP\_020PUP

FN:19

PRODUCER

01-May-2008 12:34

4325.3 M

4203.6 M

## OP System Version: 15C0-309

MCM

RST-C

SRPC-3546-Q1\_2008\_OP15

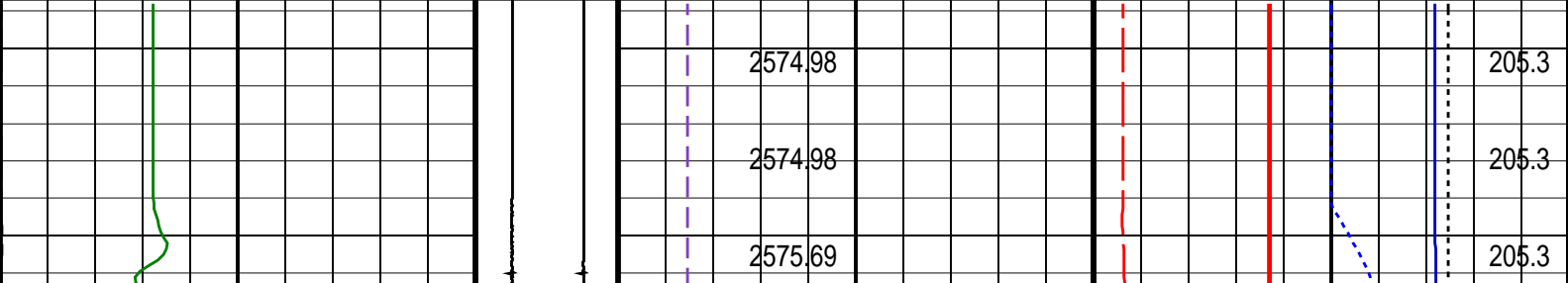
PSPT-A/B

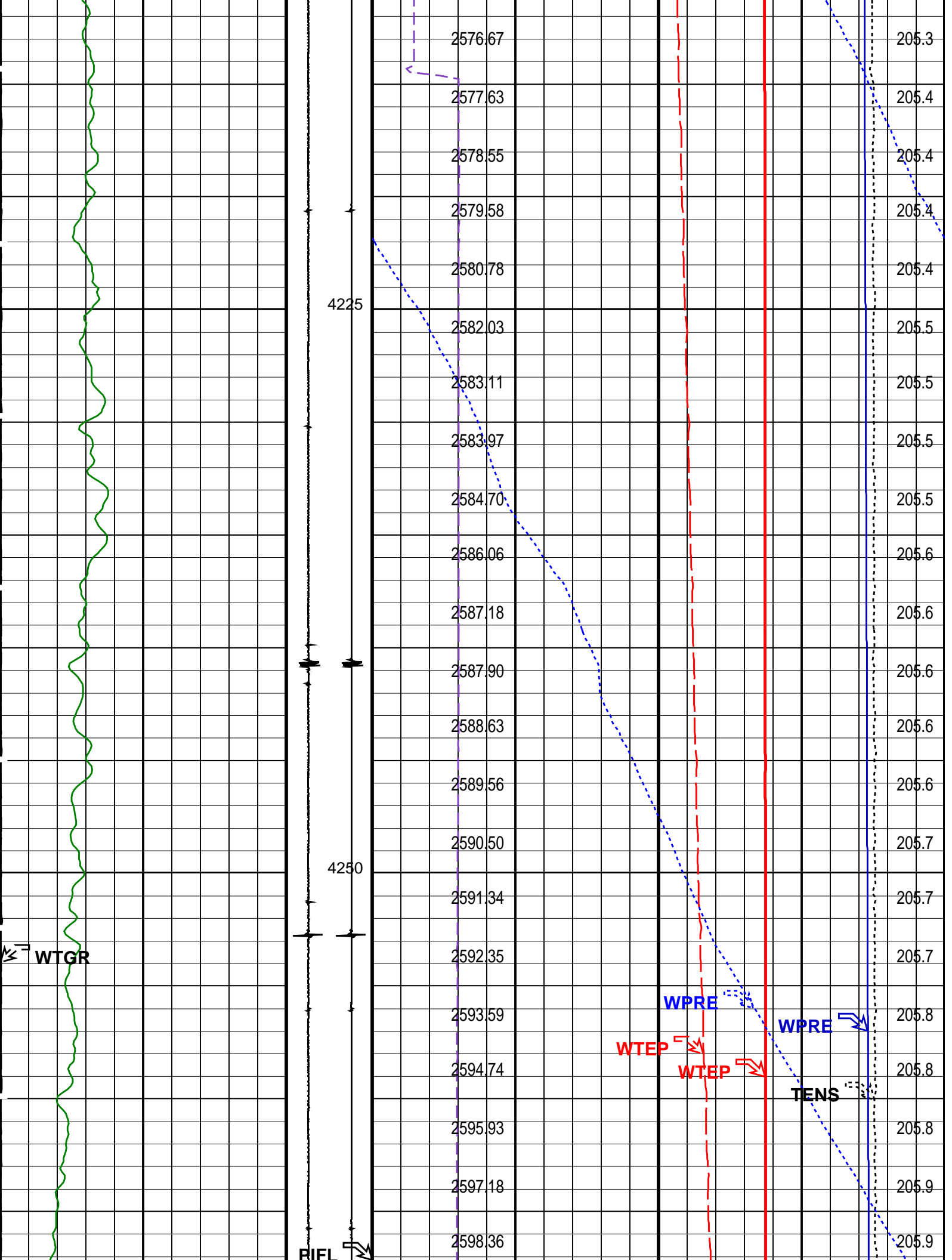
SRPC-3546-Q1\_2008\_OP15

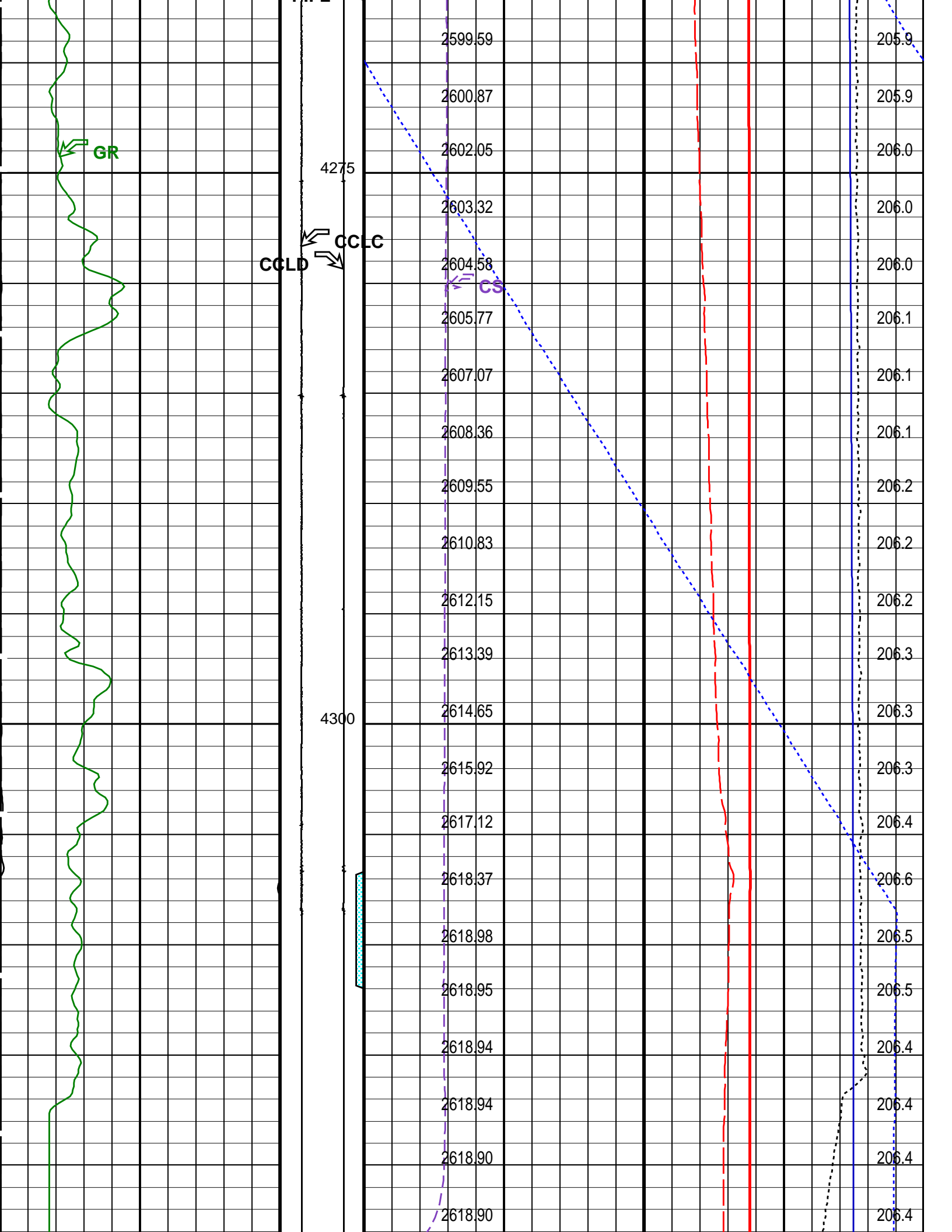
## PIP SUMMARY

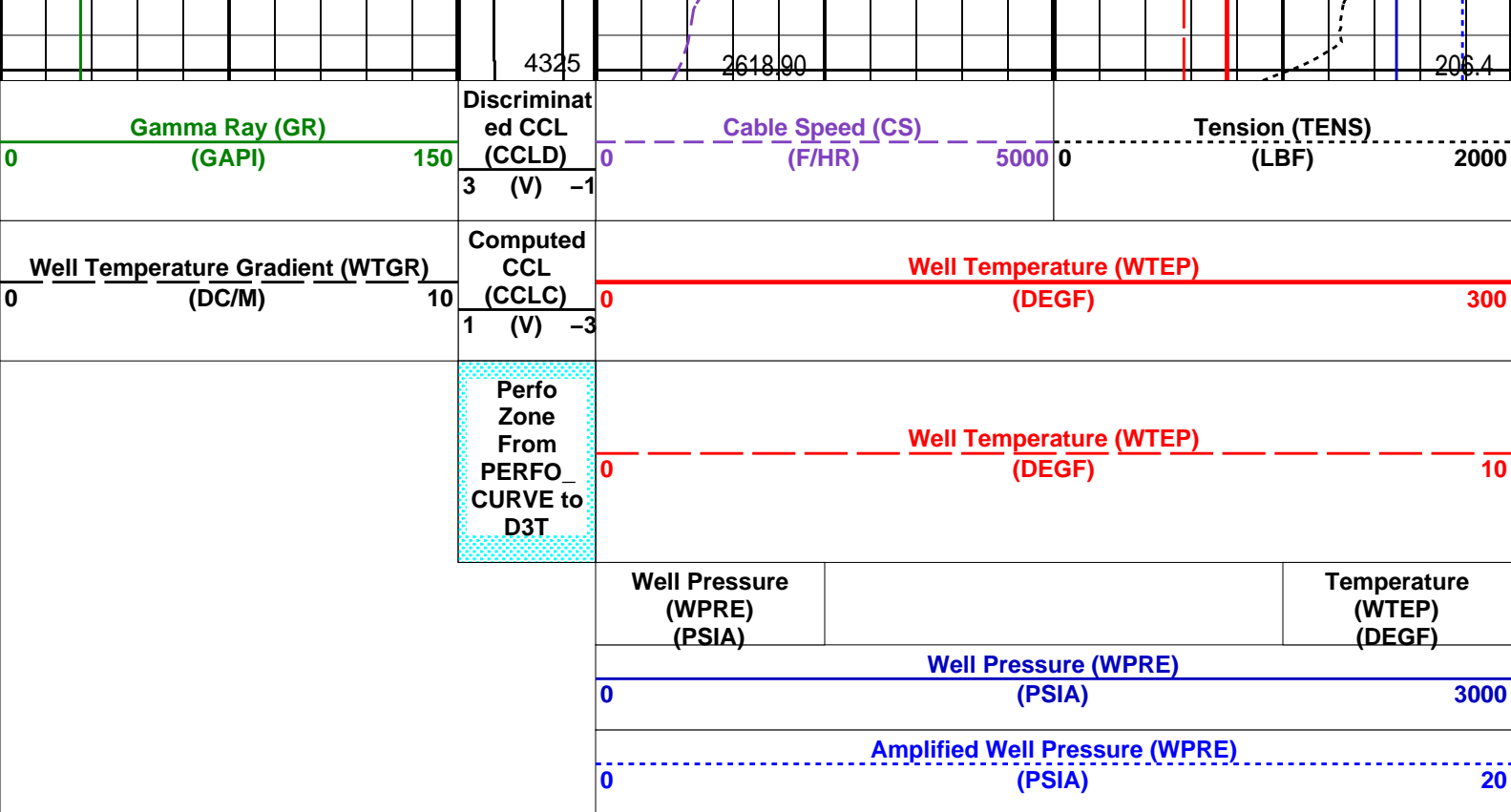
Time Mark Every 60 S

|  |  |                                          |  |                              |      |
|--|--|------------------------------------------|--|------------------------------|------|
|  |  | Amplified Well Pressure (WPRE)<br>(PSIA) |  | 0                            | 20   |
|  |  | Well Pressure (WPRE)<br>(PSIA)           |  | 0                            | 3000 |
|  |  | Well Pressure (WPRE)<br>(PSIA)           |  | Temperature (WTEP)<br>(DEGF) |      |
|  |  | Well Temperature (WTEP)<br>(DEGF)        |  | 0                            | 10   |
|  |  | Well Temperature (WTEP)<br>(DEGF)        |  | 0                            | 300  |
|  |  | Cable Speed (CS)<br>(F/HR)               |  | 0                            | 5000 |
|  |  | Tension (TENS)<br>(LBF)                  |  | 0                            | 2000 |









|                             |                        |                           |          |                                          |                        |          |
|-----------------------------|------------------------|---------------------------|----------|------------------------------------------|------------------------|----------|
| PIP SUMMARY                 |                        |                           |          |                                          |                        |          |
| Time Mark Every 60 S        |                        |                           |          |                                          |                        |          |
| Format: PSP_1               |                        | Vertical Scale: 1:200     |          | Graphics File Created: 01-May-2008 12:34 |                        |          |
| OP System Version: 15C0-309 |                        |                           |          |                                          |                        |          |
| MCM                         |                        |                           |          |                                          |                        |          |
| RST-C                       | SRPC-3546-Q1_2008_OP15 |                           | PSPT-A/B |                                          | SRPC-3546-Q1_2008_OP15 |          |
| Parameters                  |                        |                           |          |                                          |                        |          |
| DLIS Name                   |                        | Description               |          | Value                                    |                        |          |
| System and Miscellaneous    |                        |                           |          |                                          |                        |          |
| DO                          |                        | Depth Offset for Playback |          | -2.2                                     |                        | M        |
| PP                          |                        | Playback Processing       |          | NORMAL                                   |                        |          |
| Input DLIS Files            |                        |                           |          |                                          |                        |          |
| DEFAULT                     | RST_PSP_019LUP         | FN:18                     | PRODUCER | 01-May-2008 12:16                        | 4327.4 M               | 4210.8 M |
| Output DLIS Files           |                        |                           |          |                                          |                        |          |
| DEFAULT                     | RST_PSP_020PUP         | FN:19                     | PRODUCER | 01-May-2008 12:34                        |                        |          |

|          |                         |              |
|----------|-------------------------|--------------|
| Company: | Esso Australia Pty Ltd. | Schlumberger |
| Well:    | A-26                    |              |
| Field:   | Bream A                 |              |
| Rig :    | Prod4 / Crane           |              |
| Country: | Australia               |              |
|          | RST-C                   |              |
|          | Sigma                   |              |
|          | Survey                  |              |