

Company: Esso Australia Pty Ltd.

Well: A-7a
Field: Hailbut
Rig: Crane

Country: Australia

7" Posiset Plug
Setting Record

Rig: Crane
Field: Halibut
Location: Gippsland
Well: A-7a
Company: Esso Australia Pty Ltd.

LOCATION	
Gippsland	Elev.: K.B. 29.45 m
Basin	G.L. -73 m
Bass Strait	D.F. 29.45 m
Permanent Datum:	M.S.L. _____
Log Measured From:	K.B. _____ 29.5 m above Perm. Datum
Drilling Measured From:	K.B. _____
State: Victoria	Max. Well Deviation 43 deg
	Longitude 148°19' 07.62"E
	Latitude 38° 24' 20.36"S

Logging Date	19-Jan-2008
Run Number	1 through 5
Depth Driller	3034 m
Schlumberger Depth	2905 m
Bottom Log Interval	2830 m
Top Log Interval	2827.4 m
Casing Fluid Type	Production Fluids
Salinity	
Density	
Fluid Level	402 m
BIT/CASING/TUBING STRING	
Bit Size	8.500 in
From	515 m
To	3038 m
Casing/Tubing Size	7.000 in
Weight	26 lbm/ft
Grade	L-80
From	12.3 m
To	3034 m
Maximum Recorded Temperatures	224 degF
Logger On Bottom	19-Jan-2008
Unit Number	889
Recorded By	S Gilbert, R Sani
Witnessed By	G Rimmer

			Run 1
Oil Density			
Water Salinity			
Gas Gravity			
Bo			
Bw			
1/Bg			
Bubble Point Pressure			
Bubble Point Temperature			
Solution GOR			
Maximum Deviation			43 deg
CEMENTING DATA			
Primary/Squeeze			Primary
Casing String No			
Lead Cement Type			
Volume			
Density			
Water Loss			
Additives			
Tail Cement Type			
Volume			
Density			
Water Loss			
Additives			
Expected Cement Top			
Logging Date			
Run Number			
Depth Driller			
Schlumberger Depth			
Bottom Log Interval			
Top Log Interval			
Casing Fluid Type			
Salinity			
Density			
Fluid Level			
BIT/CASING/TUBING STRING			
Bit Size			
From			
To			
Casing/Tubing Size			
Weight			
Grade			
From			
To			
Maximum Recorded Temperatures			
Logger On Bottom			
Unit Number			
Recorded By			
Witnessed By			

DEPTH SUMMARY LISTING

Date Created: 15-JAN-2008 13:25:00

Depth System Equipment

Depth Measuring Device		Tension Device		Logging Cable	
Type:	IDW-EB	Type:	PSDS/OSDS	Type:	2-32ZT
Serial Number:	6373	Serial Number:	325357	Serial Number:	24425
Calibration Date:	04-Jan-2007	Calibration Date:	15-Jan-2008	Length:	5299.86 M
Calibrator Serial Number:	9	Calibrator Serial Number:	1174	Conveyance Method: Wireline Rig Type: Rigless	
Calibration Cable Type:	2-32ZT	Calibration Gain:	0.91		
Wheel Correction 1:	-2	Calibration Offset:	220.00		
Wheel Correction 2:	-4				

Depth Control Parameters

Log Sequence:	Subsequent Trip To the Well
Reference Log Name:	ExxonMobil Petrophysical Analysis

Depth Control Remarks

1. IDW used as primary depth control.
2. Z-chart used as back up.
3.
4.
5.
6.

DISCLAIMER

THE USE OF AND RELIANCE UPON THIS RECORDED-DATA BY THE HEREIN NAMED COMPANY (AND ANY OF ITS AFFILIATES, PARTNERS, REPRESENTATIVES, AGENTS, CONSULTANTS AND EMPLOYEES) IS SUBJECT TO THE TERMS AND CONDITIONS AGREED UPON BETWEEN SCHLUMBERGER AND THE COMPANY, INCLUDING: (a) RESTRICTIONS ON USE OF THE RECORDED-DATA; (b) DISCLAIMERS AND WAIVERS OF WARRANTIES AND REPRESENTATIONS REGARDING COMPANY'S USE OF AND RELIANCE UPON THE RECORDED-DATA; AND (c) CUSTOMER'S FULL AND SOLE RESPONSIBILITY FOR ANY INFERENCE DRAWN OR DECISION MADE IN CONNECTION WITH THE USE OF THIS RECORDED-DATA.

OTHER SERVICES1
OS1: RST-C Sigma Survey
OS2: 2-1/8" Powerjet
OS3: Perforation record
OS4:
OS5:
REMARKS: RUN NUMBER 1
Log correlated to ExxonMobil Solar Composite log supplied with logging program.
Maximum well deviation = 43 deg at 1557m MDKB.
Objective: RIH with dummy MPBT to ensure access through minimum restrictions.
Set 7", 26 lb/ft posiset plug with top of seal @ 2827.4m MDKB then dump approximately 1m of cement on top.
7" Posiset Plug @ 2827.4m MDKB.
SBHT: 223.6 degf SBHP: 3105 psia @ 2825m MDKB

HUD not Tagged .
Top of seal @ 2827.4m MDKB.
CCL to top of seal = 7m
CCL Stop depth = 2820.4m MDKB
Dump Bailers:
CCL to bottom of bailer = 11m
2 cement Runs were made with 1 11/16" - 32ft long Dump Bailers .

RUN 1 SERVICE ORDER #: AUSL08589243 PROGRAM VERSION: 15C0-309 FLUID LEVEL: 402 m					
LOGGED INTERVAL	START	STOP	LOGGED INTERVAL	START	STOP

[illegible]

<p>WITM-A PSC_16MHZ 827</p>	<p>MPBM-BA 81</p>
---------------------------------	-------------------

DOWNHOLE EQUIPMENT			DOWNHOLE EQUIPMENT		
SWBS 785		9.47	SWBS 785		11.50
SWBS 786		8.79	SWBS 786		10.82
SWBS 787		8.10	SWBS 787		10.13
SWHS-A 759		7.42	SWHS-A 759		9.45
PSPT-B	Detail MT	7.09	CCL-L 9851	CCL	9.12
PSC-A 827	TelStatus		CCL-L 9851	Cable Cur	
PSPT-B 827	CTEM			Head Volt	
PSTC 806				Tension	
PBMS-B 827			MPSU-CA		8.66
CQG_F_Mano 827			MPSU-CA 1102		
RTD Thermometer 827					
GR 33143	GR	5.96			
CCL					
PBMS 827					
	Well_Temp	5.03			
	CQG Manom	4.92			
	CCL	4.80			
	PBMS PSTC	4.57			
AH-124 7002		4.57			
EQF-43		4.53			
EQF-43					

AH-2-1/8" Dummy plug
AH-2-1/8" Dummy plug

2.70

Tension HV 0.00
TOOL ZERO

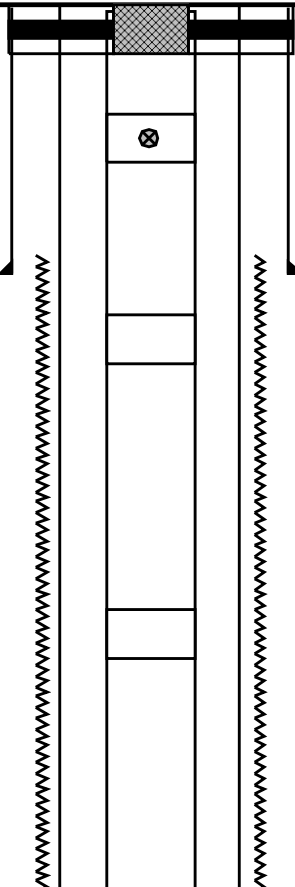
MAXIMUM STRING DIAMETER 2.13 IN
MEASUREMENTS RELATIVE TO TOOL ZERO
ALL LENGTHS IN METERS

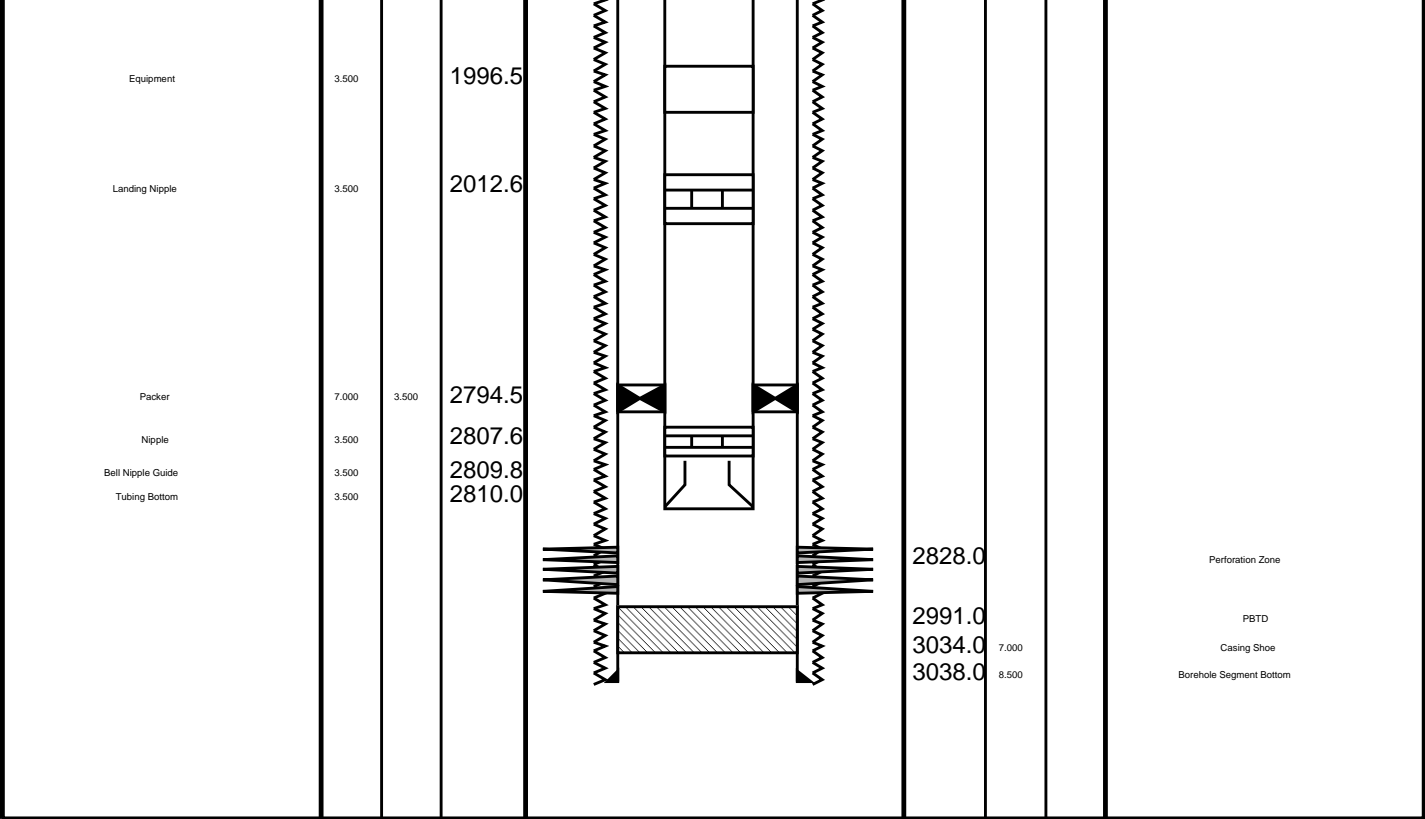
MPEX-BA
MPEX-BA

2.26

TOOL BOTTOM

MAXIMUM STRING DIAMETER 2.13 IN
MEASUREMENTS RELATIVE TO TOOL ZERO
ALL LENGTHS IN METERS

Production String	(in)		(m)	Well Schematic	(m)	(in)		Casing String
	OD	ID	MD		MD	OD	ID	
Tubing Tubing Hanger	3.500 11.000	2.992	12.3 12.3		0.0 -1.3	10.750 7.000		Casing String Casing String
Shut-in Valve	3.500		143.7					
Equipment	3.500		742.9		552.2 515.0	10.750 8.500		Casing Shoe Borehole Segment
Equipment	3.500		1350.7					



Job Events Summary

MAXIS Field Log

Schlumberger Job Event Summary

	Time	Elapsed Time	Depth (M)	File
Log Pass (up)	19-Jan-2008 15:05	000:13	2908.4 – 2736.3	PSP_046LUP
Log Pass (up)	20-Jan-2008 7:54	000:06	2850.6 – 2804.0	MPBT_071LUP
Log Pass (up)	20-Jan-2008 8:10	000:27	12192.0 – 11790.7	MPBT_072LUP
Log Pass (up)	20-Jan-2008 8:37	000:08	2820.0 – 2770.0	MPBT_073LUP
Log Pass (up)	20-Jan-2008 10:40	000:08	2818.8 – 2770.0	PERFO_079LUP
Log Pass (up)	20-Jan-2008 12:09	000:15	2818.2 – 2766.7	PERFO_082LUP
Log Pass (up)	20-Jan-2008 13:49	000:09	2815.9 – 2774.6	PERFO_085LUP

Output DLIS Files

DEFAULT PERFO_085LUP FN:83 PRODUCER 20-Jan-2008 13:49 2815.9 M 2774.6 M

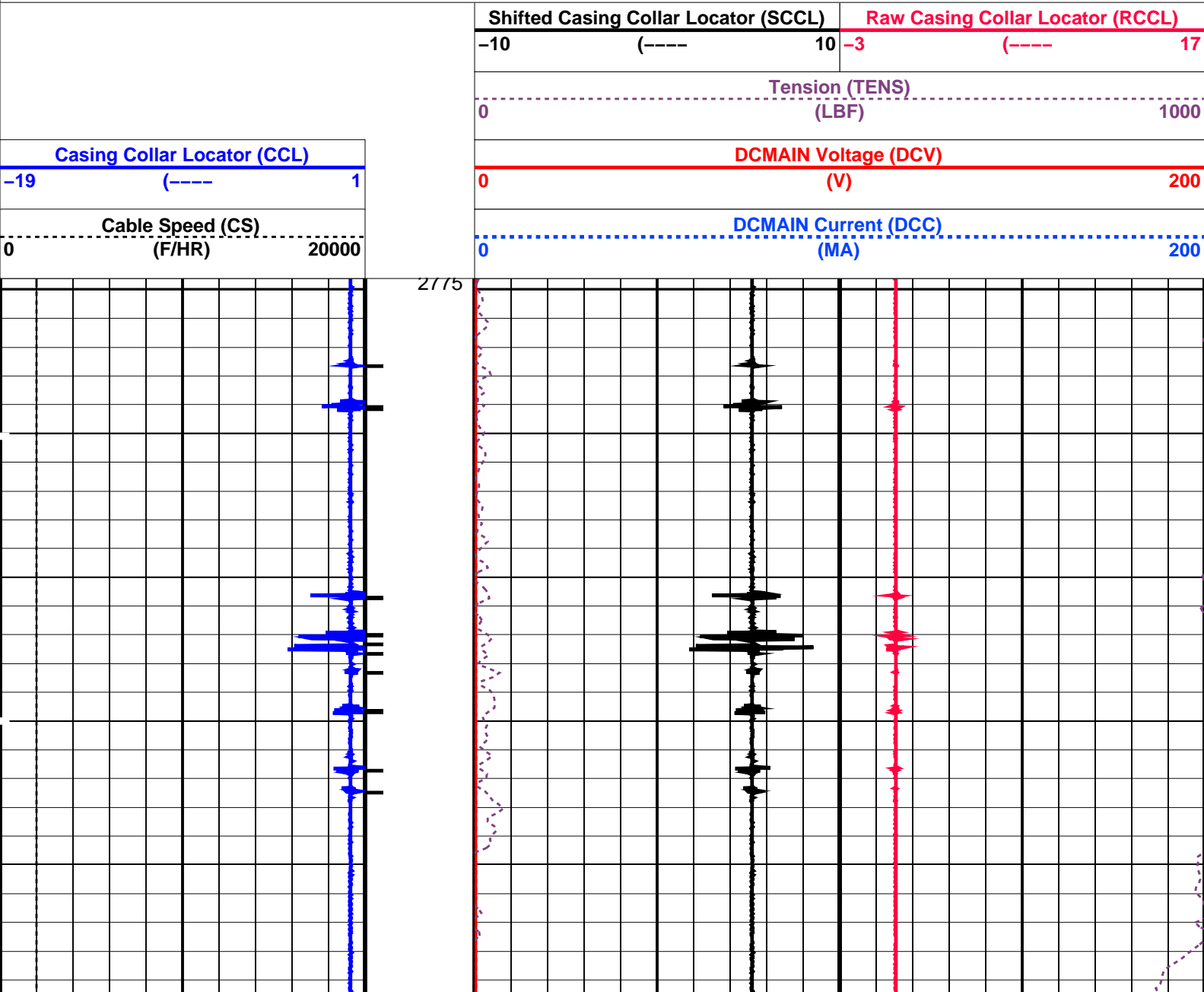
OP System Version: 15C0-309
MCM

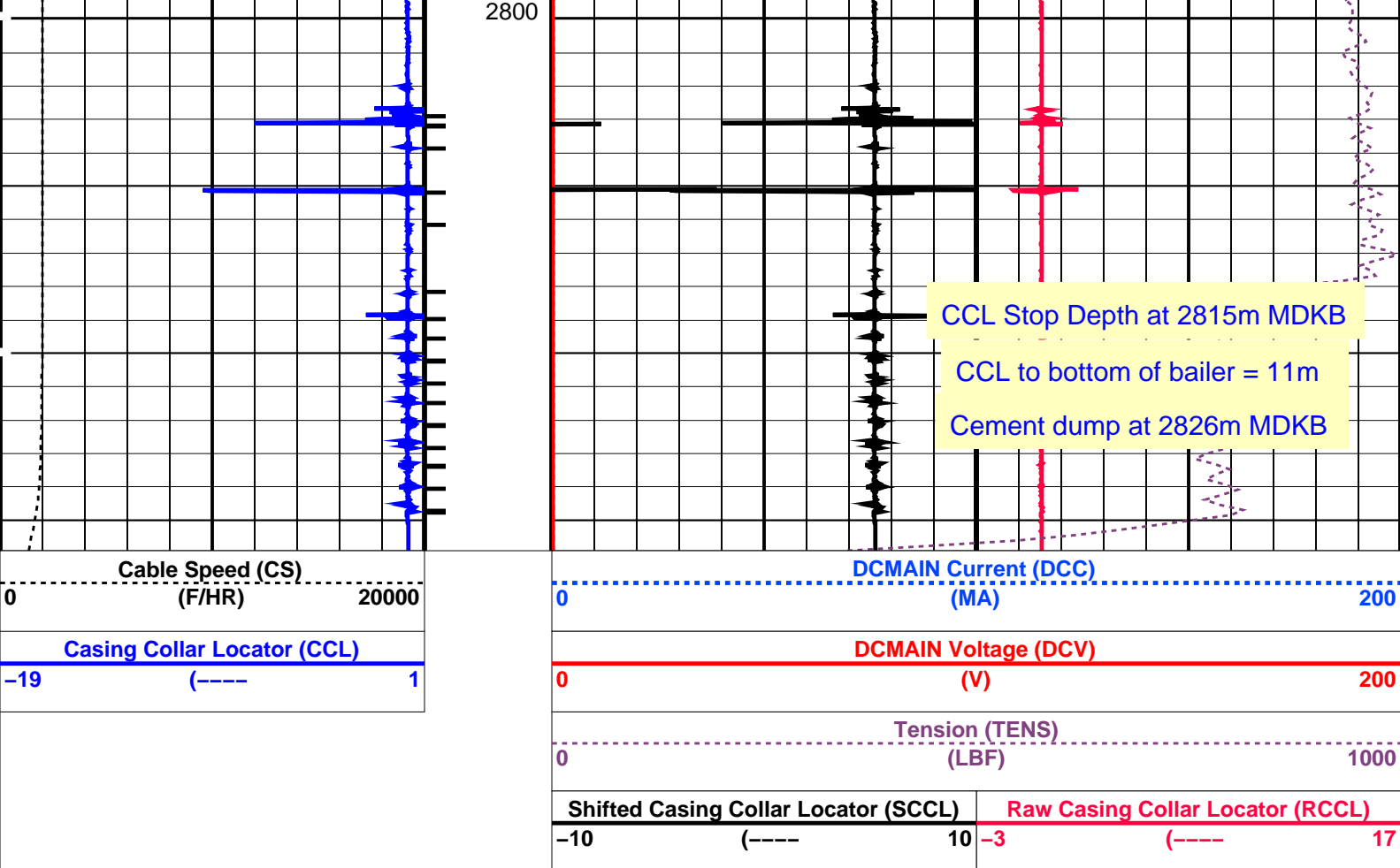
SHM_GUN SRPC-3474-Q4_2007 CCL-L 15C0-309

PIP SUMMARY

Casing Collars

Time Mark Every 60 S





PIP SUMMARY

Time Mark Every 60 S

Casing Collars

Parameters		
DLIS Name	Description	Value
CCLD	CCL-L: Casing Collar Locator	12 IN
CCLT	CCL reset delay	0.3 V
CCLT	CCL Detection Level	

Format: PERFO Vertical Scale: 1:200 Graphics File Created: 20-Jan-2008 13:49

OP System Version: 15C0-309
MCM

SHM_GUN SRPC-3474-Q4_2007 CCL-L 15C0-309

Output DLIS Files			
DEFAULT	PERFO_085LUP	FN:83 PRODUCER	20-Jan-2008 13:49

Cement Dump Pass #1

MAXIS Field Log

Output DLIS Files

DEFAULT PERFO_082LUP FN:80 PRODUCER 20-Jan-2008 12:09 2818.2 M 2766.7 M

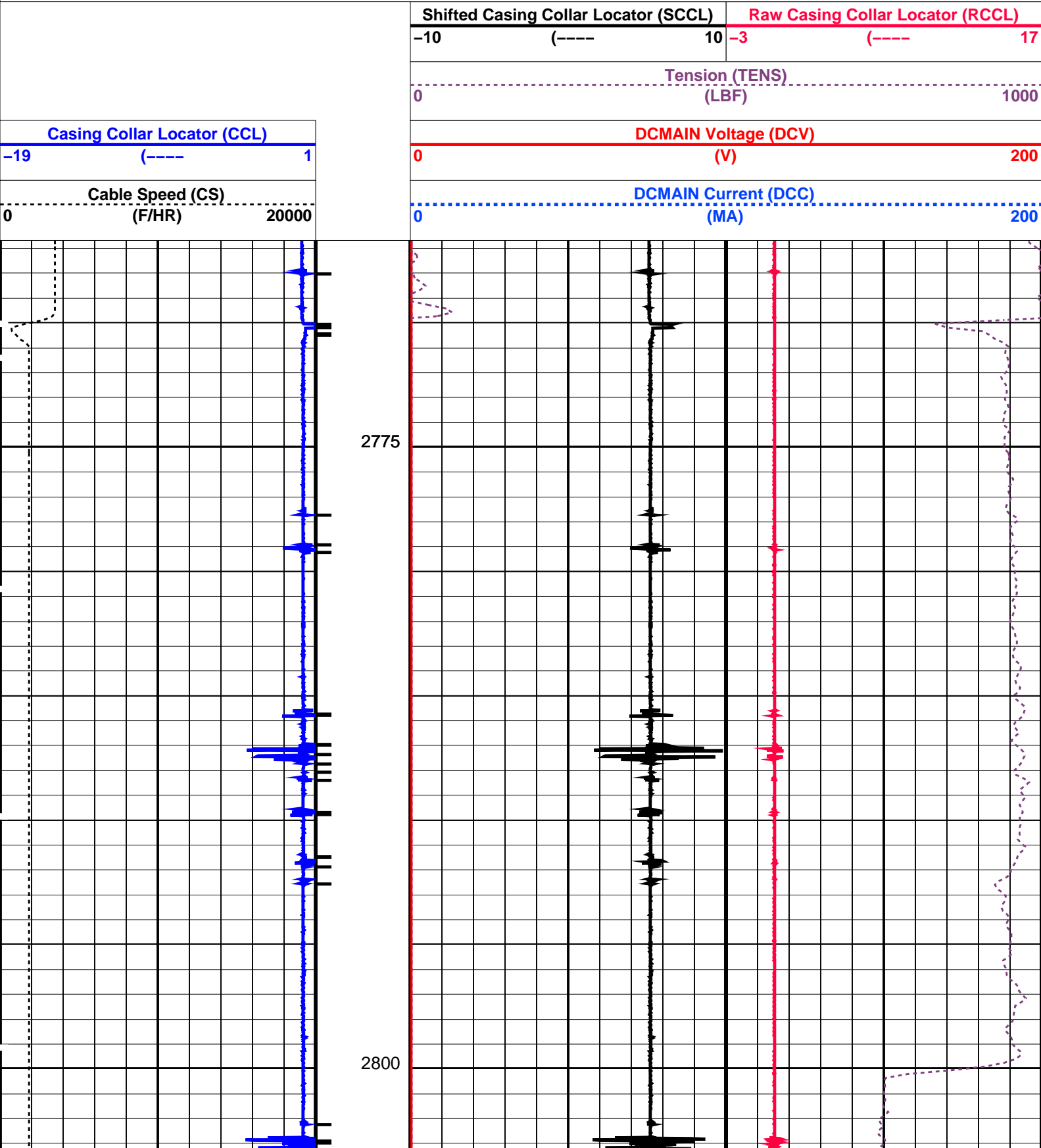
OP System Version: 15C0-309
MCM

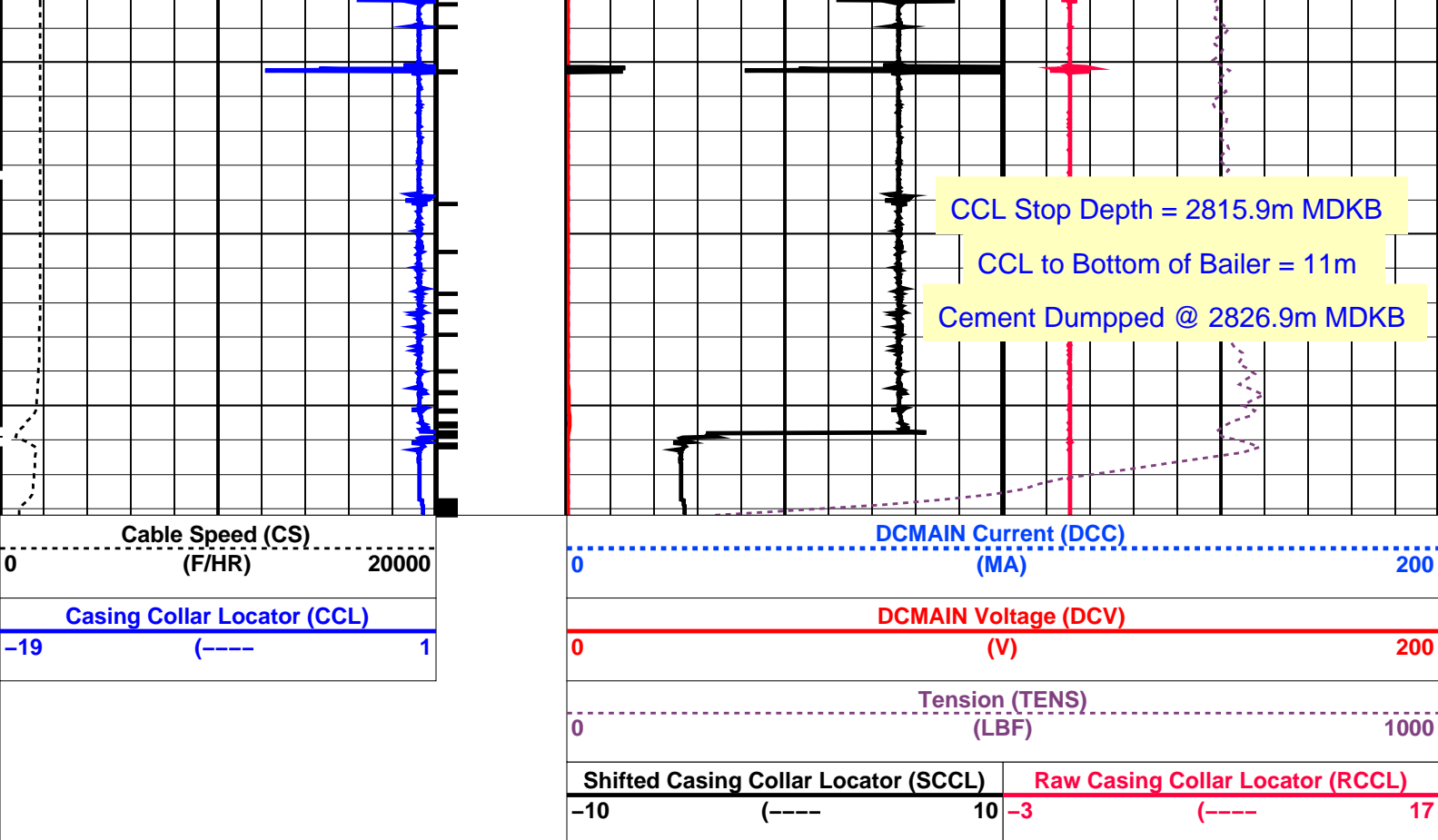
SHM_GUN SRPC-3474-Q4_2007 CCL-L 15C0-309

PIP SUMMARY

└─ Casing Collars

Time Mark Every 60 S





PIP SUMMARY

Time Mark Every 60 S

Casing Collars

Parameters

DLIS Name	Description	Value
CCL-L: Casing Collar Locator		
CCLD	CCL reset delay	12 IN
CCLT	CCL Detection Level	0.3 V

Format: PERFO Vertical Scale: 1:200 Graphics File Created: 20-Jan-2008 12:09

OP System Version: 15C0-309

MCM

SHM_GUN SRPC-3474-Q4_2007 CCL-L 15C0-309

Output DLIS Files

DEFAULT PERFO_082LUP FN:80 PRODUCER 20-Jan-2008 12:09

Schlumberger

Water Dump Pass

MAXIS Field Log

Output DLIS Files

OP System Version: 15C0-309

MCM

SHM_GUN

SRPC-3474-Q4_2007

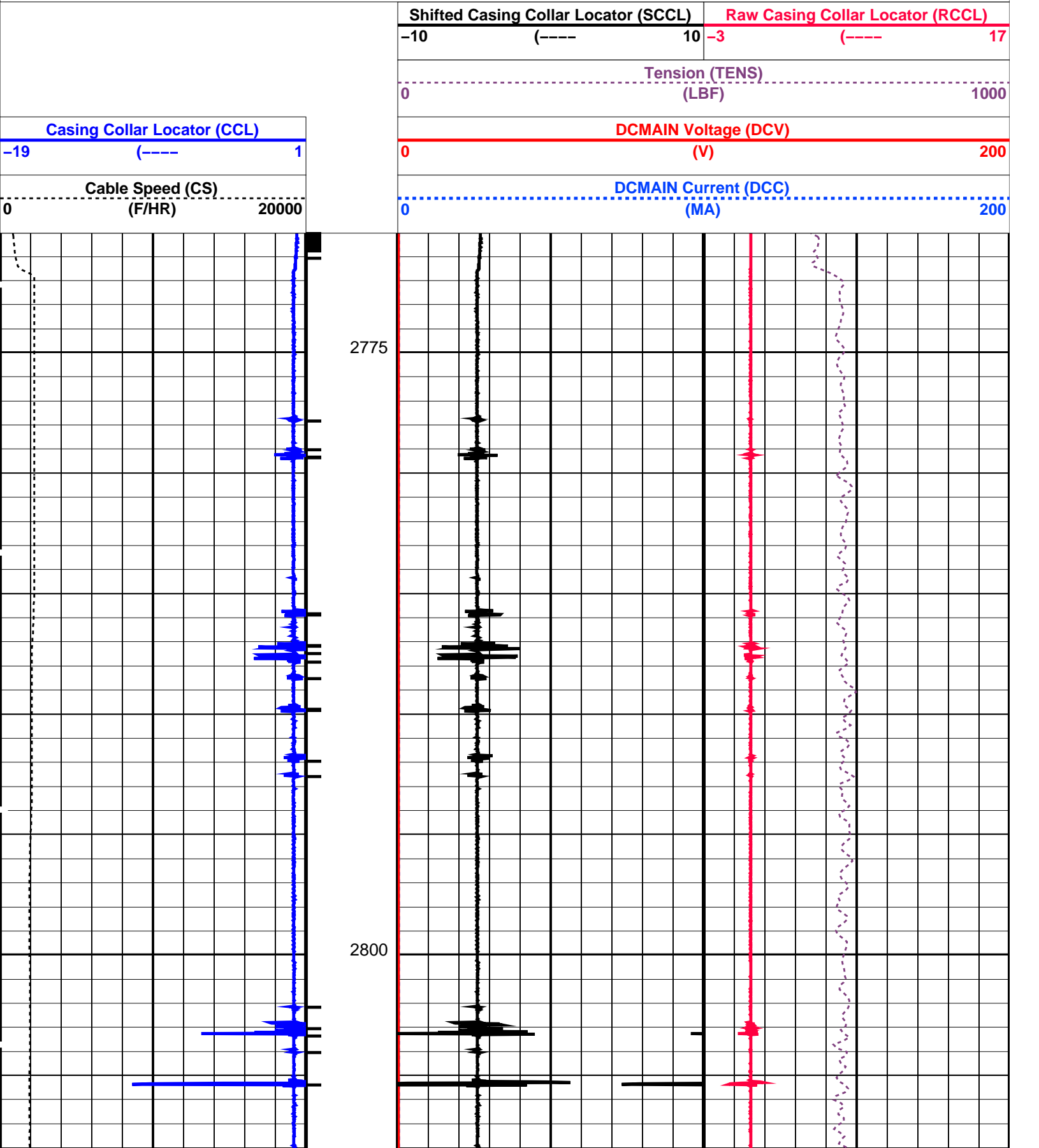
CCL-L

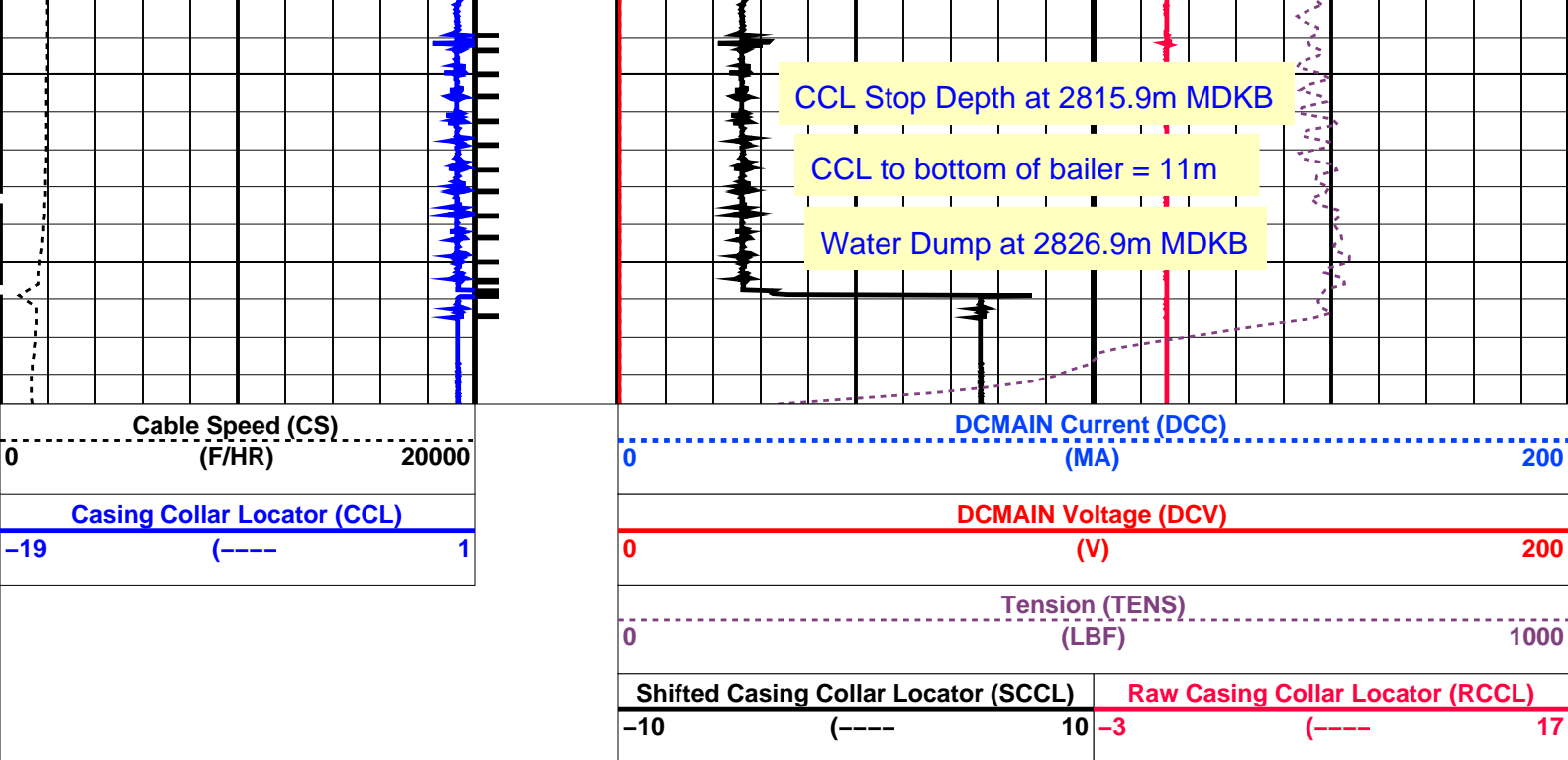
15C0-309

PIP SUMMARY

└─ Casing Collars

Time Mark Every 60 S





PIP SUMMARY

Time Mark Every 60 S


Casing Collars

Parameters			
DLIS Name	Description	Value	
CCL-L: Casing Collar Locator		12	IN
CCLD	CCL reset delay	0.3	V
CCLT	CCL Detection Level		

Format: PERFO Vertical Scale: 1:200 Graphics File Created: 20-Jan-2008 10:40

OP System Version: 15C0-309			
MCM			
SHM_GUN	SRPC-3474-Q4_2007	CCL-L	15C0-309

Output DLIS Files			
DEFAULT	PERFO_079LUP	FN:77	PRODUCER 20-Jan-2008 10:40



7" Posiset Plug
@ 2827.4m MDKB

MAXIS Field Log

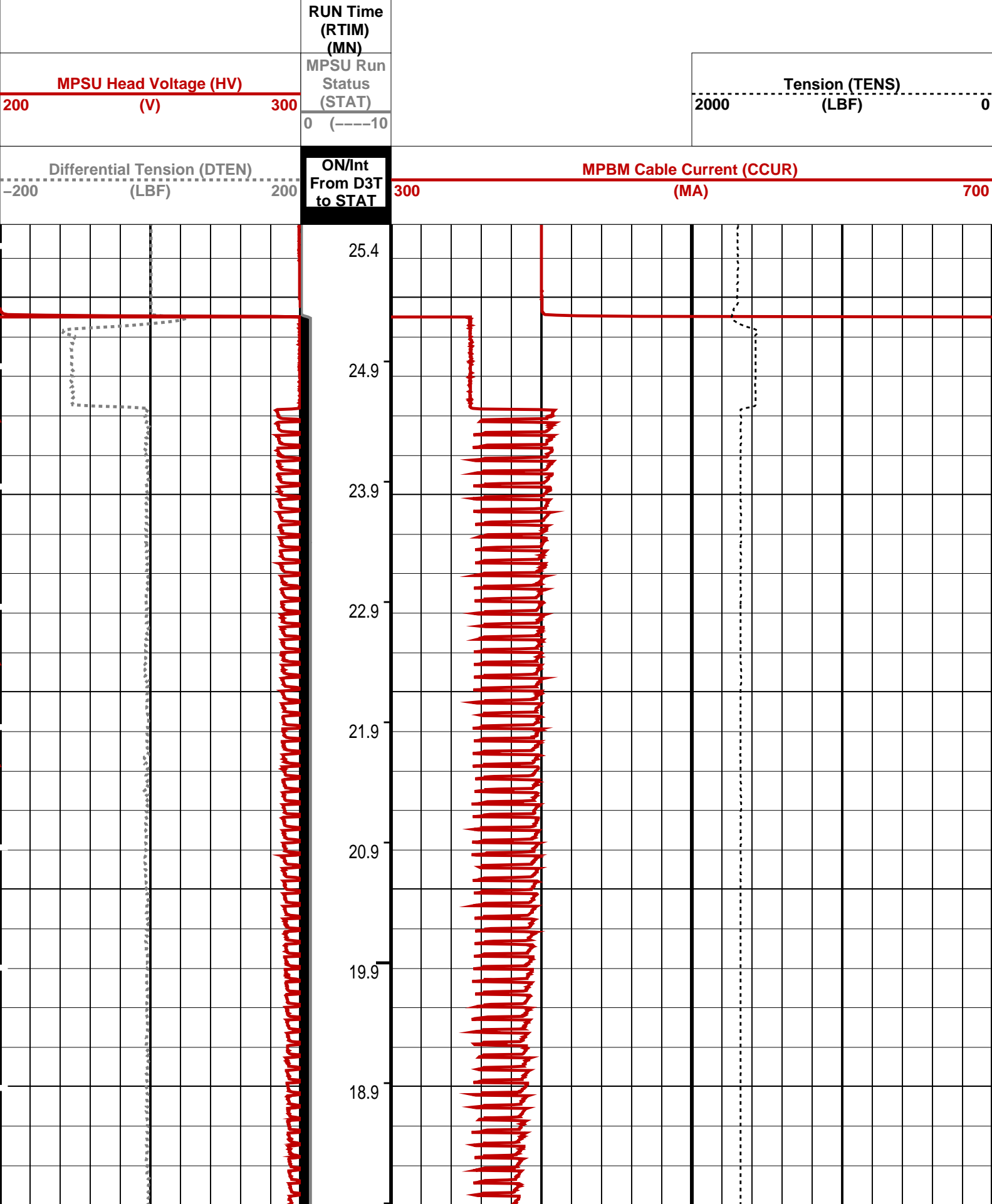
Output DLIS Files			
DEFAULT	MPBT_072LUP	FN:70	PRODUCER 20-Jan-2008 08:10

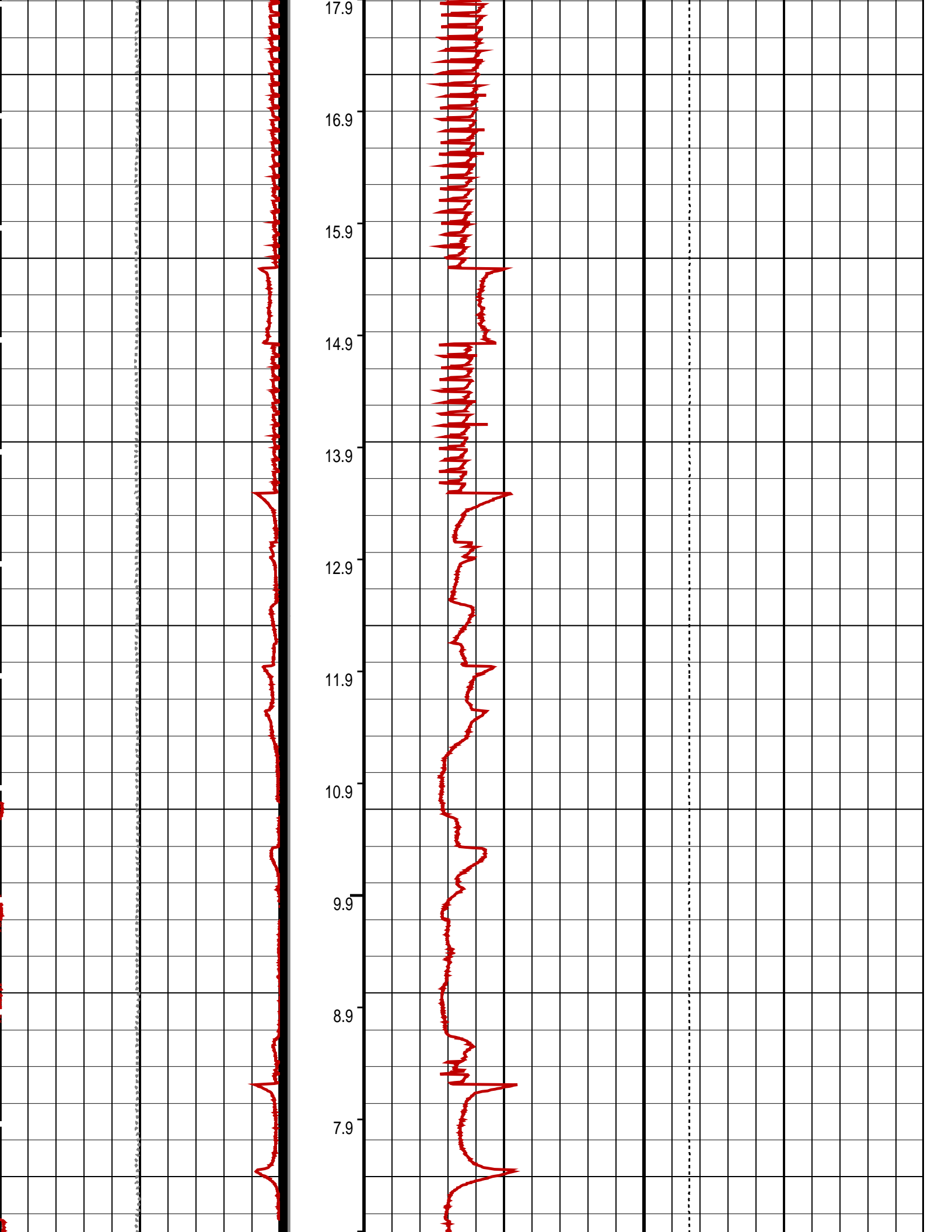
OP System Version: 15C0-309			
MCM			
MPBT_GUN	SRPC-3474-Q4_2007	MPBT_GUN	SRPC-3474-Q4_2007

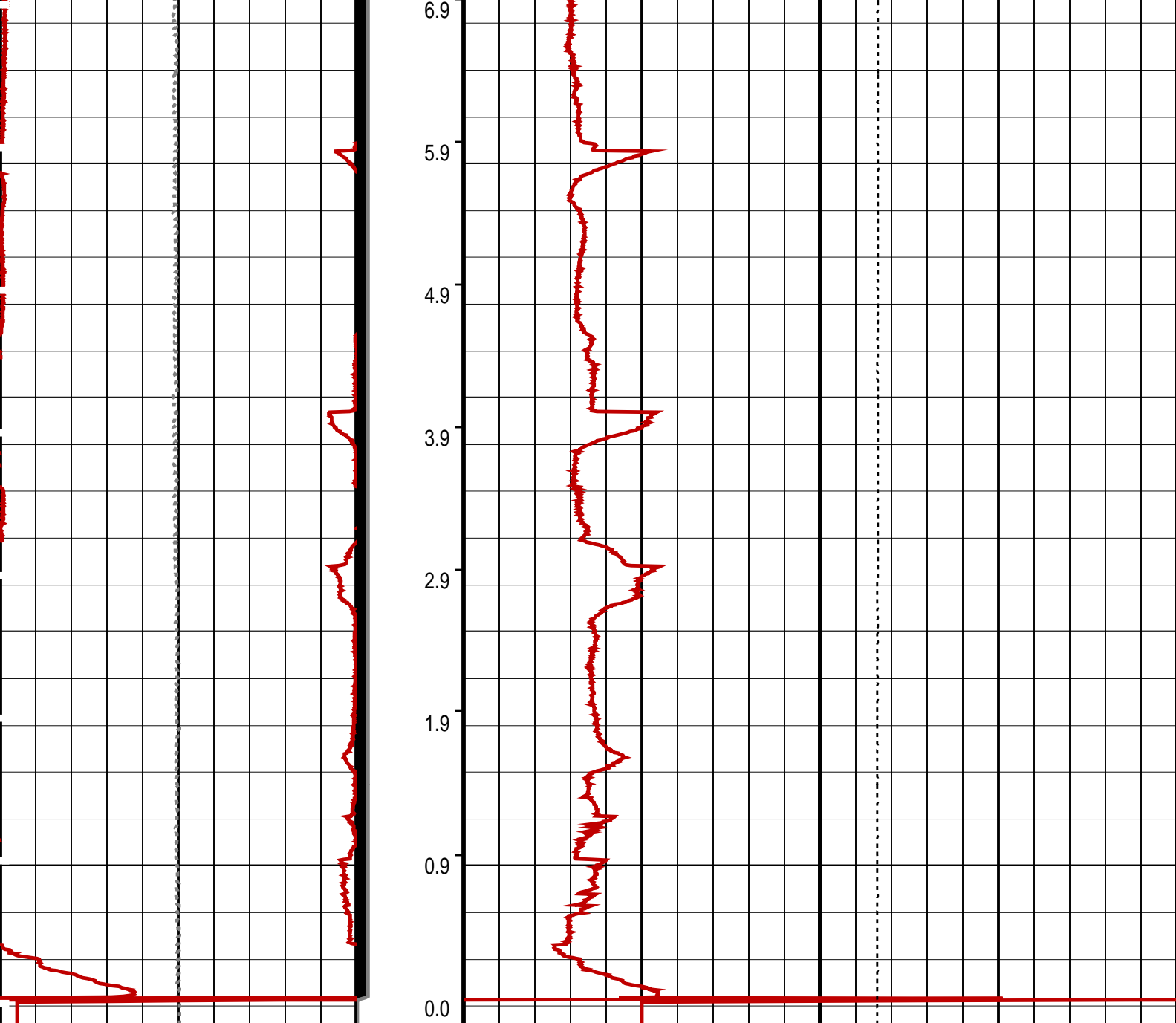
PIP SUMMARY

⊣ MPSU Run Time Every 1 MN
⇨ MPSU Run Time Every 10 MN

■ Time Mark Every 60 S







Differential Tension (DTEN) (LBF)	ON/Int From D3T to STAT	MPBM Cable Current (CCUR) (MA)
-200 200		300 700
MPSU Head Voltage (HV) (V)	MPSU Run Status (STAT)	Tension (TENS) (LBF)
200 300	0 (----10	2000 0
	RUN Time (RTIM) (MN)	

PIP SUMMARY

- ↵ MPSU Run Time Every 1 MN
- ↵ MPSU Run Time Every 10 MN

Time Mark Every 60 S

Parameters

DLIS Name	Description	Value
IPUMP	MPSU-CA: MECHANICAL PLUGBACK SETTING UNIT Intensifier Pump	TRUE

OP System Version: 15C0-309
MCM

MPEX-BA SRPC-3474-Q4_2007 MPSU-CA SRPC-3474-Q4_2007
CCL-L 15C0-309

Output DLIS Files

DEFAULT MPBT_072LUP FN:70 PRODUCER 20-Jan-2008 08:10



Plug Setting Pass

MAXIS Field Log

Output DLIS Files

DEFAULT MPBT_073LUP FN:71 PRODUCER 20-Jan-2008 08:37 2820.0 M 2770.0 M

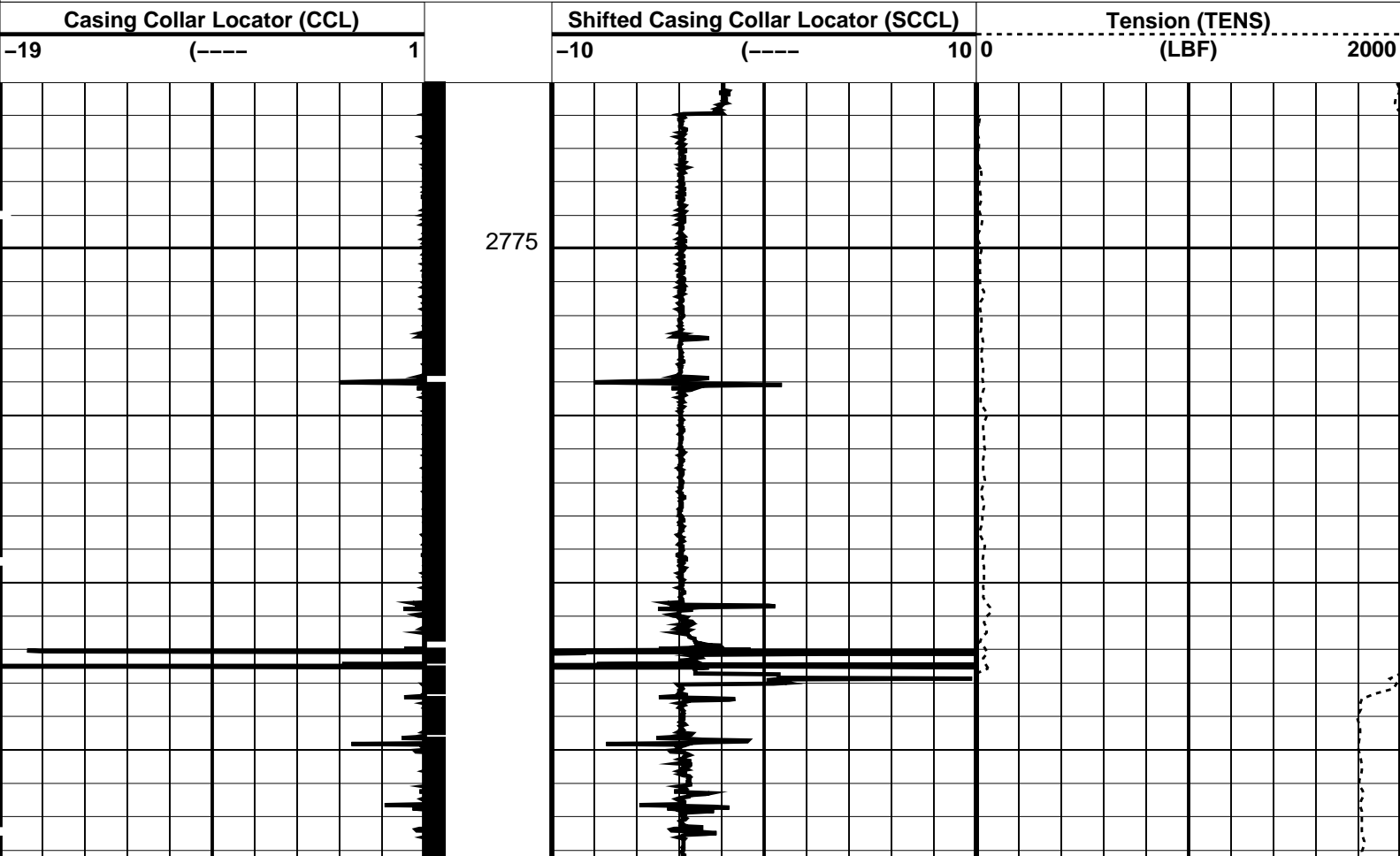
OP System Version: 15C0-309
MCM

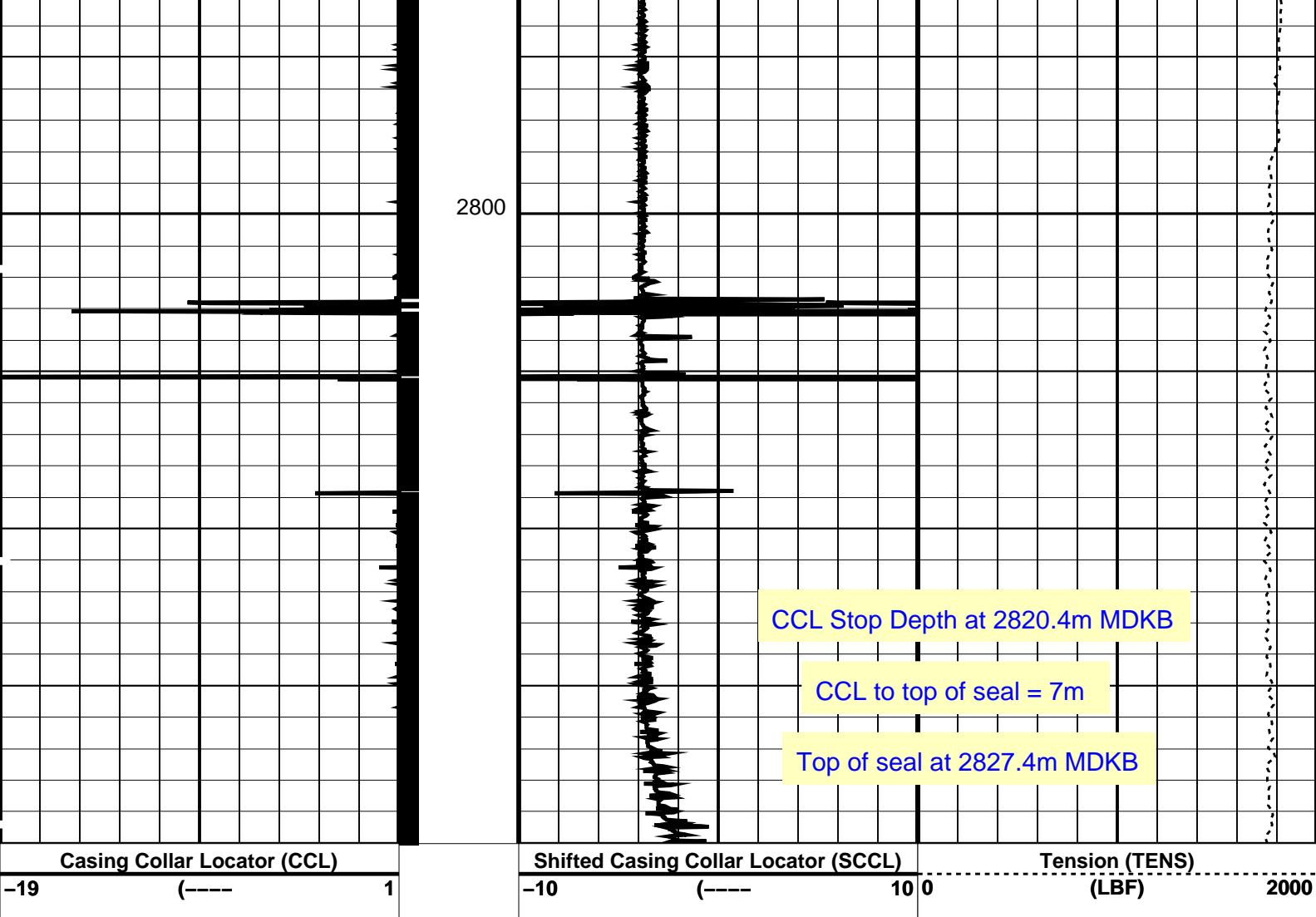
MPEX-BA SRPC-3474-Q4_2007 MPSU-CA SRPC-3474-Q4_2007
CCL-L 15C0-309

PIP SUMMARY

└─ Casing Collars

Time Mark Every 60 S





PIP SUMMARY

Time Mark Every 60 S

Casing Collars

Parameters		
DLIS Name	Description	Value
CCL-L	Casing Collar Locator	
CCLD	CCL reset delay	12 IN
CCLT	CCL Detection Level	0.3 V

Format: PERFO Vertical Scale: 1:200 Graphics File Created: 20-Jan-2008 08:37

OP System Version: 15C0-309			
MCM			
MPEX-BA	SRPC-3474-Q4_2007	MPSU-CA	SRPC-3474-Q4_2007
CCL-L	15C0-309		

Output DLIS Files			
DEFAULT	MPBT_073LUP	FN:71	PRODUCER 20-Jan-2008 08:37



Plug Correlation Pass

Output DLIS Files

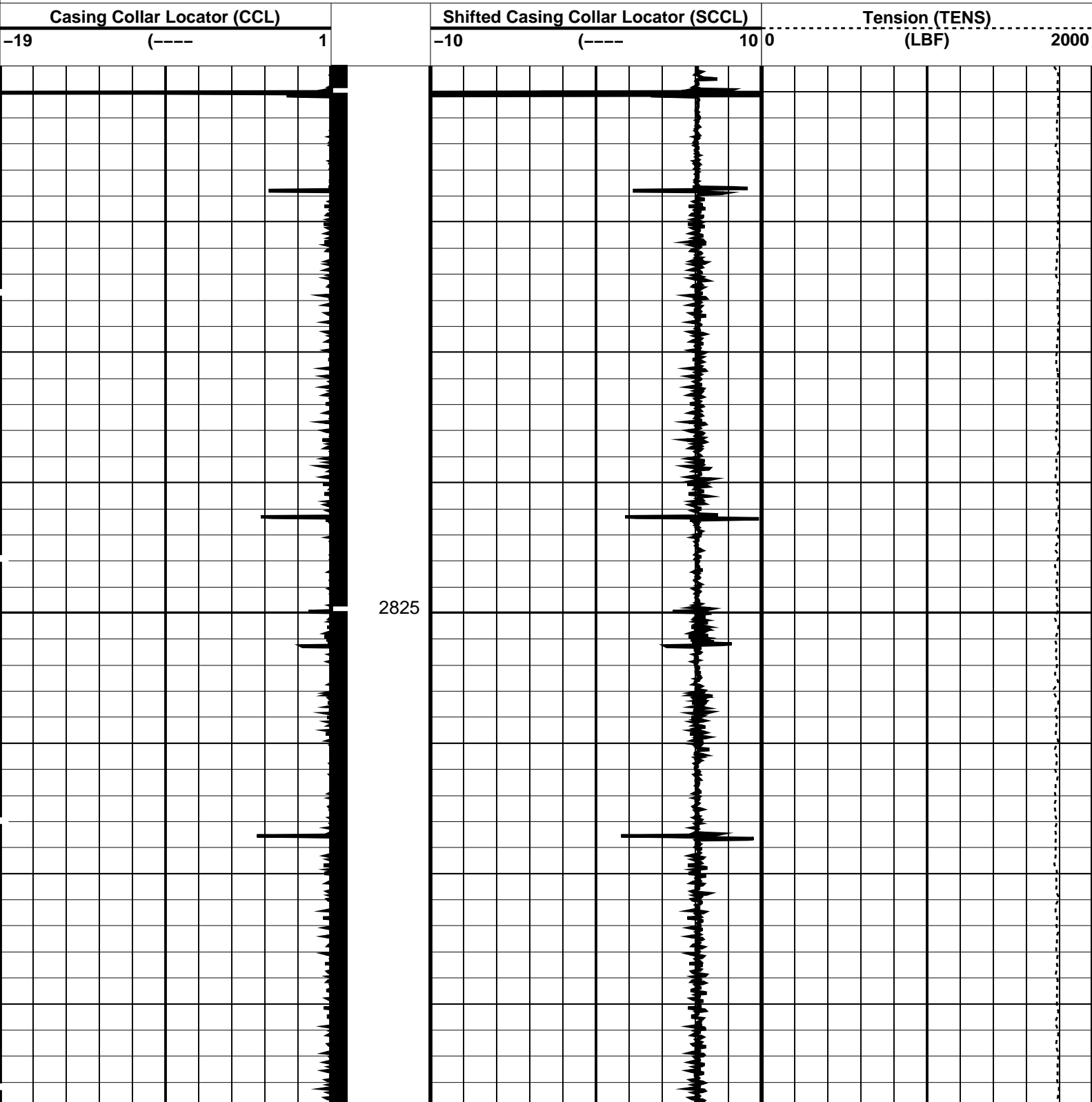
DEFAULT MPBT_071LUP FN:69 PRODUCER 20-Jan-2008 07:54 2850.6 M 2804.0 M

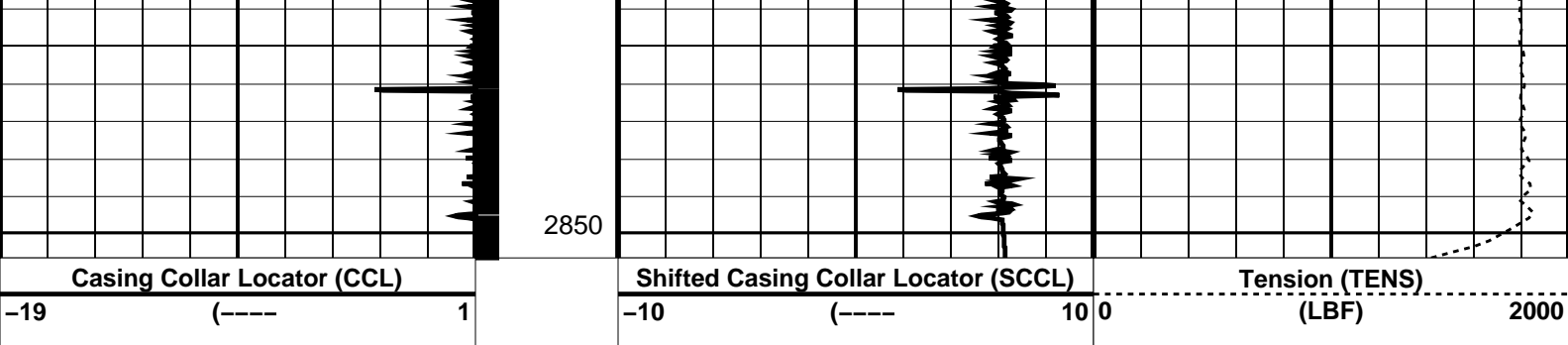
OP System Version: 15C0-309
MCM

MPEX-BA SRPC-3474-Q4_2007 MPSU-CA SRPC-3474-Q4_2007
CCL-L 15C0-309

PIP SUMMARY

Time Mark Every 60 S Casing Collars





PIP SUMMARY


Time Mark Every 60 S

Parameters		
DLIS Name	Description	Value
CCL-L: Casing Collar Locator		
CCLD	CCL reset delay	12 IN
CCLT	CCL Detection Level	0.3 V

Format: PERFO Vertical Scale: 1:200 Graphics File Created: 20-Jan-2008 07:54

OP System Version: 15C0-309			
MCM			
MPEX-BA	SRPC-3474-Q4_2007	MPSU-CA	SRPC-3474-Q4_2007
CCL-L	15C0-309		

Output DLIS Files			
DEFAULT	MPBT_071LUP	FN:69	PRODUCER 20-Jan-2008 07:54



Dummy Plug Pass

MAXIS Field Log

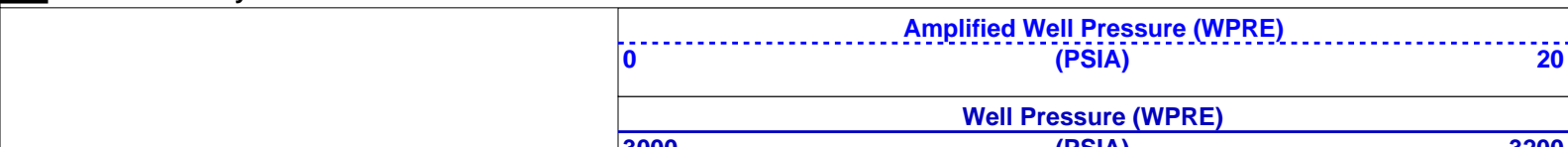
Company: Esso Australia Pty Ltd. Well: A-7a

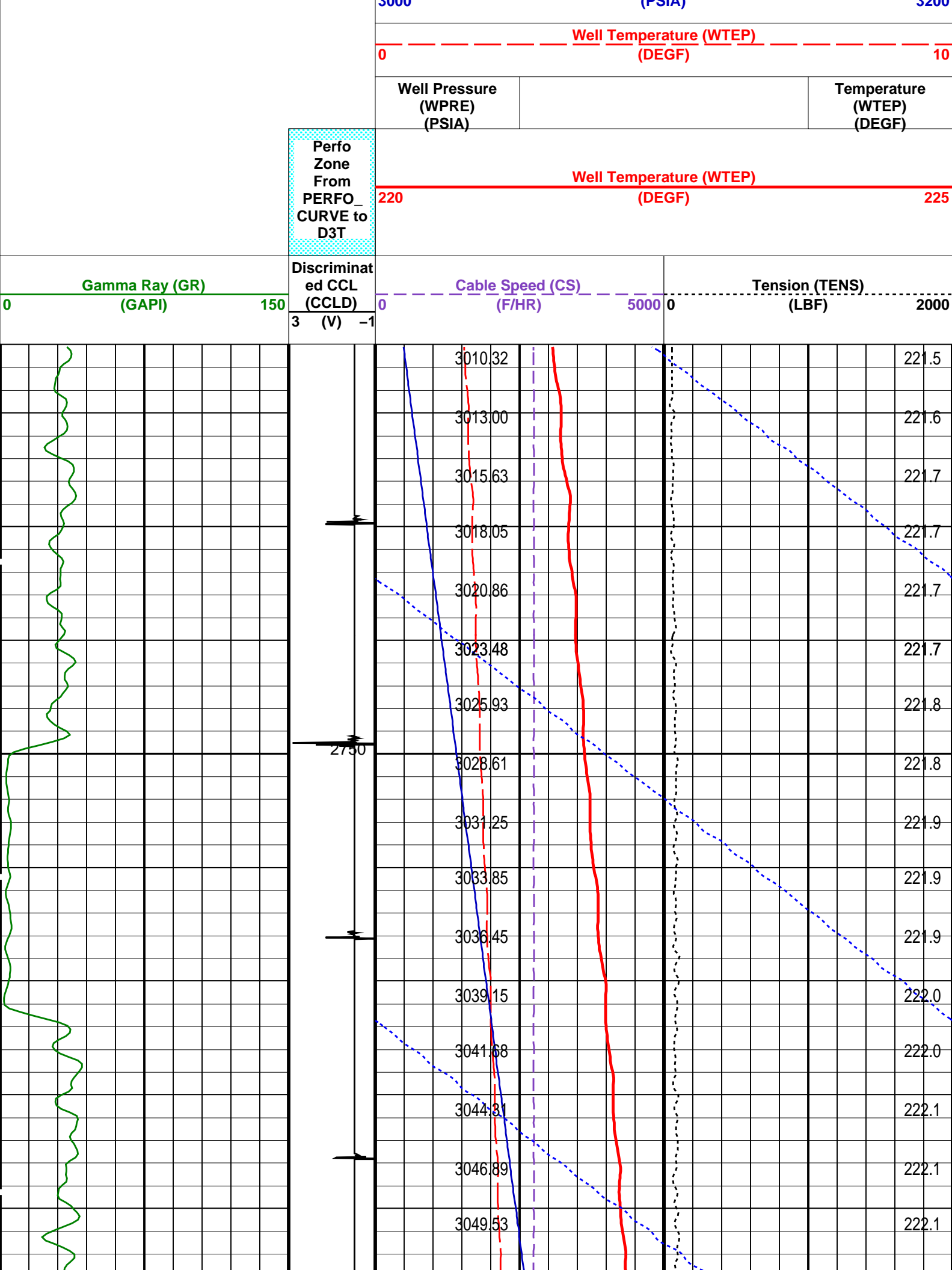
Input DLIS Files					
DEFAULT	PSP_046LUP	FN:44	PRODUCER	19-Jan-2008 15:05	2908.4 M 2736.3 M
Output DLIS Files					
DEFAULT	PSP_059PUP	FN:57	PRODUCER	19-Jan-2008 18:26	2903.4 M 2731.9 M

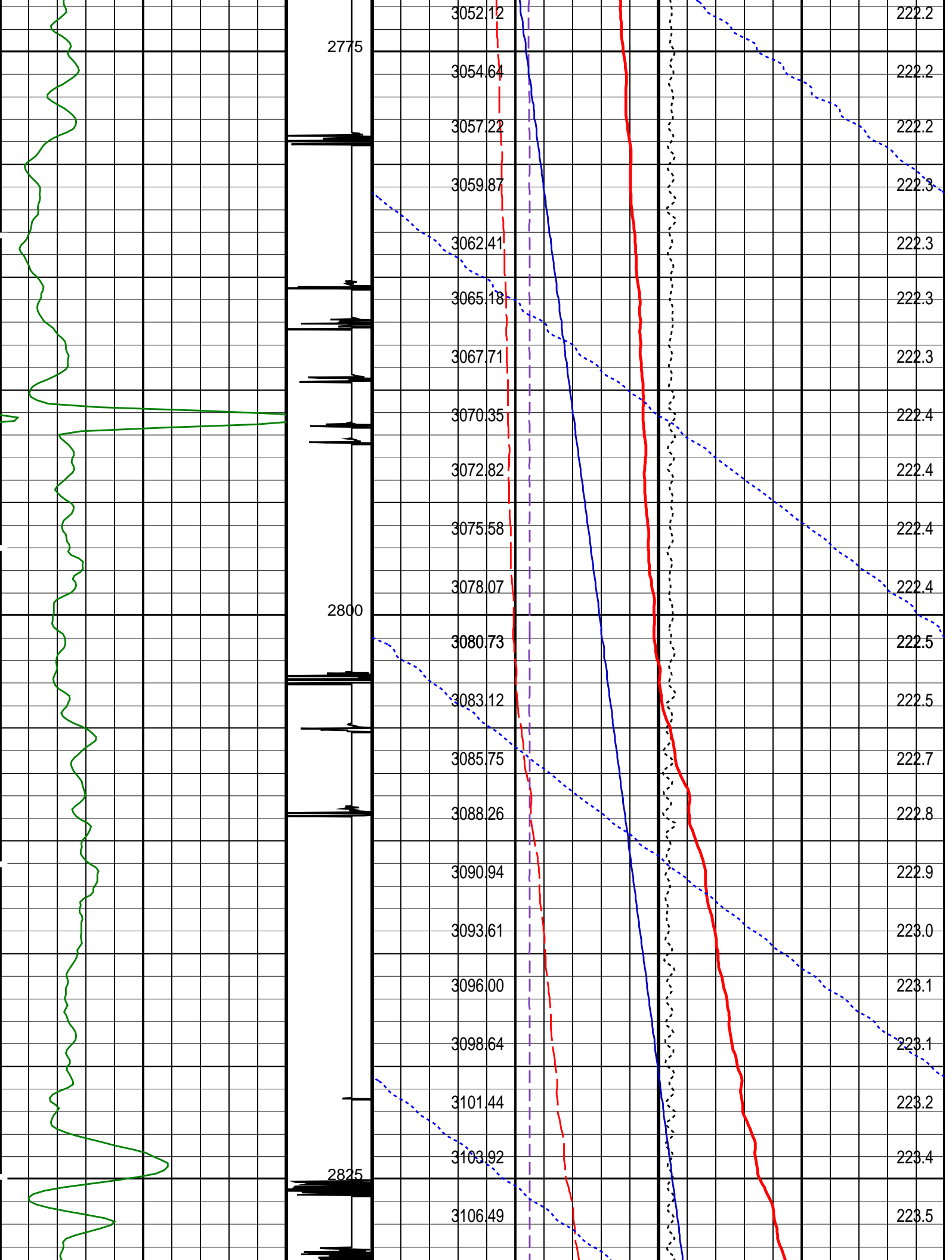
OP System Version: 15C0-309	
MCM	
PSPT-B	SRPC-3474-Q4_2007

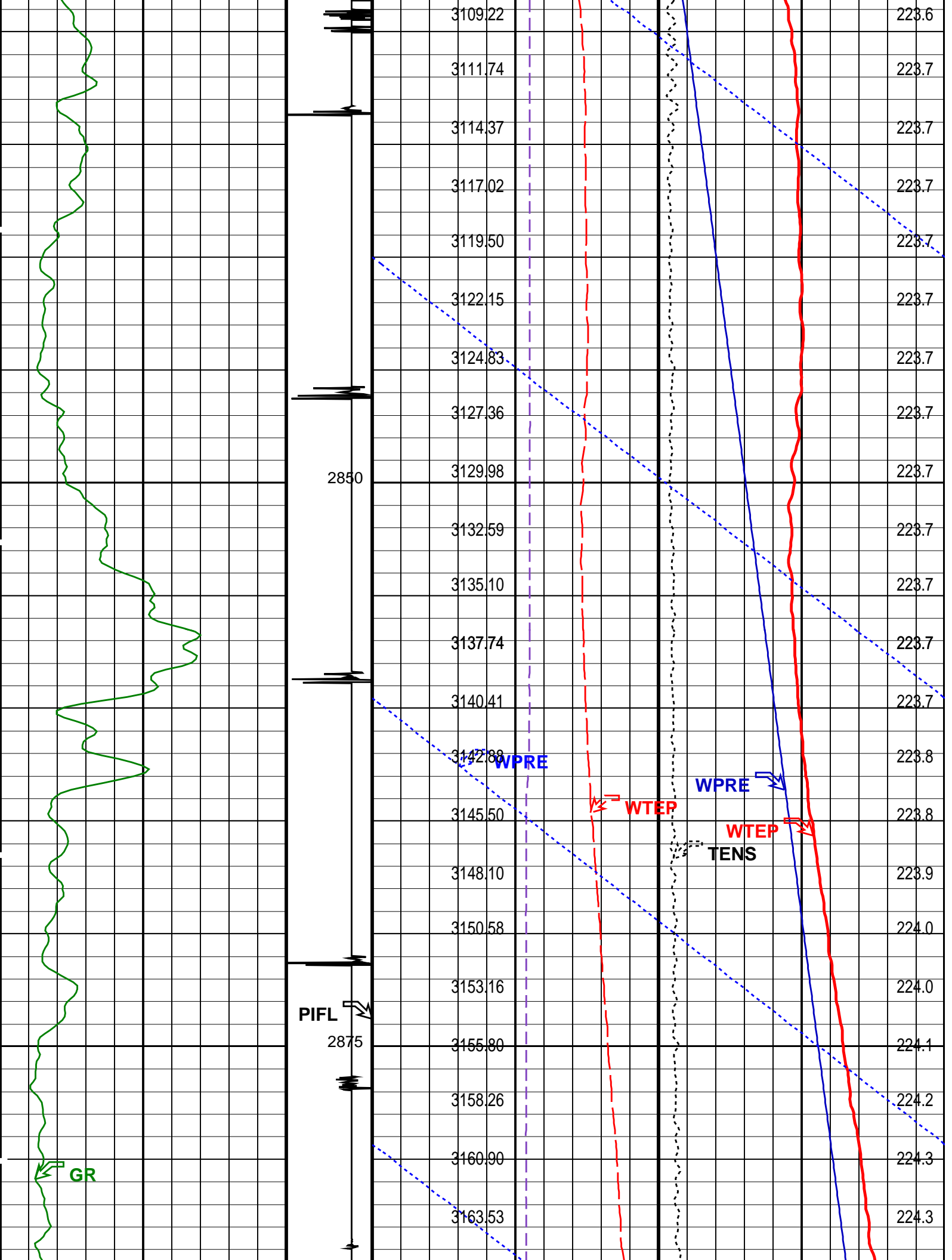
PIP SUMMARY

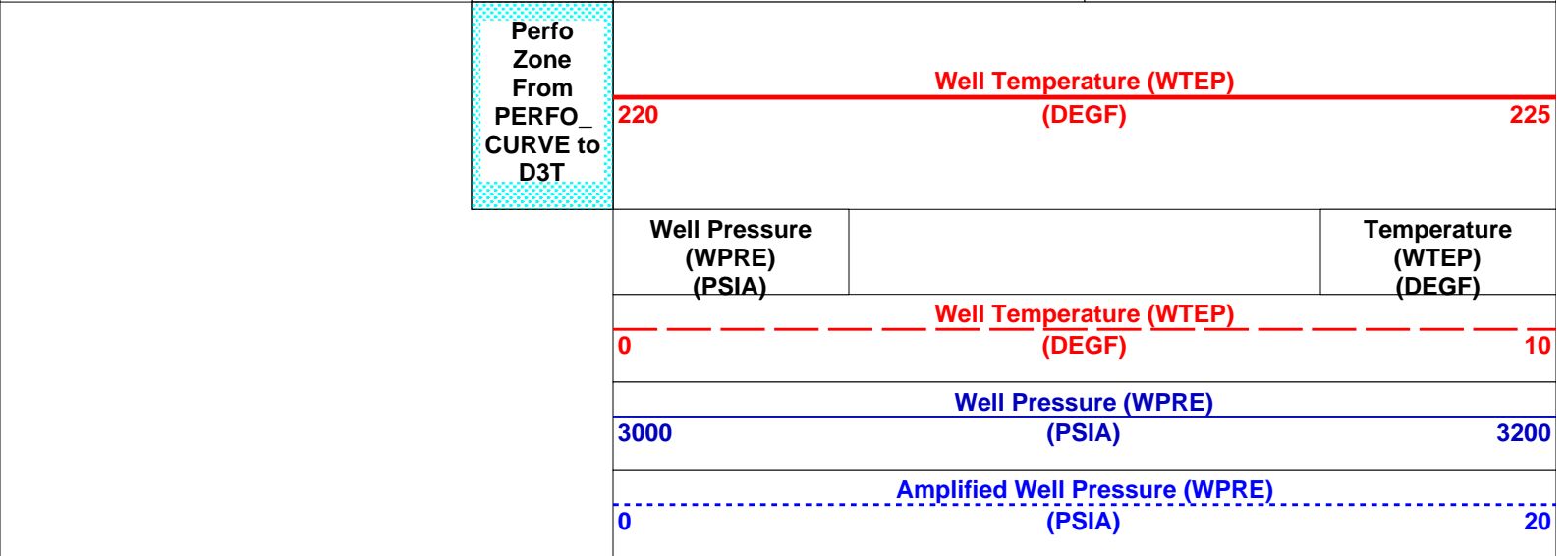
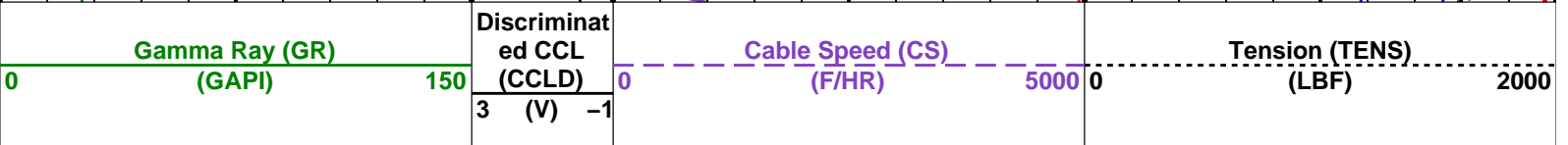
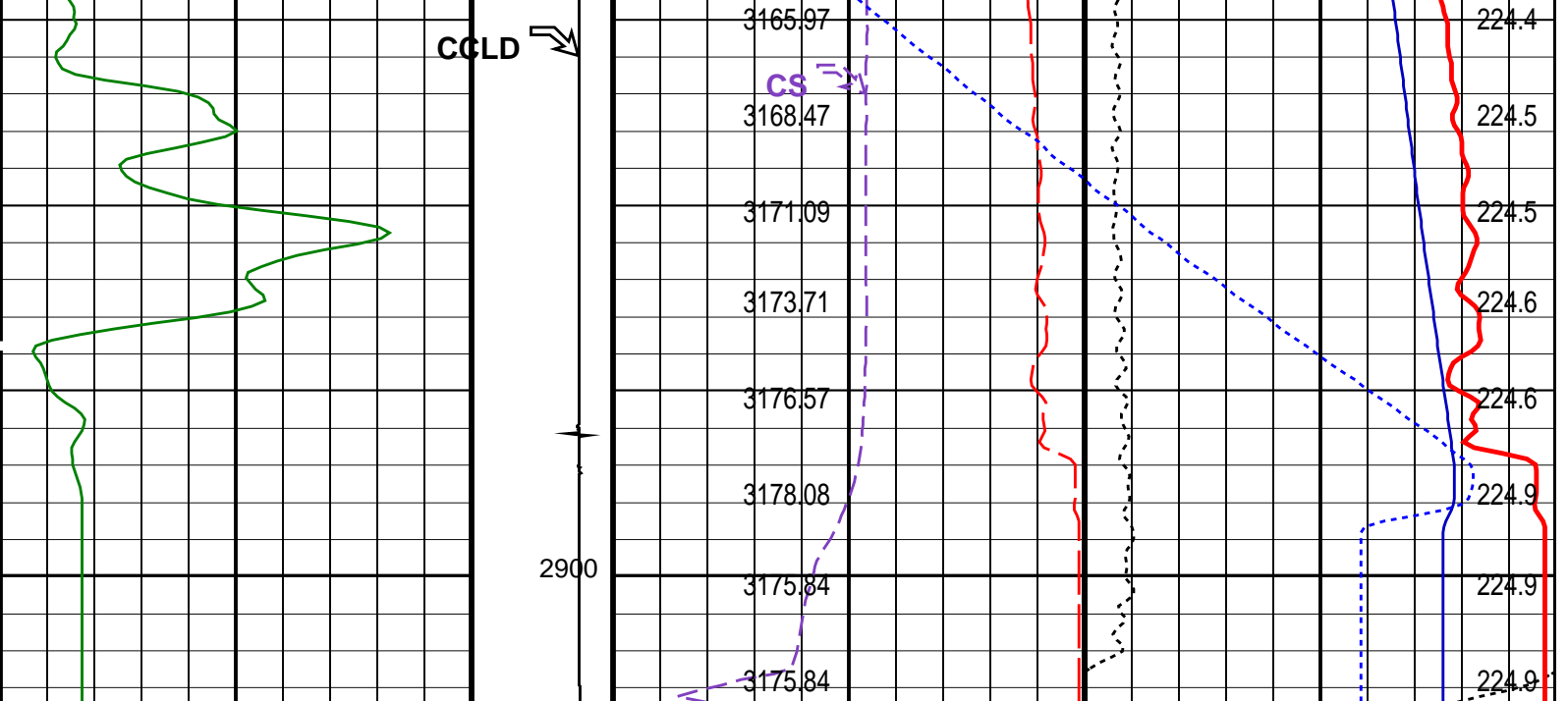
Time Mark Every 60 S











PIP SUMMARY

Time Mark Every 60 S

Format: PSP_1 Vertical Scale: 1:200 Graphics File Created: 19-Jan-2008 18:26

OP System Version: 15C0-309

MCM

PSPT-B SRPC-3474-Q4_2007

Parameters		
DLIS Name	Description	Value
DO	System and Miscellaneous	-5.0 M
PP	Depth Offset for Playback	NORMAL
	Playback Processing	

Input DLIS Files					
DEFAULT	PSP_046LUP	FN:44	PRODUCER	19-Jan-2008 15:05	2736.3 M

Output DLIS Files

Company: **Esso Australia Pty Ltd.**

Schlumberger

Well: **A-7a**

Field: **Halibut**

Rig: **Crane**

Country: **Australia**

7" Posiset Plug
Setting Record