

Company: Esso Australia Pty Ltd.

Well: FTA A4C

Field: Bass Strait

Platform: Fortescue

Country: Australia

2 1/8" Phased Enerjet
Perforation Record

Platform: Fortescue
Field: Bass Strait
Location: Bass Strait
Well: FTA A4C
Company: Esso Australia Pty Ltd.

Platform:		Fortescue		Elev.:		K.B. 42.49 m			
Field:		Bass Strait		G.L.		-76 m			
Location:		Bass Strait		D.F.		42.49 m			
Well:		FTA A4C							
Company:		Esso Australia Pt							
Logging Date		LOCATION							
		Permanent Datum:		Mean Seal Level		Elev.:			
State: Victoria		Log Measured From:		Kelly bushing		42.5 m above Perm. Datum			
		Drilling Measured From:		Rotary Table					
Run Number		20-Jan-2008		Max. Well Deviation 60.7 deg		Longitude 148°16' 36.62" E		Latitude 38° 24' 31.39" S	
Depth Driller		1							
Schlumberger Depth		3030.6 m							
Bottom Log Interval		3221 m Not Tagged							
Top Log Interval		3214 m							
Casing Fluid Type		3212 m		Production Fluids					
Salinity									
Density		8.55 g/cm3							
Fluid Level		0 m							
BIT/CASING/TUBING STRING									
Bit Size		8.500 in							
From		0 m							
To		3252.7 m							
Casing/Tubing Size		2.875 in							
Weight		6.4 lbm/ft							
Grade		13Cr-80							
From		20.4 m							
To		3146.96 m							
Maximum Recorded Temperatures		113 degC							
Logger On Bottom		20-Jan-2008		Time		8:30			
Unit Number		Location		3829		AUSL			
Recorded By		Owen Darby							
Witnessed By		Mark Turner							

PVT DATA					Run 1	Run 2	Run 3
Oil Density							
Water Salinity							
Gas Gravity							
Bo							
Bw							
1/Bg							
Bubble Point Pressure							
Bubble Point Temperature							
Solution GOR							
Maximum Deviation					60.7 deg		
CEMENTING DATA							
Primary/Squeeze					Primary		
Casing String No							
Lead Cement Type							
Volume							
Density							
Water Loss							
Additives							
Tail Cement Type							
Volume							
Density							
Water Loss							
Additives							
Expected Cement Top							
Logging Date							
Run Number							
Depth Driller							
Schlumberger Depth							
Bottom Log Interval							
Top Log Interval							
Casing Fluid Type							
Salinity							
Density							
Fluid Level							
BIT/CASING/TUBING STRING							
Bit Size							
From							
To							
Casing/Tubing Size							
Weight							
Grade							
From							
To							
Maximum Recorded Temperatures							
Logger On Bottom							
Unit Number			Location				
Recorded By							
Witnessed By							

DEPTH SUMMARY LISTING

Date Created: 20-JAN-2008 13:48:30

Depth System Equipment

Depth Measuring Device		Tension Device		Logging Cable	
Type:	IDW-H	Type:	CMTD-B/A	Type:	2-32ZT
Serial Number:	797	Serial Number:	2268	Serial Number:	2268
Calibration Date:	4-Dec-2007	Calibration Date:	13-01-2008	Length:	6794.91 M
Calibrator Serial Number:	1009	Calibrator Serial Number:	1174		
Calibration Cable Type:	2-32ZT	Calibration Gain:	1.24	Conveyance Method:	Wireline
Wheel Correction 1:	-5	Calibration Offset:	-809.00	Rig Type:	Offshore_Fixed
Wheel Correction 2:	-2				

Depth Control Parameters

Log Sequence:	Subsequent Trip To the Well
Reference Log Name:	FTA A4c Petrophysical analysis
Reference Log Run Number:	
Reference Log Date:	N/A
Subsequent Trip Down Log Correction:	5.00 M

Depth Control Remarks

1. Correlated to solar composite log provided by client
2. Used IDW as primary depth control
3. Used Z-Chart as secondary depth control
- 4.
- 5.
- 6.

DISCLAIMER

THE USE OF AND RELIANCE UPON THIS RECORDED-DATA BY THE HEREIN NAMED COMPANY (AND ANY OF ITS AFFILIATES, PARTNERS, REPRESENTATIVES, AGENTS, CONSULTANTS AND EMPLOYEES) IS SUBJECT TO THE TERMS AND CONDITIONS AGREED UPON BETWEEN SCHLUMBERGER AND THE COMPANY, INCLUDING: (a) RESTRICTIONS ON USE OF THE RECORDED-DATA; (b) DISCLAIMERS AND WAIVERS OF WARRANTIES AND REPRESENTATIONS REGARDING COMPANY'S USE OF AND RELIANCE UPON THE RECORDED-DATA; AND (c) CUSTOMER'S FULL AND SOLE RESPONSIBILITY FOR ANY INFERENCE DRAWN OR DECISION MADE IN CONNECTION WITH THE USE OF THIS RECORDED-DATA.

OTHER SERVICES1	OTHER SERVICES2
OS1: MPBT / dump bailers	OS1:
OS2:	OS2:
OS3:	OS3:
OS4:	OS4:
OS5:	OS5:
REMARKS: RUN NUMBER 1	REMARKS: RUN NUMBER 2
Correlated to petrophysical analysis log provided by client.	
Objective:	
Perforate the interval 3212.0m to 3214.0m MDKB using 2 1/8", 6spf, 45 +/- deg	
phased powerjet guns with MWPT whilst attempting to obtain a 300 psi under	
balance.	

SBHP= 2845.3 psia, SBHT= 234.9 degF
FBHP= 3112.0 psia, FBHT= 227.3 degF
Crew:
Operations = Luke Dooley, Natha
Specialist = Owen Darby

RUN 1			RUN 2		
SERVICE ORDER #: PROGRAM VERSION: 15C0-309 FLUID LEVEL: 0 m			SERVICE ORDER #: PROGRAM VERSION: FLUID LEVEL:		
LOGGED INTERVAL	START	STOP	LOGGED INTERVAL	START	STOP

	RUN 1	RUN 2
1	1	1
2	1	1
3	1	1
4	1	1
5	1	1
6	1	1
7	1	1
8	1	1
9	1	1
10	1	1
11	1	1
12	1	1
13	1	1
14	1	1
15	1	1
16	1	1
17	1	1
18	1	1
19	1	1
20	1	1
21	1	1
22	1	1
23	1	1
24	1	1
25	1	1
26	1	1
27	1	1
28	1	1
29	1	1
30	1	1
31	1	1
32	1	1
33	1	1
34	1	1
35	1	1
36	1	1
37	1	1
38	1	1
39	1	1
40	1	1
41	1	1
42	1	1
43	1	1
44	1	1
45	1	1
46	1	1
47	1	1
48	1	1
49	1	1
50	1	1
51	1	1
52	1	1
53	1	1
54	1	1
55	1	1
56	1	1
57	1	1
58	1	1
59	1	1
60	1	1
61	1	1
62	1	1
63	1	1
64	1	1
65	1	1
66	1	1
67	1	1
68	1	1
69	1	1
70	1	1
71	1	1
72	1	1
73	1	1
74	1	1
75	1	1
76	1	1
77	1	1
78	1	1
79	1	1
80	1	1
81	1	1
82	1	1
83	1	1
84	1	1
85	1	1
86	1	1
87	1	1
88	1	1
89	1	1
90	1	1
91	1	1
92	1	1
93	1	1
94	1	1
95	1	1
96	1	1
97	1	1
98	1	1
99	1	1
100	1	1

SURFACE EQUIPMENT		DOWNHOLE EQUIPMENT	
MWPM-AA			
MH-32			11.78
EQF-46			11.30
EQF-46 3001			
EQF-46			9.47
EQF-46 3002			
MPD-MB			7.64
MPD-MB 1530			
AH-ESIC 4606310			7.10
AH-ESIC 4606310			
MWGT-AA			6.80
MWPG-AA 24			
MWGH-AA 19	MWPG GR	2.41	
MWPT-CA 0			5.82
MWPH-AA 90			
MWPS-AA			

CCL
SMWP Pres
SMWP Temp
Tension

TOOL ZERO

MWP_GUN
GUN-2 1/8" EnerJet Gun

3.00

TOOL BOTTOM

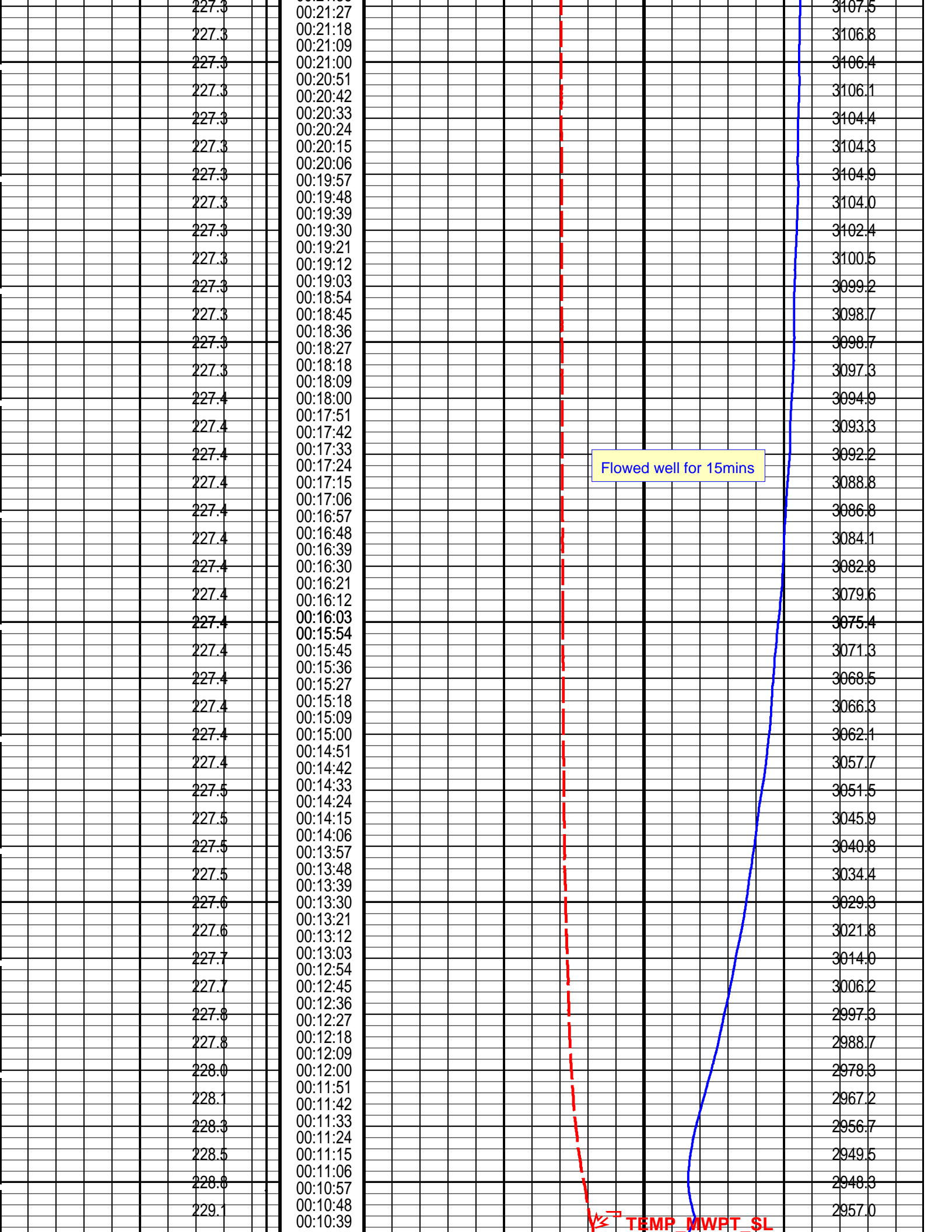
MAXIMUM STRING DIAMETER 2.13 IN
MEASUREMENTS RELATIVE TO TOOL ZERO
ALL LENGTHS IN METERS

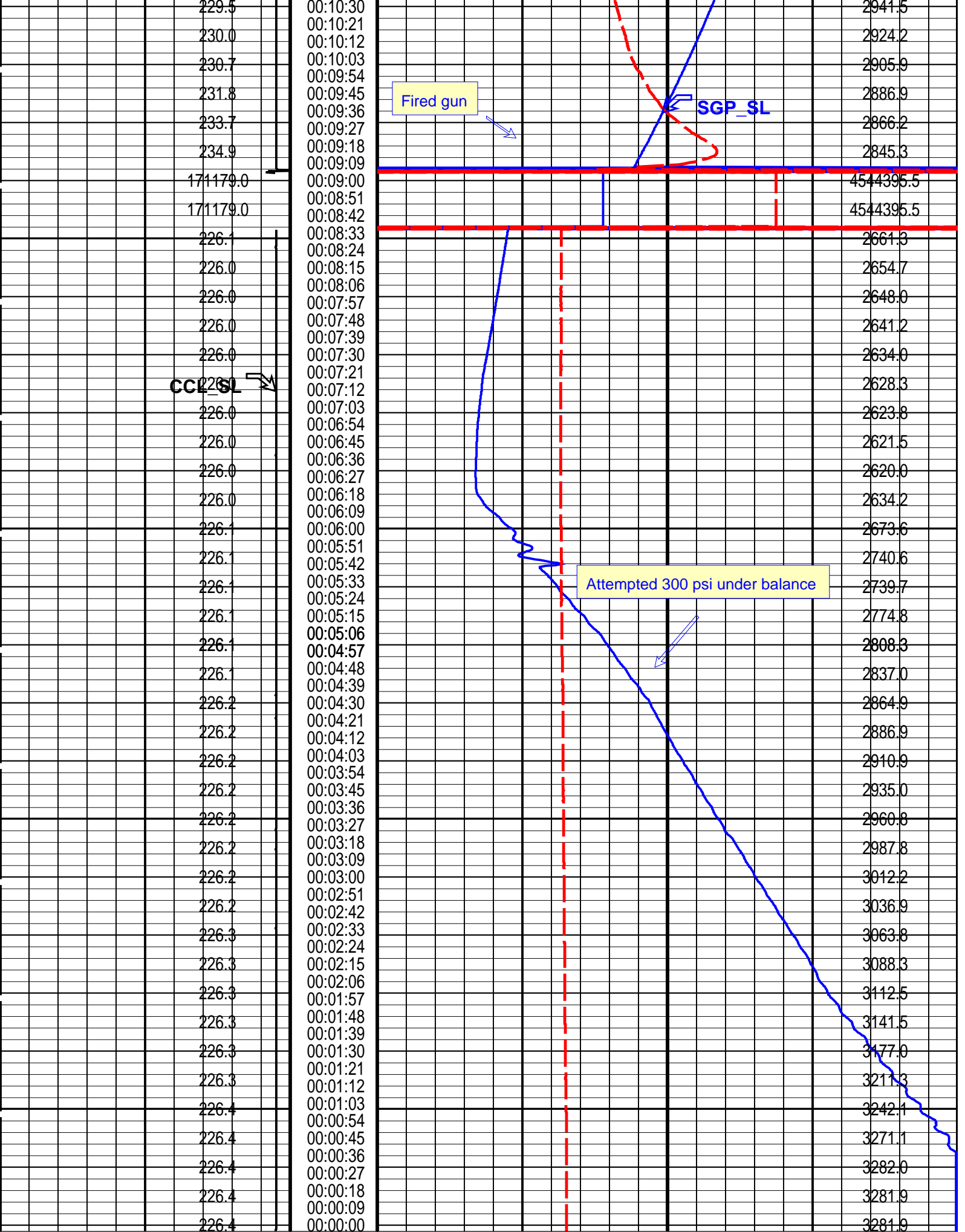
Client: Esso Australia Pty Ltd
Well: FTA A4c
Field: Bass Strait
State: Victoria
CountryAustralia

Drawing Date: 1/17/2008


Rig Name: Fortescue
Reference Datum: Mean Sea Level
Elevation: 42.5 m

Production String	(in)		(m)	Well Schematic	(m)	(in)		Casing String
	OD	ID	MD		MD	OD	ID	
Tubing	2.875		0.0		22.0	20.000		Casing String
						10.750		Casing String
					190.0	20.000		Casing Shoe
SSSV	2.875		431.2					
Gas Lift Mandrel	2.875		699.3					
Gas Lift Mandrel	2.875		1656.8					
Gas Lift Mandrel	2.875		2317.6					





	Temperature (TEMP_MWPT_SL) (DEGF)	(ETIM) (S)	Temperature (TEMP_MWPT_SL) (DEGF)						215	250
									Pressure (SGP_SL) (PSIG)	
PIP SUMMARY										
Time Mark Every 60 S										
Parameters										
DLIS Name		Description						Value		
MWPT-CA: MEASUREMENT WHILE PERFORATING TOOL										
DEVI_FL_CORR		Deviation Angle for Flow Line Correction						0	DEG	
FLD		Flow Line Density						1	G/C3	
MWPT_NULL_SOURCE		MWPT NULL Temperature Source						TEMS		
MWPT_NULL_TEMP		MWPT NULL Temperature						0.0	DEGC	
System and Miscellaneous										
PP		Playback Processing						NORMAL		
Format: MWP_SL		Vertical Scale: 1" per 60S				Graphics File Created: 20-Jan-2008 11:17				
OP System Version: 15C0-309										
MCM										
MWP_GUN		15C0-309		MWPT-CA		15C0-309				
MWGT-AA		15C0-309								
Input DLIS Files										
DEFAULT		PERFO_026LTP		FN:25	PRODUCER	20-Jan-2008 09:13	3209.5 M	3.9 M		
Output DLIS Files										
DEFAULT		PERFO_029PTP		FN:28	PRODUCER	20-Jan-2008 11:17				



2 1/8" Phased Enerjet
Shooting Pass

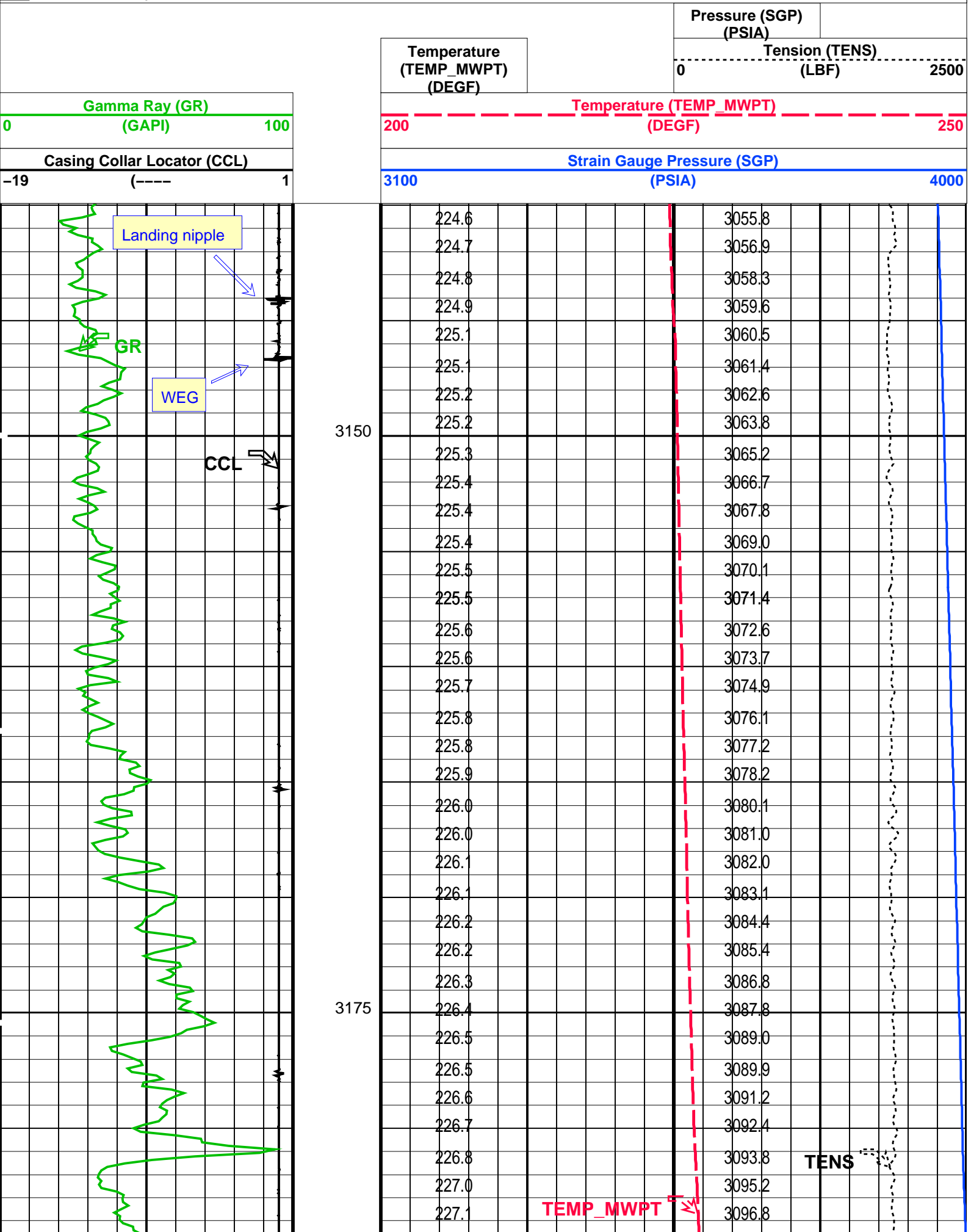
MAXIS Field Log

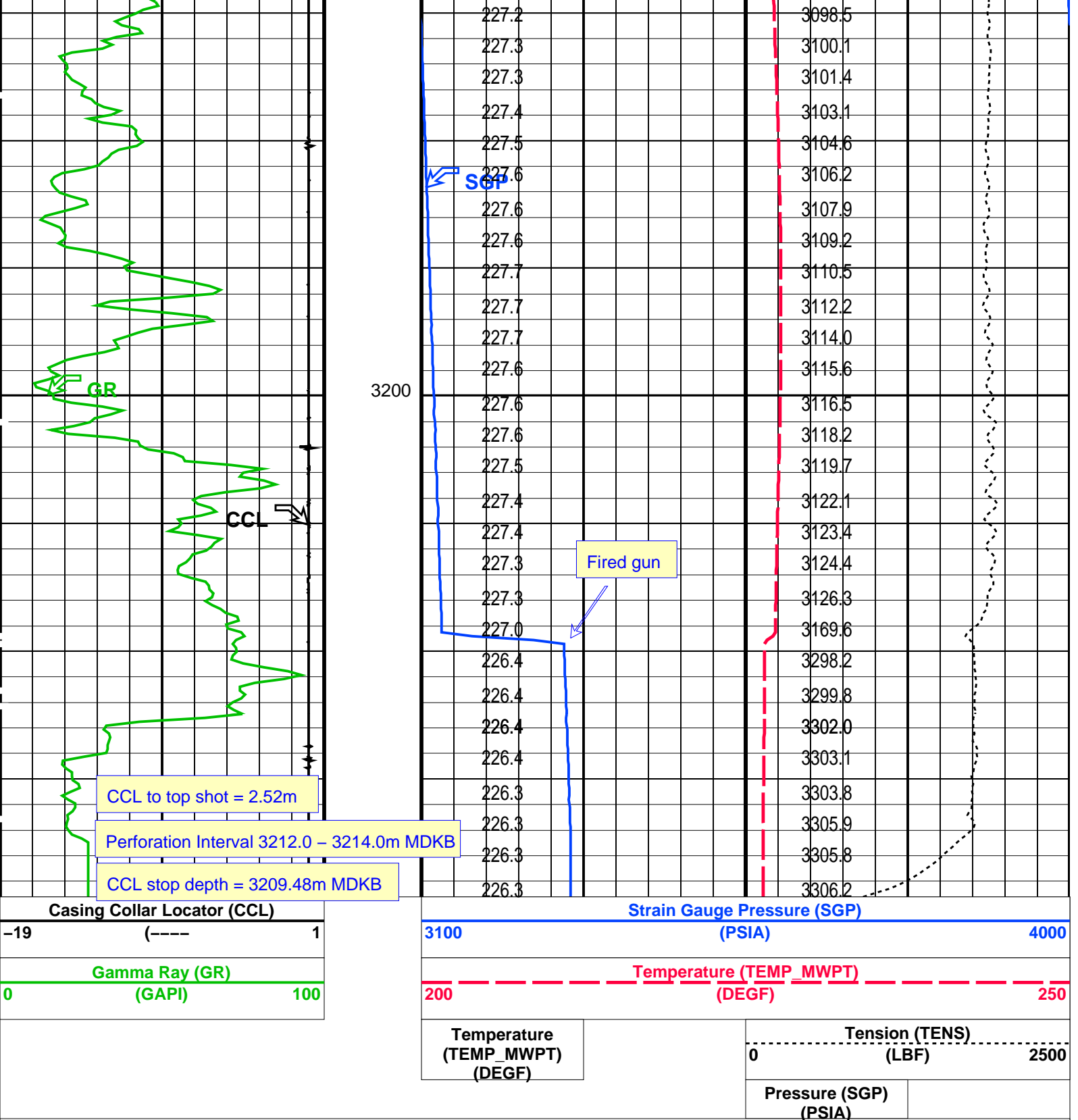
PERFO2 Operational Summary Listing					
Device	Status	Req Depth (M)	Obs Depth (M)	Time Used	
GUN1	Used	3212.0	3212.0	Sun Jan 20 9:05:57 2008	

Company: Esso Australia Pty Ltd.						Well: FTA A4C	
Output DLIS Files							
DEFAULT	PERFO_025LUP	FN:24	PRODUCER	20-Jan-2008 09:07	3219.6 M	3139.9 M	
OP System Version: 15C0-309							
MCM							
MWP_GUN	15C0-309	MWPT-CA		15C0-309			

PIP SUMMARY

Time Mark Every 60 S





PIP SUMMARY

Time Mark Every 60 S

Parameters

DLIS Name

Description

Value

MWPT-CA: MEASUREMENT WHILE PERFORATING TOOL
DEVI_FL_CORR Deviation Angle for Flow Line Correction
FLD Flow Line Density
MWPT_NULL_SOURCE MWPT NULL Temperature Source
MWPT_NULL_TEMP MWPT NULL Temperature

0 DEG
1 G/C3
TEMS
0.0 DEGC

Format: MWP Vertical Scale: 1:200

Graphics File Created: 20-Jan-2008 09:07

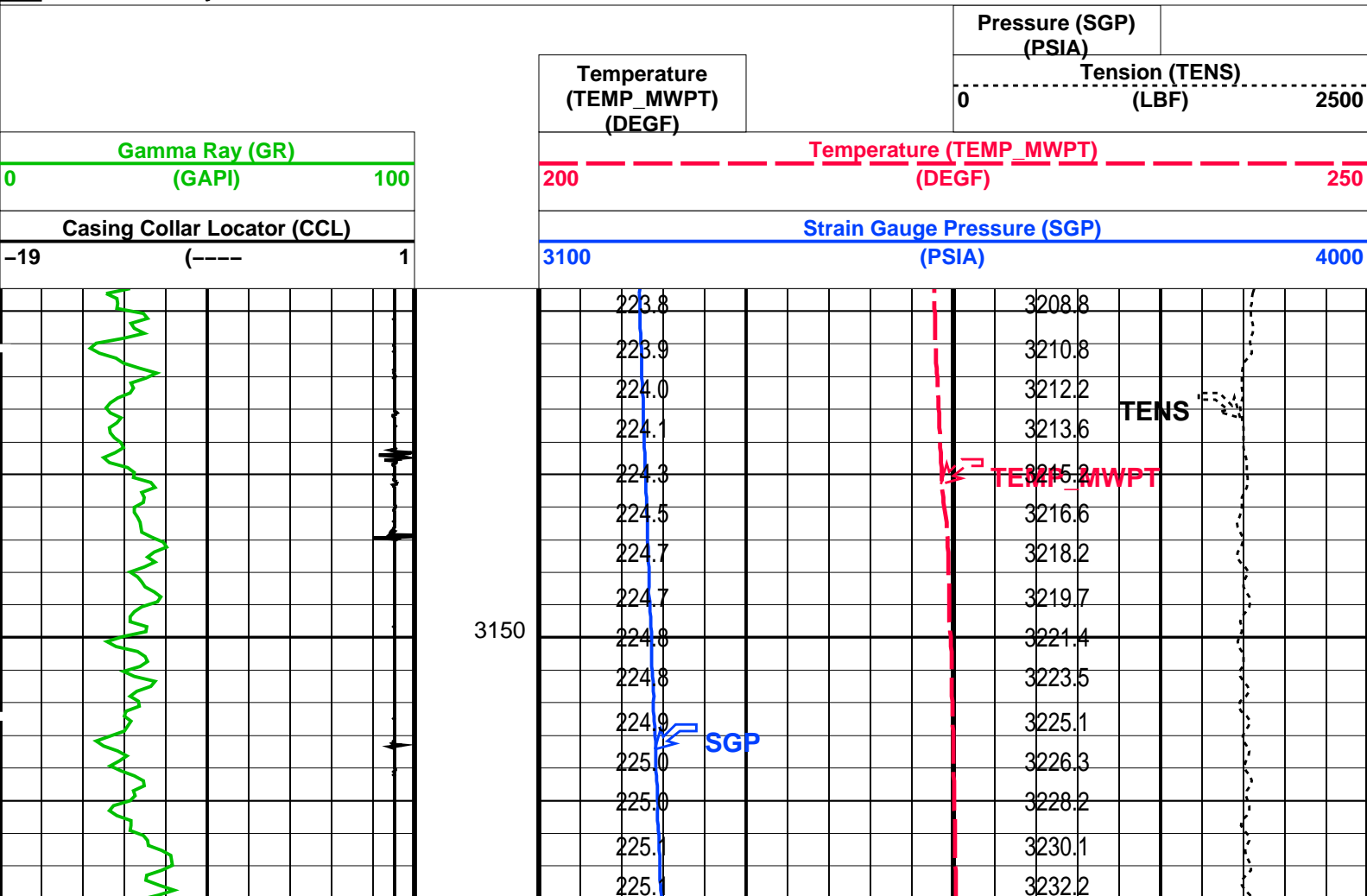
Schlumberger

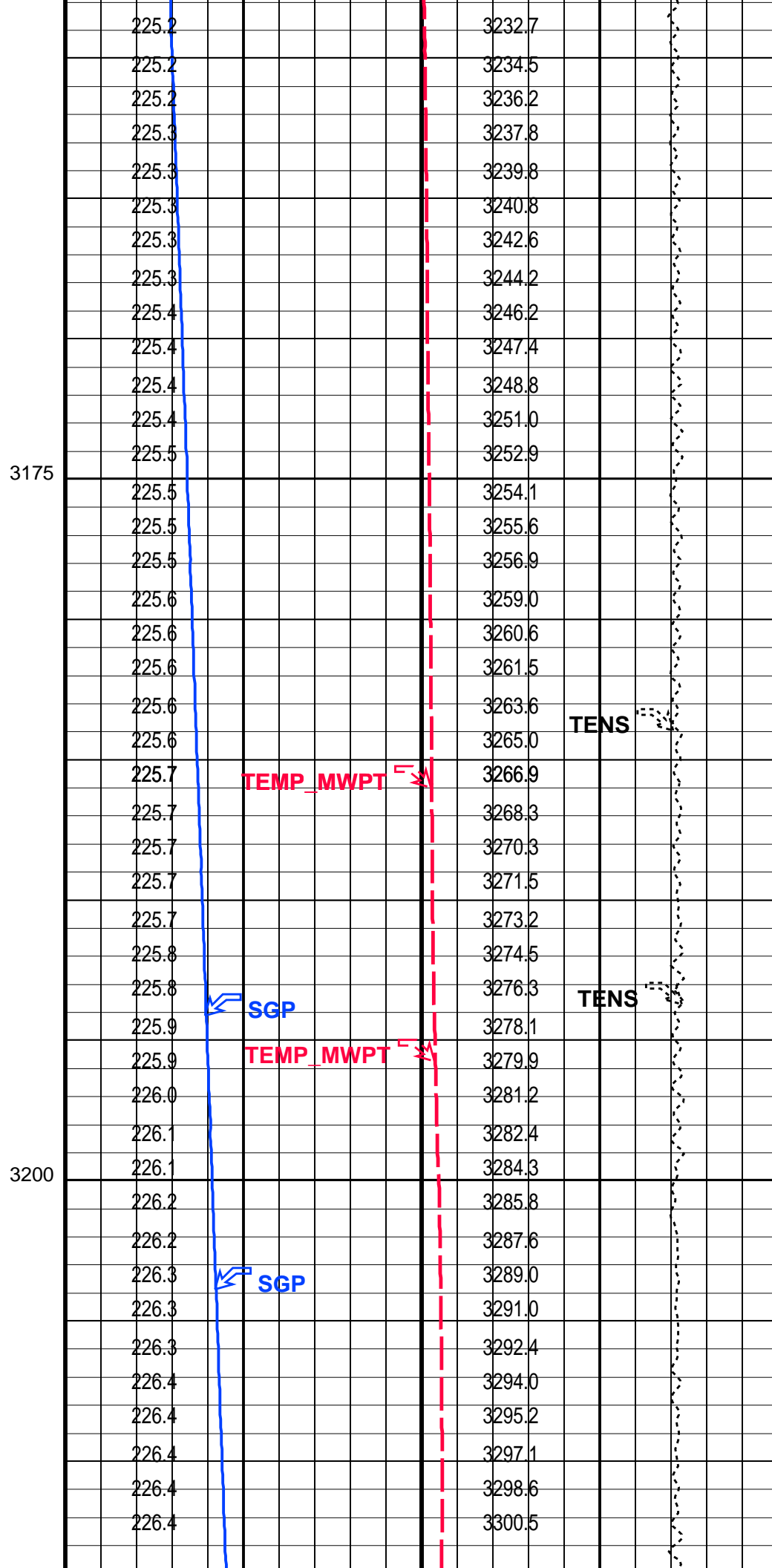
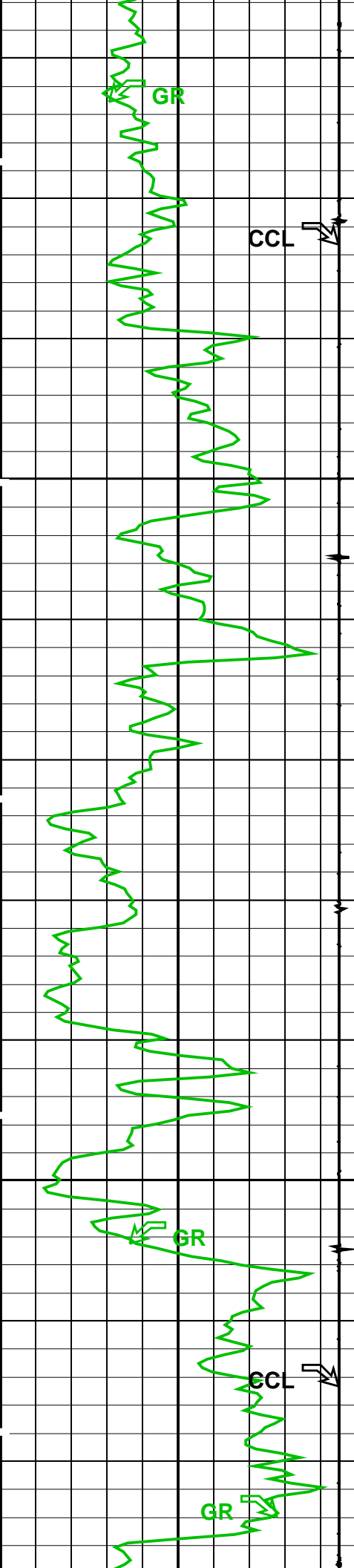
2 1/8" Phased Enerjet
Correlation Pass

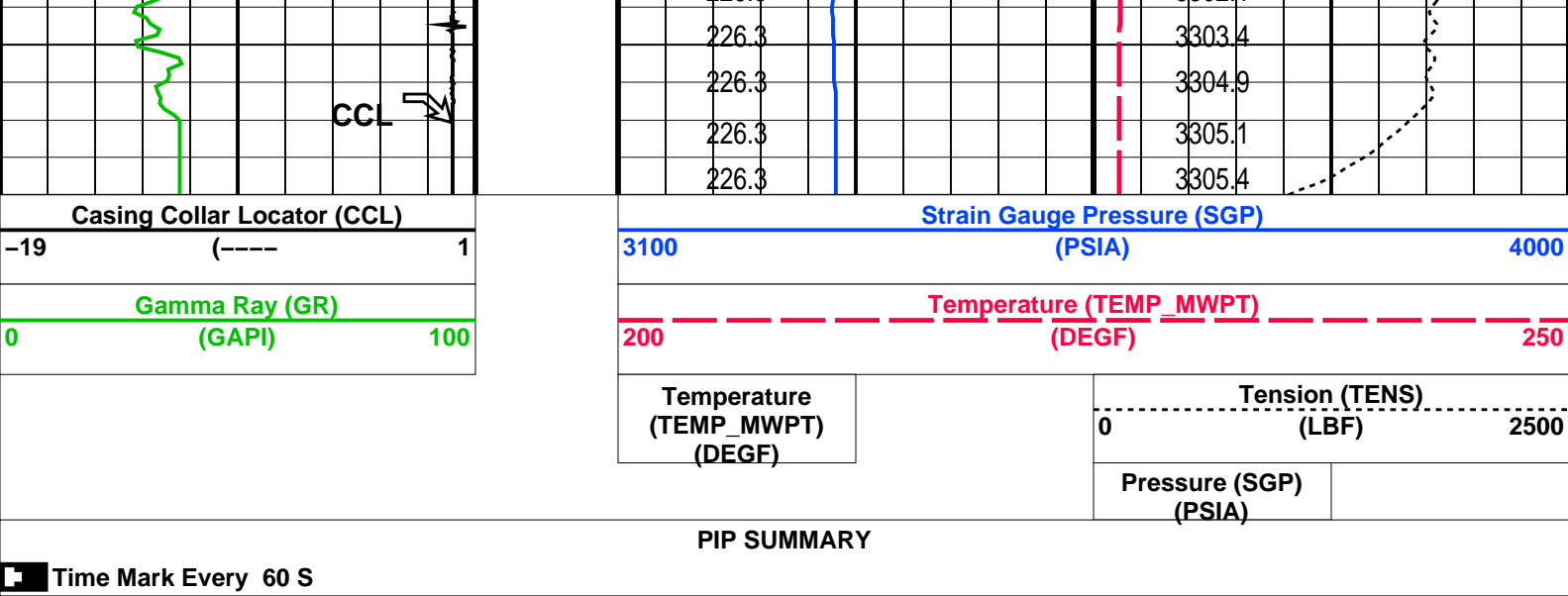
MAXIS Field Log

PIP SUMMARY

Time Mark Every 60 S







Parameters			
DLIS Name	Description	Value	
MWPT-CA: MEASUREMENT WHILE PERFORATING TOOL			
DEVI_FL_CORR	Deviation Angle for Flow Line Correction	0	DEG
FLD	Flow Line Density	1	G/C3
MWPT_NULL_SOURCE	MWPT NULL Temperature Source	TEMS	
MWPT_NULL_TEMP	MWPT NULL Temperature	0.0	DEGC

Format: MWP

Vertical Scale: 1:200

Graphics File Created: 20-Jan-2008 08:56

OP System Version: 15C0-309			
MCM			
MWP_GUN	15C0-309	MWPT-CA	15C0-309
MWGT-AA	15C0-309		

Output DLIS Files			
DEFAULT	PERFO_023LUP	FN:22	PRODUCER 20-Jan-2008 08:56

Company: **Esso Australia Pty Ltd.**

Schlumberger

Well: **FTA A4C**

Field: **Bass Strait**

Platform: **Fortescue**

Country: **Australia**

2 1/8" Phased Enerjet
Perforation Record