

Company: Esso Australia Pty Ltd

Well: BTA A-3W

Field: Barracouta

Rig: ISS SHU

Country: Australia

FPIT & Back-Off
Pipe Recovery Record
19-Sep-2007

Rig: ISS SHU
Field: Barracouta
Location: Gippsland
Well: BTA A-3W
Company: Esso Australia Pty Ltd

LOCATION	
Gippsland	Elev.: K.B. 55.9 m
Basin	G.L. -45.7 m
Bass Strait	D.F. 55.9 m
Permanent Datum:	MSL
Log Measured From:	DF
Drilling Measured From:	DF

State: Victoria	Max. Well Deviation 1 deg	Longitude 147° 40' 29" E	Latitude 38° 17' 53" S
-----------------	------------------------------	-----------------------------	---------------------------

Logging Date	19-Sep-2007								
Run Number	1								
Depth Driller	3212 m								
Schlumberger Depth	1077 m								
Bottom Log Interval	1074 m								
Top Log Interval	602 m								
Casing Fluid Type	Brine								
Salinity									
Density	8.55 lbm/gal								
Fluid Level	0 m								
BIT/CASING/TUBING STRING									
Bit Size	12.250 in								
From	797.02 m								
To	3212 m								
Casing/Tubing Size	7.000 in								
Weight	29 lbm/ft								
Grade	L-80								
From	33.5 m								
To	3171 m								
Maximum Recorded Temperatures									
Logger On Bottom	19-Sep-2007		Time			19:15			
Unit Number	3827	Location	AUSL						
Recorded By	C.Rowand, A.Sword								
Witnessed By	Mr M.Wilson / R.Schuback								

PVT DATA				Run 1	Run 2	Run
Oil Density						
Water Salinity						
Gas Gravity						
Bo						
Bw						
1/Bg						
Bubble Point Pressure						
Bubble Point Temperature						
Solution GOR						
Maximum Deviation	1 deg					
CEMENTING DATA						
Primary/Squeeze	Primary					
Casing String No						
Lead Cement Type						
Volume						
Density						
Water Loss						
Additives						
Tail Cement Type						
Volume						
Density						
Water Loss						
Additives						
Expected Cement Top						
Logging Date						
Run Number						
Depth Driller						
Schlumberger Depth						
Bottom Log Interval						
Top Log Interval						
Casing Fluid Type						
Salinity						
Density						
Fluid Level						
BIT/CASING/TUBING STRING						
Bit Size						
From						
To						
Casing/Tubing Size						
Weight						
Grade						
From						
To						
Maximum Recorded Temperatures						
Logger On Bottom						
Unit Number						
Recorded By						
Witnessed By						

DEPTH SUMMARY LISTING

Depth System Equipment

Depth Measuring Device		Tension Device		Logging Cable	
Type:	IDW-H	Type:	CMTD-B/A	Type:	7-46V-XS
Serial Number:	794	Serial Number:	1711	Serial Number:	71260
Calibration Date:	20-Mar-2007	Calibration Date:	28-Aug-2007	Length:	5089.86 M
Calibrator Serial Number:	1009	Calibrator Serial Number:	1173		
Calibration Cable Type:	7-46V-XS	Calibration Gain:	0.91	Conveyance Method:	Wireline
Wheel Correction 1:	-5	Calibration Offset:	-437.00	Rig Type:	Offshore_Fixed
Wheel Correction 2:	-4				

Depth Control Parameters

Log Sequence:	Subsequent Log In the Well
Reference Log Name:	Drillers In-hole Pipe Tally
Reference Log Run Number:	
Reference Log Date:	

Depth Control Remarks

1. Log correlated to Drillers In-hole Pipe Tally
- 2.
- 3.
- 4.
- 5.
- 6.

DISCLAIMER

THE USE OF AND RELIANCE UPON THIS RECORDED-DATA BY THE HEREIN NAMED COMPANY (AND ANY OF ITS AFFILIATES, PARTNERS, REPRESENTATIVES, AGENTS, CONSULTANTS AND EMPLOYEES) IS SUBJECT TO THE TERMS AND CONDITIONS AGREED UPON BETWEEN SCHLUMBERGER AND THE COMPANY, INCLUDING: (a) RESTRICTIONS ON USE OF THE RECORDED-DATA; (b) DISCLAIMERS AND WAIVERS OF WARRANTIES AND REPRESENTATIONS REGARDING COMPANY'S USE OF AND RELIANCE UPON THE RECORDED-DATA; AND (c) CUSTOMER'S FULL AND SOLE RESPONSIBILITY FOR ANY INFERENCE DRAWN OR DECISION MADE IN CONNECTION WITH THE USE OF THIS RECORDED-DATA.

OTHER SERVICES1	OTHER SERVICES2
OS1: DD-CH	OS1:
OS2:	OS2:
OS3:	OS3:
OS4:	OS4:
OS5:	OS5:

REMARKS: RUN NUMBER 1

Log correlated to Drillers In-hole Pipe Tally

Objective: to find the stuck 3-1/2" Drillpipe free point and then Back-Off

FPIT Stations at 602, 746, 1075 and 1065 M.

Due to problems hanging up while RIH with FPIT, a 1-11/16" drift run was made

prior to R/H with the Back-Off Shot.

Back-Off Shot was fired at the top of the 17th HWDP joint at 1051.5 M



The SAFF system was utilised

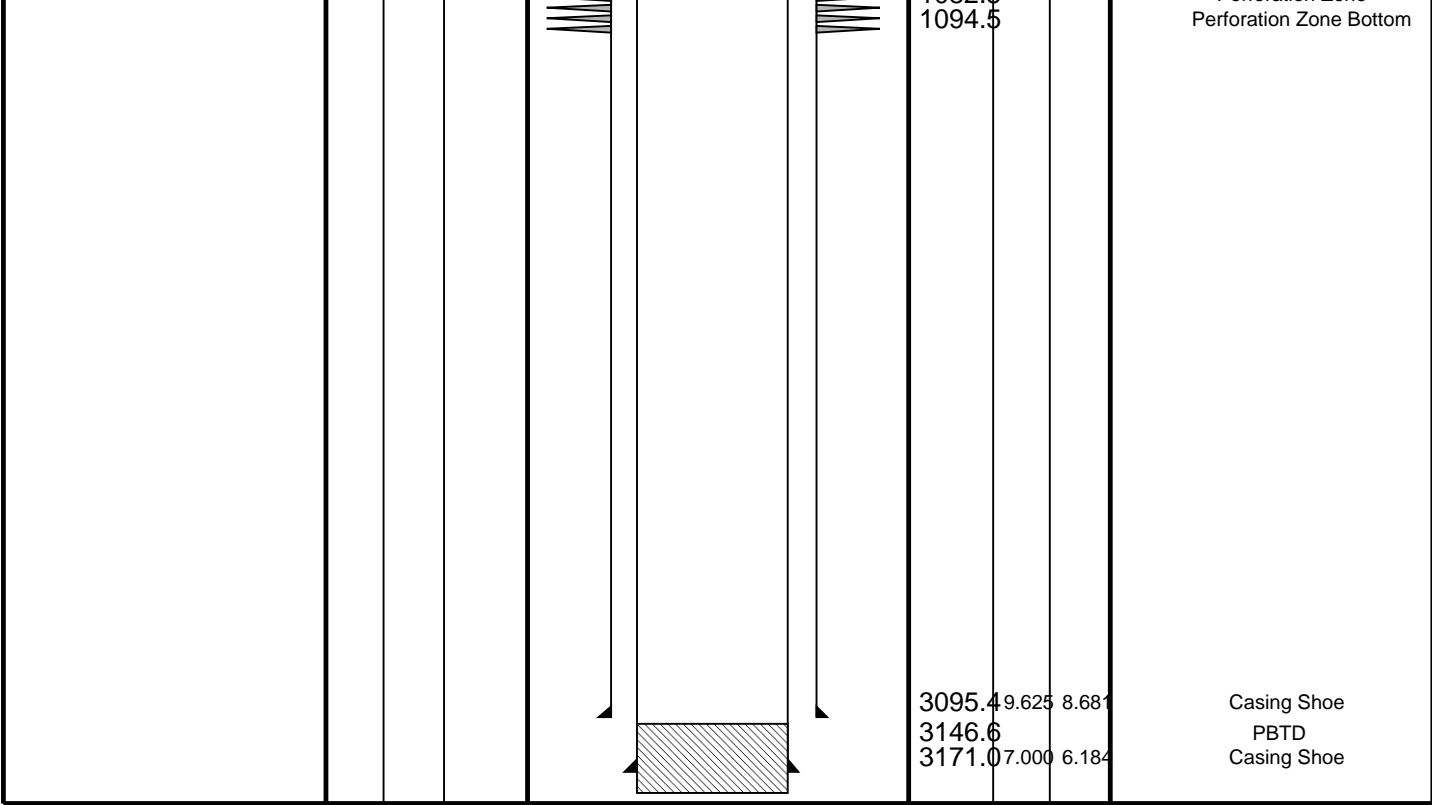
Back-Off Bar was made with 5 strands.

RUN 1 SERVICE ORDER #: PROGRAM VERSION: 15C0-309 FLUID LEVEL: 0 m			RUN 2 SERVICE ORDER #: PROGRAM VERSION: FLUID LEVEL:		
LOGGED INTERVAL	START	STOP	LOGGED INTERVAL	START	STOP

[illegible]

RUN 1		RUN 2	
FPIM-A 719	SURFACE EQUIPMENT	WITM (SHM)	SURFACE EQUIPMENT

DOWNHOLE EQUIPMENT		DOWNHOLE EQUIPMENT	
FPIT-D PEH-L 719 FPIC-A 785 FPIH-A 785 FPIS-B 8001 BN		3.48	MH-22 MH-22
			
			AH-38
			EQF-43 EQF-43 201
			3.76
			3.28
			3.20



Schlumberger

**Back Off
Record**

MAXIS Field Log

PERFO2 Operational Summary Listing

Device	Status	Req Depth (M)	Obs Depth (M)	Time Used
Back Off	Used	1051.5	1051.5	Thu Sep 20 03:39:47 2007

Company: Esso Australia Pty Ltd

Well: BTA A-3W

Input DLIS Files

DEFAULT PERFO_138LUP FN:137 PRODUCER 20-Sep-2007 04:34 1064.2 M 1003.4 M

Output DLIS Files

OP System Version: 15C0-309

MCM

SHM_GUN

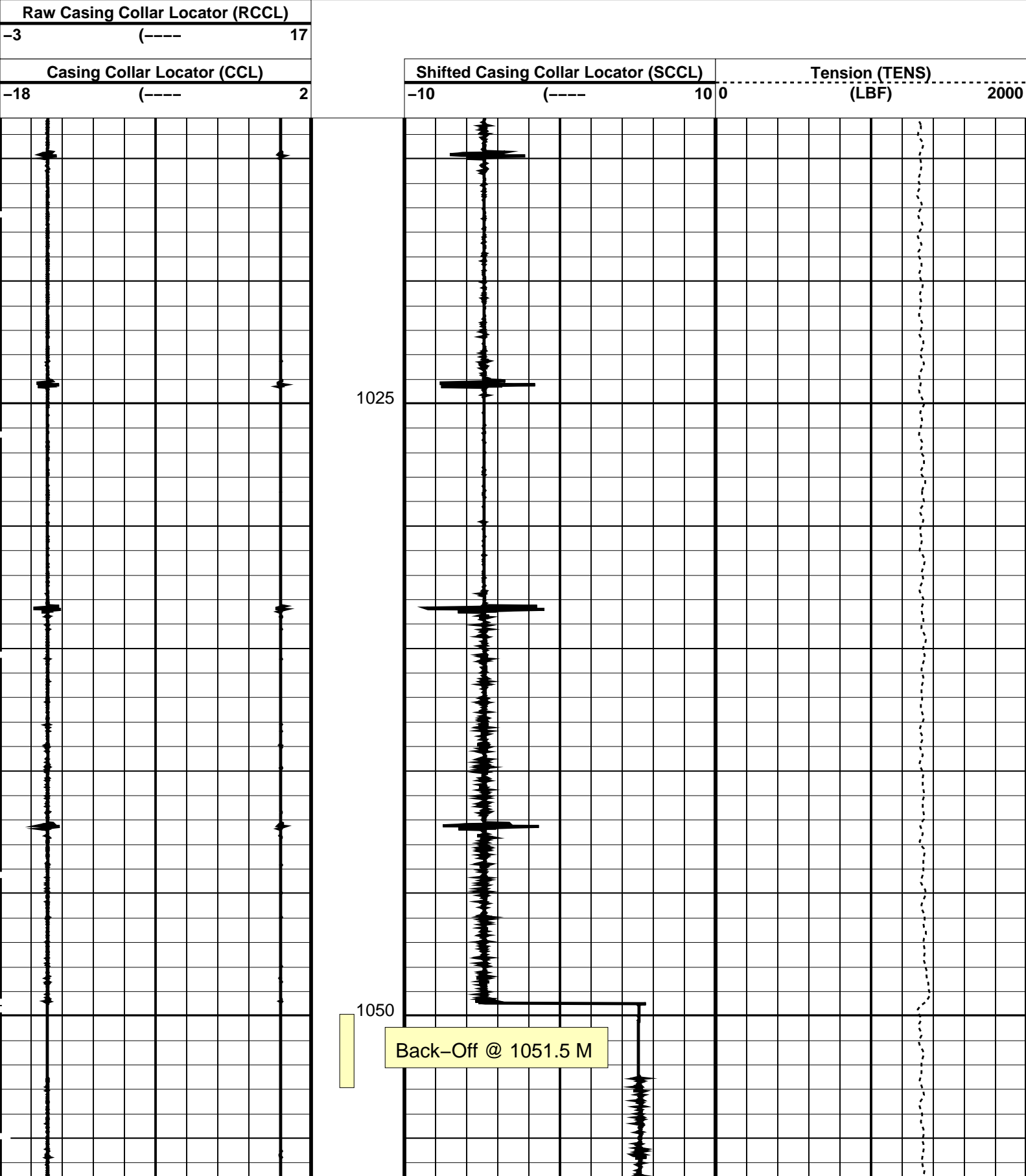
SRPC-3474-Q4_2007

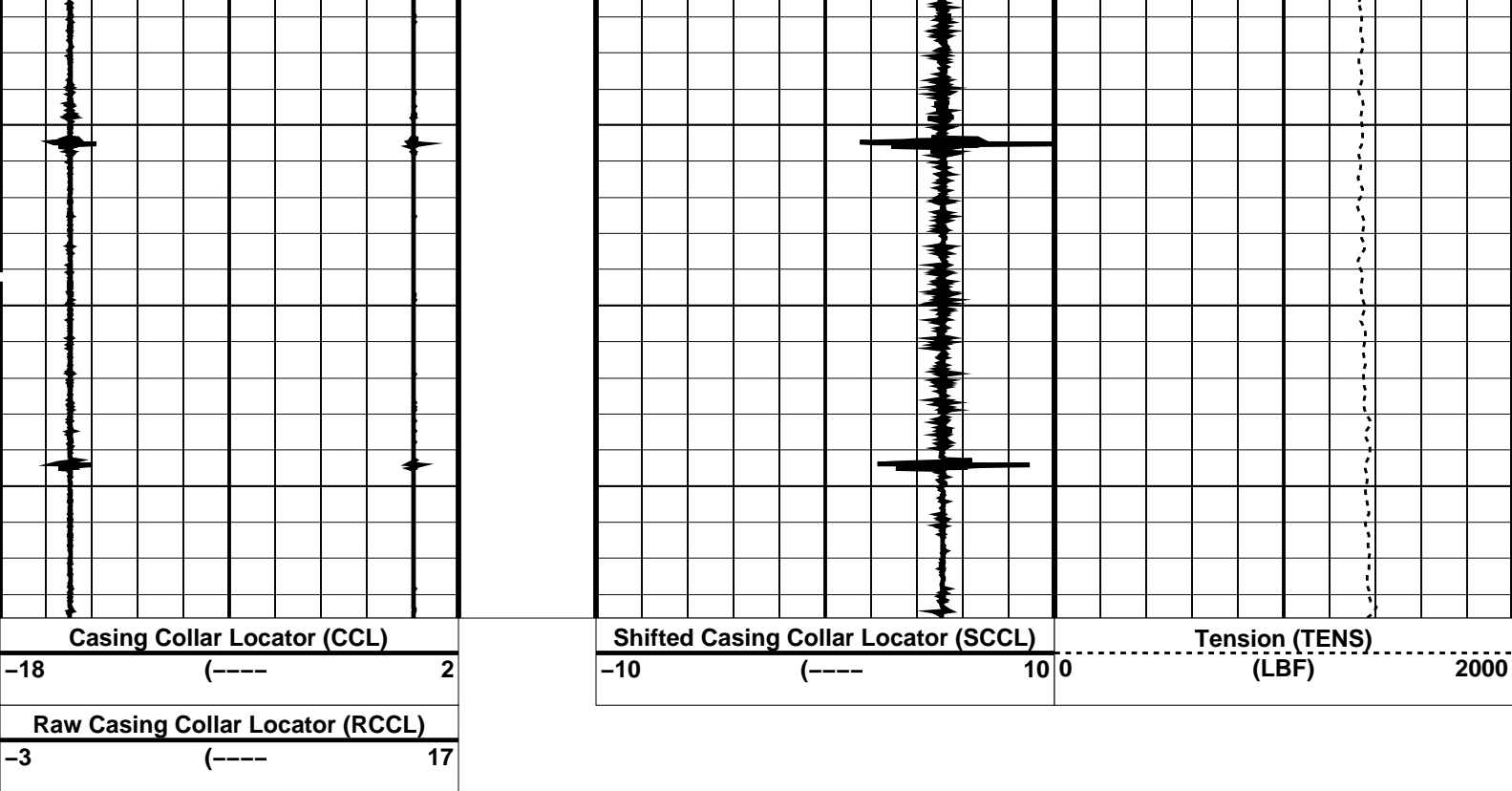
UPCT-A

15C0-309

PIP SUMMARY

Time Mark Every 60 S





PIP SUMMARY

 Time Mark Every 60 S

Parameters

DLIS Name	Description	Value
DO	System and Miscellaneous	
PP	Depth Offset for Playback Playback Processing	9.5 M RECOMPUTE

Format: CORRELATION Vertical Scale: 1:200 Graphics File Created: 22-Nov-2007 17:37

OP System Version: 15C0-309
MCM

SHM_GUN SRPC-3474-Q4_2007 UPCT-A 15C0-309

Input DLIS Files

DEFAULT PERFO_138LUP FN:137 PRODUCER 20-Sep-2007 04:34 1064.2 M 1003.4 M

Output DLIS Files

DEFAULT PERFO_138PUP FN:152 PRODUCER 22-Nov-2007 17:37

Schlumberger

Back Off
Correlation

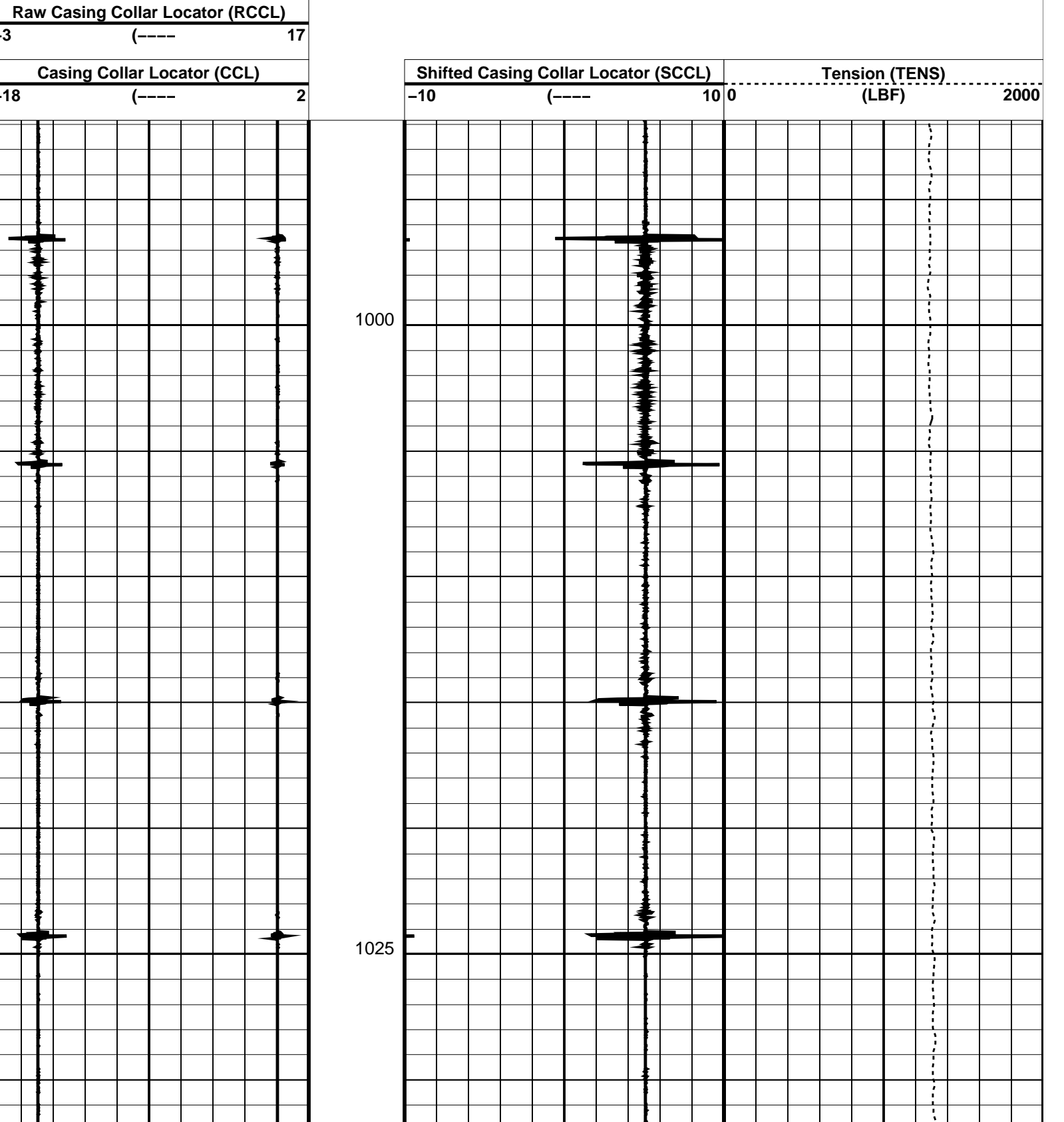
MAXIS Field Log

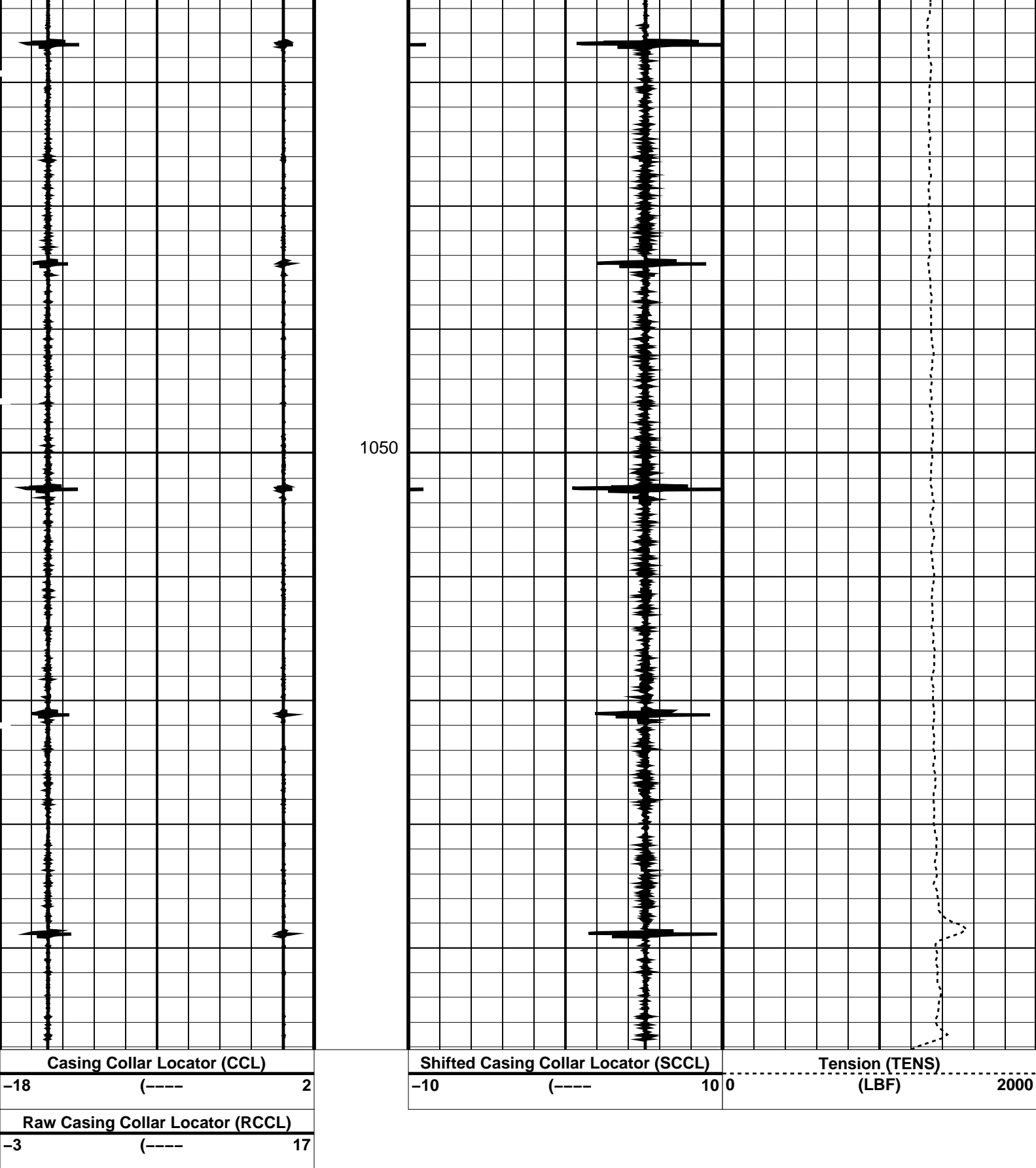
Output DLIS Files

OP System Version: 15C0-309
MCM

PIP SUMMARY

 Time Mark Every 60 S





PIP SUMMARY

Time Mark Every 60 S

Parameters		
DLIS Name	Description	Value
System and Miscellaneous		
DO	Depth Offset for Playback	9.5 M
PP	Playback Processing	RECOMPUTE

OP System Version: 15C0-309
MCM

SHM_GUN	SRPC-3474-Q4_2007	UPCT-A	15C0-309
Input DLIS Files			
DEFAULT	PERFO_137LUP	FN:136 PRODUCER	20-Sep-2007 03:55 1064.7 M 981.9 M

Output DLIS Files			
DEFAULT	PERFO_137PUP	FN:151 PRODUCER	22-Nov-2007 17:35



Drift Run
Correlation

MAXIS Field Log

Company: Esso Australia Pty Ltd Well: BTA A-3W

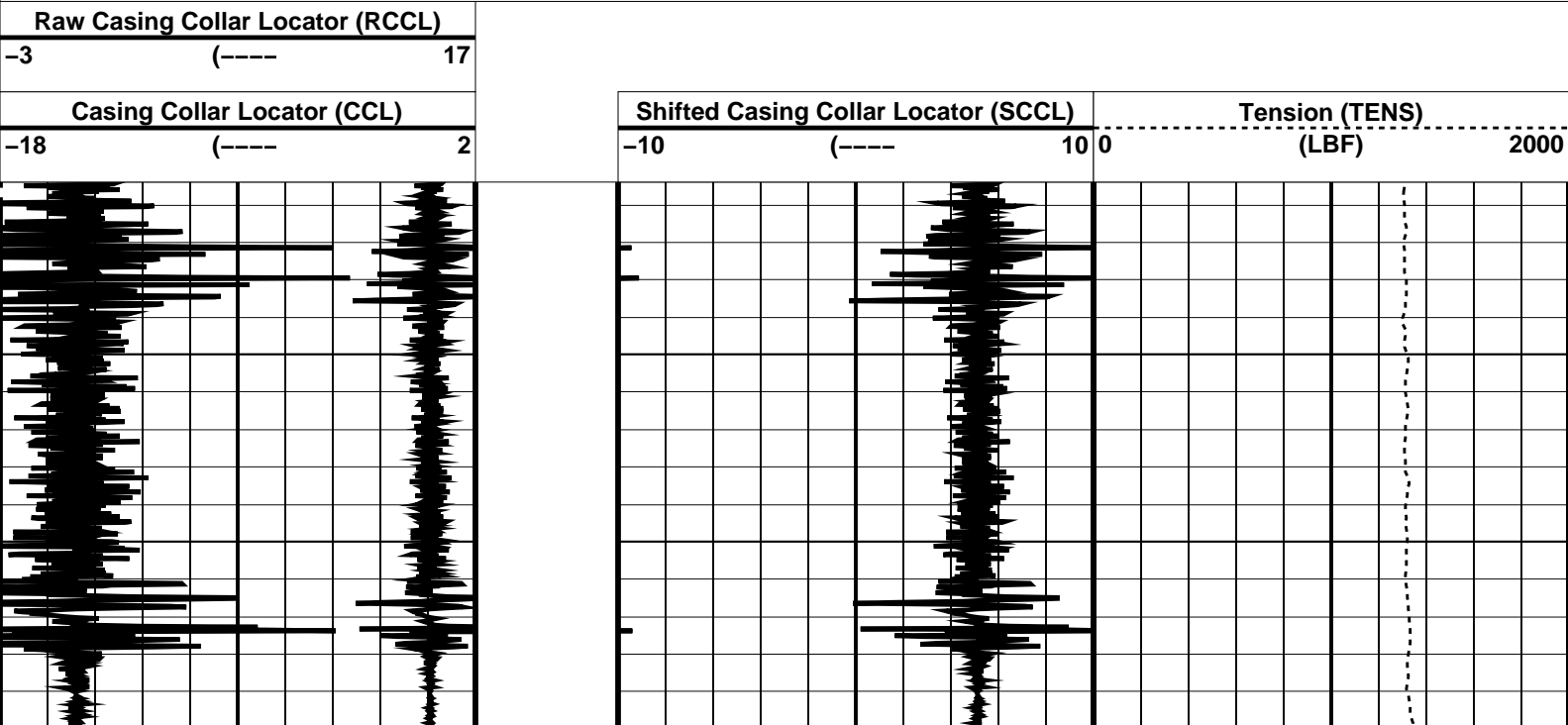
Input DLIS Files			
DEFAULT	PERFO_132LUP	FN:131 PRODUCER	20-Sep-2007 00:34 1068.0 M 2.1 M
Output DLIS Files			
DEFAULT	PERFO_132PUP	FN:150 PRODUCER	22-Nov-2007 17:34 1080.1 M 975.4 M

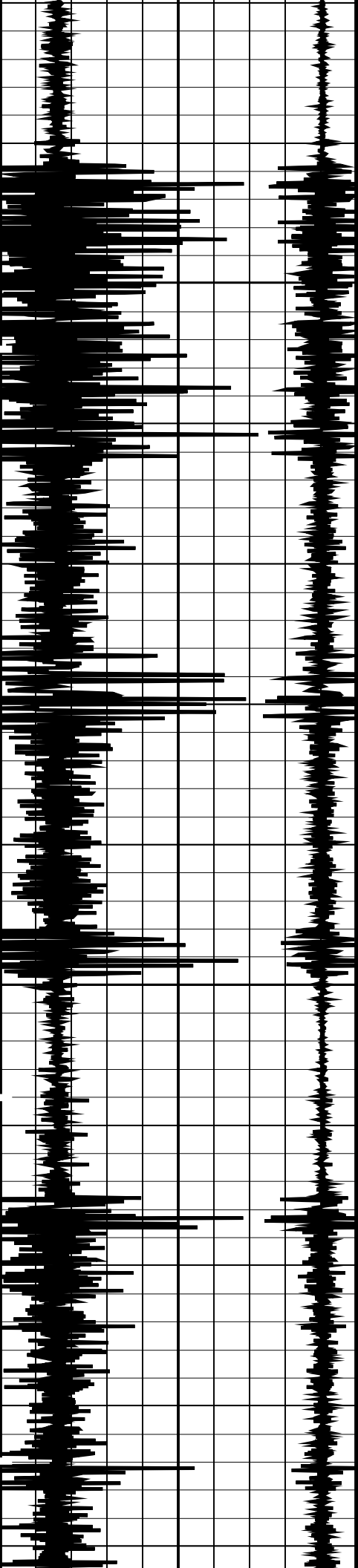
OP System Version: 15C0-309
MCM

SHM_GUN	SRPC-3474-Q4_2007	UPCT-A	15C0-309
---------	-------------------	--------	----------

PIP SUMMARY

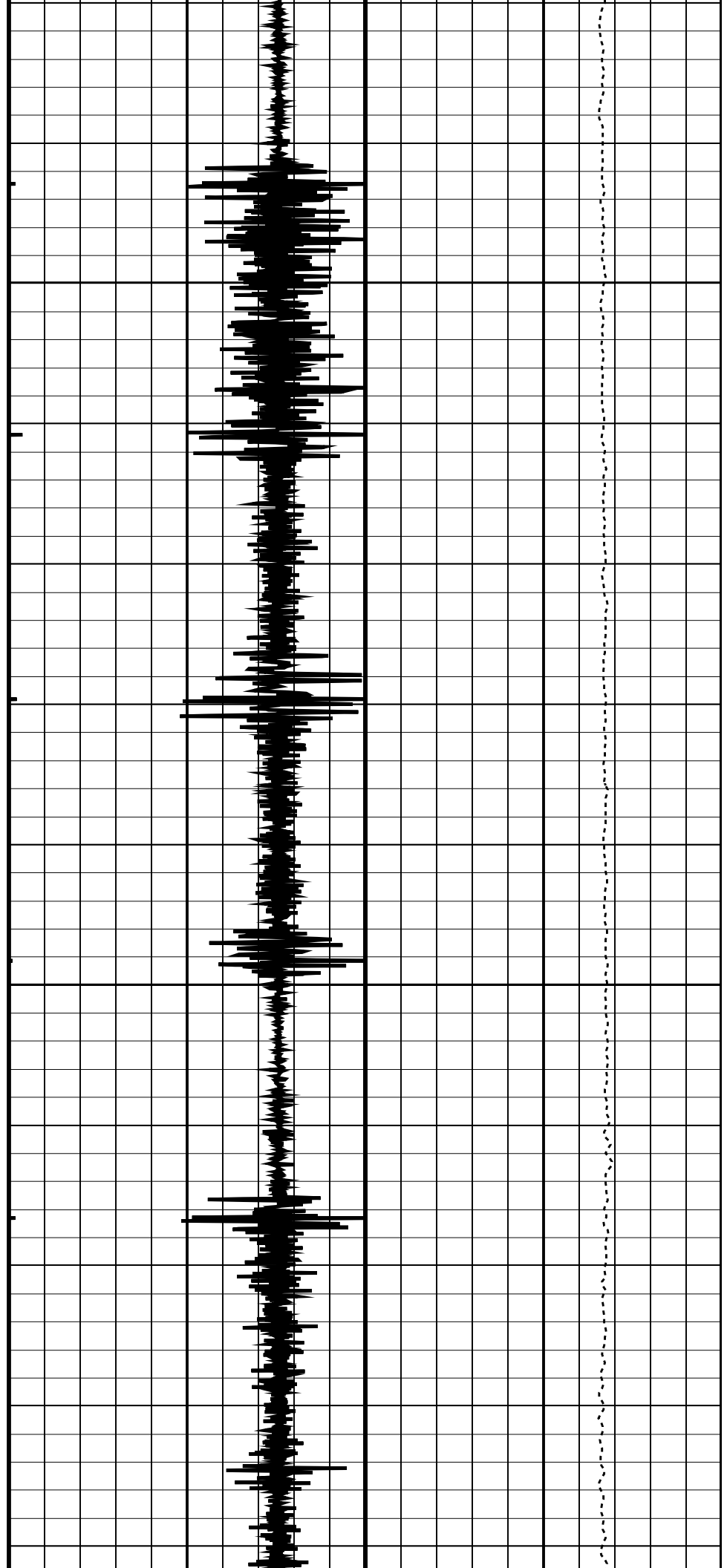
☒ Time Mark Every 60 S

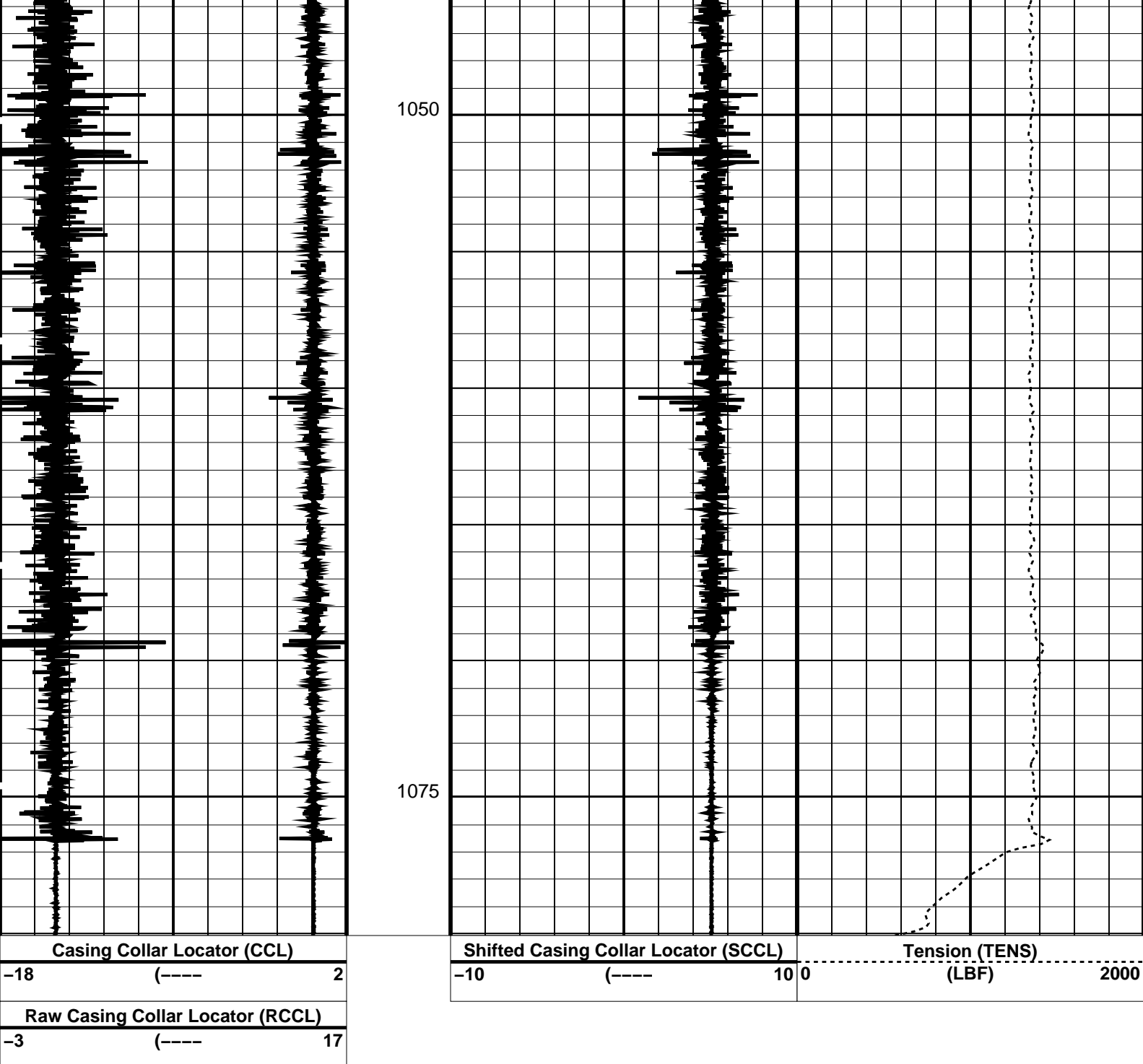




1000

1025





PIP SUMMARY

☒ Time Mark Every 60 S

Parameters

DLIS Name	Description	Value
DO	System and Miscellaneous	
PP	Depth Offset for Playback	12.0 M
	Playback Processing	RECOMPUTE

Format: CORRELATION Vertical Scale: 1:200 Graphics File Created: 22-Nov-2007 17:34

OP System Version: 15C0-309

MCM

SHM_GUN SRPC-3474-Q4_2007 UPCT-A 15C0-309

Input DLIS Files

DEFAULT PERFO_132LUP FN:131 PRODUCER 20-Sep-2007 00:34 1068.0 M 2.1 M

Output DLIS Files

DEFAULT

PERFO_132PUP

FN:150

PRODUCER

22-Nov-2007 17:34

Schlumberger

FPIT Correlation

MAXIS Field Log

Company: Esso Australia Pty Ltd

Well: BTA A-3W

Input DLIS Files

DEFAULT

FPIT_122LUP

FN:121

PRODUCER

19-Sep-2007 21:02

1078.5 M

13.1 M

Output DLIS Files

DEFAULT

FPIT_122PUP

FN:155

PRODUCER

22-Nov-2007 17:47

1078.5 M

975.4 M

OP System Version: 15C0-309

MCM

FPIT-D

15C0-309

PIP SUMMARY

 Time Mark Every 60 S

CCL Amplitude
(CCL)

-10000 (---- 30000

CCL Amplitude (CCL)

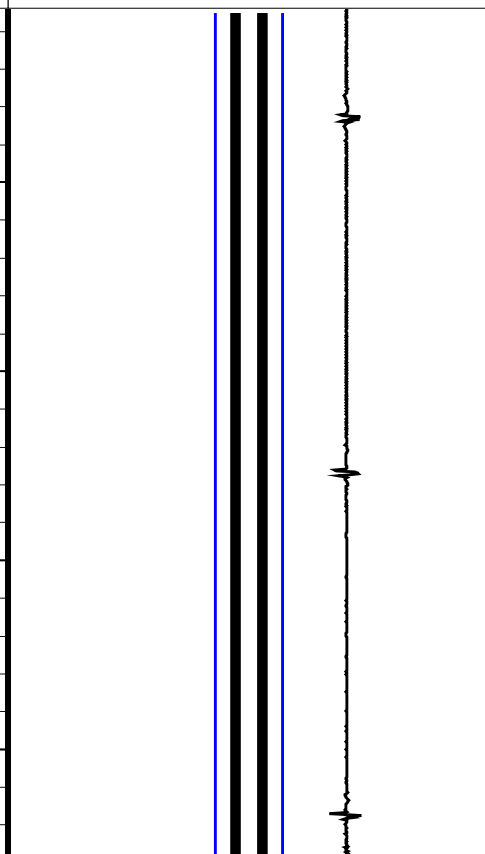
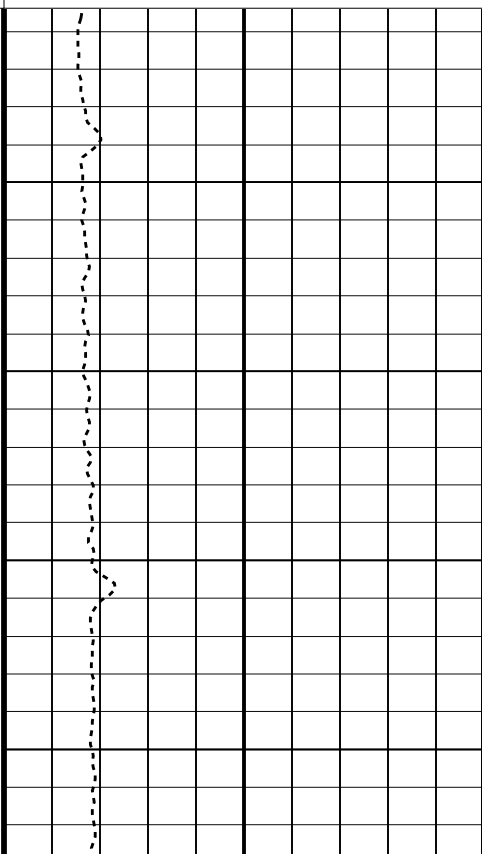
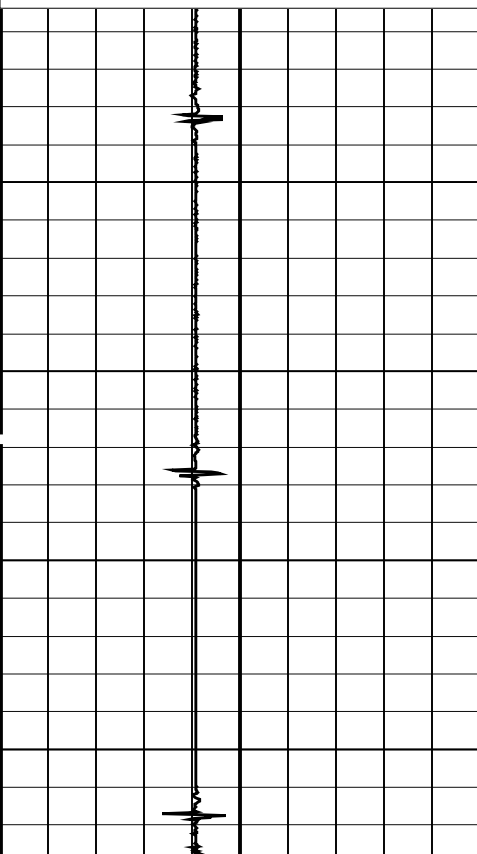
-10000 (---- 30000

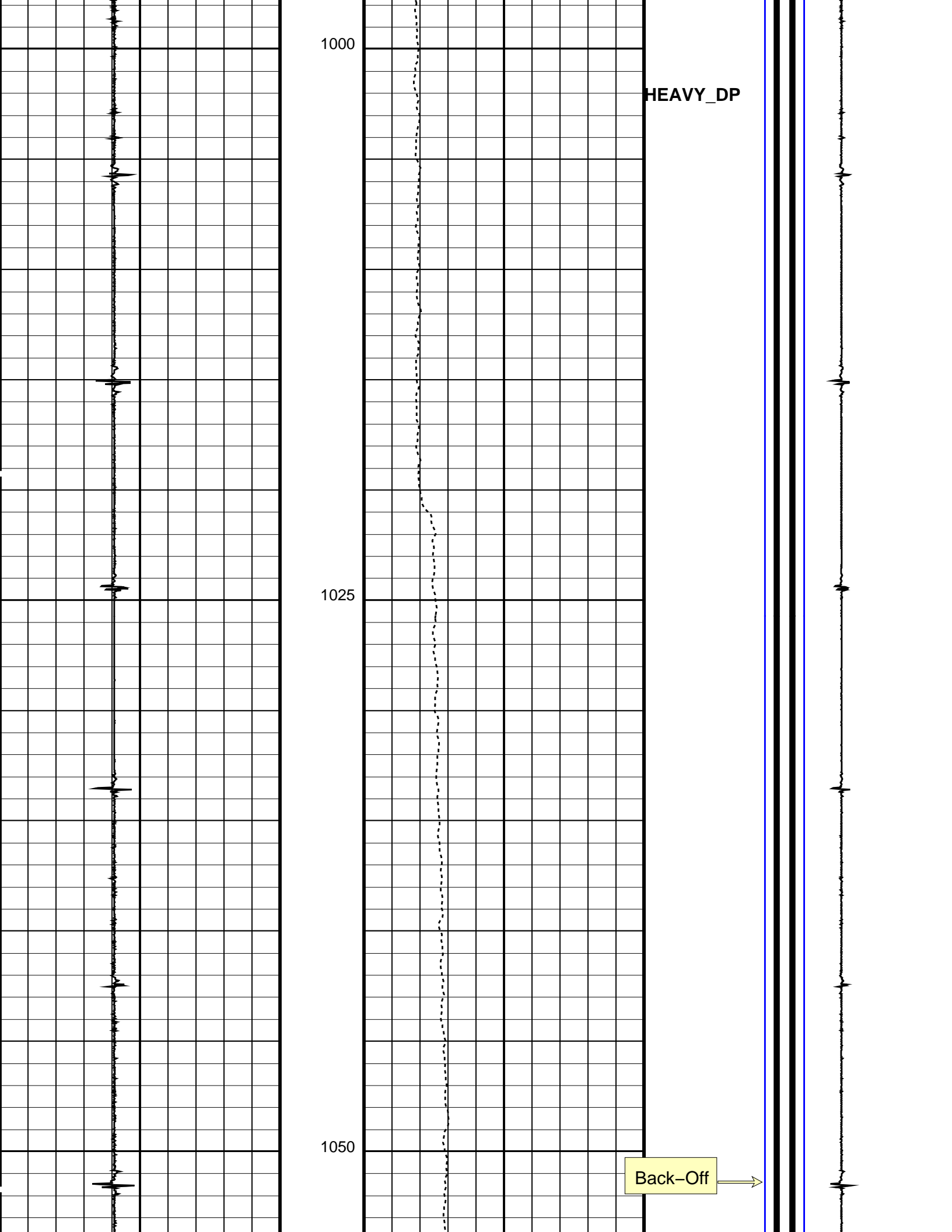
Tension (TENS)

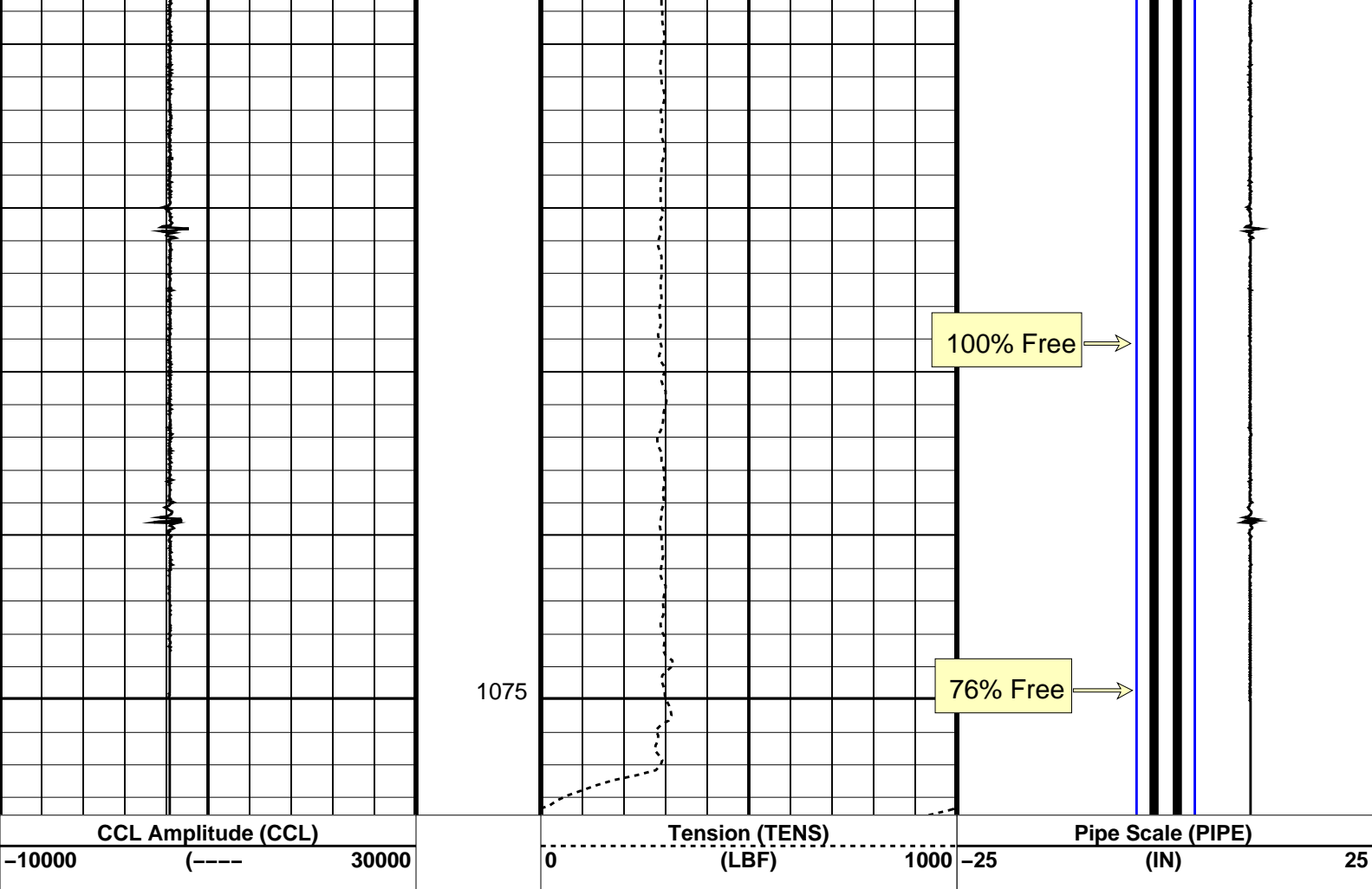
0 (LBF) 1000

Pipe Scale (PIPE)

-25 (IN) 25







CCL Amplitude (CCL)
-10000 (----) 30000

PIP SUMMARY

Time Mark Every 60 S

Format: FPITA/D_DepthLog

Vertical Scale: 1:200

Graphics File Created: 22-Nov-2007 17:47

OP System Version: 15C0-309
MCM

FPIT-D 15C0-309

Input DLIS Files

DEFAULT	FPIT_122LUP	FN:121	PRODUCER	19-Sep-2007 21:02	1078.5 M	13.1 M
---------	-------------	--------	----------	-------------------	----------	--------

Output DLIS Files

DEFAULT	FPIT_122PUP	FN:155	PRODUCER	22-Nov-2007 17:47
---------	-------------	--------	----------	-------------------

Schlumberger

**FPIT Station
Summary**

MAXIS Field Log

FPIT Station Summary Table

#	Station Depth (M)	Element Type	Linear Weight (KG/M)	STRETCH				TORQUE			
				OverPull (MTON)	Stretch (USTR)	day/time	%Free (%)	Turn	Torque (R/KF)	day/time	%Free (%)
5	745.03	DRILL_PIPE	19.79	11.40	228.12	19/17:03	98.17	---	---	---	---
7	1064.11	HEAVY_DP	37.50	11.40	155.28	19/19:58	100.00	---	---	---	---
6	1074.75	HEAVY_DP	37.50	11.40	101.88	19/19:16	76.02	1.50	0.26	19/19:42	76.46

Graphics File Name: FPIT_SS.PDS

Graphics File Created: 22-Nov-2007 16:07

Schlumberger

Before Survey Calibration

MAXIS Field Log

Calibration and Check Summary

Measurement	Nominal	Master	Before	After	Change	Limit	Units
-------------	---------	--------	--------	-------	--------	-------	-------

Free Point Indicator Tool Wellsite Calibration – Stretch and Torque Calibration

Before: 19-Sep-2007 12:11

Stretch Test Jig Gain	1.000	N/A	1.106	N/A	N/A	N/A	
Torque Test Jig Gain	1.000	N/A	0.9939	N/A	N/A	N/A	

Free Point Indicator Tool / Equipment Identification

Primary Equipment:

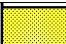

Free Point Indicator Sonde	FPIS – B
Free Point Indicator Cartridge	FPIC – B

Auxiliary Equipment:

Free Point Indicator Housing	FPIH – A
------------------------------	----------

Free Point Indicator Tool Wellsite Calibration

Stretch and Torque Calibration

Phase	Stretch Test Jig Gain	Value	Phase	Torque Test Jig Gain	Value
Before		1.106	Before		0.9939
	0.7500 (Minimum)	1.000 (Nominal)		0.7500 (Minimum)	1.000 (Nominal)
		1.250 (Maximum)			1.250 (Maximum)

Before: 19-Sep-2007 12:11

Company: **Esso Australia Pty Ltd**

Schlumberger

Well: **BTA A-3W**
Field: **Barracouta**
Rig: **ISS SHU**
Country: **Australia**

FPIT & Back-Off
Pipe Recovery Record
19-Sep-2007