

[illegible]

Company: Esso Australia Pty Ltd.

Well: W-28

Field: West Kingfish

Rig : Prod4 / Ausl

Country: Australia

2" Powerjet Omega HSD
Mwpt Perforation Record
7" Mpbp Plug Setting Record

Field: West Kingfish
Location: Gippsland
Well: W-28
Company: Esso Australia Pty Ltd.

LOCATION

Gippsland
Basin
Bass Strait
Permanent Datum: M.S.L.
Log Measured From: D.F.
Drilling Measured From: D.F.
Elev.: 0.00 m
G.L. -76.13 m
D.F. 33.43 m
above Perm. Datum

State: Victoria
Max. Well Deviation 62 deg
Longitude 148 06'15.1"E
Latitude 038 35'40.7"S

Logging Date

Run Number

Depth Driller

Schlumberger Depth

Bottom Log Interval

Top Log Interval

Casing Fluid Type

Salinity

Density

Fluid Level

BIT/CASING/TUBING STRING

Bit Size

From

To

Casing/Tubing Size

Weight

Grade

From

To

Maximum Recorded Temperatures

Logger On Bottom

Unit Number

Recorded By

Witnessed By

PVT DATA

Oil Density
Water Salinity
Gas Gravity
Bo
Bw
1/Bg
Bubble Point Pressure
Bubble Point Temperature
Solution GOR
Maximum Deviation
CEMENTING DATA
Primary/Squeeze
Casing String No
Lead Cement Type
Volume
Density
Water Loss
Additives
Tail Cement Type
Volume
Density
Water Loss
Additives
Expected Cement Top

Run 1

62 deg

Primary

Logging Date

Run Number

Depth Driller

Schlumberger Depth

Bottom Log Interval

Top Log Interval

Casing Fluid Type

Salinity

Density

Fluid Level

BIT/CASING/TUBING STRING

Bit Size

From

To

Casing/Tubing Size

Weight

Grade

From

To

Maximum Recorded Temperatures

Logger On Bottom

Unit Number

Recorded By

Witnessed By

DEPTH SUMMARY LISTING

Depth System Equipment

Depth Measuring Device		Tension Device		Logging Cable	
Type:	IDW-EB	Type:	PSDS/OSDS	Type:	2-32ZT
Serial Number:	6373	Serial Number:	325357	Serial Number:	208196
Calibration Date:	04-Jan-2007	Calibration Date:	04-Nov-2008	Length:	4100 M
Calibrator Serial Number:	9	Calibrator Serial Number:	1174	Conveyance Method: Wireline Rig Type: Rigless	
Calibration Cable Type:	2-32ZT	Calibration Gain:	0.90		
Wheel Correction 1:	-2	Calibration Offset:	-115.00		
Wheel Correction 2:	-4				

Depth Control Parameters

Log Sequence:	Subsequent Log In the Well
Reference Log Name:	
Reference Log Run Number:	1
Reference Log Date:	.

Depth Control Remarks

1. IDW-EB 6373 used as primary depth control.
2. Z-Chart as back-up.

DISCLAIMER

THE USE OF AND RELIANCE UPON THIS RECORDED-DATA BY THE HEREIN NAMED COMPANY (AND ANY OF ITS AFFILIATES, PARTNERS, REPRESENTATIVES, AGENTS, CONSULTANTS AND EMPLOYEES) IS SUBJECT TO THE TERMS AND CONDITIONS AGREED UPON BETWEEN SCHLUMBERGER AND THE COMPANY, INCLUDING: (a) RESTRICTIONS ON USE OF THE RECORDED-DATA; (b) DISCLAIMERS AND WAIVERS OF WARRANTIES AND REPRESENTATIONS REGARDING COMPANY'S USE OF AND RELIANCE UPON THE RECORDED-DATA; AND (c) CUSTOMER'S FULL AND SOLE RESPONSIBILITY FOR ANY INFERENCE DRAWN OR DECISION MADE IN CONNECTION WITH THE USE OF THIS RECORDED-DATA.

OTHER SERVICES1
OS1: None

REMARKS: RUN NUMBER 1	
Log correlated to Petrophysical Analysis composite supplied with program.	
Maximum well deviation = 62 degree's at 950m MDKB.	
This well perforated with 2" HSD Powerjet Omega charges	
at 6 spf,60 degree phasing,Interval= 3714m to 3719m MDKB.	
HUD: 3738m MDKB.	
Gun # 1	
Top Shot @3714 m MDKB	Before Gun SBHT: 222 degf SBHP : 3120: psia
CCL to Top Shot =3.5 m	After Gun SBHT: 225 degf SBHP: 3120 : psia

Plug # 1
Top of Seal @ 3730m MDKB
CCL to Top of Seal = 7 m
CCL Stop Depth = 3723 m MDKB
Estimated HUD = 3728.5m MDKB.
Crew : J Light,C Shiells.

	RUN 1	
SERVICE ORDER #:		Ausl08602245/6/
PROGRAM VERSION:		16C0-147
FLUID LEVEL:		392 m

LOGGED INTERVAL	START	STOP

RUN 1

RUN 2

SURFACE EQUIPMENT

SURFACE EQUIPMENT

MWPM-AA 3008

MPBM 081

DOWNHOLE EQUIPMENT

DOWNHOLE EQUIPMENT

Item	Value	Item	Value
AH-SWBS-B 789	14.77	AH-SWBS-B 785	13.84
AH-SWBS-B 788	14.08	AH-SWBS-B 786	13.15
AH-SWBS-B 787	13.40	AH-SWBS-B 787	12.47
AH-SWBS-B 786	12.71	AH-SWBS-B 788	11.78
AH-SWBS-B 785	12.03	AH-SWBS-B 789	11.10
MH-SWHS-A 759	11.34	MH-SWHA-A 759	10.41
AH-124 7002	11.01	CCL-L 823	10.07
MWPG-AA 24	10.91	MPSU-CA	9.61
MWGH-AA 19			
MWPH-AA 11	9.93		
MWPS-AA 94			
WPSA-B 12	7.11		
ESIC 4007395	6.53		

2" Powerjet Omega HSD Gun 1

6.10

MWP_GUN

TOOL BOTTOM

0.00

MAXIMUM STRING DIAMETER 2.13 IN
MEASUREMENTS RELATIVE TO TOOL ZERO
ALL LENGTHS IN METERS

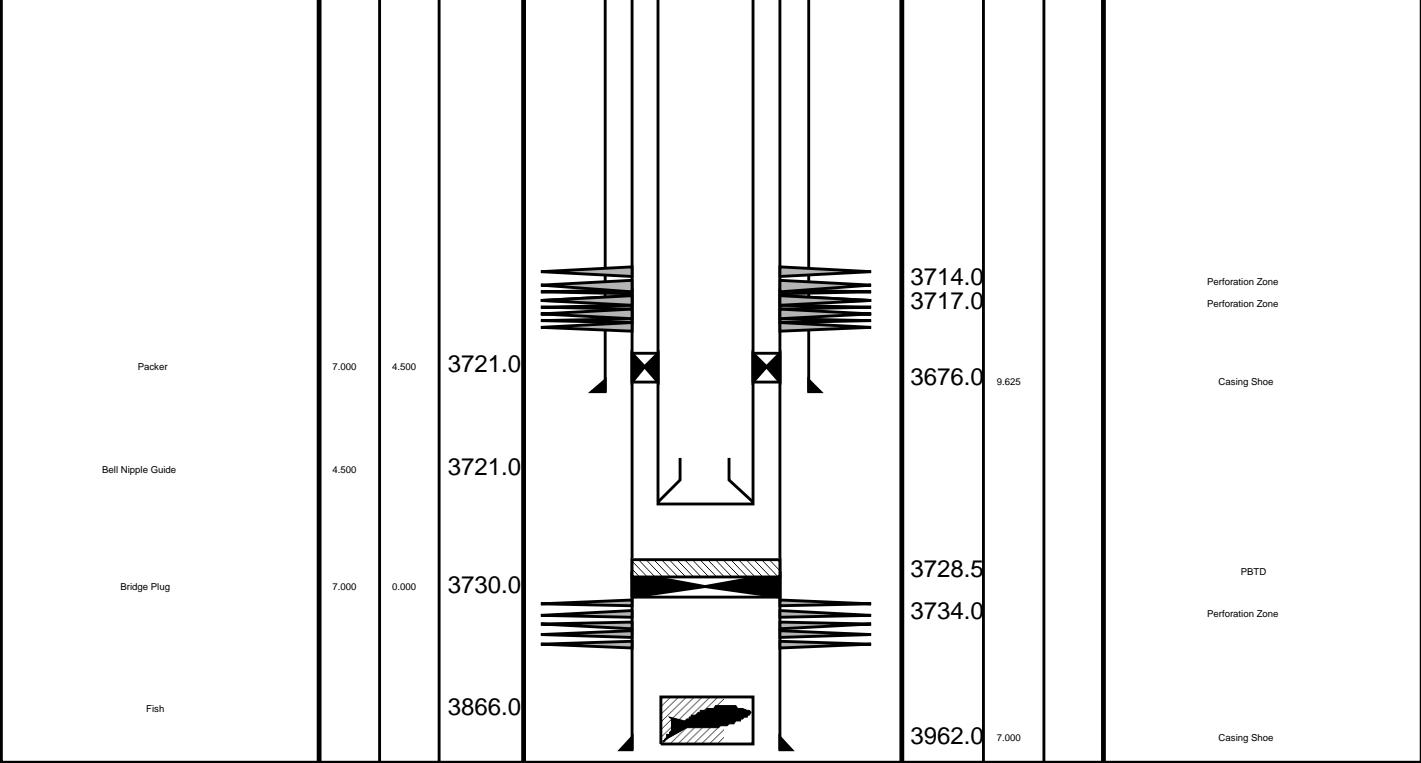
MPEX-DA 7" 38 lb/ft Posiset Plug

3.20

TOOL BOTTOM

MAXIMUM STRING DIAMETER 2.13 IN
MEASUREMENTS RELATIVE TO TOOL ZERO
ALL LENGTHS IN METERS

Production String	(m)		MD	Well Schematic	(m)			Casing String
	OD	ID			MD	OD	ID	
Tubing Tubing Hanger	4.500 9.625	4.500	9.0		12.5 11.5	9.625 13.375	9.625	Casing String Liner Hanger
Shutin Valve	4.500		453.0		1204.0	13.375		Casing Shoe
Gas Lift Mandrel	4.500		841.0					
Gas Lift Mandrel	4.500		1406.0					
Gas Lift Mandrel	4.500		1588.0					
Nipple	4.500		1604.0					
Nipple	4.500		3506.0		3542.0	7.000		Casing String
Packer	7.000	4.500	3543.0		3542.0	9.625	7.000	Liner Hanger



Job Event Summary

MAXIS Field Log

Schlumberger Job Event Summary

	Time	Elapsed Time	Depth (M)	File
Simulated Log	11-Nov-2008 7:42	000:03		PERFO_016LUP
Log Pass (down)	11-Nov-2008 9:47	000:35	1086.8 - 3741.1	PERFO_018LDP
Log Pass (up)	11-Nov-2008 10:22	000:06	3741.1 - 3691.9	PERFO_019LUP
Log Pass (up)	11-Nov-2008 10:42	000:11	3741.7 - 3695.4	PERFO_024LUP
Log Pass (up)	11-Nov-2008 11:40	000:06	3735.0 - 3708.2	PERFO_026LUP
Log Pass (up)	11-Nov-2008 11:47	000:06	3730.9 - 3708.2	PERFO_027LUP
Log Pass (up)	11-Nov-2008 11:56	000:34	3732.9 - 3684.7	PERFO_028LUP
Station Log	11-Nov-2008 12:19	000:07	3710.5 - 1.0	PERFO_029LTP
Log Pass (down)	11-Nov-2008 13:59	001:29	54.4 - 3751.6	PERFO_031LDP
Log Pass (up)	11-Nov-2008 15:28	000:11	3752.2 - 3669.0	PERFO_032LUP
Log Pass (up)	11-Nov-2008 16:25	000:12	2240.3 - 1253.3	PERFO_034LUP
Log Pass (up)	11-Nov-2008 16:46	000:04	61.0 - -5.3	PERFO_035LUP
Simulated Log	12-Nov-2008 6:45	000:02		MPBT_036LUP
Log Pass (down)	12-Nov-2008 7:30	001:22	-4.7 - 3715.2	MPBT_038LDP
Log Pass (up)	12-Nov-2008 8:52	000:03	3715.4 - 3695.7	MPBT_039LUP
Log Pass (up)	12-Nov-2008 8:57	000:02	3716.1 - 3711.7	MPBT_040LUP
Log Pass (up)	12-Nov-2008 9:01	000:04	3730.8 - 3719.6	MPBT_041LUP

Simulated Log	12-Nov-2008	9:08	000:45			MPBT_042LUP
Simulated Log	12-Nov-2008	9:57	000:00			MPBT_043LUP
Log Pass (up)	12-Nov-2008	9:58	000:05	3723.0	- 3670.9	MPBT_044LUP
Log Pass (up)	12-Nov-2008	10:06	000:58	3642.8	- -10.4	MPBT_045LUP
Log Pass (down)	12-Nov-2008	13:10	000:40	-4.1	- 3718.0	PERFO_047LDP
Log Pass (up)	12-Nov-2008	13:51	000:01	3717.6	- 3713.7	PERFO_048LUP
Log Pass (up)	12-Nov-2008	13:52	000:04	3720.2	- 3668.4	PERFO_049LUP
Log Pass (up)	12-Nov-2008	14:20	000:23	1930.9	- -11.6	PERFO_051LUP
Log Pass (down)	12-Nov-2008	15:05	000:41	-0.2	- 3720.4	PERFO_052LDP
Log Pass (up)	12-Nov-2008	15:46	000:05	3720.8	- 3656.2	PERFO_053LUP
Log Pass (up)	12-Nov-2008	16:39	000:26	2081.8	- -11.3	PERFO_055LUP



Cement Dump Pass

MAXIS Field Log

Input DLIS Files

DEFAULT PERFO_053LUP FN:52 PRODUCER 12-Nov-2008 15:46 3720.8 M 3656.2 M

Output DLIS Files

DEFAULT PERFO_054PUP FN:53 PRODUCER 12-Nov-2008 15:52 3721.5 M 3656.8 M

OP System Version: 16C0-147

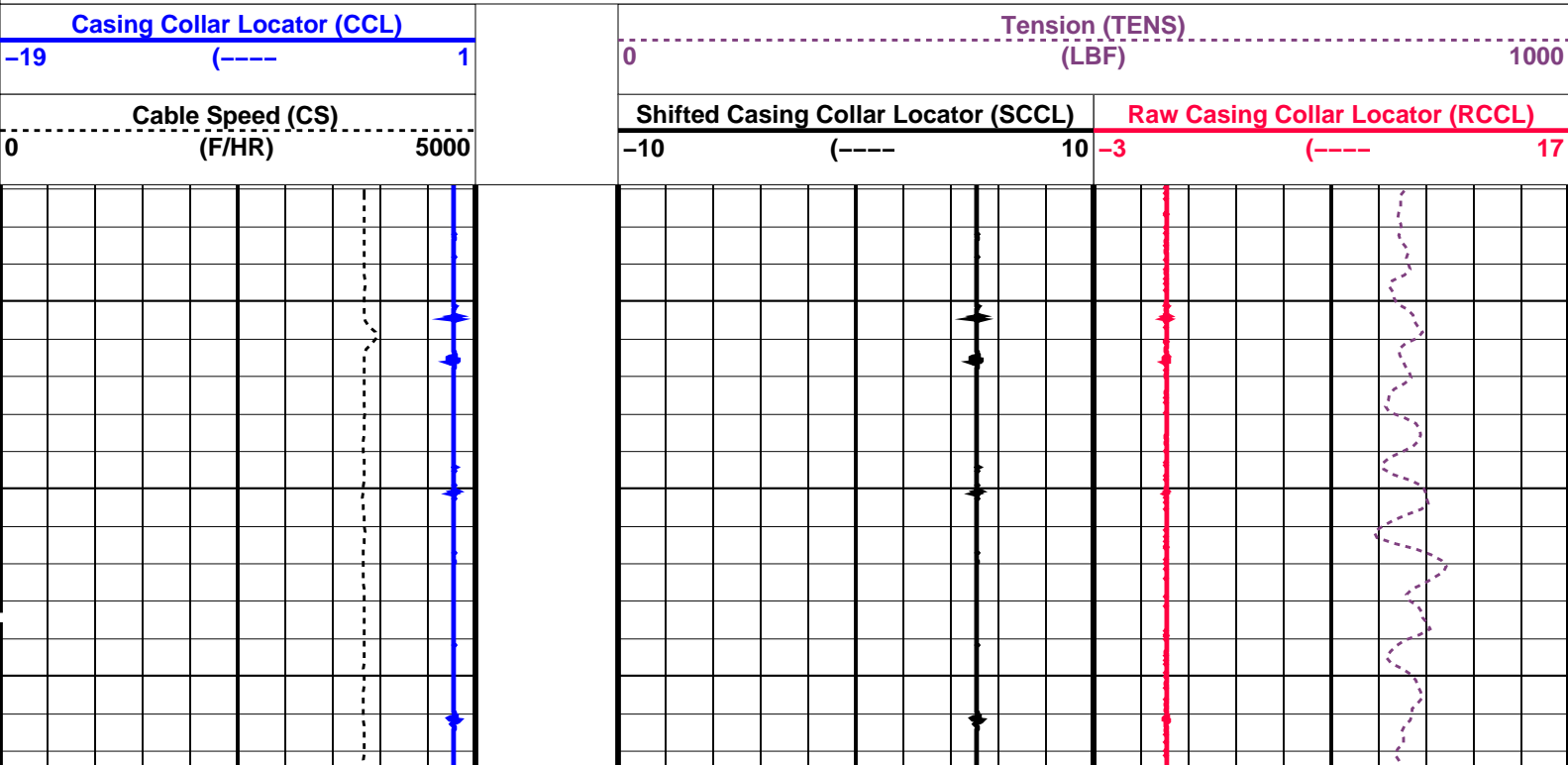
MCM

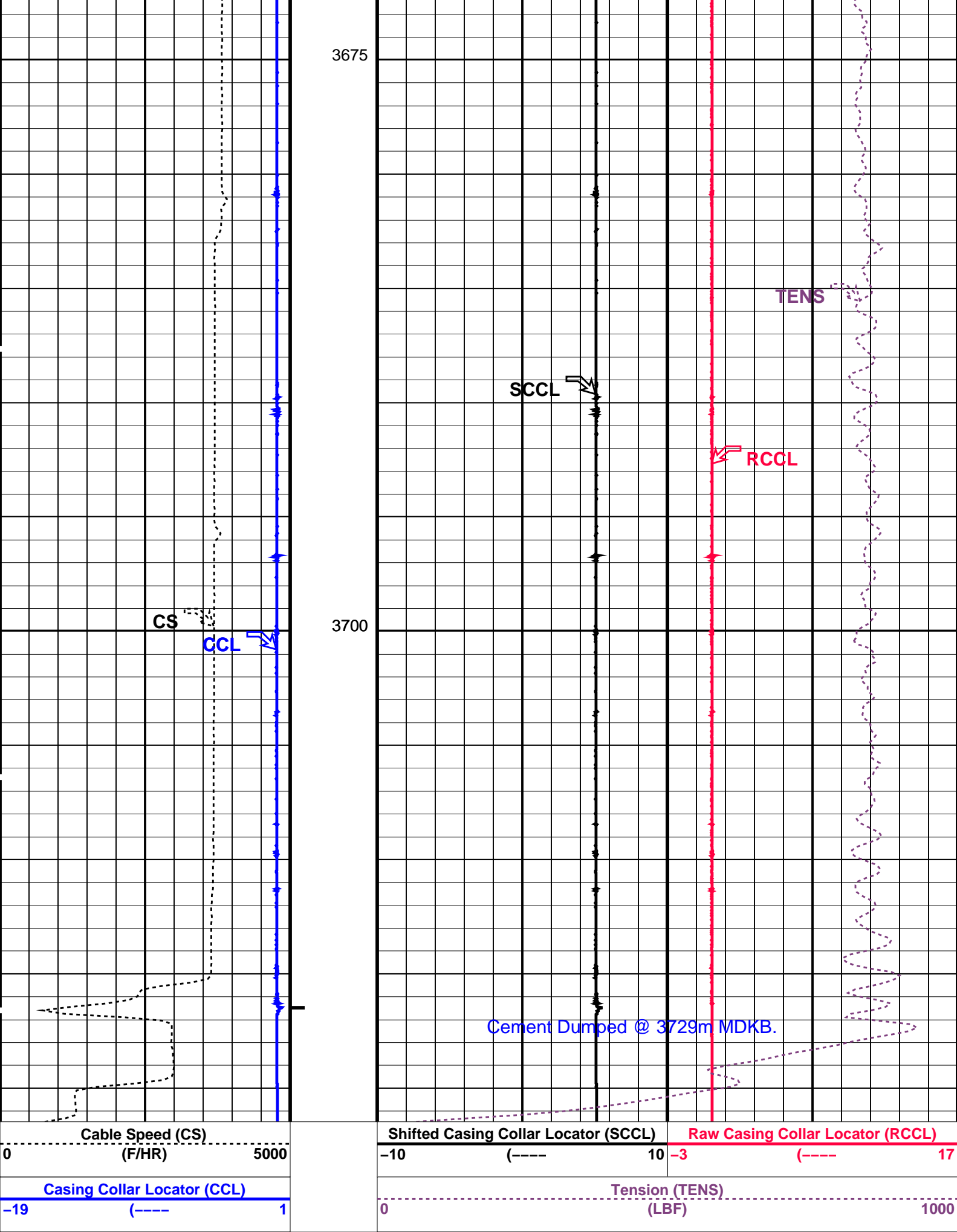
SHM_GUN 16C0-147 CCL-L 16C0-147

PIP SUMMARY

└─ Casing Collars

Time Mark Every 60 S





PIP SUMMARY


└─ Casing Collars

Parameters			
DLIS Name	Description	Value	
CCLD	CCL-L: Casing Collar Locator	12	IN
CCLT	CCL reset delay	0.3	V
	CCL Detection Level		
DO	System and Miscellaneous	0.6	M
PP	Depth Offset for Playback		
	Playback Processing	NORMAL	

Format: PERFO_1 Vertical Scale: 1:200 Graphics File Created: 12-Nov-2008 15:52

OP System Version: 16C0-147			
MCM			
SHM_GUN	16C0-147	CCL-L	16C0-147

Input DLIS Files					
DEFAULT	PERFO_053LUP	FN:52	PRODUCER	12-Nov-2008 15:46	3720.8 M 3656.2 M
Output DLIS Files					
DEFAULT	PERFO_054PUP	FN:53	PRODUCER	12-Nov-2008 15:52	



Water Dump Pass

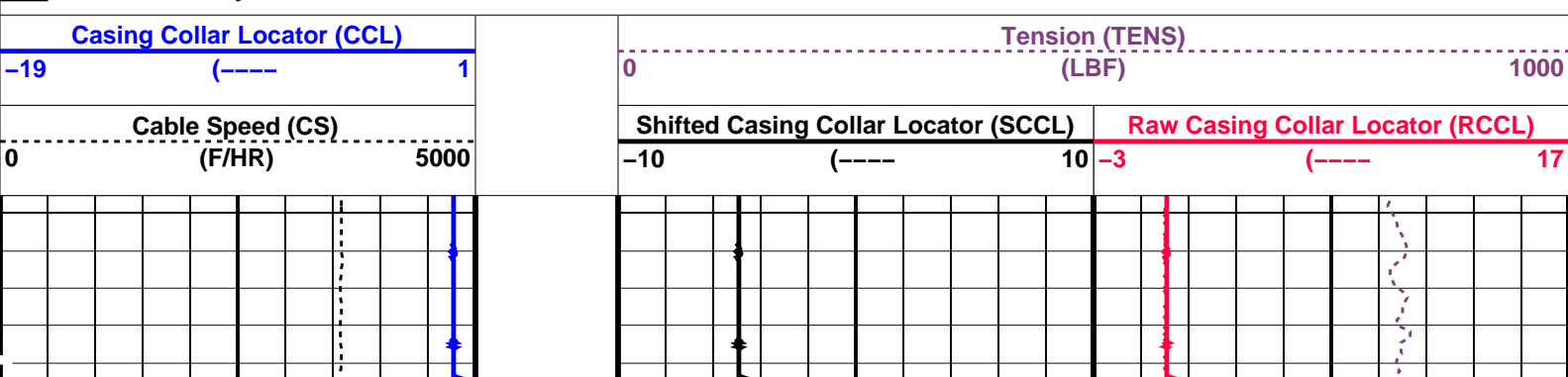
MAXIS Field Log

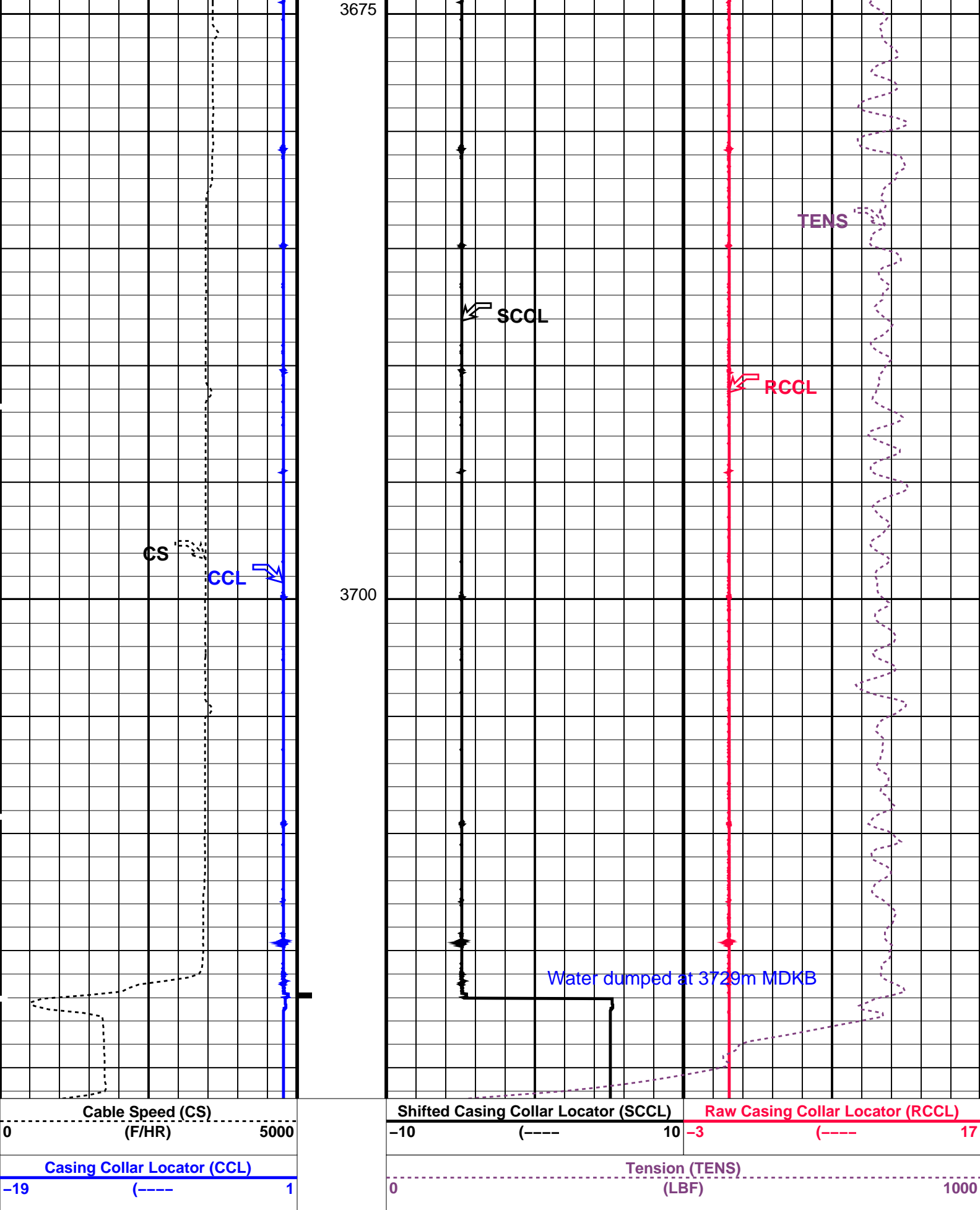
Input DLIS Files					
DEFAULT	PERFO_049LUP	FN:48	PRODUCER	12-Nov-2008 13:52	3720.2 M 3668.4 M
Output DLIS Files					
DEFAULT	PERFO_050PUP	FN:49	PRODUCER	12-Nov-2008 13:57	3721.3 M 3669.5 M

OP System Version: 16C0-147			
MCM			
SHM_GUN	16C0-147	CCL-L	16C0-147

PIP SUMMARY

└─ Casing Collars



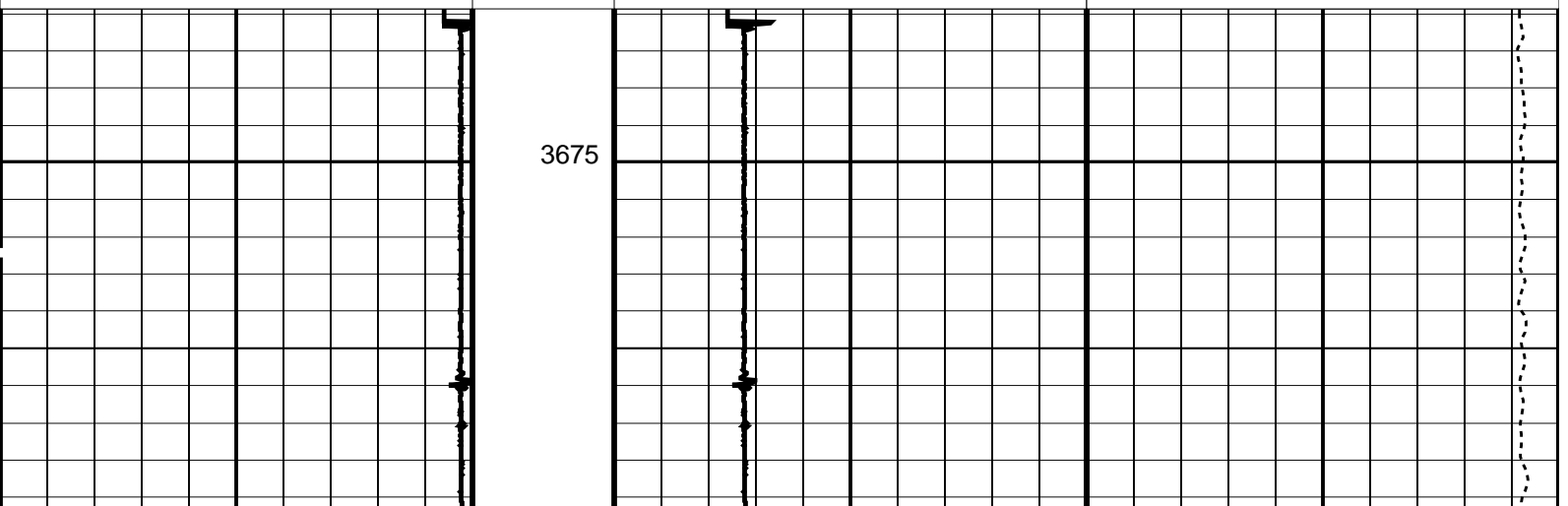


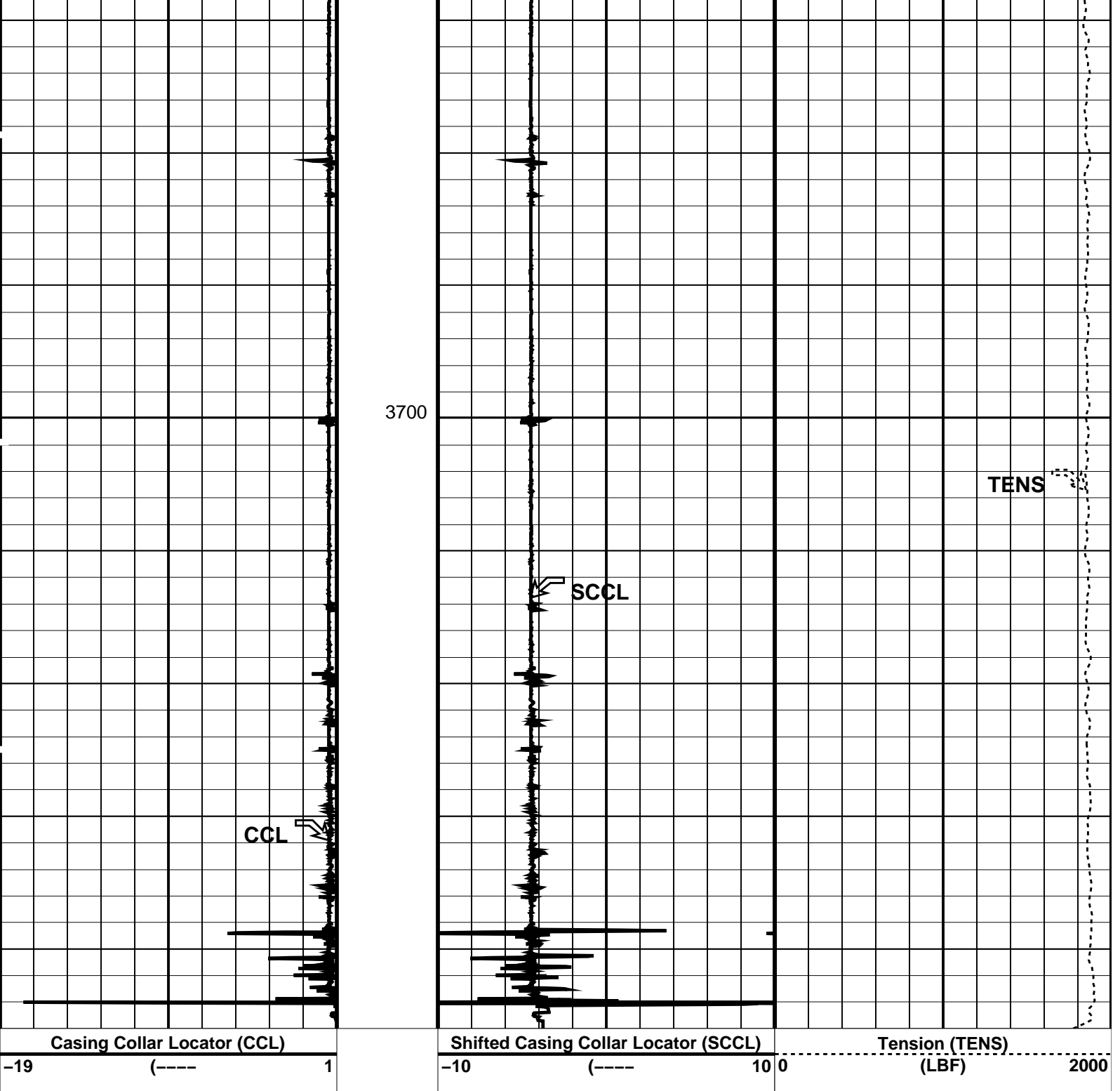
PIP SUMMARY

└─ Casing Collars

Time Mark Every 60 S

Parameters





PIP SUMMARY

Time Mark Every 60 S

Parameters

DLIS Name	Description	Value
CCLD	CCL-L: Casing Collar Locator	12 IN
CCLT	CCL reset delay	0.3 V
	CCL Detection Level	

Format: PERFO Vertical Scale: 1:200

Graphics File Created: 12-Nov-2008 09:58

OP System Version: 16C0-147

MCM

MPEX-BA 16C0-147 MPSU-CA 16C0-147
CCL-L 16C0-147

Output DLIS Files

Schlumberger**7" MPBT Plug
Set @ 3730m MDKB**

MAXIS Field Log

Output DLIS Files

DEFAULT

MPBT_042LUP

FN:41

PRODUCER

12-Nov-2008 09:08

OP System Version: 16C0-147

MCM

MPEX-BA
CCL-L16C0-147
16C0-147

MPSU-CA

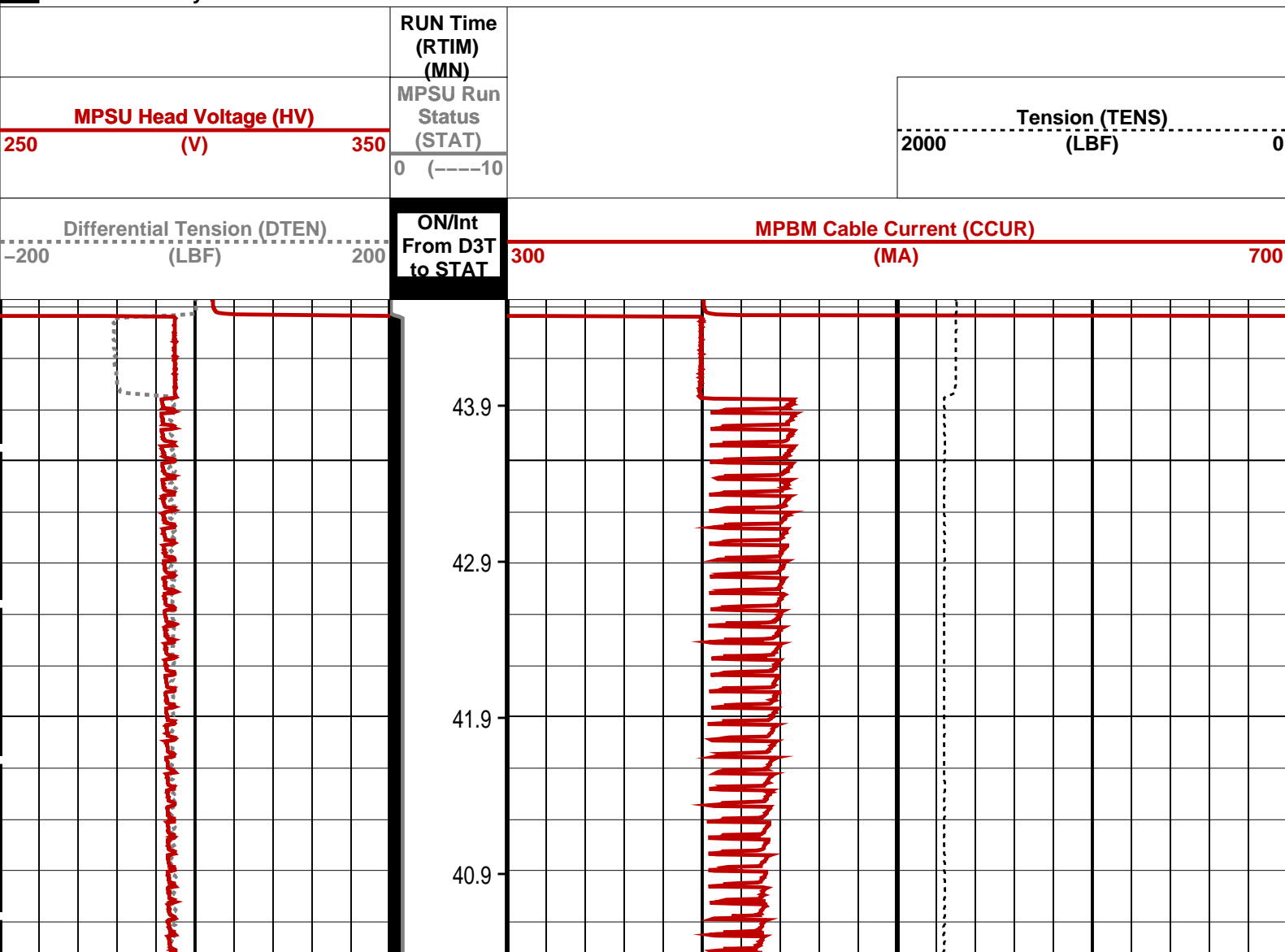
16C0-147

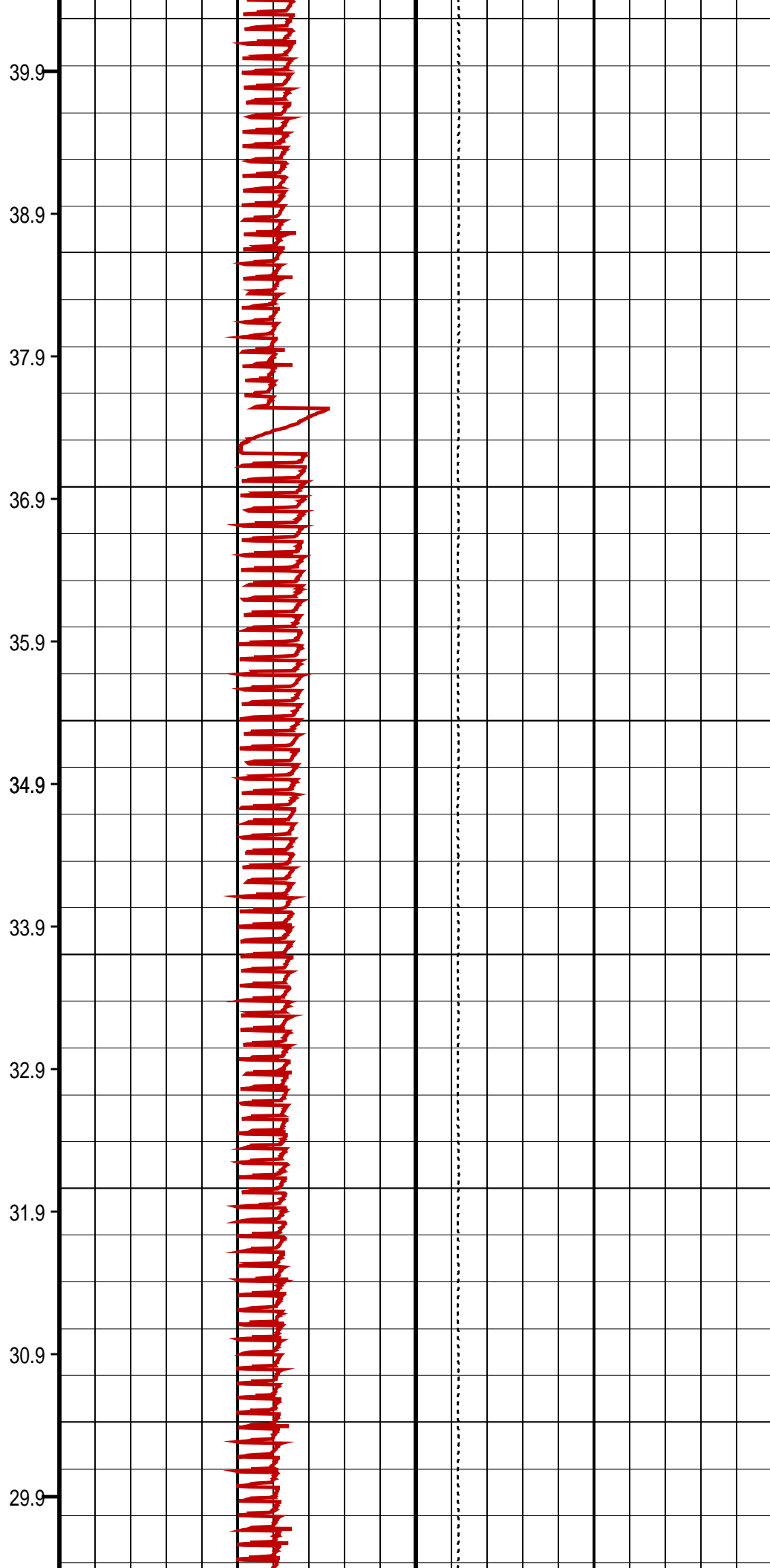
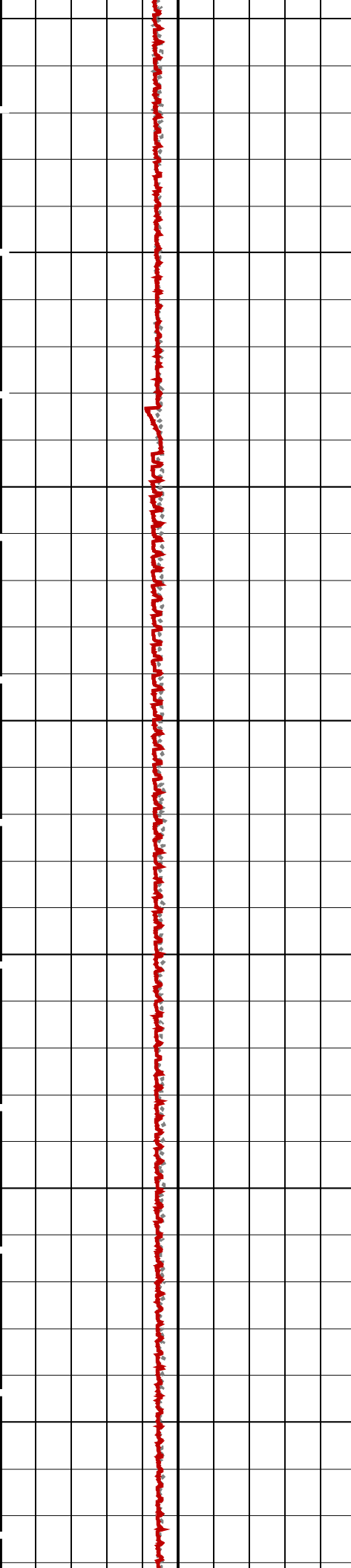
PIP SUMMARY

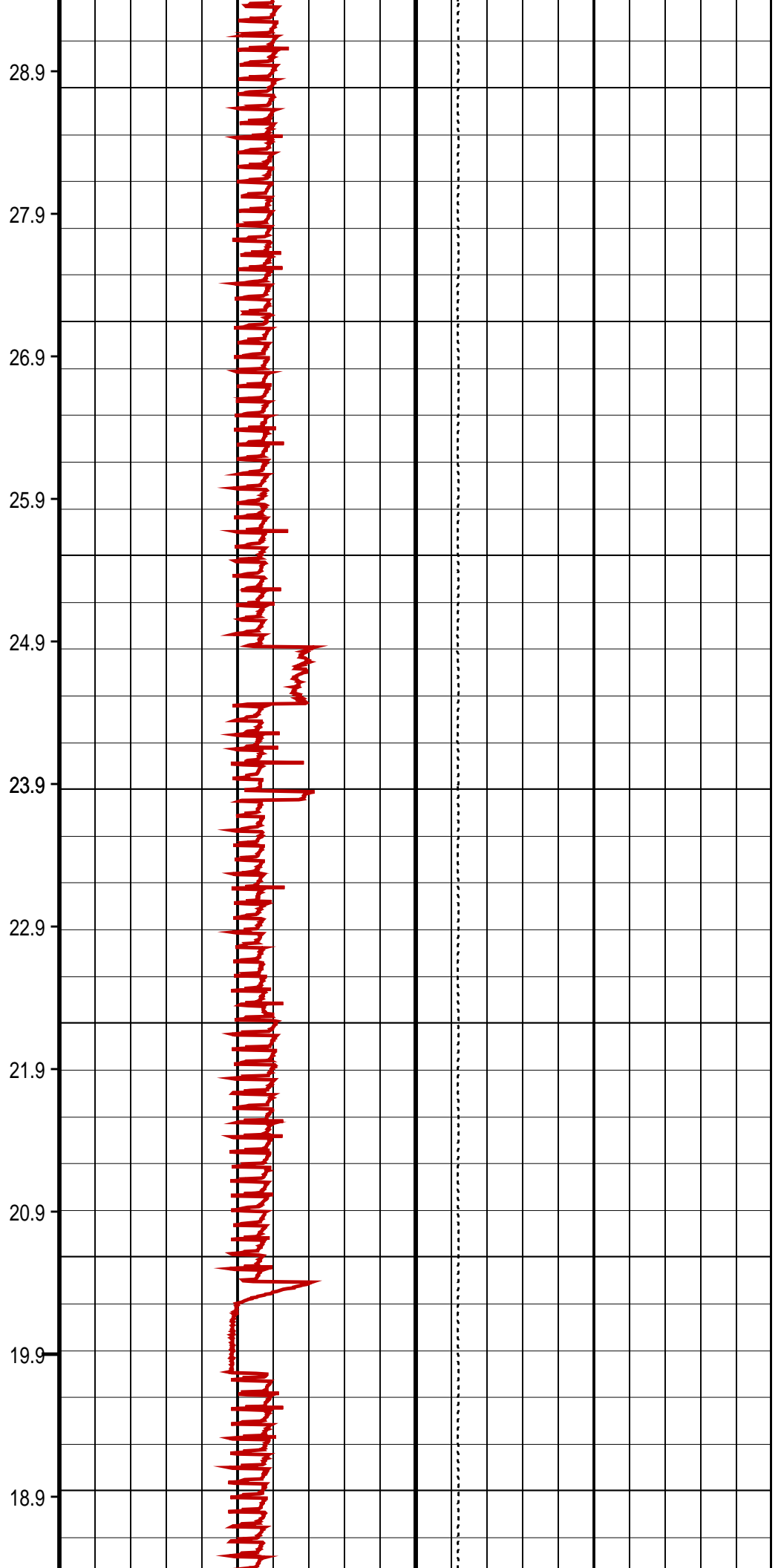
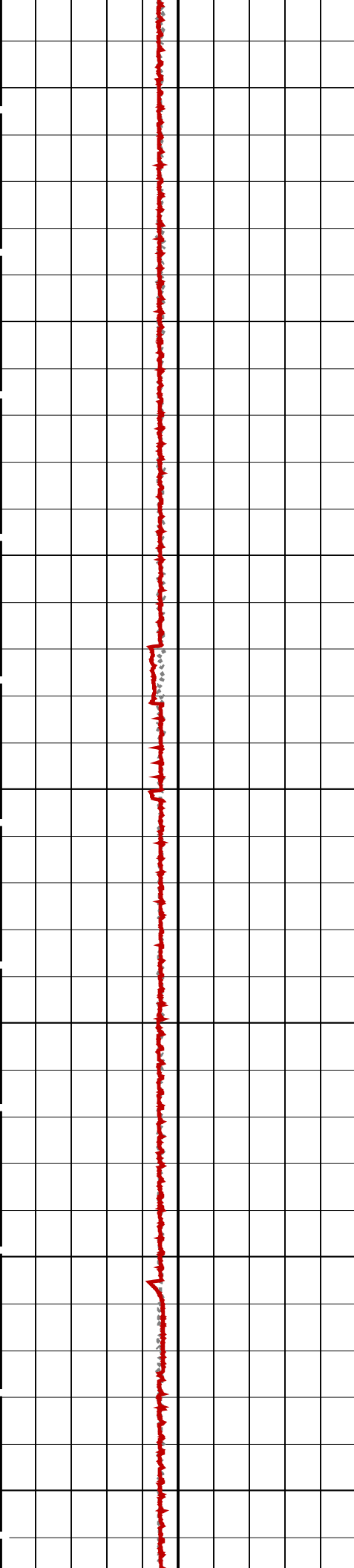
→ MPSU Run Time Every 1 MN

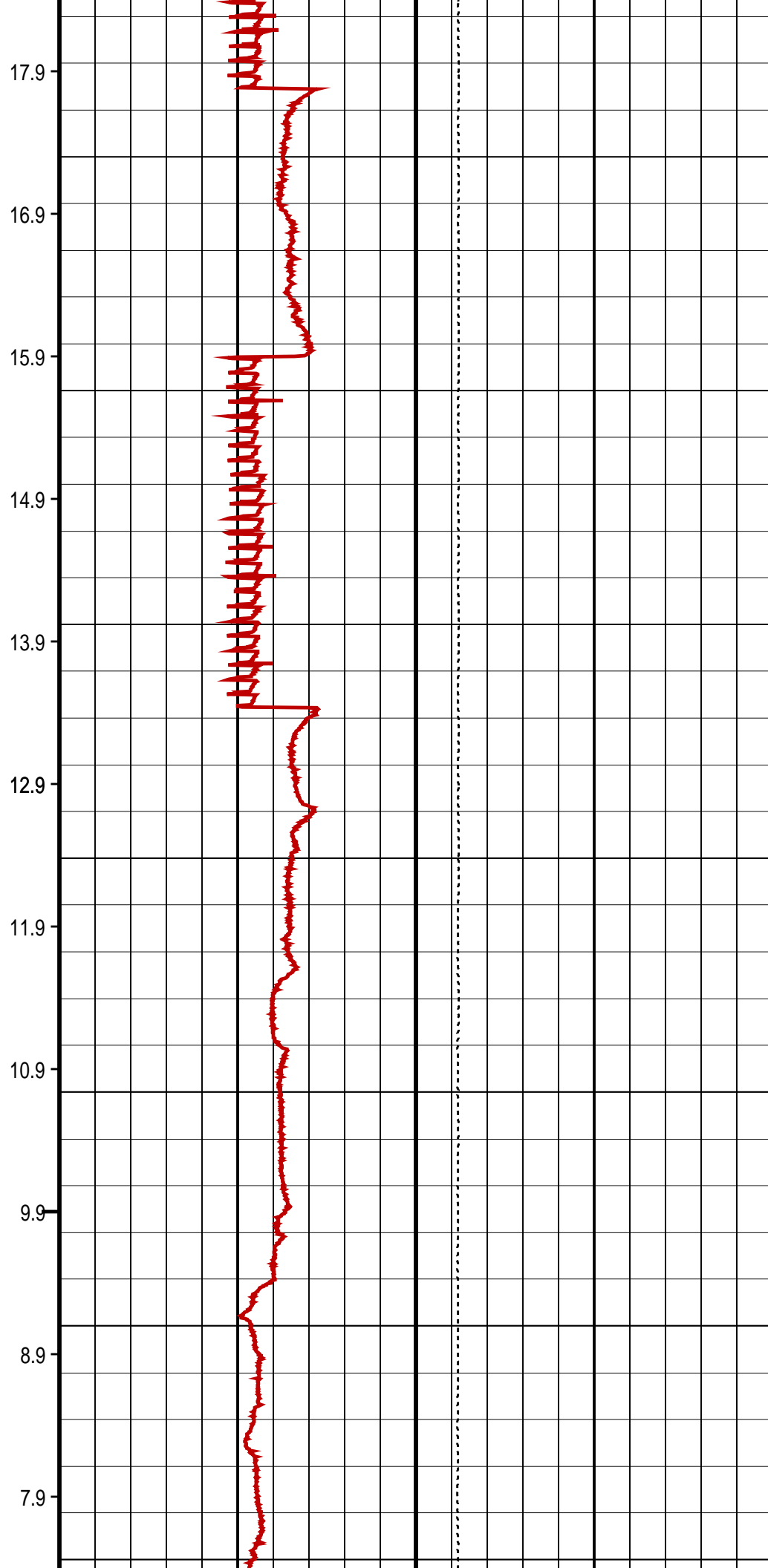
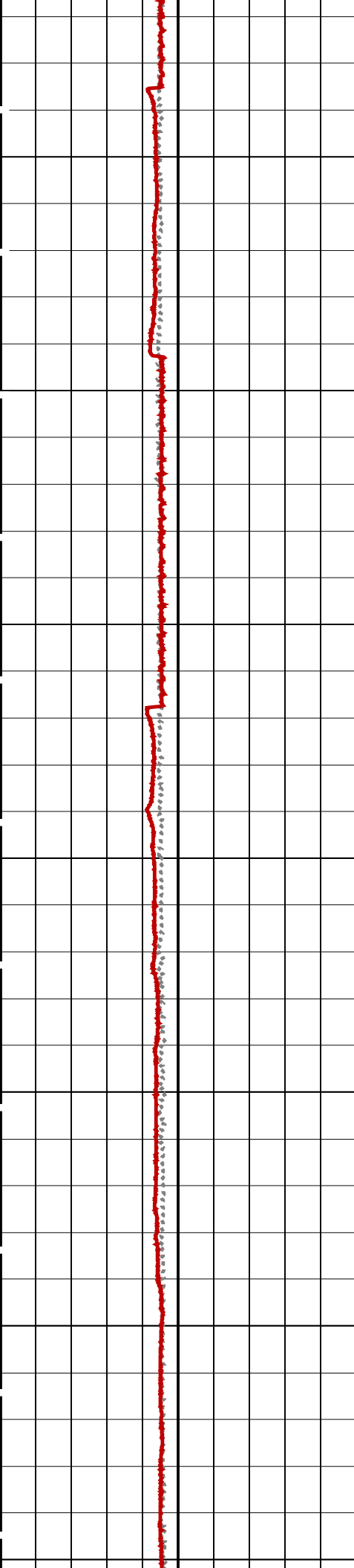
→ MPSU Run Time Every 10 MN

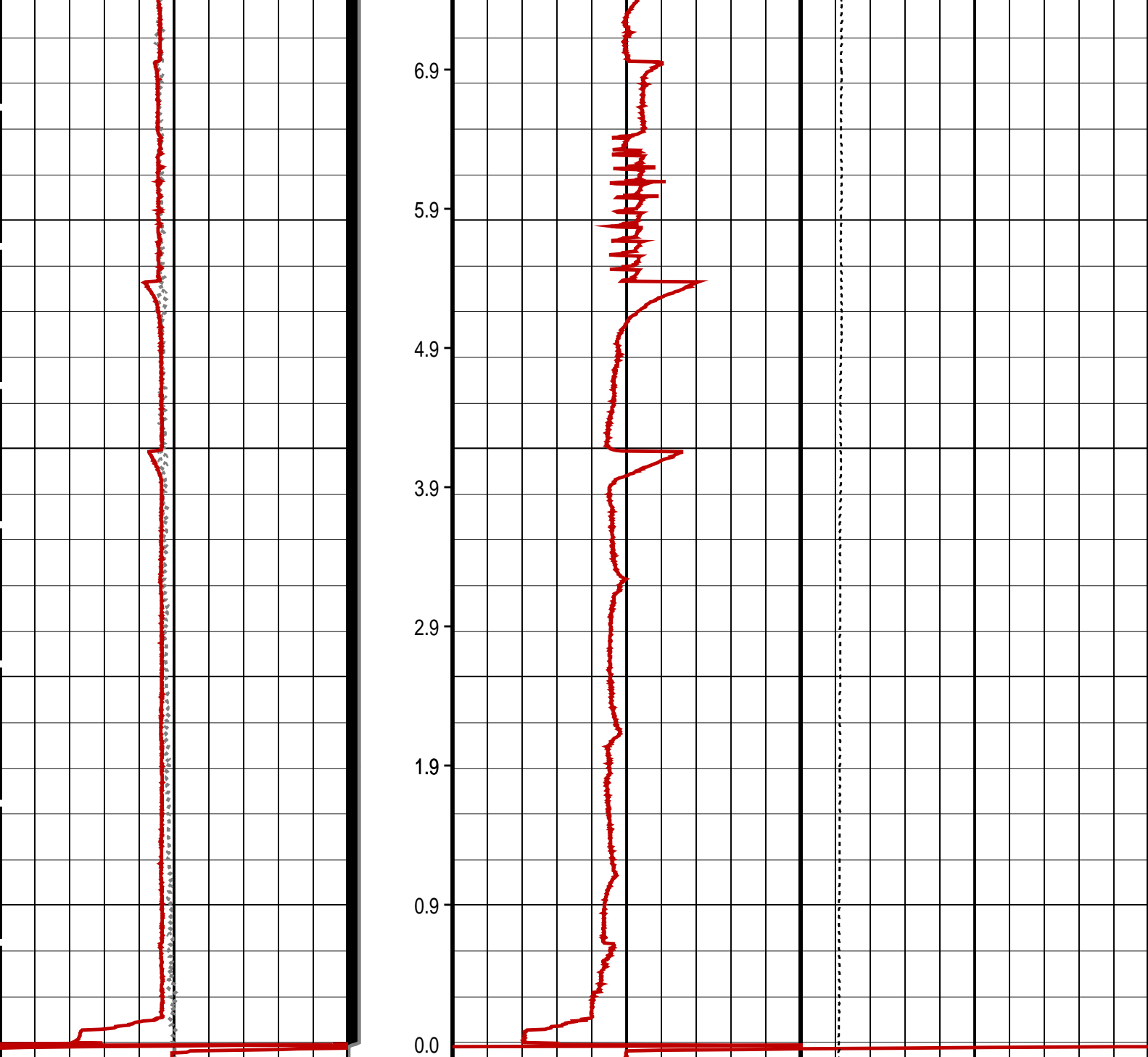
Time Mark Every 60 S











Differential Tension (DTEN) (LBF)	ON/Int From D3T to STAT	MPBM Cable Current (CCUR) (MA)
-200200	300700	
MPSU Head Voltage (HV) (V)	MPSU Run Status (STAT)	Tension (TENS) (LBF)
250350	0 (----10	20000
	RUN Time (RTIM) (MN)	

PIP SUMMARY

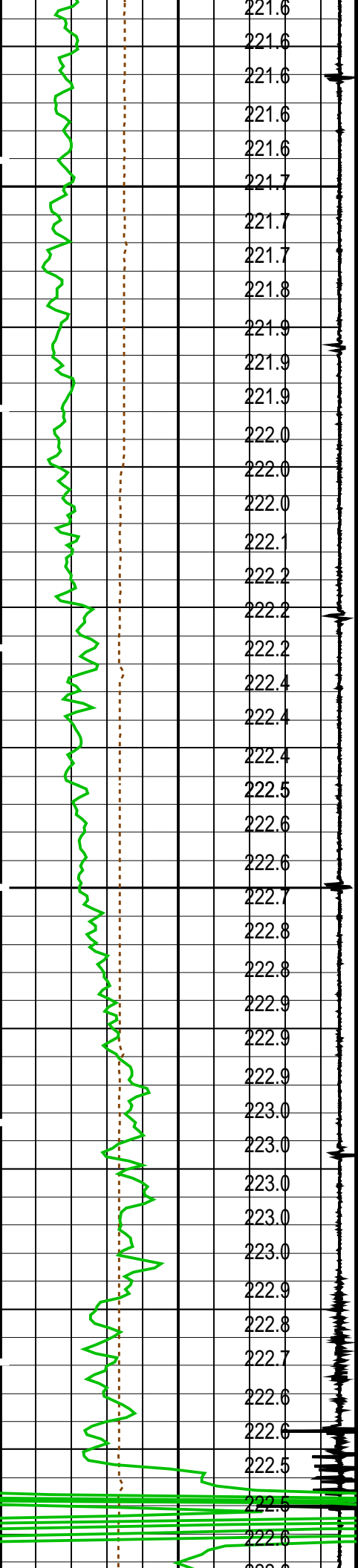
- ↵ MPSU Run Time Every 1 MN
- MPSU Run Time Every 10 MN

Time Mark Every 60 S

Parameters

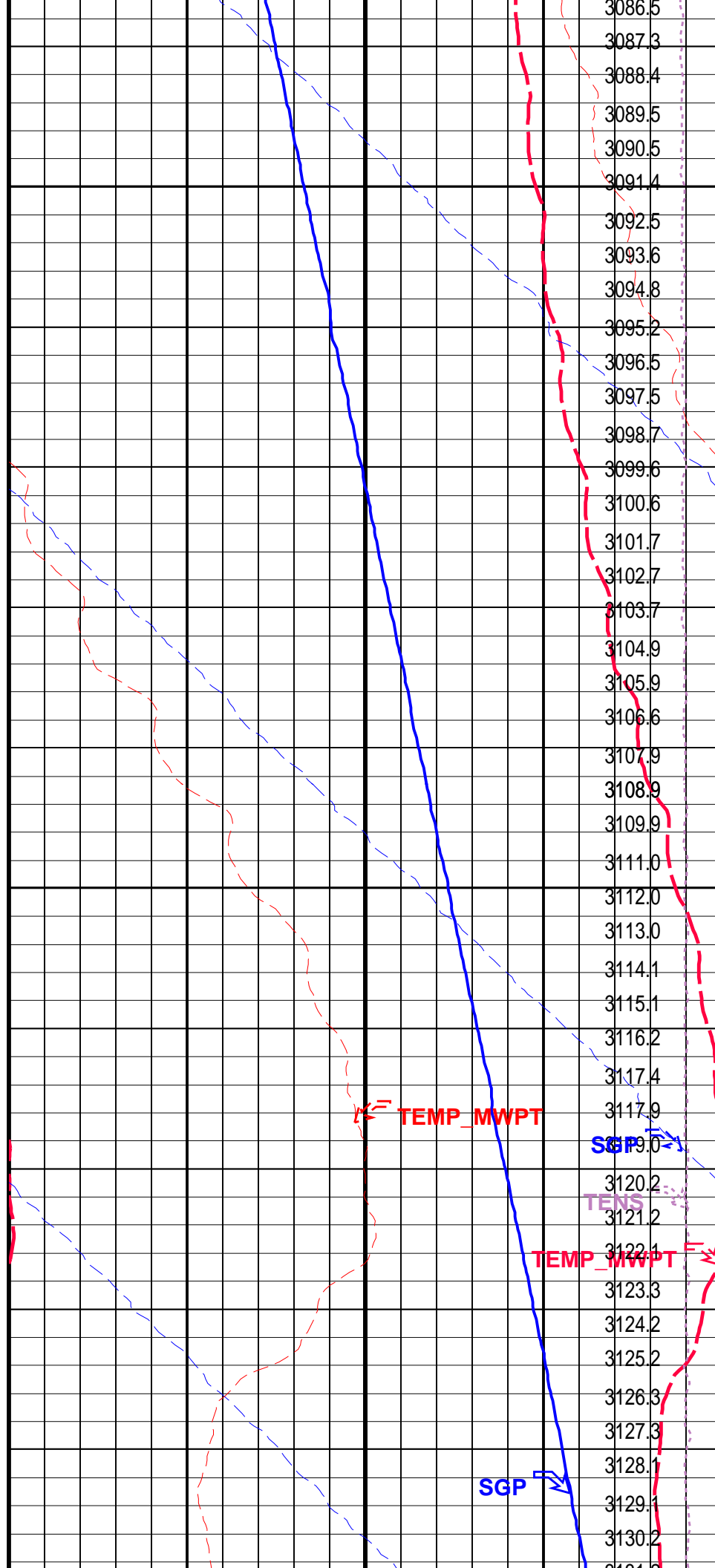
DLIS Name	Description	Value
-----------	-------------	-------

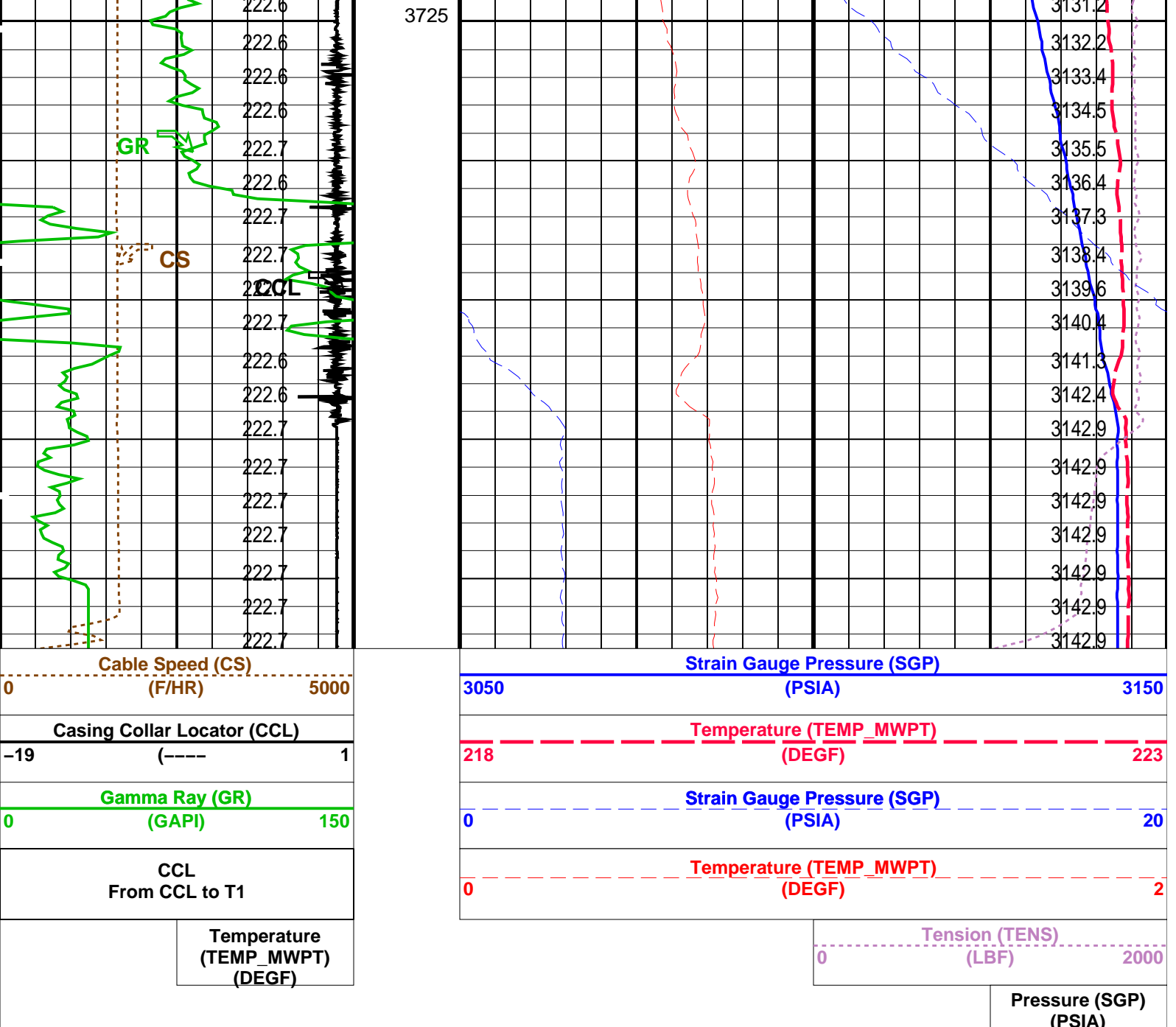
MPSU_CA: MECHANICAL PLUGBACK SETTING UNIT



3675

3700





PIP SUMMARY

Time Mark Every 60 S

Parameters			
DLIS Name	Description	Value	
MWPT-CA: MEASUREMENT WHILE PERFORATING TOOL			
DEVI_FL_CORR	Deviation Angle for Flow Line Correction	0	DEG
FLD	Flow Line Density	1	G/C3
MWPT_NULL_SOURCE	MWPT NULL Temperature Source	TEMS	
MWPT_NULL_TEMP	MWPT NULL Temperature	0.0	DEGC
System and Miscellaneous			
DO	Depth Offset for Playback	-4.7	M
PP	Playback Processing	NORMAL	

Format: MWP	Vertical Scale: 1:200	Graphics File Created: 11-Nov-2008 15:39	
-------------	-----------------------	--	--

OP System Version: 16C0-147

MCM

MWP_GUN	16C0-147	MWPT-CA	16C0-147
MWGT-AA	16C0-147		

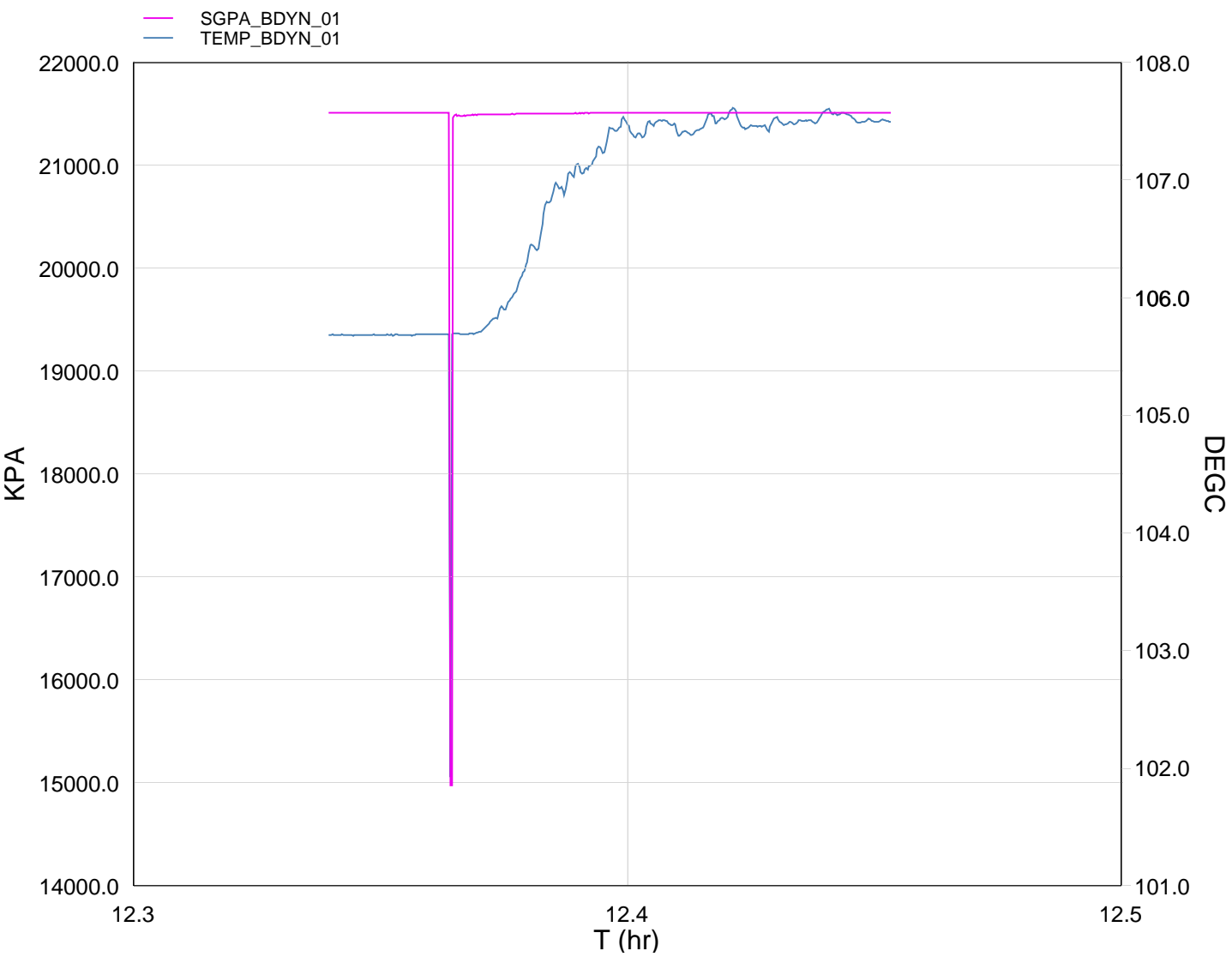
Input DLIS Files			
------------------	--	--	--

Output DLIS Files



GUN # 1
3714m to 3719m MDKB

MAXIS Field Log



TIME	KPA	PSIA	DEGF
9210.0	21513.5182	3120.2760	222.2325
9240.0	21512.0192	3120.0588	222.2259
9270.0	21512.5508	3120.1357	222.2375
9300.0	21489.4417	3116.7840	222.2461
9330.0	21496.2358	3117.7694	222.5838

9360.0	21504.0752	3118.9065	223.6854
9390.0	21508.3713	3119.5295	224.7131
9420.0	21509.8145	3119.7390	225.5543
9450.0	21511.3621	3119.9633	225.5249
9480.0	21511.6196	3120.0006	225.4474
9510.0	21511.7100	3120.0139	225.3889
9540.0	21512.2136	3120.0869	225.4496
9570.0	21511.6196	3120.0006	225.6893
9600.0	21511.9044	3120.0420	225.5469

Schlumberger

Shooting Pass

MAXIS Field Log

Company: Esso Australia Pty Ltd. Well: W-28

Output DLIS Files

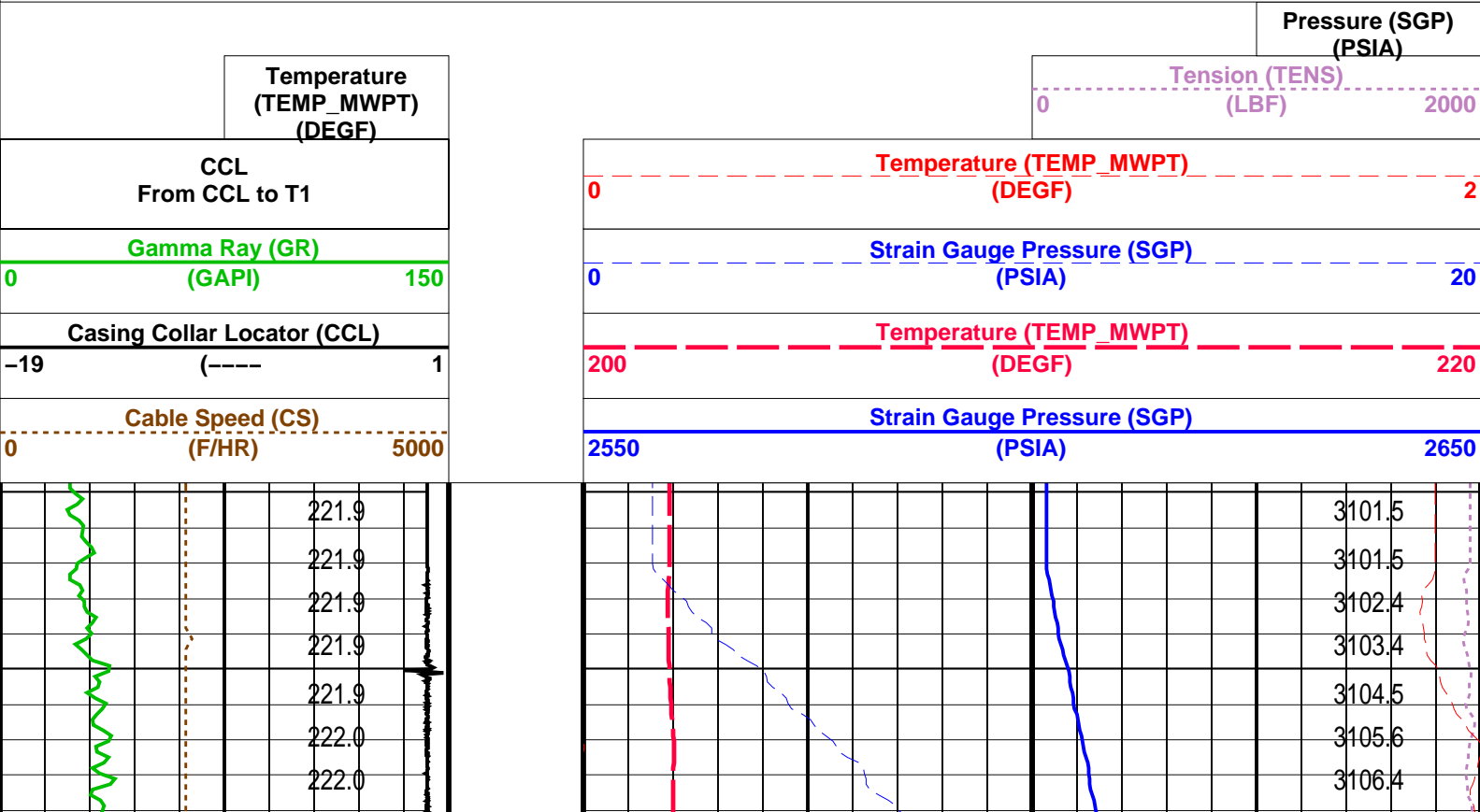
DEFAULT PERFO_028LUP FN:27 PRODUCER 11-Nov-2008 11:56

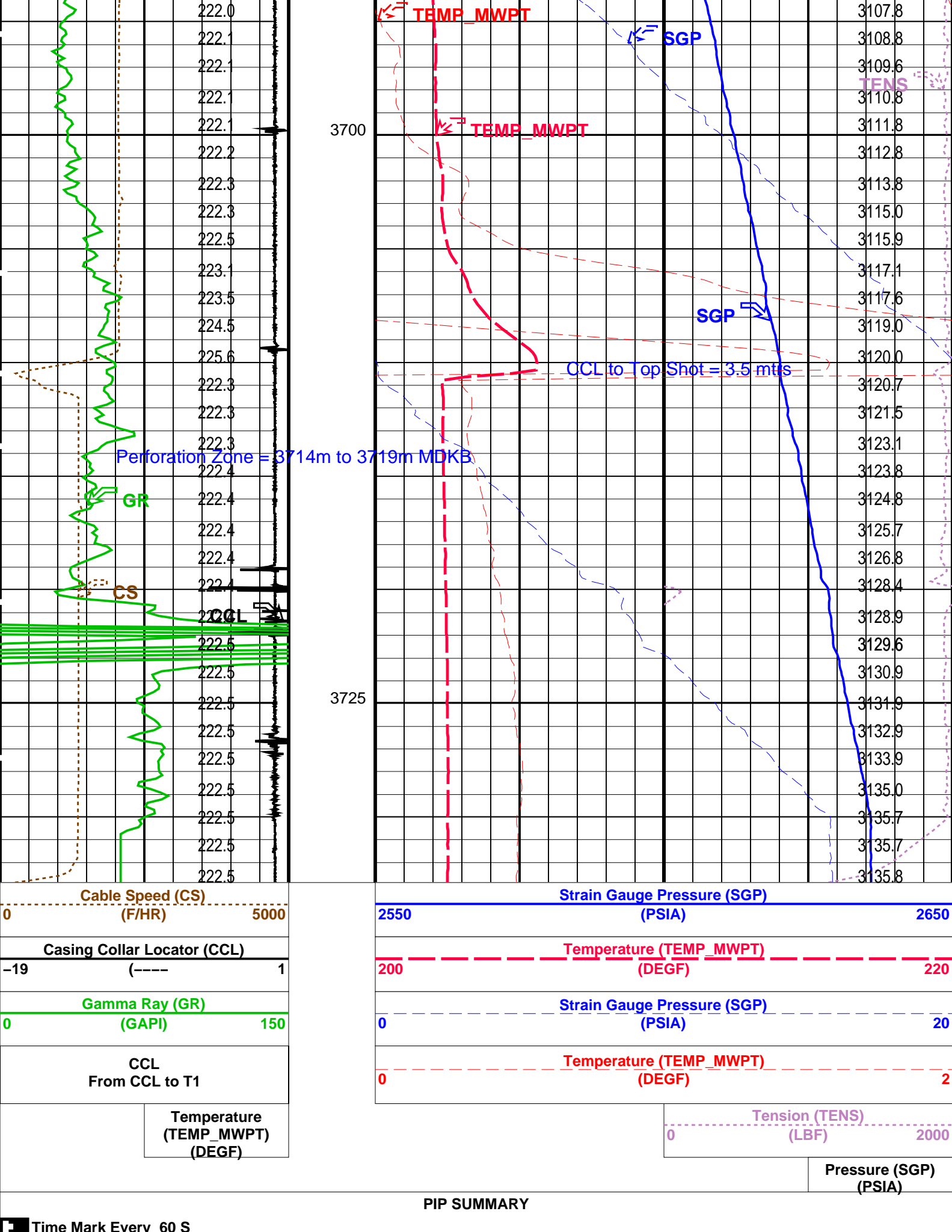
OP System Version: 16C0-147
MCM

MWP_GUN 16C0-147 MWPT-CA 16C0-147
MWGT-AA 16C0-147

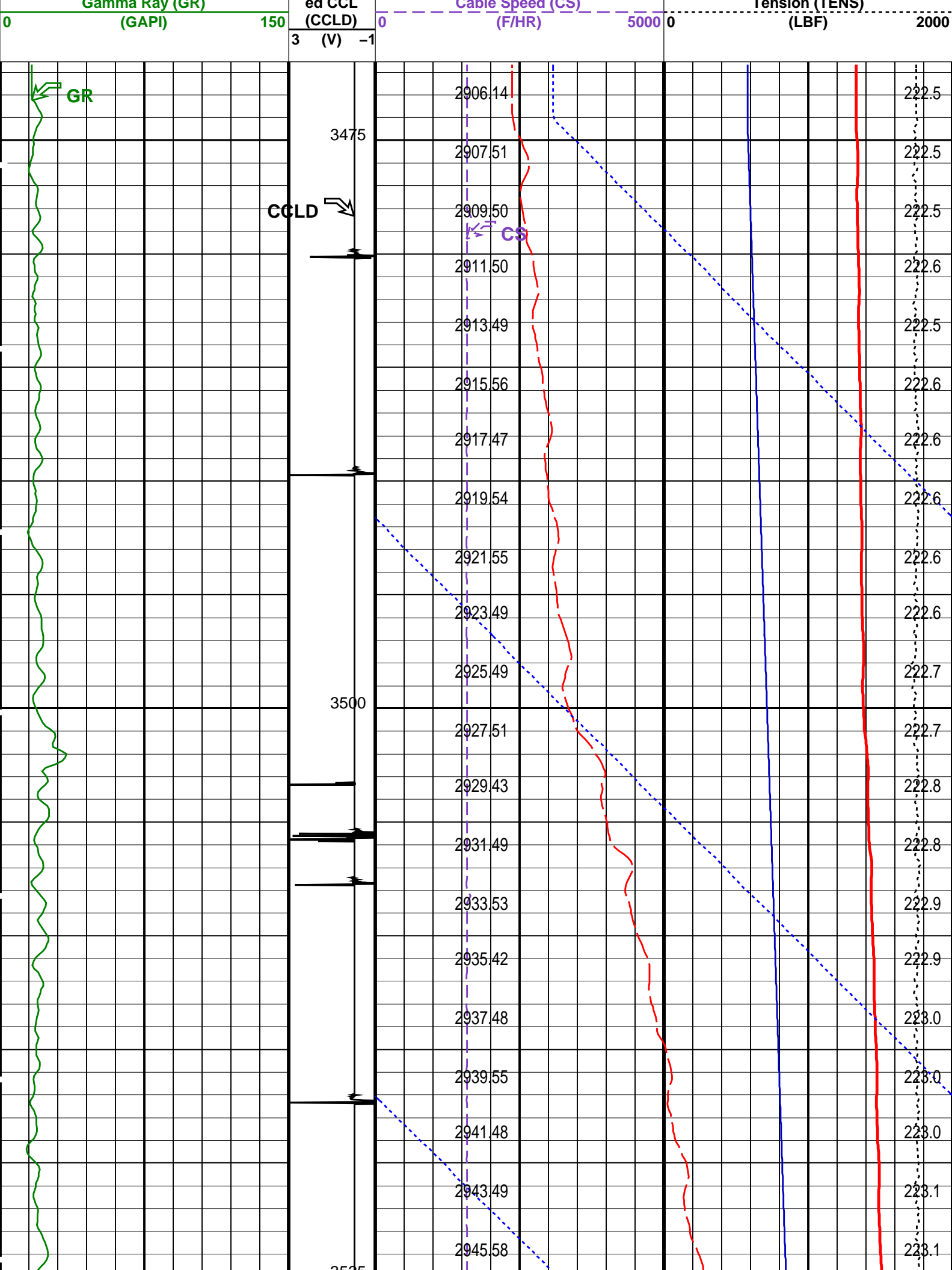
PIP SUMMARY

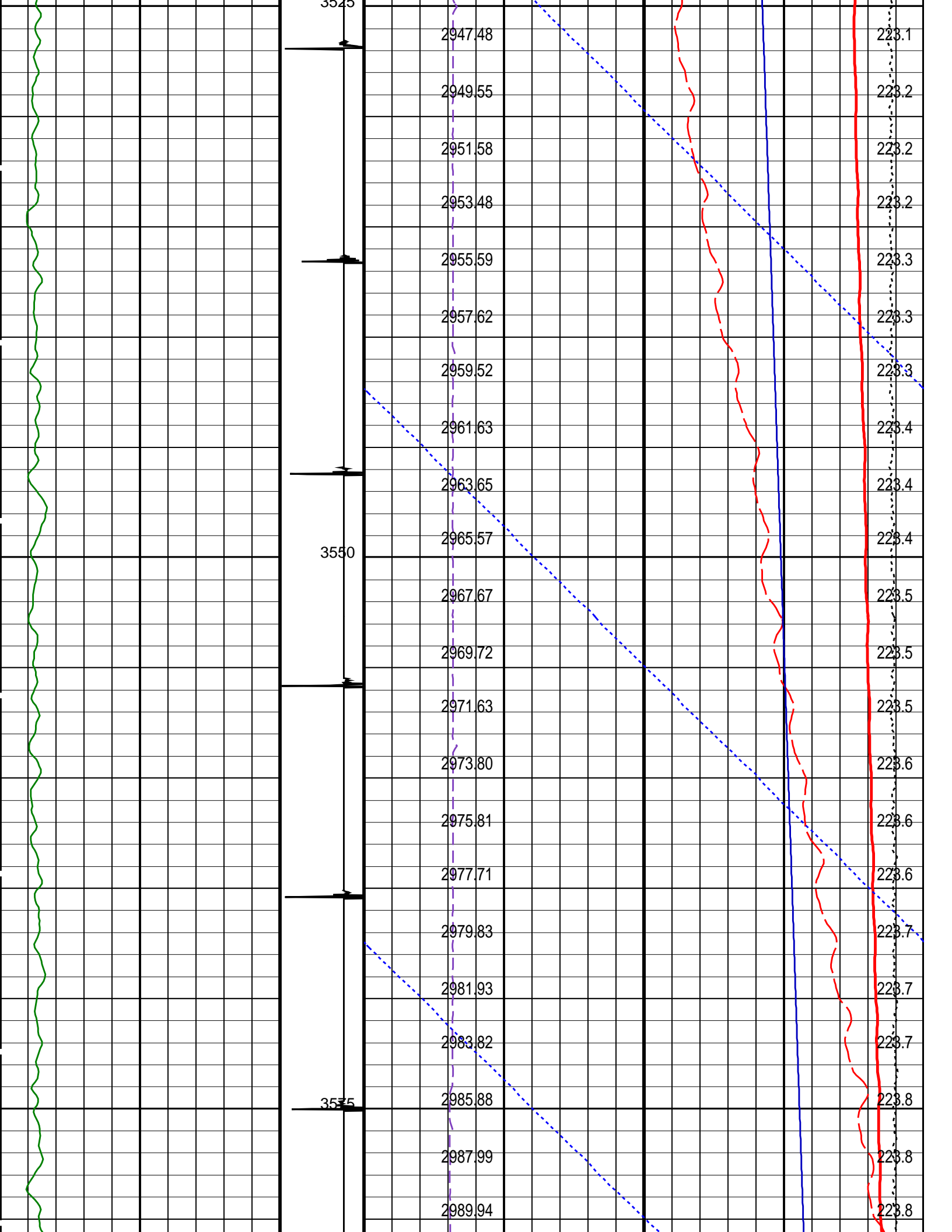
Time Mark Every 60 S

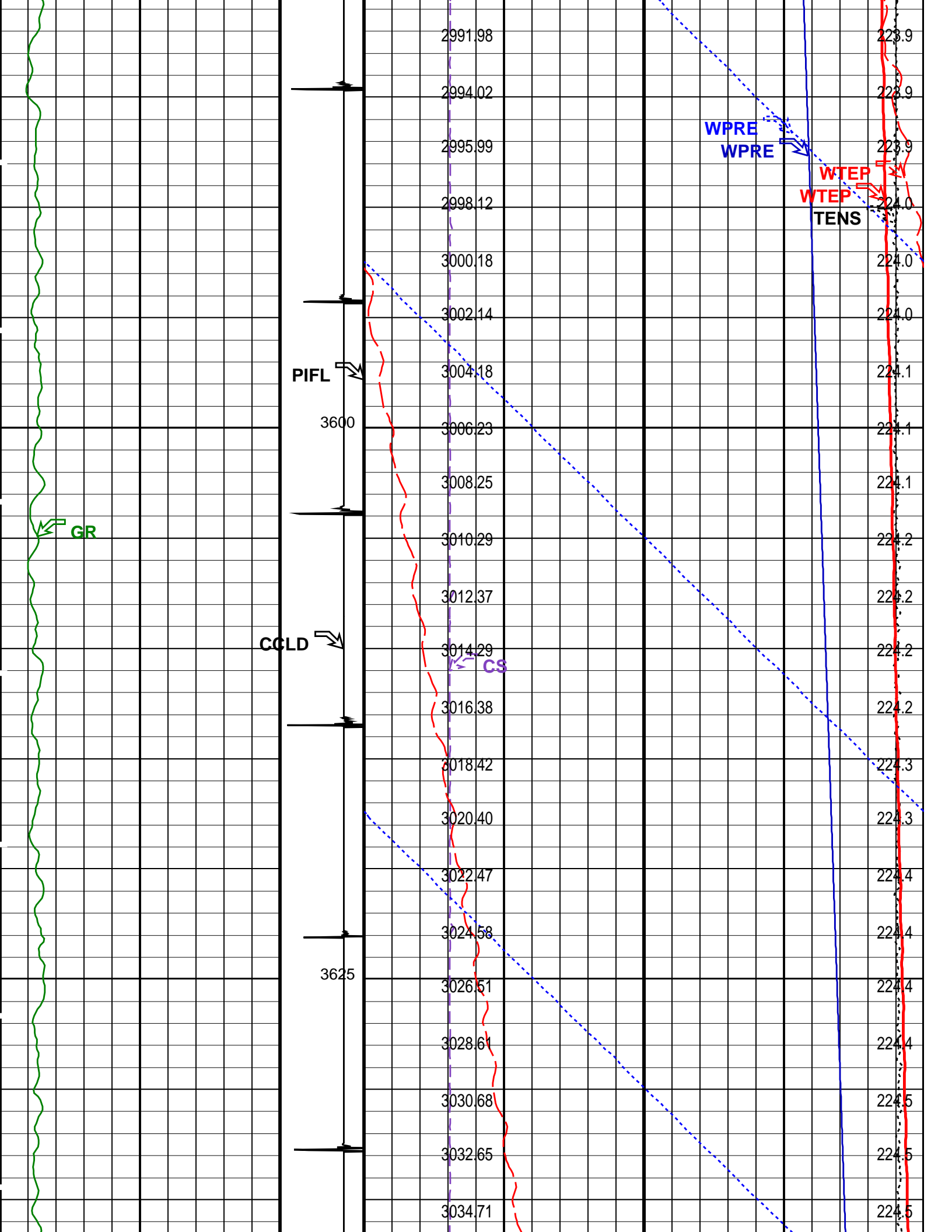


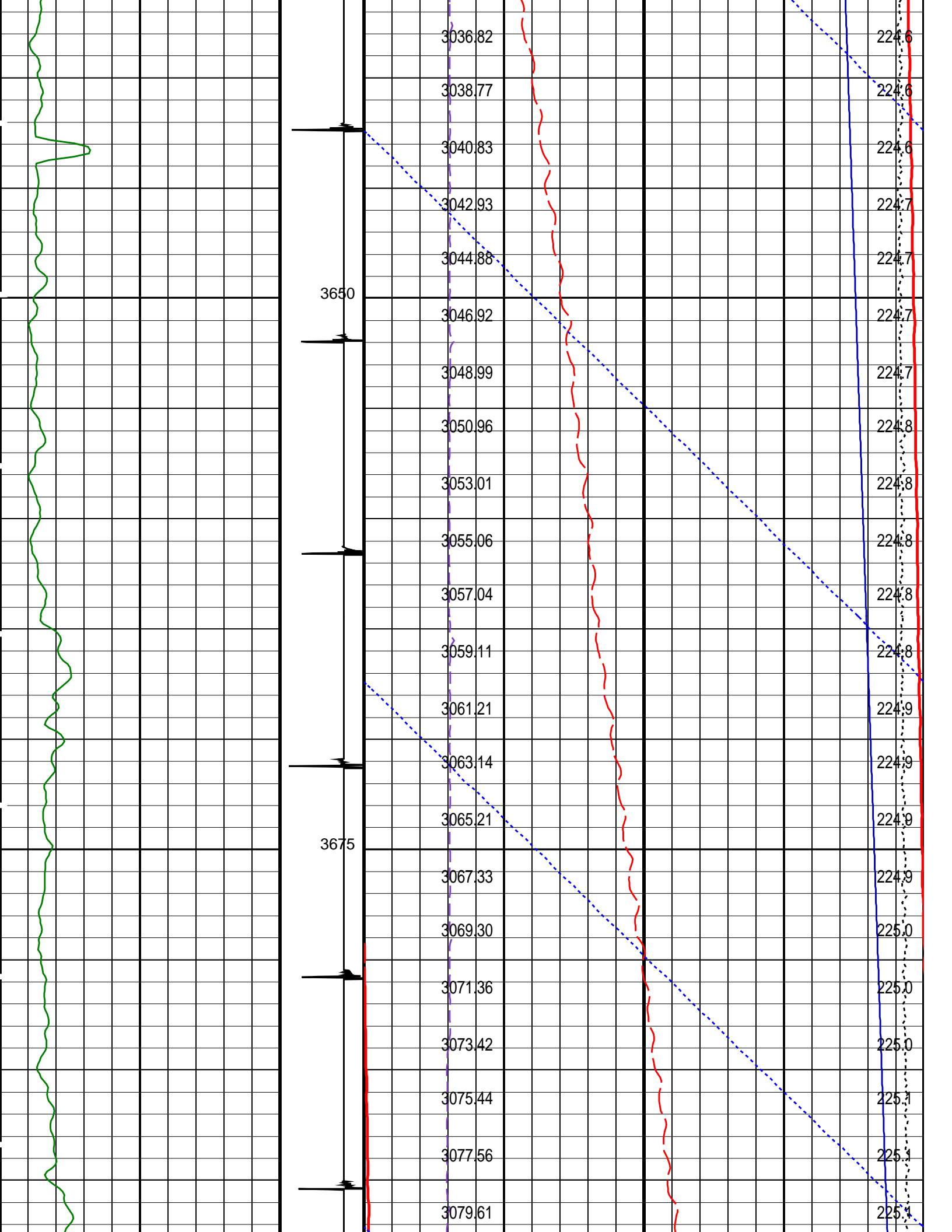


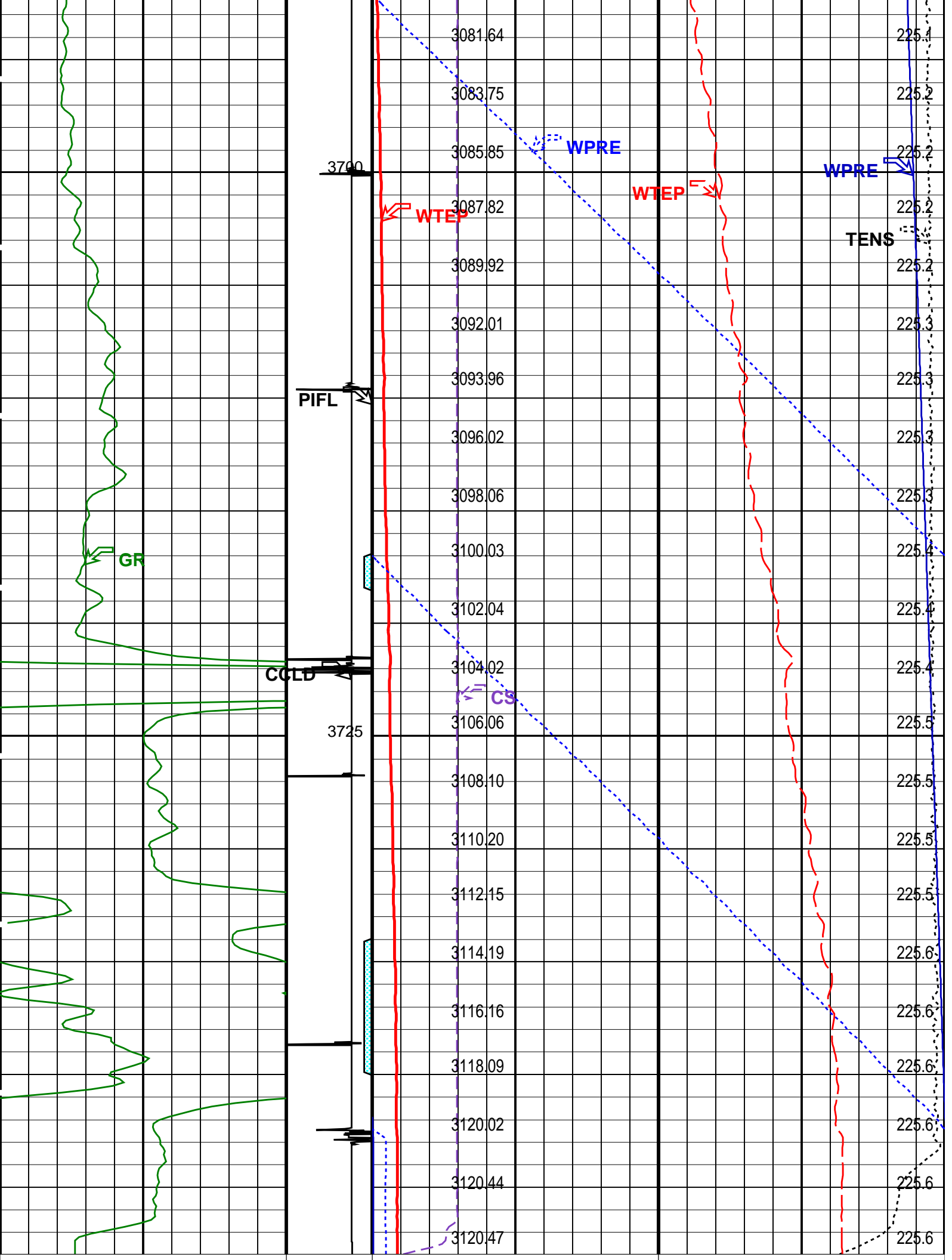
DLIS Name		Description		Value	
MWPT-CA: MEASUREMENT WHILE PERFORATING TOOL					
DEVI_FL_CORR		Deviation Angle for Flow Line Correction		0	DEG
FLD		Flow Line Density		1	G/C3
MWPT_NULL_SOURCE		MWPT NULL Temperature Source		TEMS	
MWPT_NULL_TEMP		MWPT NULL Temperature		0.0	DEGC
Format: MWP		Vertical Scale: 1:200		Graphics File Created: 11-Nov-2008 11:56	
OP System Version: 16C0-147					
MCM					
MWP_GUN		16C0-147		MWPT-CA 16C0-147	
MWGT-AA		16C0-147			
Output DLIS Files					
DEFAULT		PERFO_028LUP		FN:27 PRODUCER 11-Nov-2008 11:56	
Schlumberger					
GR-CCL Depth Determination					
MAXIS Field Log					
Company: Esso Australia Pty Ltd. Well: W-28					
Input DLIS Files					
DEFAULT		PSP_006LUP		FN:5 PRODUCER 10-Nov-2008 15:38 3746.6 M 3470.1 M	
Output DLIS Files					
DEFAULT		PSP_014PUP		FN:13 PRODUCER 10-Nov-2008 19:55 3748.0 M 3471.5 M	
OP System Version: 16C0-147					
MCM					
PSPT-B		16C0-147			
PIP SUMMARY					
Time Mark Every 60 S					
		Amplified Well Pressure (WPRE)			
		0 (PSIA) 20			
		Well Pressure (WPRE)			
		2520 (PSIA) 3120			
		Well Temperature (WTEP)			
		0 (DEGF) 2			
		Well Pressure (WPRE) (PSIA)		Temperature (WTEP) (DEGF)	
		Well Temperature (WTEP)			
		210 (DEGF) 225			
		Discriminat		Tension (TENS)	











Gamma Ray (GR) (GAPI)		150	Discriminat ed CCL (CCLD) 3 (V) -1	Cable Speed (CS) (F/HR)		0	5000	Tension (TENS) (LBF)		0	2000		
Perfo Zone From PERFO_ CURVE to D3T				Well Temperature (WTEP) (DEGF)									
				210								225	
				Well Pressure (WPRE) (PSIA)						Temperature (WTEP) (DEGF)			
				Well Temperature (WTEP) (DEGF)								2	
				Well Pressure (WPRE) (PSIA)								3120	
				Amplified Well Pressure (WPRE) (PSIA)								20	
				0									

PIP SUMMARY

Time Mark Every 60 S

Format: PSP_1 Vertical Scale: 1:200 Graphics File Created: 10-Nov-2008 19:55

OP System Version: 16C0-147

MCM

PSPT-B 16C0-147

Parameters

DLIS Name	Description	Value
System and Miscellaneous		
DO	Depth Offset for Playback	1.3 M
PP	Playback Processing	NORMAL

Input DLIS Files

DEFAULT	PSP_006LUP	FN:5	PRODUCER	10-Nov-2008 15:38	3746.6 M	3470.1 M
---------	------------	------	----------	-------------------	----------	----------

Output DLIS Files

DEFAULT	PSP_014PUP	FN:13	PRODUCER	10-Nov-2008 19:55
---------	------------	-------	----------	-------------------

Company:

Esso Australia Pty Ltd.

Well:

W-28

Field:

West Kingfish

Rig :

Prod4 / Ausl

Country:

Australia

Schlumberger

2" Powerjet Omega HSD

Mwpt Perforation Record

7" Mpbt Plug Setting Record