

Company: Ezzo Australia Pty Ltd.

Well: W-8a

Field: West Tuna

Rig: Crane / Prod 4 Country: Australia

2-1/8" Powerjet Spiral
Perforation Record

Rig: Crane / Prod 4
Field: West Tuna
Location: Gippsland
Well: W-8a
Company: Ezzo Australia Pty Ltd.

LOCATION

Gippsland Basin Bass Strait	Elev.: K.B. 34.7 m G.L. 60 m D.F. 34.7 m
Permanent Datum: _____ Log Measured From: K.B. _____ Drilling Measured From: K.B. _____	Elev.: 0 m 34.7 m above Perm. Datum

State: Victoria	Max. Well Deviation 64 deg	Longitude 148° 25' 05.29"E	Latitude 38° 10' 16.00"S
-----------------	-------------------------------	-------------------------------	-----------------------------

Logging Date 26-Sep-2008

Run Number 1

Depth Driller 3393 m

Schlumberger Depth 3393 m

Bottom Log Interval 3390 m

Top Log Interval 3250 m

Casing Fluid Type Production Fluids

Salinity

Density

Fluid Level 0 m

BIT/CASING/TUBING STRING

Bit Size 8.500 in

From 1294 m

To 3590 m

Casing/Tubing Size 4.500 in

Weight 11.6 lbm/ft

Grade 13CR

From 2143.55 m

To 3506.5 m

Maximum Recorded Temperatures 278 degF 13:30

Logger On Bottom 26-Sep-2008

Unit Number 889 Location Prod 4 / AUSL

Recorded By S Gilbert

Witnessed By B White

Run 1

Oil Density
Water Salinity
Gas Gravity

Bo

Bw

1/Bg

Bubble Point Pressure

Bubble Point Temperature

Solution GOR

Maximum Deviation 64 deg

CEMENTING DATA

Primary/Squeeze Primary

Casing String No

Lead Cement Type

Volume

Density

Water Loss

Additives

Tail Cement Type

Volume

Density

Water Loss

Additives

Expected Cement Top

Logging Date

Run Number

Depth Driller

Schlumberger Depth

Bottom Log Interval

Top Log Interval

Casing Fluid Type

Salinity

Density

Fluid Level

BIT/CASING/TUBING STRING

Bit Size

From

To

Casing/Tubing Size

Weight

Grade

From

To

Maximum Recorded Temperatures

Logger On Bottom 26-Sep-2008

Unit Number 889 Location Prod 4 / AUSL

Recorded By S Gilbert

Witnessed By B White

DEPTH SUMMARY LISTING

Date Created: 25-SEP-2008 10:12:53

Depth System Equipment

Depth Measuring Device	Tension Device	Logging Cable
Type: IDW-EB Serial Number: 6373 Calibration Date: 4-Jan-2007 Calibrator Serial Number: 9 Calibration Cable Type: 2-32ZT Wheel Correction 1: -2 Wheel Correction 2: -4	Type: PSDS/OSDS Serial Number: 325337 Calibration Date: 21-Sep-2008 Calibrator Serial Number: 1174 Calibration Gain: 0.91 Calibration Offset: -106.00	Type: 2-32ZT Serial Number: 208196 Length: 6900.06 M Conveyance Method: Wireline Rig Type: Offshore_Fixed

Depth Control Parameters

Log Sequence:	Subsequent Log In the Well
Reference Log Name:	Solar Petrophysical Analysis.
Reference Log Run Number:	
Reference Log Date:	

Depth Control Remarks

1. IDW used as Primary Depth Control.
2. Z-Chart used as backup.
3.
4.
5.
6.

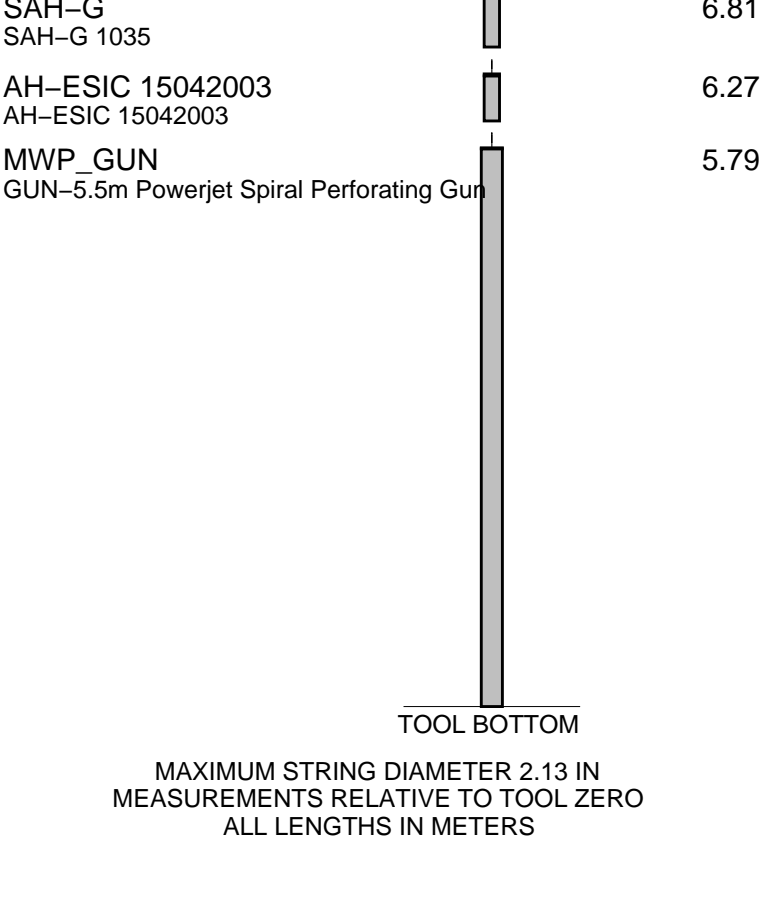
DISCLAIMER

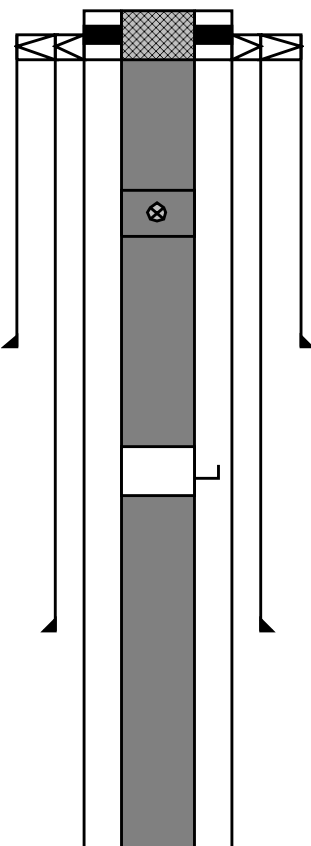
THE USE OF AND RELIANCE UPON THIS RECORDED-DATA BY THE HEREIN NAMED COMPANY (AND ANY OF ITS AFFILIATES, PARTNERS, REPRESENTATIVES, AGENTS, CONSULTANTS AND EMPLOYEES) IS SUBJECT TO THE TERMS AND CONDITIONS AGREED UPON BETWEEN SCHLUMBERGER AND THE COMPANY, INCLUDING: (a) RESTRICTIONS ON USE OF THE RECORDED-DATA; (b) DISCLAIMERS AND WAIVERS OF WARRANTIES AND REPRESENTATIONS REGARDING COMPANY'S USE OF AND RELIANCE UPON THE RECORDED-DATA; AND (c) CUSTOMER'S FULL AND SOLE RESPONSIBILITY FOR ANY INFERENCE DRAWN OR DECISION MADE IN CONNECTION WITH THE USE OF THIS RECORDED-DATA.

OTHER SERVICES1
OS1: None
OS2:
OS3:
OS4:
OS5:

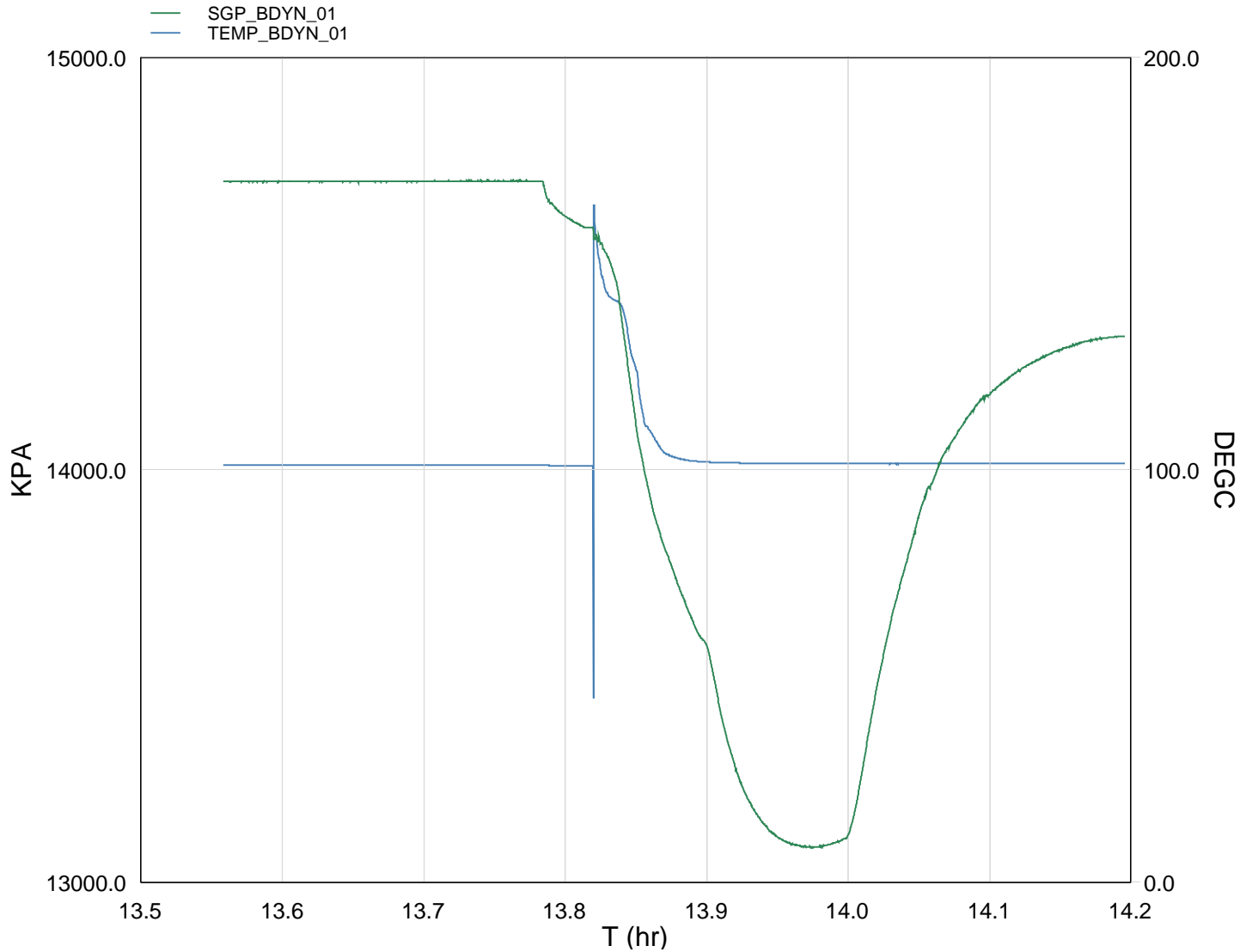
REMARKS: RUN NUMBER 1
Log correlated to ExxonMobil Solar Composite Log supplied with logging program.
Objectives: Perforate the well over the interval 3369.5m to 3375m MDKB
using a 5.5mt 2-1/8" 6 SPF, Powerjet Spiral gun with MWPT.
Maximum Deviation = 64deg @ 1834m MDKB
Gun Fired @ 3369.5m to 3375m MDKB
CCL to Top Shot = 3 m

CCL Stop Depth @ 3366.5 m MDKB					
Before Gun – SBHT: 214 Degf SBHP: 2132Psia					
After Gun – SBHT: 215 Degf SBHP: 2070Psia					
Slick Line HUD: 3393m MDKB					
HUD not tagged with Perforating Gun .					
Schlumberger crews: John Light , Gary Blandford					
RUN 1			RUN 2		
SERVICE ORDER #: PROGRAM VERSION: FLUID LEVEL:			SERVICE ORDER #: PROGRAM VERSION: FLUID LEVEL:		
AUSL08356994 15C0-309 0 m					
LOGGED INTERVAL	START	STOP	LOGGED INTERVAL	START	STOP
EQUIPMENT DESCRIPTION					
RUN 1			RUN 2		
SURFACE EQUIPMENT					
MWPM-AA					
DOWNHOLE EQUIPMENT					



Production String	(in)		(m)	Well Schematic	(m)	(in)		Casing String
	OD	ID	MD		MD	OD	ID	
Tubing Hanger Tubing	7.000	3.500	12.8		17.6	13.375	12.615	Casing String Liner Hanger
	3.500		12.8		17.6	13.375	9.675	
Shutin Valve	3.500		451.0					
					695.0	13.375	12.615	Casing Shoe
Gas Lift Mandrel	3.500		1013.0					
					1306.0	9.675		Casing Shoe

MAXIS Field Log



TIME	KPA	PSIA	DEGF
5490.0	14699.1293	2131.9327	214.1036
5520.0	14700.2343	2132.0930	214.1036
5550.0	14698.5465	2131.8482	214.1010
5580.0	14700.0568	2132.0672	214.0993
5610.0	14699.5785	2131.9979	214.0905
5640.0	14699.7725	2132.0260	214.0907
5670.0	14699.7274	2132.0194	214.0920
5700.0	14700.1600	2132.0822	214.0876
5730.0	14699.4436	2131.9783	214.0916
5760.0	14699.9804	2132.0561	214.0876
5790.0	14698.1138	2131.7854	214.0871
5820.0	14700.0124	2132.0608	214.0871

5820.0	14700.0124	2132.0608	214.0871	
5850.0	14700.5641	2132.1408	214.0767	
5880.0	14699.5785	2131.9979	214.0790	
5910.0	14699.7274	2132.0194	214.0685	
5940.0	14700.5641	2132.1408	214.0784	
5970.0	14699.9964	2132.0585	214.0700	
6000.0	14699.7877	2132.0282	214.0756	
6030.0	14700.3996	2132.1169	214.0765	
6060.0	14700.8775	2132.1863	214.0784	
6090.0	14701.3852	2132.2599	214.0779	
6120.0	14700.2494	2132.0952	214.0790	
6150.0	14700.9373	2132.1949	214.0805	
6180.0	14700.0124	2132.0608	214.0748	
6210.0	14700.8775	2132.1863	214.0779	
6240.0	14699.9226	2132.0478	214.0774	
6270.0	14700.6092	2132.1473	214.0784	Open Wing Valve
6300.0	14690.9135	2130.7411	214.0728	
6330.0	14636.1822	2122.8030	213.9082	
6360.0	14612.5251	2119.3718	213.8788	
6390.0	14595.6052	2116.9178	213.8996	
6420.0	14587.8599	2115.7944	213.9069	
6450.0	14543.7302	2109.3940	296.1521	Fire Gun
6480.0	14473.1080	2099.1511	286.2323	
6510.0	14288.9005	2072.4340	276.6346	
6540.0	14080.7336	2042.2419	253.7949	
6570.0	13941.1822	2022.0016	229.2768	
6600.0	13835.3144	2006.6468	221.1175	
6630.0	13757.6791	1995.3868	217.7648	
6660.0	13680.4873	1984.1910	216.4616	
6690.0	13612.0510	1974.2652	215.7847	
6720.0	13559.5352	1966.6484	215.4603	
6750.0	13418.2802	1946.1611	215.2309	
6780.0	13306.9156	1930.0090	215.1333	
6810.0	13224.6345	1918.0752	215.0248	
6840.0	13169.6072	1910.0942	214.9463	
6870.0	13131.2854	1904.5360	214.8840	
6900.0	13107.4534	1901.0795	214.8641	
6930.0	13094.0423	1899.1344	214.8702	
6960.0	13086.6489	1898.0621	214.8704	
6990.0	13086.3968	1898.0255	214.8387	Close Wing Valve
7020.0	13089.6437	1898.4964	214.8114	
7050.0	13099.5350	1899.9310	214.7925	
7080.0	13126.5536	1903.8498	214.7776	
7110.0	13261.3546	1923.4010	214.7722	
7140.0	13428.2895	1947.6128	214.7539	
7170.0	13572.1957	1968.4847	214.7001	
7200.0	13693.3518	1986.0569	214.7050	
7230.0	13797.6984	2001.1911	214.7306	
7260.0	13904.2151	2016.6400	214.7681	
7290.0	13970.3990	2026.2392	214.8266	
7320.0	14039.5266	2036.2653	214.8775	
7350.0	14082.4708	2042.4938	214.8871	
7380.0	14128.2604	2049.1352	214.8838	
7410.0	14167.0530	2054.7615	214.8973	
7440.0	14187.5345	2057.7322	214.8826	
7470.0	14211.7403	2061.2429	214.8775	
7500.0	14234.1203	2064.4888	214.8913	
7530.0	14252.9497	2067.2198	214.8726	
7560.0	14267.4932	2069.3292	214.8709	
7590.0	14281.5858	2071.3731	214.8721	
7620.0	14293.5309	2073.1056	214.8647	
7650.0	14302.0278	2074.4685	214.8640	

7630.0	14302.9278	2074.4683	214.8649
7680.0	14311.6841	2075.7385	214.8566
7710.0	14317.7363	2076.6163	214.8617
7740.0	14321.2152	2077.1209	214.8479
7770.0	14323.2332	2077.4136	214.8508



Gun Shoot Pass

MAXIS Field Log

Company: Esso Australia Pty Ltd. Well: W-8a

Output DLIS Files

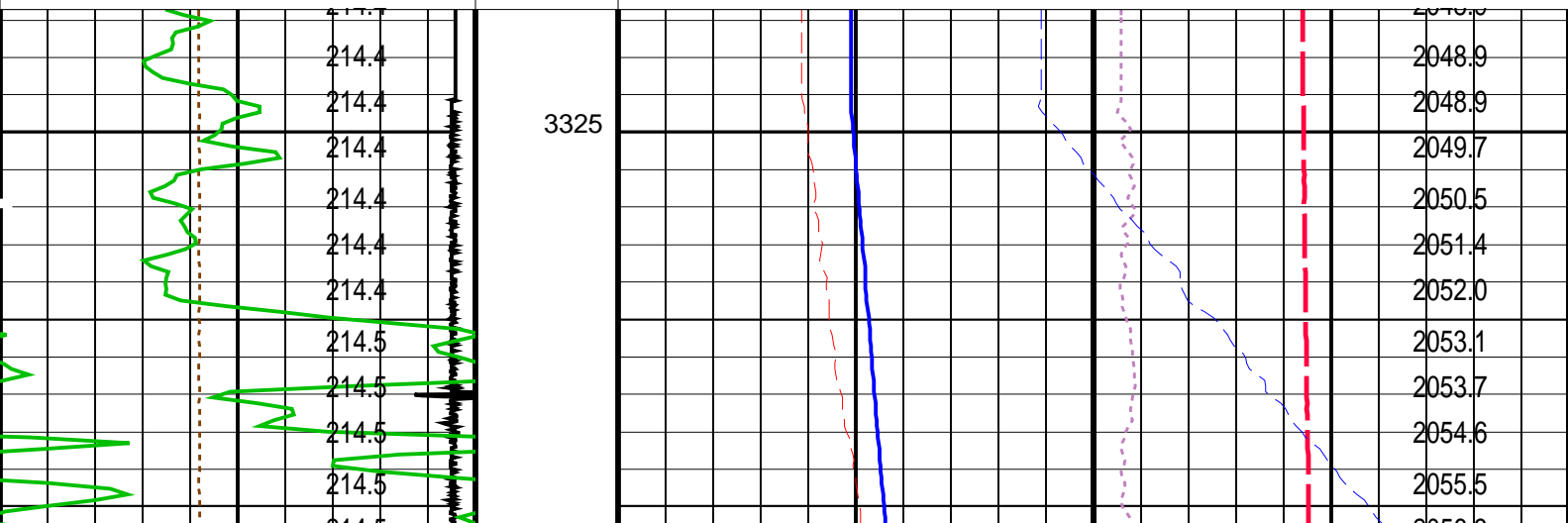
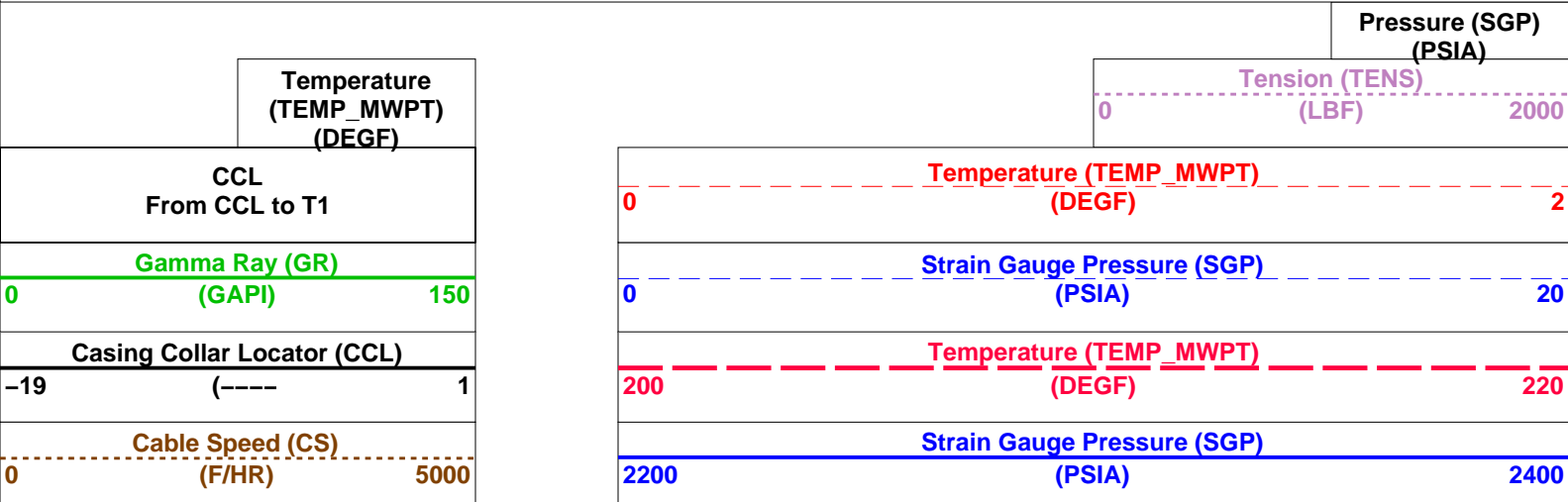
DEFAULT PERFO_014LUP FN:13 PRODUCER 26-Sep-2008 13:30 3380.4 M 3321.7 M

OP System Version: 15C0-309
MCM

MWP_GUN	SRPC-3546-Q1_2008_OP15	MWPT-CA	SRPC-3546-Q1_2008_OP15
MWGT-AA	SRPC-3546-Q1_2008_OP15		

PIP SUMMARY

Time Mark Every 60 S



(TEMP_MWPT)
(DEGF)

0(LBF)2000

Pressure (SGP)
(PSIA)

PIP SUMMARY

Time Mark Every 60 S

Parameters

DLIS Name	Description	Value
MWPT-CA: MEASUREMENT WHILE PERFORATING TOOL		
DEVI_FL_CORR	Deviation Angle for Flow Line Correction	0 DEG
FLD	Flow Line Density	1 G/C3
MWPT_NULL_SOURCE	MWPT NULL Temperature Source	TEMS
MWPT_NULL_TEMP	MWPT NULL Temperature	0.0 DEGC

Format: MWP Vertical Scale: 1:200 Graphics File Created: 26-Sep-2008 13:30

OP System Version: 15C0-309
MCM

MWP_GUN	SRPC-3546-Q1_2008_OP15	MWPT-CA	SRPC-3546-Q1_2008_OP15
MWGT-AA	SRPC-3546-Q1_2008_OP15		

Output DLIS Files

DEFAULT	PERFO_014LUP	FN:13	PRODUCER	26-Sep-2008 13:30
---------	--------------	-------	----------	-------------------

Schlumberger

Gun Correlation Pass

MAXIS Field Log

Company: Esso Australia Pty Ltd. Well: W-8a

Output DLIS Files

DEFAULT	PERFO_012LUP	FN:11	PRODUCER	26-Sep-2008 13:16	3385.7 M	3320.5 M
---------	--------------	-------	----------	-------------------	----------	----------

OP System Version: 15C0-309
MCM

MWP_GUN	SRPC-3546-Q1_2008_OP15	MWPT-CA	SRPC-3546-Q1_2008_OP15
MWGT-AA	SRPC-3546-Q1_2008_OP15		

PIP SUMMARY

Time Mark Every 60 S

Temperature
(TEMP_MWPT)
(DEGF)

CCL
From CCL to T1

Gamma Ray (GR)
(GAPI)

Casing Collar Locator (CCL)

Cable Speed (CS)

Pressure (SGP)
(PSIA)

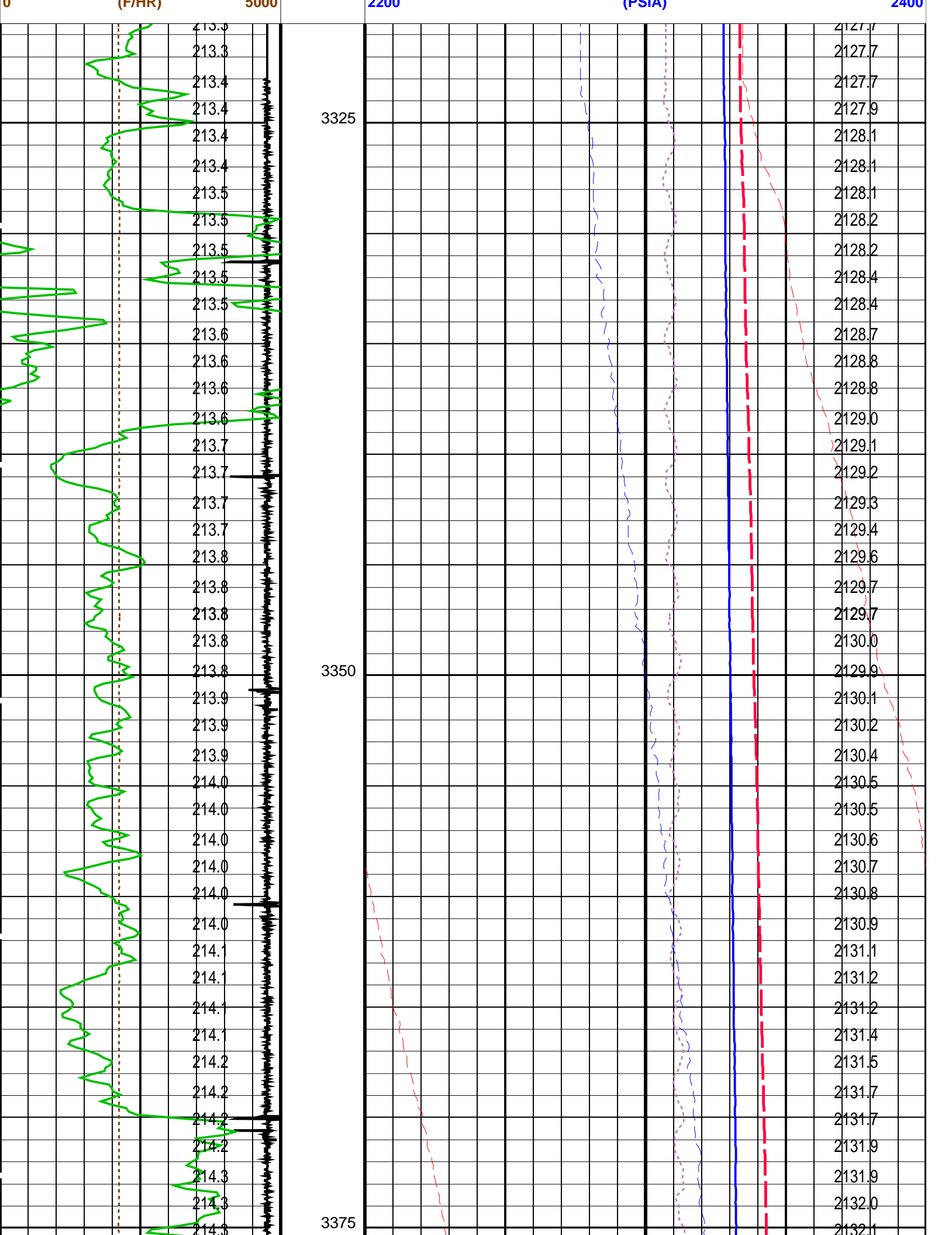
Tension (TENS)
(LBF)

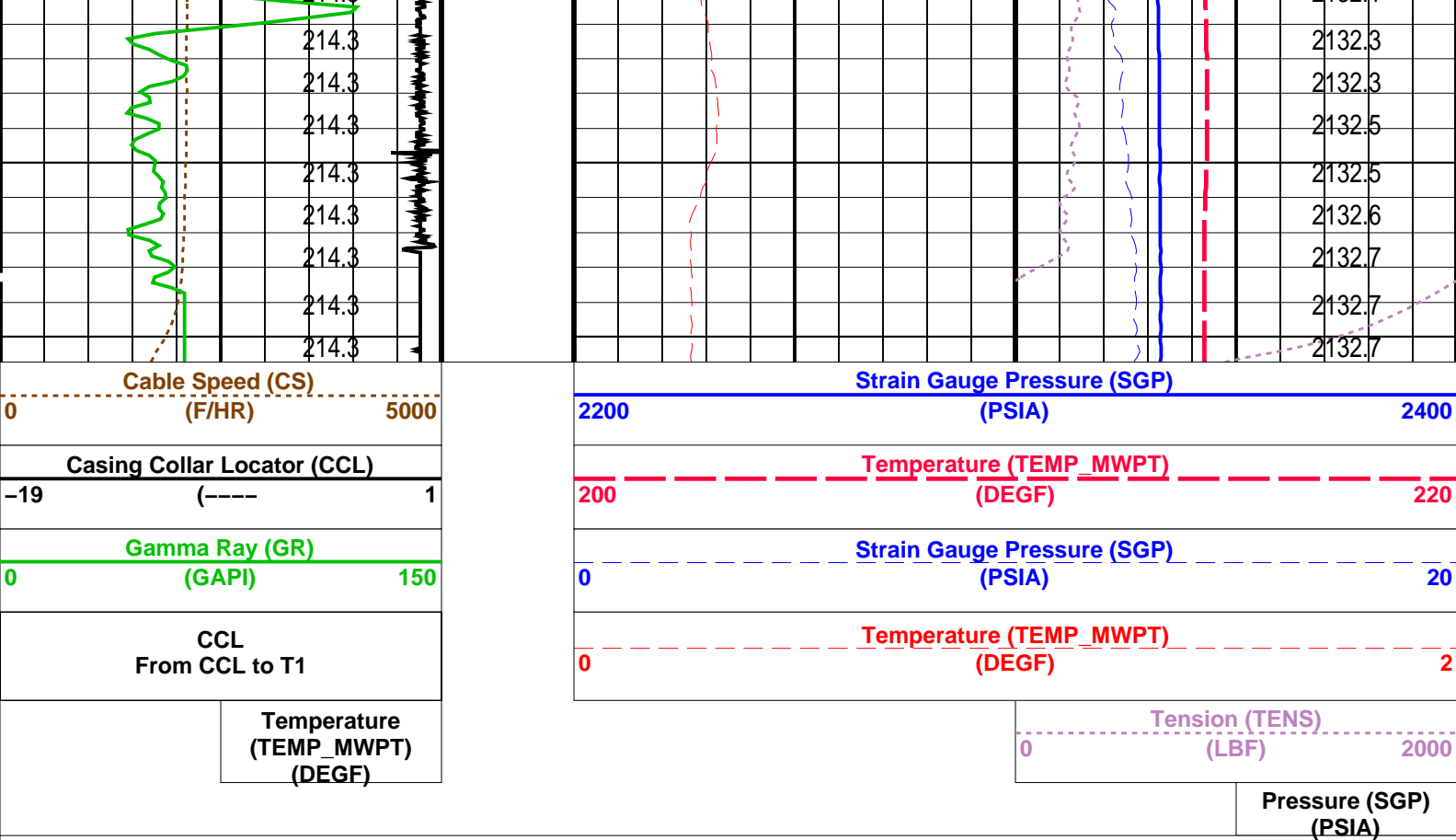
Temperature (TEMP_MWPT)
(DEGF)

Strain Gauge Pressure (SGP)
(PSIA)

Temperature (TEMP_MWPT)
(DEGF)

Strain Gauge Pressure (SGP)
(PSIA)





Time Mark Every 60 S

Parameters		
DLIS Name	Description	Value
MWPT-CA: MEASUREMENT WHILE PERFORATING TOOL		
DEVI_FL_CORR	Deviation Angle for Flow Line Correction	0 DEG
FLD	Flow Line Density	1 G/C3
MWPT_NULL_SOURCE	MWPT NULL Temperature Source	TEMS
MWPT_NULL_TEMP	MWPT NULL Temperature	0.0 DEGC

Format: MWP Vertical Scale: 1:200 Graphics File Created: 26-Sep-2008 13:16

OP System Version: 15C0-309			
MCM			
MWP_GUN	SRPC-3546-Q1_2008_OP15	MWPT-CA	SRPC-3546-Q1_2008_OP15
MWGT-AA	SRPC-3546-Q1_2008_OP15		

Output DLIS Files			
DEFAULT	PERFO_012LUP	FN:11	PRODUCER 26-Sep-2008 13:16

Company: **Esso Australia Pty Ltd.**

Well: **W-8a**

Field: **West Tuna**

Rig: **Crane / Prod 4**

Country: **Australia**

Schlumberger

2-1/8" Powerjet Spiral
Perforation Record