

Company: Esso Australia Pty Ltd

Well: SNA-A11A ST1

Field: Snapper

Rig: Nabros 175

Country: Australia

GR-CCL

MAXR on Drillpipe Correlation Log

6-Nov-2008

GDA94/MGA94Zone65

N: 5,772,182.764 m

E: 589,787.584 m

Elev.: D.F. 41.70 m

G.L. -55.00 m

D.F. 41.70 m

LOCATION

Permanent Datum: GROUND LEVEL

Log Measured From: Drill Floor

Drilling Measured From: Drill Floor

State: Victoria

Max. Well Deviation 84.45 deg

Longitude 148 1' 31.373" E

Latitude 38 11' 37.762" S

Rig: Nabros 175

Field: Snapper

Location: GDA94/MGA94Zone55

Well: SNA-A11A ST1

Company: Esso Australia Pty Ltd

PVT DATA			
Oil Density	Run 1	Run 2	Run 3
Water Salinity			
Gas Gravity			
Bo			
Bw			
1/Bq			
Bubble Point Pressure			
Bubble Point Temperature			
Solution GOR			
Maximum Deviation	84.45 deg		
CEMENTING DATA			
Primary/Squeeze	Primary		
Casing String No			
Lead Cement Type			
Volume			
Density			
Water Loss			
Additives			
Tail Cement Type			
Volume			
Density			
Water Loss			
Additives			
Expected Cement Top			
Logging Date			
Run Number			
Depth Driller			
Schlumberger Depth			
Bottom Log Interval			
Top Log Interval			
Casing Fluid Type			
Salinity			
Density			
Fluid Level			
BIT/CASING/TUBING STRING			
Bit Size			
From			
To			
Casing/Tubing Size			
Weight			
Grade			
From			
To			
Maximum Recorded Temperatures			
Logger On Bottom	Time		
Unit Number	Location		
Recorded By			
Witnessed By			

Logging Date6-Nov-2008

Run Number1

Depth Driller5215 m

Schlumberger DepthNot Tagged

Bottom Log Interval5000 m

Top Log Interval4805 m

Casing Fluid TypeInhibited Seawater

Salinity

Density1.04 g/cm3

Fluid Level0 m

BIT/CASING/TUBING STRING

Bit Size8.500 in

From4358 m

To5215 m

Casing/Tubing Size7.000 in

Weight26 lbm/ft

GradeL80

From4087 m

To5197 m

Maximum Recorded Temperatures

Logger On Bottom6-Nov-2008Time10:30

Unit Number3829LocationAUSL

Recorded ByMalik J / C.Rowand

Witnessed ByMr G. Doty / Mr A. Zemov

Logging Date

Run Number

Depth Driller

Schlumberger Depth

Bottom Log Interval

Top Log Interval

Casing Fluid Type

Salinity

Density

Fluid Level

BIT/CASING/TUBING STRING

Bit Size

From

To

Casing/Tubing Size

Weight

Grade

From

To

Maximum Recorded Temperatures

Logger On BottomTime

Unit NumberLocation

Recorded By

Witnessed By

Run 4

Date Created: 6-NOV-2008 11:17:17

Logging Cable

Type:	7-46ZV XS
Serial Number:	707379
Length:	5800 M
<hr/>	
Conveyance Method:	Wireline
Rig Type:	Offshore Fixed

Log Sequence:	Subsequent Trip To the Well
Reference Log Name:	SNA A11A-ST LWD (EcoScope) RT 200 MD
Reference Log Run Number:	1
Reference Log Date:	27-Oct-2008
Subsequent Trip Down Log Correction:	N/A

1. All Schlumberger Depth Control Procedures followed
2. IDW used as a primary depth measurement , Z Chart as a Secondary
- 3.
- 4.
- 5.
- 6.

THE USE OF AND RELIANCE UPON THIS RECORDED-DATA BY THE HEREIN NAMED COMPANY (AND ANY OF ITS AFFILIATES, PARTNERS, REPRESENTATIVES, AGENTS, CONSULTANTS AND EMPLOYEES) IS SUBJECT TO THE TERMS AND CONDITIONS AGREED UPON BETWEEN SCHLUMBERGER AND THE COMPANY, INCLUDING: (a) RESTRICTIONS ON USE OF THE RECORDED-DATA; (b) DISCLAIMERS AND WAIVERS OF WARRANTIES AND REPRESENTATIONS REGARDING COMPANY'S USE OF AND RELIANCE UPON THE RECORDED-DATA; AND (c) CUSTOMER'S FULL AND SOLE RESPONSIBILITY FOR ANY INFERENCE DRAWN OR DECISION MADE IN CONNECTION WITH THE USE OF THIS RECORDED-DATA.

OS1:	None
OS2:	
OS3:	
OS4:	
OS5:	






Pump down operation was utilized to assist the tool going down at high deviation.

Correlated MAXB String with Pintag at 4947.20 m MDKB

Day Crew : Malik,Tony Goodwin , Max
Night Crew: Chris,Daniel Hiskins , Brendon

RUN 1			RUN 2		
SERVICE ORDER #:			SERVICE ORDER #:		
PROGRAM VERSION:			PROGRAM VERSION:		
FLUID LEVEL:			FLUID LEVEL:		
LOGGED INTERVAL	START	STOP	LOGGED INTERVAL	START	STOP

EQUIPMENT DESCRIPTION					
RUN 1			RUN 2		

SURFACE EQUIPMENT		
WITM (SHM)		
DOWNHOLE EQUIPMENT		
MH-PEH-EF MH-PEH-EF 1004		6.44
AH-38 AH-38		5.96
EQF-46 EQF-46 3002		5.65
EQF-38 EQF-38 3009		3.83
EQF-38		2.60

EQF-38 3010

UPCT-A
UPCC-A 306
UPCH-A 304

Gamma Ray

Casing Co
Tension

SHM_GUN

TOOL BOTTOM

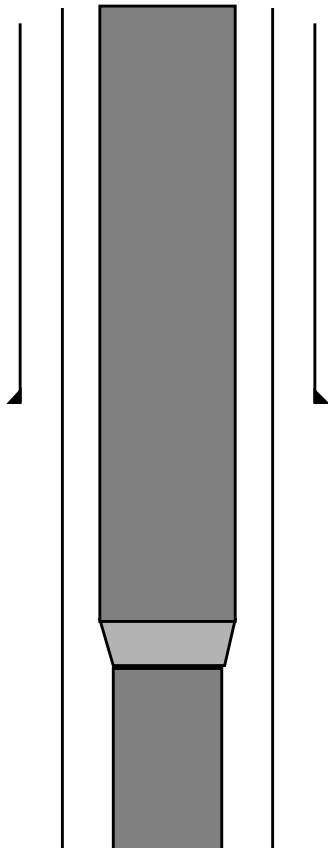
1.37

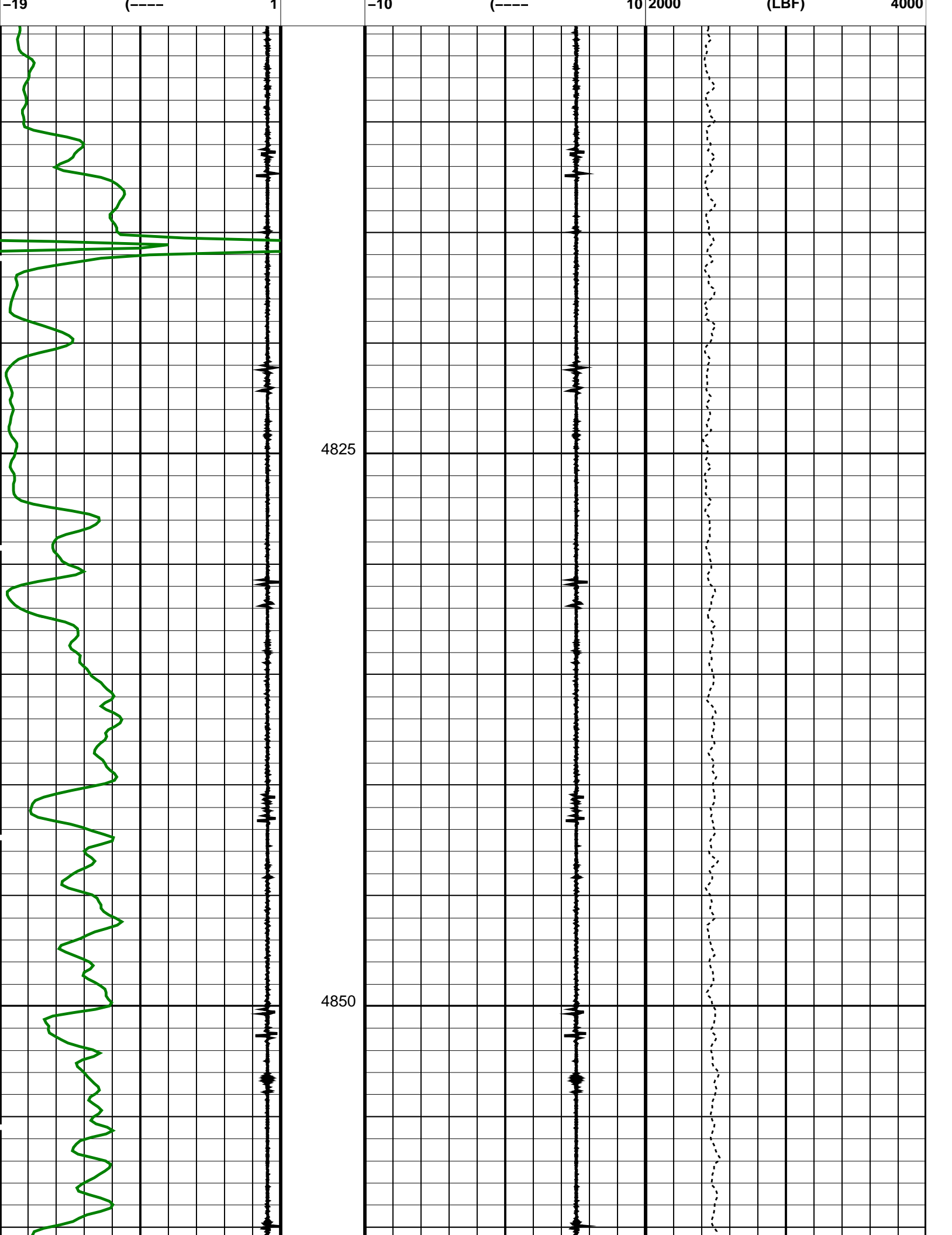
0.79

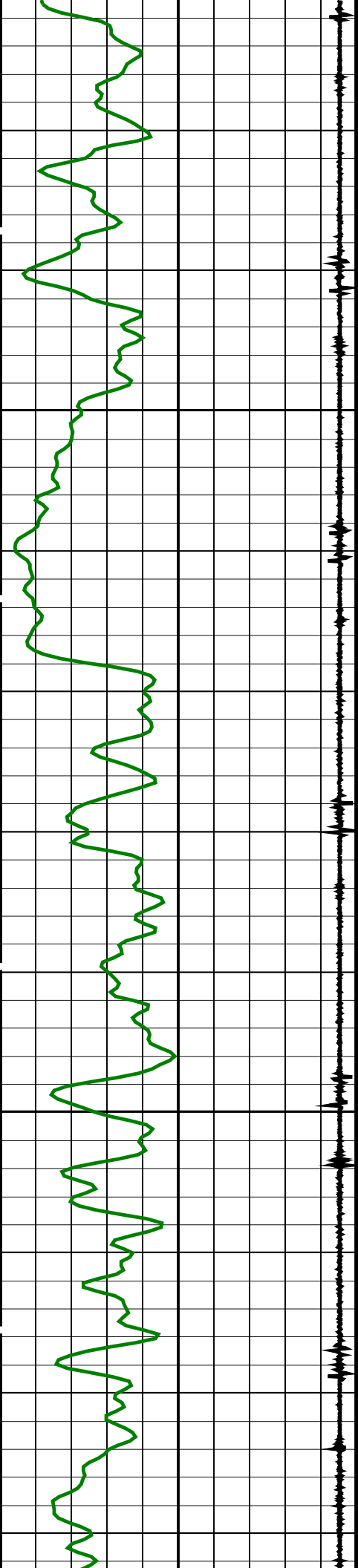
TOOL ZERO

0.00

MAXIMUM STRING DIAMETER 2.13 IN
MEASUREMENTS RELATIVE TO TOOL ZERO
ALL LENGTHS IN METERS

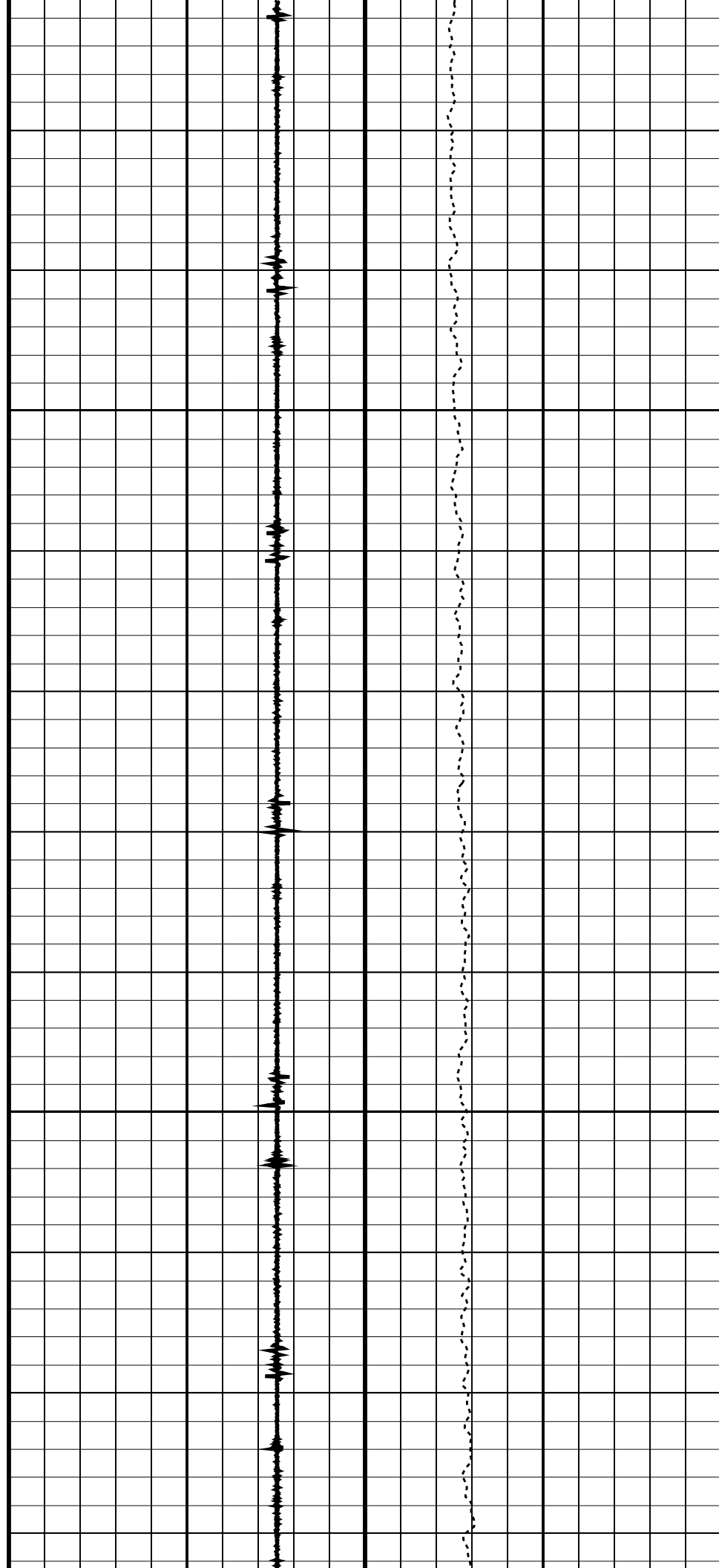
Production String	(in)			(m)	Well Schematic	(m)	(in)			Casing String
	OD	ID	MD			MD	OD	ID		
5-1/2" DrillPipe	5.500						10.750 13.375		Casing String	
Crossover Joint	5.500	4.500			912.6		13.375		Casing Shoe	
4-1/2" DrillPipe	4.500									

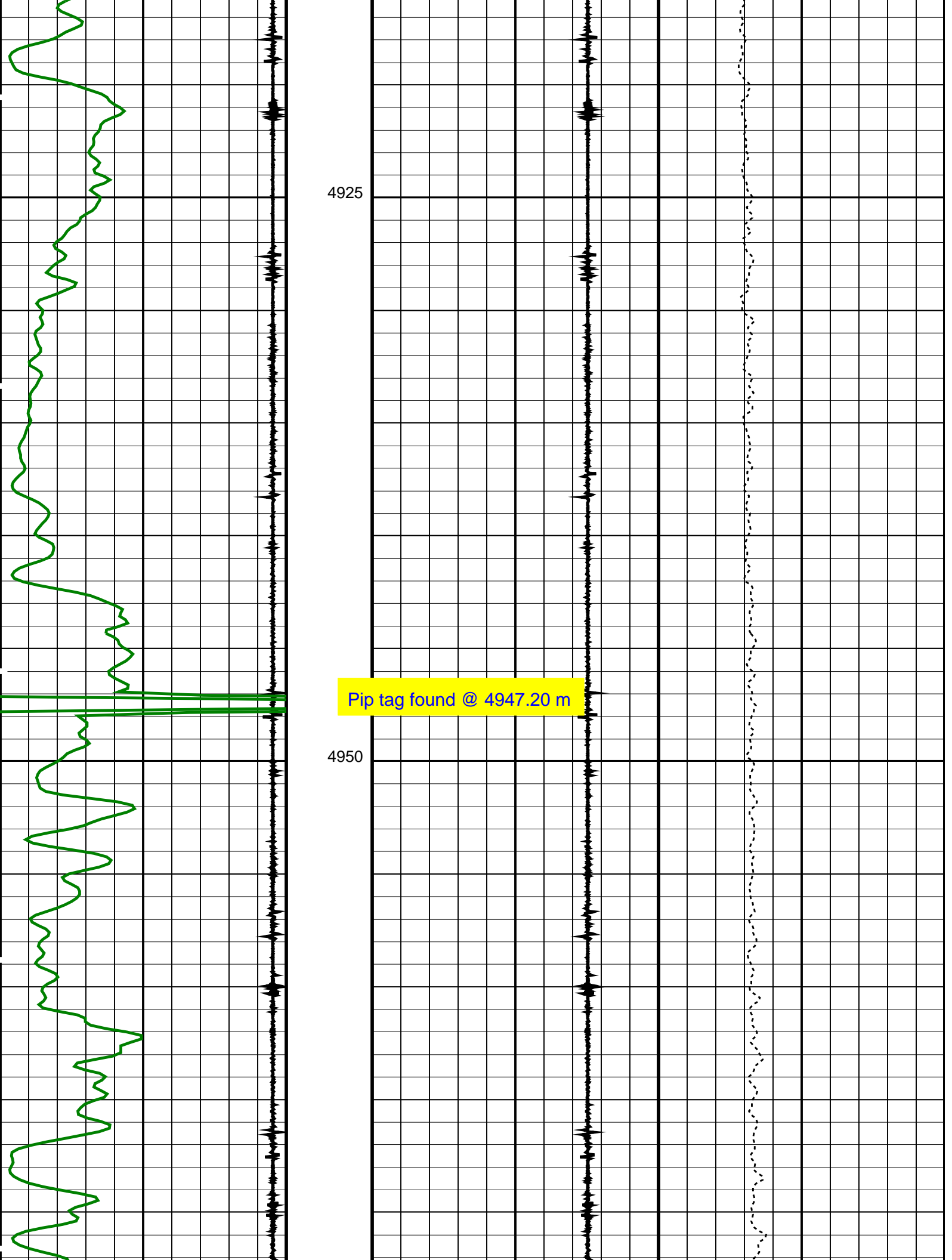


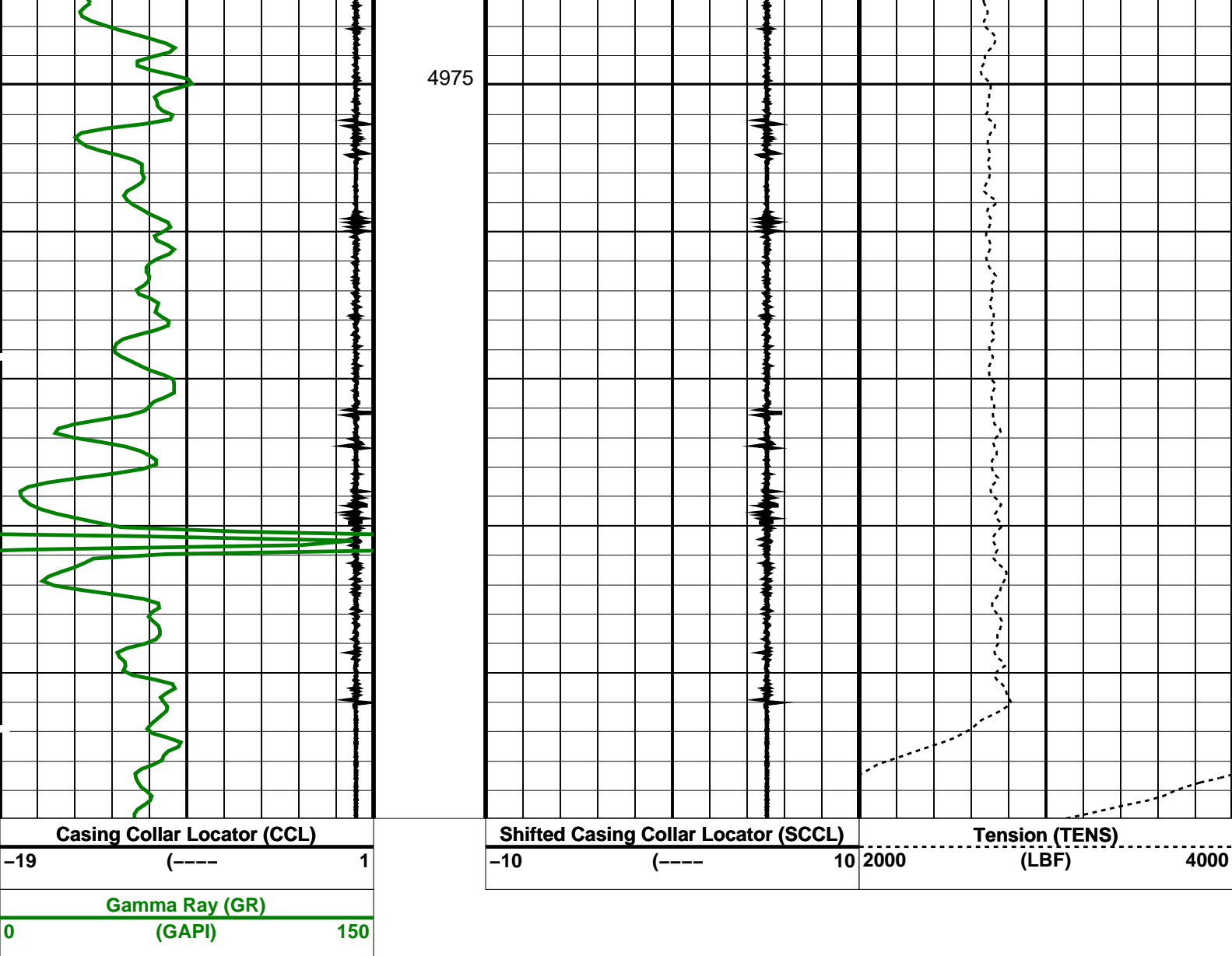


4875

4900







PIP SUMMARY

Time Mark Every 60 S

Format: GR-Correlation Vertical Scale: 1:200

Graphics File Created: 06-Nov-2008 10:44

OP System Version: 16C0-147

MCM

SHM_GUN 16C0-147

UPCT-A

16C0-147

Output DLIS Files

DEFAULT PERFO_020LUP

FN:23 PRODUCER 06-Nov-2008 10:44

Company: Esso Australia Pty Ltd

Schlumberger

Well: SNA-A11A ST1

Field: Snapper

Rig: Nabros 175

Country: Australia

GR-CCL
MAXR on Drillpipe Correlation Log
6-Nov-2008

