

Company: Esso Australia Pty Ltd

Well: MKA A22

Field: Mackereel

Rig: Rig 22/Prod 2

Country: Australia

2.5" Powercutter
Tubing Cut Record
11-Nov-2009

Bass Strait
Gippsland
Basin

Elev.: K.B. 39.50 m
G.L. -93.00 m
D.F. 39.50 m

Permanent Datum:
Log Measured From:
Drilling Measured From:

GROUND LEVEL
D.F.
K.B.

Elev.: -34.20 m
above Perm. Datum

Rig: Rig 22/Prod 2

Field: Mackereel

Location: Bass Strait

Well: MKA A22

Company: Esso Australia Pty Ltd

LOCATION

State:
Victoria

Max. Well Deviation
71 deg

Longitude
148° 20' 28.54" E

Latitude
038° 28'50.13" S

Logging Date	12-Nov-2009			
Run Number	1			
Depth Driller	4885 m			
Schlumberger Depth	4536 m			
Bottom Log Interval	4536 m			
Top Log Interval	4400 m			
Casing Fluid Type	Inhibited Sea Water			
Salinity				
Density	8.55 g/cm3			
Fluid Level	0 m			
BIT/CASING/TUBING STRING				
Bit Size	8.500 in			
From	4481 m			
To	4885 m			
Casing/Tubing Size	3.500 in			
Weight	40.5 lbm/ft			
Grade	L-80			
From	23.46 m			
To	4657 m			
Maximum Recorded Temperatures				
Logger On Bottom	Time		7:21	
Unit Number	Location	3827 AUSL		
Recorded By	M.Pratt, S. Gilbert			
Witnessed By	J. Digiovanni, A. Smythe			

			Run 1
PVT DATA			
Oil Density			
Water Salinity			
Gas Gravity			
Bo			
Bw			
1/Bg			
Bubble Point Pressure			
Bubble Point Temperature			
Solution GOR			
Maximum Deviation	71 deg		
CEMENTING DATA			
Primary/Squeeze	Primary		
Casing String No			
Lead Cement Type			
Volume			
Density			
Water Loss			
Additives			
Tail Cement Type			
Volume			
Density			
Water Loss			
Additives			
Expected Cement Top			
Logging Date			
Run Number			
Depth Driller			
Schlumberger Depth			
Bottom Log Interval			
Top Log Interval			
Casing Fluid Type			
Salinity			
Density			
Fluid Level			
BIT/CASING/TUBING STRING			
Bit Size			
From			
To			
Casing/Tubing Size			
Weight			
Grade			
From			
To			
Maximum Recorded Temperatures			
Logger On Bottom	Time		
Unit Number	Location		
Recorded By			
Witnessed By			

DEPTH SUMMARY LISTING

Date Created: 12-NOV-2009 3:46:06

Depth System Equipment

Depth Measuring Device	Tension Device	Logging Cable
Type: IDW-C Serial Number: 796 Calibration Date: 11-Nov-2009 Calibrator Serial Number: 30 Calibration Cable Type: 2-32ZT Wheel Correction 1: -1 Wheel Correction 2: 1	Type: CMTD-B/A Serial Number: 1711 Calibration Date: 04-MAR-200 Calibrator Serial Number: 1173 Number of Calibration Points: 0	Type: 2-32ZT Serial Number: 24187 Length: 6043 M Conveyance Method: Wireline Rig Type: Offshore Fixed

Depth Control Parameters

Log Sequence: Subsequent Log In the Well
Reference Log Name:
Reference Log Run Number:
Reference Log Date:

Depth Control Remarks

1. Log correlated to Exxon Mobile tubing Tally incorporated in approved program
2. IDW used as primary depth control
3. Z-chart used as backup.
4. CMTD calibration: a=1.32E-5, B=0.8513, & C=2.868
5. Full Pressure Gear Used
6.

DISCLAIMER





THE USE OF AND RELIANCE UPON THIS RECORDED-DATA BY THE HEREIN NAMED COMPANY (AND ANY OF ITS AFFILIATES, PARTNERS, REPRESENTATIVES, AGENTS, CONSULTANTS AND EMPLOYEES) IS SUBJECT TO THE TERMS AND CONDITIONS AGREED UPON BETWEEN SCHLUMBERGER AND THE COMPANY, INCLUDING: (a) RESTRICTIONS ON USE OF THE RECORDED-DATA; (b) DISCLAIMERS AND WAIVERS OF WARRANTIES AND REPRESENTATIONS REGARDING COMPANY'S USE OF AND RELIANCE UPON THE RECORDED-DATA; AND (c) CUSTOMER'S FULL AND SOLE RESPONSIBILITY FOR ANY INFERENCE DRAWN OR DECISION MADE IN CONNECTION WITH THE USE OF THIS RECORDED-DATA.

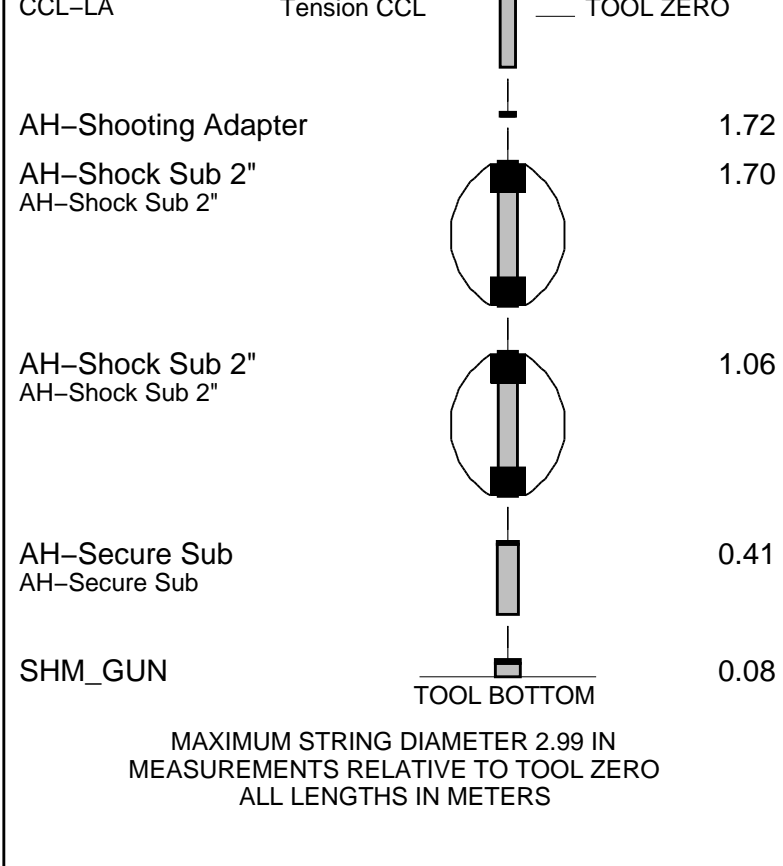
OTHER SERVICES1
OS1:
OS2:
OS3:
OS4:
OS5:
REMARKS: RUN NUMBER 1
Log correlated to Tubing Tally provided by client.
Objective: Cut production tubing above Packer @ 4536m MDKB
to recover tubing
RIH with 2.5" Powercutter to cut tubing @ 4536m MDKB. POOH
Max deviation 65 deg @ 1180 MDKB to TD. Maximum deviation
71 deg @ 4650m MDKB. Pump down may be required to reach cutting depth.

RUN 1 SERVICE ORDER #: 4500602421 PROGRAM VERSION: 17C0-154 FLUID LEVEL: 0 m					
LOGGED INTERVAL	START	STOP	LOGGED INTERVAL	START	STOP

	RUN 1	RUN 2
1	1	1
2	1	1
3	1	1
4	1	1
5	1	1
6	1	1
7	1	1
8	1	1
9	1	1
10	1	1
11	1	1
12	1	1
13	1	1
14	1	1
15	1	1
16	1	1
17	1	1
18	1	1
19	1	1
20	1	1
21	1	1
22	1	1
23	1	1
24	1	1
25	1	1
26	1	1
27	1	1
28	1	1
29	1	1
30	1	1
31	1	1
32	1	1
33	1	1
34	1	1
35	1	1
36	1	1
37	1	1
38	1	1
39	1	1
40	1	1
41	1	1
42	1	1
43	1	1
44	1	1
45	1	1
46	1	1
47	1	1
48	1	1
49	1	1
50	1	1
51	1	1
52	1	1
53	1	1
54	1	1
55	1	1
56	1	1
57	1	1
58	1	1
59	1	1
60	1	1
61	1	1
62	1	1
63	1	1
64	1	1
65	1	1
66	1	1
67	1	1
68	1	1
69	1	1
70	1	1
71	1	1
72	1	1
73	1	1
74	1	1
75	1	1
76	1	1
77	1	1
78	1	1
79	1	1
80	1	1
81	1	1
82	1	1
83	1	1
84	1	1
85	1	1
86	1	1
87	1	1
88	1	1
89	1	1
90	1	1
91	1	1
92	1	1
93	1	1
94	1	1
95	1	1
96	1	1
97	1	1
98	1	1
99	1	1
100	1	1

WITM (SHM)	
------------	--

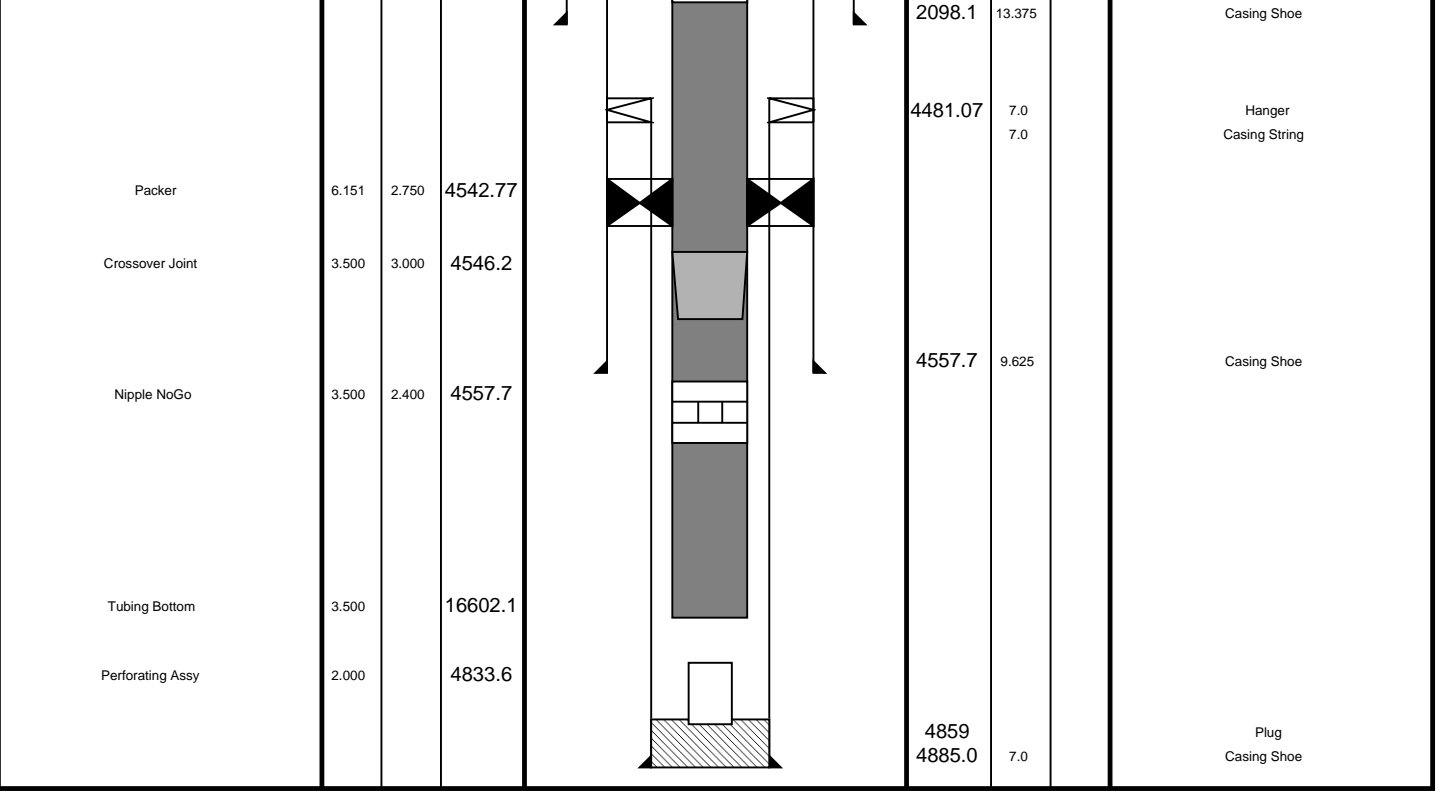
DOWNHOLE EQUIPMENT		
MH-22 MH-22		4.57
AH-38		4.09
EQF-43 EQF-43 201		4.00
CCL-LA		2.18



Client: Esso Australia Pty Ltd
Well: MKA A22
Field: Mackerel
State: Victoria
Country: Australia

Rig Name: Rig 22

Production String	(in)			Well Schematic	(ft)			Casing String
	OD	ID	MD		MD	OD	ID	
Derrick Floor Elevation from Tubing Hanger = 15.5m RKB to Tubing Hanger = 20.48m Tubing SSSV SPM LN MSP Equipment Nipple								Casing String
			447.8					
	3.500		988.1					
	3.500		1002.4					
	3.500		1587.3					
	3.500		4833.6					
	3.500		1603.6					



Job Events Summary

MAXIS Field Log

Schlumberger Job Event Summary							
		Time	Elapsed Time	Depth (M)		File	
Log Pass (up)	12-Nov-2009	7:52	000:04	4552.3	- 4516.5	PERFO_020LUP	
Log Pass (up)	12-Nov-2009	7:58	000:18	4550.2	- 4498.4	PERFO_021LUP	



2.5" Powercutter

Company: Esso Australia Pty Ltd

Well: MKA A22

Output DLIS Files

DEFAULT	PERFO_021LUP	FN:20	PRODUCER	12-Nov-2009 07:58	4550.2 M	4498.4 M
---------	--------------	-------	----------	-------------------	----------	----------

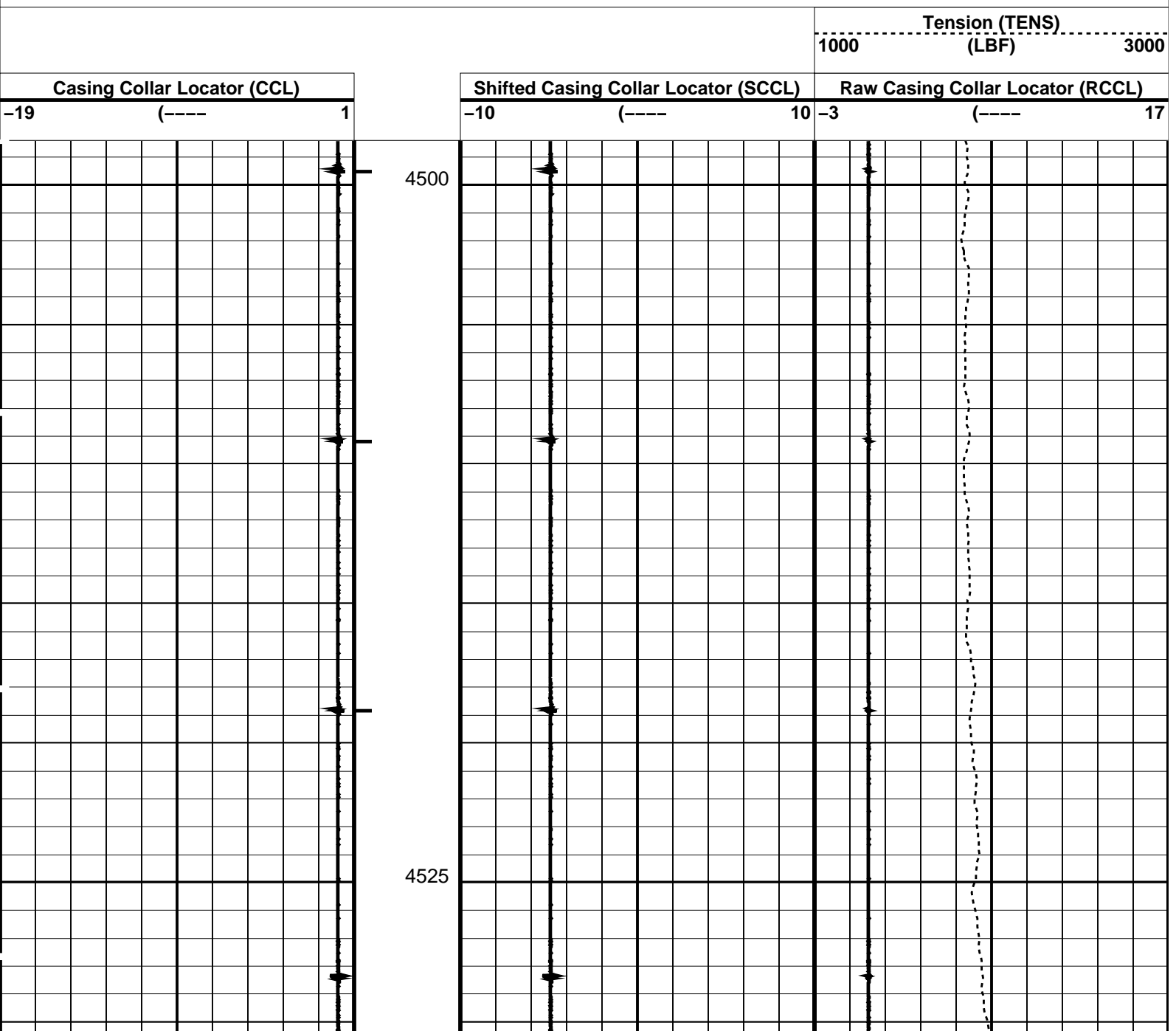
OP System Version: 17C0-154

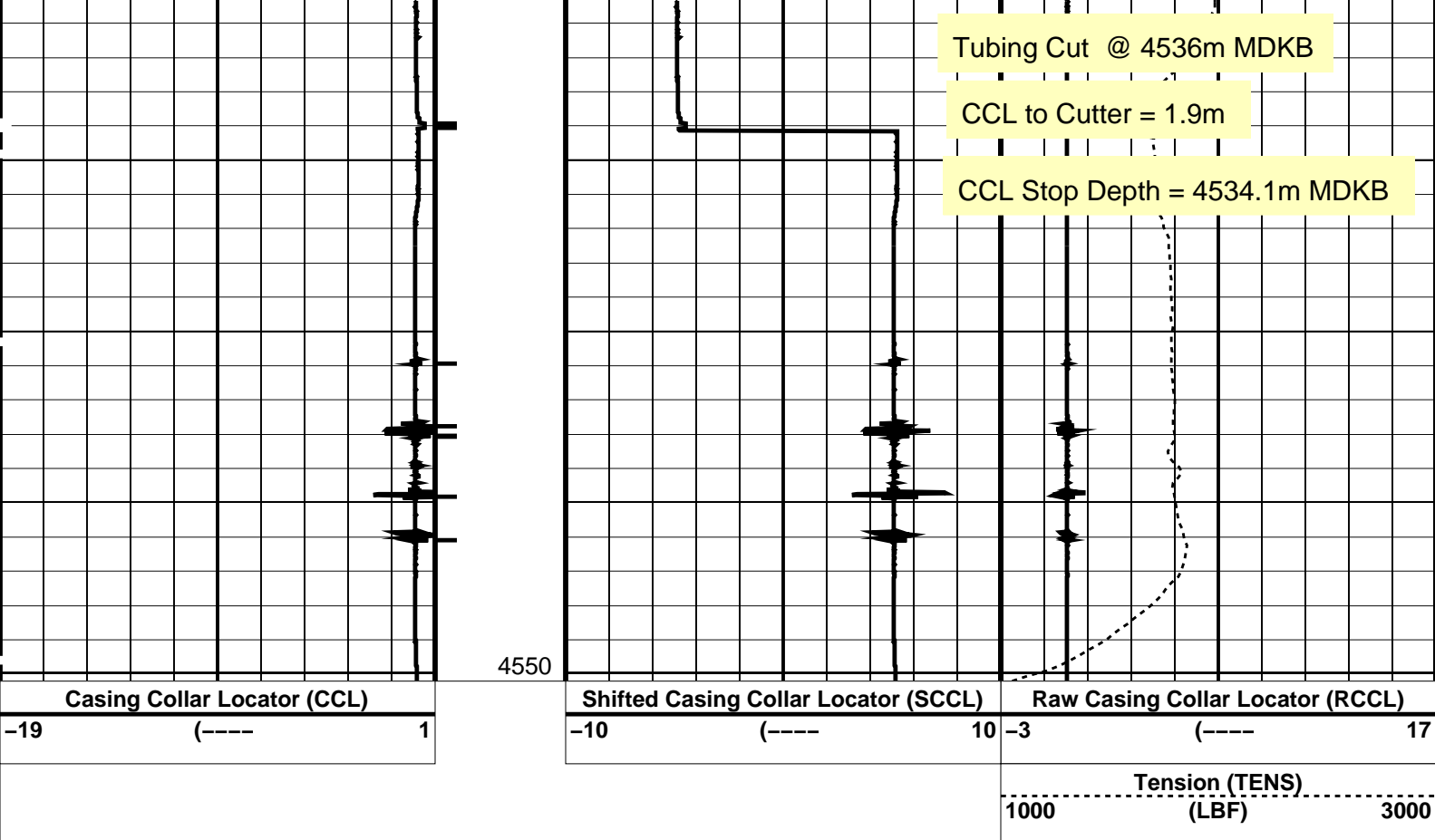
SHM_GUN	17C0-154	CCL-LA	17C0-154
---------	----------	--------	----------

PIP SUMMARY

└ Casing Collars

Time Mark Every 60 S





PIP SUMMARY

← Casing Collars

Time Mark Every 60 S

Parameters

DLIS Name	Description	Value
CCLD	CCL reset delay	12 IN
CCLT	CCL Detection Level	0.3 V

Format: PERFO Vertical Scale: 1:200

Graphics File Created: 12-Nov-2009 07:58

OP System Version: 17C0-154

SHM_GUN 17C0-154 CCL-LA 17C0-154

Output DLIS Files

DEFAULT PERFO_021LUP FN:20 PRODUCER 12-Nov-2009 07:58

Schlumberger

**2.5" Powercutter
Correlation Pass**

MAXIS Field Log

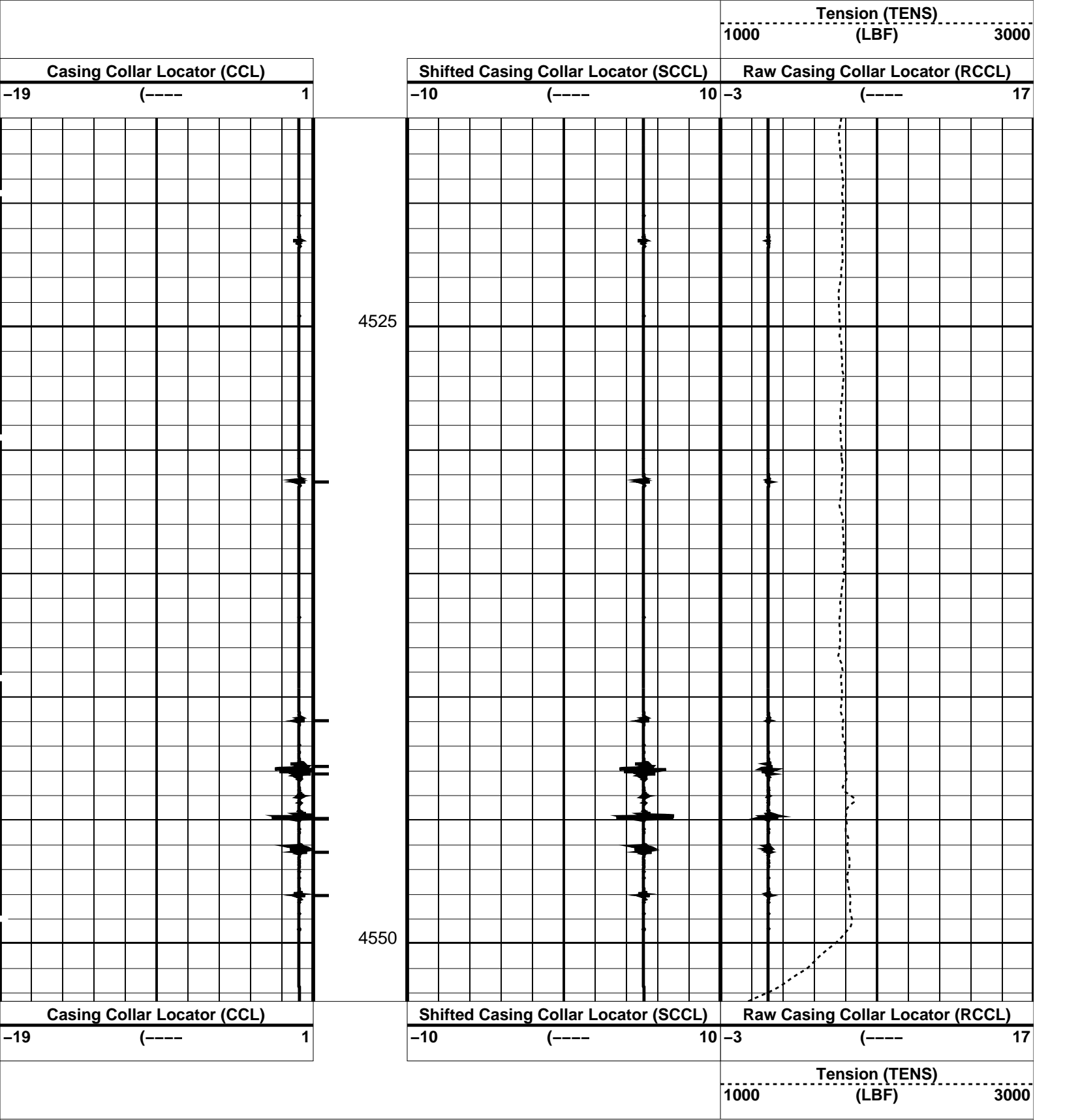
OP System Version: 17C0-154

SHM_GUN17C0-154CCL-LA17C0-154

PIP SUMMARY

Time Mark Every 60 S

Casing Collars



Time Mark Every 60 S

Casing Collars

Parameters

DLIS Name	Description	Value
CCLD	CCL-LA: Casing Collar Locator	12 IN
CCLT	CCL reset delay	0.3 V
	CCL Detection Level	

Format: PERFO Vertical Scale: 1:200 Graphics File Created: 12-Nov-2009 07:53

OP System Version: 17C0-154

SHM_GUN	17C0-154	CCL-LA	17C0-154
---------	----------	--------	----------

Output DLIS Files

DEFAULT	PERFO_020LUP	FN:19	PRODUCER	12-Nov-2009 07:52
---------	--------------	-------	----------	-------------------

Company:

Esso Australia Pty Ltd

Schlumberger

Well:

MKA A22

Field:

Mackerel

Rig:

Rig 22/Prod 2

Country:

Australia

2.5" Powercutter

Tubing Cut Record

11-Nov-2009