

<div>Schlumberger</div>												Run 1		Run 2			
Company: Esso Australia Pty Ltd										PVT DATA							
Well: CBA A28																	
Field: Cobia																	
Rig: 175																	
Country: Australia																	
Junk Basket with 6" Gauge Ring Production Tubing Correlation 29-July-09										LOCATION		Bass Strait		Elev.: K.B.			
												Gippsland		G.L.			
												D.F.					
Permanent Datum: MSL Log Measured From: Drill Floor Drilling Measured From: Drill Floor										Elev.: -79.00 m 120.00 m above Perm. Datum							
State: Victoria Max. Well Deviation 60.22 deg Longitude 48° 18' 32.995" E Latitude 28° 26' 57.465" S																	
Logging Date										29-Jul-2009							
Run Number										1,2 & 3							
Depth Driller										3995 m							
Schlumberger Depth										3803 m							
Bottom Log Interval										3958 m							
Top Log Interval										3768 m							
Casing Fluid Type										Brine							
Salinity																	
Density										8.55 g/cm3							
Fluid Level										0 m							
BIT/CASING/TUBING STRING																	
Bit Size										9.875 in							
From										587 m							
To										3995 m							
Casing/Tubing Size										3.500 in							
Weight										26 lbm/ft							
Grade										13CR80							
From										21.13 m							
To										3805 m							
Maximum Recorded Temperatures																	
Logger On Bottom										Time		29-Jul-2009		16:20			
Unit Number										Location		3829		AUSL			
Recorded By										M. Pratt, B. Jones							
Witnessed By										M. Culicut, S. Faulkner							

Oil Density					
Water Salinity					
Gas Gravity					
Bo					
Bw					
1/Bg					
Bubble Point Pressure					
Bubble Point Temperature					
Solution GOR					
Maximum Deviation		60.22 deg			
CEMENTING DATA					
Primary/Squeeze		Primary			
Casing String No					
Lead Cement Type					
Volume					
Density					
Water Loss					
Additives					
Tail Cement Type					
Volume					
Density					
Water Loss					
Additives					
Expected Cement Top					
Logging Date					
Run Number					
Depth Driller					
Schlumberger Depth					
Bottom Log Interval					
Top Log Interval					
Casing Fluid Type					
Salinity					
Density					
Fluid Level					
BIT/CASING/TUBING STRING					
Bit Size					
From					
To					
Casing/Tubing Size					
Weight					
Grade					
From					
To					
Maximum Recorded Temperatures					
Logger On Bottom		Time			
Unit Number		Location			
Recorded By					
Witnessed By					

DEPTH SUMMARY LISTING

Date Created: 20-JUL-2009 5:42:47

Depth System Equipment

Depth Measuring Device		Tension Device		Logging Cable	
Type:	IDW-H	Type:	CMTD-B/A	Type:	7-46ZV XS
Serial Number:	796	Serial Number:	2268	Serial Number:	708145
Calibration Date:	8-May-2009	Calibration Date:	2-Jul-2009	Length:	7010 M
Calibrator Serial Number:	30	Calibrator Serial Number:	1173		
Calibration Cable Type:	7-46ZV XS	Number of Calibration Points:	9	Conveyance Method:	Wireline
Wheel Correction 1:	-1	Calibration RMS:	41	Rig Type:	Offshore Fixed
Wheel Correction 2:	0	Calibration Peak Error:	51		

Depth Control Parameters

Log Sequence:	First Log In the Well
Rig Up Length At Surface:	0.00 M
Rig Up Length At Bottom:	0.00 M
Rig Up Length Correction:	0.00 M
Stretch Correction:	0.00 M
Tool Zero Check At Surface:	-8.00 M

Depth Control Remarks

1. Schlumberger Depth Control Policy followed
2. Primary Depth Control Device : IDW
3. Secondary Depth Control Device : Z Chart
4. Primary Tension Control Device : CMTD
5.
6.

DISCLAIMER

THE USE OF AND RELIANCE UPON THIS RECORDED-DATA BY THE HEREIN NAMED COMPANY (AND ANY OF ITS AFFILIATES, PARTNERS, REPRESENTATIVES, AGENTS, CONSULTANTS AND EMPLOYEES) IS SUBJECT TO THE TERMS AND CONDITIONS AGREED UPON BETWEEN SCHLUMBERGER AND THE COMPANY, INCLUDING: (a) RESTRICTIONS ON USE OF THE RECORDED-DATA; (b) DISCLAIMERS AND WAIVERS OF WARRANTIES AND REPRESENTATIONS REGARDING COMPANY'S USE OF AND RELIANCE UPON THE RECORDED-DATA; AND (c) CUSTOMER'S FULL AND SOLE RESPONSIBILITY FOR ANY INFERENCE DRAWN OR DECISION MADE IN CONNECTION WITH THE USE OF THIS RECORDED-DATA.

OTHER SERVICES1	OTHER SERVICES2
OS1: Tubing Corelation	OS1:
OS2: GR, CCL	OS2:
OS3:	OS3:
OS4:	OS4:
OS5:	OS5:
REMARKS: RUN NUMBER 1	REMARKS: RUN NUMBER 2





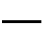




Log correlated to Schlumberger LWD log provided by client
Objective: RIH with Junk Basket & 6" Guage ring to HUD, ensure access forHSD run
Perforate Interval 3772m - 3776.5m with 4-1/2 "HSD 12spf, 135/45 deg phased
perforating gun using 4512 Powerjet Omega charges. Secure initiated.
Correlate Production string on depth using PGGT-C.
HUD tagged @ 3950.7m MDKB @ bottom of Junk Basket
CCL to Bottom Of Junk Basket - 2.52m

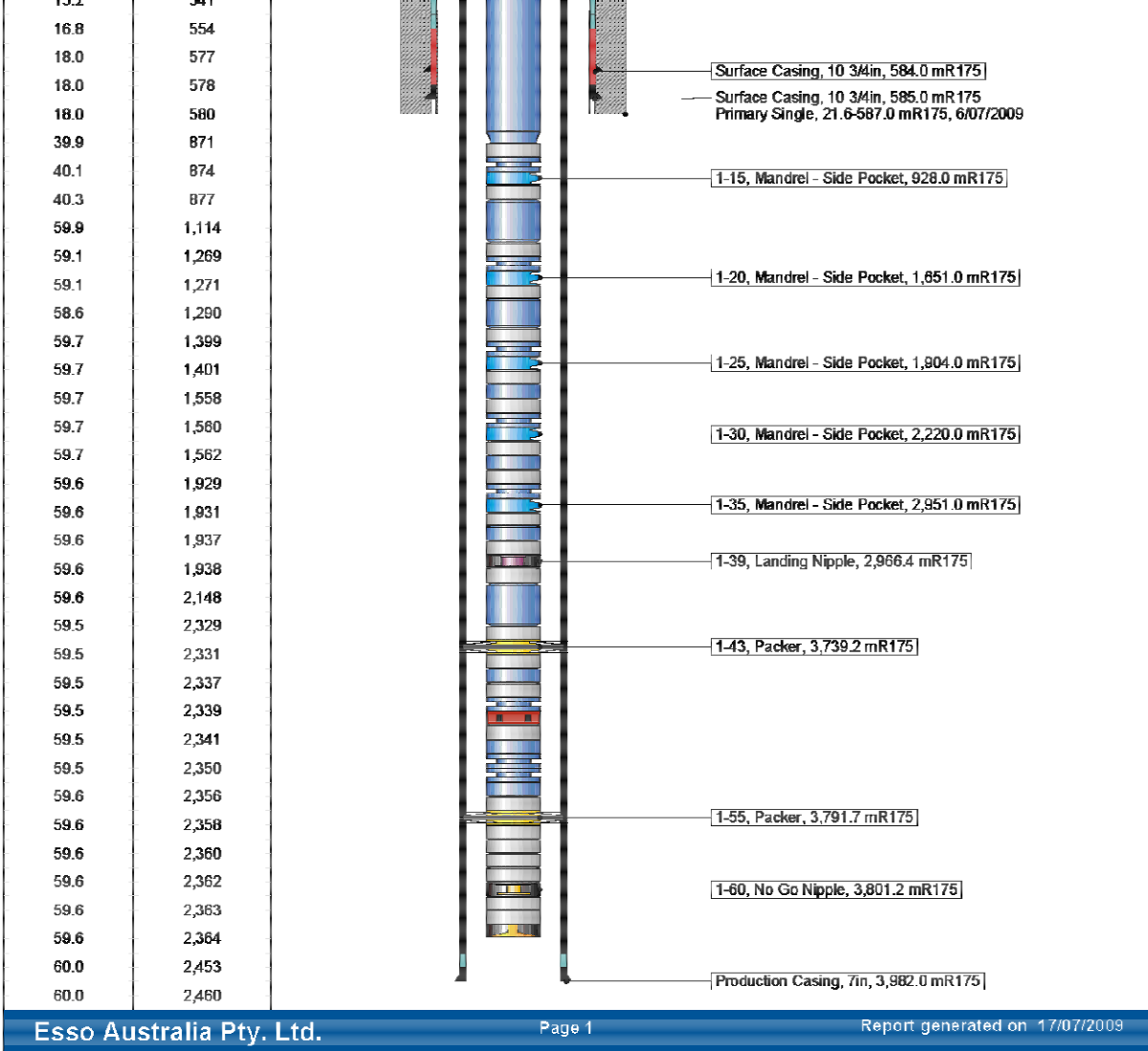
COL to Bottom of Junk Basket = 2.32m
Gun 1: Top shot 3772m-3776.5m MDKB
CCL to Top Shot= 3.72m
CCL stop Depth = 3768.28m MDKB
Completion string pulled back out due to downhole leak.
Junk Basket and 6" gauge ring re-run after completion POOH
Completion string correlated again after string re-run.
Schlumberger crew:
Days: B. Glover, M. Hancock, Nights: K. Kerr, G. Brady & A. Hall, G. Martin

RUN 1			RUN 2		
SERVICE ORDER #:		4500578305	SERVICE ORDER #:		
PROGRAM VERSION:		17C0-154	PROGRAM VERSION:		
FLUID LEVEL:		0 m	FLUID LEVEL:		
LOGGED INTERVAL	START	STOP	LOGGED INTERVAL	START	STOP

EQUIPMENT DESCRIPTION					
RUN 1			RUN 2		

SURFACE EQUIPMENT		SURFACE EQUIPMENT	
WITM (SHM)		WITM (SHM)	

DOWNHOLE EQUIPMENT		DOWNHOLE EQUIPMENT	
<div> <div> <div>PEH-A</div> <div>PEH-A</div> <div>  </div> <div>4.47</div> </div> <div> <div>AH-64</div> <div>AH-64</div> <div>  </div> <div>3.92</div> </div> <div> <div>PGGT-D</div> <div>PGGC</div> <div>PGGH-D</div> <div>  </div> <div>3.52</div> </div> <div> <div>Gamma Ray</div> <div>  </div> <div>1.07</div> </div> <div> <div>Casing Co Tension</div> <div>  </div> <div>TOOL ZERO</div> </div> </div>		<div> <div> <div>MH-22</div> <div>MH-22</div> <div>  </div> <div>5.81</div> </div> <div> <div>AH-38</div> <div>  </div> <div>5.33</div> </div> <div> <div>EQF-46</div> <div>EQF-46</div> <div>  </div> <div>5.25</div> </div> <div> <div>EQF-38</div> <div>EQF-38</div> <div>  </div> <div>3.42</div> </div> </div>	



Schlumberger

Production Tubing Correlation

MAXIS Field Log

Company: Esso Australia Pty Ltd

Well: CBA A28

Input DLIS Files

DEFAULT	PERFO_263LUP	FN:139	PRODUCER	29-Jul-2009 09:29	3803.4 M	3695.2 M
---------	--------------	--------	----------	-------------------	----------	----------

Output DLIS Files

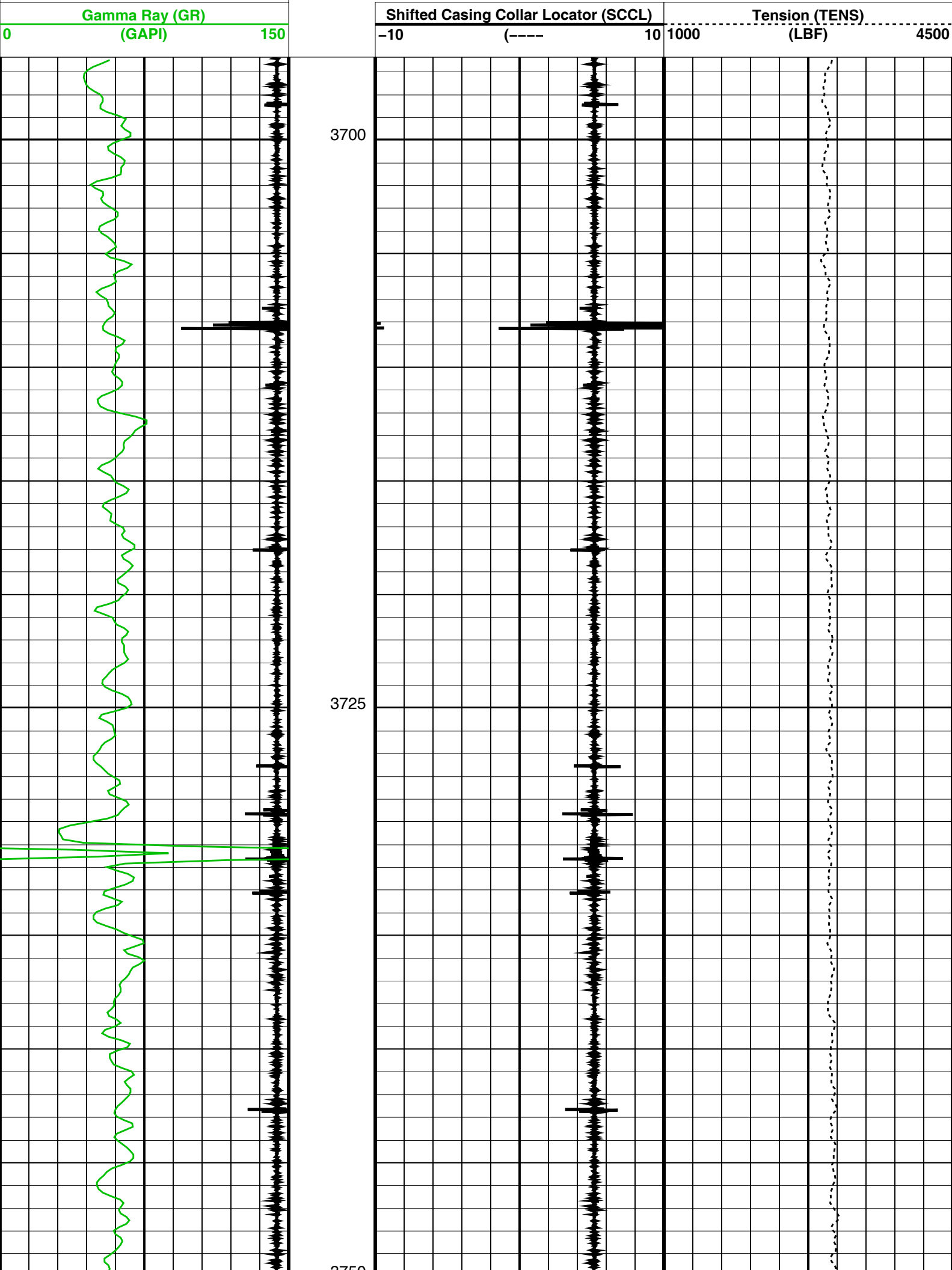
DEFAULT	PERFO_264PUP	FN:140	PRODUCER	29-Jul-2009 09:43	3804.5 M	3696.3 M
---------	--------------	--------	----------	-------------------	----------	----------

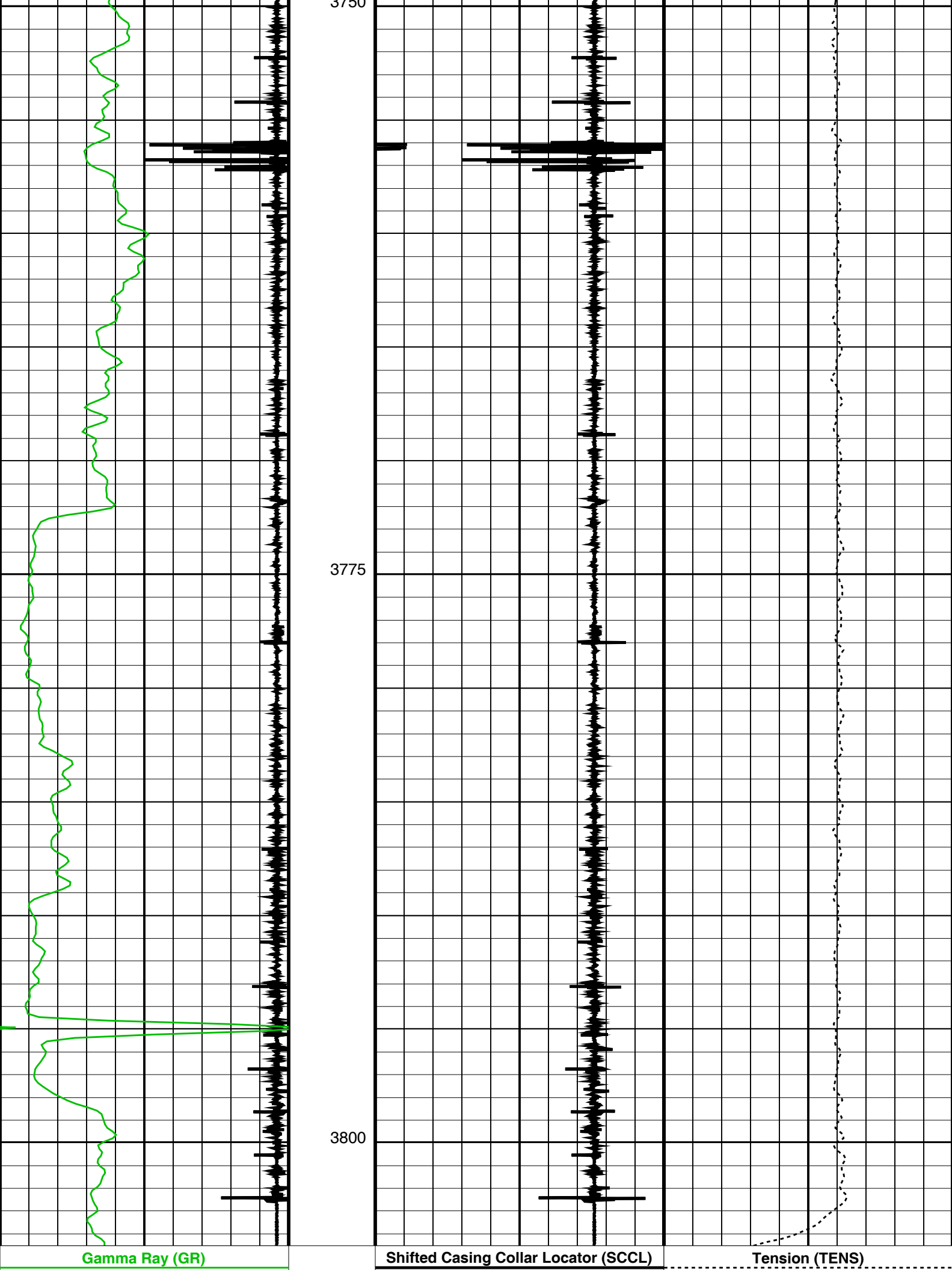
OP System Version: 17C0-154

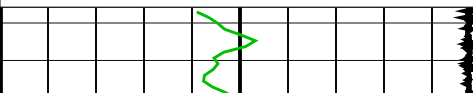
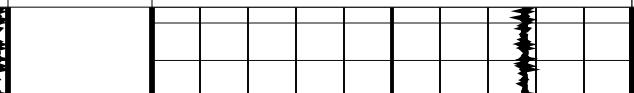
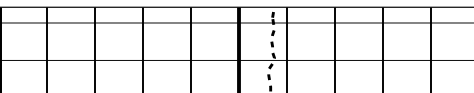
SHM_GUN	17C0-154	PGGT-CC	17C0-154
---------	----------	---------	----------

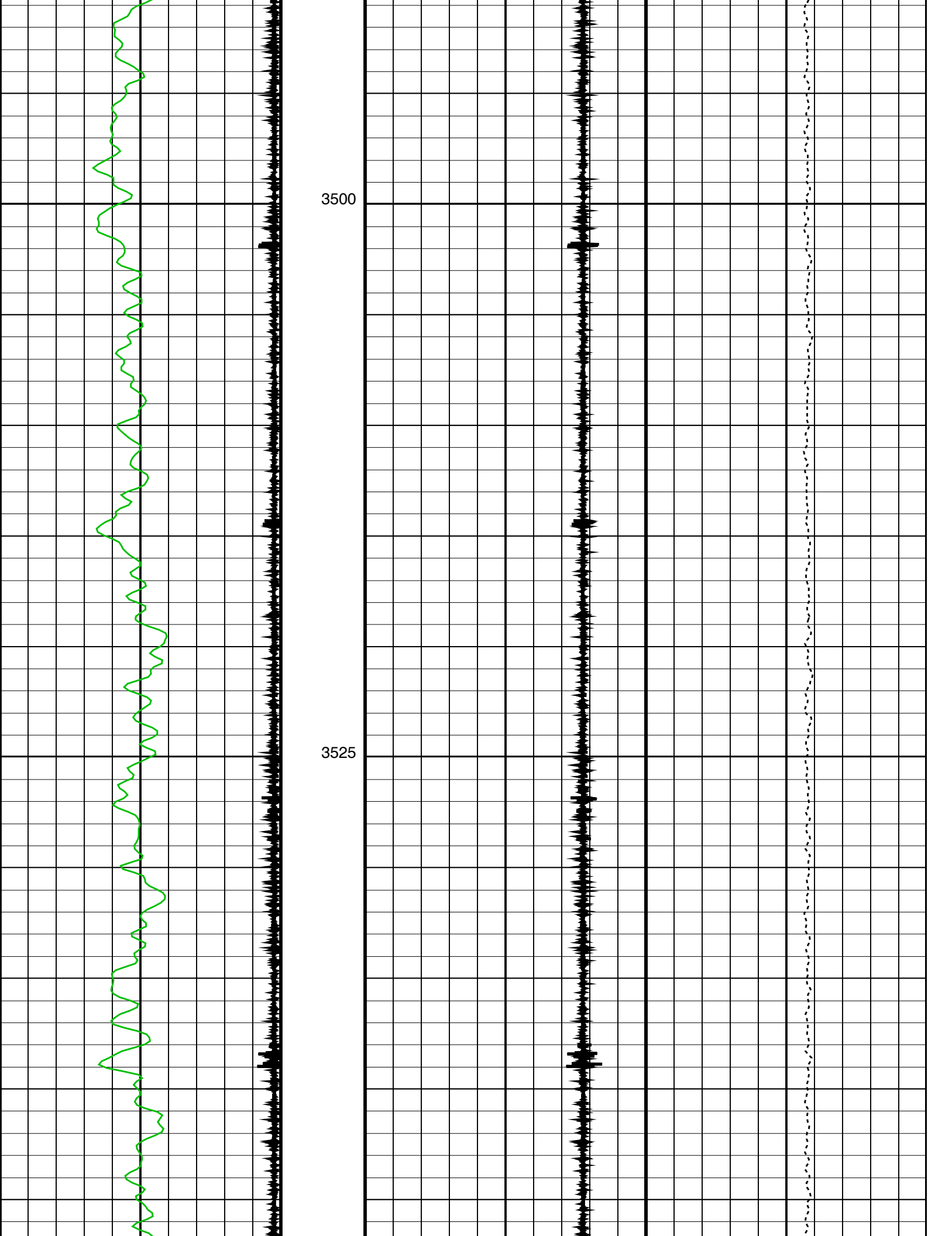
Casing Collar Locator (CCL)

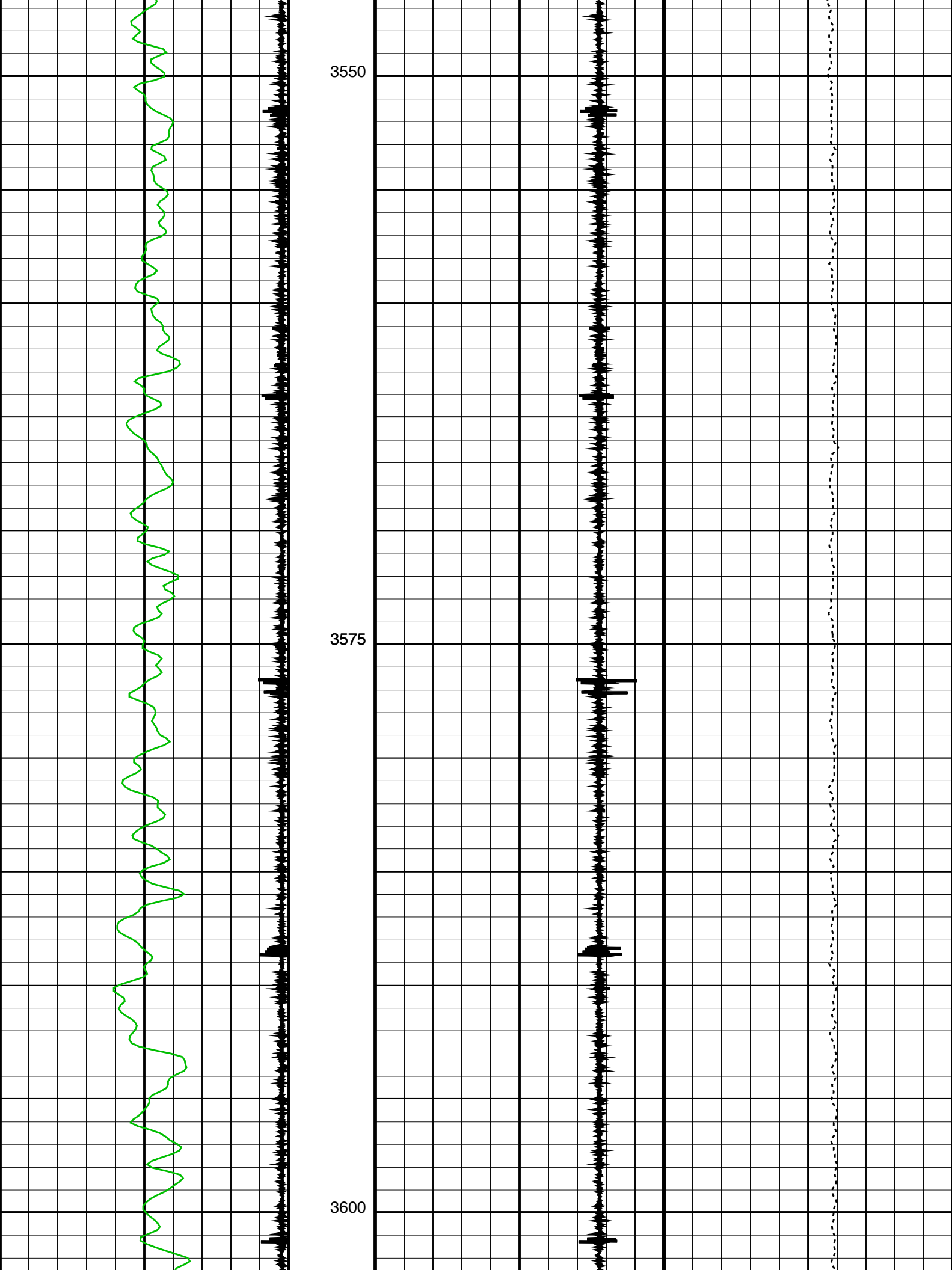
-19	(----	1
-----	-------	---

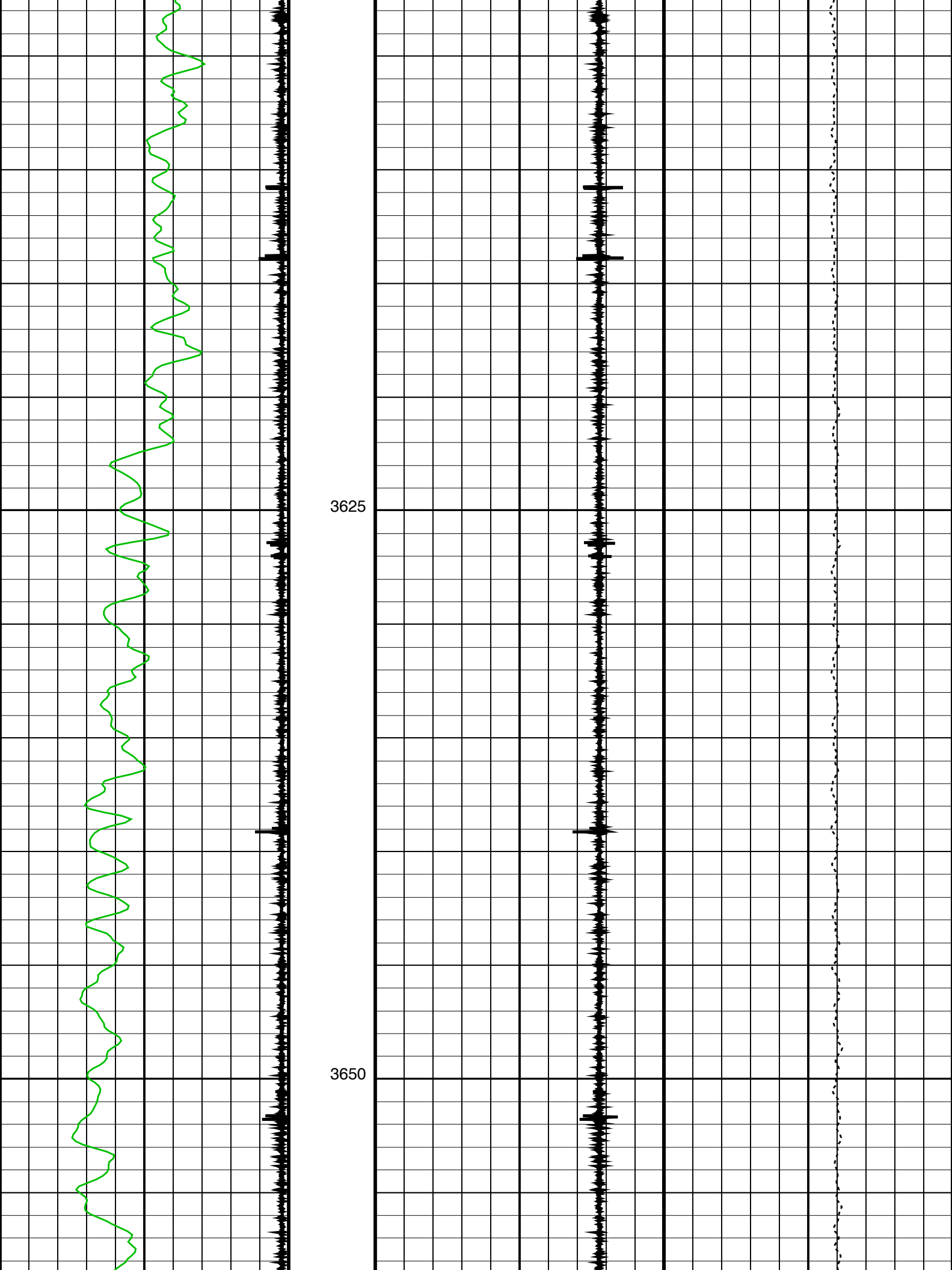


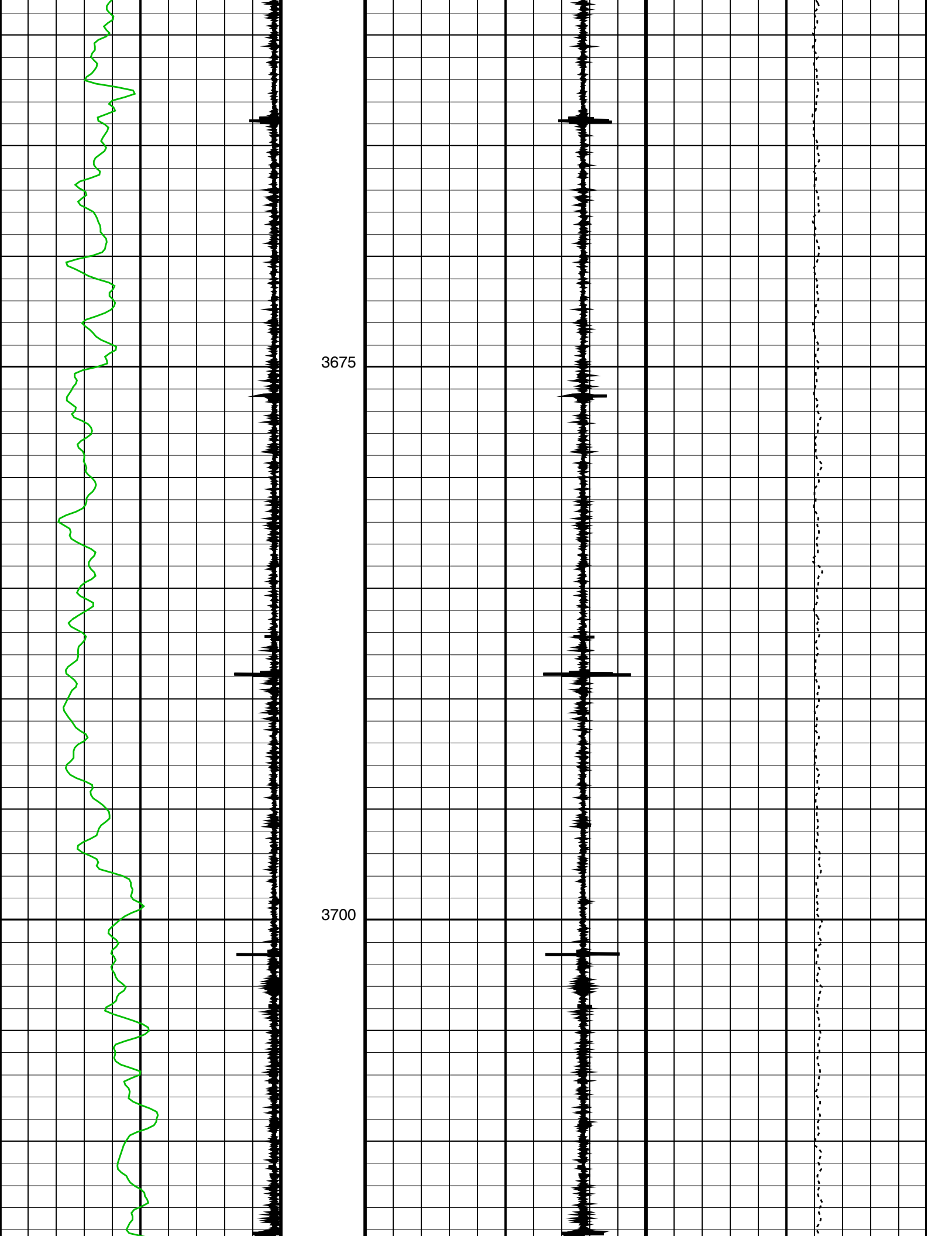


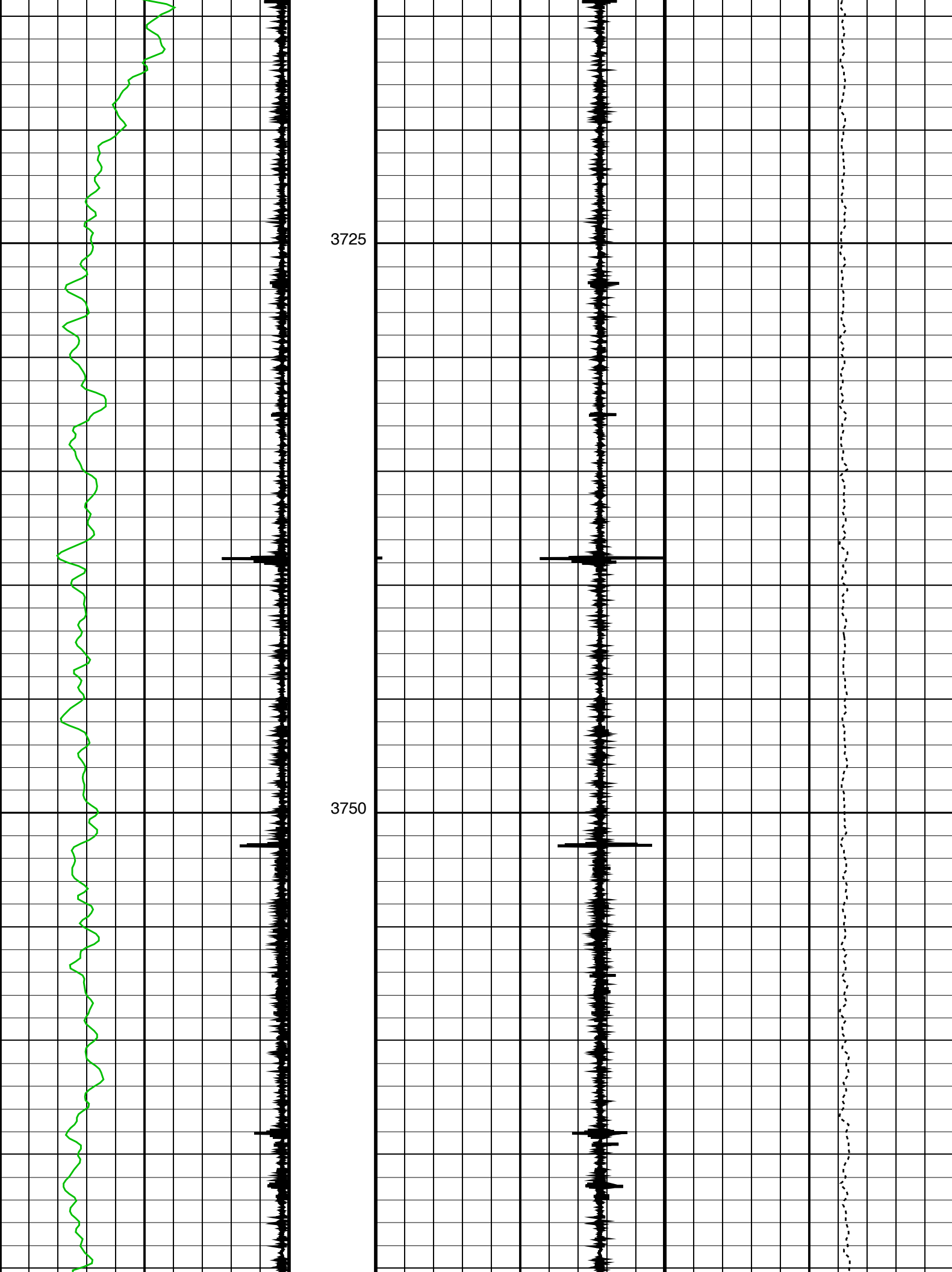
Gamma Ray (GR) (GAPI)		Shifted Casing Collar Locator (SCCL)		Tension (TENS) (LBF)	
0	150	-10	10	1000	4500
					

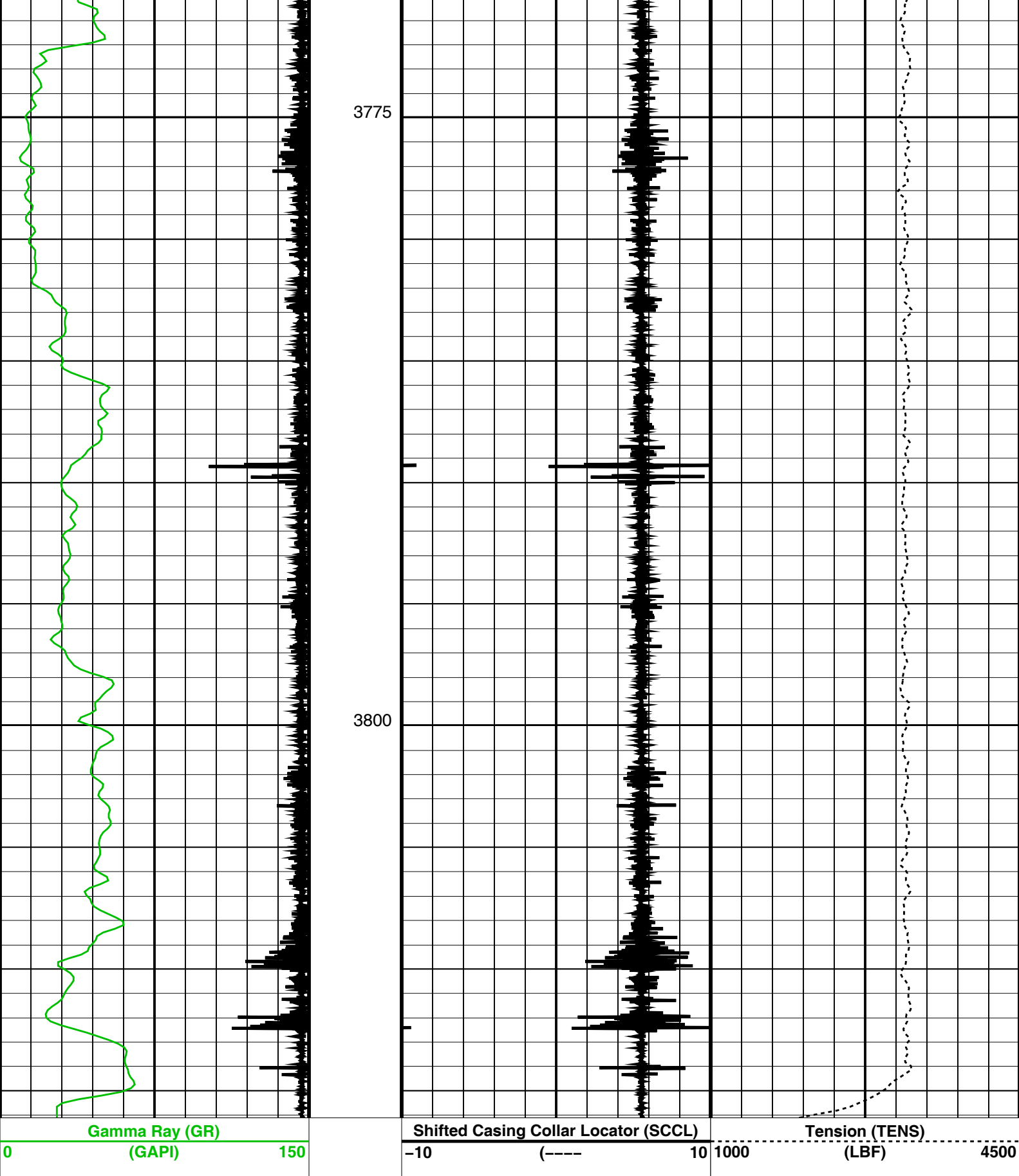












Parameters		
DLIS Name	Description	Value
DO	System and Miscellaneous Depth Offset for Playback	-4.4 M

OP System Version: 17C0-154

SHM_GUN	17C0-154	PGGT-D	17C0-154
---------	----------	--------	----------

Input DLIS Files

DEFAULT	PERFO_051LUP	FN:55	PRODUCER	21-Jul-2009 02:37	3820.5 M	3489.8 M
---------	--------------	-------	----------	-------------------	----------	----------

Output DLIS Files

DEFAULT	PERFO_055PUP	FN:59	PRODUCER	21-Jul-2009 05:08
CUSTOMER	PERFO_055PUC	FN:60	CUSTOMER	21-Jul-2009 05:08

Company: Esso Australia Pty Ltd**Schlumberger****Well: CBA A28****Field: Cobia****Rig: 175****Country: Australia**

Junk Basket with 6" Gauge Ring
4 1/2" HSD Powerjet Omega
Perforation Record 29-July-09