



Company: **Esso Australia Pty Ltd**

Well: **WKF W-12**

Field: **West Kingfish**

Rig: **Rig 22/Prod 2** Country: **Australia**

Rig: 22/Prod 2 Field: West Kingfish Location: Bass Strait Well: WKF W-12 Company: Esso Australia Pty Ltd	2.5" Powercutter Tubing Cut Record 1-May-2009			
	Bass Strait Gippsland Basin		Elev.: K.B. 34.20 m G.L. -77.00 m D.F. 34.20 m	
	Permanent Datum: GROUND LEVEL		Elev.: -34.20 m	
	Log Measured From: D.F		68.40 m	above Perm. Datum
	Drilling Measured From: K.B			
	State: Victoria	Max. Well Deviation 10 deg	Longitude 148° 6' 15.1" E	Latitude 038° 35'40.7" S
Logging Date		1-May-2009		
Run Number		1 & 2		
Depth Driller		2392 m		
Schlumberger Depth		2245 m		
Bottom Log Interval		2234 m		
Top Log Interval		2234 m		
Casing Fluid Type		Inhibited Sea Water		
Salinity				
Density		8.55 g/cm3		
Fluid Level		0 m		
BIT/CASING/TUBING STRING				
Bit Size		8.500 in		
From		619 m		
To		2392 m		
Casing/Tubing Size		3.500 in		
Weight		9.3 lbm/ft		
Grade		J-55		
From		12.5 m		
To		2247.04 m		
Maximum Recorded Temperatures				
Logger On Bottom Time		1-May-2009 17:00		
Unit Number Location		3827 AUSL		
Recorded By		M.Pratt, S. Gilbert		
Witnessed By		A. Smythe, W. Westman		

PVT DATA	Oil Density	
	Water Salinity	
	Gas Gravity	
	Bo	
	Bw	
	1/Bg	
	Bubble Point Pressure	
	Bubble Point Temperature	
	Solution GOR	
	Maximum Deviation	10 deg
CEMENTING DATA		
Primary/Squeeze	Primary	
Casing String No		
Lead Cement Type		
Volume		
Density		
Water Loss		
Additives		
Tail Cement Type		
Volume		
Density		
Water Loss		
Additives		
Expected Cement Top		
Logging Date		
Run Number		
Depth Driller		
Schlumberger Depth		
Bottom Log Interval		
Top Log Interval		
Casing Fluid Type		
Salinity		
Density		
Fluid Level		
BIT/CASING/TUBING STRING		
Bit Size		
From		
To		
Casing/Tubing Size		
Weight		
Grade		
From		
To		
Maximum Recorded Temperatures		
Logger On Bottom Time		
Unit Number Location		
Recorded By		
Witnessed By		

DEPTH SUMMARY LISTING

Date Created: 1-MAY-2009 22:37:07

Depth System Equipment

Depth Measuring Device	Tension Device	Logging Cable
Type: IDW-C Serial Number: 796 Calibration Date: 14-Oct-2008 Calibrator Serial Number: 30 Calibration Cable Type: 2-32ZT Wheel Correction 1: -1 Wheel Correction 2: 1	Type: CMTD-B/A Serial Number: 1711 Calibration Date: 04-MAR-200 Calibrator Serial Number: 1173 Number of Calibration Points: 0	Type: 2-32ZT Serial Number: 24187 Length: 5090 M Conveyance Method: Wireline Rig Type: Offshore Fixed

Depth Control Parameters

Log Sequence:	Subsequent Log In the Well
Reference Log Name:	UNKNOWN
Reference Log Run Number:	UNKNOWN
Reference Log Date:	UNKNOWN

Depth Control Remarks

1. Log correlated to Exxon Mobile tubing Tally incorporated in approved program
2. IDW used as primary depth control
3. Z-chart used as backup.
4. CMTD calibration: a=1.32E-5, B=0.8513, & C=2.868
5. Full Pressure Gear Used
6.

DISCLAIMER

THE USE OF AND RELIANCE UPON THIS RECORDED-DATA BY THE HEREIN NAMED COMPANY (AND ANY OF ITS AFFILIATES, PARTNERS, REPRESENTATIVES, AGENTS, CONSULTANTS AND EMPLOYEES) IS SUBJECT TO THE TERMS AND CONDITIONS AGREED UPON BETWEEN SCHLUMBERGER AND THE COMPANY, INCLUDING: (a) RESTRICTIONS ON USE OF THE RECORDED-DATA; (b) DISCLAIMERS AND WAIVERS OF WARRANTIES AND REPRESENTATIONS REGARDING COMPANY'S USE OF AND RELIANCE UPON THE RECORDED-DATA; AND (c) CUSTOMER'S FULL AND SOLE RESPONSIBILITY FOR ANY INFERENCE DRAWN OR DECISION MADE IN CONNECTION WITH THE USE OF THIS RECORDED-DATA.

OTHER SERVICES ¹
OS1: Drift run
OS2:
OS3:
OS4:
OS5:

REMARKS: RUN NUMBER 1
Log correlated to Tubing Tally provided by client.
Objective: Cut production tubing above Packer @ 2234m MDKB
to recover tubing and set Drilling Kick-off Plug.
RIH with 1-11/16" GR/CCL and 2.5" Dummy Powercutter to approx
2234m MDKB. POOH(CCL to Dummy Cutter = 1.7m)
RIH with a 2.5" Powercutter and 1-11/16" CCL to cut tubing @ 2234m MDKB.
Max deviation 10 deg @ 334m MDKB. Secure Initiated

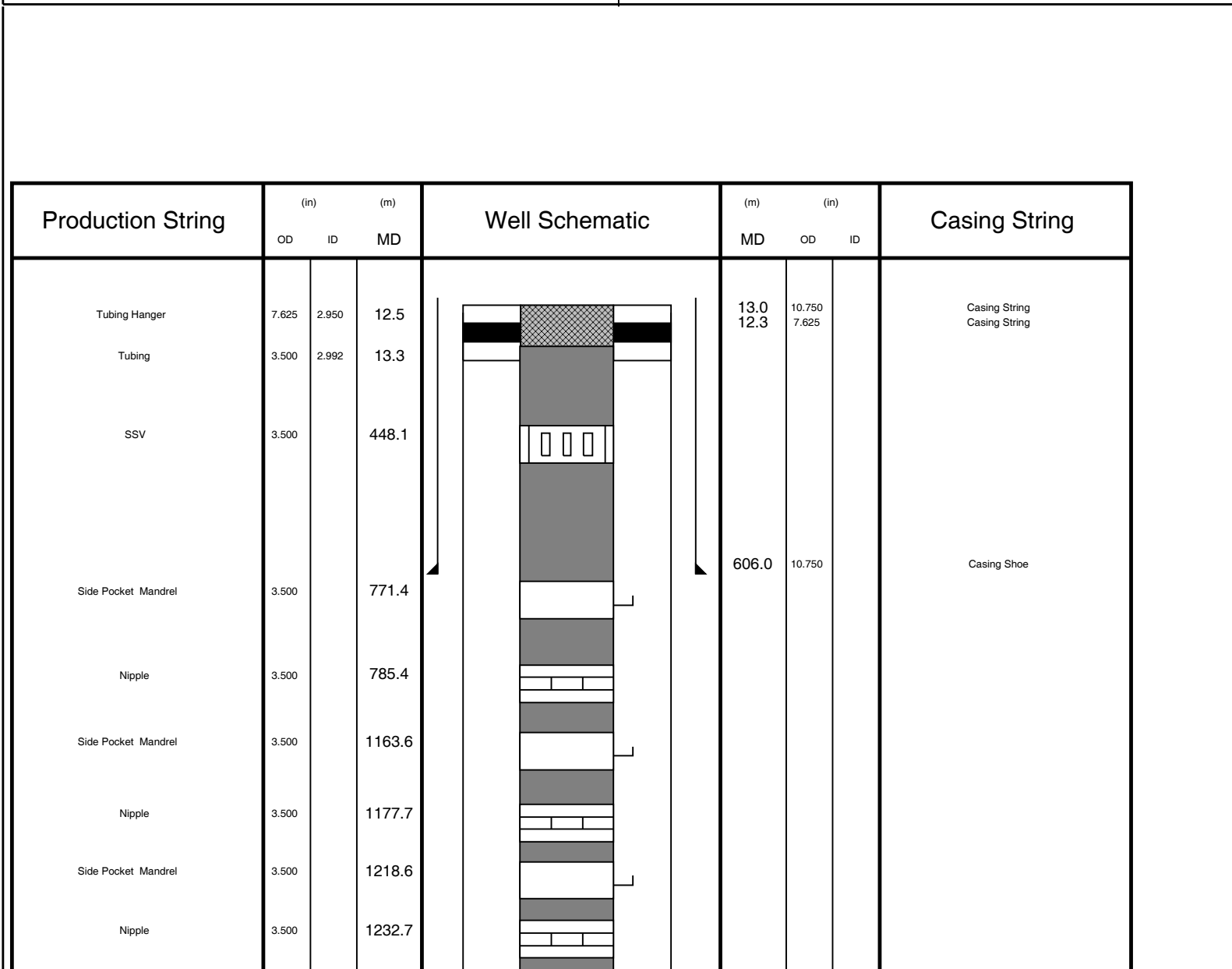
Max deviation 10 deg @ 334m MDKB. Secure initiated
Powercutter:
Top Shot @ 2234m MDKB.
CCL to Top Shot: 2.6m
CCL stop depth: 2231.4m MDKB.
Schlumberger Crew:
Operators:
Days: P. Lawrence , D. Hiskins
Nights:S. Lansbury , A. Pratt

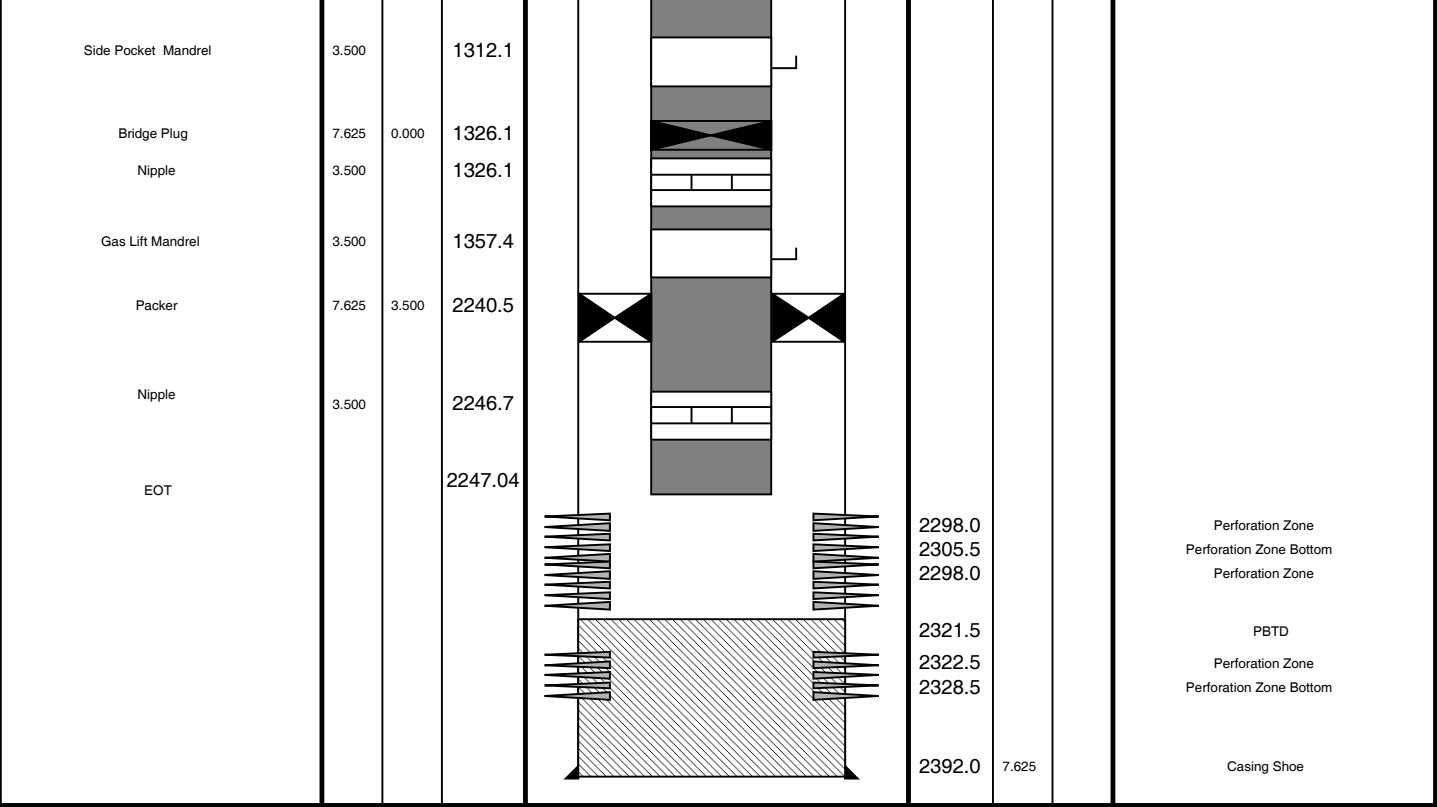
RUN 1			RUN 2		
SERVICE ORDER #:		4500562790	SERVICE ORDER #:		
PROGRAM VERSION:		17C0-154	PROGRAM VERSION:		
FLUID LEVEL:		0 m	FLUID LEVEL:		
LOGGED INTERVAL	START	STOP	LOGGED INTERVAL	START	STOP

EQUIPMENT DESCRIPTION					
RUN 1			RUN 2		

SURFACE EQUIPMENT		SURFACE EQUIPMENT	
SHM-EA		WITM (SHM)	

DOWNHOLE EQUIPMENT		DOWNHOLE EQUIPMENT	
<div> <div>MH-22</div> <div>MH-22</div> <div></div> <div>AH-38</div> <div></div> <div>EQF-43</div> <div>EQF-43 201</div> <div></div> <div>UPCT-A</div> <div>UPCC-A 306</div> <div>UPCH-A 304</div> <div>Gamma Ray</div> </div>	<div>5.14</div> <div></div> <div>4.66</div> <div>4.57</div> <div></div> <div>2.74</div> <div>0.79</div>	<div> <div>MH-22</div> <div>MH-22</div> <div></div> <div>AH-38</div> <div></div> <div>EQF-43</div> <div>EQF-43</div> <div></div> <div>CCL-LA</div> <div>CCL-LA</div> <div></div> <div>AH-122</div> <div>AH-122</div> <div>AH-WPSA-BA</div> </div>	<div>5.27</div> <div></div> <div>4.79</div> <div>4.71</div> <div></div> <div>2.88</div> <div>2.42</div> <div>2.29</div>
		Tension CCL	TOOL ZERO





Job Event Summary

MAXIS Field Log

Schlumberger Job Event Summary

Time	Elapsed Time	Depth (M)	File
------	--------------	-----------	------

Log Pass (down)	1-May-2009 16:25	000:47	-4.7 - 2250.8	PERFO_014LDP
Log Pass (up)	1-May-2009 17:12	000:06	2250.6 - 2199.1	PERFO_015LUP
Log Pass (up)	1-May-2009 22:23	000:04	2248.4 - 2223.4	PERFO_031LUP
Log Pass (up)	1-May-2009 22:30	000:10	2246.2 - 2204.2	PERFO_033LUP

PERFO2 Operational Summary Listing

Device	Status	Req Depth (M)	Obs Depth (M)	Time Used
GUN1	Used	2234.0	2234.0	Fri May 01 22:34:25 200

Company: Esso Australia Pty LtdWell: WKF W12

Output DLIS Files

DEFAULT	PERFO_033LUP	FN:23	PRODUCER	01-May-2009 22:30	2246.2 M	2204.2 M
---------	--------------	-------	----------	-------------------	----------	----------

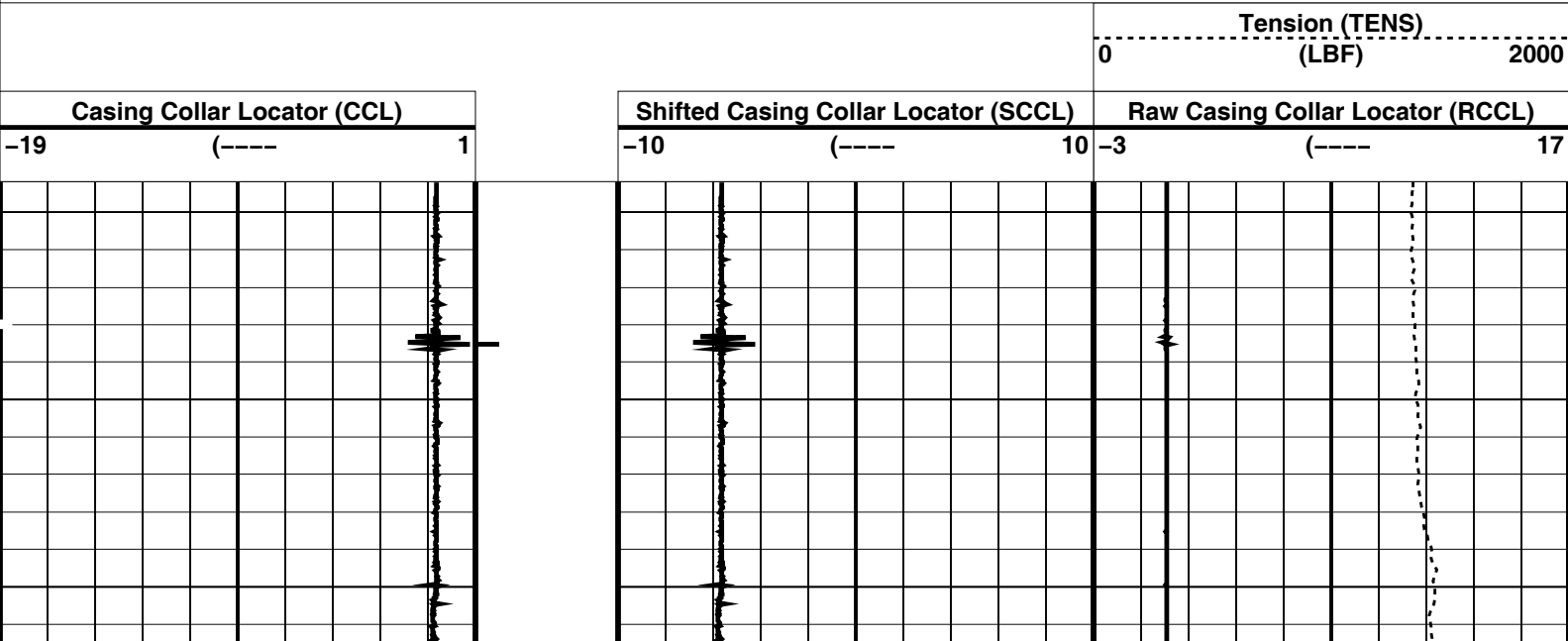
OP System Version: 17C0-154

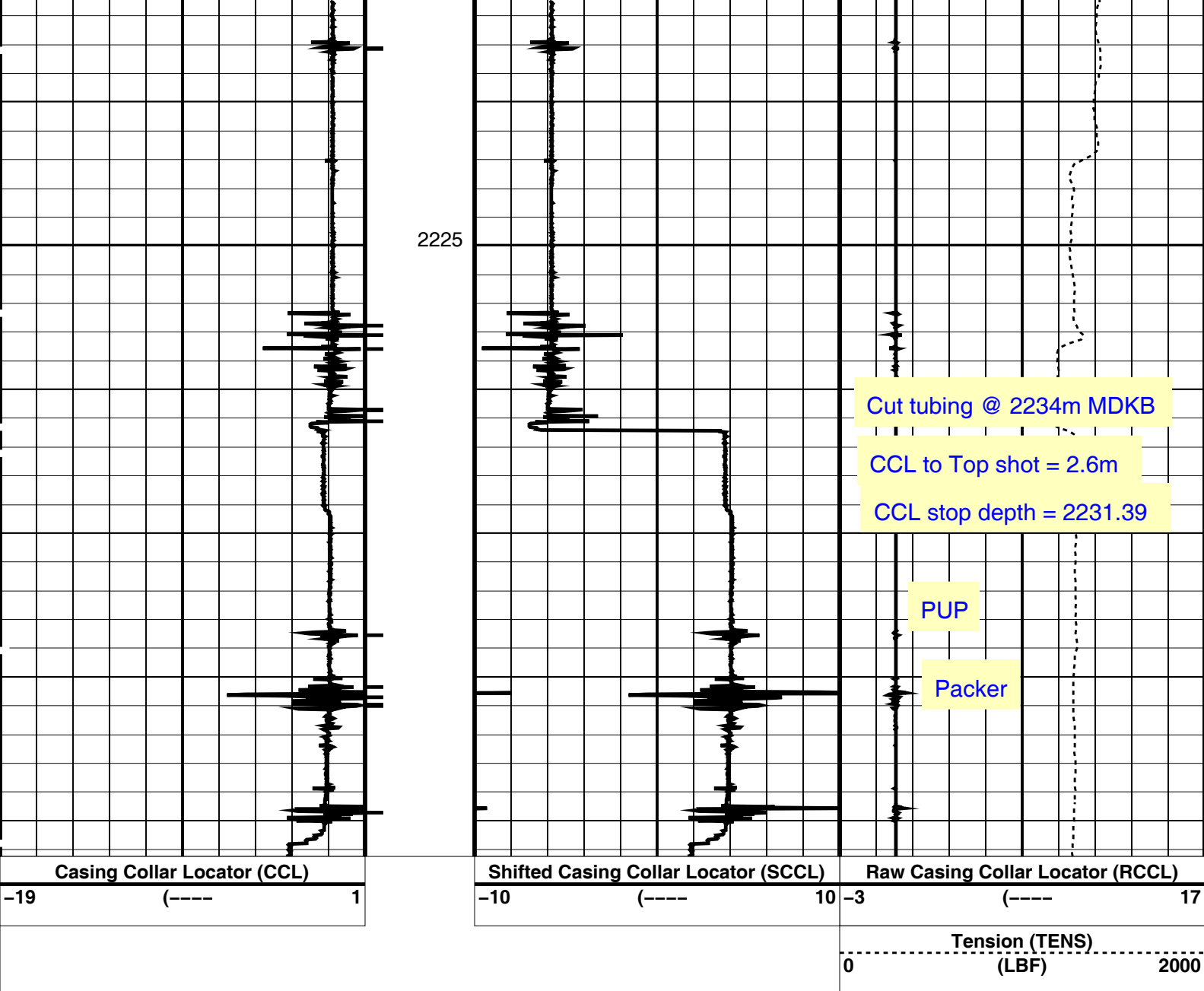
SHM_GUN	17C0-154	CCL-LA	17C0-154
---------	----------	--------	----------

PIP SUMMARY

└─ Casing Collars

Time Mark Every 60 S





PIP SUMMARY

└─ Casing Collars

Time Mark Every 60 S

Parameters

DLIS Name	Description	Value
CCLD	CCL-LA: Casing Collar Locator	12 IN
CCLT	CCL reset delay	0.3 V
CCLT	CCL Detection Level	

Format: PERFO Vertical Scale: 1:200

Graphics File Created: 01-May-2009 22:30

OP System Version: 17C0-154

SHM_GUN 17C0-154 CCL-LA 17C0-154

Output DLIS Files

DEFAULT PERFO_033LUP FN:23 PRODUCER 01-May-2009 22:30

MAXIS Field Log

Company: Esso Australia Pty Ltd

Well: WKF W12

Output DLIS Files

DEFAULT

PERFO_031LUP

FN:21

PRODUCER

01-May-2009 22:23 2248.4 M

2223.4 M

OP System Version: 17C0-154

SHM_GUN

17C0-154

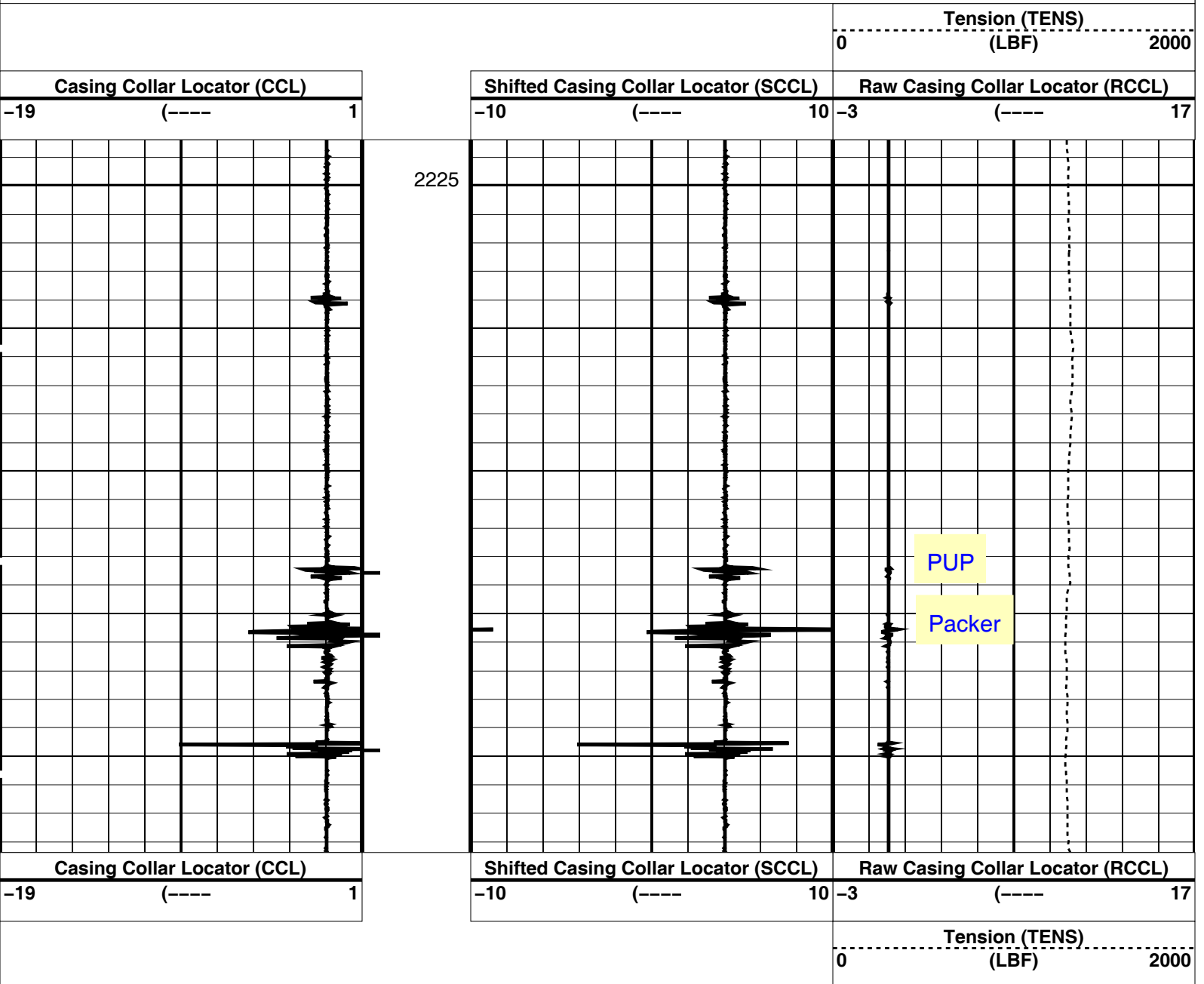
CCL-LA

17C0-154

PIP SUMMARY

Casing Collars

Time Mark Every 60 S



PIP SUMMARY

Casing Collars

Parameters				
DLIS Name		Description	Value	
CCL-LA: Casing Collar Locator				
CCLD	CCL reset delay		12	IN
CCLT	CCL Detection Level		0.3	V
Format: PERFO	Vertical Scale: 1:200		Graphics File Created: 01-May-2009 22:24	
OP System Version: 17C0-154				
SHM_GUN	17C0-154	CCL-LA	17C0-154	
Output DLIS Files				
DEFAULT	PERFO_031LUP	FN:21	PRODUCER	01-May-2009 22:23



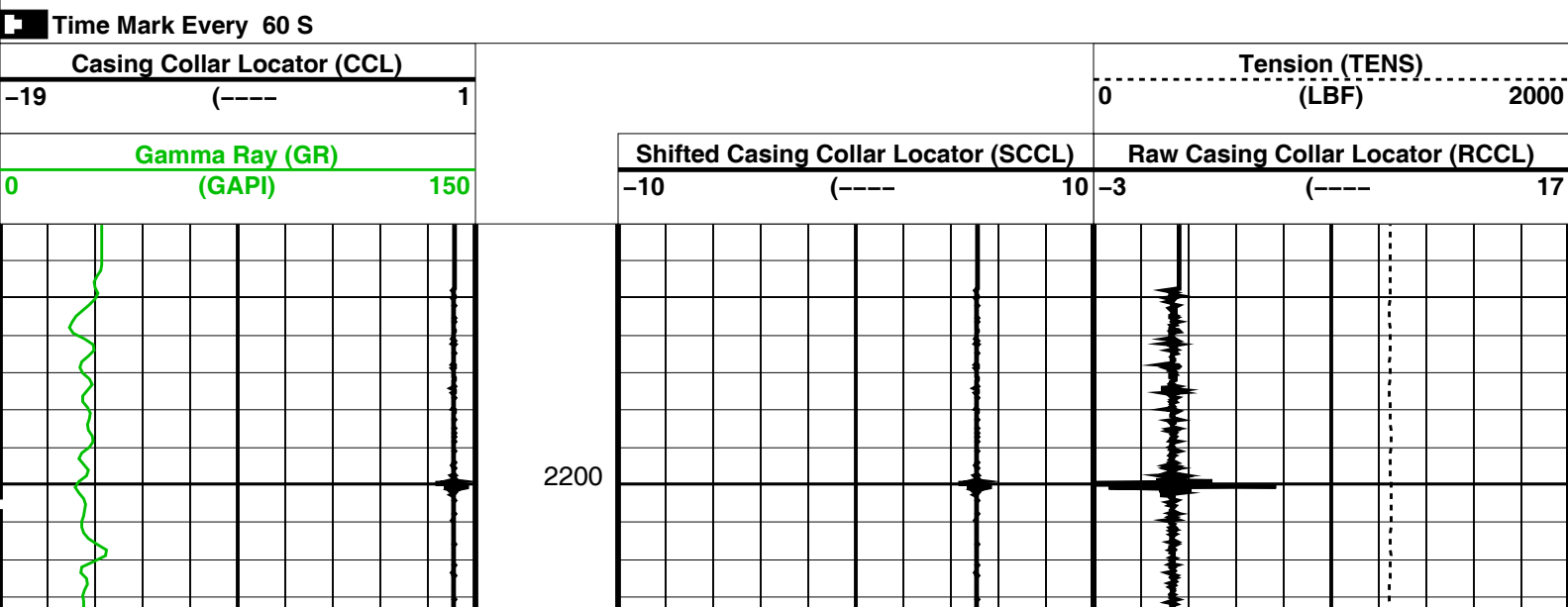
2.5" Dummy PowerCutter Pass

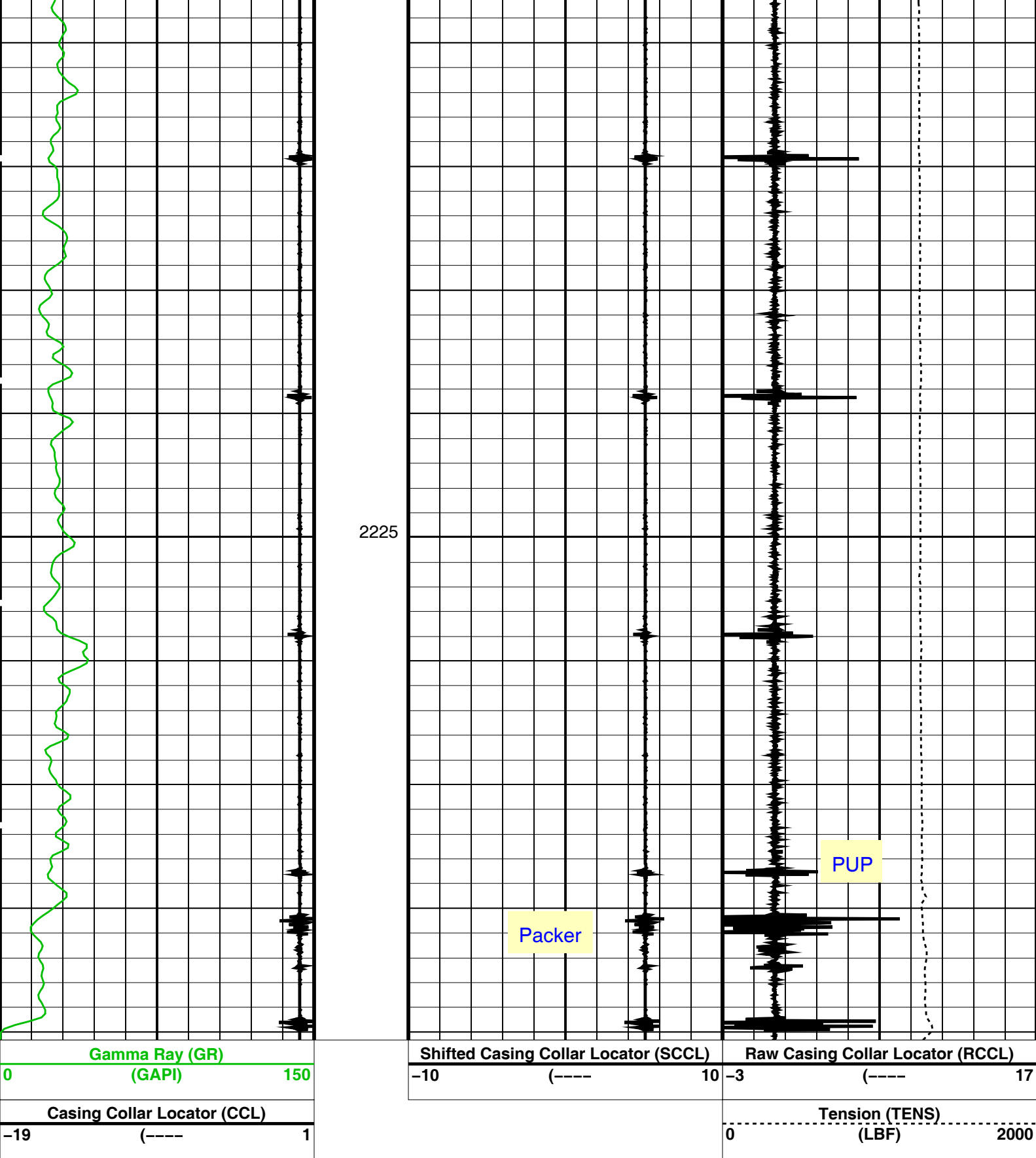
MAXIS Field Log

Company: Esso Australia Pty Ltd						Well: WKF W-12	
Input DLIS Files							
DEFAULT	PERFO_015LUP	FN:5	PRODUCER	01-May-2009 17:12	2250.6 M	2199.1 M	
Output DLIS Files							
DEFAULT	PERFO_016PUP	FN:6	PRODUCER	01-May-2009 17:19	2245.3 M	2192.9 M	

OP System Version: 17C0-154									
SHM_GUN	17C0-154	UPCT-A	17C0-154						

PIP SUMMARY





PIP SUMMARY

Time Mark Every 60 S

Parameters

DLIS Name	Description	Value
DO	System and Miscellaneous	
PP	Depth Offset for Playback	-5.3 M
	Playback Processing	NORMAL

SHM_GUN	17C0-154	UPCT-A	17C0-154
Input DLIS Files			
DEFAULT	PERFO_015LUP	FN:5 PRODUCER	01-May-2009 17:12 2250.6 M 2199.1 M
Output DLIS Files			
DEFAULT	PERFO_016PUP	FN:6 PRODUCER	01-May-2009 17:19

Company: **Esso Australia Pty Ltd**

Schlumberger

Well: **WKF W-12**

Field: **West Kingfish**

Rig: **Rig 22/Prod 2**

Country: **Australia**

2.5" Powercutter

Tubing Cut Record

1-May-2009