

Company: Esso Australia Pty Ltd

Well: CBA F8

Field: Cobia

Rig: Rig 175

Country: Australia

Junk Basket with 6" Gauge Ring
Max-R Setting Record
12-Jun-2009

Rig 175	
Field:	Cobia
Location:	Bass Strait
Well:	CBA F8
Company:	Esso Australia Pty Ltd
LOCATION	
Bass Strait	Elev.: K.B. 40.99 m
Gippsland	G.L. -79.00 m
Basin	D.F. 40.99 m
Permanent Datum:	GROUND LEVEL
Log Measured From:	RT
Drilling Measured From:	RT
State: Victoria	Max. Well Deviation 53 deg
	Longitude 148° 18'33.005"E
	Latitude 038°26'57.568"S

Logging Date	12-Jun-2009		
Run Number	1 through 3		
Depth Driller	3132 m		
Schlumberger Depth	3088.51 m		
Bottom Log Interval	3053.49 m		
Top Log Interval	3053.49 m		
Casing Fluid Type	Brine		
Salinity			
Density	8.55 lbm/gal		
Fluid Level	0 m		
BIT/CASING/TUBING STRING			
Bit Size	8.500 in		
From	775.1 m		
To	3132 m		
Casing/Tubing Size	7.000 in		
Weight	26 lbm/ft		
Grade	L-80		
From	19.91 m		
To	3132 m		
Maximum Recorded Temperatures	212 degF		
Logger On Bottom	12-Jun-2009	5:00	
Unit Number	3929	AUSL	
Recorded By	O. Darby & S. Gilbert		
Witnessed By	D. Daniels & G. Doty		

	Oil Density	Run 1	Run 2	R
	Water Salinity			
	Gas Gravity			
	Bo			
	Bw			
	1/Bg			
	Bubble Point Pressure			
	Bubble Point Temperature			
	Solution GOR			
	Maximum Deviation	53 deg		
	CEMENTING DATA			
	Primary/Squeeze	Primary		
	Casing String No			
	Lead Cement Type			
	Volume			
	Density			
	Water Loss			
	Additives			
	Tail Cement Type			
	Volume			
	Density			
	Water Loss			
	Additives			
	Expected Cement Top			
	Logging Date			
	Run Number			
	Depth Driller			
	Schlumberger Depth			
	Bottom Log Interval			
	Top Log Interval			
	Casing Fluid Type			
	Salinity			
	Density			
	Fluid Level			
	BIT/CASING/TUBING STRING			
	Bit Size			
	From			
	To			
	Casing/Tubing Size			
	Weight			
	Grade			
	From			
	To			
	Maximum Recorded Temperatures			
	Logger On Bottom			
	Unit Number			
	Recorded By			
	Witnessed By			

Date Created: 9-JUN-2009 21:15:15

Logging Cable

Type:	7-46ZV XS
Serial Number:	708145
Length:	7315 M
Conveyance Method:	Wireline
Rig Type:	Offshore Fixed

Log Sequence:	Subsequent Trip To the Well
Reference Log Name:	Cobia F8
Reference Log Run Number:	Not Provided
Reference Log Date:	Not Provided
Subsequent Trip Down Log Correction:	

1. IDW used as primary depth control.
2. Used Z-Chart as secondary depth control
3. Correlated to LWD log provided by client
4. All logs zeroed at drill floor.
- 5.
- 6.

THE USE OF AND RELIANCE UPON THIS RECORDED-DATA BY THE HEREIN NAMED COMPANY (AND ANY OF ITS AFFILIATES, PARTNERS, REPRESENTATIVES, AGENTS, CONSULTANTS AND EMPLOYEES) IS SUBJECT TO THE TERMS AND CONDITIONS AGREED UPON BETWEEN SCHLUMBERGER AND THE COMPANY, INCLUDING: (a) RESTRICTIONS ON USE OF THE RECORDED-DATA; (b) DISCLAIMERS AND WAIVERS OF WARRANTIES AND REPRESENTATIONS REGARDING COMPANY'S USE OF AND RELIANCE UPON THE RECORDED-DATA; AND (c) CUSTOMER'S FULL AND SOLE RESPONSIBILITY FOR ANY INFERENCE DRAWN OR DECISION MADE IN CONNECTION WITH THE USE OF THIS RECORDED-DATA.











OTHER SERVICES2
OS1:
OS2:
OS3:
OS4:
OS5:

REMARKS: RUN NUMBER 2

set MaxR and POOH.

Junk Basket
HUD tagged @ 3088.51m MDKB with Junk Basket.
CCL to Bottom of Junk Basket = 2.51m
MaxR
CCL to Top Shot: 11.42m
CCL stop depth : 3050.58m
Schlumberger Crew:
Days: G. Martin & M. Hancock
Nights: B. Glover & Peter Lawrence Max-R Specialist: Mark Wilson

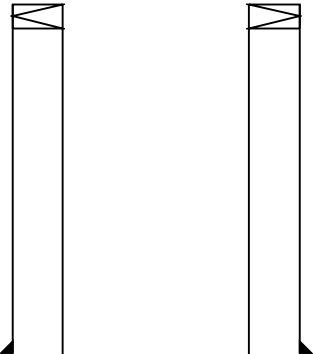
RUN 1			RUN 2		
SERVICE ORDER #:		B297-00007	SERVICE ORDER #:		
PROGRAM VERSION:		17C0-154	PROGRAM VERSION:		
FLUID LEVEL:		0 m	FLUID LEVEL:		
LOGGED INTERVAL	START	STOP	LOGGED INTERVAL	START	STOP

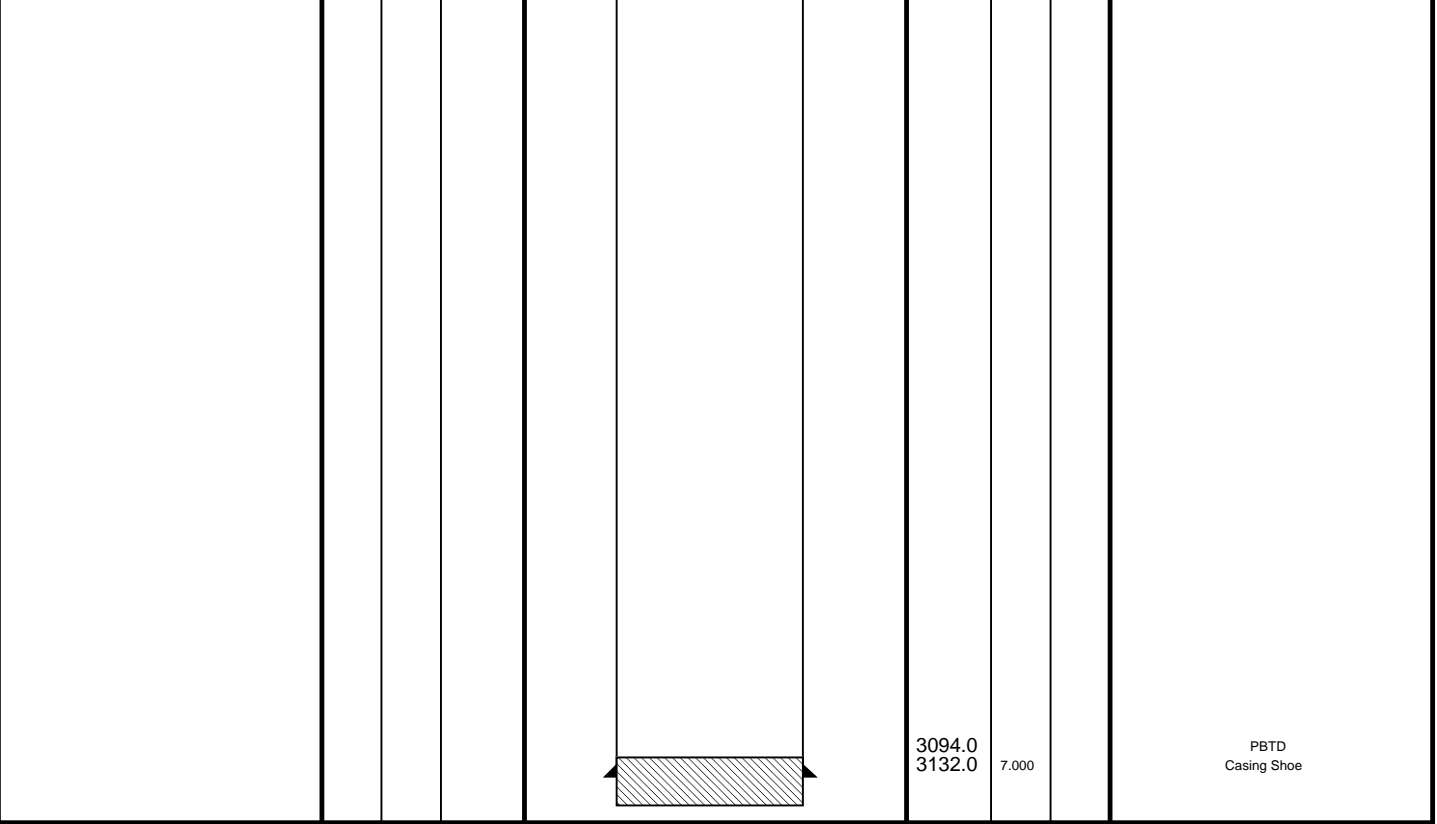
EQUIPMENT DESCRIPTION					
RUN 1			RUN 2		
SURFACE EQUIPMENT			SURFACE EQUIPMENT		
WITM (SHM)			WITM (SHM)		
DOWNHOLE EQUIPMENT			DOWNHOLE EQUIPMENT		
<div> <div>PEH-A PEH-A 11</div> <div>  </div> <div>4.46</div> </div> <div> <div>AH-64 AH-64 8001</div> <div>  </div> <div>3.92</div> </div> <div> <div>PGGT-D PGGC 6 PGGH-D 6</div> <div>  </div> <div>3.51</div> <div> <div>Gamma Ray</div> <div>— 1.07</div> </div> </div> <div> <div>Casing Co Tension</div> <div>TOOL ZERO</div> </div>			<div> <div>PEH-A PEH-A 11</div> <div>  </div> <div>17.81</div> </div> <div> <div>AH-64</div> <div>  </div> <div>17.27</div> </div> <div> <div>PGGT-D PGGC 6 PGGH-D 6</div> <div>  </div> <div>16.86</div> <div> <div>Gamma Ray</div> <div>— 1.07</div> </div> <div> <div>Casing Co Tension</div> <div>— TOOL ZERO</div> </div> </div> <div> <div>AH-283</div> <div>  </div> <div>15.08</div> </div> <div> <div>AH-CPST AH-CPST</div> <div>  </div> <div>14.92</div> </div> <div> <div>AH-7.0" MAXR AH-7.0" MAXR</div> <div>  </div> <div>12.01</div> </div> <div> <div>AH-Redundant fill sub AH-Redundant fill sub</div> <div>  </div> <div>9.26</div> </div>		

MIX

MAXIMUM STRING DIAMETER 5.75 IN
MEASUREMENTS RELATIVE TO TOOL ZERO
ALL LENGTHS IN METERS

Drawing Date: 6/12/2009
API #:

Production String	(in)		(m)	Well Schematic	(m)		(in)		Casing String
	OD	ID			MD	MD	OD	ID	
					19.9 19.9	10.000 10.750	7.000 10.750	Casing String Liner Hanger 	



Job Events Summary

MAXIS Field Log

Schlumberger Job Event Summary						
	Time	Elapsed Time	Depth (M)		File	
Simulated Log	12-Jun-2009	3:50	000:02		PERFO_010LUP	
OP Checked toolstring						
Log Pass (down)	12-Jun-2009	4:30	000:56	4.7 - 3098.6	PERFO_011LDP	
RIH with JB						
Log Pass (up)	12-Jun-2009	5:29	000:10	3091.7 - 2995.1	PERFO_013LUP	
JB Correlation log						
Log Pass (up)	12-Jun-2009	5:49	000:60	3097.7 - -11.7	PERFO_016LUP	
POOH with JB						
Log Pass (down)	12-Jun-2009	6:59	000:42	-2.1 - 3057.6	PERFO_017LDP	
RIH for 2nd JB run with 5.5" Gauge						
Log Pass (up)	12-Jun-2009	7:59	000:08	3091.6 - 2987.6	PERFO_022LUP	
JB # 2 Correlation pass						
Log Pass (up)	12-Jun-2009	8:07	000:19	2986.3 - 2057.6	PERFO_023LUP	
POOH with JB # 2						

Simulated Log	12-Jun-2009	9:01	000:02			PERFO_026LUP
Hot checked toolstring						
Log Pass (down)	12-Jun-2009	10:43	000:47	552.0 -	3049.8	PERFO_028LDP
RIH with MaxR toolstring						
Log Pass (up)	12-Jun-2009	11:55	000:06	3068.3 -	3008.4	PERFO_037LUP
MaxR correlation						
Log Pass (up)	12-Jun-2009	12:13	000:16	3068.0 -	2965.1	PERFO_040LUP
MaxR setting						

Schlumberger

MaxR with 4 1/2" HSD Gun Setting Pass

MAXIS Field Log

Company: Esso Australia Pty Ltd

Well: CBA F8

Output DLIS Files

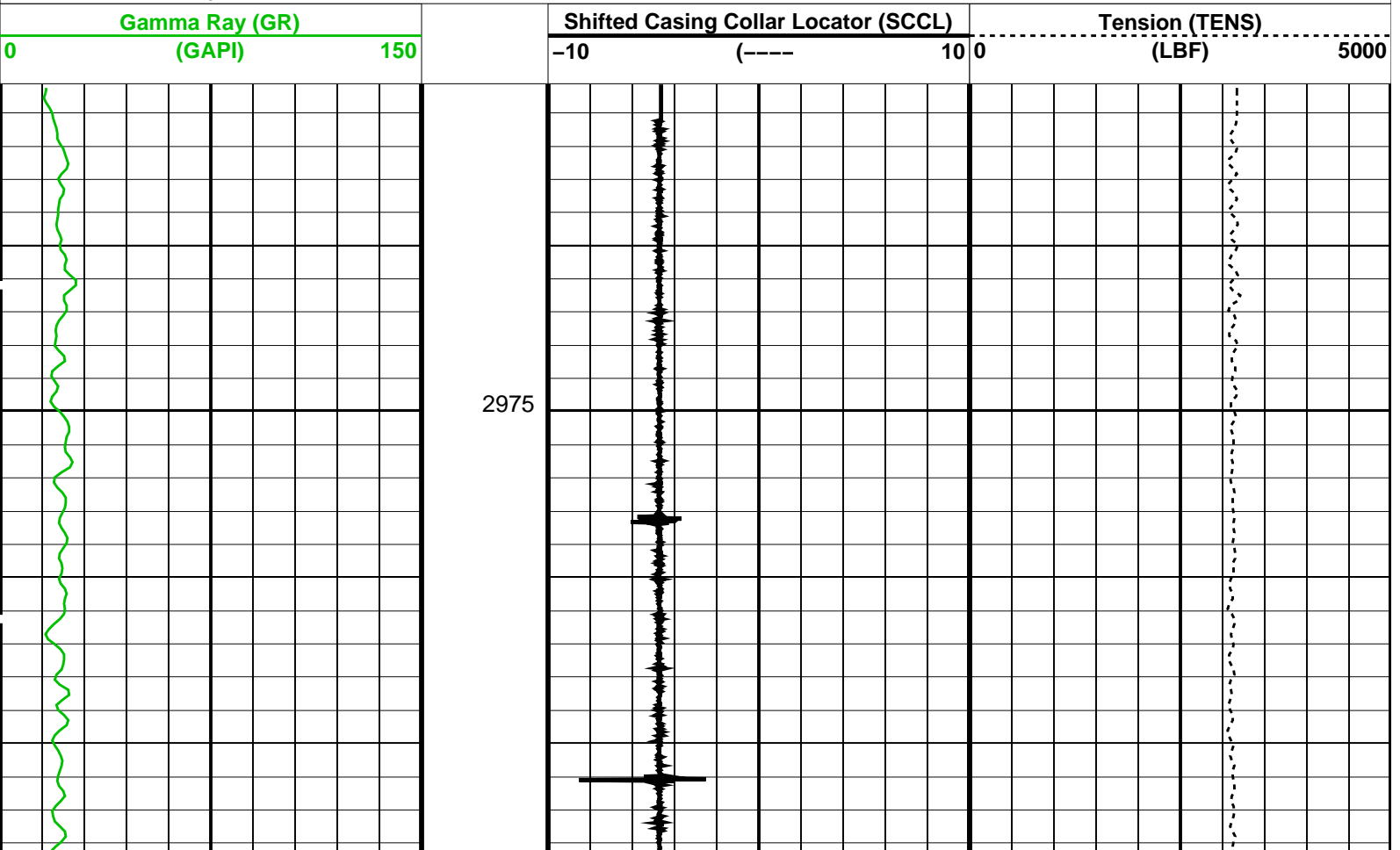
DEFAULT PERFO_040LUP FN:39 PRODUCER 12-Jun-2009 12:13 3068.0 M 2965.1 M

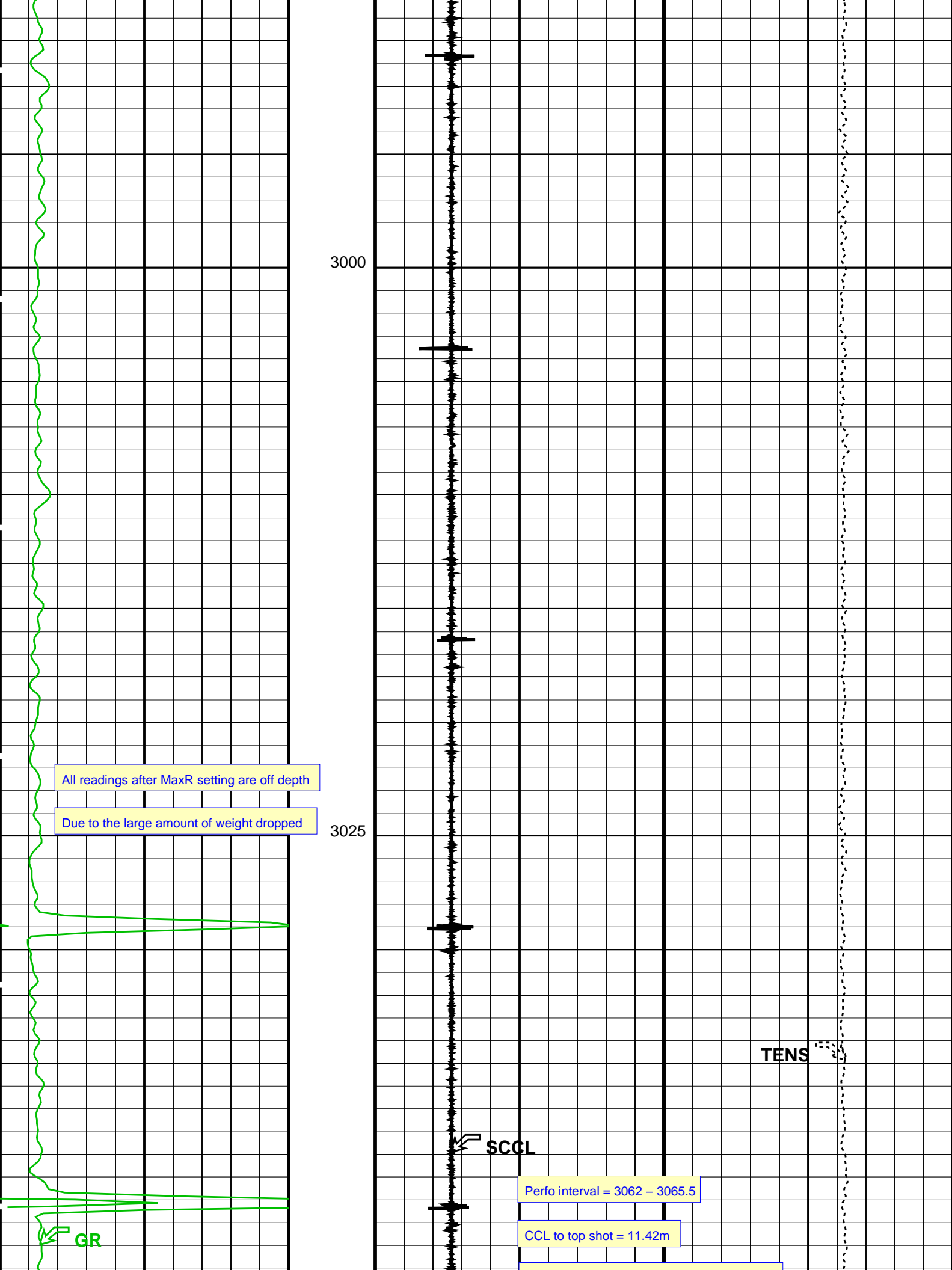
OP System Version: 17C0-154

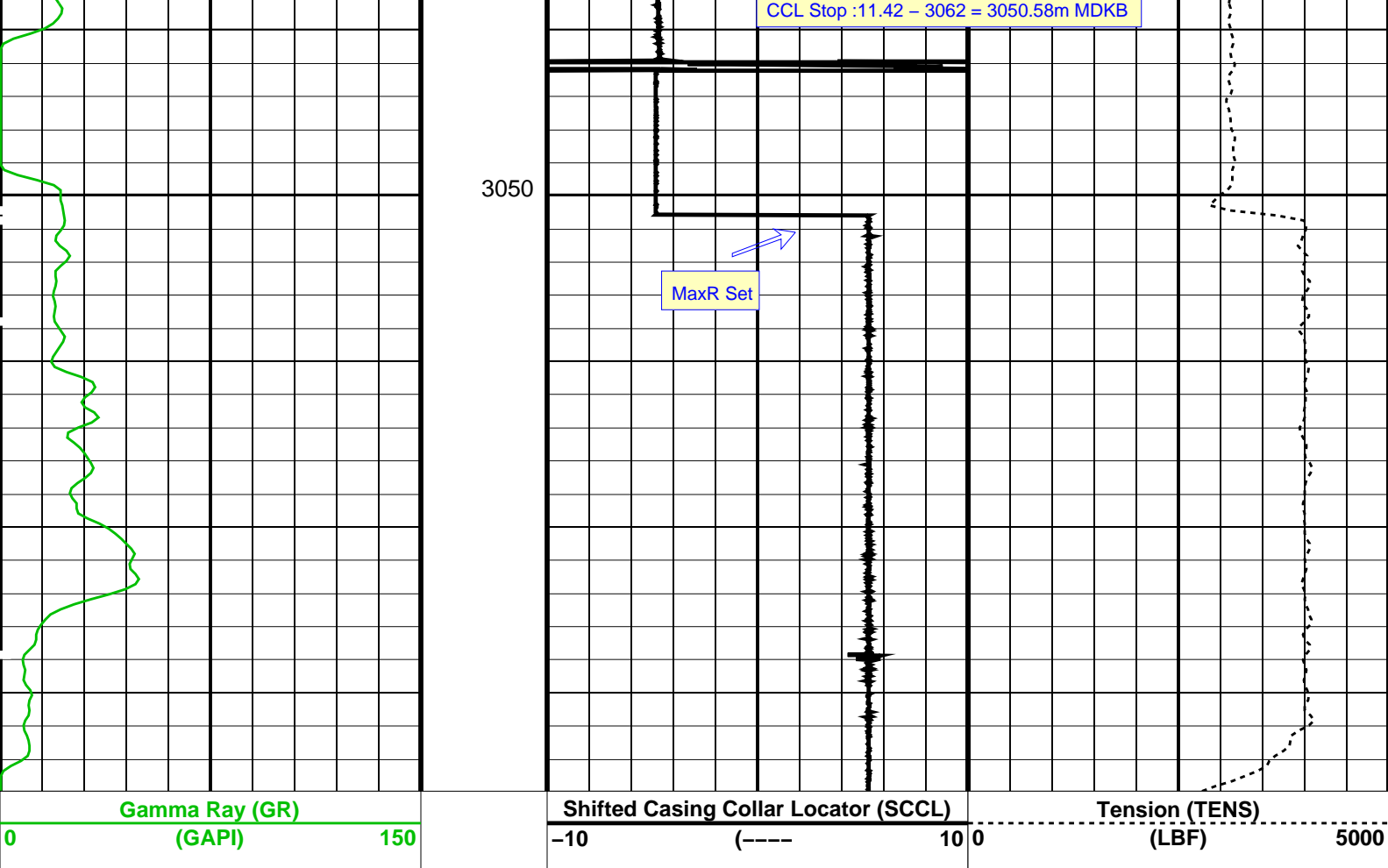
SHM_GUN 17C0-154 PGGT-D 17C0-154

PIP SUMMARY

☒ Time Mark Every 60 S







PIP SUMMARY

Time Mark Every 60 S

Format: PERFO_1 Vertical Scale: 1:200

Graphics File Created: 12-Jun-2009 12:13

OP System Version: 17C0-154

SHM_GUN

17C0-154

PGGT-D

17C0-154

Output DLIS Files

DEFAULT

PERFO_040LUP

FN:39

PRODUCER

12-Jun-2009 12:13

Schlumberger

**MaxR with 4 1/2" HSD Gun
Correlation Pass**

MAXIS Field Log

Company: Esso Australia Pty Ltd

Well: CBA F8

Output DLIS Files

DEFAULT

PERFO_037LUP

FN:36

PRODUCER

12-Jun-2009 11:55

3068.3 M

3008.4 M

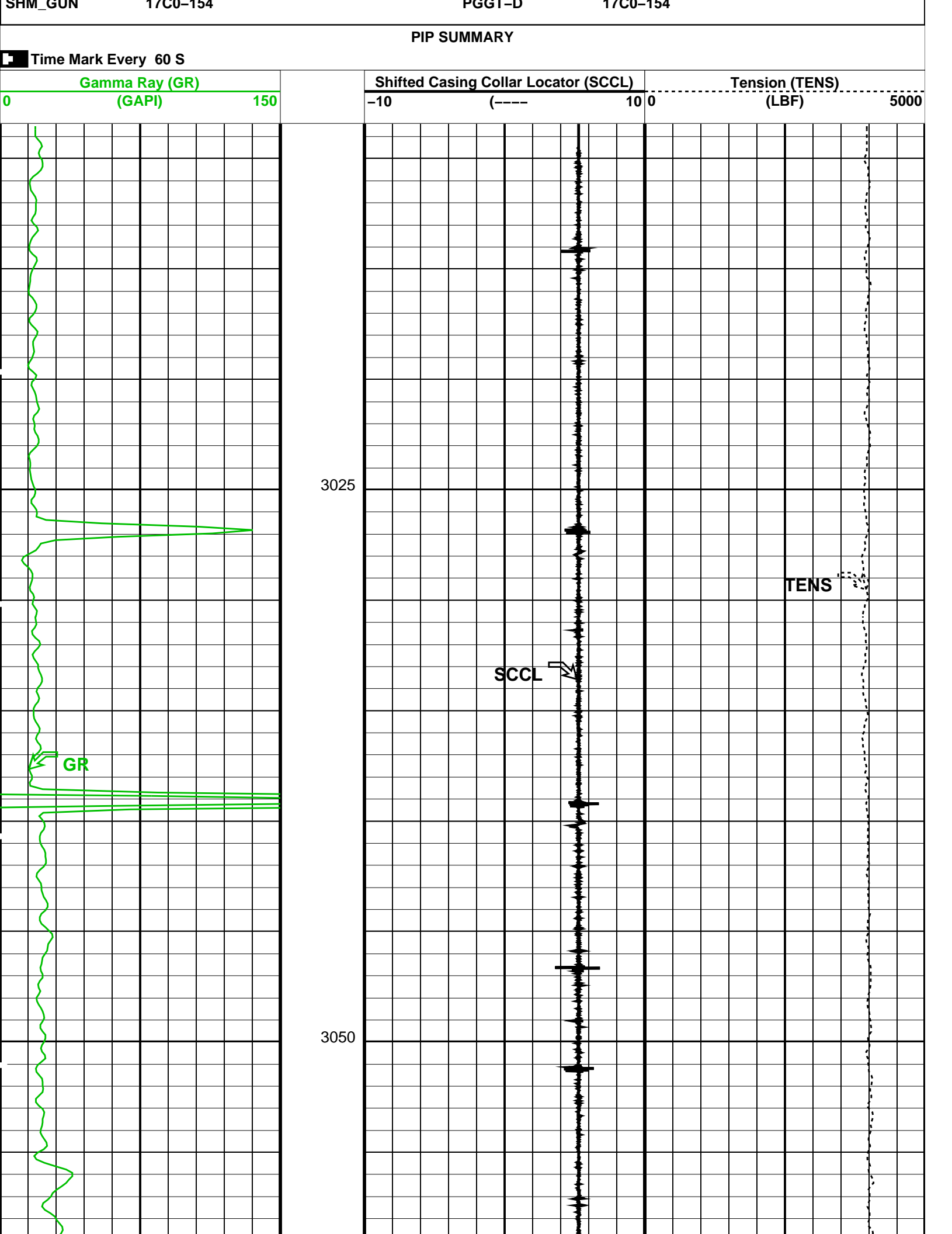
OP System Version: 17C0-154

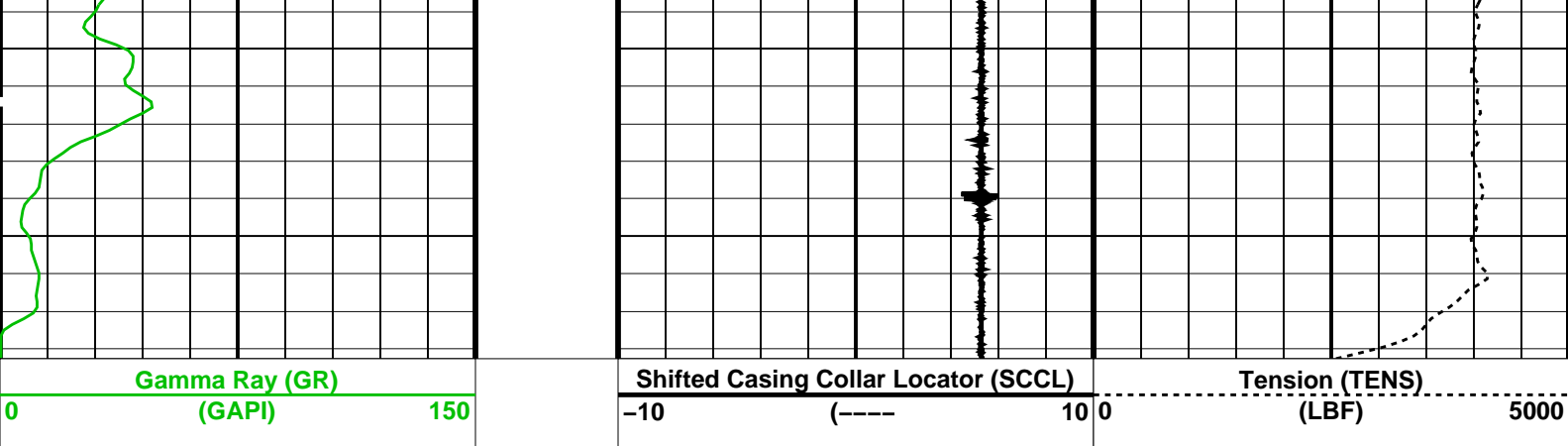
SHM_GUN

17C0-154

PGGT-D

17C0-154





PIP SUMMARY

Time Mark Every 60 S

Format: PERFO_1 Vertical Scale: 1:200

Graphics File Created: 12-Jun-2009 11:55

OP System Version: 17C0-154

SHM_GUN 17C0-154 PGGT-D 17C0-154

Output DLIS Files

DEFAULT PERFO_037LUP FN:36 PRODUCER 12-Jun-2009 11:55

Schlumberger

Junk Basket with 5.5" Gauge Ring
Correlation Pass

MAXIS Field Log

Company: Esso Australia Pty Ltd

Well: CBA F8

Output DLIS Files

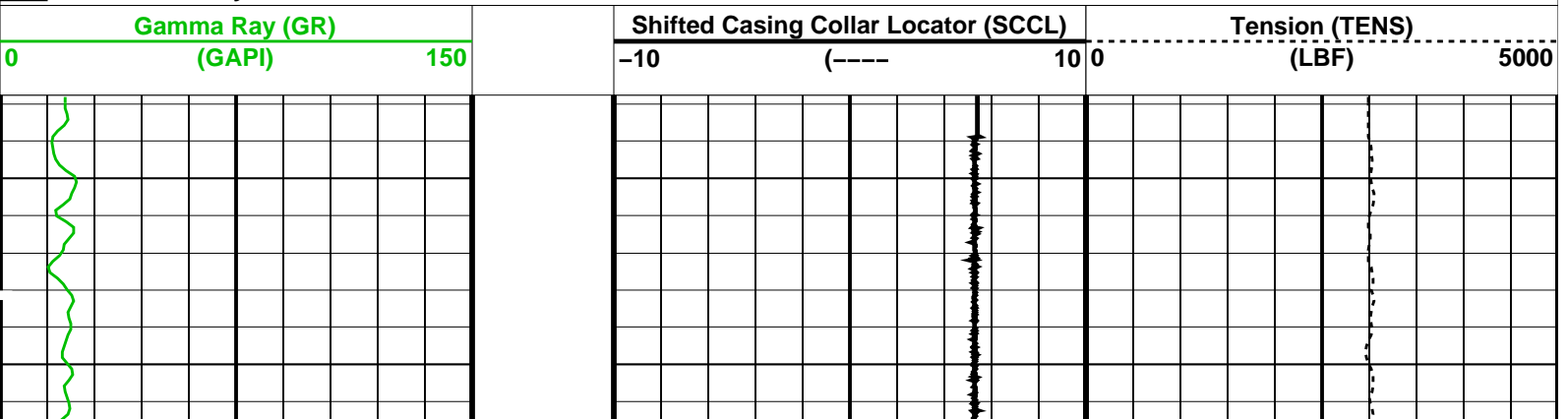
DEFAULT PERFO_022LUP FN:21 PRODUCER 12-Jun-2009 07:59 3091.6 M 2987.6 M

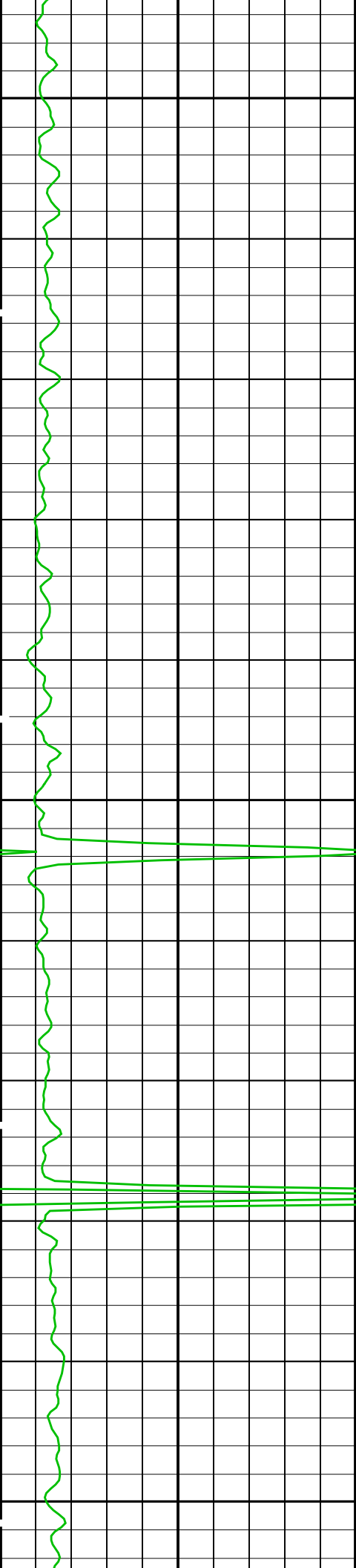
OP System Version: 17C0-154

SHM_GUN 17C0-154 PGGT-D 17C0-154

PIP SUMMARY

Time Mark Every 60 S

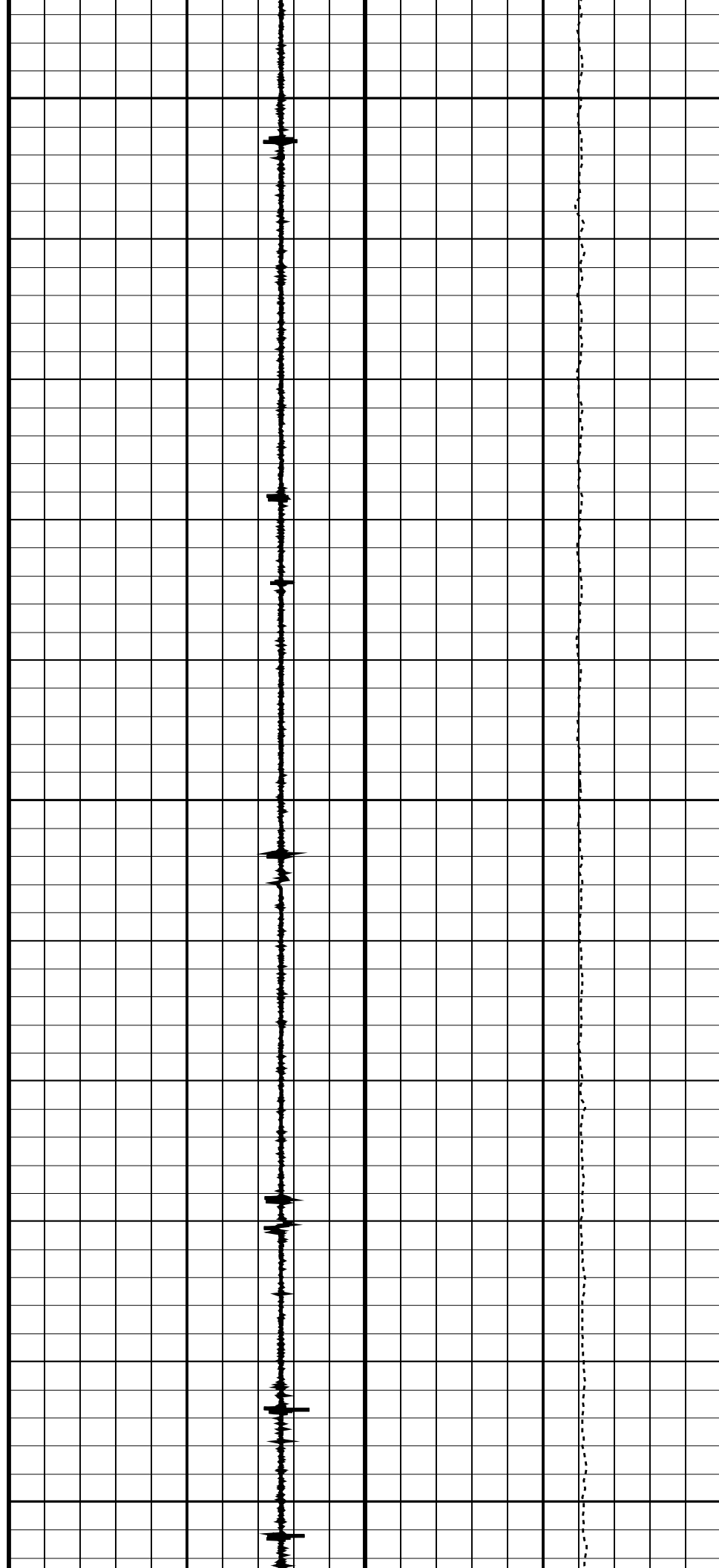


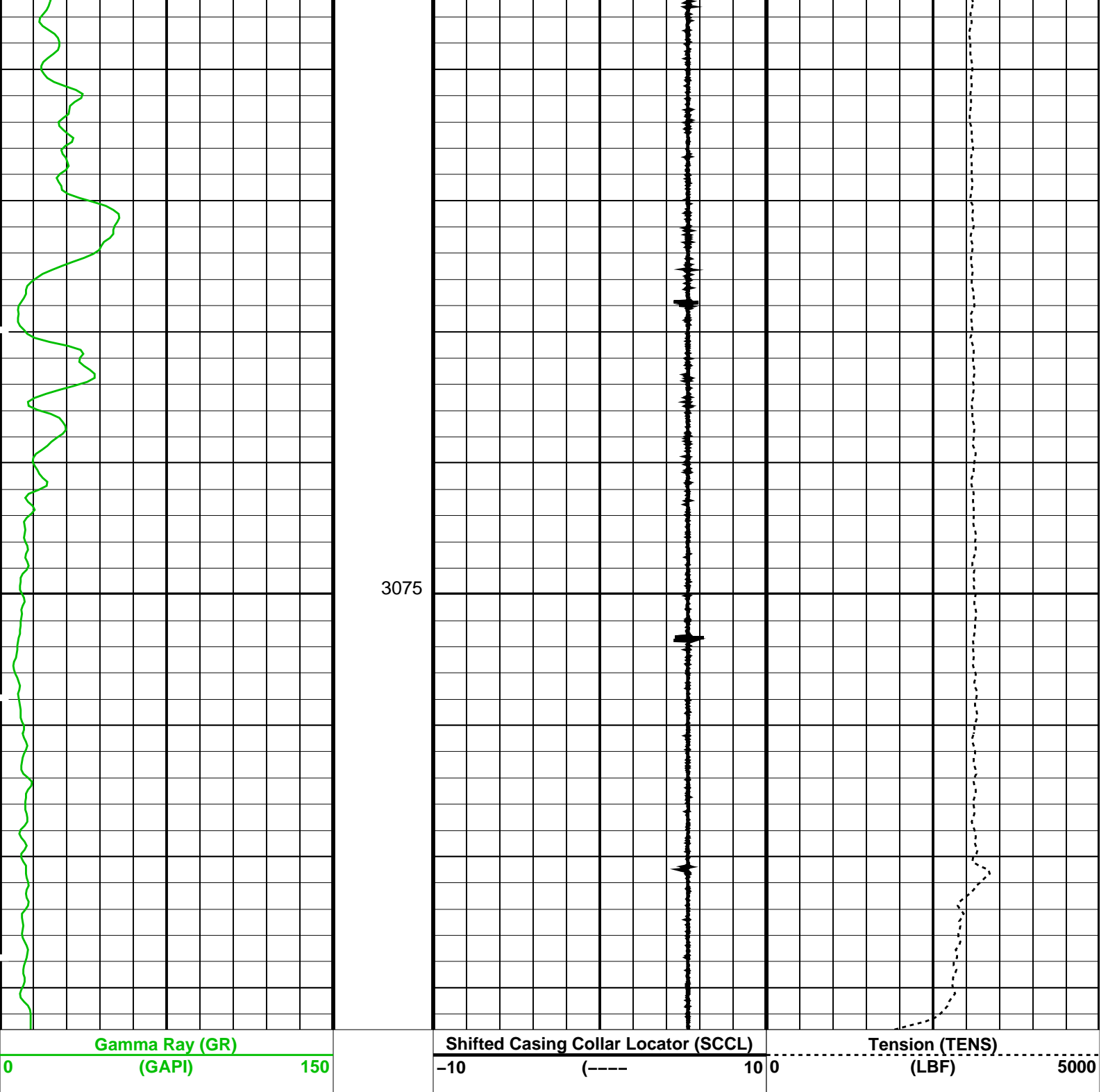


3000

3025

3050





PIP SUMMARY

Time Mark Every 60 S

Format: PERFO_1 Vertical Scale: 1:200

Graphics File Created: 12-Jun-2009 07:59

OP System Version: 17C0-154

SHM_GUN

17C0-154

PGGT-D

17C0-154

Output DLIS Files

DEFAULT

PERFO_022LUP

FN:21

PRODUCER

12-Jun-2009 07:59

Junk Basket with 6" Gauge Ring

MAXIS Field Log

Company: Esso Australia Pty Ltd

Well: CBA F8

Input DLIS Files

DEFAULT	PERFO_013LUP	FN:12	PRODUCER	12-Jun-2009 05:29	3091.7 M	2995.1 M
---------	--------------	-------	----------	-------------------	----------	----------

Output DLIS Files

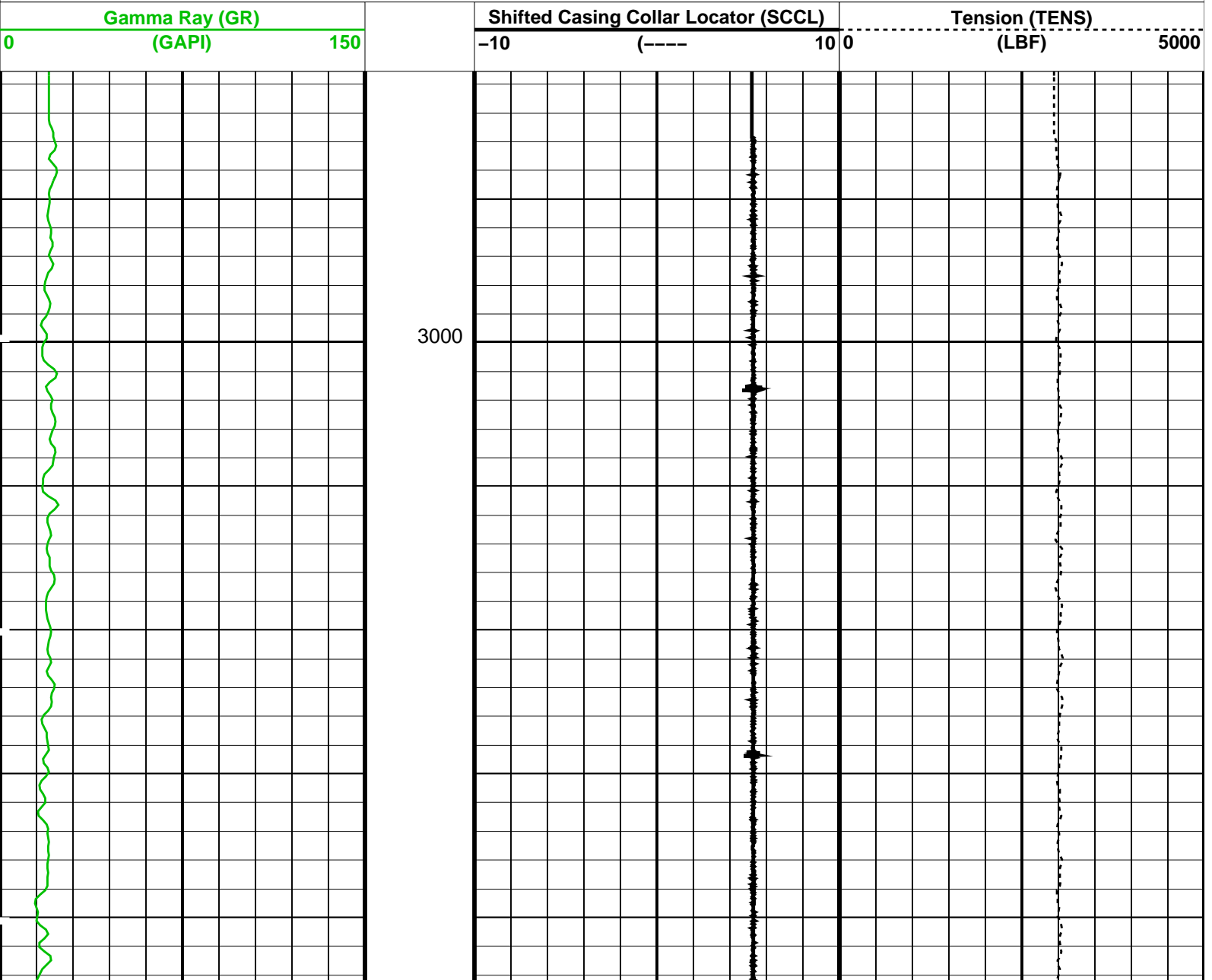
DEFAULT	PERFO_015PUP	FN:14	PRODUCER	12-Jun-2009 05:42	3088.2 M	2990.4 M
---------	--------------	-------	----------	-------------------	----------	----------

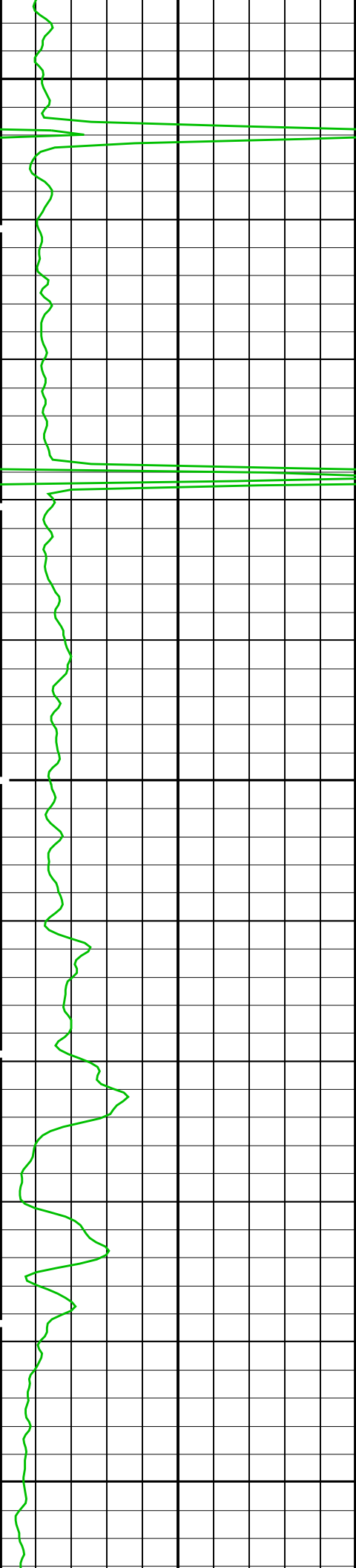
OP System Version: 17C0-154

SHM_GUN	17C0-154	PGGT-D	17C0-154
---------	----------	--------	----------

PIP SUMMARY

Time Mark Every 60 S

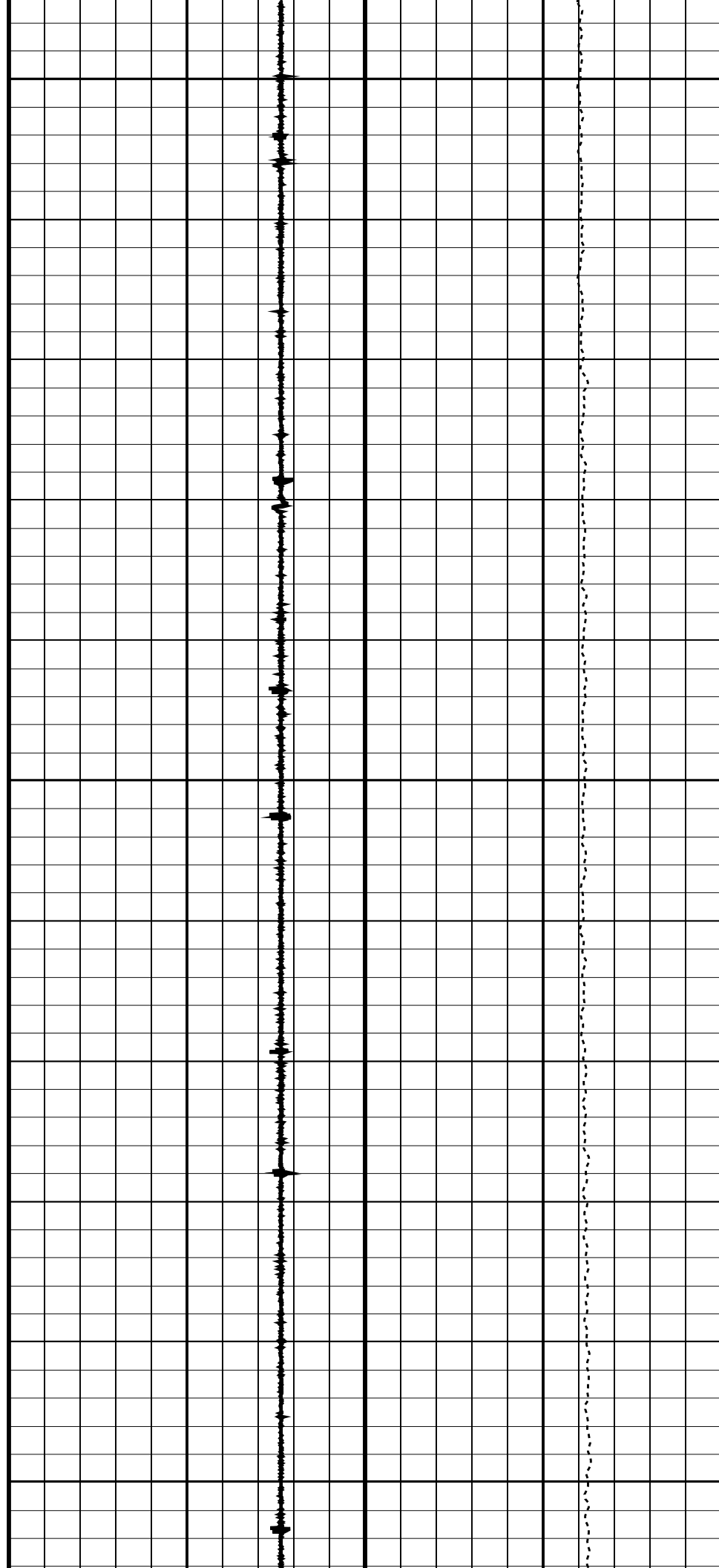


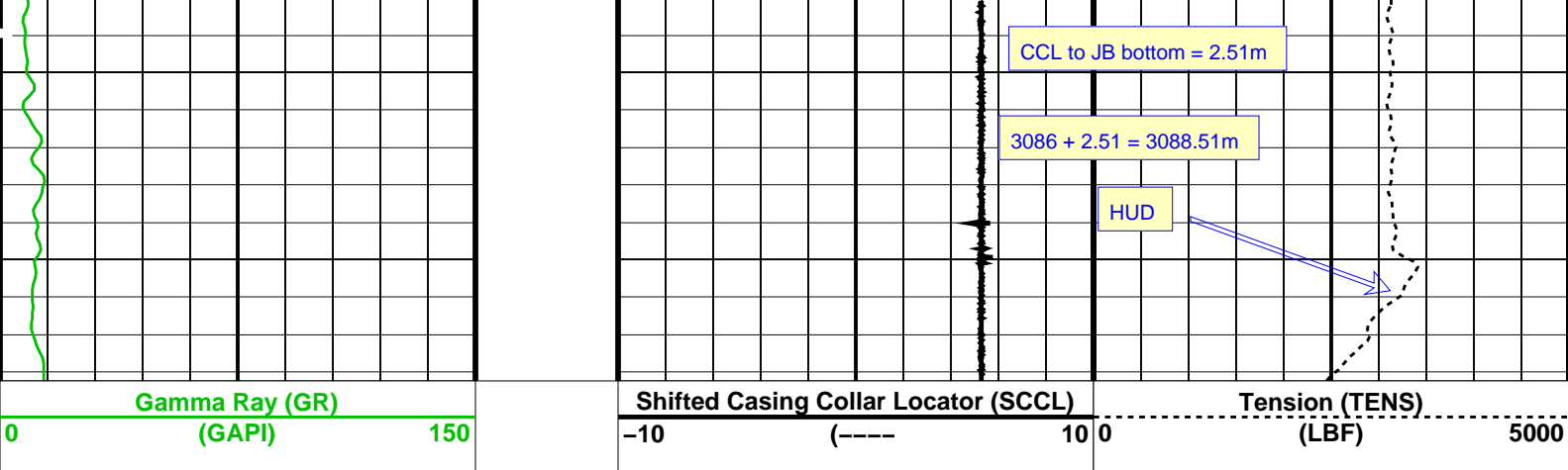


3025

3050

3075





PIP SUMMARY

Time Mark Every 60 S

Parameters

DLIS Name	Description	Value
DO	System and Miscellaneous	
PP	Depth Offset for Playback	-3.5 M
	Playback Processing	NORMAL

Format: PERFO_1 Vertical Scale: 1:200 Graphics File Created: 12-Jun-2009 05:42

OP System Version: 17C0-154

SHM_GUN 17C0-154 PGGT-D 17C0-154

Input DLIS Files

DEFAULT PERFO_013LUP FN:12 PRODUCER 12-Jun-2009 05:29 3091.7 M 2995.1 M

Output DLIS Files

DEFAULT PERFO_015PUP FN:14 PRODUCER 12-Jun-2009 05:42

Company: Esso Australia Pty Ltd

Schlumberger

Well: CBA F8
Field: Cobia
Rig: Rig 175
Country: Australia

Junk Basket with 6" Gauge Ring
Max-R Setting Record
12-Jun-2009