

Company: Esso Australia Pty Ltd.

Well: A-27a
Field: Bream A
Rig: Prod4 / Crane
Country: Australia

RST-C Sigma Survey
2 1/8" Powerjet MWPT Perforation Record
4.5" Posiset Plug Setting Record

Prod4 / Crane

Bream A

Gippsland

A-27a

Esso Australia Pty Ltd.

LOCATION

Gippsland Basin Bass Strait

Elev.: K.B. 33.50 m
G.L. -59.00 m
D.F. 33.50 m

Permanent Datum: M.S.L.
Log Measured From: D.F.
Drilling Measured From: D.F.

Elev.: 0.00 m
33.50 m above Perm. Datum

State: Victoria

Max. Well Deviation 67 deg

Longitude 147 46'15"E

Latitude 038 30'04"S

Logging Date	24-Feb-2009		
Run Number	1 through 6		
Depth Driller	3527 m		
Schlumberger Depth	3527 m		
Bottom Log Interval	3490 m		
Top Log Interval	2100 m		
Casing Fluid Type	Production Fluids		
Salinity			
Density			
Fluid Level	1325 m		
BIT/CASING/TUBING STRING			
Bit Size	8.000 in		
From	1345 m		
To	3557 m		
Casing/Tubing Size	4.500 in		
Weight	38.6 lbm/ft		
Grade	13CR		
From	2097 m		
To	3557 m		
Maximum Recorded Temperatures	208 degF		
Logger On Bottom	24-Feb-2009		11:00
Unit Number	889	Prod4 / Ausl	
Recorded By	S Gilbert.		
Witnessed By	B White		

			Run 1
Oil Density			
Water Salinity			
Gas Gravity			
Bo			
Bw			
1/Bg			
Bubble Point Pressure			
Bubble Point Temperature			
Solution GOR			
Maximum Deviation			67 deg
CEMENTING DATA			
Primary/Squeeze			Primary
Casing String No			
Lead Cement Type			
Volume			
Density			
Water Loss			
Additives			
Tail Cement Type			
Volume			
Density			
Water Loss			
Additives			
Expected Cement Top			
Logging Date			
Run Number			
Depth Driller			
Schlumberger Depth			
Bottom Log Interval			
Top Log Interval			
Casing Fluid Type			
Salinity			
Density			
Fluid Level			
BIT/CASING/TUBING STRING			
Bit Size			
From			
To			
Casing/Tubing Size			
Weight			
Grade			
From			
To			
Maximum Recorded Temperatures			
Logger On Bottom			
Unit Number			
Recorded By			
Witnessed By			

DEPTH SUMMARY LISTING

Date Created: 23-FEB-2009 16:46:06

Depth System Equipment

Depth Measuring Device		Tension Device		Logging Cable	
Type:	IDW-EB	Type:	PSDS/OSDS	Type:	2-32ZT
Serial Number:	6373	Serial Number:	325357	Serial Number:	207308
Calibration Date:	2-Dec-2008	Calibration Date:	23-Feb-2009	Length:	6250 M
Calibrator Serial Number:	30	Calibrator Serial Number:	1174	Conveyance Method: Wireline Rig Type: LAND	
Calibration Cable Type:	2-23ZT	Number of Calibration Points:	9		
Wheel Correction 1:	-1	Calibration RMS:	16		
Wheel Correction 2:	-2	Calibration Peak Error:	27		

Depth Control Parameters

Log Sequence:	Subsequent Log In the Well
Reference Log Name:	Solar Composite Log
Reference Log Run Number:	
Reference Log Date:	.

Depth Control Remarks

1. IDW used as primary depth control.
2. Z-chart used as secondary backup
3. Log Correlated on depth over Zone of interest
4.
5.
6.

DISCLAIMER

THE USE OF AND RELIANCE UPON THIS RECORDED-DATA BY THE HEREIN NAMED COMPANY (AND ANY OF ITS AFFILIATES, PARTNERS, REPRESENTATIVES, AGENTS, CONSULTANTS AND EMPLOYEES) IS SUBJECT TO THE TERMS AND CONDITIONS AGREED UPON BETWEEN SCHLUMBERGER AND THE COMPANY, INCLUDING: (a) RESTRICTIONS ON USE OF THE RECORDED-DATA; (b) DISCLAIMERS AND WAIVERS OF WARRANTIES AND REPRESENTATIONS REGARDING COMPANY'S USE OF AND RELIANCE UPON THE RECORDED-DATA; AND (c) CUSTOMER'S FULL AND SOLE RESPONSIBILITY FOR ANY INFERENCE DRAWN OR DECISION MADE IN CONNECTION WITH THE USE OF THIS RECORDED-DATA.

OTHER SERVICES1
OS1: None
OS2:
OS3:
OS4:
OS5:

REMARKS: RUN NUMBER 1
Log correlated to ExxonMobil composite supplied with logging program.
Maximum well deviation = 67deg @ 1380m MDKB.
Objectives: RST-C Sigma survey from 3490m m to 3430m MDKB. Making two passes at 900 ft/hr.
Following this survey the well will be re-perforated and watered out zone plugged off with a 4.5" MPBT plug.
The Sum of the two Casing weights 26lb/ft and 12.6lb/ft were used for the RST casing Weight in the Parameters
RST SURVEY --- SBHP = 2639 psia. & SBHT = 206.6 degf. @ 3572m MDKB

New Perforation Zone = 3471m to 3472.5m MDKB
Top Shot @ 3471 m MDKB
CCL to Top Shot = 3.45 m
CCL Stop Depth = 3467.55 m MDKB
4.5" Posiset Plug top of Seal Set @ 3478 m MDKB
CCL to Top of Seal = 6.8 m
CCL stop Depth = 3471.2 m MDKB
1m of Cement dumped in 1 Run.
CCL to Bottom of Dump Bailer = 6m

Crew : C Shiells , N Simmons

RUN 1 SERVICE ORDER #: AYCW-00001 PROGRAM VERSION: 16C0-147 FLUID LEVEL: 1325 m					
LOGGED INTERVAL	START	STOP	LOGGED INTERVAL	START	STOP

EQUIPMENT	DESCRIPTION
-----------	-------------

	RUN 1	RUN 2
1	1	1
2	1	1
3	1	1
4	1	1
5	1	1
6	1	1
7	1	1
8	1	1
9	1	1
10	1	1
11	1	1
12	1	1
13	1	1
14	1	1
15	1	1
16	1	1
17	1	1
18	1	1
19	1	1
20	1	1
21	1	1
22	1	1
23	1	1
24	1	1
25	1	1
26	1	1
27	1	1
28	1	1
29	1	1
30	1	1
31	1	1
32	1	1
33	1	1
34	1	1
35	1	1
36	1	1
37	1	1
38	1	1
39	1	1
40	1	1
41	1	1
42	1	1
43	1	1
44	1	1
45	1	1
46	1	1
47	1	1
48	1	1
49	1	1
50	1	1
51	1	1
52	1	1
53	1	1
54	1	1
55	1	1
56	1	1
57	1	1
58	1	1
59	1	1
60	1	1
61	1	1
62	1	1
63	1	1
64	1	1
65	1	1
66	1	1
67	1	1
68	1	1
69	1	1
70	1	1
71	1	1
72	1	1
73	1	1
74	1	1
75	1	1
76	1	1
77	1	1
78	1	1
79	1	1
80	1	1
81	1	1
82	1	1
83	1	1
84	1	1
85	1	1
86	1	1
87	1	1
88	1	1
89	1	1
90	1	1
91	1	1
92	1	1
93	1	1
94	1	1
95	1	1
96	1	1
97	1	1
98	1	1
99	1	1
100	1	1

MWPM-AA	SURFACE EQUIPMENT	MPBM	SURFACE EQUIPMENT
---------	-------------------	------	-------------------

DOWNHOLE EQUIPMENT	DOWNHOLE EQUIPMENT
--------------------	--------------------

Item	Value	Item	Value
SWBS-B 789	12.39	SWBS-B 785	13.56
SWBS-B 788	11.70	SWBS-B 786	12.87
SWBS-B 787	11.01	SWBS-B 787	12.18
SWBS-B 786	10.33	SWBS-B 788	11.50
SWBS-B 785	9.64	SWBS-S 789	10.81
SWHS-A 759	8.96	SWHS-A 759	10.13
AH-124 7002	8.63	CCL-PCCL 07336	9.80
MWGT-AA 19	8.53	MPSU-BA 20	9.34
MWPG-AA 19			
MWGH-AA 19			
MWPT-CA 11	7.55		
MWPH-AA 94			
MWPS-AA 11			

AH-Flex Joint 42

AH-Flex Joint 42

SAH-G 1035

SAH-G 1035

MPD-MB 336

MPD-MB 336

AH-ESIC 4007395

AH-ESIC 4007395

AH-Firing Head 1

MWP_GUN

GUN-2 1/8" Phased Powerjet 1

4.73

4.27

3.94

3.40

2.97

2.74

TOOL BOTTOM

MAXIMUM STRING DIAMETER 2.13 IN
MEASUREMENTS RELATIVE TO TOOL ZERO
ALL LENGTHS IN METERS

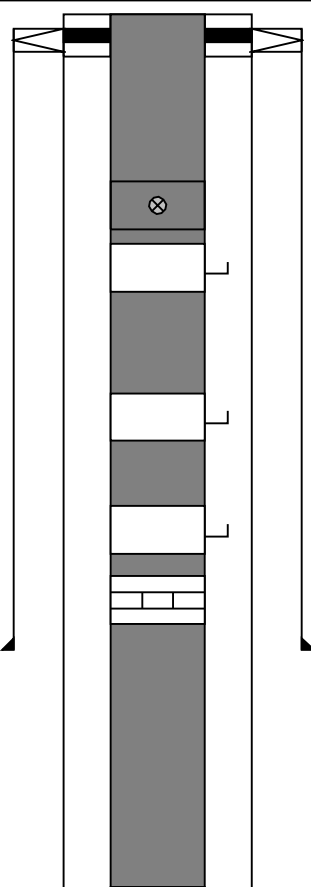
MPEX-AA

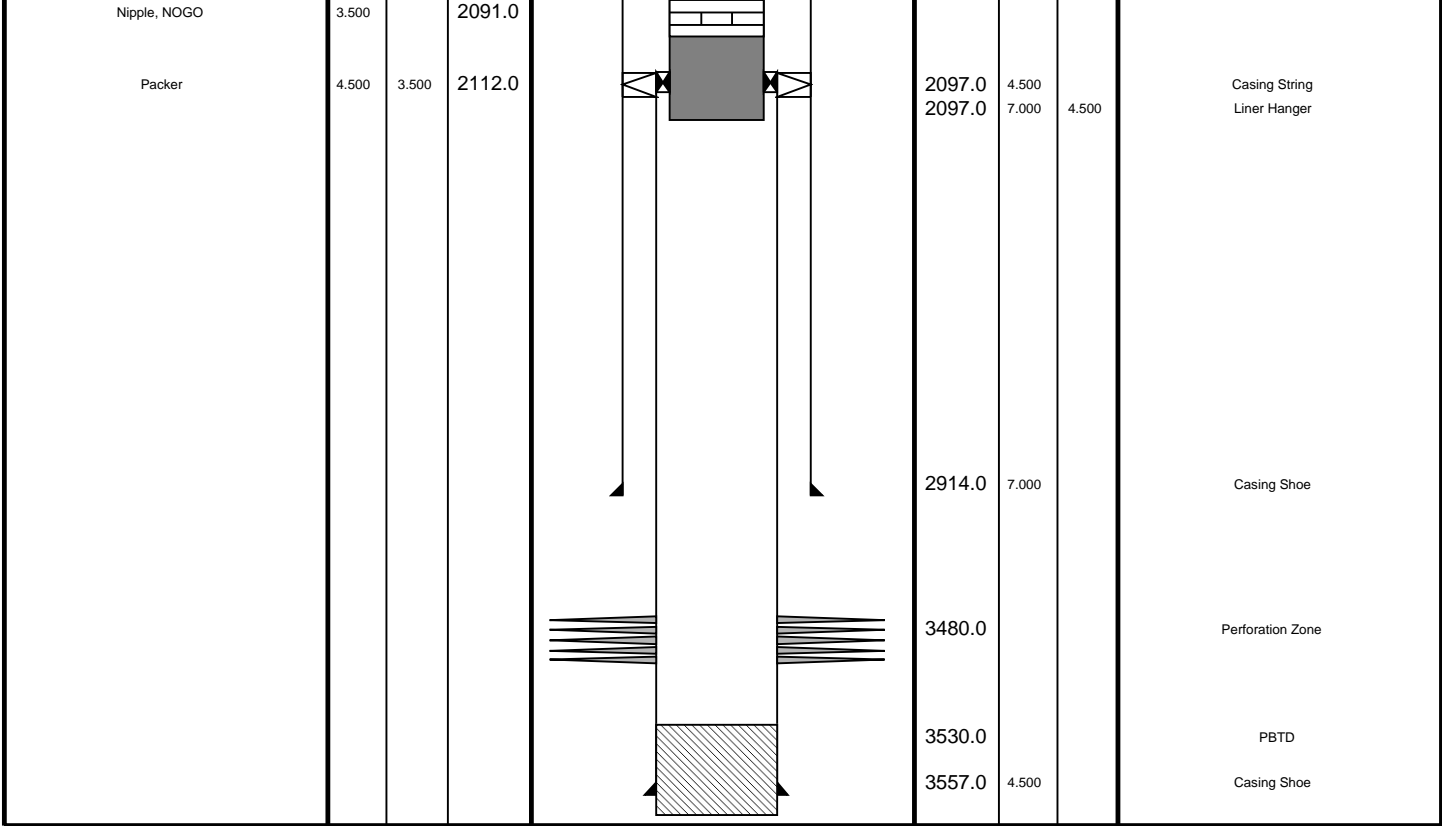
MPEX-AA

3.10

TOOL BOTTOM

MAXIMUM STRING DIAMETER 1.71 IN
MEASUREMENTS RELATIVE TO TOOL ZERO
ALL LENGTHS IN METERS

Production String	(in)		(m)	Well Schematic	(m)	(in)		Casing String
	OD	ID	MD		MD	OD	ID	
Tubing Hanger Tubing	7.000	3.500	11.7		12.9	7.000		Casing String Liner Hanger
	3.500		11.7		12.9	10.750	7.000	
Shutin Valve	3.500		443.0					
Gas Lift Mandrel	3.500		577.0					
Gas Lift Mandrel	3.500		1179.0					
Gas Lift Mandrel	3.500		1639.0					
Nipple	3.500		1665.0					
					1345.0	10.750		Casing Shoe



Job Events Summary

MAXIS Field Log

Schlumberger Job Event Summary

Time	Elapsed Time	Depth (M)	File
------	--------------	-----------	------

Log Pass (up)	24-Feb-2009 11:28	000:10	3507.5 - 3414.7	RST_PSP_010LUP
Log Pass (up)	24-Feb-2009 11:53	000:18	3507.8 - 3420.0	RST_PSP_013LUP
Log Pass (up)	24-Feb-2009 12:15	000:20	3500.9 - 3414.4	RST_PSP_016LUP
Log Pass (up)	25-Feb-2009 12:06	000:04	3479.7 - 3447.0	PERFO_029LUP
Log Pass (up)	25-Feb-2009 12:12	000:34	3477.3 - 3445.0	PERFO_030LUP
Station Log	25-Feb-2009 12:16	000:25	3467.5	PERFO_031LTP
Log Pass (down)	25-Feb-2009 13:52	000:56	-8.7 - 3522.6	PERFO_035LDP
Log Pass (up)	26-Feb-2009 8:05	000:07	3500.2 - 3461.9	MPBT_056LUP
Simulated Log	26-Feb-2009 8:20	000:18		MPBT_057LUP
Log Pass (up)	26-Feb-2009 8:39	000:12	3471.1 - 3412.8	MPBT_058LUP
Log Pass (down)	26-Feb-2009 10:10	000:49	-4.7 - 3449.0	PERFO_063LDP
Log Pass (up)	26-Feb-2009 10:59	000:10	3474.1 - 3443.5	PERFO_064LUP
Log Pass (up)	26-Feb-2009 13:08	000:12	3474.6 - 3414.7	PERFO_067LUP



Cement Dump Pass

MAXIS Field Log

Output DLIS Files

DEFAULT PERFO_067LUP FN:66 PRODUCER 26-Feb-2009 13:08 3474.6 M 3414.7 M

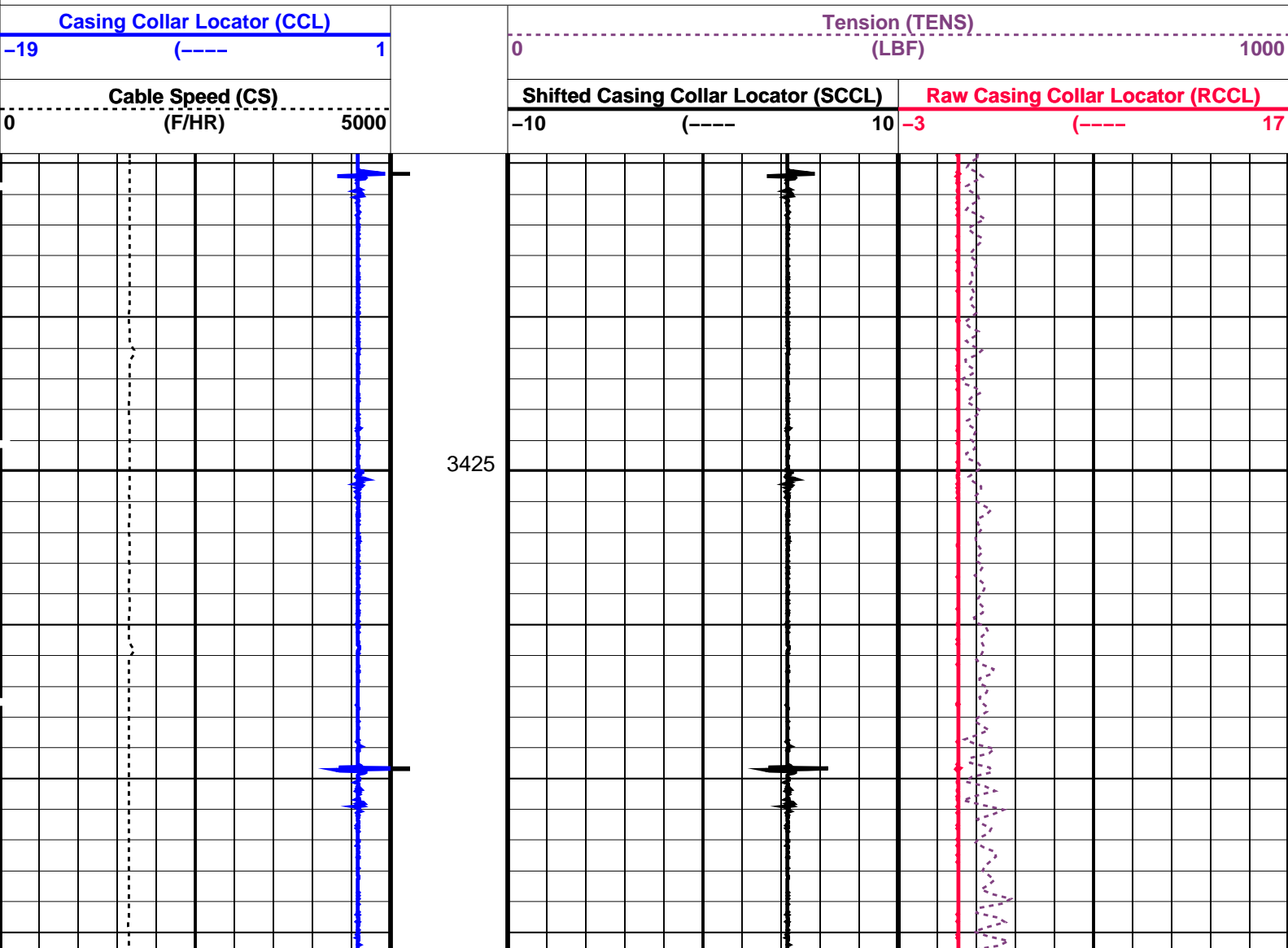
OP System Version: 16C0-147
MCM

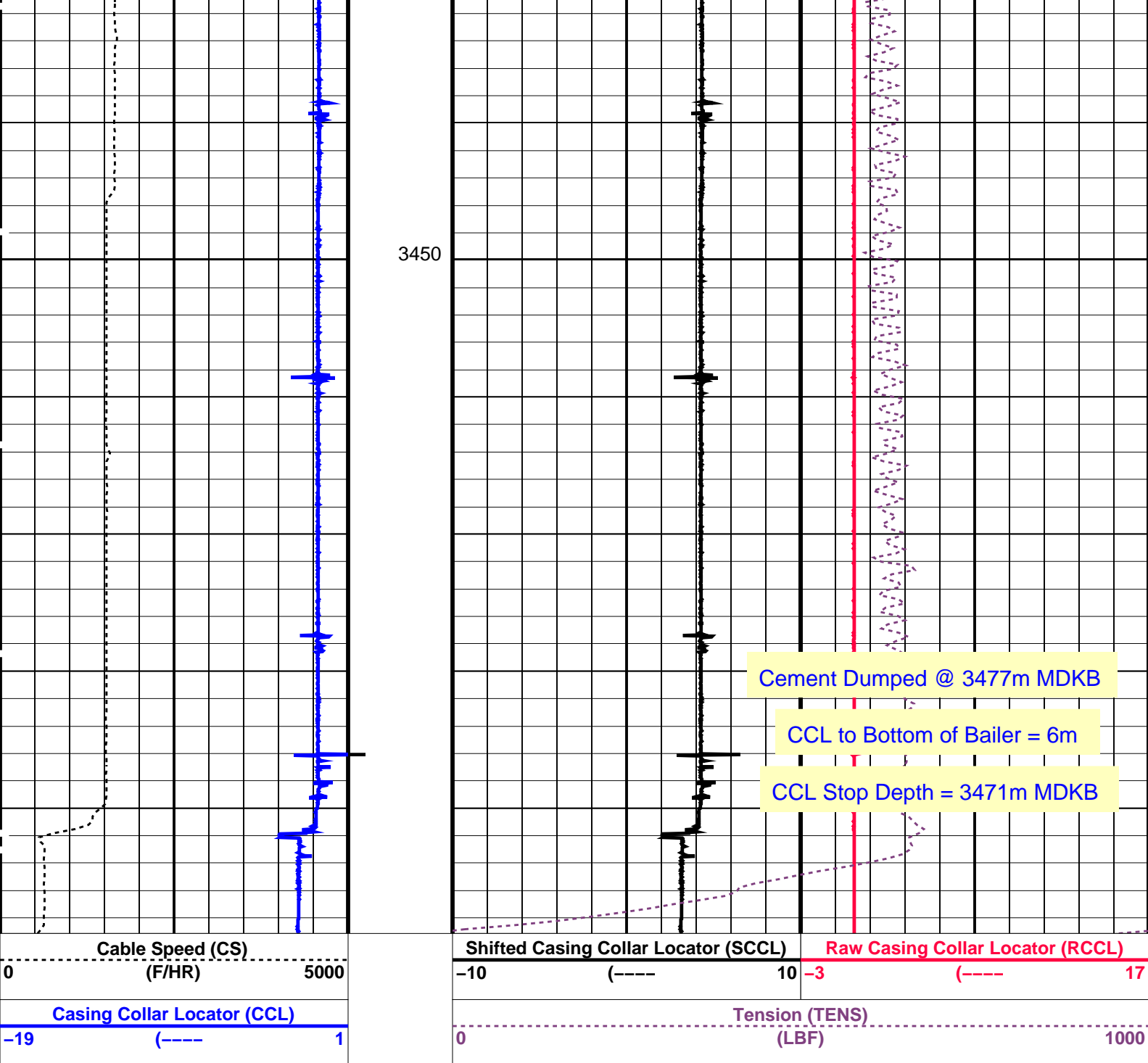
SHM_GUN 16C0-147 CCL-L 16C0-147

PIP SUMMARY

└─ Casing Collars

Time Mark Every 60 S





PIP SUMMARY

Time Mark Every 60 S

Parameters

DLIS Name	Description	Value
CCLD	CCL-L: Casing Collar Locator	12 IN
CCLT	CCL reset delay	0.3 V
CCLT	CCL Detection Level	

Format: PERFO_1 Vertical Scale: 1:200 Graphics File Created: 26-Feb-2009 13:08

OP System Version: 16C0-147
MCM

SHM_GUN 16C0-147 CCL-L 16C0-147

Output DLIS Files

DEFAULT PERFO 067LUP FN:66 PRODUCER 26-Feb-2009 13:08



Water Dump Pass

MAXIS Field Log

Output DLIS Files

DEFAULT PERFO_064LUP FN:63 PRODUCER 26-Feb-2009 10:59 3474.1 M 3443.5 M

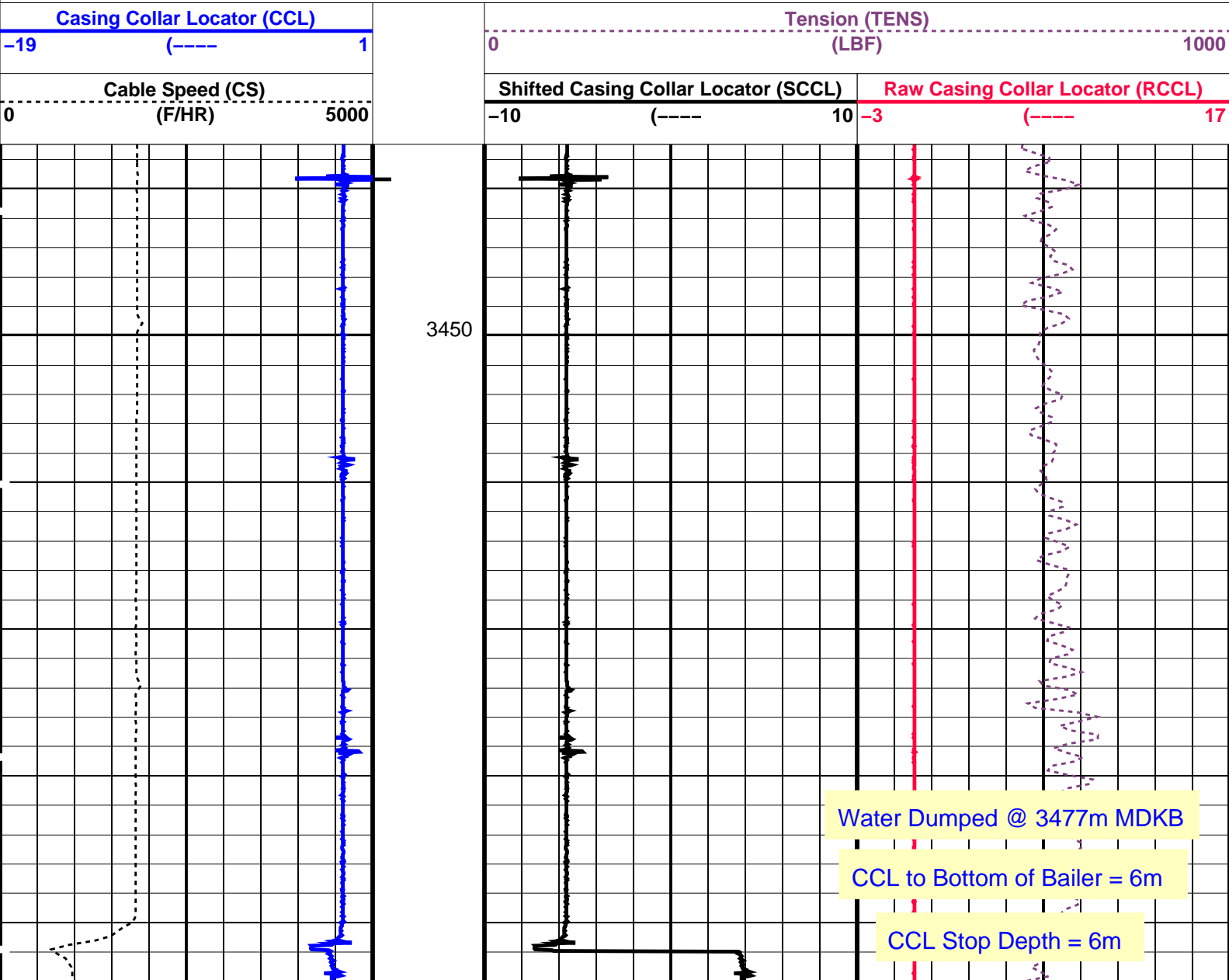
OP System Version: 16C0-147
MCM

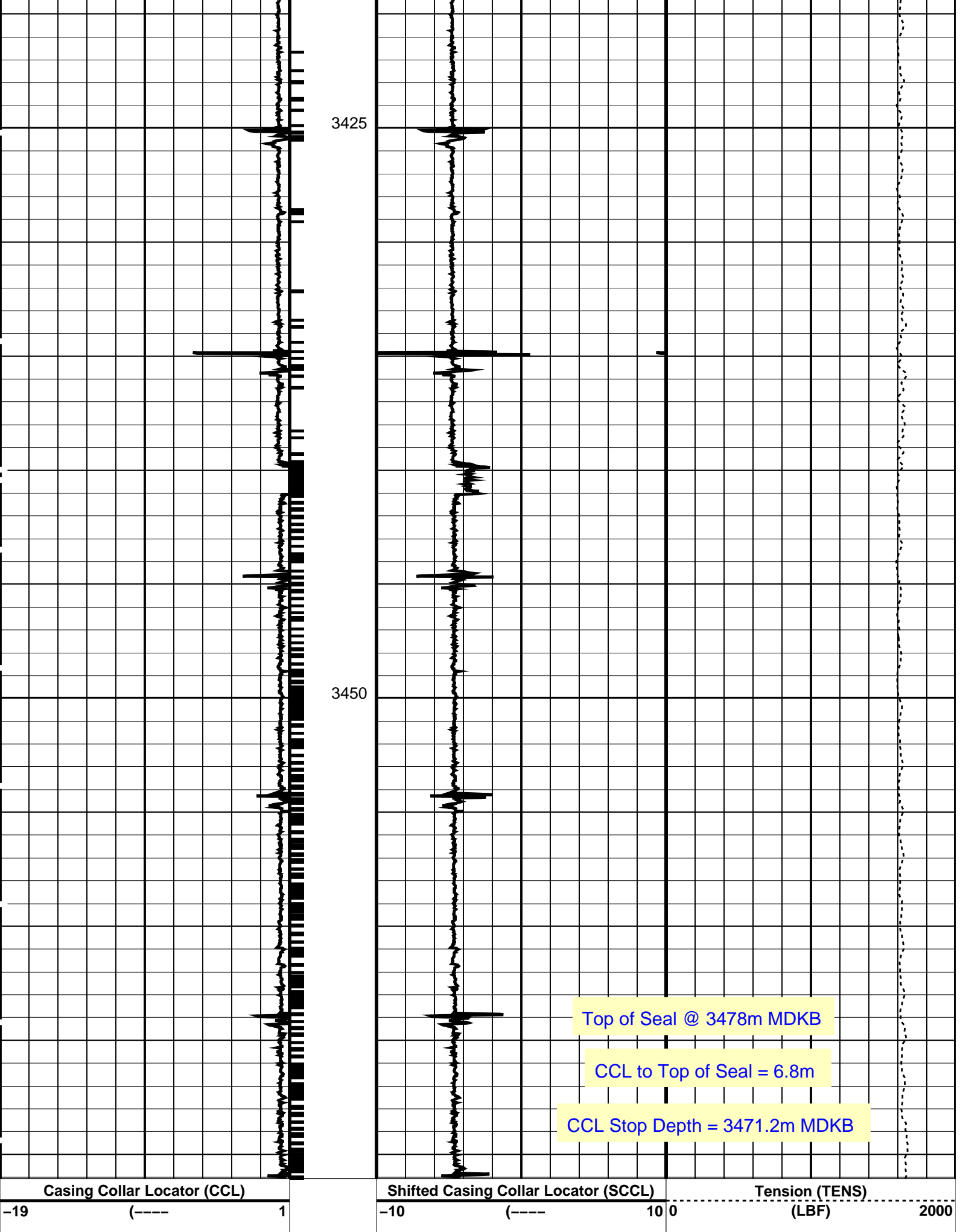
SHM_GUN 16C0-147 CCL-L 16C0-147

PIP SUMMARY

└─ Casing Collars

Time Mark Every 60 S





Parameters

DLIS Name	Description	Value
CCLD	CCL-PCCL: Casing Collar Locator	12 IN
CCLT	CCL reset delay	0.3 V
	CCL Detection Level	

Format: PERFO Vertical Scale: 1:200 Graphics File Created: 26-Feb-2009 08:39

OP System Version: 16C0-147

MCM

MPEX-AA	16C0-147	MPSU-BA	16C0-147
CCL-PCCL	16C0-147		

Output DLIS Files

DEFAULT MPBT_058LUP FN:57 PRODUCER 26-Feb-2009 08:39

Schlumberger

4.5" 12.6lb/ft Posiset Plug
Top of Seal @ 3478m MDKB

MAXIS Field Log

Output DLIS Files

DEFAULT MPBT_057LUP FN:56 PRODUCER 26-Feb-2009 08:20

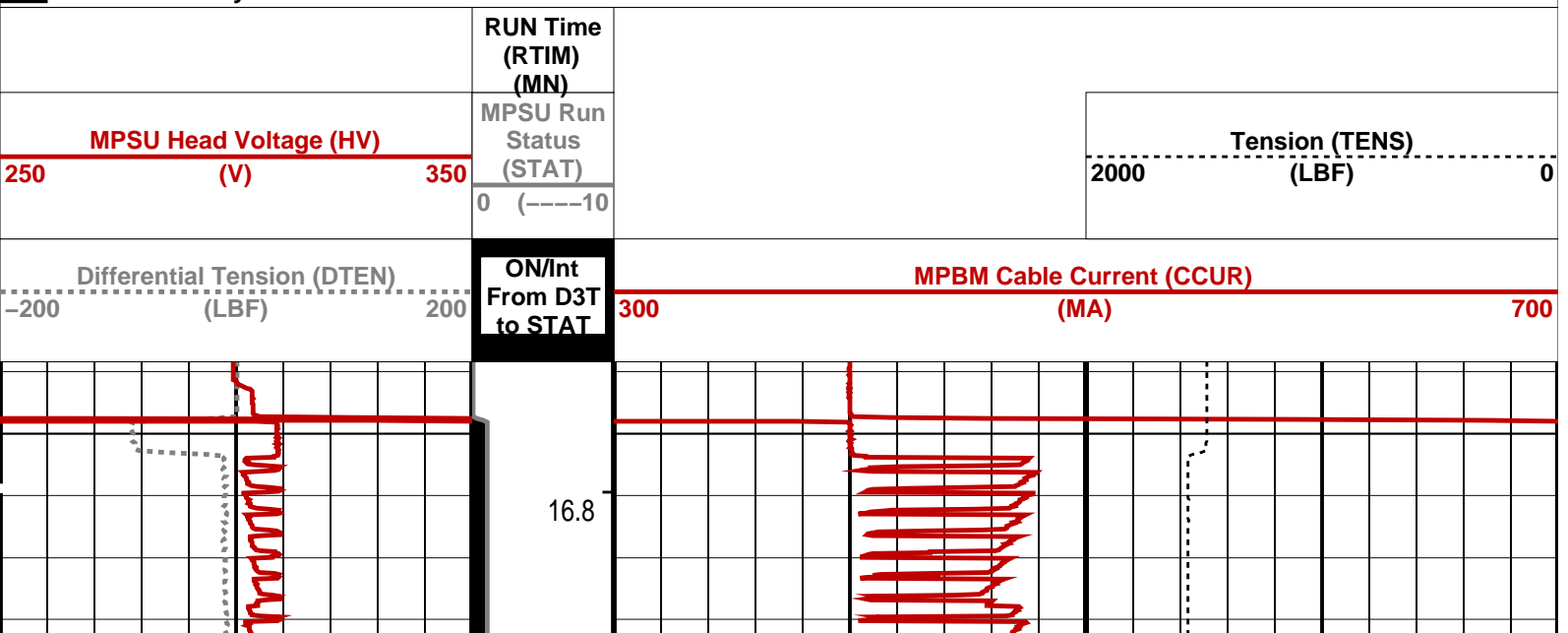
OP System Version: 16C0-147

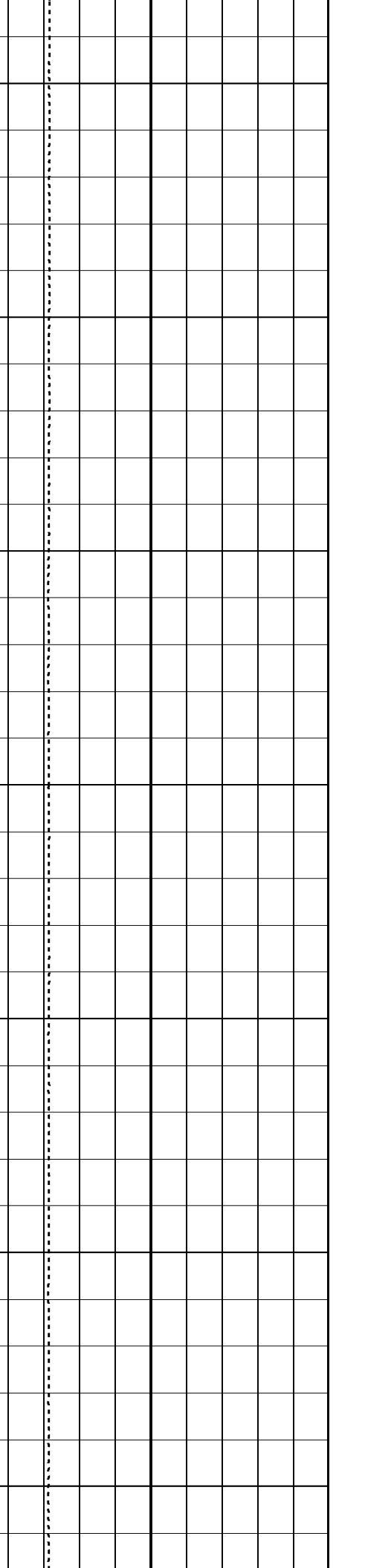
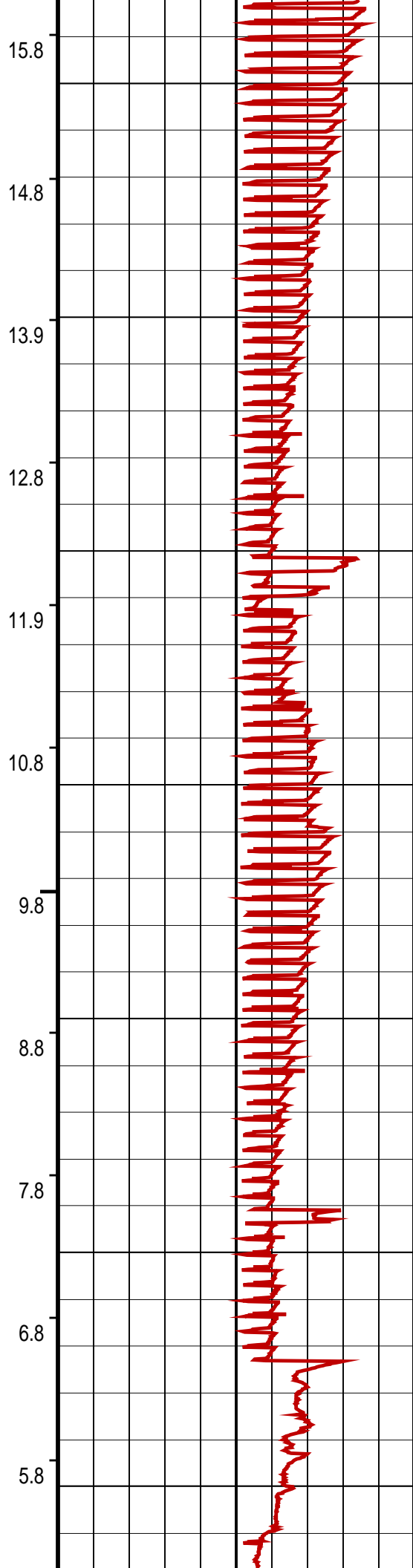
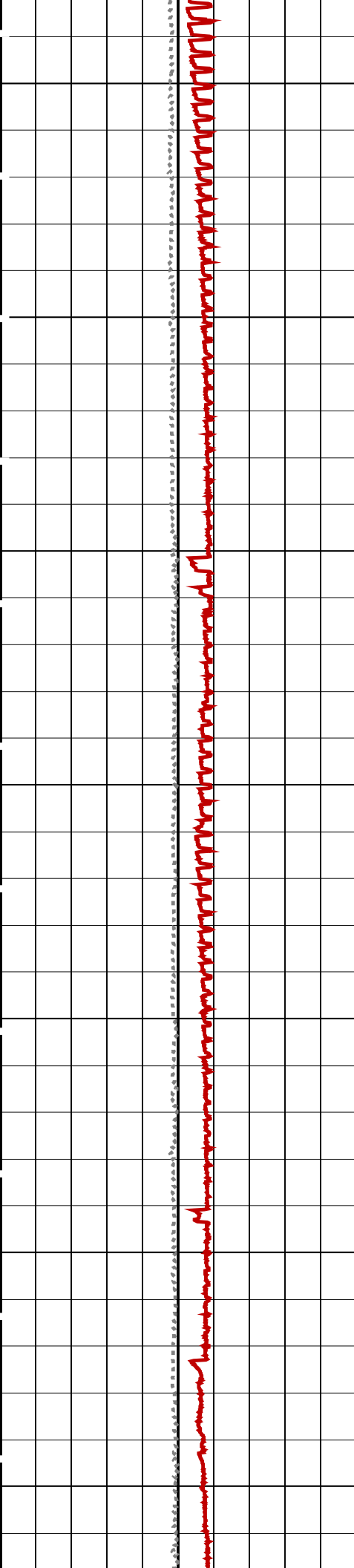
MCM

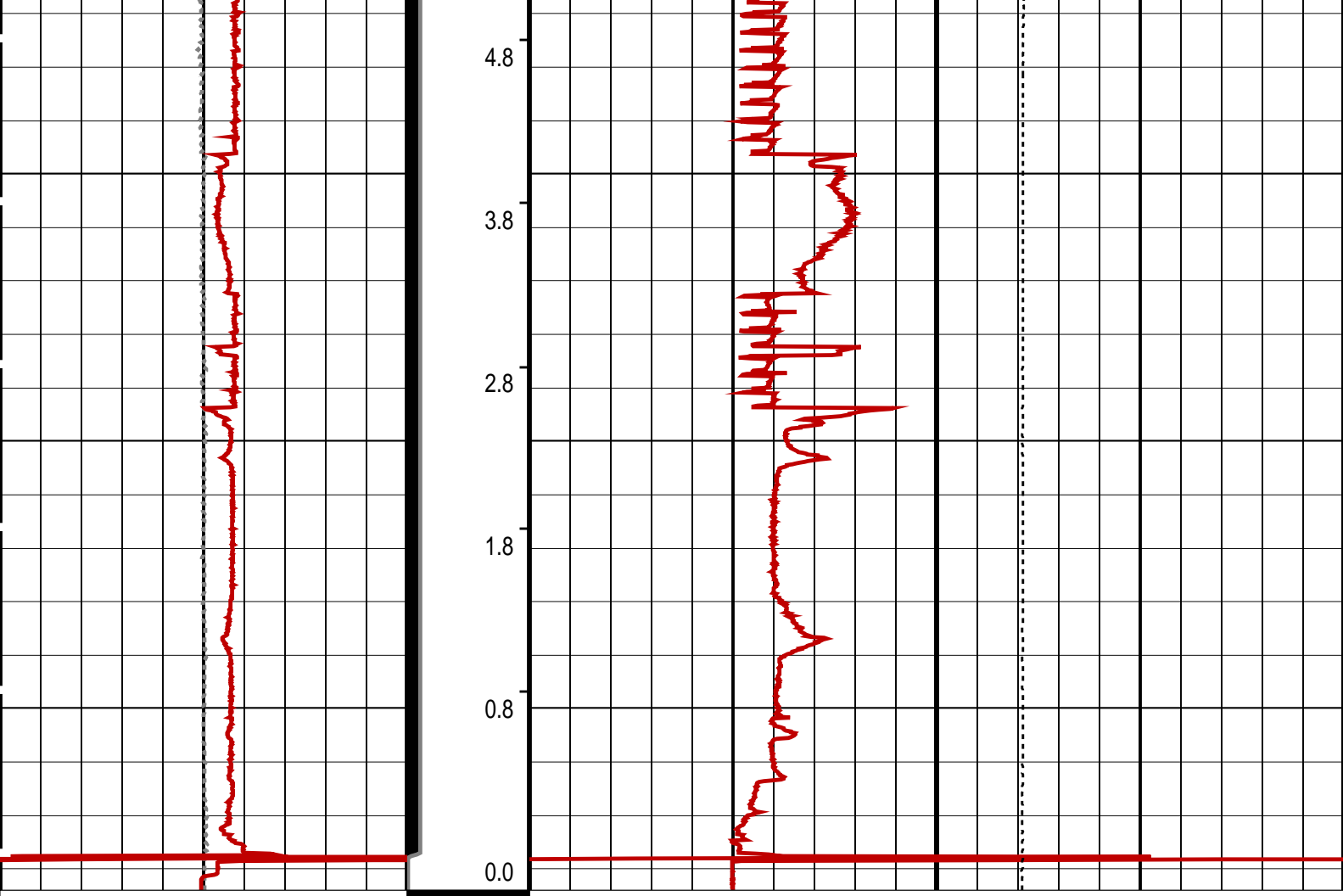
MPEX-AA	16C0-147	MPSU-BA	16C0-147
CCL-PCCL	16C0-147		

PIP SUMMARY

- MPSU Run Time Every 1 MN
- MPSU Run Time Every 10 MN







Differential Tension (DTEN) (LBF)	ON/Int From D3T to STAT	MPBM Cable Current (CCUR) (MA)
-200200		300700
MPSU Head Voltage (HV) (V)	MPSU Run Status (STAT)	Tension (TENS) (LBF)
250350	0 (----10	20000
	RUN Time (RTIM) (MN)	

PIP SUMMARY

- ↵ MPSU Run Time Every 1 MN
- MPSU Run Time Every 10 MN

Time Mark Every 60 S

Parameters

DLIS Name	Description	Value
MPSU-BA: MECHANICAL PLUGBACK SETTING UNIT IPUMP	Intensifier Pump	TRUE

Format: MPBT Vertical Scale: 1:600 Graphics File Created: 26-Feb-2009 08:20

OP System Version: 16C0-147 MCM

MPEX-AA CCL-PCCL	16C0-147 16C0-147	MPSU-BA 16C0-147
---------------------	----------------------	---------------------

Output DLIS Files

DEFAULT	MPBT_057LUP	FN:56	PRODUCER	26-Feb-2009 08:20
---------	-------------	-------	----------	-------------------



Plug Correlation Pass

MAXIS Field Log

Output DLIS Files

DEFAULT MPBT_056LUP FN:55 PRODUCER 26-Feb-2009 08:05 3500.2 M 3461.9 M

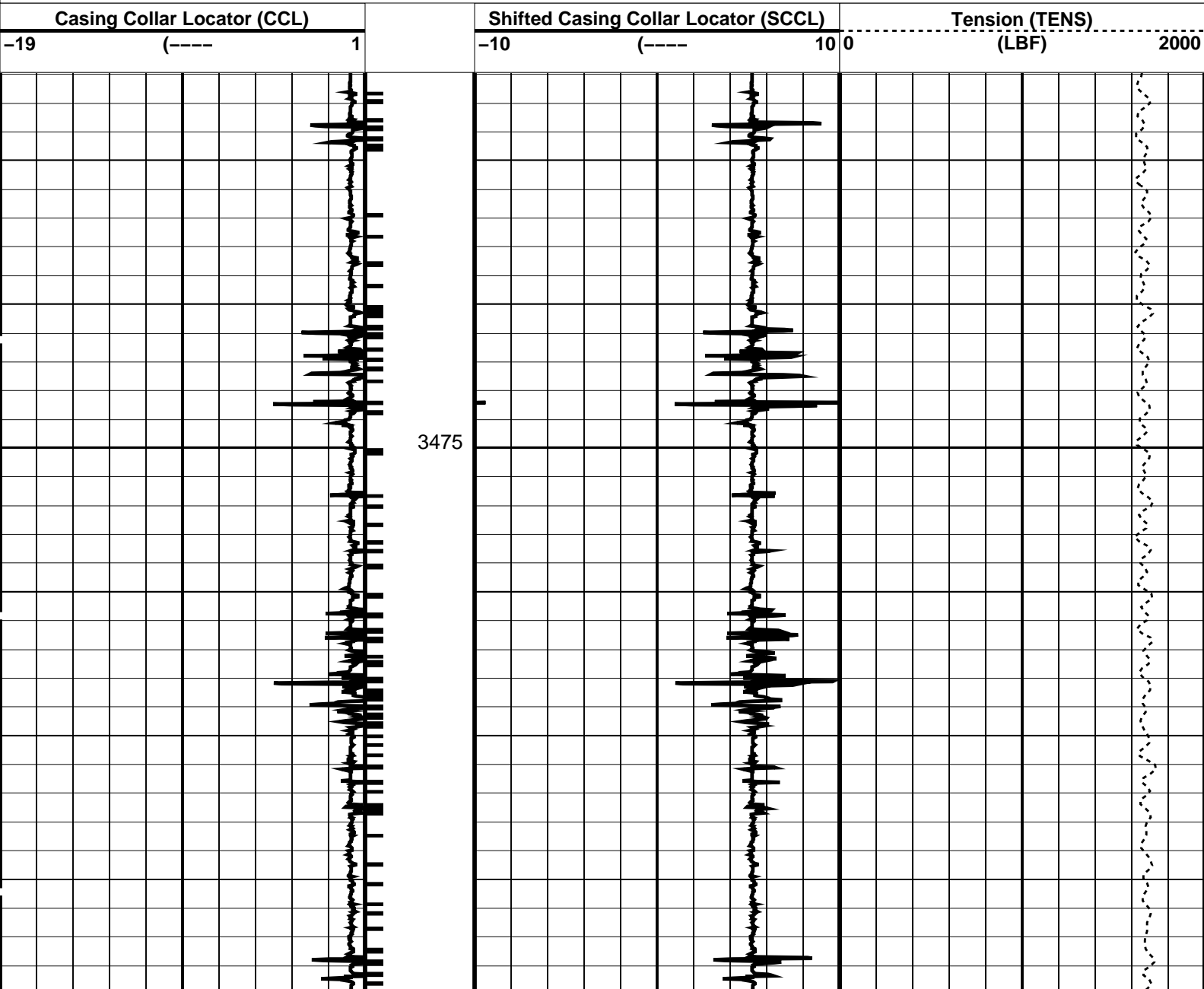
OP System Version: 16C0-147
MCM

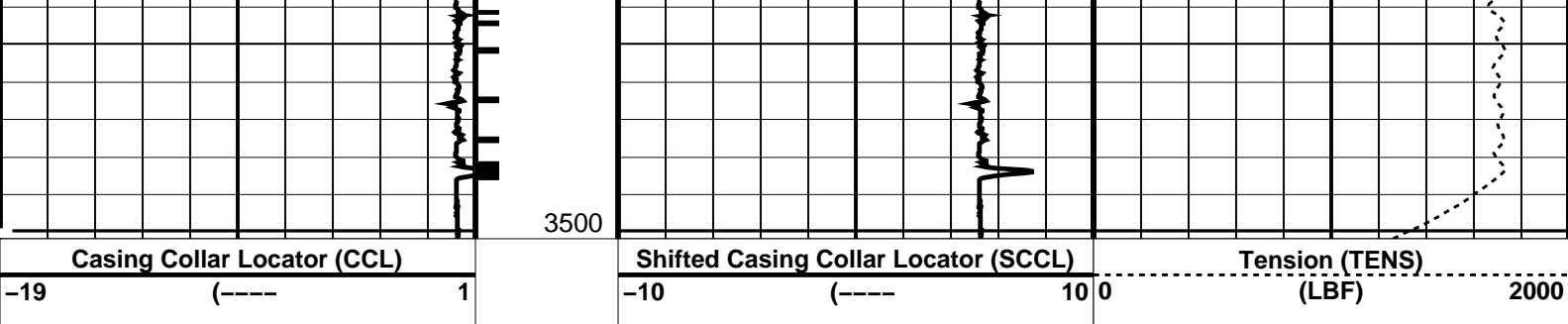
MPEX-AA 16C0-147 MPSU-BA 16C0-147
CCL-PCCL 16C0-147

PIP SUMMARY

└─ Casing Collars

Time Mark Every 60 S






PIP SUMMARY
Casing Collars
Time Mark Every 60 S

Parameters		
DLIS Name	Description	Value
CCLD	CCL-PCCL: Casing Collar Locator	12 IN
CCLT	CCL reset delay	0.3 V
	CCL Detection Level	
Format: PERFO Vertical Scale: 1:200		Graphics File Created: 26-Feb-2009 08:05

OP System Version: 16C0-147			
MCM			
MPEX-AA	16C0-147	MPSU-BA	16C0-147
CCL-PCCL	16C0-147		

Output DLIS Files			
DEFAULT	MPBT_056LUP	FN:55	PRODUCER 26-Feb-2009 08:05



Dummy Plug Pass

MAXIS Field Log

Company: Esso Australia Pty Ltd. Well: A-27a

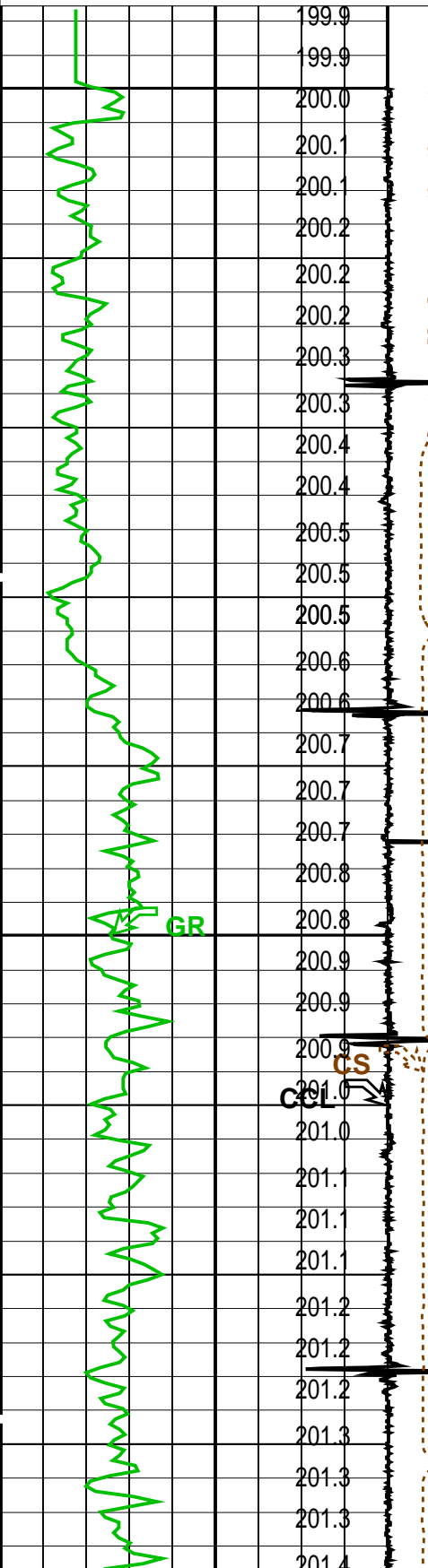
Input DLIS Files						
DEFAULT	PERFO_036LUP	FN:35	PRODUCER	25-Feb-2009 14:48	3537.2 M	2326.5 M
Output DLIS Files						
DEFAULT	PERFO_038PUP	FN:37	PRODUCER	25-Feb-2009 15:29	3538.1 M	3297.5 M

OP System Version: 16C0-147			
MCM			
MWPT-CA	16C0-147	MWGT-AA	16C0-147

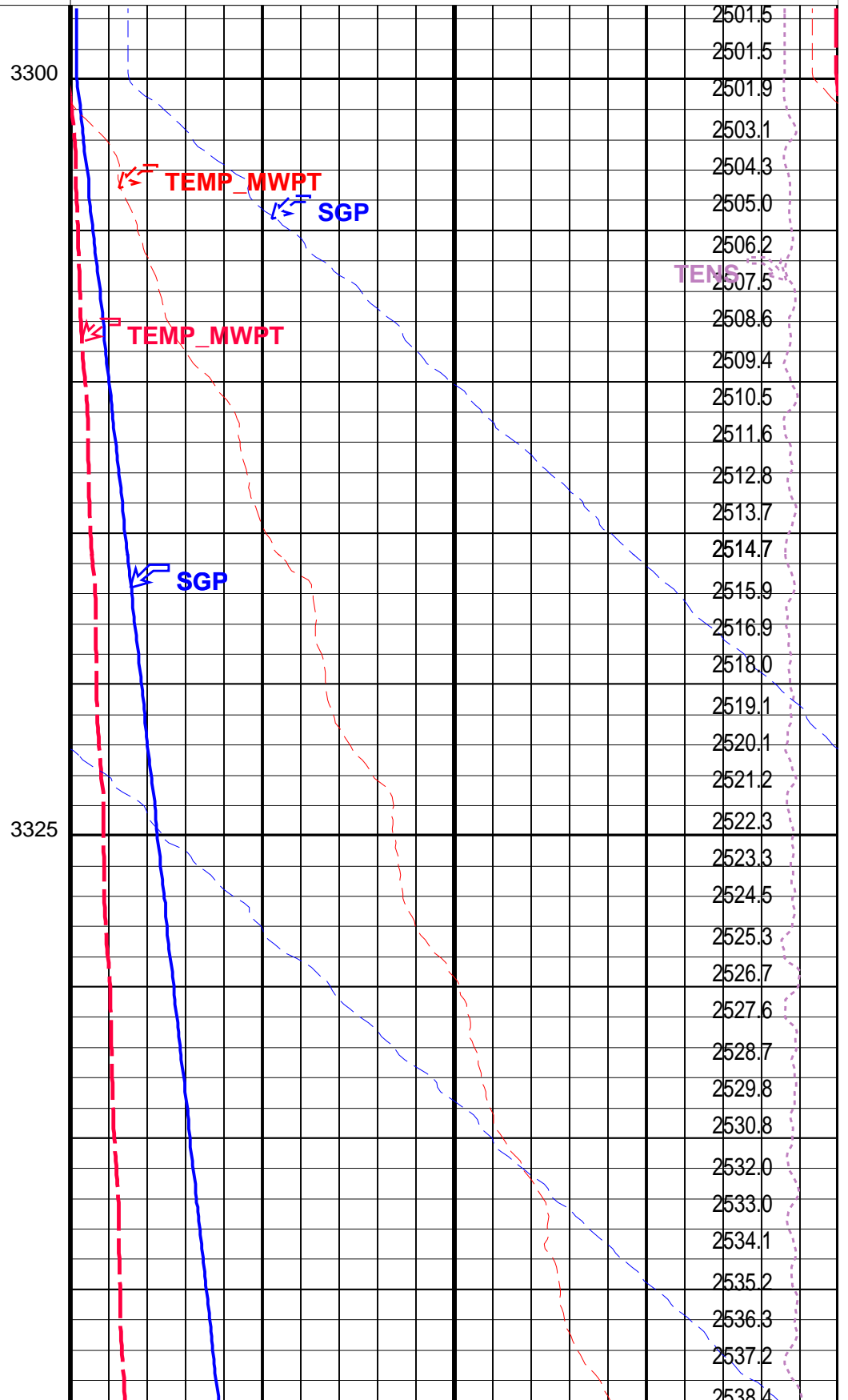
PIP SUMMARY
Time Mark Every 60 S

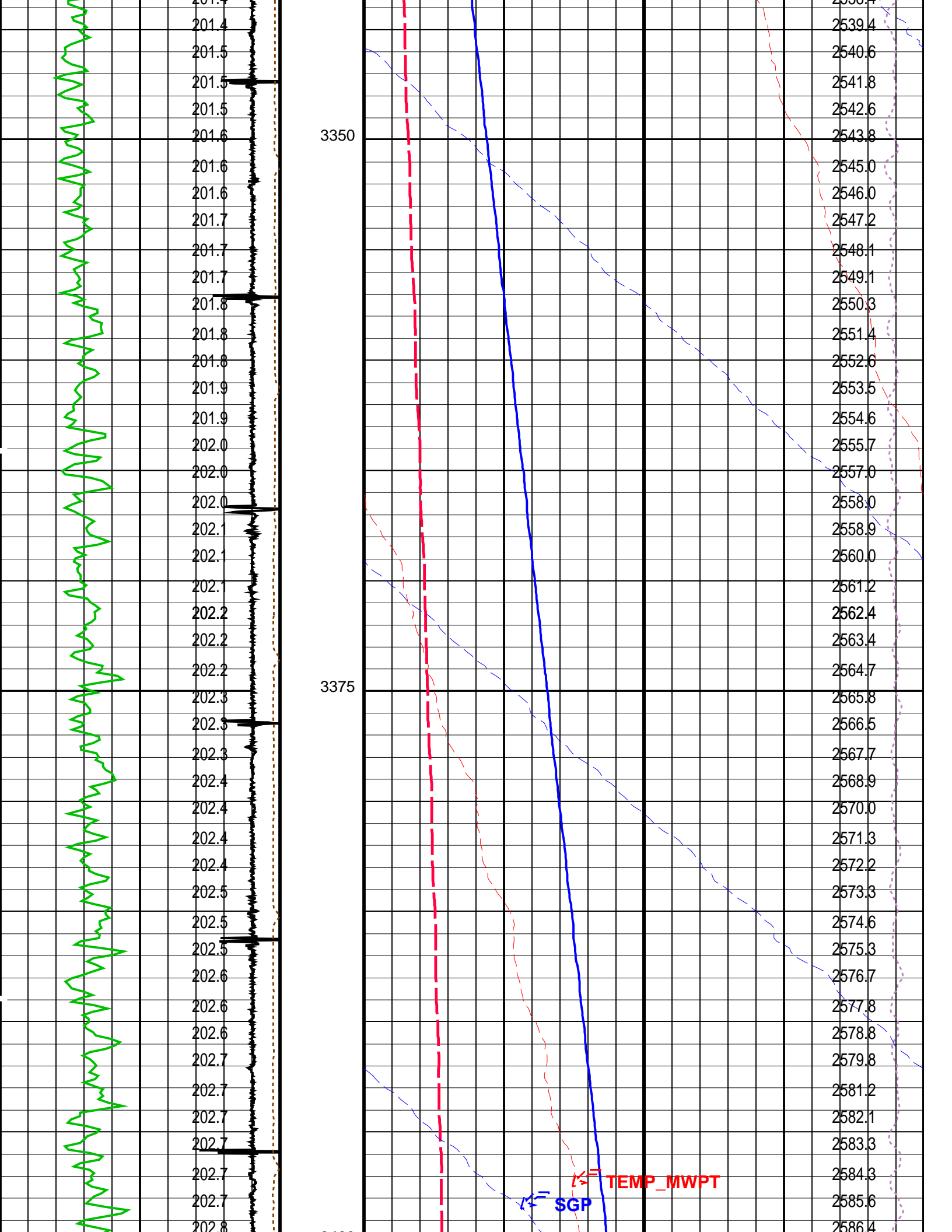


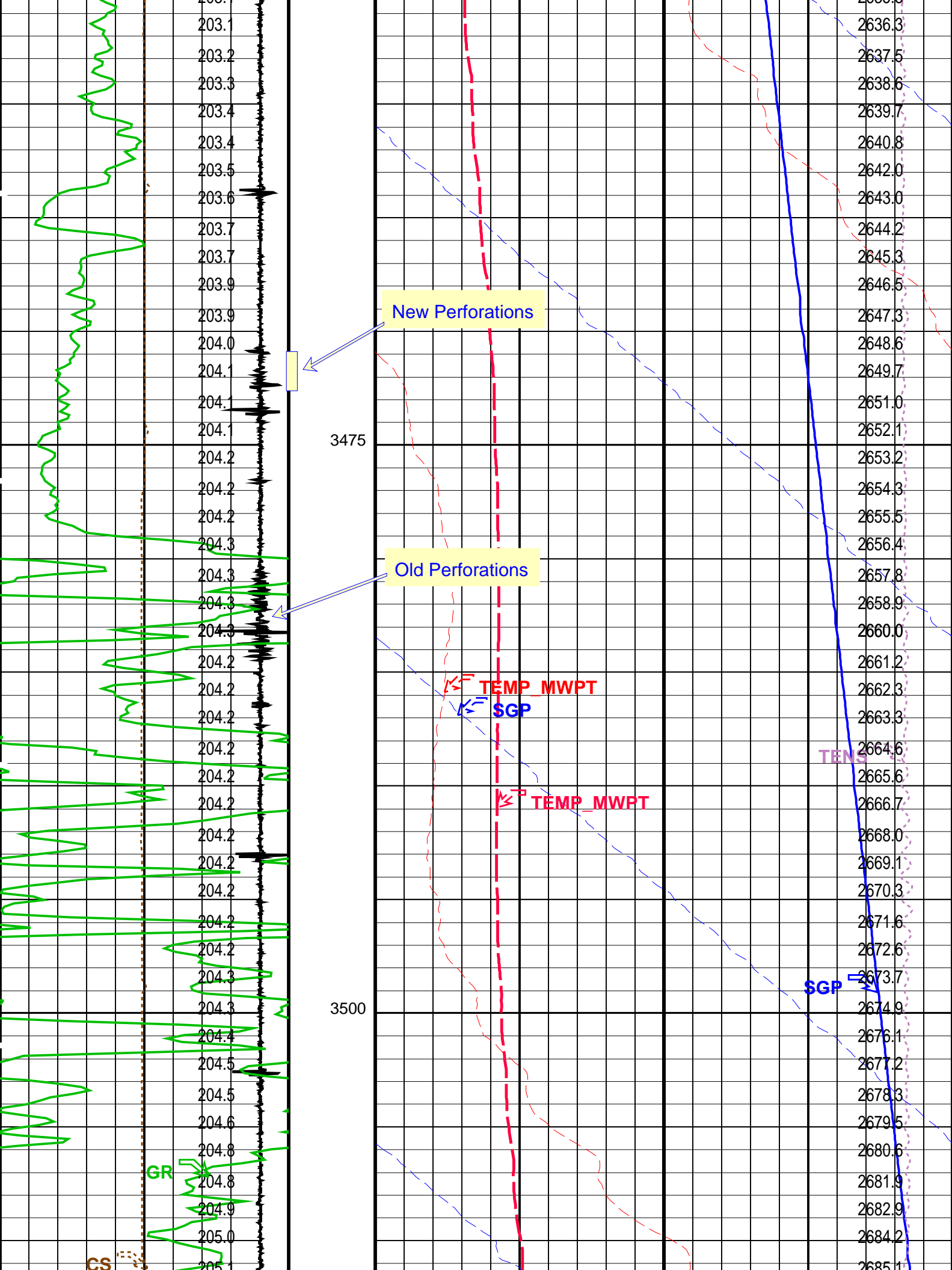
CCL From CCL to T1		
Gamma Ray (GR)		
0	(GAPI)	150
Casing Collar Locator (CCL)		
-19	(----	1
Cable Speed (CS)		
0	(F/HR)	5000

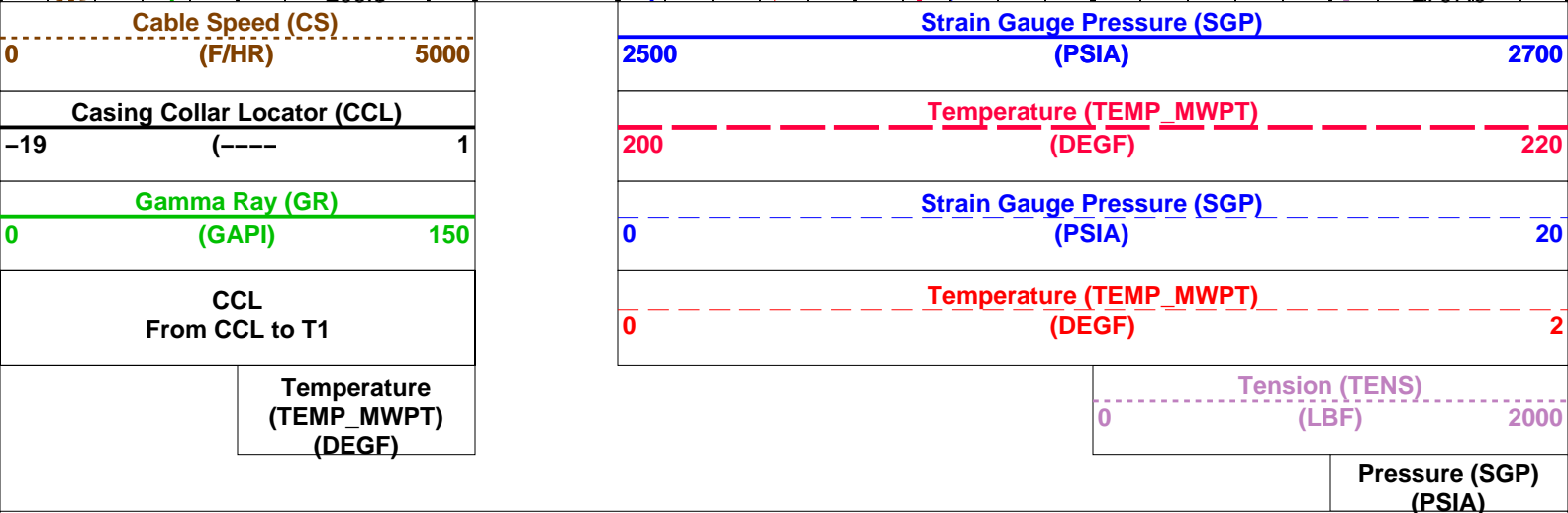


Temperature (TEMP_MWPT) (DEGF)		
0		2
Strain Gauge Pressure (SGP) (PSIA)		
0		20
Temperature (TEMP_MWPT) (DEGF)		
200		220
Strain Gauge Pressure (SGP) (PSIA)		
2500		2700









Parameters			
DLIS Name	Description	Value	
MWPT-CA: MEASUREMENT WHILE PERFORATING TOOL			
DEVI_FL_CORR	Deviation Angle for Flow Line Correction	0	DEG
FLD	Flow Line Density	1	G/C3
MWPT_NULL_SOURCE	MWPT NULL Temperature Source	TEMS	
MWPT_NULL_TEMP	MWPT NULL Temperature	0.0	DEGC
System and Miscellaneous			
DO	Depth Offset for Playback	0.9	M
PP	Playback Processing	NORMAL	

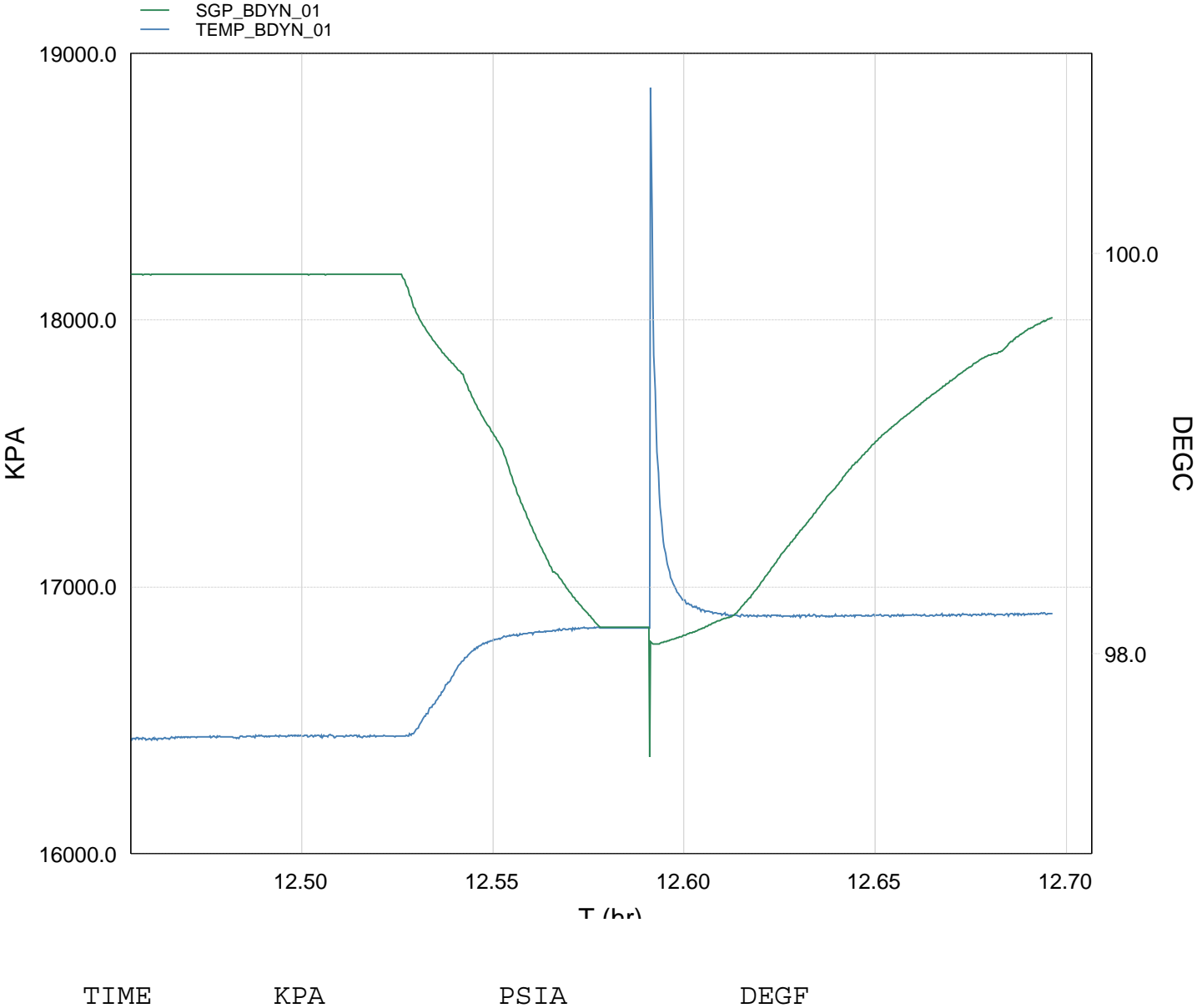
OP System Version: 16C0-147
MCM

MWPT-CA	16C0-147	MWGT-AA	16C0-147
Input DLIS Files			
DEFAULT	PERFO_036LUP	FN:35	PRODUCER 25-Feb-2009 14:48 3537.2 M 2326.5 M
Output DLIS Files			
DEFAULT	PERFO_038PUP	FN:37	PRODUCER 25-Feb-2009 15:29



GUN # 1 Fired @
3471m to 3472.5m MDKB

MAXIS Field Log



4350.0	18171.6892	2635.5850	207.6610	
4380.0	18171.2938	2635.5276	207.6621	
4410.0	18171.3938	2635.5421	207.6589	DRAW DOWN
4440.0	18053.4761	2618.4396	207.6776	
4470.0	17865.3116	2591.1486	208.1061	
4500.0	17674.1633	2563.4249	208.4514	
4530.0	17439.4395	2529.3811	208.5605	
4560.0	17148.4148	2487.1715	208.5944	
4590.0	16963.8176	2460.3980	208.6241	
4620.0	16849.3267	2443.7925	208.6267	
4650.0	16849.3267	2443.7925	208.6267	
4680.0	16797.9153	2436.3359	209.1608	FIRED
4710.0	16841.1714	2442.6097	208.7861	
4740.0	16889.8498	2449.6699	208.7445	
4770.0	17030.2089	2470.0272	208.7336	
4800.0	17190.5524	2493.2831	208.7426	
4830.0	17341.6248	2515.1943	208.7341	
4860.0	17481.0169	2535.4114	208.7469	
4890.0	17597.4426	2552.2975	208.7461	
4920.0	17694.3807	2566.3572	208.7452	
4950.0	17785.5557	2579.5810	208.7472	
4980.0	17865.3116	2591.1486	208.7517	
5010.0	17941.3047	2602.1705	208.7550	
5040.0	18007.5901	2611.7844	208.7552	

Schlumberger

Gun Shooting Pass

MAXIS Field Log

Company: Esso Australia Pty Ltd. Well: A-27a

Output DLIS Files

DEFAULT PERFO_030LUP FN:29 PRODUCER 25-Feb-2009 12:12 3477.3 M 3445.0 M

OP System Version: 16C0-147
MCM

MWP_GUN 16C0-147 MWPT-CA 16C0-147
MWGT-AA 16C0-147

PIP SUMMARY

Time Mark Every 60 S


		Pressure (SGP) (PSIA)	
Temperature (TEMP_MWPT) (DEGF)		Tension (TENS) (LBF)	
		0	2000
CCL From CCL to T1		Temperature (TEMP_MWPT) (DEGF)	
		0	2
Gamma Ray (GR) (GAPI)		Strain Gauge Pressure (SGP) (PSIA)	
0		0	20
Casing Collar Locator (CCL)		Temperature (TEMP_MWPT)	

MWPT-CA: MEASUREMENT WHILE PERFORATING TOOL		0	DEG
DEVI_FL_CORR	Deviation Angle for Flow Line Correction	1	G/C3
FLD	Flow Line Density	TEMS	
MWPT_NULL_SOURCE	MWPT NULL Temperature Source	0.0	DEGC
MWPT_NULL_TEMP	MWPT NULL Temperature		

Format: MWP	Vertical Scale: 1:200	Graphics File Created: 25-Feb-2009 12:12
-------------	-----------------------	--

OP System Version: 16C0-147			
MCM			
MWP_GUN	16C0-147	MWPT-CA	16C0-147
MWGT-AA	16C0-147		

Output DLIS Files			
DEFAULT	PERFO_030LUP	FN:29	PRODUCER 25-Feb-2009 12:12



Gun Correlation Pass

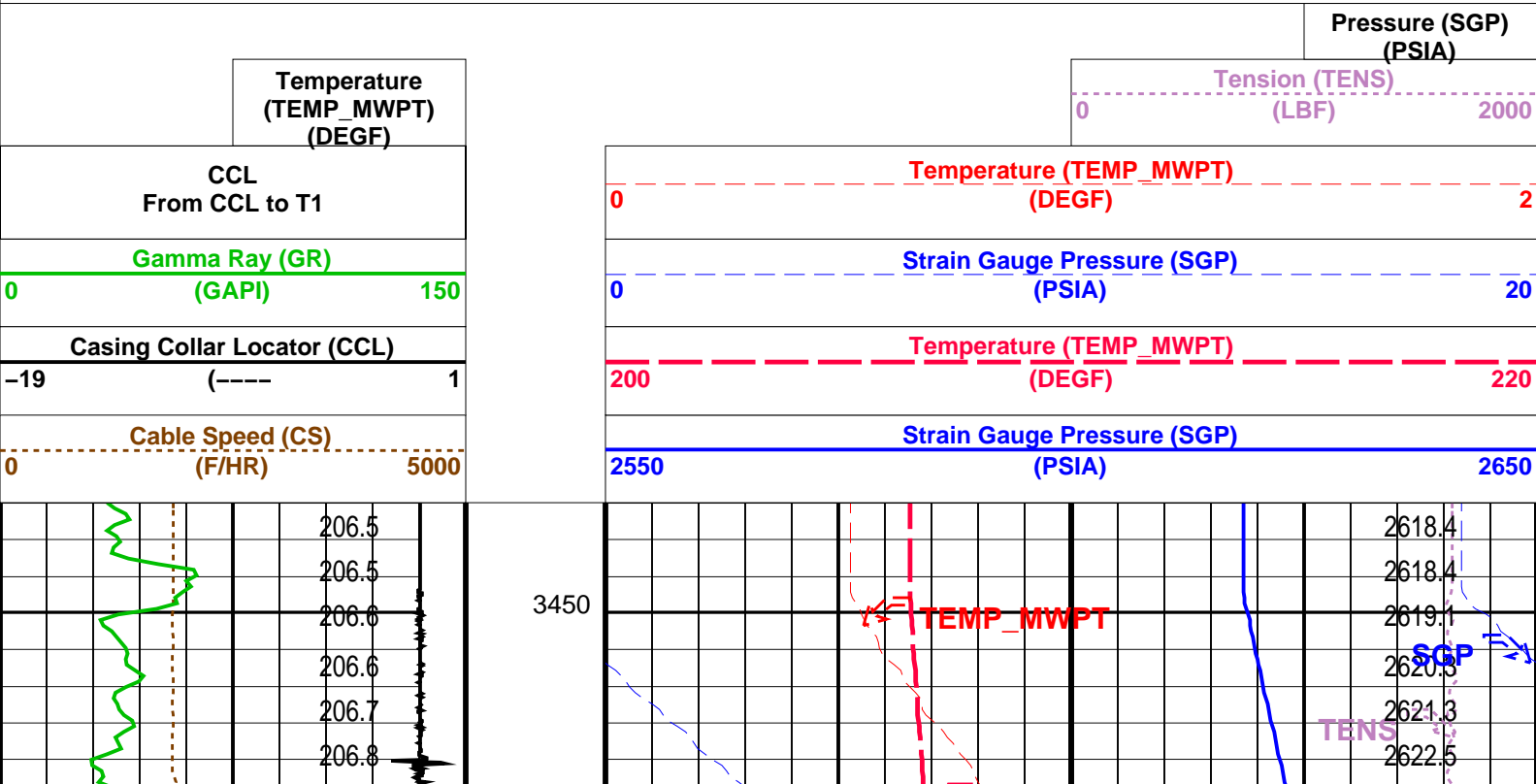
MAXIS Field Log

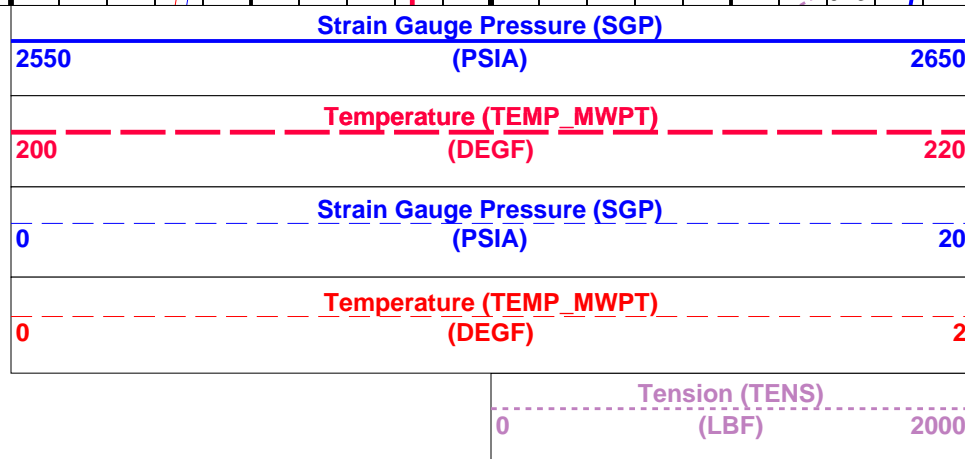
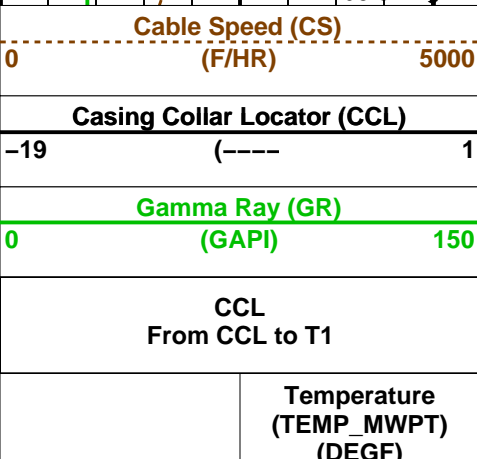
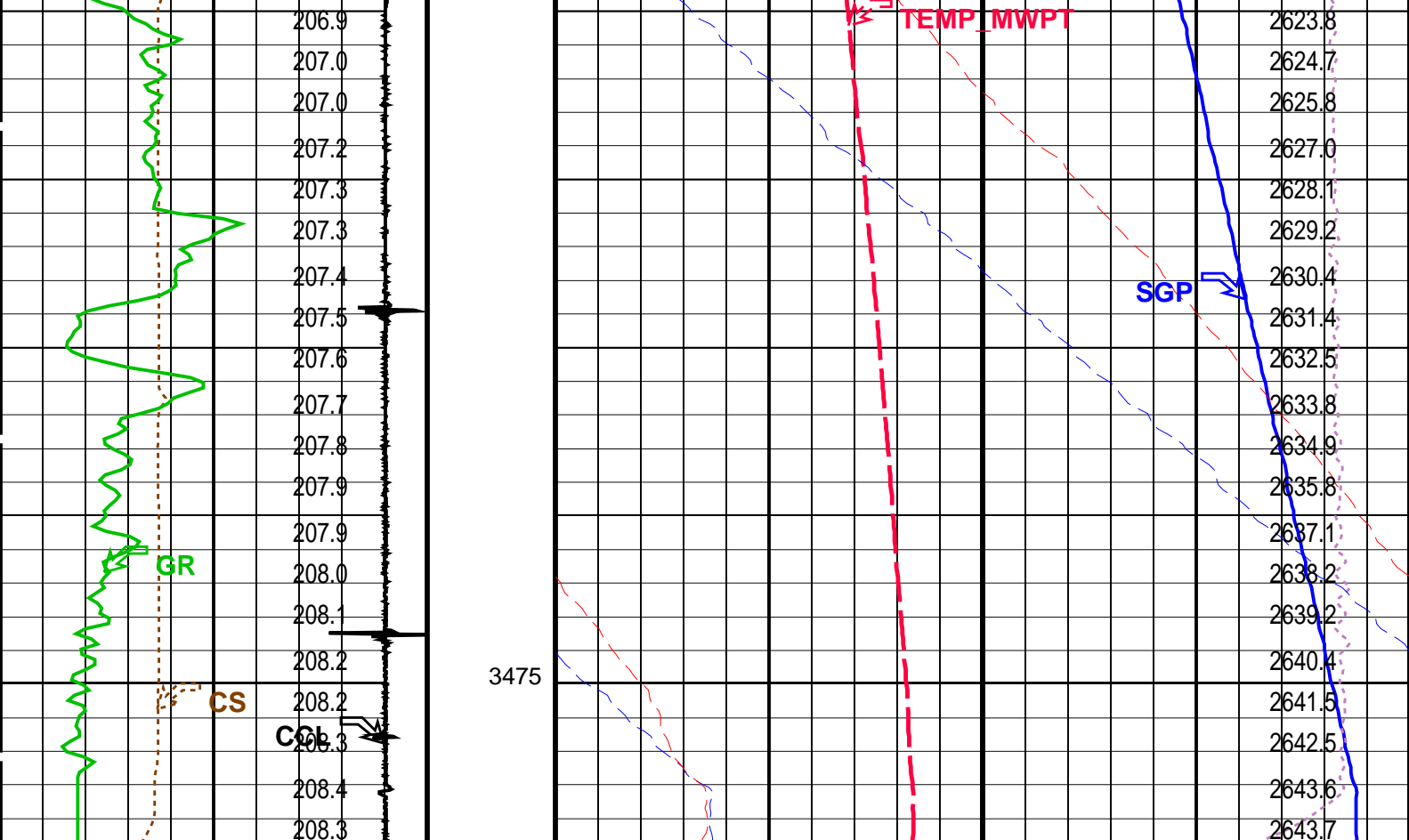
Company: Esso Australia Pty Ltd.	Well: A-27a
----------------------------------	-------------

Output DLIS Files			
DEFAULT	PERFO_029LUP	FN:28	PRODUCER 25-Feb-2009 12:06 3479.7 M 3447.0 M
OP System Version: 16C0-147			
MCM			
MWP_GUN	16C0-147	MWPT-CA	16C0-147
MWGT-AA	16C0-147		

PIP SUMMARY

Time Mark Every 60 S





PIP SUMMARY

Time Mark Every 60 S

Parameters

DLIS Name	Description	Value
MWPT-CA: MEASUREMENT WHILE PERFORATING TOOL		
DEVI_FL_CORR	Deviation Angle for Flow Line Correction	0 DEG
FLD	Flow Line Density	1 G/C3
MWPT_NULL_SOURCE	MWPT NULL Temperature Source	TEMS
MWPT_NULL_TEMP	MWPT NULL Temperature	0.0 DEGC

Format: MWP Vertical Scale: 1:200

Graphics File Created: 25-Feb-2009 12:06

OP System Version: 16C0-147
MCM

MWP_GUN 16C0-147 MWPT-CA 16C0-147
MWGT-AA 16C0-147

Output DLIS Files

Schlumberger

SIGMA Pass # 2

MAXIS Field Log

Company: Esso Australia Pty Ltd.

Well: A-27a

Output DLIS Files

DEFAULT

RST_PSP_016LUP

FN:15

PRODUCER

24-Feb-2009 12:15

OP System Version: 16C0-147
MCM

RST-C

SRPC-3624-Q2_2008_OP16_b

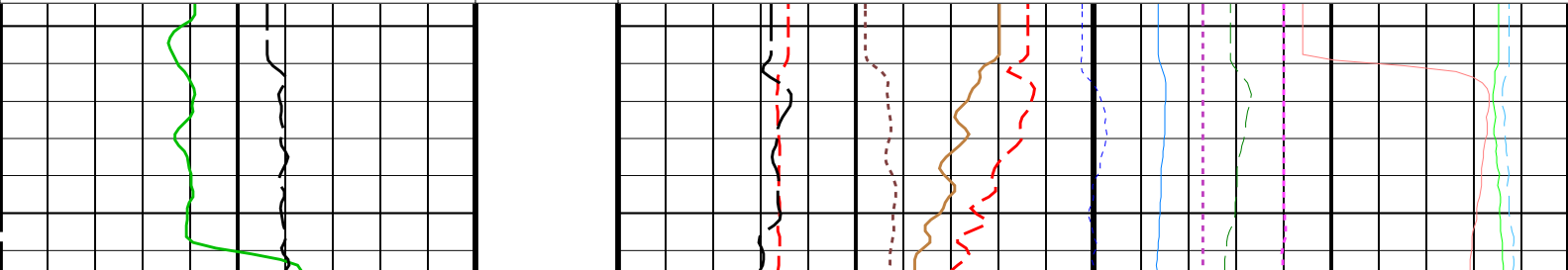
PSPT-B

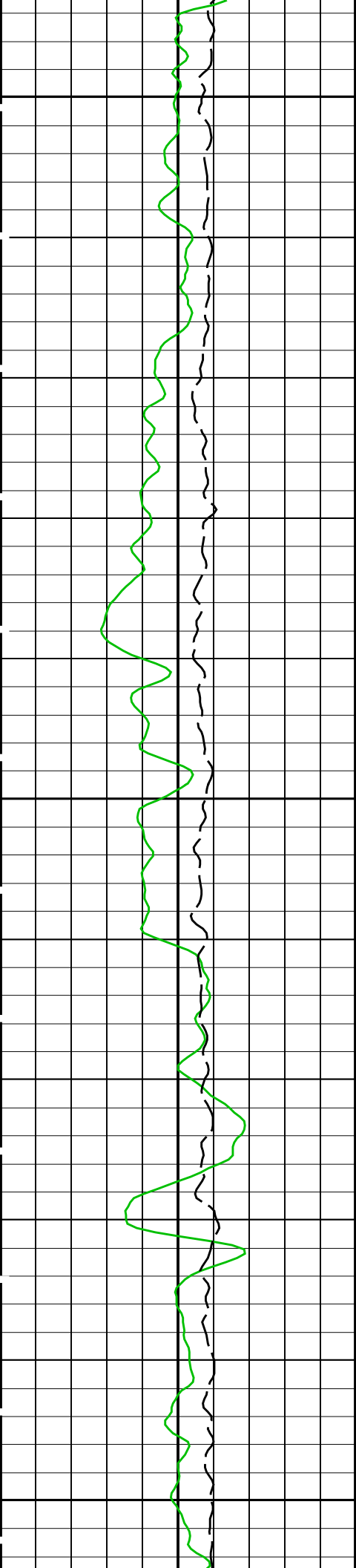
SRPC-3624-Q2_2008_OP16_b

PIP SUMMARY

Time Mark Every 60 S

		Tension (TENS) 0 (LBF) 2000	
		Tot Sel CR Far (TSCF_FIL) 0 (CPS) 12000	
		Tot Sel CR Near (TSCN_FIL) 0 (CPS) 30000	
		RST Sigma Unc (SIGM_SIG) 3 (CU) 0	
RST Capture Ratio (TRAT_FIL) 1.5 (----) 0.5		RST Far Effective Capture CR (RSCF_RST) 45 (----) 0	
		Sigma Formation Far Apparent (SFFA_FIL) 60 (CU) 0	
		Sigma Formation Near Apparent (SFNA_FIL) 60 (CU) 0	
RST Inelastic Ratio (IRAT_FIL) 0 (----) 0.75		RST Near Effective Capture CR (RSCN_RST) 45 (----) 0	
MCS Far Background (filtered) (FBAC) 0 (CPS) 10000		Cable Speed (CS) 0 (F/HR) 2000	
RST Sigma Difference (DSIG) -30 (CU) 30			
Sigma Borehole Near Apparent (SBNA_FIL) 150 (CU) 0			
Gamma Ray (GR) 0 (GAPI) 150			

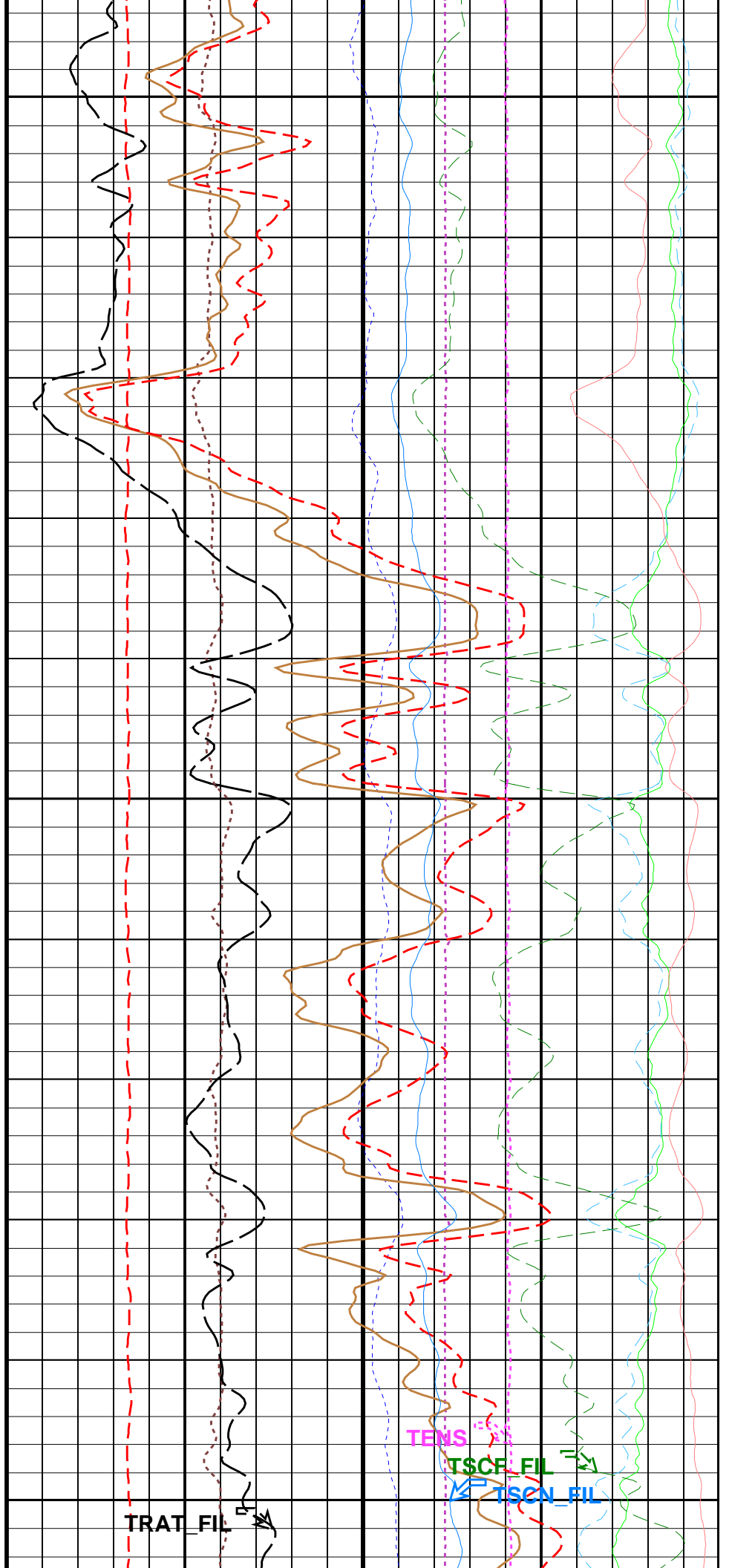




3425

3450

3475

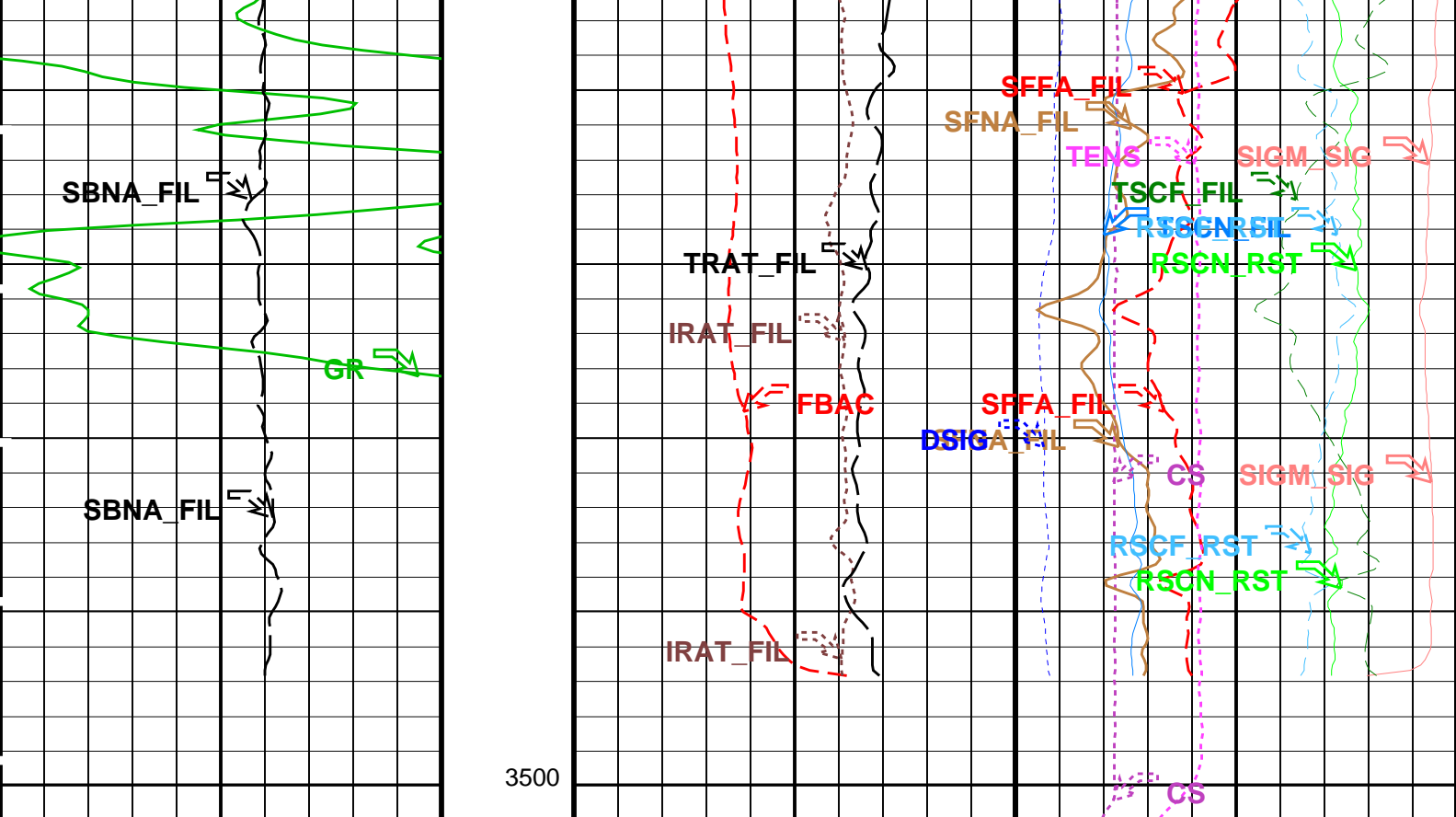


TRAT_FIL

TENS

TSCF_FIL

TSCN_FIL



Gamma Ray (GR) (GAPI)		
0		150
Sigma Borehole Near Apparent (SBNA_FIL) (CU)		
150		0

RST Sigma Difference (DSIG) (CU)		
-30		30
MCS Far Background (filtered) (FBAC) (CPS)		Cable Speed (CS) (F/HR)
0	10000	0 2000
RST Inelastic Ratio (IRAT_FIL) (----		RST Near Effective Capture CR (RSCN_RST) (----
0	0.75	45 0
Sigma Formation Near Apparent (SFNA_FIL) (CU)		
60		0
Sigma Formation Far Apparent (SFFA_FIL) (CU)		
60		0
RST Capture Ratio (TRAT_FIL) (----		RST Far Effective Capture CR (RSCF_RST) (----
1.5	0.5	45 0
RST Sigma Unc (SIGM_SIG) (CU)		
3		0
Tot Sel CR Near (TSCN_FIL) (CPS)		
0		30000
Tot Sel CR Far (TSCF_FIL) (CPS)		
0		12000
Tension (TENS) (LBF)		0 2000

PIP SUMMARY

Time Mark Every 60 S

Parameters


DLIS Name	Description	Value
RST-C: Reservoir Saturation Pro Tool C		
APP	RST Air Borehole	No

AIRB	RST Air Borehole	NO	
BHS	Borehole Status	CASED	
BSALOPT	RST Borehole Salinity Option	Unknown	
BSFL	RST Borehole Salinity Filter Length	51	
DFPC	RST Depth Filter Processing Constant	One	
DFPC_TDTL	RST Depth Filter Processing Constant (TDT-like)	Two	
MATR	Rock Matrix for Neutron Porosity Corrections	SANDSTONE	
NORM_IRAT_RST	RST Normalized Inelastic Ratio	0.48	
NORM_SIGM_RST	RST Normalized Sigma	30	CU
RGAI	Near/Far Gain Calibration Ratio	1	
TIER_SIGM	RST Sigma Acquisition Mode	0_RST_Sigma	
PSPT-B: Production Services Logging Platform			
BHS	Borehole Status	CASED	
MATR	Rock Matrix for Neutron Porosity Corrections	SANDSTONE	
System and Miscellaneous			
BS	Bit Size	8.000	IN
BSAL	Borehole Salinity	-50000.00	PPM
CSIZ	Current Casing Size	4.500	IN
CWEI	Casing Weight	38.60	LB/F

Format: RST_SIG_QUALITY
Vertical Scale: 1:200
Graphics File Created: 24-Feb-2009 12:15

OP System Version: 16C0-147			
MCM			
RST-C	SRPC-3624-Q2_2008_OP16_b	PSPT-B	SRPC-3624-Q2_2008_OP16_b

Output DLIS Files			
DEFAULT	RST_PSP_016LUP	FN:15	PRODUCER 24-Feb-2009 12:15



SIGMA Pass # 1

MAXIS Field Log

Company: Esso Australia Pty Ltd.
Well: A-27a

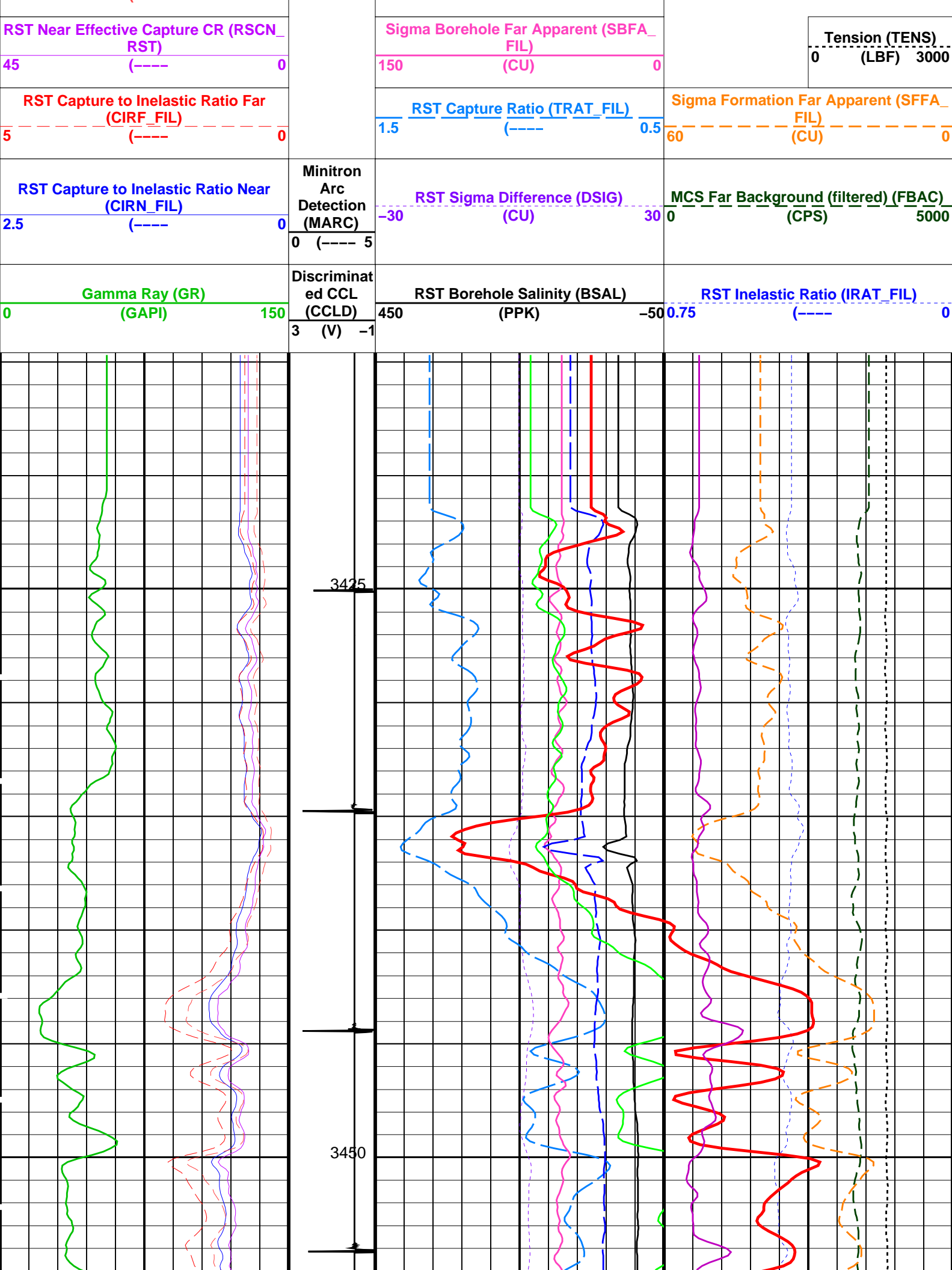
Input DLIS Files					
DEFAULT	RST_PSP_013LUP	FN:12	PRODUCER	24-Feb-2009 11:53	3507.8 M 3420.0 M
Output DLIS Files					
DEFAULT	RST_PSP_015PUP	FN:14	PRODUCER	24-Feb-2009 12:13	3507.8 M 3414.5 M

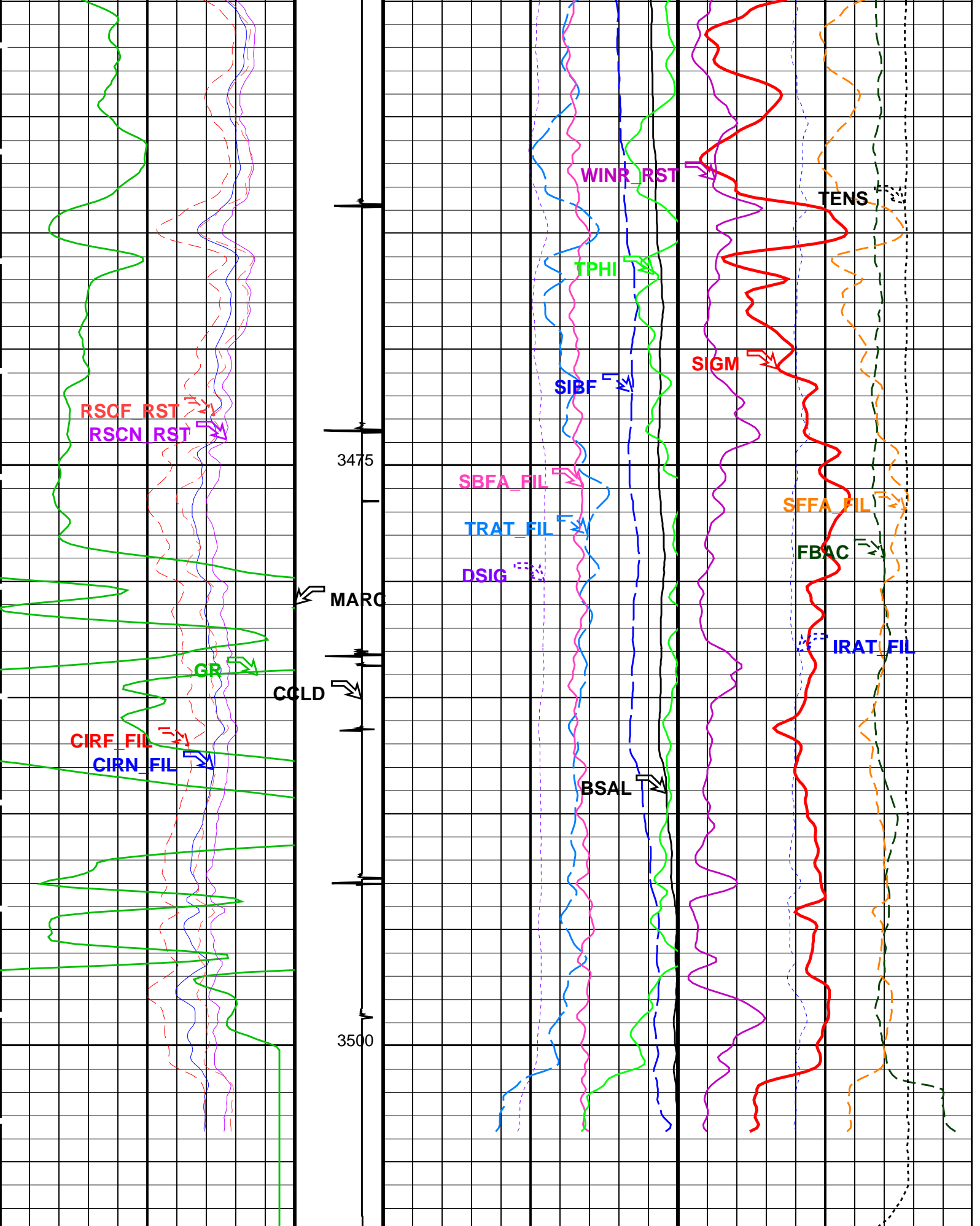
OP System Version: 16C0-147			
MCM			
RST-C	SRPC-3624-Q2_2008_OP16_b	PSPT-B	SRPC-3624-Q2_2008_OP16_b

PIP SUMMARY

Time Mark Every 60 S

	RST Sigma (SIGM)	
	60	(CU) 0
	RST Weighted Inelastic Ratio (WINR_RST)	
	0.4	(----) -0.4
	RST Porosity (TPHI)	
RST Far Effective Capture CR (RSCF_RST)	0.6	(V/V) 0
	RST Sigma Borehole Fluid (SIBF)	
	100	(CU) 0
45	(----)	0





Gamma Ray (GR) (GAPI)	Discriminated CCL (CCLD)	RST Borehole Salinity (BSAL)	RST Inelastic Ratio (IRAT_FIL)
0	3	450	0.75
150	-1	-50	0

<div> <div>RST Capture to Inelastic Ratio Near (CIRN_FIL)</div> <div>2.5 (----) 0</div> </div>	<div> <div>Minitron Arc Detection (MARC)</div> <div>0 (---- 5</div> </div>	<div> <div>RST Sigma Difference (DSIG)</div> <div>-30 (CU) 30</div> </div>	<div> <div>MCS Far Background (filtered) (FBAC)</div> <div>0 (CPS) 5000</div> </div>
<div> <div>RST Capture to Inelastic Ratio Far (CIRF_FIL)</div> <div>5 (----) 0</div> </div>		<div> <div>RST Capture Ratio (TRAT_FIL)</div> <div>1.5 (----) 0.5</div> </div>	<div> <div>Sigma Formation Far Apparent (SFFA_FIL)</div> <div>60 (CU) 0</div> </div>
<div> <div>RST Near Effective Capture CR (RSCN_RST)</div> <div>45 (----) 0</div> </div>		<div> <div>Sigma Borehole Far Apparent (SBFA_FIL)</div> <div>150 (CU) 0</div> </div>	<div> <div>Tension (TENS)</div> <div>0 (LBF) 3000</div> </div>
<div> <div>RST Far Effective Capture CR (RSCF_RST)</div> <div>45 (----) 0</div> </div>		<div> <div>RST Sigma Borehole Fluid (SIBF)</div> <div>100 (CU) 0</div> </div>	
		<div> <div>RST Porosity (TPHI)</div> <div>0.6 (V/V) 0</div> </div>	
		<div> <div>RST Weighted Inelastic Ratio (WINR_RST)</div> <div>0.4 (----) -0.4</div> </div>	
		<div> <div>RST Sigma (SIGM)</div> <div>60 (CU) 0</div> </div>	

PIP SUMMARY

Time Mark Every 60 S

Parameters

DLIS Name	Description	Value
RST-C: Reservoir Saturation Pro Tool C		
AIRB	RST Air Borehole	No
BHS	Borehole Status	CASED
BSALOPT	RST Borehole Salinity Option	Unknown
BSFL	RST Borehole Salinity Filter Length	51
DFPC	RST Depth Filter Processing Constant	One
DFPC_TDTL	RST Depth Filter Processing Constant (TDT-like)	Two
MATR	Rock Matrix for Neutron Porosity Corrections	SANDSTONE
NORM_IRAT_RST	RST Normalized Inelastic Ratio	0.48
NORM_SIGM_RST	RST Normalized Sigma	30 CU
RGAI	Near/Far Gain Calibration Ratio	1
TIER_SIGM	RST Sigma Acquisition Mode	0_RST_Sigma
PSPT-B: Production Services Logging Platform		
BHS	Borehole Status	CASED
MATR	Rock Matrix for Neutron Porosity Corrections	SANDSTONE
System and Miscellaneous		
BS	Bit Size	8.000 IN
BSAL	Borehole Salinity	-50000.00 PPM
CSIZ	Current Casing Size	4.500 IN
CWEI	Casing Weight	38.60 LB/F
DO	Depth Offset for Playback	0.0 M
PP	Playback Processing	NORMAL

Format: RST_SIG_ANSW Vertical Scale: 1:200 Graphics File Created: 24-Feb-2009 12:13

OP System Version: 16C0-147

MCM

RST-C SRPC-3624-Q2_2008_OP16_b PSPT-B SRPC-3624-Q2_2008_OP16_b

Input DLIS Files

DEFAULT RST_PSP_013LUP FN:12 PRODUCER 24-Feb-2009 11:53 3507.8 M 3420.0 M

Output DLIS Files

DEFAULT RST_PSP_015PUP FN:14 PRODUCER 24-Feb-2009 12:13

Company: Esso Australia Pty Ltd. Well: A-27a

Input DLIS Files

DEFAULT RST_PSP_010LUP FN:9 PRODUCER 24-Feb-2009 11:28 3507.5 M 3414.7 M

Output DLIS Files

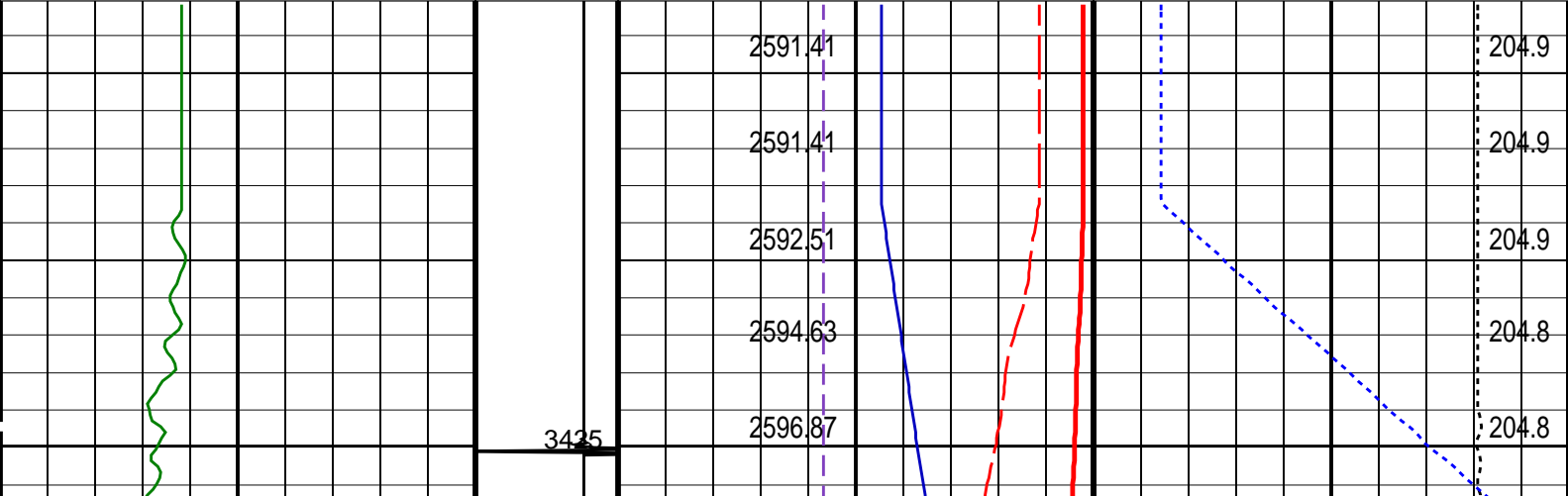
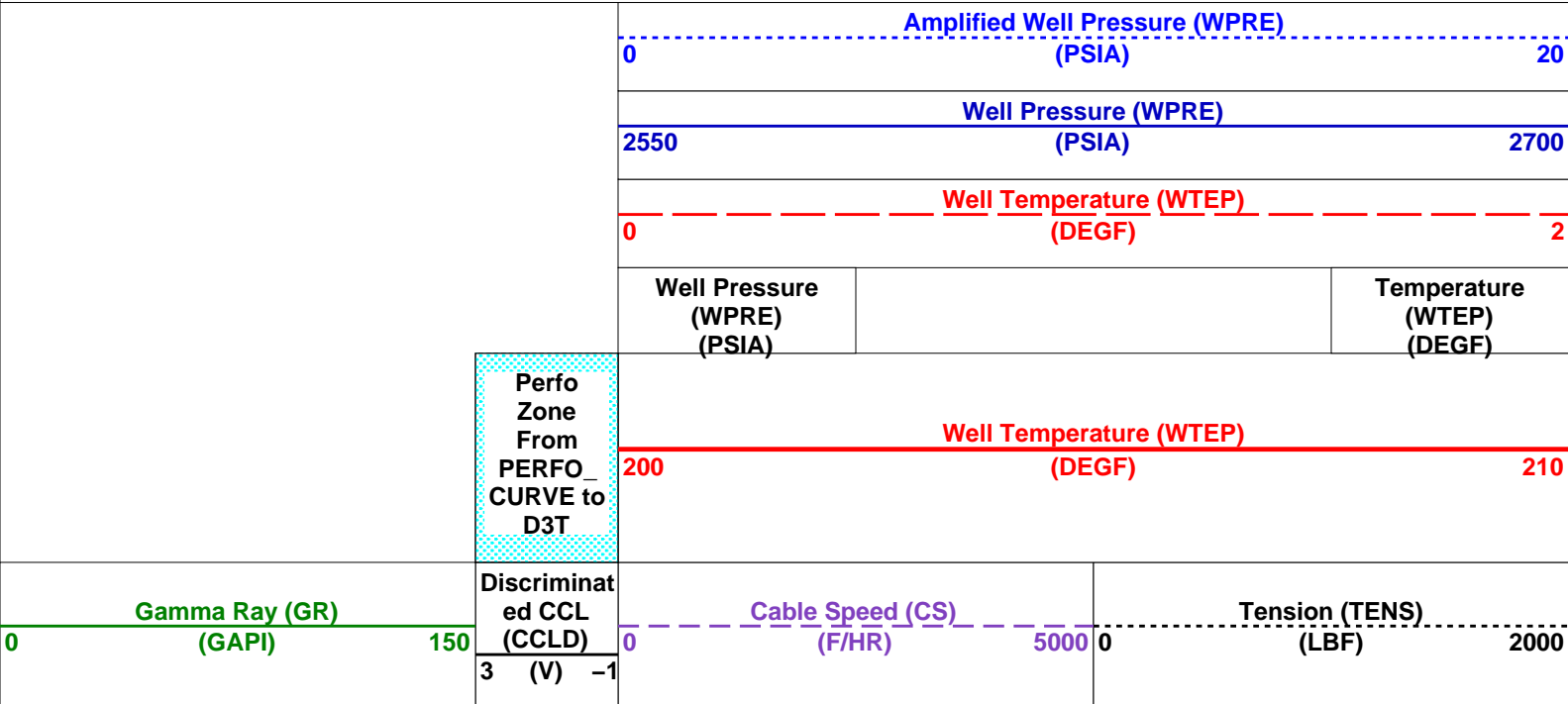
DEFAULT RST_PSP_012PUP FN:11 PRODUCER 24-Feb-2009 11:40 3511.3 M 3413.0 M

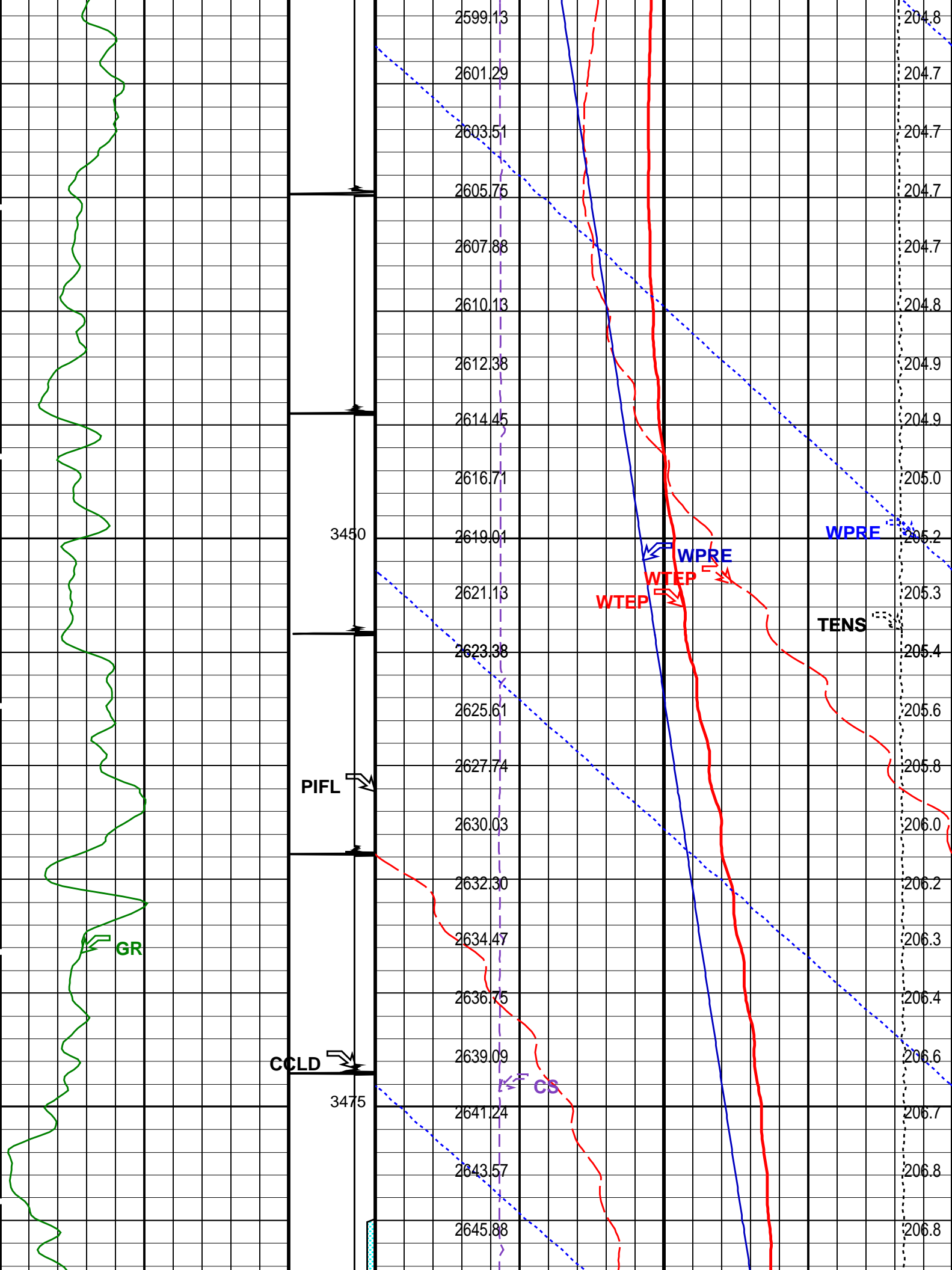
OP System Version: 16C0-147
MCM

RST-C SRPC-3624-Q2_2008_OP16_b PSPT-B SRPC-3624-Q2_2008_OP16_b

PIP SUMMARY

Time Mark Every 60 S





Parameters

DLIS Name		Description				Value	
DO PP	System and Miscellaneous				3.8	M	
	Depth Offset for Playback Playback Processing				NORMAL		
Input DLIS Files							
DEFAULT	RST_PSP_010LUP	FN:9	PRODUCER	24-Feb-2009 11:28	3507.5 M	3414.7 M	
Output DLIS Files							
DEFAULT	RST_PSP_012PUP	FN:11	PRODUCER	24-Feb-2009 11:40			

Company: **Esso Australia Pty Ltd.**

Schlumberger

Well: **A-27a**

Field: **Bream A**Rig: **Prod4 / Crane**Country: **Australia**

RST-C Sigma Survey
2 1/8" Powerjet MWPT Perforation Record
4.5" Posiset Plug Setting Record