

[illegible]

Schlumberger

Company: Esso Australia Ltd.

Well: FLA_A-4b

Field: Flounder

Rig: Prod 4/ Crane

Country: Australia

7 5/8" MPBT Plug
Setting Record

Rig:	Prod 4/ Crane			
Field:	Flounder			
Location:	Gippsland Basin			
Well:	FLA_A-4b			
Company:	Esso Australia Ltd.			
	LOCATION			
	Gippsland Basin Bass Strait	Elev.:		K.B. 33.86 m
				G.L. -93 m
				D.F. 33.2 m
Permanent Datum:	Mean Sea Level		Elev.:	0.0 m
Log Measured From:	Kelly Bushing		33.8 m above Perm. Datum	
Drilling Measured From:	Kelly Bushing			
State:	Max. Well Deviation	Longitude	Latitude	
Victoria	32 deg	148 26' 17.49" E	38 18' 45.24"S	

Logging Date	24-Feb-2006			
Run Number	1			
Depth Driller	2832 m			
Schlumberger Depth	2705.6 m –TD not tagged			
Bottom Log Interval	2684 m			
Top Log Interval	2684 m			
Casing Fluid Type	Production fluids			
Salinity				
Density				
Fluid Level				
BIT/CASING/TUBING STRING				
Bit Size	8.500 in			
From	19.8 m			
To	2832 m			
Casing/Tubing Size	7.625 in			
Weight	29.7 lbm/ft			
Grade	L-80			
From	19.8 m			
To	2782.6 m			
Maximum Recorded Temperatures	111 degC			
Logger On Bottom	24-Feb-2006		Time	9:00
Unit Number	Location			
Recorded By	Paul Tarrant & Owen Darby			
Witnessed By	Greg Rimmer			

				Run 1	Run 2	Run 3
OIL DATA						
Oil Density						
Water Salinity						
Gas Gravity						
Bo						
Bw						
1/Bg						
Bubble Point Pressure						
Bubble Point Temperature						
Solution GOR						
Maximum Deviation				32 deg		
CEMENTING DATA						
Primary/Squeeze				Primary		
Casing String No						
Lead Cement Type						
Volume						
Density						
Water Loss						
Additives						
Tail Cement Type						
Volume						
Density						
Water Loss						
Additives						
Expected Cement Top						
Logging Date						
Run Number						
Depth Driller						
Schlumberger Depth						
Bottom Log Interval						
Top Log Interval						
Casing Fluid Type						
Salinity						
Density						
Fluid Level						
BIT/CASING/TUBING STRING						
Bit Size						
From						
To						
Casing/Tubing Size						
Weight						
Grade						
From						
To						
Maximum Recorded Temperatures						
Logger On Bottom						
Unit Number						
Recorded By						
Witnessed By						

DEPTH SUMMARY LISTING

Date Created: 24-FEB-2006 7:01:48

Depth System Equipment

Depth Measuring Device		Tension Device		Logging Cable	
Type:	IDW-H	Type:	CMTD-B/A	Type:	2-32ZT
Serial Number:	797	Serial Number:	1037	Serial Number:	4207
Calibration Date:	01 May 2005	Calibration Date:	15 Feb 2006	Length:	5002.07 M
Calibrator Serial Number:	1009	Calibrator Serial Number:	1174	Conveyance Method: Wireline Rig Type: Offshore_Fixed	
Calibration Cable Type:	2-32ZT	Calibration Gain:	1.38		
Wheel Correction 1:	-3	Calibration Offset:	448.00		
Wheel Correction 2:	2				

Depth Control Parameters

Log Sequence:	Subsequent Trip To the Well
Reference Log Name:	Solar Log
Reference Log Run Number:	Unknown
Reference Log Date:	Unknown

Depth Control Remarks

1.
2.
3.
4.
5.
6.

DISCLAIMER

THE USE OF AND RELIANCE UPON THIS RECORDED-DATA BY THE HEREIN NAMED COMPANY (AND ANY OF ITS AFFILIATES, PARTNERS, REPRESENTATIVES, AGENTS, CONSULTANTS AND EMPLOYEES) IS SUBJECT TO THE TERMS AND CONDITIONS AGREED UPON BETWEEN SCHLUMBERGER AND THE COMPANY, INCLUDING: (a) RESTRICTIONS ON USE OF THE RECORDED-DATA; (b) DISCLAIMERS AND WAIVERS OF WARRANTIES AND REPRESENTATIONS REGARDING COMPANY'S USE OF AND RELIANCE UPON THE RECORDED-DATA; AND (c) CUSTOMER'S FULL AND SOLE RESPONSIBILITY FOR ANY INFERENCE DRAWN OR DECISION MADE IN CONNECTION WITH THE USE OF THIS RECORDED-DATA.

OTHER SERVICES1

OS1: Water Dump Bailer
OS2: Cement Dump Bailer
OS3:
OS4:
OS5:

REMARKS: RUN NUMBER 1

Correlated to ExxonMobil solar composite log, provided by client

Objective:

RIH with Dummy plug carry out correlation pass. RIH with MPBT and set with top sealing element at approximately 2684.0m MDKB, to isolate existing perforations. Two dump bailer run's are required one water one cement to drop approximaetly 1.0m of the plug.

CCL stop depth = 2676.8m MDKB

CCL to top sealing element = 7.2m

2676.8m + 7.2m = 2684.0m MDKB setting depth					
Crew: Jake Annear, Brendan Flynn and John Light					
RUN 1			RUN 2		
PROGRAM VERSION: 13C0-300 FLUID LEVEL:			PROGRAM VERSION: FLUID LEVEL:		
LOGGED INTERVAL	START	STOP	LOGGED INTERVAL	START	STOP
EQUIPMENT DESCRIPTION					
RUN 1			RUN 2		
SURFACE EQUIPMENT			SURFACE EQUIPMENT		
WITM-A			MPBM 47		
DOWNHOLE EQUIPMENT			DOWNHOLE EQUIPMENT		
AH-SWBS AH-SWBS 761			AH-SWBS AH-SWBS 763		
AH-SWBS AH-SWBS 762			AH-SWBS AH-SWBS 762		
AH-SWBS AH-SWBS 763			AH-SWBS AH-SWBS 761		
MH-SWHS MH-SWHS 726			MH-SWHS MH-SWHS 726		
EQF-43 EQF-43			MPSU-CA MPSU-CA 1011		
PSPT-A/B PSC-A PSPT-B PSTC PBMS-B CQG_F_Mano RTD_Thermometer GR CCL PBMS			CCL Tachomete Cable Cur Head Volt Tension		
TelStatus CTEM			TOOL ZERO		
5.49			9.97		
5.49			9.51		
4.36					

Well Temp 3.43
 CQG Manom 3.33
 CCL 3.20
 PBMS PSTC 2.97

AH-Dummy Plug
 AH-Dummy Plug

2.97

Tension HV 0.00
 TOOL ZERO

MAXIMUM STRING DIAMETER 2.13 IN
 MEASUREMENTS RELATIVE TO TOOL ZERO
 ALL LENGTHS IN METERS

MPEX-AA
 MPEX-AA

3.10

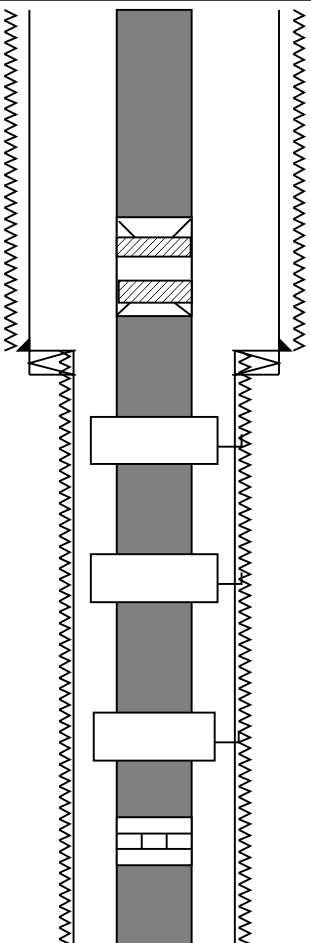
TOOL BOTTOM

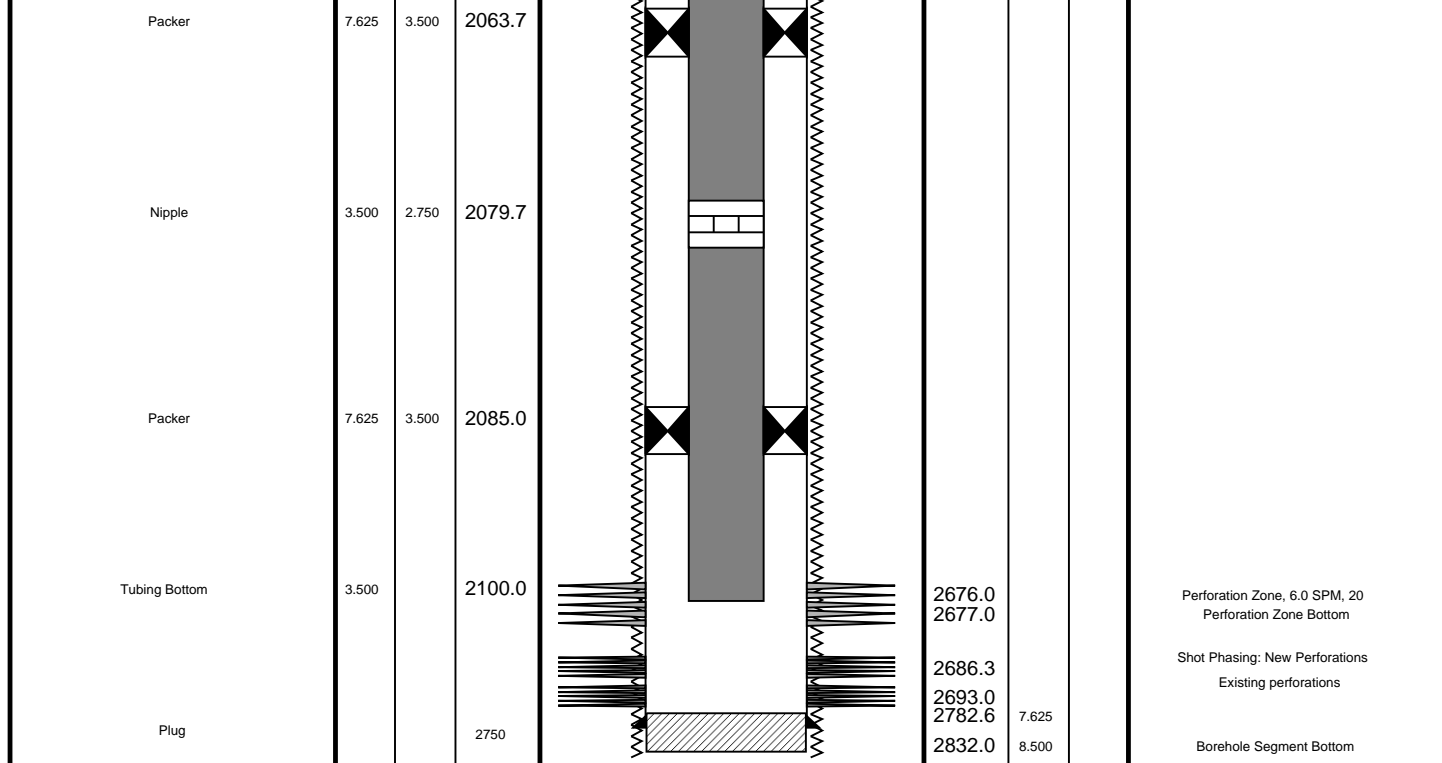
MAXIMUM STRING DIAMETER 2.13 IN
 MEASUREMENTS RELATIVE TO TOOL ZERO
 ALL LENGTHS IN METERS

Client: Esso Australia. Ltd
 Well: A-4b
 Field: Gippsland Basin
 State: Victoria
 Country: Australia

Rig Name: Flounder
 Reference Datum: Mean Sea Level
 Elevation:

Drawing Date: 24/02/2006
 API #:

Production String	(in)		(m)	Well Schematic	(m)		(in)		Casing String
	OD	ID	MD		MD	OD	ID		
Tubing	3.500		19.4		19.8	13.625 11.750		Borehole Segment Casing String	
SSSV			453.5		587.2 587.2 587.2	13.625 8.500 11.750		Borehole Segment Bottom Borehole Segment Liner Hanger Casing String, 44.3 kg/m, L-80	
Gas Lift Mandrel	5.968	2.920	627.1			7.625			
Gas Lift Mandrel	5.968	2.920	818.1						
Gas Lift Mandrel	5.680	2.920	1000.0						
Nipple	3.500	2.750	1016.1						



All depths are drillers depths

Schlumberger

Operational Summary Listing

MAXIS Field Log

PERFO2 Water Dump Bailer Operational Summary Listing

Device	Status	Req Depth (M)	Obs Depth (M)	Time Used
--------	--------	----------------	----------------	-----------

GUN1	Used	2669.4	2669.4	Fri Feb 24 14:40:22 2006
------	------	--------	--------	--------------------------

PERFO2 Cement Dump Bailer Operational Summary Listing

Device	Status	Req Depth (M)	Obs Depth (M)	Time Used
--------	--------	----------------	----------------	-----------

GUN1	Used	2669.4	2669.4	Fri Feb 24 16:12:11 2006
------	------	--------	--------	--------------------------

Schlumberger

2 1/8" Dump Bailer Cement

MAXIS Field Log

Input DLIS Files

DEFAULT	PERFO_046LUP	FN:45	PRODUCER	24-Feb-2006 16:10	2672.8 M	2626.3 M
---------	--------------	-------	----------	-------------------	----------	----------

Output DLIS Files

DEFAULT	PERFO_047PUP	FN:46	PRODUCER	24-Feb-2006 16:44	2672.5 M	2626.6 M
---------	--------------	-------	----------	-------------------	----------	----------

OP System Version: 13C0-300

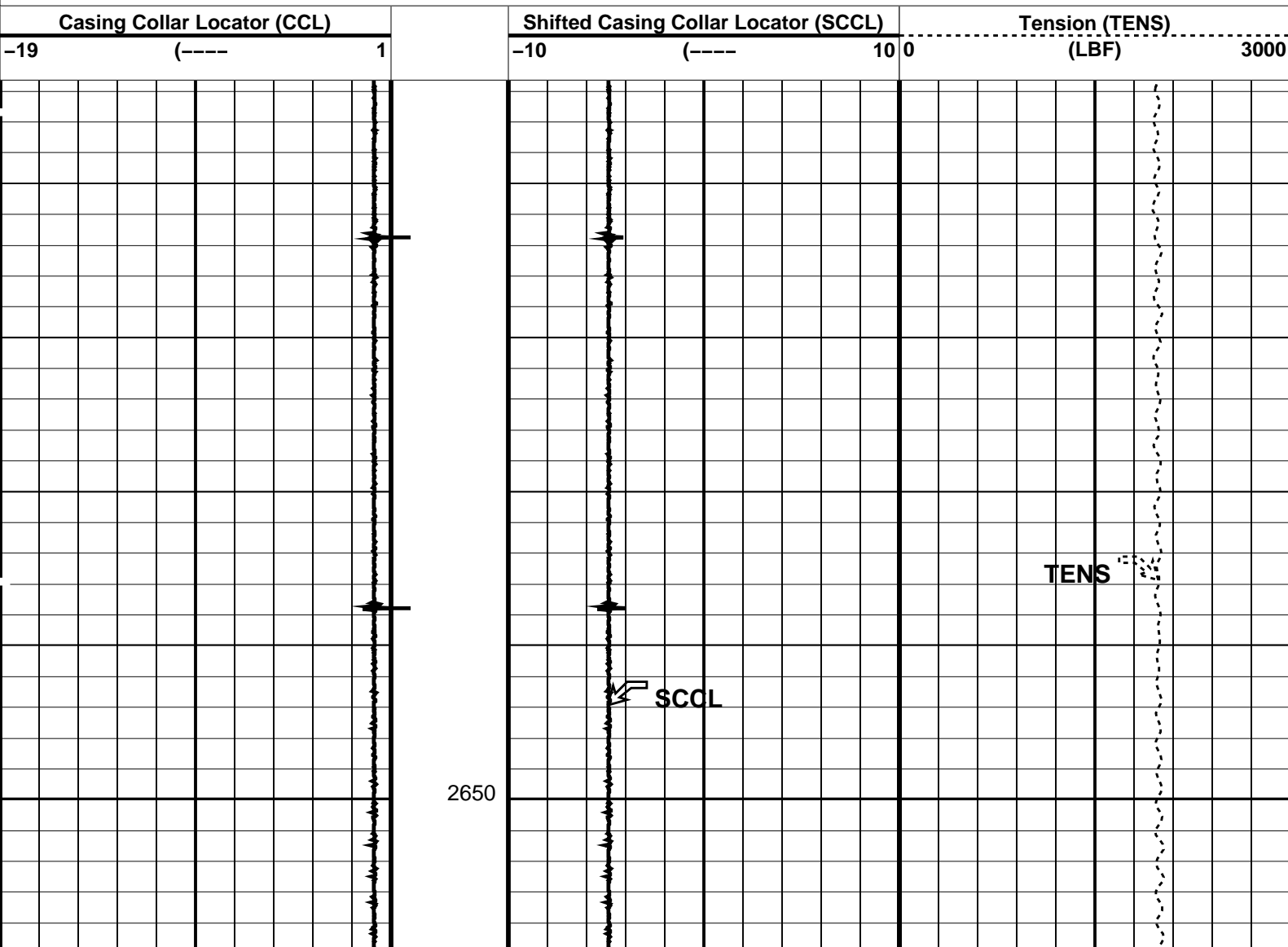
MCM

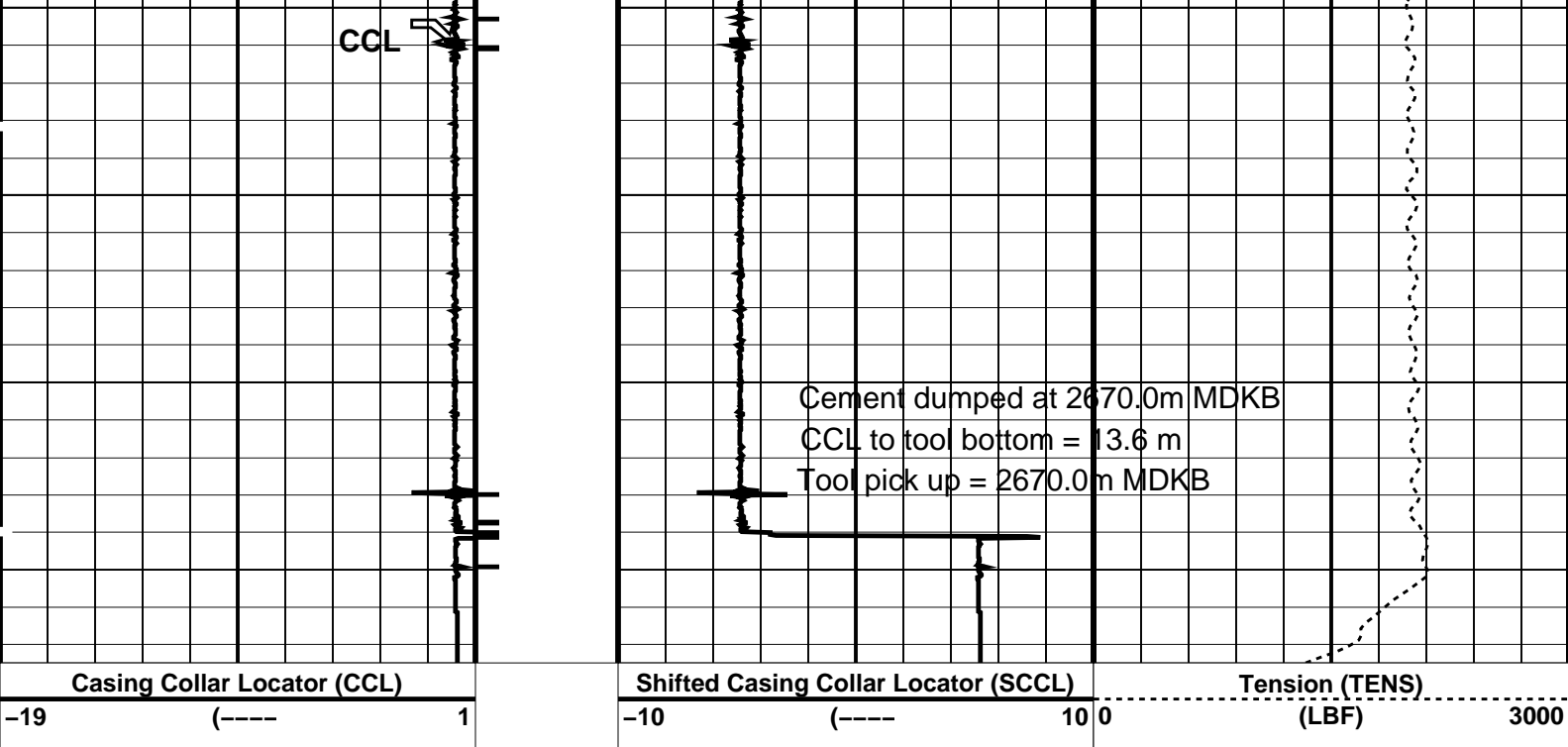
SHM_GUN	13C0-300	CCL-L	13C0-300
---------	----------	-------	----------

PIP SUMMARY

└─ Casing Collars

Time Mark Every 60 S





PIP SUMMARY

Time Mark Every 60 S

Time Mark Every 60 S

Parameters

DLIS Name	Description	Value
CCLD	CCL-L: Casing Collar Locator	12 IN
CCLT	CCL reset delay	0.3 V
	CCL Detection Level	
DO	System and Miscellaneous	-0.3 M
PP	Depth Offset for Playback	NORMAL
	Playback Processing	

Format: PERFO Vertical Scale: 1:200 Graphics File Created: 24-Feb-2006 16:44

OP System Version: 13C0-300

MCM

SHM_GUN 13C0-300 CCL-L 13C0-300

Input DLIS Files

DEFAULT PERFO_046LUP FN:45 PRODUCER 24-Feb-2006 16:10 2672.8 M 2626.3 M

Output DLIS Files

DEFAULT PERFO_047PUP FN:46 PRODUCER 24-Feb-2006 16:44

Schlumberger

2 1/8" Dump Bailer
Water

MAXIS Field Log

Input DLIS Files

Output DLIS Files

OP System Version: 13C0-300
MCM

SHM_GUN

13C0-300

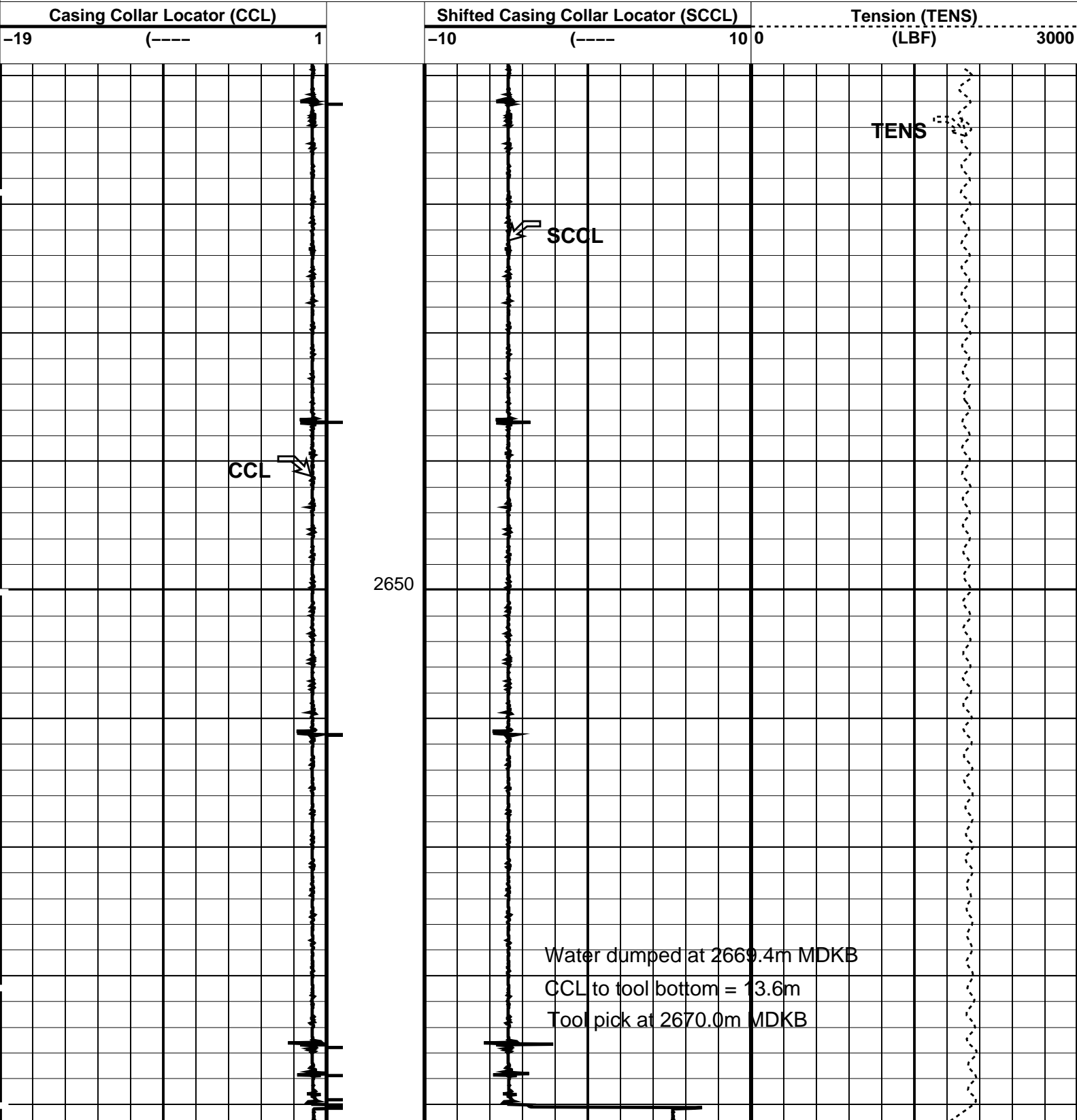
CCL-L

13C0-300

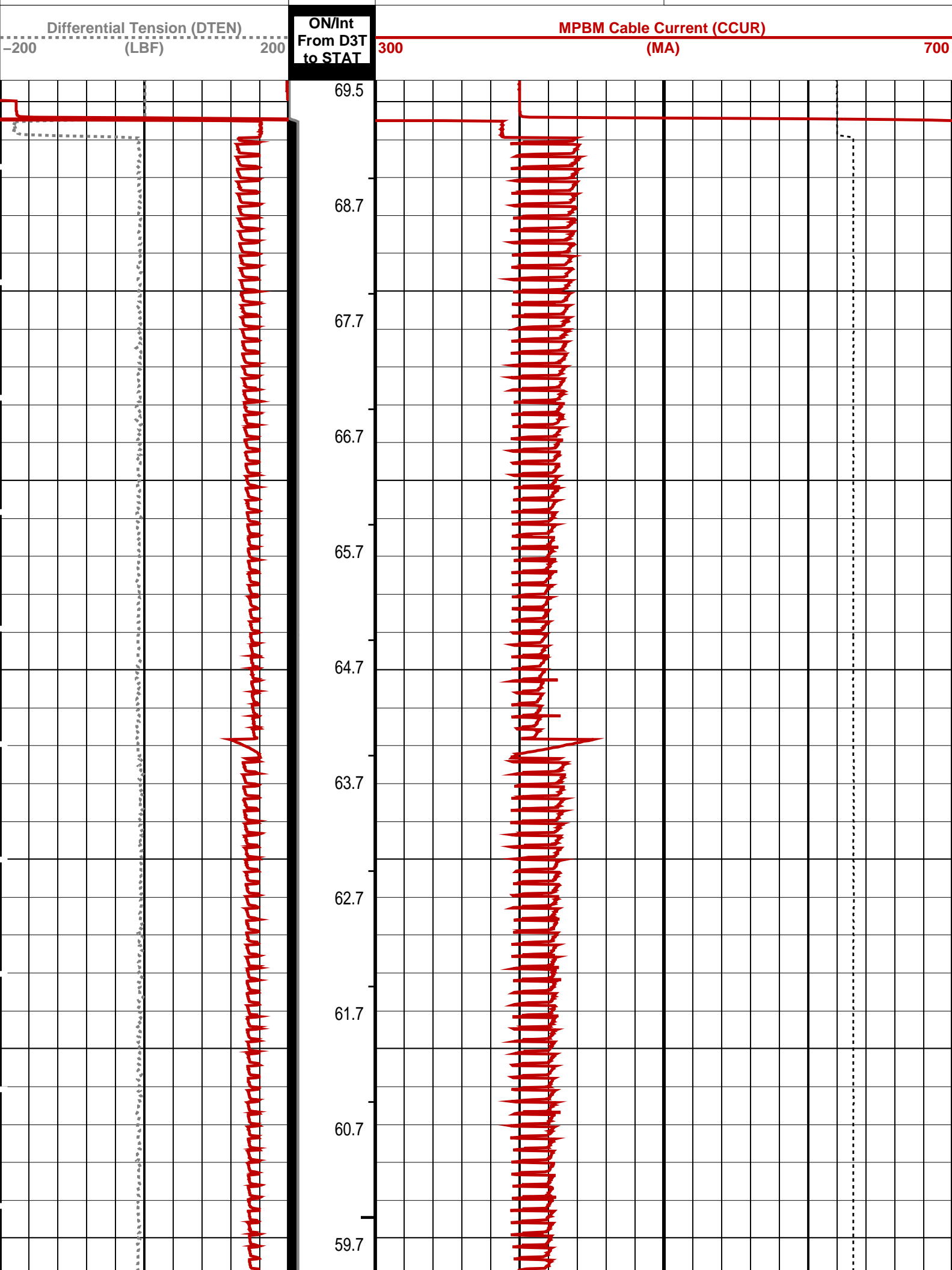
PIP SUMMARY

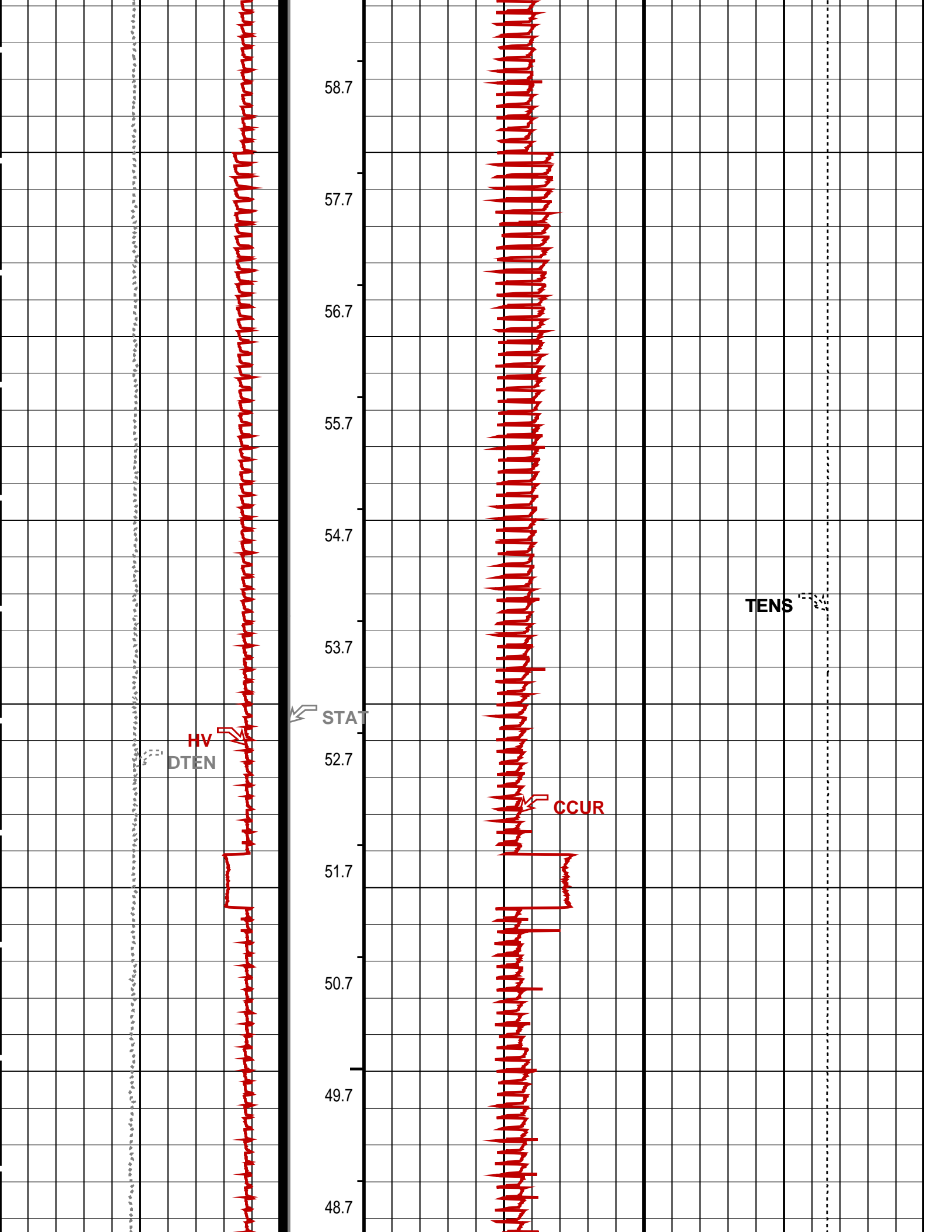
Time Mark Every 60 S

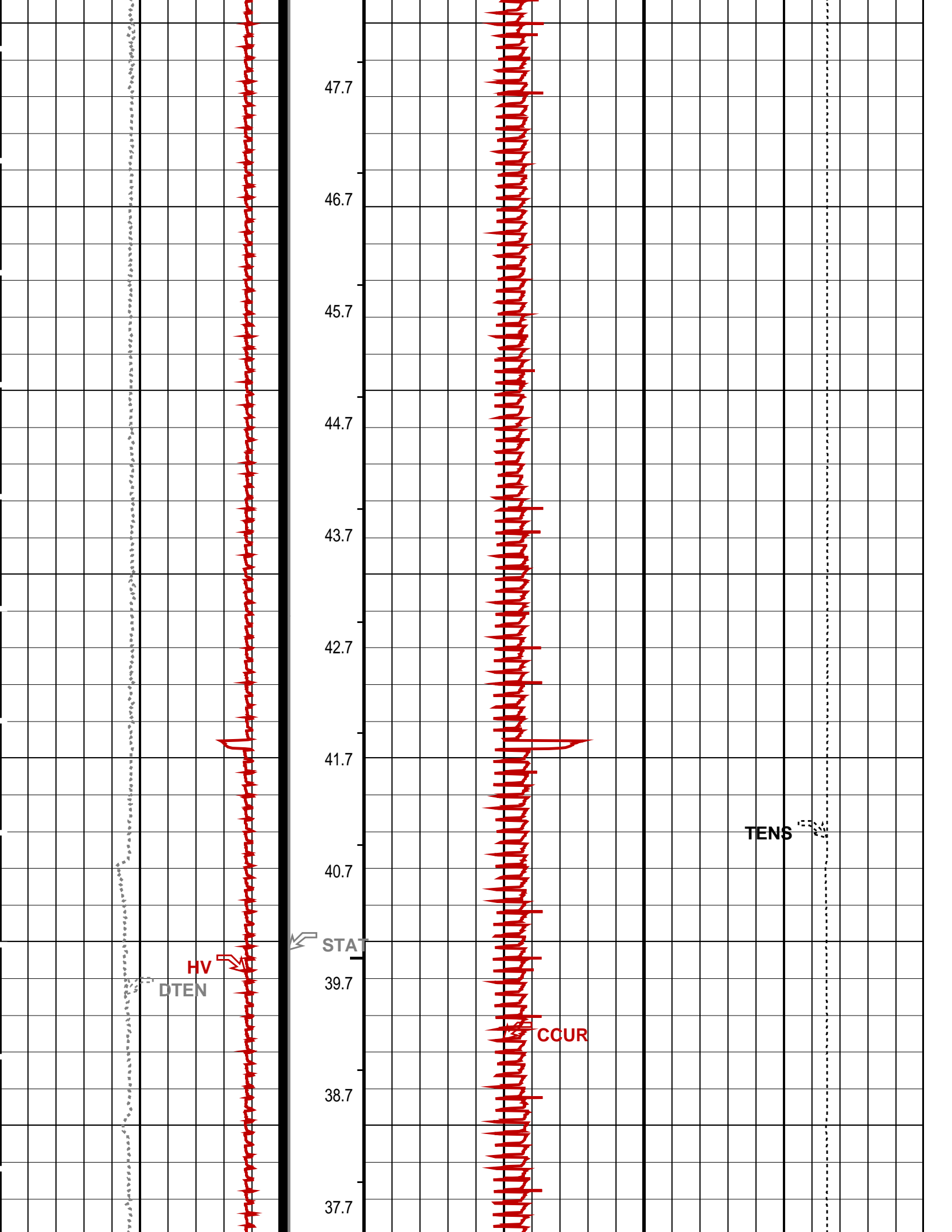
Casing Collars

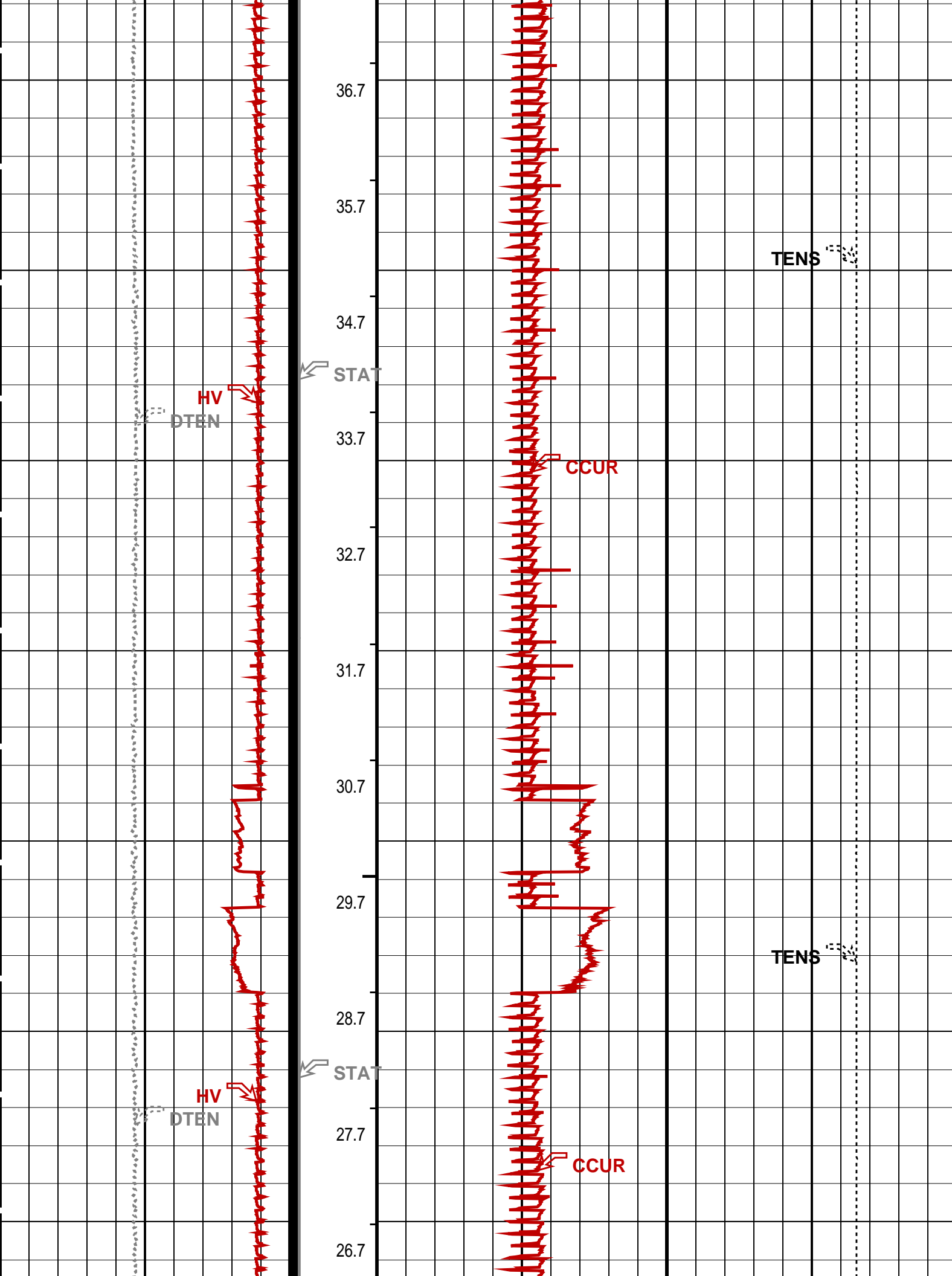


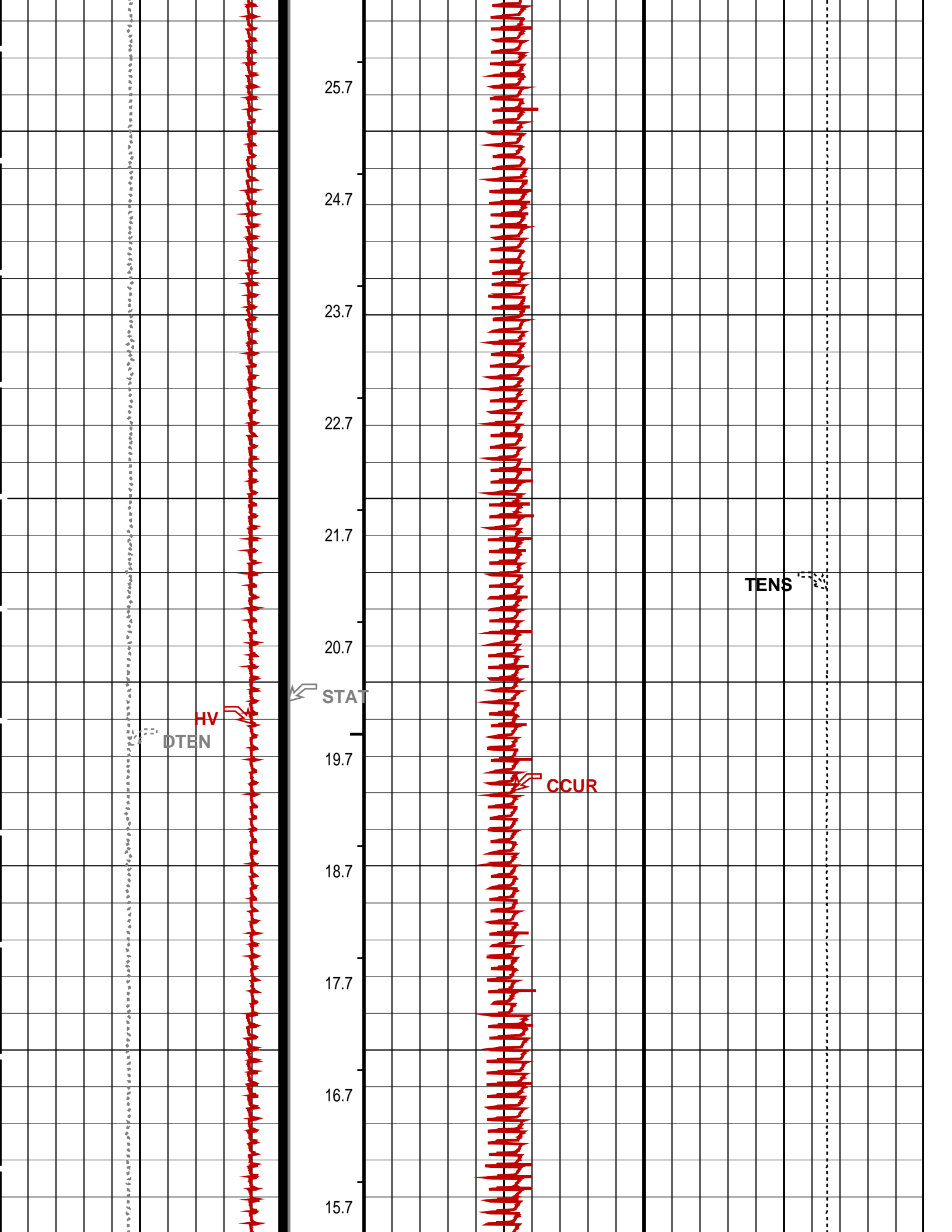
	RUN Time (RTIM) (MN)	
MPSU Head Voltage (HV)	MPSU Run Status (STAT)	Tension (TENS) (LBF)
200 (V) 300	0 (----10	0 3000

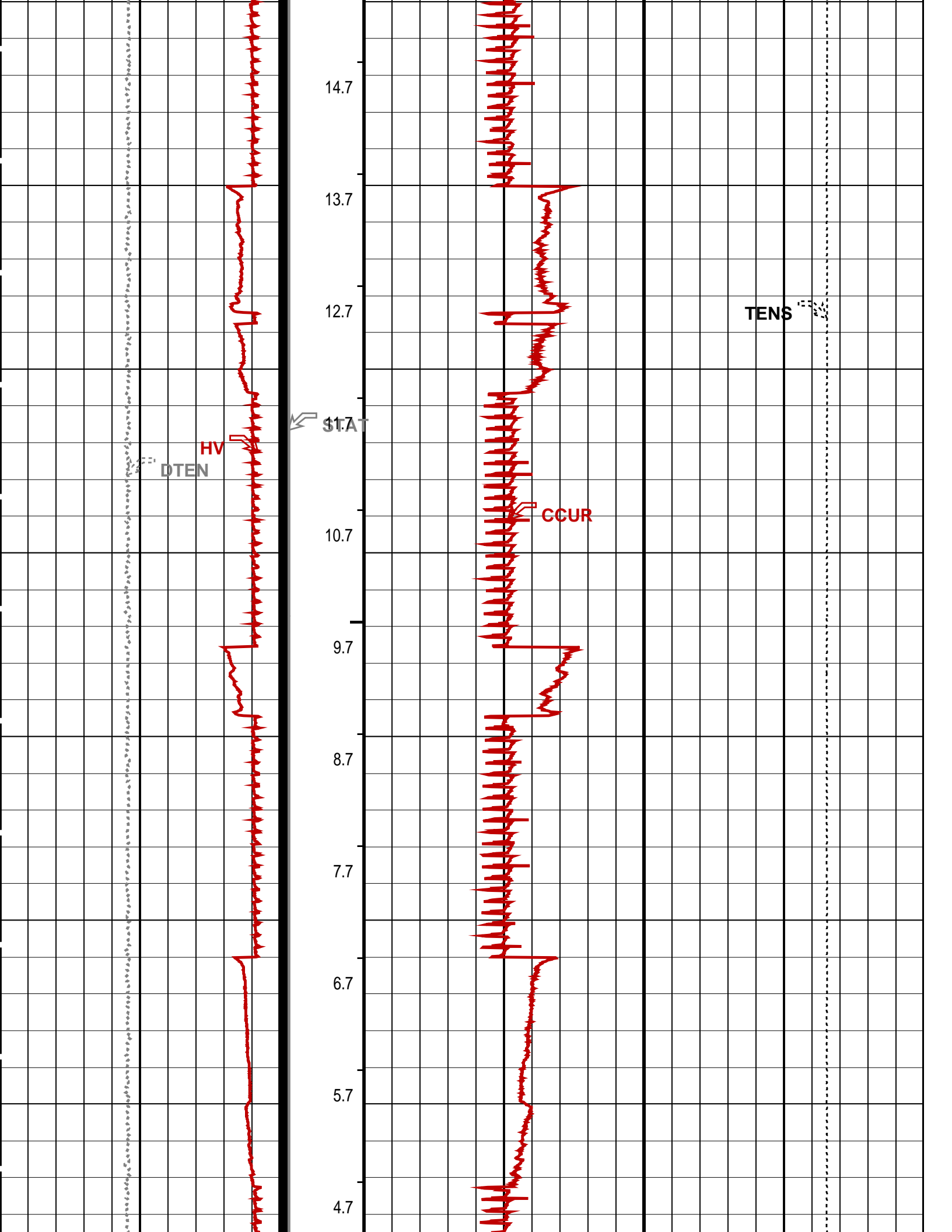


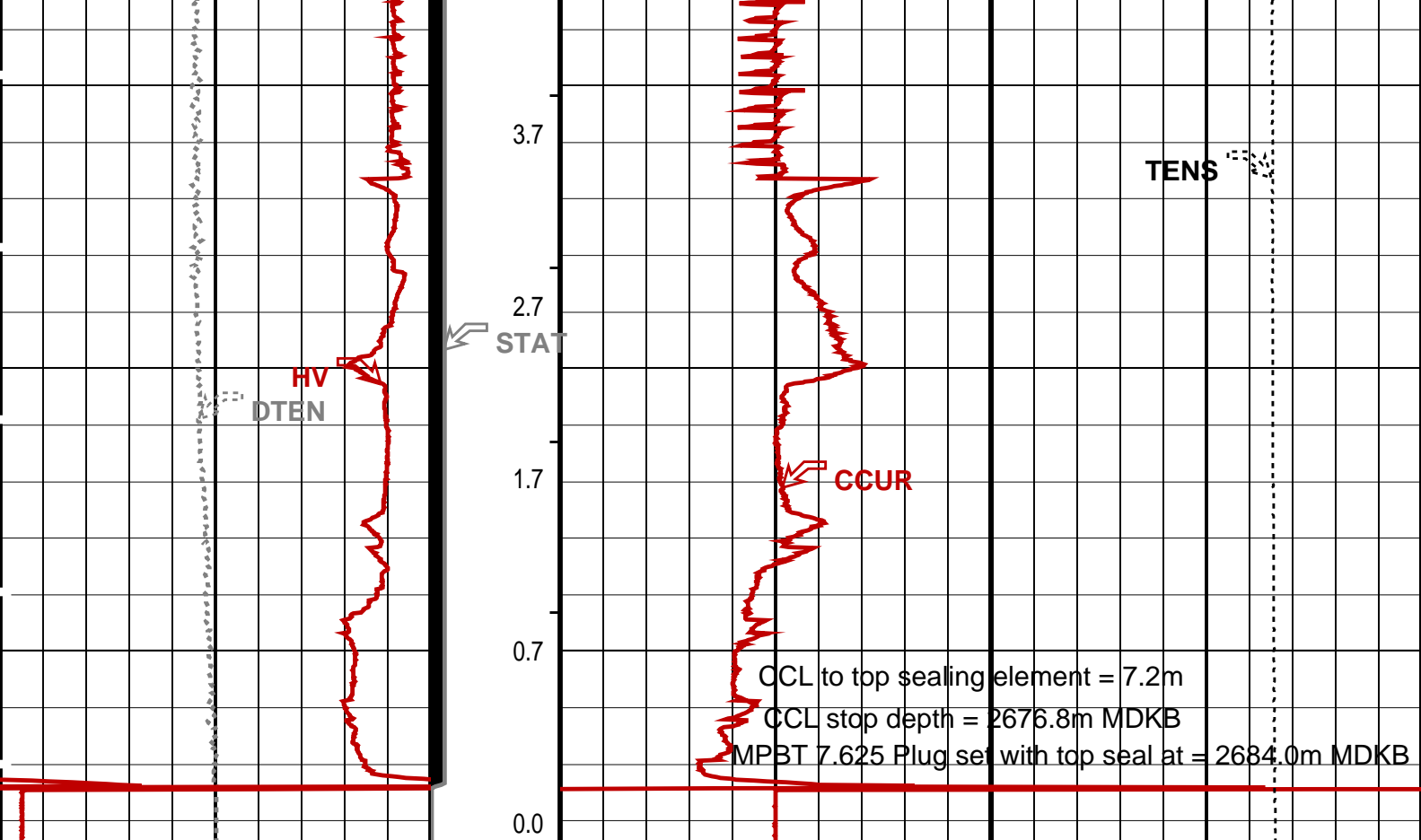












Differential Tension (DTEN) (LBF)	ON/Int From D3T to STAT	MPBM Cable Current (CCUR) (MA)
-200 200	300 700	
MPSU Head Voltage (HV) (V)	MPSU Run Status (STAT)	Tension (TENS) (LBF)
200 300	0 (----10)	0 3000
	RUN Time (RTIM) (MN)	

PIP SUMMARY

- ↵ MPSU Run Time Every 1 MN
- ↵ MPSU Run Time Every 10 MN

Time Mark Every 60 S

Parameters

DLIS Name	Description	Value
MPSU-CA: MECHANICAL PLUGBACK SETTING UNIT IPUMP	Intensifier Pump	TRUE

Format: MPBT Vertical Scale: 1:600 Graphics File Created: 24-Feb-2006 11:28

OP System Version: 13C0-300

MCM

MPEX-EA_S	13C0-300	MPSU-CA	13C0-300
CCL-L	13C0-300		

Output DLIS Files

DEFAULT	CCL_029LUP	FN:28	PRODUCER	24-Feb-2006 11:28
---------	------------	-------	----------	-------------------

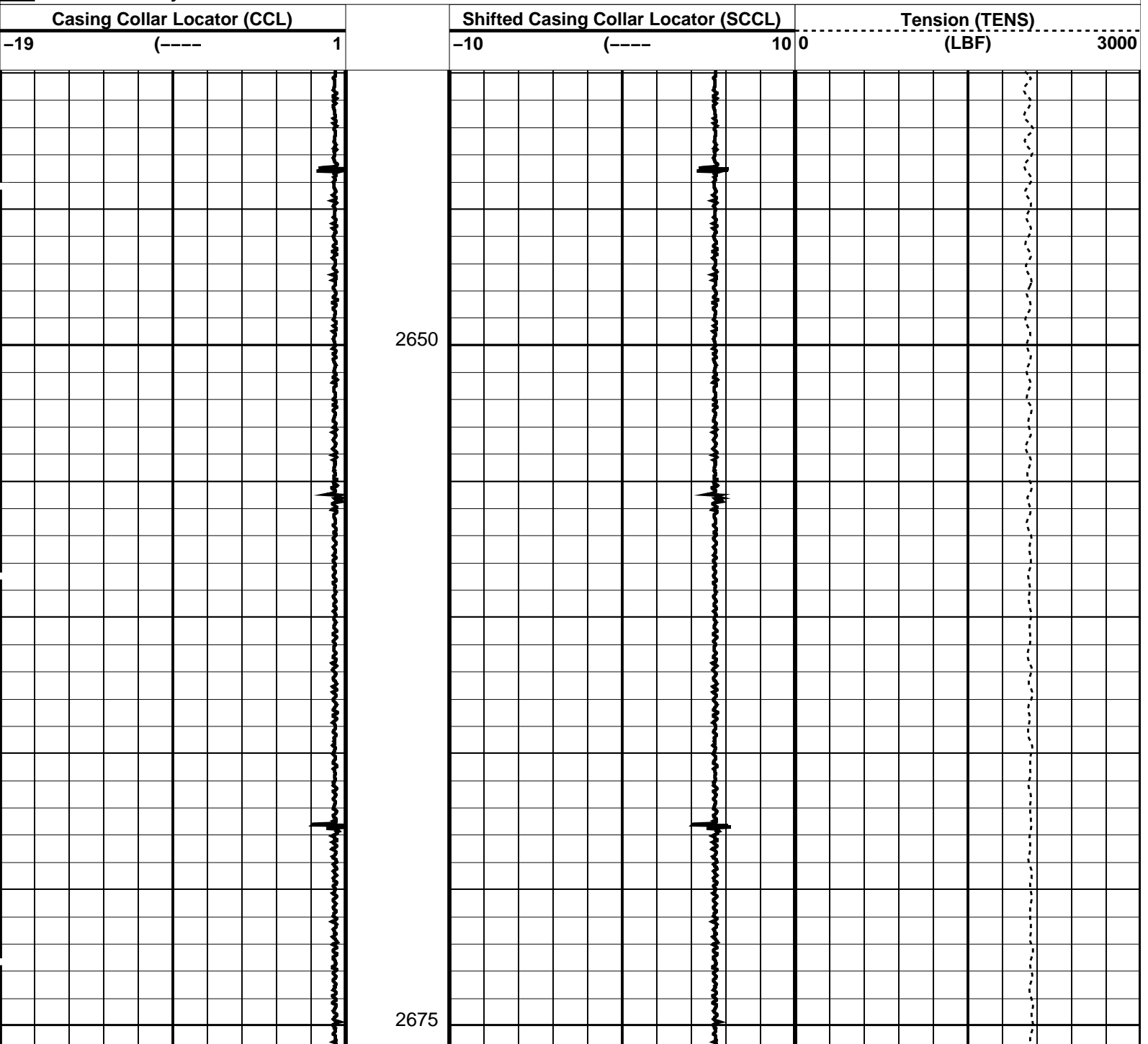
MAXIS Field Log

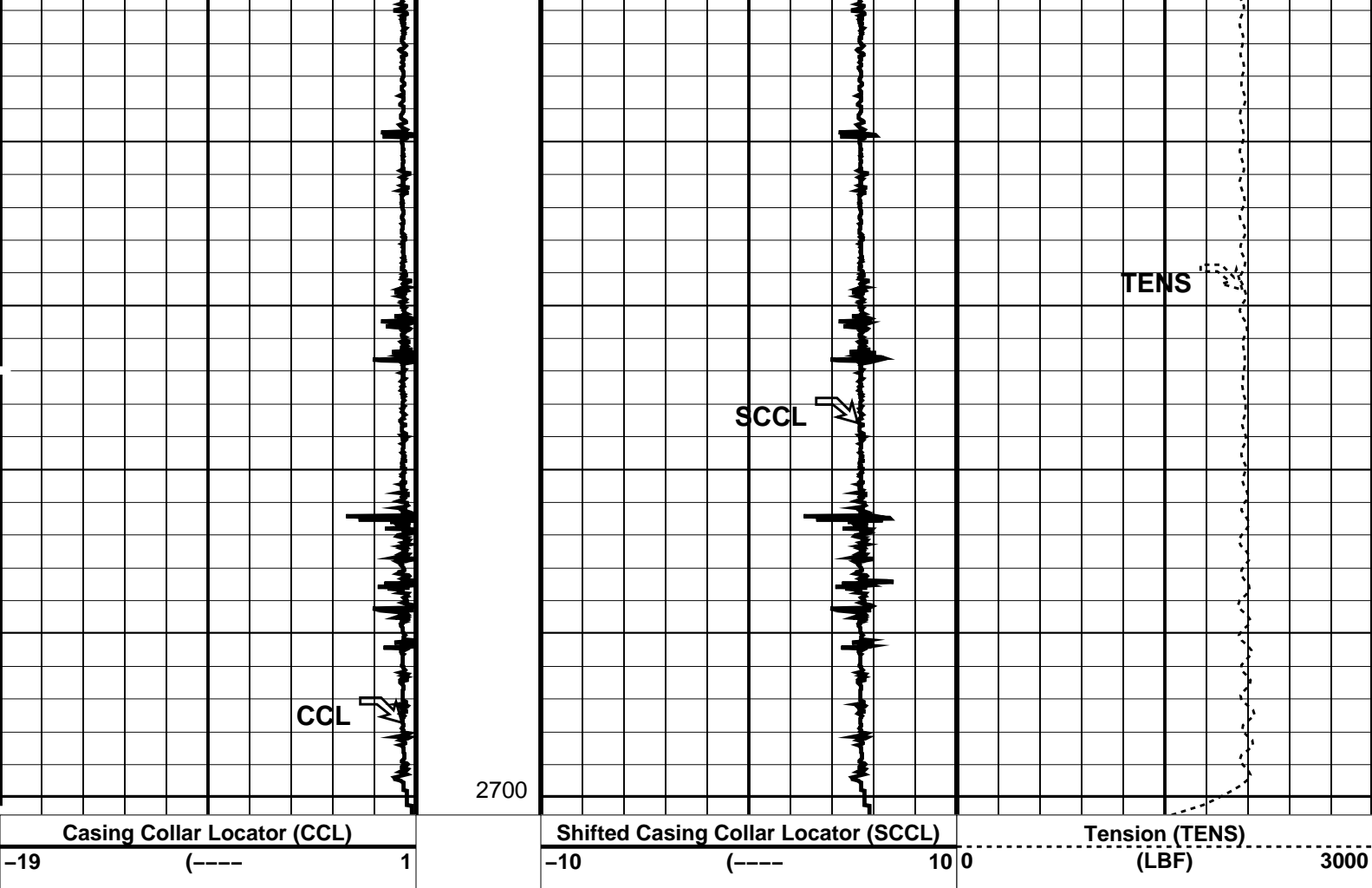
Output DLIS Files

DEFAULT CCL_026LUP FN:25 PRODUCER 24-Feb-2006 11:20 2700.5 M 2639.9 M

OP System Version: 13C0-300
MCMMPEx-EA_S 13C0-300 MPSU-CA 13C0-300
CCL-L 13C0-300

PIP SUMMARY

☒ Time Mark Every 60 S



PIP SUMMARY

Time Mark Every 60 S

Parameters

DLIS Name	Description	Value
CCL-L: Casing Collar Locator		
CCLD	CCL reset delay	12 IN
CCLT	CCL Detection Level	0.3 V

Format: PERFO Vertical Scale: 1:200 Graphics File Created: 24-Feb-2006 11:20

OP System Version: 13C0-300

MCM

MPEX-EA_S	13C0-300	MPSU-CA	13C0-300
CCL-L	13C0-300		

Output DLIS Files

DEFAULT	CCL_026LUP	FN:25	PRODUCER	24-Feb-2006 11:20
---------	------------	-------	----------	-------------------

Schlumberger

2 1/8" Dummy Plug
Correlation Pass

MAXIS Field Log

Input DLIS Files

DEFAULT	PSP_010LUP	FN:9	PRODUCER	24-Feb-2006 08:43	2702.2 M	2630.9 M
---------	------------	------	----------	-------------------	----------	----------

Output DLIS Files

DEFAULT	PSP_013PUP	FN:12	PRODUCER	24-Feb-2006 09:23	2705.6 M	2634.7 M
---------	------------	-------	----------	-------------------	----------	----------

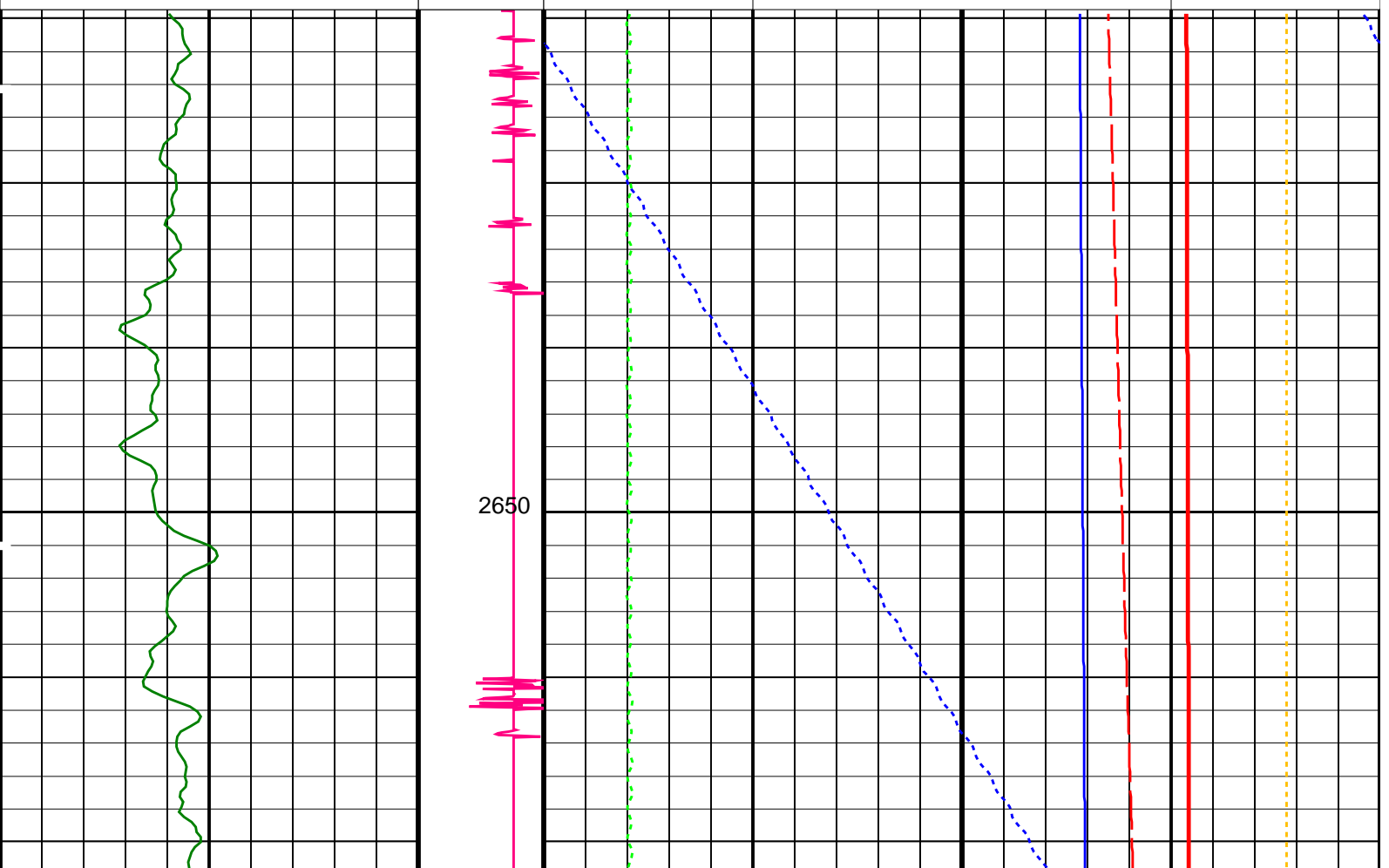
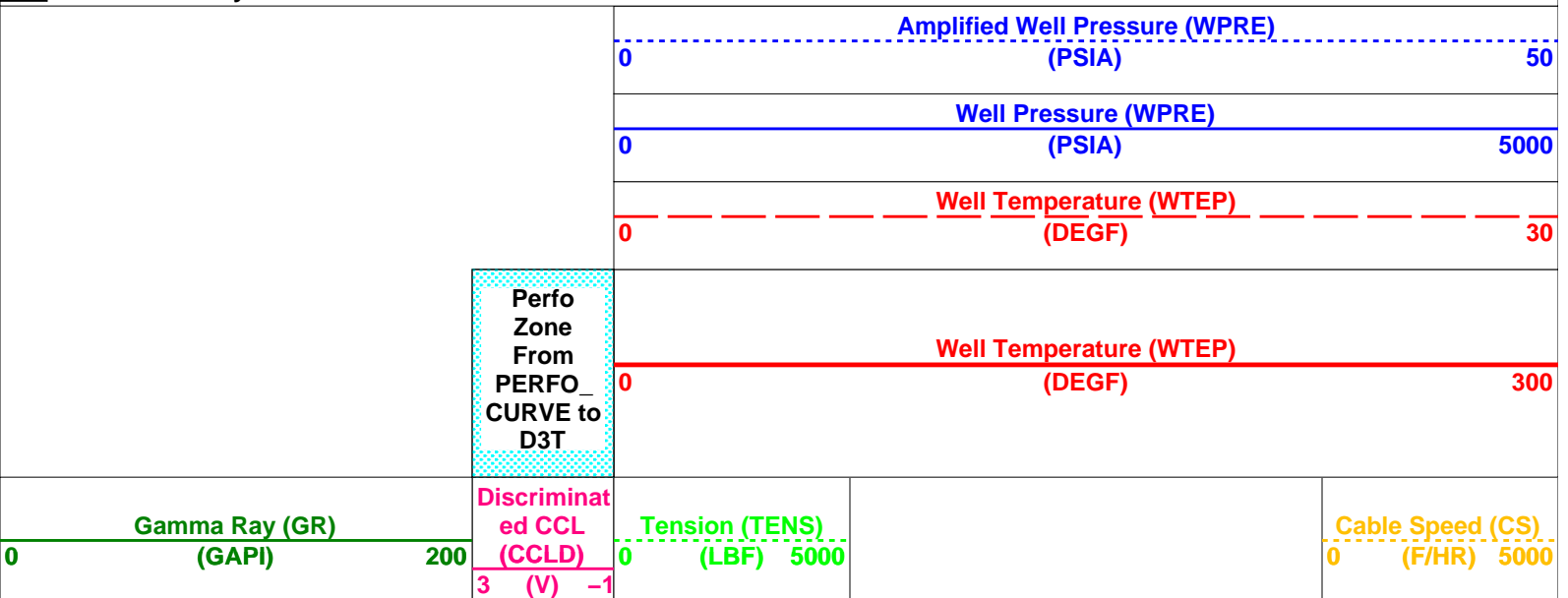
OP System Version: 13C0-300

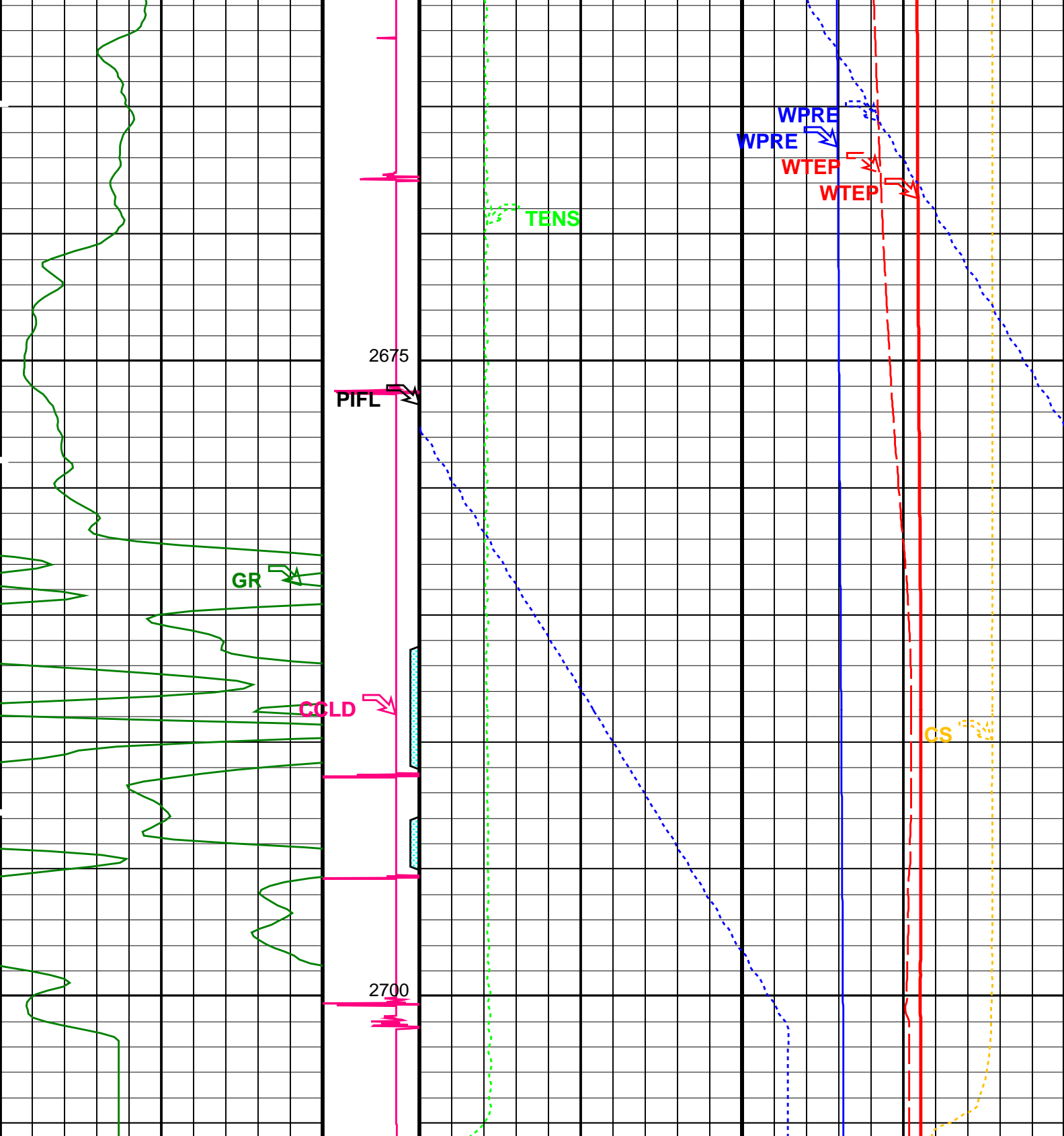
MCM

PSPT-A/B	13C0-300
----------	----------

PIP SUMMARY

Time Mark Every 60 S





Gamma Ray (GR) (GAPI)	Discriminat ed CCL (CCLD) (V)	Tension (TENS) (LBF)	Cable Speed (CS) (F/HR)
0	3	0	0
200	-1	5000	5000

Perfo Zone From PERFO_ CURVE to D3T	Well Temperature (WTEP) (DEGF)
	0
	300

Well Temperature (WTEP) (DEGF)
0
30

	Well Pressure (WPRE)	
0	(PSIA)	5000
	Amplified Well Pressure (WPRE)	
0	(PSIA)	50

PIP SUMMARY

Time Mark Every 60 S

Format: PSP_1

Vertical Scale: 1:200

Graphics File Created: 24-Feb-2006 09:23

OP System Version: 13C0-300

MCM

PSPT-A/B

13C0-300

Parameters						
DLIS Name		Description			Value	
System and Miscellaneous						
DO		Depth Offset for Playback			3.3	M
PP		Playback Processing			NORMAL	
Input DLIS Files						
DEFAULT	PSP_010LUP	FN:9	PRODUCER	24-Feb-2006 08:43	2702.2 M	2630.9 M
Output DLIS Files						
DEFAULT	PSP_013PUP	FN:12	PRODUCER	24-Feb-2006 09:23		

Company:

Esso Australia Ltd.

Schlumberger

Well:

FLA_A-4b

Field:

Flounder

Rig:

Prod 4/ Crane

Country:

Australia

7 5/8" MPBT Plug

Setting Record