

DEPTH SUMMARY LISTING

Date Created: 16-FEB-2006 18:18:51

Depth System Equipment

Depth Measuring Device		Tension Device		Logging Cable	
Type:	IDW-H	Type:	CMTD-C	Type:	2-32ZT
Serial Number:	797	Serial Number:	1037	Serial Number:	4207
Calibration Date:	01-May-2005	Calibration Date:	15-Feb-2006	Length:	5098.08 M
Calibrator Serial Number:	1009	Calibrator Serial Number:	1174	Conveyance Method:	Wireline
Calibration Cable Type:	2-32ZT	Calibration Gain:	1.38	Rig Type:	Offshore_Fixed
Wheel Correction 1:	-3	Calibration Offset:	448.00		
Wheel Correction 2:	2				

Depth Control Parameters

Log Sequence:	Subsequent Log In the Well
Reference Log Name:	ExxonMobil Solar composite log
Reference Log Run Number:	Unknown
Reference Log Date:	Unknown

Depth Control Remarks

1. Correlated to ExxonMobil Solar composite log provided by client
2. Used IDW as primary depth control
3. Used Z-Chart as secondary depth control
4.
5.
6.

DISCLAIMER

THE USE OF AND RELIANCE UPON THIS RECORDED-DATA BY THE HEREIN NAMED COMPANY (AND ANY OF ITS AFFILIATES, PARTNERS, REPRESENTATIVES, AGENTS, CONSULTANTS AND EMPLOYEES) IS SUBJECT TO THE TERMS AND CONDITIONS AGREED UPON BETWEEN SCHLUMBERGER AND THE COMPANY, INCLUDING: (a) RESTRICTIONS ON USE OF THE RECORDED-DATA; (b) DISCLAIMERS AND WAIVERS OF WARRANTIES AND REPRESENTATIONS REGARDING COMPANY'S USE OF AND RELIANCE UPON THE RECORDED-DATA; AND (c) CUSTOMER'S FULL AND SOLE RESPONSIBILITY FOR ANY INFERENCE DRAWN OR DECISION MADE IN CONNECTION WITH THE USE OF THIS RECORDED-DATA.

OTHER SERVICES1	OTHER SERVICES2
OS1: MPBT	OS1:
OS2:	OS2:
OS3:	OS3:
OS4:	OS4:
OS5:	OS5:
REMARKS: RUN NUMBER 1	REMARKS: RUN NUMBER 2
Correlated to ExxonMobil provided by client.	
Objective:	
RIH with 1m of phased 2 1/8" enerjet gun and perforate required	
zone, whilst attempting to obtain a 300 psi under blanced.	
Flow well for 15 min after perforation and record Pressure/Temperature	
readings.	
Before perforation FBHP = 3249.1psia, FBHT = 233.5 DegF	
After perforation FBHP = 3255.1psia FBHT = 234.1 DegF	

API data 2 1/8" Power Spiral Enerjet,HMX	
Entrance hole diameter = 0.32"	
Penetration = 27.2 "	
CCL to top shot = 4.5 m	
CCL to gun bottom = 6.0 m	
Required perforation interval = 2676 to 2677 MDKB	
Gun fired at = 2671.5 MDKB	
Gun = G-1000, 1000 lb, 1000 lb	

RUN 1			RUN 2		
SERVICE ORDER #: PROGRAM VERSION: 13C0-300 FLUID LEVEL:			SERVICE ORDER #: PROGRAM VERSION: FLUID LEVEL:		
LOGGED INTERVAL	START	STOP	LOGGED INTERVAL	START	STOP

[illegible]

RUN 1 RUN 2

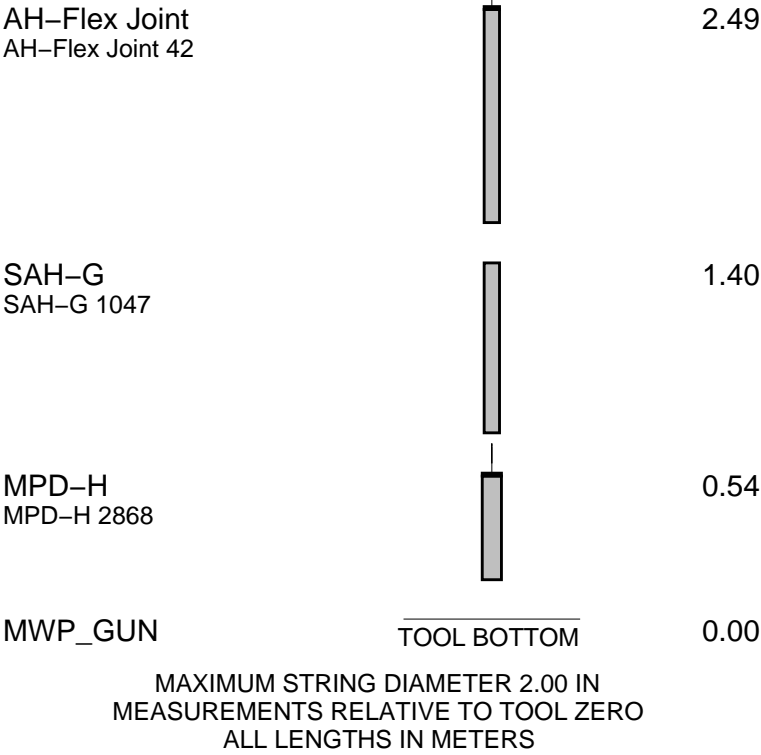
SURFACE EQUIPMENT MWPM-AA 3008	
-----------------------------------	--

DOWNHOLE EQUIPMENT

Equipment Name	Depth (m)
MH-22	7.38
AH-SWHS	6.90
AH-124 VEA 2	6.60
MWGT-AA	6.29
MWPG-AA	6.29
MWGH-AA 19	6.29
MWPT-CA	5.31
MWPH-AA 74	5.31
MWPS-AA	5.31

Additional labels and depths:

- MWPG GR at 2.41
- TOOL ZERO at the bottom of the long rectangle
- CCL, SMWP Pres, SMWP Temp, Tension are located near the bottom of the tool string.



Client: Esso Australia. Ltd

Well: A-4b

Field: Gippsland Basin

State: Victoria

Country: Australia

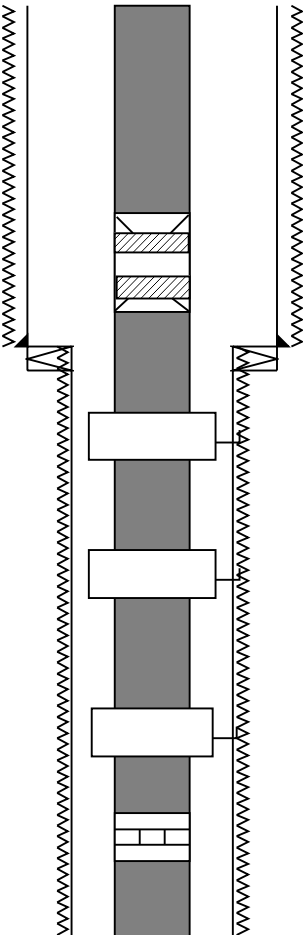
Rig Name: Flounder

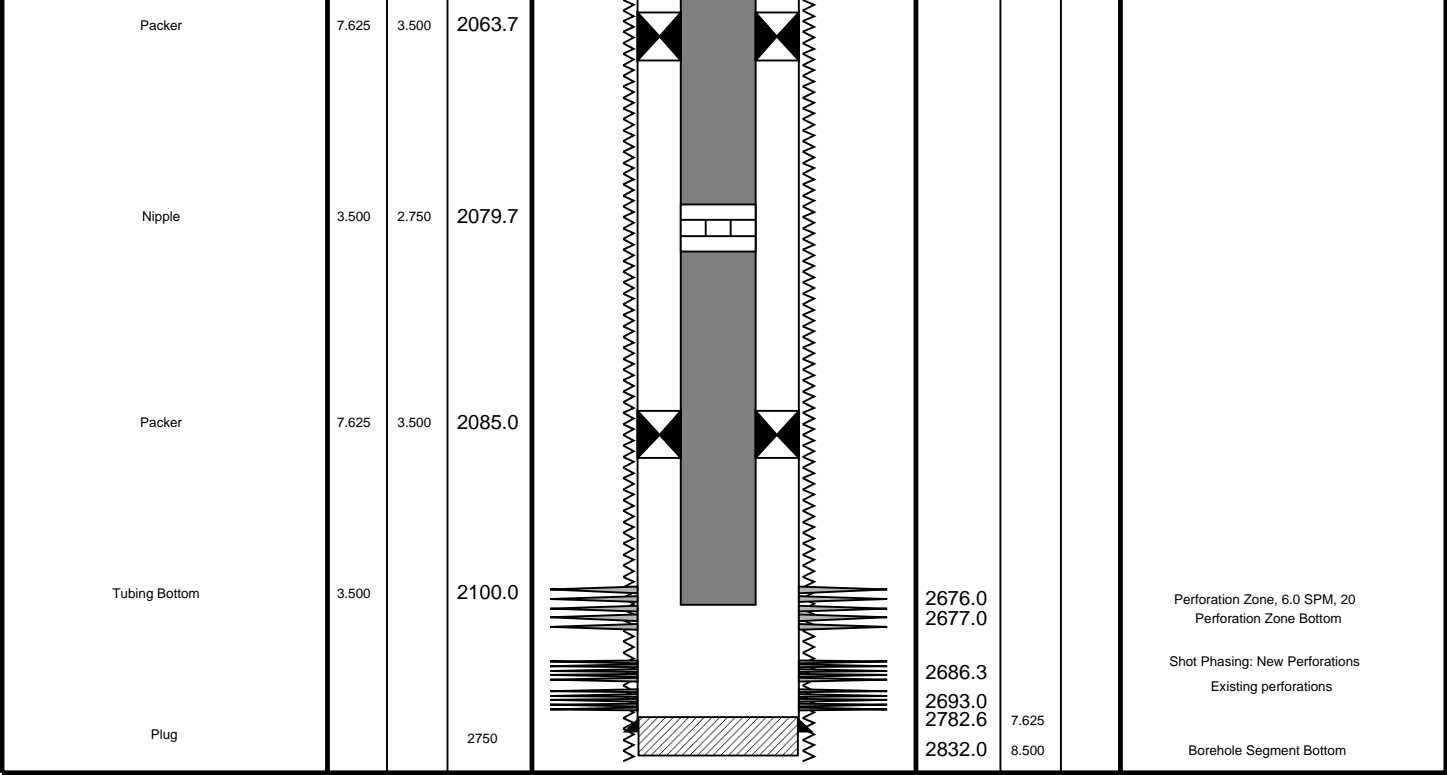
Reference Datum: Mean Sea Level

Elevation:

Drawing Date: 2/7/2006

API #:

Production String	(in) (m)			Well Schematic	(m) (in)			Casing String
	OD	ID	MD		MD	OD	ID	
Tubing	3.500		19.4		19.8	13.625 11.750		Borehole Segment Casing String
SSSV			453.5		587.2	13.625		Borehole Segment Bottom
Gas Lift Mandrel	5.968	2.920	627.1		587.2	8.500		Borehole Segment
Gas Lift Mandrel	5.968	2.920	818.1		587.2	11.750	7.625	Liner Hanger
Gas Lift Mandrel	5.680	2.920	1000.0			7.625		Casing String, 44.3 kg/m, L-80
Nipple	3.500	2.750	1016.1					



All depths are drillers depths



Operational Summary Listing

MAXIS Field Log

PERFO2 Operational Summary Listing

Device	Status	Req Depth (M)	Obs Depth (M)	Time Used
GUN1	Used	2676.0	2671.5	Fri Feb 10 09:30:18 2006



Job Events Summary

Schlumberger Job Event Summary

Time	Elapsed Time	Depth (M)	File
Rig Up Started	10-Feb-2006 7:20		
Log Pass (up)	10-Feb-2006 8:19 000:10	2736.6 – 2639.6	PERFO_056LUP
Log Pass (up)	10-Feb-2006 8:58 000:22	2732.2 – 2671.6	PERFO_064LUP
Station Log	10-Feb-2006 9:27 000:15	2671.5 – 2.2	PERFO_069LTP
Log Pass (up)	10-Feb-2006 9:39 000:08	2671.4 – 2634.2	PERFO_070LUP
Rig Down Completed	10-Feb-2006 11:00		

Schlumberger

2 1/8" Phased EnerJet
After Shoot

MAXIS Field Log

Output DLIS Files

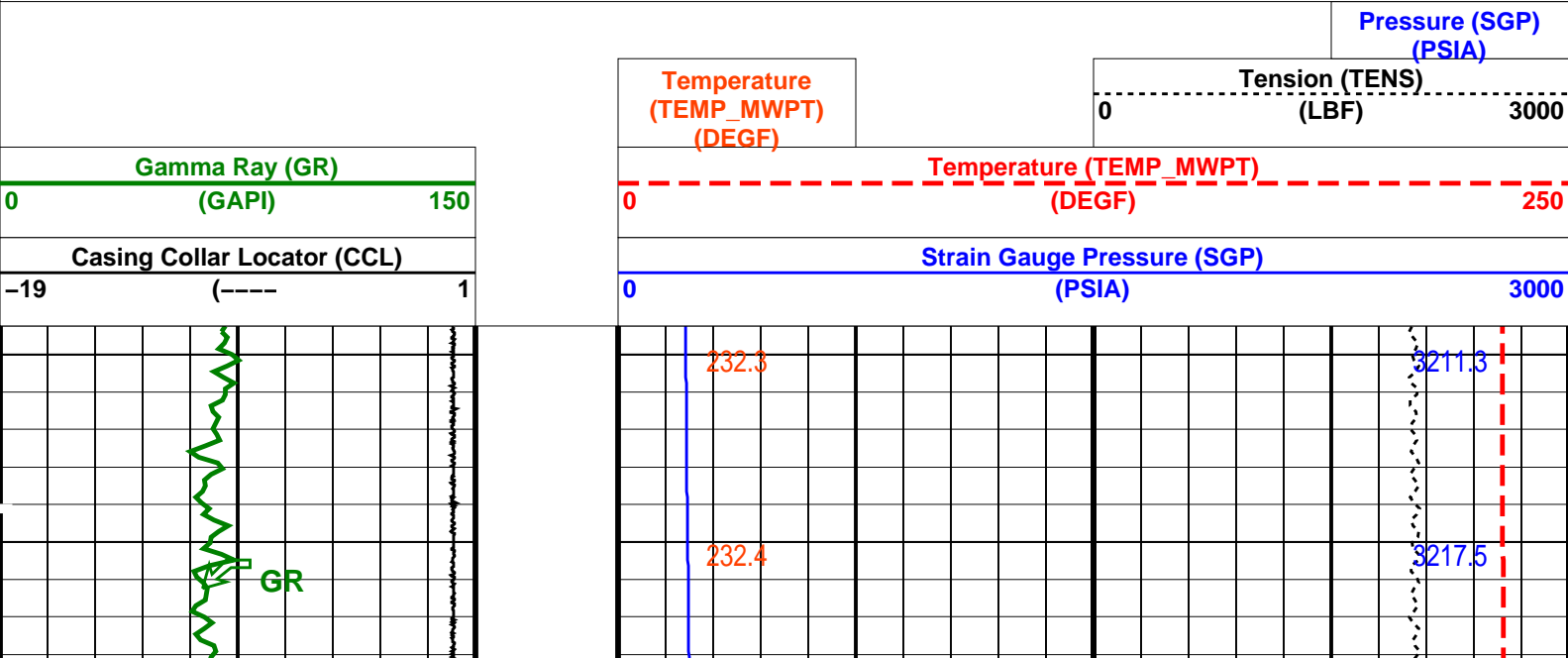
DEFAULT PERFO_070LUP FN:62 PRODUCER 10-Feb-2006 09:39 2671.4 M 2634.2 M

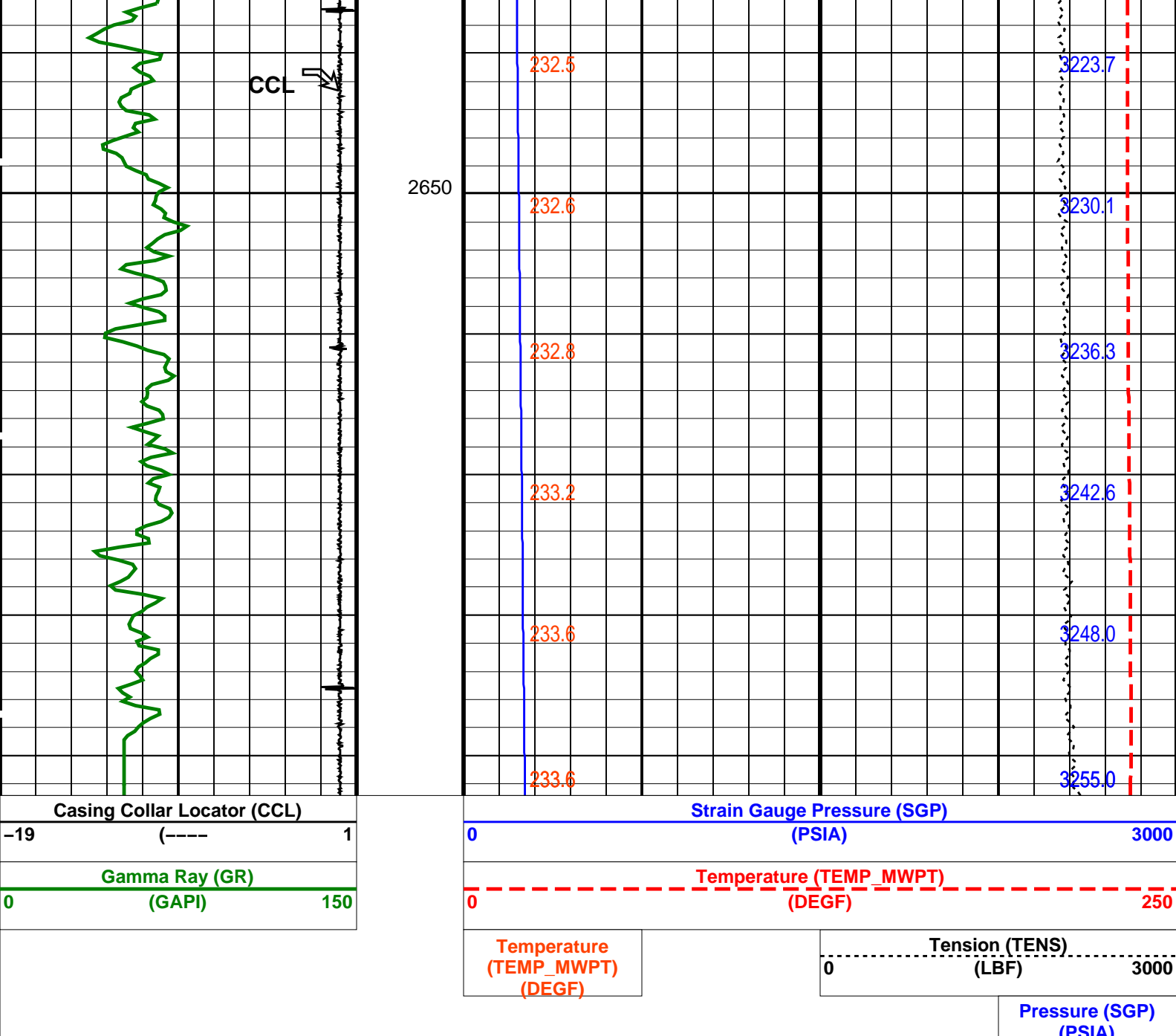
OP System Version: 13C0-300
MCM

MWP_GUN 13C0-300 MWPT-CA 13C0-300
MWGT-AA 13C0-300

PIP SUMMARY

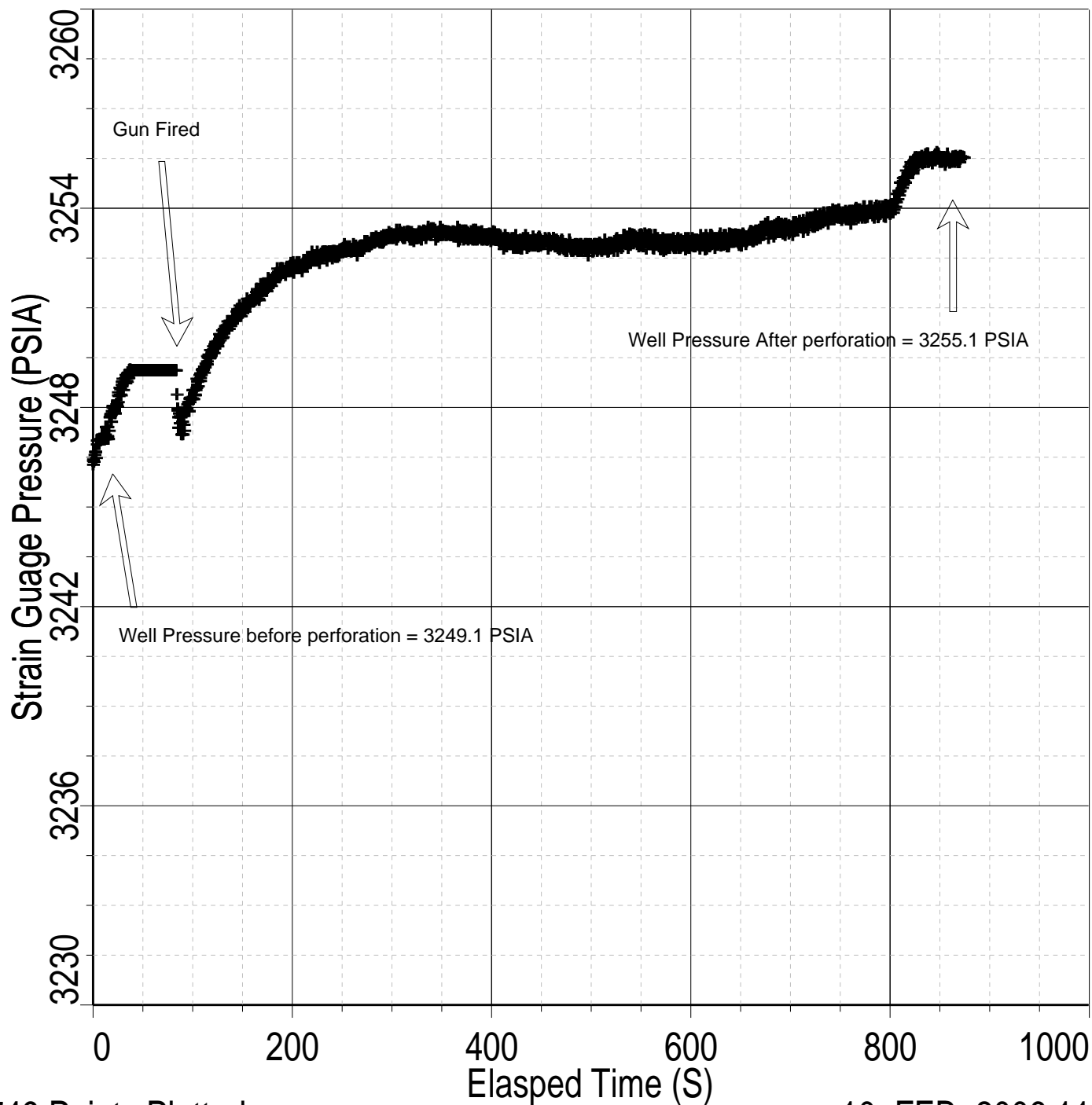
Time Mark Every 60 S





PIP SUMMARY			
Time Mark Every 60 S			
Parameters			
DLIS Name	Description	Value	
MWPT-CA: MEASUREMENT WHILE PERFORATING TOOL			
DEVI_FL_CORR	Deviation Angle for Flow Line Correction	0	DEG
FLD	Flow Line Density	1	G/C3
MWPT_NULL_SOURCE	MWPT NULL Temperature Source	TEMS	
MWPT_NULL_TEMP	MWPT NULL Temperature	0.0	DEGC
Format: MWP		Vertical Scale: 1:200	Graphics File Created: 10-Feb-2006 09:39
OP System Version: 13C0-300			
MCM			
MWP_GUN	13C0-300	MWPT-CA	13C0-300
MWGT-AA	13C0-300		
Output DLIS Files			
DEFAULT	PERFO_070LUP	FN:62	PRODUCER 10-Feb-2006 09:39

Index: 101.6 – 4544.1 M



1749 Points Plotted

10-FEB-2006 11:27

Output DLIS Files

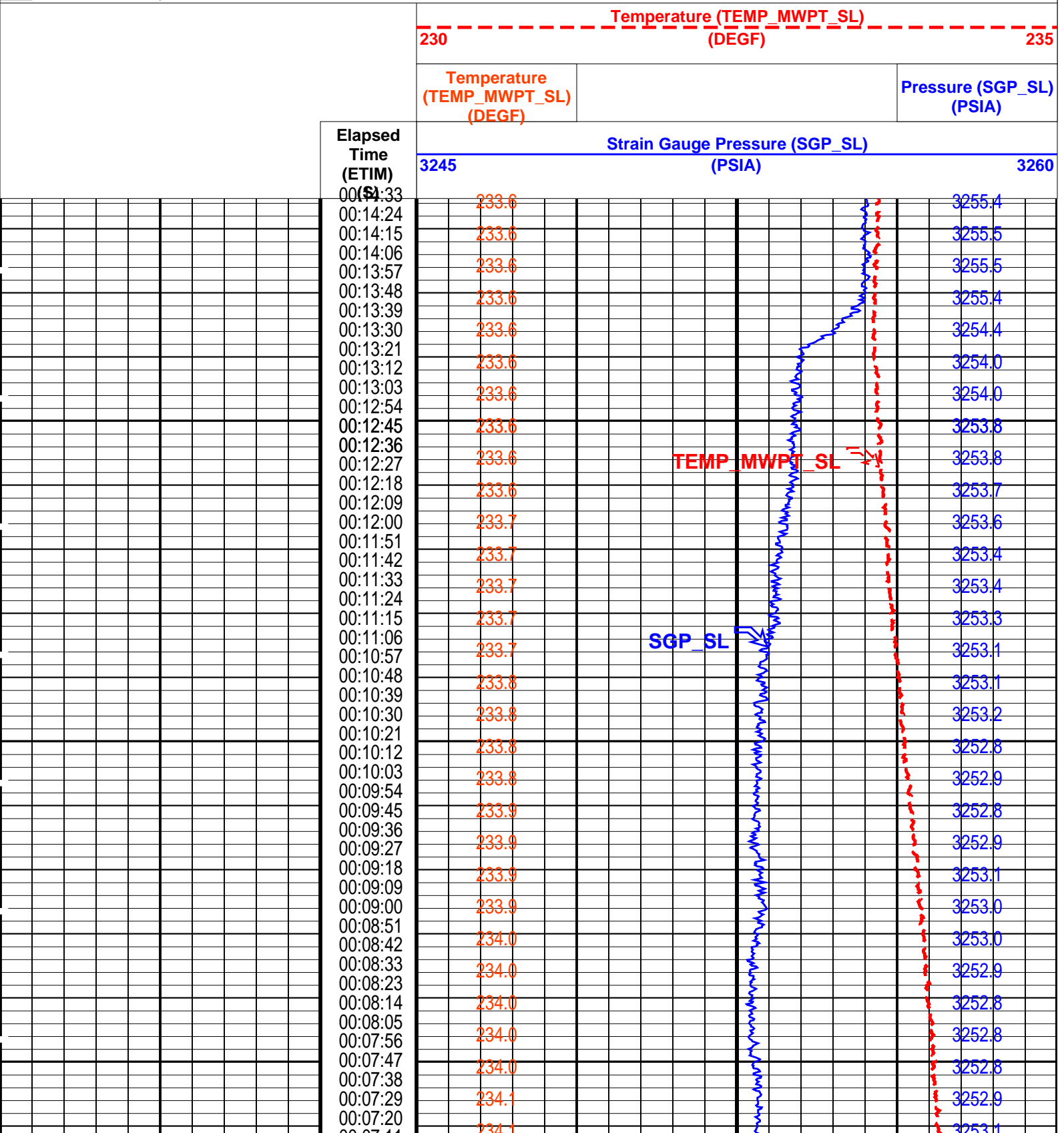
OP System Version: 13C0-300

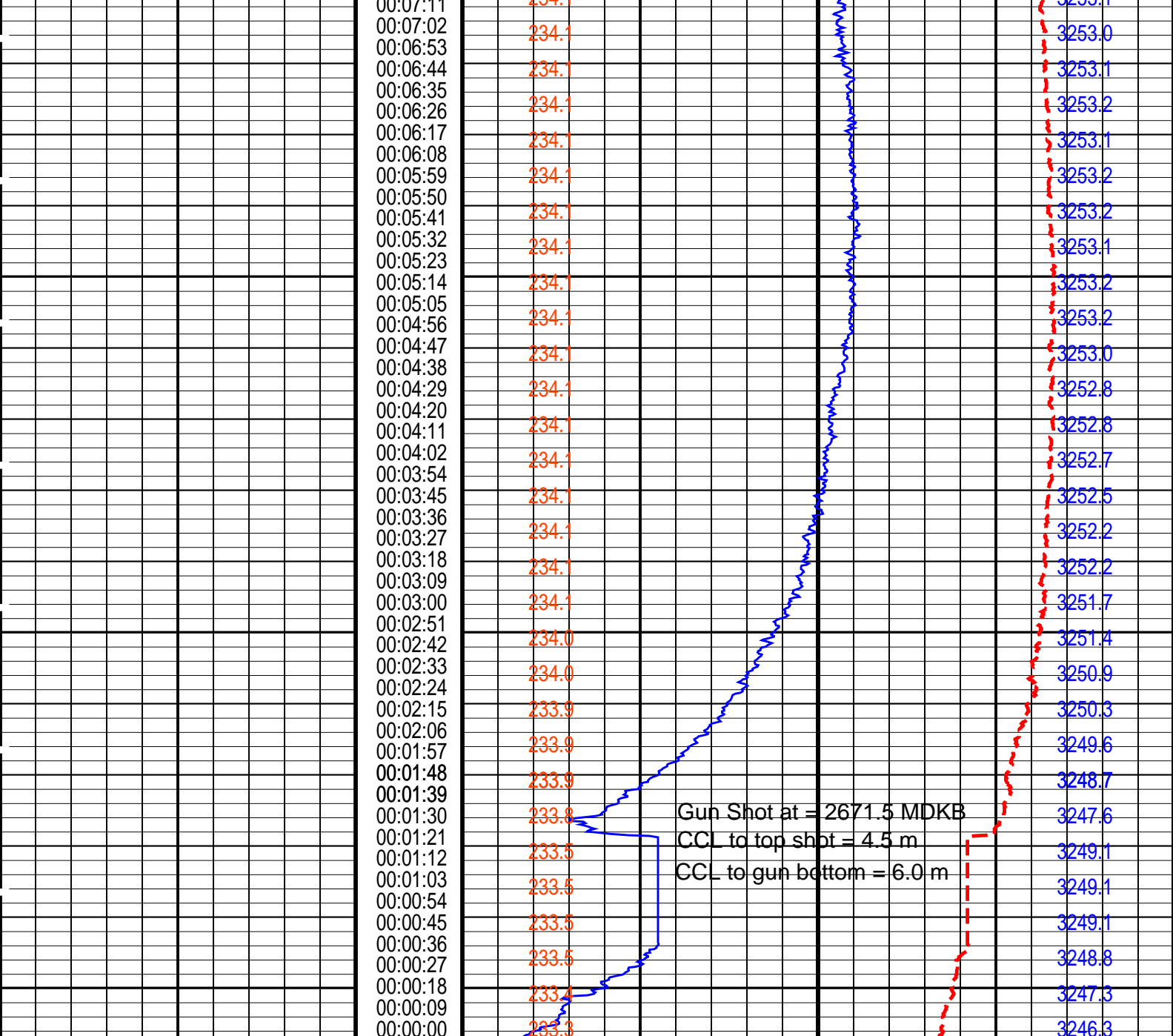
MCM

MWP_GUN 13C0-300 MWPT-CA 13C0-300
 MWGT-AA 13C0-300

PIP SUMMARY

Time Mark Every 60 S





Elapsed
Time
(ETIM)
(S)

Strain Gauge Pressure (SGP_SL)

3245

(PSIA)

3260

Temperature
(TEMP_MWPT_SL)
(DEGF)

Pressure (SGP_SL)
(PSIA)

Temperature (TEMP_MWPT_SL)
(DEGF)

230

235

PIP SUMMARY

Time Mark Every 60 S

Parameters

DLIS Name

Description

Value

MWPT-CA: MEASUREMENT WHILE PERFORATING TOOL

DEVI_FL_CORR

Deviation Angle for Flow Line Correction

0 DEG

FLD

Flow Line Density

1 G/C3

MWPT_NULL_SOURCE

MWPT NULL Temperature Source

TEMS

MWPT_NULL_TEMP

MWPT NULL Temperature

0.0 DEGC

System and Miscellaneous

PP

Playback Processing

RECOMPUTE

OP System Version: 13C0-300
MCM

MWP_GUN	13C0-300	MWPT-CA	13C0-300
MWGT-AA	13C0-300		

Input DLIS Files

DEFAULT	PERFO_069LTP	FN:61	PRODUCER	10-Feb-2006 09:27	2671.5 M	2.2 M
---------	--------------	-------	----------	-------------------	----------	-------

Output DLIS Files

DEFAULT	PERFO_072PTP	FN:64	PRODUCER	10-Feb-2006 11:08		
---------	--------------	-------	----------	-------------------	--	--



2 1/8" Phased EnerJet
Before Shoot

MAXIS Field Log

Output DLIS Files

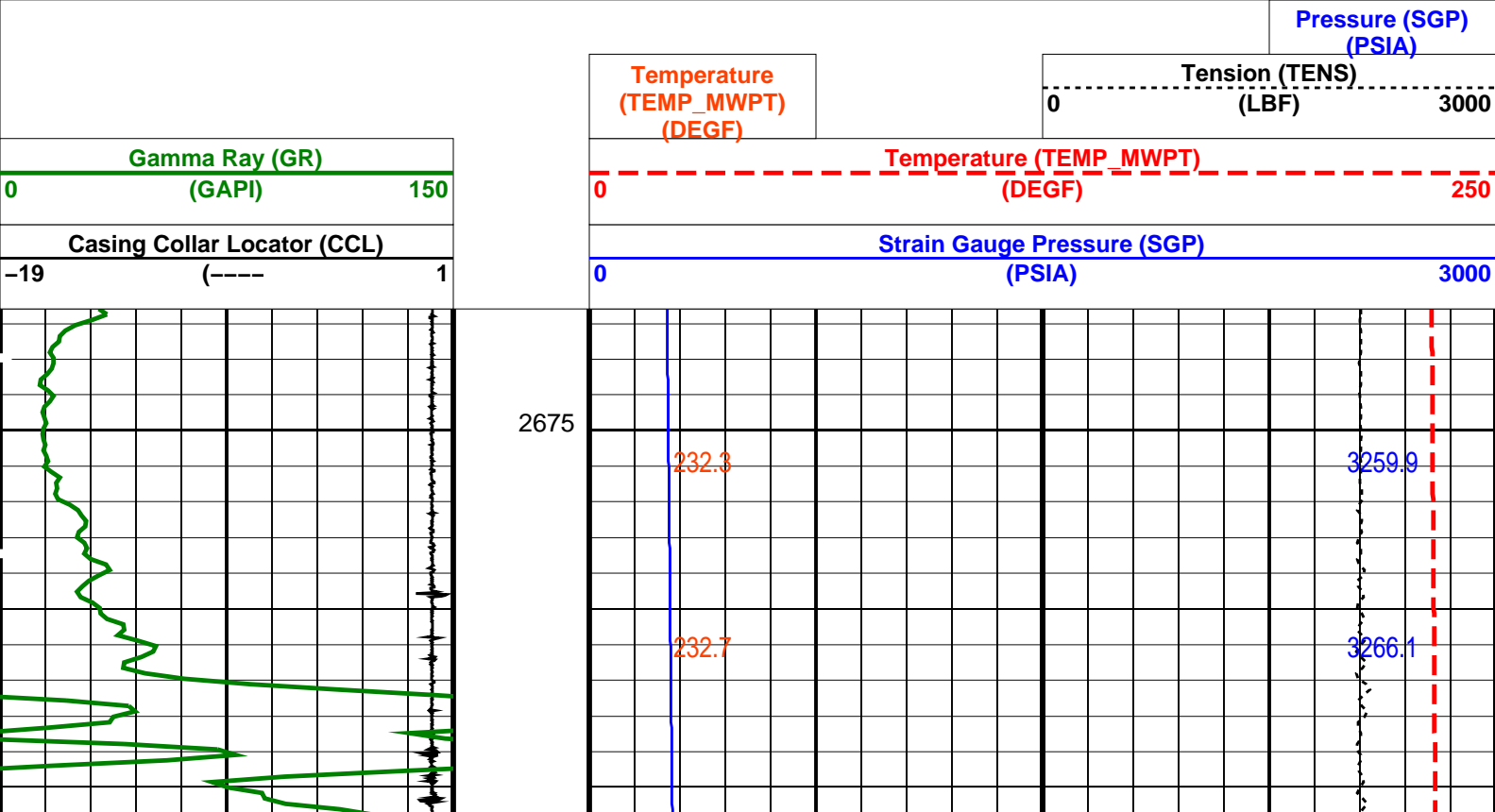
DEFAULT	PERFO_064LUP	FN:56	PRODUCER	10-Feb-2006 08:58	2732.2 M	2671.6 M
---------	--------------	-------	----------	-------------------	----------	----------

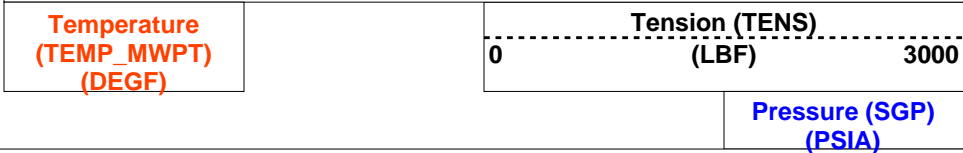
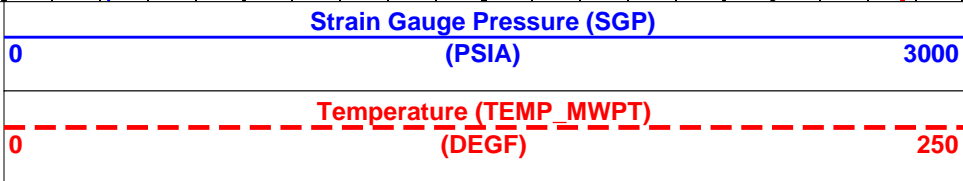
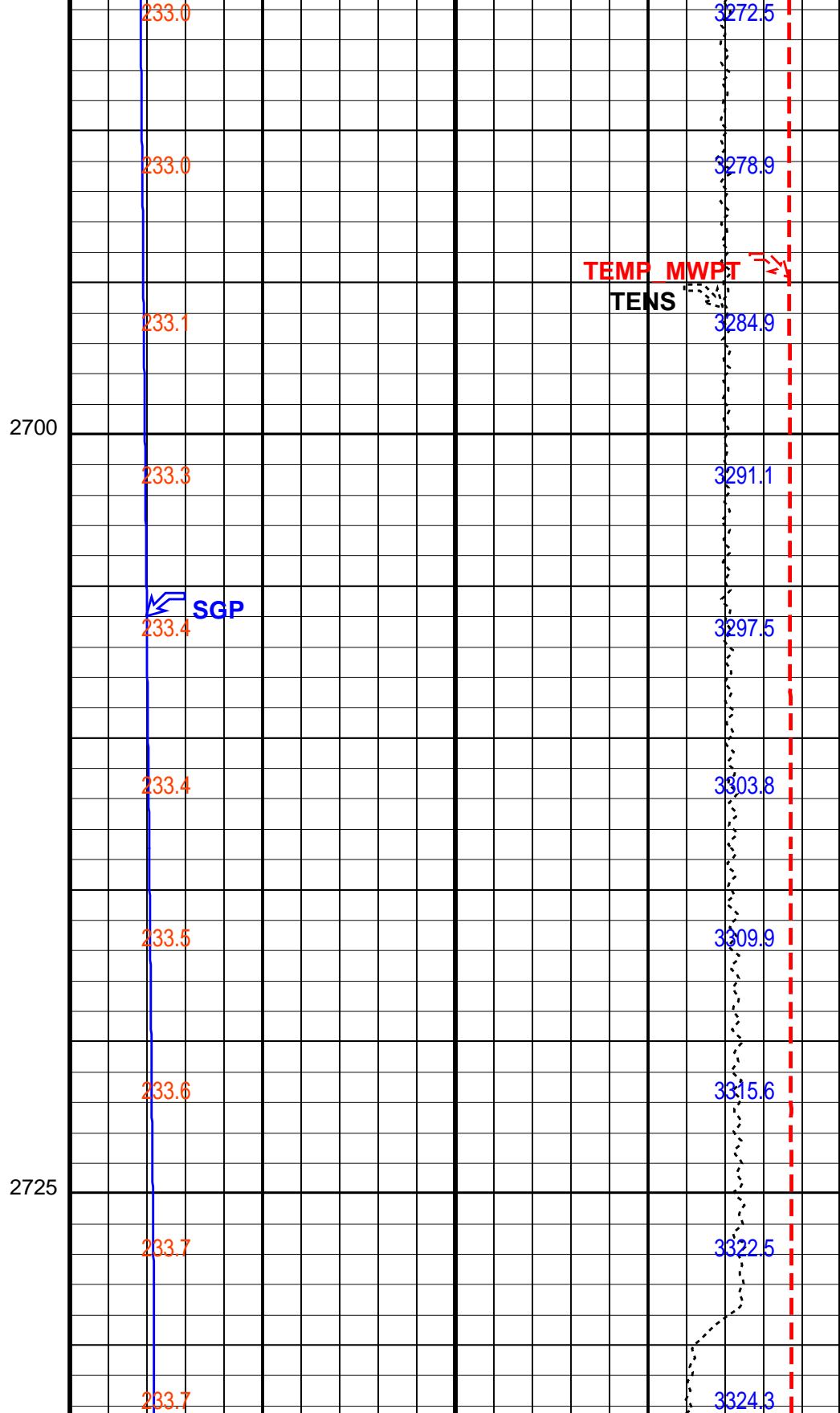
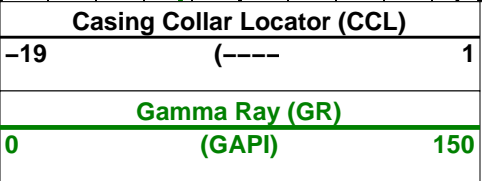
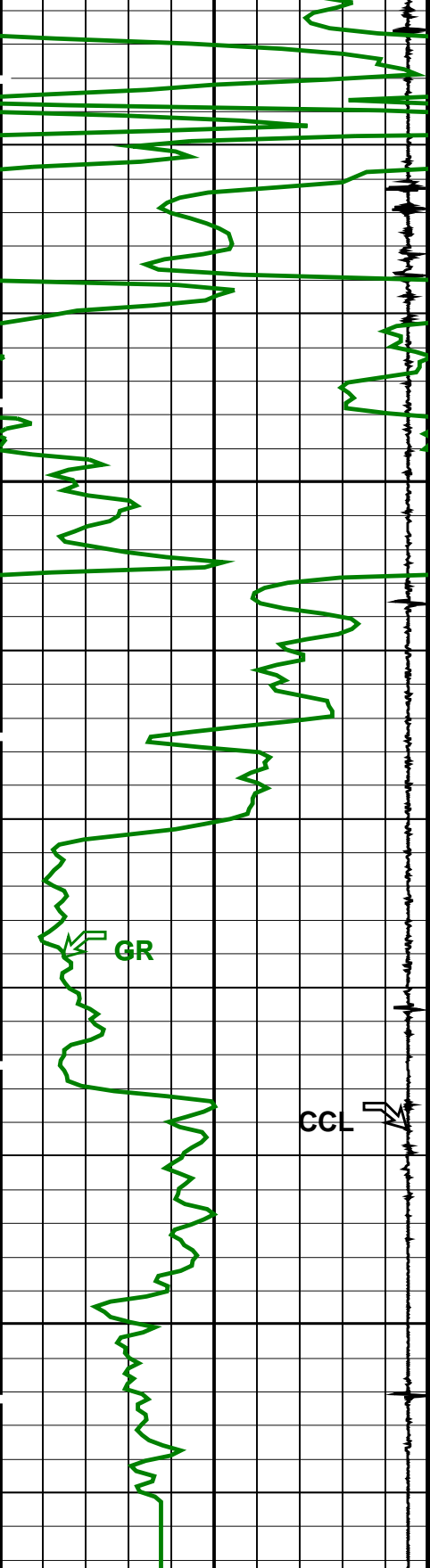
OP System Version: 13C0-300
MCM

MWP_GUN	13C0-300	MWPT-CA	13C0-300
MWGT-AA	13C0-300		

PIP SUMMARY

Time Mark Every 60 S





Parameters			
DLIS Name	Description	Value	
MWPT-CA: MEASUREMENT WHILE PERFORATING TOOL			
DEVI_FL_CORR	Deviation Angle for Flow Line Correction	0	DEG
FLD	Flow Line Density	1	G/C3
MWPT_NULL_SOURCE	MWPT NULL Temperature Source	TEMS	
MWPT_NULL_TEMP	MWPT NULL Temperature	0.0	DEGC


Format: MWP

Vertical Scale: 1:200

Graphics File Created: 10-Feb-2006 08:58

OP System Version: 13C0-300			
MCM			
MWP_GUN	13C0-300	MWPT-CA	13C0-300
MWGT-AA	13C0-300		

Output DLIS Files			
DEFAULT	PERFO_064LUP	FN:56	PRODUCER 10-Feb-2006 08:58



2 1/8" EnerJet
Correlation Pass

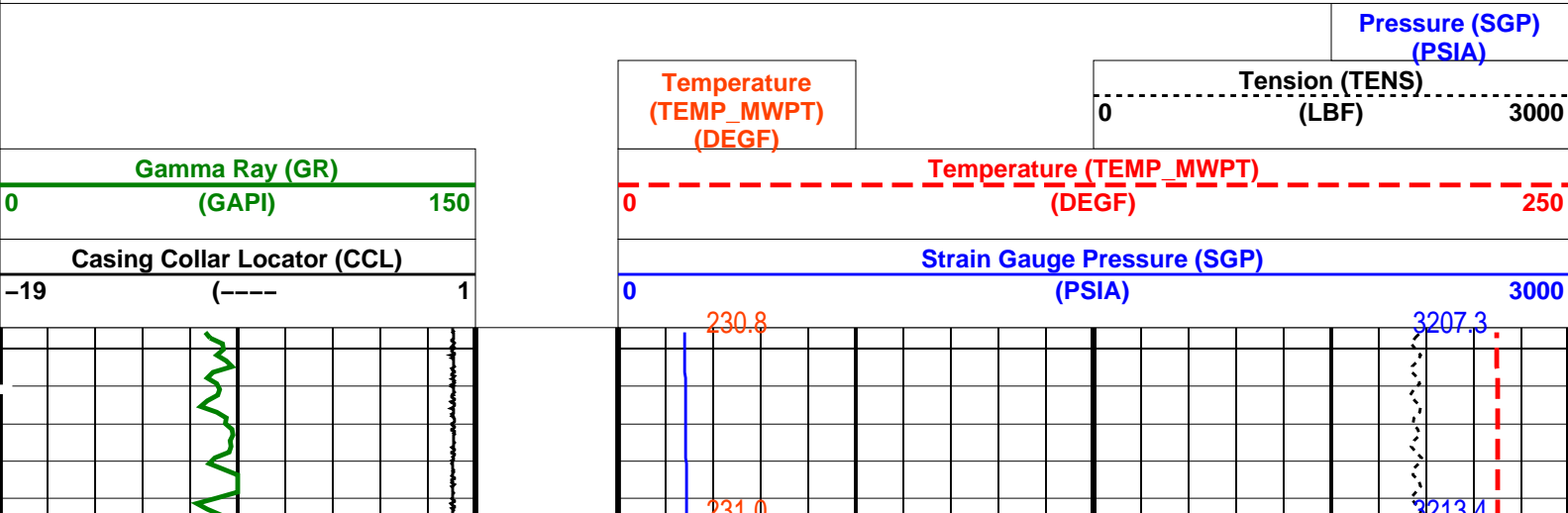
MAXIS Field Log

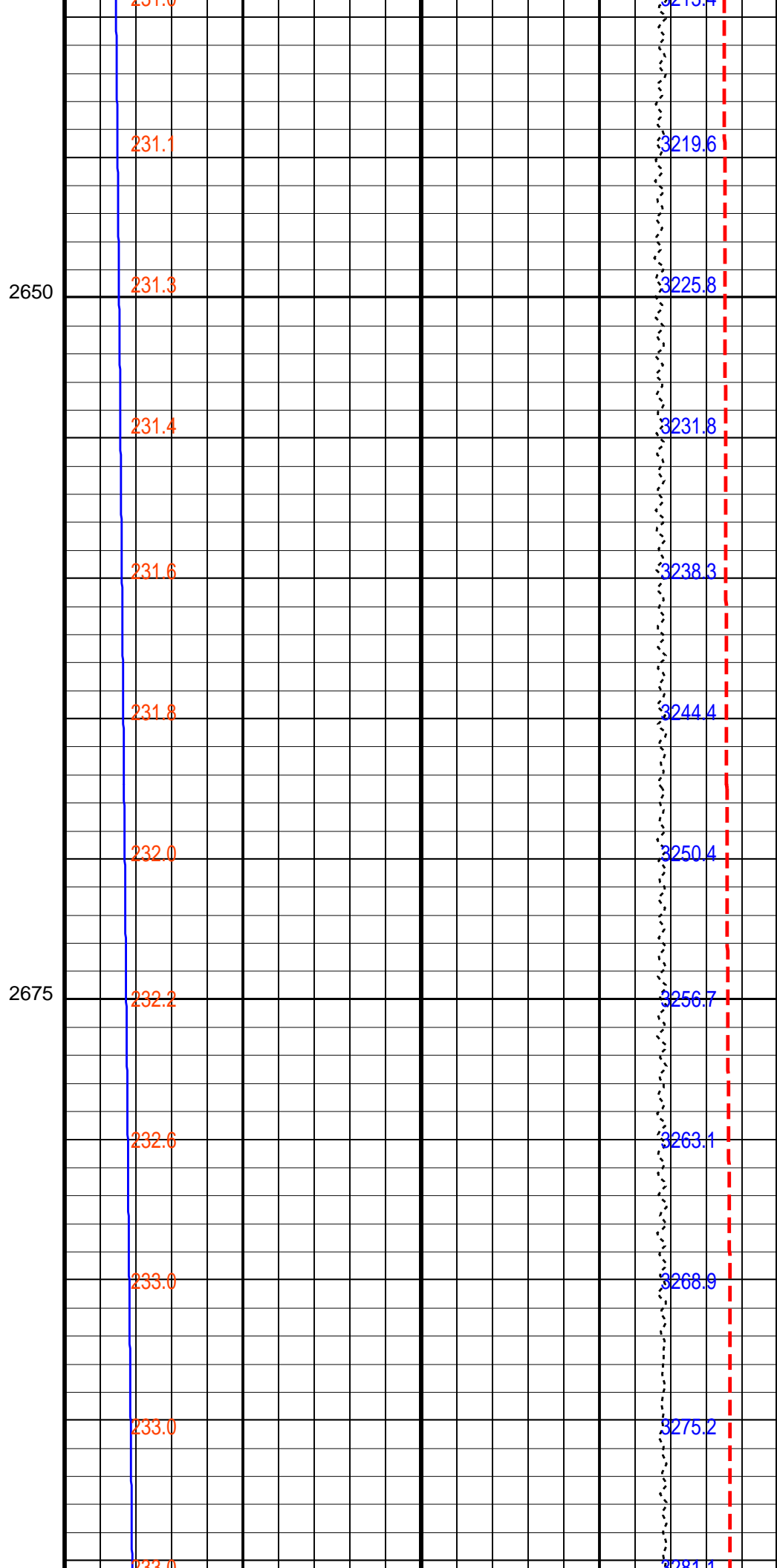
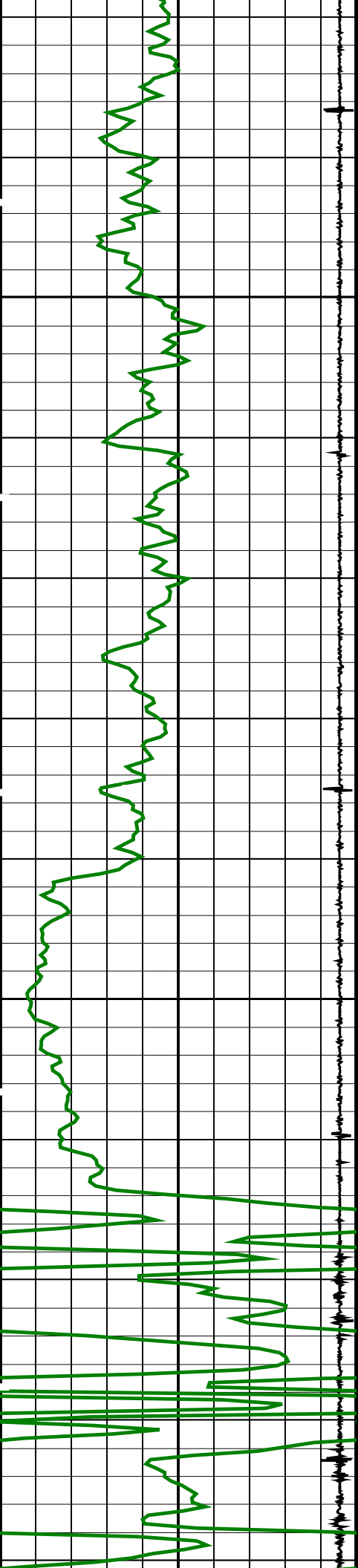
Input DLIS Files			
DEFAULT	PERFO_056LUP	FN:48	PRODUCER 10-Feb-2006 08:19 2736.6 M 2639.6 M

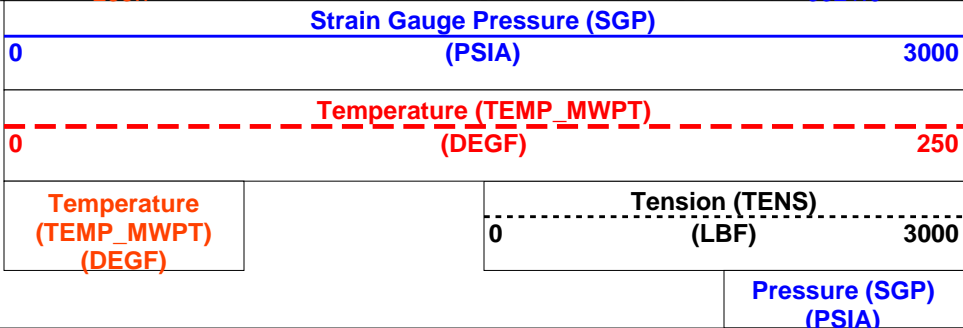
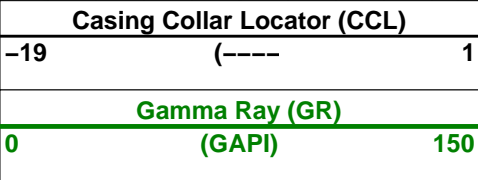
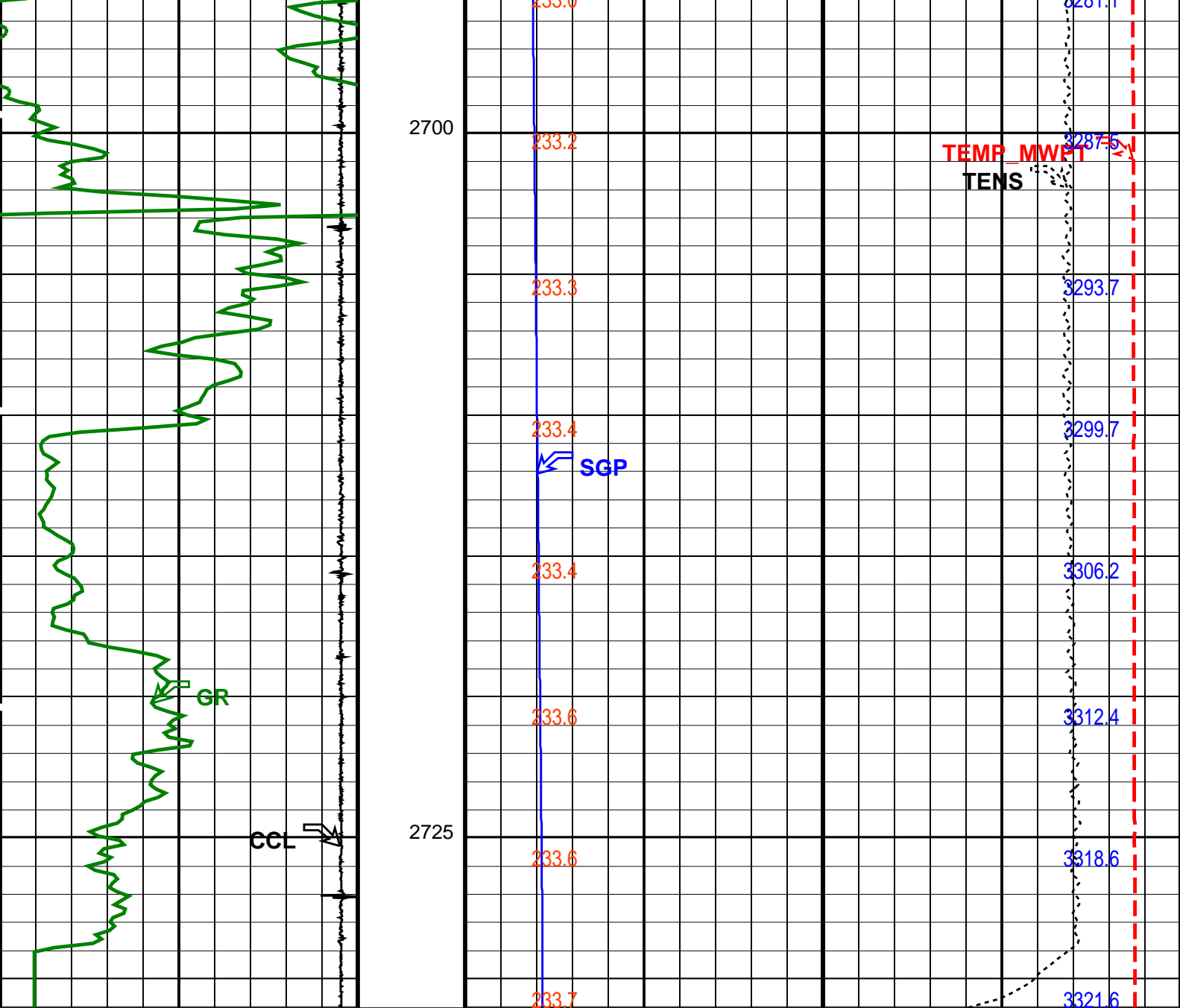
Output DLIS Files			
DEFAULT	PERFO_063PUP	FN:55	PRODUCER 10-Feb-2006 08:54 2731.0 M 2634.4 M

OP System Version: 13C0-300			
MCM			
MWP_GUN	13C0-300	MWPT-CA	13C0-300
MWGT-AA	13C0-300		

PIP SUMMARY







PIP SUMMARY

Time Mark Every 60 S

Parameters			
DLIS Name	Description	Value	
MWPT-CA: MEASUREMENT WHILE PERFORATING TOOL			
DEVI_FL_CORR	Deviation Angle for Flow Line Correction	0	DEG
FLD	Flow Line Density	1	G/C3
MWPT_NULL_SOURCE	MWPT NULL Temperature Source	TEMS	
MWPT_NULL_TEMP	MWPT NULL Temperature	0.0	DEGC
System and Miscellaneous			
DO	Depth Offset for Playback	-5.7	M
PP	Playback Processing	NORMAL	

OP System Version: 13C0-300						
MCM						
MWP_GUN	13C0-300	MWPT-CA		13C0-300		
MWGT-AA	13C0-300					
Input DLIS Files						
DEFAULT	PERFO_056LUP	FN:48	PRODUCER	10-Feb-2006 08:19	2736.6 M	2639.6 M
Output DLIS Files						
DEFAULT	PERFO_063PUP	FN:55	PRODUCER	10-Feb-2006 08:54		

Company: **Esso Australia Ltd.**

Schlumberger

Well: **A-4 b**

Field: **Flounder**

Rig : **Crane / Prod#4**

Country: **Australia**

2 1/8" Phased Enerjet

MWPT

Perforation Record