

Company: Esso Australia Ltd.

Well: A-19a
Field: Bream
Rig: Rig 453/Prod 3

Country: Australia

6" Junk Basket
4.5" HSD Record
Gamma Ray-CCL

Rig: Rig 453/Prod 3
Field: Bream
Location: Gippsland
Well: A-19a
Company: Esso Australia Ltd.

LOCATION			
Gippsland		Elev.:	K.B. 32.8 m
Basin			G.L. -60 m
Bass Strait			D.F. 32.8 m
Permanent Datum:	Mean Sea Level	Elev.:	0 m
Log Measured From:	Kelly Bushing	32.8 m	above Perm. Datum
Drilling Measured From:	Kelly Bushing		
State: Victoria	Max. Well Deviation 60 deg	Longitude 147° 46' 15"E	Latitude 38° 30' 04"S

Logging Date	4-Dec-2005	
Run Number	1-3	
Depth Driller	2804 m	
Schlumberger Depth	Not Tagged	
Bottom Log Interval	2755 m	
Top Log Interval	2630 m	
Casing Fluid Type	Inhibited Sea Water	
Salinity		
Density	8.55 ppg	
Fluid Level	0 m	
BIT/CASING/TUBING STRING		
Bit Size	8.500 in	
From		
To		
Casing/Tubing Size	7.000 in	
Weight	26 lbm/ft	
Grade	N-80	
From	0 m	
To	2799 m	
Maximum Recorded Temperatures		
Logger On Bottom	4-Dec-2005	17:20
Unit Number	Location	VEA
Recorded By	Joel Hogan	
Witnessed By	Glenn Campbell, Brian Davis	

PVT DATA			Run 1	Run 2	Run 3
Oil Density					
Water Salinity					
Gas Gravity					
Bo					
Bw					
1/Bg					
Bubble Point Pressure					
Bubble Point Temperature					
Solution GOR					
Maximum Deviation	60 deg				
CEMENTING DATA					
Primary/Squeeze	Primary				
Casing String No					
Lead Cement Type					
Volume					
Density					
Water Loss					
Additives					
Tail Cement Type					
Volume					
Density					
Water Loss					
Additives					
Expected Cement Top					
Logging Date					
Run Number					
Depth Driller					
Schlumberger Depth					
Bottom Log Interval					
Top Log Interval					
Casing Fluid Type					
Salinity					
Density					
Fluid Level					
BIT/CASING/TUBING STRING					
Bit Size					
From					
To					
Casing/Tubing Size					
Weight					
Grade					
From					
To					
Maximum Recorded Temperatures					
Logger On Bottom	Time				
Unit Number	Location				
Recorded By					
Witnessed By					

DEPTH SUMMARY LISTING

Depth System Equipment

Depth Measuring Device		Tension Device		Logging Cable	
Type:	IDW-H	Type:	CMTD-B/A	Type:	7-46V-XS
Serial Number:	796	Serial Number:	1721	Serial Number:	72433
Calibration Date:	09-Jun-05	Calibration Date:	15-Feb-05	Length:	5747.00 M
Calibrator Serial Number:	1009	Calibrator Serial Number:	1051		
Calibration Cable Type:	7-46V-XS	Calibration Gain:	0.81	Conveyance Method:	Wireline
Wheel Correction 1:	-6	Calibration Offset:	217.00	Rig Type:	Offshore_Fixed
Wheel Correction 2:	-6				

Depth Control Parameters	
--------------------------	--

Log Sequence:	Subsequent Trip To the Well
Reference Log Name:	Precision– Dual Laterolog–gR–Density–Neutro
Reference Log Run Number:	one
Reference Log Date:	30–Nov–05

Depth Control Remarks

- | | |
|----|--|
| 1. | |
| 2. | |
| 3. | |
| 4. | |
| 5. | |
| 6. | |

DISCLAIMER

THE USE OF AND RELIANCE UPON THIS RECORDED-DATA BY THE HEREIN NAMED COMPANY (AND ANY OF ITS AFFILIATES, PARTNERS, REPRESENTATIVES, AGENTS, CONSULTANTS AND EMPLOYEES) IS SUBJECT TO THE TERMS AND CONDITIONS AGREED UPON BETWEEN SCHLUMBERGER AND THE COMPANY, INCLUDING: (a) RESTRICTIONS ON USE OF THE RECORDED-DATA; (b) DISCLAIMERS AND WAIVERS OF WARRANTIES AND REPRESENTATIONS REGARDING COMPANY'S USE OF AND RELIANCE UPON THE RECORDED-DATA; AND (c) CUSTOMER'S FULL AND SOLE RESPONSIBILITY FOR ANY INFERENCE DRAWN OR DECISION MADE IN CONNECTION WITH THE USE OF THIS RECORDED-DATA.

OTHER SERVICES1
OS1: None
OS2:
OS3:
OS4:
OS5:

REMARKS: RUN NUMBER 1
Log Correlated to PRECISION Dual Laterolog-GR-Density-Neutron
Log Dated 30-Nov-2005
Objective:
RIH with Junk Basket GR-CCL to 2740m MDRT with 6" Gauge ring,
Perforate intervals 2709.5m-2711mMDRT and 2690.5-2692.5mMDRT
with 4.5" HSD 12spf 30deg Phasing Guns.
Charge type: 34JL Ultrajet HMX

OTHER SERVICES2
OS1:
OS2:
OS3:
OS4:
OS5:

[illegible]

REMARKS: RUN NUMBER 1
Log Correlated to PRECISION Dual Laterolog, CB, Density, Neutron

Log Correlated to PRECISION Dual Laterolog-GR-Density-Neutron
Log Dated 30-Nov-2005

Objective:
Build a 1000-gram Packet of 2000 GGLs to 6740x MBRT with 2" Compression

RIH with Junk Basket GR-CCL to 2740m MDRT with 6" Gauge ring, Perforate intervals 2709.5m-2711mMDRT and 2690.5-2692.5mMDRT

with 4.5" HSD 12spf 30deg Phasing Guns.

Charge type: 34JL Ultrajet HMX

CCL to top shot = 2.17m on both guns.					
Crew: John Light, Nathan Simmons (nights)					
Kevin Kerr, Brendan Flynn (days)					
Performed By Schlumberger.					
<div style="text-align: center;">RUN 1</div> <div> <div>SERVICE ORDER #:</div> <div>PROGRAM VERSION:</div> <div>FLUID LEVEL:</div> </div> <div> <div>L0501F465</div> <div>13C0-300</div> <div>0 m</div> </div>			<div style="text-align: center;">RUN 2</div> <div> <div>SERVICE ORDER #:</div> <div>PROGRAM VERSION:</div> <div>FLUID LEVEL:</div> </div>		
LOGGED INTERVAL	START	STOP	LOGGED INTERVAL	START	STOP







[illegible]

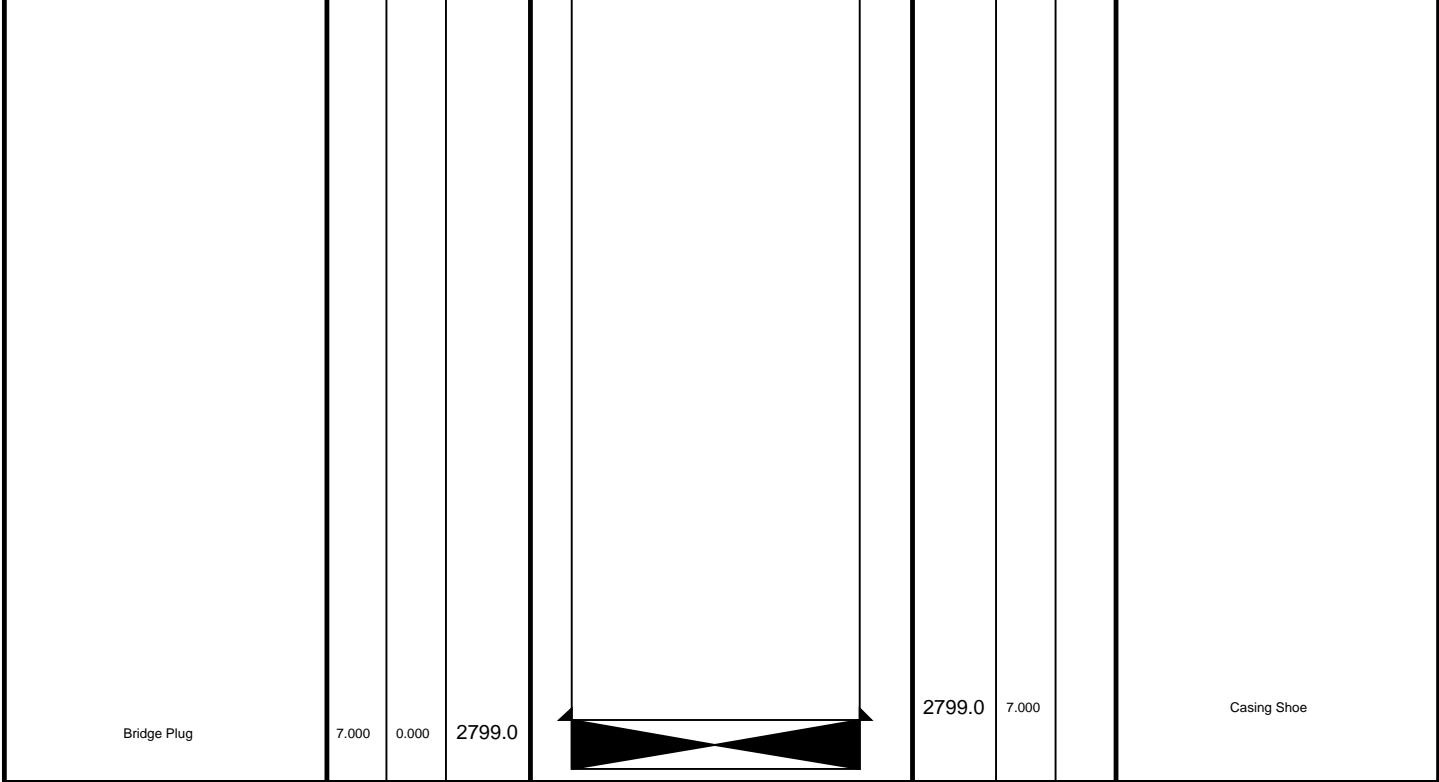
SURFACE EQUIPMENT	
1	
2	
3	
4	
5	
6	
7	
8	
9	
10	
11	
12	
13	
14	
15	
16	
17	
18	
19	
20	
21	
22	
23	
24	
25	
26	
27	
28	
29	
30	
31	
32	
33	
34	
35	
36	
37	
38	
39	
40	
41	
42	
43	
44	
45	
46	
47	
48	
49	
50	
51	
52	
53	
54	
55	
56	
57	
58	
59	
60	
61	
62	
63	
64	
65	
66	
67	
68	
69	
70	
71	
72	
73	
74	
75	
76	
77	
78	
79	
80	
81	
82	
83	
84	
85	
86	
87	
88	
89	
90	
91	
92	
93	
94	
95	
96	
97	
98	
99	
100	

SURFACE EQUIPMENT	
WITM (SHM) 969	

DOWNHOLE EQUIPMENT

Equipment Name	Depth (ft)	Equipment Type
PEH-A PEH-A 30	5.05	Probe Head
AH-64 AH-64 2926	4.50	Acoustic Head
PGGT-D PGGT-D 313	4.09	Gamma Ray
Casing Co Tension	TOOL ZERO	Casing Tension

DOWNHOLE EQUIPMENT			
PEH-A PEH-A 30			7.31
AH-64 AH-64 2926			6.76
PGGT-D PGGC PGGH-D 313	Gamma Ray		6.36
		1.07	
	Casing Co Tension	TOOL ZERO	
AH-83 AH-83 500			4.57
AH-WPSA-A AH-WPSA-A 25			4.11
AH-Firing Head AH-Firing Head			3.35





Operational Summary Listing

MAXIS Field Log

PERFO2 Operational Summary Listing

Device	Status	Req Depth (M)	Obs Depth (M)	Time Used
GUN1	Used	2709.5	2709.5	Sun Dec 04 23:55:30 2005

PERFO2 Operational Summary Listing

Device	Status	Req Depth (M)	Obs Depth (M)	Time Used
GUN1	Used	2690.5	2690.5	Mon Dec 05 04:28:36 2005



4.5" HSD Gun 2
Shooting Pass

MAXIS Field Log

Company: Esso Australia Ltd. Well: A-19a

Output DLIS Files

DEFAULT PERFO_020LUP FN:19 PRODUCER 05-Dec-2005 04:23 2730.7 M 2659.7 M

OP System Version: 13C0-300
MCM

SHM_GUN 13C0-300 PGGT-D 13C0-300

PIP SUMMARY

Time Mark Every 60 S

Casing Collar Locator (CCL)

Cable Speed (CS)

0 (M/HR) 5000

Gamma Ray (GR)

(GAPI)

Shifted Casing Collar Locator (SCCL)

Tension (TENS)

(LBF)

6000

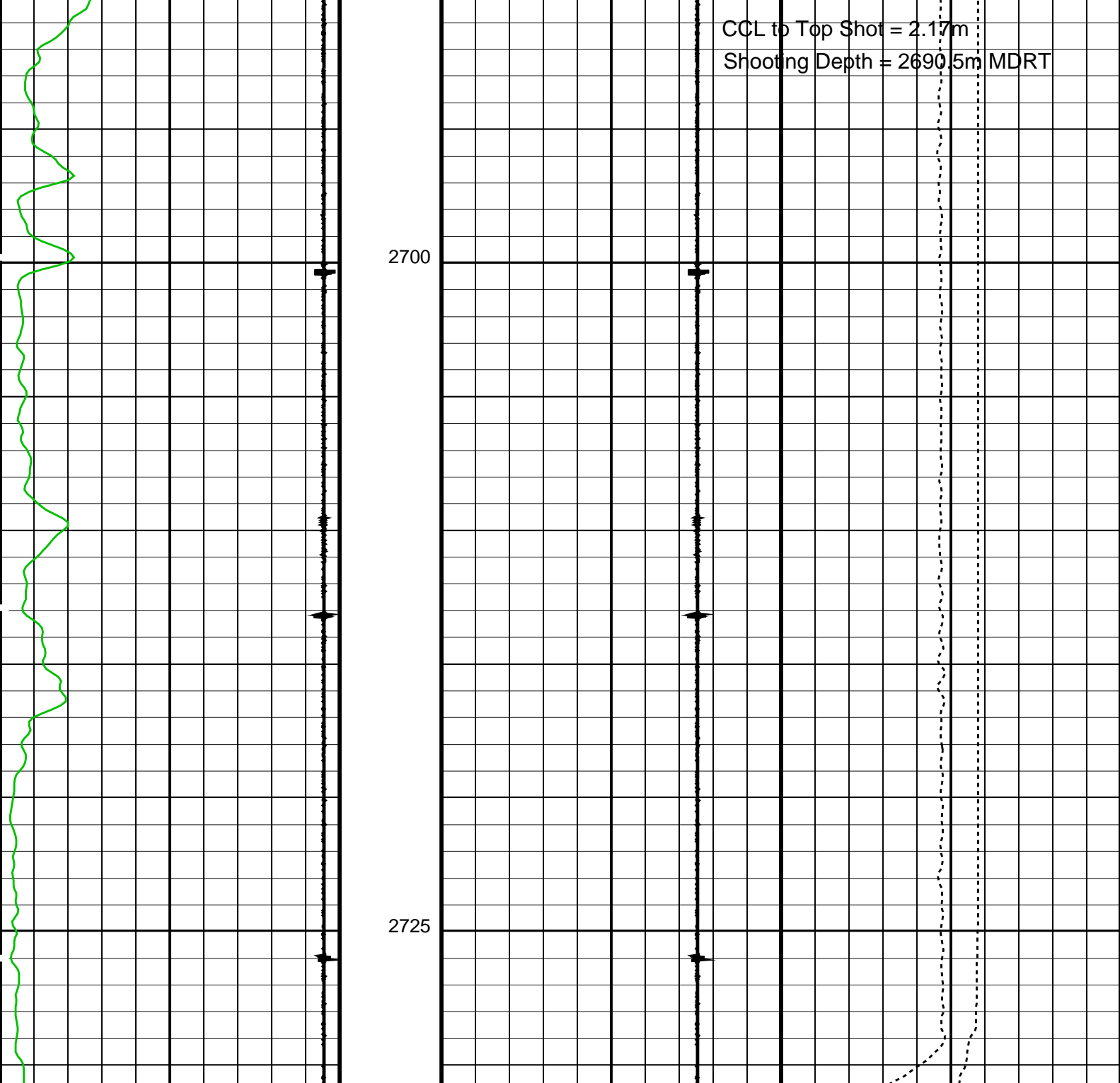
2675

TENS

SCCL

CS

CCL Stop depth = 2688.3m MDRT



CCL to Top Shot = 2.17m
Shooting Depth = 2690.5m MDRT

Gamma Ray (GR)
(GAPI) 0 200

Casing Collar Locator (CCL)
(----) -19 1

Shifted Casing Collar Locator (SCCL)
-10 (----) 10 0

Tension (TENS)
(LBF) 0 6000

Cable Speed (CS)
(M/HR) 0 5000

PIP SUMMARY

Time Mark Every 60 S

Format: PERFO Vertical Scale: 1:200 Graphics File Created: 05-Dec-2005 04:23

OP System Version: 13C0-300
MCM

SHM_GUN 13C0-300 PGGT-D 13C0-300

Output DLIS Files

DEFAULT PERFO_020LUP FN:19 PRODUCER 05-Dec-2005 04:23



4.5" HSD Gun
Correlation Pass Gun 2

MAXIS Field Log

Company: Esso Australia Ltd. Well: A-19a

Output DLIS Files

DEFAULT PERFO_019LUP FN:18 PRODUCER 05-Dec-2005 04:14

OP System Version: 13C0-300
MCM

SHM_GUN 13C0-300 PGGT-D 13C0-300

PIP SUMMARY

Time Mark Every 60 S

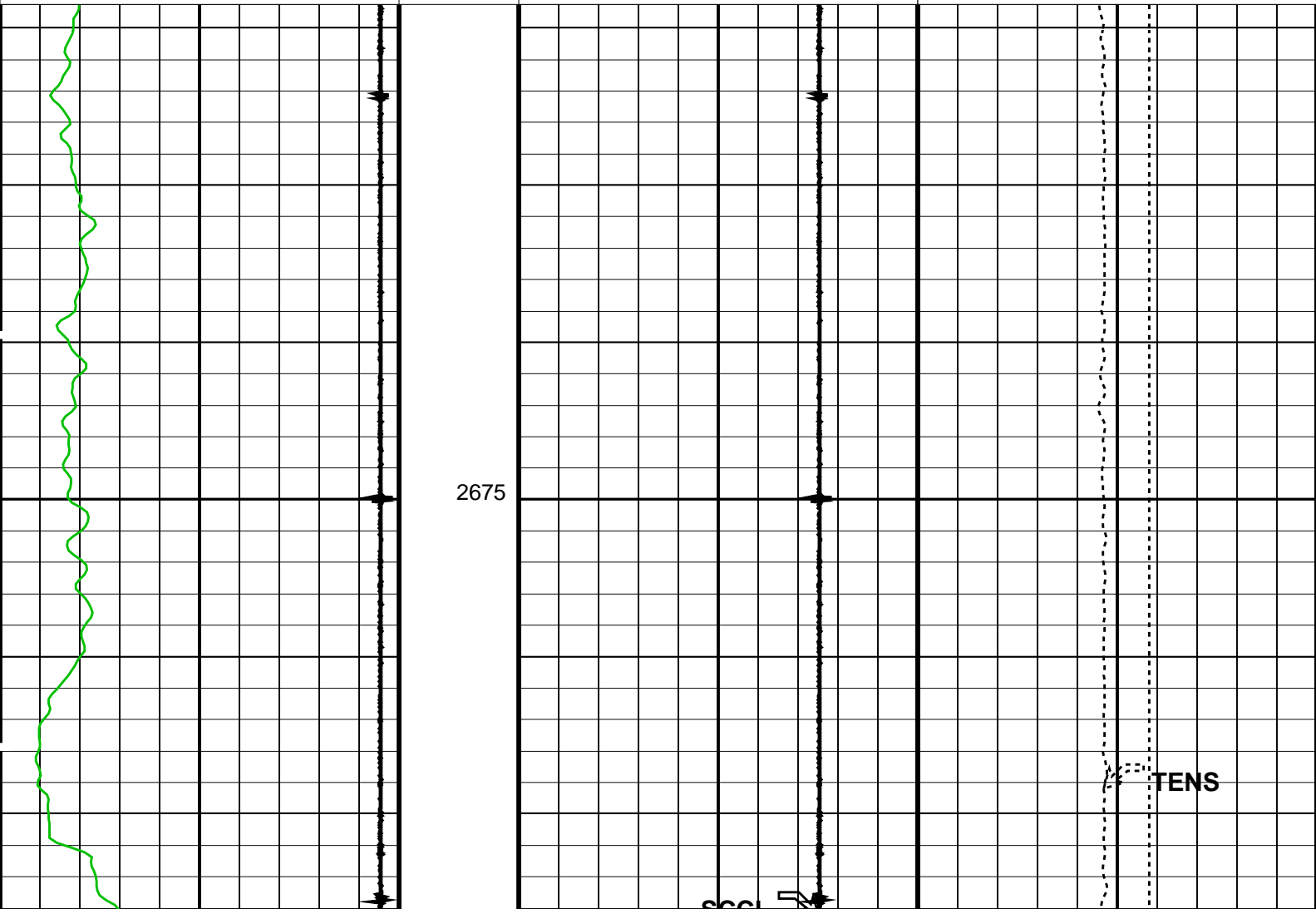
Casing Collar Locator (CCL)

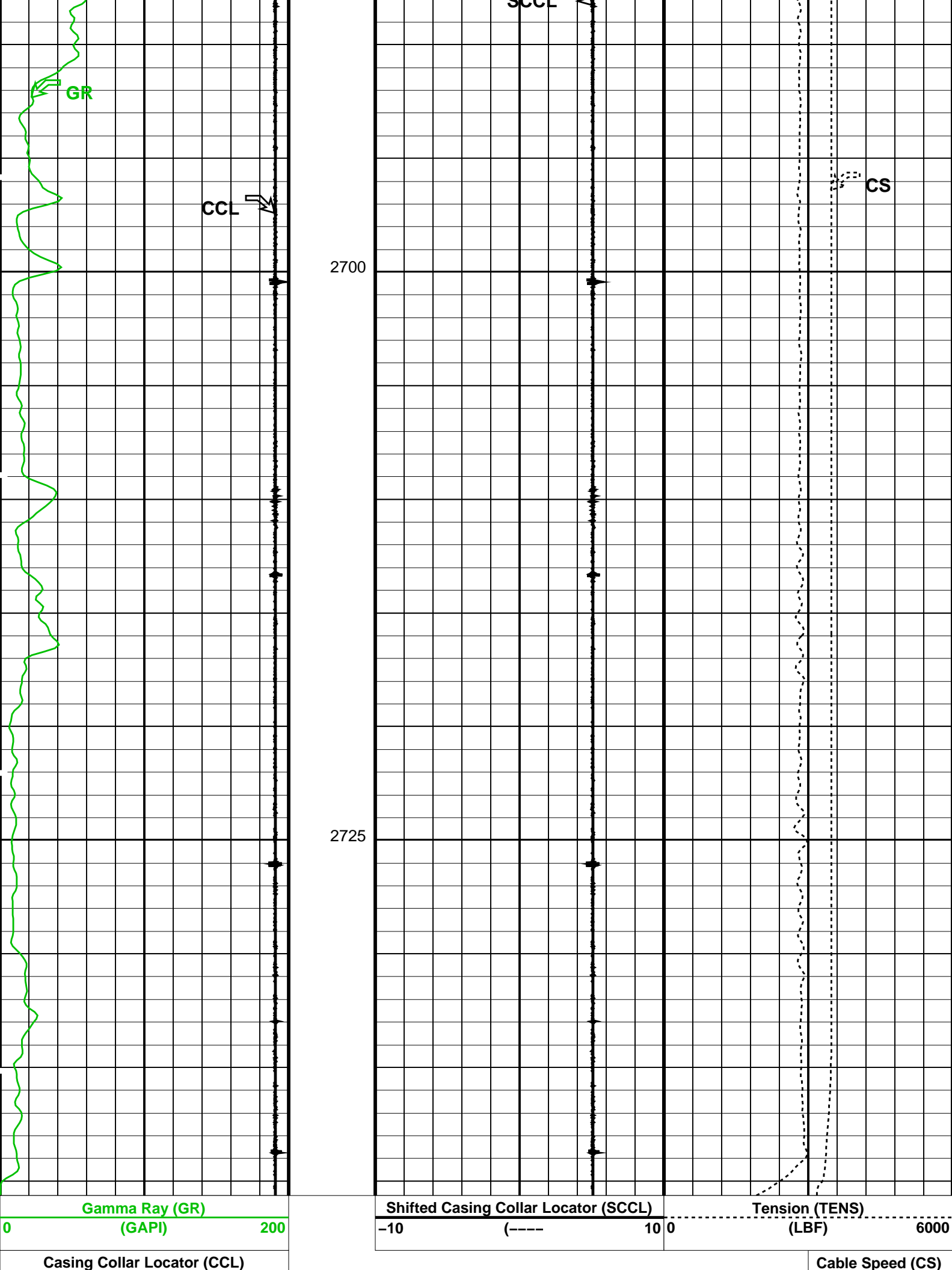
Cable Speed (CS)
0 (M/HR) 5000

Gamma Ray (GR)
(GAPI) 200

Shifted Casing Collar Locator (SCCL)
-10 (----) 10 0

Tension (TENS)
(LBF) 6000





PIP SUMMARY

Time Mark Every 60 S

Format: PERFO Vertical Scale: 1:200

Graphics File Created: 05-Dec-2005 04:14

OP System Version: 13C0-300

MCM

SHM_GUN 13C0-300 PGGT-D 13C0-300

Output DLIS Files

DEFAULT PERFO_019LUP FN:18 PRODUCER 05-Dec-2005 04:14

Schlumberger

4.5" HSD Gun 1
Shooting Pass

MAXIS Field Log

Company: Esso Australia Ltd.

Well: A-19a

Output DLIS Files

DEFAULT PERFO_016LUP FN:15 PRODUCER 04-Dec-2005 23:43 2741.1 M 2660.4 M

OP System Version: 13C0-300

MCM

SHM_GUN 13C0-300 PGGT-D 13C0-300

PIP SUMMARY

Time Mark Every 60 S

Casing Collar Locator (CCL)

-19

(----

1

Cable Speed (CS)

0

(M/HR) 5000

Gamma Ray (GR)

(GAPI)

0

200

Shifted Casing Collar Locator (SCCL)

(----

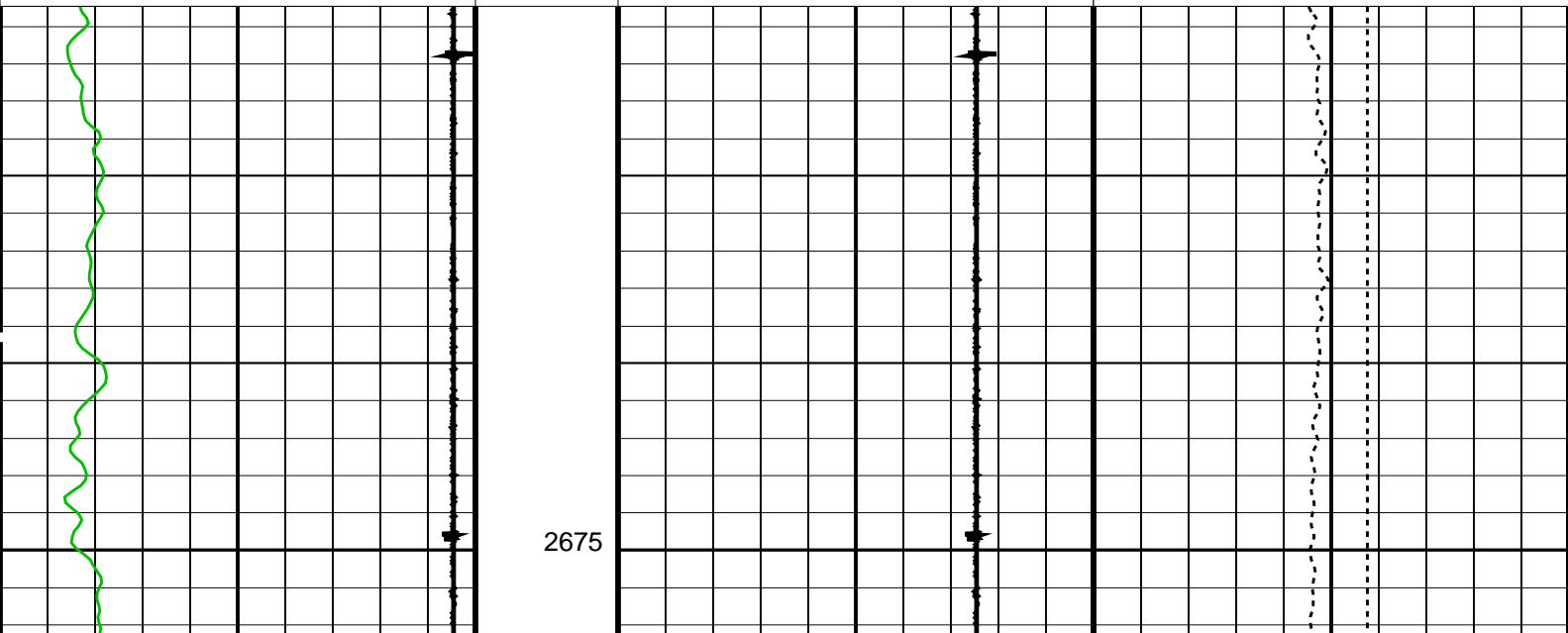
10

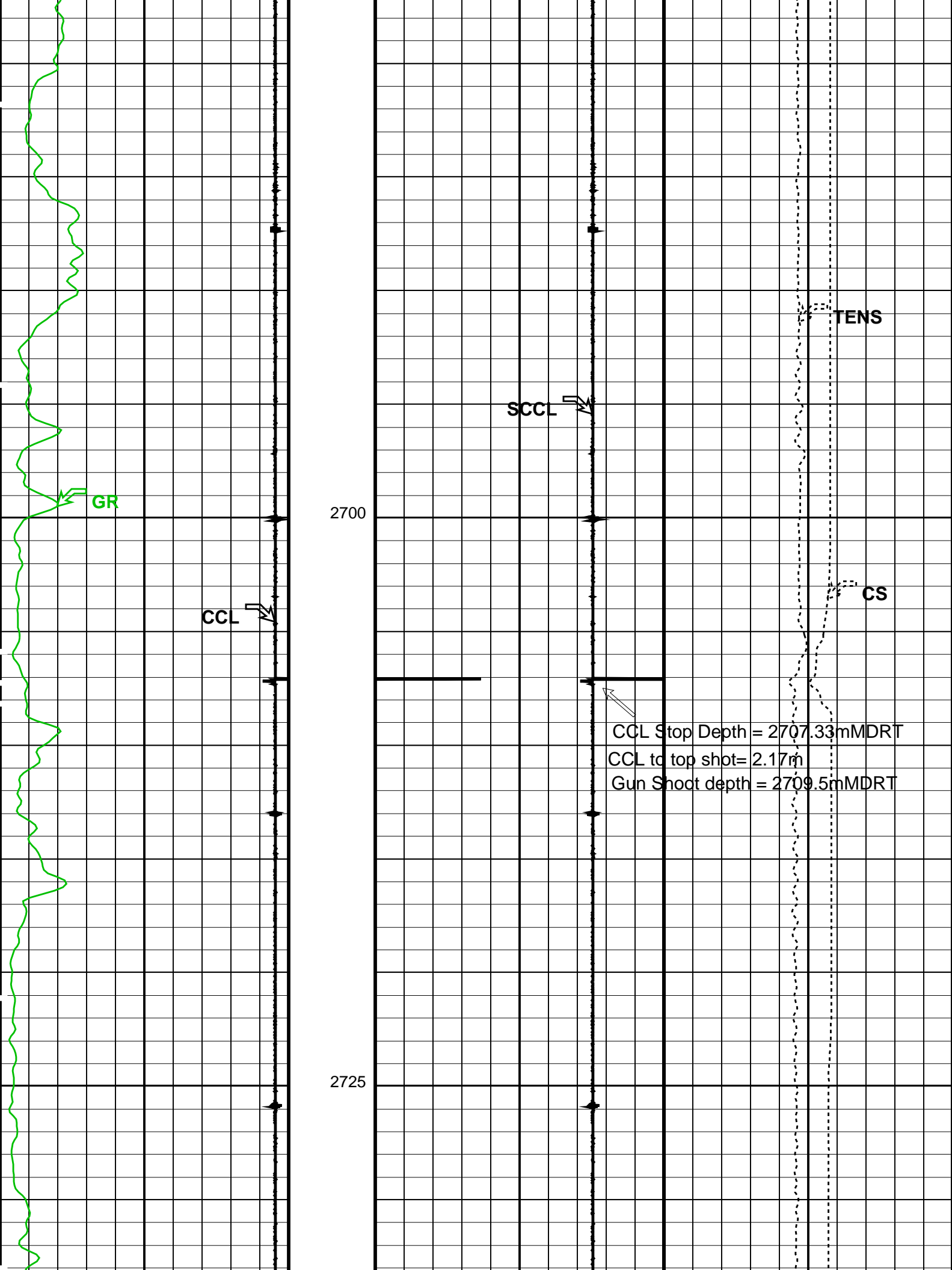
0

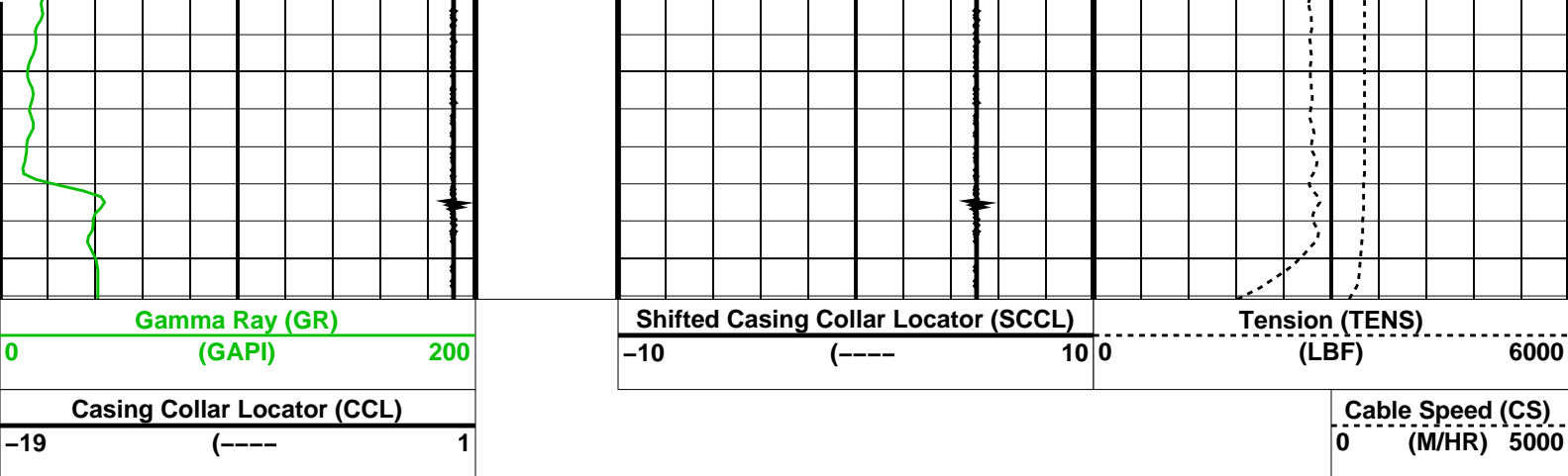
Tension (TENS)

(LBF)

6000







PIP SUMMARY

Time Mark Every 60 S

Format: PERFO Vertical Scale: 1:200

Graphics File Created: 04-Dec-2005 23:43

OP System Version: 13C0-300
MCM

SHM_GUN 13C0-300 PGGT-D 13C0-300

Output DLIS Files

DEFAULT PERFO_016LUP FN:15 PRODUCER 04-Dec-2005 23:43

Schlumberger

4.5" HSD Gun
Correlation Pass Gun 1

MAXIS Field Log

Company: Esso Australia Ltd.

Well: A-19a

Output DLIS Files

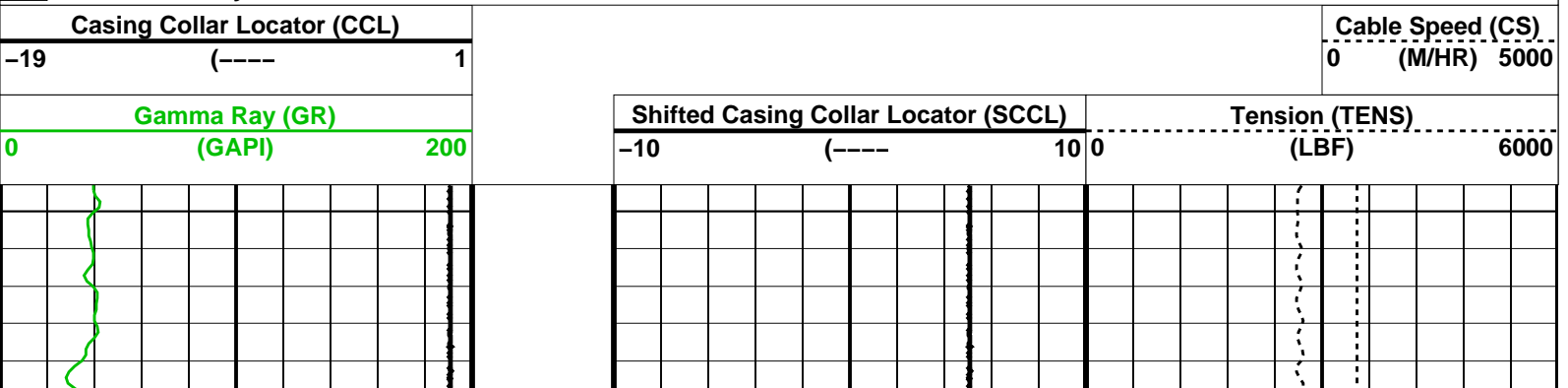
DEFAULT PERFO_015LUP FN:14 PRODUCER 04-Dec-2005 23:34

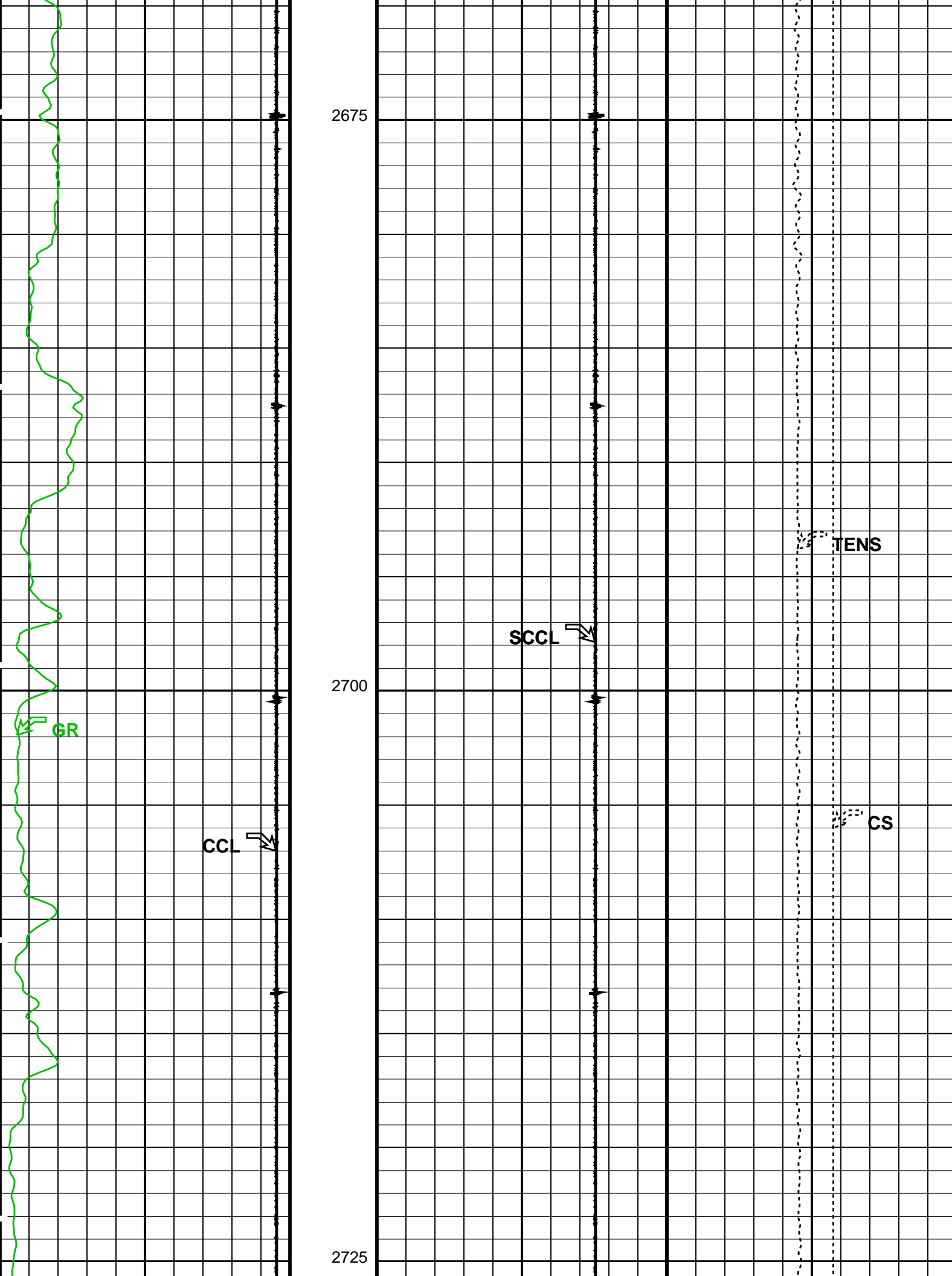
OP System Version: 13C0-300
MCM

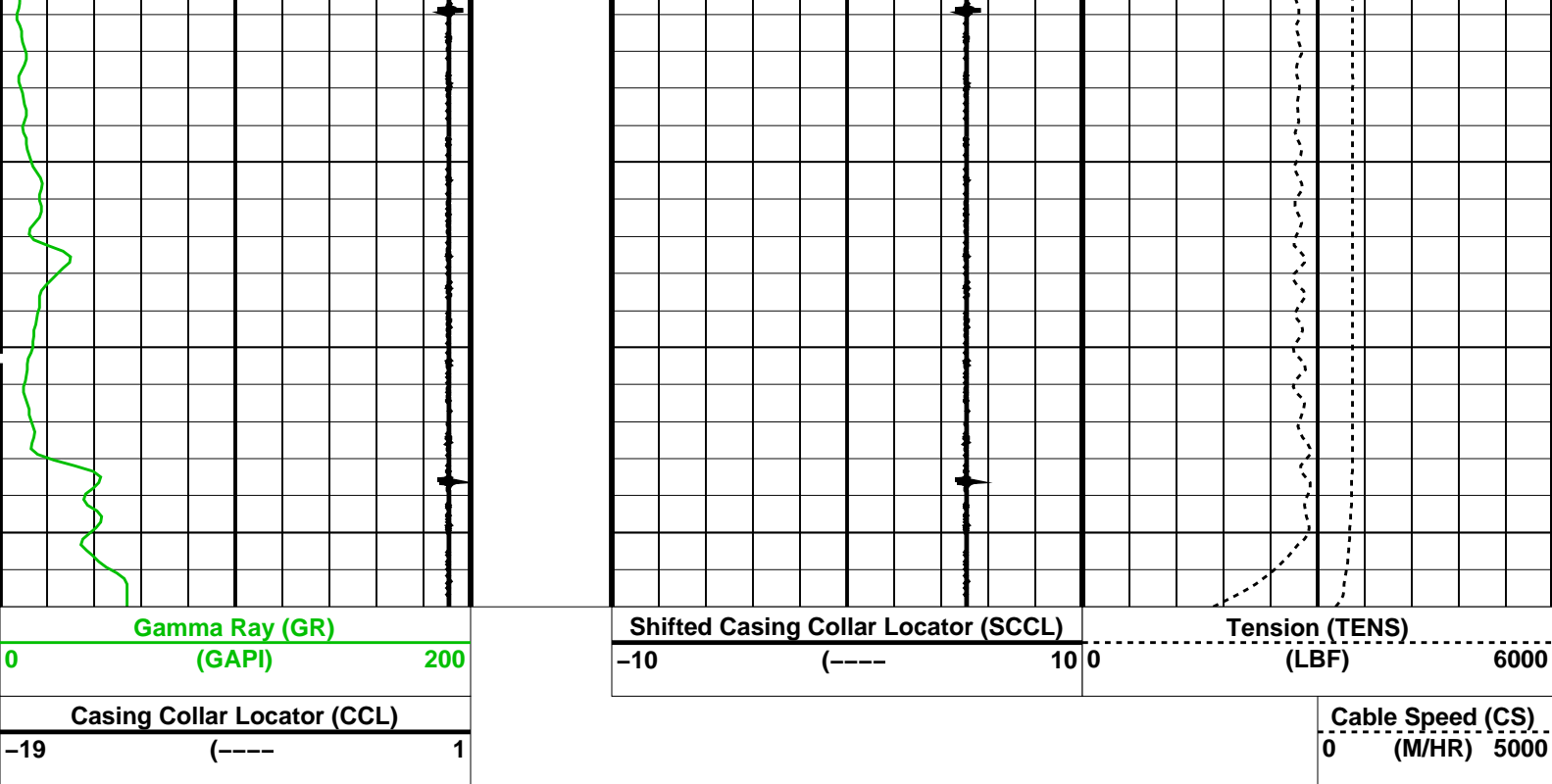
SHM_GUN 13C0-300 PGGT-D 13C0-300

PIP SUMMARY

Time Mark Every 60 S







PIP SUMMARY

Time Mark Every 60 S
Format: PERFO Vertical Scale: 1:200 Graphics File Created: 04-Dec-2005 23:34

OP System Version: 13C0-300
MCM

SHM_GUN 13C0-300 PGGT-D 13C0-300

Output DLIS Files

DEFAULT PERFO_015LUP FN:14 PRODUCER 04-Dec-2005 23:34

Schlumberger

Junk Basket
6" Gauge Ring

MAXIS Field Log

Company: Esso Australia Ltd. Well: A-19a

Input DLIS Files

DEFAULT PERFO_006LUP FN:5 PRODUCER 04-Dec-2005 17:15 2759.8 M 2450.0 M

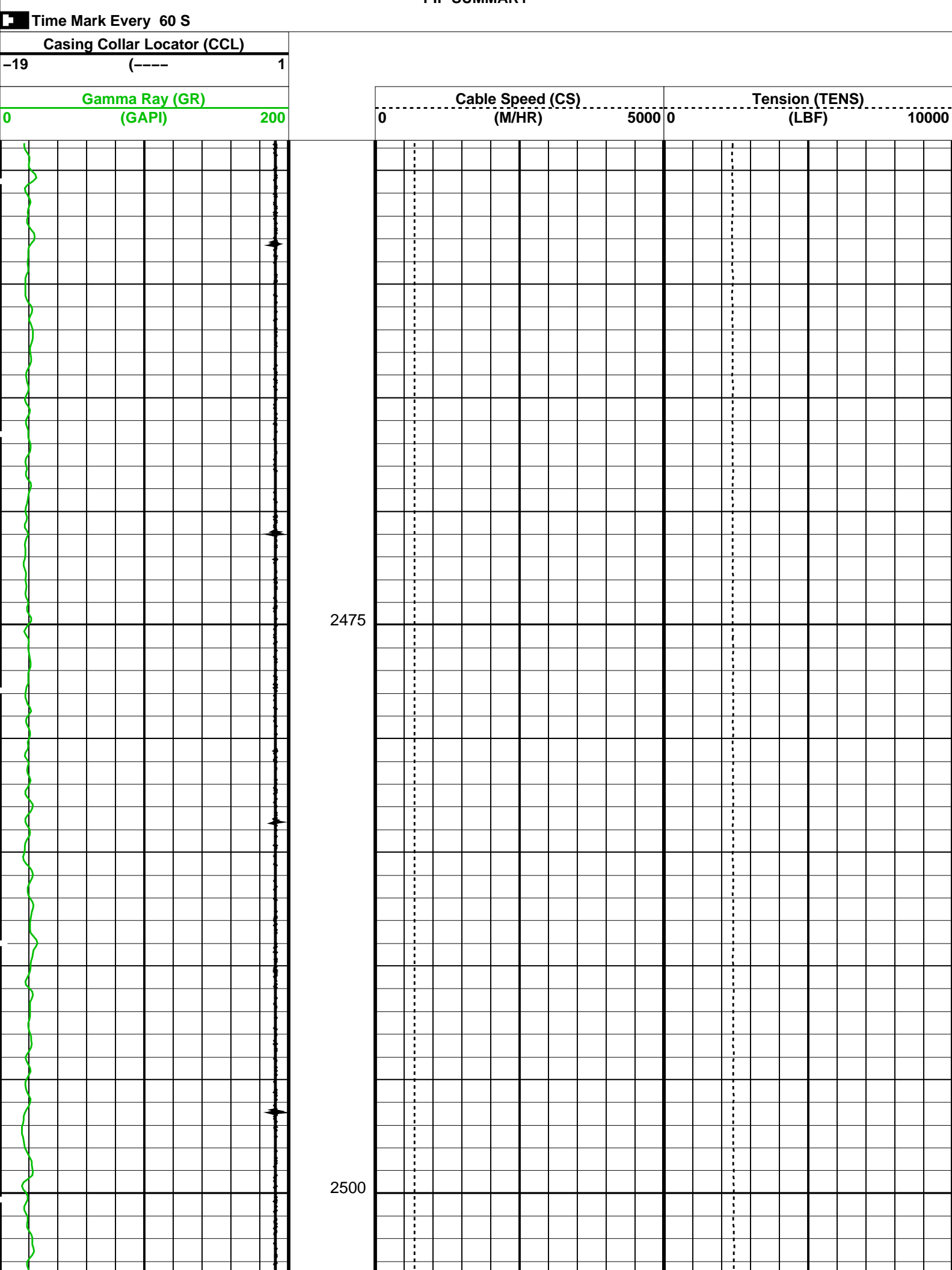
Output DLIS Files

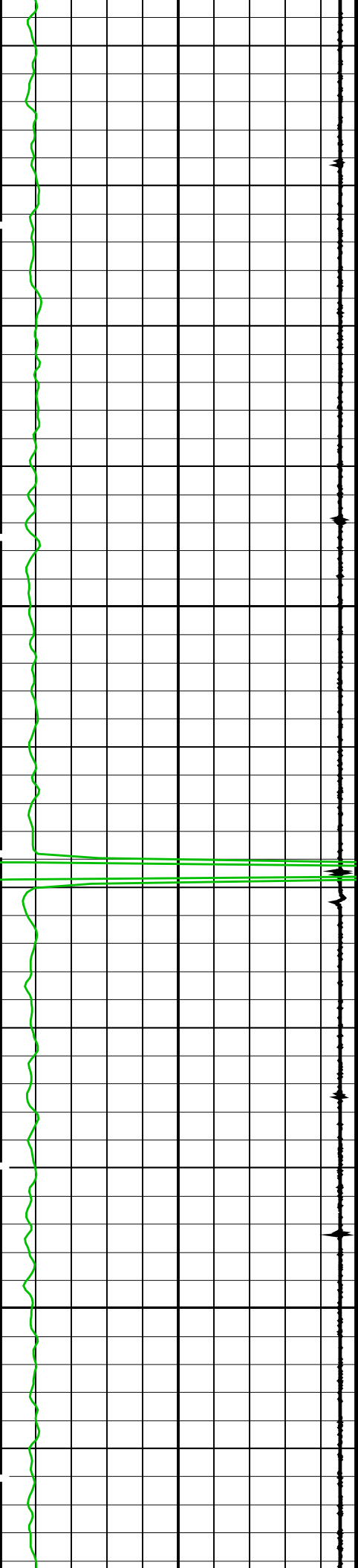
DEFAULT PERFO_007PUP FN:6 PRODUCER 04-Dec-2005 18:44 2763.0 M 2453.6 M

OP System Version: 13C0-300
MCM

SHM_GUN 13C0-300 PGGT-D 13C0-300

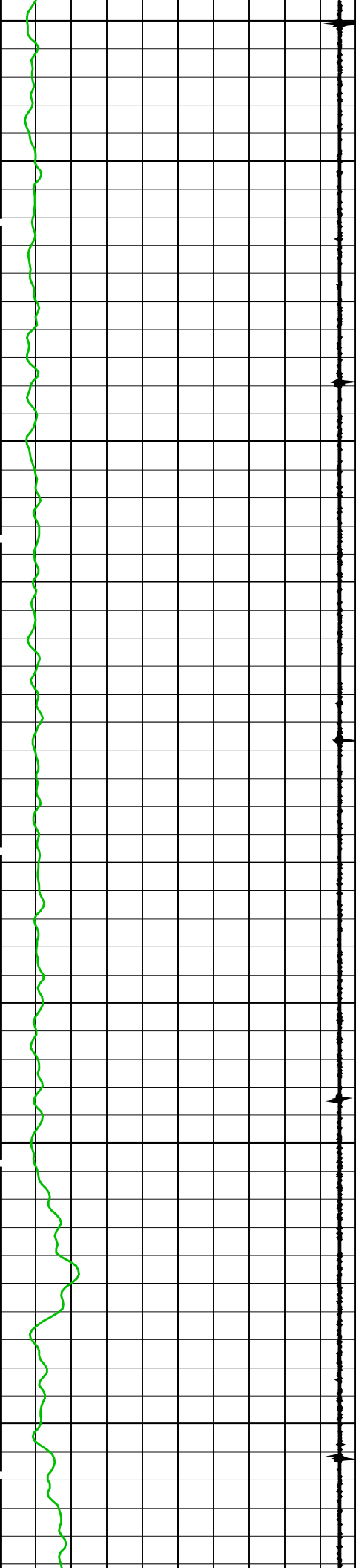
PIP SUMMARY





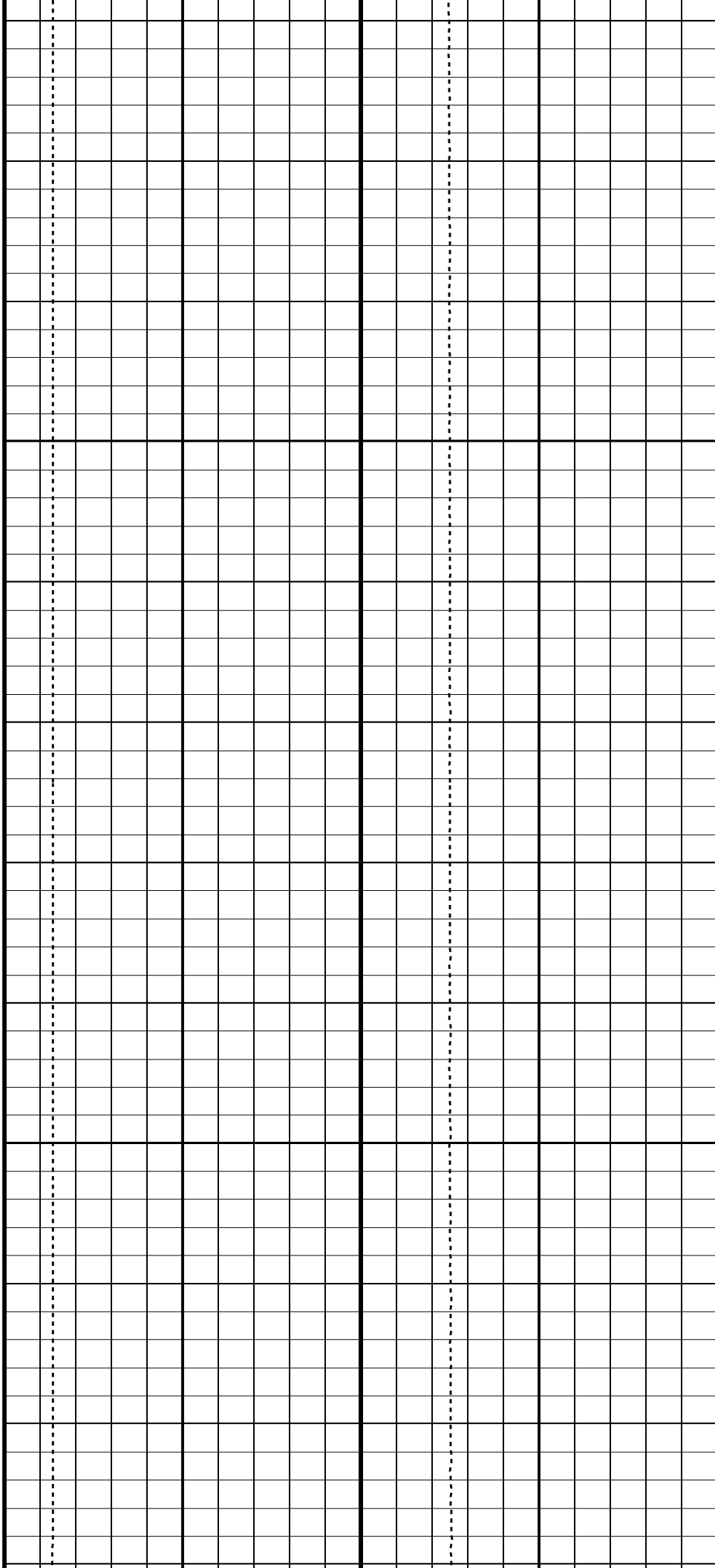
2525

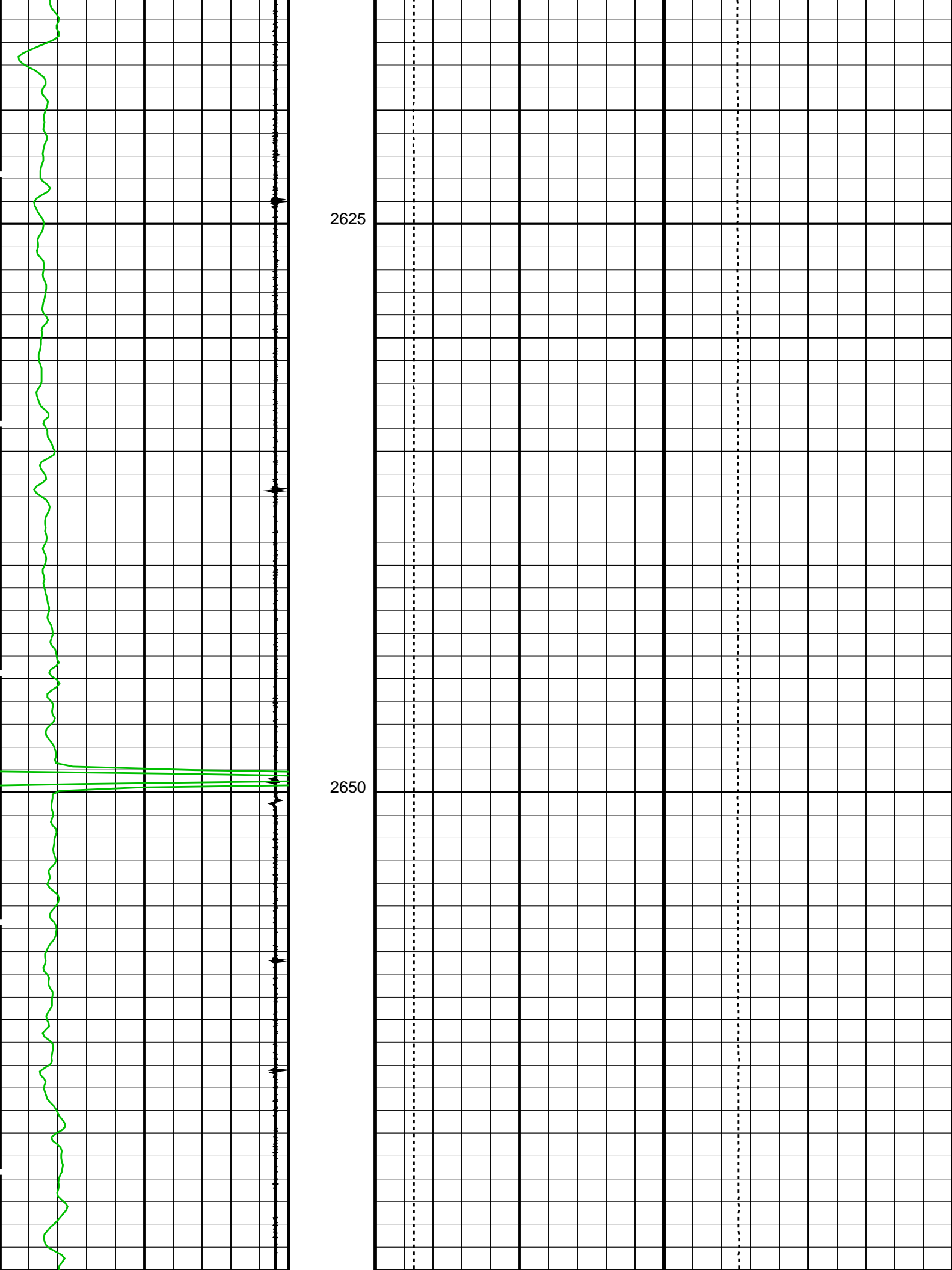
2550

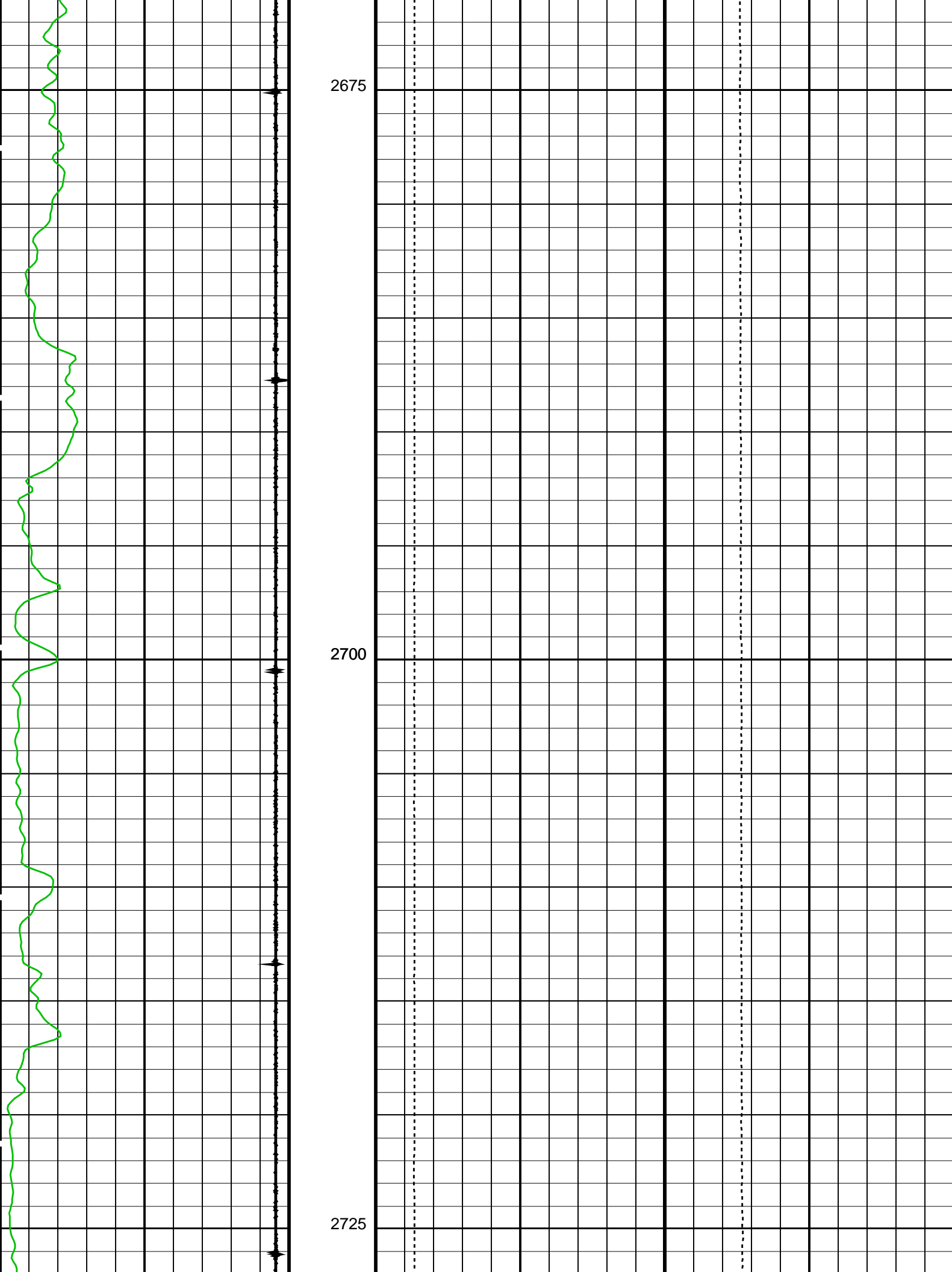


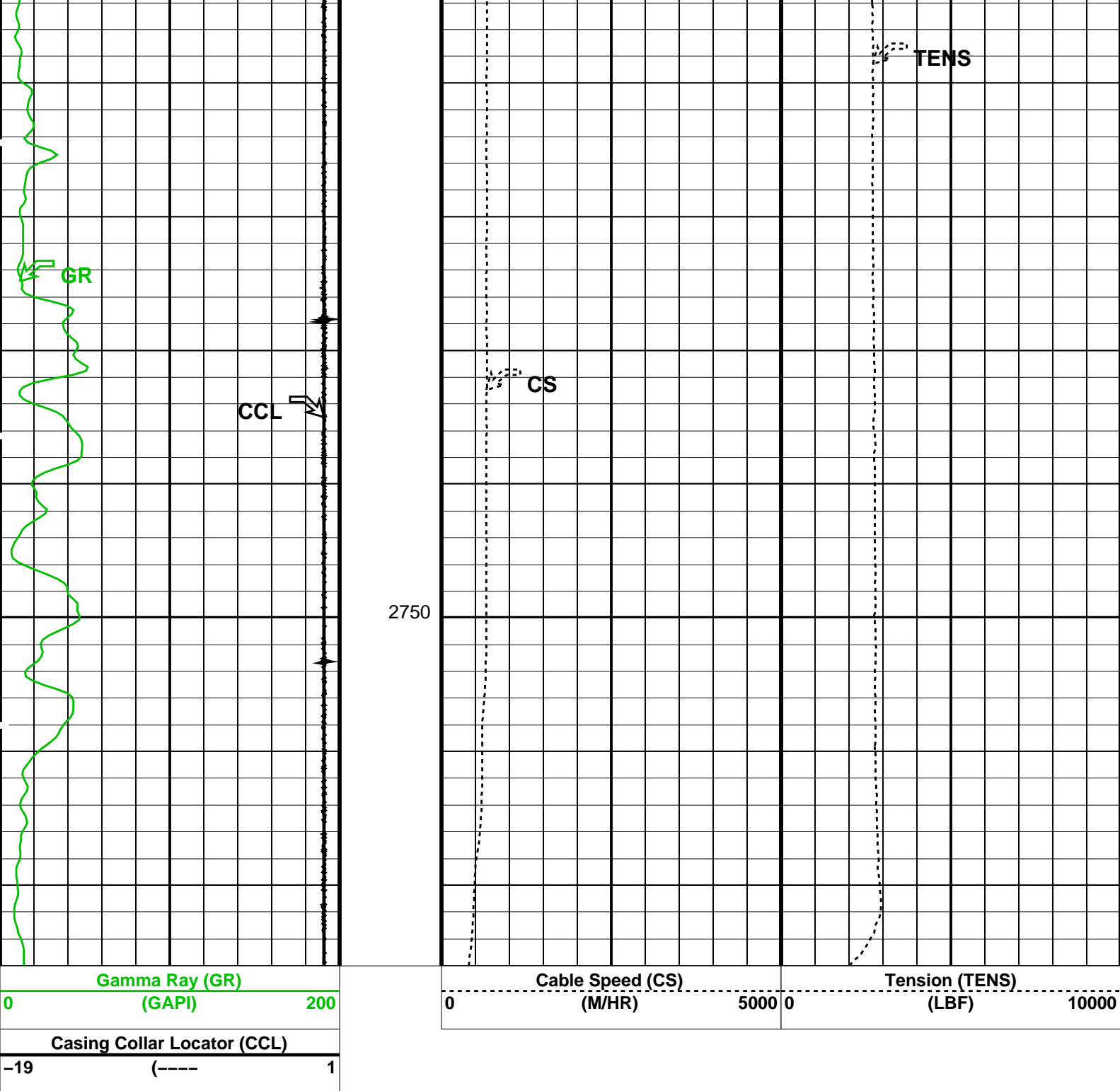
2575

2600









PIP SUMMARY

Time Mark Every 60 S

Parameters		
DLIS Name	Description	Value
System and Miscellaneous		
DO	Depth Offset for Playback	3.2 M
PP	Playback Processing	NORMAL

Format: PERFO Vertical Scale: 1:200 Graphics File Created: 04-Dec-2005 18:44

OP System Version: 13C0-300			
MCM			
SHM_GUN	13C0-300	PGGT-D	13C0-300

Input DLIS Files

Output DLIS Files

Company:Esso Australia Ltd.

Schlumberger

Well:A-19a

Field:Bream

Rig:Rig 453/Prod 3

Country:Australia

6" Junk Basket

4.5" HSD Record

Gamma Ray-CCL