

Company: Esso Australia Ltd.

Well: BMA A-25

Field: Bream

Rig: ISDL 453 / Prod 3

Country: Australia

2 1/8" Phased Enerjet
PGGT-GR-CCI
Perforating record

ISDL 453 / Prod 3
Rig: Bream
Field: Gippsland
Location: BMA A-25
Well: Esso Australia Ltd.
Company:

LOCATION			
Gippsland		Elev.:	K.B. 33.2 m
Basin			G.L. -59 m
Bass Strait			D.F. 33.2 m
Permanent Datum:	Mean Sea Level	Elev.:	0 m
Log Measured From:	Kelly Bushing	33.2 m	above Perm. Datum
Drilling Measured From:	Kelly Bushing		
State: Victoria	Max. Well Deviation 70 deg	Longitude 147° 46' 20.4071"E	Latitude 038° 29' 58.9208"S

Logging Date			22-Dec-2005		
Run Number			2		
Depth Driller			4012 m		
Schlumberger Depth			4005 m		
Bottom Log Interval			3993 m		
Top Log Interval			3990 m		
Casing Fluid Type			Production Fluids		
Salinity					
Density			1 g/cm3		
Fluid Level					
BIT/CASING/TUBING STRING					
Bit Size			7.000 in		
From			3645.5 m		
To			4064 m		
Casing/Tubing Size			7.000 in		
Weight			26 lbm/ft		
Grade			N-80		
From			3645.5 m		
To			4064 m		
Maximum Recorded Temperatures					
Logger On Bottom			22-Dec-2005		18:30
Unit Number			41		AUSL
Recorded By			J.Hogan/D.Molokhov		
Witnessed By			Ross Morris, Glenn Campbell		

			Run 1	Run 2	Run 3
Oil Density					
Water Salinity					
Gas Gravity					
Bo					
Bw					
1/Bg					
Bubble Point Pressure					
Bubble Point Temperature					
Solution GOR					
Maximum Deviation			70 deg		
CEMENTING DATA					
Primary/Squeeze			Primary		
Casing String No					
Lead Cement Type					
Volume					
Density					
Water Loss					
Additives					
Tail Cement Type					
Volume					
Density					
Water Loss					
Additives					
Expected Cement Top					
Logging Date					
Run Number					
Depth Driller					
Schlumberger Depth					
Bottom Log Interval					
Top Log Interval					
Casing Fluid Type					
Salinity					
Density					
Fluid Level					
BIT/CASING/TUBING STRING					
Bit Size					
From					
To					
Casing/Tubing Size					
Weight					
Grade					
From					
To					
Maximum Recorded Temperatures					
Logger On Bottom					
Unit Number		Location			
Recorded By					
Witnessed By					

DEPTH SUMMARY LISTING

Date Created: 28-DEC-2005 11:21:56

Depth System Equipment

Depth Measuring Device		Tension Device		Logging Cable	
Type:	IDW-H	Type:	CMTD-B/A	Type:	2-32ZT
Serial Number:	796	Serial Number:	1721	Serial Number:	26308
Calibration Date:	09 Jun 05	Calibration Date:	15 Feb 05	Length:	4500.07 M
Calibrator Serial Number:	1009	Calibrator Serial Number:	1051	Conveyance Method: Wireline Rig Type: Offshore_Fixed	
Calibration Cable Type:	2-32ZT	Calibration Gain:	0.81		
Wheel Correction 1:	-6	Calibration Offset:	217.00		
Wheel Correction 2:	-6				

Depth Control Parameters

Log Sequence:	Subsequent Trip To the Well
Reference Log Name:	Solar Composite Log
Reference Log Run Number:	Unknown
Reference Log Date:	11 JAN 05
Subsequent Trip Down Log Correction:	0.00 M

Depth Control Remarks

1.
2.
3.
4.
5.
6.

DISCLAIMER

THE USE OF AND RELIANCE UPON THIS RECORDED-DATA BY THE HEREIN NAMED COMPANY (AND ANY OF ITS AFFILIATES, PARTNERS, REPRESENTATIVES, AGENTS, CONSULTANTS AND EMPLOYEES) IS SUBJECT TO THE TERMS AND CONDITIONS AGREED UPON BETWEEN SCHLUMBERGER AND THE COMPANY, INCLUDING: (a) RESTRICTIONS ON USE OF THE RECORDED-DATA; (b) DISCLAIMERS AND WAIVERS OF WARRANTIES AND REPRESENTATIONS REGARDING COMPANY'S USE OF AND RELIANCE UPON THE RECORDED-DATA; AND (c) CUSTOMER'S FULL AND SOLE RESPONSIBILITY FOR ANY INFERENCE DRAWN OR DECISION MADE IN CONNECTION WITH THE USE OF THIS RECORDED-DATA.

OTHER SERVICES1	OTHER SERVICES2
OS1: none	OS1:
OS2:	OS2:
OS3:	OS3:
OS4:	OS4:
OS5:	OS5:
REMARKS: RUN NUMBER 1	REMARKS: RUN NUMBER 2
Log Correlated to Exxon Mobil Log dated 11-Jan-2005	
Purpose of log:	
To perforate well at Interval 3990m MDKB to 3999m MDKB	
Set guns on depth, flowed well for 30min prior to shooting,	
flowed for 15min after shooting.	
CCL to top shot = 2.62m	
CCL to top depth = 3997.4m MDKB	

Peter Lawrence, Nathan Simmons (nights)

STOP

SHM-EA

MH-22

AH-38

EQF-43

EQF-43

EQF-43

EQF-43

PGGT-C

PGGC

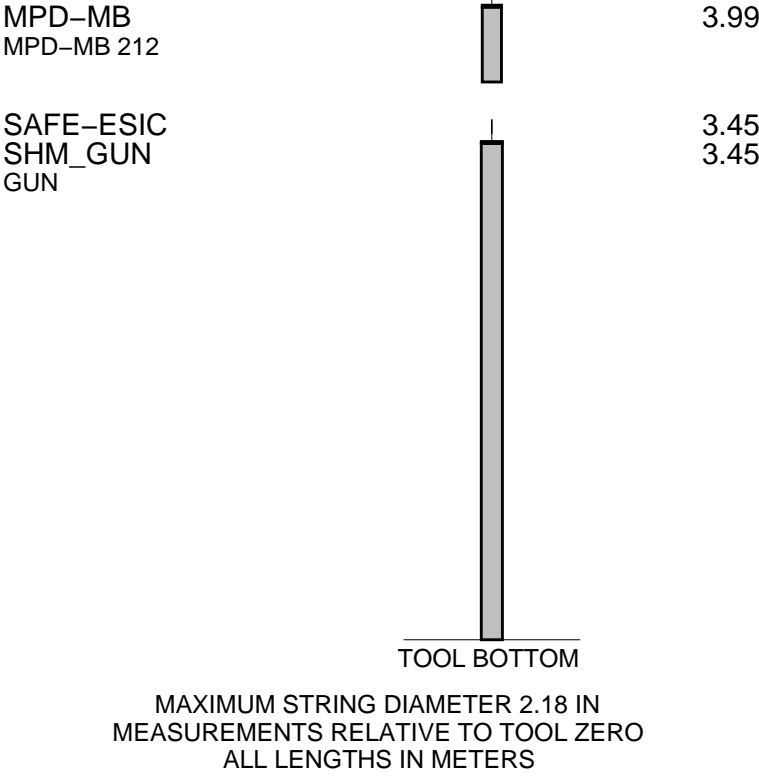
PGGH-A 263

Gamma Ray

Casing Co Tension

AH-FLEX

AH-FLEX



Client: Esso Australia Ltd.

Well: BMA A-25

Field: Bream

State: Victoria

Country: Australia

Drawing Date: 12/22/2005

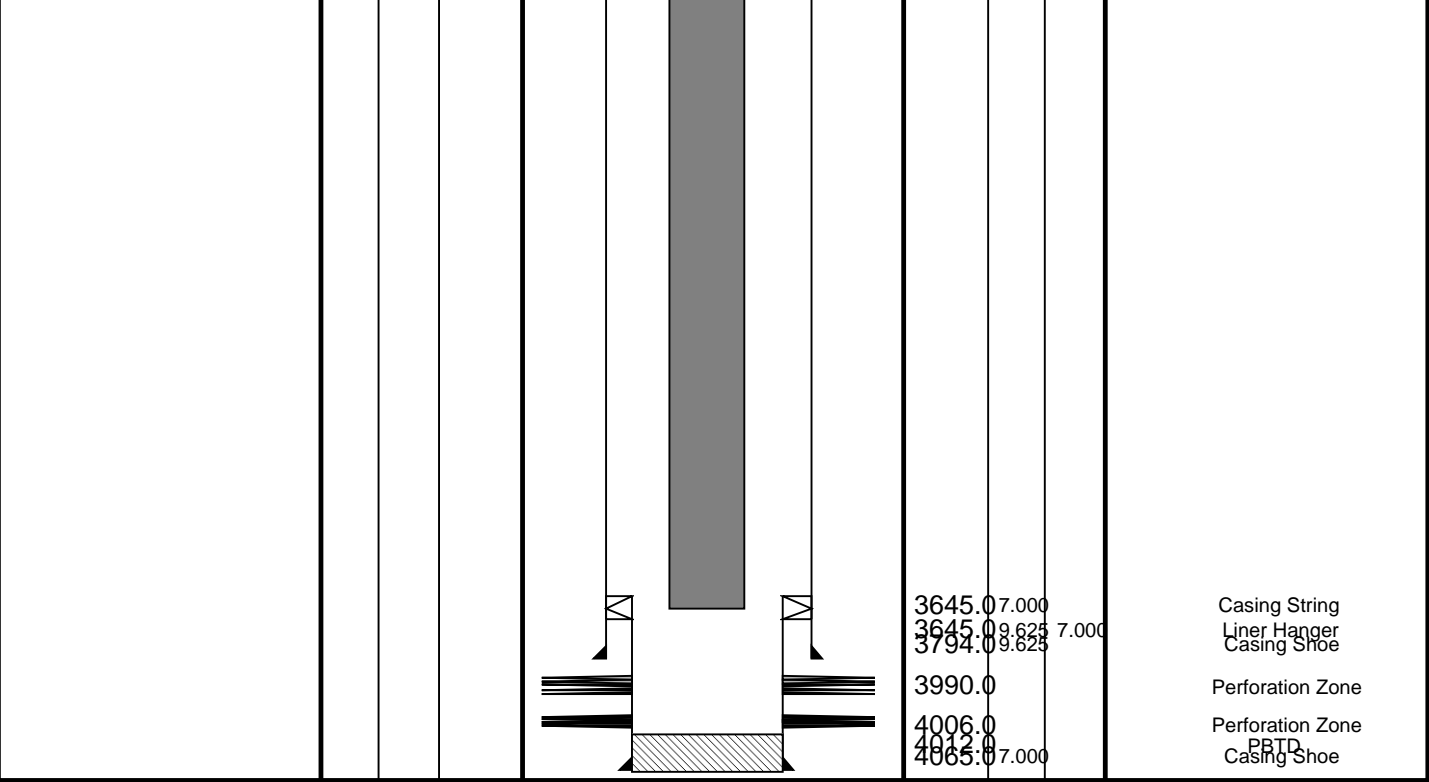
API #:

Rig Name: Bream A/Rig 453

Reference Datum: Kelly Bushing

Elevation: 33.2 m

Production String			Well Schematic			Casing String		
(in) (m)			(m) (in)					
OD	ID	MD	MD	OD	ID			
Tubing	3.500	10.0	13.0	13.375	13.375	Casing String		
Gas Lift Mandrel	3.500	590.0						
Gas Lift Mandrel	3.500	1037.0						
			1545.0	13.375		Casing Shoe		



Shooting Pass

MAXIS Field Log

Company: Well:

Output DLIS Files

DEFAULT PERFO_056LUP FN:55 PRODUCER 22-Dec-2005 08:13

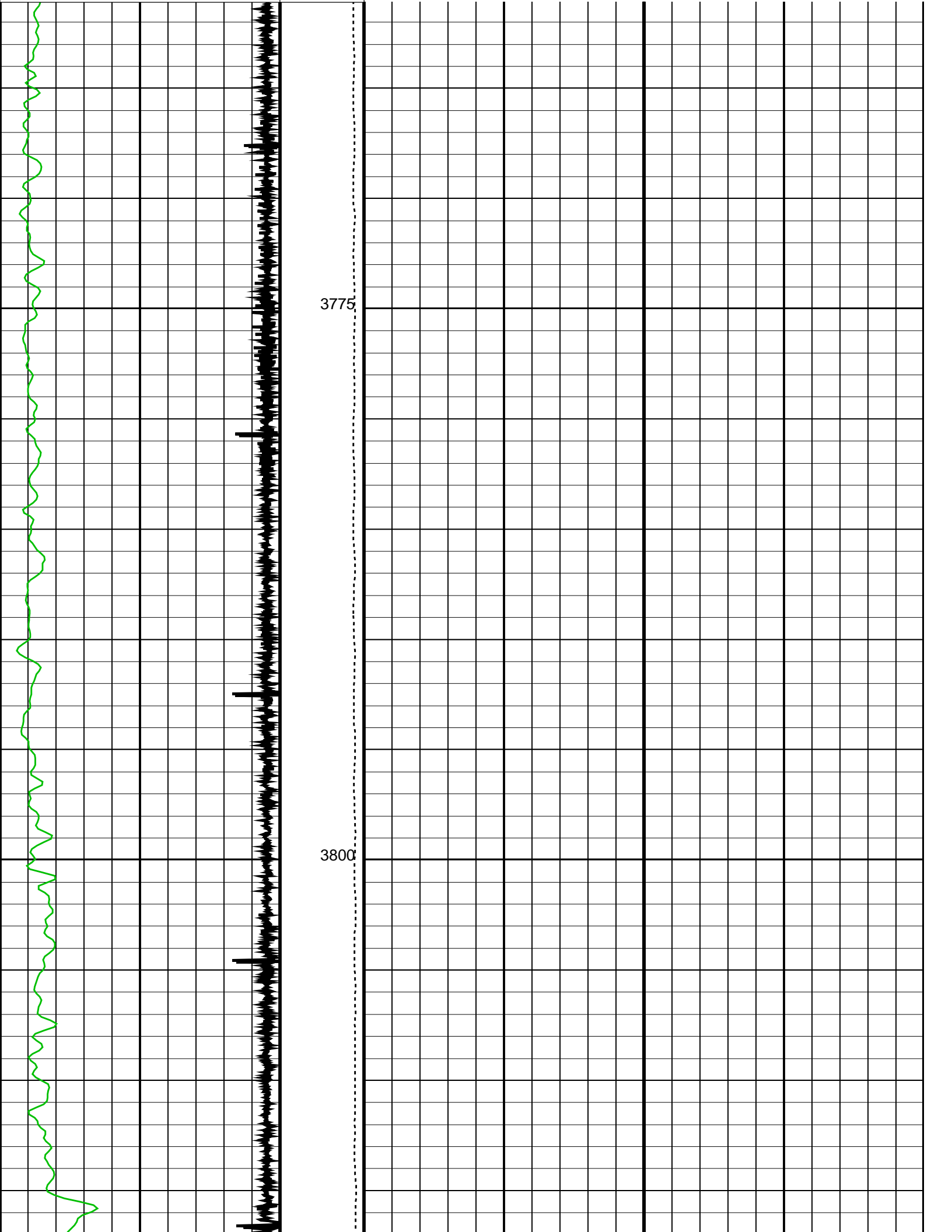
OP System Version: 13C0-300

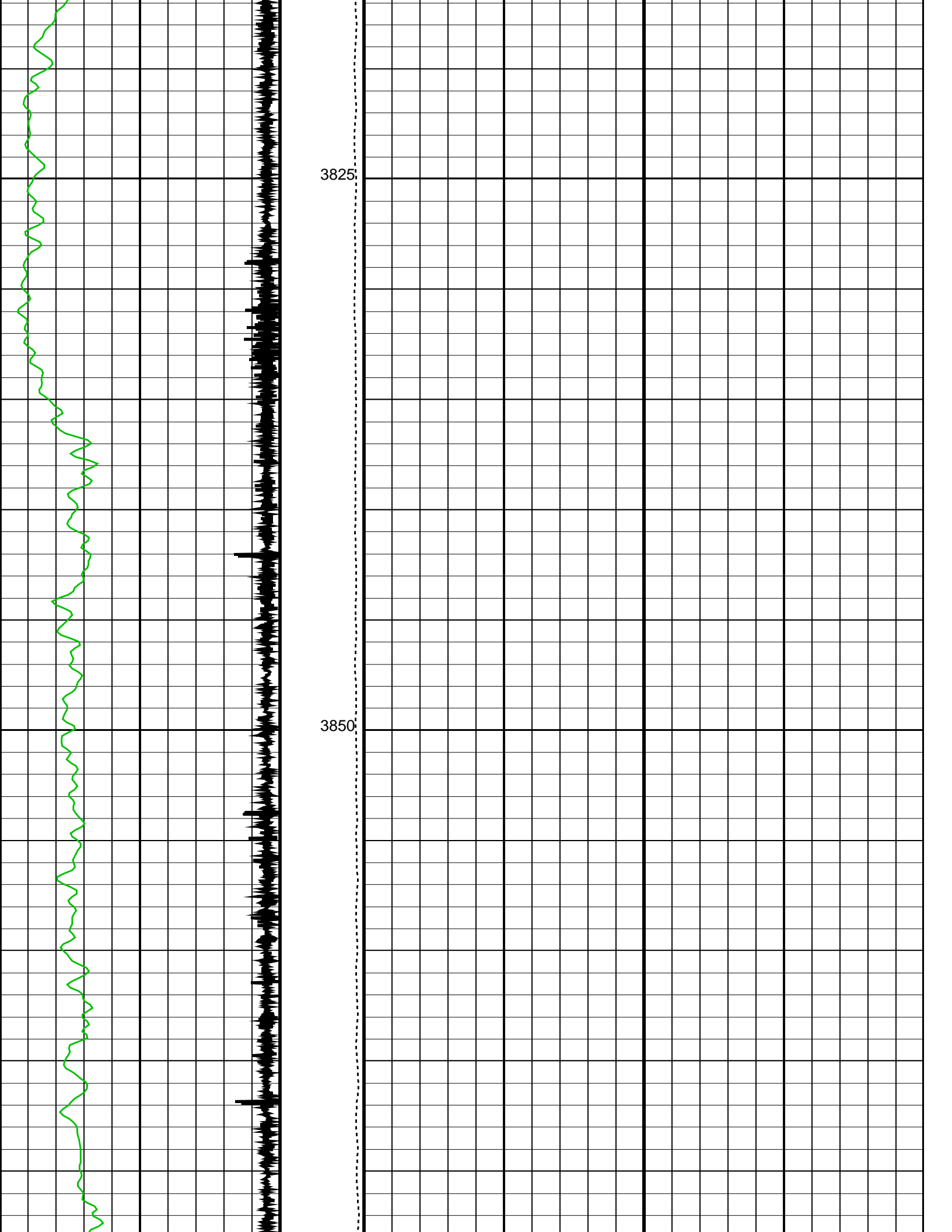
MCM

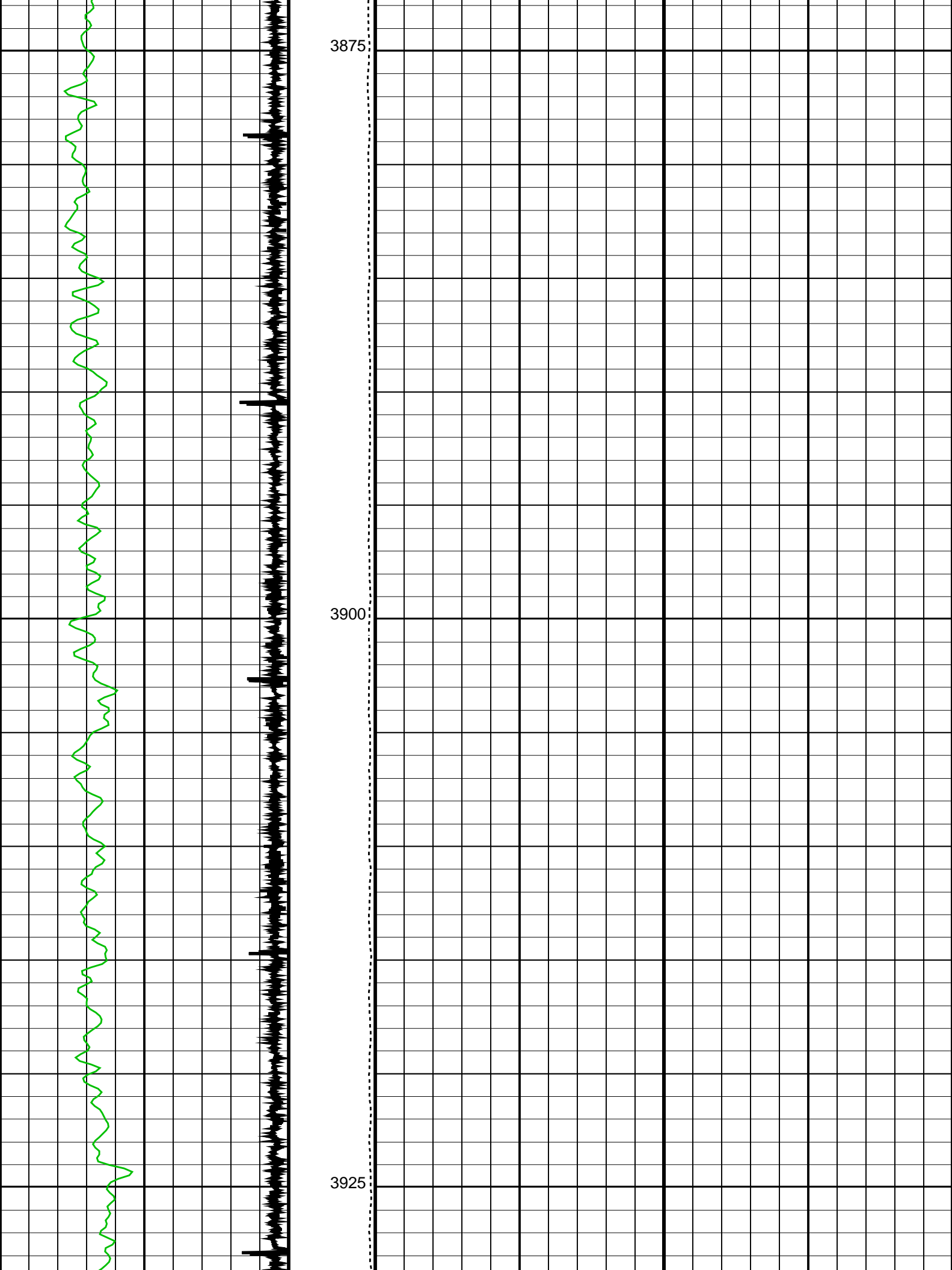
SHM_GUN 13C0-300 SAFE-ESIC 13C0-300
PGGT-C 13C0-300

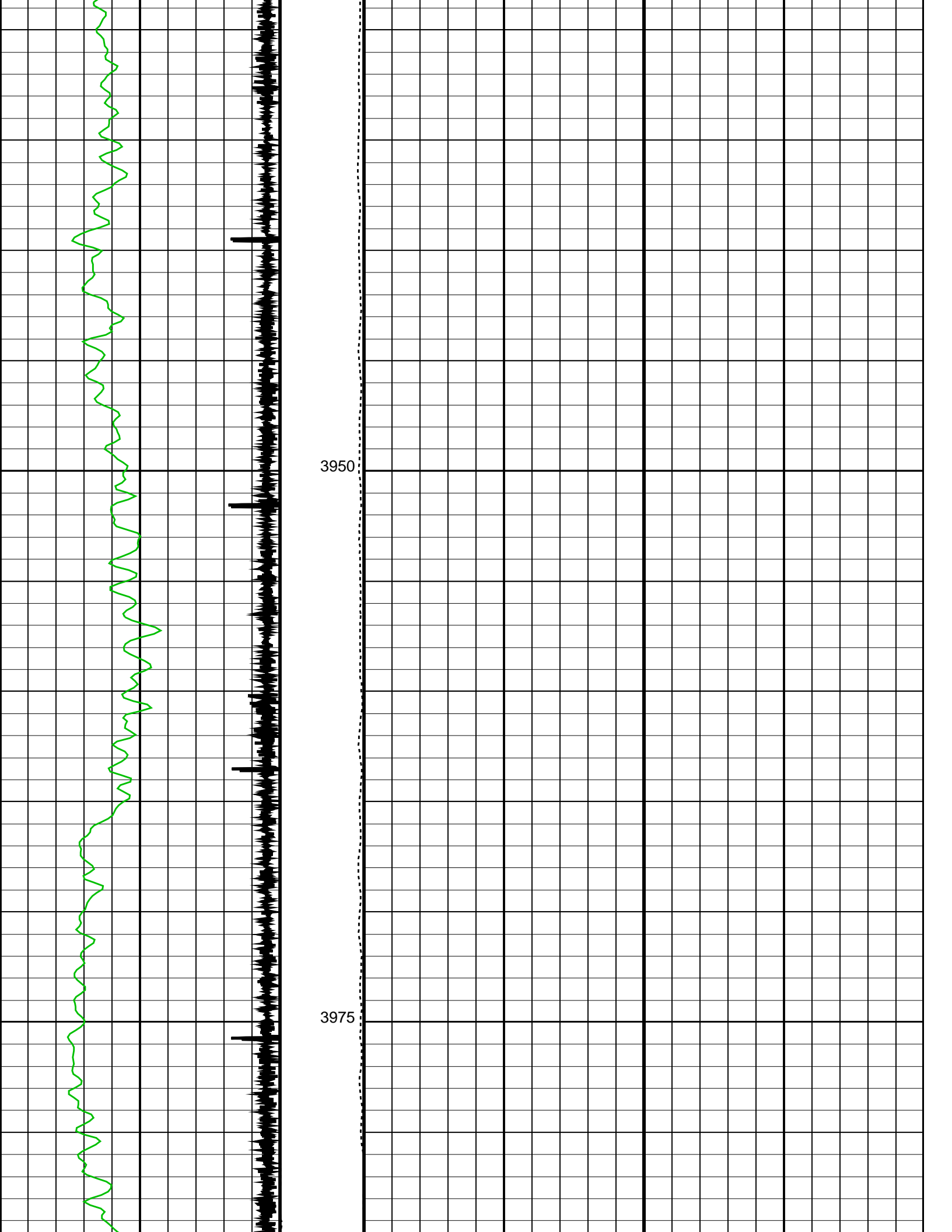
Casing Collar Locator (CCL)		
-19	(----	1
Gamma Ray (GR)		
0	(GAPI)	200
0		2000

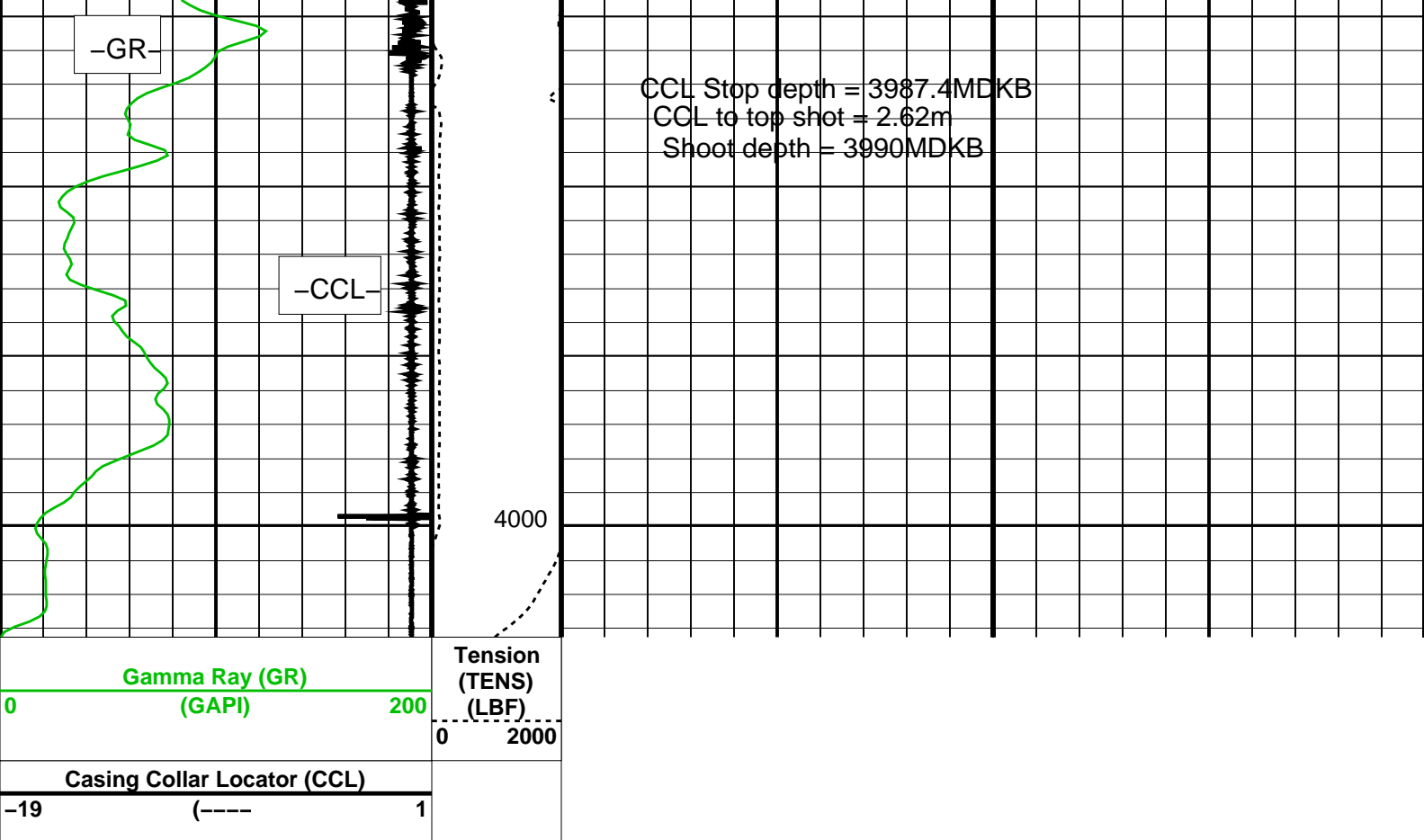
Tension
(TENS)
(LBF)











Format: CORRELATION Vertical Scale: 1:200 Graphics File Created: 22-Dec-2005 08:13

OP System Version: 13C0-300

MCM

SHM_GUN 13C0-300 SAFE-ESIC 13C0-300
PGGT-C 13C0-300

Output DLIS Files

DEFAULT PERFO_056LUP FN:55 PRODUCER 22-Dec-2005 08:13

Schlumberger

Correlation Pass

MAXIS Field Log

Company: Well:

Output DLIS Files

DEFAULT PERFO_055LUP FN:54 PRODUCER 22-Dec-2005 08:03

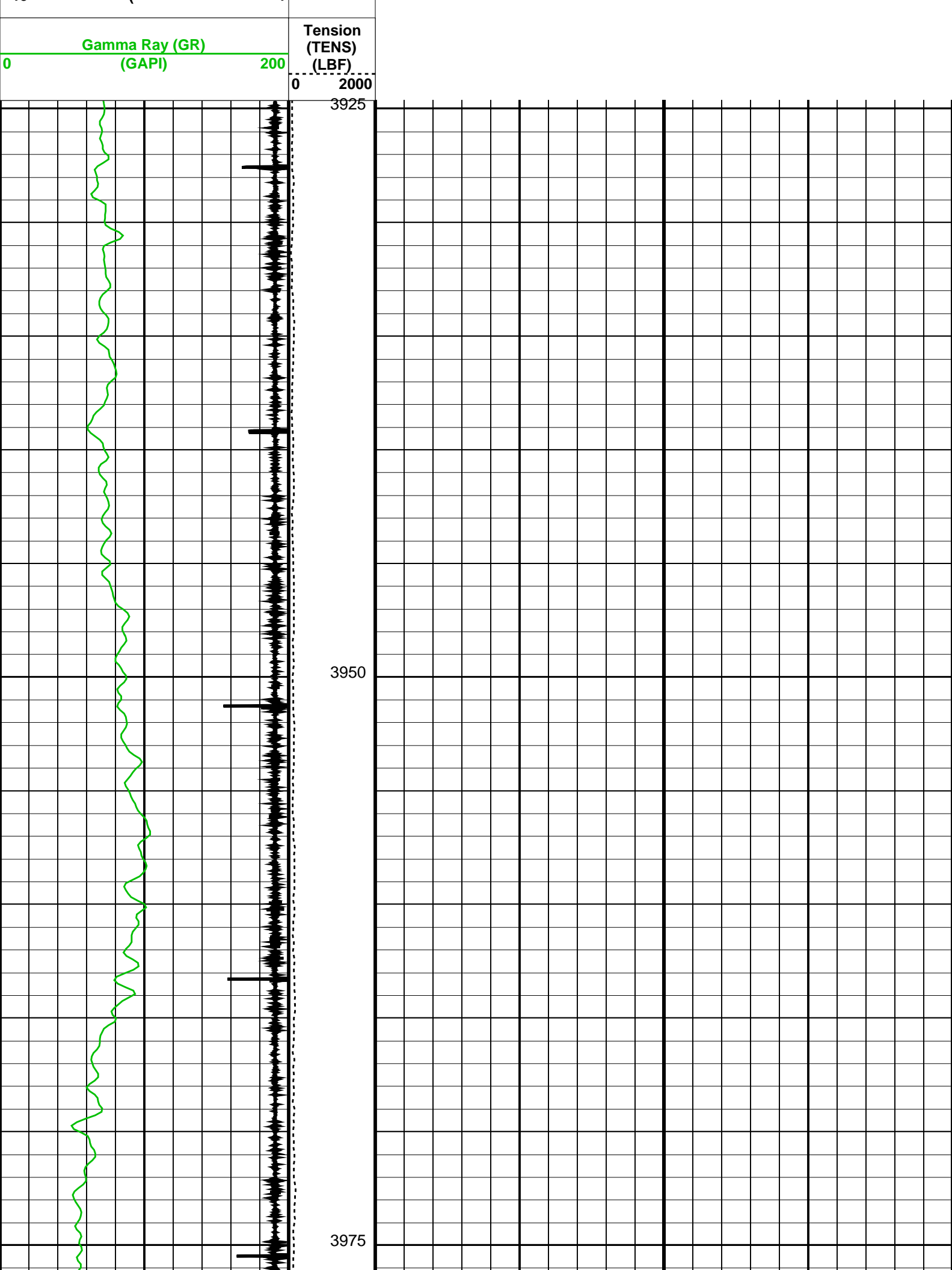
OP System Version: 13C0-300

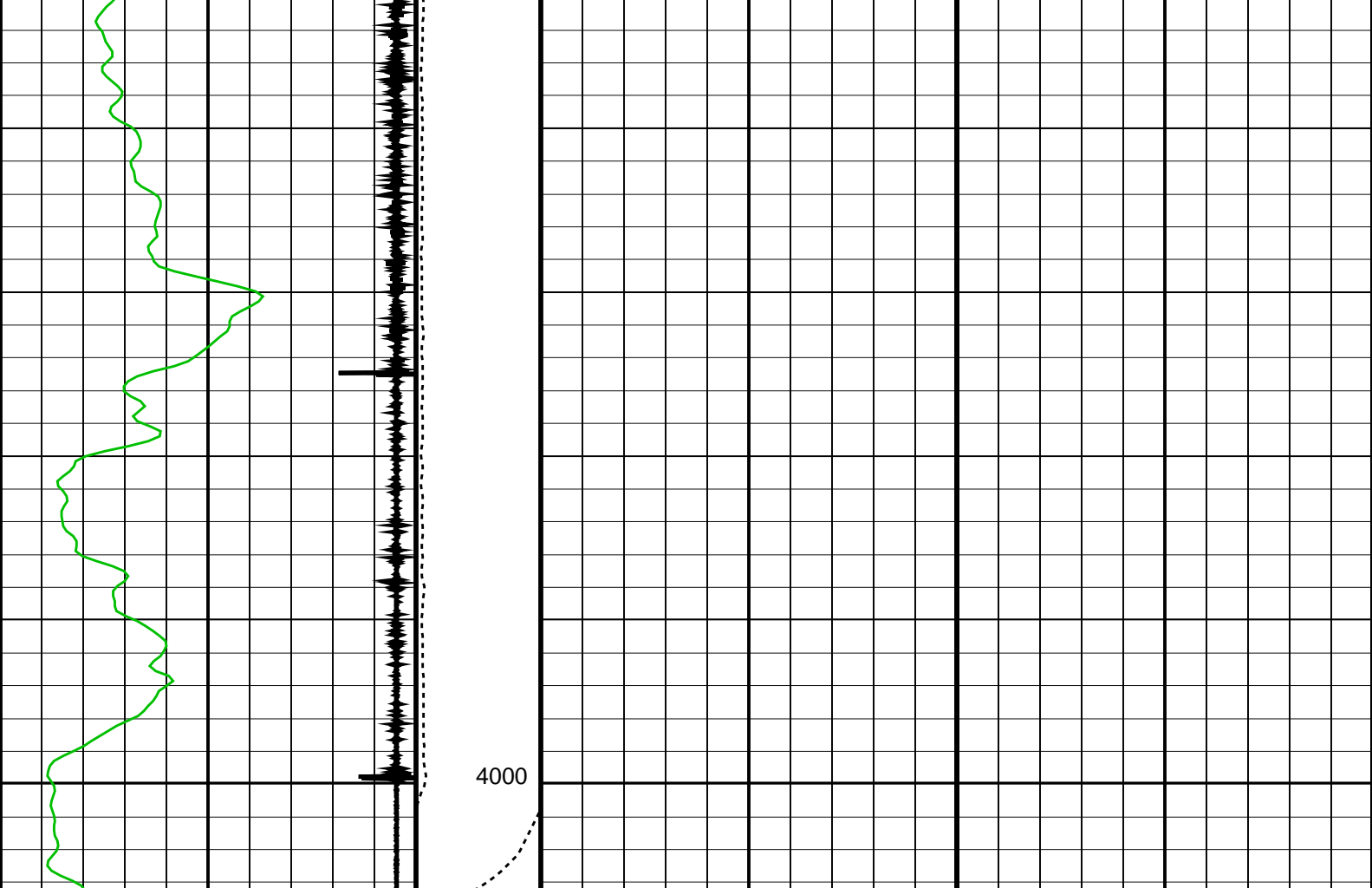
MCM

SHM_GUN 13C0-300 SAFE-ESIC 13C0-300
PGGT-C 13C0-300

Casing Collar Locator (CCL)

-19 (---- 1





Gamma Ray (GR) (GAPI)	
0	200
Casing Collar Locator (CCL) (----	
-19	1

Tension
(TENS)
(LBF)

0 2000

Format: CORRELATION Vertical Scale: 1:200 Graphics File Created: 22-Dec-2005 08:03

OP System Version: 13C0-300

MCM

SHM_GUN	13C0-300	SAFE-ESIC	13C0-300
PGGT-C	13C0-300		

Output DLIS Files

DEFAULT	PERFO_055LUP	FN:54	PRODUCER	22-Dec-2005 08:03
---------	--------------	-------	----------	-------------------

Company: **Esso Australia Ltd.**

Schlumberger

Well: **BMA A-25**

Field: **Bream**

Rig: **Rig 453 / Prod 3**

Country: **Australia**

2 1/8" Phased Enerjet
PGGT-GR-CCI
Perforating Record