

[illegible]

Company: ExxonMobil

Well: FLA A-21a

Field: Flounder

Rig: Prod 4

Country: Australia

Dummy Plug

7 5/8" MPBT Plug

Dump Bailer Record

Field:	Flounder
Location:	Gippsland Basin
Well:	FLA A-21a
Company:	ExxonMobil
LOCATION	
Gippsland Basin Bass Strait	Elev.: K.B. 40.8 m G.L. -93 m D.F. 40.8 m
Permanent Datum: Log Measured From:	Mean Sea Level Kelly Bushing
Drilling Measured From:	Kelly Bushing
State: Victoria	Max. Well Deviation 60 deg
	Longitude 148 26' 17.304" E
	Latitude 38 18' 44.786" S

Logging Date 22-Nov-2005

Run Number 2-4

Depth Driller 3680 m

Schlumberger Depth 3356 m

Bottom Log Interval 3356 m

Top Log Interval 2995 m

Casing Fluid Type Production Fluids

Salinity

Density

Fluid Level

BIT/CASING/TUBING STRING

Bit Size

From

To

Casing/Tubing Size 7.625 in

Weight 29.7 lbm/ft

Grade L-80

From 20.4 m

To 3826.25 m

Maximum Recorded Temperatures 108 degC

Logger On Bottom 22-Nov-2005 9:15

Unit Number 1 Location VEA

Recorded By Paul Tarrant & Joel Hogan

Witnessed By Barrie White

			Run 1	Run 2	Run 3
PVT DATA					
Oil Density					
Water Salinity					
Gas Gravity					
Bo					
Bw					
1/Bg					
Bubble Point Pressure					
Bubble Point Temperature					
Solution GOR					
Maximum Deviation			60 deg		
CEMENTING DATA					
Primary/Squeeze			Primary		
Casing String No					
Lead Cement Type					
Volume					
Density					
Water Loss					
Additives					
Tail Cement Type					
Volume					
Density					
Water Loss					
Additives					
Expected Cement Top					

Logging Date

Run Number

Depth Driller

Schlumberger Depth

Bottom Log Interval

Top Log Interval

Casing Fluid Type

Salinity

Density

Fluid Level

BIT/CASING/TUBING STRING

Bit Size

From

To

Casing/Tubing Size

Weight

Grade

From

To

Maximum Recorded Temperatures

Logger On Bottom

Unit Number

Recorded By

Witnessed By

DEPTH SUMMARY LISTING

Date Created: 22-Nov-2005 12:08:00

Depth System Equipment

Depth Measuring Device		Tension Device		Logging Cable	
Type:	IDW-H	Type:	CMTD-C	Type:	2-32ZT
Serial Number:	797	Serial Number:	1037	Serial Number:	22372
Calibration Date:	01-May-2005	Calibration Date:	22 Sep 05	Length:	4799.99 M
Calibrator Serial Number:	1009	Calibrator Serial Number:	57144	Conveyance Method: Wireline Rig Type: Offshore_Fixed	
Calibration Cable Type:	2-32ZT	Calibration Gain:	1.295		
Wheel Correction 1:	-3	Calibration Offset:	777.00		
Wheel Correction 2:	2				

Depth Control Parameters

Log Sequence:	Subsequent Trip To the Well
Reference Log Name:	Solar Log
Reference Log Run Number:	Unknown
Reference Log Date:	25 Oct 2002

Depth Control Remarks

1.
2.
3.
4.
5.
6.

DISCLAIMER

THE USE OF AND RELIANCE UPON THIS RECORDED-DATA BY THE HEREIN NAMED COMPANY (AND ANY OF ITS AFFILIATES, PARTNERS, REPRESENTATIVES, AGENTS, CONSULTANTS AND EMPLOYEES) IS SUBJECT TO THE TERMS AND CONDITIONS AGREED UPON BETWEEN SCHLUMBERGER AND THE COMPANY, INCLUDING: (a) RESTRICTIONS ON USE OF THE RECORDED-DATA; (b) DISCLAIMERS AND WAIVERS OF WARRANTIES AND REPRESENTATIONS REGARDING COMPANY'S USE OF AND RELIANCE UPON THE RECORDED-DATA; AND (c) CUSTOMER'S FULL AND SOLE RESPONSIBILITY FOR ANY INFERENCE DRAWN OR DECISION MADE IN CONNECTION WITH THE USE OF THIS RECORDED-DATA.

OTHER SERVICES1

OS1: None

OS2:

OS3:

OS4:

OS5:

REMARKS: RUN NUMBER 1

Log correlated to Solar log, dated 25 Oct 2002, provided by client

Objective:

RIH with a dummy plug to obtain HUD, pressure and temperature.

HUD = 3356m MDKB, Pressure = 3324 psi , Temp = 108 degC

Set MPBT plug at 3349m MDKB.

Due to HUD being 7m below top of seal depth, had to correlate

with a log down pass, then set the plug.

CCL to Tool Bottom = 6.6m					
Tool Bottom to Top of Seal = 0.6m					
CCL stop depth = 3349m – 7.2m = 3341.8m MDKB					
RIH with dump bailer, first run with water, followed by one run of cement giving approximately 1.0m of cement on top of plug.					
Specialists: Paul Tarrant & Joel Hogan					
Operators: Jakob Annear & Eddy Mezenberg					
Performed by Schlumberger					
RUN 1 PROGRAM VERSION: AUSL05148519 FLUID LEVEL: 13C0-300			RUN 2 PROGRAM VERSION: FLUID LEVEL:		
LOGGED INTERVAL	START	STOP	LOGGED INTERVAL	START	STOP
EQUIPMENT DESCRIPTION					
RUN 1			RUN 2		
SURFACE EQUIPMENT			SURFACE EQUIPMENT		
MPBM 81			WITM (SHM)		
DOWNHOLE EQUIPMENT			DOWNHOLE EQUIPMENT		
AH-SWBS AH-SWBS 731 AH-SWBS AH-SWBS 761 AH-SWBS AH-SWBS 762 MH-SWHS MH-SWHS 736 CCL-L CCL-L 4195 MPSU-CA MPSU-CA 1011	 CCL Tachomete Cable Cur Head Volt Tension	12.02 11.34 10.65 9.97 9.64 9.18	AH-SWBS AH-SWBS AH-SWBS MH-SWHS MH-SWHS 753 CCL-L CCL-L 4195 AH-DB-TT AH-DB-TT	 Tension CCL TOOL ZERO	14.84 14.53 14.23 13.92 13.44 12.98

MPEX-EA_S
MPEX-EA_S

2.77

TOOL BOTTOM

MAXIMUM STRING DIAMETER 2.13 IN
MEASUREMENTS RELATIVE TO TOOL ZERO
ALL LENGTHS IN METERS

SHM_GUN
GUN

0.79

TOOL BOTTOM

MAXIMUM STRING DIAMETER 2.13 IN
MEASUREMENTS RELATIVE TO TOOL ZERO
ALL LENGTHS IN METERS

Client: ExxonMobil

Well: FLA A-21a

Field: Flounder

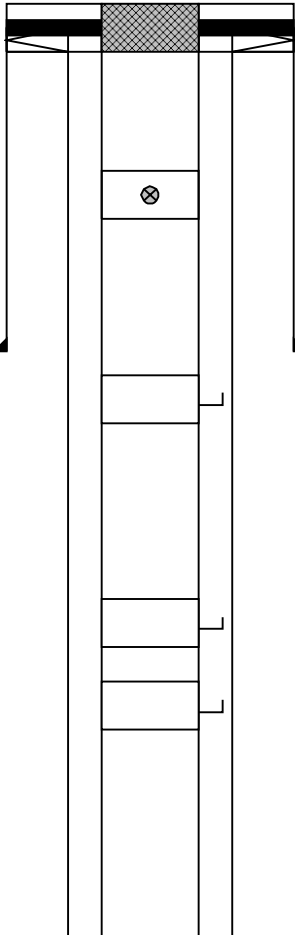
State: Victoria

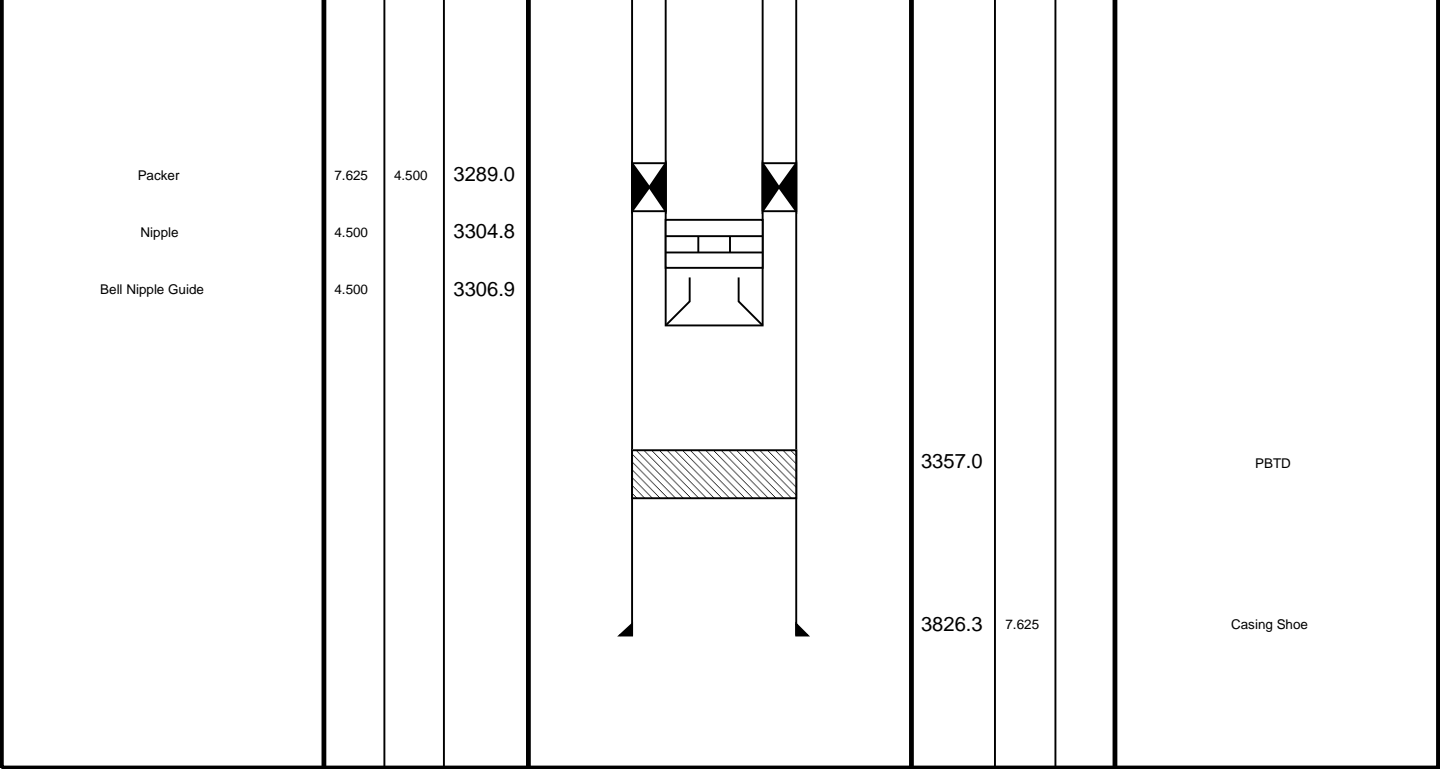
Country: Australia

Rig Name: Flounder

Reference Datum: Kelly Bushing

Elevation: 40.8 m

Production String	(in)		(m)	Well Schematic	(m)		(in)	Casing String
	OD	ID	MD		MD	OD	ID	
Tubing Hanger Tubing	13.375	4.500	19.3		20.4	13.375	7.625	Casing String Liner Hanger
	4.500		19.3		20.4	13.375	7.625	
Shutin Valve	4.500		450.1					
Gas Lift Mandrel	4.500		950.5		750.0	13.375		Casing Shoe
Gas Lift Mandrel	4.500		1660.7					
Gas Lift Mandrel	4.500		1814.2					



Dump Bailer
Run 2 – Cement

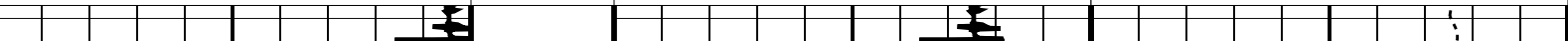
MAXIS Field Log

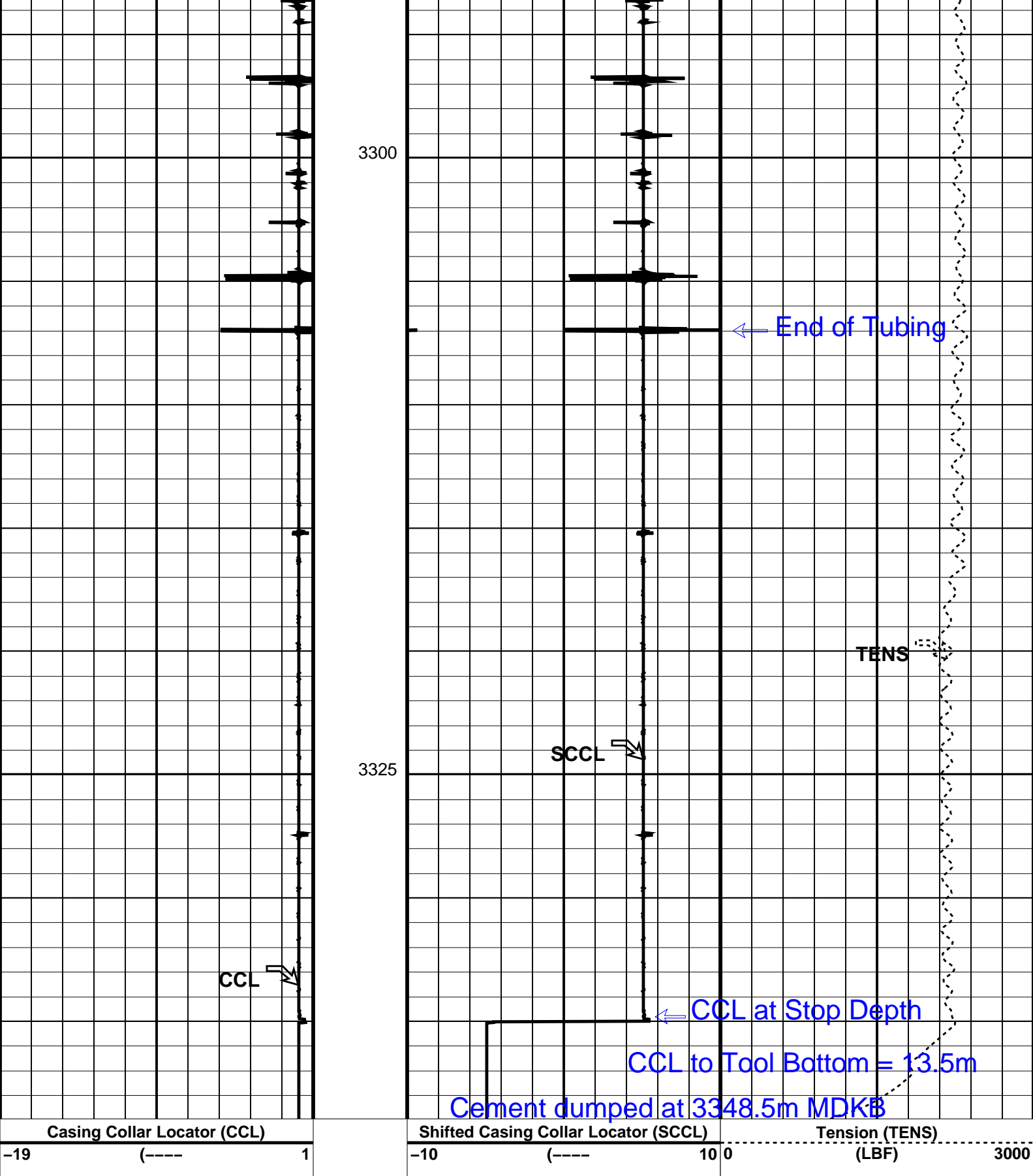
Company: ExxonMobil Well: TNA A-12

Input DLIS Files						
DEFAULT	PERFO_055LUP	FN:53	PRODUCER	22-Nov-2005 17:34	3339.4 M	3292.5 M
Output DLIS Files						
DEFAULT	PERFO_056PUP	FN:54	PRODUCER	22-Nov-2005 17:41	3338.9 M	3292.6 M

OP System Version: 13C0-300						
MCM						
SHM_GUN	SRC-2820-ASFS-WPP_t	CCL-L	13C0-300			


Casing Collar Locator (CCL)				Shifted Casing Collar Locator (SCCL)				Tension (TENS)			
-19	(----	1		-10	(----	10	0	(LBF)			3000





Parameters			
DLIS Name	Description	Value	
CCLD CCLT	CCL-L: Casing Collar Locator		
	CCL reset delay	12	IN
	CCL Detection Level	0.3	V
System and Miscellaneous			
DO	Depth Offset for Playback	-0.4	M
PP	Playback Processing	NORMAL	

OP System Version: 13C0-300						
MCM						
SHM_GUN	SRC-2820-ASFS-WPP_t	CCL-L	13C0-300			
Input DLIS Files						
DEFAULT	PERFO_055LUP	FN:53	PRODUCER	22-Nov-2005 17:34	3339.4 M	3292.5 M
Output DLIS Files						
DEFAULT	PERFO_056PUP	FN:54	PRODUCER	22-Nov-2005 17:41		



Dump Bailer
Run 1 – Water

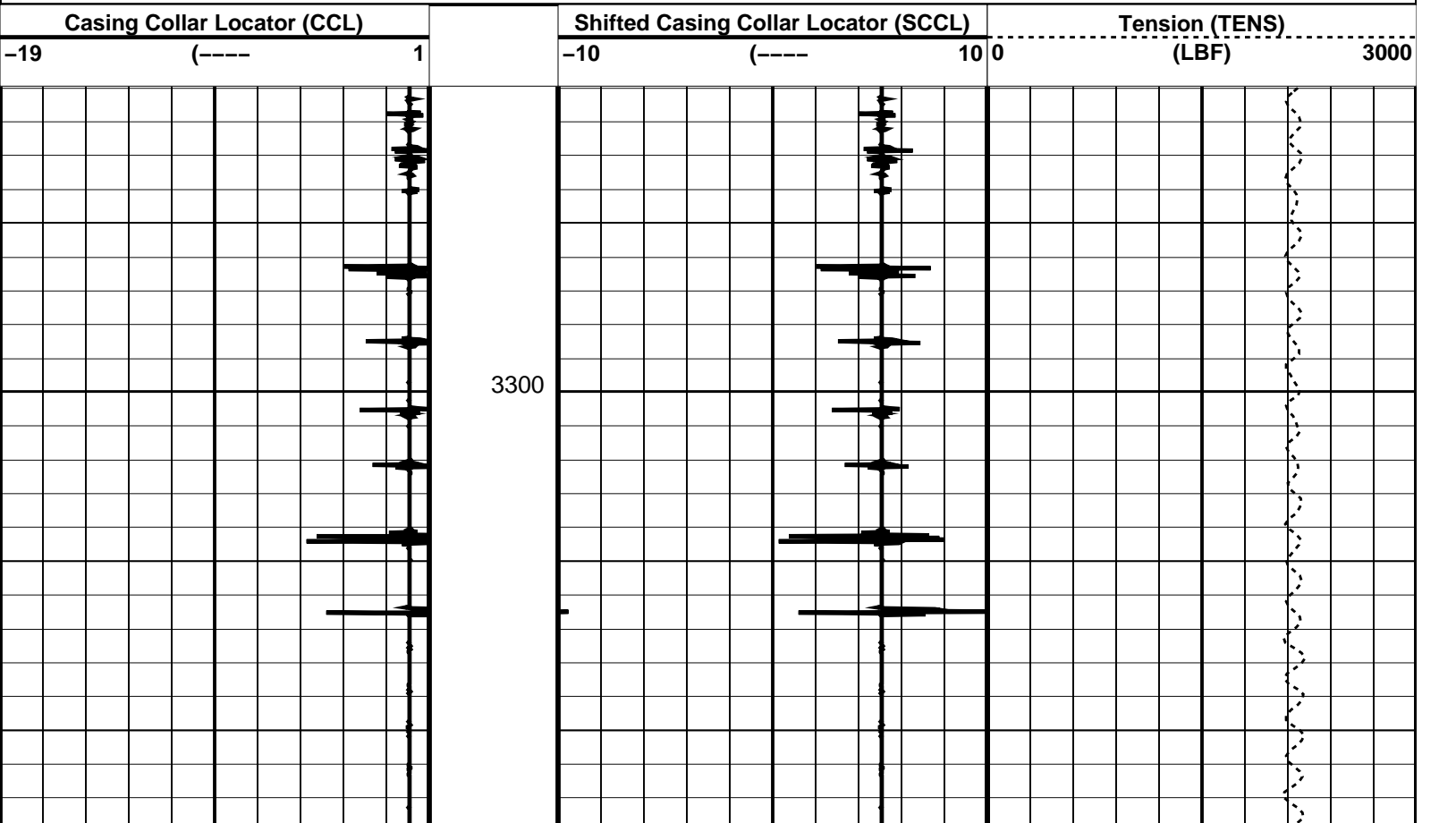
MAXIS Field Log

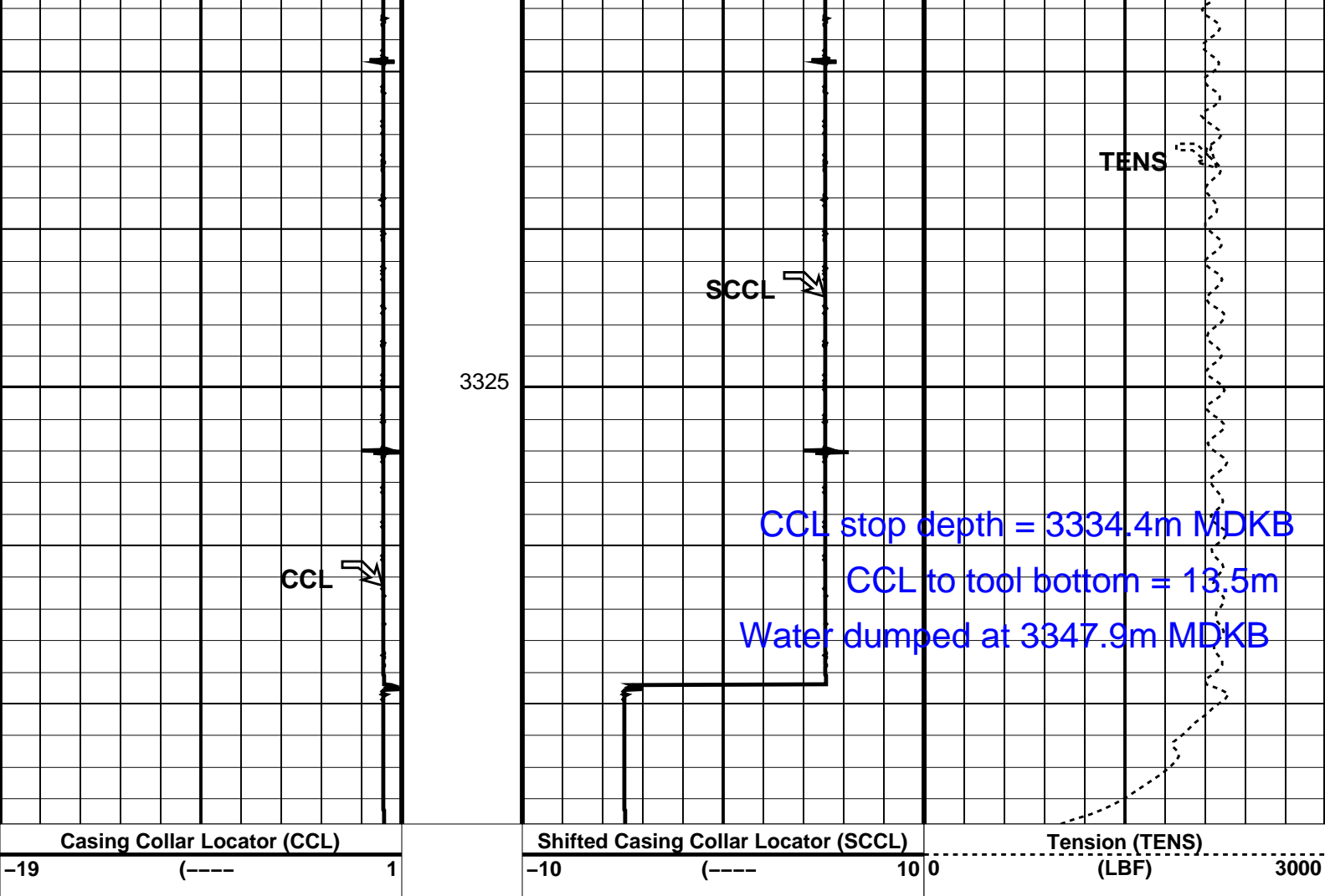
Company: ExxonMobil

Well: TNA A-12

Output DLIS Files					
DEFAULT	PERFO_054LUP	FN:52	PRODUCER	22-Nov-2005 15:57	3338.8 M 3290.8 M

OP System Version: 13C0-300					
MCM					
SHM_GUN	SRC-2820-ASFS-WPP_k	CCL-L	13C0-300		





Parameters

DLIS Name	Description	Value
CCL-L: Casing Collar Locator		
CCLD	CCL reset delay	12 IN
CCLT	CCL Detection Level	0.3 V

Format: PERFO Vertical Scale: 1:200 Graphics File Created: 22-Nov-2005 15:57

OP System Version: 13C0-300

MCM

SHM_GUN SRC-2820-ASF5-WPP_t CCL-L 13C0-300

Output DLIS Files

DEFAULT PERFO_054LUP FN:52 PRODUCER 22-Nov-2005 15:57

Schlumberger

7 5/8" MPBT Plug
Setting Pass

MAXIS Field Log

Output DLIS Files

OP System Version: 13C0-300

MCM

MPEX-EA_S
CCL-L

SRC-2820-ASFS-WPP_1
13C0-300

MPSU-CA

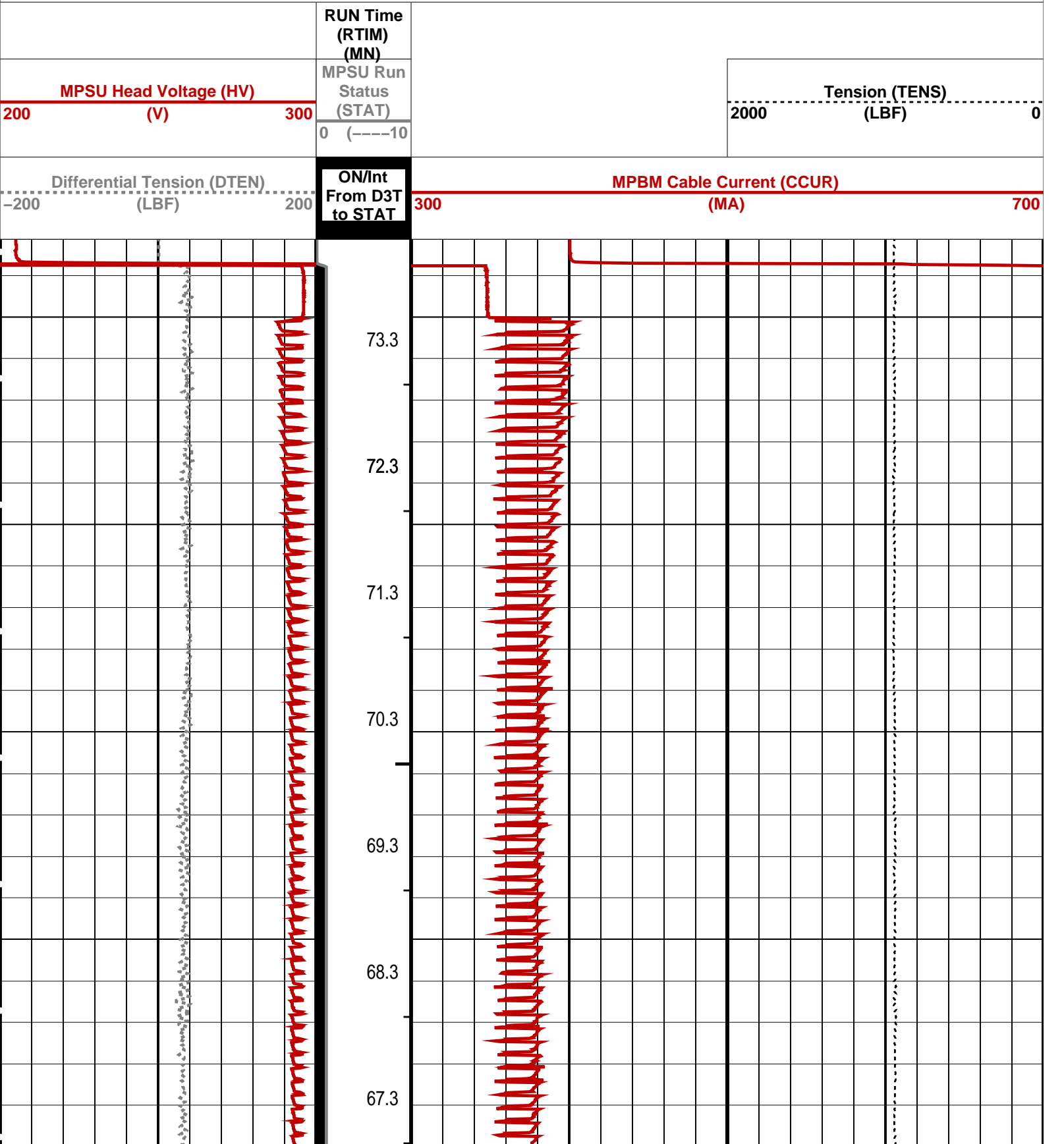
SRC-2820-ASFS-WPP_1

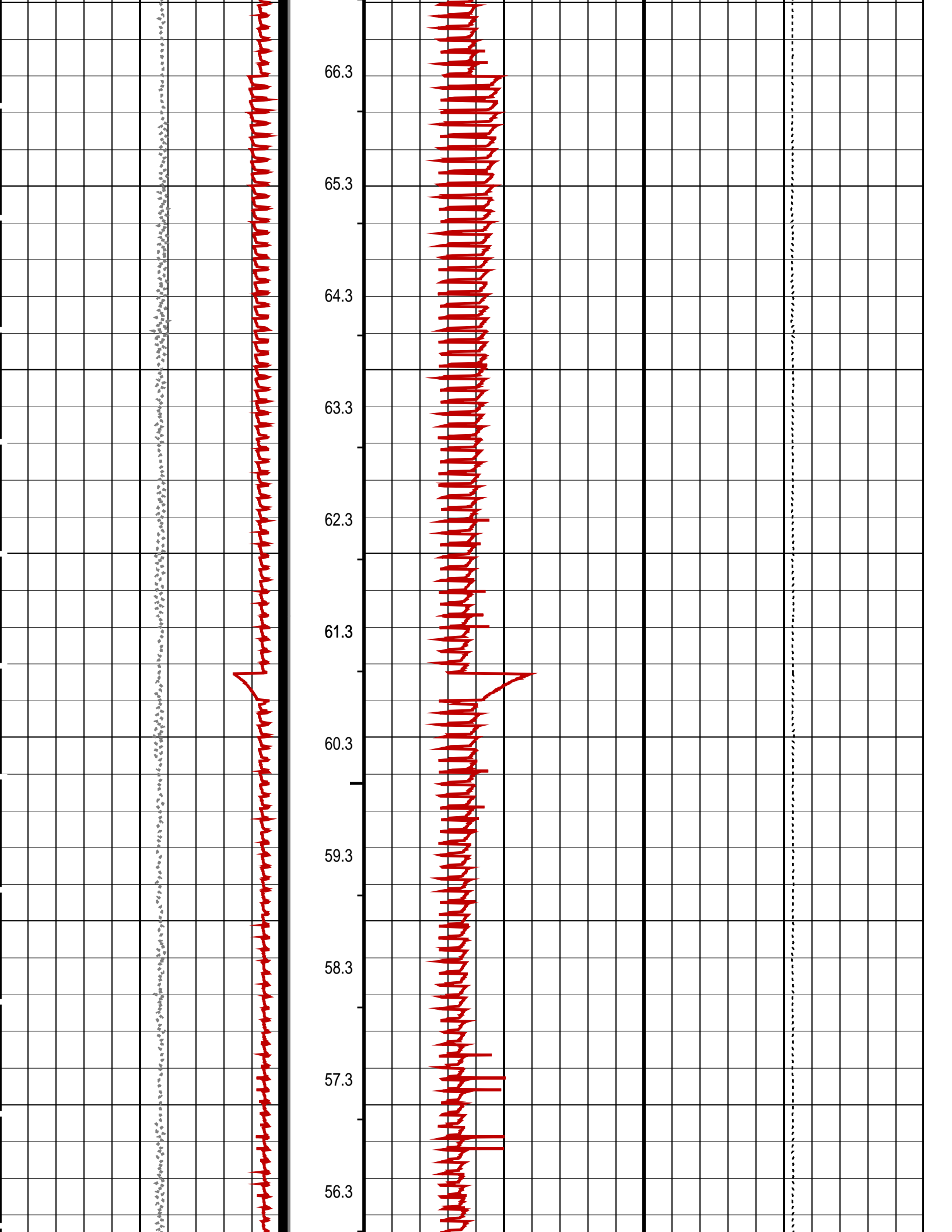
PIP SUMMARY

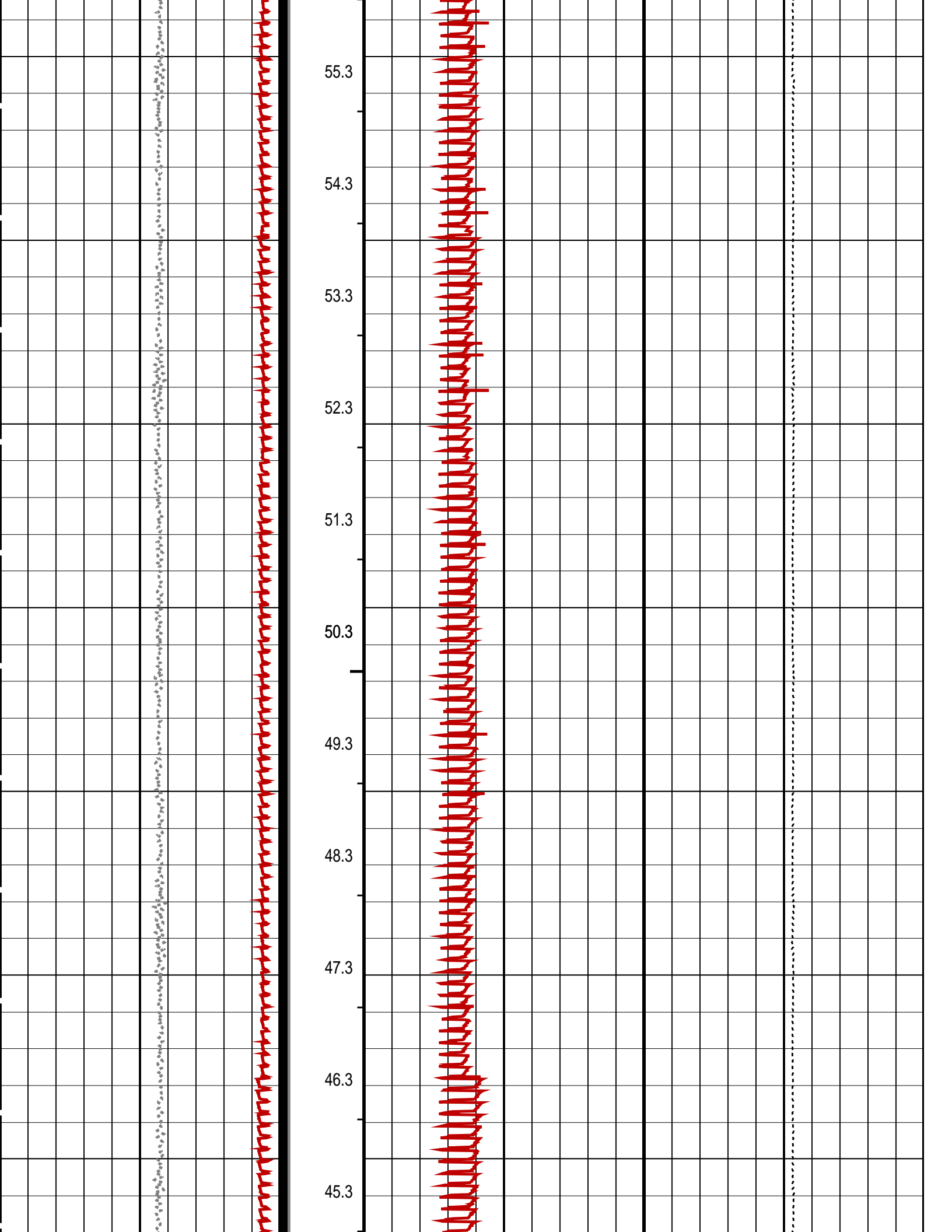
⌞ MPSU Run Time Every 1 MN

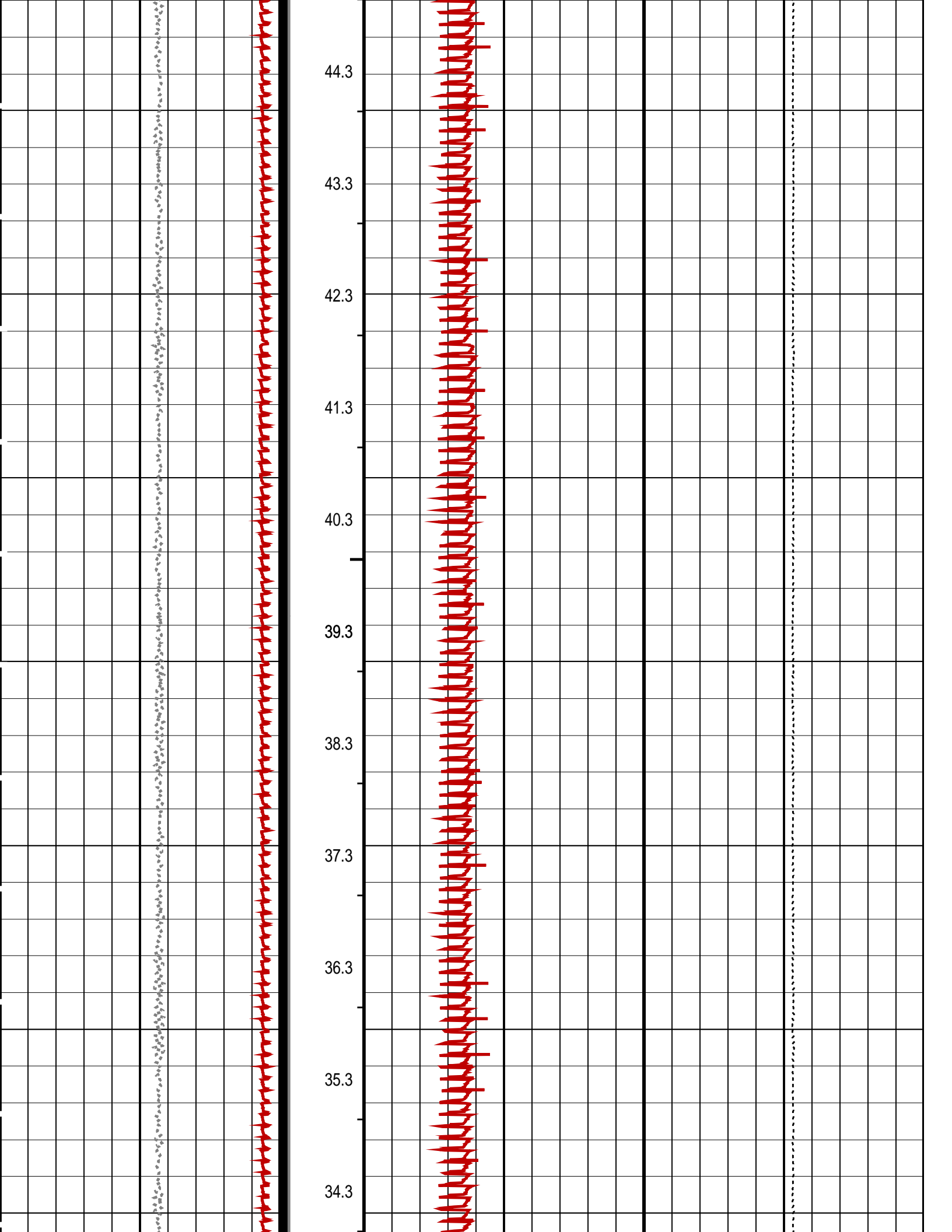
⌞ MPSU Run Time Every 10 MN

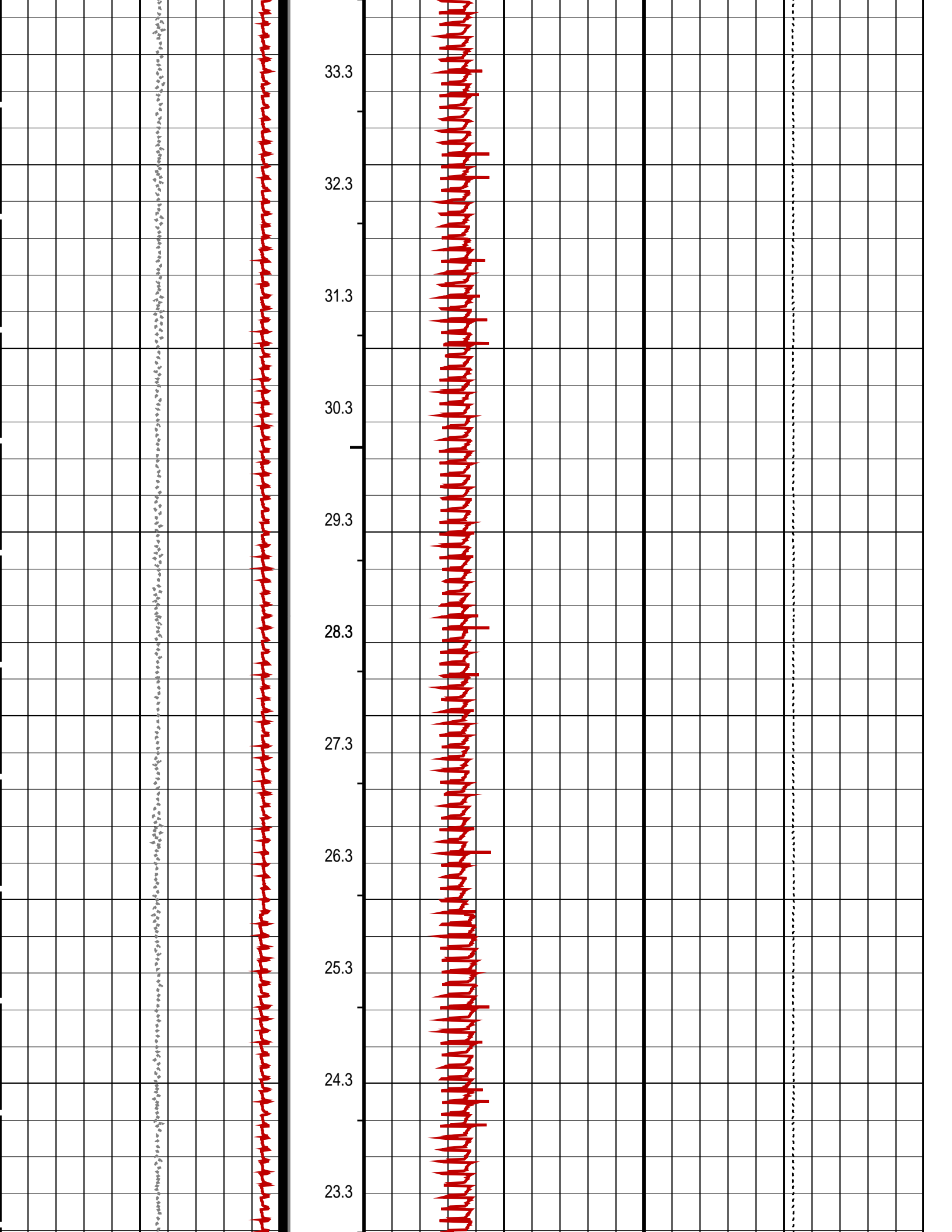
■ Time Mark Every 60 S

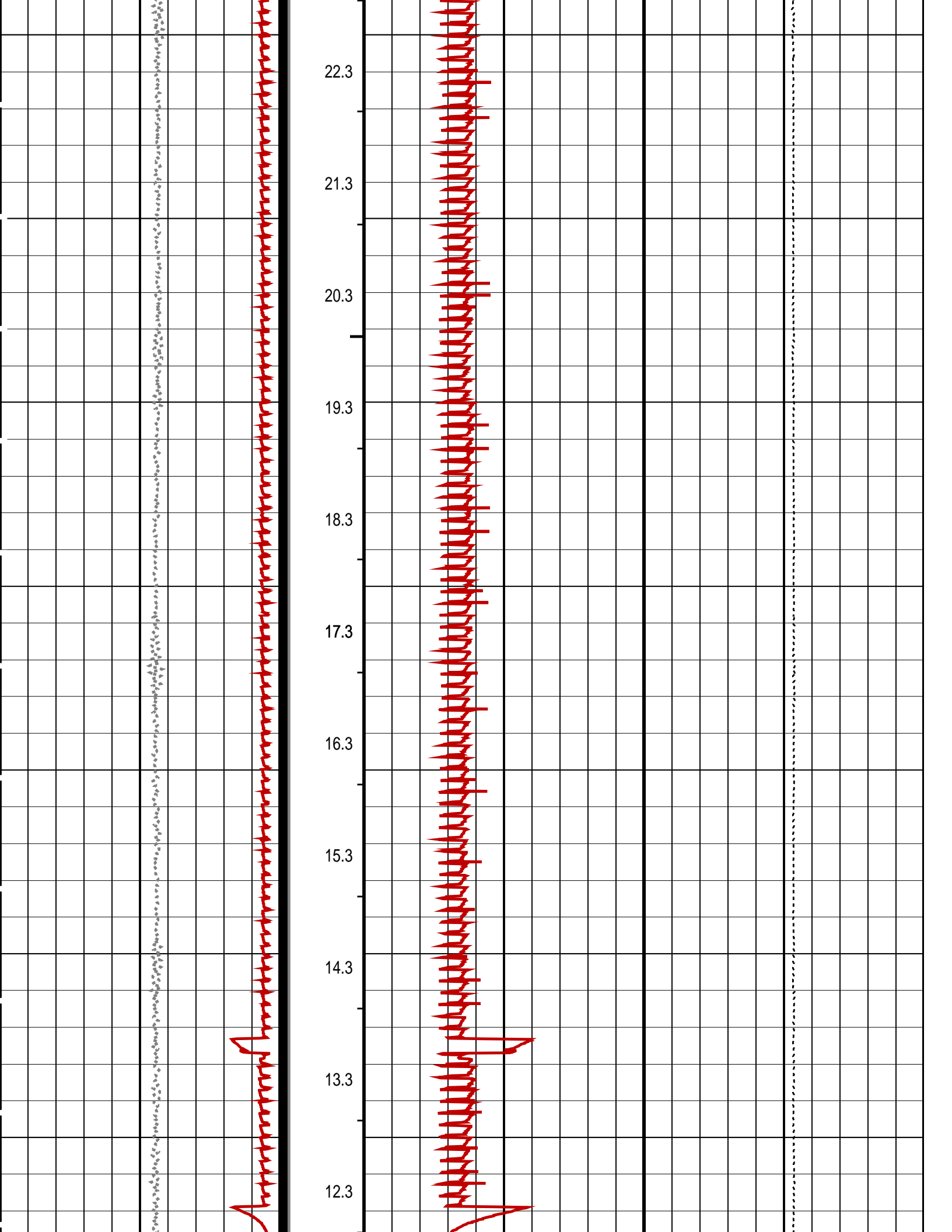


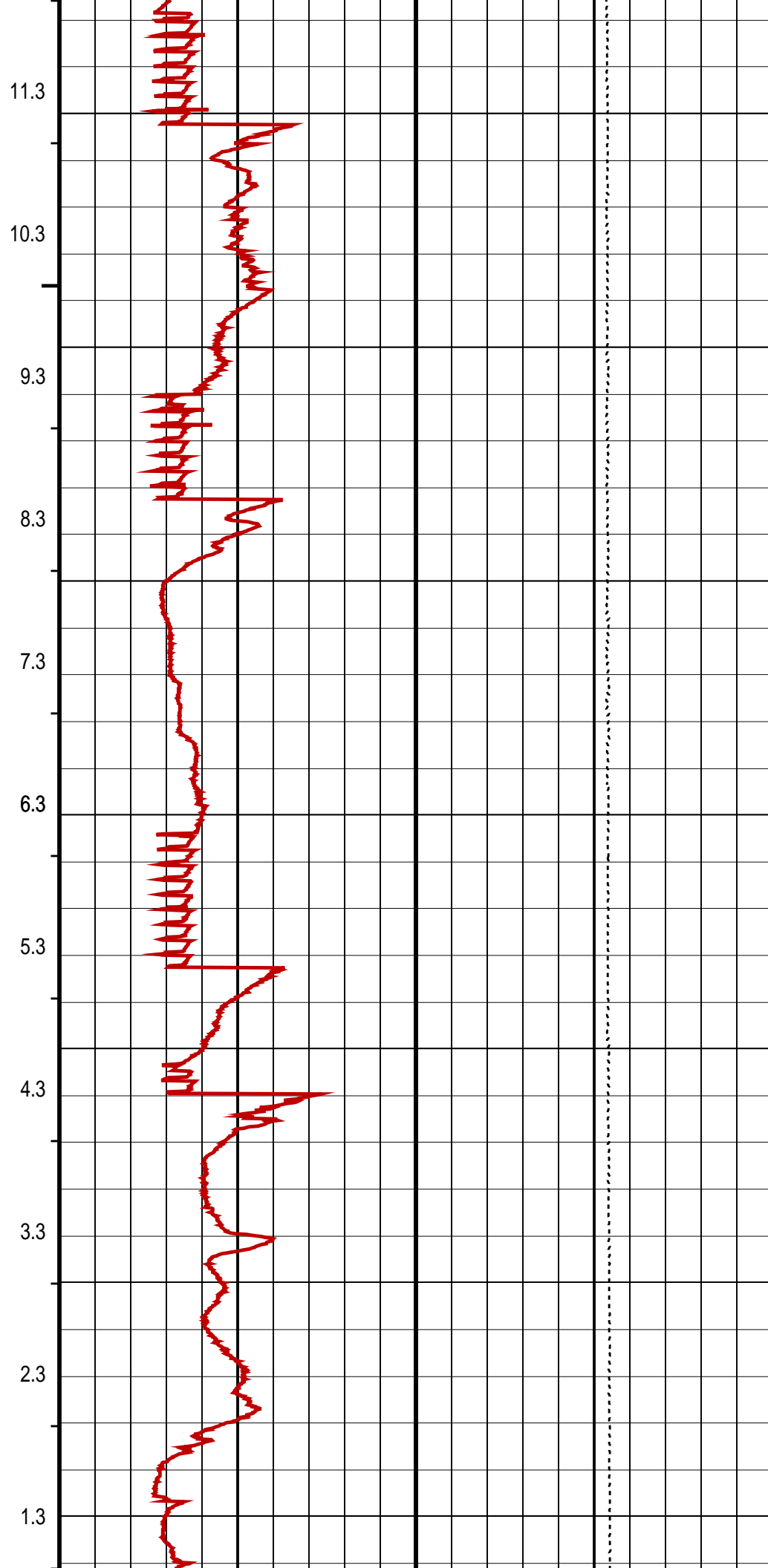
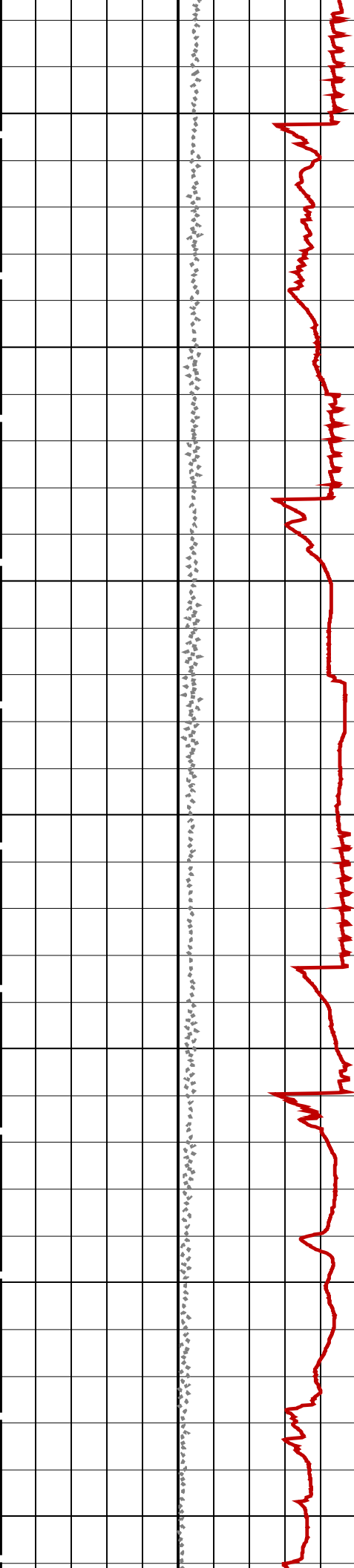


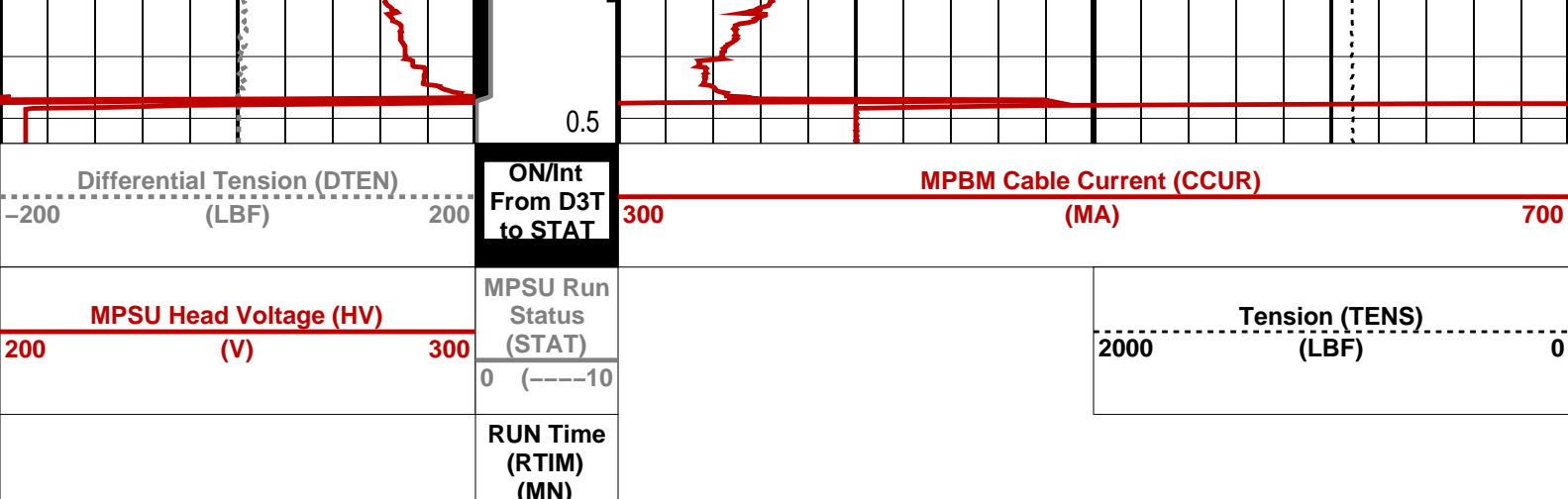












PIP SUMMARY

→ MPSU Run Time Every 1 MN

→ MPSU Run Time Every 10 MN

Time Mark Every 60 S

Parameters		
DLIS Name	Description	Value
IPUMP	MPSU-CA: MECHANICAL PLUGBACK SETTING UNIT Intensifier Pump	TRUE
Format: MPBT Vertical Scale: 1:600 Graphics File Created: 22-Nov-2005 12:22		


OP System Version: 13C0-300

MCM

MPEX-EA_S SRC-2820-ASFS-WPP_t MPSU-CA SRC-2820-ASFS-WPP_t

CCL-L 13C0-300

Output DLIS Files		
DEFAULT	CCL_050LUP	FN:48 PRODUCER 22-Nov-2005 12:22



7 5/8" MPBT Plug
Correlation Pass

MAXIS Field Log

Input DLIS Files		
DEFAULT	Flip_CCL_064LUP	PRODUCER 23-Nov-2005 06:38 3344.9 M 3290.6 M
Output DLIS Files		
DEFAULT	CCL_067PUP	FN:62 PRODUCER 23-Nov-2005 06:41 3344.9 M 3291.1 M

OP System Version: 13C0-300

MCM

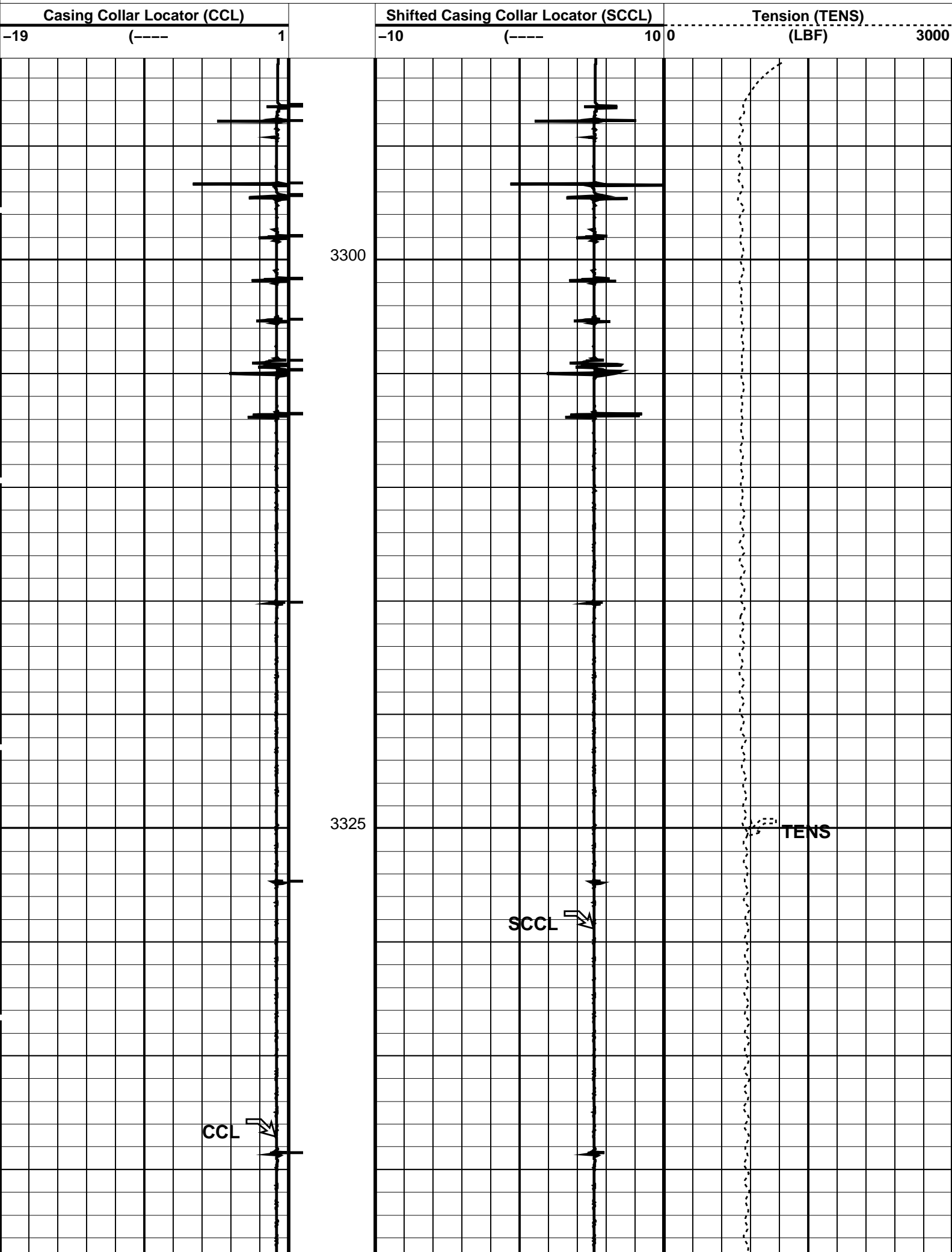
MPEX-EA_S SRC-2820-ASFS-WPP_t MPSU-CA SRC-2820-ASFS-WPP_t

CCL-L 13C0-300

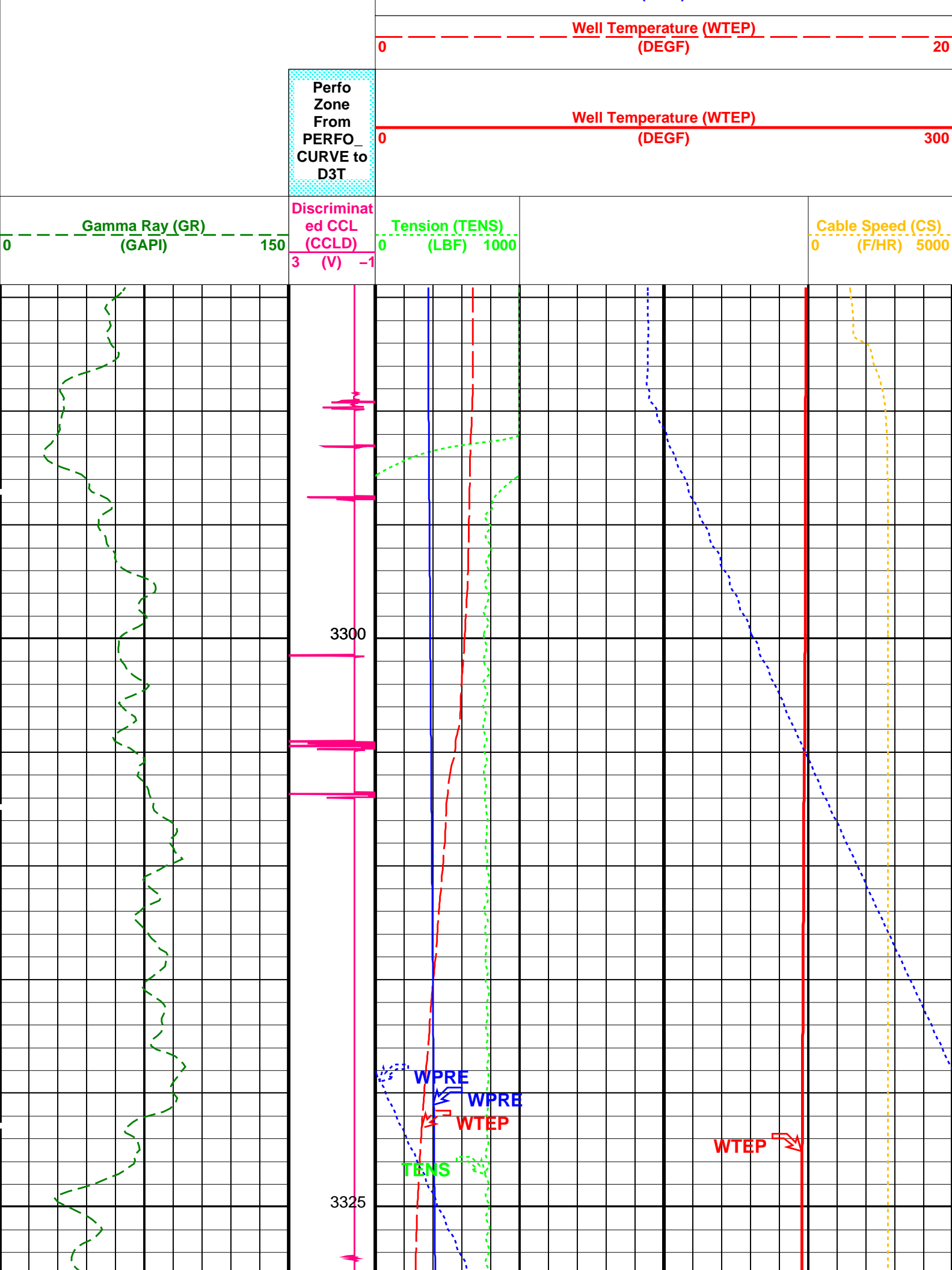
PIP SUMMARY

→ Casing Collars

Time Mark Every 60 S



	Amplified Well Pressure (WPRE)	
	0	50
	(PSIA)	
	Well Pressure (WPRE)	
	0	3000
	(PSIA)	





Gamma Ray (GR) (GAPI)	Discriminat ed CCL (CCLD) (V)	Tension (TENS) (LBF)	Cable Speed (CS) (F/HR)
0 150	3 -1	0 1000	0 5000

Perfo Zone From PERFO_ CURVE to D3T	Well Temperature (WTEP) (DEGF)		0 300
	Well Temperature (WTEP) (DEGF)		0 20
	Well Pressure (WPRE) (PSIA)		0 3000
	Amplified Well Pressure (WPRE) (PSIA)		0 50

PIP SUMMARY

Time Mark Every 60 S
Format: PSP_1 Vertical Scale: 1:200 Graphics File Created: 23-Nov-2005 06:35

OP System Version: 13C0-300
MCM

PSPT-A/B 13C0-300

Parameters

DLIS Name	Description	Value
DO PP	System and Miscellaneous Depth Offset for Playback Playback Processing	0.0 M NORMAL

Input DLIS Files

DEFAULT	Flip_PSP_062LUP	PRODUCER	23-Nov-2005 06:30	3349.0 M	3283.9 M
---------	-----------------	----------	-------------------	----------	----------

Output DLIS Files

Company: ExxonMobil

Well: FLA A-21a

Field: Flounder

Rig: Prod 4

Country: Australia

Schlumberger

Dummy Plug

7 5/8" MPBT Plug

Dump Bailer Record