

Company: Esso Australia Ltd.

Well: WKF W-4

Field: West Kingfish

Rig: ISS Rig 22 / Prod 2 Country: Australia

1 11/16" String shot
1 3/8" Owen Split Shot
Scale 1:200

ISS Rig 22 / Prod 2

Rig: West Kingfish

Location: Gippsland Basin

Well: WKF W-4

Company: Esso Australia Ltd.

LOCATION

Gippsland Basin
Bass Strait

Elev.: K.B. 34.2 m
G.L. -59.4 m
D.F. 34.2 m

Permanent Datum: _____
Log Measured From: Kelly Bushing _____
Drilling Measured From: Kelly Bushing _____

Elev.: 34.2 m
-34.2 m above Perm. Datum

State: Victoria

Max. Well Deviation 58 deg

Longitude 148 06' 15.09" E

Latitude 38 35' 40.26" S

Logging Date			20-Oct-2005						
Run Number			1,2&3						
Depth Driller			3490 m						
Schlumberger Depth			3490 m						
Bottom Log Interval			3211 m						
Top Log Interval			3211 m						
Casing Fluid Type			Weighted Brine						
Salinity									
Density			8.55 lbm/gal						
Fluid Level			0 m						
BIT/CASING/TUBING STRING									
Bit Size			8.500 in						
From			0 m						
To			3490 m						
Casing/Tubing Size			3.500 in						
Weight			9.3 lbm/ft						
Grade			N-80						
From			0 m						
To			3332 m						
Maximum Recorded Temperatures									
Logger On Bottom		Time	20-Oct-2005			23:00			
Unit Number	Location		3827		VEA				
Recorded By			K. Aung						
Witnessed By			M. Wilson, B. Woodward						

PVT DATA				Run 1	Run 2	Run 3
Oil Density						
Water Salinity						
Gas Gravity						
Bo						
Bw						
1/Bg						
Bubble Point Pressure						
Bubble Point Temperature						
Solution GOR						
Maximum Deviation				58 deg		
CEMENTING DATA						
Primary/Squeeze				Primary		
Casing String No						
Lead Cement Type						
Volume						
Density						
Water Loss						
Additives						
Tail Cement Type						
Volume						
Density						
Water Loss						
Additives						
Expected Cement Top						
Logging Date						
Run Number						
Depth Driller						
Schlumberger Depth						
Bottom Log Interval						
Top Log Interval						
Casing Fluid Type						
Salinity						
Density						
Fluid Level						
BIT/CASING/TUBING STRING						
Bit Size						
From						
To						
Casing/Tubing Size						
Weight						
Grade						
From						
To						
Maximum Recorded Temperatures						
Logger On Bottom		Time				
Unit Number	Location					
Recorded By						
Witnessed By						

DEPTH SUMMARY LISTING

Date Created: 12-OCT-2005 20:56:11

Depth System Equipment

Depth Measuring Device	Tension Device	Logging Cable
Type: IDW-H Serial Number: 794 Calibration Date: 31-May-05 Calibrator Serial Number: 1 Calibration Cable Type: 2-32ZT Wheel Correction 1: -6 Wheel Correction 2: -5	Type: CMTD-B/A Serial Number: 1711 Calibration Date: 22-Sep-05 Calibrator Serial Number: 57144 Calibration Gain: 0.97 Calibration Offset: 200.00	Type: 2-32ZT Serial Number: 24031 Length: 6380.07 M Conveyance Method: Wireline Rig Type: Offshore_Fixed

Depth Control Parameters

Log Sequence:	Subsequent Trip To the Well
Reference Log Name:	Solar Log
Reference Log Run Number:	Unknown
Reference Log Date:	Unknown
Subsequent Trip Down Log Correction:	-50000.00 M

Depth Control Remarks











1.
2.
3.
4.
5.
6.

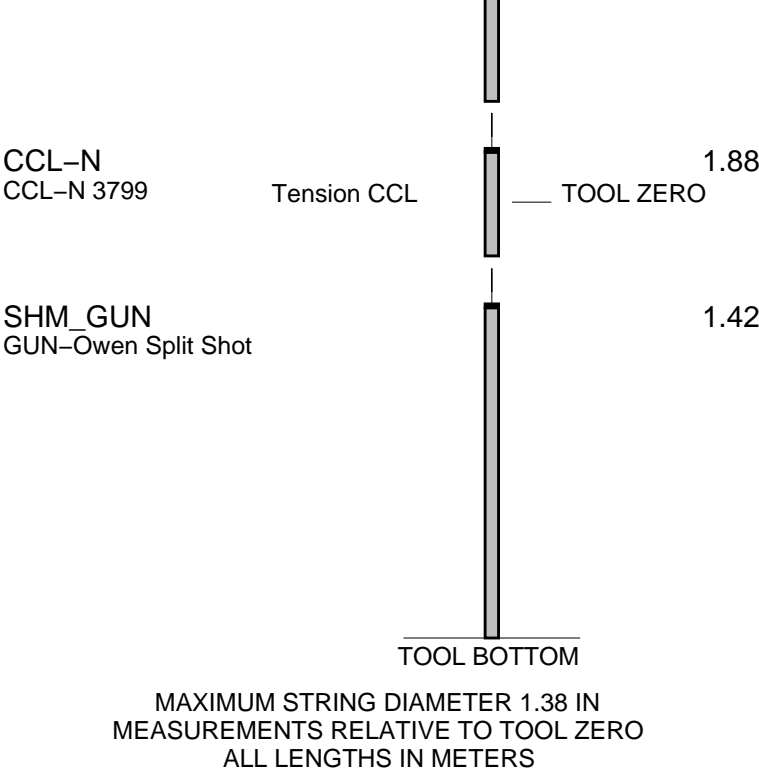
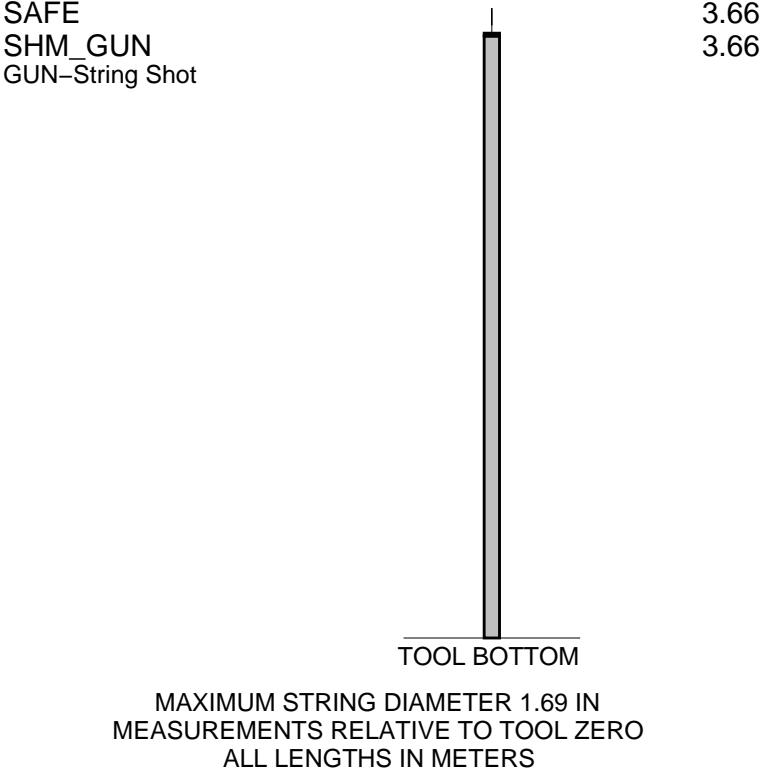
DISCLAIMER

THE USE OF AND RELIANCE UPON THIS RECORDED-DATA BY THE HEREIN NAMED COMPANY (AND ANY OF ITS AFFILIATES, PARTNERS, REPRESENTATIVES, AGENTS, CONSULTANTS AND EMPLOYEES) IS SUBJECT TO THE TERMS AND CONDITIONS AGREED UPON BETWEEN SCHLUMBERGER AND THE COMPANY, INCLUDING: (a) RESTRICTIONS ON USE OF THE RECORDED-DATA; (b) DISCLAIMERS AND WAIVERS OF WARRANTIES AND REPRESENTATIONS REGARDING COMPANY'S USE OF AND RELIANCE UPON THE RECORDED-DATA; AND (c) CUSTOMER'S FULL AND SOLE RESPONSIBILITY FOR ANY INFERENCE DRAWN OR DECISION MADE IN CONNECTION WITH THE USE OF THIS RECORDED-DATA.

OTHER SERVICES1 OS1: GR-CCL OS2: OS3: OS4: OS5:	OTHER SERVICES2 OS1: OS2: OS3: OS4: OS5:
REMARKS: RUN NUMBER 1 Log correlated to Tubing Tally.	REMARKS: RUN NUMBER 2
Objective: To reterive the failed 3.5" Tubing.	
GR-CCL run prior to String shot to confirm the access to required depth. String shot was run to clean out the tubing before Split shot. Tubing was not on tension while shooting Owen Split shot.	

Fubing was not on tension while shooting Owen Split shot.					
Shot at the joint @ 3211.1m.					
Specialists: K. K Aung,					
Operators: P. Battams, A. Hall (days)					
B. Glover, J. Gordon (nights)					
Performed by Schlumberger.					
RUN 1			RUN 2		
SERVICE ORDER #:		AUSL 05183644	SERVICE ORDER #:		
PROGRAM VERSION:		13C0-300	PROGRAM VERSION:		
FLUID LEVEL:		0 m	FLUID LEVEL:		
LOGGED INTERVAL	START	STOP	LOGGED INTERVAL	START	STOP

EQUIPMENT DESCRIPTION					
RUN 1			RUN 2		
SURFACE EQUIPMENT			SURFACE EQUIPMENT		
SHM-EA			SHM-EA		
DOWNHOLE EQUIPMENT			DOWNHOLE EQUIPMENT		
MH-22 MH-22		9.75	MH-22 MH-22		6.02
EQF-43 EQF-43		9.27	SAFE EQF-41 EQF-41		5.54 5.54
EQF-43 EQF-43		7.44	EQF-41 EQF-41		4.32
PGGT-C PGGC 292 PGGH-A 292		5.61	EQF-41 EQF-41		3.10
Gamma Ray		0.48			
Casing Co Tension		TOOL ZERO			



Client: Esso Australia LTD

Well: W-4

Field: West Kingfish

State: Victoria

Country: Australia

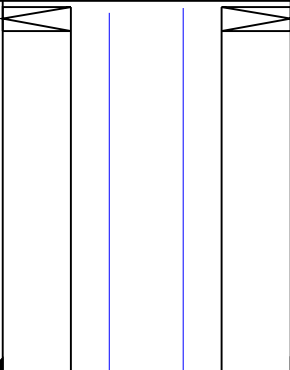
Rig Name: R-22

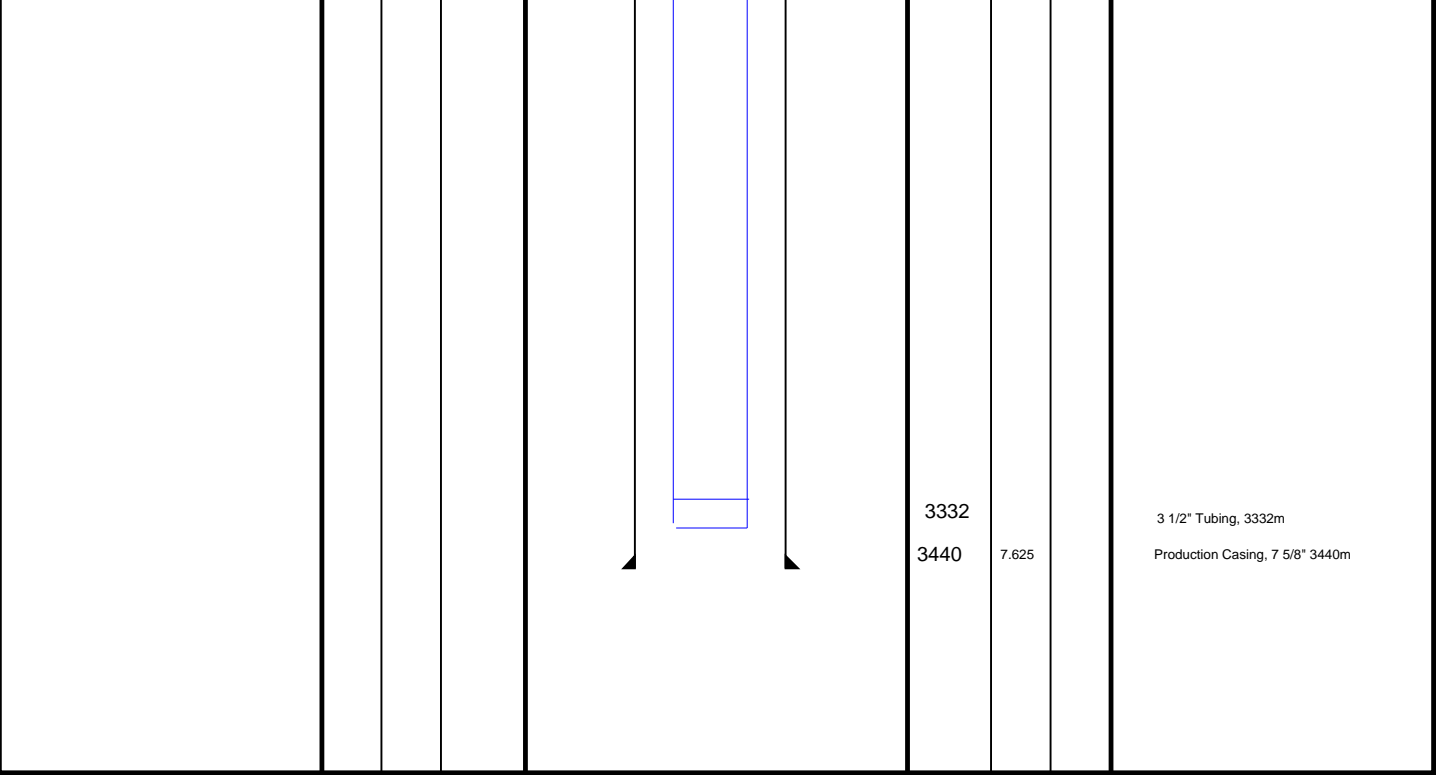
Reference Datum: Mean Sea Level

Elevation:

Drawing Date: 10/17/2005

API #:

Production String	(in)		(m)		Well Schematic			(m)		(in)		Casing String
	OD	ID	MD			MD	OD	ID				
							13.0	10.750		Casing String Liner Hanger		
							13.0	10.750	5.625			
							799	10.750		Surface Casing 10 3/4, 799m		



GR-CCL Log
Scale 1:200

MAXIS Field Log

Company: Well:

Output DLIS Files

DEFAULT PERFO_006LUP FN:5 PRODUCER 20-Oct-2005 22:50

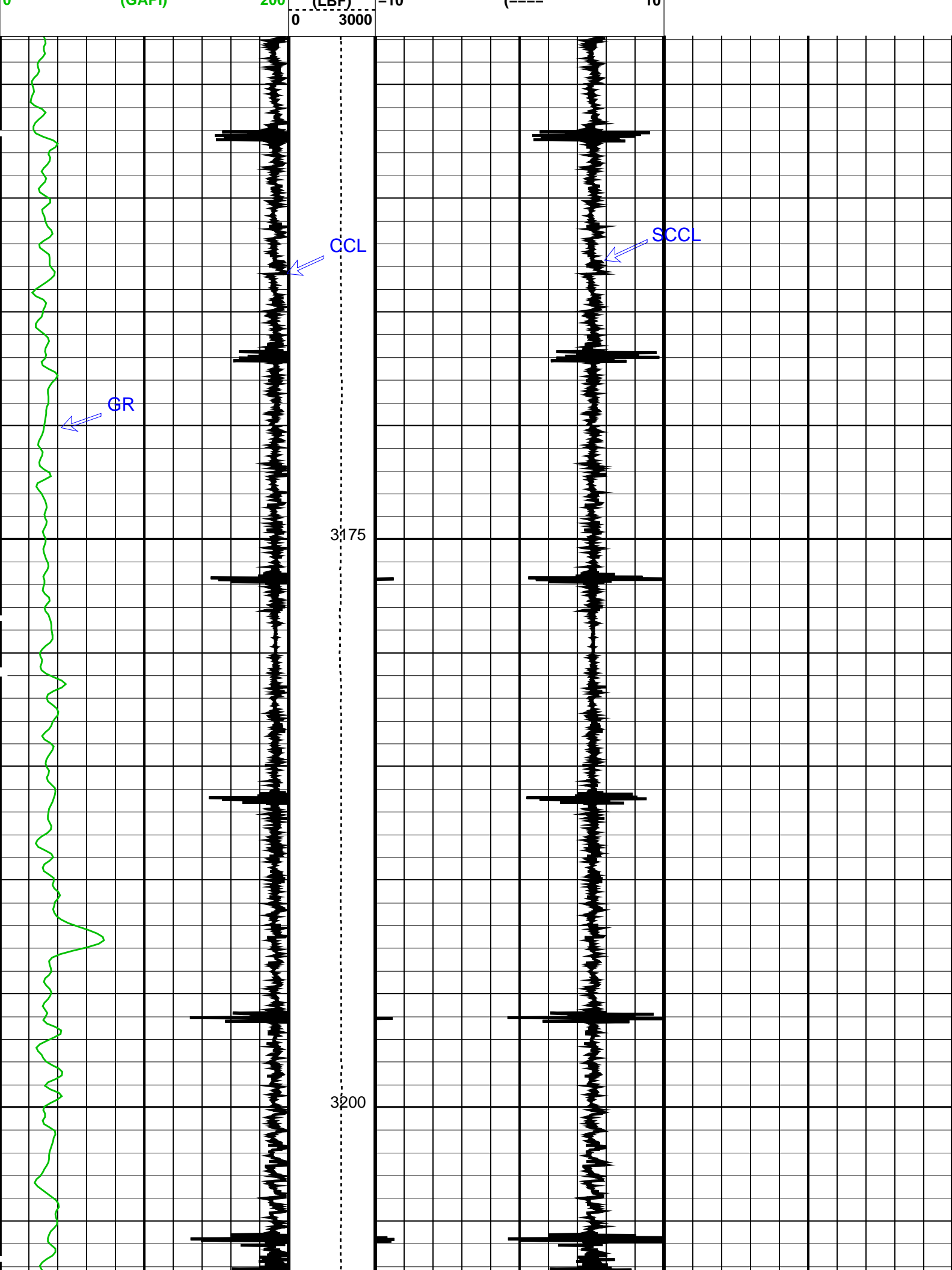
OP System Version: 13C0-300
MCM

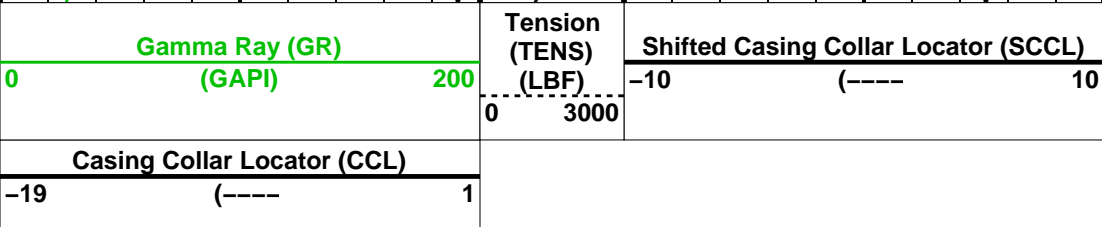
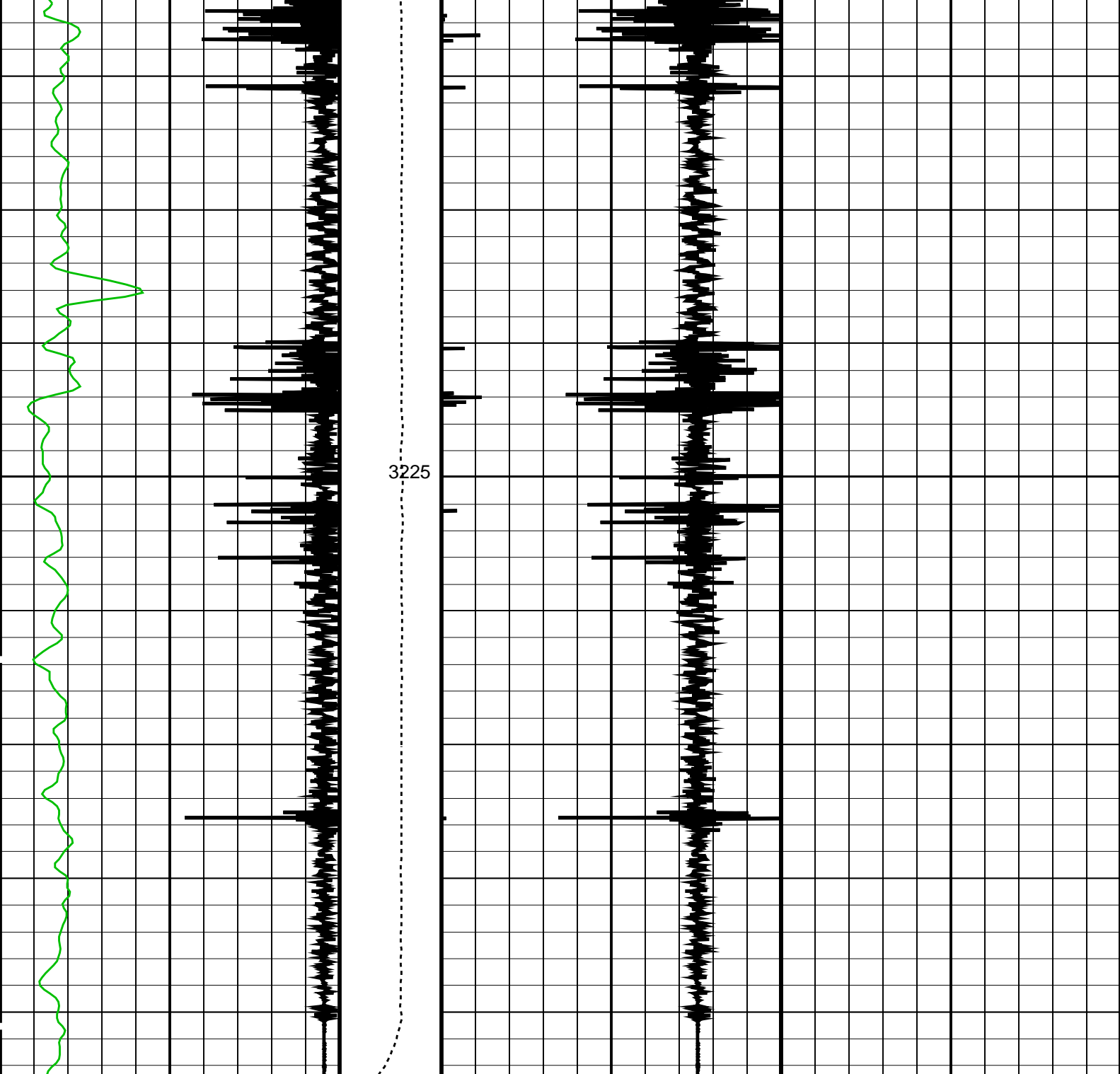
SHM_GUN PTC-2789-NUCL PGGT-C PTC-2789-NUCL

PIP SUMMARY

Time Mark Every 60 S

Casing Collar Locator (CCL)			Tension (TENS) (LBS)	Shifted Casing Collar Locator (SCCL)
-19	(----	1		
Gamma Ray (GR) (GAPI)				
0		200	10	10





PIP SUMMARY

 Time Mark Every 60 S

Format: PERFO_1 Vertical Scale: 1:200

Graphics File Created: 20-Oct-2005 22:50

OP System Version: 13C0-300
MCM

SHM_GUN

PTC-2789-NUCL

PGGT-C

PTC-2789-NUCL

Output DLIS Files

Schlumberger

1 11/16" String Shot
Scale 1:200

MAXIS Field Log

PERFO2 Operational Summary Listing

Device	Status	Req Depth (M)	Obs Depth (M)	Time Used
GUN1	Used	3211.1	3211.0	Fri Oct 21 03:13:06 2005

Company: Esso Australia Ltd.

Well: WKF W-15

Output DLIS Files

DEFAULT

PERFO_013LUP

FN:12

PRODUCER

21-Oct-2005 02:50

OP System Version: 13C0-300
MCM

SHM_GUN

PTC-2789-NUCL

SAFE

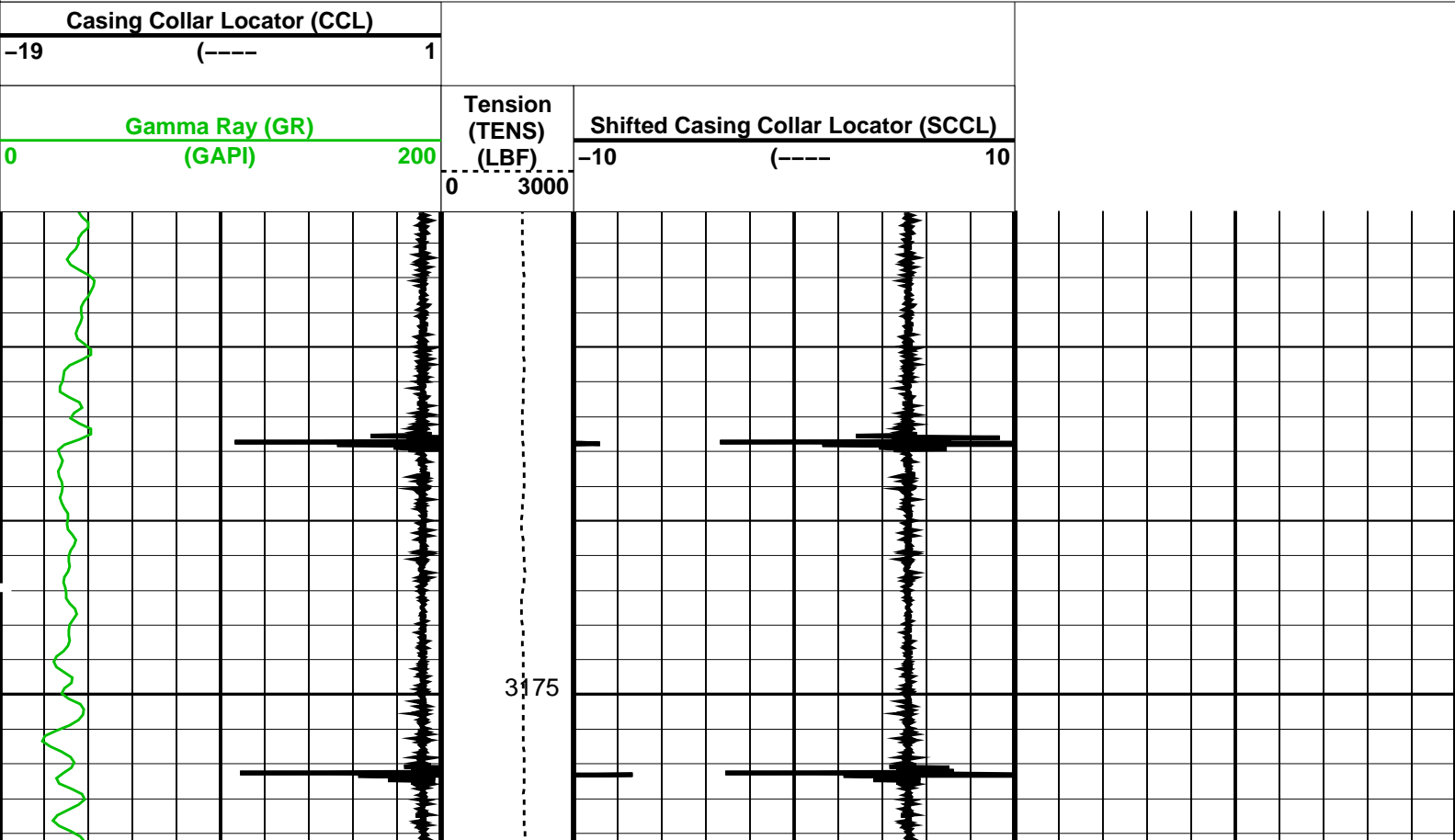
PTC-2789-NUCL

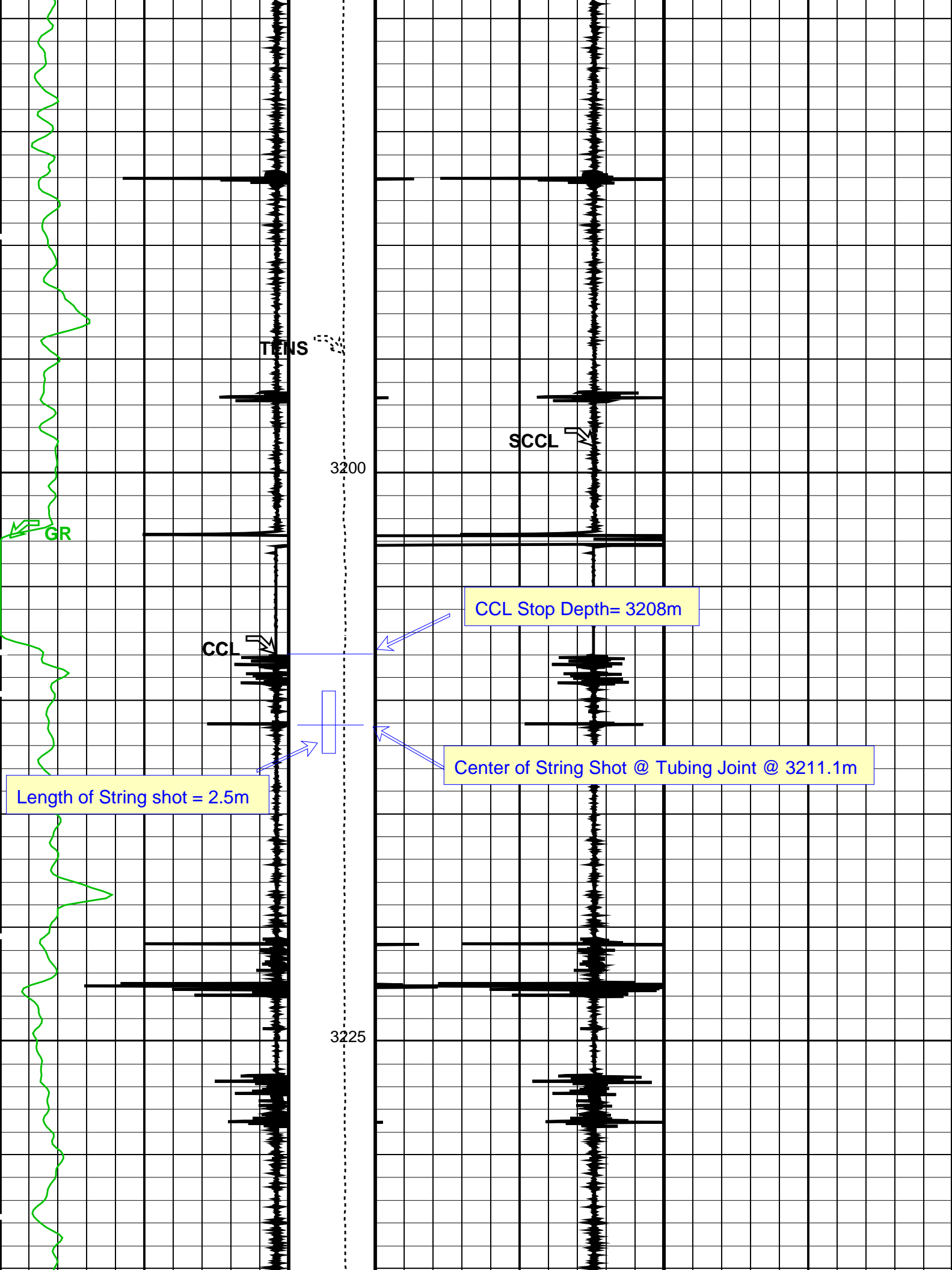
PGGT-C

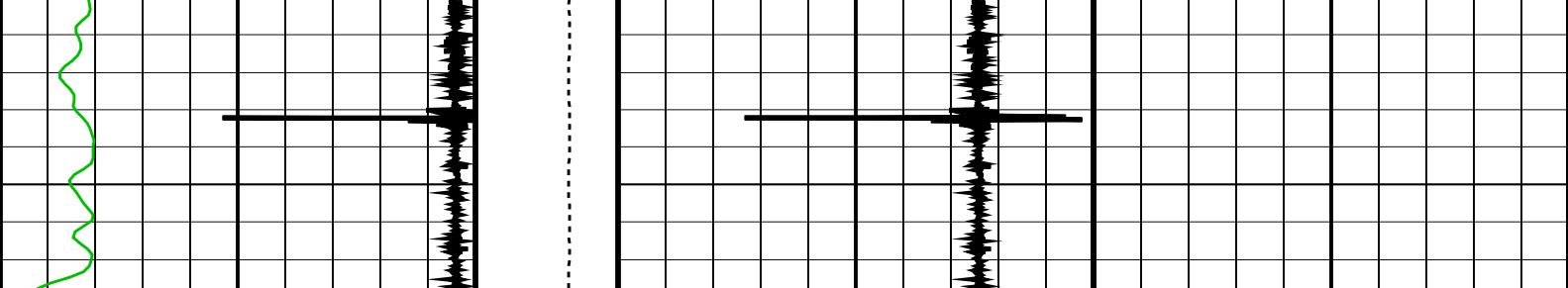
PTC-2789-NUCL

PIP SUMMARY

☒ Time Mark Every 60 S







Gamma Ray (GR) (GAPI)		Tension (TENS) (LBF)		Shifted Casing Collar Locator (SCCL)	
0	200	0	3000	-10	10
Casing Collar Locator (CCL)					
-19	1				

PIP SUMMARY

Time Mark Every 60 S

Format: PERFO_1 Vertical Scale: 1:200

Graphics File Created: 21-Oct-2005 02:50

OP System Version: 13C0-300
MCM

SHM_GUN	PTC-2789-NUCL	SAFE	PTC-2789-NUCL
PGGT-C	PTC-2789-NUCL		

Output DLIS Files

DEFAULT	PERFO_013LUP	FN:12	PRODUCER	21-Oct-2005 02:50
---------	--------------	-------	----------	-------------------

Schlumberger

Correlation Pass
Scale 1:200

MAXIS Field Log

Company: Esso Australia Ltd.

Well: WKF W-15

Output DLIS Files

DEFAULT	PERFO_012LUP	FN:11	PRODUCER	21-Oct-2005 02:43	3243.4 M	3194.6 M
---------	--------------	-------	----------	-------------------	----------	----------

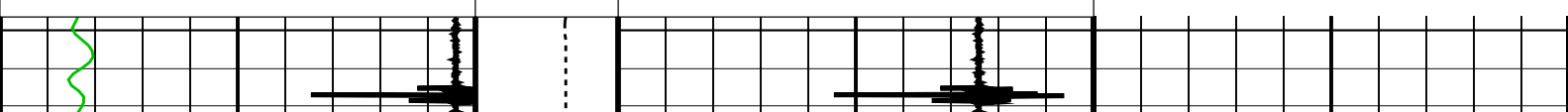
OP System Version: 13C0-300
MCM

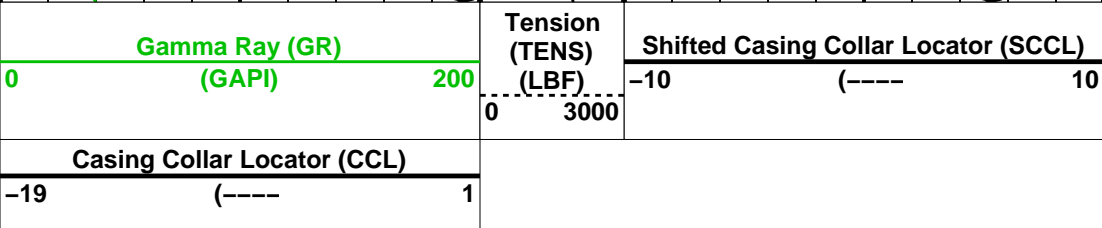
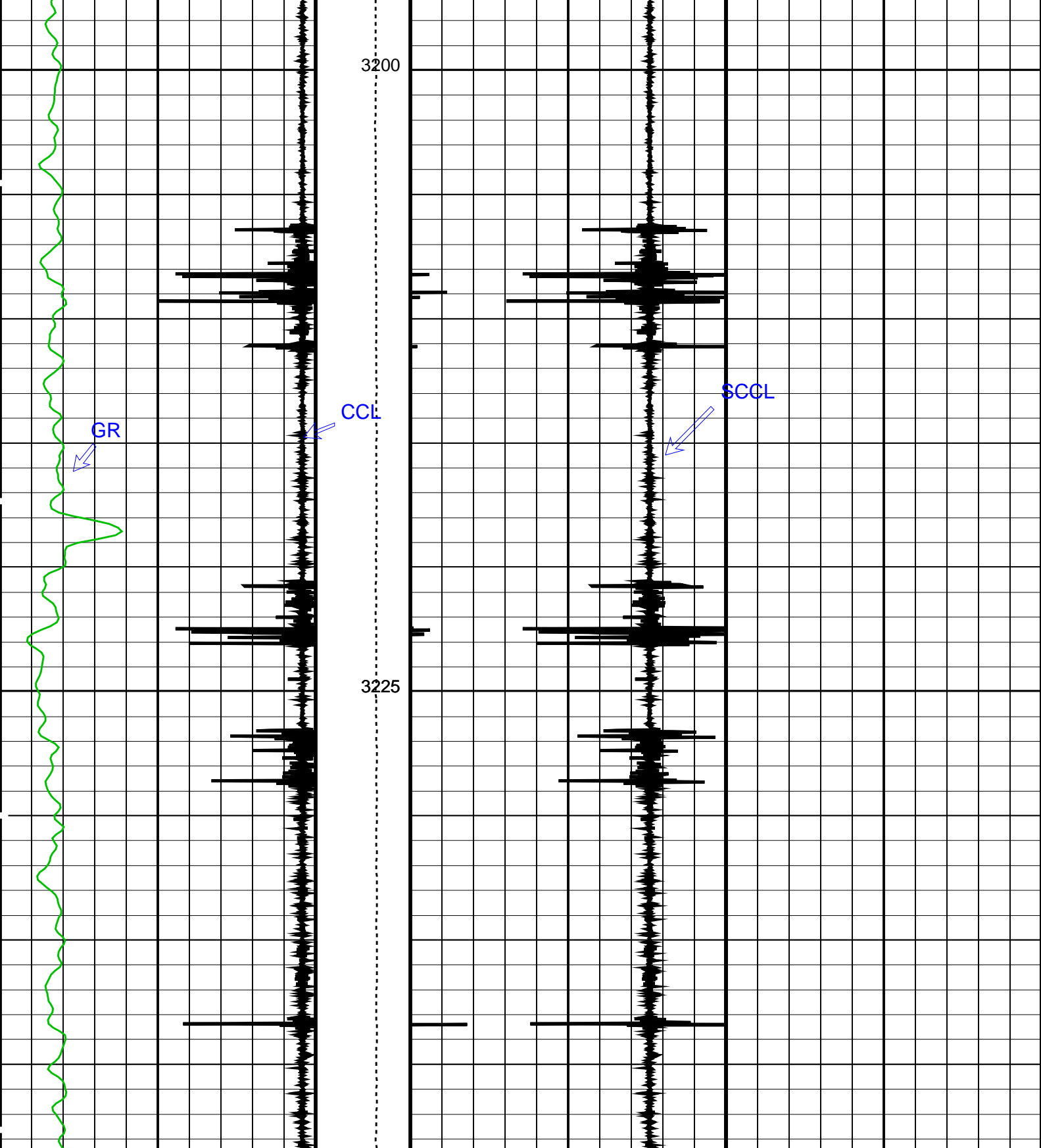
SHM_GUN	PTC-2789-NUCL	SAFE	PTC-2789-NUCL
PGGT-C	PTC-2789-NUCL		

PIP SUMMARY

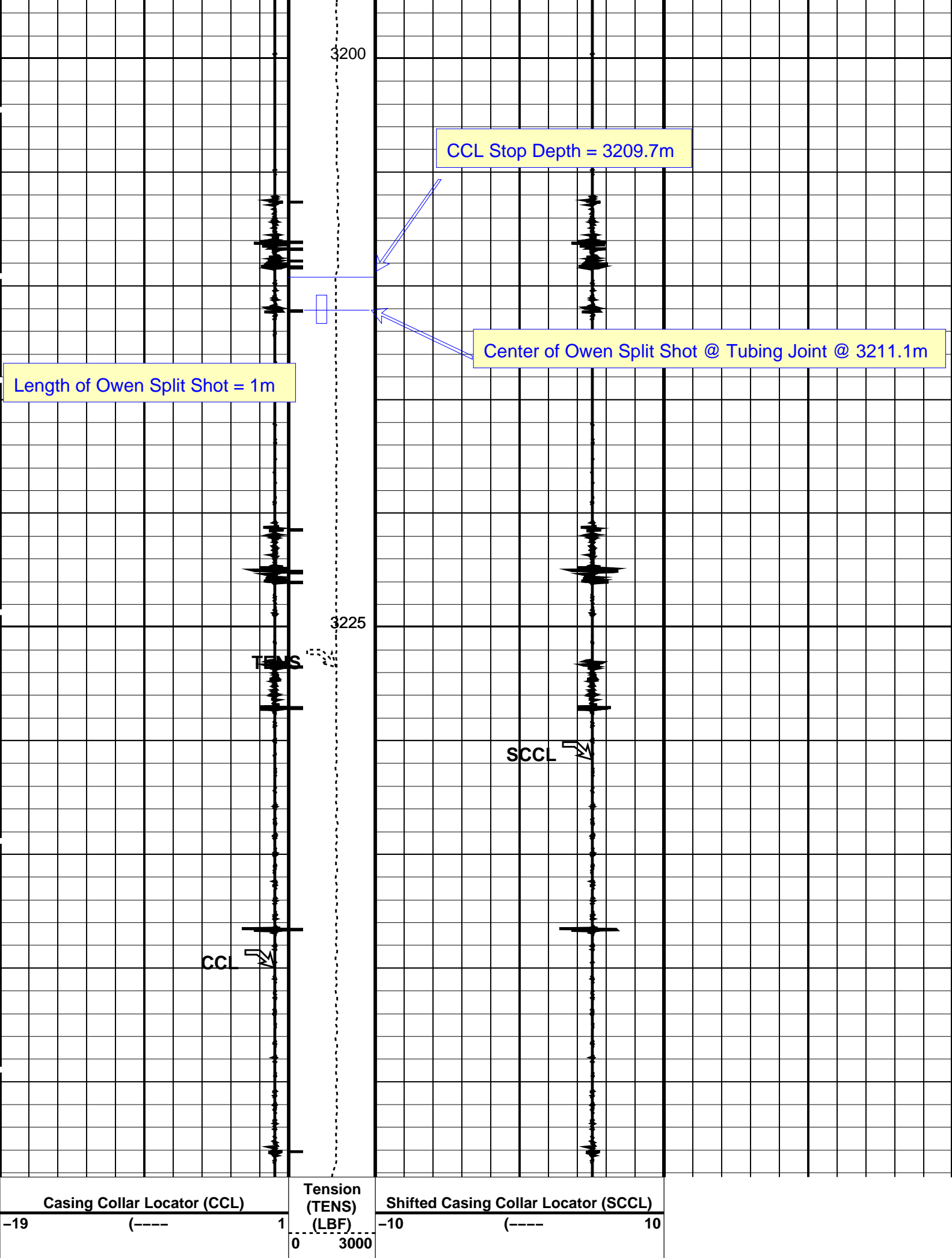
Time Mark Every 60 S

Casing Collar Locator (CCL)		Tension (TENS) (LBF)		Shifted Casing Collar Locator (SCCL)	
-19	1	0	3000	-10	10
Gamma Ray (GR) (GAPI)					
0	200				





PIP SUMMARY



Parameters

DLIS Name	Description	Value
	CCL-N: Casing Collar Locator	
CCLD	CCL reset delay	12 IN
CCLT	CCL Detection Level	0.3 V

Format: PERFO_1 Vertical Scale: 1:200 Graphics File Created: 21-Oct-2005 08:05

OP System Version: 13C0-300
MCM

SHM_GUN	PTC-2789-NUCL	CCL-N	13C0-300
---------	---------------	-------	----------

Output DLIS Files

DEFAULT	PERFO_021LUP	FN:20	PRODUCER	21-Oct-2005 08:05
---------	--------------	-------	----------	-------------------



Correlation Pass

Scale 1:200

MAXIS Field Log

Company: Esso Australia Ltd.

Well: WKF W-15

Output DLIS Files

DEFAULT	PERFO 020LUP	FN:19	PRODUCER	21-Oct-2005 07:57	3249.5 M	3197.4 M
---------	--------------	-------	----------	-------------------	----------	----------

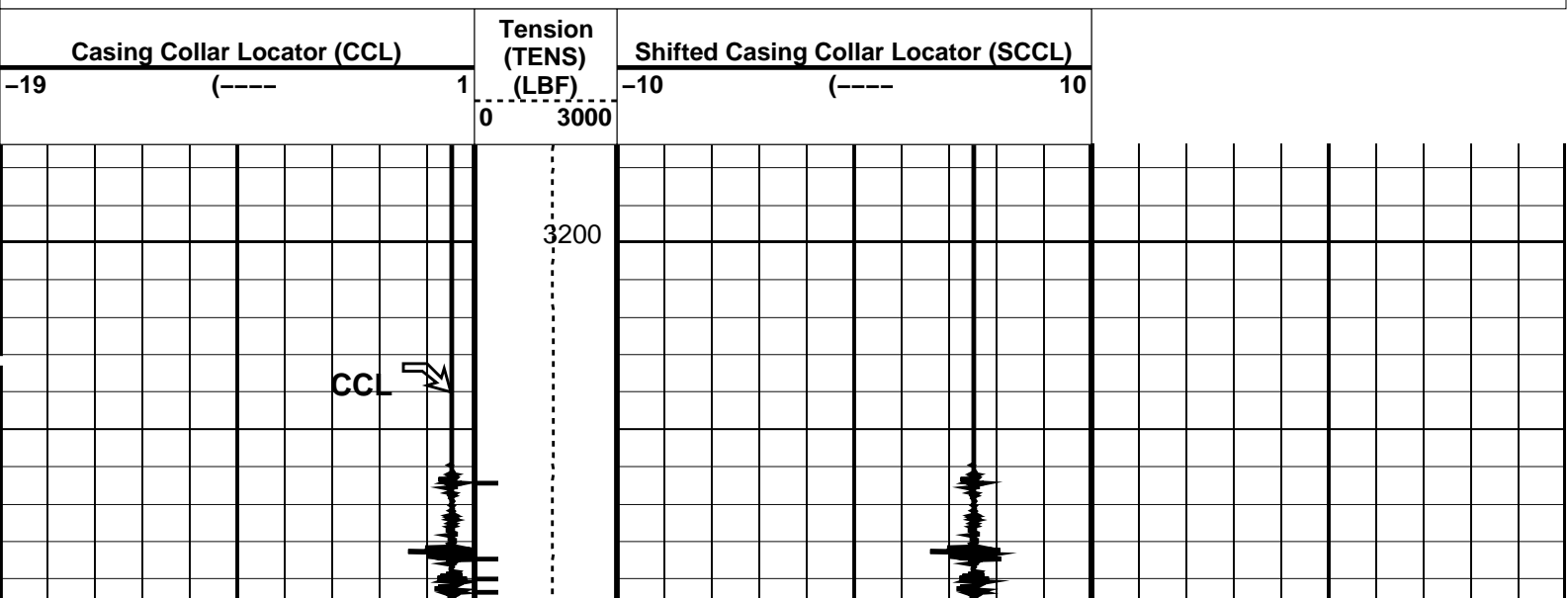
OP System Version: 13C0-300
MCM

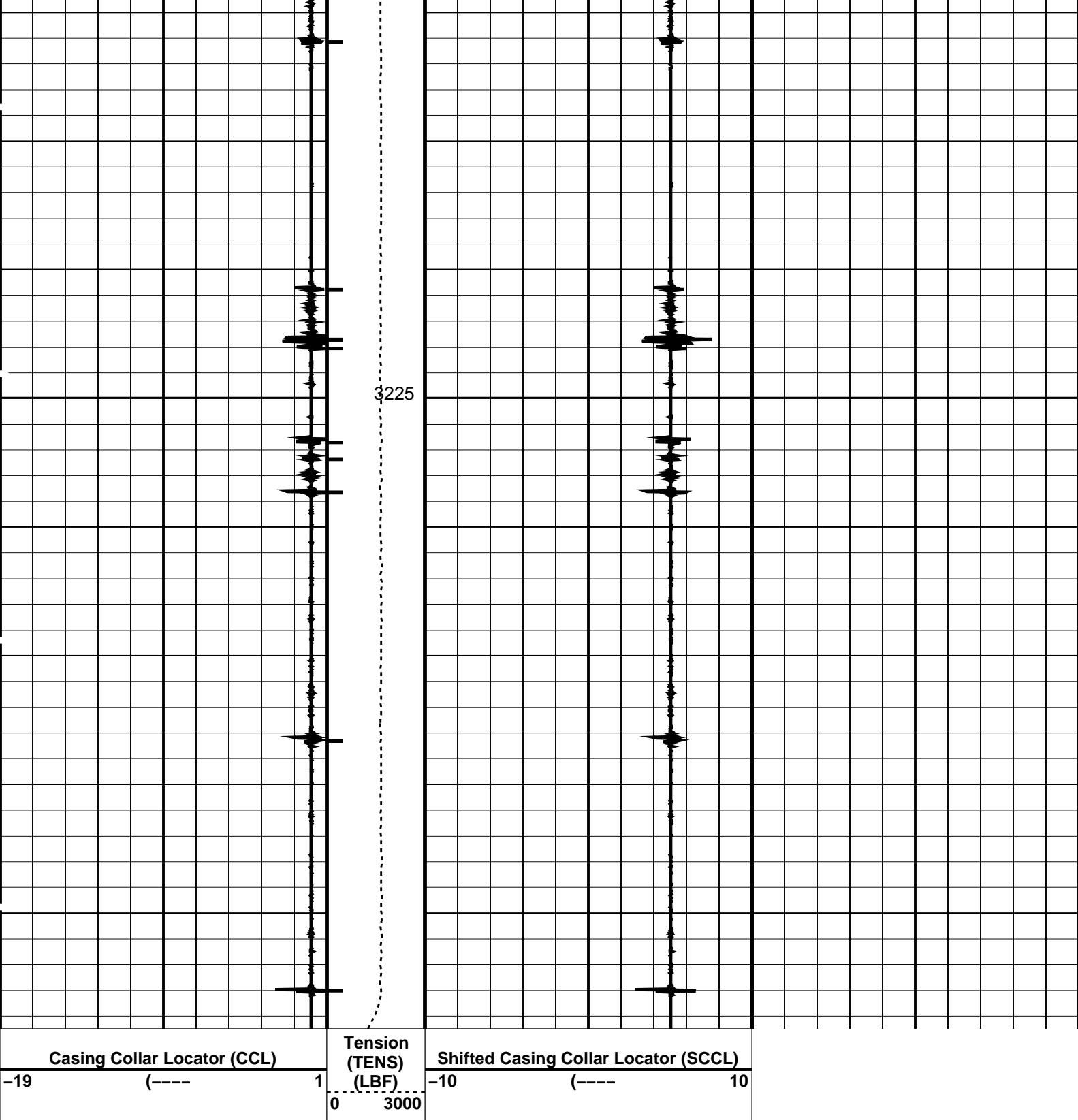
SHM_GUN	PTC-2789-NUCL	CCL-N	13C0-300
---------	---------------	-------	----------

PIP SUMMARY

└─ Casing Collars

Time Mark Every 60 S





PIP SUMMARY

← Casing Collars

Time Mark Every 60 S

Parameters

DLIS Name	Description	Value
CCLD	CCL-N: Casing Collar Locator	12 IN
CCLT	CCL reset delay	0.3 V
	CCL Detection Level	

Format: PERFO_1 Vertical Scale: 1:200

Graphics File Created: 21-Oct-2005 07:57

OP System Version: 13C0-300
MCM

SHM_GUN	PTC-2789-NUCL	CCL-N	13C0-300
Output DLIS Files			
DEFAULT	PERFO_020LUP	FN:19	PRODUCER 21-Oct-2005 07:57
<div>Company: Esso Australia Ltd.<div>Schlumberger</div></div> <div>Well: WKF W-4 Field: West Kingfish Rig: ISS Rig 22 / Prod 2 Country: Australia</div> <div>1 11/16" String shot 1 3/8" Owen Split Shot Scale 1:200</div>			