





Company: Esso Australia Ltd.

Well: BMA A-2a

Field: Bream

Unit: Prod 4 Crane

Country: Australia

Prod 4 Crane  
Unit: Bream  
Location: Bass Strait  
Well: BMA A-2a  
Company: Esso Australia Ltd.

7" MPBT PLUG  
CASING COLLAR LOG  
PLUG SETTING RECORD

Bass Strait	Elev.: K.B.
X=567,200ME	G.L. -59.4 m
Y=5,737,840MN	D.F. 33.5 m

Permanent Datum:	MSL	Elev.: 0 m
Log Measured From:	ODF	33.5 m above Perm. Datum
Drilling Measured From:	ODF	

State: Victoria	Max. Well Deviation 49 deg	Longitude 570,100 ME	Latitude 5,736,660 MN
-----------------	----------------------------	----------------------	-----------------------

Logging Date 4-Jun-2003

Run Number 1

Depth Driller 2435 m

Schlumberger Depth 2421 m

Bottom Log Interval 2421 m

Top Log Interval 2350 m

Casing Fluid Type PRODUCED FLUIDS

Salinity

Density

Fluid Level

BIT/CASING/TUBING STRING

Bit Size 8.500 in

From

To

Casing/Tubing Size 7.000 in

Weight 26 lbm/ft

Grade L-80

From 2217 m

To 2431.1 m

Maximum Recorded Temperatures 98 degC

Logger On Bottom 4-Jun-2003 15:00

Unit Number 1 Location Sale VEA

Recorded By Rod Miller & Martin Foss

Witnessed By Mark Wilson & Greg Rimmer

PVT DATA

Oil Density	Run 1	Run 2	Run 3
Water Salinity			
Gas Gravity			
Bo			
Bw			
1/Bg			
Bubble Point Pressure			
Bubble Point Temperature			
Solution GOR			
Maximum Deviation	49 deg		

CEMENTING DATA

Primary/Squeeze	Primary
Casing String No	
Lead Cement Type	
Volume	
Density	
Water Loss	
Additives	
Tail Cement Type	
Volume	
Density	
Water Loss	
Additives	

Expected Cement Top

Logging Date

Run Number

Depth Driller

Schlumberger Depth

Bottom Log Interval

Top Log Interval

Casing Fluid Type

Salinity

Density

Fluid Level

BIT/CASING/TUBING STRING

Bit Size

From

To

Casing/Tubing Size

Weight

Grade

From

To

Maximum Recorded Temperatures

Logger On Bottom 15:00

Unit Number 1 Location

Recorded By

Witnessed By



## DISCLAIMER

THE USE OF AND RELIANCE UPON THIS RECORDED-DATA BY THE HEREIN NAMED COMPANY (AND ANY OF ITS AFFILIATES, PARTNERS, REPRESENTATIVES, AGENTS, CONSULTANTS AND EMPLOYEES) IS SUBJECT TO THE TERMS AND CONDITIONS AGREED UPON BETWEEN SCHLUMBERGER AND THE COMPANY, INCLUDING: (a) RESTRICTIONS ON USE OF THE RECORDED-DATA; (b) DISCLAIMERS AND WAIVERS OF WARRANTIES AND REPRESENTATIONS REGARDING COMPANY'S USE OF AND RELIANCE UPON THE RECORDED-DATA; AND (c) CUSTOMER'S FULL AND SOLE RESPONSIBILITY FOR ANY INFERENCE DRAWN OR DECISION MADE IN CONNECTION WITH THE USE OF THIS RECORDED-DATA.

## OTHER SERVICES1

OS1: DD  
OS2: MPBT  
OS3: DB  
OS4:  
OS5:

## OTHER SERVICES2

OS1:  
OS2:  
OS3:  
OS4:  
OS5:

## REMARKS: RUN NUMBER 1

Correlated to ESSO Solar Log  
Max deviation = 49deg @ 1270m MDRT  
SBHT = 208degF  
SBHP = 2687psia, data obtained with PSP tool on dummy run.  
Dummy run w/ 2-1/8" dummy plug of same size as Posiset to set depth.  
Set 7" 26# Posiset Plug w/ top-of-rubbers @2401  
Ran one run of 40ft, 2-1/8" bailer, filled with water to top of plug  
Ran one run of 40ft, 2-1/8" bailer, filled with cement (5.7gal) 1m of casing

## REMARKS: RUN NUMBER 2

Performed by Schlumberger

## RUN 1

SERVICE ORDER #:  
PROGRAM VERSION: 10C0-306  
FLUID LEVEL:

LOGGED INTERVAL	START	STOP

## RUN 2

SERVICE ORDER #:  
PROGRAM VERSION:  
FLUID LEVEL:

LOGGED INTERVAL	START	STOP

## EQUIPMENT DESCRIPTION

## RUN 1

## SURFACE EQUIPMENT

WITM-A

## RUN 2

## SURFACE EQUIPMENT

MPBM

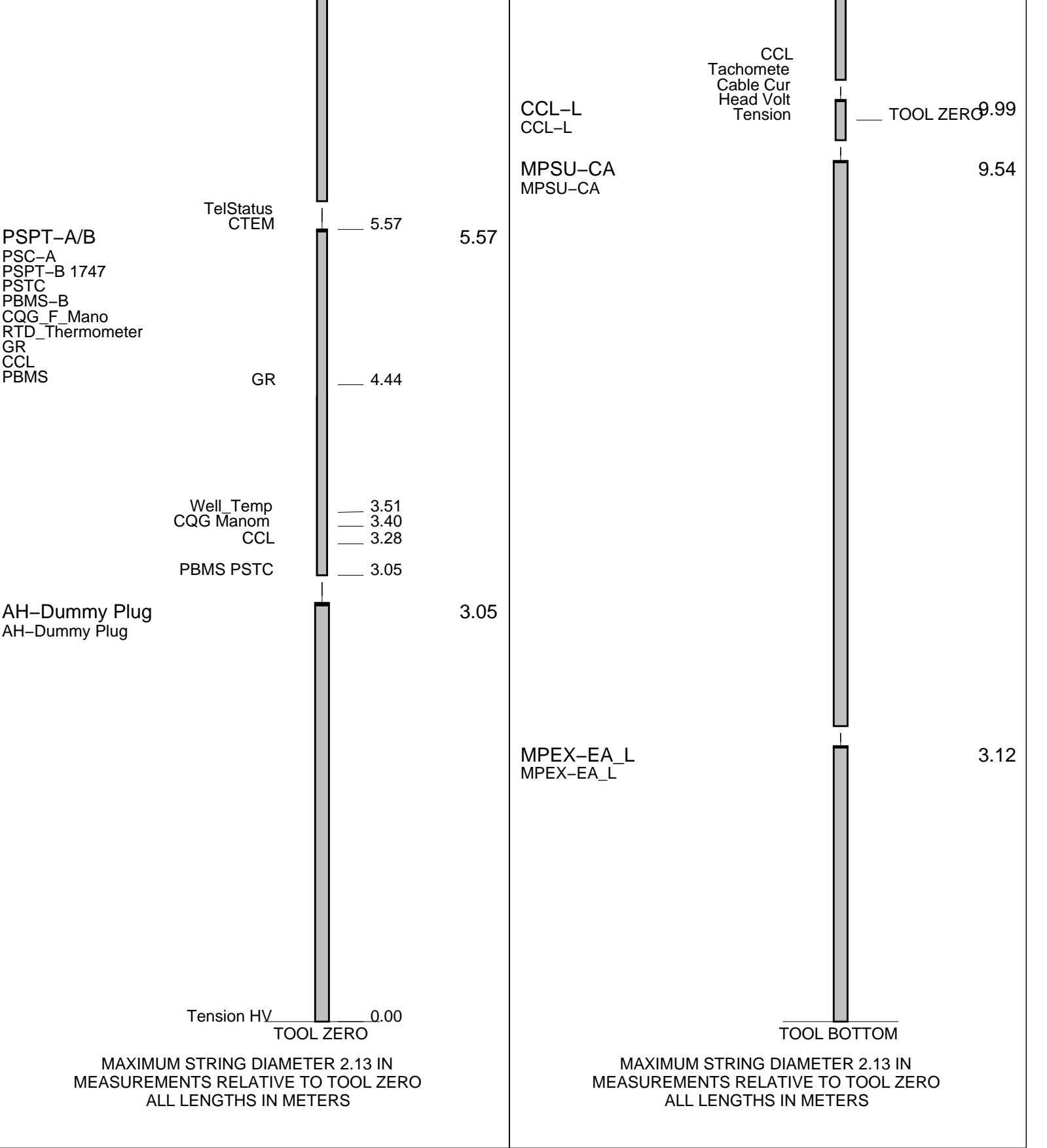
## DOWNHOLE EQUIPMENT

## DOWNHOLE EQUIPMENT

MH-22		7.88
MH-22		
EQF-43		7.40
EQF-43		

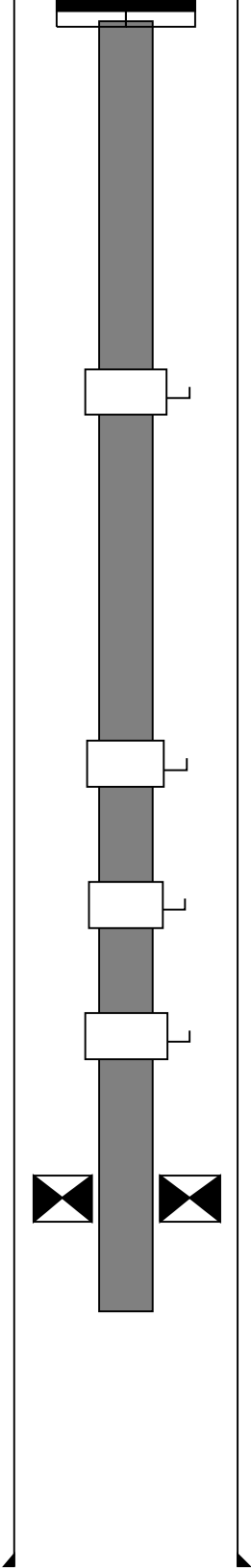
MH-22		12.30
MH-22		
EQF-43		11.82
EQF-43		





Production String	(in)		(m)	Well Schematic	(m)			(in)		Casing String
	OD	ID	MD		MD	OD	ID			
Tubing Hanger		3.500	0.0		12.0	9.625				Casing String



Tubing	3.500	2.990	12.0						
Gas Lift Mandrel	3.500		725.0						
Gas Lift Mandrel	3.500		1500.0						
Gas Lift Mandrel	3.500		1583.0						
Gas Lift Mandrel	3.500		1997.0						
Packer	9.625	3.500	2051.0						
						2213.0	9.625	Casing Shoe	





Posi-Set Setting Record

MAXIS Field Log

Output DLIS Files

DEFAULT CCL\_015LUP FN:14 PRODUCER 04-Jun-2003 17:27

OP System Version: 10C0-306  
MCM

MPEX-DA 10C0-306 MPSU-CA 10C0-306  
CCL-L 10C0-306

PIP SUMMARY

- MPSU Run Time Every 1 MN
- MPSU Run Time Every 10 MN

Time Mark Every 60 S

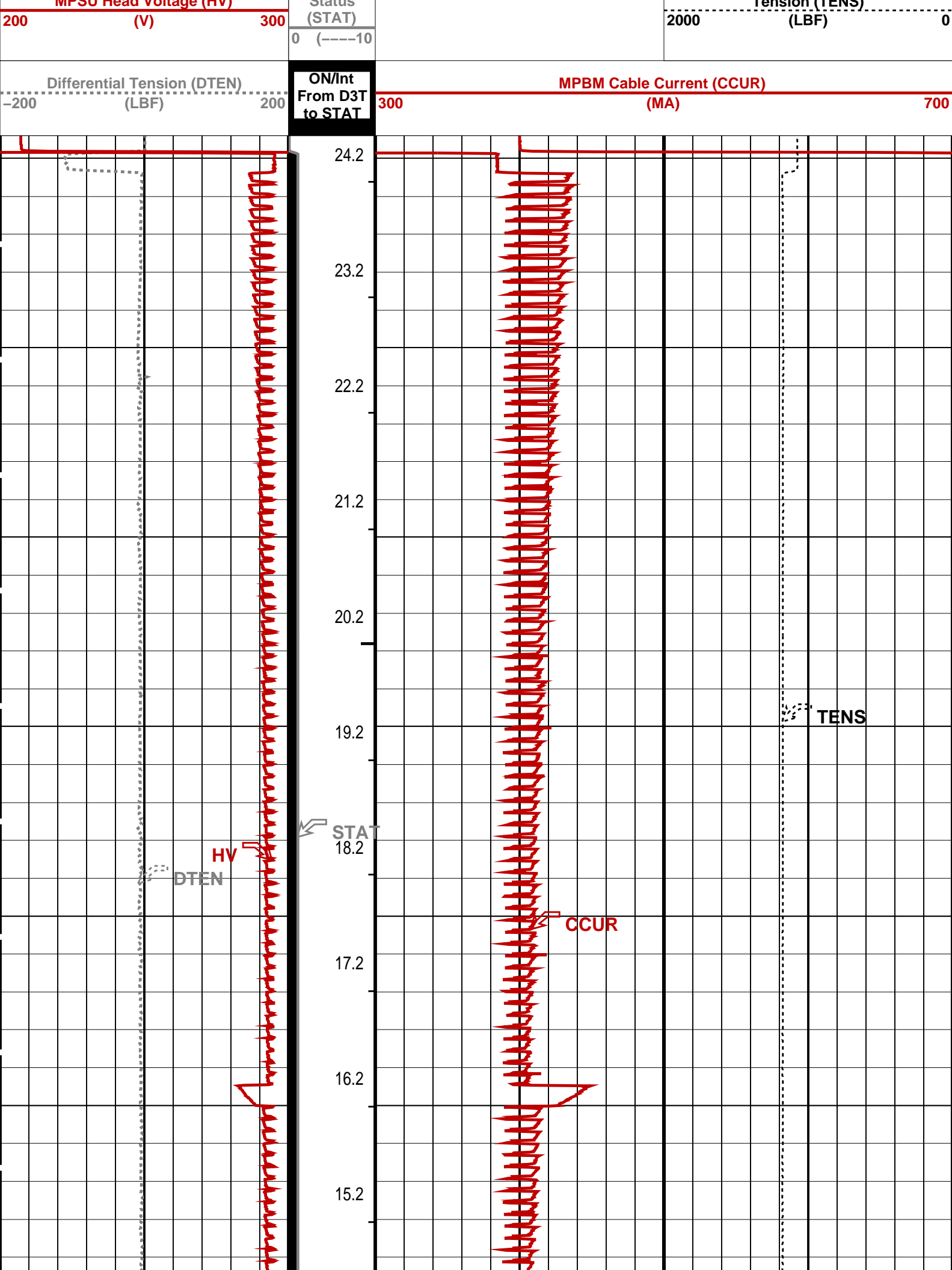
RUN Time  
(RTIM)  
(MN)

MPSU Head Voltage (HV)

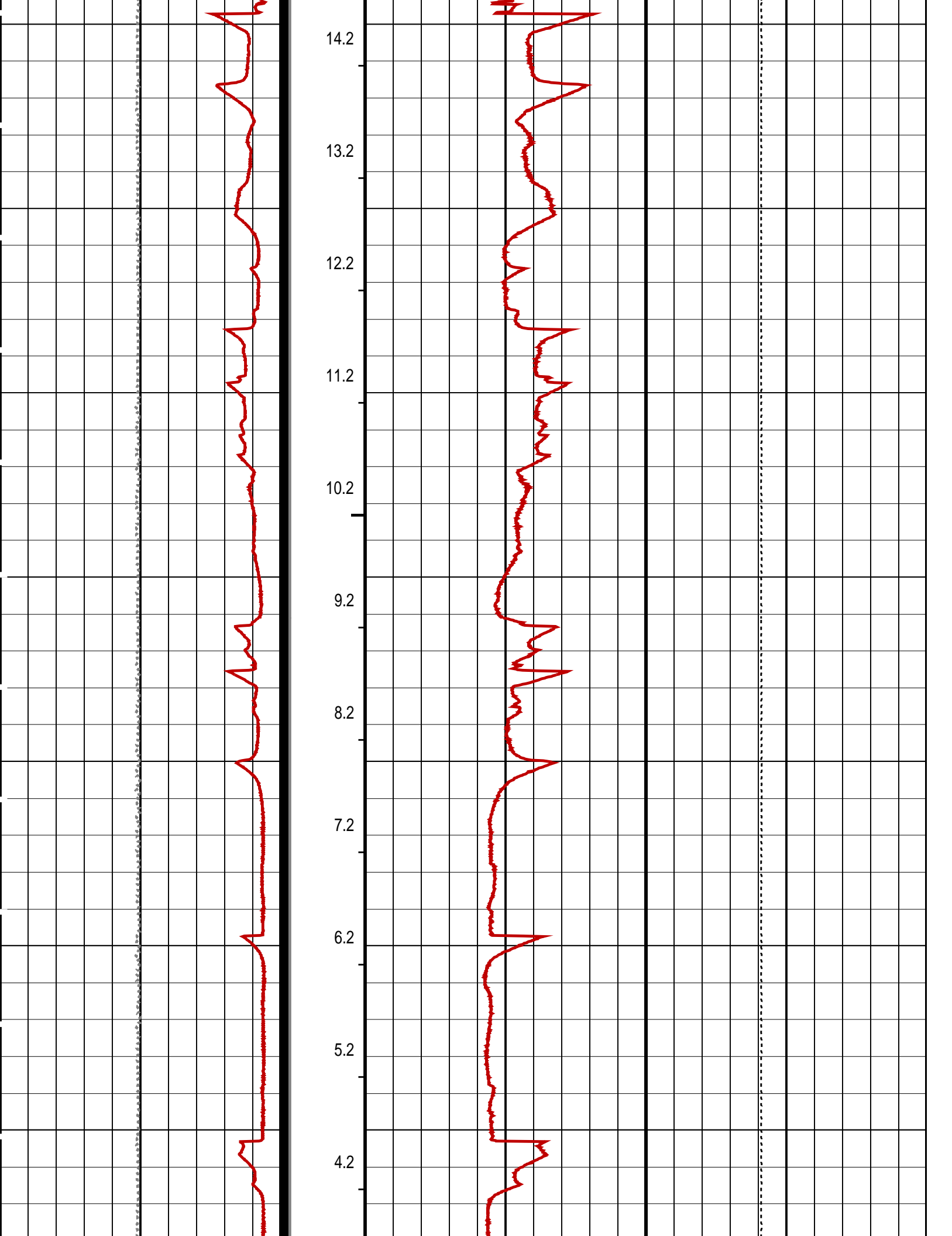
MPSU Run  
Status

Tension (TENS)

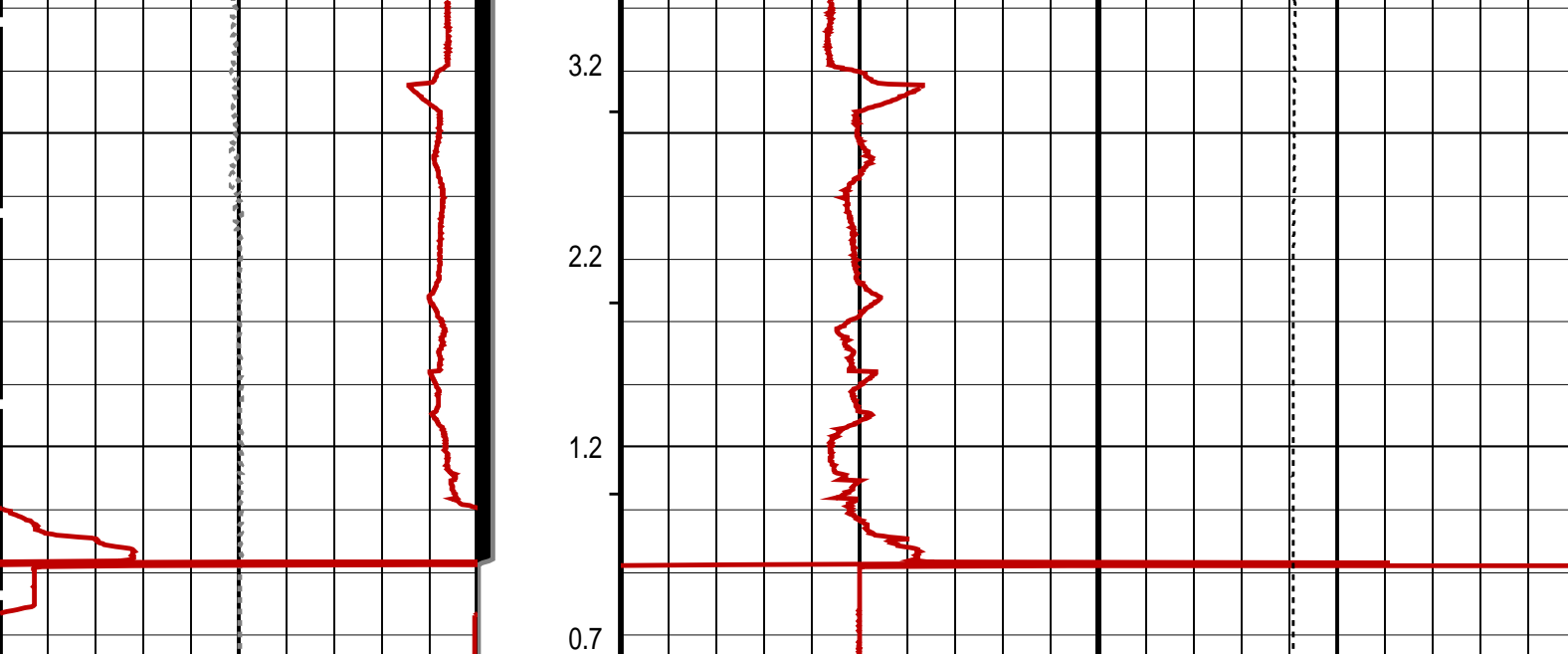












Differential Tension (DTEN) (LBF)	ON/Int From D3T to STAT	MPBM Cable Current (CCUR) (MA)
-200200	300700	
MPSU Head Voltage (HV) (V)	MPSU Run Status (STAT)	Tension (TENS) (LBF)
200300	0 (----10)	20000
	RUN Time (RTIM) (MN)	

#### PIP SUMMARY

- MPSU Run Time Every 1 MN
- MPSU Run Time Every 10 MN

Time Mark Every 60 S

#### Parameters

DLIS Name	Description	Value
MPSU-CA: MECHANICAL PLUGBACK SETTING UNIT IPUMP	Intensifier Pump	TRUE

Format: MPBT Vertical Scale: 1:600 Graphics File Created: 04-Jun-2003 17:27

#### OP System Version: 10C0-306

MCM

MPEX-DA	10C0-306	MPSU-CA	10C0-306
CCL-L	10C0-306		

#### Output DLIS Files

DEFAULT	CCL_015LUP	FN:14	PRODUCER	04-Jun-2003 17:27
---------	------------	-------	----------	-------------------

Schlumberger

Correlation Log



Output DLIS Files

DEFAULT CCL\_012LUP FN:11 PRODUCER 04-Jun-2003 17:18 2404.9 M 2379.6 M

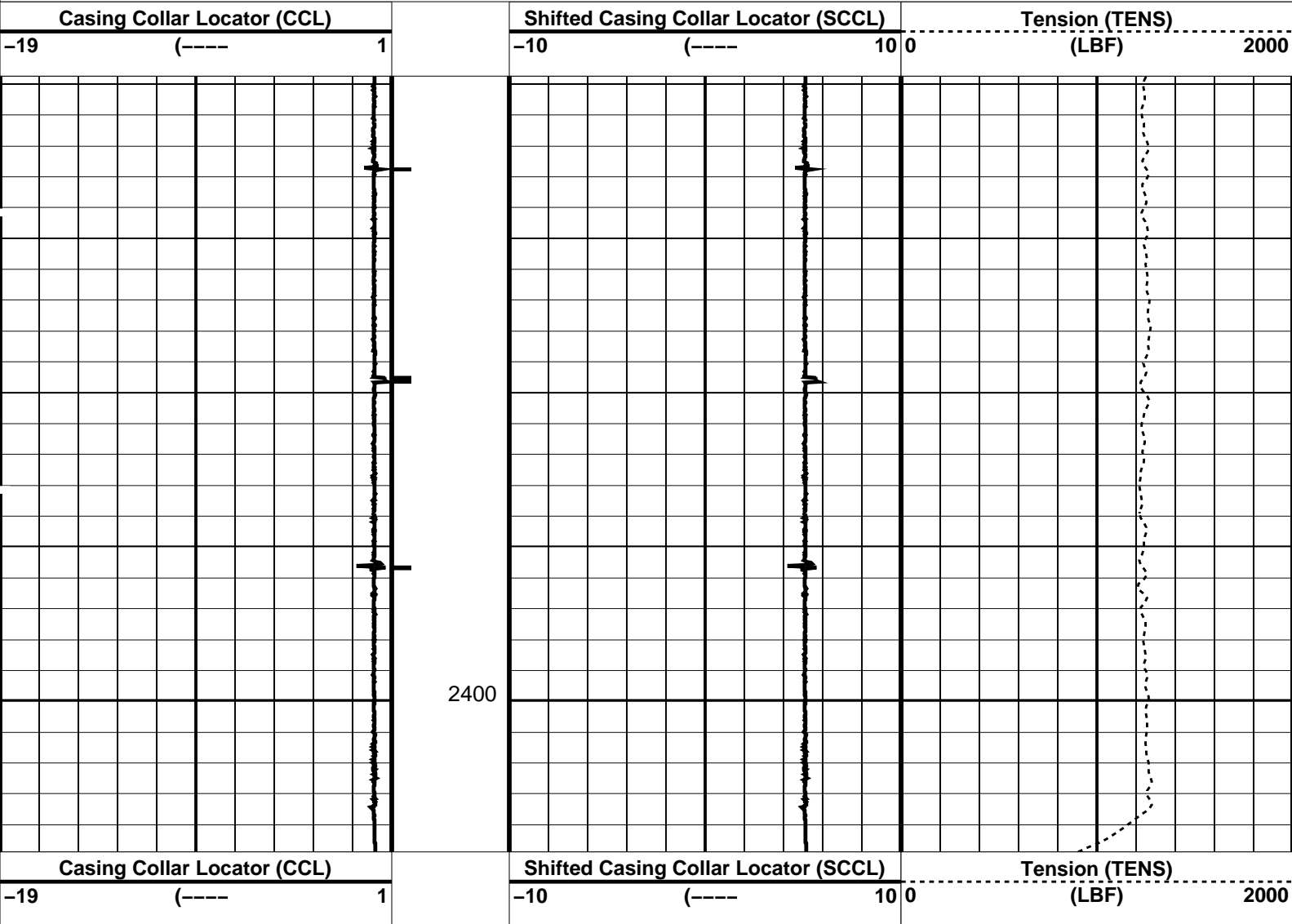
OP System Version: 10C0-306  
MCM

MPEX-DA 10C0-306 MPSU-CA 10C0-306  
CCL-L 10C0-306

PIP SUMMARY

Casing Collars

Time Mark Every 60 S



PIP SUMMARY

Casing Collars

Time Mark Every 60 S

Parameters

DLIS Name	Description	Value
CCLD	CCL-L: Casing Collar Locator	12 IN
CCLT	CCL reset delay	0.3 V
	CCL Detection Level	

Format: PERFO Vertical Scale: 1:200 Graphics File Created: 04-Jun-2003 17:18

OP System Version: 10C0-306  
MCM

MPEX-DA 10C0-306 MPSU-CA 10C0-306  
CCL-L 10C0-306



Output DLIS Files

DEFAULT CCL\_012LUP FN:11 PRODUCER 04-Jun-2003 17:18

Schlumberger

Dummy Run

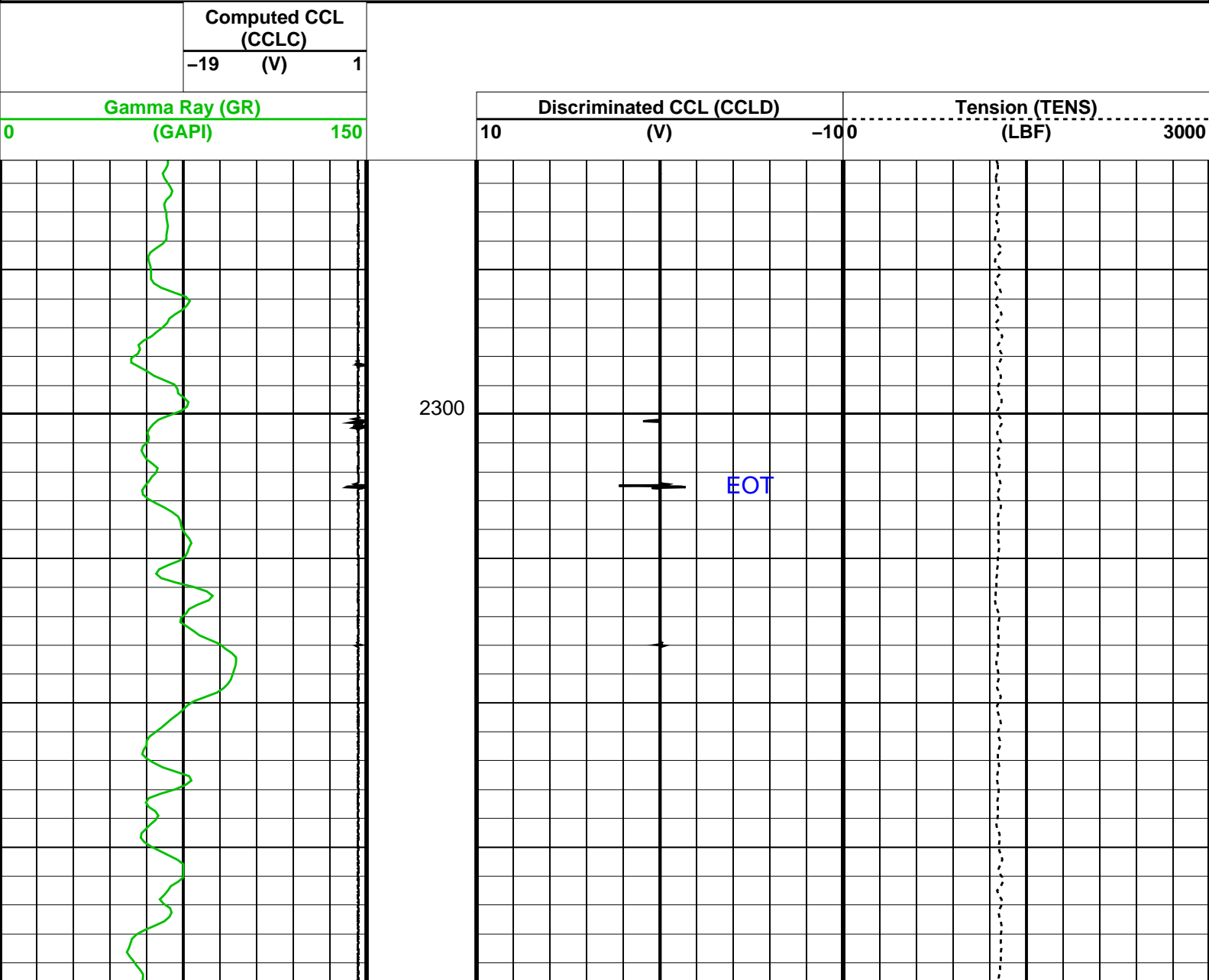
MAXIS Field Log

Output DLIS Files

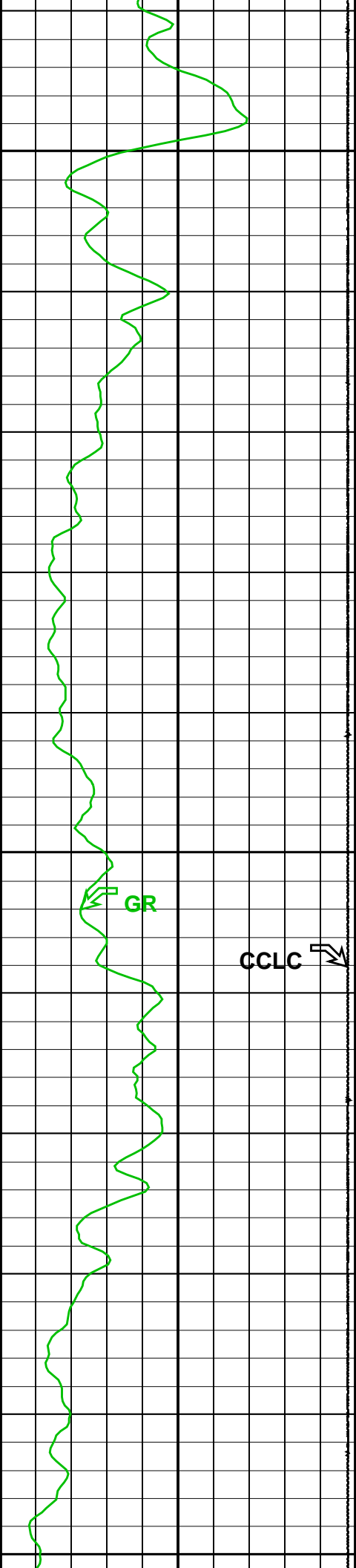
DEFAULT PSP\_006LUP FN:5 PRODUCER 04-Jun-2003 14:45

OP System Version: 10C0-306  
MCM

PSPT-A/B 10C0-306







2325

2350

2375

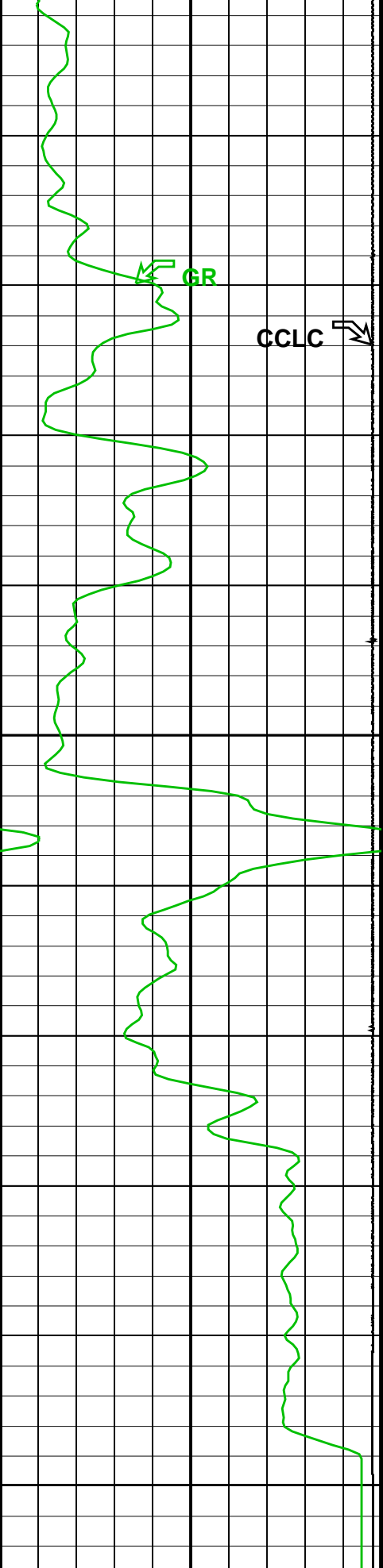
GR

CCLC

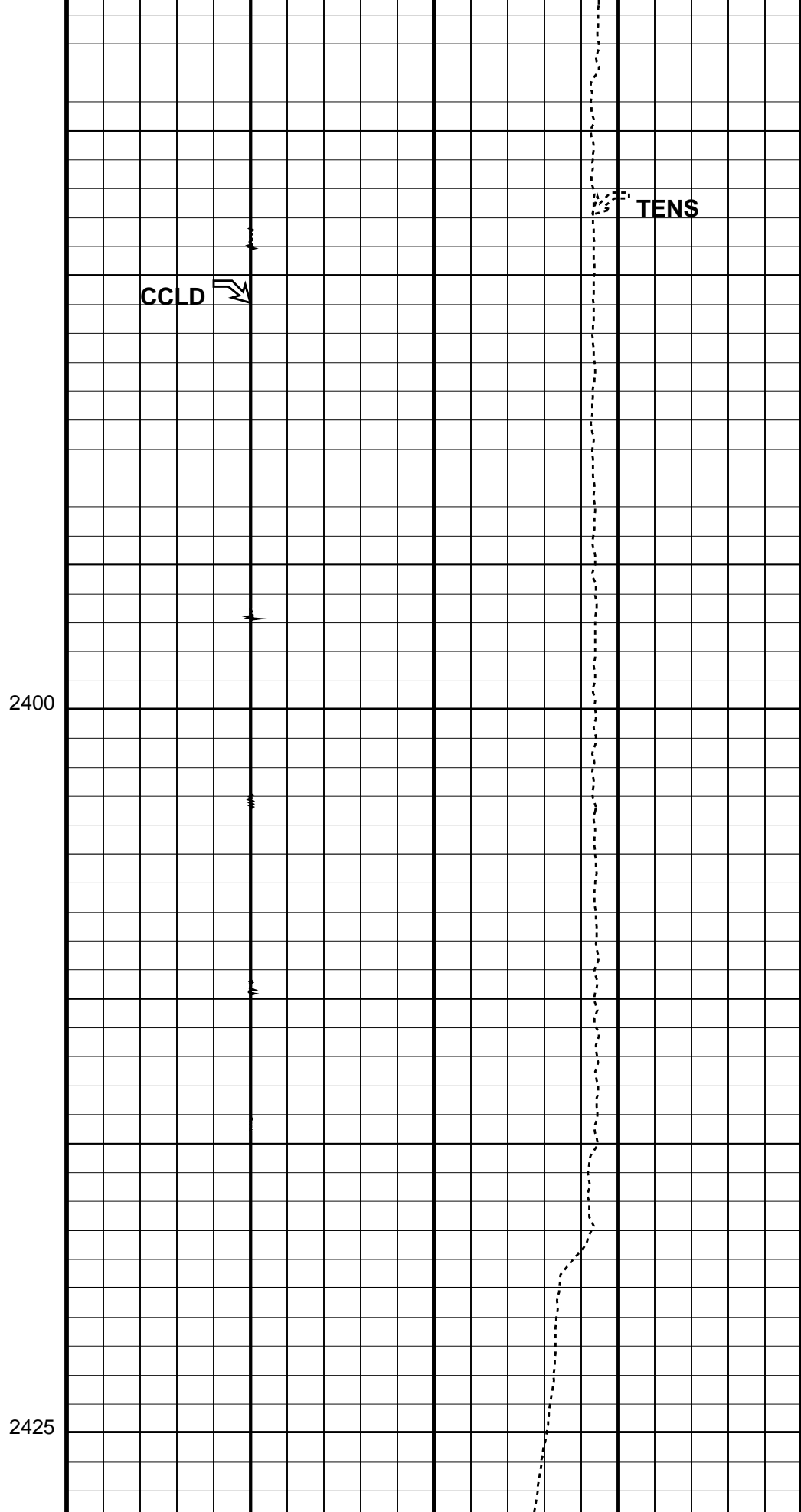
CCLD

TENS





Gamma Ray (GR)  
(GAPI)



Discriminated CCL (CCLD)  
(V)

Tension (TENS)  
(LBF)

Computed CCL  
(CCLC)



	(CCLC)	
-19	(V)	1

OP System Version: 10C0-306

MCM

PSPT-A/B

10C0-306

Output DLIS Files

DEFAULT

PSP\_006LUP

FN:5

PRODUCER

04-Jun-2003 14:45

Output DLIS Files

DEFAULT

PSP\_006LUP

FN:5

PRODUCER

04-Jun-2003 14:45

OP System Version: 10C0-306

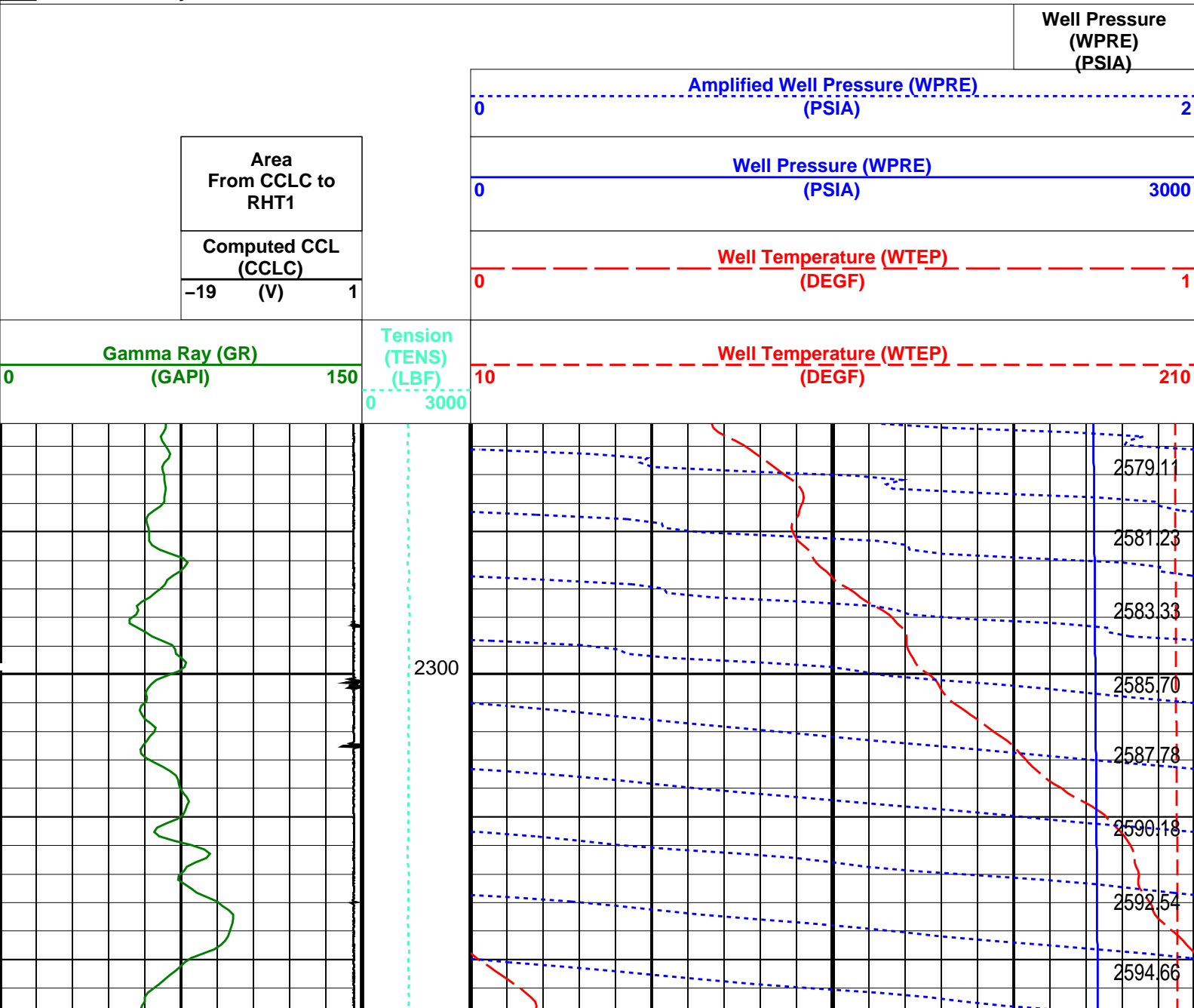
MCM

PSPT-A/B

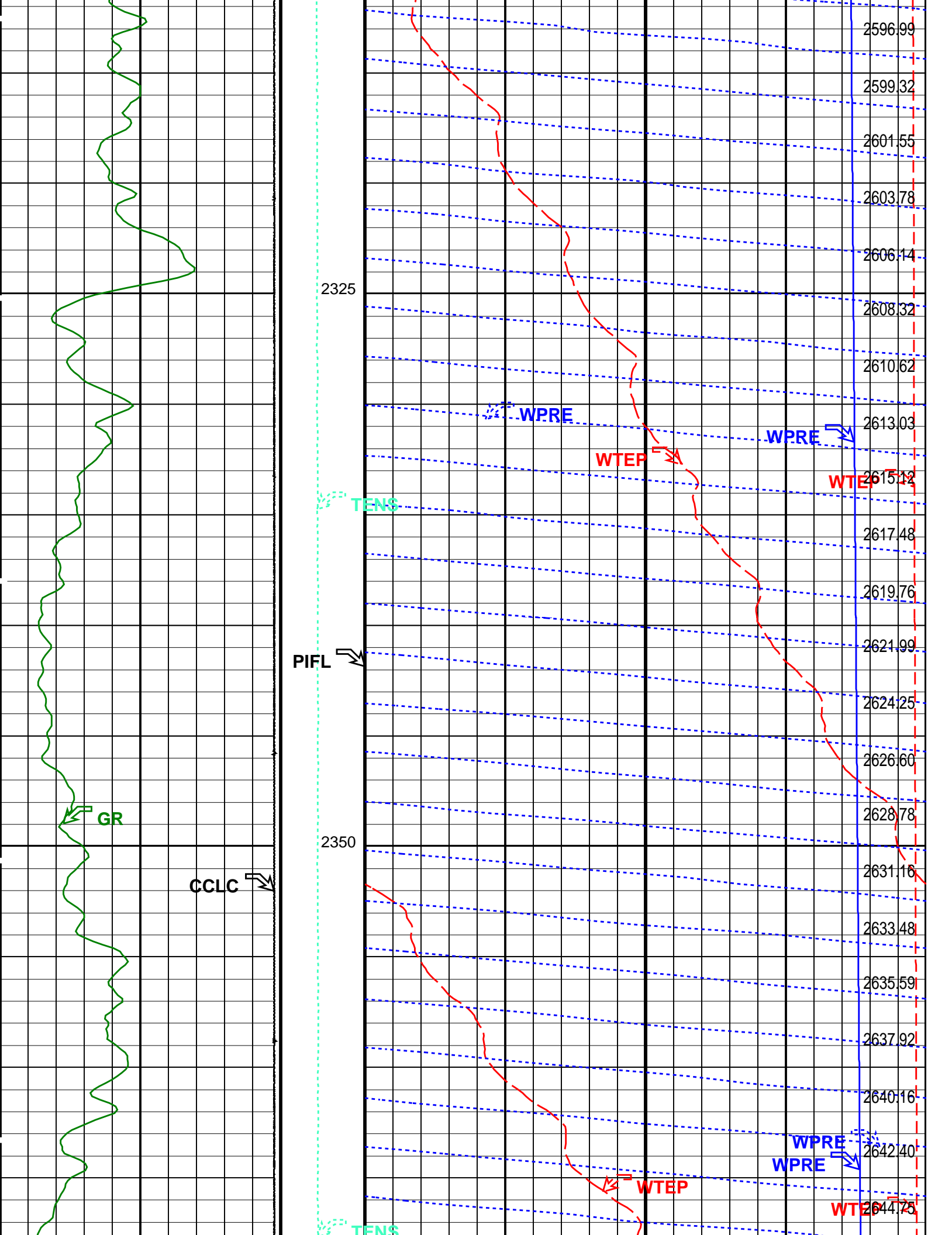
10C0-306

PIP SUMMARY

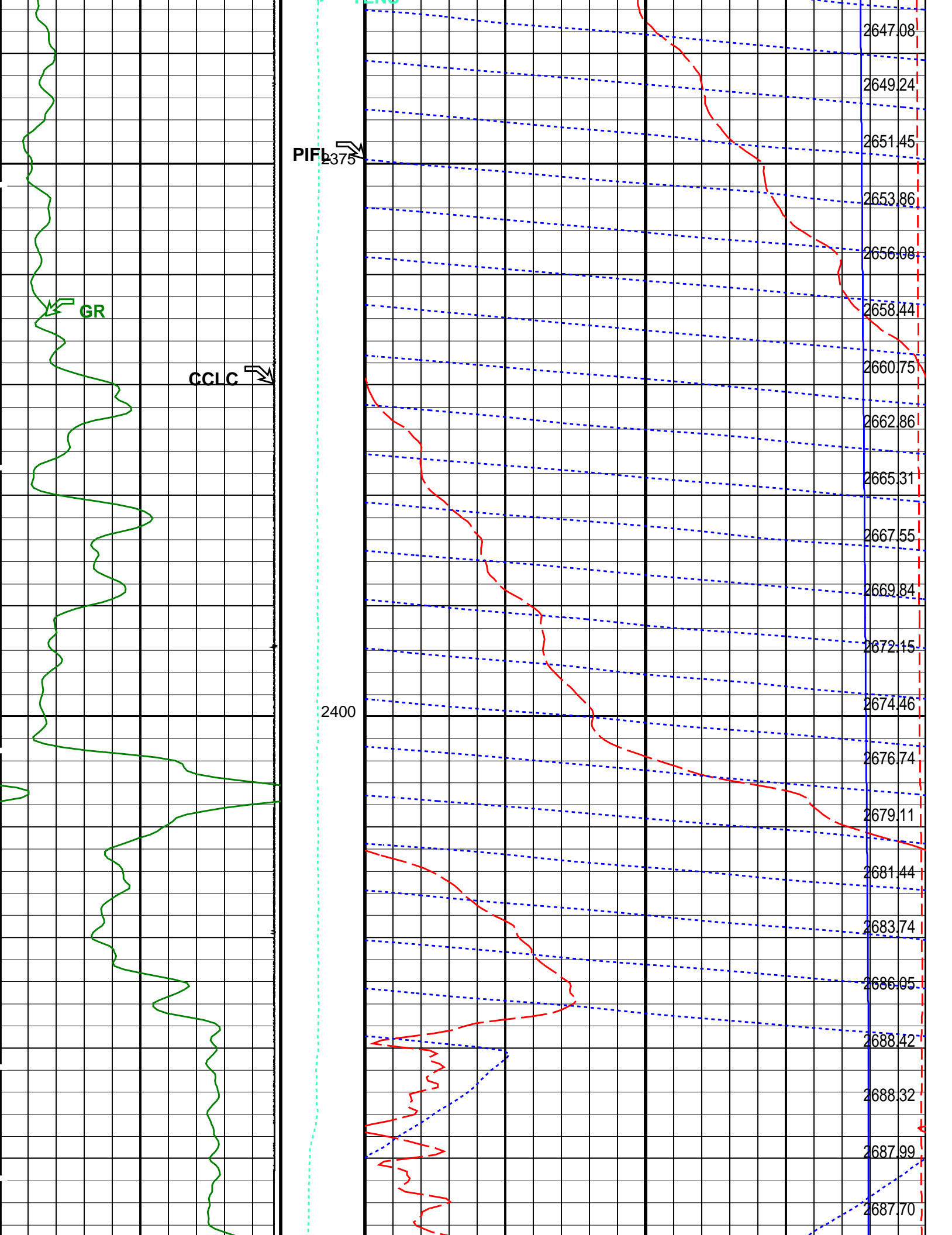
Time Mark Every 60 S



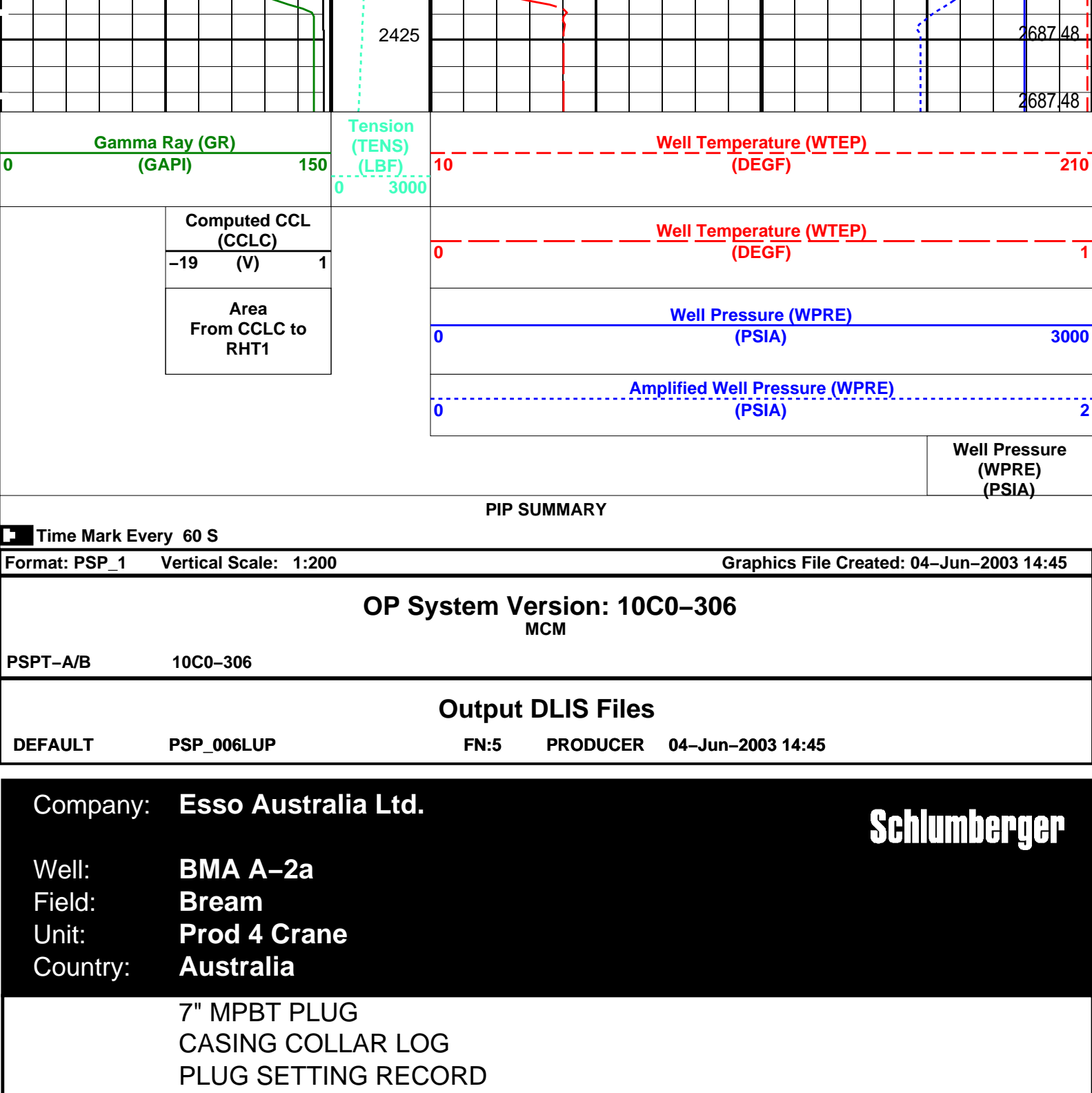












Schlumberger