

Company: Esso Australia Ltd.

Well: BMA A-1a

Field: Bream A

Rig: Rig 453 / Prod 3

Country: Australia

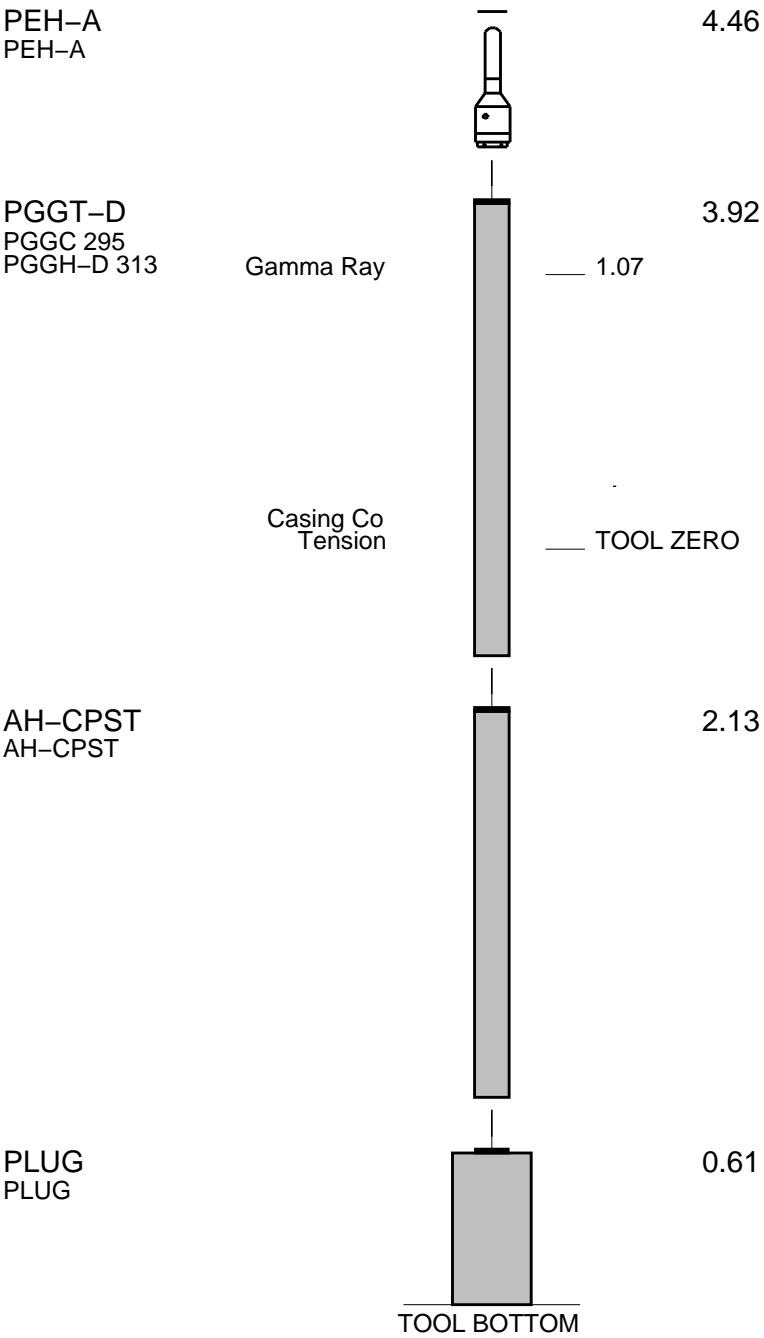
EZSV for 9 5/8" Casing
Scale 1:200

Rig: Rig 453 / Prod 3
Field: Bream A
Location: Gippsland Basin
Well: BMA A-1a
Company: Esso Australia Ltd.

LOCATION			
Gippsland Basin Bass Strait	Permanent Datum:	Elev.: K.B. 33.5 m	
	Log Measured From:	G.L. -59.4 m	
	Drilling Measured From:	D.F. 33.5 m	
State: Victoria	Max. Well Deviation 43 deg	Longitude 147 46' 19.983" E	Latitude 38 29' 58.755" S

Logging Date	30-Oct-2005					
Run Number	1					
Depth Driller	2340 m					
Schlumberger Depth	2340 m					
Bottom Log Interval	1504 m					
Top Log Interval	1504 m					
Casing Fluid Type	Sea Water					
Salinity						
Density	8.55 lbm/gal					
Fluid Level	0 m					
BIT/CASING/TUBING STRING						
Bit Size	10.250 in					
From	0 m					
To	3490 m					
Casing/Tubing Size	9.625 in					
Weight	13 lbm/ft					
Grade	-50000					
From	0 m					
To	3332 m					
Maximum Recorded Temperatures						
Logger On Bottom	Time				10:45	
Unit Number	Location					
Recorded By	K. Aung					
Witnessed By	Tony Bassett					

PVT DATA				Run 1	Run 2	Run 3
Oil Density						
Water Salinity						
Gas Gravity						
Bo						
Bw						
1/Bg						
Bubble Point Pressure						
Bubble Point Temperature						
Solution GOR						
Maximum Deviation	43 deg					
CEMENTING DATA						
Primary/Squeeze	Primary					
Casing String No						
Lead Cement Type						
Volume						
Density						
Water Loss						
Additives						
Expected Cement Top						
Logging Date						
Run Number						
Depth Driller						
Schlumberger Depth						
Bottom Log Interval						
Top Log Interval						
Casing Fluid Type						
Salinity						
Density						
Fluid Level						
BIT/CASING/TUBING STRING						
Bit Size						
From						
To						
Casing/Tubing Size						
Weight						
Grade						
From						
To						
Maximum Recorded Temperatures						
Logger On Bottom	Time					
Unit Number	Location					
Recorded By						
Witnessed By						



MAXIMUM STRING DIAMETER 8.00 IN
MEASUREMENTS RELATIVE TO TOOL ZERO
ALL LENGTHS IN METERS

Client: Esso Australia LTD
Well: BMA A-1a
Field: Bream A
State: Victoria
Country: Australia

Rig Name: R-453
Reference Datum: Mean Sea Level
Elevation:

Drawing Date: 10/31/2005
API #:

Production String	(in)		(m)	Well Schematic	(m)	(in)		Casing String
	OD	ID	MD		MD	OD	ID	

[illegible]

Schlumberger

EZSV Setting in 9 5/8" Casing
Scale 1:200

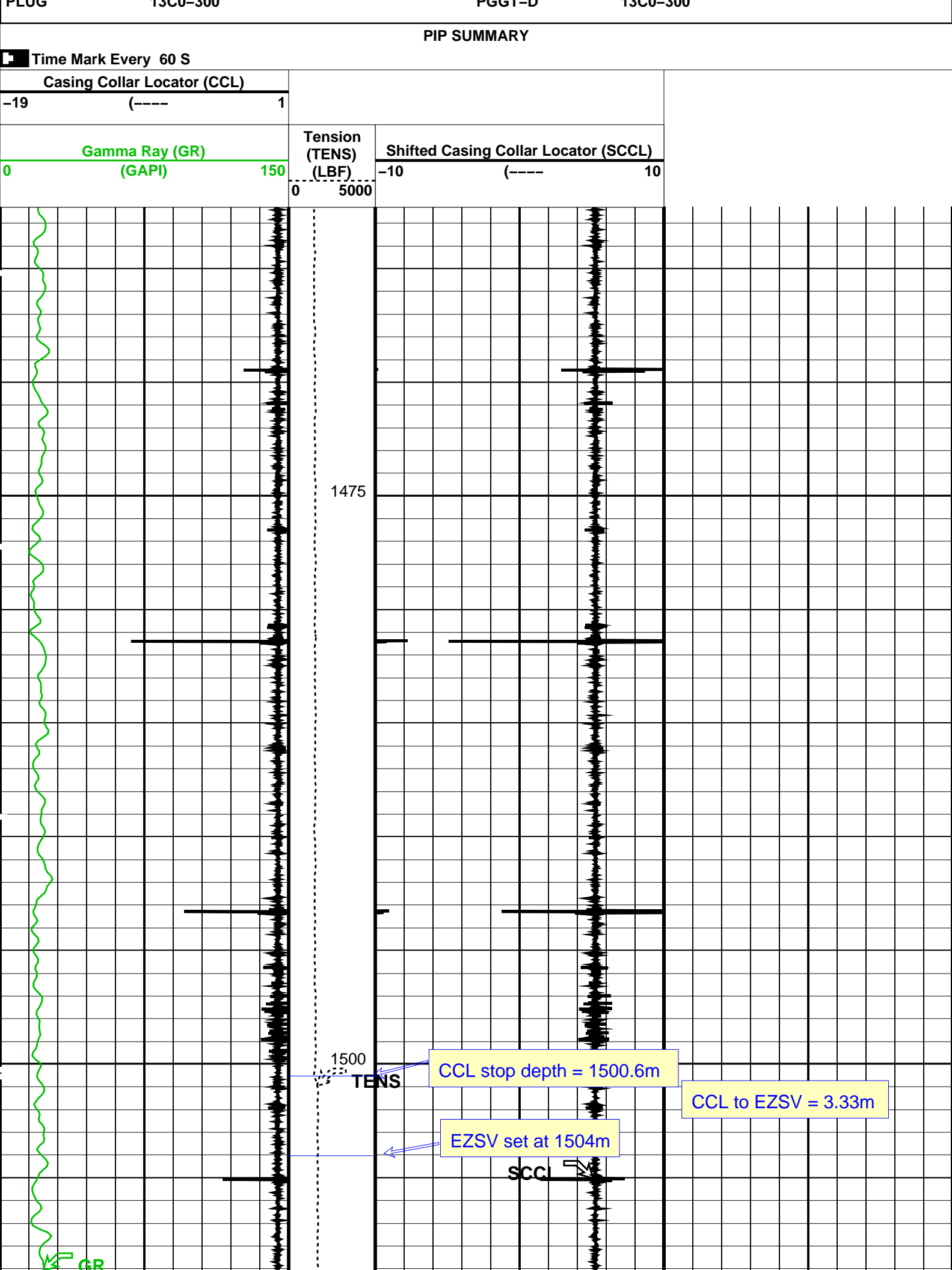
MAXIS Field Log

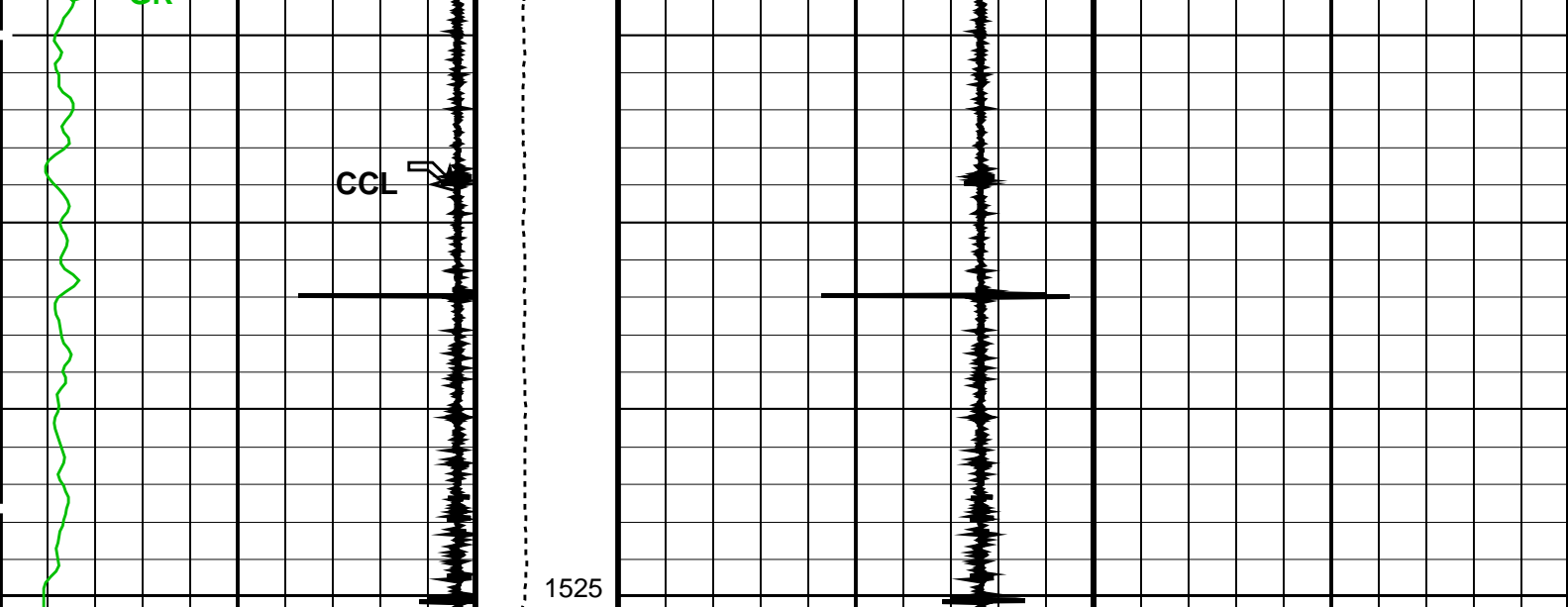
PERFO2 Operational Summary Listing

Device	Status	Req Depth (M)	Obs Depth (M)	Time Used
--------	--------	----------------	----------------	-----------

Company:						Well:
Output DLIS Files						
DEFAULT	PLUG_006LUP	FN:5	PRODUCER	30-Oct-2005 10:48	1525.4 M	1462.3 M

OP System Version: 13C0-300						
MCM						
PLUG	13C0-300	PGCT-D	13C0-300			





Gamma Ray (GR) (GAPI)	0	150
Casing Collar Locator (CCL)	-19	1
Tension (TENS) (LBF)	0	5000
Shifted Casing Collar Locator (SCCL)	-10	10

PIP SUMMARY

Time Mark Every 60 S

Format: PERFO_1 Vertical Scale: 1:200

Graphics File Created: 30-Oct-2005 10:48

OP System Version: 13C0-300

MCM

PLUG 13C0-300 PGGT-D 13C0-300

Output DLIS Files

DEFAULT PLUG_006LUP FN:5 PRODUCER 30-Oct-2005 10:48

Schlumberger

**Correlation Pass
Scale 1:200**

MAXIS Field Log

Company:

Well:

Output DLIS Files

DEFAULT PLUG_005LUP FN:4 PRODUCER 30-Oct-2005 10:38

OP System Version: 13C0-300

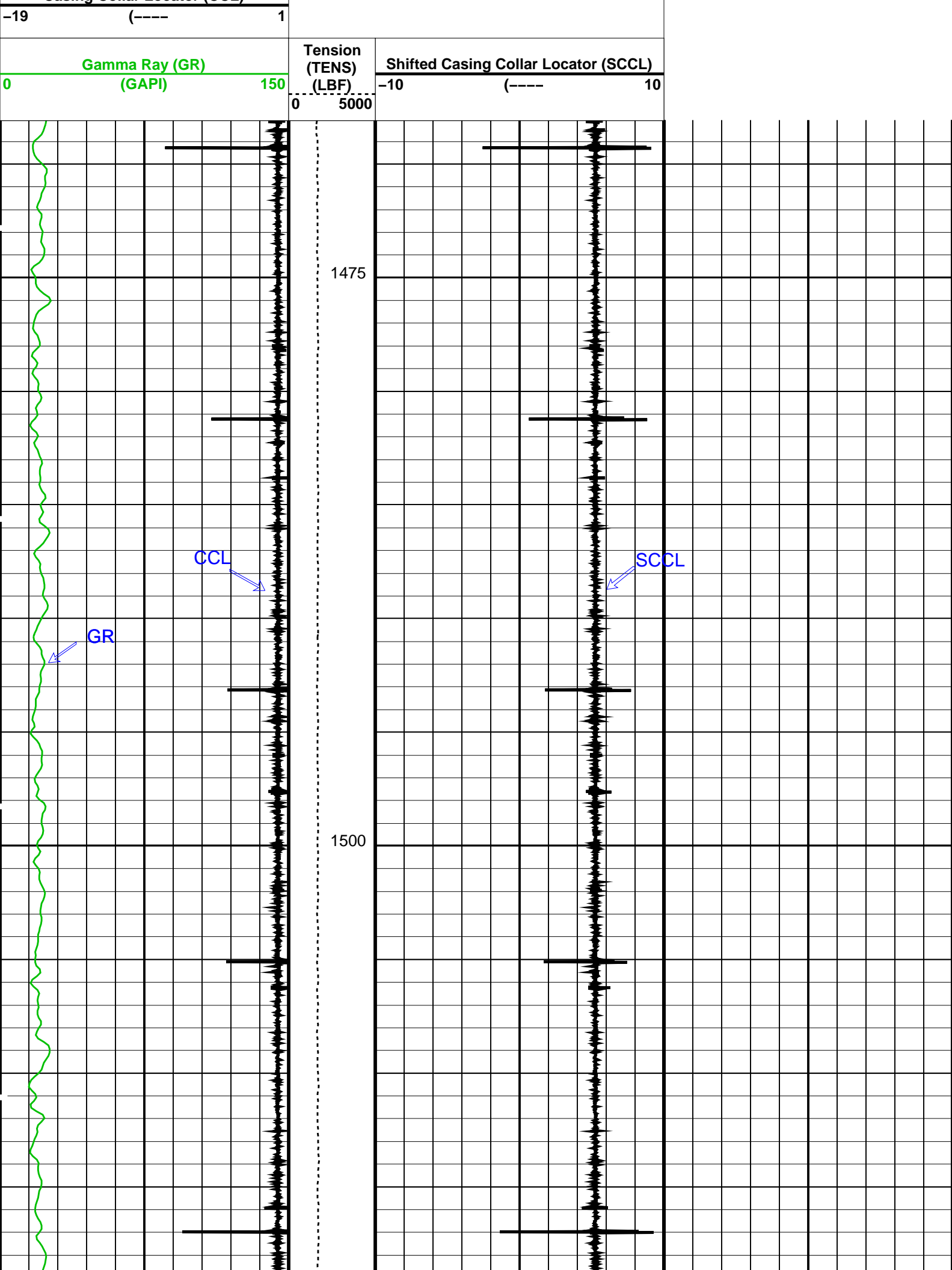
MCM

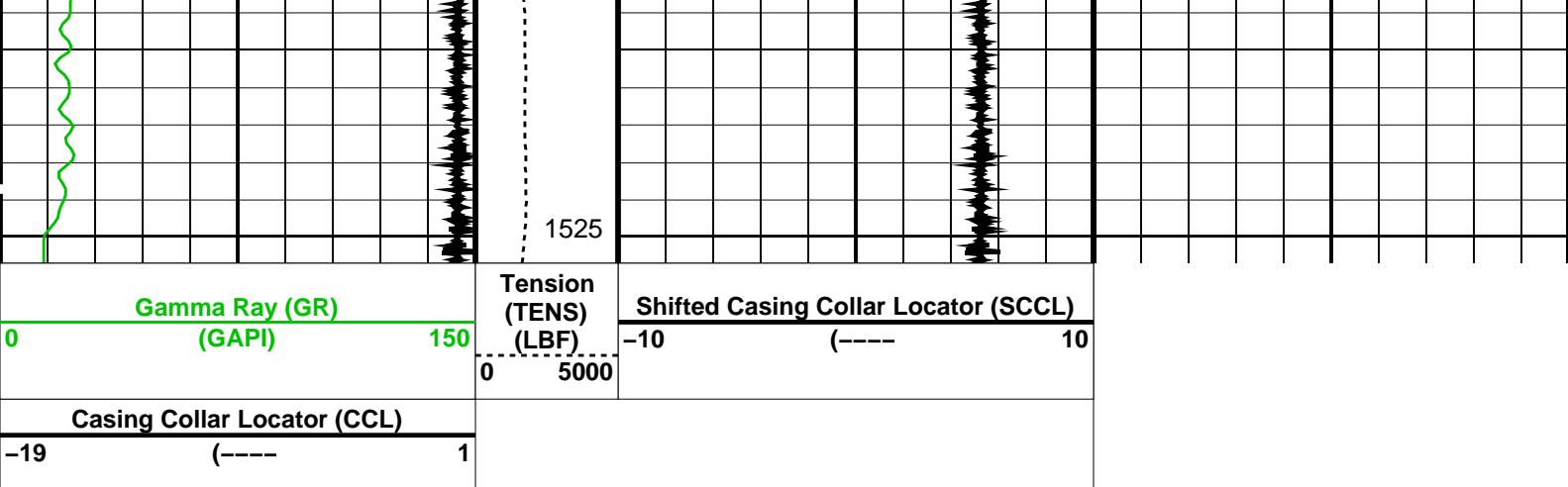
PLUG 13C0-300 PGGT-D 13C0-300

PIP SUMMARY

Time Mark Every 60 S

Casing Collar Locator (CCL)





PIP SUMMARY			
Time Mark Every 60 S			
Format: PERFO_1		Vertical Scale: 1:200	
Graphics File Created: 30-Oct-2005 10:38			
OP System Version: 13C0-300			
MCM			
PLUG	13C0-300	PGGT-D	13C0-300
Output DLIS Files			
DEFAULT	PLUG_005LUP	FN:4	PRODUCER 30-Oct-2005 10:38

Company:	Esso Australia Ltd.	Schlumberger
Well:	BMA A-1a	
Field:	Bream A	
Rig:	Rig 453 / Prod 3	
Country:	Australia	
EZSV for 9 5/8" Casing Scale 1:200		