

Type		Petrofree SBM									
Mud weight	ppg	10.05									
Solids	%	13.3									
Chlorides	mg/L	204100									
Rm	ohm.m@°C	n/a									
Rmf	ohm.m@°C	n/a									
Rmc	ohm.m@°C	n/a									
Potassium	%	0.0									
Environmental data											
GR											
Mud weight	ppg	10.05									
Bit size	in.	8.5									
Resistivity											
Neutron porosity											
Hole Size	in.	8.5									
Mud weight	ppg	10.05									
Temperature	°C	120.0									
Mud salinity	ppm	27227									
Formation salinity											
Recording rate 1	SEC	5 sec.									
Recording rate 2	SEC	5 sec.									
Filtering GR		3 pt.									
Filtering density		3 pt.									
Filtering Neutron		3 pt.									
Company representative	B. Steel	T. Paltridge	R. Bain								
Schlumberger D&M Personnel	J. Dolan	M. Y. Tan	D. Hastie	T. Auger	C. Soper	B. Hanson					

DISCLAIMER

THE USE OF AND RELIANCE UPON THIS RECORDED-DATA BY THE HEREIN NAMED COMPANY (AND ANY OF ITS AFFILIATES, PARTNERS, REPRESENTATIVES, AGENTS, CONSULTANTS AND EMPLOYEES) IS SUBJECT TO THE TERMS AND CONDITIONS AGREED UPON BETWEEN SCHLUMBERGER AND THE COMPANY, INCLUDING: (a) RESTRICTIONS ON USE OF THE RECORDED-DATA; (b) DISCLAIMERS AND WAIVERS OF WARRANTIES AND REPRESENTATIONS REGARDING COMPANY'S USE OF AND RELIANCE UPON THE RECORDED-DATA; AND (c) CUSTOMER'S FULL AND SOLE RESPONSIBILITY FOR ANY INFERENCE DRAWN OR DECISION MADE IN CONNECTION WITH THE USE OF THIS RECORDED-DATA.

OTHER SERVICES FOR RUN2

Xceed* RSS
D&I Survey

REMARKS: RUN NUMBER 2

8-1/2 in. hole section was drilled from 845.0 m to 4955.0 m.

Depth is referenced to Driller's Depth.

All data presented is from tool memory.

GR corrected for mud weight, tool and bit size.

ARC*6 resistivity is corrected for bit size, mud resistivity and borehole temperature.

Neutron porosity is calculated with a limestone matrix and is corrected for bit size, borehole salinity, temperature and mud hydrogen index.

PEF readings were affected by the presence of Barite in the mud system.

Caliper data spikes are due to stick and slip while drilling.

Mud type is Petrofree SBM.

POOH due to TD.

EQUIPMENT DESCRIPTION

RUN2

DOWNHOLE EQUIPMENT

6-3/4 in. ADN*6C	Neutron F	34.72	36.69
S/N: 0403	Neutron N	34.57	
8-1/4 in. Stabiliser	Density S	33.70	
NSR-M A202	Density L	33.60	
GSR-J A1994	UltraSonic	33.22	
Software: V8.3A02	R-O Port	32.46	
6-3/4 in. Sonic*6			30.09
S/N: 34641	Receiver	27.03	
Software: V6.4B01	R-O Port	26.63	
	Transmitter	23.59	
6-3/4 in. PowerPulse*			22.80
MDC FA28	D&I	18.55	
MEC 1080			
MDI 491			
MVC 095			
Software: V8.0C00			
	R-O Port	11.48	
8-3/8 in. In Line Stabiliser T5	T3	11.38	14.89
S/N: S15535-2	T1	11.07	
6-3/4 in. ARC*6	Gamma Ray	10.77	13.79
S/N: 669	Receiver	10.41	
Software: V9.0B00	T2	10.36	
	T4	10.11	
	ARC APRS	9.80	
		9.65	
6-3/4 in. Xceed* RSS			7.88

S/N: 059



Reed Hycalog PDC Bit
RSX 162 S/N: 209390
OD 8-1/2 in.

0.00

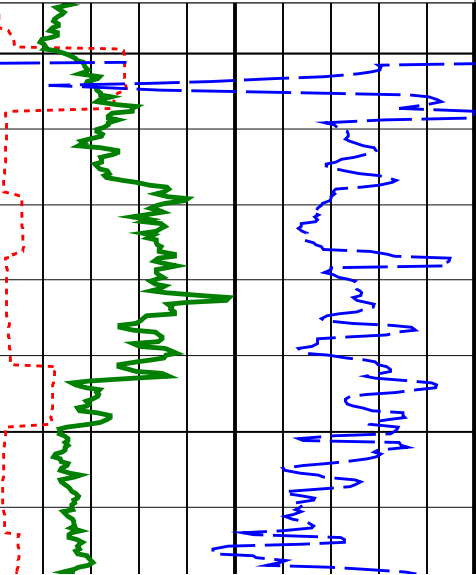
0.23

Maximum string diameter 8.50 in.
All lengths in Meters

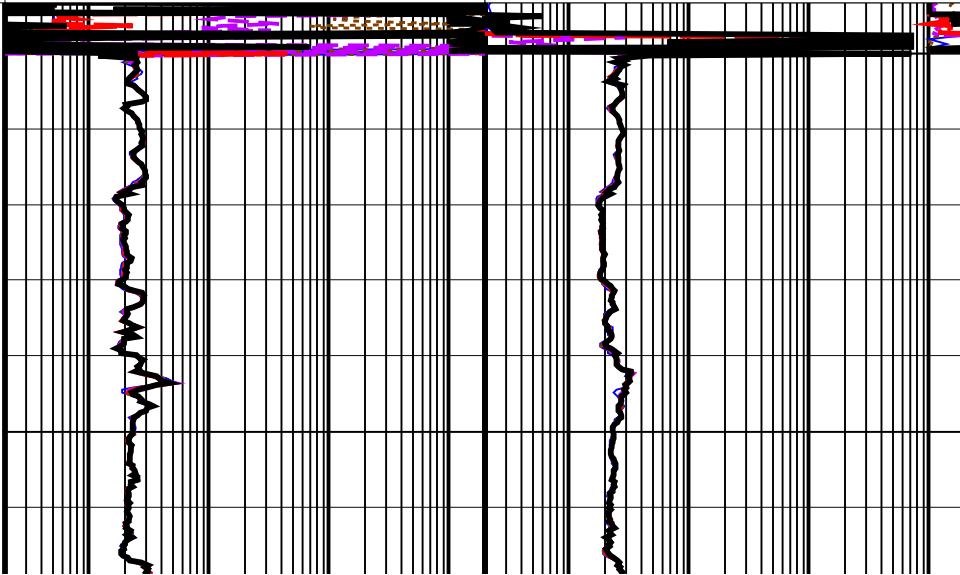
IDEAL Version: ID10_0C_04
IDF

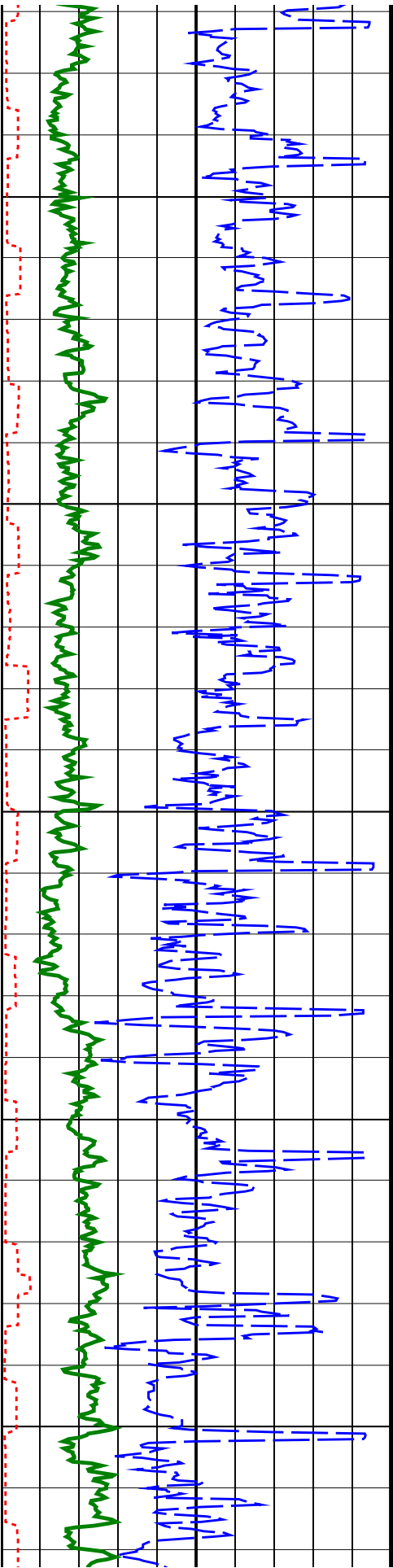
Format: VISION Resistivity 2MHz Vertical Scale: 1:500 Graphics File Created: 26-Jul-2005 11:22

<div>Rate of Penetration, Averaged over Last 5ft (ROP5_RM) 200 (M/HR) 0</div> <div>ARC Resistivity Time After Bit (TAB_ ARC_RES) 0 (HR) 10</div> <div>ARC Gamma Ray (GR_ARC) 0 (GAPI) 200</div>	ARC Phase-Shift Resistivity 40-in. at 2 MHz (P40H)		ARC Attenuation Resistivity 40-in. at 2 MHz (A40H)	
	0.2	(OHMM) 2000	0.2	(OHMM) 2000
	ARC Phase-Shift Resistivity 34-in. at 2 MHz (P34H)		ARC Attenuation Resistivity 34-in. at 2 MHz (A34H)	
	0.2	(OHMM) 2000	0.2	(OHMM) 2000
	ARC Phase-Shift Resistivity 28-in. at 2 MHz (P28H)		ARC Attenuation Resistivity 28-in. at 2 MHz (A28H)	
	0.2	(OHMM) 2000	0.2	(OHMM) 2000
	ARC Phase-Shift Resistivity 22-in. at 2 MHz (P22H)		ARC Attenuation Resistivity 22-in. at 2 MHz (A22H)	
	0.2	(OHMM) 2000	0.2	(OHMM) 2000
	ARC Phase-Shift Resistivity 16-in. at 2 MHz (P16H)		ARC Attenuation Resistivity 16-in. at 2 MHz (A16H)	
	0.2	(OHMM) 2000	0.2	(OHMM) 2000



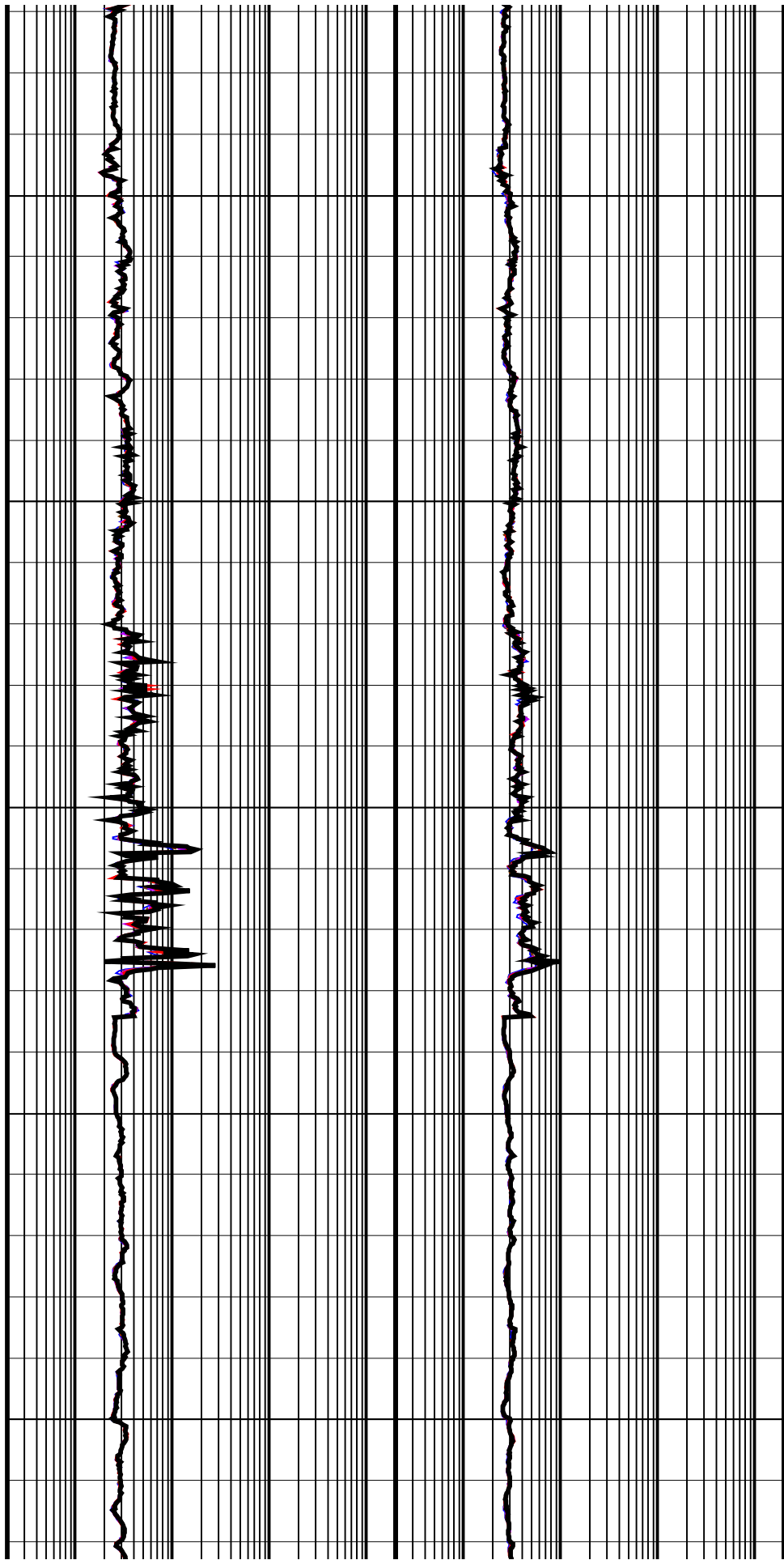
700
TVD

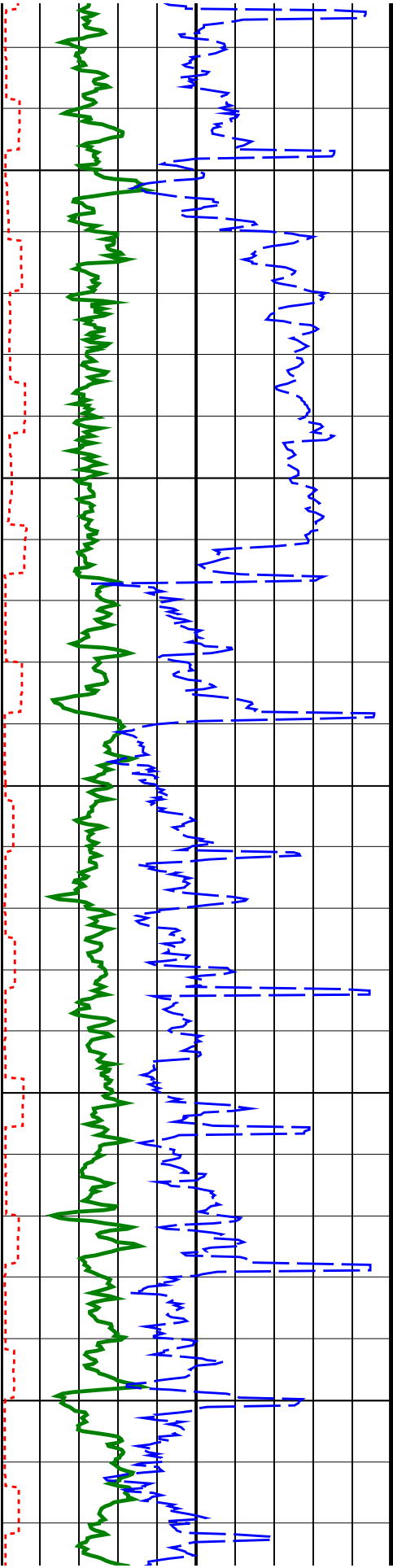




750
TVD

800
TVD

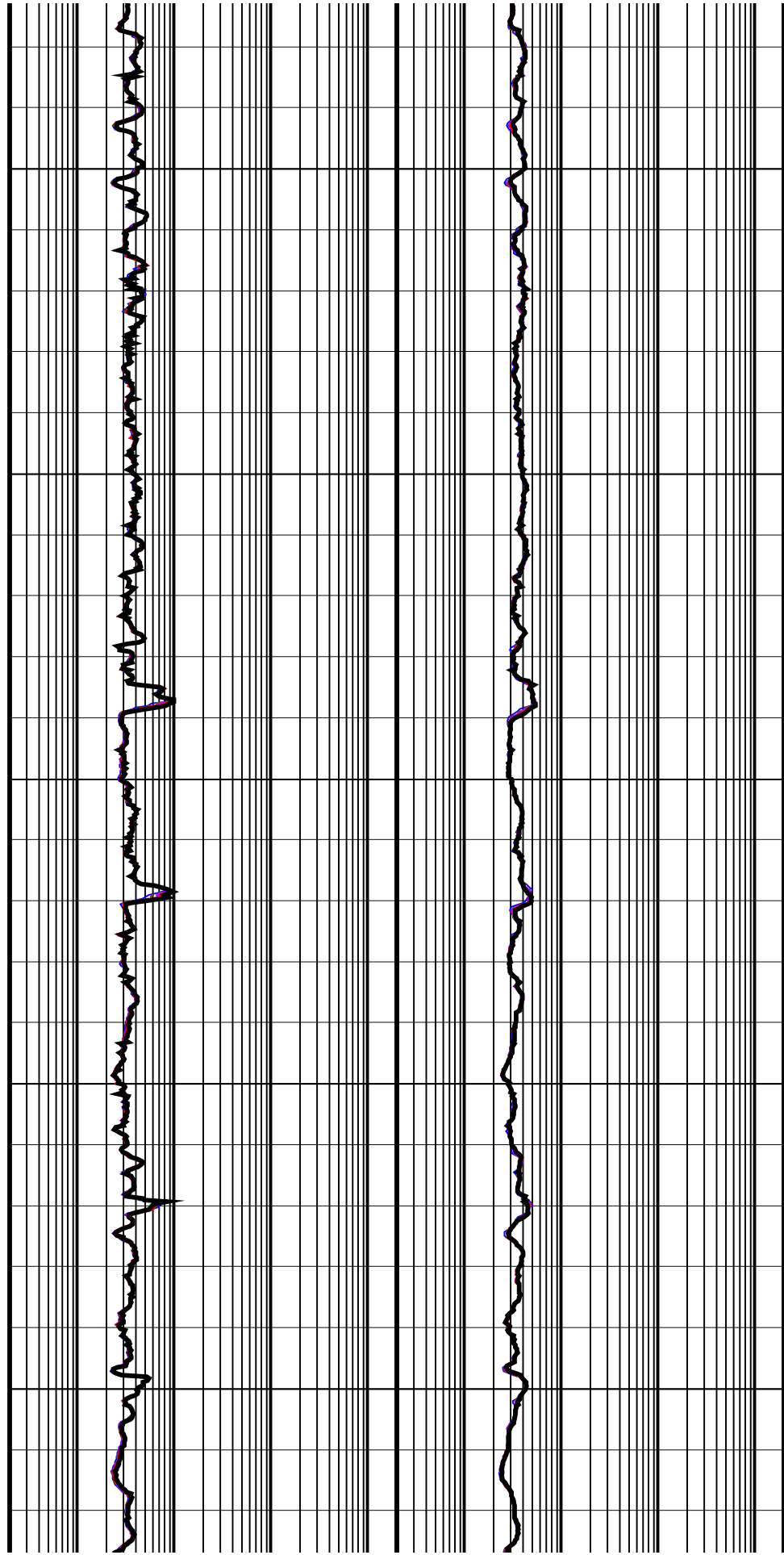


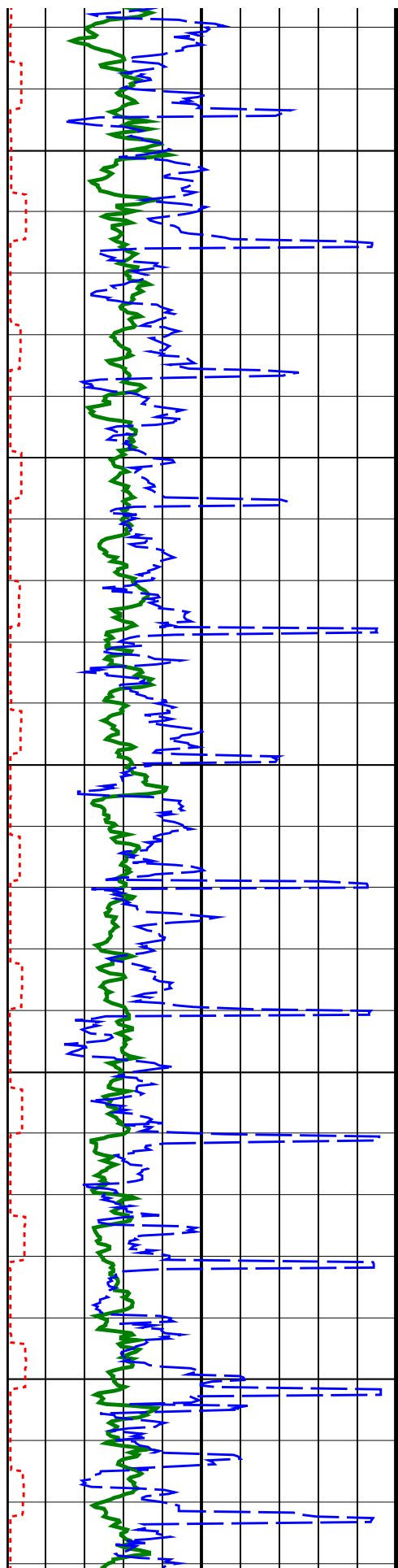


850
TVD

900
TVD

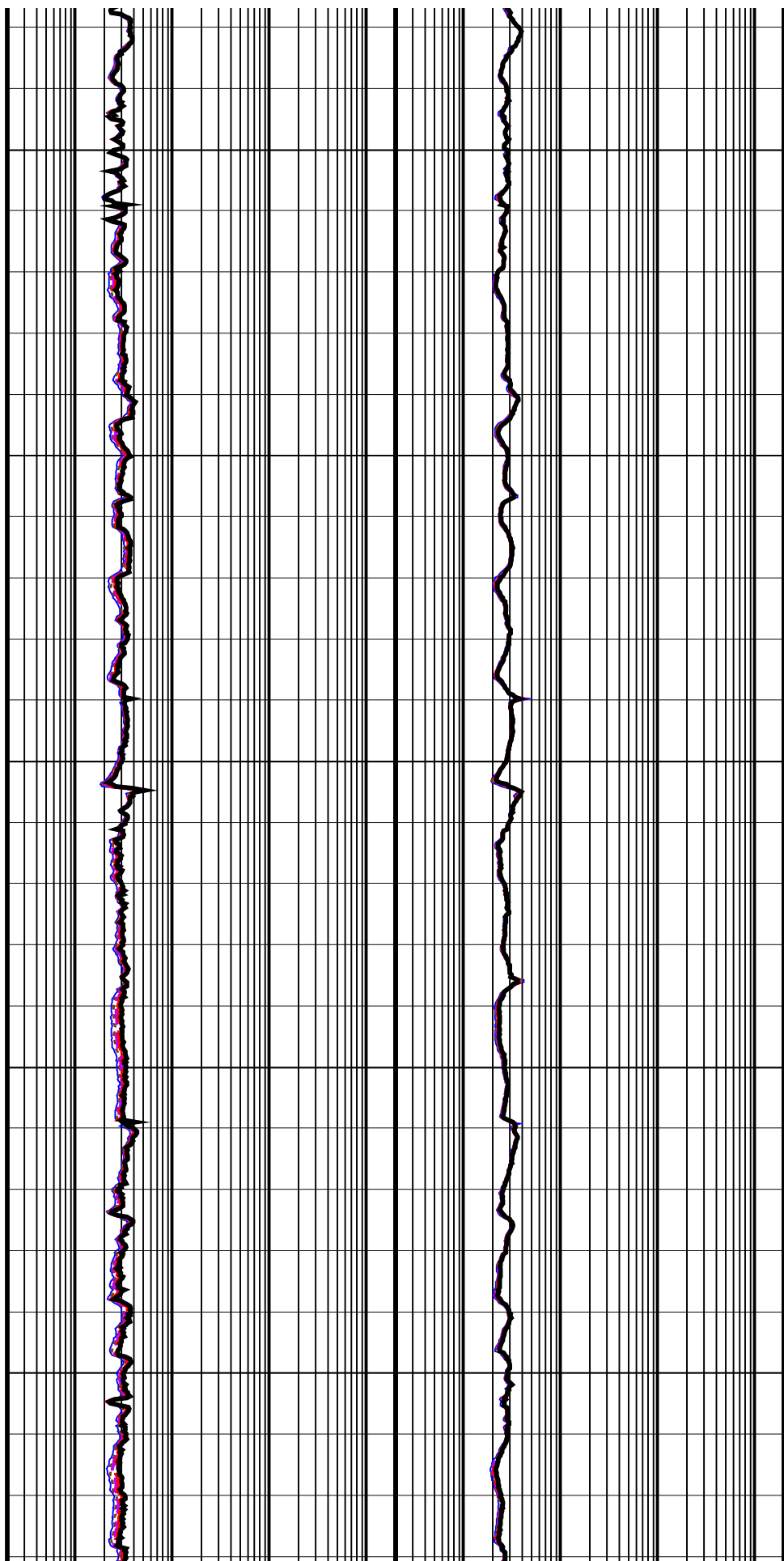
950
TVD

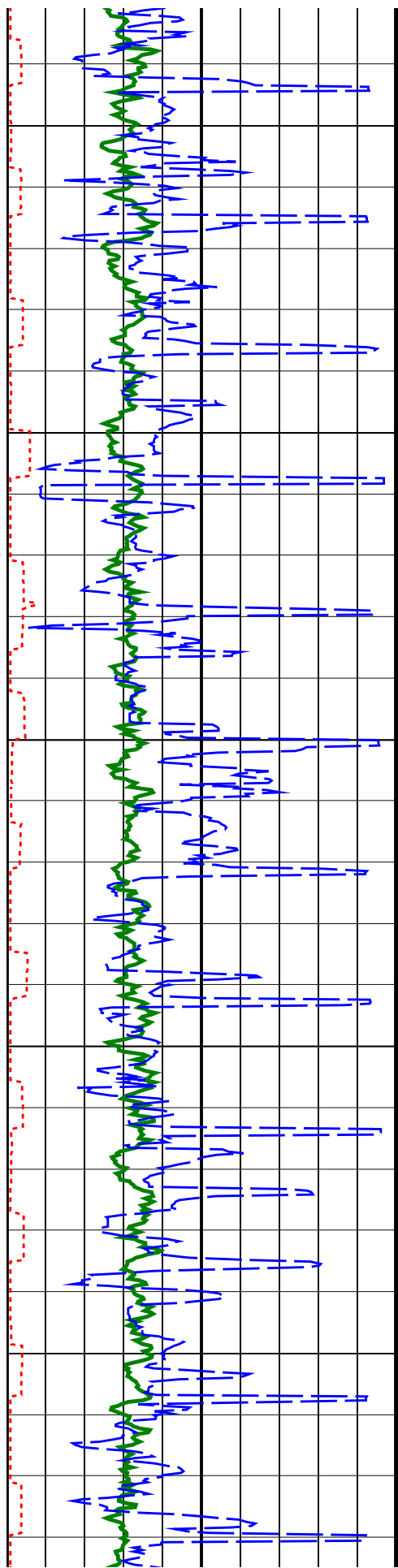




1000
TVD

1050
TVD

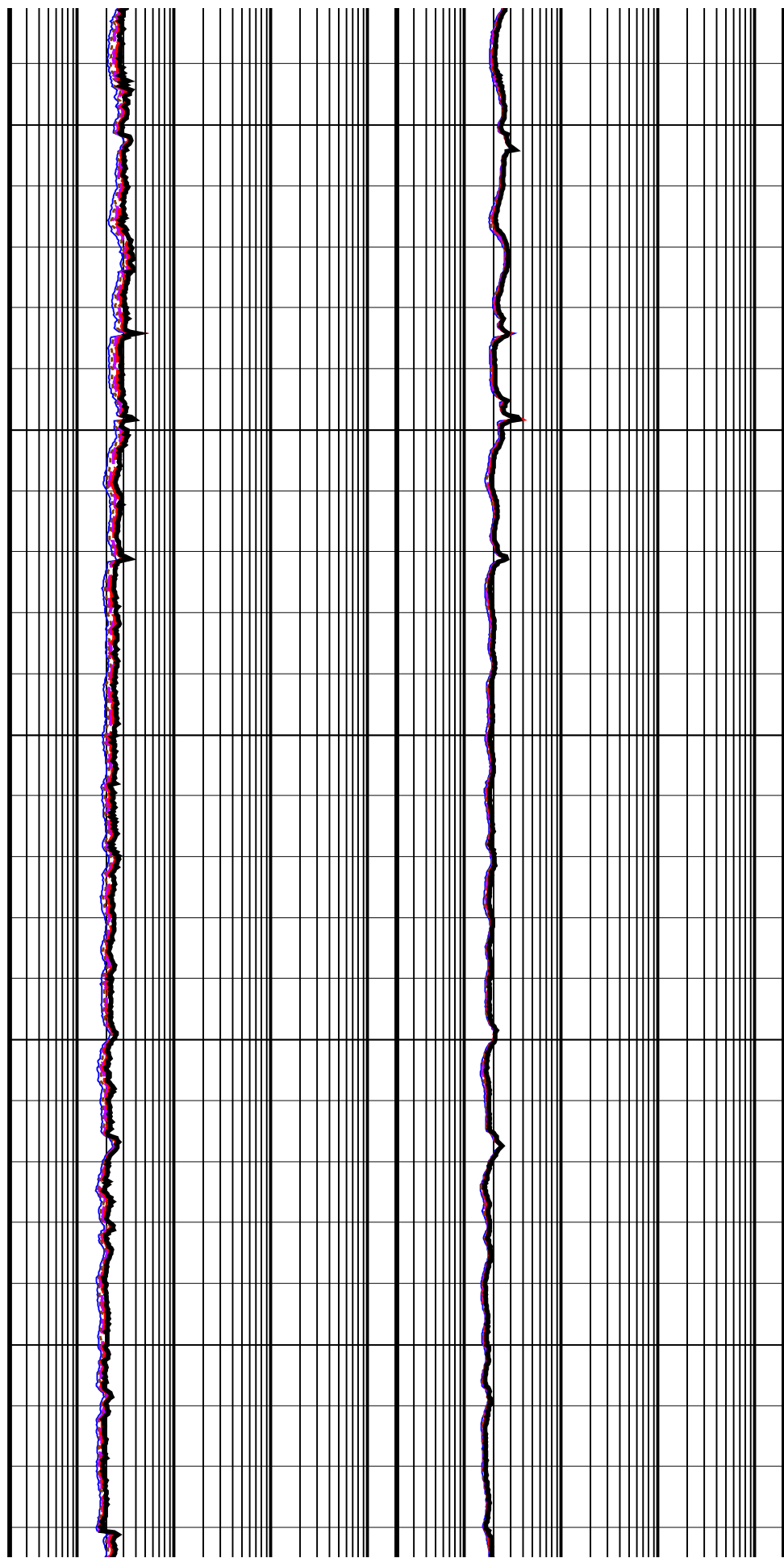


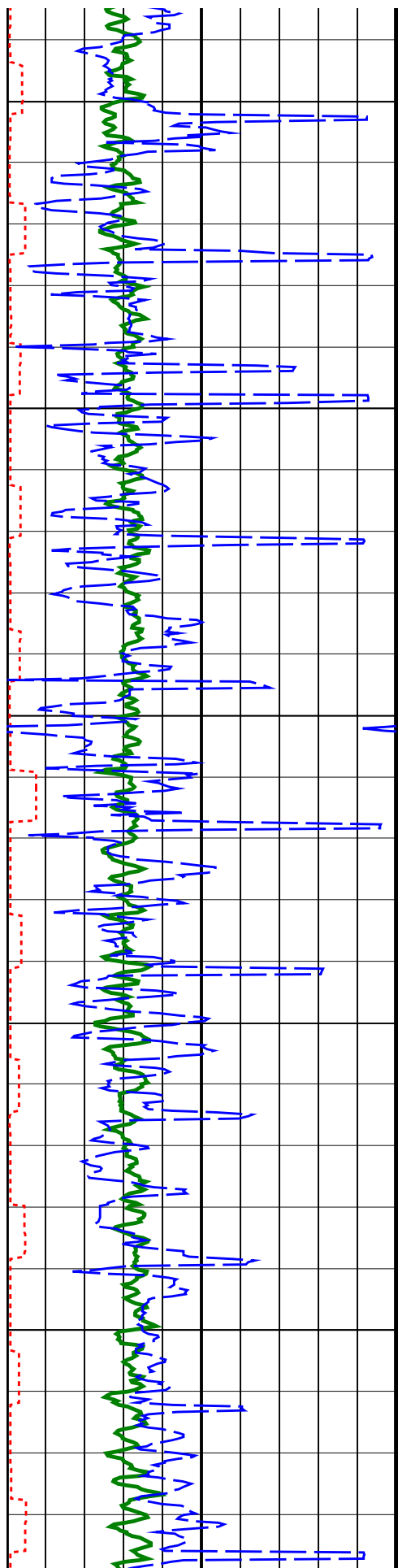


1100
TVD

1150
TVD

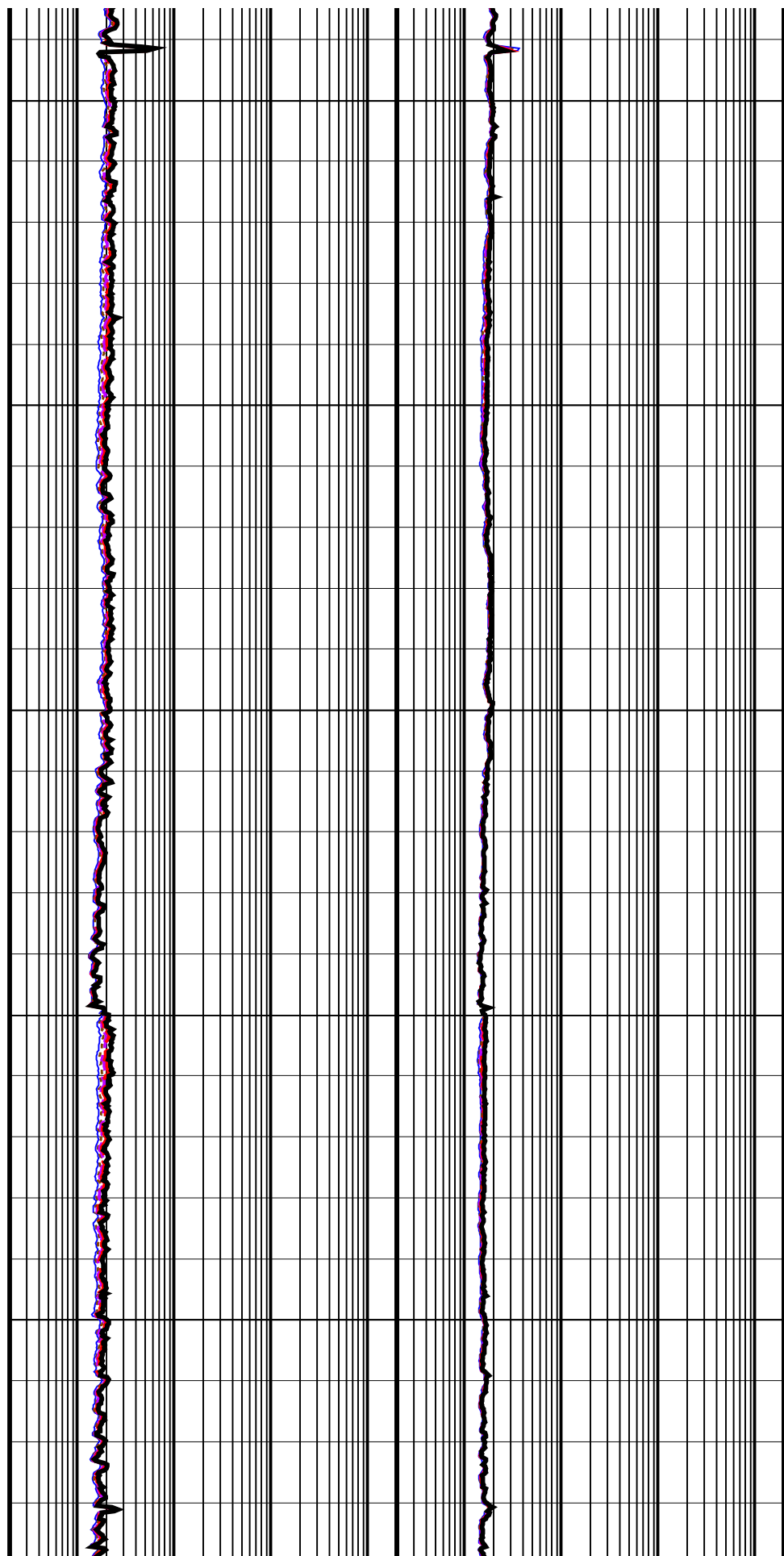
1200
TVD

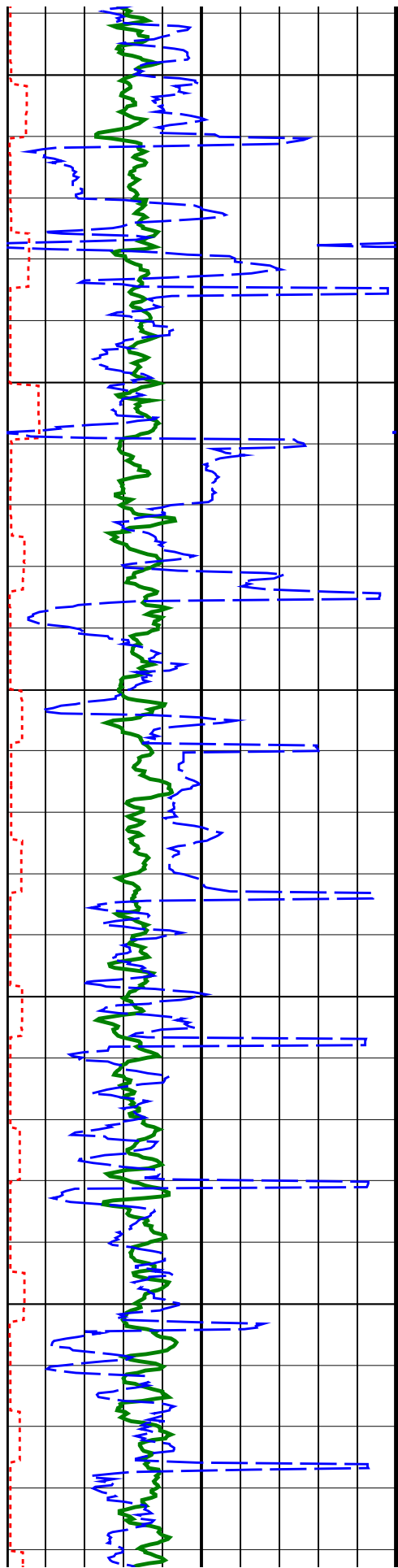




1250
TVD

1300
TVD

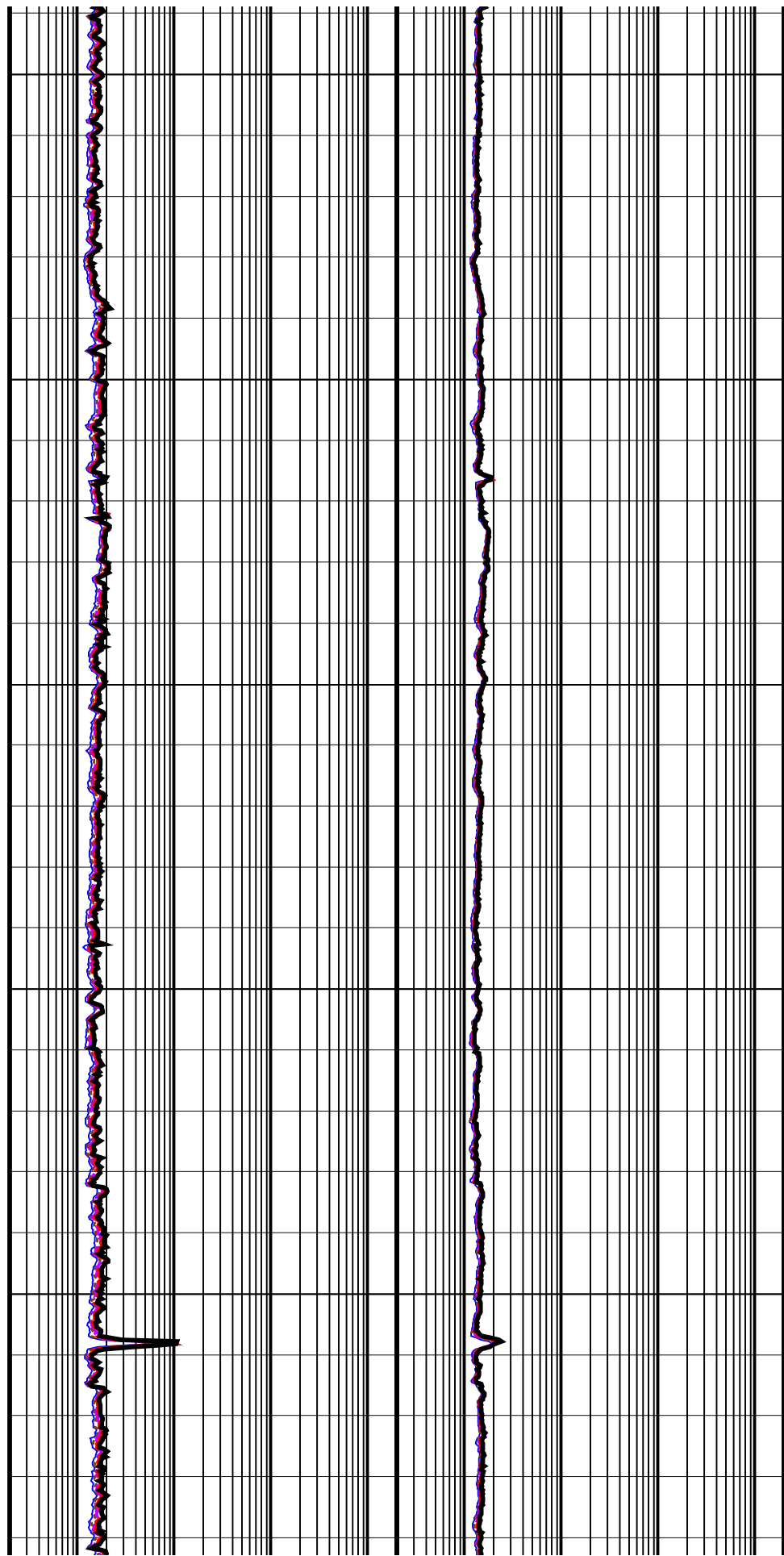


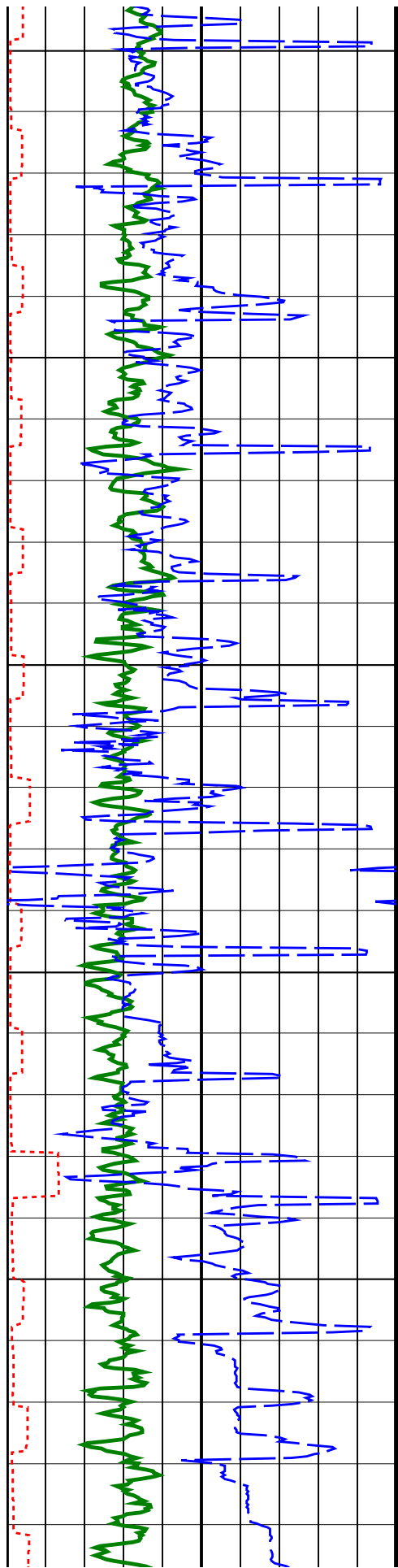


1350
TVD

1400
TVD

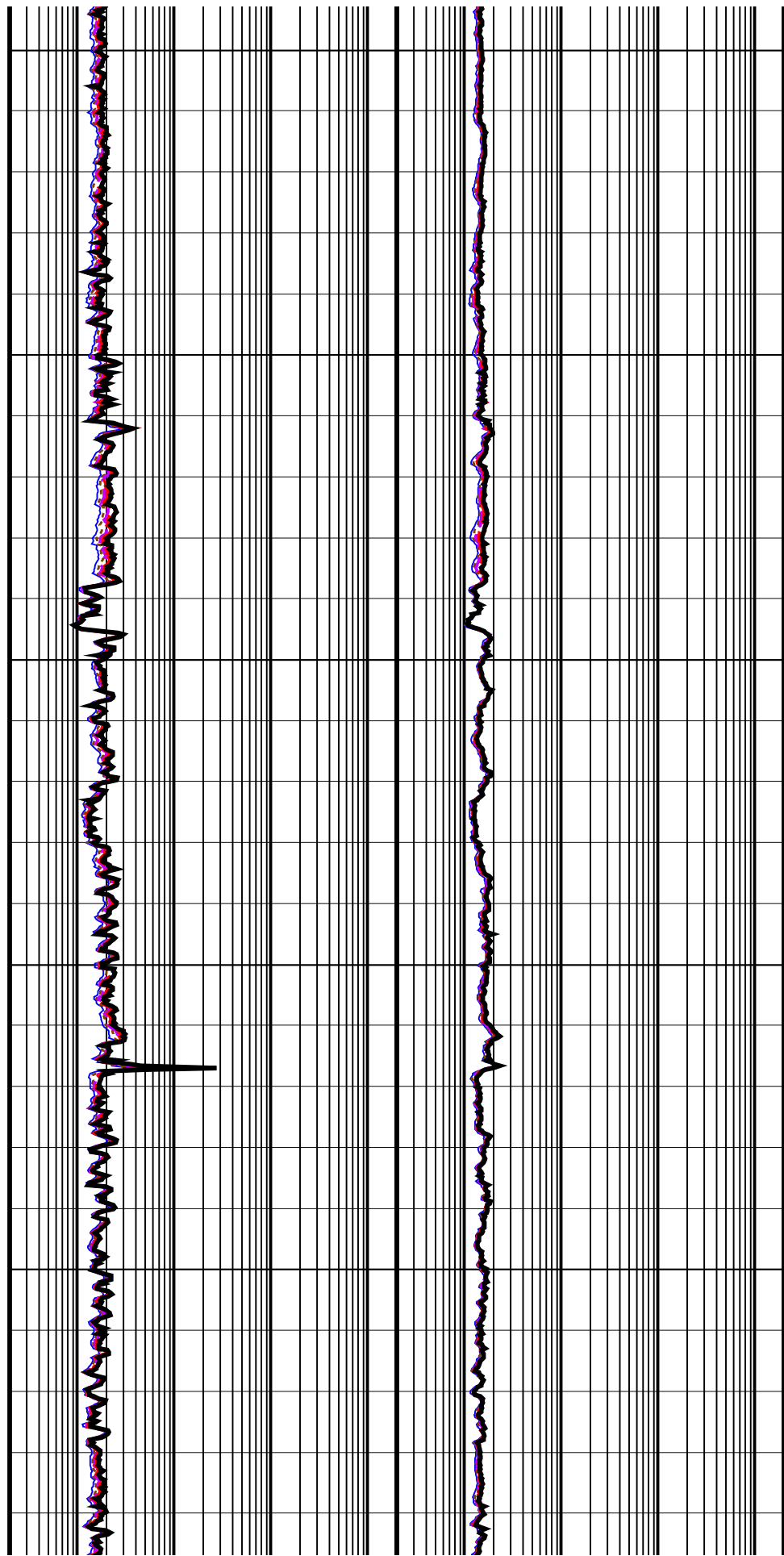
1450
TVD

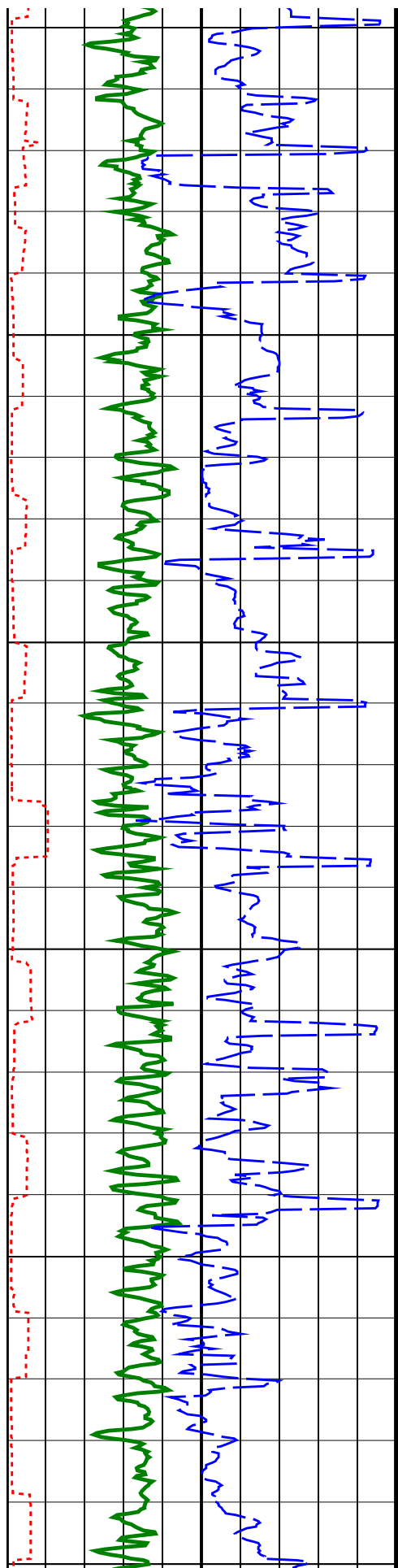




1500
TVD

1550
TVD

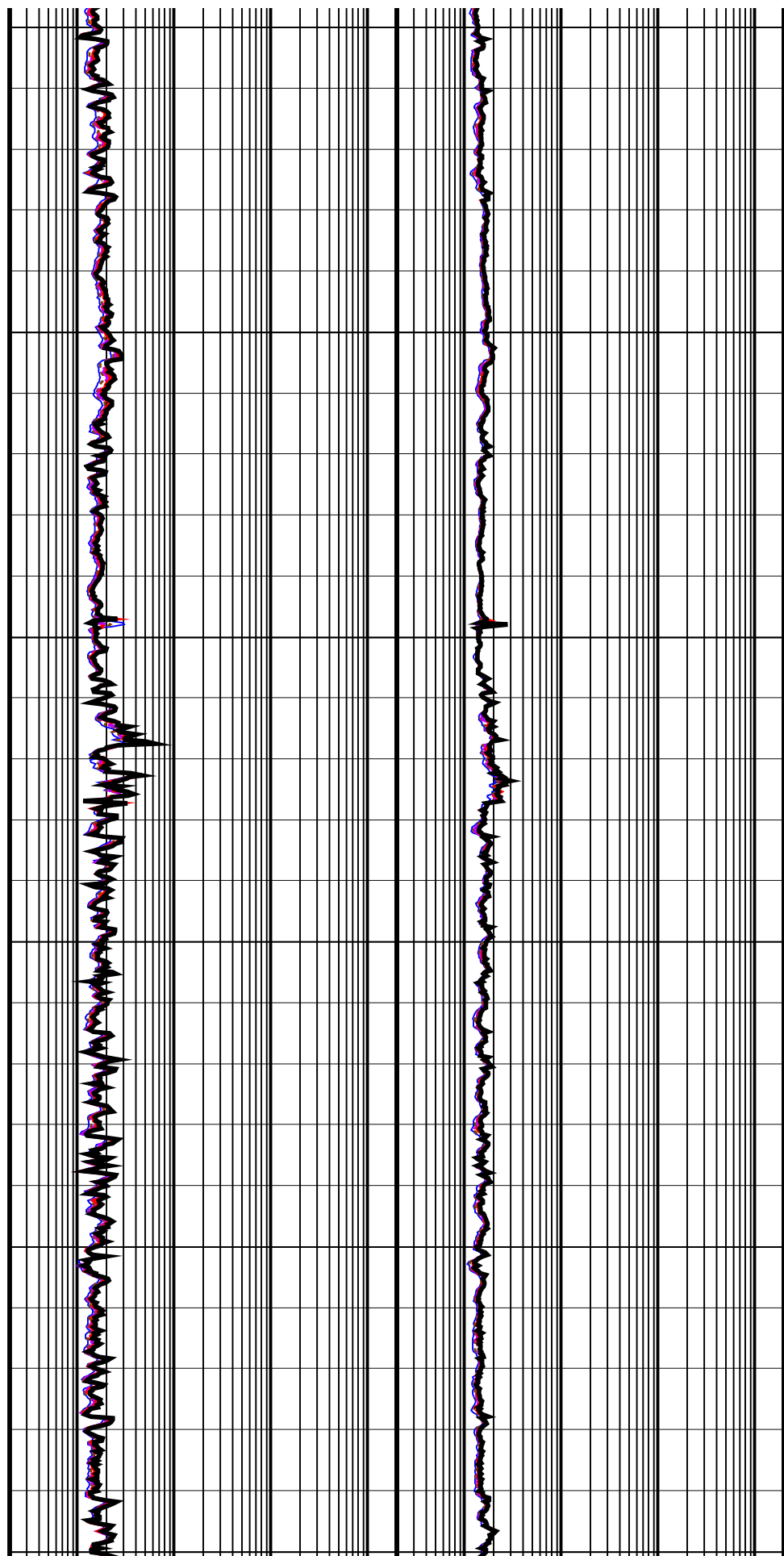


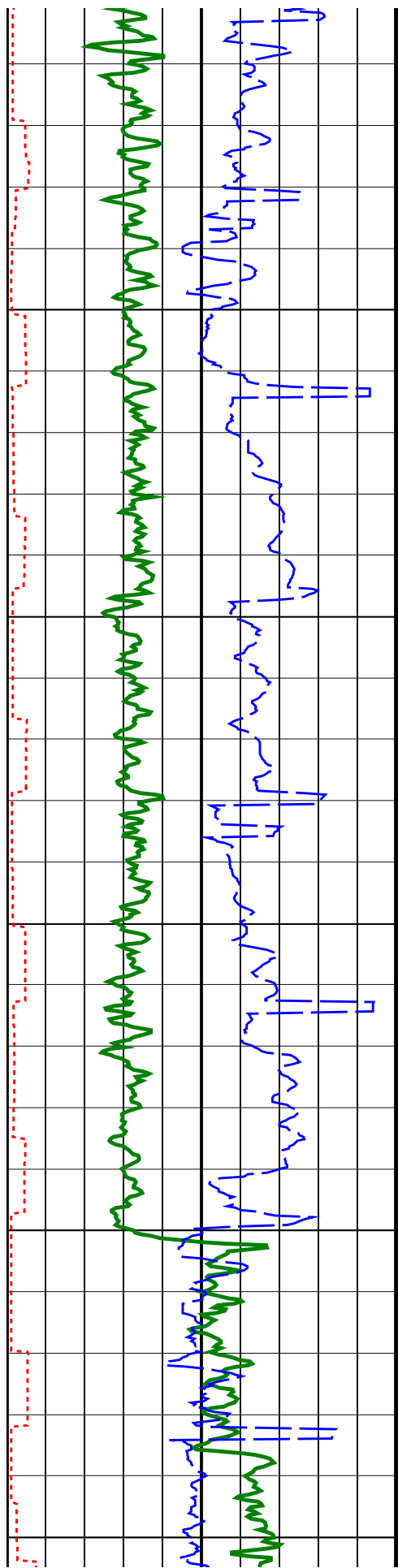


1600
TVD

1650
TVD

1700
TVD

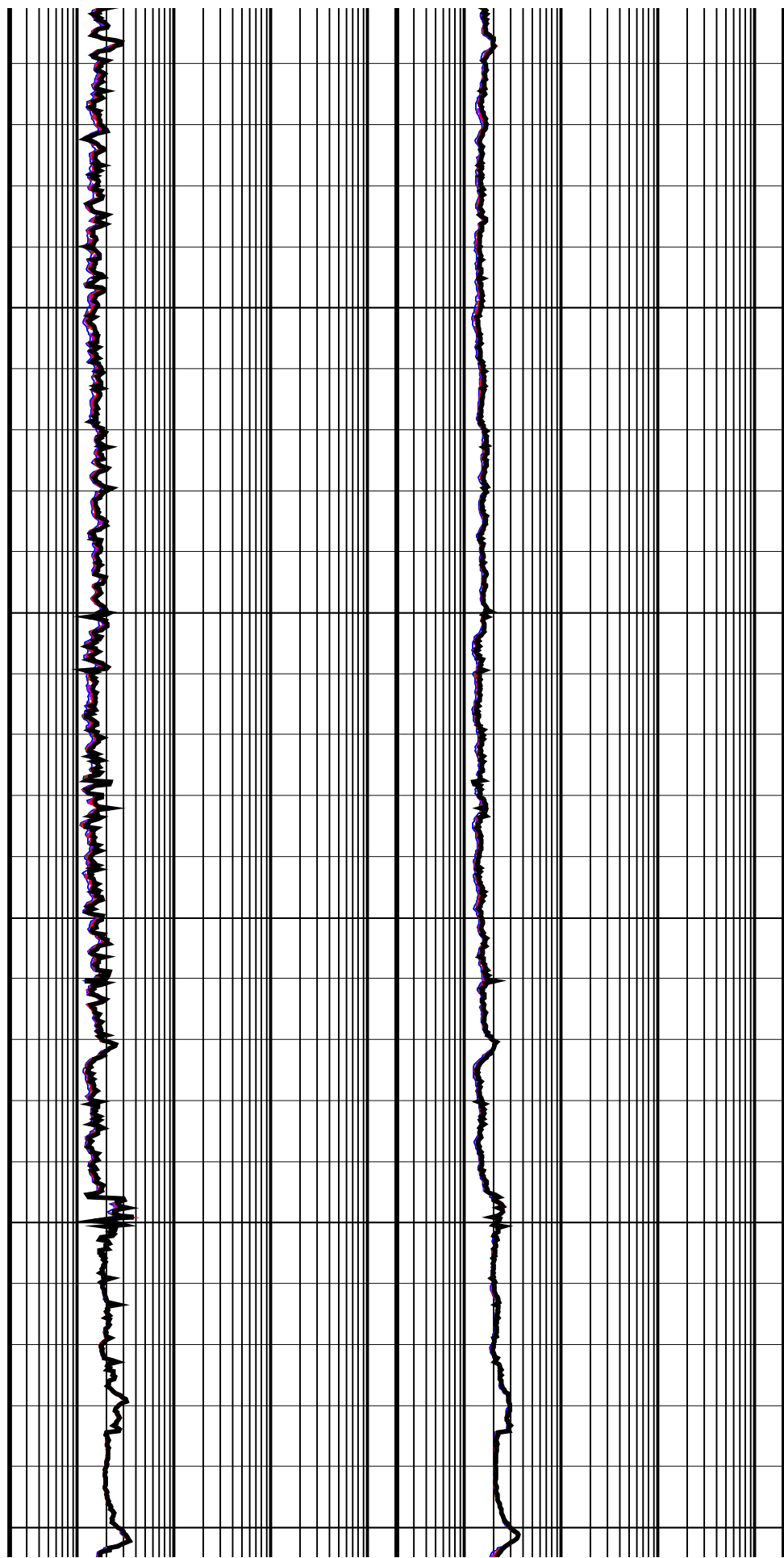


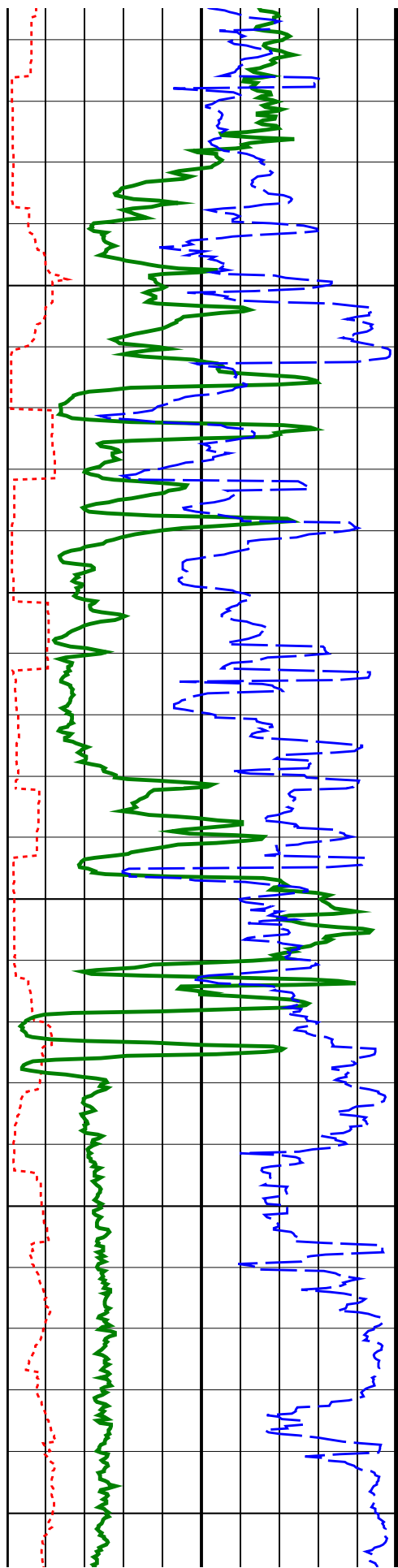


1750
TVD

1800
TVD

1850

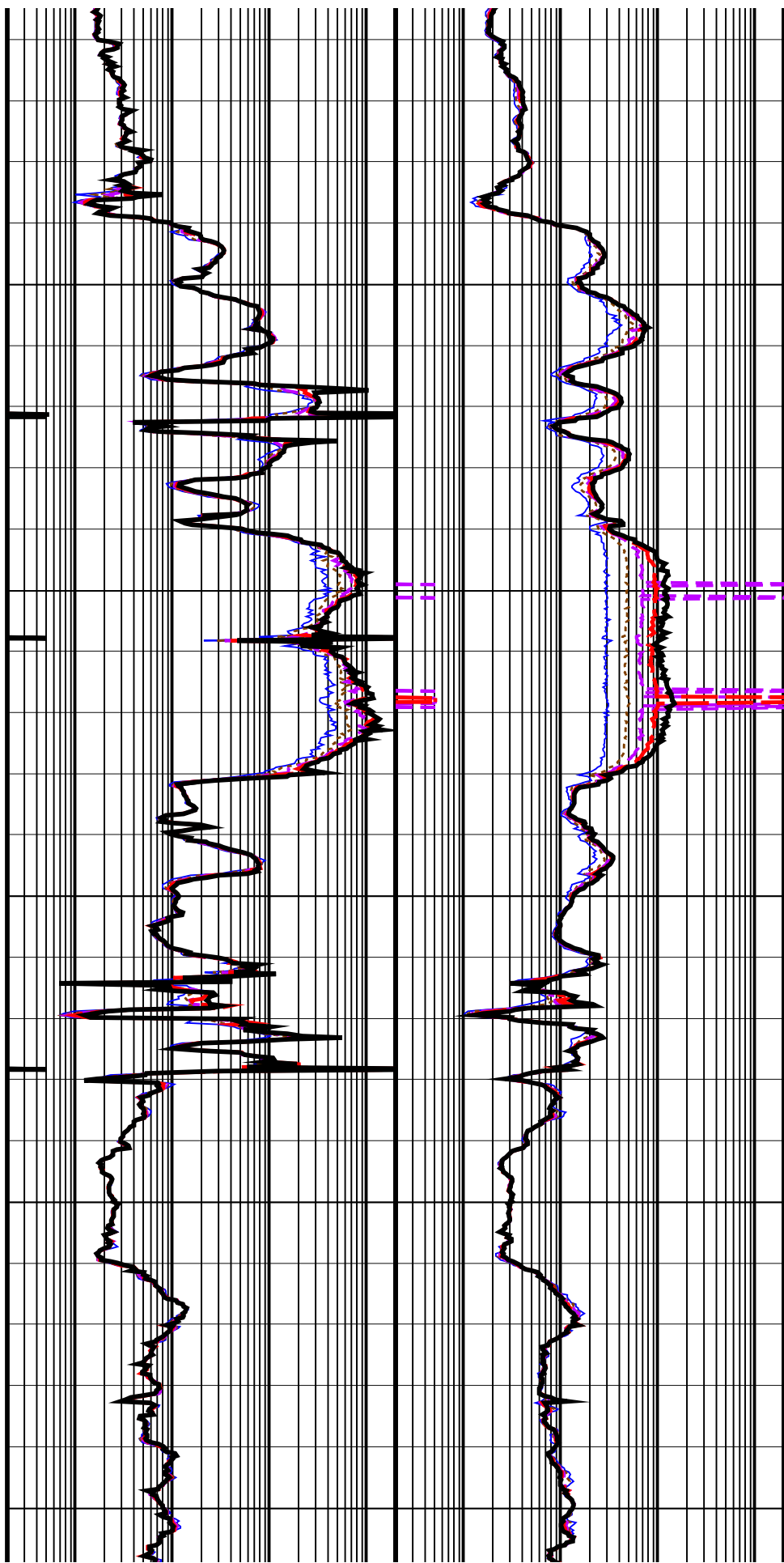


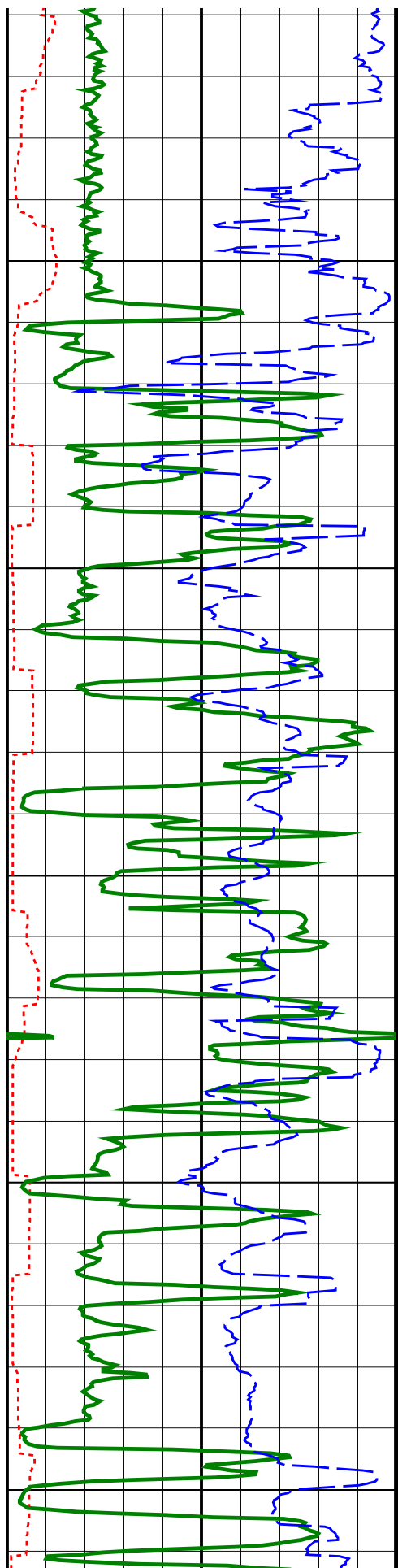


TVD

1900
TVD

1950
TVD

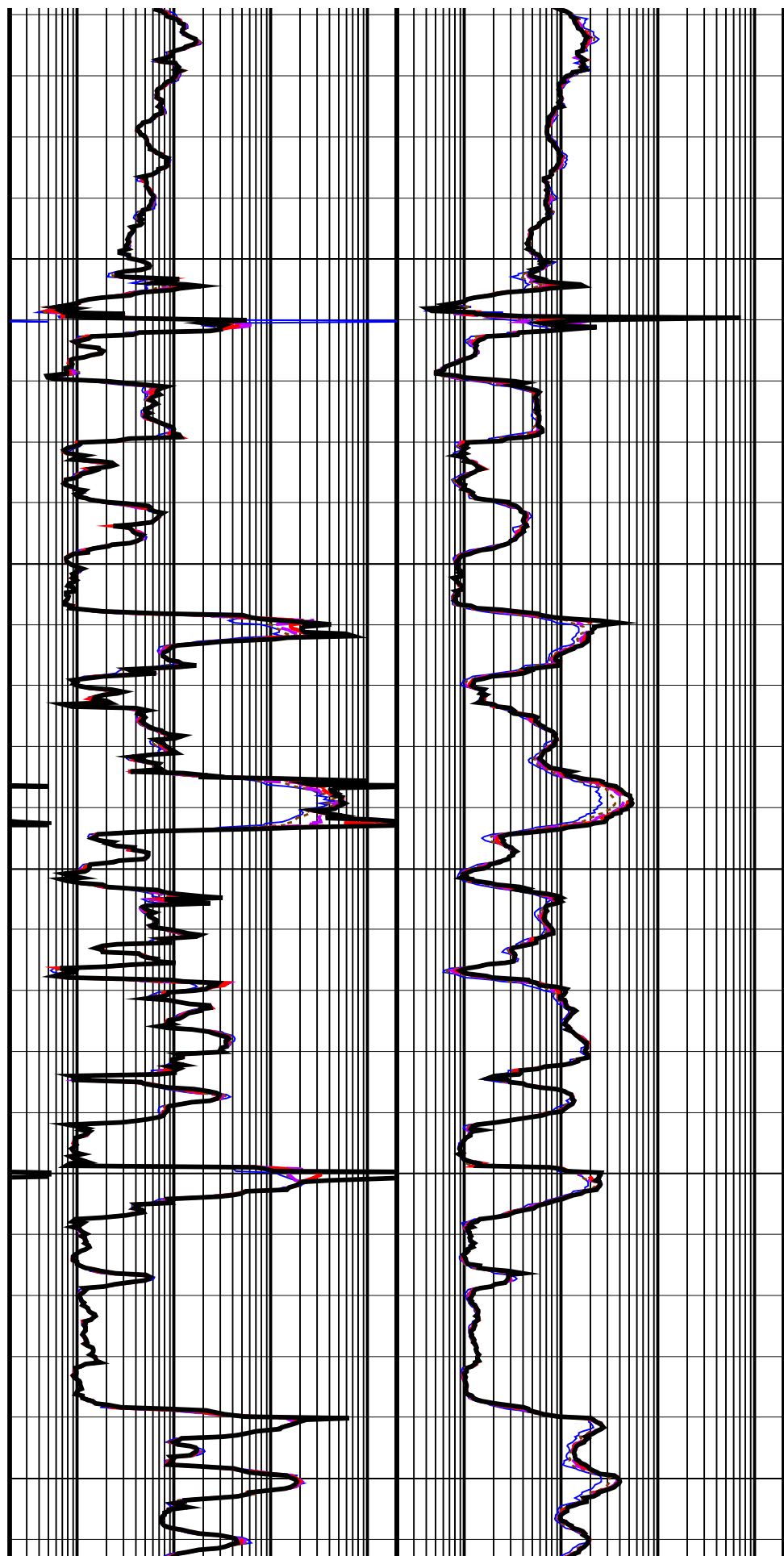


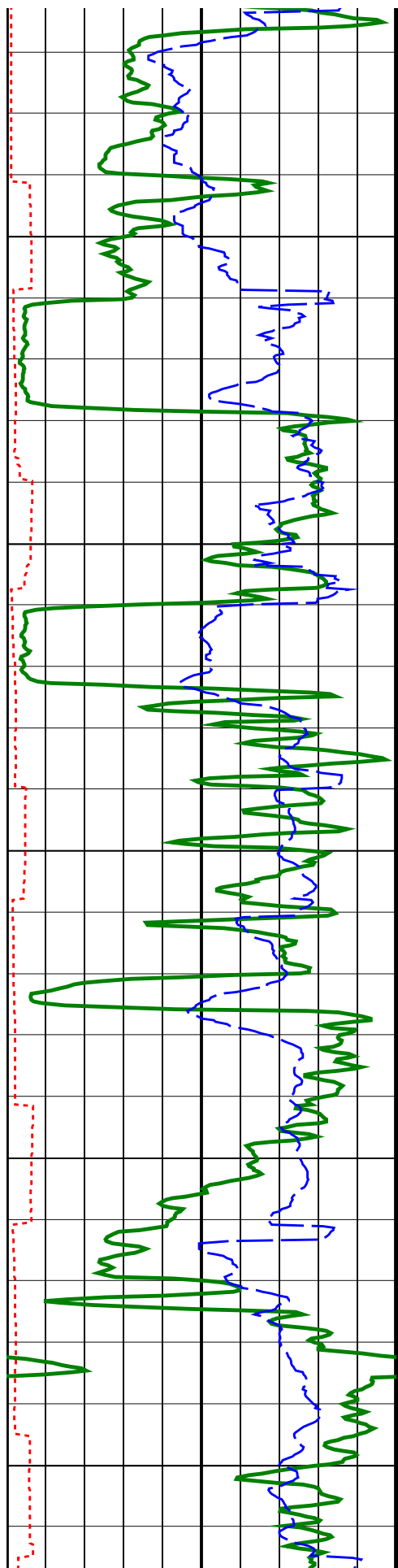


2000
TVD

2050
TVD

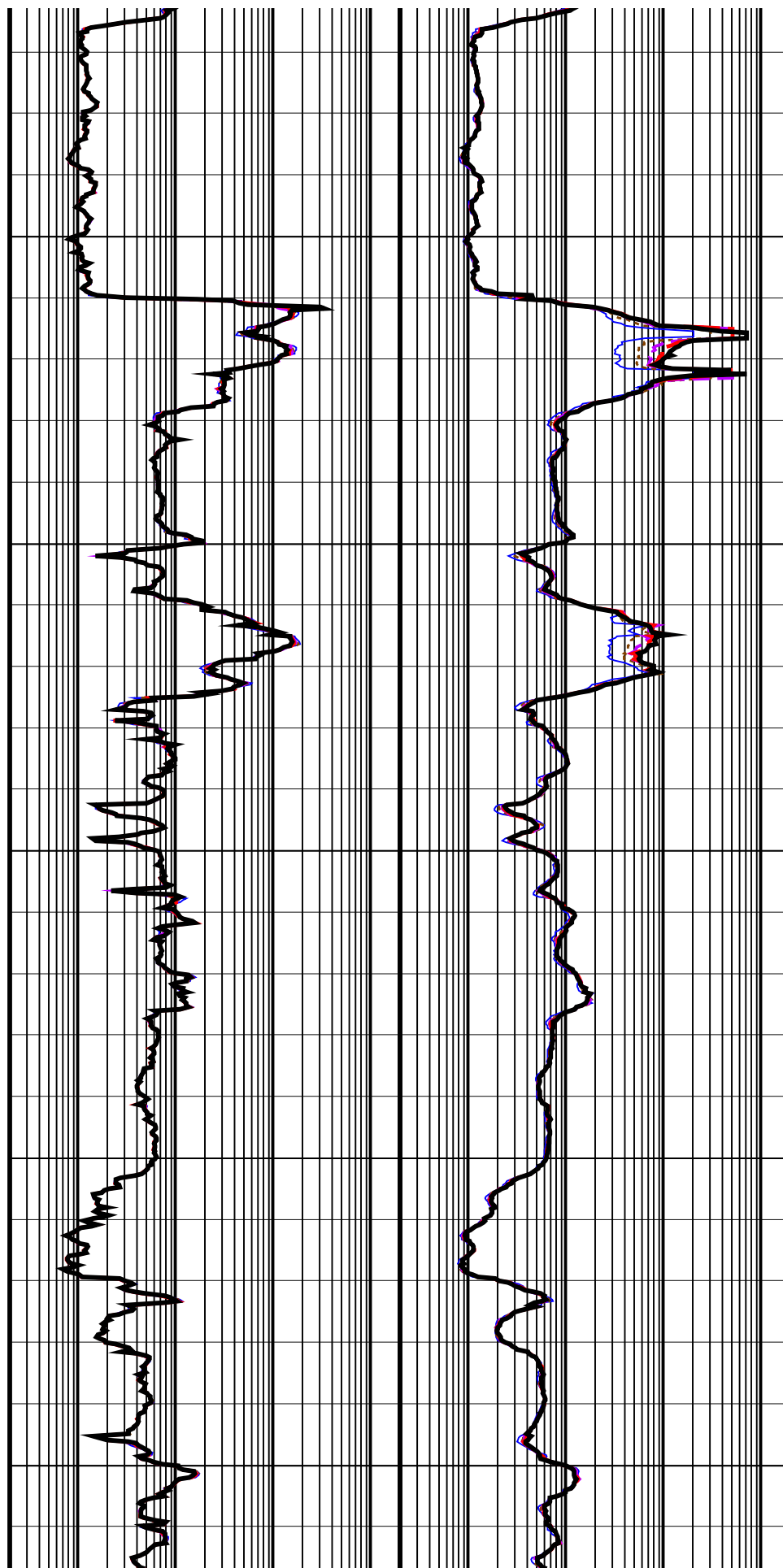
2100
TVD

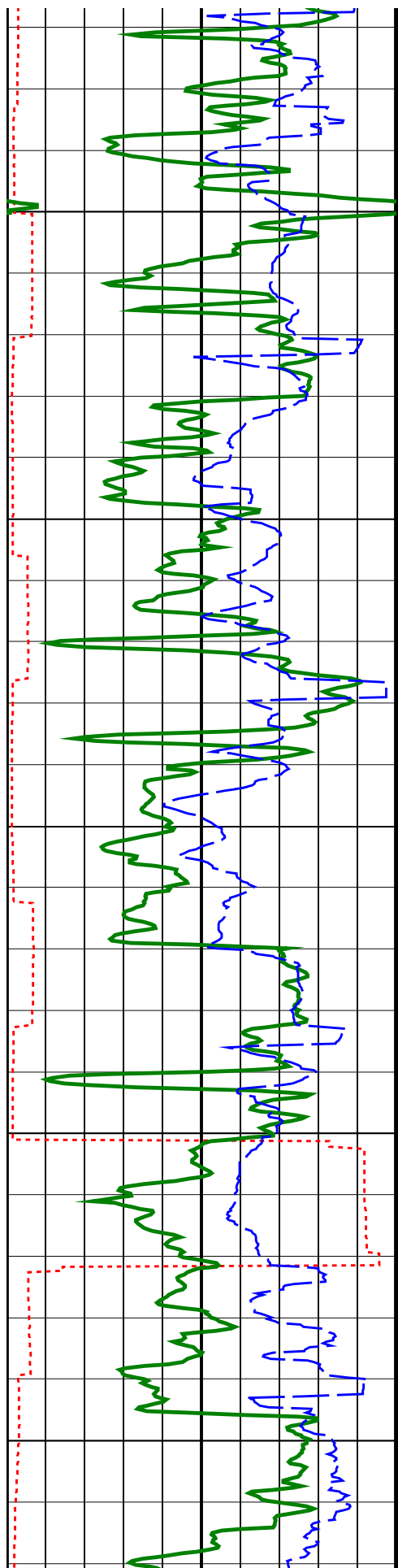




2150
TVD

2200
TVD

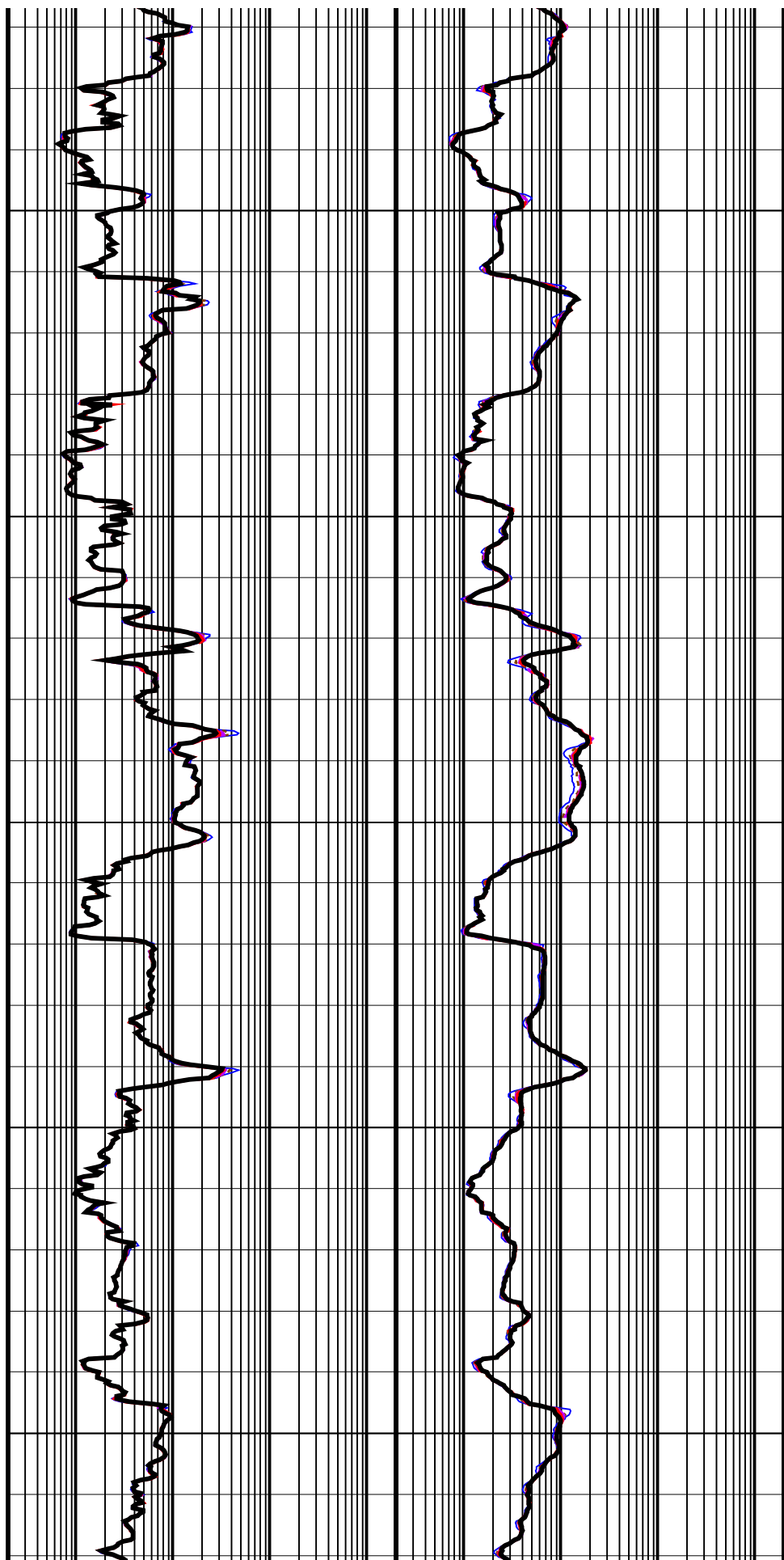


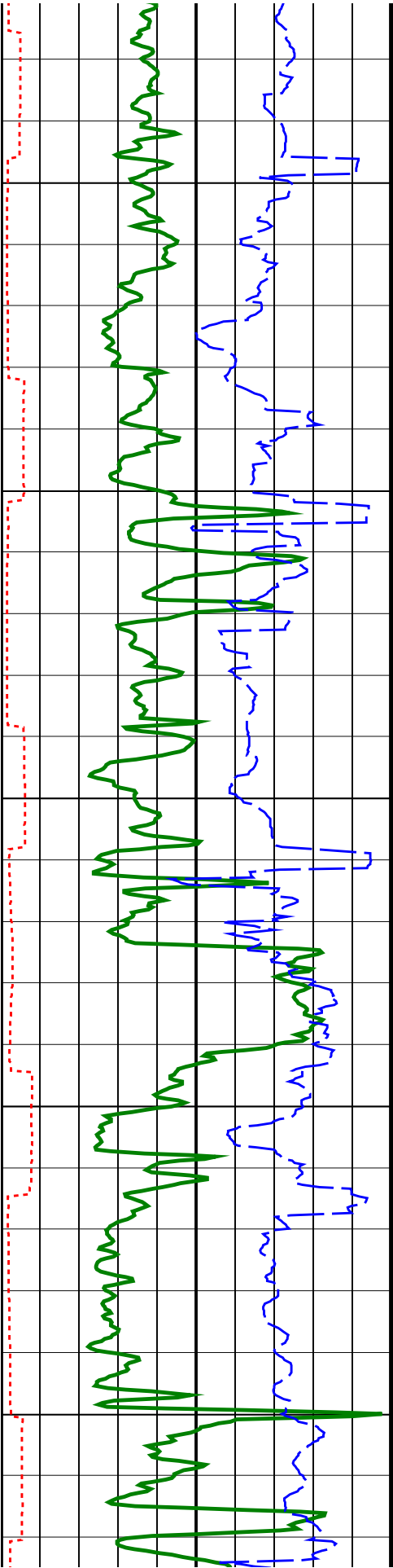


2250
TVD

2300
TVD

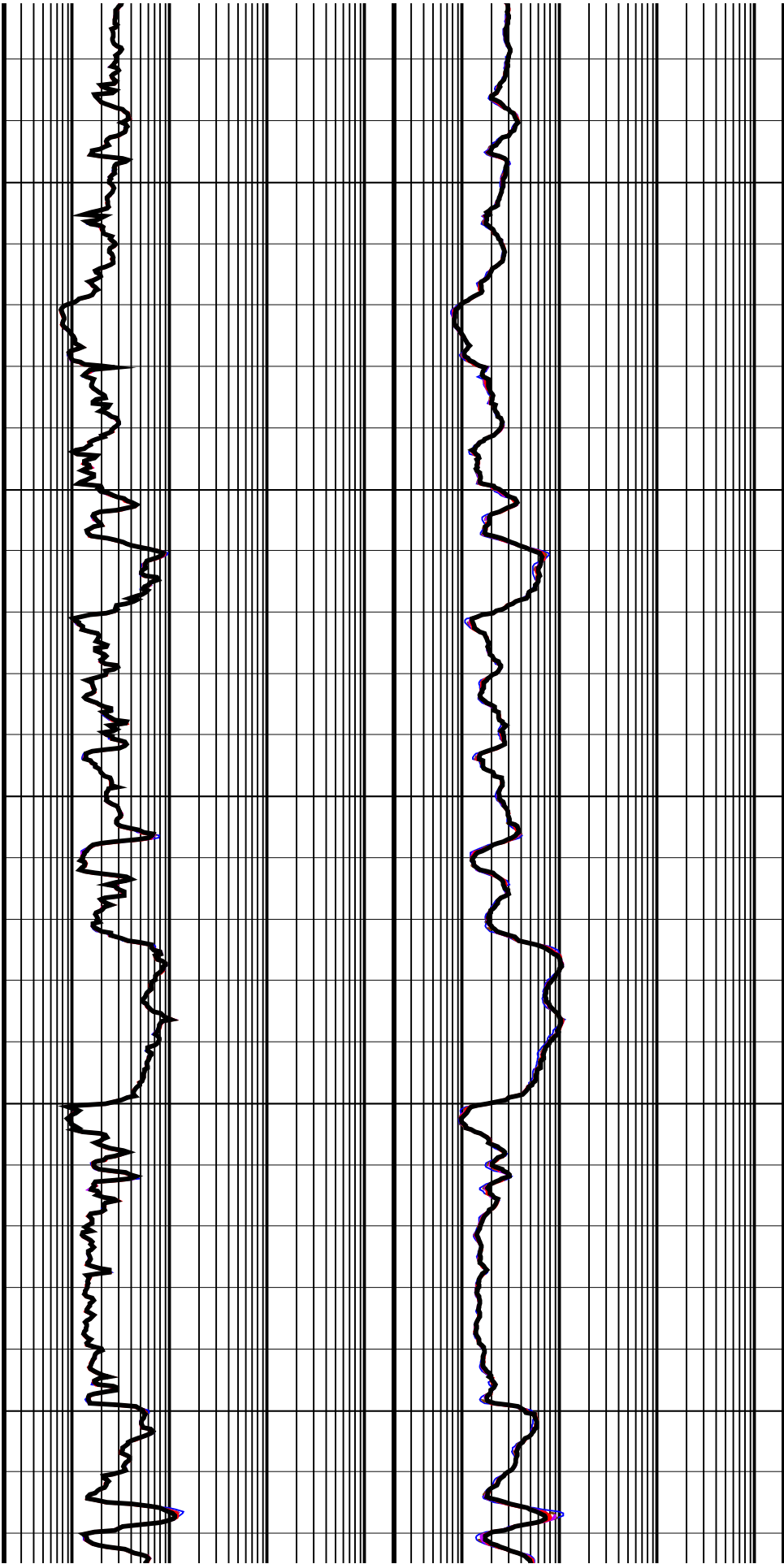
2350
TVD

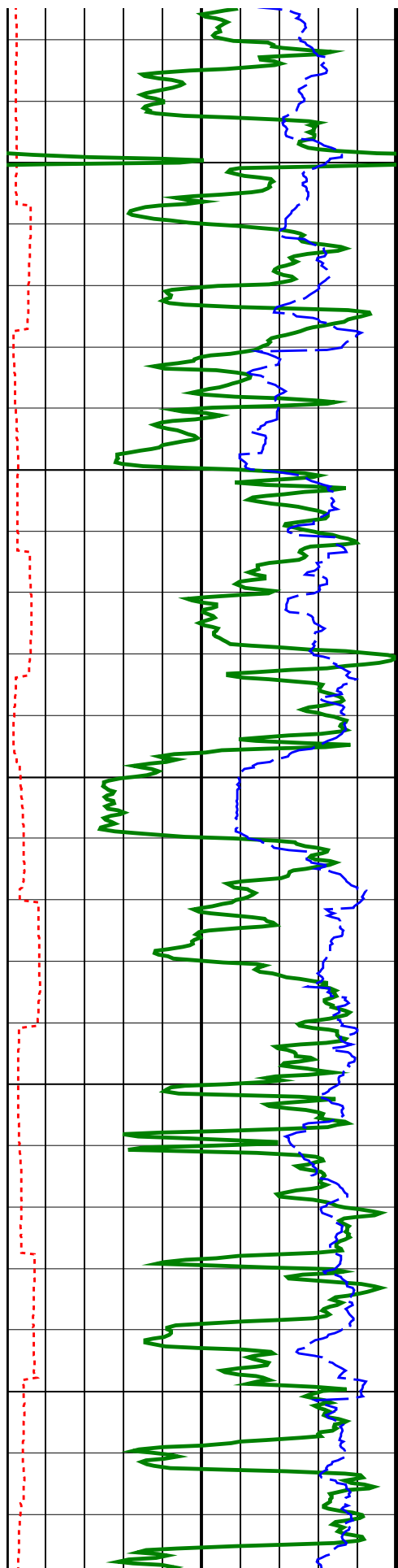




2400
TVD

2450
TVD

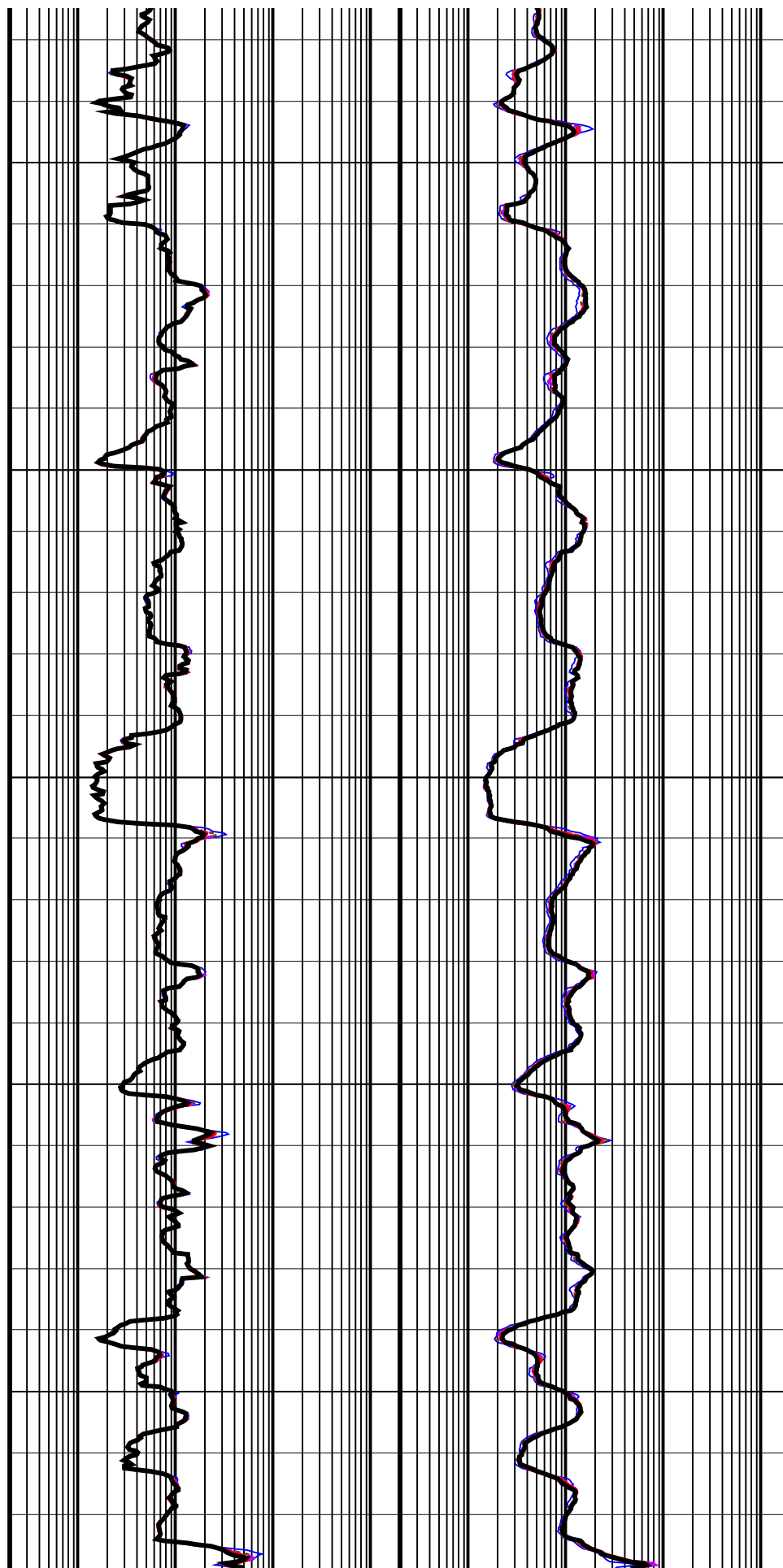


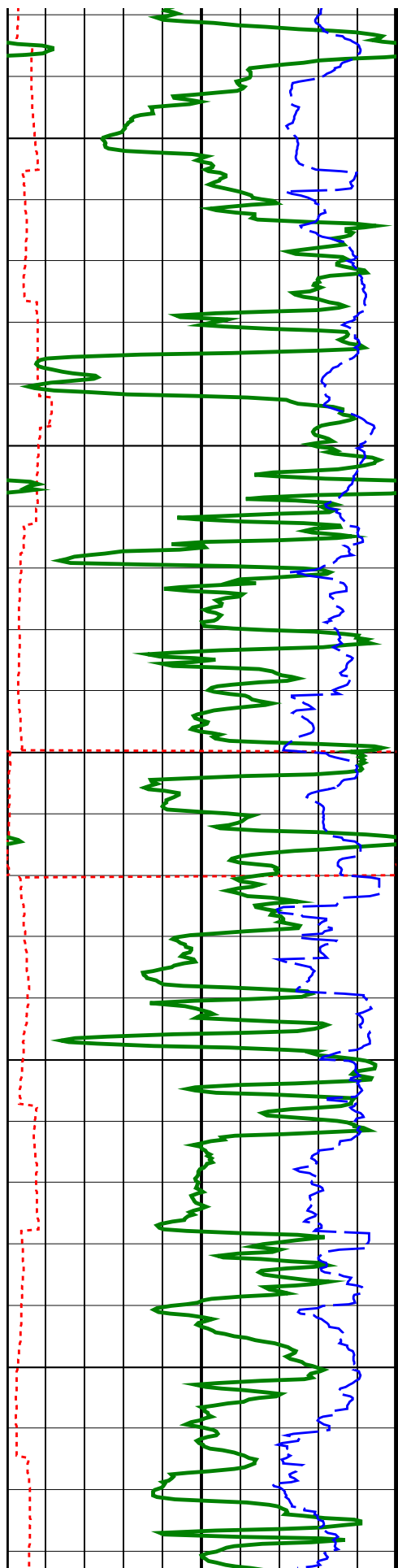


2500
TVD

2550
TVD

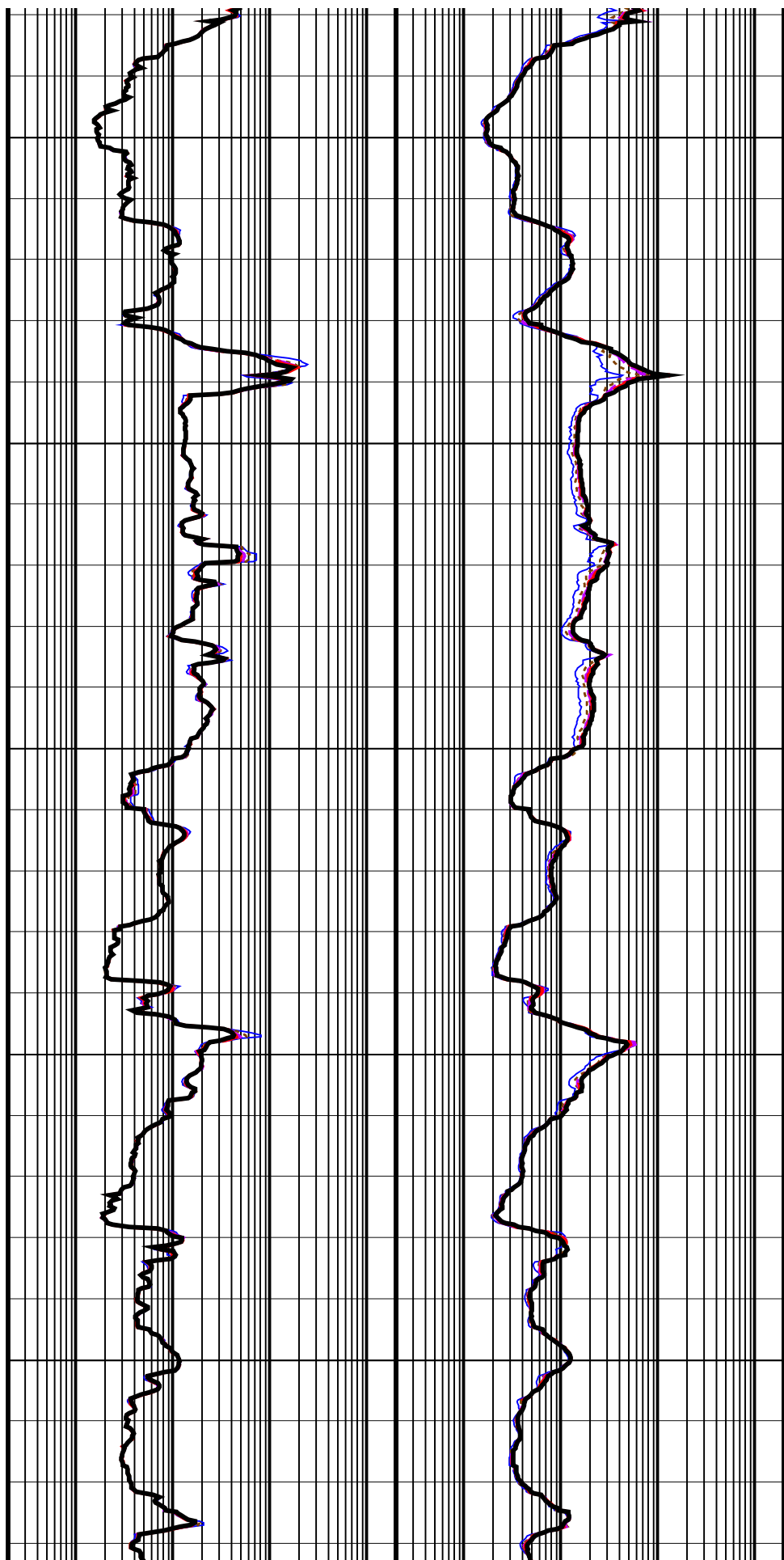
2600
TVD

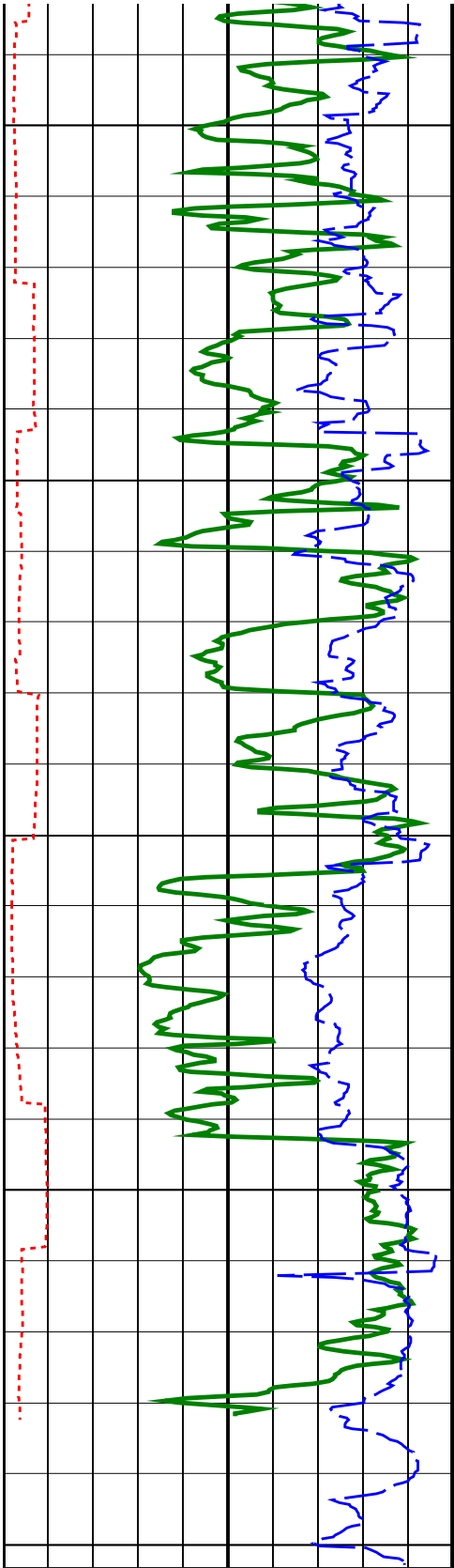




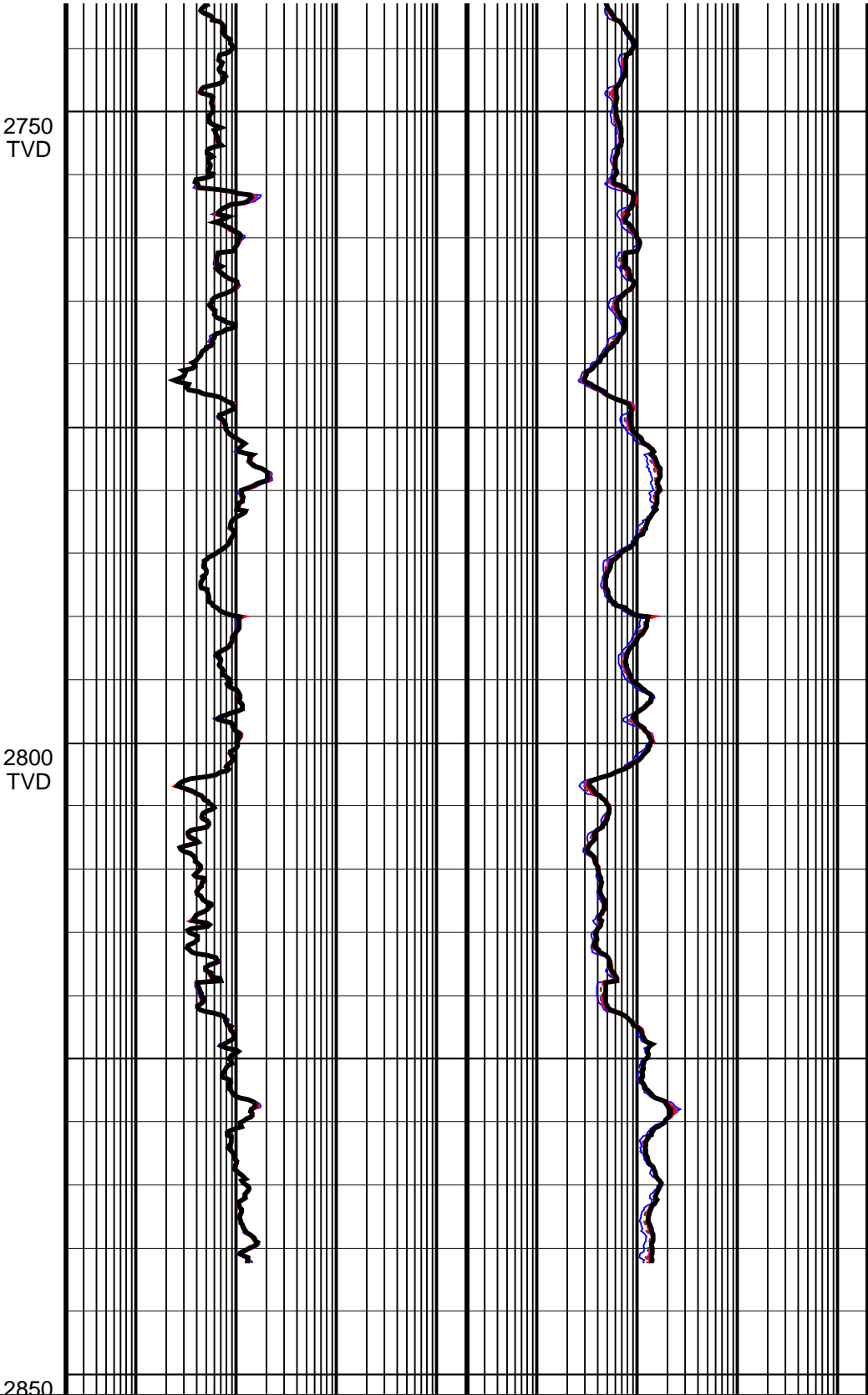
2650
TVD

2700
TVD





ARC Gamma Ray (GR_ARC)		
0	(GAPI)	200
ARC Resistivity Time After Bit (TAB_ARC_RES)		
0	(HR)	10
Rate of Penetration - Averaged over Last		



ARC Phase-Shift Resistivity 16-in. at 2 MHz (P16H)		ARC Attenuation Resistivity 16-in. at 2 MHz (A16H)	
0.2	(OHMM)	2000	2000
ARC Phase-Shift Resistivity 22-in. at 2 MHz (P22H)		ARC Attenuation Resistivity 22-in. at 2 MHz (A22H)	
0.2	(OHMM)	2000	2000
ARC Phase-Shift Resistivity 28-in. at 2 MHz (P28H)		ARC Attenuation Resistivity 28-in. at 2 MHz (A28H)	

Rate of Penetration, Averaged over Last 5ft (ROP5_RM)		
200	(M/HR)	0

ARC Phase-Shift Resistivity 20-in. at 2 MHz (P28H)			ARC Attenuation Resistivity 20-in. at 2 MHz (A28H)		
0.2	(OHMM)	2000	0.2	(OHMM)	2000
ARC Phase-Shift Resistivity 34-in. at 2 MHz (P34H)			ARC Attenuation Resistivity 34-in. at 2 MHz (A34H)		
0.2	(OHMM)	2000	0.2	(OHMM)	2000
ARC Phase-Shift Resistivity 40-in. at 2 MHz (P40H)			ARC Attenuation Resistivity 40-in. at 2 MHz (A40H)		
0.2	(OHMM)	2000	0.2	(OHMM)	2000

IDEAL Version: ID10_0C_04
IDF

6.75-in. Azimuthal Density Neutron / Equipment Identification

Primary Equipment:
Tool Name and Serial Number
Collar Type and Serial Number
Chassis Type and Serial Number
Stabilizer Type and Serial Number
Neutron Logging Source
Density Logging Source
Stabilizer Size
Calibration Status

ADN6 - CA 0403
ADDC - AA 0403
ADSE - EA 18
Clamp-On Stabiliser 699198
NSR - M 202
GSR - J/Z 1994
8.25 - in.
Valid

Master: 21-Jun-2005 11:22

6.75-in. Azimuthal Density Neutron Calibration

Density: Magnesium Block

Phase	LS window 3 - Mg CPS	Value	Phase	SS window 1 - Mg CPS	Value	Phase	SS window 3 - Mg CPS	Value
Master		1052	Master		2361	Master		6156
	250.0 (Minimum) 4125 (Nominal) 8000 (Maximum)			700.0 (Minimum) 9350 (Nominal) 18000 (Maximum)			2500 (Minimum) 23750 (Nominal) 45000 (Maximum)	

Master: 21-Jun-2005 11:22

6.75-in. Azimuthal Density Neutron Calibration

Density: Aluminum Block

Phase	LS window 3 - Al CPS	Value	Phase	SS window 1 - Al CPS	Value	Phase	SS window 3 - Al CPS	Value
Master		163.3	Master		1238	Master		3922
	50.00 (Minimum) 725.0 (Nominal) 1400 (Maximum)			500.0 (Minimum) 4250 (Nominal) 8000 (Maximum)			1500 (Minimum) 15750 (Nominal) 30000 (Maximum)	

Master: 21-Jun-2005 11:22

6.75-in. Azimuthal Density Neutron Calibration

Density: Background

Phase	LS window 3 - Background CPS	Value	Phase	SS window 1 - Background CPS	Value	Phase	SS window 3 - Background CPS	Value
Master		33.84	Master		106.5	Master		474.2
	15.00 (Minimum) 82.50 (Nominal) 150.0 (Maximum)			40.00 (Minimum) 220.0 (Nominal) 400.0 (Maximum)			150.0 (Minimum) 825.0 (Nominal) 1500 (Maximum)	

Master: 21-Jun-2005 11:22

6.75-in. Azimuthal Density Neutron Calibration

Density: Water Block Check

Phase	Long spacing water density G/C3	Value	Phase	Short spacing water density G/C3	Value
Master		1.030	Master		1.120
	1.024 (Minimum) 1.039 (Nominal) 1.054 (Maximum)			1.096 (Minimum) 1.126 (Nominal) 1.156 (Maximum)	

Master: 21-Jun-2005 11:22

6.75-in. Azimuthal Density Neutron Calibration

Neutron: 3-Point Calibration

Phase	Far 1 tube 1 Air Point Measure CPS	Value	Phase	Far 1 tube 1 Rod Point Measure CPS	Value	Phase	Far 1 tube 1 H2O Point Measure CPS	Value
-------	------------------------------------	-------	-------	------------------------------------	-------	-------	------------------------------------	-------

Master	<div><div></div></div>	17.01	Master	<div><div></div></div>	4.142	Master	<div><div></div></div>	2.060			
15.00 (Minimum)	19.05 (Nominal)	21.00 (Maximum)	4.000 (Minimum)	4.857 (Nominal)	5.500 (Maximum)	1.900 (Minimum)	2.363 (Nominal)	2.700 (Maximum)			
Phase	Far 1 tube 2 Air Point Measure	CPS	Value	Phase	Far 1 tube 2 Rod Point Measure	CPS	Value	Phase	Far 1 tube 2 H2O Point Measure	CPS	Value
Master	<div><div></div></div>	18.12	Master	<div><div></div></div>	4.335	Master	<div><div></div></div>	2.137			
16.00 (Minimum)	19.05 (Nominal)	22.00 (Maximum)	4.000 (Minimum)	4.857 (Nominal)	5.500 (Maximum)	1.900 (Minimum)	2.363 (Nominal)	2.800 (Maximum)			
Phase	Far 1 tube 3 Air Point Measure	CPS	Value	Phase	Far 1 tube 3 Rod Point Measure	CPS	Value	Phase	Far 1 tube 3 H2O Point Measure	CPS	Value
Master	<div><div></div></div>	17.15	Master	<div><div></div></div>	4.188	Master	<div><div></div></div>	2.066			
15.00 (Minimum)	19.05 (Nominal)	21.00 (Maximum)	4.000 (Minimum)	4.857 (Nominal)	5.500 (Maximum)	1.900 (Minimum)	2.363 (Nominal)	2.700 (Maximum)			
Phase	Far 2 tube 1 Air Point Measure	CPS	Value	Phase	Far 2 tube 1 Rod Point Measure	CPS	Value	Phase	Far 2 tube 1 H2O Point Measure	CPS	Value
Master	<div><div></div></div>	17.52	Master	<div><div></div></div>	4.365	Master	<div><div></div></div>	2.173			
15.00 (Minimum)	19.05 (Nominal)	21.00 (Maximum)	4.000 (Minimum)	4.857 (Nominal)	5.500 (Maximum)	1.900 (Minimum)	2.363 (Nominal)	2.700 (Maximum)			
Phase	Far 2 tube 2 Air Point Measure	CPS	Value	Phase	Far 2 tube 2 Rod Point Measure	CPS	Value	Phase	Far 2 tube 2 H2O Point Measure	CPS	Value
Master	<div><div></div></div>	18.07	Master	<div><div></div></div>	4.211	Master	<div><div></div></div>	1.982			
16.00 (Minimum)	19.05 (Nominal)	22.00 (Maximum)	4.000 (Minimum)	4.857 (Nominal)	5.500 (Maximum)	1.900 (Minimum)	2.363 (Nominal)	2.800 (Maximum)			
Phase	Far 2 tube 3 Air Point Measure	CPS	Value	Phase	Far 2 tube 3 Rod Point Measure	CPS	Value	Phase	Far 2 tube 3 H2O Point Measure	CPS	Value
Master	<div><div></div></div>	17.03	Master	<div><div></div></div>	4.348	Master	<div><div></div></div>	2.060			
15.00 (Minimum)	19.05 (Nominal)	21.00 (Maximum)	4.000 (Minimum)	4.857 (Nominal)	5.500 (Maximum)	1.900 (Minimum)	2.363 (Nominal)	2.700 (Maximum)			
Phase	Near 1 tube 1 Air Point Measure	CPS	Value	Phase	Near 1 tube 1 Rod Point Measure	CPS	Value	Phase	Near 1 tube 1 H2O Point Measure	CPS	Value
Master	<div><div></div></div>	458.8	Master	<div><div></div></div>	722.7	Master	<div><div></div></div>	319.9			
400.0 (Minimum)	487.5 (Nominal)	540.0 (Maximum)	610.0 (Minimum)	768.8 (Nominal)	850.0 (Maximum)	270.0 (Minimum)	343.7 (Nominal)	390.0 (Maximum)			
Phase	Near 2 tube 1 Air Point Measure	CPS	Value	Phase	Near 2 tube 1 Rod Point Measure	CPS	Value	Phase	Near 2 tube 1 H2O Point Measure	CPS	Value
Master	<div><div></div></div>	454.0	Master	<div><div></div></div>	727.3	Master	<div><div></div></div>	320.0			
400.0 (Minimum)	487.5 (Nominal)	540.0 (Maximum)	610.0 (Minimum)	768.8 (Nominal)	850.0 (Maximum)	270.0 (Minimum)	343.7 (Nominal)	390.0 (Maximum)			

Master: 21-Jun-2005 11:22											
6.75-in. Azimuthal Density Neutron Calibration											
Neutron: Water Block Check											
Phase	Far Neutron water porosity PU								Value		
Master									92.83		
	90.00 (Minimum)		100.0 (Nominal)				125.0 (Maximum)				

6.75-in. Array Resistivity Compensated / Equipment Identification

Primary Equipment:

Tool Name and Serial Number

ARC6 – BA

669

ARC675 Calibration Status

Valid

Master: 21-Jun-2005 17:38											
6.75-in. Array Resistivity Compensated Calibration											
Resistivity: Air											
Phase	Phase-Shift T1		Value	Phase	Phase-Shift T2		Value	Phase	Phase-Shift T3		Value
Master			1.268	Master			-1.170	Master			1.197

Phase	Phase-Shift T4	Value	Phase	Phase-Shift T5	Value	Phase	Phase-Shift T1 at 400KHz	Value
Master		-1.217	Master		1.178	Master		-0.01753
Phase	Phase-Shift T2 at 400KHz	Value	Phase	Phase-Shift T3 at 400KHz	Value	Phase	Phase-Shift T4 at 400KHz	Value
Master		-0.06656	Master		0.006531	Master		-0.06732
Phase	Phase-Shift T5 at 400KHz	Value						
Master		-0.002529						

Master: 21-Jun-2005 17:38								
6.75-in. Array Resistivity Compensated Calibration								
Resistivity: Air								
Phase	Attenuation T1	Value	Phase	Attenuation T2	Value	Phase	Attenuation T3	Value
Master		8.679	Master		6.273	Master		5.309
Phase	Attenuation T4	Value	Phase	Attenuation T5	Value	Phase	Attenuation T1 at 400KHz	Value
Master		4.192	Master		3.867	Master		8.755
Phase	Attenuation T2 at 400KHz	Value	Phase	Attenuation T3 at 400KHz	Value	Phase	Attenuation T4 at 400KHz	Value
Master		6.204	Master		5.371	Master		4.116
Phase	Attenuation T5 at 400KHz	Value						
Master		3.943						

Master: 21-Jun-2005 14:57								
6.75-in. Array Resistivity Compensated Calibration								
Gamma Ray: Blanket								
Phase	Gamma ray factor (equals Calibration Gain multiplied by API Gain Factor) CPS						Value	
Master							5.205	

SCHLUMBERGER

Survey report

21-Jul-2005 00:25:19

Page 1 of 7

Client..... ESSO Australia Pty. Ltd.
Field..... Bream B
Well..... BMB-B17
API number.....
Engineer..... J.Dolan, M.Y.Tan, D.Hastie
RIG:..... ENSCO 102
STATE:..... Victoria

Spud date..... 03-Jul-05
Last survey date..... 20-Jul-05
Total accepted surveys... 166
MD of first survey..... 176.60 m
MD of last survey..... 4955.00 m

----- Survey calculation methods-----
Method for positions..... Minimum curvature
Method for DLS..... Mason & Taylor
----- Depth reference -----
Permanent datum..... Mean Sea Level
Depth reference..... Driller's Depth

----- Geomagnetic data -----
Magnetic model..... BGM version 2004
Magnetic date..... 07-Jul-2005
Magnetic field strength... 1202.98 HCNT
Magnetic dec (+E/W-)..... 13.13 degrees
Magnetic dip..... -69.03 degrees

GL above permanent.....: -61.00 m
KB above permanent.....: Top Drive
DF above permanent.....: 47.17 m

----- Vertical section origin-----

Latitude (+N/S-).....: -8.30 m
Departure (+E/W-).....: 1.90 m

----- Platform reference point-----

Latitude (+N/S-).....:
Departure (+E/W-).....:

Azimuth from Vsect Origin to target: 262.95 degrees

----- MWD survey Reference Criteria -----

Reference G.....: 1000.05 mGal
Reference H.....: 1202.98 HCNT
Reference Dip.....: -69.03 degrees
Tolerance of G.....: (+/-) 2.50 mGal
Tolerance of H.....: (+/-) 6.00 HCNT
Tolerance of Dip.....: (+/-) 0.45 degrees

----- Corrections -----

Magnetic dec (+E/W-).....: 13.13 degrees
Grid convergence (+E/W-)..: -0.52 degrees
Total az corr (+E/W-).....: 13.65 degrees
(Total az corr = magnetic dec - grid conv)
Survey Correction Type
I=Sag Corrected Inclination
M=Schlumberger Magnetic Correction
S=Shell Magnetic Correction
F=Failed Axis Correction
R=Magnetic Resonance Tool Correction
D=Dmag Magnetic Correction

[(c)2005 IDEAL ID10_2B_08]

SCHLUMBERGER Survey Report

21-Jul-2005 00:25:19

Page 2 of 7

Seq #	Measured depth (m)	Incl angle (deg)	Azimuth angle (deg)	Course length (m)	TVD depth (m)	Vertical section (m)	Displ +N/S- (m)	Displ +E/W- (m)	Total displ (m)	At Azim (deg)	DLS (deg/100f)	Srvy tool type	Tool Corr (deg)
1	176.60	0.04	183.64	0.00	176.60	-0.02	-8.30	1.92	8.52	166.98	0.00	TIP	None
2	184.83	1.13	182.03	8.23	184.83	-0.01	-8.38	1.92	8.60	167.12	4.04	GYR	None
3	213.43	3.56	179.37	28.60	213.40	0.14	-9.55	1.92	9.74	168.66	2.59	GYR	None
4	223.59	3.72	184.92	10.16	223.54	0.24	-10.20	1.89	10.37	169.47	1.04	GYR	None
5	242.62	4.46	196.22	19.03	242.52	0.65	-11.52	1.64	11.64	171.88	1.80	GYR	None
6	271.64	8.75	218.77	29.02	271.35	2.68	-14.32	-0.05	14.32	180.21	5.18	GYR	None
7	300.55	10.26	241.47	28.91	299.87	6.65	-17.27	-3.69	17.66	192.07	4.23	GYR	None
8	329.43	14.91	265.50	28.88	328.07	12.76	-18.79	-9.66	21.12	207.21	7.28	GYR	None
9	358.38	18.09	268.20	28.95	355.83	20.96	-19.22	-17.87	26.24	222.91	3.45	GYR	None
10	376.71	19.26	267.42	18.33	373.19	26.80	-19.45	-23.73	30.68	230.67	1.99	MWD	None
11	405.38	22.00	267.42	28.67	400.02	36.87	-19.90	-33.82	39.24	239.53	2.91	MWD	None
12	434.55	26.55	267.16	29.17	426.60	48.83	-20.47	-45.80	50.16	245.92	4.76	MWD	None
13	463.47	30.39	267.57	28.92	452.02	62.57	-21.10	-59.57	63.19	250.49	4.05	MWD	None
14	492.68	34.12	269.90	29.21	476.72	78.07	-21.43	-75.15	78.14	254.08	4.10	MWD	None
15	521.56	37.60	271.58	28.88	500.12	94.83	-21.20	-92.06	94.47	257.03	3.82	MWD	None
16	550.51	41.70	271.67	28.95	522.41	113.09	-20.68	-110.52	112.44	259.40	4.32	MWD	None
17	579.54	44.80	271.95	29.03	543.55	132.74	-20.05	-130.40	131.93	261.26	3.26	MWD	None
18	608.87	48.46	271.91	29.33	563.69	153.80	-19.33	-151.70	152.93	262.74	3.80	MWD	None
19	638.03	52.67	271.80	29.16	582.21	176.04	-18.60	-174.21	175.20	263.90	4.40	MWD	None
20	667.20	55.95	271.13	29.17	599.22	199.47	-18.00	-197.89	198.71	264.80	3.47	MWD	None
21	695.98	60.12	271.59	28.78	614.46	223.62	-17.42	-222.29	222.97	265.52	4.44	MWD	None
22	725.38	64.35	273.81	29.40	628.15	249.25	-16.18	-248.27	248.80	266.27	4.83	MWD	None
23	754.29	64.78	274.68	28.91	640.57	274.85	-14.25	-274.31	274.68	267.03	0.94	MWD	None
24	783.25	65.32	275.18	28.96	652.78	300.53	-11.99	-300.47	300.70	267.71	0.74	MWD	None
25	818.77	67.01	273.50	35.52	667.14	332.38	-9.54	-332.86	333.00	268.36	1.96	MWD	None
26	854.11	67.18	274.13	35.34	680.89	364.35	-7.37	-365.34	365.42	268.84	0.52	MWD	None
27	883.53	67.37	274.24	29.42	692.26	390.97	-5.39	-392.41	392.44	269.21	0.22	MWD	None
28	912.19	67.47	274.39	28.66	703.26	416.91	-3.40	-418.79	418.81	269.53	0.18	MWD	None
29	941.56	67.64	274.39	29.37	714.47	443.52	-1.32	-445.86	445.86	269.83	0.18	MWD	None
30	970.95	67.57	274.58	29.39	725.67	470.14	0.80	-472.95	472.95	270.10	0.20	MWD	None

[(c)2005 IDEAL ID10_2B_08]

SCHLUMBERGER Survey Report

21-Jul-2005 00:25:19

Page 3 of 7

Seq #	Measured depth (m)	Incl angle (deg)	Azimuth angle (deg)	Course length (m)	TVD depth (m)	Vertical section (m)	Displ +N/S- (m)	Displ +E/W- (m)	Total displ (m)	At Azim (deg)	DLS (deg/100f)	Srvy tool type	Tool Corr (deg)
31	1000.05	67.26	274.68	29.10	736.85	496.45	2.97	-499.73	499.74	270.34	0.34	MWD	None
32	1029.41	66.85	275.24	29.36	748.29	522.90	5.31	-526.66	526.69	270.58	0.68	MWD	None
33	1057.37	66.83	275.77	27.96	759.29	547.99	7.77	-552.25	552.31	270.81	0.53	MWD	None
34	1087.17	65.53	276.46	29.80	771.33	574.53	10.68	-579.36	579.46	271.06	1.48	MWD	None
35	1115.97	65.95	276.52	28.80	783.16	600.06	13.65	-605.45	605.60	271.29	0.45	MWD	None
36	1144.88	66.14	276.01	28.91	794.90	625.77	16.53	-631.71	631.93	271.50	0.53	MWD	None
37	1173.62	66.62	273.57	28.74	806.41	651.54	18.73	-657.95	658.21	271.63	2.42	MWD	None
38	1202.81	66.84	271.28	29.19	817.95	677.99	19.86	-684.74	685.02	271.66	2.21	MWD	None
39	1231.62	66.76	271.15	28.81	829.30	704.19	20.42	-711.21	711.50	271.64	0.15	MWD	None
40	1260.58	66.85	271.17	28.96	840.70	730.54	20.96	-737.82	738.12	271.63	0.10	MWD	None
41	1289.26	66.39	271.05	28.68	852.08	756.60	21.47	-764.14	764.45	271.61	0.50	MWD	None
42	1318.24	66.25	271.26	28.98	863.72	782.87	22.01	-790.68	790.98	271.59	0.25	MWD	None
43	1347.08	66.51	270.71	28.84	875.28	809.03	22.46	-817.10	817.41	271.57	0.60	MWD	None
44	1376.15	67.18	270.40	29.07	886.71	835.52	22.72	-843.82	844.13	271.54	0.76	MWD	None
45	1405.05	67.15	270.07	28.90	897.92	861.94	22.83	-870.46	870.76	271.50	0.32	MWD	None
46	1434.14	67.43	269.66	29.09	909.15	888.58	22.76	-897.29	897.58	271.45	0.49	MWD	None
47	1462.93	67.01	268.80	28.79	920.30	914.97	22.41	-923.84	924.11	271.39	0.95	MWD	None
48	1492.22	67.44	268.83	29.29	931.64	941.83	21.85	-950.84	951.09	271.32	0.45	MWD	None
49	1521.04	67.82	268.79	28.82	942.61	968.34	21.30	-977.48	977.71	271.25	0.40	MWD	None

50	1549.99	67.58	268.90	28.95	953.59	994.99	20.76	-1004.26	1004.48	271.18	0.27	MWD	None
51	1579.01	68.11	269.05	29.02	964.54	1021.72	20.28	-1031.13	1031.33	271.13	0.58	MWD	None
52	1608.07	68.31	269.31	29.06	975.33	1048.54	19.89	-1058.11	1058.30	271.08	0.33	MWD	None
53	1636.95	68.63	269.58	28.88	985.92	1075.23	19.63	-1084.98	1085.16	271.04	0.43	MWD	None
54	1666.13	68.90	270.38	29.18	996.49	1102.23	19.62	-1112.18	1112.35	271.01	0.83	MWD	None
55	1695.25	68.90	271.14	29.12	1006.98	1129.14	19.98	-1139.34	1139.52	271.00	0.74	MWD	None
56	1724.30	69.09	271.81	29.05	1017.39	1155.96	20.68	-1166.45	1166.64	271.02	0.69	MWD	None
57	1753.32	69.21	272.75	29.02	1027.72	1182.72	21.76	-1193.55	1193.75	271.04	0.93	MWD	None
58	1782.48	69.09	272.97	29.15	1038.09	1209.56	23.12	-1220.76	1220.98	271.08	0.25	MWD	None
59	1811.46	69.33	273.59	28.99	1048.38	1236.22	24.67	-1247.81	1248.06	271.13	0.66	MWD	None
60	1840.15	69.21	274.40	28.69	1058.54	1262.56	26.54	-1274.58	1274.86	271.19	0.81	MWD	None

[(c)2005 IDEAL ID10_2B_08]
SCHLUMBERGER Survey Report

21-Jul-2005 00:25:19

Page 4 of 7

Seq #	Measured depth (m)	Incl angle (deg)	Azimuth angle (deg)	Course length (m)	TVD depth (m)	Vertical section (m)	Displ +N/S- (m)	Displ +E/W- (m)	Total displ (m)	At Azim (deg)	DLS (deg/ 100f)	Srvy tool type	Tool Corr (deg)
61	1869.23	69.00	274.33	29.08	1068.91	1289.19	28.60	-1301.67	1301.98	271.26	0.23	MWD	None
62	1897.95	68.96	274.92	28.72	1079.21	1315.44	30.77	-1328.39	1328.75	271.33	0.59	MWD	None
63	1926.96	68.73	275.07	29.01	1089.68	1341.90	33.12	-1355.34	1355.75	271.40	0.28	MWD	None
64	1956.12	68.62	275.18	29.16	1100.29	1368.45	35.55	-1382.40	1382.86	271.47	0.16	MWD	None
65	1985.11	68.49	275.64	28.99	1110.89	1394.80	38.09	-1409.26	1409.78	271.55	0.47	MWD	None
66	2013.72	68.42	275.77	28.61	1121.39	1420.75	40.74	-1435.74	1436.32	271.63	0.15	MWD	None
67	2043.27	68.42	276.11	29.55	1132.26	1447.53	43.58	-1463.07	1463.72	271.71	0.33	MWD	None
68	2072.90	68.54	276.03	29.63	1143.13	1474.37	46.50	-1490.48	1491.21	271.79	0.15	MWD	None
69	2101.21	68.59	276.22	28.31	1153.47	1500.03	49.31	-1516.68	1517.48	271.86	0.20	MWD	None
70	2130.32	68.73	276.28	29.11	1164.07	1526.42	52.26	-1543.64	1544.52	271.94	0.16	MWD	None
71	2159.55	68.71	275.76	29.23	1174.68	1552.95	55.12	-1570.72	1571.69	272.01	0.51	MWD	None
72	2187.89	68.23	275.09	28.34	1185.08	1578.69	57.61	-1596.97	1598.01	272.07	0.85	MWD	None
73	2217.05	67.62	273.94	29.16	1196.04	1605.16	59.74	-1623.91	1625.00	272.11	1.28	MWD	None
74	2246.05	67.18	272.93	29.00	1207.18	1631.49	61.34	-1650.63	1651.77	272.13	1.08	MWD	None
75	2275.35	67.02	272.33	29.30	1218.58	1658.09	62.58	-1677.59	1678.76	272.14	0.60	MWD	None
76	2303.96	66.99	272.08	28.61	1229.76	1684.09	63.59	-1703.91	1705.09	272.14	0.25	MWD	None
77	2333.53	66.77	271.98	29.57	1241.37	1710.94	64.56	-1731.09	1732.29	272.14	0.25	MWD	None
78	2362.66	66.57	271.60	29.13	1252.91	1737.37	65.39	-1757.82	1759.04	272.13	0.42	MWD	None
79	2391.16	66.42	271.10	28.50	1264.27	1763.23	66.01	-1783.95	1785.17	272.12	0.52	MWD	None
80	2420.52	66.29	270.97	29.36	1276.05	1789.86	66.49	-1810.84	1812.06	272.10	0.18	MWD	None
81	2449.48	66.28	270.92	28.96	1287.70	1816.11	66.93	-1837.35	1838.57	272.09	0.05	MWD	None
82	2478.43	65.90	271.06	28.95	1299.43	1842.32	67.39	-1863.81	1865.03	272.07	0.42	MWD	None
83	2507.38	65.86	271.31	28.95	1311.26	1868.47	67.93	-1890.23	1891.45	272.06	0.24	MWD	None
84	2536.36	65.70	271.62	28.98	1323.15	1894.60	68.61	-1916.65	1917.88	272.05	0.34	MWD	None
85	2565.38	65.56	271.63	29.02	1335.12	1920.74	69.36	-1943.07	1944.31	272.04	0.15	MWD	None
86	2594.40	65.45	271.70	29.02	1347.15	1946.84	70.13	-1969.47	1970.72	272.04	0.13	MWD	None
87	2623.43	65.17	271.70	29.03	1359.28	1972.91	70.91	-1995.83	1997.09	272.03	0.29	MWD	None
88	2652.00	64.93	271.51	28.57	1371.33	1998.52	71.63	-2021.73	2023.00	272.03	0.32	MWD	None
89	2681.57	64.64	272.01	29.57	1383.93	2024.95	72.46	-2048.47	2049.75	272.03	0.55	MWD	None
90	2710.44	64.64	271.97	28.87	1396.29	2050.72	73.36	-2074.54	2075.84	272.03	0.04	MWD	None

[(c)2005 IDEAL ID10_2B_08]
SCHLUMBERGER Survey Report

21-Jul-2005 00:25:19

Page 5 of 7

Seq #	Measured depth (m)	Incl angle (deg)	Azimuth angle (deg)	Course length (m)	TVD depth (m)	Vertical section (m)	Displ +N/S- (m)	Displ +E/W- (m)	Total displ (m)	At Azim (deg)	DLS (deg/ 100f)	Srvy tool type	Tool Corr (deg)
91	2739.43	65.30	272.01	28.99	1408.56	2076.66	74.27	-2100.79	2102.10	272.02	0.69	MWD	None
92	2768.43	65.78	271.99	29.00	1420.57	2102.73	75.20	-2127.17	2128.50	272.02	0.50	MWD	None
93	2797.42	66.38	272.44	28.99	1432.32	2128.88	76.22	-2153.65	2155.00	272.03	0.76	MWD	None
94	2826.48	66.53	272.48	29.06	1443.93	2155.16	77.36	-2180.27	2181.64	272.03	0.16	MWD	None
95	2855.34	66.71	272.69	28.86	1455.38	2181.27	78.56	-2206.73	2208.13	272.04	0.28	MWD	None
96	2884.25	67.03	272.95	28.91	1466.74	2207.47	79.87	-2233.29	2234.71	272.05	0.42	MWD	None
97	2913.38	67.05	273.01	29.13	1478.10	2233.88	81.26	-2260.07	2261.53	272.06	0.06	MWD	None
98	2942.34	67.73	273.21	28.96	1489.24	2260.19	82.71	-2286.77	2288.26	272.07	0.74	MWD	None
99	2971.33	68.13	273.23	28.99	1500.13	2286.63	84.22	-2313.59	2315.12	272.08	0.42	MWD	None
100	3000.41	68.89	273.44	29.08	1510.78	2313.24	85.79	-2340.60	2342.17	272.10	0.82	MWD	None
101	3029.44	69.28	273.36	29.03	1521.15	2339.91	87.40	-2367.67	2369.28	272.11	0.42	MWD	None
102	3058.81	69.90	273.38	29.37	1531.39	2366.98	89.02	-2395.15	2396.80	272.13	0.64	MWD	None
103	3088.07	69.80	273.29	29.26	1541.47	2394.00	90.62	-2422.57	2424.27	272.14	0.14	MWD	None
104	3116.50	69.65	273.74	28.43	1551.32	2420.22	92.25	-2449.19	2450.93	272.16	0.48	MWD	None
105	3145.03	69.35	274.06	28.53	1561.31	2446.45	94.07	-2475.85	2477.64	272.18	0.45	MWD	None
106	3174.90	69.05	274.28	29.87	1571.92	2473.84	96.10	-2503.70	2505.55	272.20	0.37	MWD	None
107	3203.62	69.10	274.16	28.72	1582.17	2500.15	98.08	-2530.45	2532.35	272.22	0.13	MWD	None
108	3231.95	69.12	273.82	28.33	1592.28	2526.13	99.92	-2556.86	2558.81	272.24	0.34	MWD	None
109	3261.85	69.20	274.34	29.90	1602.91	2553.55	101.91	-2584.73	2586.74	272.26	0.50	MWD	None
110	3290.76	69.38	274.16	28.91	1613.14	2580.07	103.91	-2611.70	2613.77	272.28	0.26	MWD	None
111	3320.19	68.08	272.09	29.43	1623.81	2607.06	105.41	-2639.08	2641.18	272.29	2.41	MWD	None
112	3348.99	66.80	269.60	28.80	1634.86	2633.40	105.80	-2665.67	2667.77	272.27	2.79	MWD	None
113	3378.00	65.47	267.82	29.01	1646.60	2659.79	105.21	-2692.19	2694.25	272.24	2.21	MWD	None
114	3406.72	64.01	265.64	28.72	1658.86	2685.71	103.73	-2718.12	2720.10	272.19	2.60	MWD	None

115	3436.65	62.50	263.31	29.93	1672.33	2712.42	101.16	-2744.72	2746.58	272.11	2.62	MWD	None
116	3465.56	61.00	260.46	28.91	1686.01	2737.88	97.57	-2769.93	2771.65	272.02	3.08	MWD	None
117	3493.87	59.97	257.54	28.31	1699.96	2762.45	92.87	-2794.11	2795.65	271.90	2.95	MWD	None
118	3522.76	58.80	254.12	28.89	1714.68	2787.12	86.79	-2818.21	2819.55	271.76	3.34	MWD	None
119	3551.72	57.78	250.60	28.96	1729.90	2811.33	79.33	-2841.68	2842.79	271.60	3.33	MWD	None
120	3580.80	56.75	246.98	29.08	1745.63	2835.04	70.49	-2864.48	2865.35	271.41	3.37	MWD	None

[(c)2005 IDEAL ID10_2B_08]
SCHLUMBERGER Survey Report

21-Jul-2005 00:25:19

Page 6 of 7

Seq #	Measured depth (m)	Incl angle (deg)	Azimuth angle (deg)	Course length (m)	TVD depth (m)	Vertical section (m)	Displ +N/S- (m)	Displ +E/W- (m)	Total displ (m)	At Azim (deg)	DLS (deg/100f)	Srvy tool type	Tool Corr (deg)
121	3609.60	55.55	243.69	28.80	1761.68	2857.84	60.51	-2886.22	2886.85	271.20	3.16	MWD	None
122	3638.76	54.93	240.03	29.16	1778.31	2880.18	49.22	-2907.34	2907.75	270.97	3.21	MWD	None
123	3667.68	54.16	235.71	28.92	1795.09	2901.51	36.70	-2927.28	2927.51	270.72	3.80	MWD	None
124	3696.68	53.30	231.28	29.00	1812.25	2921.86	22.80	-2946.07	2946.16	270.44	3.86	MWD	None
125	3725.76	53.25	227.13	29.08	1829.64	2941.24	7.58	-2963.71	2963.72	270.15	3.49	MWD	None
126	3754.65	53.96	223.06	28.89	1846.79	2959.59	-8.83	-2980.17	2980.18	269.83	3.54	MWD	None
127	3783.54	54.77	220.16	28.89	1863.62	2977.21	-26.39	-2995.76	2995.87	269.50	2.63	MWD	None
128	3812.61	56.01	216.05	29.07	1880.14	2994.17	-45.21	-3010.51	3010.85	269.14	3.78	MWD	None
129	3841.38	57.08	212.30	28.77	1896.00	3009.98	-65.07	-3023.99	3024.69	268.77	3.50	MWD	None
130	3870.13	58.41	211.89	28.75	1911.35	3025.32	-85.67	-3036.90	3038.11	268.38	1.46	MWD	None
131	3899.29	57.91	210.71	29.16	1926.73	3040.69	-106.83	-3049.77	3051.64	267.99	1.17	MWD	None
132	3928.90	57.02	210.67	29.61	1942.65	3055.97	-128.30	-3062.51	3065.20	267.60	0.92	MWD	None
133	4015.78	53.81	210.04	86.88	1991.96	3099.42	-190.01	-3098.66	3104.48	266.49	1.14	MWD	None
134	4044.33	51.58	209.51	28.55	2009.27	3113.03	-209.72	-3109.94	3117.00	266.14	2.42	MWD	None
135	4073.26	50.24	207.64	28.93	2027.51	3126.11	-229.43	-3120.68	3129.11	265.80	2.08	MWD	None
136	4102.29	46.16	206.56	29.03	2046.85	3138.27	-248.69	-3130.54	3140.41	265.46	4.37	MWD	None
137	4131.17	40.46	206.33	28.88	2067.86	3149.20	-266.42	-3139.37	3150.65	265.15	6.02	MWD	None
138	4159.95	38.23	206.44	28.78	2090.12	3159.25	-282.76	-3147.47	3160.15	264.87	2.36	MWD	None
139	4188.95	34.73	205.10	29.00	2113.43	3168.60	-298.28	-3154.98	3169.04	264.60	3.77	MWD	None
140	4217.63	33.53	204.72	28.68	2137.17	3177.12	-312.88	-3161.75	3177.20	264.35	1.30	MWD	None
141	4246.94	29.53	204.89	29.31	2162.15	3185.20	-326.79	-3168.18	3184.99	264.11	4.16	MWD	None
142	4275.84	25.05	205.43	28.90	2187.82	3192.26	-338.78	-3173.81	3191.84	263.91	4.73	MWD	None
143	4304.81	21.47	206.80	28.97	2214.44	3198.51	-349.05	-3178.83	3197.94	263.73	3.81	MWD	None
144	4333.81	16.56	208.03	29.00	2241.85	3203.84	-357.44	-3183.17	3203.18	263.59	5.18	MWD	None
145	4362.92	15.37	209.00	29.11	2269.83	3208.50	-364.48	-3186.99	3207.77	263.48	1.28	MWD	None
146	4391.85	14.29	210.79	28.93	2297.80	3212.94	-370.90	-3190.68	3212.16	263.37	1.24	MWD	None
147	4420.81	13.66	214.12	28.96	2325.90	3217.39	-376.80	-3194.43	3216.57	263.27	1.07	MWD	None
148	4450.08	13.49	215.04	29.27	2354.35	3221.95	-382.46	-3198.32	3221.11	263.18	0.29	MWD	None
149	4478.92	13.79	215.54	28.84	2382.38	3226.53	-388.01	-3202.25	3225.68	263.09	0.34	MWD	None
150	4507.60	13.77	217.99	28.68	2410.23	3231.26	-393.48	-3206.34	3230.40	263.00	0.62	MWD	None

[(c)2005 IDEAL ID10_2B_08]
SCHLUMBERGER Survey Report

21-Jul-2005 00:25:19

Page 7 of 7

Seq #	Measured depth (m)	Incl angle (deg)	Azimuth angle (deg)	Course length (m)	TVD depth (m)	Vertical section (m)	Displ +N/S- (m)	Displ +E/W- (m)	Total displ (m)	At Azim (deg)	DLS (deg/100f)	Srvy tool type	Tool Corr (deg)
151	4536.72	13.73	218.40	29.12	2438.52	3236.18	-398.92	-3210.62	3235.31	262.92	0.11	MWD	None
152	4565.55	13.24	221.77	28.82	2466.55	3241.10	-404.06	-3214.94	3240.24	262.84	0.98	MWD	None
153	4594.41	12.52	224.81	28.87	2494.69	3246.05	-408.75	-3219.35	3245.20	262.76	1.04	MWD	None
154	4623.34	11.59	227.49	28.93	2522.98	3250.88	-412.94	-3223.70	3250.04	262.70	1.14	MWD	None
155	4652.25	10.43	224.62	28.91	2551.36	3255.30	-416.76	-3227.68	3254.48	262.64	1.35	MWD	None
156	4681.21	9.15	221.43	28.96	2579.90	3259.08	-420.36	-3231.05	3258.28	262.59	1.46	MWD	None
157	4710.37	8.01	218.08	29.16	2608.73	3262.26	-423.69	-3233.84	3261.47	262.54	1.30	MWD	None
158	4739.18	7.04	216.13	28.81	2637.29	3264.89	-426.70	-3236.12	3264.13	262.49	1.06	MWD	None
159	4768.38	6.52	215.64	29.20	2666.29	3267.23	-429.49	-3238.14	3266.49	262.44	0.55	MWD	None
160	4797.13	5.98	217.69	28.75	2694.87	3269.40	-432.00	-3240.00	3268.68	262.41	0.62	MWD	None
161	4826.21	5.62	212.03	29.08	2723.80	3271.36	-434.41	-3241.68	3270.66	262.37	0.71	MWD	None
162	4855.07	5.36	211.06	28.86	2752.53	3273.08	-436.76	-3243.13	3272.41	262.33	0.29	MWD	None
163	4883.83	5.16	209.56	28.76	2781.16	3274.68	-439.04	-3244.46	3274.03	262.29	0.26	MWD	None
164	4913.00	5.07	210.11	29.17	2810.22	3276.24	-441.29	-3245.75	3275.62	262.26	0.11	MWD	None
165	4934.41	4.85	211.39	21.41	2831.55	3277.38	-442.88	-3246.70	3276.77	262.23	0.35	MWD	None
166	4955.00	4.80	211.50	20.59	2852.07	3278.46	-444.36	-3247.60	3277.86	262.21	0.08	Projection to TD	

[(c)2005 IDEAL ID10_2B_08]

Well:	BMB-B17	
Field:	Bream B	
Rig:	ENSCO 102	8.5 in. Section
State:	Victoria	

VISION Resistivity 2MHz
1:500 True Vertical Depth
Recorded Mode Log