

82 / 9 / 4 / 3 / 2

COAL: blk, bn blk-dsky bn, ea-sbvit, brit i/p, blk-ang, sbblky i/p, unevn, com pyr lam, wdy tex, slty i/p g/t CARB SLTST.

SANDSTONE: clr-trnsl, med-dom v crs, mod wl srt, sa-sr, wk pyr & sil cmt, tr pyr nod, hd agg, pr inf & vis por, tr pnpt mod bri yel min fluor.

Survey: 2717.26mMD (2159.3mTVD)  
43.06° inc 227.01° az

SILTSTONE: (1) pl yel bn, pl bn, v aren g/t vf SST, tr micmic, tr glauc, sft-mod hd, amor-sbblky.

SILTSTONE: (2) mod bn-gysh bn, occ blk bn, v carb g/t slty COAL, com pyr lam, frm-mod hd, sbblky-blky.

76 / 11 / 8 / 4 / 1

BIT #2 8 1/2"  
Reed Hycalog RSX163  
Jets: 2x18, 4x21  
In : 2751m  
Out : 3381m  
Run : 630m  
Hrs : 63.1  
Cond: 1-3-WT-T-X-I-PN-TD

SANDSTONE: clr-trnsl, crs-dom v crs, mod wl srt, sa-sr, wk pyr & sil cmt, rr pyr nod, hd, gen lse, pr inf & vis por, no fluor.

SILTSTONE: (1) pl yel bn, pl bn, v aren g/t vf SST, tr micmic, sft-frm, amor-sbblky.

SILTSTONE: (2) mod bn-gysh bn, occ blk bn, v carb g/t slty COAL, com glauc, frm-mod hd, sbblky-blky.

87 / 7 / 3 / 2 / 1

Survey: 2746.89mMD (2181.1mTVD)  
41.86° inc 228.13° az

COAL: blk, sbvit, brit, blk-ang, com pyr lam.

PULL OUT OF HOLE AT 2751 m

SANDSTONE: clr-trnsl, med-v crs, f-vf i/p occ g/t aren SLTST, mod srt, sa-sr, tr pyr cmt & nod, wk sil cmt, tr glauc, lse, mod hd, pr-fr vis & inf por, tr fluor.

M-5 Gas Sand  
2761.0mMDRT 2192.0mTVDRT  
(-2159.2mTVDSS)

84 / 8 / 5 / 2 / 1

FLUOR FROM MUD ADDITIVES  
RADIAGREEN & BARABLOK

SANDSTONE: clr-trnsl, dom vf-occ med, rr crs, mod wl srt, sa-dom sr, nil cmt, nil mt, rr pyr nod, cln, hd, lse, fr-gd inf & vis por, fluor.

Survey: 2775.31mMD (2203.0mTVD)  
37.5° inc 230.27° az

76 / 10 / 9 / 4 / 1

FLUOR: 2765-2802m: Tr-3%, dll-mod bri sptd, yel/grn fluor..mod rapid dir cut, v thn-mod thk ring res.

80 / 9 / 7 / 3 / 1

COAL: blk, brn/blk, ea, frm-blky unevn, wdy txt, tr pyr lam, slty g/t CARB SLTST.



WOB: 25-30  
TDRPM:75  
MMRPM:175  
SPP:2813  
FLW:598

MW:9.85  
FV:62  
PV:26  
YP:44  
Gel:12/17  
pH:9.0  
Cl:40.5K

10/05/05

WOB: 0-30  
TDRPM:110  
MMRPM:175  
SPP:2810  
FLW:608

(2214.7

2792

2796

2800

(2222.7

2804

2808

(2230.8

2812

2816

2820

(2238.8

2824

2828

(2246.9

2832

2836

2840

(2255

2844

2848

(2263.2

2852

2856

2860

(2271.3

2864

2868

(2279.4

2872

SANDSTONE:clr-trnsl,med-dom v crs  
mod wl srt,sa-sr,mod pyr cmt,com  
pyr nod,hd,lse,pr-fr inf & vis por,  
fluor a/a.

SILTSTONE:(1)pl yel brn,brn,v aren  
g/t vf SST,tr mic,rr glauc,sft-  
mod hd,amor-sbblky.  
SILTSTONE:(2)mnr dk yel/brn,  
gry/brn,v carb,g/t slty COAL,tr pyr  
lam,frm-mod hd,sbblky-blky.

M-6 Gas Sand  
2800.5mMDRT 2223.1mTVDRT  
(-2190.3mTVDSS)

79 / 9 / 7 / 4 / 1

Survey:2804.11mMD  
(2226.0mTVD)  
36.17°inc 231.41°az

84 / 8 / 5 / 2 / 1

SANDSTONE:clr-trnsl,vf-occ crs,dom  
f,mod wl srt,sa-dom sr,no mtx,no cmt  
com pyr nod,hd,lse,gd inf & vis por,  
fluor.

FLUOR:2802m-2816m,5%-tr,mod bri-  
bri,grn yel sptd-ptchy i/p,mod rap  
blmg dir cut w/ thk res ring to slw  
diff cut w/ tr res.

82 / 8 / 6 / 3 / 1

SANDSTONE:clr-trnsl,mlky wh,f-v  
crs,dom med grn,sr-ang,mod srt,  
tr pyr,tr cmt, hd,lse,fr inf por,  
no fluor.

Survey:2832.83mMD (2249.2mTVD)  
35.90°inc 232.07°az

SILTSTONE:dk brn/blk,g/t slty  
COAL,tr pyr,brit-mod hd,sbblky  
fiss.

70 / 11 / 11 / 6 / 2

SILTSTONE:(1)dom pl-dk brn,arg-  
aren,micmic,sheen i/p,com pyr,  
sft-hd,amor-sbblky.  
SILTSTONE:(2)mnr dk brn,blk,carb  
g/t slty COAL,com glauc,frm-mod  
hd,sbblku-blky.

FLUOR:2850m-2855m,tr-2% dll,grn/  
yel,ptchy fluor..v slw bldng dir cut,  
thn ring res.

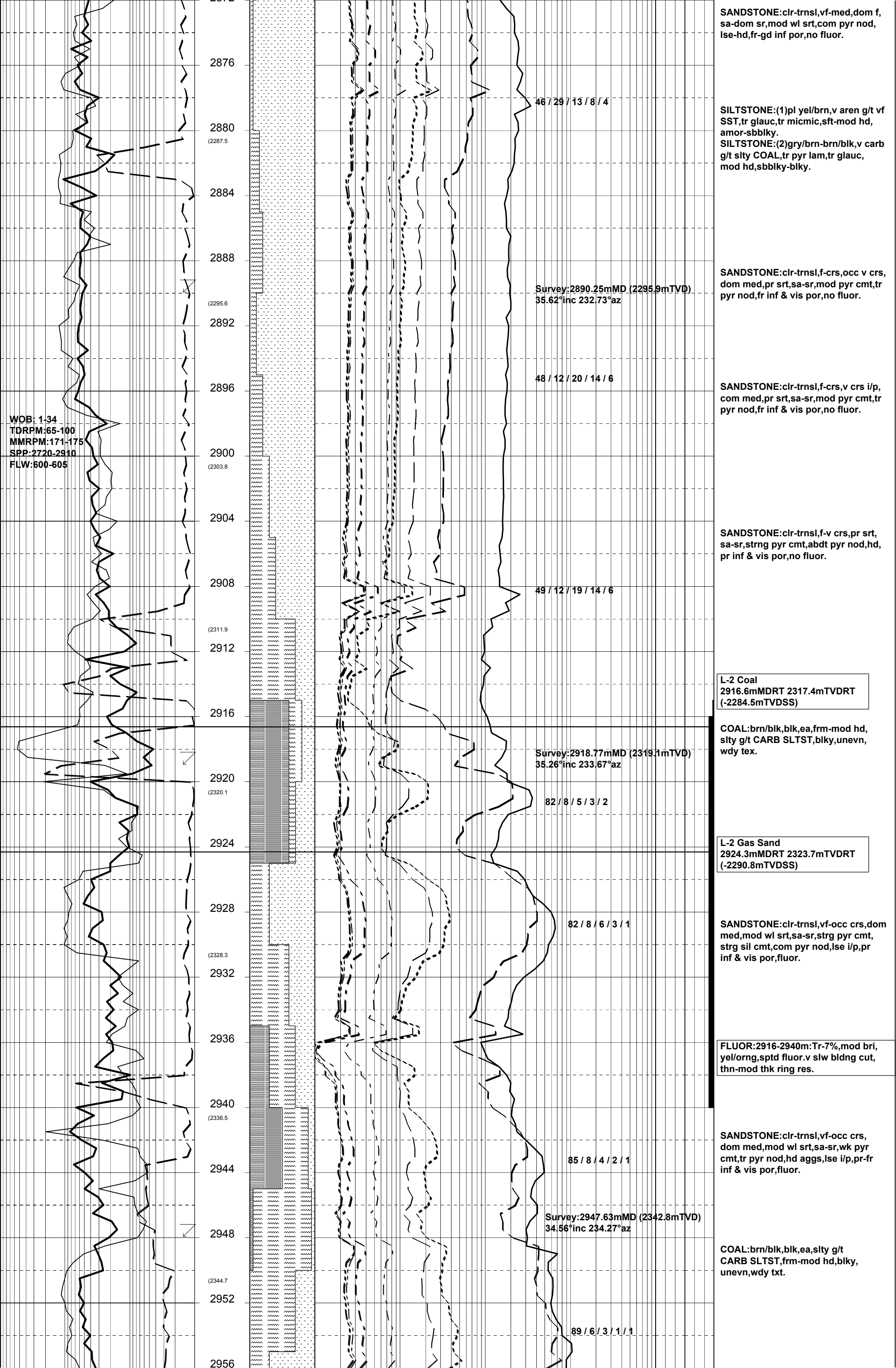
SANDSTONE:clr-trnsl, f-med,mnr crs  
sr-dom sa,mod srt,com pyr nod,tr pyr  
cmt,lse,hd,fr-gd inf por,tr fluor.

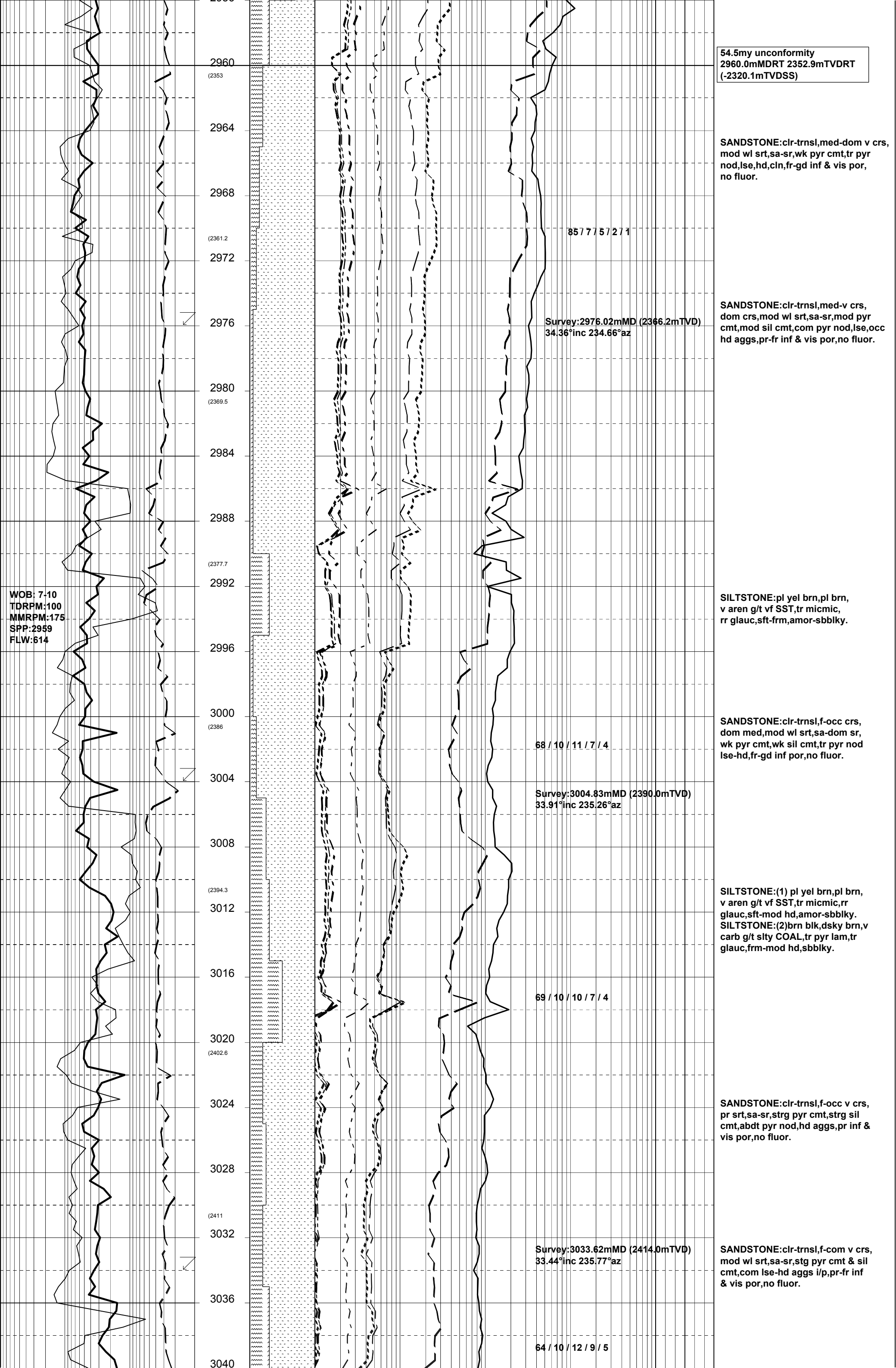
Survey:2861.57mMD (2272.5mTVD)  
35.65°inc 232.20°az

58 / 12 / 16 / 10 / 4

SANDSTONE:clr-trnsl,vf-med,dom f,  
mod wl srt,sr-sa,com nod pyr,tr pyr  
cmt,lse,hd,fr-gd inf & vis por,  
tr fluor.







54.5my unconformity  
2960.0mMDRT 2352.9mTVDRT  
(-2320.1mTVDSS)

SANDSTONE:clr-trnsl,med-dom v crs,  
mod wl srt,sa-sr,wk pyr cmt,tr pyr  
nod,lse,hd,cln,fr-gd inf & vis por,  
no fluor.

SANDSTONE:clr-trnsl,med-v crs,  
dom crs,mod wl srt,sa-sr,mod pyr  
cmt,mod sil cmt,com pyr nod,lse,occ  
hd aggs,pr-fr inf & vis por,no fluor.

SILTSTONE:pl yel brn,pl brn,  
v aren g/t vf SST,tr micmic,  
rr glauc,sft-frm,amor-sbblky.

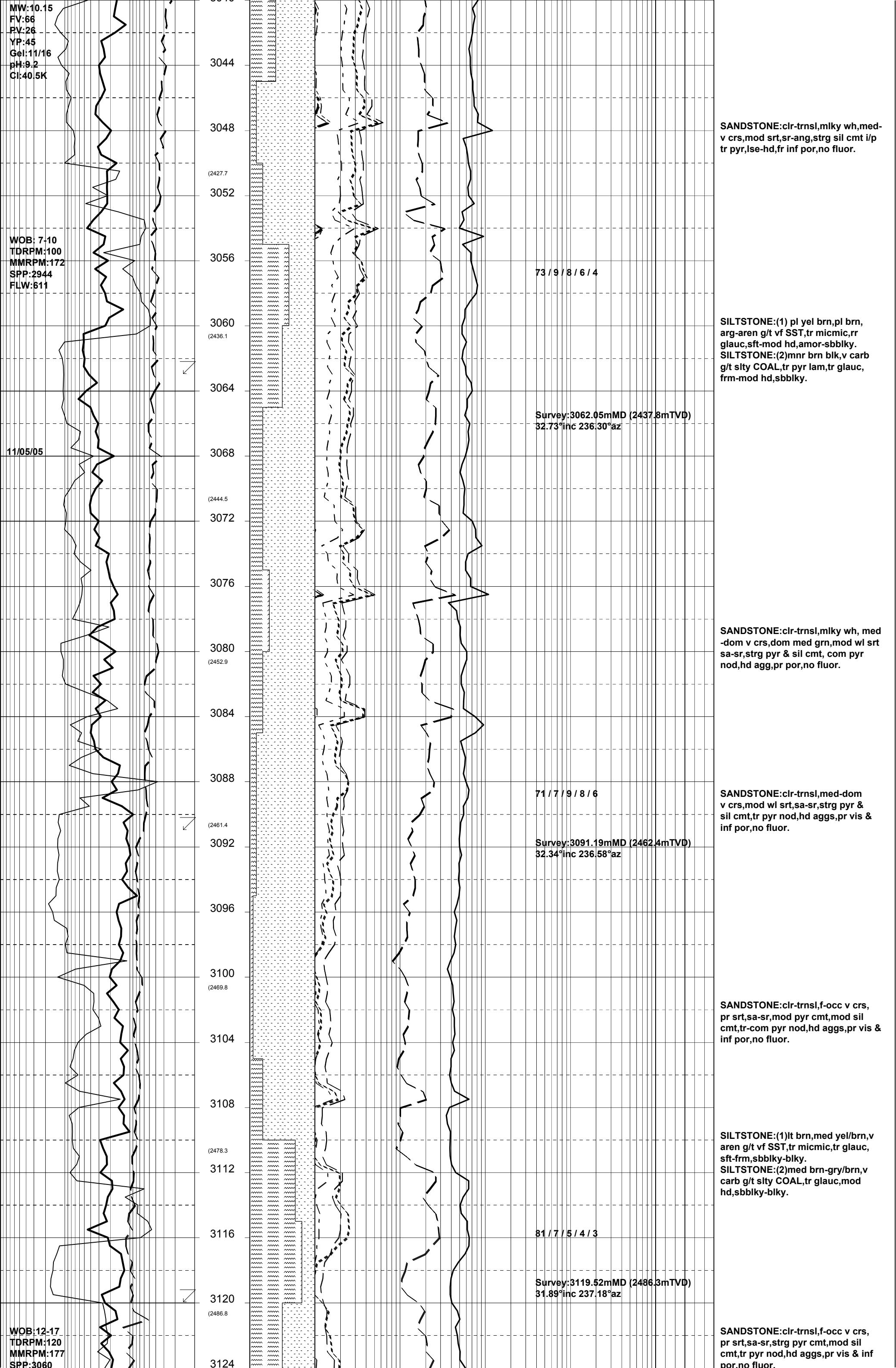
SANDSTONE:clr-trnsl,f-occ crs,  
dom med,mod wl srt,sa-dom sr,  
wk pyr cmt,wk sil cmt,tr pyr nod  
lse-hd,fr-gd inf por,no fluor.

SILTSTONE:(1) pl yel brn,pl brn,  
v aren g/t vf SST,tr micmic,rr  
glauc,sft-mod hd,amor-sbblky.  
SILTSTONE:(2)brn blk,dsly brn,v  
carb g/t slty COAL,tr pyr lam,tr  
glauc,frm-mod hd,sbblky.

SANDSTONE:clr-trnsl,f-occ v crs,  
pr srt,sa-sr,strg pyr cmt,strg sil  
cmt,abdt pyr nod,hd aggs,pr inf &  
vis por,no fluor.

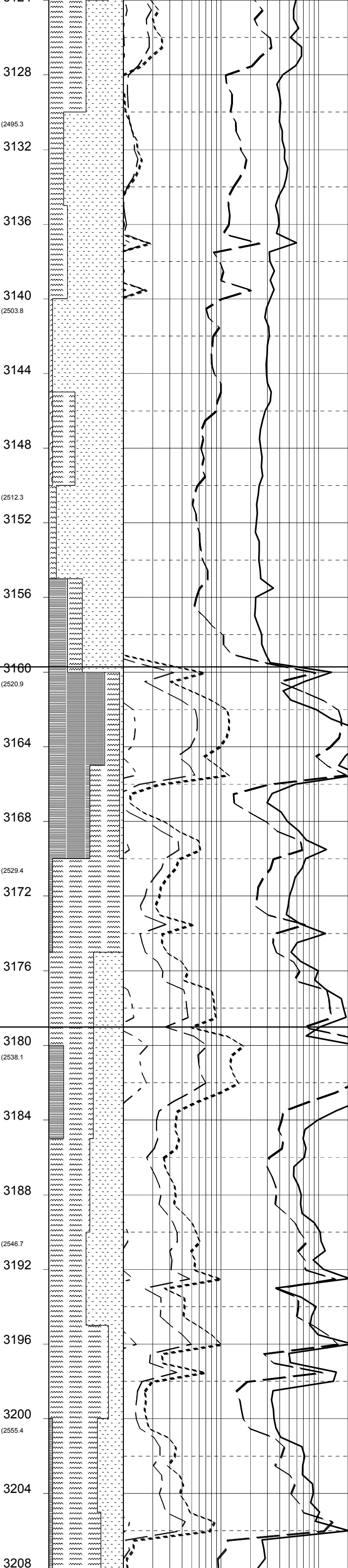
SANDSTONE:clr-trnsl,f-com v crs,  
mod wl srt,sa-sr,stg pyr cmt & sil  
cmt,com lse-hd aggs i/p,pr-fr inf  
& vis por,no fluor.

WOB: 7-10  
TDRPM:100  
MMRPM:175  
SPP:2959  
FLW:614



FLW:607

WOB:12-20  
TDRPM:120  
MMRPM:177  
SPP:3070  
FLW:605



SANDSTONE:clr-trnsl,f-com crs,pr srt,sa-sr,mod pyr cmt,mod sil cmt, tr pyr nod,hd aggs,occ lse,pr inf & vis por,no fluor.

SILTSTONE:dk yel/brn-gry/brn, v aren g/t vf SST,tr glauc,tr micmic, sft-frm,sbblky-blky.

CLAYSTONE:lt blu/gry-pl blu,tr glauc,hd,blky.

SANDSTONE:clr-trnsl,f-occ v crs, pr srt,sa-sr,mod pyr cmt,mod sil cmt,rr nod pyr,hd aggs,pr inf por, no fluor.

L-9 Coal  
3159.7mMDRT 2520.6mTVDRT  
(-2487.8mTVDSS)

COAL:dsly brn-brn/blk,slty g/t CARB SLTST,ea,frm,blky,unevn,wdy tex.

SILTSTONE:(1)lt brn,med yel/brn,v aren g/t vf SST,tr micmic,tr glauc, sft-frm,sbblky-blky.  
SILTSTONE:(2)med brn-gry/brn,v carb,g/t slty COAL,tr glauc,mod hd,sbblky-blky.

SANDSTONE:clr-trnsl,mlky,med-dom v crs,mod wl srt,sa-sr,mod pyr cmt mod sil cmt,tr pyr nod,hd aggs(com rock flour),pr vis-inf por,no fluor.

L-9 Gas Sand  
3179.0mMDRT 2537.1mTVDRT  
(-2504.3mTVDSS)

SANDSTONE:clr-trnsl,dom f-occ crs, pr srt,sa-sr,mod pyr cmt,mod sil cmt,tr nod pyr,hd aggs,occ lse,pr-fr inf-vis por,tr fluor.

FLUOR:3180-3190m, 3200-3205m:  
2%-tr,dll-tr bri sptd yel grn fluor.  
slw strmg dir cut,v thn res ring.

COAL:dsly brn-brn/blk,slty g/t CARB SLTST,ea,frm,blky,unevn,wdy txt.

SANDSTONE:clr-trnsl,vf-med,occ crs,pr srt,sa-sr,mod pyr cmt,mod sil cmt,tr-com pyr nod,hd aggs, com rock flour,pr inf & vis por, no fluor.

