

Rig: 175

Field: West Kingfish

Location: Bass Strait

Well: WKF W12A

Company: Esso Australia Pty Ltd

Schlumberger

Company: Esso Australia Pty Ltd

Well: WKF W12A

Field: West Kingfish

Rig: 175

Country: Australia

LOCATION		Junk Basket with 6" Gauge Ring	
		Max-R Setting Record	
		Perforation Record 26-Nov-2009	
		Bass Strait Gippsland	Elev.: K.B. 41.73 m G.L. -77.00 m D.F. 41.73 m
		Permanent Datum: MSL Log Measured From: Drill Floor Drilling Measured From: Drill Floor	Elev.: 0.00 m 41.73 m above Perm. Datum
		State: Victoria	Max. Well Deviation 11 deg Longitude 148°6'19.67638"E Latitude 38° 35' 34.70389" S
Logging Date		26-Nov-2009	
Run Number		1&2	
Depth Driller		2430 m	
Schlumberger Depth		2408.5 m	
Bottom Log Interval		2320.6 m	
Top Log Interval		2319.5 m	
Casing Fluid Type		Brine	
Salinity			
Density		8.55 g/cm3	
Fluid Level		0 m	
BIT/CASING/TUBING STRING			
Bit Size		8.000 in	
From		626.5 m	
To		2430 m	
Casing/Tubing Size		7.000 in	
Weight		26 lbm/ft	
Grade		L-80	
From		19.5011 m	
To		2430 m	
Maximum Recorded Temperatures			
Logger On Bottom	Time	26-Nov-2009	13:00
Unit Number	Location	3829	AUSL
Recorded By		M. Pratt, B. Donahoe	
Witnessed By		D Daniels , A Choy	

		Run 1	
PVT DATA	Oil Density		
	Water Salinity		
	Gas Gravity		
	Bo		
	Bw		
	1/Bg		
	Bubble Point Pressure		
	Bubble Point Temperature		
	Solution GOR		
	Maximum Deviation		11 deg
CEMENTING DATA			
Primary/Squeeze		Primary	
Casing String No			
Lead Cement Type			
Volume			
Density			
Water Loss			
Additives			
Tail Cement Type			
Volume			
Density			
Water Loss			
Additives			
Expected Cement Top			
Logging Date			
Run Number			
Depth Driller			
Schlumberger Depth			
Bottom Log Interval			
Top Log Interval			
Casing Fluid Type			
Salinity			
Density			
Fluid Level			
BIT/CASING/TUBING STRING			
Bit Size			
From			
To			
Casing/Tubing Size			
Weight			
Grade			
From			
To			
Maximum Recorded Temperatures			
Logger On Bottom		Time	
Unit Number		Location	
Recorded By			
Witnessed By			

## DEPTH SUMMARY LISTING

Date Created: 27-NOV-2009 8:01:43

### Depth System Equipment

Depth Measuring Device		Tension Device		Logging Cable		
Type:	IDW-E	Type:	CMTD-B/A	Type:	7-42ZV XS	
Serial Number:	727	Serial Number:	1173	Serial Number:	708145	
Calibration Date:	9-Sep-2009	Calibration Date:	14-Nov-2009	Length:	6656 M	
Calibrator Serial Number:	30	Calibrator Serial Number:	300286	Conveyance Method:	Wireline	
Calibration Cable Type:	7-42ZV XS	Number of Calibration Points:	10		Rig Type:	Offshore Fixed
Wheel Correction 1:	-4	Calibration RMS:	30			
Wheel Correction 2:	-1	Calibration Peak Error:	41			

### Depth Control Parameters

Log Sequence:	First Log In the Well
Rig Up Length At Surface:	0.00 M
Rig Up Length At Bottom:	0.00 M
Rig Up Length Correction:	0.00 M
Stretch Correction:	
Tool Zero Check At Surface:	

### Depth Control Remarks

1. IDW used as primary depth control
2. First log in well schlumberger depth control procedures applied
3. All log zeroed at drill floor
4. Log correlated to Schlumberger MWD lod provided by the client
5.
6.

#### DISCLAIMER

THE USE OF AND RELIANCE UPON THIS RECORDED-DATA BY THE HEREIN NAMED COMPANY (AND ANY OF ITS AFFILIATES, PARTNERS, REPRESENTATIVES, AGENTS, CONSULTANTS AND EMPLOYEES) IS SUBJECT TO THE TERMS AND CONDITIONS AGREED UPON BETWEEN SCHLUMBERGER AND THE COMPANY, INCLUDING: (a) RESTRICTIONS ON USE OF THE RECORDED-DATA; (b) DISCLAIMERS AND WAIVERS OF WARRANTIES AND REPRESENTATIONS REGARDING COMPANY'S USE OF AND RELIANCE UPON THE RECORDED-DATA; AND (c) CUSTOMER'S FULL AND SOLE RESPONSIBILITY FOR ANY INFERENCE DRAWN OR DECISION MADE IN CONNECTION WITH THE USE OF THIS RECORDED-DATA.

OTHER SERVICES1		OTHER SERVICES2	
OS1:	None	OS1:	
OS2:		OS2:	
OS3:		OS3:	
OS4:		OS4:	
OS5:		OS5:	
REMARKS: RUN NUMBER 1		REMARKS: RUN NUMBER 2	
Log correlated to Schlumberger LWD log provided by client			
Objective: RIH with Junk Basket & 6" Guage ring to HUD, ensure access forMaxRrun			
Set MaxR to perforate Interval 2319.5m – 2320.6m with 4–1/2			
"HSD 12spf, 135/45 deg phased perforating gun using 4512 Powerjet Omega charges.			
CPST Secure initiated			
HUD tagged @ 2408.5m MDKB with Junk Basket			

RUN 2		
SERVICE ORDER #:		
PROGRAM VERSION:		
FLUID LEVEL:		
LOGGED INTERVAL	START	STOP

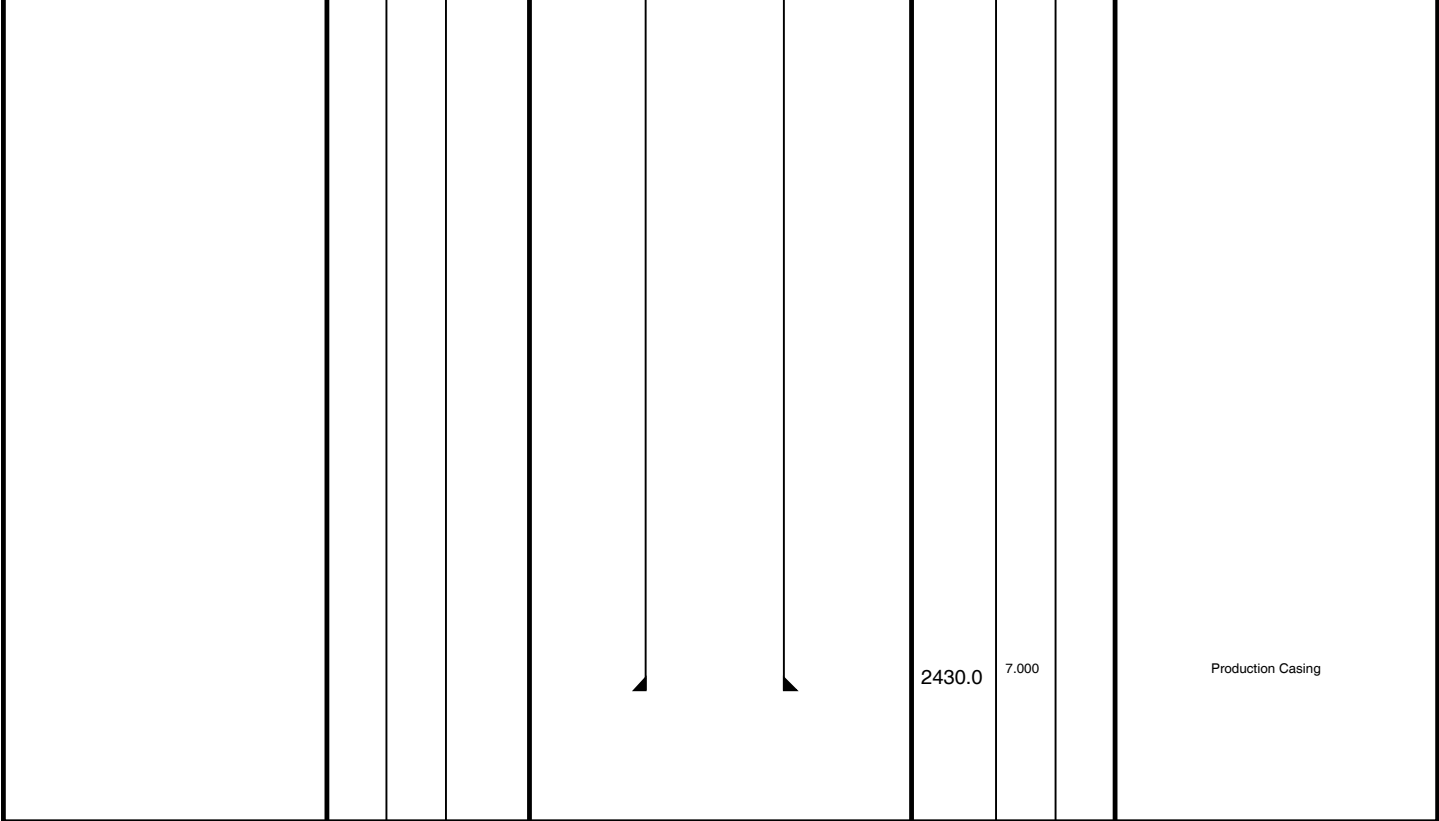
RUN 2	
WITM (SHM)	SURFACE EQUIPMENT

Tool Joint	Tool Joint Size	Tool Joint Type	Tool Joint Length (ft)	Tool Joint Weight (lb)
PEH-A	3-3/8"	PEH-A	18.20	
PEH-A	3-3/8"	PEH-A	17.65	
PGGT-D	3-3/8"	PGGT-D	17.24	
PGGC	3-3/8"	PGGC	1.07	
PGGH-D	3-3/8"	PGGH-D	TOOL ZERO	
AH-283	3-3/8"	AH-283	15.46	
AH-CPST-AA	3-5/8"	AH-CPST-AA	15.30	
AH-CPST-AA	3-5/8"	AH-CPST-AA		
AH-MaxR Setting Sleeve	5-1/2"	AH-MaxR Setting Sleeve	13.01	
AH-MaxR Setting Sleeve	5-1/2"	AH-MaxR Setting Sleeve		
AH-7.0" MaxR	5-3/4"	AH-7.0" MaxR	12.39	
AH-7.0" MaxR	5-3/4"	AH-7.0" MaxR		
AH-Gun Redundant Fill Sub	3-3/8"	AH-Gun Redundant Fill Sub	9.64	
AH-Gun Redundant Fill Sub	3-3/8"	AH-Gun Redundant Fill Sub		

Tool	Length (m)	Tool ID	Length (m)
SHM_GUN	0.00	SHM_GUN	0.00
AH-6" Gauge Ring	0.04	BNS-Roller Bottom Nose 4-3/4"	1.64
AH-Junk Basket 5-1/2" OD	1.56	AH-4.5" 4512 PJ Omega 1 SPF HMX	3.64
AH-283 3-3/8" 5002	1.72	AH-Safety Spacer 4-1/2"	6.64
AH-283 3-3/8"	1.72		

MAXIMUM STRING DIAMETER 6.00 IN  
MEASUREMENTS RELATIVE TO TOOL ZERO  
ALL LENGTHS IN METERS

MAXIMUM STRING DIAMETER 5.75 IN  
MEASUREMENTS RELATIVE TO TOOL ZERO  
ALL LENGTHS IN METERS



Job Events Summary

MAXIS Field Log

Schlumberger Job Event Summary						
Time		Elapsed Time	Depth (M)		File	
Log Pass (up)	26-Nov-2009 23:20	000:09	2411.3	- 2274.3	PERFO_020LUP	
Log Pass (up)	27-Nov-2009 13:28	000:04	2350.3	- 2311.8	PERFO_039LUP	
Log Pass (up)	27-Nov-2009 13:34	000:13	2349.9	- 2236.0	PERFO_040LUP	

Company: Esso Australia Pty Ltd

Well: WKF W12A

Output DLIS Files

DEFAULT      PERFO\_040LUP      FN:39      PRODUCER      27-Nov-2009 13:34

OP System Version: 17C0-154

SHM\_GUN      17C0-154      PGGT-D      17C0-154

PIP SUMMARY

Time Mark Every 60 S

Casing Collar Locator (CCL)

-19      (----)      1

Gamma Ray (GR)

(GAPI)      150

Tension (TENS)

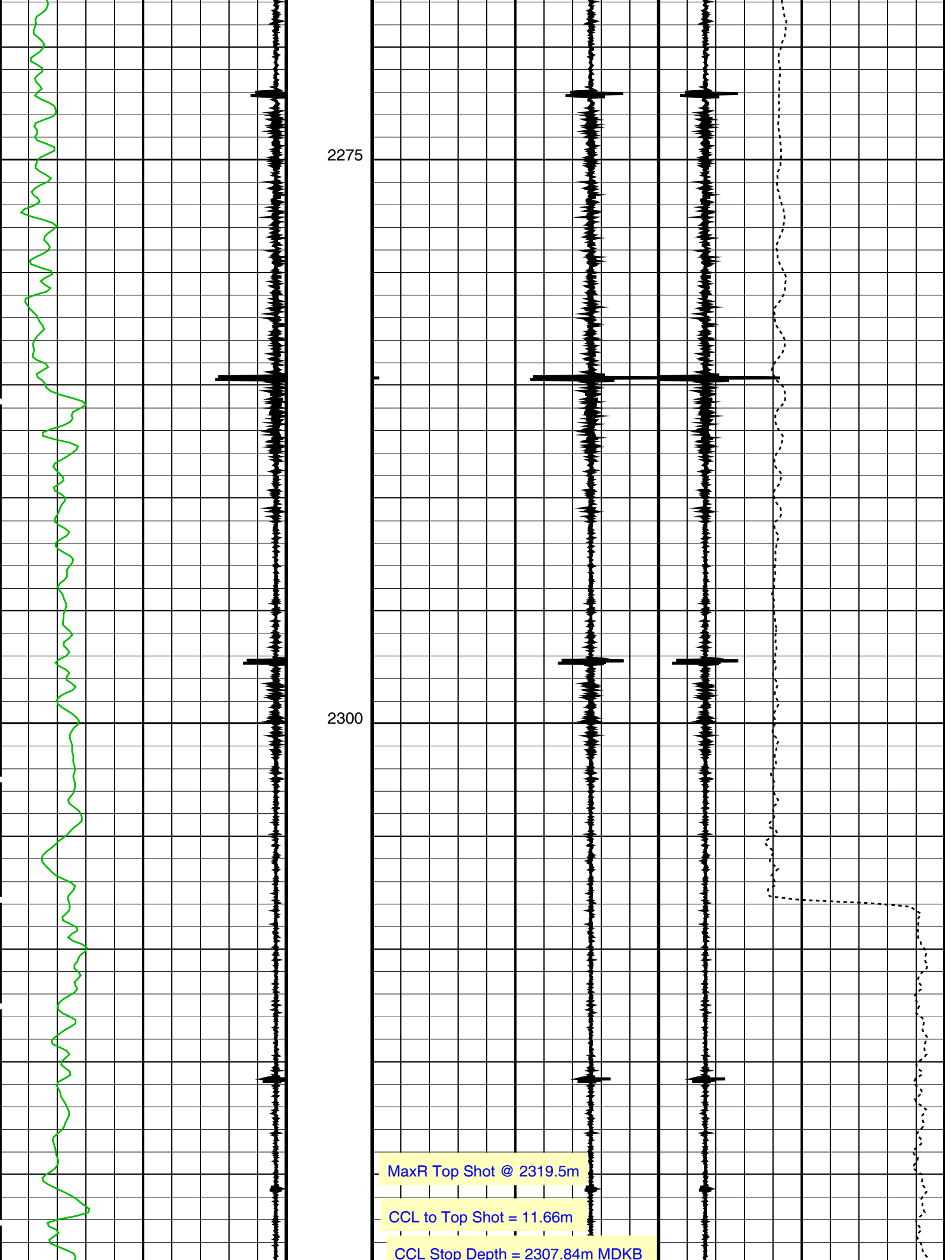
2000      (LBF)      4000

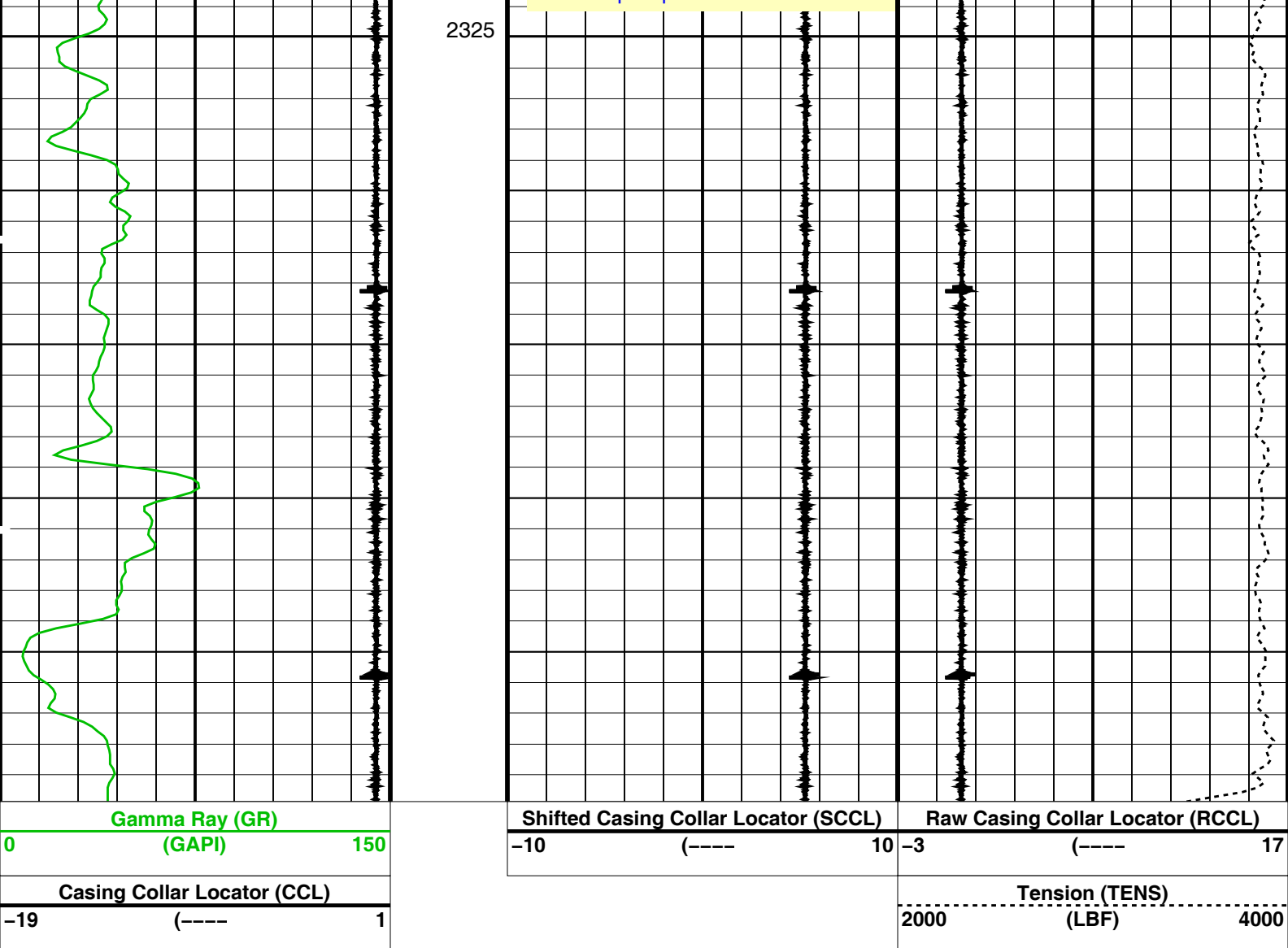
Shifted Casing Collar Locator (SCCL)

Raw Casing Collar Locator (RCCL)

-10      (----)      10      -3      (----)      17

2250





PIP SUMMARY

Time Mark Every 60 S

Format: PERFO Vertical Scale: 1:200

Graphics File Created: 27-Nov-2009 13:34

OP System Version: 17C0-154

SHM\_GUN

17C0-154

PGGT-D

17C0-154

Output DLIS Files

DEFAULT

PERFO\_040LUP

FN:39

PRODUCER

27-Nov-2009 13:34

Schlumberger

Max-R Correlation Pass

MAXIS Field Log



OP System Version: 17C0-154

SHM\_GUN

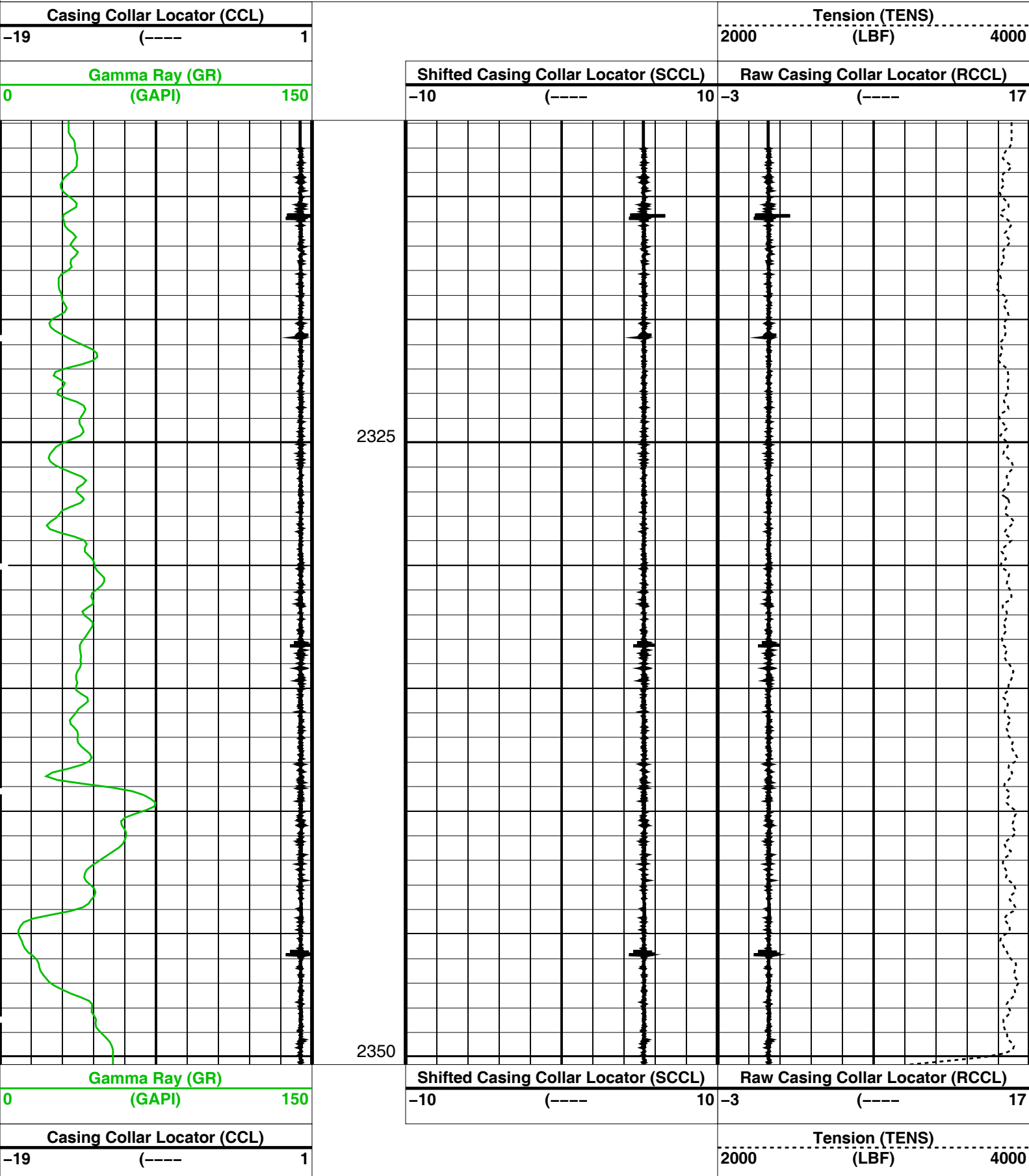
17C0-154

PGGT-D

17C0-154

PIP SUMMARY

 Time Mark Every 60 S



# PIP SUMMARY

Time Mark Every 60 S

Format: PERFO Vertical Scale: 1:200

Graphics File Created: 27-Nov-2009 13:28

## OP System Version: 17C0-154

SHM\_GUN 17C0-154 PGGT-D 17C0-154

## Output DLIS Files

DEFAULT PERFO\_039LUP FN:38 PRODUCER 27-Nov-2009 13:28

**Schlumberger**

6" Junk Basket Pass

MAXIS Field Log

Company: Esso Australia Pty Ltd

Well: WKF W12A

## Input DLIS Files

DEFAULT PERFO\_020LUP FN:19 PRODUCER 26-Nov-2009 23:20 2411.3 M 2274.3 M

## Output DLIS Files

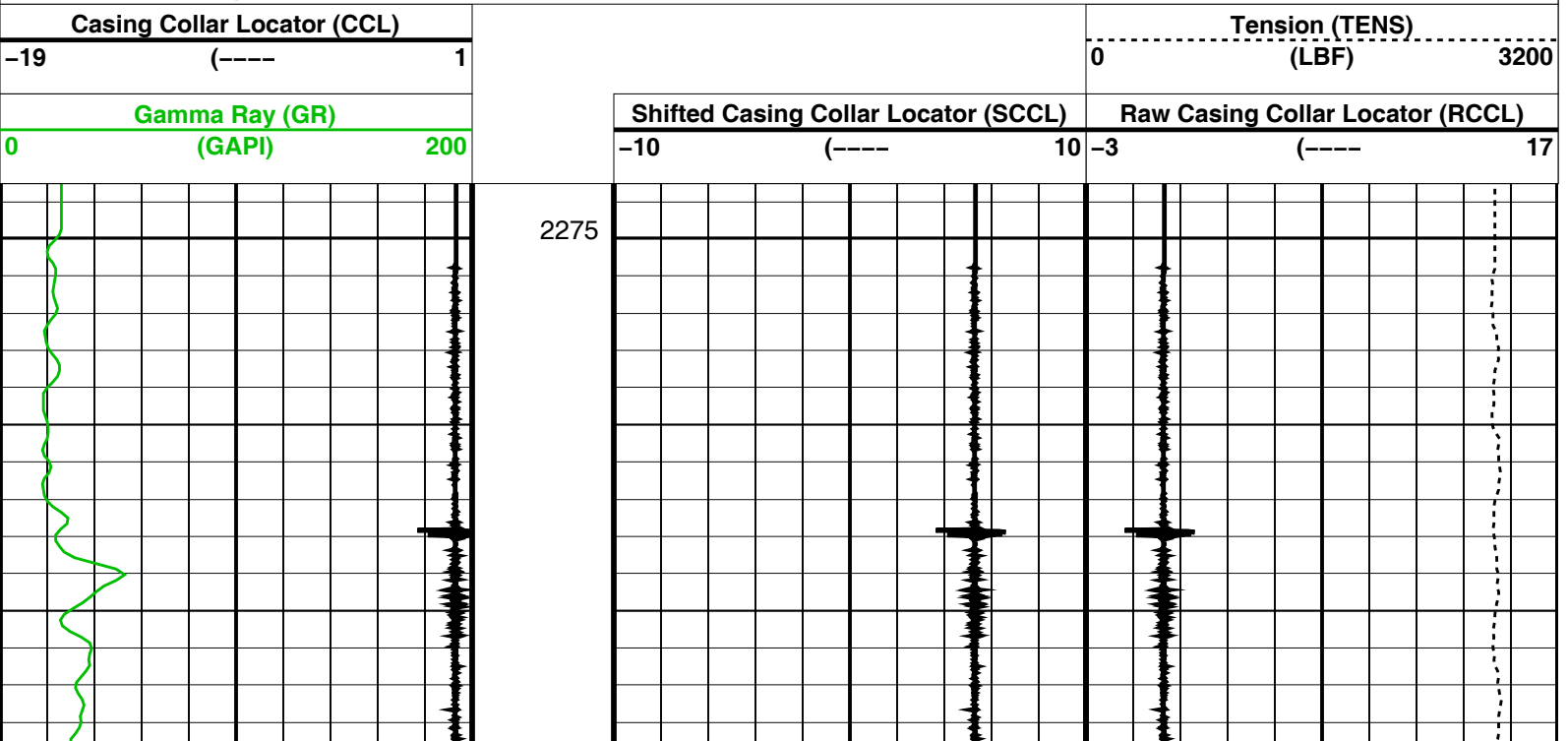
DEFAULT PERFO\_022PUP FN:21 PRODUCER 26-Nov-2009 23:36 2411.6 M 2273.4 M

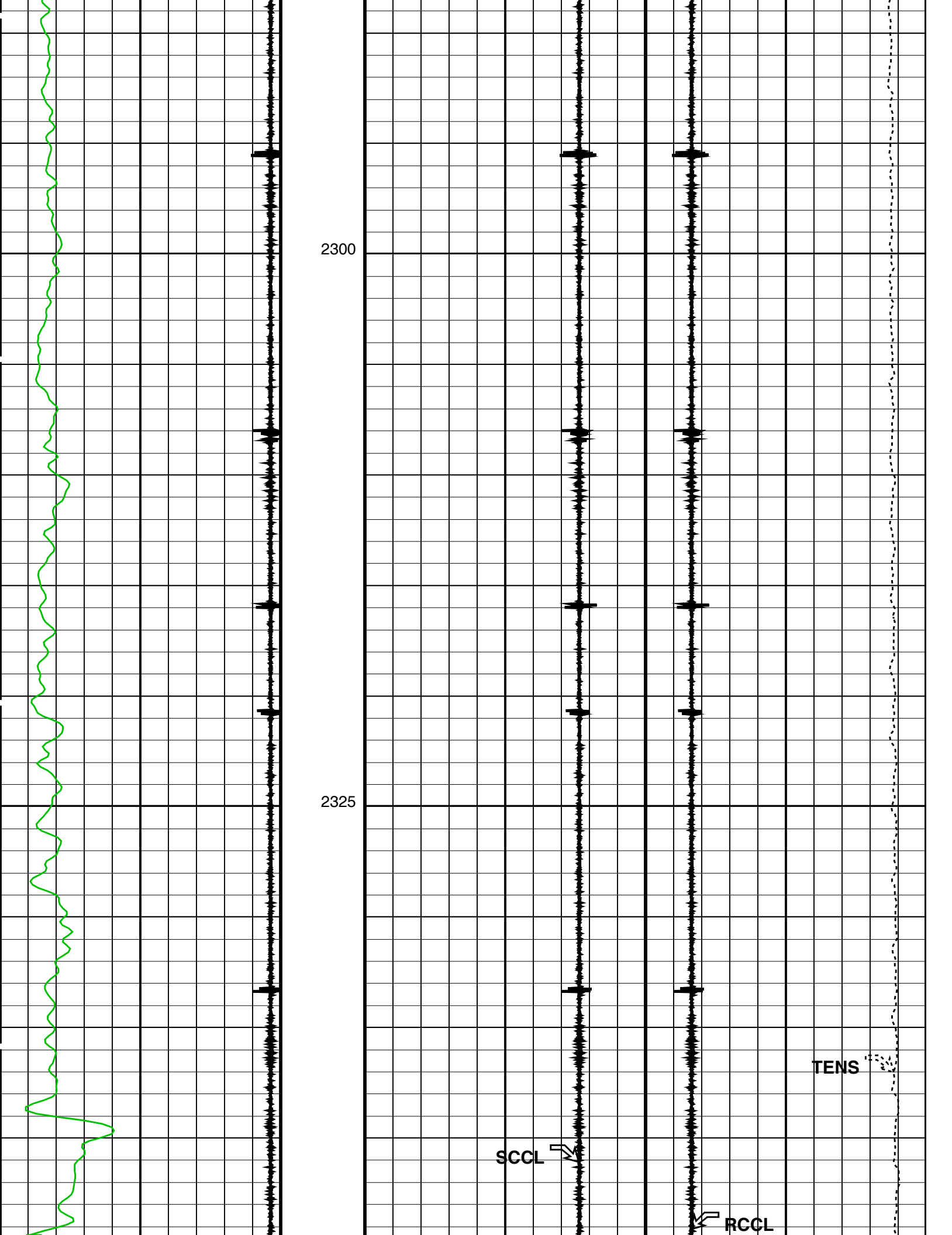
## OP System Version: 17C0-154

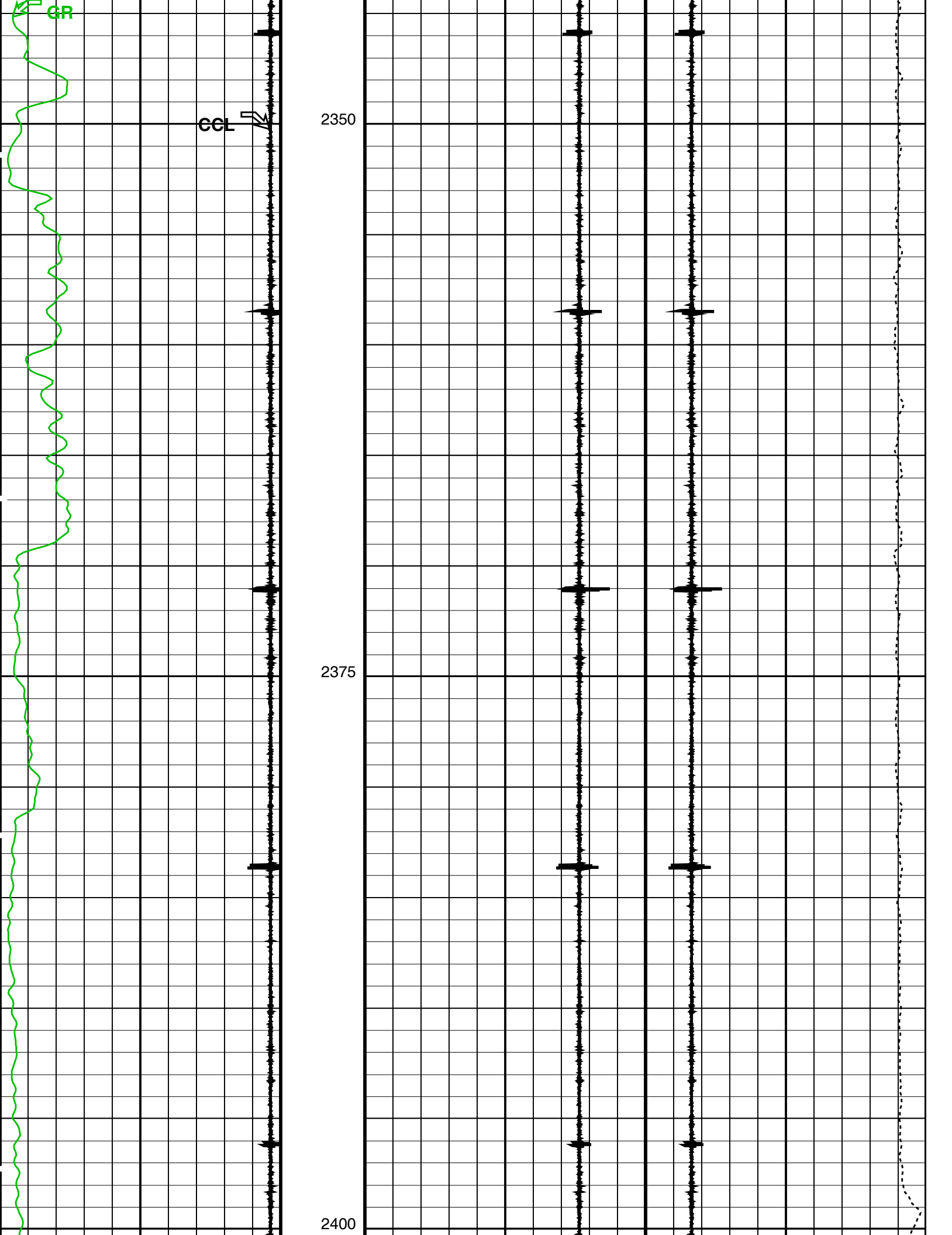
SHM\_GUN 17C0-154 PGGT-D 17C0-154

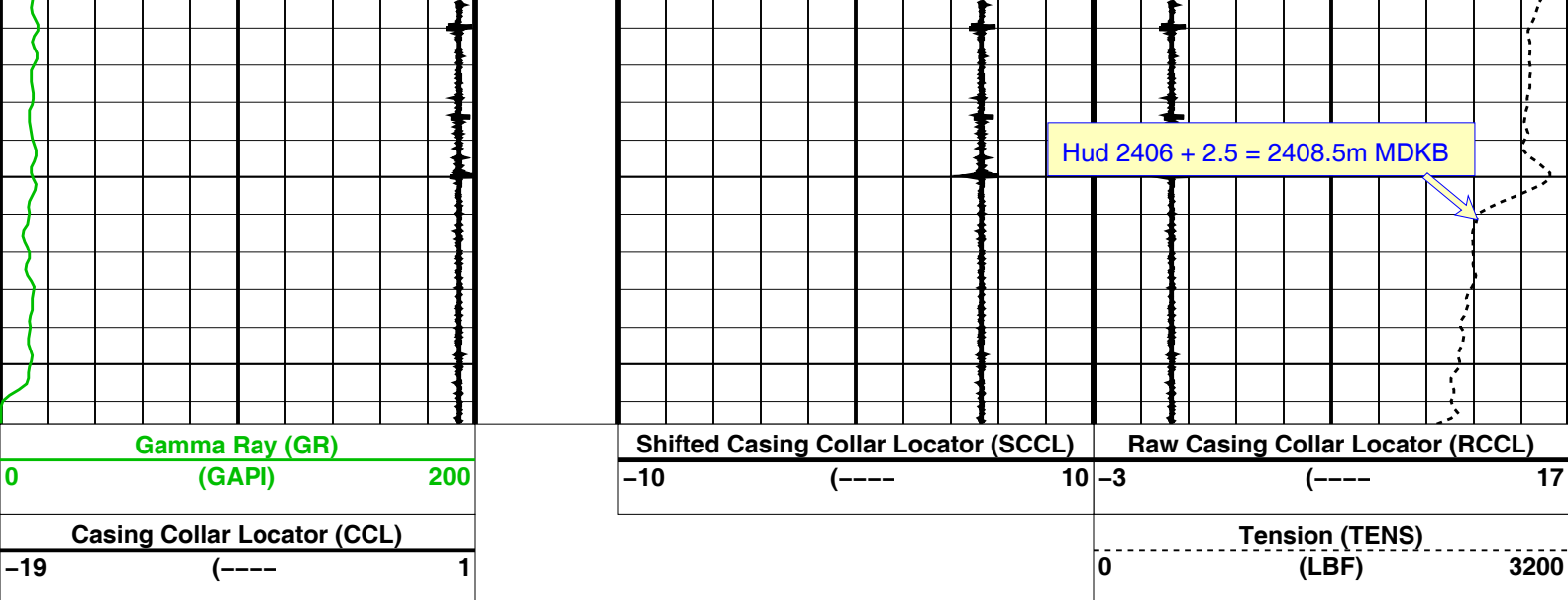
# PIP SUMMARY

Time Mark Every 60 S









### PIP SUMMARY

Time Mark Every 60 S

### Parameters

DLIS Name	Description	Value
DO	System and Miscellaneous	
PP	Depth Offset for Playback	0.3 M
	Playback Processing	NORMAL

Format: PERFO Vertical Scale: 1:200 Graphics File Created: 26-Nov-2009 23:36

### OP System Version: 17C0-154

SHM\_GUN 17C0-154 PGGT-D 17C0-154

### Input DLIS Files

DEFAULT PERFO\_020LUP FN:19 PRODUCER 26-Nov-2009 23:20 2411.3 M 2274.3 M

### Output DLIS Files

DEFAULT PERFO\_022PUP FN:21 PRODUCER 26-Nov-2009 23:36

Company: **Esso Australia Pty Ltd**

**Schlumberger**

Well: **WKF W12A**  
Field: **West Kingfish**  
Rig: **175**  
Country: **Australia**

Junk Basket with 6" Gauge Ring  
Max-R Setting Record  
Perforation Record 26-Nov-2009