

Company: Esso Australia Pty Ltd

Well: MACKEREL A14

Field: Mackereel

Rig: Rig 22/Prod 2

Country: Australia

3.65" Powercutter
Tubing Cut Record
27-Mar-2010

Rig: Rig 22/Prod 2
Field: Mackerel
Location: Bass Strait
Well: MACKEREL A14
Company: Esso Australia Pty Ltd

LOCATION			
Bass Strait Gippsland Basin	Elev.:	K.B.	33.80 m
		G.L.	-92.70 m
		D.F.	33.80 m
	Permanent Datum:	MSL	
Log Measured From:	D.F.	15.00 m	above Perm. Datum
Drilling Measured From:	K.B.		
State: Victoria	Max. Well Deviation 71.5 deg	Longitude 148° 20' 33.704" E	Latitude 38° 28' 44.838" S

Logging Date	27-Mar-2010
Run Number	1
Depth Driller	5206 m
Schlumberger Depth	2492 m
Bottom Log Interval	2590 m
Top Log Interval	2492 m
Casing Fluid Type	Sea Water
Salinity	
Density	8.1 lbm/gal
Fluid Level	0 m
BIT/CASING/TUBING STRING	
Bit Size	10.500 in
From	1219.2 m
To	4267.2 m
Casing/Tubing Size	4.500 in
Weight	43.5 lbm/ft
Grade	N-80
From	15.4 m
To	5132.84 m
Maximum Recorded Temperatures	
Logger On Bottom	27-Mar-2010 12:58
Unit Number	3827 AUSL
Recorded By	M. Pratt, O. Darby
Witnessed By	J. Diagiovanni, M. Wilson

PVT DATA	Oil Density	Run 1	Run 2	Run
	Water Salinity			
	Gas Gravity			
	Bo			
PVT DATA	Bw			
	1/Bg			
	Bubble Point Pressure			
	Bubble Point Temperature			
CEMENTING DATA	Solution GOR			
	Maximum Deviation	71.5 deg		
	Primary/Squeeze	Primary		
	Casing String No			
CEMENTING DATA	Lead Cement Type			
	Volume			
	Density			
	Water Loss			
CEMENTING DATA	Additives			
	Tail Cement Type			
	Volume			
	Density			
CEMENTING DATA	Water Loss			
	Additives			
	Expected Cement Top			
	Logging Date			
Run Number				
Depth Driller				
Schlumberger Depth				
Bottom Log Interval				
Top Log Interval				
Casing Fluid Type				
Salinity				
Density				
Fluid Level				
BIT/CASING/TUBING STRING				
Bit Size				
From				
To				
Casing/Tubing Size				
Weight				
Grade				
From				
To				
Maximum Recorded Temperatures				
Logger On Bottom				
Unit Number				
Recorded By				
Witnessed By				

DEPTH SUMMARY LISTING	
-----------------------	--

Date Created: 27-MAR-2010 3:33:15

Depth System Equipment

Depth Measuring Device		Tension Device		Logging Cable	
Type:	IDWC-C	Type:	CMTD-B/A	Type:	2-32ZT
Serial Number:	797	Serial Number:	1711	Serial Number:	24187
Calibration Date:	01-Mar-2010	Calibration Date:	10-Mar-2010	Length:	6000 M
Calibrator Serial Number:	30	Calibrator Serial Number:	1173		
Calibration Cable Type:	1-32ZT	Number of Calibration Points:	10	Conveyance Method:	Wireline
Wheel Correction 1:	-1	Calibration RMS:	7	Rig Type:	Offshore Fixed
Wheel Correction 2:	-2	Calibration Peak Error:	16		

Depth Control Parameters	
Depth (m)	0.0
Depth (m)	0.5
Depth (m)	1.0
Depth (m)	1.5
Depth (m)	2.0
Depth (m)	2.5
Depth (m)	3.0
Depth (m)	3.5
Depth (m)	4.0
Depth (m)	4.5
Depth (m)	5.0
Depth (m)	5.5
Depth (m)	6.0
Depth (m)	6.5
Depth (m)	7.0
Depth (m)	7.5
Depth (m)	8.0
Depth (m)	8.5
Depth (m)	9.0
Depth (m)	9.5
Depth (m)	10.0
Depth (m)	10.5
Depth (m)	11.0
Depth (m)	11.5
Depth (m)	12.0
Depth (m)	12.5
Depth (m)	13.0
Depth (m)	13.5
Depth (m)	14.0
Depth (m)	14.5
Depth (m)	15.0
Depth (m)	15.5
Depth (m)	16.0
Depth (m)	16.5
Depth (m)	17.0
Depth (m)	17.5
Depth (m)	18.0
Depth (m)	18.5
Depth (m)	19.0
Depth (m)	19.5
Depth (m)	20.0
Depth (m)	20.5
Depth (m)	21.0
Depth (m)	21.5
Depth (m)	22.0
Depth (m)	22.5
Depth (m)	23.0
Depth (m)	23.5
Depth (m)	24.0
Depth (m)	24.5
Depth (m)	25.0
Depth (m)	25.5
Depth (m)	26.0
Depth (m)	26.5
Depth (m)	27.0
Depth (m)	27.5
Depth (m)	28.0
Depth (m)	28.5
Depth (m)	29.0
Depth (m)	29.5
Depth (m)	30.0
Depth (m)	30.5
Depth (m)	31.0
Depth (m)	31.5
Depth (m)	32.0
Depth (m)	32.5
Depth (m)	33.0
Depth (m)	33.5
Depth (m)	34.0
Depth (m)	34.5
Depth (m)	35.0
Depth (m)	35.5
Depth (m)	36.0
Depth (m)	36.5
Depth (m)	37.0
Depth (m)	37.5
Depth (m)	38.0
Depth (m)	38.5
Depth (m)	39.0
Depth (m)	39.5
Depth (m)	40.0
Depth (m)	40.5
Depth (m)	41.0
Depth (m)	41.5
Depth (m)	42.0
Depth (m)	42.5
Depth (m)	43.0
Depth (m)	43.5
Depth (m)	44.0
Depth (m)	44.5
Depth (m)	45.0
Depth (m)	45.5
Depth (m)	46.0
Depth (m)	46.5
Depth (m)	47.0
Depth (m)	47.5
Depth (m)	48.0
Depth (m)	48.5
Depth (m)	49.0
Depth (m)	49.5
Depth (m)	50.0
Depth (m)	50.5
Depth (m)	51.0
Depth (m)	51.5
Depth (m)	52.0
Depth (m)	52.5
Depth (m)	53.0
Depth (m)	53.5
Depth (m)	54.0
Depth (m)	54.5
Depth (m)	55.0
Depth (m)	55.5
Depth (m)	56.0
Depth (m)	56.5
Depth (m)	57.0
Depth (m)	57.5
Depth (m)	58.0
Depth (m)	58.5
Depth (m)	59.0
Depth (m)	59.5
Depth (m)	60.0
Depth (m)	60.5
Depth (m)	61.0
Depth (m)	61.5
Depth (m)	62.0
Depth (m)	62.5
Depth (m)	63.0
Depth (m)	63.5
Depth (m)	64.0
Depth (m)	64.5
Depth (m)	65.0
Depth (m)	65.5
Depth (m)	66.0
Depth (m)	66.5
Depth (m)	67.0
Depth (m)	67.5
Depth (m)	68.0
Depth (m)	68.5
Depth (m)	69.0
Depth (m)	69.5
Depth (m)	70.0
Depth (m)	70.5
Depth (m)	71.0
Depth (m)	71.5
Depth (m)	72.0
Depth (m)	72.5
Depth (m)	73.0
Depth (m)	73.5
Depth (m)	74.0
Depth (m)	74.5
Depth (m)	75.0
Depth (m)	75.5
Depth (m)	76.0
Depth (m)	76.5
Depth (m)	77.0
Depth (m)	77.5
Depth (m)	78.0

Log Sequence:	Subsequent Log In the Well
Reference Log Name:	UNKNOWN
Reference Log Run Number:	UNKNOWN
Reference Log Date:	UNKNOWN

Depth Control Remarks	
-----------------------	--

1. Log correlated to EXXON Mobil tubing tally incorporated in approved Workover Program dated 22-Mar-2010
2. IDW used as primary depth control
3. Z-Chart used as a backup.
4. CMTD calibration: $a=1.02E-5$, $b=.8921$ & $c=-75.9$
5. 10K Pressure Equipment used
- 6.

DISCLAIMER

THE USE OF AND RELIANCE UPON THIS RECORDED-DATA BY THE HEREIN NAMED COMPANY (AND ANY OF ITS AFFILIATES, PARTNERS, REPRESENTATIVES, AGENTS, CONSULTANTS AND EMPLOYEES) IS SUBJECT TO THE TERMS AND CONDITIONS AGREED UPON BETWEEN SCHLUMBERGER AND THE COMPANY, INCLUDING: (a) RESTRICTIONS ON USE OF THE RECORDED-DATA; (b) DISCLAIMERS AND WAIVERS OF WARRANTIES AND REPRESENTATIONS REGARDING COMPANY'S USE OF AND RELIANCE UPON THE RECORDED-DATA; AND (c) CUSTOMER'S FULL AND SOLE RESPONSIBILITY FOR ANY INFERENCE DRAWN OR DECISION MADE IN CONNECTION WITH THE USE OF THIS RECORDED-DATA.

OTHER SERVICES1	OTHER SERVICES2
OS1: None	OS1:
OS2:	OS2:
OS3:	OS3:
OS4:	OS4:
OS5:	OS5:
REMARKS: RUN NUMBER 1	REMARKS: RUN NUMBER 2
log correlated to Tubing Tally incorporated in approved Workover Program	dated 22-Mar-2010 provided by client EXXON Mobil.
Objective: RIH with 3.65" Powercutter and cut production tubing at 3700m MDKB. Cut tubing at 3m below a coupling to maximise clean length of tubing to be fished without fouling on a tubing coupling below.	
Maximum deviation: 71.5deg @ 3465m MDKB.	
Deviation 67.4 – 71.5 deg from 1219 MDKB to TD	

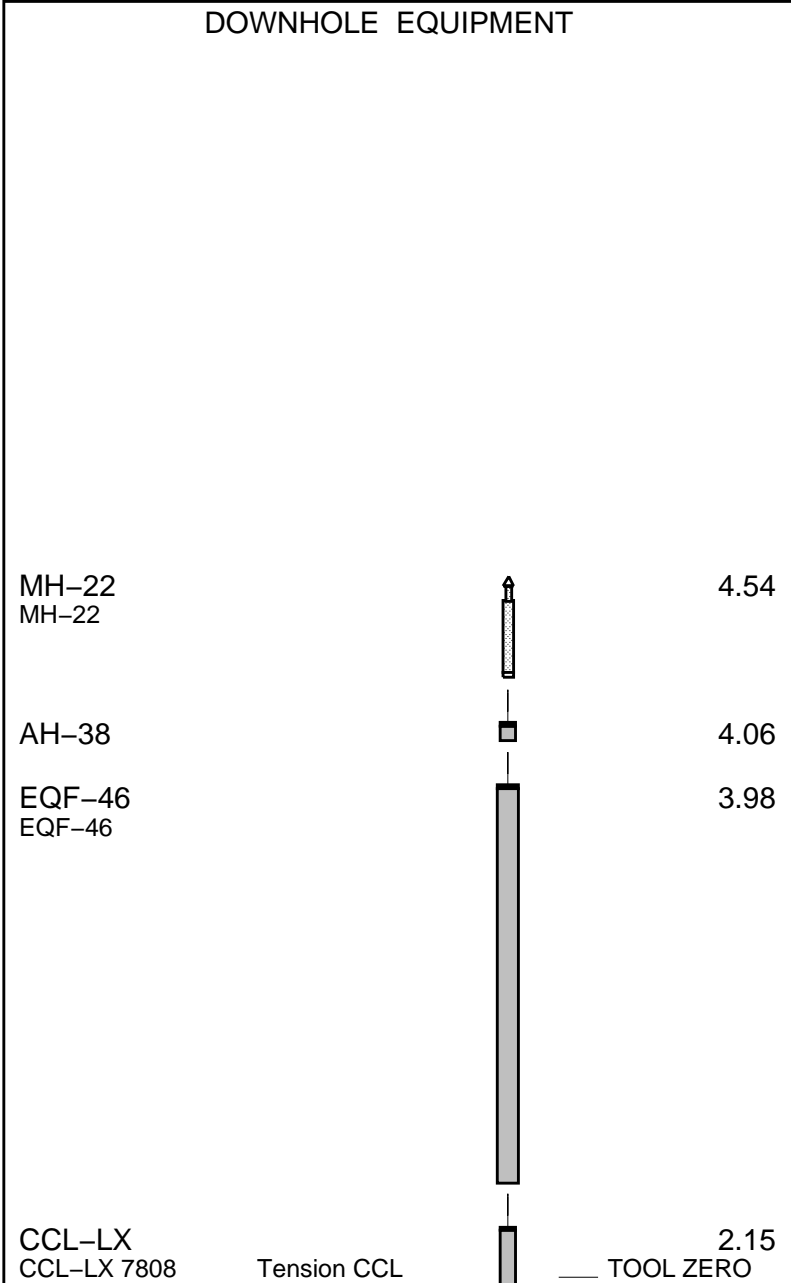
Powercutter:	
CCL to Cutter head : 1.93m	
CCL Stop Depth: 2517.67m	
Schlumberger Crew:	
Days: D. Watts, J. Donahue	
Nights: J. Annear, S. Lansbury	

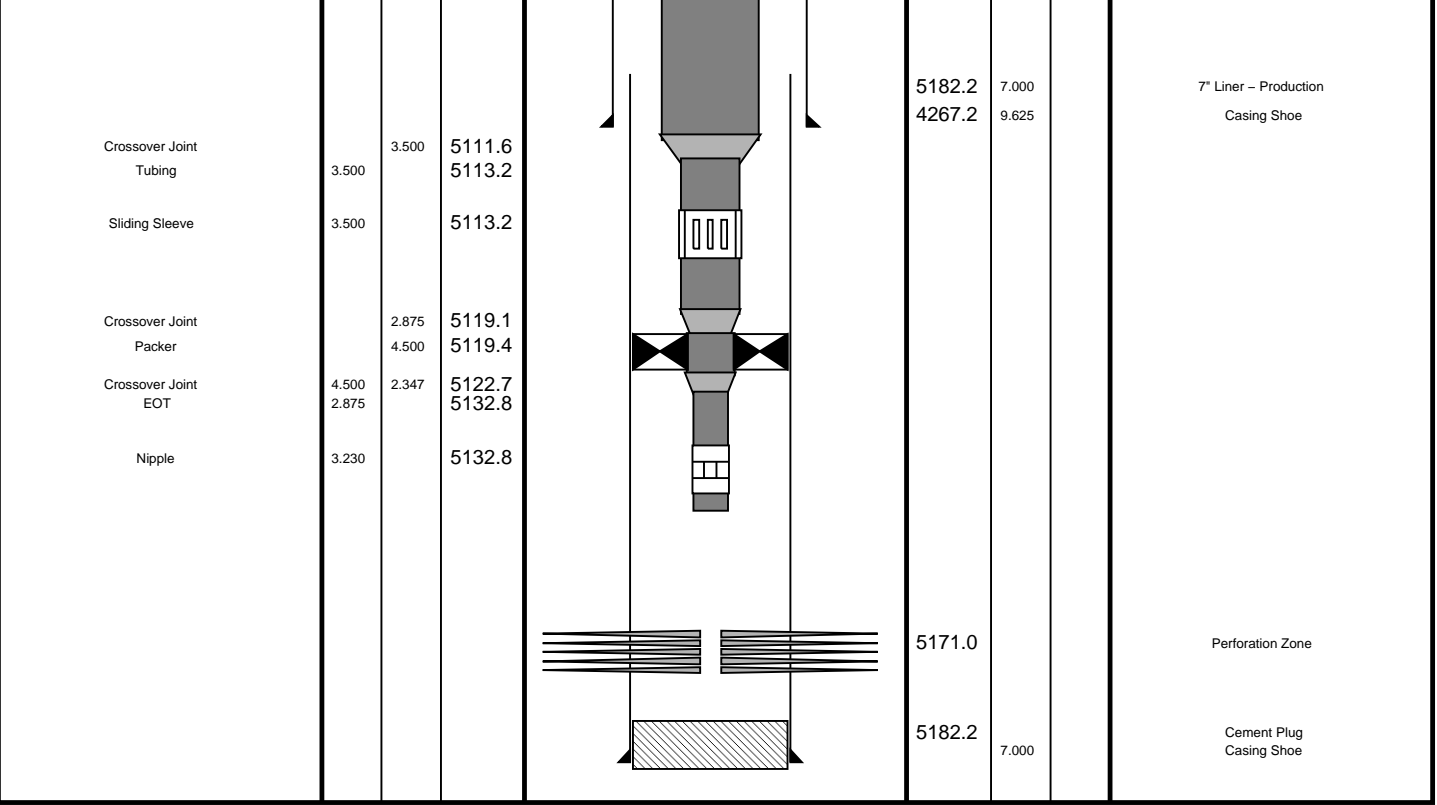
RUN 1			RUN 2		
SERVICE ORDER #:		4500629788	SERVICE ORDER #:		
PROGRAM VERSION:		17C0-154	PROGRAM VERSION:		
FLUID LEVEL:		0 m	FLUID LEVEL:		
LOGGED INTERVAL	START	STOP	LOGGED INTERVAL	START	STOP

EQUIPMENT DESCRIPTION					
RUN 1			RUN 2		

SURFACE EQUIPMENT

WITM (SHM)





Job Events Summary

MAXIS Field Log

Schlumberger Job Event Summary

Time	Elapsed Time	Depth (M)	File
------	--------------	-----------	------

Log Pass (up)	28-Mar-2010 11:09	000:09	2590.5 - 2492.8	PERFO_046LUP
Power Cutter Correlation Pass				
Log Pass (up)	28-Mar-2010 11:29	000:17	2575.7 - 2480.3	PERFO_048LUP
Power Cutter shooting pass				
Log Pass (up)	28-Mar-2010 12:06	000:19	1335.8 - 300.7	PERFO_051LUP

PERFO2 Operational Summary Listing

Device	Status	Req Depth (M)	Obs Depth (M)	Time Used
PC	Used	2519.6	2519.6	Sun Mar 28 11:40:24 2010

Company: Esso Australia Pty Ltd

Well: Mackerel A14

Output DLIS Files

DEFAULT

PERFO_048LUP

FN:47

PRODUCER

28-Mar-2010 11:29

2575.7 M

2480.3 M

OP System Version: 17C0-154

SHM_GUN

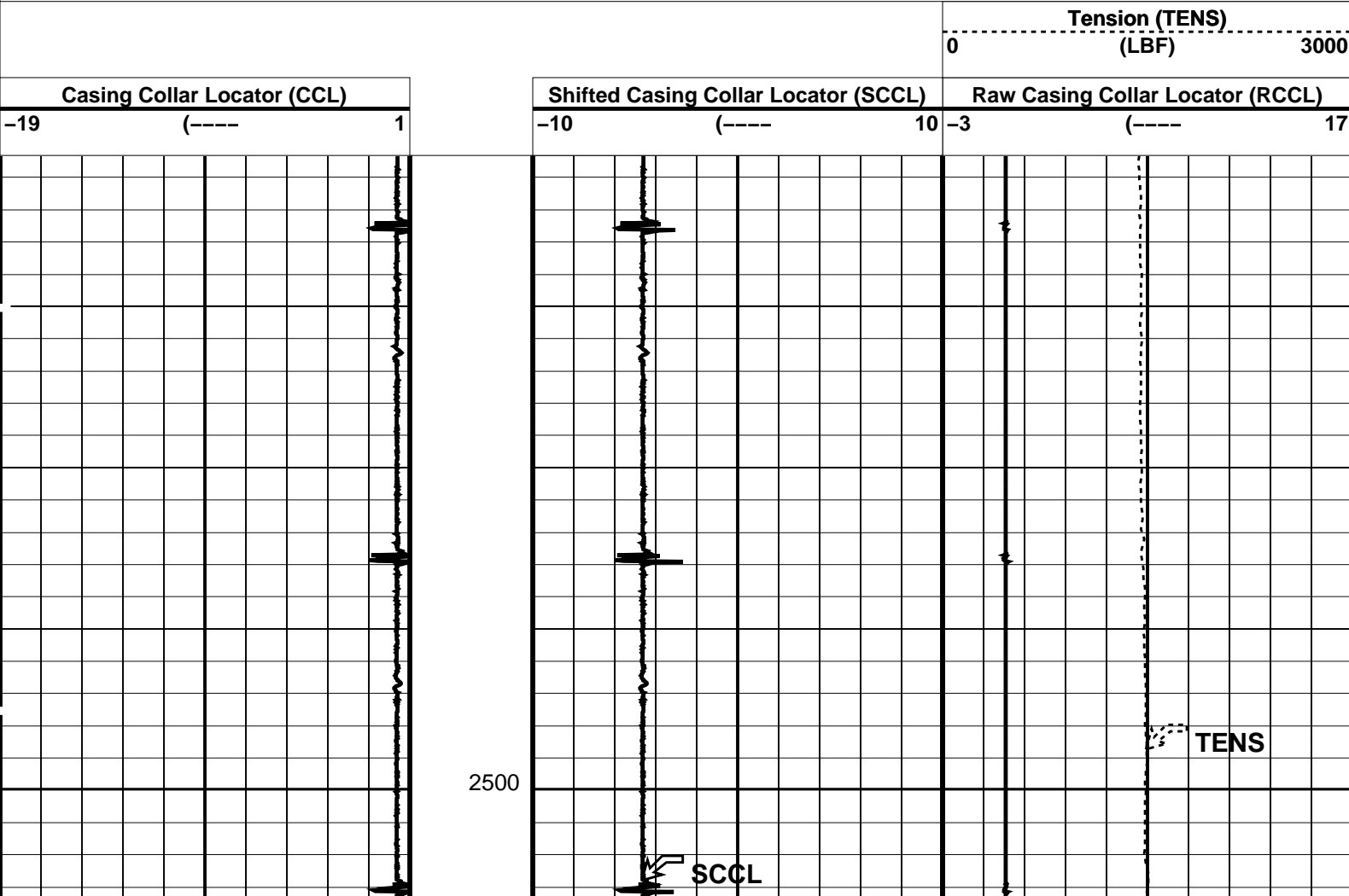
17C0-154

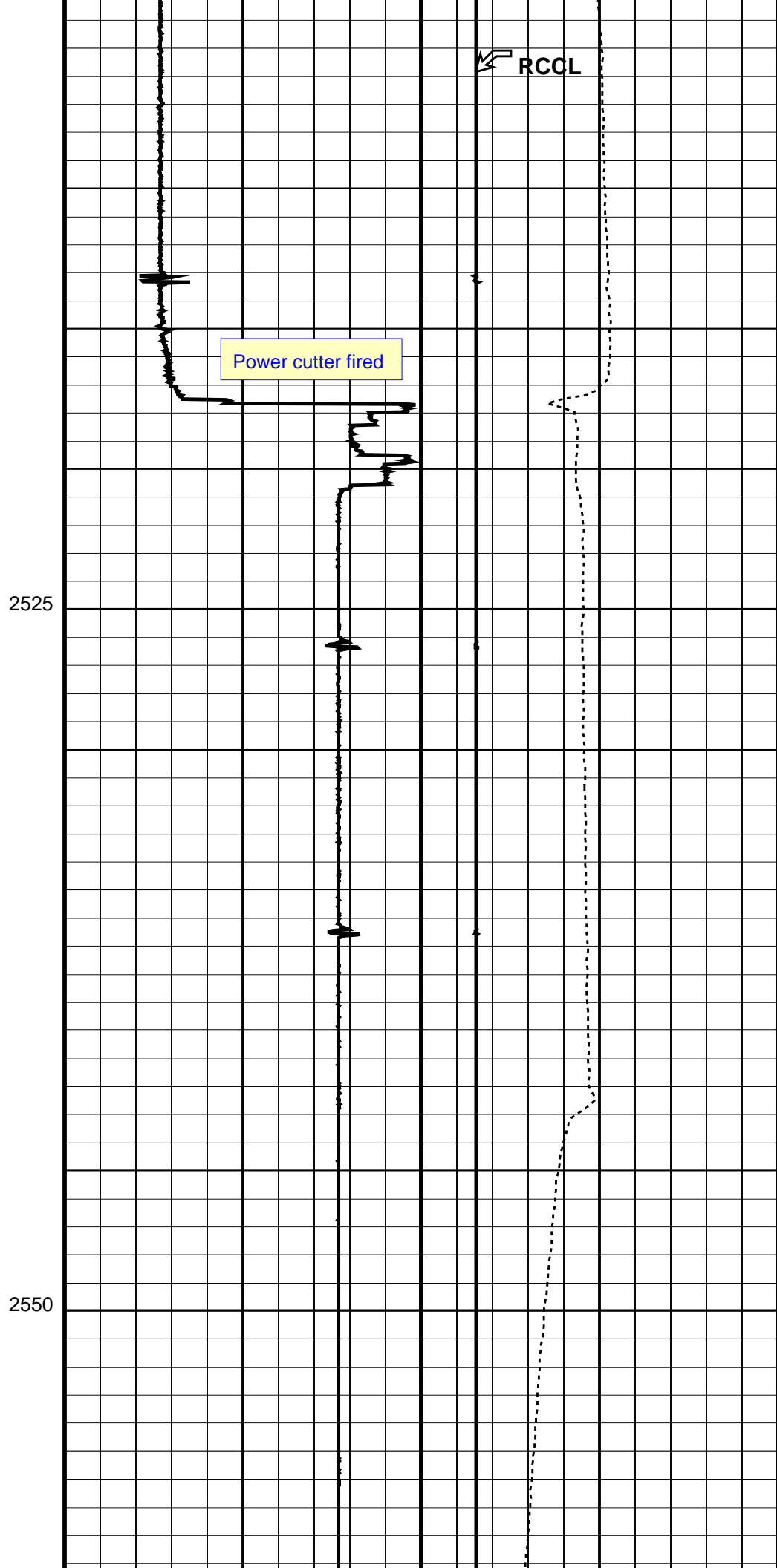
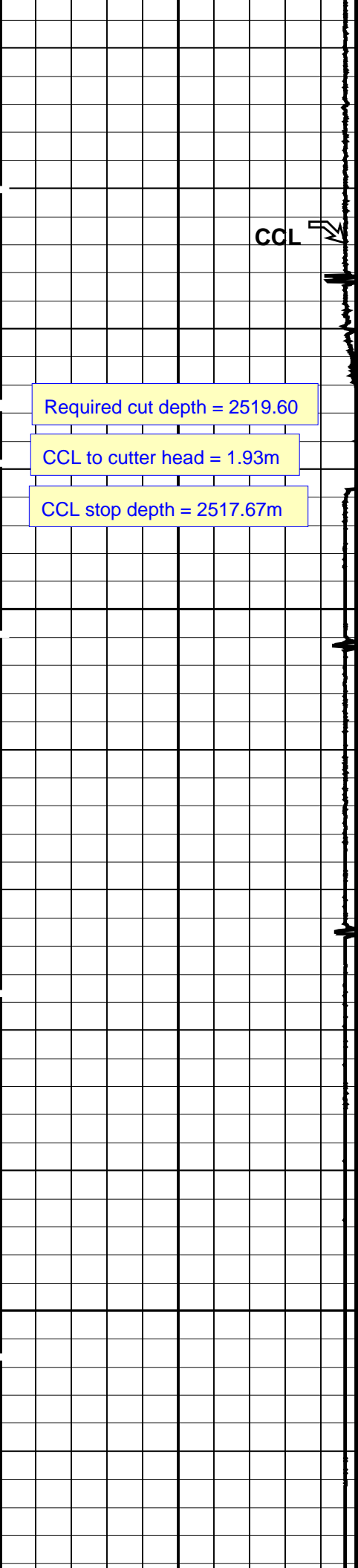
CCL-LX

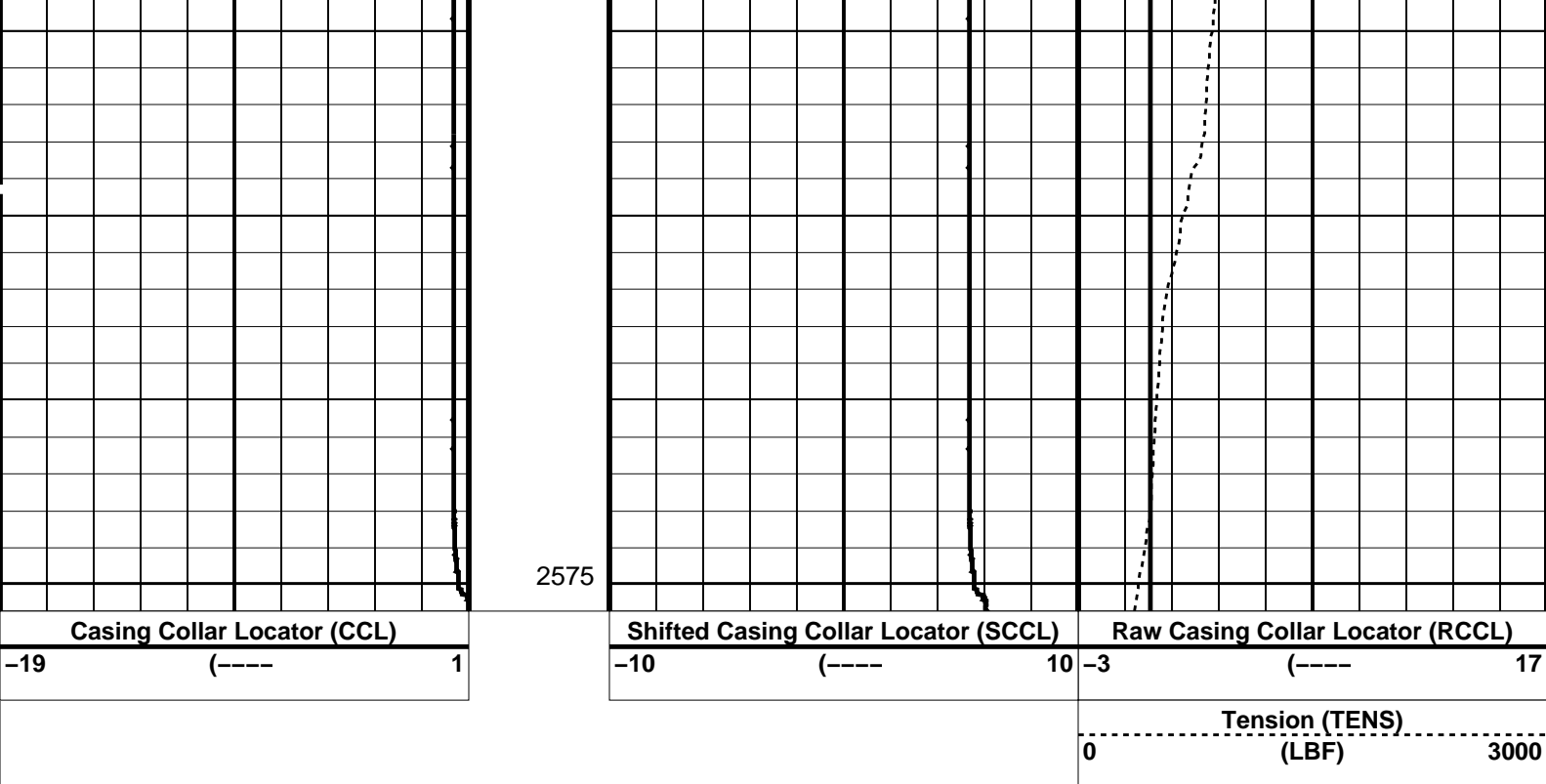
17C0-154

PIP SUMMARY

Time Mark Every 60 S







PIP SUMMARY

Time Mark Every 60 S

Parameters

DLIS Name	Description	Value
CCLD	CCL-LX: Casing Collar Locator	12 IN
CCLT	CCL reset delay	0.3 V
	CCL Detection Level	

Format: PERFO Vertical Scale: 1:200 Graphics File Created: 28-Mar-2010 11:29

OP System Version: 17C0-154

SHM_GUN 17C0-154 CCL-LX 17C0-154

Output DLIS Files

DEFAULT PERFO_048LUP FN:47 PRODUCER 28-Mar-2010 11:29

Schlumberger

Powercutter 3.65"
Correlation Pass

MAXIS Field Log

Company: Esso Australia Pty Ltd

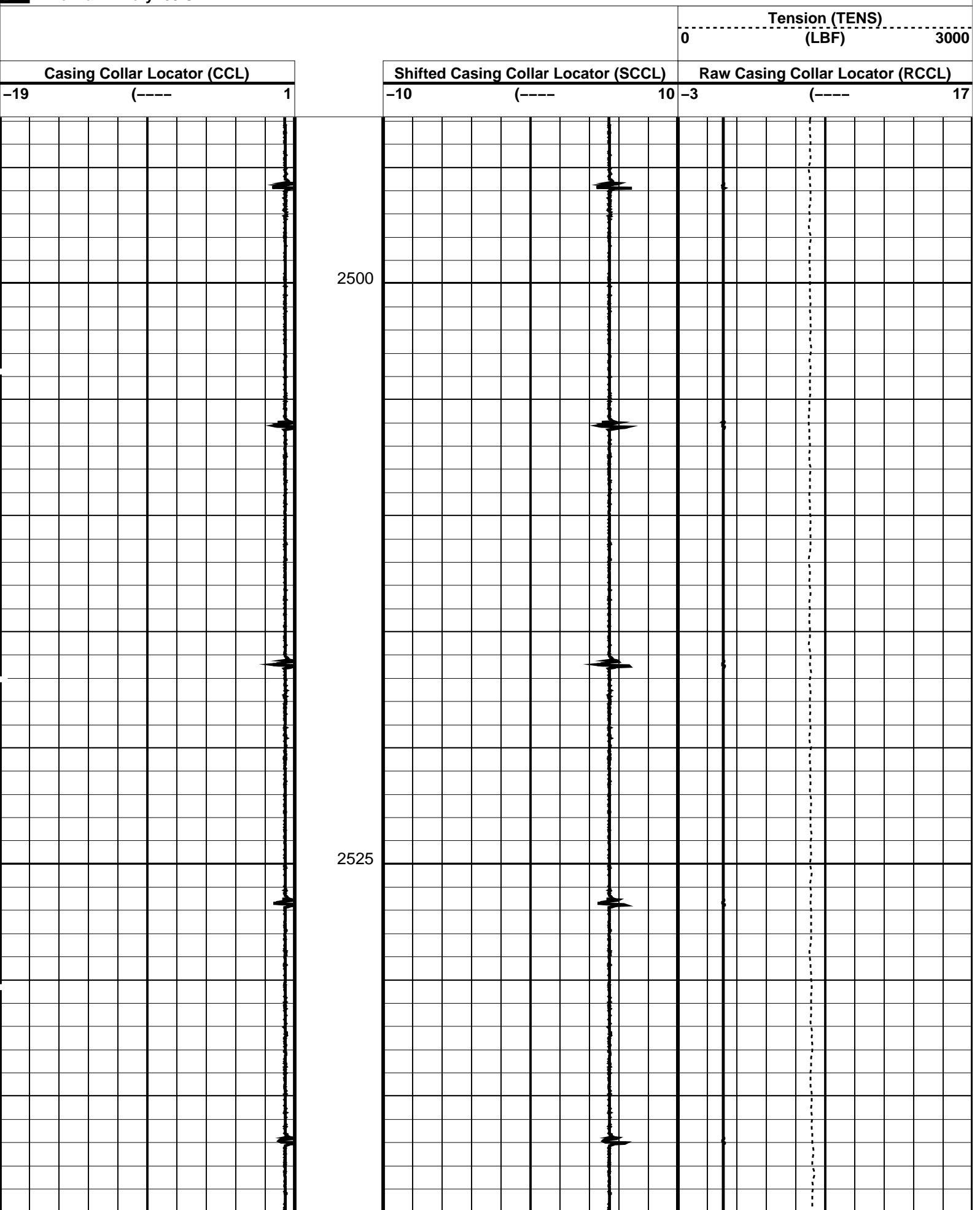
Well: Mackerel A14

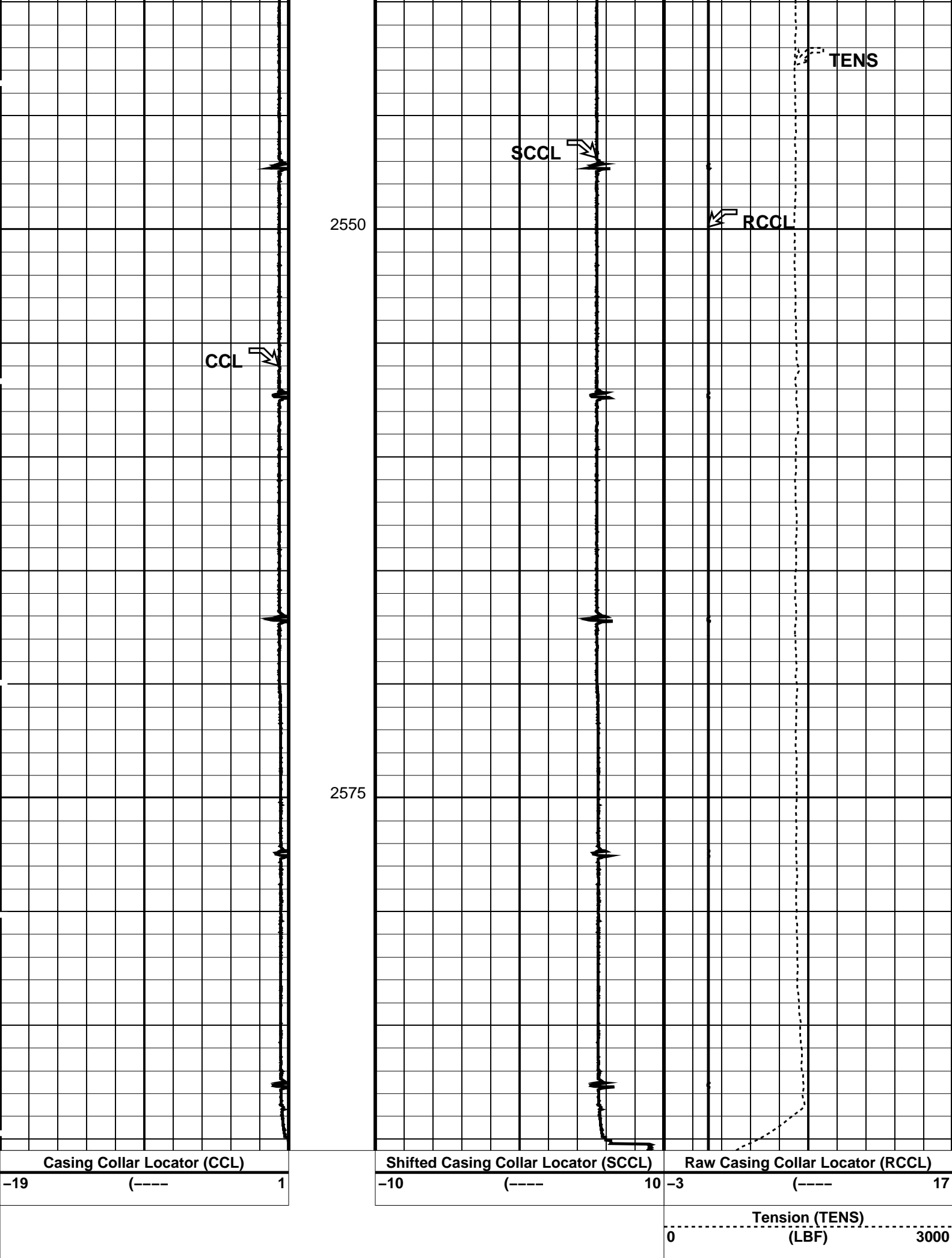
Output DLIS Files

DEFAULT PERFO_046LUP FN:45 PRODUCER 28-Mar-2010 11:09 2590.5 M 2492.8 M

OP System Version: 17C0-154

Time Mark Every 60 S





Time Mark Every 60 S

PIP SUMMARY

Parameters			
DLIS Name	Description	Value	
	CCL-LX: Casing Collar Locator		
CCLD	CCL reset delay	12	IN
CCLT	CCL Detection Level	0.3	V
Format: PERFO	Vertical Scale: 1:200	Graphics File Created: 28-Mar-2010 11:09	
OP System Version: 17C0-154			
SHM_GUN	17C0-154	CCL-LX	17C0-154
Output DLIS Files			
DEFAULT	PERFO_046LUP	FN:45	PRODUCER 28-Mar-2010 11:09

Company: Esso Australia Pty Ltd

Schlumberger

Well: MACKEREL A14

Field: Mackerel

Rig: Rig 22/Prod 2

Country: Australia

3.65" Powercutter

Tubing Cut Record

27-Mar-2010