

FROM (m): 600.0 TO (m): 2135.0 SCALE: 1/ 500

GENERAL DATA
 Client : Santos Limited
 Country : Australia
 Permit : VIC/P44
 Basin : Otway Basin
 Well Type : Appraisal
 Rig Name : Ocean Epoch

LOCATION DATA
 Latitude : 38° 46' 34.558" S
 Longitude : 142° 44' 05.437" E
 RT - LAT (m): 22.4
 Water Depth (m): 66.65

CASING
 762/500 mm (30"/20") Shoe (m): 121.3 m
 340 mm (13-3/8") Shoe (m): 635.83 m
 244 mm (9-5/8") Shoe (m): 2113.25 m

FINAL WELL DATA
 MD- Drillers Depth (m): 2135.0 m
 TVD- Subsea (m): 2112.4 m
 Date Well Spudded : 14-10-2003
 Date TD Reached : 30-10-2003
 Final Status : Plugged & Suspended
 Gas Well

GAS RATIOS FORMULAE

GAS WETNESS RATIO (Wh)
 $GWR = (C2 + C3 + C4 + C5) / (C1 + C2 + C3 + C4 + C5) * 100$

LIGHT TO HEAVY RATIO (Bh)
 $LHR = (C1 + C2) / (C3 + C4 + C5)$

OIL CHARACTER QUALIFIER (Ch)
 $OCQ = (C4 + C5) / (C3)$

LITHOLOGY LEGEND

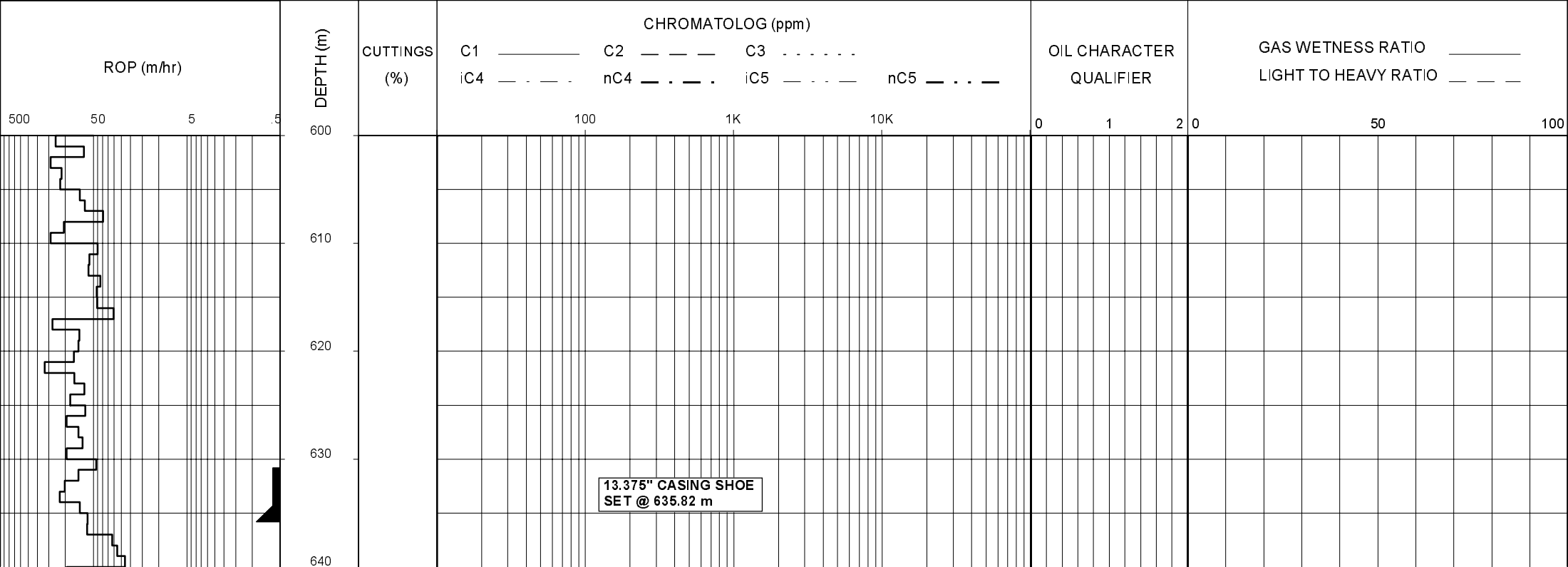
	Limestone		Conglomerate		Mica
	Coal		Dolomite		Ferrous
	Clay		Carb. Siltstone		Chert
	Siltstone		Calc. Siltstone		Calcareous
	Med Sandstone		Pyrite		Dolomitic
	Coarse Sandston		Siderite		Carbonaceous
	Fine Sandstone		Glauconite		Lithoclast
	VF Sandstone		Feldspar		Breccia

1 unit = 200 ppm methane equivalent in air

GEOSERVICES CREW

ALS ENGINEERS
 Gavin Fernandes
 Gedeon Doczy
 Stan Willson
 Patrick Misquitta

MUDLOGGERS
 David Adderley
 Babu JV



BIT #3: Smith MOZTL TCI
SIZE: 12.25" JETS: 4x16
IN: 645m OUT: 1226m
RUN: 581m HRS: 13.7
COND: 3-4-BT-M2-E-2-ER-BHA

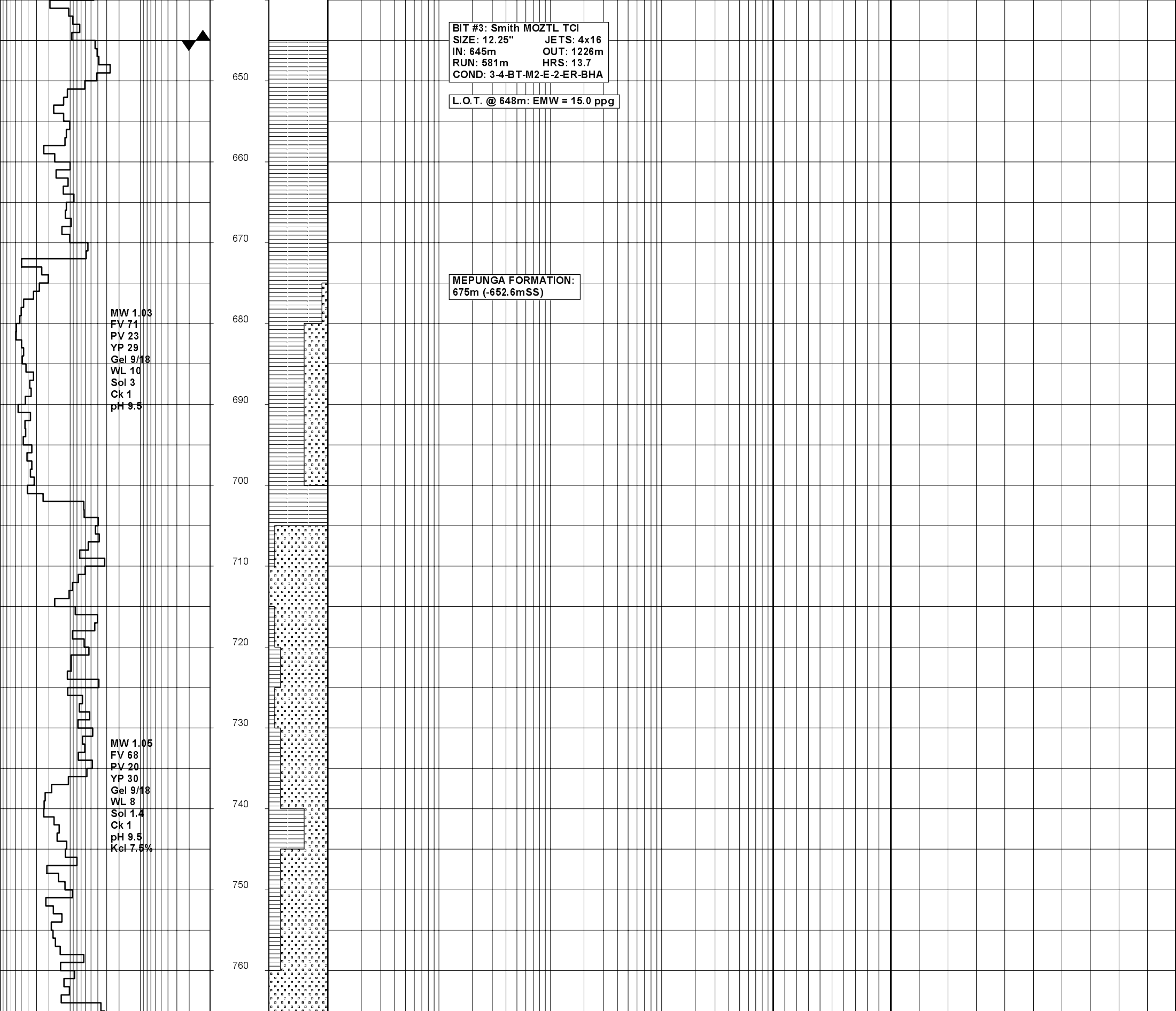
L.O.T. @ 648m: EMW = 15.0 ppg

MEPUNGA FORMATION:
675m (-652.6mSS)

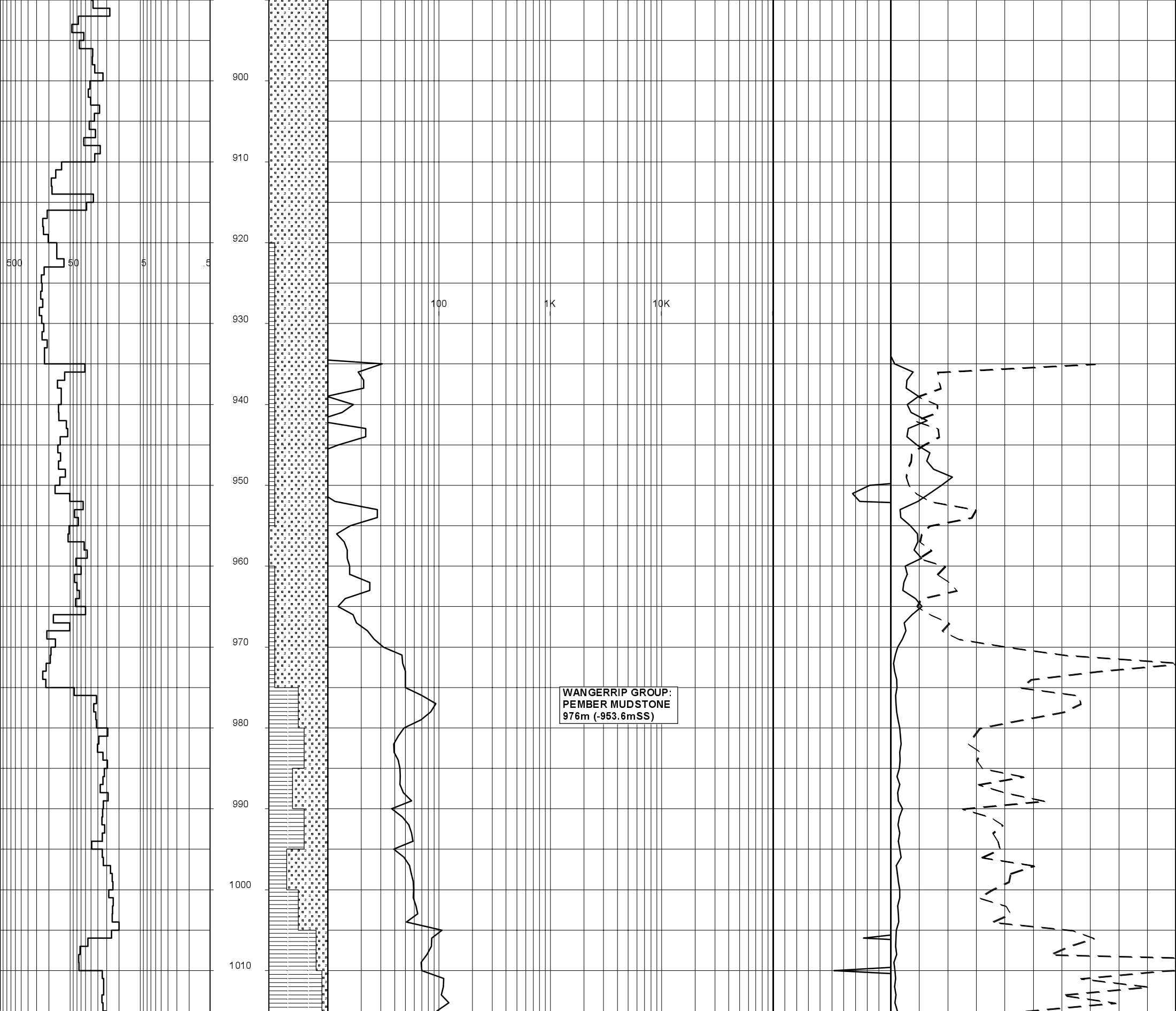
MW 1.03
FV 71
PV 23
YP 29
Gel 9/18
WL 10
Sol 3
Ck 1
pH 9.5

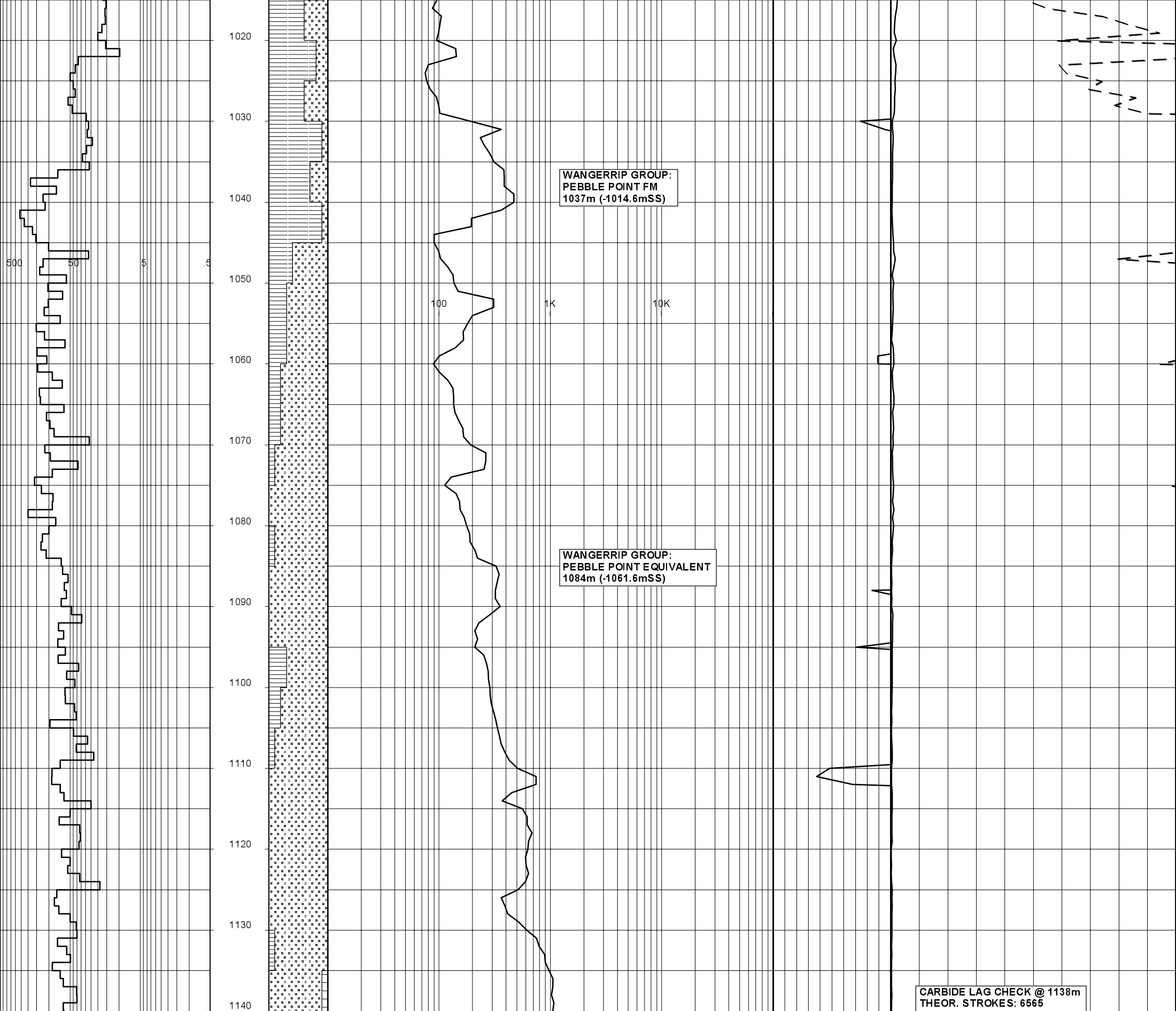
MW 1.05
FV 68
PV 20
YP 30
Gel 9/18
WL 8
Sol 1.4
Ck 1
pH 9.5
Kcl 7.5%

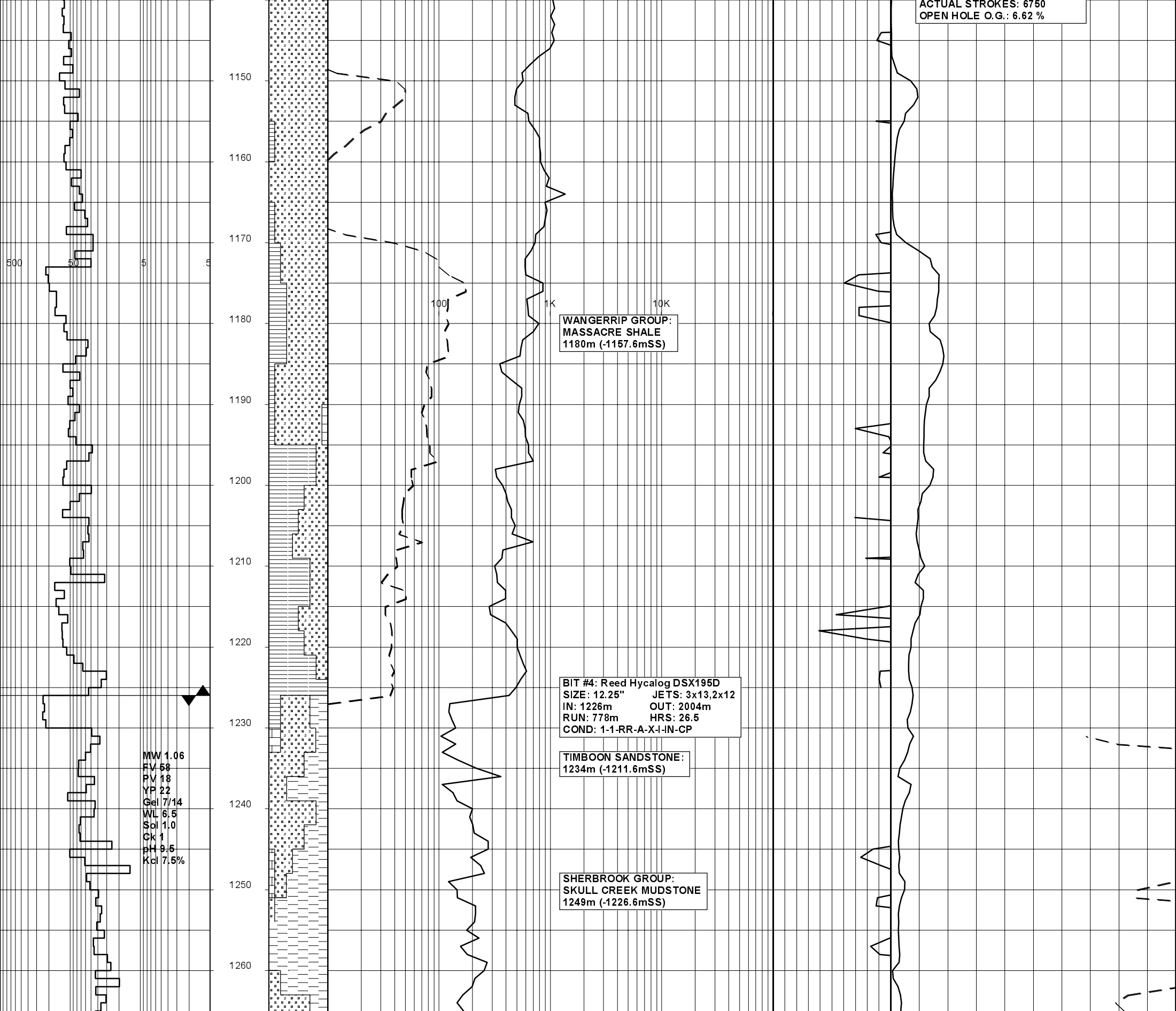
650
660
670
680
690
700
710
720
730
740
750
760











1150
1160
1170
1180
1190
1200
1210
1220
1230
1240
1250
1260

WANGERRIP GROUP:
MASSACRE SHALE
1180m (-1157.6mSS)

BIT #4: Reed Hycalog DSX195D
SIZE: 12.25" JETS: 3x13,2x12
IN: 1226m OUT: 2004m
RUN: 778m HRS: 26.5
COND: 1-1-RR-A-X-I-IN-CP

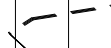
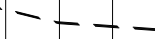
TIMBOON SANDSTONE:
1234m (-1211.6mSS)

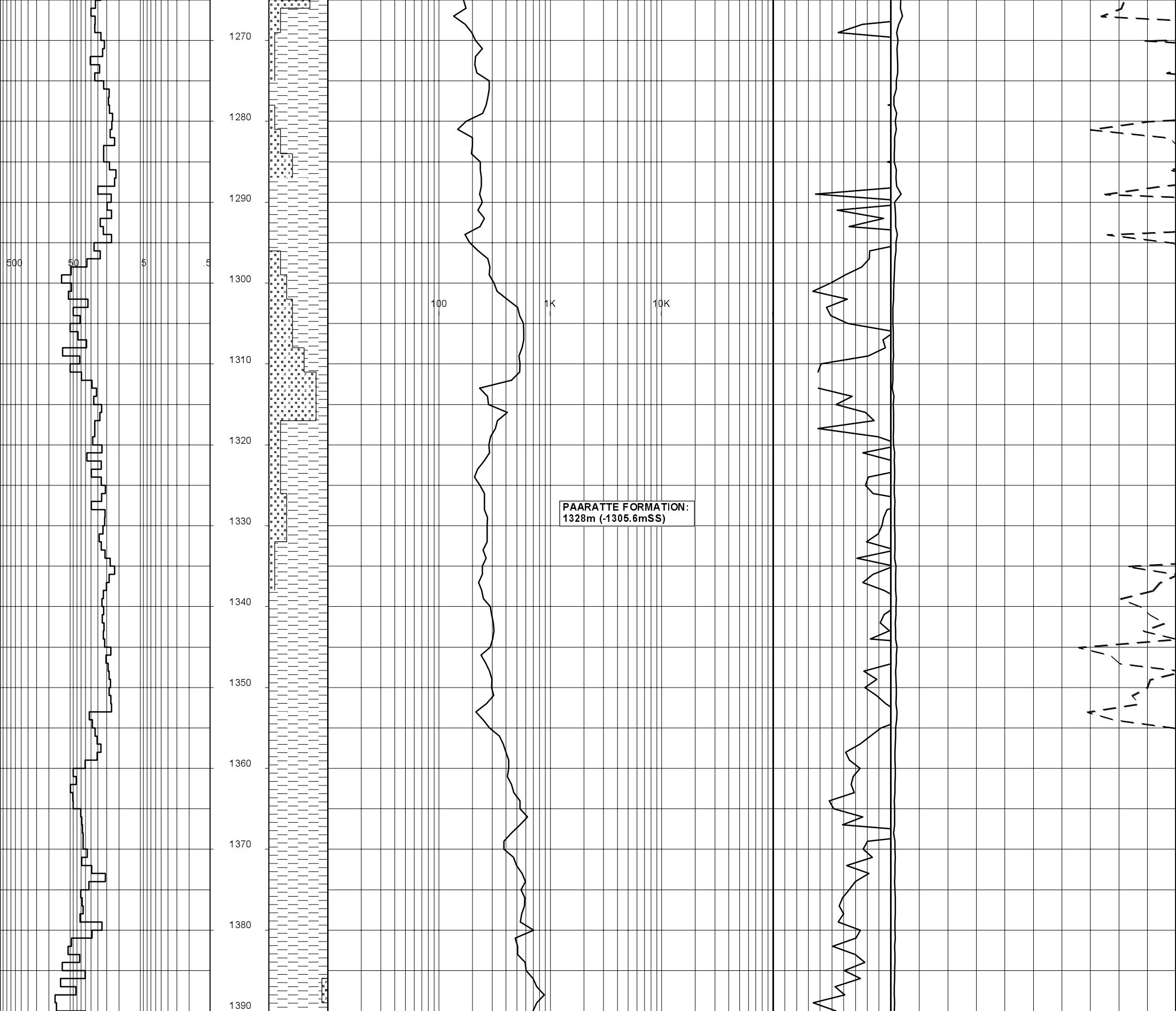
SHERBROOK GROUP:
SKULL CREEK MUDSTONE
1249m (-1226.6mSS)

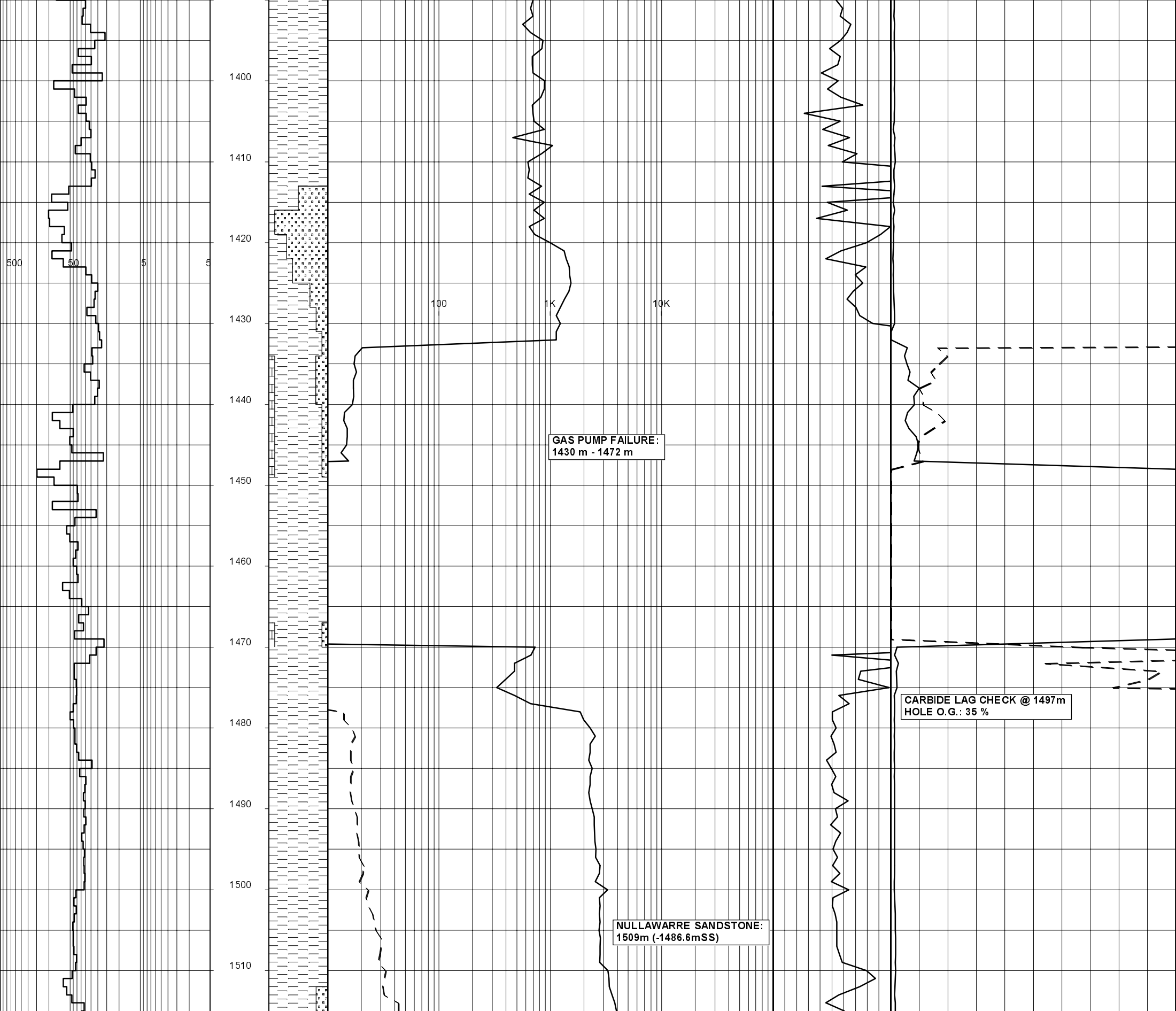
MW 1.06
FV 58
PV 18
YP 22
Gel 7/14
WL 6.5
Sol 1.0
Ck 1
pH 9.5
Kcl 7.5%

500 50 5 5

100 1K 10K







1400
1410
1420
1430
1440
1450
1460
1470
1480
1490
1500
1510

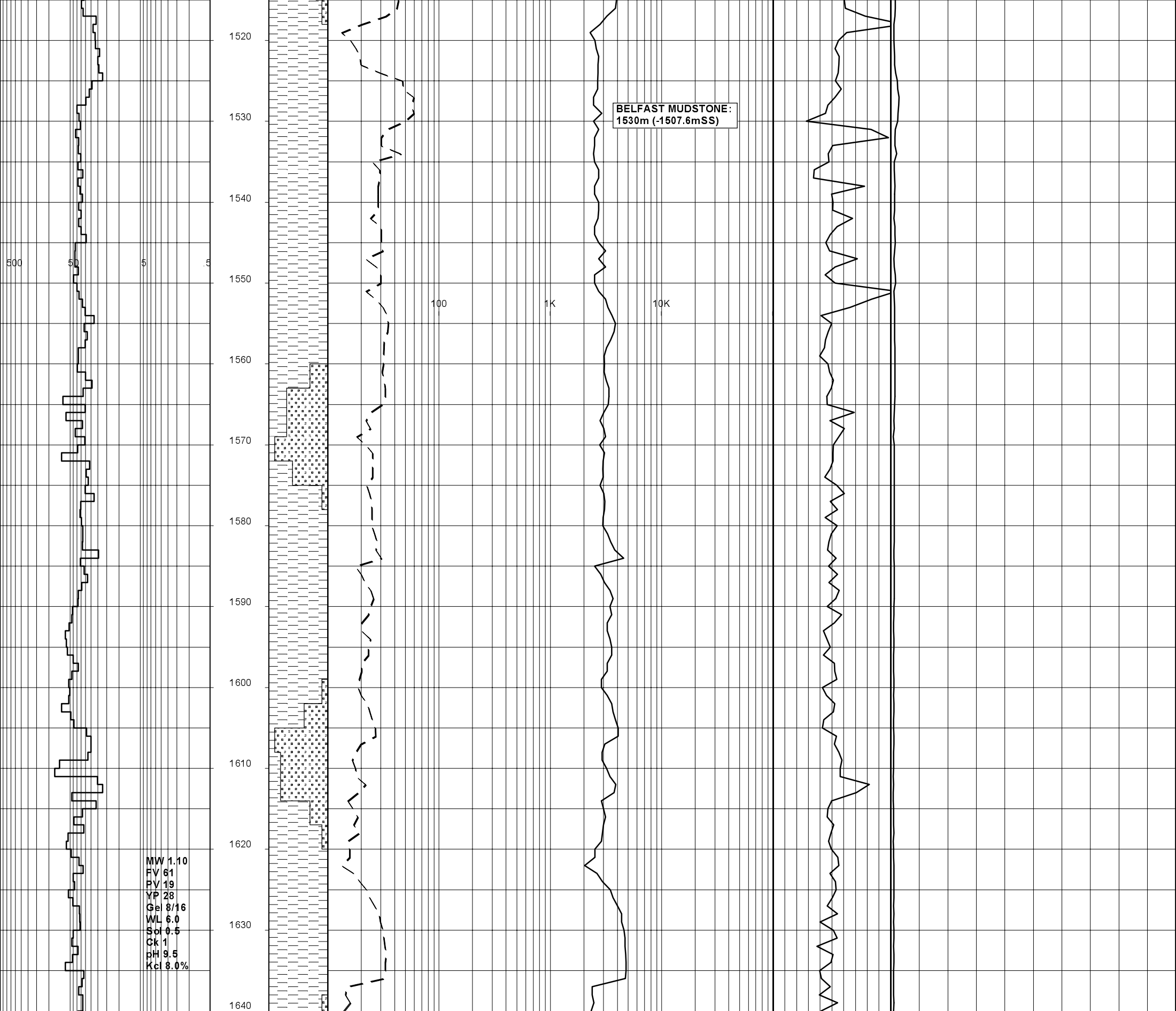
500 50 5

100 1K 10K

GAS PUMP FAILURE:
1430 m - 1472 m

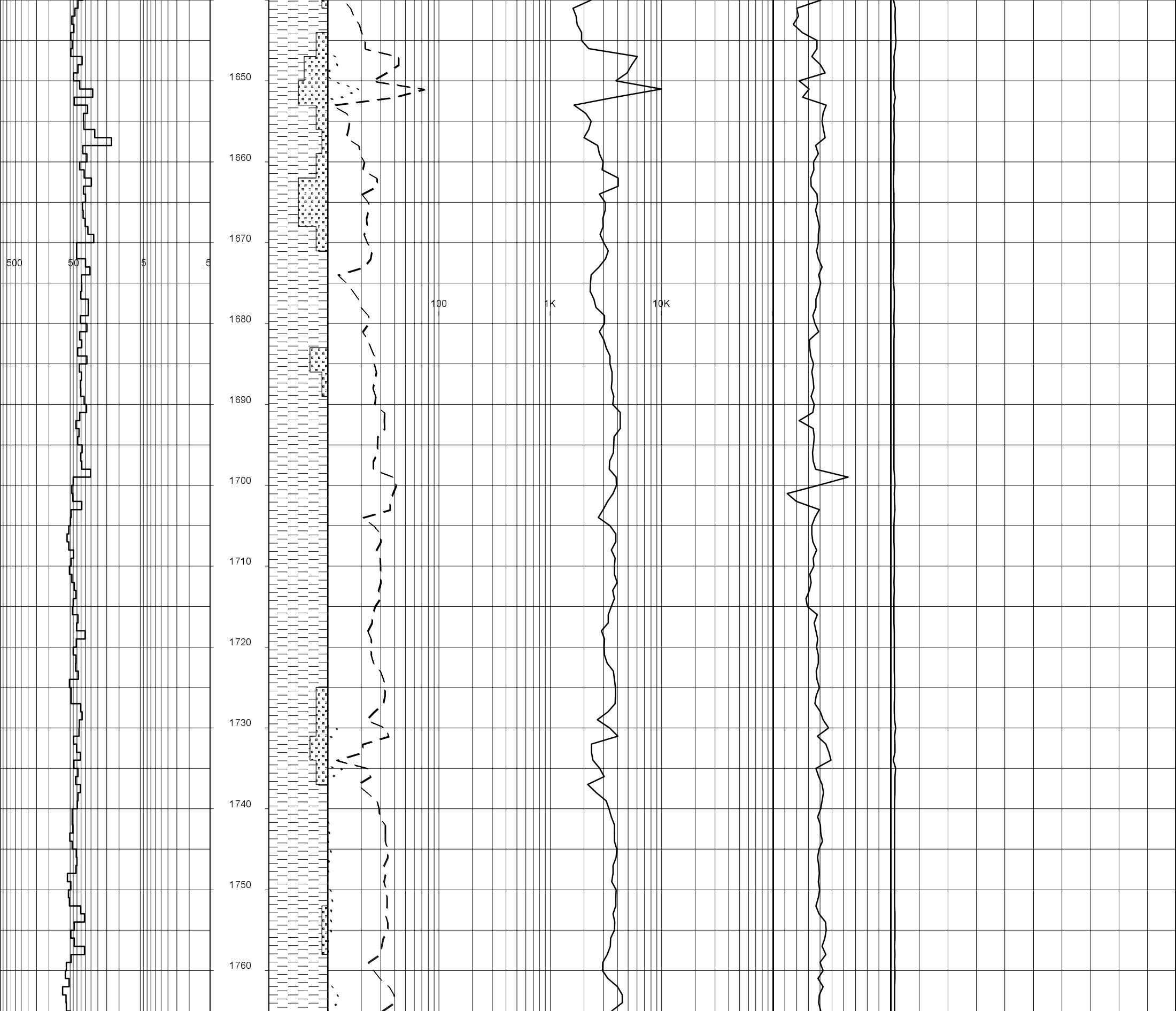
CARBIDE LAG CHECK @ 1497m
HOLE O.G.: 35 %

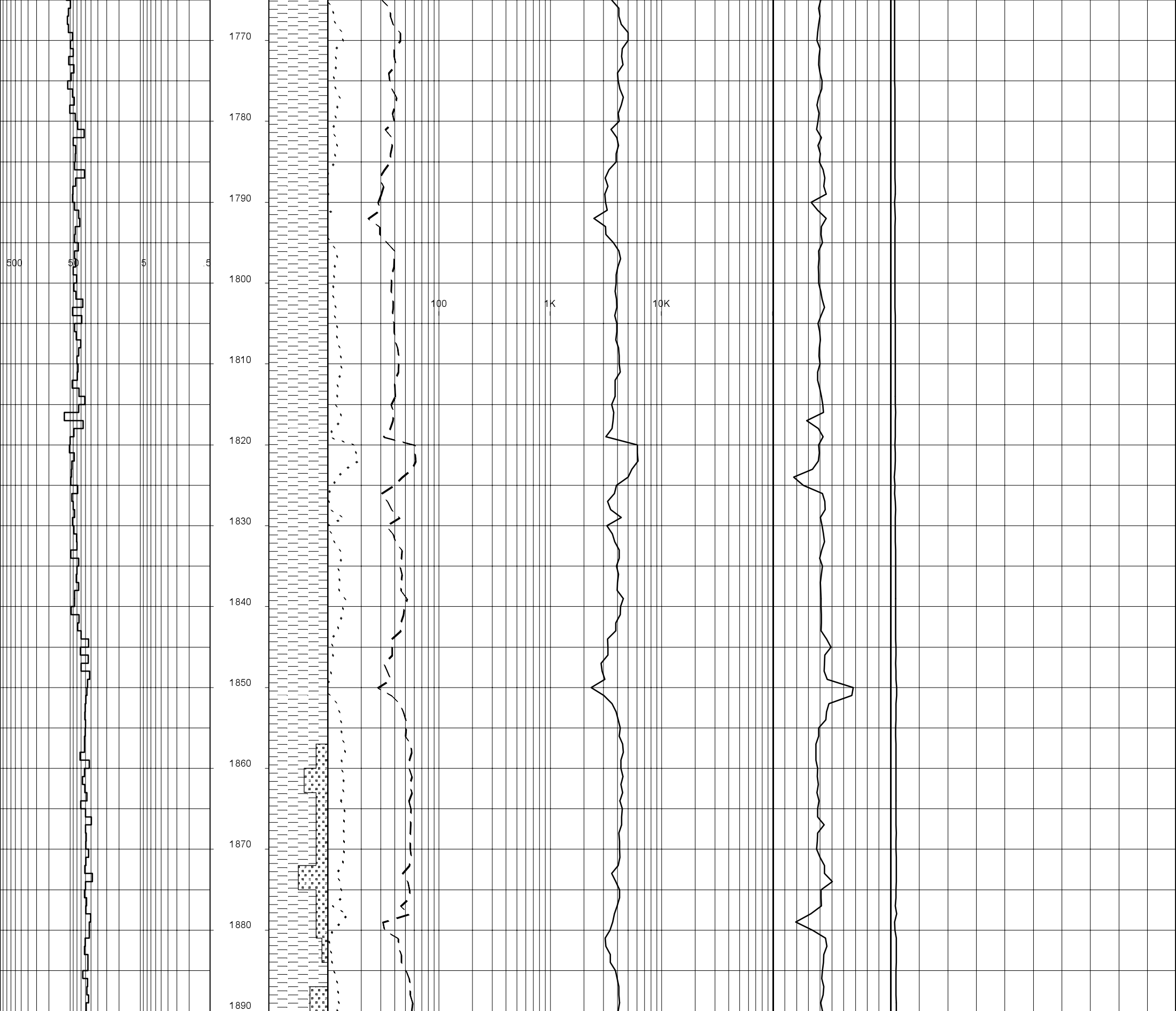
NULLAWARRE SANDSTONE:
1509m (-1486.6mSS)



BELFAST MUDSTONE:
1530m (-1507.6mSS)

MW 1.10
FV 61
PV 19
YP 28
Ge 8/16
WL 6.0
Sol 0.5
Ck 1
pH 9.5
Kcl 8.0%







1900
1910
1920
1930
1940
1950
1960
1970
1980
1990
2000
2010

500 50 5

100 1K 10K

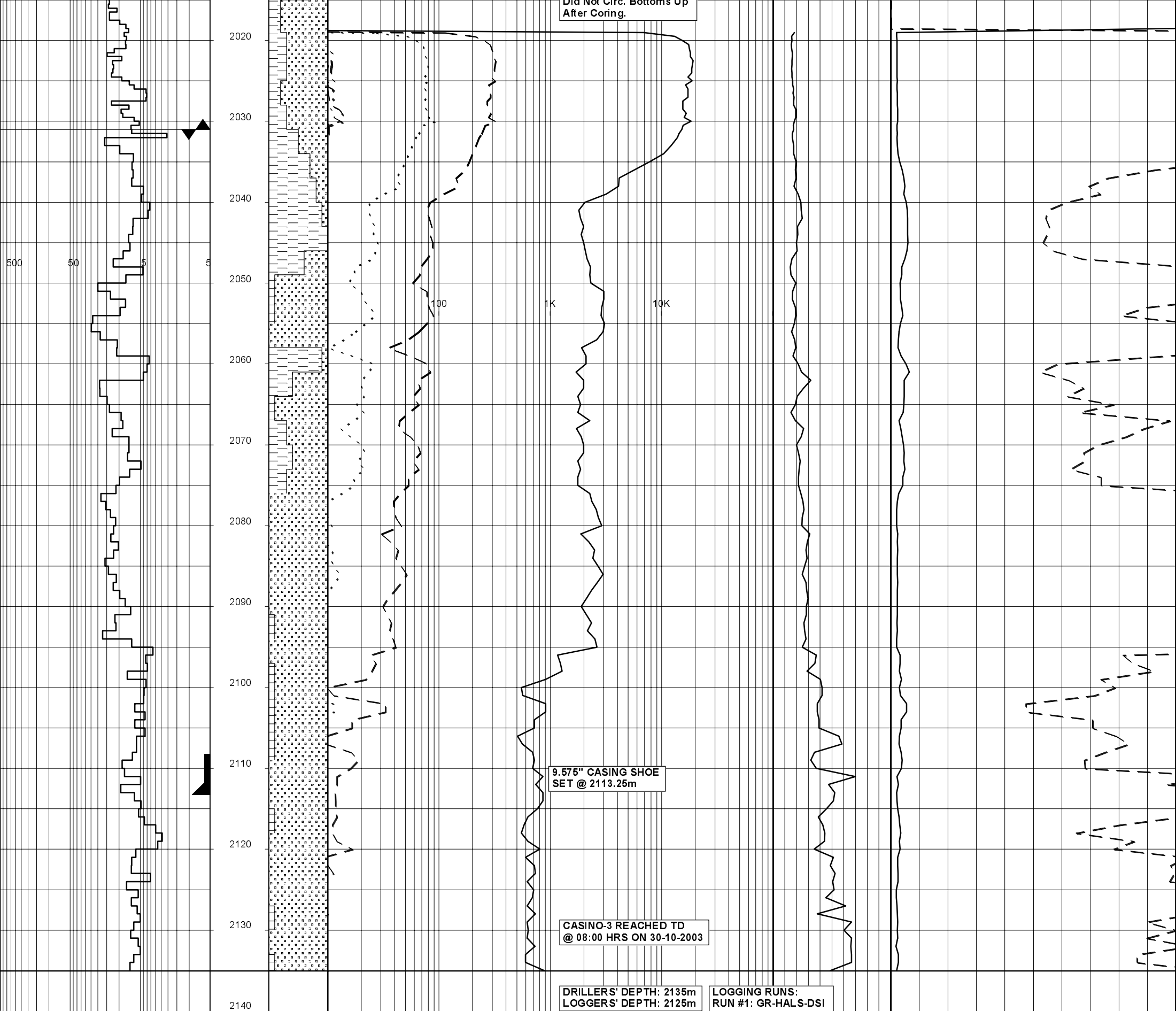
FLAXMANS FORMATION:
1941m (-1918.6mSS)

WAARRE FORMATION:
1999m (-1976.6mSS)

CORE BIT #1: Security CD93 CH
 SIZE: 12.25" TFA: 1.5in²
 IN: 2004m OUT: 2031m
 RUN: 27m HRS: 2.8
 COND: 1-1-NO-A-X-I-NO-TD
 RECOVERY: 24.7m 91.5%

BIT #4RR: Reed Hycalog DSX195D
 SIZE: 12.25" JETS: 2x12,3x13
 IN: 2031m OUT: 2135m
 RUN: 104m HRS: 15.41
 COND: 2-2-WT-T-X-I-BU/CT-TD

Did Not Core Bottoms Up



Did Not Circ. Bottoms Up
After Coring.

2020
2030
2040
2050
2060
2070
2080
2090
2100
2110
2120
2130
2140

500 50 5 .5

100 1K 10K

9.575" CASING SHOE
SET @ 2113.25m

CASINO-3 REACHED TD
@ 08:00 HRS ON 30-10-2003

DRILLERS' DEPTH: 2135m
LOGGERS' DEPTH: 2125m

LOGGING RUNS:
RUN #1: GR-HALS-DSI

