



PRESSURE EVALUATION LOG

DEPT. NAT. RES. & ENV
PE600130

WELL: WILD DOG-1

COMPANY : SHELL AUSTRALIA
RIG : DIAMOND M EPOCH
AREA : TORQUAY SUB-BASIN
COUNTRY : AUSTRALIA
LOCATION : 38°47'17.2"S 144°07'33.3"
ELEVATION : Air Gap 22.30 m (RT-MSL)
Water Depth 79.04 m (MSL-SB)
DEPTH REF.: ROTARY TABLE

SPUD DATE : 24-12-92
TD DATE : 03-01-93
TD DRILLER : 1222 m (1222 m TVD)
TD WIRELINE : 1223 m (1223 m TVD)
LOGGED FROM : 24-12-92 @ 101 m
LOGGED TO : 03-01-93 @ 1222 m
STATUS : PLUGGED AND ABANDONED

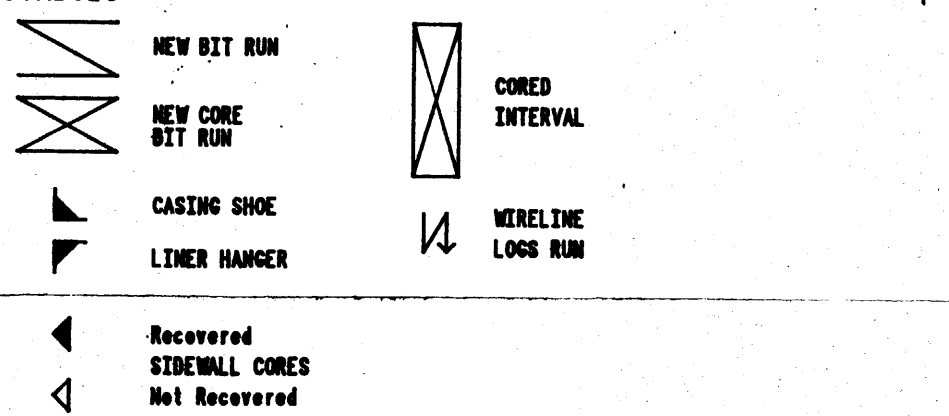
WELL CONFIGURATION			
BIT SIZE	MOLE DEPTH	CASING SIZE	SHOE DEPTH
914.0	185	762.0	185
444.5	325	346.0	321
911.0	743	244.0	738
216.0	1222		

LOGGING ENGINEERS
N. BROWN R. BATES
D. ANYOKU S. FISHER
A. ORAKWUOTU M. SMITH

DEPTH SCALE
1:2500

LOGGING UNIT No. 99

SYMBOLS



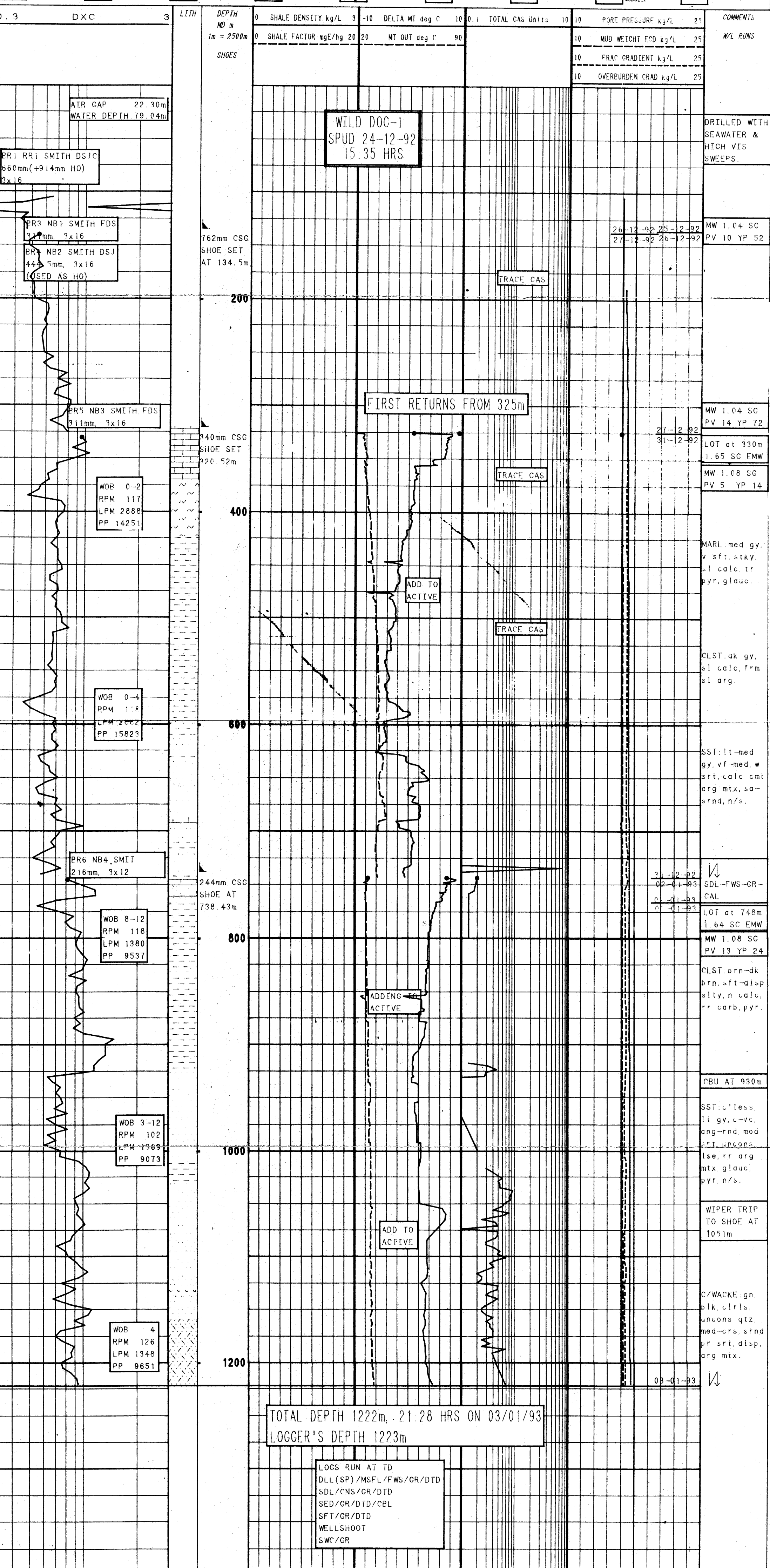
ABBREVIATIONS

NB NEW BIT	DS DIRECTIONAL SURVEY
NCS NEW CORE BIT	WT WIPER TRIP
RSD RE-RUN BIT	POH PULL OUT OF HOLE
CS CASING SHOE	RIN RUN IN TO HOLE
SWC SIDEWALL CORES	HOW WAIT ON WEATHER
EL ELECTRIC LOG	LAT LOGGED AFTER TRIP
WOB WEIGHT ON BIT	LCH LOST CIRCULATION MATERIAL
RPM REV PER MINUTE	DC DEPTH CORRECTION
PP PUMP PRESSURE	DST DRILL STEM TEST
SPM STROKES PER MINUTE	RMC REAMING
CR CIRCULATED RETURN	RL NEW LOGS
PR POOR RETURNS	FR FLOW RATE
NR NO RETURNS	FC FLOW CHECK
TG TRIP GAS	DR BIT RUN
CG CONNECTION GAS	
WFG WIPER TRIP GAS	

MUD DATA

W WEIGHT	kg/L
MG MAG GRADIENT	psi/ft
V FUNNEL VISCOSITY	s/L
PV PLASTIC VISCOSITY	Pa.s
YP YIELD POINT	Pa
GEL GEL STRENGTH	Pa
pH ACIDITY	
F FILTRATE	cm ³ /30
CK CAKE THICKNESS	in/30
S SALINITY	kg/m ³
SD SAND CONTENT	%
O OIL CONTENT	%
WL WATER LOSS	cm ³ /30
SOL SOLIDS CONTENT	%
PF FILTRATE ALKALINITY	%
GYP GYPSUM CONTENT	kg/m ³

CLAY (CLAYSTONE)	LITHIFICATION SYMBOL (e.g. CLST)	LIMESTONE	ANHYDRITE	GREYWACK	ARCILLACEOUS	CALCAREOUS	PITUMINOUS	FOSFELS
SILT (SILTSTONE)	SHALE	DOLomite	GYPsum	TUFF	SILTY	DOLomITIC	MICACEOUS	SHELL FRAGMENTS
SAND (SANDSTONE)	BRECCIA	MARL	HALITE	VOLCANIC AGGLOMERATE	SANDY	FLAUOMITIC	PLANT REMAINS	FORAMINIFERA
GRAVEL (CONGLOMERATE)	COAL AND OTHER CARBONACEOUS ROCK		FERRONACEOUS	EXTRUSIVE TONEOUS ROCK	QUARTZITIC CEMENT	PYRITIC	CONCRETIONS AND NODULES	POODS



0.3 DXC 3 LITH	DEPTH MD m 1m = 2500m	SHOES	0 SHALE DENSITY kg/L 3 -10 DELTA MT deg C 10 0.1 TOTAL GAS Units 10 10 PORE PRESSURE kg/L 25 COMMENTS
			0 SHALE FACTOR mgE/hg 20 20 MT OUT deg C 90 10 MUD WEIGHT FCD kg/L 25 W/L RUNS
			10 FRAC GRADIENT kg/L 25
			10 OVERBURDEN CRAD kg/L 25