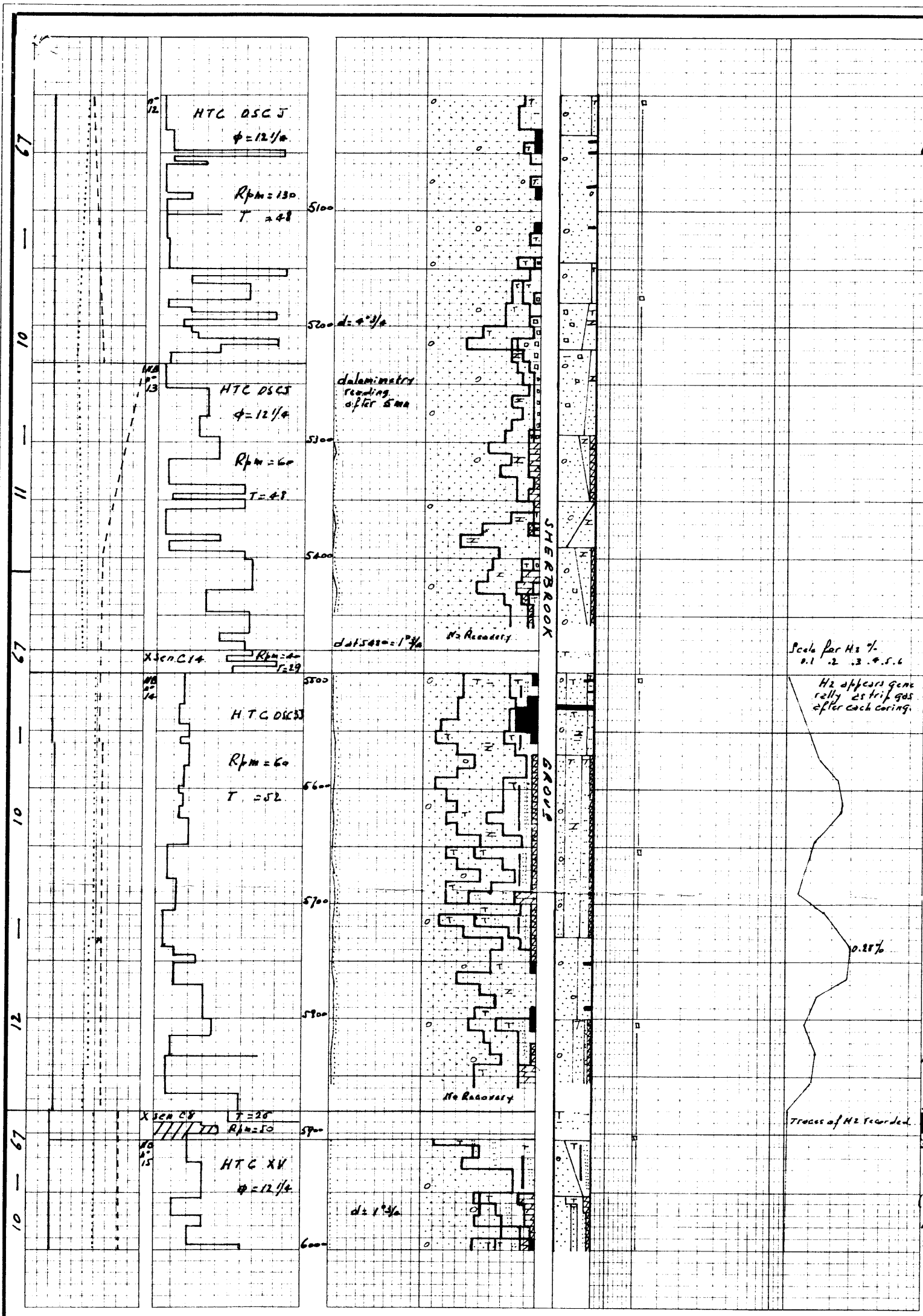


VOLUTA-1



4976'-5140'
 Qz S, lsa, clear, (wh-milky), mainly crs-crs, in part f-m, srt-(srt), (ang) (hd), occ (ang), trace of Pyr coating
 Minor Qz sst wh-ltgy, dense, f-m, loc crs, hd-hd, with Gls grains, C specks and laminations, Pyr, set in cl, dol, matrix tight. Cement is sometimes pyr.
 Traces: C - Pyr: large or aggregates
 Clst silicified.

5140'-5220'
 Qz S, lsa, f-crs, loc gran, as ab.
 Qz sst as above - % increasing towards the base. At 5190' the sst is in part buff, Gls grains are more abundant matrix dolomite - siderite?
 Clst gy - ltgy, (hd) - hd, S pyr (carb) C streaks, in part grading to Sstst Calc-dolomite - in part hd, silic, pyr
 Pyr: loose or aggregates

5220'-5460'
 Qz S lsa, f-crs, loc f, gran, clear (wh-milky) (yellow) between 5330-5360 partly lmn stained, (ang)-(rd), srt-(srt)
 Qz sst ltgy-wh, f-m, loc crs, (hd) - hd, dnt, (ang)(rd), with Gls grains C streaks, pyr, occ gy lithic grains, set in a (cl), dol-dol cmt hgt.
 Dol streaks, lt brn-buff hd, hd, massive, compact, with quartz inclusions, Gls grain very abundant, Siderite and grading to siderite.
 From 5400 to 5460: Tr up to 10% Clst: dk
 5480: S, srt, sst, (carb), C streaks, occ Gls
 Core n7 Rec: 23% Pyr: loose or aggregates throughout the section

5500'-5580': Core 7 Recovered 48%
 Qz sst, dnt, f, srt, ang-(rd), sft, wh cmt, (mic), carb, containing laminae of Sstst mgy, sft carb, cl, C blk, brittle, pyr, Clst; srt. Sst is rippled marked, contains small scale cross-bedding - some burrows in silty parts. On bottom 1/2" thick layer of Dol occurs: pink-beige, xln, glc hd.
 H2 appears generally as strip gas after each coring.

5580'-5740' Interbedded
 Qz sst ltgy-wh as in core n7 cmt cl, (dol).
 Qz S lsa, clear, (wh-milky) (yellow), f-crs, loc gran - blk, occ f, (ang)-(rd), loc ang, srt-(srt) - matrix probably washed out.
 Clst-Sstst: dkgy-br, sft carb, sst, locally 5 to 5, with Gls grains, C streaks (up to 20%) and Dol streaks throughout this section

5740'-5880'
 Qz S, lsa as above
 Qz sst: ltgy-wh, dense, srt, hd, f-m, with occ Gls grains, C streaks and specks rare grey lithic grains, rare mica, cmt cl, dol, c/lead tight.
 5815'-5880'
 Qz S lsa as above - Qz sst is becoming coarser, less sor.
 Core n8 Rec 79%
 Dol streaks - Dol is lt br-buff hd-hd, cmt glc, wh. Pyr traces from 5500-5880
 5880'-5905' Core n7 Recovered 19%
 Qz sst ltgy, f-crs, srt-(srt), ang-(ang), mod sph, mod hd, glc, mic, c/cmt, occurring as nest lenses & streaks in major lithology Sst, dkgy, s, grading into sst glc, cl, carb, with streaks of dolomite