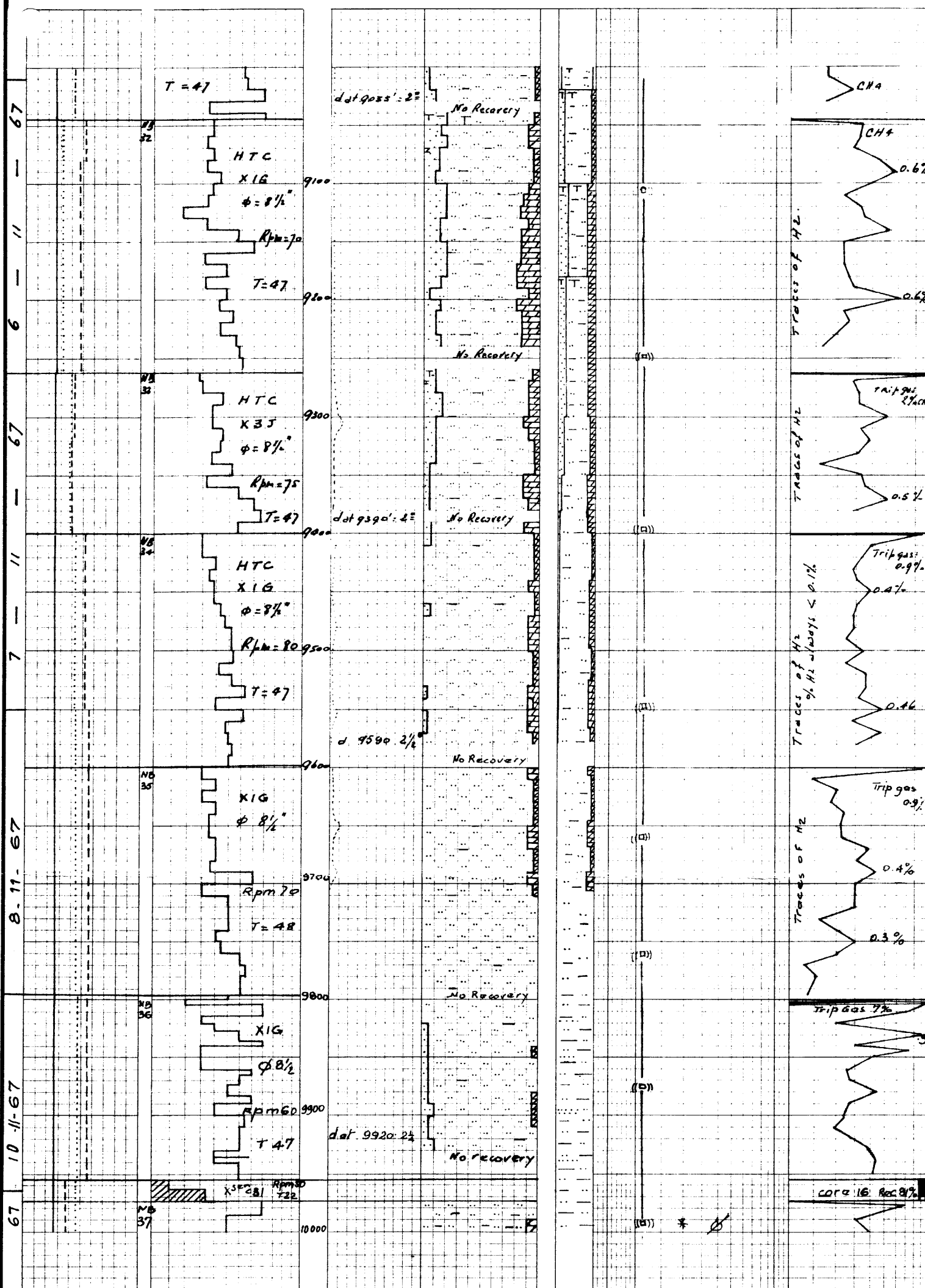


VOLUTA-1



From 9100' to 9200' the siltst becomes extremely sandy in f qz grains with (wh) fld grains, c specks and thin laminae, occ glc. - Gr-dol in f qz - s fld sst (wh) + lt (gr) + st (gr) + sps, cl loc calc dol cmt. Lt (gr) f lithic granules increasing progressively. Streaks of dol, brn buff, loc beige mainly xln, hd loc s and glc, and calc. homaceous specks. Contains calcareous material and wh xln calcite veins. Occ traces of shell fragments and rare pyr.

9200' - 9600': Siltstone as the above units

Siltst, dk gy, dns cons, cl (carb), with abundant (wh) - (brn) fld grains, rare (gr) lithics, abundant c specks and thin laminae, in part glc (m-crs glc grains), in part (pyr) f xln patches of pyr. Rare fossils: ferguson (Gastro pods, shell fragments, forams) sandy to extremely sandy, in f qz grains, grades often into f qz sst, with small patches and microinterbeds of qz - s fld sst f rarely (fine), cons, dns, sst, (wh) + (gr) + (gr) with abundant fld grains, occ c streaks, (gr) lithics, occ glc, (mic) set in cl cmt, cmt is in part dol-dol. - Matrix washes out in part.

Dol streaks, brn, rarely beige, hd xln compact, locally sandy glc, with occ carbonaceous specks. Contains often wh - brn xln calcite veins (on fractures) and calcareous material. From 9520' to bottom traces up to 5% clst litgy, sst, sst, (carb).

Traces calcite xln, often associated with dol.

DEPT. NAT. RES & ENV



PE600399

From 9600' to 9720' siltstone as above units

siltst dk gy, dns cons. Folds and some little's (carb). Sandy, some lithic grains, glau and pyr. Shell fragments.

Dol dk brn sometimes beige hd xln compact, often streaks of calcite. Traces of xln calcite

From 9720 - 9796

siltst a.o. becoming sandy only traces of dol and cal.

Siltst, dk gy, dns, s-s, Qtz, fld, lit grn, glc, carb specks, laminae, pyr, (mic), (calc)