

SNAIL NO 1
COMPOSITE WELL LOG

DEPT. NAT. RES. & ENV.
PE900300

VIC. / V.A.
TOMBAY EMERALD-ATWAY BASIN

LOCATION: Latitude 38° 53' 50" S
Longitude 144° 18' 02" E
ELEVATION: Sea Floor - 250 feet
(from sea level) 400 feet

DATE DRILLING COMMENCED: 26-11-1972
DATE DRILLING COMPLETED: 7-12-1972
TOTAL DEPTH: (Ditto) 4051 feet

WELL STATUS: Dry Plugged and Abandoned

WELL HEAD FITTINGS: None
DRILLING CONTRACTOR: Global Marine Africa Pty Ltd
Size (inches): Setting Depth (feet): No. of Sacks
12 706 1150
13 706 1100

CEMENT PLUGS:
From feet to feet No. of sacks
No. 1 1826 1315 250
No. 2 420 820 150

LEGEND

LITHOLOGY

- SANDSTONE
- SILTSTONE
- LAYSTONE
- CALCARENITE
- LIMESTONE
- SOLINITA
- SHALE
- COAL
- MARL
- BIOCLASTICS

ACCESSORIES

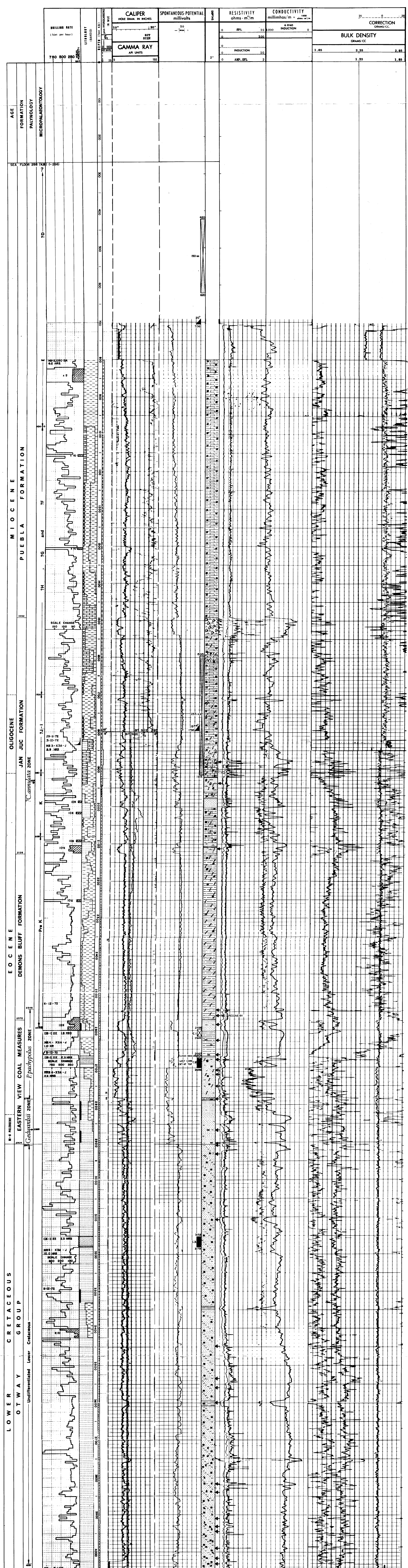
- ANKERITE
- SULFIDES
- ANGLESITE
- BENTONITE
- CAICARONITE
- PIRITE
- COLOMITE
- MICA
- CHERT
- CARBONACEOUS MATTER
- CASTE CRISTALS
- FOSSILIFEROUS
- GLAUCONITE
- FORAM
- QUARTZ CRYSTALS
- OPSIDOM
- KADOLITE
- IRON GRANULES

WELL SYMBOLS

- SIDE WALL CORE
- PLUGGED INTERVAL
- CASING SHOE
- CORE

WIRE LINE LOGGING CHART

TYPE OF LOG	SP-15/15	SP-15/15	DICAL-100	DICAL-100	WDT	CAL/PAL
Run no	1	2	1	2	1	1
Date	29-11-72	01-12-72	30-11-72	01-12-72	2-12-72	12-12-72
First reading	1820 feet	1842 feet	1820 feet	1820 feet	1842 feet	1840 feet
Last reading	207 feet	1794 feet	207 feet	1794 feet	1794 feet	1795 feet
Casing logged	207 feet	1794 feet	207 feet	1794 feet	1794 feet	1795 feet
Bit size	18 inch	12 1/2 inch	18 inch	12 1/2 inch	12 1/2 inch	12 1/2 inch
Mud nature	0-1800 feet Sea water	1800-1832 feet Fresh water/Bentonite	1832-1850 feet Sea water/Bentonite	1850-1852 feet Fresh water/Bentonite	1852-1855 feet Sea water/Bentonite	1855-1857 feet Fresh water/Bentonite
Mud resistivity	0-1800 feet 1.00 ohm-m	1800-1832 feet 1.00 ohm-m	1832-1850 feet 1.00 ohm-m	1850-1852 feet 1.00 ohm-m	1852-1855 feet 1.00 ohm-m	1855-1857 feet 1.00 ohm-m
Log scales	0-1000	0-1000	0-1000	0-1000	0-1000	0-1000



TO DRILLER 4051
TO SCHUMBERGER 4047
BIM LOG INTERVAL 4047

CALIPER
HOLE DIAM. IN INCHES
8" SIZE 18"

HEMATITE PETROLEUM PTY. LTD.
Snail No.1 - Composite Well Log.