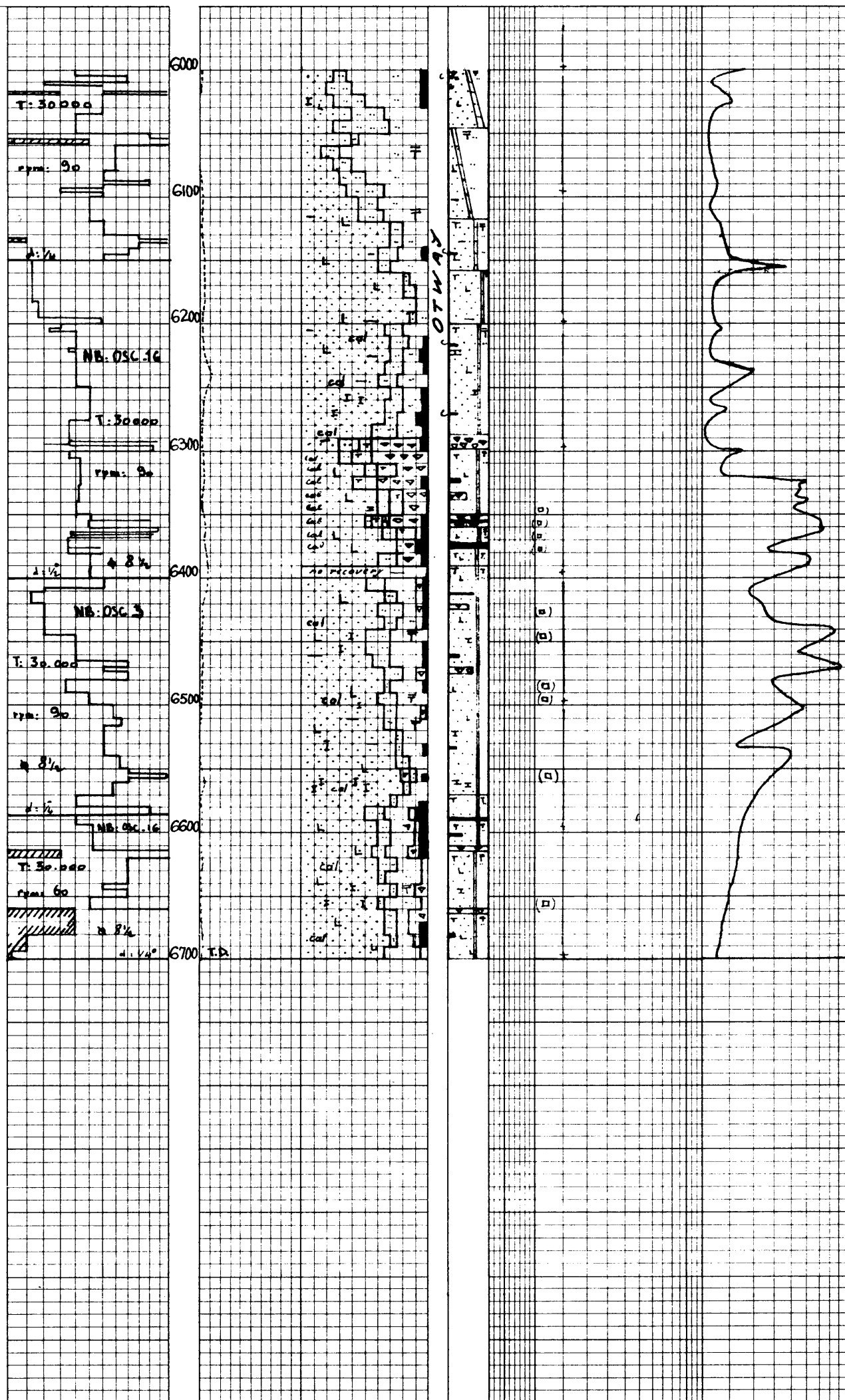


27.7.67

28 - 7-67

29.7.67



6000-6038
Interbedded
sst f-f m in parts (sort) lit
chloritic occa lightgy (gn) with
calc cmt (Por)
slt mic a.a.
clst mostly gn occa br coaly
slty
C: thin stringers

6038-6120
Interbedded
sst f grading → m
slt x clst a.a.

6120-6290
Interbedded
sst a.a. m qz cmt. occa less
chloritic and no por when calc
cmt.
Smaller slt x clst % than above

6290-6330. Interbedded
sst a.a. (Por)
slt a.a. mic
clst mainly gn harder than above
silicified in parts.
cht off wh hard alt tuff?
Porcellanite? C.

6330-6390
sst a.a. occa more cons
interlocked in parts lit mic
(Biot?)
clst silicified in places.
C x cht a.a.

Calc mass. micro Xln 2) wh Xln veins
6390-6570
sst gn Qz on top m → f fat 6450
fri lit mic (biot?) calc cmt in part
when gy. From 6490 more chloritic
cons occa gy (gn) when calc cmt
(6520') with brickred volc gns
slt x clst a.a.
note: traces of cht caving?

6570-6700
sst gn some m mainly f when
chloritic. sort. Qz cmt cons
red volc? gns ((Por))
sst beige (gn) m. calc cmt lit
(por)
sst m-f dirty gy. ((sort)) lit
slt a.a. gy mic
clst gy (gn), mainly hard, conch
cht as between 6290-6330
C.
note: calc appears micro Xln
when cmting sst and Xln
when free.

