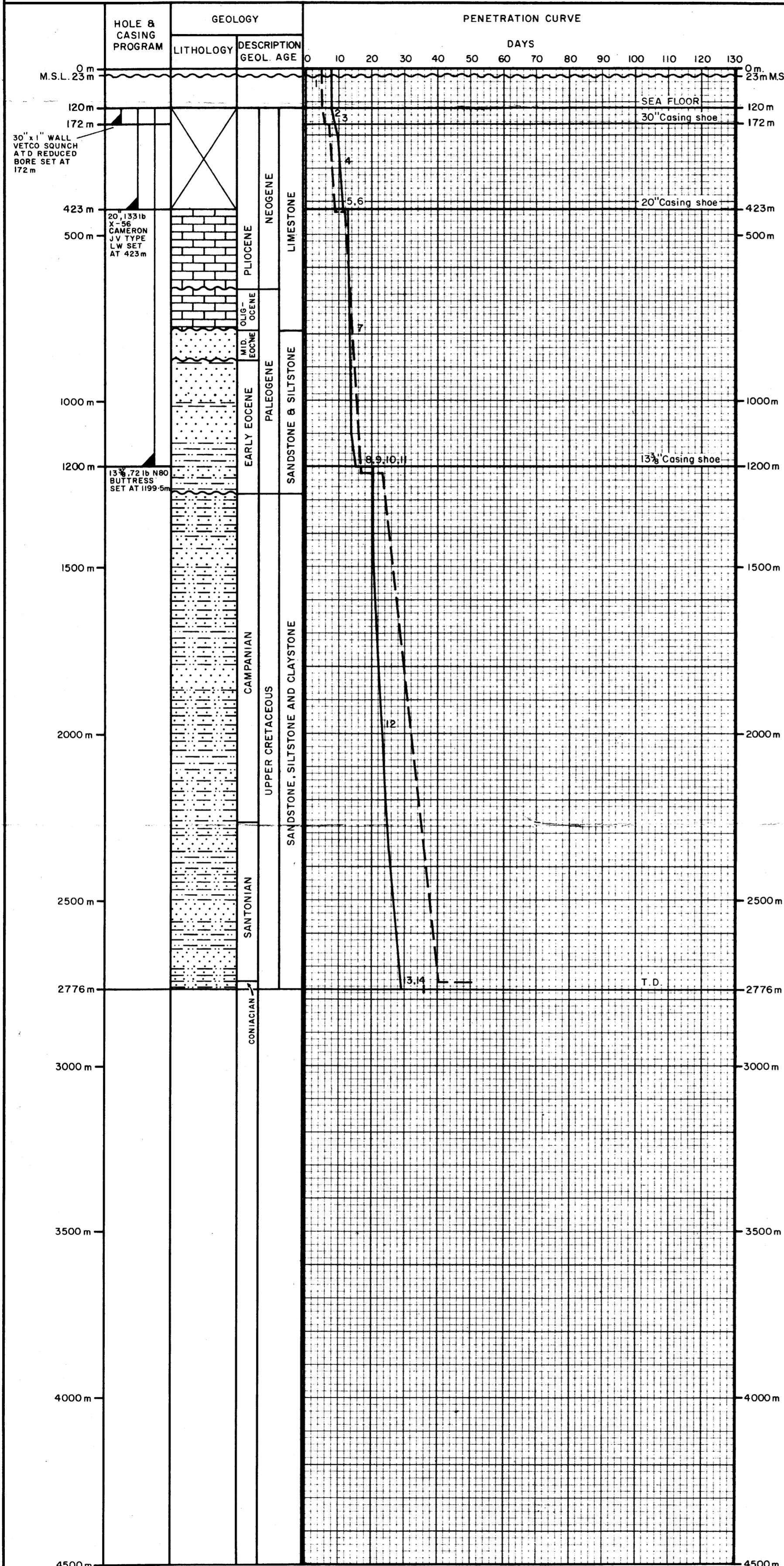


PHILLIPS AUSTRALIAN OIL CO.
OPERATION SUMMARY
DISCOVERY BAY No.1



W 783 DISCOVERY BAY-1 W.C.R.



WELL NAME: DISCOVERY BAY No.1
 LOCATION: Lat. 38° 24' 42.9030" S
 Long. 141° 04' 21.1006" E
 OPERATOR: PHILLIPS AUSTRALIAN OIL CO.
 CONTRACTOR: DIAMOND 'M' COMPANY
 DRILLING UNIT: DIAMOND 'M' EPOCH
 WATER DEPTH: 97 METRES
 TOTAL DEPTH: 2776 METRES
 R/T TO M.S.L.: 23 METRES
 R/T TO SEABED: 120 METRES

THIRD-PARTY SERVICES
 MUD ENGINEERING: BAROID
 MUD LOGGING: GEOSERVICES
 CEMENTING/DST: HALLIBURTON
 ELECTRIC LOGGING: SCHLUMBERGER
 PRODUCTION TESTING: FLOPETROL
 HELICOPTERS: OKANAGAN
 POSITIONING: O.N.A.
 FIXED WING: COMMERCIAL
 SUPPLY/WORK VESSELS: AOS

PREPARED BY: D.A. WATTS
 DATE: NOVEMBER 1982

- LEGEND**
1. MOVE IN AND SET ANCHORS
 2. SPUD AND DRILL 36" HOLE
 3. RUN AND CEMENT 30" CASING
 4. DRILL 26" HOLE
 5. R&C 20" CASING
 6. RUN RISER, BOP; TEST BOP
 7. DRILL 12 1/4" HOLE
 8. LOG
 9. UNDERREAM HOLE TO 17 1/2'
 10. R&C 13 3/8" CASING
 11. TEST BOP AND CASING
 12. DRILL 12 1/2" HOLE
 13. LOG
 14. P&A, PICK UP ANCHORS

RECEIVED RIG AT	2345	13-9-82
RIG ON LOCATION AT	0930	16-9-82
SPUDED AT	1800	21-9-82
RELEASED AT	0035	19-10-82

