

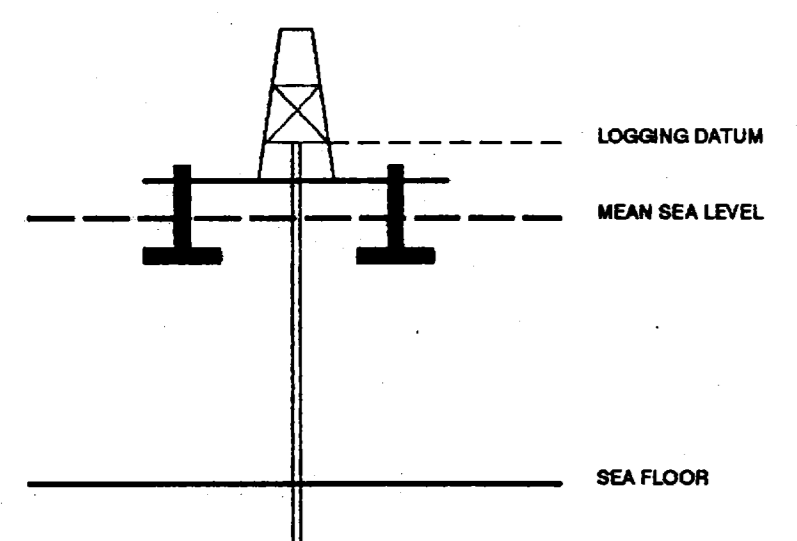
VERTICAL SEISMIC PROFILE



ZERO OFFSET VSP PLOT 5
WAVESHAPING & CORRIDOR STACK

Company: BHP PETROLEUM PTY. LTD.
Well: CHAMPION-1
Field: WILDCAT
Country: AUSTRALIA
Reference No: SYJ-561142/561143 Interval: 1845.00 to 1220.00
Date Logged: 15 AUG. 1995 Date Processed: 17 AUG 1995
Location: 038 32' 33.054" S 142 23' 18.066" E
Elevations: KB: 25.30 DF: 25.00 GL: -54.00
Permanent Datum: MSL Depth Units: METRES
FIELD RECORDING: Engineer: R. JONSSON Location: Program Version: 700-427
COMPUTATION: Analyst: S. TCHERKASHNEV Centre: SYJ Baseline: 20.6

ELEVATION ABOVE MEAN SEA LEVEL
Logging Datum: 25.30
Seismic Reference Datum: 0.00



Total Number of Levels: 45
Depth Reference: SRD

Time Reference: SRD

Run	Date	Tool Type	Bit Size/Depth	Casing Size/Depth	Top Depth	Bottom Depth
1	15-07-95	DL	12.25 IN	13.3 IN/1216 M	1216 M	1866 M

VSP Run	Date	Gun Offset	Hydro. Offset	Gun Elevation	Hydro Elevation	Gun Azimuth	Hydro Azimuth
1	15-07-95	45 M	45 M	5 M BELOW MSL	10 M BELOW MSL	90 DEG	90 DEG

REMARKS

The well name, location and borehole reference data were furnished by the customer. All interpretations are opinions based on information supplied and are not intended to be used as a basis for any legal or contractual obligations. Schlumberger is not responsible for any loss, costs, damages or expenses incurred or sustained by anyone resulting from any interpretations made by any of our officers, agents or employees. These interpretations are also subject to change at our General Terms and Conditions as set out in our current Price Schedule.

* CORRIDOR STACK + AGC *
AGC WINDOW : 200 MS
POLARITY (S.E.G.) : REVERSE

* CORRIDOR STACK *
CORRIDOR WINDOW : 150 MS
POLARITY (S.E.G.) : REVERSE

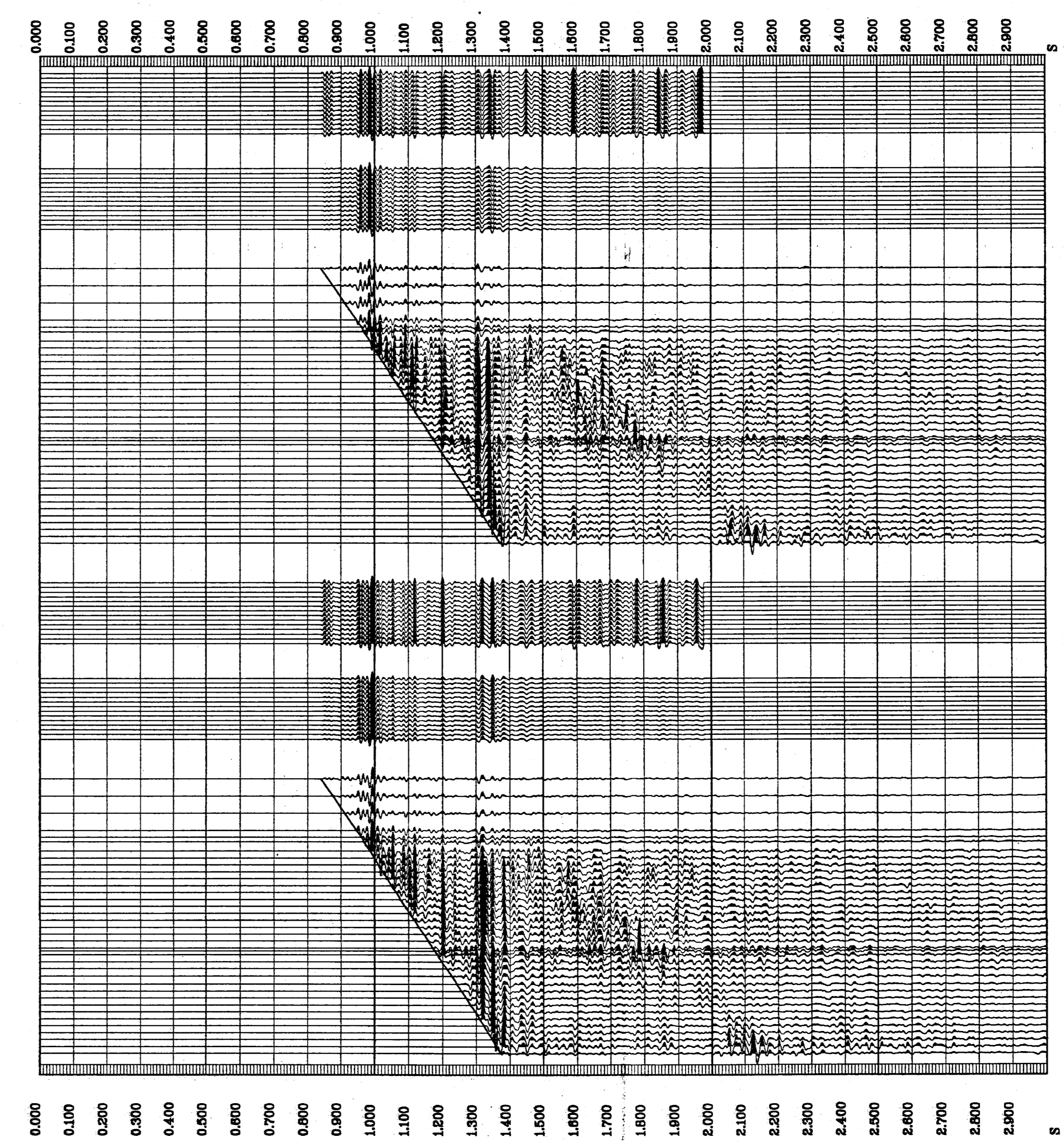
** WAVESHAPING **
WAVESHAPING DECONVOLUTION
ZERO PHASE
ENHANCED UPGOING WAVEFIELD
PROCESSING SEQUENCE:
MEDIAN STACK APPLIED
STATIC CORRECTION TO MSL: 6.56 MS
BAND PASS FILTER : 7-95 HZ
NORMALISATION GATE : 100 MS
TIME VARYING GAIN : (T/TO)**1.00
DOWNGOING WAVEFIELD SUBTRACTION
WAVESHAPING DECONVOLUTION:
7-95 HZ ZERO PHASE WAVELET

* CORRIDOR STACK + AGC *
AGC WINDOW : 200 MS
POLARITY (S.E.G.) : NORMAL

* CORRIDOR STACK *
CORRIDOR WINDOW : 150 MS
POLARITY (S.E.G.) : NORMAL

** WAVESHAPING **
WAVESHAPING DECONVOLUTION
ZERO PHASE
ENHANCED UPGOING WAVEFIELD
PROCESSING SEQUENCE:
MEDIAN STACK APPLIED
STATIC CORRECTION TO MSL: 6.56 MS
BAND PASS FILTER : 7-95 HZ
NORMALISATION GATE : 100 MS
TIME VARYING GAIN : (T/TO)**1.00
DOWNGOING WAVEFIELD SUBTRACTION
WAVESHAPING DECONVOLUTION:
7-95 HZ ZERO PHASE WAVELET

RAW DEPTH M	TRUE VERTICAL DEPTH MSL M	TRANSIT TIME S	LEVEL NO
0.0	0.0	0.000	0
0.0	0.0	0.000	0
0.0	0.0	0.000	0
0.0	0.0	0.000	0
0.0	0.0	0.000	0
0.0	0.0	0.000	0
1480.0	1454.7	0.573	21
1090.0	1064.7	0.420	39
1090.0	1064.7	0.438	38
1130.0	1104.7	0.456	37
1180.0	1154.7	0.474	36
1230.0	1204.7	0.490	35
1240.0	1214.7	0.494	34
1250.0	1224.7	0.498	33
1260.0	1234.7	0.502	32
1270.0	1244.7	0.506	31
1280.0	1254.7	0.510	30
1290.0	1264.7	0.514	29
1300.0	1274.7	0.518	28
1310.0	1284.7	0.522	27
1320.0	1294.7	0.526	26
1330.0	1304.7	0.530	25
1340.0	1314.7	0.534	24
1350.0	1324.7	0.538	23
1360.0	1334.7	0.542	22
1370.0	1344.7	0.546	21
1380.0	1354.7	0.550	20
1390.0	1364.7	0.554	19
1400.0	1374.7	0.558	18
1410.0	1384.7	0.562	17
1420.0	1394.7	0.566	16
1430.0	1404.7	0.570	15
1440.0	1414.7	0.574	14
1450.0	1424.7	0.578	13
1460.0	1434.7	0.582	12
1470.0	1444.7	0.586	11
1480.0	1454.7	0.590	10
1490.0	1464.7	0.594	9
1500.0	1474.7	0.598	8
1510.0	1484.7	0.602	7
1520.0	1494.7	0.606	6
1530.0	1504.7	0.610	5
1540.0	1514.7	0.614	4
1550.0	1524.7	0.618	3
1560.0	1534.7	0.622	2
1570.0	1544.7	0.626	1
1580.0	1554.7	0.630	0
1590.0	1564.7	0.634	0
1600.0	1574.7	0.638	0
1610.0	1584.7	0.642	0
1620.0	1594.7	0.646	0
1630.0	1604.7	0.650	0
1640.0	1614.7	0.654	0
1650.0	1624.7	0.658	0
1660.0	1634.7	0.662	0
1670.0	1644.7	0.666	0
1680.0	1654.7	0.670	0
1690.0	1664.7	0.674	0
1700.0	1674.7	0.678	0
1710.0	1684.7	0.682	0
1720.0	1694.7	0.686	0
1730.0	1704.7	0.690	0
1740.0	1714.7	0.694	0
1750.0	1724.7	0.698	0
1760.0	1734.7	0.702	0
1770.0	1744.7	0.706	0
1780.0	1754.7	0.710	0
1790.0	1764.7	0.714	0
1800.0	1774.7	0.718	0
1810.0	1784.7	0.722	0
1820.0	1794.7	0.726	0
1830.0	1804.7	0.730	0
1840.0	1814.7	0.734	0
1850.0	1824.7	0.738	0
1860.0	1834.7	0.742	0
1870.0	1844.7	0.746	0
1880.0	1854.7	0.750	0
1890.0	1864.7	0.754	0
1900.0	1874.7	0.758	0
1910.0	1884.7	0.762	0
1920.0	1894.7	0.766	0
1930.0	1904.7	0.770	0
1940.0	1914.7	0.774	0
1950.0	1924.7	0.778	0
1960.0	1934.7	0.782	0
1970.0	1944.7	0.786	0
1980.0	1954.7	0.790	0
1990.0	1964.7	0.794	0
2000.0	1974.7	0.798	0
2010.0	1984.7	0.802	0
2020.0	1994.7	0.806	0
2030.0	2004.7	0.810	0
2040.0	2014.7	0.814	0
2050.0	2024.7	0.818	0
2060.0	2034.7	0.822	0
2070.0	2044.7	0.826	0
2080.0	2054.7	0.830	0
2090.0	2064.7	0.834	0
2100.0	2074.7	0.838	0
2110.0	2084.7	0.842	0
2120.0	2094.7	0.846	0
2130.0	2104.7	0.850	0
2140.0	2114.7	0.854	0
2150.0	2124.7	0.858	0
2160.0	2134.7	0.862	0
2170.0	2144.7	0.866	0
2180.0	2154.7	0.870	0
2190.0	2164.7	0.874	0
2200.0	2174.7	0.878	0
2210.0	2184.7	0.882	0
2220.0	2194.7	0.886	0
2230.0	2204.7	0.890	0
2240.0	2214.7	0.894	0
2250.0	2224.7	0.898	0
2260.0	2234.7	0.902	0
2270.0	2244.7	0.906	0
2280.0	2254.7	0.910	0
2290.0	2264.7	0.914	0
2300.0	2274.7	0.918	0
2310.0	2284.7	0.922	0
2320.0	2294.7	0.926	0
2330.0	2304.7	0.930	0
2340.0	2314.7	0.934	0
2350.0	2324.7	0.938	0
2360.0	2334.7	0.942	0
2370.0	2344.7	0.946	0
2380.0	2354.7	0.950	0
2390.0	2364.7	0.954	0
2400.0	2374.7	0.958	0
2410.0	2384.7	0.962	0
2420.0	2394.7	0.966	0
2430.0	2404.7	0.970	0
2440.0	2414.7	0.974	0
2450.0	2424.7	0.978	0
2460.0	2434.7	0.982	0
2470.0	2444.7	0.986	0
2480.0	2454.7	0.990	0
2490.0	2464.7	0.994	0
2500.0	2474.7	0.998	0
2510.0	2484.7	1.002	0
2520.0	2494.7	1.006	0
2530.0	2504.7	1.010	0
2540.0	2514.7	1.014	0
2550.0	2524.7	1.018	0
2560.0	2534.7	1.022	0
2570.0	2544.7	1.026	0
2580.0	2554.7	1.030	0
2590.0	2564.7	1.034	0
2600.0	2574.7	1.038	0
2610.0	2584.7	1.042	0
2620.0	2594.7	1.046	0
2630.0	2604.7	1.050	0
2640.0	2614.7	1.054	0
2650.0	2624.7	1.058	0
2660.0	2634.7	1.062	0
2670.0	2644.7	1.066	0
2680.0	2654.7	1.070	0
2690.0	2664.7	1.074	0
2700.0	2674.7	1.078	0
2710.0	2684.7	1.082	0
2720.0	2694.7	1.086	0
2730.0	2704.7	1.090	0
2740.0	2714.7	1.094	0
2750.0	2724.7	1.098	0
2760.0	2734.7	1.102	0
2770.0	2744.7	1.106	0
2780.0	2754.7	1.110	0
2790.0	2764.7	1.114	0
2800.0	2774.7	1.118	0
2810.0	2784.7	1.122	0
2820.0	2794.7	1.126	0
2830.0	2804.7	1.130	0
2840.0	2814.7	1.134	0
2850.0	2824.7	1.138	0
2860.0	2834.7	1.142	0
2870.0	2844.7	1.146	0
2880.0	2854.7	1.150	0
2890.0	2864.7	1.154	0
2900.0	2874.7	1.158	0
2910.0	2884.7	1.162	0
2920.0	2894.7	1.166	0
2930.0	2904.7	1.170	0
2940.0	2914.7	1.174	0
2950.0	2924.7	1.178	0
2960.0	2934.7	1.182	0
2970.0	2944.7	1.186	0
2980.0	2954.7	1.190	0
2990.0	2964.7	1.194	0
3000.0	2974.7	1.198	0



COMPANY BHP PETROLEUM PTY. LTD.
FIELD WILDCAT
WELL CHAMPION-1
COUNTRY AUSTRALIA

