



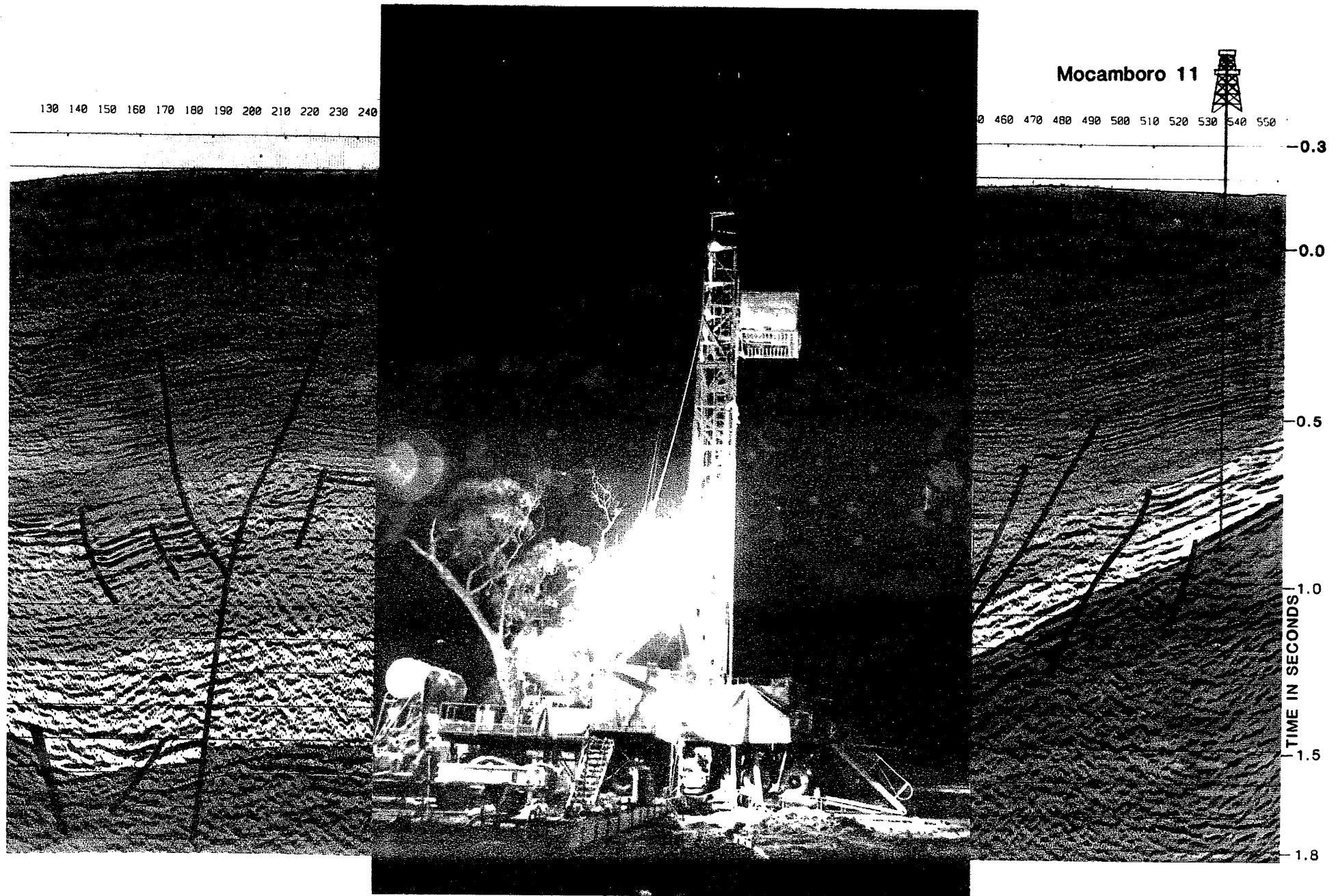
# Mocamboro No. 11

## Well Completion Report

DEPT. NAT. RES & ENV



PE906590



Geological Survey of Victoria  
Basin Studies



**VOL. II: ENCLOSURES**

**1991**



**GEOLOGICAL SURVEY OF  
VICTORIA**

**BASIN STUDIES**

**Mocamboro 11**

---

**Well completion report**

Unpublished report No.1991/65

Volume 2  
Enclosures



Department of  
Manufacturing  
and Industry  
Development

Prepared by:  
Ahmad Tabassi  
Cliff Menhennitt

# ENCLOSURE

# I

## COMPOSITE WELL LOG

PE 604669

PE604669

This is an enclosure indicator page.  
The enclosure PE604669 is enclosed within the  
container PE906590 at this location in this  
document.

The enclosure PE604669 has the following characteristics:

- ITEM\_BARCODE = PE604669
- CONTAINER\_BARCODE = PE906590
  - NAME = Composite Well Log
  - BASIN = OTWAY
  - PERMIT = PEP118
  - TYPE = WELL
  - SUBTYPE = COMPOSITE\_LOG
- DESCRIPTION = Composite Well Log (enclosure 1 of WCR)  
for Mocamboro-11
- REMARKS =
- DATE\_CREATED = 31/10/1991
- DATE\_RECEIVED =
  - W\_NO = W1032A
  - WELL\_NAME = MOCAMBORO-11
- CONTRACTOR =
- CLIENT\_OP\_CO = GSV

(Inserted by DNRE - Vic Govt Mines Dept)

# ENCLOSURE II

**MUD LOG**

PE 604670

PE604670

This is an enclosure indicator page.  
The enclosure PE604670 is enclosed within the  
container PE906590 at this location in this  
document.

The enclosure PE604670 has the following characteristics:

- ITEM\_BARCODE = PE604670
- CONTAINER\_BARCODE = PE906590
- NAME = Mud Log
- BASIN = OTWAY
- PERMIT = PEP118
- TYPE = WELL
- SUBTYPE = MUD\_LOG
- DESCRIPTION = Mud Log for Mocamboro-11(enclosure 2 of  
WCR)
- REMARKS =
- DATE\_CREATED = 03/09/1990
- DATE\_RECEIVED =
- W\_NO = W1032A
- WELL\_NAME = MOCAMBORO-11
- CONTRACTOR =
- CLIENT\_OP\_CO = GSV

(Inserted by DNRE - Vic Govt Mines Dept)

# ENCLOSURE

## III

### WIRELIN LOGS

PE 604671 - 679

PE604671

This is an enclosure indicator page.  
The enclosure PE604671 is enclosed within the  
container PE906590 at this location in this  
document.

The enclosure PE604671 has the following characteristics:

- ITEM\_BARCODE = PE604671
- CONTAINER\_BARCODE = PE906590
  - NAME = Laterolog - Sonic Log
  - BASIN = OTWAY
  - PERMIT = PEP118
  - TYPE = WELL
  - SUBTYPE = WELL\_LOG
- DESCRIPTION = Laterolog - Sonic Log for Mocamboro-11,  
1:200 (enclosure III-1 of WCR)
- REMARKS =
- DATE\_CREATED = 12/09/1990
- DATE\_RECEIVED =
- W\_NO = W1032A
- WELL\_NAME = MOCAMBORO-11
- CONTRACTOR = BPB
- CLIENT\_OP\_CO = GSV

(Inserted by DNRE - Vic Govt Mines Dept)



PE604672

This is an enclosure indicator page.  
The enclosure PE604672 is enclosed within the  
container PE906590 at this location in this  
document.

The enclosure PE604672 has the following characteristics:

- ITEM\_BARCODE = PE604672
- CONTAINER\_BARCODE = PE906590
- NAME = Laterolog - Sonic Log
- BASIN = OTWAY
- PERMIT = PEP118
- TYPE = WELL
- SUBTYPE = WELL\_LOG
- DESCRIPTION = Laterolog - Sonic Log for Mocamboro-11,  
1:500, (enclosure III-2 of WCR)
- REMARKS =
- DATE\_CREATED = 12/09/1990
- DATE\_RECEIVED =
- W\_NO = W1032A
- WELL\_NAME = MOCAMBORO-11
- CONTRACTOR = BPB
- CLIENT\_OP\_CO = GSV

(Inserted by DNRE - Vic Govt Mines Dept)

PE604673

This is an enclosure indicator page.  
The enclosure PE604673 is enclosed within the  
container PE906590 at this location in this  
document.

The enclosure PE604673 has the following characteristics:

- ITEM\_BARCODE = PE604673
- CONTAINER\_BARCODE = PE906590
- NAME = Laterolog - Gamma Ray - Caliper Log
- BASIN = OTWAY
- PERMIT = PEP118
- TYPE = WELL
- SUBTYPE = WELL\_LOG
- DESCRIPTION = Laterolog - Gamma Ray - Caliper Log for  
Mocamboro-11, 1:200, (enclosure III-3  
of WCR)
- REMARKS =
- DATE\_CREATED = 12/09/1990
- DATE\_RECEIVED =
- W\_NO = W1032A
- WELL\_NAME = MOCAMBORO-11
- CONTRACTOR = BPB
- CLIENT\_OP\_CO = GSV

(Inserted by DNRE - Vic Govt Mines Dept)

PE604674

This is an enclosure indicator page.  
The enclosure PE604674 is enclosed within the  
container PE906590 at this location in this  
document.

The enclosure PE604674 has the following characteristics:

ITEM\_BARCODE = PE604674  
CONTAINER\_BARCODE = PE906590  
    NAME = Laterolog - Gamma Ray - Caliper Log  
    BASIN = OTWAY  
    PERMIT = PEP118  
    TYPE = WELL  
    SUBTYPE = WELL\_LOG  
DESCRIPTION = Laterolog - Gamma Ray - Caliper Log for  
              Mocamboro-11, 1:500, (enclosure III-4  
              of WCR)  
REMARKS =  
DATE\_CREATED = 12/09/1990  
DATE\_RECEIVED =  
    W\_NO = W1032A  
    WELL\_NAME = MOCAMBORO-11  
CONTRACTOR = BPB  
CLIENT\_OP\_CO = GSV

(Inserted by DNRE - Vic Govt Mines Dept)

PE604675

This is an enclosure indicator page.  
The enclosure PE604675 is enclosed within the  
container PE906590 at this location in this  
document.

The enclosure PE604675 has the following characteristics:

- ITEM\_BARCODE = PE604675
- CONTAINER\_BARCODE = PE906590
- NAME = Compensated Sonic Log
- BASIN = OTWAY
- PERMIT = PEP118
- TYPE = WELL
- SUBTYPE = WELL\_LOG
- DESCRIPTION = Compensated Sonic Log for Mocamboro-11,  
1:200, (enclosure III-5 of WCR)
- REMARKS =
- DATE\_CREATED = 12/09/1990
- DATE\_RECEIVED =
- W\_NO = W1032A
- WELL\_NAME = MOCAMBORO-11
- CONTRACTOR = BPB
- CLIENT\_OP\_CO = GSV

(Inserted by DNRE - Vic Govt Mines Dept)

PE604676

This is an enclosure indicator page.  
The enclosure PE604676 is enclosed within the  
container PE906590 at this location in this  
document.

The enclosure PE604676 has the following characteristics:

- ITEM\_BARCODE = PE604676
- CONTAINER\_BARCODE = PE906590
  - NAME = Compensated Sonic Log
  - BASIN = OTWAY
  - PERMIT = PEP118
  - TYPE = WELL
  - SUBTYPE = WELL\_LOG
- DESCRIPTION = Compensated Sonic Log for Mocamboro-11,  
1:500, (enclosure III-6 of WCR)
- REMARKS =
- DATE\_CREATED = 12/09/1990
- DATE\_RECEIVED =
  - W\_NO = W1032A
  - WELL\_NAME = MOCAMBORO-11
  - CONTRACTOR = BPB
  - CLIENT\_OP\_CO = GSV

(Inserted by DNRE - Vic Govt Mines Dept)

PE604677

This is an enclosure indicator page.  
The enclosure PE604677 is enclosed within the  
container PE906590 at this location in this  
document.

The enclosure PE604677 has the following characteristics:

ITEM\_BARCODE = PE604677  
CONTAINER\_BARCODE = PE906590  
NAME = Density Neutron Log  
BASIN = OTWAY  
PERMIT = PEP118  
TYPE = WELL  
SUBTYPE = WELL\_LOG  
DESCRIPTION = Density Neutron Log for Mocamboro-11,  
1:200, (enclosure III-7 of WCR)  
REMARKS =  
DATE\_CREATED = 12/09/1990  
DATE\_RECEIVED =  
W\_NO = W1032A  
WELL\_NAME = MOCAMBORO-11  
CONTRACTOR = BPB  
CLIENT\_OP\_CO = GSV

(Inserted by DNRE - Vic Govt Mines Dept)

PE604678

This is an enclosure indicator page.  
The enclosure PE604678 is enclosed within the  
container PE906590 at this location in this  
document.

The enclosure PE604678 has the following characteristics:

- ITEM\_BARCODE = PE604678
- CONTAINER\_BARCODE = PE906590
  - NAME = Density Neutron Log
  - BASIN = OTWAY
  - PERMIT = PEP118
  - TYPE = WELL
  - SUBTYPE = WELL\_LOG
- DESCRIPTION = Density Neutron Log for Mocamboro-11,  
1:500, (enclosure III-8 of WCR)
- REMARKS =
- DATE\_CREATED = 12/09/1990
- DATE\_RECEIVED =
- W\_NO = W1032A
- WELL\_NAME = MOCAMBORO-11
- CONTRACTOR = BPB
- CLIENT\_OP\_CO = GSV

(Inserted by DNRE - Vic Govt Mines Dept)

PE604679

This is an enclosure indicator page.  
The enclosure PE604679 is enclosed within the  
container PE906590 at this location in this  
document.

The enclosure PE604679 has the following characteristics:

ITEM\_BARCODE = PE604679  
CONTAINER\_BARCODE = PE906590  
    NAME = Quick Look Interpretation Log  
    BASIN = OTWAY  
    PERMIT = PEP118  
    TYPE = WELL  
    SUBTYPE = WELL\_LOG  
DESCRIPTION = Quick Look Interpretation Log for  
              Mocamboro-11, 1:200, (enclosure III-9  
              of WCR)  
REMARKS =  
DATE\_CREATED = 12/09/1990  
DATE\_RECEIVED =  
    W\_NO = W1032A  
    WELL\_NAME = MOCAMBORO-11  
CONTRACTOR = BPB  
CLIENT\_OP\_CO = GSV

(Inserted by DNRE - Vic Govt Mines Dept)



# ENCLOSURE

## IV

### SCHEMATIC GEOLOGICAL CROSS-SECTION THROUGH MOCAMBORO NO.11

PE 906591

PE906591

This is an enclosure indicator page.  
The enclosure PE906591 is enclosed within the  
container PE906590 at this location in this  
document.

The enclosure PE906591 has the following characteristics:

ITEM\_BARCODE = PE906591  
CONTAINER\_BARCODE = PE906590  
    NAME = Geological Cross-Section  
    BASIN = OTWAY  
    PERMIT = PEP118  
    TYPE = WELL  
    SUBTYPE = CROSS\_SECTION  
    DESCRIPTION = Schematic Geological Cross-Section  
                  through Mocamboro-11 (enclosure IV of  
                  WCR)  
    REMARKS =  
    DATE\_CREATED = 31/10/1991  
    DATE\_RECEIVED =  
        W\_NO = W1032A  
        WELL\_NAME = MOCAMBORO-11  
    CONTRACTOR =  
    CLIENT\_OP\_CO = GSV

(Inserted by DNRE - Vic Govt Mines Dept)

# ENCLOSURE

## V

### LOG INTERPRETATION

PE604680 LOG

PE906592-604 RESULTS

PE604680

This is an enclosure indicator page.  
The enclosure PE604680 is enclosed within the  
container PE906590 at this location in this  
document.

The enclosure PE604680 has the following characteristics:

ITEM\_BARCODE = PE604680  
CONTAINER\_BARCODE = PE906590  
NAME = CPI Complex Lithology Log  
BASIN = OTWAY  
PERMIT = PEP118  
TYPE = WELL  
SUBTYPE = WELL\_LOG  
DESCRIPTION = CPI Complex Lithology Model Log for  
Mocamboro-11(enclosure V of WCR)  
REMARKS =  
DATE\_CREATED = 12/11/1991  
DATE\_RECEIVED =  
W\_NO = W1032A  
WELL\_NAME = MOCAMBORO-11  
CONTRACTOR = GAS AND FUEL EXPLORATION NL  
CLIENT\_OP\_CO = GSV

(Inserted by DNRE - Vic Govt Mines Dept)

PE906592

This is an enclosure indicator page.  
The enclosure PE906592 is enclosed within the  
container PE906590 at this location in this  
document.

The enclosure PE906592 has the following characteristics:

- ITEM\_BARCODE = PE906592
- CONTAINER\_BARCODE = PE906590
  - NAME = CPI Complex Lithology Results, 1 of 13
  - BASIN = OTWAY
  - PERMIT = PEP118
  - TYPE = WELL
  - SUBTYPE = NUM\_LOG
  - DESCRIPTION = CPI Complex Lithology Results, 1 of 13,  
Mocamboro-11
  - REMARKS =
  - DATE\_CREATED = 31/07/1991
  - DATE\_RECEIVED =
  - W\_NO = W1032A
  - WELL\_NAME = MOCAMBORO-11
  - CONTRACTOR = GAS AND FUEL EXPLORATION NL
  - CLIENT\_OP\_CO = GSV

(Inserted by DNRE - Vic Govt Mines Dept)

PE906593

This is an enclosure indicator page.  
The enclosure PE906593 is enclosed within the  
container PE906590 at this location in this  
document.

The enclosure PE906593 has the following characteristics:

- ITEM\_BARCODE = PE906593
- CONTAINER\_BARCODE = PE906590
  - NAME = CPI Complex Lithology Results, 2 of 13
  - BASIN = OTWAY
  - PERMIT = PEP118
  - TYPE = WELL
  - SUBTYPE = NUM\_LOG
- DESCRIPTION = CPI Complex Lithology Results, 2 of 13,  
Mocamboro-11
- REMARKS =
- DATE\_CREATED = 31/07/1991
- DATE\_RECEIVED =
  - W\_NO = W1032A
  - WELL\_NAME = MOCAMBORO-11
  - CONTRACTOR = GAS AND FUEL EXPLORATION NL
  - CLIENT\_OP\_CO = GSV

(Inserted by DNRE - Vic Govt Mines Dept)

PE906594

This is an enclosure indicator page.  
The enclosure PE906594 is enclosed within the  
container PE906590 at this location in this  
document.

The enclosure PE906594 has the following characteristics:

- ITEM\_BARCODE = PE906594
- CONTAINER\_BARCODE = PE906590
  - NAME = CPI Complex Lithology Results, 3 of 13
  - BASIN = OTWAY
  - PERMIT = PEP118
  - TYPE = WELL
  - SUBTYPE = NUM\_LOG
- DESCRIPTION = CPI Complex Lithology Results, 3 of 13,  
Mocamboro-11
- REMARKS =
- DATE\_CREATED = 31/07/1991
- DATE\_RECEIVED =
  - W\_NO = W1032A
  - WELL\_NAME = MOCAMBORO-11
  - CONTRACTOR = GAS AND FUEL EXPLORATION NL
  - CLIENT\_OP\_CO = GSV

(Inserted by DNRE - Vic Govt Mines Dept)

PE906595

This is an enclosure indicator page.  
The enclosure PE906595 is enclosed within the  
container PE906590 at this location in this  
document.

The enclosure PE906595 has the following characteristics:

- ITEM\_BARCODE = PE906595
- CONTAINER\_BARCODE = PE906590
  - NAME = CPI Complex Lithology Results, 4 of 13
  - BASIN = OTWAY
  - PERMIT = PEP118
  - TYPE = WELL
  - SUBTYPE = NUM\_LOG
- DESCRIPTION = CPI Complex Lithology Results, 4 of 13,  
Mocamboro-11
- REMARKS =
- DATE\_CREATED = 31/07/1991
- DATE\_RECEIVED =
  - W\_NO = W1032A
  - WELL\_NAME = MOCAMBORO-11
- CONTRACTOR = GAS AND FUEL EXPLORATION NL
- CLIENT\_OP\_CO = GSV

(Inserted by DNRE - Vic Govt Mines Dept)



PE906596

This is an enclosure indicator page.  
The enclosure PE906596 is enclosed within the  
container PE906590 at this location in this  
document.

The enclosure PE906596 has the following characteristics:

- ITEM\_BARCODE = PE906596
- CONTAINER\_BARCODE = PE906590
  - NAME = CPI Complex Lithology Results, 5 of 13
  - BASIN = OTWAY
  - PERMIT = PEP118
  - TYPE = WELL
  - SUBTYPE = NUM\_LOG
- DESCRIPTION = CPI Complex Lithology Results, 5 of 13,  
Mocamboro-11
- REMARKS =
- DATE\_CREATED = 31/07/1991
- DATE\_RECEIVED =
- W\_NO = W1032A
- WELL\_NAME = MOCAMBORO-11
- CONTRACTOR = GAS AND FUEL EXPLORATION NL
- CLIENT\_OP\_CO = GSV

(Inserted by DNRE - Vic Govt Mines Dept)

PE906597

This is an enclosure indicator page.  
The enclosure PE906597 is enclosed within the  
container PE906590 at this location in this  
document.

The enclosure PE906597 has the following characteristics:

- ITEM\_BARCODE = PE906597
- CONTAINER\_BARCODE = PE906590
- NAME = CPI Complex Lithology Results, 6 of 13
- BASIN = OTWAY
- PERMIT = PEP118
- TYPE = WELL
- SUBTYPE = NUM\_LOG
- DESCRIPTION = CPI Complex Lithology Results, 6 of 13,  
Mocamboro-11
- REMARKS =
- DATE\_CREATED = 31/07/1991
- DATE\_RECEIVED =
- W\_NO = W1032A
- WELL\_NAME = MOCAMBORO-11
- CONTRACTOR = GAS AND FUEL EXPLORATION NL
- CLIENT\_OP\_CO = GSV

(Inserted by DNRE - Vic Govt Mines Dept)

PE906598

This is an enclosure indicator page.  
The enclosure PE906598 is enclosed within the  
container PE906590 at this location in this  
document.

The enclosure PE906598 has the following characteristics:

- ITEM\_BARCODE = PE906598
- CONTAINER\_BARCODE = PE906590
- NAME = CPI Complex Lithology Results, 7 of 13
- BASIN = OTWAY
- PERMIT = PEP118
- TYPE = WELL
- SUBTYPE = NUM\_LOG
- DESCRIPTION = CPI Complex Lithology Results, 7 of 13,  
Mocamboro-11
- REMARKS =
- DATE\_CREATED = 31/07/1991
- DATE\_RECEIVED =
- W\_NO = W1032A
- WELL\_NAME = MOCAMBORO-11
- CONTRACTOR = GAS AND FUEL EXPLORATION NL
- CLIENT\_OP\_CO = GSV

(Inserted by DNRE - Vic Govt Mines Dept)

PE906599

This is an enclosure indicator page.  
The enclosure PE906599 is enclosed within the  
container PE906590 at this location in this  
document.

The enclosure PE906599 has the following characteristics:

- ITEM\_BARCODE = PE906599
- CONTAINER\_BARCODE = PE906590
  - NAME = CPI Complex Lithology Results, 8 of 13
  - BASIN = OTWAY
  - PERMIT = PEP118
  - TYPE = WELL
  - SUBTYPE = NUM\_LOG
- DESCRIPTION = CPI Complex Lithology Results, 8 of 13,  
Mocamboro-11
- REMARKS =
- DATE\_CREATED = 31/07/1991
- DATE\_RECEIVED =
  - W\_NO = W1032A
  - WELL\_NAME = MOCAMBORO-11
- CONTRACTOR = GAS AND FUEL EXPLORATION NL
- CLIENT\_OP\_CO = GSV

(Inserted by DNRE - Vic Govt Mines Dept)

PE906600

This is an enclosure indicator page.  
The enclosure PE906600 is enclosed within the  
container PE906590 at this location in this  
document.

The enclosure PE906600 has the following characteristics:

- ITEM\_BARCODE = PE906600
- CONTAINER\_BARCODE = PE906590
  - NAME = CPI Complex Lithology Results, 9 of 13
  - BASIN = OTWAY
  - PERMIT = PEP118
  - TYPE = WELL
  - SUBTYPE = NUM\_LOG
- DESCRIPTION = CPI Complex Lithology Results, 9 of 13,  
Mocamboro-11
- REMARKS =
- DATE\_CREATED = 31/07/1991
- DATE\_RECEIVED =
  - W\_NO = W1032A
  - WELL\_NAME = MOCAMBORO-11
- CONTRACTOR = GAS AND FUEL EXPLORATION NL
- CLIENT\_OP\_CO = GSV

(Inserted by DNRE - Vic Govt Mines Dept)

PE906601

This is an enclosure indicator page.  
The enclosure PE906601 is enclosed within the  
container PE906590 at this location in this  
document.

The enclosure PE906601 has the following characteristics:

- ITEM\_BARCODE = PE906601
- CONTAINER\_BARCODE = PE906590
  - NAME = CPI Complex Lithology Results,10 of 13
  - BASIN = OTWAY
  - PERMIT = PEP118
  - TYPE = WELL
  - SUBTYPE = NUM\_LOG
- DESCRIPTION = CPI Complex Lithology Results, 10 of  
13, Mocamboro-11
- REMARKS =
- DATE\_CREATED = 31/07/1991
- DATE\_RECEIVED =
- W\_NO = W1032A
- WELL\_NAME = MOCAMBORO-11
- CONTRACTOR = GAS AND FUEL EXPLORATION NL
- CLIENT\_OP\_CO = GSV

(Inserted by DNRE - Vic Govt Mines Dept)

PE906602

This is an enclosure indicator page.  
The enclosure PE906602 is enclosed within the  
container PE906590 at this location in this  
document.

The enclosure PE906602 has the following characteristics:

- ITEM\_BARCODE = PE906602
- CONTAINER\_BARCODE = PE906590
  - NAME = CPI Complex Lithology Results, 11 of 13
  - BASIN = OTWAY
  - PERMIT = PEP118
  - TYPE = WELL
  - SUBTYPE = NUM\_LOG
- DESCRIPTION = CPI Complex Lithology Results, 11 of  
13, Mocamboro-11
- REMARKS =
- DATE\_CREATED = 31/07/1991
- DATE\_RECEIVED =
  - W\_NO = W1032A
  - WELL\_NAME = MOCAMBORO-11
  - CONTRACTOR = GAS AND FUEL EXPLORATION NL
  - CLIENT\_OP\_CO = GSV

(Inserted by DNRE - Vic Govt Mines Dept)

PE906603

This is an enclosure indicator page.  
The enclosure PE906603 is enclosed within the  
container PE906590 at this location in this  
document.

The enclosure PE906603 has the following characteristics:

- ITEM\_BARCODE = PE906603
- CONTAINER\_BARCODE = PE906590
- NAME = CPI Complex Lithology Results, 12 of 13
- BASIN = OTWAY
- PERMIT = PEP118
- TYPE = WELL
- SUBTYPE = NUM\_LOG
- DESCRIPTION = CPI Complex Lithology Results, 12 of  
13, Mocamboro-11
- REMARKS =
- DATE\_CREATED = 31/07/1991
- DATE\_RECEIVED =
- W\_NO = W1032A
- WELL\_NAME = MOCAMBORO-11
- CONTRACTOR = GAS AND FUEL EXPLORATION NL
- CLIENT\_OP\_CO = GSV

(Inserted by DNRE - Vic Govt Mines Dept)



PE906604

This is an enclosure indicator page.  
The enclosure PE906604 is enclosed within the  
container PE906590 at this location in this  
document.

The enclosure PE906604 has the following characteristics:

- ITEM\_BARCODE = PE906604
- CONTAINER\_BARCODE = PE906590
  - NAME = CPI Complex Lithology Results, 13 of 13
  - BASIN = OTWAY
  - PERMIT = PEP118
  - TYPE = WELL
  - SUBTYPE = NUM\_LOG
- DESCRIPTION = CPI Complex Lithology Results, 13 of  
13, Mocamboro-11
- REMARKS =
- DATE\_CREATED = 31/07/1991
- DATE\_RECEIVED =
  - W\_NO = W1032A
  - WELL\_NAME = MOCAMBORO-11
  - CONTRACTOR = GAS AND FUEL EXPLORATION NL
  - CLIENT\_OP\_CO = GSV

(Inserted by DNRE - Vic Govt Mines Dept)