



STATE	Victoria	COMPANY	GFE Resources Ltd.
FIELD	Iona #2	WELL	Iona #2
LOCATION	Iona #2	FIELD	Iona
WELL	Iona #2	STATE	Victoria
COMPANY	GFE Resources Ltd.	RIG	Century Rig-11
LOG MEASURED FROM	KB	ELEV.	0.0 M
DRILLING MEASURED FROM	KB	ELEV.	134.3 M
DATE	26-FEB-94	PERMANENT DATUM	MSL
RUN NO.	One	LOG MEASURED FROM	KB
DEPTH DRILLER	1650.0 M	DRILLING MEASURED FROM	KB
DEPTH LOGGER (SEN.)	1650.0 M	ELEV.	0.0 M
BURN LOG INTERVAL	1599.0 M	ELEV.	134.3 M
TOP LOG INTERVAL	1034.5 M	DF	134.0 M
CASHING-DRILLER	9 5/8" @ 637.0 M	GL	130.0 M
CASHING-LOGGER	636.0 M	Other Services:	
BIT SIZE	12 1/4" @ 640.0 M	DLL-MSFL-GR	
TYPE FLUID IN HOLE	3% KCl/Gel/Polymer	AS-GR	
DENS.	930 LB/G	LD-CML-GR	
PH	8.7	WST(Checkshot)	
Source of Sample	FLOWLINE	HRT-GR	
Rm @ Meas. Temp.	308 OHMM @ 21.0 DEGC	CST-GR	
Rm @ Meas. Temp.	286 OHMM @ 23.0 DEGC		
Rm @ Meas. Temp.	428 OHMM @ 21.0 DEGC		
Source: Rm @ Meas. Temp.	Press		
Rm @ BHT	-000 OHMM		
Log Correlation	06:30 26/Feb		
Max. Rec. Temp.	8386		
Equip. Location	CEA		
Recorded By	Alan Richmond/Mike Wilson		
Witnessed By	Val Akbari		

The well name, location and borehole reference data were furnished by the customer.

All interpretations are opinions based on inferences from electrical or other measurements and we cannot, and do not guarantee the accuracy or correctness of any interpretations, and we shall not, except in the case of gross or willful negligence on our part, be liable or responsible for any loss, costs, damages or expenses incurred or sustained by anyone resulting from any interpretations made by any of our officers, agents or employees. These interpretations are also subject to Clause 4 of our General Terms and Conditions as set out in our current Price Schedule.

Run No.	One
Service Order No.	
Drilling Fluid Level	
Sediment	
Rmf @ BHT	-000 OHMM
Rmc @ BHT	-001 OHMM
Logging Speed	1800.0 F/HR
EQUIPMENT DATA	
Tool Number 1	GFH-A 317
Tool Number 2	CST-C
Tool Number 3	SHM-AA 764
Tool Number 4	
Tool Number 5	
Tool Number 6	
Tool Number 7	
Tool Number 8	
Tool Number 9	
Tool Number 10	
Tool Number 11	
Tool Number 12	

REMARKS:
Log correlated to DLL-MSFL-GR, Run #1. (25-Feb-94)
29 cores recovered from 30 shots.
All bullets were recovered.

SHOT SUMMARY

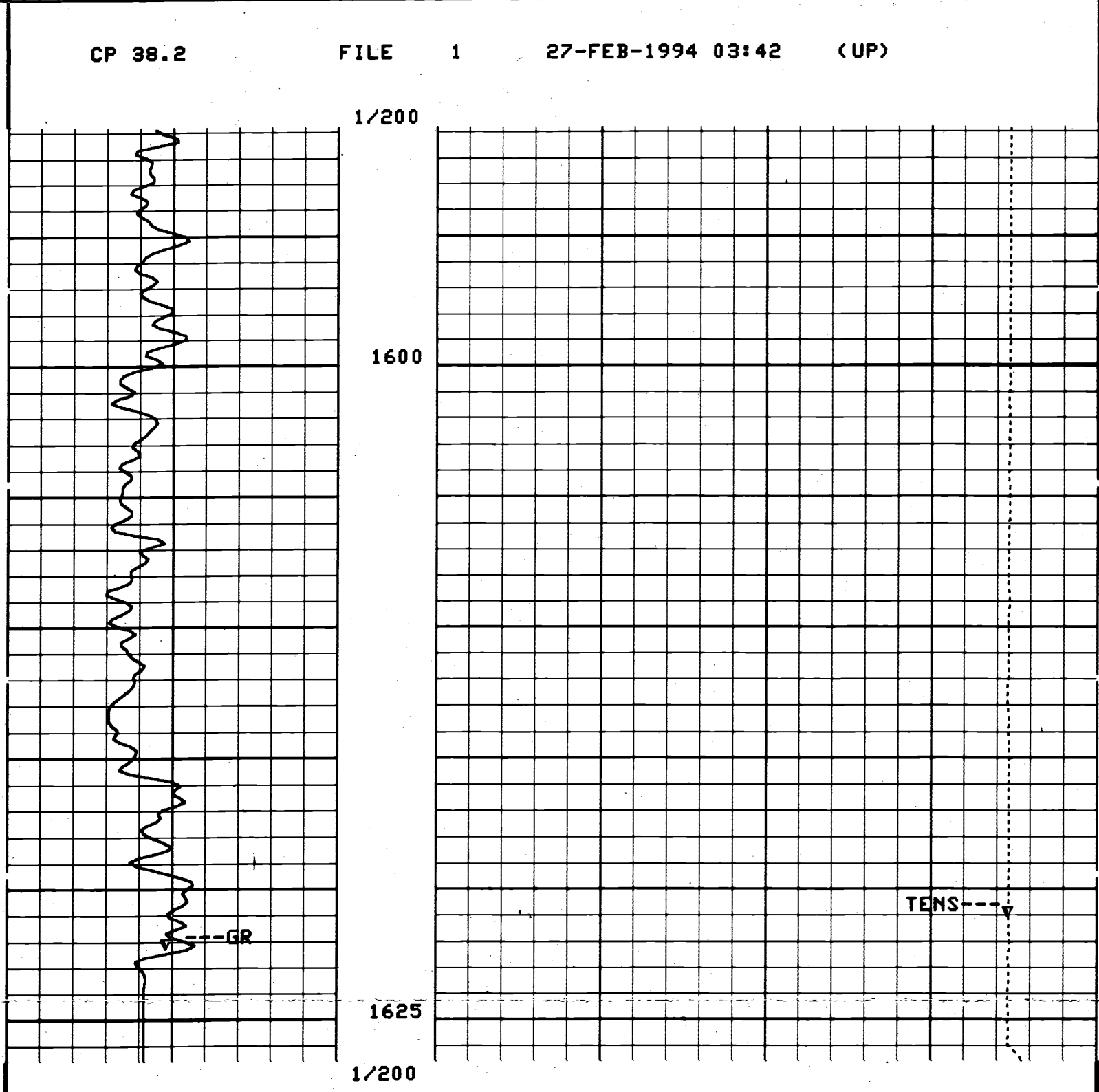
SHOT SUMMARY LISTING PERFORMED 27-FEB-1994 03:33

SHOT	STATUS	DEPTH	TENSION
1	FIRED	1599.0	214.1
2	FIRED	1590.0	81.31
3	FIRED	1550.5	895.0
4	EMPTY	1537.0	380.5
5	FIRED	1516.5	1446.
6	FIRED	1469.0	1189.
7	FIRED	1457.5	659.0
8	FIRED	1437.4	1480.
9	FIRED	1426.0	879.5
10	FIRED	1418.0	950.5
11	FIRED	1412.1	1035.
12	FIRED	1408.5	1253.
13	FIRED	1402.0	107.1
14	FIRED	1392.0	1033.
15	FIRED	1386.0	1211.
16	FIRED	1381.0	601.0
17	FIRED	1374.0	249.8
18	FIRED	1371.0	64.75
19	FIRED	1362.0	1120.
20	FIRED	1357.9	872.0
21	FIRED	1353.0	367.7
22	FIRED	1314.9	185.2
23	FIRED	1303.5	220.3
24	FIRED	1290.0	1100.
25	FIRED	1281.0	991.0
26	FIRED	1259.9	1090.
27	FIRED	1161.0	591.5
28	FIRED	1129.1	753.0
29	FIRED	1090.5	666.0
30	FIRED	1034.5	1173.

DEPTH UNITS : METE BIT SIZE : 8.500 IN
RING TYPE : SMALL BULLET TYPE :
POWDER LOAD :10.00 G POWDER TYPE :

GR Correlation

GR(GAPI)	80.000	TENS(LBF)	10000.	0.0
----------	--------	-----------	--------	-----



GR(GAPI)	80.000	TENS(LBF)	10000.	0.0
----------	--------	-----------	--------	-----

SENSOR MEASURE POINT TO TOOL ZERO
TENS 0.0 METER GR 3.02 METER

PARAMETERS					
NAME	VALUE	UNIT	NAME	VALUE	UNIT
SDC	0.0	F	NCJT	GSRV	
BS	8.50000	IN	BHS	OPEN	

COMPANY	GFE Resources Ltd.	SCHL. FR	1599.0 M
WELL	Iona #2	SCHL. TD	1650.0 M
FIELD	Iona	DRLR. TD	1650.0 M
STATE	Victoria	Elev.	KB 134.3 M
		DF	134.0 M
		GL	130.0 M

