

umberger

CST HENKE # 1 SUITE 1

CSU Field Log

DEPT. NAT. RES & ENV  
PE601071

COMPANY: BEACH PETROLEUM N.L.  
WELL: HENKE # 1  
FIELD: WILDCAT  
RIG: O.D.E. # 19  
STATE: VICTORIA  
NATION: AUSTRALIA  
LOCATION: OTHWAY BASIN  
  
LATITUDE: 28° 0' 20.3549"  
LONGITUDE: 141° 11' 25.81"  
  
PERMANENT DATUM: MSL  
ELEVATIONS-  
ELEV. OF PERM. DATUM: KB: 38.6 M  
LOG MEASURED FROM: KB DF: 38.3 M  
38.6 M ABOVE PERM. DATUM GL: 34.1 M  
DRLG. MEASURED FROM: KB

OTHER SERVICES-  
DLL-MSFL-GR  
LDL-CNL-GR  
  
HST

PROGRAM  
TAPE NO:  
27.61F  
SERVICE  
ORDER NO:

DATE: 7 JUL 87  
RUN NO: 1

DEPTH-DRILLER: 1435.0 M  
DEPTH-LOGGER: 1433.0 M  
BTM. LOG INTERVAL:  
TOP LOG INTERVAL:  
  
CASING-DRILLER: 16.5 M 297.5 M  
CASING-LOGGER: 297.0 M  
CASING: 16 9 5/8  
WEIGHT: 55.0000 LB/F 36.0000 LB/F  
BIT SIZE: 17 1/2 12 1/4 8 1/2  
DEPTH: 16.5 M 301.0 M 1435.0 M

TYPE FLUID IN HOLE: FRESH WATER GEL / CMC  
DENSITY: 9.20 LB/G  
VISCOSITY: 39.0 S  
PH: 9.5  
FLUID LOSS: 7.5 C3  
SOURCE OF SAMPLE: FLOWLINE  
RM: 2.080 OHMM AT 61.7 DEGF  
RMF: 1.430 OHMM AT 55.4 DEGF  
RMC: 2.100 OHMM AT 55.4 DEGF  
SOURCE RMF/RMC: PRESS /PRESS  
RM AT BHT: .910 OHMM AT 150. DEGF  
RMF AT BHT: .568 OHMM AT 150. DEGF  
RMC AT BHT: .834 OHMM AT 150. DEGF  
  
TIME CIRC. STOPPED: 16:00 (06)  
TIME LOGGER ON BTM.:  
  
MAX. REC. TEMP: 150.0 DEGF  
  
LOGGING UNIT NO: 022  
LOGGING UNIT LOC: YEA  
RECORDED BY: J. PATEL  
WITNESSED BY: B. RAYNER

REMARKS:  
22 CORES ATTEMPTED , 21 RECOVERED.

EQUIPMENT NUMBERS-  
CSTC GPC A 494 GPD A 519 GFK A 418  
SHM AA 1778

ALL INTERPRETATIONS ARE OPINIONS BASED ON INFERENCES FROM ELECTRICAL OR OTHER MEASUREMENTS AND WE CANNOT, AND DO NOT GUARANTEE THE ACCURACY OR CORRECTNESS OF ANY INTERPRETATIONS, AND WE SHALL NOT, EXCEPT IN THE CASE OF GROSS OR WILLFUL NEGLIGENCE ON OUR PART, BE LIABLE OR RESPONSIBLE FOR ANY LOSS, COSTS, DAMAGES OR EXPENSES INCURRED OR SUSTAINED BY ANYONE RESULTING FROM ANY INTERPRETATION MADE BY ANY OF OUR OFFICERS, AGENTS OR EMPLOYEES. THESE INTERPRETATIONS ARE ALSO SUBJECT TO OUR GENERAL TERMS AND CONDITIONS AS SET OUT IN OUR CURRENT PRICE SCHEDULE.

CP 27.61F FILE 0 07-JUL-87 17:54  
DATA ACQUIRED NA

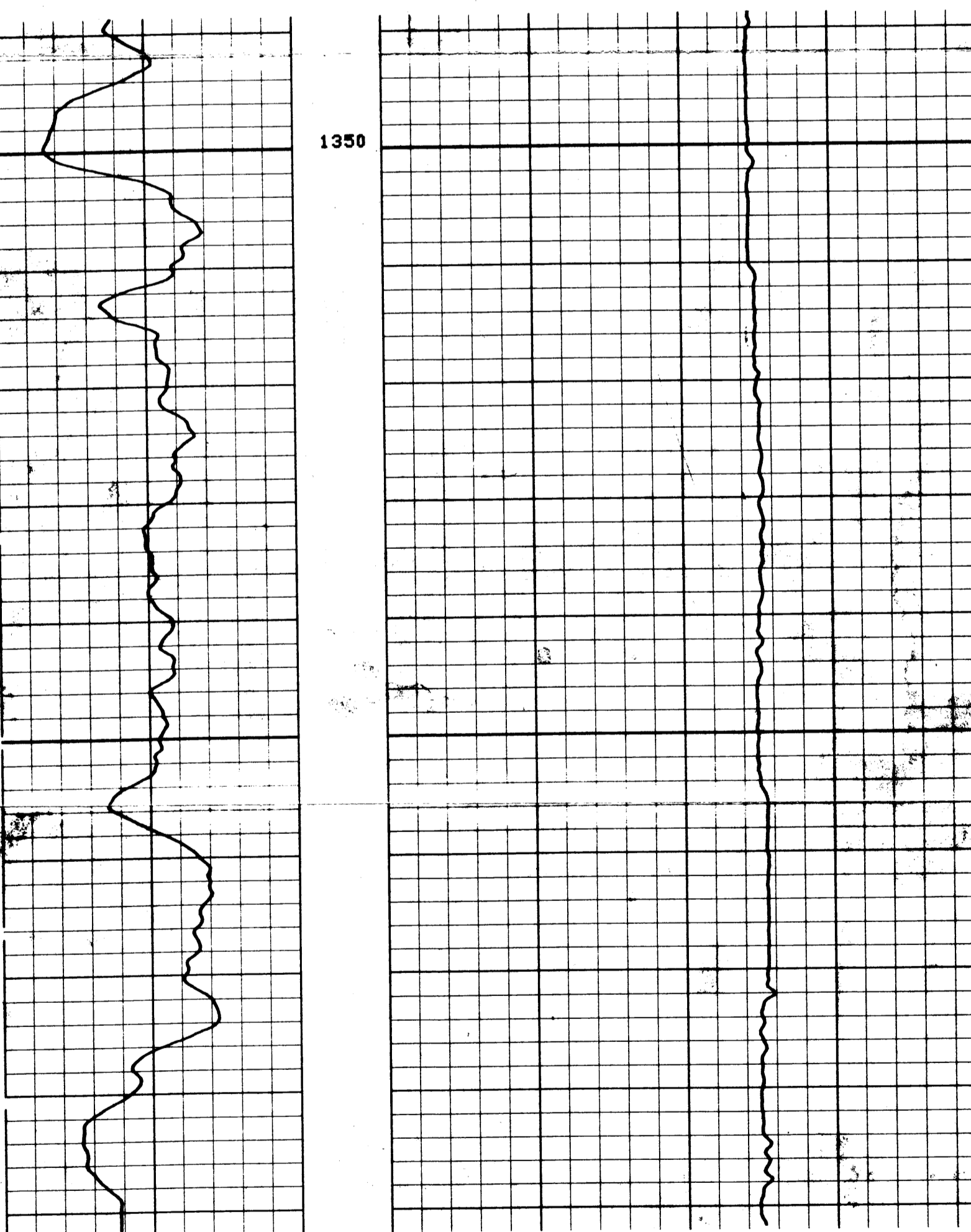
SHOT SUMM :

SHOT	STAT	TOOL	MPOI	WIRE	DEPT	TENS	INTE	NUMP	PUNI	TUNI
30	UNUS	CSTC	78	W3+	0.0	0.0	0	1	M	M
29	UNUS	CSTC	75	W2+	0.0	0.0	0	1	M	M
28	UNUS	CSTC	73	W1+	0.0	0.0	0	1	M	M
27	UNUS	CSTC	70	W3+	0.0	0.0	0	1	M	M
26	UNUS	CSTC	68	W2+	0.0	0.0	0	1	M	M
25	UNUS	CSTC	65	W1+	0.0	0.0	0	1	M	M
24	UNUS	CSTC	63	W3+	0.0	0.0	0	1	M	M
23	UNUS	CSTC	60	W2+	0.0	0.0	0	1	M	M
22	FIRE	CSTC	58	W1+	1008.07	310.7	0	1	M	M
21	FIRE	CSTC	55	W3+	1009.06	135.3	0	1	M	M
20	FIRE	CSTC	53	W2+	1045.00	518.5	0	1	M	M
19	FIRE	CSTC	50	W1+	1116.98	533.0	0	1	M	M
18	FIRE	CSTC	48	W3+	1249.98	1030.	0	1	M	M
17	FIRE	CSTC	45	W2+	1262.95	816.5	0	1	M	M
16	FIRE	CSTC	43	W1+	1268.49	1082.	0	1	M	M
15	FIRE	CSTC	40	W3+	1284.93	1510.	0	1	M	M
14	FIRE	CSTC	38	W2+	1310.04	1439.	0	1	M	M
13	FIRE	CSTC	35	W1+	1318.01	1006.	0	1	M	M
12	EMPT	CSTC	33	W3+	1318.94	1415.	0	1	M	M
11	FIRE	CSTC	30	W2+	1321.52	1087.	0	1	M	M
10	FIRE	CSTC	28	W1+	1327.44	1265.	0	1	M	M
9	FIRE	CSTC	25	W3+	1329.97	89.68	0	1	M	M
8	FIRE	CSTC	23	W2+	1344.01	121.6	0	1	M	M
7	FIRE	CSTC	20	W1+	1351.98	141.0	0	1	M	M
6	FIRE	CSTC	18	W3+	1358.03	207.5	0	1	M	M
5	FIRE	CSTC	15	W2+	1365.03	199.0	0	1	M	M
4	FIRE	CSTC	13	W1+	1381.96	124.5	0	1	M	M
3	FIRE	CSTC	10	W3+	1391.95	1115.	0	1	M	M
2	FIRE	CSTC	8	W2+	1429.40	335.7	0	1	M	M
1	FIRE	CSTC	5	W1+	1429.96	292.2	0	1	M	M

CP 27.61F FILE 0 07-JUL-87 18:05  
DATA ACQUIRED 07-JUL-87 17:11

GR (GAPI) TENS(LB) 0.0 150.00 0.0 3000.0

CP 27.61F FILE 2 07-JUL-87 18:03  
DATA ACQUIRED 07-JUL-87 17:11



CP 27.61F FILE 2 07-JUL-87 18:02  
DATA ACQUIRED 07-JUL-87 17:04

GR (GAPI) TENS(LB) 0.0 150.00 0.0 3000.0

SENSOR MEASURE POINT TO TOOL ZERO  
TENS 1.50 METER GR 3.02 METER

PARAMETERS

NAME	VALUE	UNIT	NAME	VALUE	UNIT
BS	8.50000	IN	BHS	OPEN	
PP	NORM		DO	0.0	M

TAPE NOT MADE

umberger

CST HENKE # 1 SUITE 1

CSU Field Log