

Digby #1

Spore/Pollen Distribution Chart (Diversity)

Total Flora

Plant "Division" Morphological Groups

DEPT. NAT. RES & ENV

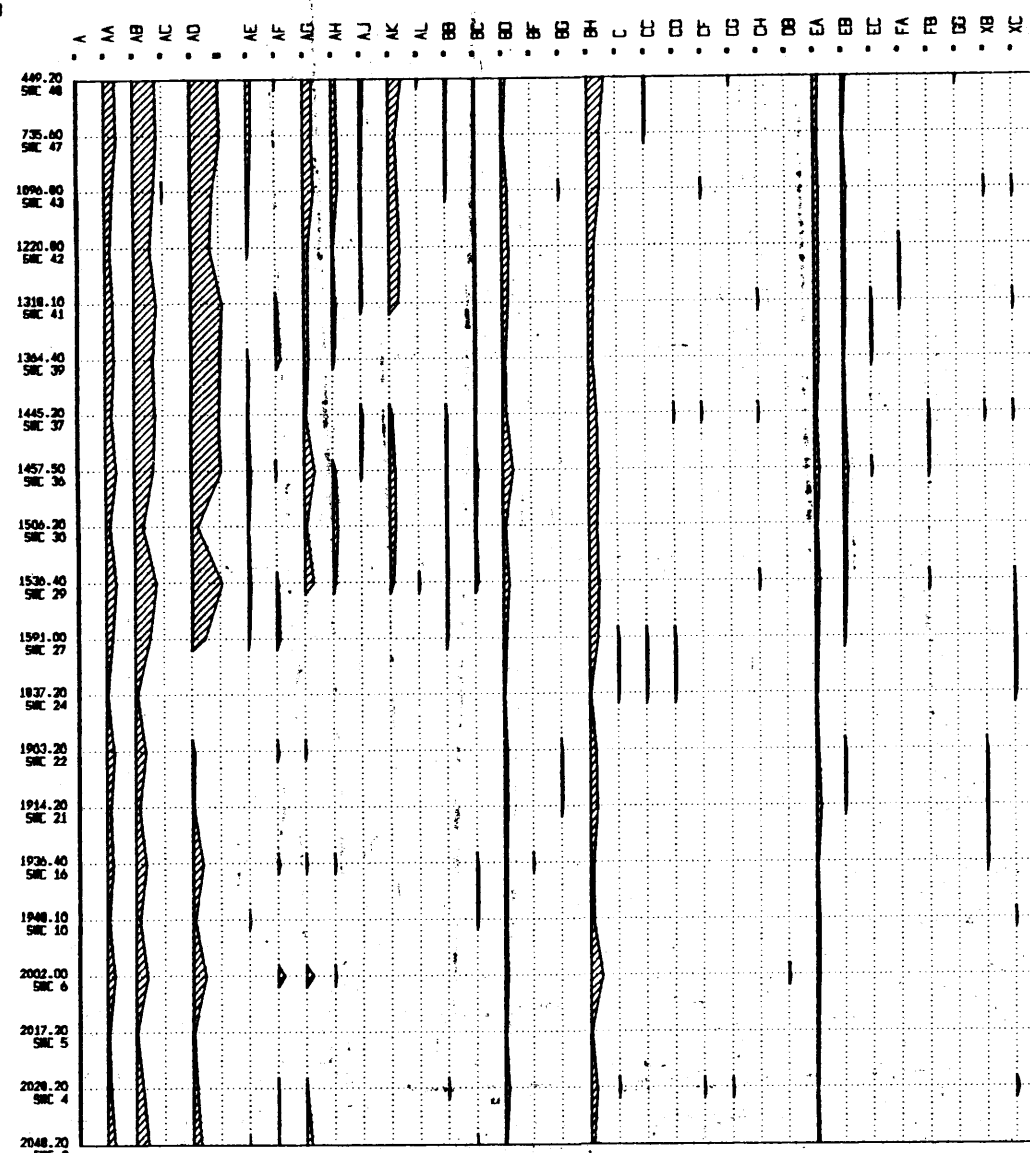


PE900736

- Land Plant Spores
- LAEVIDIATI
- APTOLLATI
- CHEILOCARPOIDI
- MURORATI
- AURICULATI
- TRIDASSATI
- CONGLATI
- CAVATI
- GLIATI
- ALETTI
- MONOLETTI
- SULCATE/PILICATE
- SPHERO-SULCOPORATE
- Inoperantulus Pollen
- MONOSACCATE
- STRIPATE
- BI-POLY SACCATE
- Angiospermous Pollen
- MONOPERFORATE
- SYNCLIPATE
- TRICOLPATE (OR 3 PAIRS)
- TRICOLPATE (INCL SOME TRICOLPORATE)
- TRICOLPORATE
- HYPNIDIA
- PRASINOPHYTA
- CHLOROPHYTA
- AFFINITY UNKNOWN
- VERVAUCHIUM
- HYDRYSTRIDIUM
- CONYALICOID CYSTS
- REWORKED FORMS
- CONTAMINATES

Depth (Metres)

(Sample)



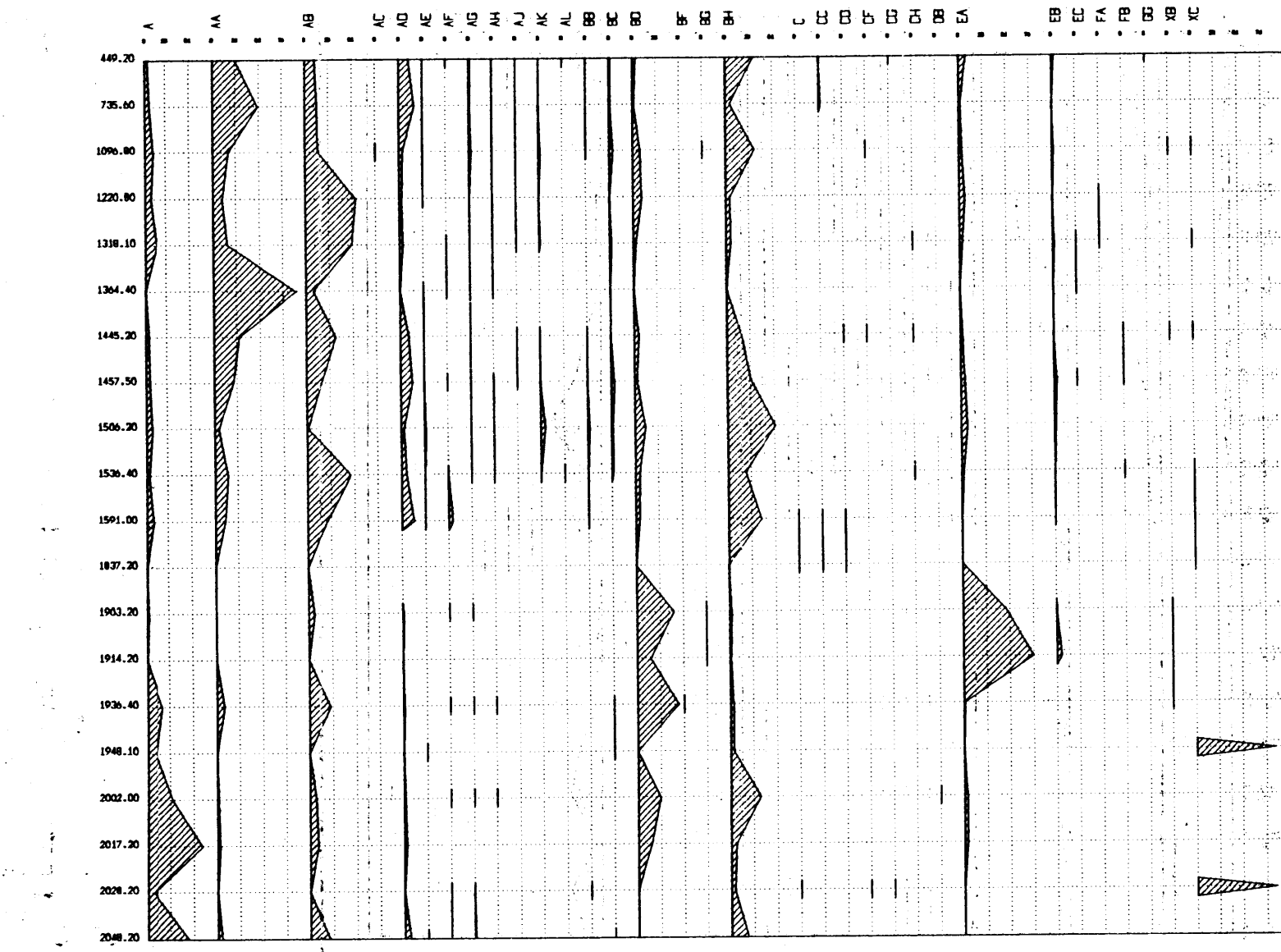
Digby #1

Spore/Pollen Distribution Chart (Counts)

Total Flora

- Land Plant Spores
- LAEVIDIATI
- APTOLLATI
- CHEILOCARPOIDI
- MURORATI
- AURICULATI
- TRIDASSATI
- CONGLATI
- CAVATI
- GLIATI
- ALETTI
- MONOLETTI
- SULCATE/PILICATE
- SPHERO-SULCOPORATE
- Inoperantulus Pollen
- MONOSACCATE
- STRIPATE
- BI-POLY SACCATE
- Angiospermous Pollen
- MONOPERFORATE
- SYNCLIPATE
- TRICOLPATE (OR 3 PAIRS)
- TRICOLPATE (INCL SOME TRICOLPORATE)
- TRICOLPORATE
- HYPNIDIA
- PRASINOPHYTA
- CHLOROPHYTA
- AFFINITY UNKNOWN
- VERVAUCHIUM
- HYDRYSTRIDIUM
- CONYALICOID CYSTS
- REWORKED FORMS
- CONTAMINATES

Depth (Metres)



Digby #1

Spore/Pollen Distribution Chart (Counts)

Land Plant Flora

- Land Plant Spores
- LAEVIDIATI
- APTOLLATI
- CHEILOCARPOIDI
- MURORATI
- AURICULATI
- TRIDASSATI
- CONGLATI
- CAVATI
- GLIATI
- ALETTI
- MONOLETTI
- SULCATE/PILICATE
- SPHERO-SULCOPORATE
- Inoperantulus Pollen
- MONOSACCATE
- STRIPATE
- BI-POLY SACCATE
- Angiospermous Pollen
- MONOPERFORATE
- SYNCLIPATE
- TRICOLPATE (OR 3 PAIRS)
- TRICOLPATE (INCL SOME TRICOLPORATE)
- TRICOLPORATE
- HYPNIDIA

Depth (Metres)

(Sample)

