

# OIL DRILLING & EXPLORATION LTD.

## Electric Well Log

DEPT. NAT. RES & ENV  
PE603623



TEMPERATURE AND CALIPER LOGS ENCLOSURE 4(b) and (c)

CUSTOMER A.P.M. DEVELOPMENT PTY. LTD. WELL NO. ROSEDALE NG. 1

LOCATION ROSEDALE STATE VICTORIA COUNTRY AUSTRALIA

ELEVATIONS Ground Level: \_\_\_\_\_ Derrick Floor: \_\_\_\_\_ Kelly Bush: \_\_\_\_\_

HOLE DEPTH Drillers Temp: 2433' Caliper: 7.433' Electric Log: \_\_\_\_\_ Depth Datum: Table

LOG SIZE 12 1/4" CASING Size: 13 3/8" Depth: 310'

TYPE OF MUD BENTONITE

Viscosity: \_\_\_\_\_ Resistivity: \_\_\_\_\_

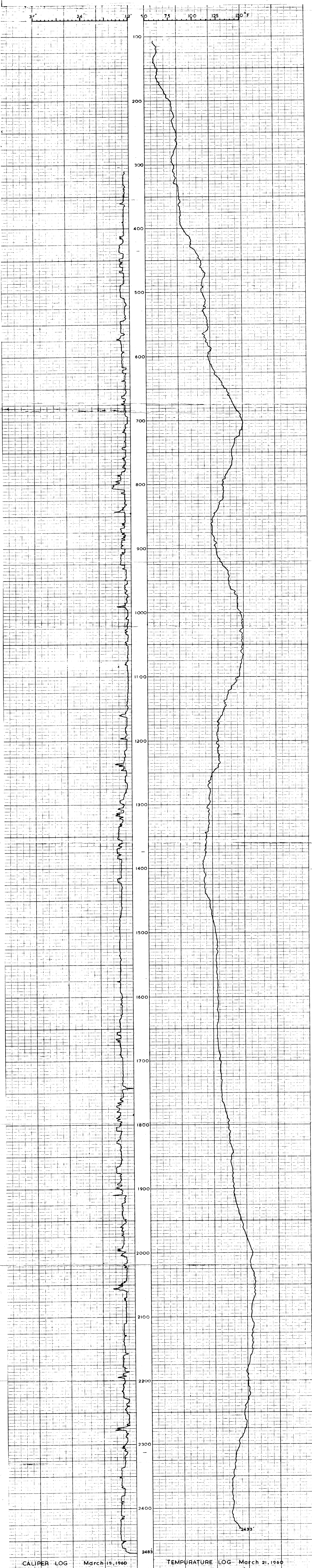
Density: \_\_\_\_\_ Water Loss: \_\_\_\_\_

ph \_\_\_\_\_ Comments: \_\_\_\_\_

LOGGED BY J.G. ANTLIFF WITNESSED BY J. SMITH

C.D.F. NO. 11 DATE March 19, 1960 Caliper : March 19, 1960

92 Temp. : March 21, 1960



CALIPER LOG March 19, 1960 TEMPERATURE LOG March 21, 1960  
 A.P.M. DEVELOPMENT PTY. LTD. Rosedale I.